

# INTRUST Bank Arena

**Mission:** *The INTRUST Bank Arena is a modern, first-class sports and entertainment venue owned by Sedgwick County and operated by SMG, providing 15,000 seats for basketball games. The INTRUST Bank Arena is home to indoor sporting events, concerts, family shows and other entertainment.*

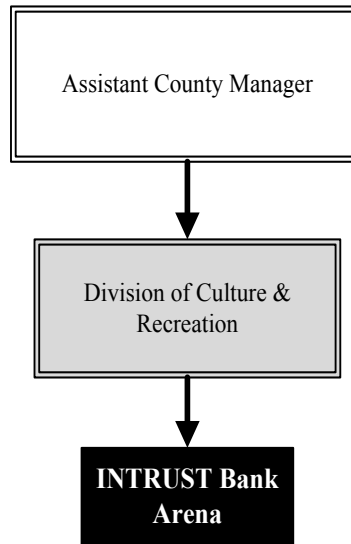
**Ron Holt**  
**Assistant County Manager**

525 No. Main, Suite 343  
 Wichita, KS 67203  
 316-660-9393  
[ronald.holt@sedgwick.gov](mailto:ronald.holt@sedgwick.gov)

## Overview

The INTRUST Bank Arena is a modern, state-of-the-art sports and entertainment venue, perfect for concerts and conventions alike. Located in the heart of downtown Wichita with restaurants, shops and eclectic entertainment options nearby, the INTRUST Bank Arena is the premier arena in the Midwest.

Construction costs were funded without debt from the proceeds of a special one-percent County sales tax, which was approved by voters in November 2004. This method allowed for the Arena to be constructed while the revenue was collected, eliminating the need for securing bonds to finance the project, saving approximately \$112 million in interest. The arena sales tax revenues exceeded projections and totaled \$206.5 million. Resulting in \$15.9 million for an operations and maintenance reserve fund to be used for major repairs and capital equipment purchases.



## Strategic Goals:

- *Continue to provide quality entertainment for the citizens of Sedgwick County*

## Highlights

- INTRUST Bank Arena held 61 ticketed events and 77 performances in 2014 with 298,825 in attendance
- 276,737 tickets were sold in 2014, with an average attendance per performance of 2,576
- Net income in 2014 was \$122,853



# Accomplishments and Priorities

## Accomplishments

SMG pursues every act that is planning to tour arenas and continues work to secure a diverse group of acts at INTRUST Bank Arena. Events for 2015 include:

- Power House Jam feat. Lil' Wayne
- Lady Antebellum
- Boston
- Wingapalooza 2015
- Living Proof Live
- Ringling Bros. and Barnum & Bailey Circus
- Foo Fighters
- Ariana Grande
- Def Leppard
- Monster Jam
- Jason Aldean
- Professional Bull Riders Velocity Tour
- Miranda Lambert & Justin Moore
- Disney on Ice Princesses & Heros
- Fleetwood Mac
- Wichita Wildcat Classic: Kansas State v. Colorado State
- Wichita Thunder regular season games
- Wichita Force Indoor Football

## Priorities

The INTRUST Bank Arena contributes toward promoting, supporting and facilitating the creation of wealth and employment opportunities in downtown Wichita. The Metropolitan Area Planning Department (MAPD), which is jointly funded by Sedgwick County and the City of Wichita, is tasked with producing the neighborhood redevelopment plan for the area surrounding the INTRUST Bank Arena.

One of the unique aspects of the Arena project was continuous involvement by citizens. Commissioners encouraged citizen engagement as a means of soliciting ideas, concerns and views throughout the planning, design and construction processes. Two citizen-based committees, the Citizen Arena Sales Tax Oversight Committee and the Citizen Design Review Committee, were created to ensure public participation, as well as facilitating numerous public meetings. In addition, the Sedgwick County website is utilized in an effort to continue to keep the operation of the Arena transparent.

While Sedgwick County owns the building, SMG was hired in 2007 as the building operator to oversee the business, management and contract administration aspects of the Arena. SMG is responsible for ensuring high-quality services and will incur any operating losses during any fiscal year of the contract period.

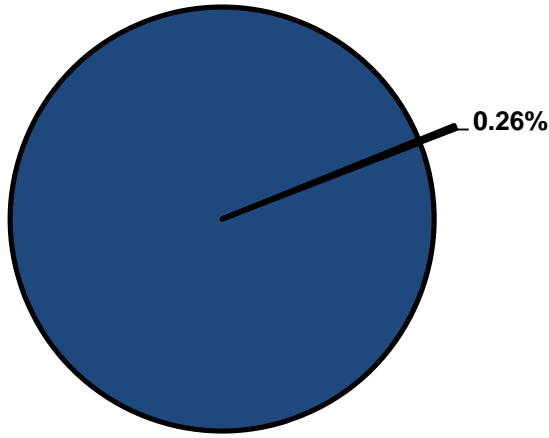


## Significant Budget Adjustments

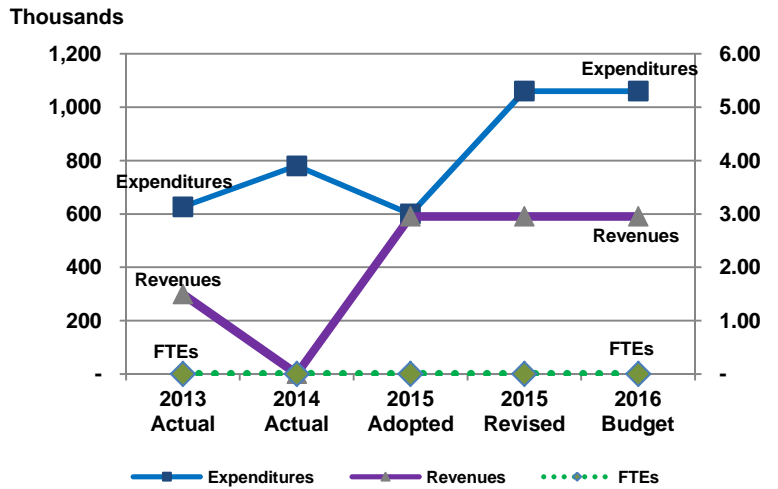
There are no significant adjustments to the INTRUST Bank Arena 2016 budget.

**Departmental Graphical Summary**

**INTRUST Bank Arena**  
Percent of Total County Operating Budget



**Expenditures, Program Revenue & FTEs**  
All Operating Funds



**Budget Summary by Category**

	2013 Actual	2014 Actual	2015 Adopted	2015 Revised	2016 Budget	Amount Chg '15 Rev.-'16	% Chg '15 Rev.-'16
<b>Expenditures</b>							
Personnel	-	-	-	-	-	-	-
Contractual Services	376,324	416,470	350,000	350,000	350,000	-	0.00%
Debt Service	-	-	-	-	-	-	-
Commodities	288	-	-	-	-	-	-
Capital Improvements	250,000	363,903	250,000	710,000	710,000	-	0.00%
Capital Equipment	-	-	-	-	-	-	-
Interfund Transfers	-	-	-	-	-	-	-
<b>Total Expenditures</b>	<b>626,612</b>	<b>780,373</b>	<b>600,000</b>	<b>1,060,000</b>	<b>1,060,000</b>	<b>-</b>	<b>0.00%</b>
<b>Revenues</b>							
Tax Revenues	-	-	-	-	-	-	-
Licenses and Permits	-	-	-	-	-	-	-
Intergovernmental	-	-	-	-	-	-	-
Charges for Services	-	-	590,000	590,000	590,000	-	0.00%
All Other Revenue	299,433	152	-	-	-	-	-
<b>Total Revenues</b>	<b>299,433</b>	<b>152</b>	<b>590,000</b>	<b>590,000</b>	<b>590,000</b>	<b>-</b>	<b>0.00%</b>
<b>Full-Time Equivalents (FTEs)</b>							
Property Tax Funded	-	-	-	-	-	-	-
Non-Property Tax Funded	-	-	-	-	-	-	-
<b>Total FTEs</b>	<b>-</b>	<b>-</b>	<b>-</b>	<b>-</b>	<b>-</b>	<b>-</b>	<b>-</b>

**Budget Summary by Fund**

Fund	2013 Actual	2014 Actual	2015 Adopted	2015 Revised	2016 Budget	Amount Chg '15 Rev.-'16	% Chg '15 Rev.-'16
INTRUST Bank Arena	626,612	780,373	600,000	1,060,000	1,060,000	-	0.00%
<b>Total Expenditures</b>	<b>626,612</b>	<b>780,373</b>	<b>600,000</b>	<b>1,060,000</b>	<b>1,060,000</b>	<b>-</b>	<b>0.00%</b>

**Significant Budget Adjustments from Prior Year Revised Budget**

Expenditures    Revenues    FTEs

**Total**    \_\_\_\_\_    \_\_\_\_\_    \_\_\_\_\_

**Budget Summary by Program**

Program	Fund	2013 Actual	2014 Actual	2015 Adopted	2015 Revised	2016 Budget	% Chg '15 Rev.-'16	2016 FTEs
Arena Operations	550	376,612	381,987	350,000	350,000	350,000	0.00%	-
Arena Capital Improvem.	550	250,000	398,386	250,000	710,000	710,000	-	-
<b>Total</b>		<b>626,612</b>	<b>780,373</b>	<b>600,000</b>	<b>1,060,000</b>	<b>1,060,000</b>	<b>0.00%</b>	<b>-</b>

**• Arena Operations**

Senate Bill 58, signed on April 4, 2005 by Governor Kathleen Sebelius, authorized Sedgwick County to collect a one percent sales tax for a period of 30 months beginning July 1, 2005. The proceeds for this tax were specifically designated for the construction of an Arena in the downtown area of Wichita, renovations to the Kansas Pavilions, and an operating/maintenance reserve for the INTRUST Bank Arena and the Kansas Pavilions. The Arena Operations fund center is budgeted for operation and maintenance expenditures for the INTRUST Bank Arena.

**Fund(s): Arena Tax Fund 550**

Expenditures	2013 Actual	2014 Actual	2015 Adopted	2015 Revised	2016 Budget	Amnt. Chg. '15 - '16	% Chg. '15 - '16
Personnel	-	-	-	-	-	-	0.0%
Contractual Services	376,324	381,987	350,000	350,000	350,000	-	0.0%
Debt Service	-	-	-	-	-	-	0.0%
Commodities	288	-	-	-	-	-	0.0%
Capital Improvements	-	-	-	-	-	-	0.0%
Capital Equipment	-	-	-	-	-	-	0.0%
Interfund Transfers	-	-	-	-	-	-	0.0%
<b>Total Expenditures</b>	<b>376,612</b>	<b>381,987</b>	<b>350,000</b>	<b>350,000</b>	<b>350,000</b>	<b>-</b>	<b>0.0%</b>
<b>Revenues</b>							
Taxes	-	-	-	-	-	-	0.0%
Intergovernmental	-	-	-	-	-	-	0.0%
Charges For Service	-	-	590,000	590,000	590,000	-	0.0%
All Other Revenue	299,203	18	-	-	-	-	0.0%
<b>Total Revenues</b>	<b>299,203</b>	<b>18</b>	<b>590,000</b>	<b>590,000</b>	<b>590,000</b>	<b>-</b>	<b>0.0%</b>
<b>Full-Time Equivalents (FTEs)</b>	<b>-</b>	<b>-</b>	<b>-</b>	<b>-</b>	<b>-</b>	<b>-</b>	<b>0.0%</b>

**• Arena Capital Improvements**

Senate Bill 58, signed on April 4, 2005 by Governor Kathleen Sebelius, authorized Sedgwick County to collect a one-percent sales tax for a period of 30 months beginning July 1, 2005. The proceeds for this tax were specifically designated for the construction of an Arena in the downtown area of Wichita, renovations to the Coliseum Pavilions, and an operating/maintenance reserve for the INTRUST Bank Arena and the Kansas Pavilions. The Arena Capital Improvement fund center is budgeted for INTRUST Bank Arena capital projects.

**Fund(s): Arena Tax Fund 550**

Expenditures	2013 Actual	2014 Actual	2015 Adopted	2015 Revised	2016 Budget	Amnt. Chg. '15 - '16	% Chg. '15 - '16
Personnel	-	-	-	-	-	-	0.0%
Contractual Services	-	34,483	-	-	-	-	0.0%
Debt Service	-	-	-	-	-	-	0.0%
Commodities	-	-	-	-	-	-	0.0%
Capital Improvements	250,000	363,903	250,000	710,000	710,000	-	0.0%
Capital Equipment	-	-	-	-	-	-	0.0%
Interfund Transfers	-	-	-	-	-	-	0.0%
<b>Total Expenditures</b>	<b>250,000</b>	<b>398,386</b>	<b>250,000</b>	<b>710,000</b>	<b>710,000</b>	<b>-</b>	<b>0.0%</b>
<b>Revenues</b>							
Taxes	-	-	-	-	-	-	0.0%
Intergovernmental	-	-	-	-	-	-	0.0%
Charges For Service	-	-	-	-	-	-	0.0%
All Other Revenue	231	134	-	-	-	-	0.0%
<b>Total Revenues</b>	<b>231</b>	<b>134</b>	<b>-</b>	<b>-</b>	<b>-</b>	<b>-</b>	<b>0.0%</b>
<b>Full-Time Equivalents (FTEs)</b>	<b>-</b>	<b>-</b>	<b>-</b>	<b>-</b>	<b>-</b>	<b>-</b>	<b>0.0%</b>