

# Crime Prevention Fund

***Mission: To effectively and efficiently administer the Sedgwick County Community Crime Prevention Fund in a results driven manner; thereby aiding the community-wide goal of prioritizing prevention services, establishing effective early interventions and ultimately reducing the number of juvenile offenders.***

**Timothy V. Kaufman  
Human Services Director**

635 North Main  
Wichita, Kansas 67203  
316-660-7674

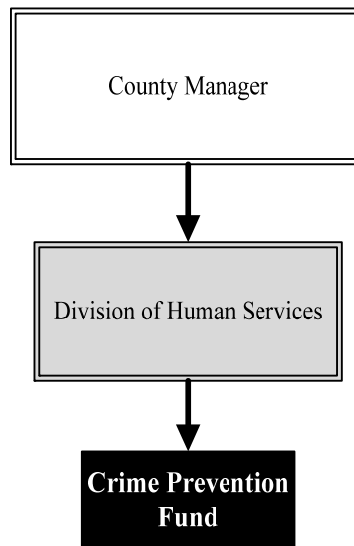
[tkaufman@sedgwick.gov](mailto:tkaufman@sedgwick.gov)

## Overview

The Sedgwick County Community Crime Prevention Fund utilizes current research to target grant dollars to programs demonstrating the greatest crime prevention impact. Programs serve youth assessed at moderate to high risk for offending and their families.

For 2013, nine programs received funding:

- Targeted Outreach Program—Boys and Girls Club
- Communities In Schools—two sites
- The Teen Intervention Program—Episcopal Social Services
- Aggression Replacement Training—Episcopal Social Services
- Learning the Ropes—Higher Ground
- KANSEL's GED Preparation— Training and Placement Program
- PATHS for Kids—Mental Health Association
- Functional Family Therapy provided— Family Consultation Services
- City Works—Youth for Christ



## Highlights

- During state fiscal year 2012, the JJA and Sedgwick County Crime Prevention programs served a total of 2,228 youth (partially unduplicated figure).
- During SFY 2012, the JJA and Sedgwick County Crime Prevention programs achieved a 68.8 percent successful completion rate.
- Juvenile filings in the 18th Judicial District decreased 5 percent between State Fiscal Year (SFY) 2012 and 2011.
- Sedgwick County hosted several trainings for crime prevention providers to improve evidence-based skills and outcomes focus.

## Strategic Goals:

- *Administer the Sedgwick County Community Crime Prevention fund utilizing current research to effectively target grant dollars to achieve the greatest impact*
- *Utilize a community-wide focus to develop a comprehensive continuum of crime prevention and early intervention programs to address areas of need.*
- *Positively impact juvenile offending and disproportionate juvenile minority law enforcement contact in Sedgwick County*



# Accomplishments and Priorities

## Accomplishments

During the last year, significant attention has been provided to supporting crime prevention contractors with technical assistance and training. Last fall, 42 individuals from a variety of local nonprofits attended training on Helping Youth Achieve Positive Change (HYAPC) conducted by Wichita State University and Sedgwick County. HYAPC focused on usage of reflective listening, implementing Positive Youth Justice strategies/techniques and maximizing assessment data to improve services.

The Department of Corrections hosted a training on the evidence-based practice of Motivational Interviewing which was attended by 23 participants. Additionally, through a cooperative effort between the Sedgwick County Crime Prevention Fund and the City of Wichita Special Liquor Tax Grant Fund, a workshop on Managing to Outcomes was provided for 69 individuals from area nonprofits.

## Priorities

Based on ongoing work with the professional evaluator, grant funds will continue to be directed to programming that achieves the greatest crime prevention impact. In the upcoming year, focus will be given to redefining outcome measures, improving family engagement and incorporating positive youth development techniques in programming.



## Significant Budget Adjustments

There are no significant adjustments to Crime Prevention Fund's 2014 budget.

**Significant Adjustments From Previous Budget Year**

Expenditures   Revenue   FTEs

**Total**                                                               

<b>Budget Summary by Category</b>						<b>Budget Summary by Fund</b>		
	2012 Actual	2013 Adopted	2013 Revised	2014 Budget	% Chg. '13-'14	Expenditures	2013 Revised	2014 Budget
<b>Expenditures</b>								
Personnel	-	-	-	-	-	General Fund-110	762,383	762,383
Contractual Services	811,622	762,383	762,383	762,383	0.0%			
Debt Service	-	-	-	-	-			
Commodities	117	-	-	-	-			
Capital Improvements	-	-	-	-	-			
Capital Equipment	-	-	-	-	-			
Interfund Transfers	-	-	-	-	-			
<b>Total Expenditures</b>	<b>811,739</b>	<b>762,383</b>	<b>762,383</b>	<b>762,383</b>	<b>0.0%</b>	<b>Total Expenditures</b>	<b>762,383</b>	<b>762,383</b>
<b>Revenue</b>								
Taxes	-	-	-	-	-			
Intergovernmental	-	-	-	-	-			
Charges For Service	-	-	-	-	-			
Other Revenue	3,459	-	-	-	-			
<b>Total Revenue</b>	<b>3,459</b>	<b>-</b>	<b>-</b>	<b>-</b>	<b>-</b>			
<b>Full-Time Equivalents (FTEs)</b>	<b>-</b>	<b>-</b>	<b>-</b>	<b>-</b>	<b>-</b>			

<b>Budget Summary by Program</b>							<b>Full-Time Equivalents (FTEs)</b>		
Program	Fund	Expenditures				% Chg. '13-'14	2013 Adopted	2013 Revised	2014 Budget
		2012 Actual	2013 Adopted	2013 Revised	2014 Budget				
Crime Prevention Fund	110	811,739	762,383	762,383	762,383	0.0%	-	-	-
<b>Total</b>		<b>811,739</b>	<b>762,383</b>	<b>762,383</b>	<b>762,383</b>	<b>0.0%</b>	<b>-</b>	<b>-</b>	<b>-</b>

