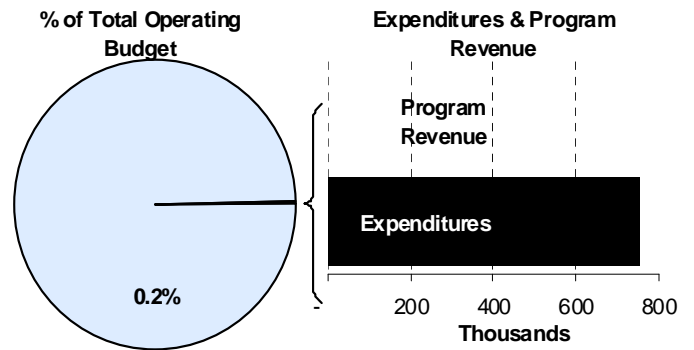
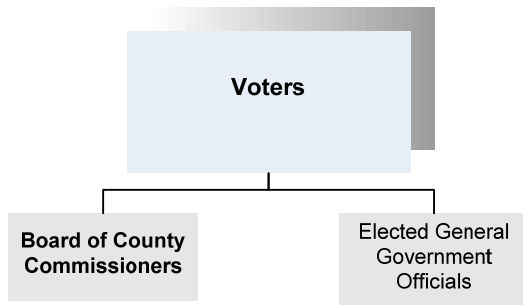


**Commissioners**  
 David Unruh 1<sup>st</sup> District, Tim Norton 2<sup>nd</sup> District  
 Karl Peterjohn 3<sup>rd</sup> District, Richard Ranzau 4<sup>th</sup> District  
 James Skelton 5<sup>th</sup> District  
 525 N Main, Suite 320  
 Wichita, Kansas 67203  
 316-660-9300

**Mission:**

- Assure quality public services are provided for the present and future well-being of the citizens of Sedgwick County.



**Program Information**

The Board of County Commissioners is the governing body of Sedgwick County, responsible for setting policies for the entire organization and the appropriation of resources to accomplish adopted policies. The Board also serves as the hearing panel on tax appeals, County Board of Canvassers for elections, Board of Health, and the Governing Body of Fire District 1.

The Sedgwick County Commissioners are vested by Kansas Statute with both legislative and administrative powers and duties for governing Sedgwick County. Most of these responsibilities are provided in Chapter 19, Article 2 of the Kansas Statutes. These powers and duties include the following:

- Supervision of County property
- Organization of townships
- Control of the financial affairs of the County
- Approval of the annual County budget
- Levying of County taxes

- Designation of depositories for the County Treasurer
- Construction and maintenance of County roads and bridges
- Approval of land use and zoning policies
- Issuance of bonds
- Awarding of contracts
- Incorporation of cities
- Creation of special districts
- Setting salaries of all County officials
- Providing a jail, courthouse, office space, and supplies for all County officers and the District Court
- Appointment of members of various boards and commissions

In fulfilling its legislative responsibilities, the Board of Sedgwick County Commissioners considers resolutions which are equivalent to “bills” in the United States Congress and the Kansas Legislature and to ordinances considered by municipal governing councils. A resolution generally originates at the request of a Commissioner, another elected official, the County



Manager, or a department director. Resolutions are drafted by the County Counselor’s Office.

Before voting on a proposed resolution, it is discussed by the Board of County Commissioners at a public meeting. Any citizen may appear before the Board to speak, up to five minutes, either in favor of or in opposition to the resolution. The Board votes on the resolution following discussion. Adoption of an Ordinary resolution requires a majority (three or more) “yes” votes from the Board. Resolutions become effective on passage or upon publication, if required.

If there is a State law on a subject that applies to a particular county, but the law does not apply to all counties uniformly, a Charter resolution is necessary to deal with that subject. A Charter resolution requires four “yes” votes and is subject to a protest petition. If a protest petition is filed, the matter must go before a vote of the people.

Commissioners are elected from five single member districts for staggered four-year terms. One Commissioner serves as the Chairperson of the Board for a one-year term and is selected by the other members of the Board. Weekly meetings are held in the Commission Meeting Room on the 3<sup>rd</sup> floor of the County Courthouse every Wednesday at 9:00 a.m. and are open to the public. Public broadcast of meetings, with closed captioning, can be viewed on KPTS Channel 8 or at [www.sedgwickcounty.org](http://www.sedgwickcounty.org). Rebroadcasts are aired on Wichita’s Cable Channel 7 each Wednesday at 6:00 p.m. and Saturday and Sunday at 10:00 a.m.

**Advisory Boards and Committees**

As mentioned above, the Sedgwick County Board of County Commissioners has the power to appoint Sedgwick County citizens to Advisory Boards and Committees through resolutions. These citizens provide hours of valuable service and input to the County Commission. Examples of Advisory Boards and

Committees appointed by County Commission Resolution are as follows:

- Access Advisory Board
- Advisory Council on Aging
- Animal Care Advisory Board
- Building Examiners and Appeals Board
- Central Plains Quad County Planning Forum
- Community Corrections Advisory Board
- Community Housing Services
- Criminal Justice Coordinating Council
- Electrical Examiners & Appeals Board
- Fire Code Board of Appeals
- Regional Forensic Science Center Advisory Board
- Grievance Board
- Juvenile Corrections Advisory Board
- Metropolitan Area Planning Commission
- Mechanical Examiners & Appeals Board
- Mental Health Advisory Board
- Nuisance Appeals Board
- Physical/ Developmental Disabilities Advisory Board
- Plumbing Examiners & Appeal Board
- Public Building Commission
- Sanitary Code Advisory Board (Onsite Wastewater Installers/Sewage Haulers)
- Solid Waste Management Committee
- South Central Kansas Economic Development District
- Stormwater Management Advisory Board
- Wichita Airport Advisory Board
- Zoning Appeals Board

**Goals & Initiatives**

- Establish, maintain and nurture partnerships to ensure effective and efficient delivery of service
- Train, encourage and recognize employees for hard work, creativity and innovation in delivering quality public services
- Foster two-way communication with citizens and employees to build trust, confidence and teamwork, and to ensure informed decisions
- Allocate and use resources for basic and essential services that are responsive to the changing needs of our community

**Budget Adjustments**

Changes to the County Commissioners’ 2012 budget reflect a reduction in commodities and contractals spending.

**Significant Adjustments From Previous Budget Year**

- Reduction in contractals
- Reduction in commodities

Expenditures	Revenue	FTEs
(3,035)		
(2,500)		

<b>Total</b>	(5,535)	-	-
--------------	---------	---	---

**Budget Summary by Category**

	2010 Actual	2011 Adopted	2011 Revised	2012 Budget	% Chg. '11-'12
<b>Expenditures</b>					
Personnel	688,937	720,204	722,469	720,140	-0.3%
Contractual Services	42,503	37,500	35,300	32,265	-8.6%
Debt Service	-	-	-	-	
Commodities	4,068	3,000	5,200	2,700	-48.1%
Capital Improvements	-	-	-	-	
Capital Equipment	-	-	-	-	
Interfund Transfers	-	-	-	-	
<b>Total Expenditures</b>	<b>735,509</b>	<b>760,704</b>	<b>762,969</b>	<b>755,105</b>	<b>-1.0%</b>
<b>Revenue</b>					
Taxes	-	-	-	-	
Intergovernmental	-	-	-	-	
Charges For Service	-	-	-	-	
Other Revenue	-	157	157	63	-59.9%
<b>Total Revenue</b>	<b>-</b>	<b>157</b>	<b>157</b>	<b>63</b>	<b>-59.9%</b>
<b>Full-Time Equivalents (FTEs)</b>	<b>7.00</b>	<b>7.00</b>	<b>7.00</b>	<b>7.00</b>	<b>0.0%</b>

**Budget Summary by Fund**

Expenditures	2011 Revised	2012 Budget
General Fund-110	762,969	755,105
<b>Total Expenditures</b>	<b>762,969</b>	<b>755,105</b>

**Budget Summary by Program**

Program	Fund	Expenditures				2012 Budget	% Chg. '11-'12	Full-Time Equivalents (FTEs)		
		2010 Actual	2011 Adopted	2011 Revised	2011 Adopted			2011 Revised	2012 Budget	
Commission	110	735,509	760,704	762,969	755,105	-1.0%	7.00	7.00	7.00	
<b>Total</b>		<b>735,509</b>	<b>760,704</b>	<b>762,969</b>	<b>755,105</b>	<b>-1.0%</b>	<b>7.00</b>	<b>7.00</b>	<b>7.00</b>	



**Personnel Summary by Fund**

Position Title(s)	Fund	Band	Budgeted Personnel Costs			Full-Time Equivalents (FTEs)			
			2011 Adopted	2011 Revised	2012 Budget	2011 Adopted	2011 Revised	2012 Budget	
County Commissioner	110	ELECT	434,690	434,690	418,590	5.00	5.00	5.00	
Executive Secretary	110	B220	97,025	98,787	95,129	2.00	2.00	2.00	
<b>Subtotal</b>					<b>513,719</b>		<b>7.00</b>	<b>7.00</b>	<b>7.00</b>
Add:									
Budgeted Personnel Savings (Turnover)					-				
Compensation Adjustments					-				
Overtime/On Call/Holiday Pay					-				
Benefits					206,421				
<b>Total Personnel Budget*</b>					<b>720,140</b>				

\* The 2011 personnel budget accommodates one additional payroll posting period. The budget is not reflective of an individual employee's annual salary due to the timing variance between the posting of payroll and the employee's receipt of compensation.

