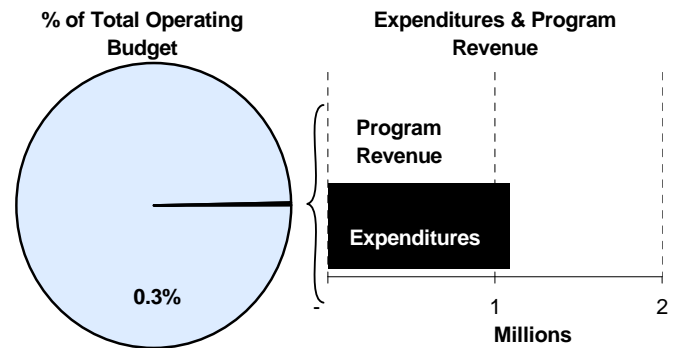
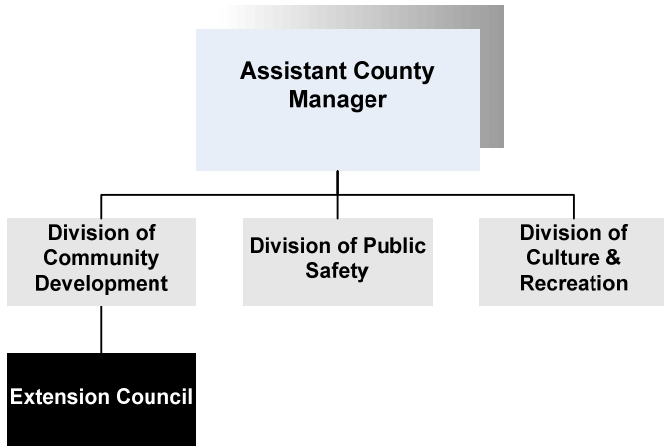




Bev Dunning
 Extension Center Director
 7001 W. 21st
 Wichita, KS 67205
 316-660-6100
bdunning@sedgwick.gov

Mission:

- ❑ Dedicated to a safe, sustainable, competitive food and fiber system and to strong, healthy communities, families, and youth through integrated research, analysis, and education.



Program Information

The Sedgwick County Extension Council provides educational seminars and information on a variety of topics:

- Family and Consumer Sciences including food safety, nutrition, clothing, housing, environmental issues, personal budgeting, parenting, assistance to the elderly regarding health care and insurance-related issues
- 4-H and educational opportunities for the positive development of youth
- Agriculture and Horticulture Education information to landowners regarding farming and gardening, soil testing, and information regarding composting and environmental safety

The Extension Council is funded by Sedgwick County, the federal government, and the State of Kansas. Both federal and State funds are allocated through Kansas State University. Sedgwick County allocates quarterly payments to the Extension Council for its annual contribution.

The County Extension Council is composed of 24 members. By national and state legislation, in Sedgwick County the council is elected at large. Six are elected in each of the four program areas, 4-H Youth Development, Community Development, Agriculture and Home Economics. Each one is elected to serve two years. If re-nominated, each may serve two, two year terms if elected. These six members in each of the four programs are called Program Development Committees. All citizens of voting age are eligible to vote in the at large election. This election is to be held not earlier than September 1, but not later than ten days before the annual meeting of the council.

At the annual meeting, the council elects from its own members, nine people to serve on the executive board, consisting of a chair, vice chair, secretary, treasurer and five other members. One member from each of the four program development committees must serve on the executive board, plus five others, randomly elected from the council.

Departmental Sustainability Initiatives

The Extension Program Development Committee reviews all Extension educational programs to evaluate the economic impact on families and producers. The Extension also partners with the small local communities enrolled in the PRIDE program through Kansas State University (KSU).

Agricultural agents and water specialists work with Sedgwick County producers to maintain environmental protection of waterways from agricultural run off.

The EARTH educational program, supported by the Kansas Department of Health and Environment (KDHE) through KSU, is designed to teach middle school youth to protect the environment. This program began in Sedgwick County and has now been implemented in 14 other Kansas counties, through the training efforts of Sedgwick County professionals.

Due to their close working relationship with federal, state, and local governments, the Extension Service was selected in April, 2008 for a federal review of their program delivery. Riley County and KSU were also involved in this review. The Extension’s reports were excellent and confirmed that their programs are available for all Sedgwick County citizens.

The Extension Service mails newsletters on a quarterly basis. Over the past two years, the Extension has encouraged citizens to sign up to receive their newsletter by e-mail, because of the increasing postage costs. Publication costs have also increased, so many of the bulletins used in educational classes are now being printed in-house, rather than purchased from an outside vendor.

Department Accomplishments

A new population outreach for horticulture was accomplished with the employment of an agent fluent in Spanish, who is now teaching Hispanic clientele to become growers. This will be a big asset when the 21st Street Market is in place. Over 200 master gardeners assist with horticulture outreach, volunteering 19,059 hours and reaching 27,831 direct client contacts in 2008.

The Expanded Food and Nutrition Program (EFNEP) provides nutrition education for families with limited resources. Kansas EFNEP nutrition assistants teach in homes, schools, assisted living sites, prisons, clinics, and libraries. Research shows that for each dollar invested in this education program, a savings of \$9 - \$12 occurs in health care costs. An additional savings for each dollar invested in the EFNEP program shows a savings of \$2.48 in food savings per shopping trip. This can reduce the need for emergency food assistance.

In 2008, the Extension Service sponsored the Senior Health Insurance Counseling Program (SHICK). Through the Family & Consumer Science department, the Extension Council coordinated training and education events for seniors and their volunteers. Due to these efforts, 63 volunteers were trained and 3,411 seniors were reached. These educational efforts yielded an annual savings per person of \$540, for a total of \$1,841,940.

Budget Adjustments

There are no changes to the Extension Council’s 2010 budget, because no increases were provided for contractuals from the 2009 Adopted budget for property tax supported funds.

Alignment with County Values

- **Open Communication -**
To bring unbiased, research-based “Knowledge for Life” from the university to you

Goals & Initiatives

- **Assist families in achieving a balance in their personal and community roles**
- **Improve sustainability and viability of Sedgwick County agriculture and livestock production**
- **Assist youth in developing life skills to become self-directing adults**
- **Protect natural resources and the environment through targeted educational programs**

Goals & Initiatives

- **Kansas State University “Builder Award” (top Extension award in the State)**

Significant Adjustments From Previous Budget Year

Expenditures Revenue FTEs

- No significant adjustments for the budget year

Total - - -

Budget Summary by Category **Budget Summary by Fund**

Expenditures	2008	2009	2009	2010	% Chg.	2009	2010	
	Actual	Adopted	Revised					Budget
Personnel	-	-	-	-	-	General Fund-110	1,087,473	1,087,473
Contractual Services	1,055,799	1,087,473	1,087,473	1,087,473	0.0%			
Debt Service	-	-	-	-	-			
Commodities	-	-	-	-	-			
Capital Improvements	-	-	-	-	-			
Capital Equipment	-	-	-	-	-			
Interfund Transfers	-	-	-	-	-			
Total Expenditures	1,055,799	1,087,473	1,087,473	1,087,473	0.0%	Total Expenditures	1,087,473	1,087,473
Revenue								
Taxes	-	-	-	-	-			
Intergovernmental	-	-	-	-	-			
Charges For Service	-	-	-	-	-			
Other Revenue	-	-	-	-	-			
Total Revenue	-	-	-	-	-			
Full-Time Equivalents (FTEs)	-	-	-	-	-			

Budget Summary by Program

Program	Fund	Expenditures				2010	% Chg.	Full-Time Equivalents (FTEs)		
		2008	2009	2009	2010			2009	2009	2010
		Actual	Adopted	Revised	Budget	09-10	Adopted	Revised	Budget	
Extension Council	110	1,055,799	1,087,473	1,087,473	1,087,473	0.0%	-	-	-	
Total		1,055,799	1,087,473	1,087,473	1,087,473	0.0%	-	-	-	

