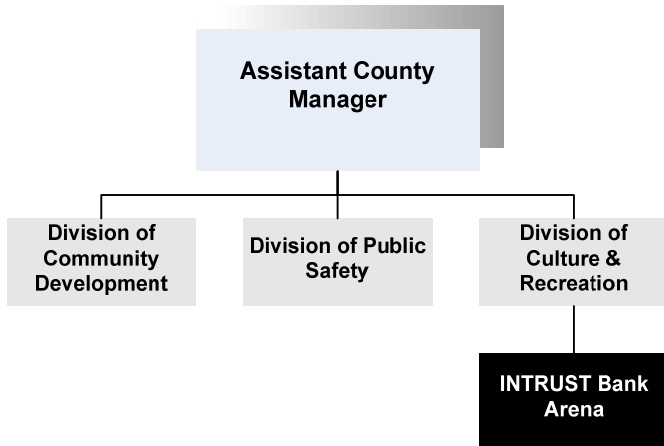




Chris Presson
General Manager
INTRUST Bank Arena
Wichita, Kansas 67203

Mission:

- The Sedgwick County Arena is a modern, first class sports and entertainment venue owned and operated by Sedgwick County, providing for 15,000 seats for basketball games. The Sedgwick County Arena will be home to indoor sporting events, concerts, family shows and other entertainment.



Program Information

Located in the center of a revitalizing area of downtown Wichita, the INTRUST Bank Arena is a modern, first-class, sports and entertainment venue. The Arena, with 15,000 seats for basketball and 20 executive and two party suites, is designed to provide maximum “fan experience” for all ages. The facility will be bordered by William Street on the North, Waterman Street on the South, the railroad tracks on the East and Emporia Street on the West.

The facility is owned by the Board of Sedgwick County Commissioners, with a Management Agreement with SMG to provide pre-opening services and management for the INTRUST Bank Arena. SMG manages stadiums, arenas, convention centers, and theaters around the world, and will assume management of the Arena when it opens in early 2010.

Construction costs associated with the INTRUST Bank Arena have been funded without debt from the proceeds of a special one-cent County sales tax, which was approved by voters in November, 2004. Senate Bill 58, signed on April 4, 2005 by Governor Kathleen Sebelius, authorized Sedgwick County to collect a one percent sales tax for a period of 30 months beginning July 1, 2005. The proceeds for this tax were specifically designated for the construction of an Arena in the downtown area of Wichita and renovations to the Coliseum Pavilions. This method allows for the Arena to be constructed while the revenue is collected, eliminating the need for securing bonds to finance the project, saving approximately \$112 million in interest. The Arena sales tax revenues exceeded projections and total \$206.5 million.

Construction is nearly complete in the downtown area of Wichita near the Oldtown district. Local general contractor Dondlinger & Sons partnered with Hunt Construction, a national firm with significant experience in building arenas. The construction team continues to work with the Arena designers, the Arena Design Consortium, in bringing to life the building's brick and limestone facades, and the expansive lobby view toward Kellogg will welcome visitors and blend with the surrounding architectural heritage. The location was selected to help generate further redevelopment efforts by the City of Wichita for the downtown area.

Management of the Arena will be done by SMG, a private company specializing in facility management of arenas for over 28 years. On June 23, 2008 SMG announced the selection of Chris Presson as the General Manager at the new INTRUST Bank Arena. Presson's impressive background in management, including ten years in executive level sports management, helped him secure the position. Presson is credited with many awards and accolades; most recently he led the turnaround of the Wichita Thunder Hockey team and negotiated the Wichita Wingnuts deal.

Departmental Sustainability Initiatives

The opening of the new Arena will contribute toward promoting, supporting and facilitating the creation of wealth and employment opportunities in downtown Wichita. The Metropolitan Area Planning Department (MAPD), which is jointly funded by Sedgwick County and the City of Wichita, is tasked with producing the neighborhood redevelopment plan for the area surrounding the INTRUST Bank Arena.

During construction, the Britt Brown Arena and Pavilions at the Kansas Coliseum will continue to operate as in the past, until February 2010. Once the Arena opens, the Pavilions will continue to operate in concert with the Arena, however, the mission of the Britt Brown Arena will be changed. Recently, Sedgwick

County solicited a request for proposals for the purpose of identifying developers for the Kansas Coliseum complex site. The objectives of the County are to provide continued usage of the pavilions, create new opportunities for the other areas of the Kansas Coliseum complex site, and to maximize revenue potential for the County. The due date for all bids was August 25, 2009. A recommendation has not yet been announced.

Department Accomplishments

One of the unique aspects of the Arena project has been the continuous citizen involvement. Commissioners have encouraged citizen engagement as a means of soliciting ideas, concerns and views throughout the process. Two citizen-based committees, the Citizen Arena Sales Tax Oversight Committee and the Citizen Design Review Committee were created to ensure public participation, as well as numerous public meetings. In addition, Sedgwick County uses the Sedgwick County website and streaming video in an effort to continue a transparent and open Arena planning process.

Budget Adjustments

INTRUST Bank Arena will remain within the parameters of the County's capital budget until its opening, at which time the Arena will be managed by SMG. A subsidy for the Pavilions at the Kansas Coliseum in 2010 is budgeted at \$584,989 in the Downtown Arena Tax Fund.

Arena Timeline

- **1977** - Kansas Coliseum built
- **November 2, 2004** - Sedgwick County Arena approved by Sedgwick County voters.
- **April 4, 2005** - Governor signs Senate Bill 58
- **July 1, 2005** - Sales tax begins
- **July 27, 2005** - Arena Design Consortium awarded contract for engineering and architect services for the Arena.
- **November 2005** - Site selection complete
- **January 2006** - Land acquisition begins
- **May 24, 2006** - Exterior design selected
- **November 2006** - Start bid process to hire general contractor for Pavilion upgrade
- **June 2007** - Arena Design Consortium awarded contract for engineering and architect services for the Arena.
- **July 2007** - Site demolition completed
- **September 2007** - Arena construction begins
- **September 2007** - Pavilions closed for renovations (May - Sept.)
- **December 2007** - Sales tax ends
- **Early 2010** - Arena construction complete

Significant Adjustments From Previous Budget Year

- Shift Pavilion subsidy from the General Fund to the Downtown Arena Fund

Expenditures	Revenue	FTEs
584,989		

Total	584,989	-	-
--------------	---------	---	---

Budget Summary by Category

Budget Summary by Fund

	2008 Actual	2009 Adopted	2009 Revised	2010 Budget	% Chg. 09-10
Expenditures					
Personnel	-	-	-	-	
Contractual Services	-	-	-	-	
Debt Service	-	-	-	-	
Commodities	-	-	-	-	
Capital Improvements	-	-	-	-	
Capital Equipment	-	-	-	-	
Interfund Transfers	-	-	-	584,989	
Total Expenditures	-	-	-	584,989	
Revenue					
Taxes	-	-	-	-	
Intergovernmental	-	-	-	-	
Charges For Service	-	-	-	-	
Other Revenue	-	-	-	-	
Total Revenue	-	-	-	-	
Full-Time Equivalents (FTEs)	-	-	-	-	

	2009 Revised	2010 Budget
Expenditures		
Downtown Arena-551	-	584,989
Total Expenditures	-	584,989

Budget Summary by Program

Program	Fund	Expenditures				2010 Budget	% Chg. 09-10
		2008 Actual	2009 Adopted	2009 Revised	2010 Budget		
Pavilion Operations	551	-	-	-	584,989		
Total		-	-	-	584,989		

Full-Time Equivalents (FTEs)		
2009 Adopted	2009 Revised	2010 Budget
-	-	-
-	-	-

