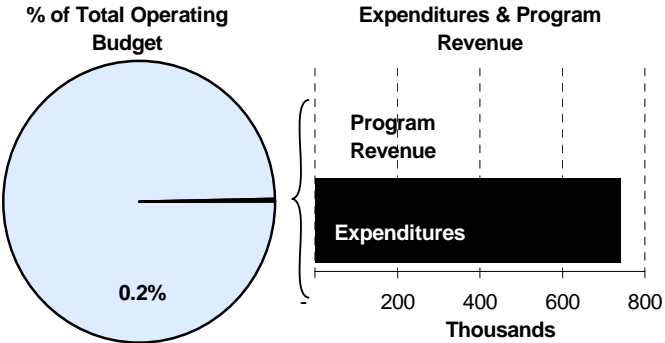
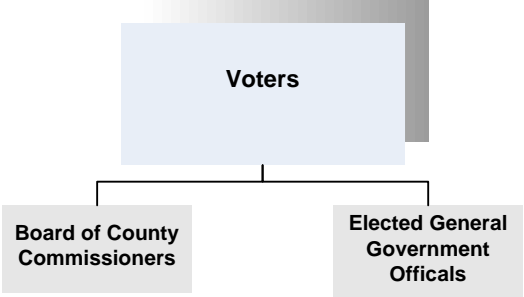




Commissioners
 David Unruh 1st District, Tim Norton 2nd District
 Karl Peterjohn 3rd District, Kelly Parks 4th District
 Gwen Welshimer 5th District
 525 N Main, Suite 320
 Wichita, Kansas 67203
 316-660-9300

Mission:
 □ Assure quality public services are provided for the present and future well-being of the citizens of Sedgwick County.



Program Information

The Board of County Commissioners is the governing body of Sedgwick County, responsible for setting policies for the entire organization and the appropriation of resources to accomplish adopted policies. The Board also serves as the hearing panel on tax appeals, County Board of Canvassers for elections, Board of Health, and the Governing Body of Fire District No. 1.

The Sedgwick County Commissioners are vested by Kansas Statute with both legislative and administrative powers and duties for governing Sedgwick County. Most of these responsibilities are provided in Chapter 19, Article 2 of the Kansas Statutes. These powers and duties include the following:

- Designation of depositories for the County Treasurer
- Construction and maintenance of County roads and bridges
- Approval of land use and zoning policies
- Issuance of bonds
- Awarding of contracts
- Incorporation of cities
- Creation of special districts
- Setting salaries of all County officials
- Providing a jail, courthouse, office space, and supplies for all County officers and the District Court
- Appointment of members of various boards and commissions

- Supervision of County property
- Organization of townships
- Control of the financial affairs of the County
- Approval of the annual County budget
- Levying of County taxes

In fulfilling its legislative responsibilities, the Board of Sedgwick County Commissioners consider resolutions which are equivalent to “bills” in the United States Congress and the Kansas Legislature and to ordinances considered by municipal governing councils. A resolution generally originates as the request of a Commissioner, another elected official, the County

Manager, or a department director. Resolutions are drafted by the County Counselor’s Office.

Before voting on a proposed resolution, it is discussed by the Board of County Commissioners at the public meeting. Any citizen may appear before the Board to speak, up to five minutes, either in favor of or in opposition to the resolution. The Board votes on the resolution following discussion. Adoption of an Ordinary resolution requires a majority (three or more) “yes” votes from the Board. Resolutions become effective on passage or upon publication, if required.

If there is a state law on a subject that applies to a particular county, but the law does not apply to all counties uniformly, a Charter resolution is necessary to deal with that subject. A Charter resolution requires four “yes” votes and is subject to a protest petition. If a protest petition is filed, the matter must go before a vote of the people.

Commissioners are elected from five single member districts for staggered four-year terms. One Commissioner serves as the Chairperson of the Board for a one-year term and is selected by the other members of the Board. Weekly meetings are held in the Commission Meeting Room on the 3rd floor of the County Courthouse every Wednesday at 9:00 a.m. and are open to the public. Public broadcast of meetings, with closed captioning, can be viewed on KPTS Channel 8 or at www.sedgwickcounty.org. Rebroadcasts are aired on Wichita’s Cable Channel 7 each Wednesday at 6:00 p.m. and Saturday and Sunday at 10:00 a.m.

Advisory Boards and Committees

As mentioned above, the Sedgwick County Board of County Commissioners has the power to appoint Sedgwick County citizens to Advisory Boards and Committees through resolutions. These citizens provide hours of valuable service and input to the County Commission. Examples of Advisory Boards and

Committees appointed by County Commission Resolution are as follows:

- Alcohol and Drug Abuse Advisory Board
- Aging Council
- Animal Care Advisory Board
- Arts and Humanities Council
- Building Examiners and Appeals
- Central Plains Quad County Planning Forum
- Community Housing Services
- Coordinated Transit District
- Developmental/Physical Disabilities Advisory Board
- Electrical Examiners and Appeals
- Employee Suggestion Awards Committee
- Fire Code Board of Appeals
- Forensic Science Center Advisory Board
- Grievance Board
- Board of Health
- Human Services Board
- Juvenile Corrections Advisory Board
- Kansas Coliseum Advisory Board
- Metropolitan Area Planning Commission
- Mechanical Examiners and Appeals
- Mental Health Advisory Board
- Plumbing Examiners and Appeals
- Project Freedom Family and Youth Coalition
- Public Building Commission
- SCKEDD Executive Committee
- Sheriff’s Civil Service Board
- Solid Waste Management Committee
- Wichita Airport Authority
- Zoning Appeals Board

Goals & Initiatives

- Establish, maintain and nurture partnerships to ensure effective and efficient delivery of service
- Train, encourage and recognize employees for hard work, creativity and innovation in delivering quality public services
- Foster two-way communication with citizens and employees to build trust, confidence and teamwork, and to ensure informed decisions
- Allocate and use resources for basic and essential services that are responsive to the changing needs of our community

Budget Adjustments

Changes to the County Commissioners’ 2010 budget reflect an increase in benefits costs and a 2.0 general pay adjustment for employees earning less than \$75,000. In addition, commodities were decreased by \$6,000.

Significant Adjustments From Previous Budget Year

- Reduction in commodities

Expenditures	Revenue	FTEs
(6,000)		

Total	(6,000)	-	-
--------------	---------	---	---

Budget Summary by Category

	2008 Actual	2009 Adopted	2009 Revised	2010 Budget	% Chg. 09-10
Expenditures					
Personnel	649,320	672,533	672,533	684,212	1.7%
Contractual Services	33,507	51,120	51,120	53,120	3.9%
Debt Service	-	-	-	-	
Commodities	2,831	12,000	12,000	4,000	-66.7%
Capital Improvements	-	-	-	-	
Capital Equipment	-	-	-	-	
Interfund Transfers	-	-	-	-	
Total Expenditures	685,657	735,653	735,653	741,332	0.8%
Revenue					
Taxes	-	-	-	-	
Intergovernmental	-	-	-	-	
Charges For Service	-	-	-	-	
Other Revenue	480	530	530	490	-7.5%
Total Revenue	480	530	530	490	-7.5%
Full-Time Equivalents (FTEs)	7.00	7.00	7.00	7.00	0.0%

Budget Summary by Fund

Expenditures	2009 Revised	2010 Budget
General Fund-110	735,653	741,332
Total Expenditures	735,653	741,332

Budget Summary by Program

Program	Fund	Expenditures				2010 Budget	% Chg. 09-10	Full-Time Equivalents (FTEs)		
		2008 Actual	2009 Adopted	2009 Revised	2009 Adopted			2009 Revised	2010 Budget	
Commission	110	685,657	735,653	735,653	741,332	0.8%	7.00	7.00	7.00	
Total		685,657	735,653	735,653	741,332	0.8%	7.00	7.00	7.00	



Personnel Summary by Fund

Position Title(s)	Fund	Band	Budgeted Personnel Costs			Full-Time Equivalents (FTEs)			
			2009 Adopted	2009 Revised	2010 Budget	2009 Adopted	2009 Revised	2010 Budget	
County Commissioner	110	ELECT	404,435	418,590	418,590	5.00	5.00	5.00	
Executive Secretary	110	B220	88,547	91,616	91,616	2.00	2.00	2.00	
Subtotal					510,206		7.00	7.00	7.00
Add:									
Budgeted Personnel Savings (Turnover)					-				
Compensation Adjustments					1,832				
Overtime/On Call					-				
Benefits					172,174				
Total Personnel Budget					684,212				

