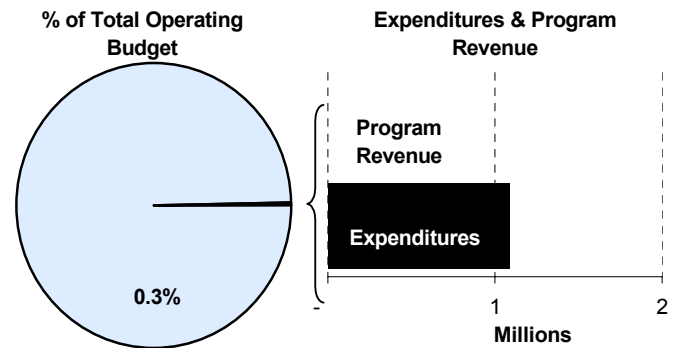
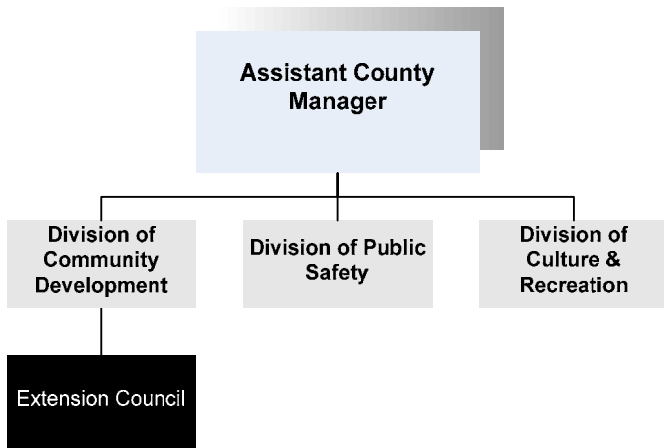




Bev Dunning
 Extension Center Director
 7001 W. 21st
 Wichita, KS 67205
 316-722-7721
bdunning@sedgwick.gov

Mission:

- ❑ **Dedicated to a safe, sustainable, competitive food and fiber system and to strong, healthy communities, families, and youth through integrated research, analysis, and education.**



Program Information

The Sedgwick County Extension Council provides educational seminars and information on a variety of topics:

- Family and Consumer Sciences including food safety, nutrition, clothing, housing, environmental issues, personal budgeting, parenting, assistance to the elderly regarding health care and insurance-related issues.
- 4-H and educational opportunities for the positive development of youth.
- Agriculture and Horticulture Education information to landowners regarding farming and gardening, soil testing, and information regarding composting and environmental safety.

The Extension Council is funded by Sedgwick County, the federal government, and the State of Kansas. Both federal and State funds are allocated through Kansas State University. Sedgwick County allocates quarterly

payments to the Extension Council for its annual contribution.

The County Extension Council is composed of 24 members. By national and state legislation, in Sedgwick County the council is elected at large. Six are elected in each of the four program areas, 4-H Youth Development, Community Development, Agriculture and Home Economics. Each one is elected to serve two years. If re-nominated, each may serve two, two year terms if elected. These six members in each of the four programs are called Program Development Committees. All citizens of voting age are eligible to vote in the at large election. This election is to be held not earlier than September 1, but not later than ten days before the annual meeting of the council.

At the annual meeting, the council elects from its own members, nine people to serve on the executive board, consisting of a chair, vice chair, secretary, treasurer and five other members. One member from each of the four program development committees must serve on the executive board, plus five others, randomly elected from the council.



Departmental Sustainability Initiatives

The Pollution Prevention Institute (PPI) is an agency within Engineering Extension of Kansas State University. PPI’s vision is for a healthy Kansas environment that fosters economic and environmental sustainability and growth. PPI provides confidential, technical, environmental pollution prevention and compliance assistance to businesses and institutions. PPI also operates the Kansas Small Business Environmental Assistance Program (SBEAP). SBEAP is an air-forced assistance program mainly serving Kansas small businesses. SBEAP is funded by the Kansas Department of Health and Environment (KDHE).

Through 4-H and the youth development programs, the Extension Council is working to assist youth in developing life skills. Eight critical elements of positive youth development include:

- *Positive Relationship with a Caring Adult* Advisor, Guide, Coach, Helper, Mentor
- *Safe Environment – Emotional & Physical* For Youth, Volunteers and Spectators
- *Opportunity for Mastery* Building Knowledge, Skills, and Attitudes
- *Opportunity to Value and Practice Service* Civic Responsibility, Community Needs
- *Opportunity for Self-determination* Becoming Self-directing, Autonomous Adults
- *Inclusive Environment* Sense of Belonging, Encouragement and Celebration
- *To be an Active Participant in the Future* Planning, Setting, and Implementing Goals
- *Engagement in Learning* Do, Reflect, Apply

Department Accomplishments

Horticulture continues to assist businesses and home owners with adapted plant and tree selections for South Central Kansas. Over 225 Master Gardeners assist with

horticulture outreach, volunteering 18,423 hours and reaching 41,860 direct client contacts in 2007.

The Expanded Food and Nutrition Education Program (EFNEP) provides nutrition education for families with limited resources. Kansas EFNEP nutrition assistants teach in homes, schools, assisted living sites, prisons, clinics and libraries.

In 2007, the Extension Service sponsored the Health Insurance Counseling Program (SHICK). Through the Family and Consumer Science department, the Extension Council coordinated training and educational events for seniors considering enrollment in a Medicare D prescription drug program. There are currently 60,000 Medicare recipients in Sedgwick County. Due to the efforts of the Extension Council, a total 26,841 seniors received information to determine which prescription drug program was right for them.

The Women’s Investment Education Program is a program developed by Sedgwick County Extension’s Family and Consumer Science agent to specifically assist women in managing their savings today and planning for a secure financial future. The program was offered three times in 2007, with an average enrollment of 68 individuals. To date over 500 individuals have been trained. Additionally, Kansas Saves is in its third year as a participant in the Family and Consumer Science department. This program assists all persons in saving and building wealth more effectively. By participating in this program, each person receives a newsletter from America Saves with helpful ideas about saving for the future.

Budget Adjustments

Changes to the Extension Council 2009 budget reflects a 3.0 percent increase in contractals from the 2008 Adopted budget.

Alignment with County Values

- **Open Communication -**
To bring unbiased, research-based “Knowledge for Life” from the university to you

Goals & Initiatives

- **Assist youth in developing life skills to become self-directing adults**
- **Protect natural resources and the environment through targeted educational programs**
- **Improve sustainability and viability of Sedgwick County agriculture and livestock production**
- **Assist families in achieving a balance in their personal and community roles**

