



SEDGWICK COUNTY, KANSAS
DIVISION OF FINANCE
PURCHASING DEPARTMENT

525 N. Main, Suite 823 ~ Wichita, KS 67203
Phone: 316 660-7255 Fax: 316 383-7055

<http://sedgwickcountv.org/finance/purchasing.asp>

Request for Bid
#12-0114
Adult Detention Facility Master Control Upgrade
Addendum #3

March 7, 2013

The following is to ensure that vendors have complete information prior to submitting a bid. Here are some clarifications regarding the bid for the Adult Detention Facility Master Control Upgrade.

Questions and/or statements of clarification are in bold font, answers to specific questions are italicized.

1. What needs to be done with the old camera system?

Old camera system will be upgraded from analog to digital. Run analog system to end of project. Once new digital system is fully operational, old analog system can be demolished.

2. What needs to be done with the old equipment cabinets?

Old cabinets will be used to splice and extend control wiring per Details 8 and 9/SE8.0.

3. Does the project require additional Control Points beyond what is currently used?

There are several new Control Points shown in the Project Documents. New Control Points will require conduit/cable to equipment closets as shown.

4. Define cutover requirements for Simplex Fire Alarm system.

The existing Simplex security system integrates door control, fire alarm, deluge sprinkler and smoke control systems. This project will separate the door control from the fire alarm, deluge sprinkler and smoke control systems. A new fire alarm, sprinkler, and smoke control PC annunciator will be provided at New Master Control room A11 per Specification 28 31 00. The Simplex fire alarm, sprinkler, and smoke control annunciation contractor must provide a technician on site for the duration of the door control cutover process per Specification 28 31 00 – 2.07.

5. What are the major issues with the existing Simplex control and door relay system?

The existing Simplex system has outlived its useful life. Parts to maintain the existing system have been discontinued. Facility experiences intermittent problems with door control.

6. Which areas require cabling to be run in conduit, and which areas can cable be run free air?

All cable exposed to inmates must be run in conduit. See Conduit and Cabling General Notes as listed on Sheet SE01.

- 7. Reading the bidding documents I am confused of what the base bid consist of. For example is all the corridors, stairway doors, doors in the basement, security electronic room dorms, vestibule doors leading to the corridors, all the first floor level area b, c... are these areas in the base bid? Please clarify.**

Everything shown on the Detention Equipment Drawings is included in the base bid. Unit price for additional lock replacements (per Pod) would include all additional dayroom and cell doors (as indentified by Sheet Note 1) for each additional Pod.

- 8. The detention Equipment drawings do not show pod 21 and 22 which are the third level and mezzanine of the 3rd level. The phasing plan on CP2.3 shows these pods. Is there any Detention Equipment work in those pods? If so, please provide a drawing for those.**

Scope of Detention Equipment work for Pods 21 and 22 is defined on Detail 1/DE2.1MD (see note "Typical at Rooms D104M, D204M and D304M") and Detail 1/DE2.2D (see note "Similar at Door N2100A, N2100B, and N2200").

- 9. Door Mark N1000B on drawing De2.1C provides note 3 & 2. The door and frame schedule shows a new door, frame, and hardware. The same goes for Door N900B. Please clarify what these doors need.**

Openings N1000B and N900B require frame elevation S2 (rework lock jamb per Detail 10/DE8.0) and door elevation SC (provide new louver per Detail 13/DE8.0). The existing door and frame can be re-used at these Openings.

- 10. Door C193 on drawing DE2.1C has a note to upgrade Existing SS 1100 pneumatic lock to new 10300P. Is this correct?**

See Addendum 3, item 24 for scope of Work at Opening C193.

- 11. Door on the door schedule N1100B has listed door, a door frame, and hardware. On drawing DE2.1D it has a note 1 &2. Please clarify what this entire door needs.**

Openings N1100B requires frame elevation S2 (rework lock jamb per Detail 10/DE8.0) and door elevation SC (provide new louver per Detail 13/DE8.0). The existing door and frame can be re-used at this Opening.

- 12. Does this Project require new a new building automation system?**

The existing Siemens building automation system shall be expanded to cover all work in the remodeled areas. Temperature sensors for new CRAC units in Security Electronic Equipment rooms shall annunciate at 2nd floor of Historic Courthouse in County IT room via E-Mail alert to IT Director Mike Elpers. See Addendum 3, item15 for clarification.

The following are Changes to Specifications:

13. Section 08 14 16 – Flush Wood Doors

- a. Delete Section in its entirety.

14. Section 11 19 00 – Detention Equipment General Requirements

- a. 1.04 – Acceptable DEC Contractors: Replace in its entirety with the following DEC Contractors as pre-approved by Section 00 11 53:
 - A. CCC Group – San Antonio, TX
 - B. Cornerstone Detention Products – Tanner, AL
 - C. Southern Folger Detention Equipment Company – San Antonio, TX
 - D. Stronghold Industries – Racine, WI
 - E. Sweeper Metal Fabricators – Drumright, OK

15. Section 23 81 33 – Computer Room Air Conditioning Units

- a. 2.06: Add the following paragraph:
 - C. Provide Web interface to send E-Mail alerts to Mike Jones of Facilities and Mike Elpers of County IT with operational alarms. Provide data jack each CRAC location with conduit/cable to nearest IT closet for link to County LAN.

16. Section 26 33 53 – Three Phase Uninterruptible Power Supply

- a. 2.02-G-1-a: Add the following item:
 - 4) Program Web interface to send E-Mail alerts to Mike Jones of Facilities and Mike Elpers of County IT with operational alarms. Provide data jack each UPS location with conduit/cable to nearest IT closet for link to County LAN.

17. Section 28 46 00 – Security System General Requirements

- a. 1.04 – Acceptable SEC Contractors: Replace in its entirety with the following SEC Contractors as pre-approved by Section 00 11 53:
 - A. Accurate Controls – Ripon, WI
 - B. EO Integrated – Washington, MI
 - C. Southwestern Communications – Decatur, AL
 - D. Stanley Security Solutions, Noblesville, IN
- b. 3.06 – Add the following paragraph:
 - D. Include an additional 8 hours training time with County IT personnel and maintenance to review all Security System Source Codes and IP configurations. Source codes are to be turned over to Mike Elpers of County IT for management upon completion of project.

18. Section 28 46 10 – Security System Control and Monitoring

- a. 2.02-G: Change “XP or Vista” to “XP or Windows 7.0.”
- b. 2.02-N – Add the following item:
 - 9. Coordinate all integration with County LAN with Mike Elpers of County IT (second floor of Historic Courthouse). All access to County LAN must be pre-approved through Mike Elpers.
- c. 2.24-A - Add the following items:
 - 8. One spare LAN network switch.
 - 9. One spare video surveillance network switch.
 - 10. One spare door control network switch.

19. Section 28 46 40 – Card Access System

- a. 1.04-A: Change “Keri Systems – San Jose, CA” to “TAC i/Net Card Access System – Schneider Electric.”
- b. 1.05-A: Change “Mercury Security Corporation – Long Beach, CA” to “TAC i/Net Card Access Controllers – Sandifer Engineering & Controls – Goddard, KS.”
- c. 2.04-F: Delete paragraph in its entirety
- d. 2.05: Delete it its entirety. County will re-use existing TAC i/Net card subscription and management system.
- e. 2.06: Delete in its entirety and replace with the following:
 - A. SEC to integrate new TAC i/Net card access system with existing TAC i/Net reporting system.
- f. 2.12: Delete it its entirety. County will re-use existing TAC i/Net card development system.

20. Section 28 46 60 – Video Surveillance System

- a. 2.05-A: Delete items 1 thru 4 in their entirety. Replace with the following:
 - 1. Dell
 - 2. No known equal.
- b. 2.06-A: Delete items 1 thru 4 in their entirety. Replace with the following:
 - 1. Dell
 - 2. No known equal.
- c. 2.07-A: Delete items 1 thru 4 in their entirety. Replace with the following:
 - 1. Dell
 - 2. No known equal.

The following are Changes to Drawings:

21. Sheet A2.1 – Floor Plan

- a. ADA Installation Guidelines: Delete vertical grab bar and clarify under sink clearances.
- b. Detail 2: Revise B018A dimensions and Door B018A location and size.
- c. Detail 14: 5’-0” turning radius shown per plan review comments.

22. Sheet A2.2 – Casework Details

- a. Detail 13, 18, 19, and 30: Add note clarifying the use of fire retardant wood.
- b. Detail 18: Add note regarding tread profile.
- c. Detail 27: Add detail clarifying stair nosing details.
- d. Opening Schedule: Revise door B018A size and type
- e. Section 18/A2.2: The handrail design is drawn as intended. Exception 1 to article 210.1 of the ADA allows this design and the County ADA coordinator has approved this design.

23. Sheet DE0.1 – Detention Equipment Abbreviations, Notes and Schedules

- a. Opening N242: Change fire rating from “20” minutes to “90” minutes.

24. Sheet DE2.1C – Detention Equipment First Floor Level Area C

- a. Delete Sheet Note 1 in its entirety and replace with the following:
 - 1. Service existing sliding device. Replace both rollers, pneumatic air cylinder/solenoid and all limit/indications switches with new. Clean, grease and adjust. Replace all other worn parts from Owner stock.

25. Sheet DE2.2B – Detention Equipment Second Floor Level Area B

- a. Replace Sheet Note 5 in its entirety with the following:
 - 5. Upgrade existing commercial hollow metal frame with new electric strike. Provide Folger Adam EDC 310-2 3/4" x FS x 24VDC x LCBM x PC Electric Strike. Div. 28 SEC to integrate new electric strike with local door control push button at Reception Desk.
- b. Revise Openings C252A and C252B per *Supplemental Drawing SD-DE01 attached to this Addendum.*

26. Sheet SE4.01 – Enlarged Security Plan

- a. Delete General Note 1 in its entirety and replace with the following:
 - 1. Contractor to relocate all existing administrative phones and jail management equipment from Old Central Control to new. Extend conduit/cabling as required.
 - 2. Owner to replace existing officer radio system and repeaters with new. Contractor to demo existing officer radio system with demolition of Old Central Control.

27. Sheet SE2.2B – Security Electronics Second Floor Level Area B

- a. Add the following sheet notes:
 - 24. Re-stencil door frame header C311.
 - 25. Re-stencil door frame header C310.
 - 26. Provide conduit/cable from new electric strike to PLC/F and desk mounted push button this location.
- b. Revise Openings N271B, N265 and N267 per *Supplemental Drawing SD-SE01 attached to this Addendum.*

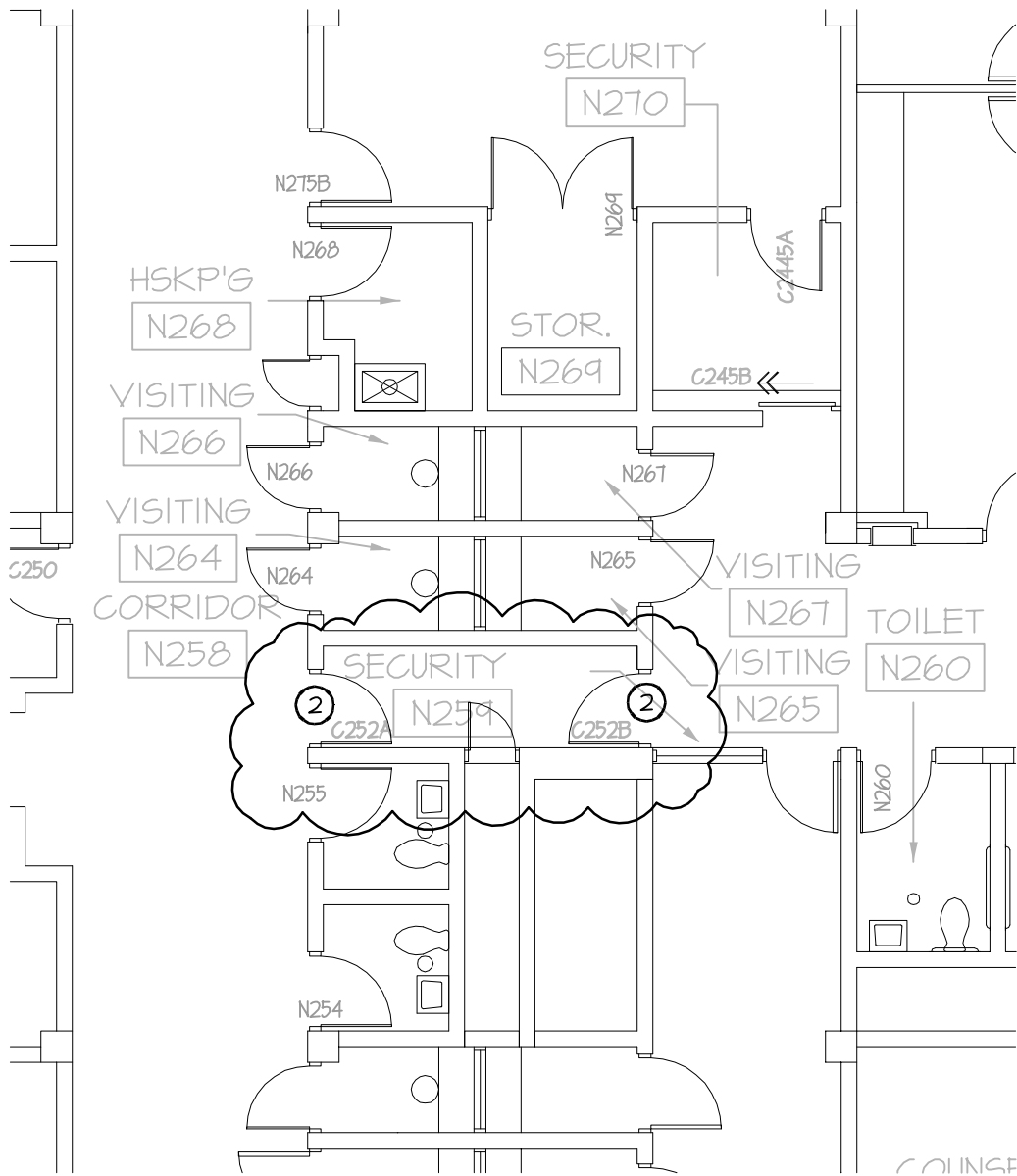
28. Sheet SE9.3 – Security Electronics Riser Diagrams

- a. Delete sheet note 2 in its entirety and replace with the following:
 - 2. Div 28 SEC responsible for expanding existing County-wide TAC i/Net card access system as manufactured by Sandifer Engineering & Controls (Goddard, KS) to Master Control System Upgrade as shown. Provide administrator with card subscription and management privileges, but no access to remote door control.

Firms interested in submitting a bid, must respond with complete information and all supplementary materials and **deliver on or before 1:45 p.m. (CDT), Tuesday, April 2, 2013.** Late bids will not be accepted and will not receive consideration for final award.

PLEASE ACKNOWLEDGE RECEIPT OF THIS ADDENDUM ON THE BID RESPONSE PAGE.

Joe Thomas, C.P.M.
Acting Purchasing Director



PARTIAL-DETENTION EQUIPMENT SECOND FLOOR LEVEL AREA B

SCALE: 1/8"=1'-0"



**ARNOLD AND
O'SHERIDAN INC**
CONSULTING ENGINEERS
STRUCTURAL ■ HVAC ■ PLUMBING
ELECTRICAL ■ TECHNOLOGY
MADISON, WISCONSIN (608) 821-8500
BROOKFIELD, WISCONSIN (262) 783-6130
WWW.ARNOLDANDOSHERIDAN.COM

Project Title:

SEDGWICK COUNTY
ADULT DETENTION FACILITY
MASTER CONTROL UPGRADE
WICHITA, KANSAS

Supplemental Drawing Number:

SD-DE01

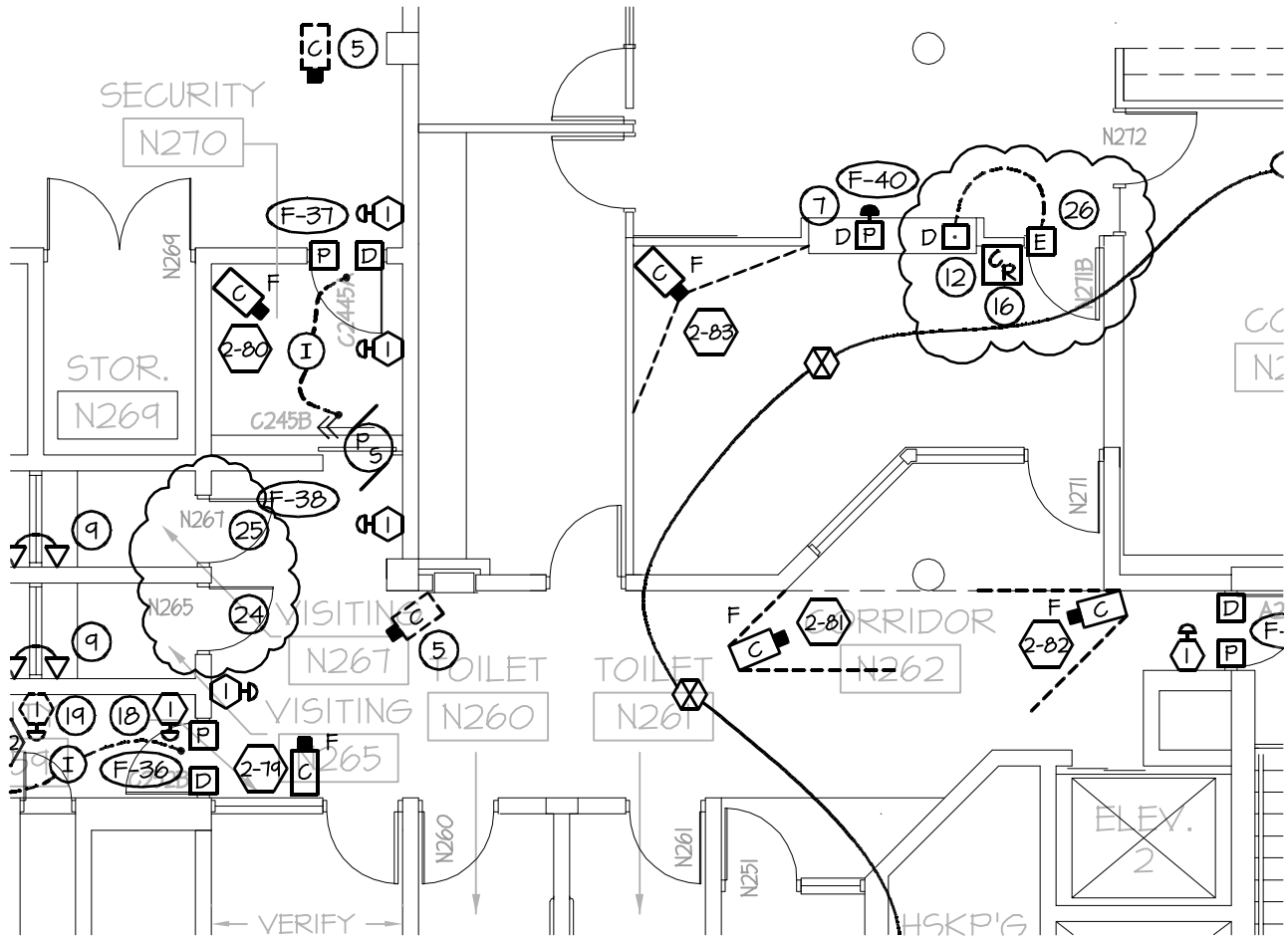
Reference Sheet Number: DE2.2B

Project Number:
111369

Revised By:
JAP

Date Issued:
03-07-2013

Issued With:
Addendum #3



PARTIAL-SECURITY ELECTRONICS SECOND FLOOR LEVEL AREA B

SCALE: 1/8"=1'-0"



**ARNOLD AND
O'SHERIDAN INC**
CONSULTING ENGINEERS
STRUCTURAL ■ HVAC ■ PLUMBING
ELECTRICAL ■ TECHNOLOGY
MADISON, WISCONSIN (608) 821-8500
BROOKFIELD, WISCONSIN (262) 783-6130
WWW.ARNOLDANDOSHERIDAN.COM

Project Title:

SEDGWICK COUNTY
ADULT DETENTION FACILITY
MASTER CONTROL UPGRADE
WICHITA, KANSAS

Supplemental Drawing Number:

SD-SE01

Reference Sheet Number: SE2.2B

Project Number:
111369

Revised By:
JAP

Date Issued:
03-07-2013

Issued With:
Addendum #3