

Criminal Justice Coordinating Council

Population Report & Program Trends

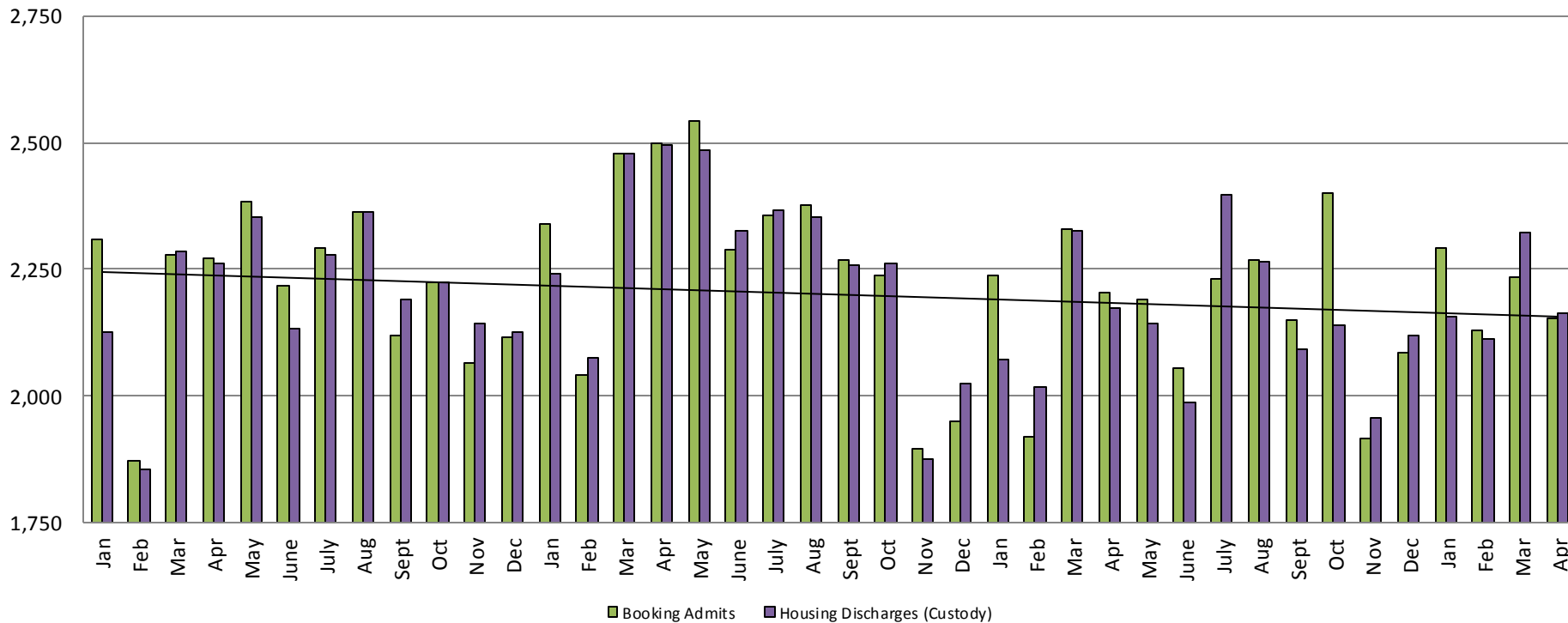
May 26, 2016



Sedgwick County...
working for you

Detention Facility

Booking Admits & Housing Discharges from Custody January 2013 - Present



Housing Discharges for April

2014 = 2,495
 2015 = 2,172
 2016 = 2,165

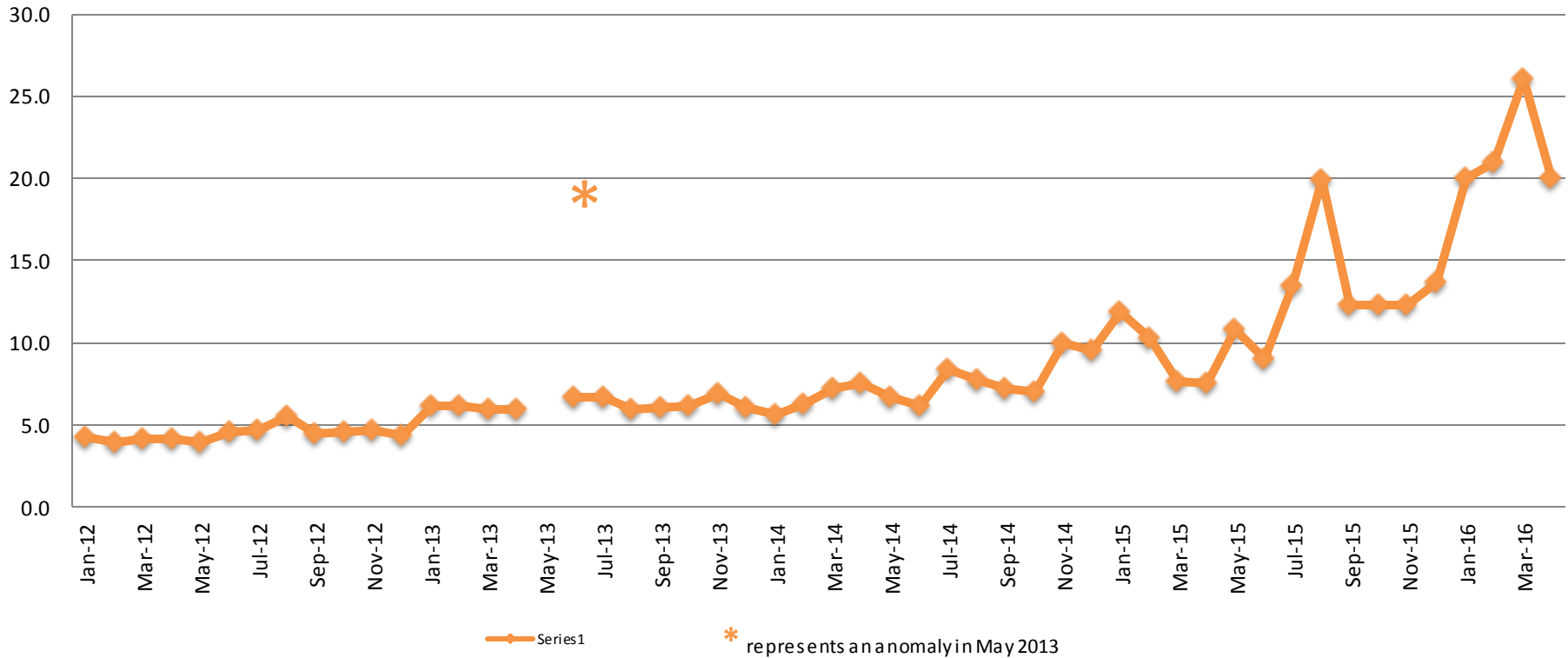
Bookings for April

2014 = 2,500
 2015 = 2,205
 2016 = 2,153



Average Length of Stay: Booking (Hours)

January 2012 - Present



April

2012 = 4.1

2013 = 5.9

2014 = 7.5

2015 = 7.5

2016 = 20.0

April YTD Avg.

2012 = 4.1

2013 = 6.0

2014 = 6.7

2015 = 9.3

2016 = 21.8

(data obtained from detention facility)

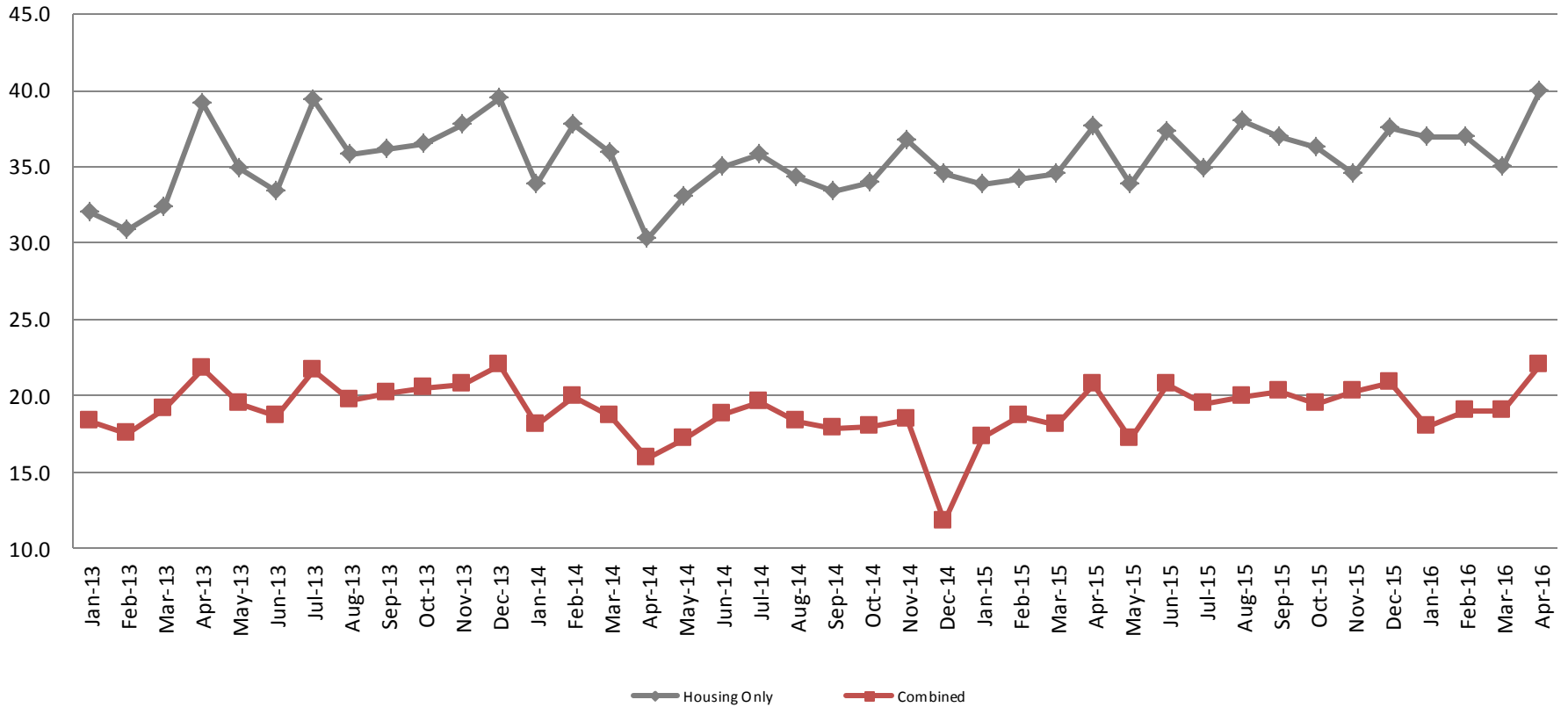


Sedgwick County...
working for you

Average Length of Stay: Housing & Combined (Days)

January 2013 - Present

Present



April Housing

2013 = 39.1
 2014 = 30.3
 2015 = 37.7
 2016 = 40.0

April Housing YTD Avg.

2013 = 33.6
 2014 = 34.5
 2015 = 35.1
 2016 = 37.3

April Combined

2013 = 21.8
 2014 = 15.9
 2015 = 20.7
 2016 = 22.0

April Combined YTD Avg.

2013 = 19.2
 2014 = 18.1
 2015 = 18.7
 2016 = 19.5

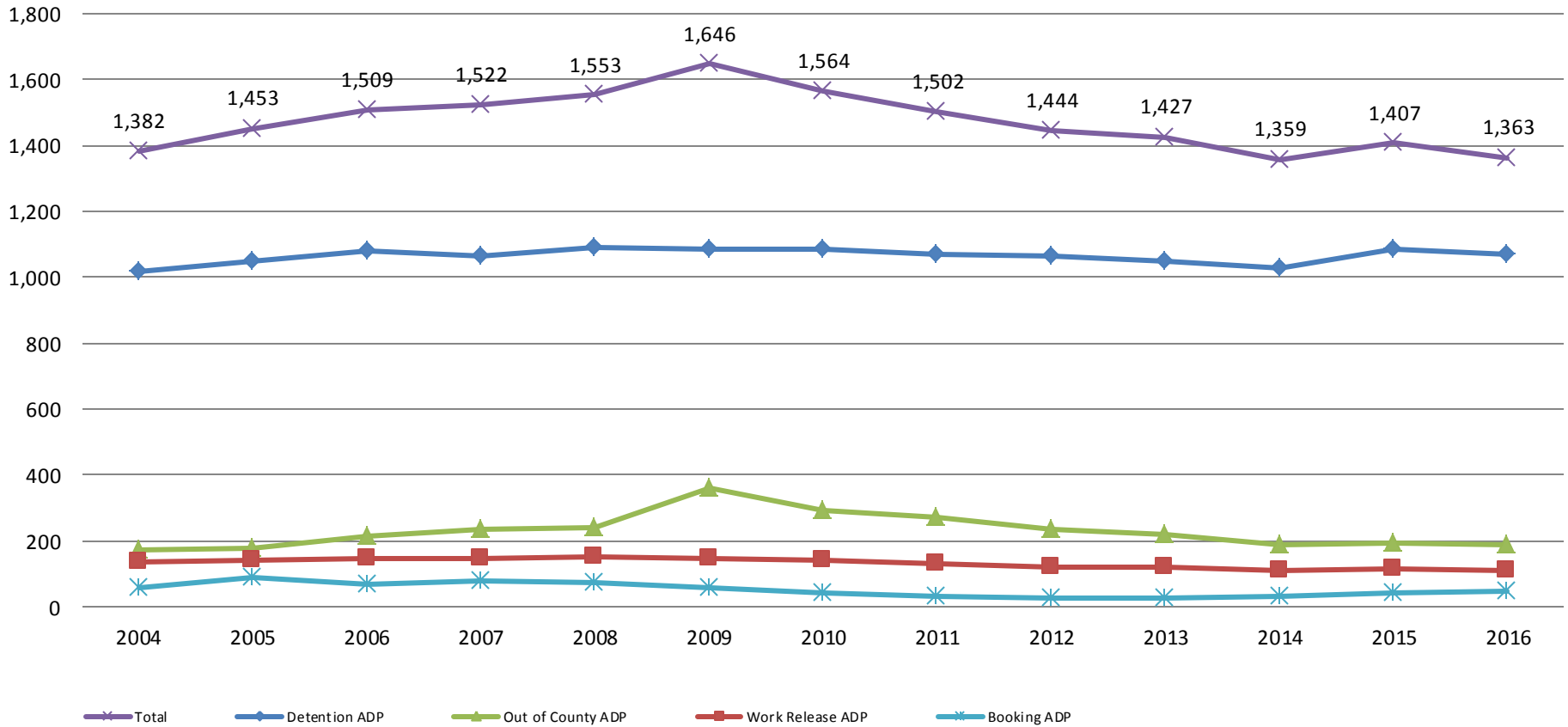


Sedgwick County...
 working for you

(data obtained from detention facility)

Jail: Annual Average Daily Population (ADP)

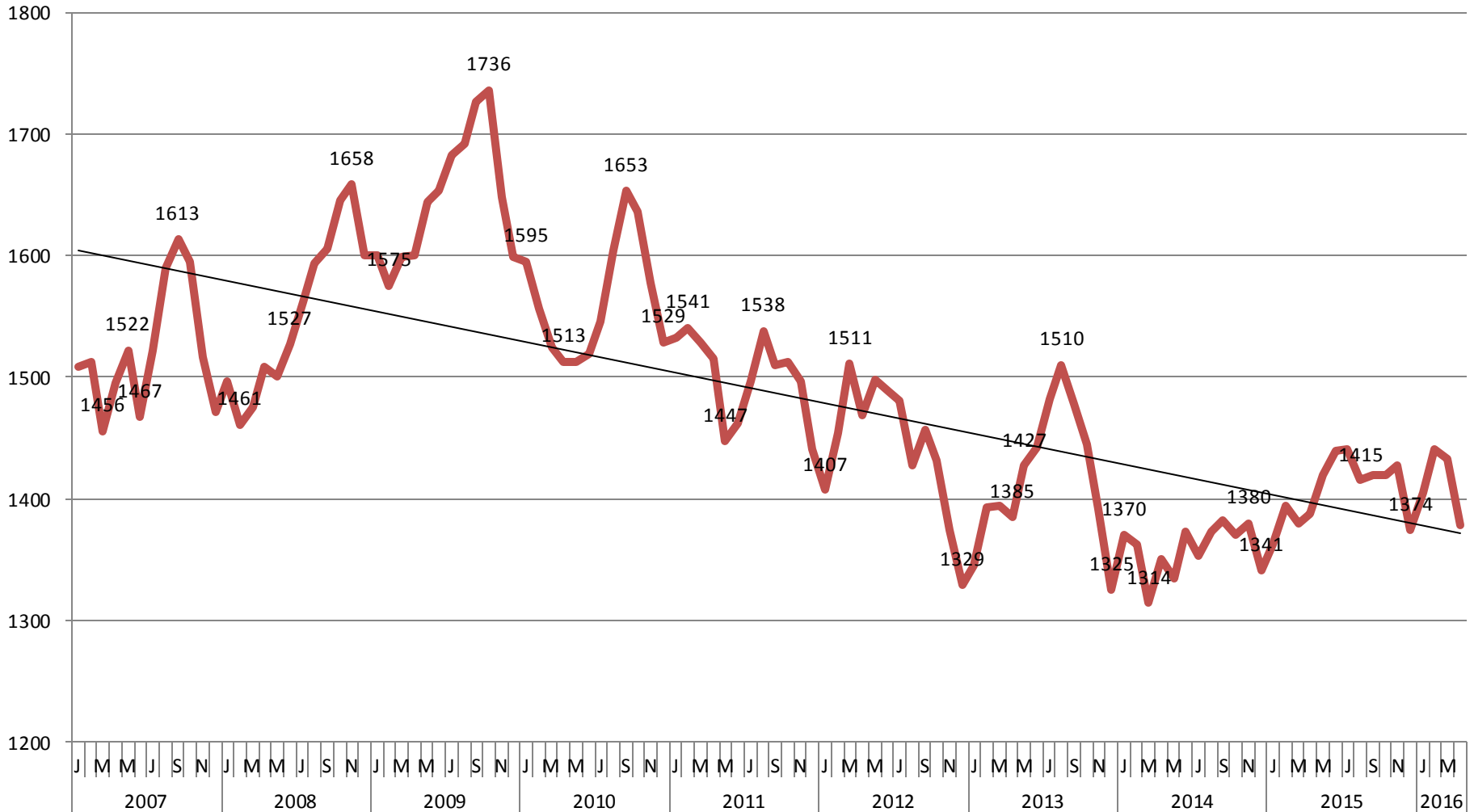
TRENDS: Booking, Detention, Work Release, & Out of County Annual ADP: 2004 - present



TOTAL MONTHLY ADP: JAIL

(Booking, Detention Facility, Work Release, & Out of County)

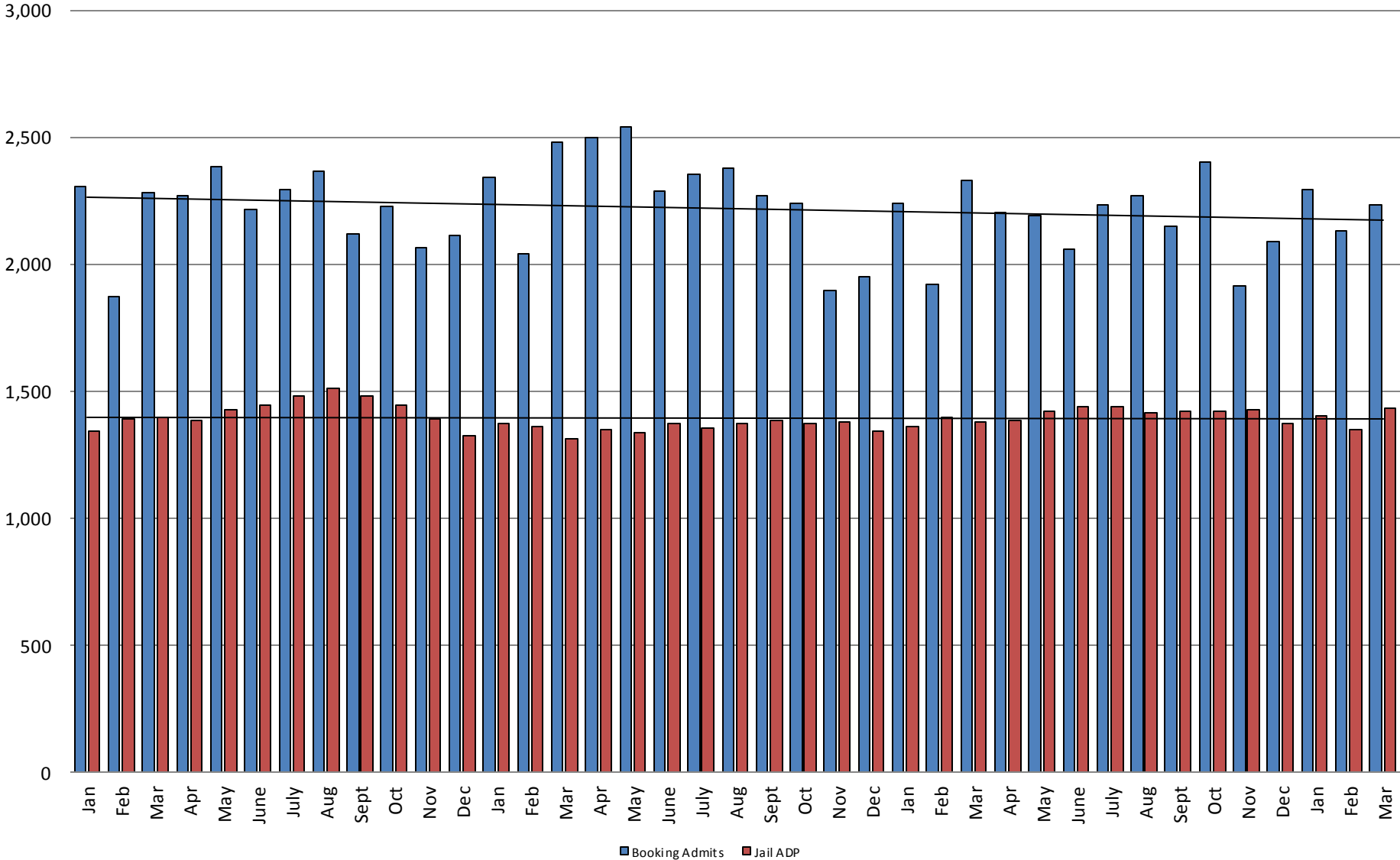
2007 - present



This slide shows total monthly ADP for individuals in booking, detention, work release and out-of county (combined)



Booking Admits & Total Monthly ADP (Jail): 2013 - present

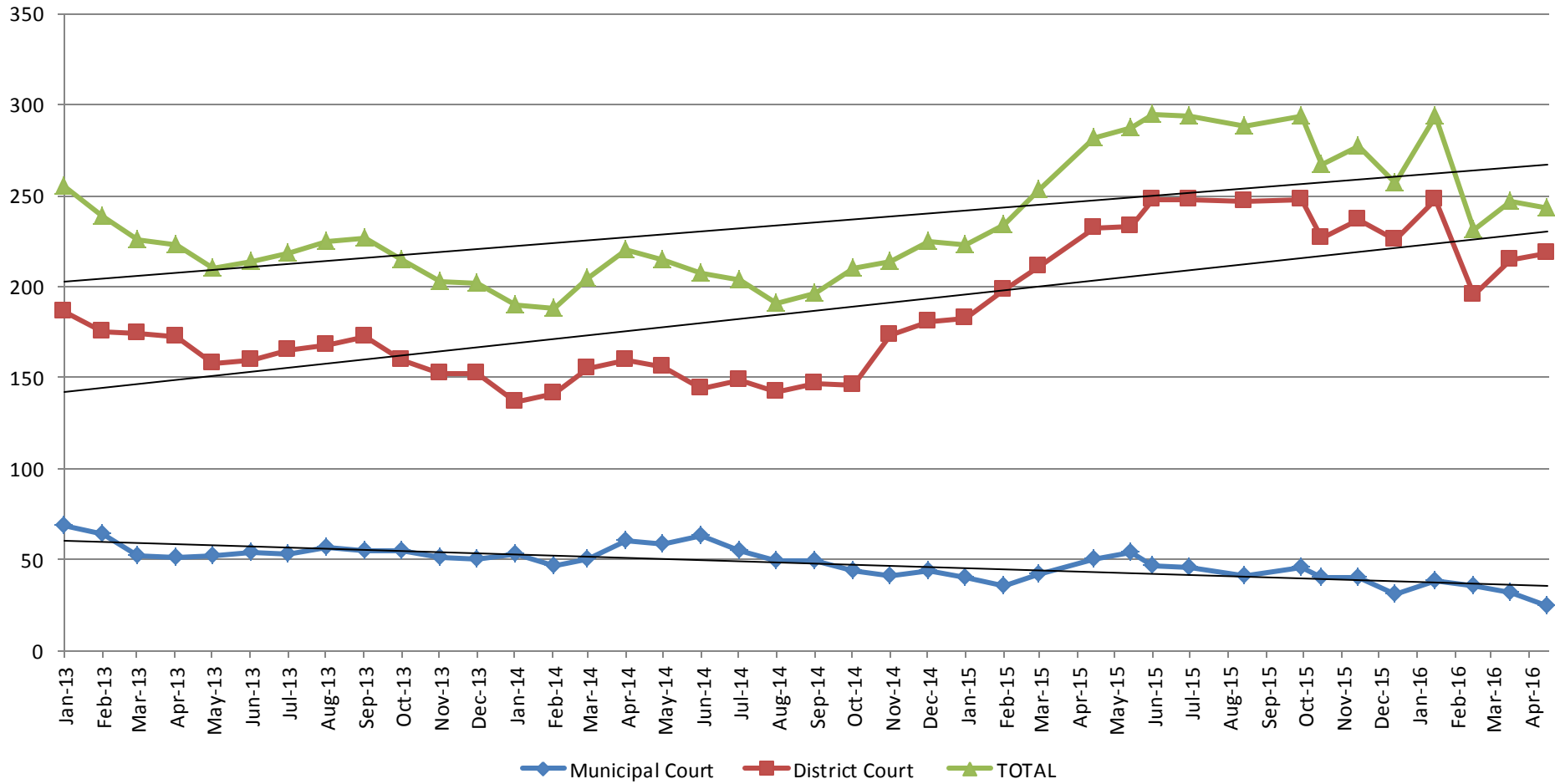


Jail includes individuals in booking, detention, work release and out-of county (combined)

(data obtained from detention facility)



Pretrial Services Program (PSP) Monthly ADP: January 2013 - Present



April	2013	2014	2015	2016
Municipal Court	51	60	50	25
District Court	172	160	232	218
TOTAL	223	220	282	243

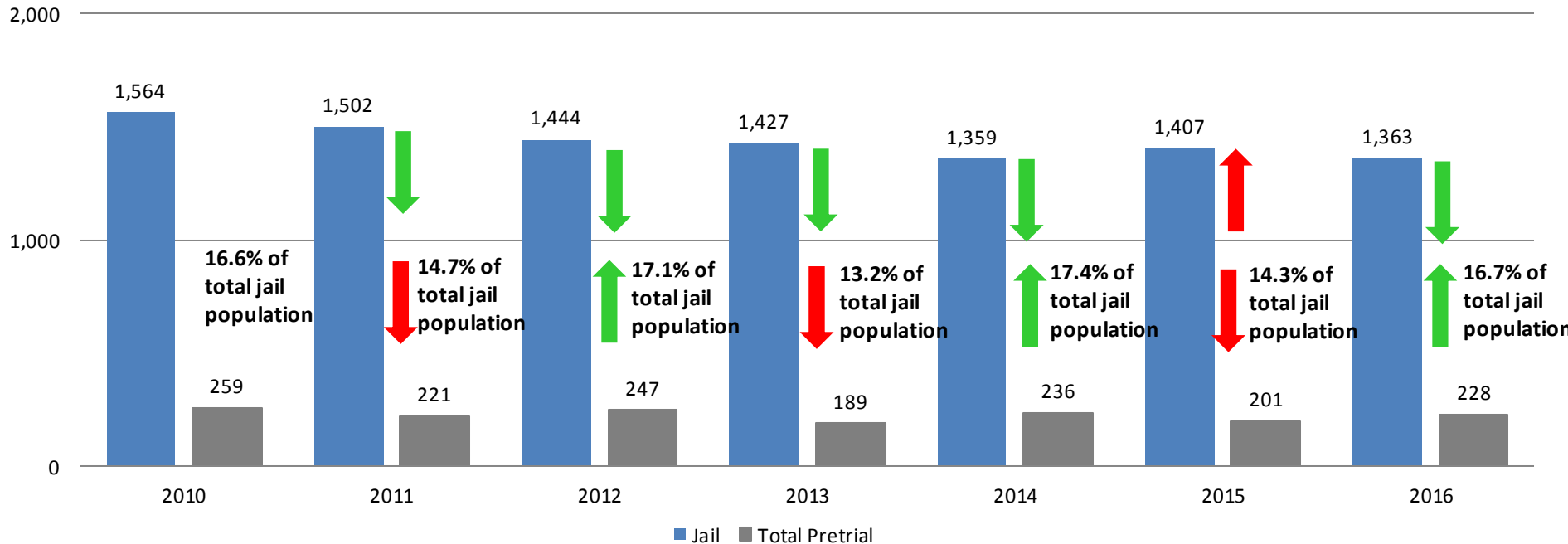
April YTD Avg.	2013	2014	2015	2016
Municipal Court	59	53	42	33
District Court	177	148	206	219
TOTAL	236	201	248	243



(data obtained from Pretrial Services)

Correlation: Total & PSP

Total Annual ADP: 2010 - Present

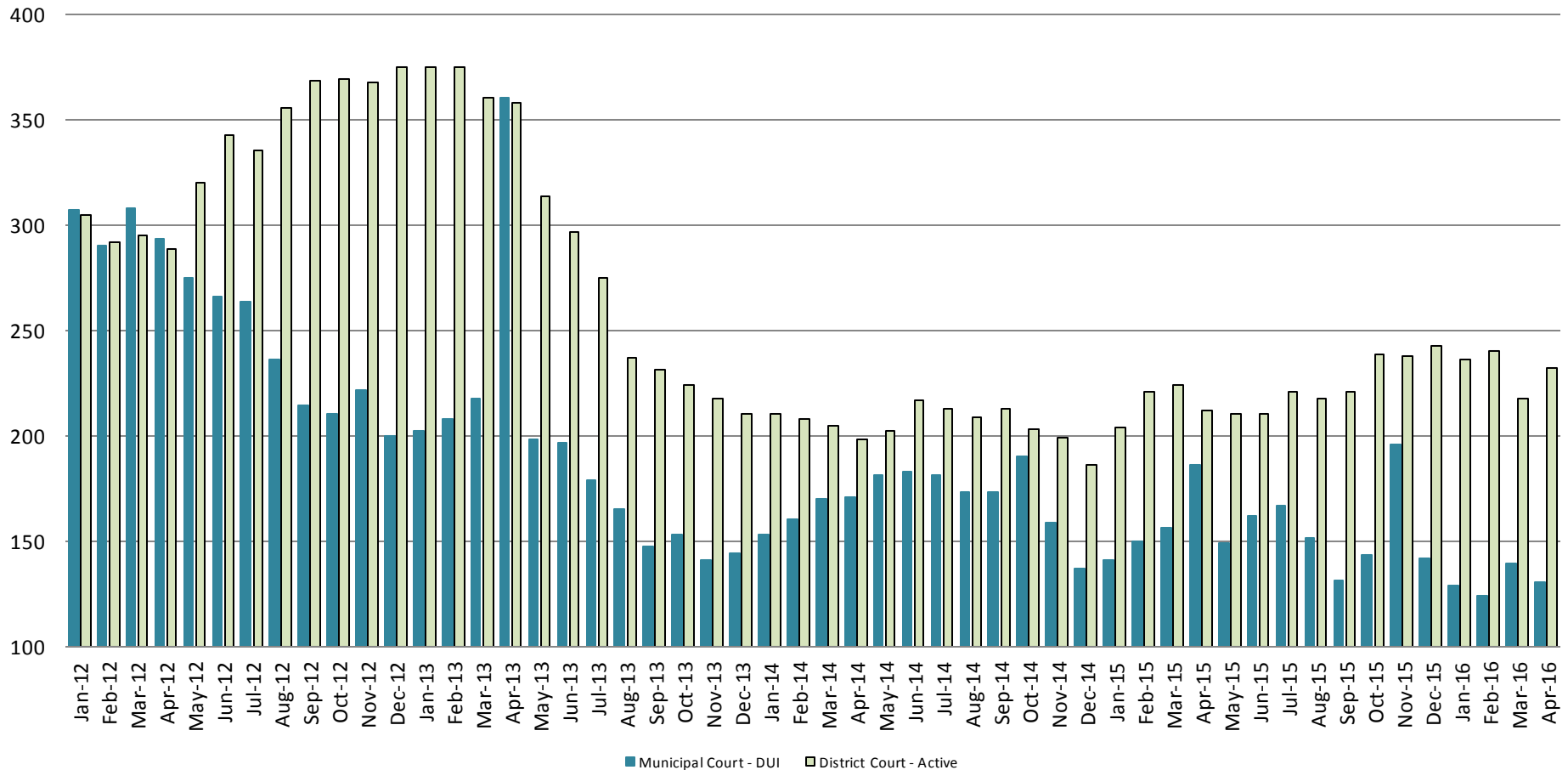


Arrows represent the overall increase/decrease of the population from year to year

Jail includes individuals in booking, detention, work release and out-of county (combined)

Diversion - Active Caseload

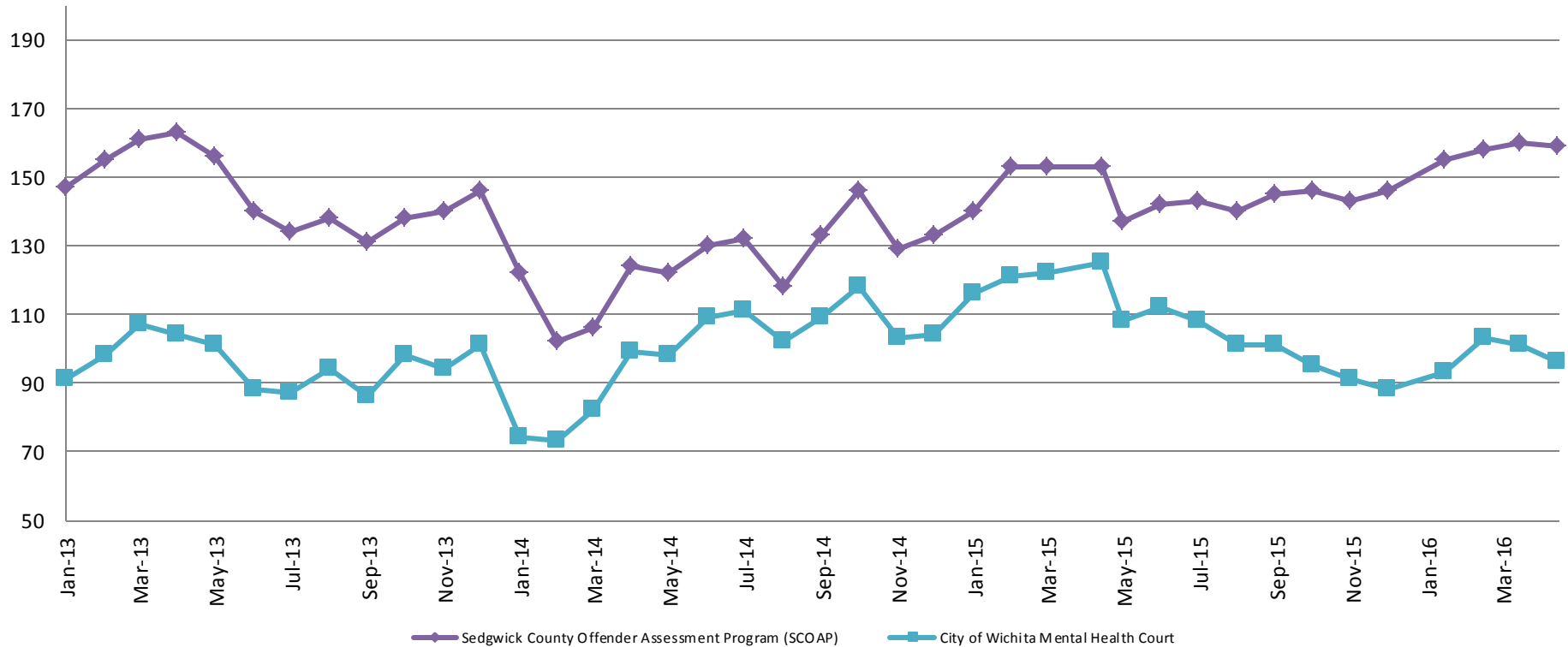
January 2012 - Present



April	2013	2014	2015	2016
Municipal Court- DUI	361	171	186	130
District Court- Active	358	198	212	232

April YTD Avg.	2013	2014	2015	2016
Municipal Court	247	164	158	131
District Court	367	205	215	232

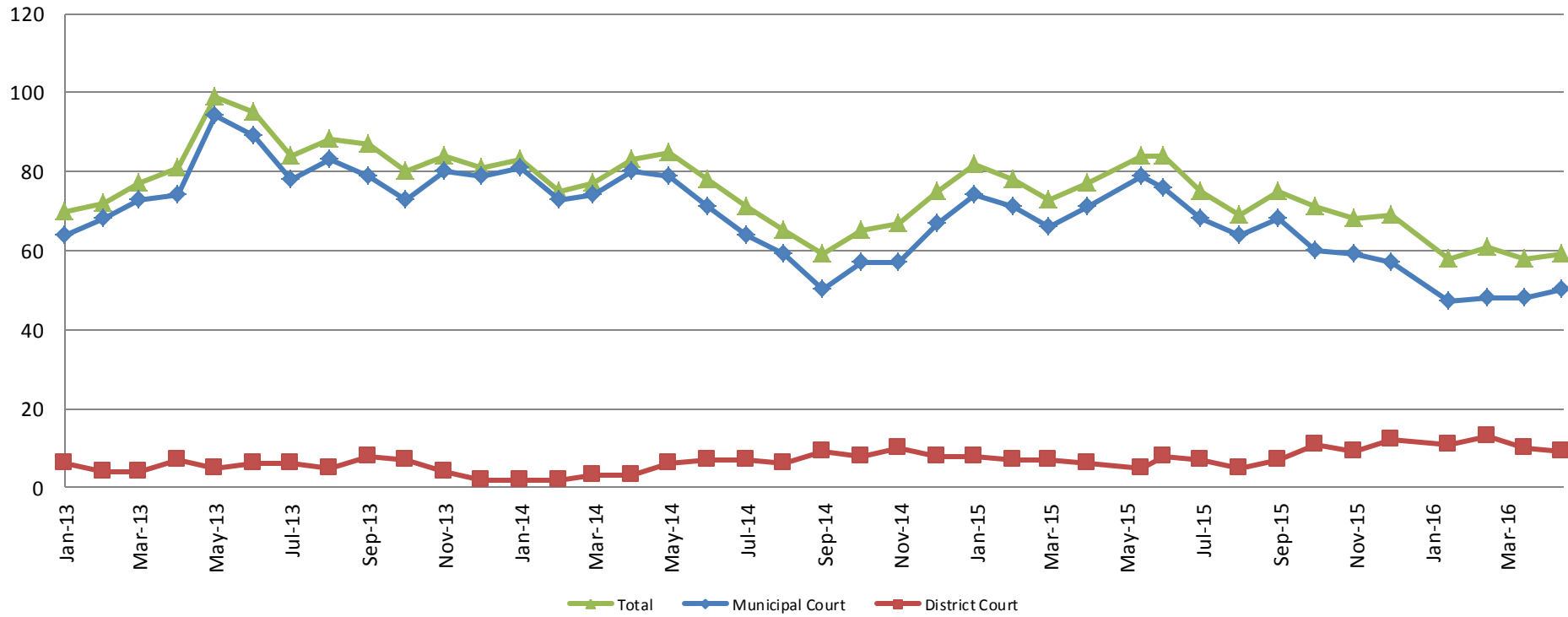
Mental Health - ADP 2013 - present



April:	2013	2014	2015	2016
SCOAP	163	124	153	159
CoW – MH Court	104	99	125	96
April YTD Avg.	2013	2014	2015	2016
SCOAP	157	114	150	158
CoW – MH Court	100	82	121	98

Day Reporting - Active Caseload

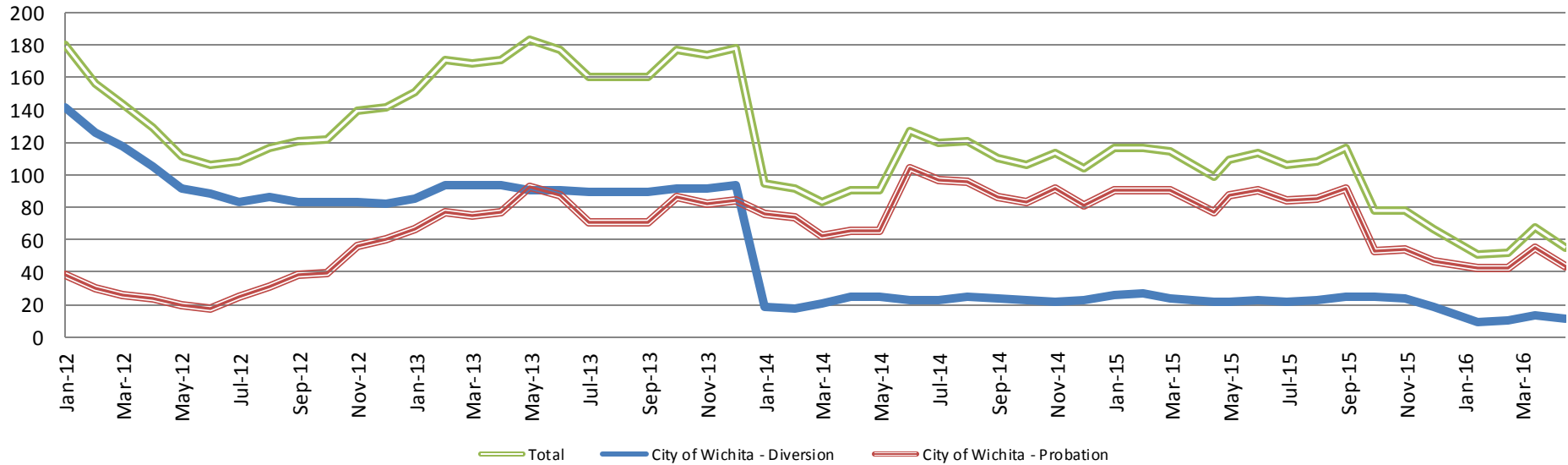
2013-present



April	2013	2014	2015	2016
Municipal Court	74	80	71	50
District Court	7	3	6	9
TOTAL	81	83	77	59
April YTD Avg.	2013	2014	2015	2016
Municipal Court	70	77	71	48
District Court	5	3	7	11
TOTAL	75	80	78	59

Drug Court

Drug Court - City of Wichita ADP: 2012 - present



April - CoW Diversion

2013 = 94
2014 = 25
2015 = 22
2016 = 11

April YTD Avg.

2013 = 92
2014 = 21
2015 = 25
2016 = 11

April - CoW Probation

2013 = 77
2014 = 65
2015 = 77
2016 = 44

April YTD Avg.

2013 = 74
2014 = 69
2015 = 87
2016 = 46

April - CoW Total

2013 = 171
2014 = 90
2015 = 99
2016 = 55

April YTD Avg.

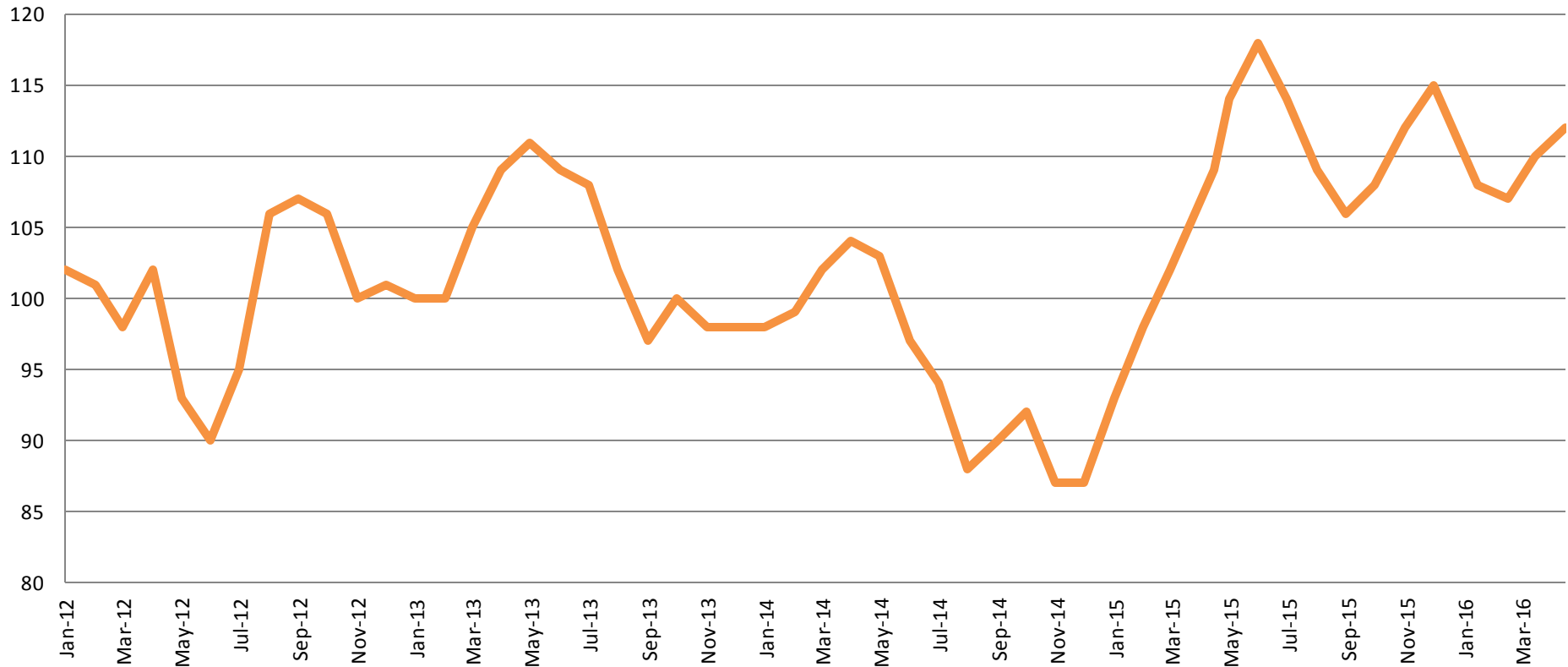
2013 = 166
2014 = 90
2015 = 112
2016 = 57

(data obtained from CoW)



Sedgwick County...
working for you

Drug Court - Sedgwick County ADP: 2012 - present



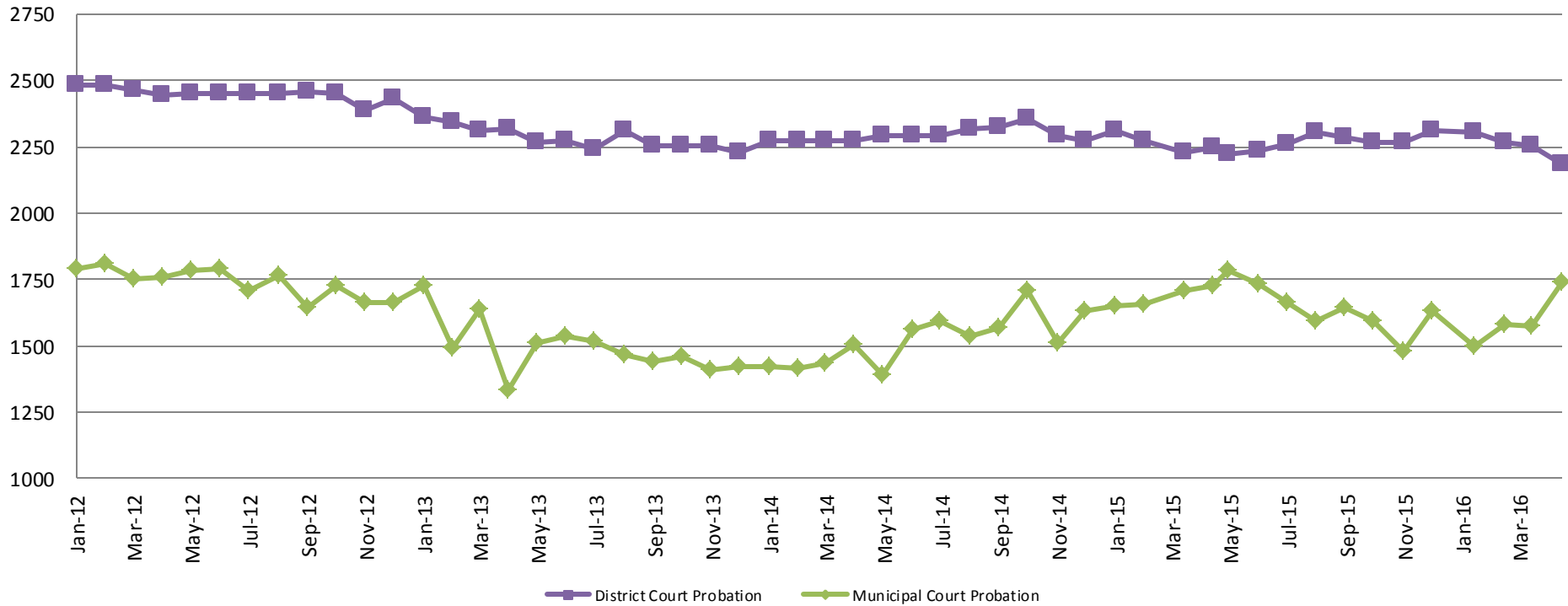
April- SG CO

2013 = 109
2014 = 104
2015 = 109
2016 = 112

April YTD Avg.

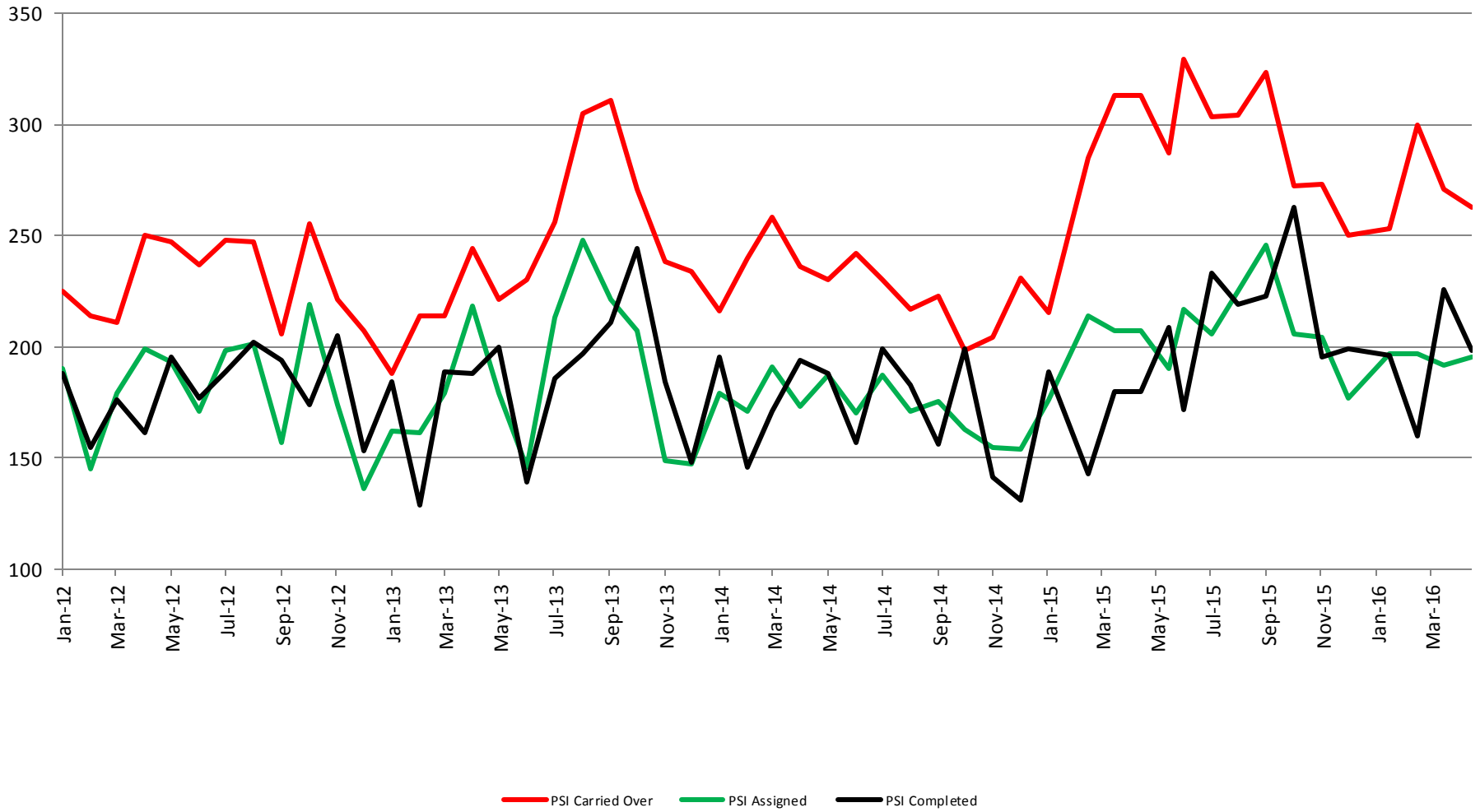
2013 = 104
2014 = 101
2015 = 101
2016 = 109

Probation - Active Caseloads 2012 - present



April:	2013	2014	2015	2016
District Court	2,315	2,276	2,249	2,186
Municipal Court	1,334	1,502	1,726	1,737
April YTD Avg.	2013	2014	2015	2016
District Court	2,333	2,273	2,267	2,252
Municipal Court	1,547	1,443	1,686	1,597

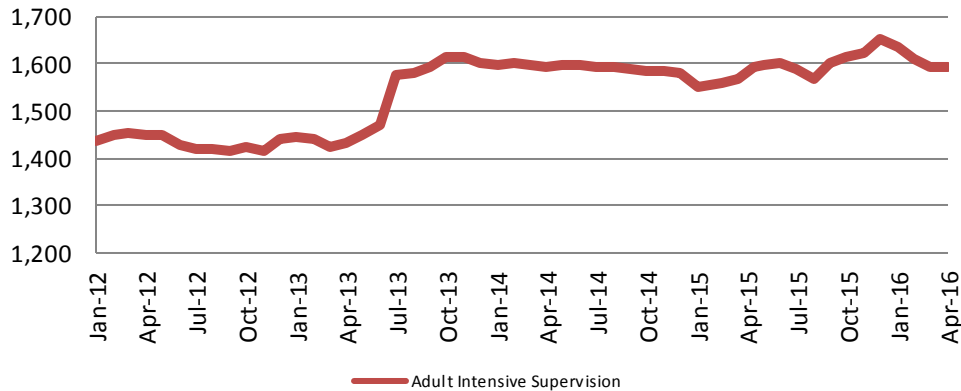
District Court Probation: Pre-Sentence Investigation 2012 - present



(data obtained from District Court)

Community Corrections

Adult Intensive Supervision Probation (AISP) ADP 2012 - present



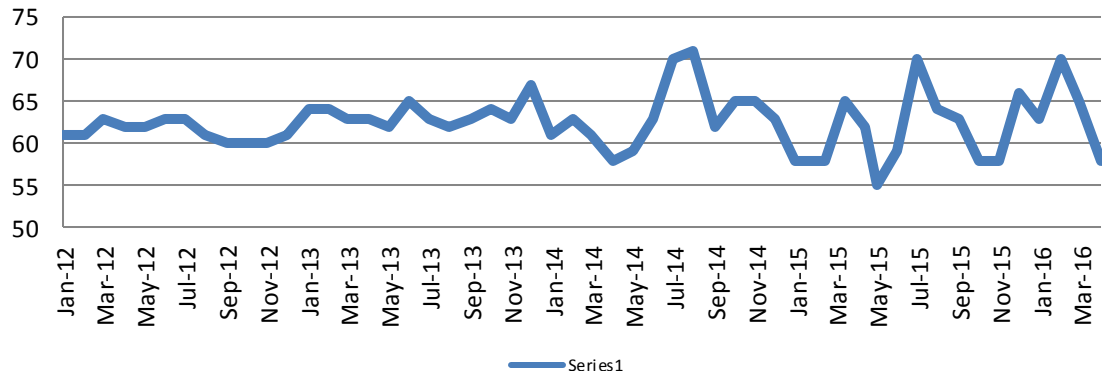
<u>April</u>	<u>April YTD Avg.</u>
2013 = 1,432	2013 = 1,434
2014 = 1,594	2014 = 1,597
2015 = 1,593	2015 = 1,567
2016 = 1,595	2016 = 1,608

(data obtained from SG CO Dept. of Corrections)

*KDOC changed population count to include drug court, residential and AISP beginning July 2013.

Adult Residential: ADP 2012 - present

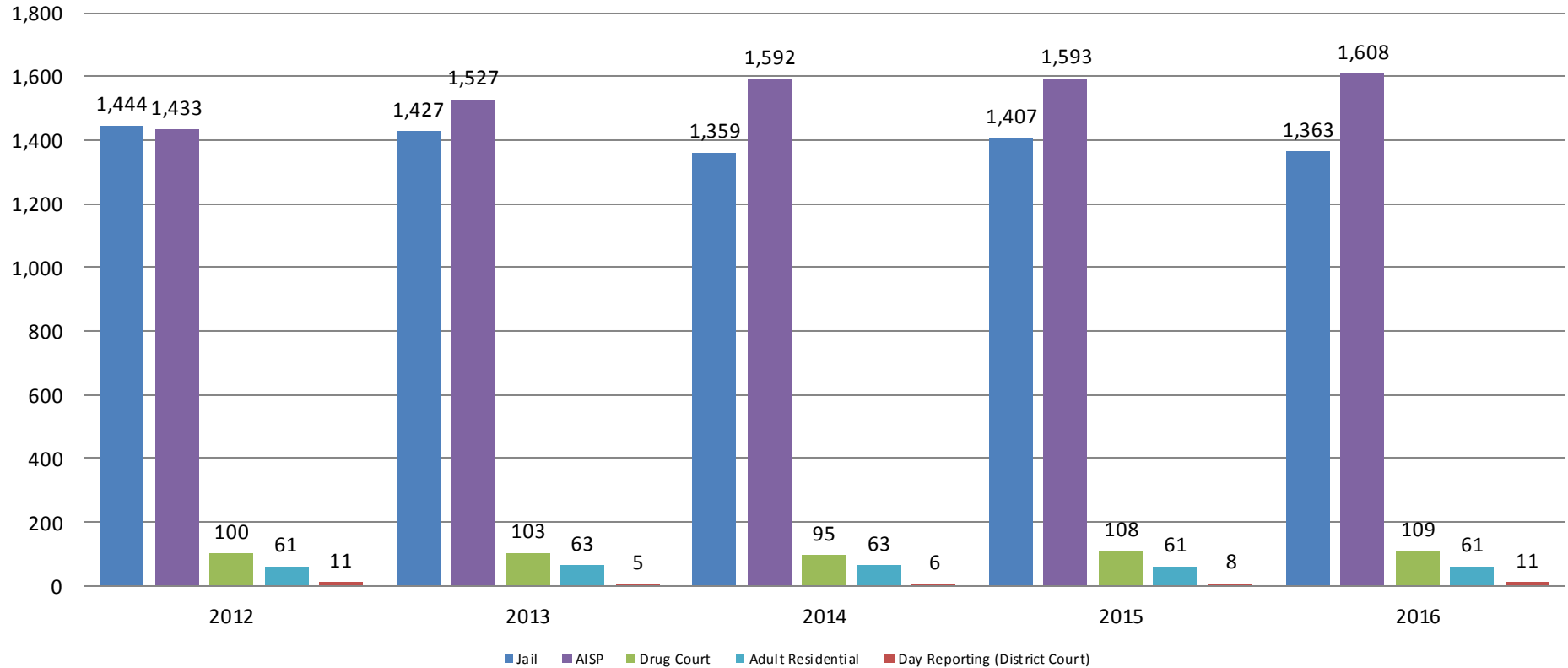
<u>April</u>	<u>April YTD Avg.</u>
2013 = 63	2013 = 64
2014 = 58	2014 = 61
2015 = 62	2015 = 61
2016 = 58	2016 = 64



(data obtained from SG CO Dept. of Corrections)

Correlation: Total & Sedgwick County Programs (Adult)

Total Annual ADP: 2012 - Present

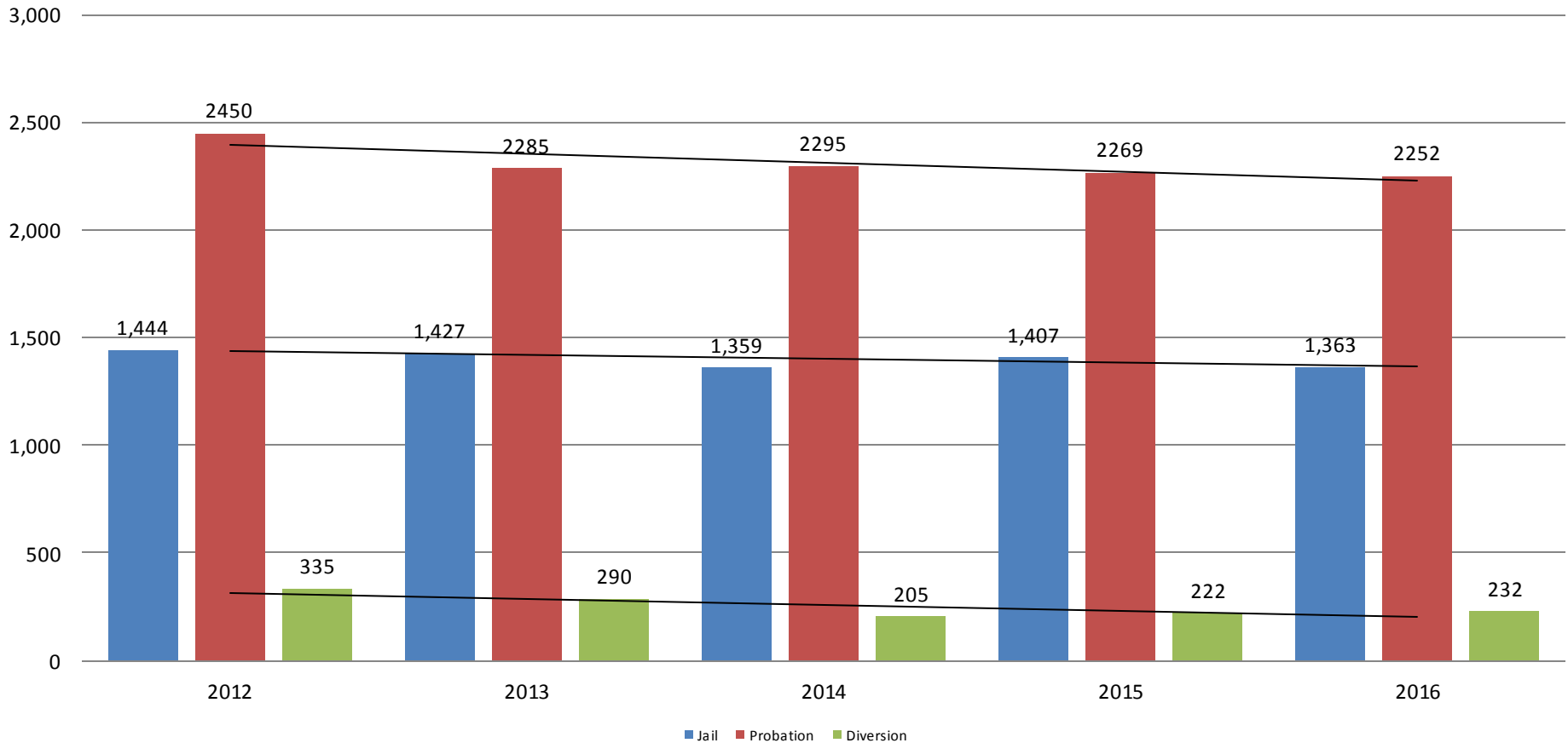


Jail includes individuals in booking, detention, work release and out-of county (combined)



Correlation: Total & District Court Programs

Total Annual ADP: 2012 - Present

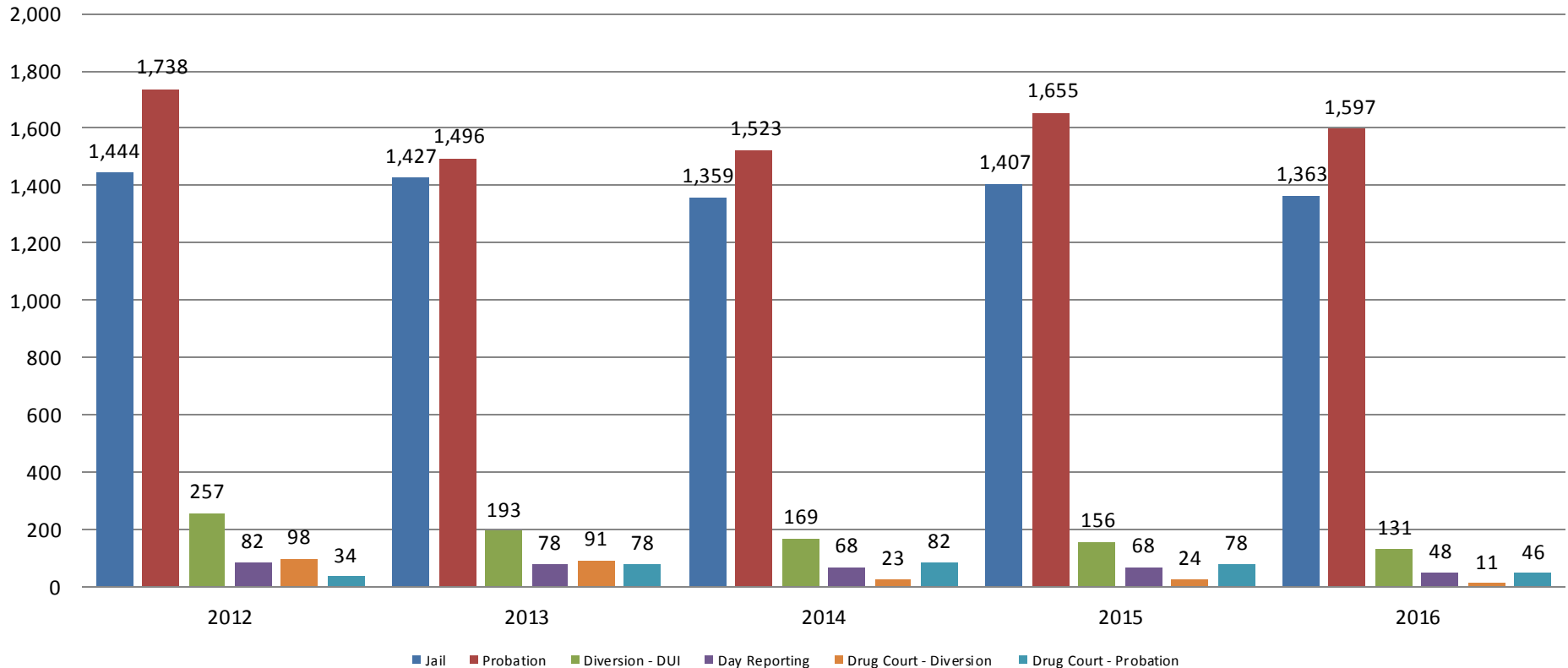


Jail includes individuals in booking, detention, work release and out-of county (combined)



Correlation: Total & City of Wichita / Municipal Court Programs

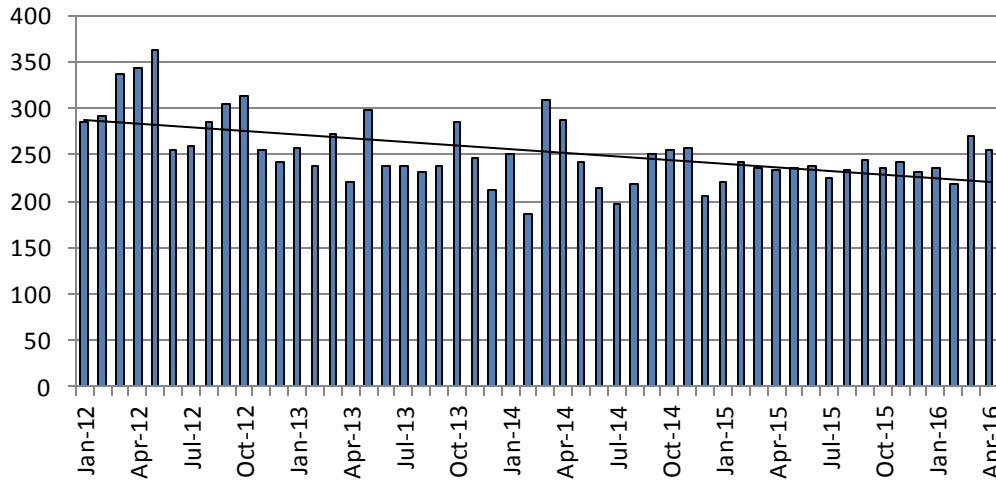
Total Annual ADP: 2012 - present



Jail includes individuals in booking, detention, work release and out-of county (combined)

Juvenile

JIAC Intakes: 2012 - present

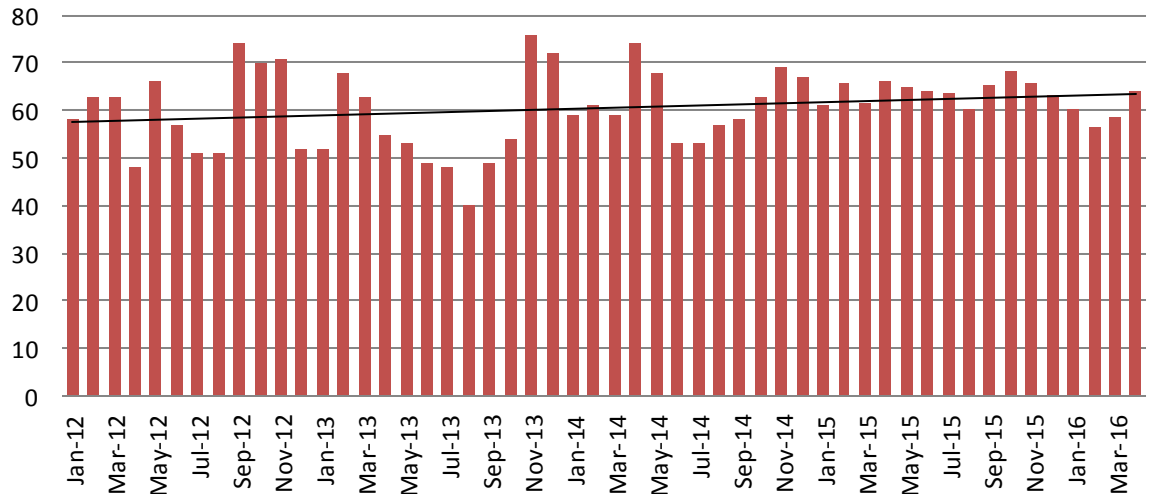


April	April YTD Average
2013 = 221	2013 = 256
2014 = 309	2014 = 249
2015 = 236	2015 = 233
2016 = 254	2016 = 245

(data obtained from SG CO Dept. of Corrections)

JDF ADP: 2012 - present

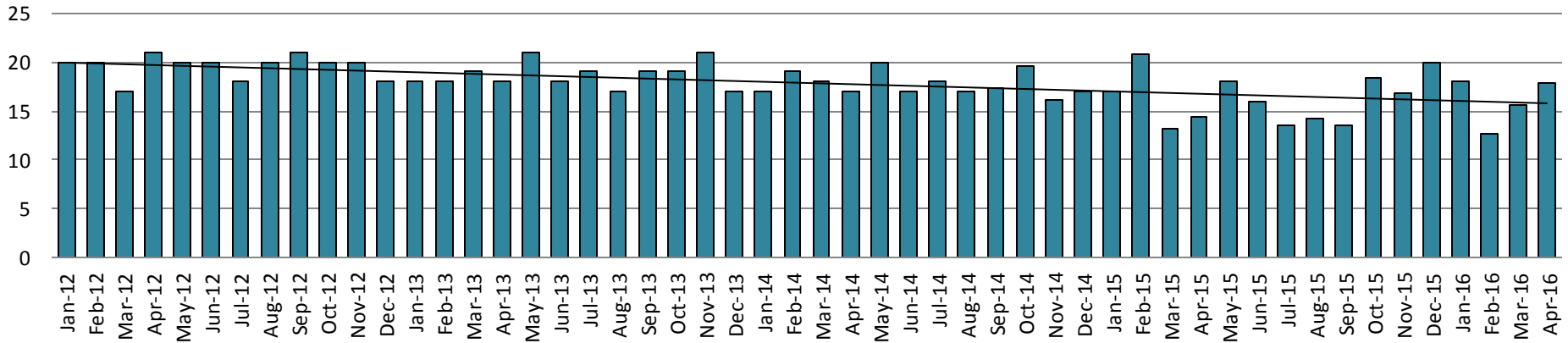
April	April YTD Avg.
2013 = 55	2013 = 60
2014 = 74	2014 = 63
2015 = 66	2015 = 64
2016 = 64	2016 = 60



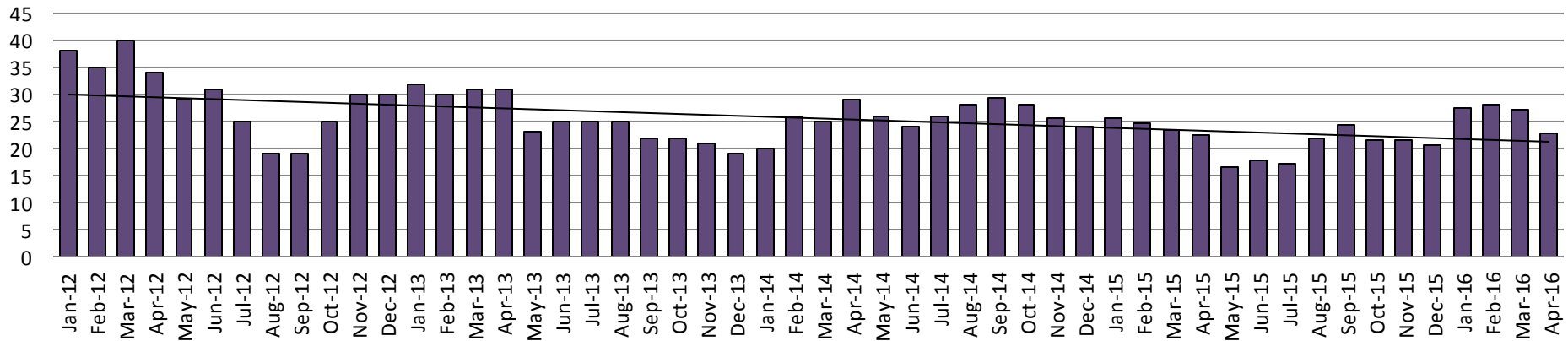
(data obtained from SG CO Dept. of Corrections)

Juvenile Detention Alternatives

Juvenile Residential Facility (JRF) ADP: 2012 - present

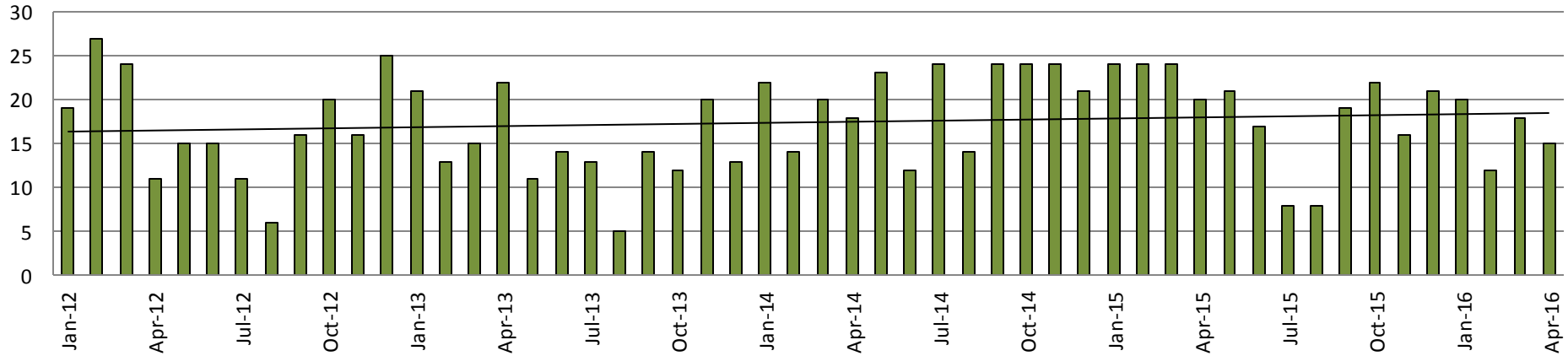


Home-Based Supervision ADP: 2012 - present

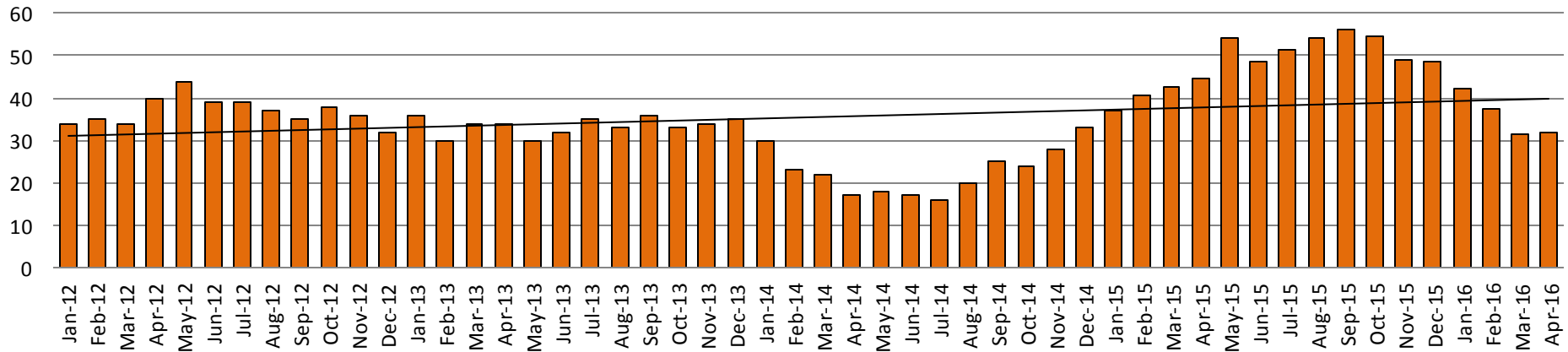


Juvenile Detention Alternatives

Weekend Alternative Detention Program 2012 - present



Detention Advocacy Case Management Services ADP: 2012 - present



Juvenile Detention Services

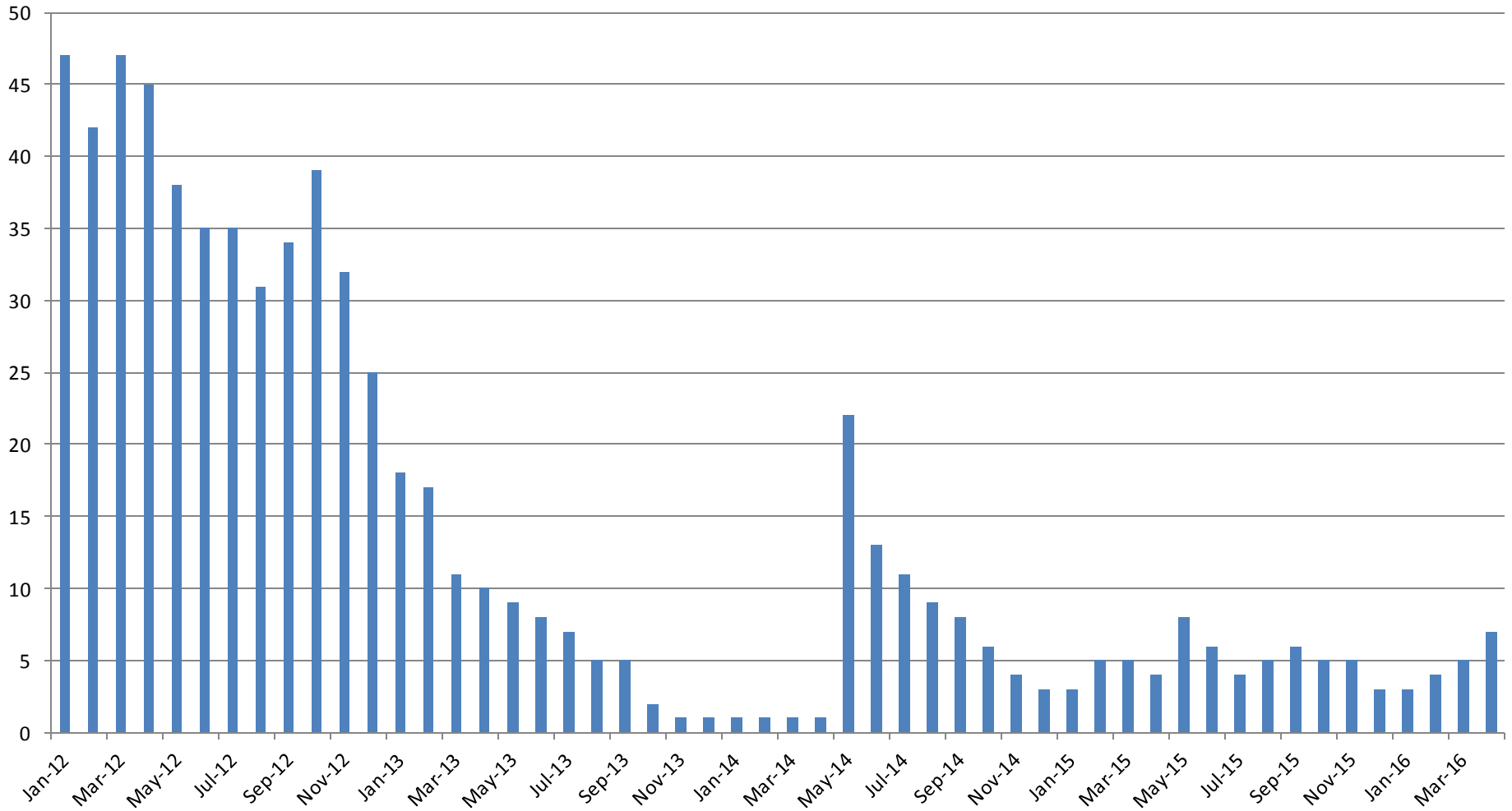
April ADP	2013	2014	2015	2016
Juvenile Detention Facility	55	74	66	64
Juvenile Residential Facility	18	17	14	18
Home Based Supervision	31	29	22	23
Detention Advocacy Case Management Services	34	17	45	32
Weekend Alternative Detention Program (total)	22	18	20	15

April YTD AVERAGE	2013	2014	2015	2016
Juvenile Detention Facility	60	63	64	60
Juvenile Residential Facility	18	18	16	16
Home Based Supervision	31	25	24	26
Detention Advocacy Case Management Services	34	23	41	36
Weekend Alternative Detention Program	18	19	23	16



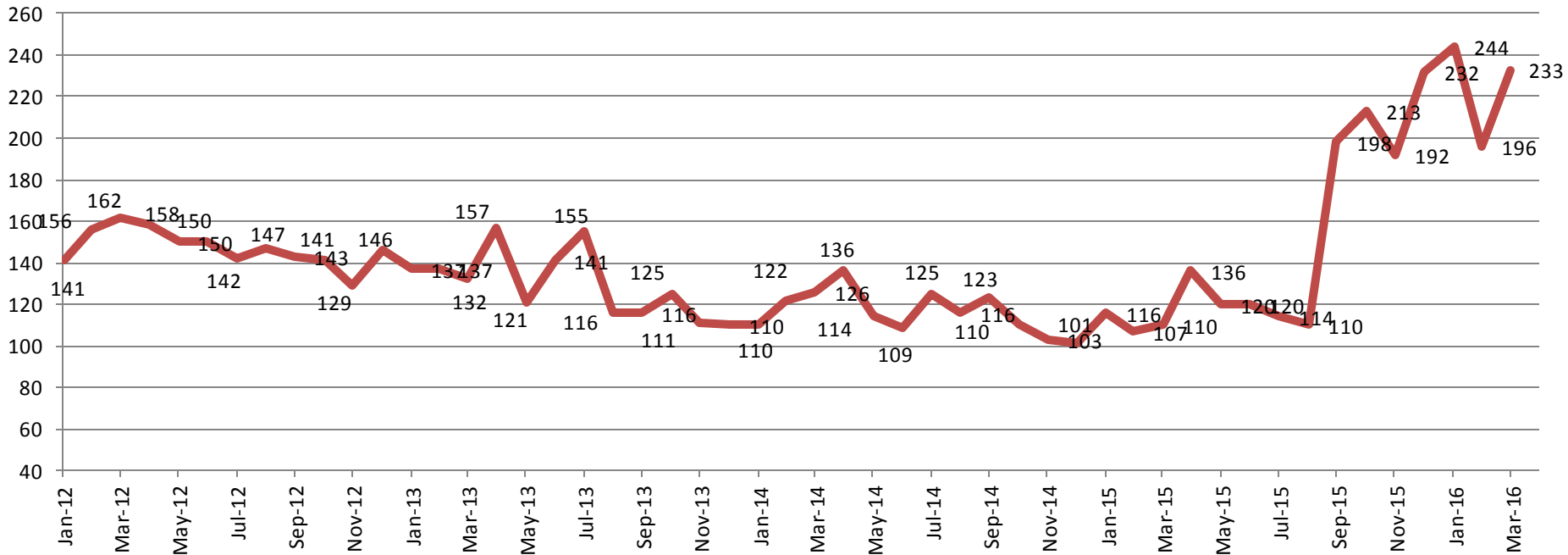
Monthly Jail Snapshot: March 31, 2015

BICE Holds 2012-Present



Monthly Jail Snapshot: March 31, 2015

Felony Commitments: February 2012 - present



April:

2012 = 162

2013 = 132

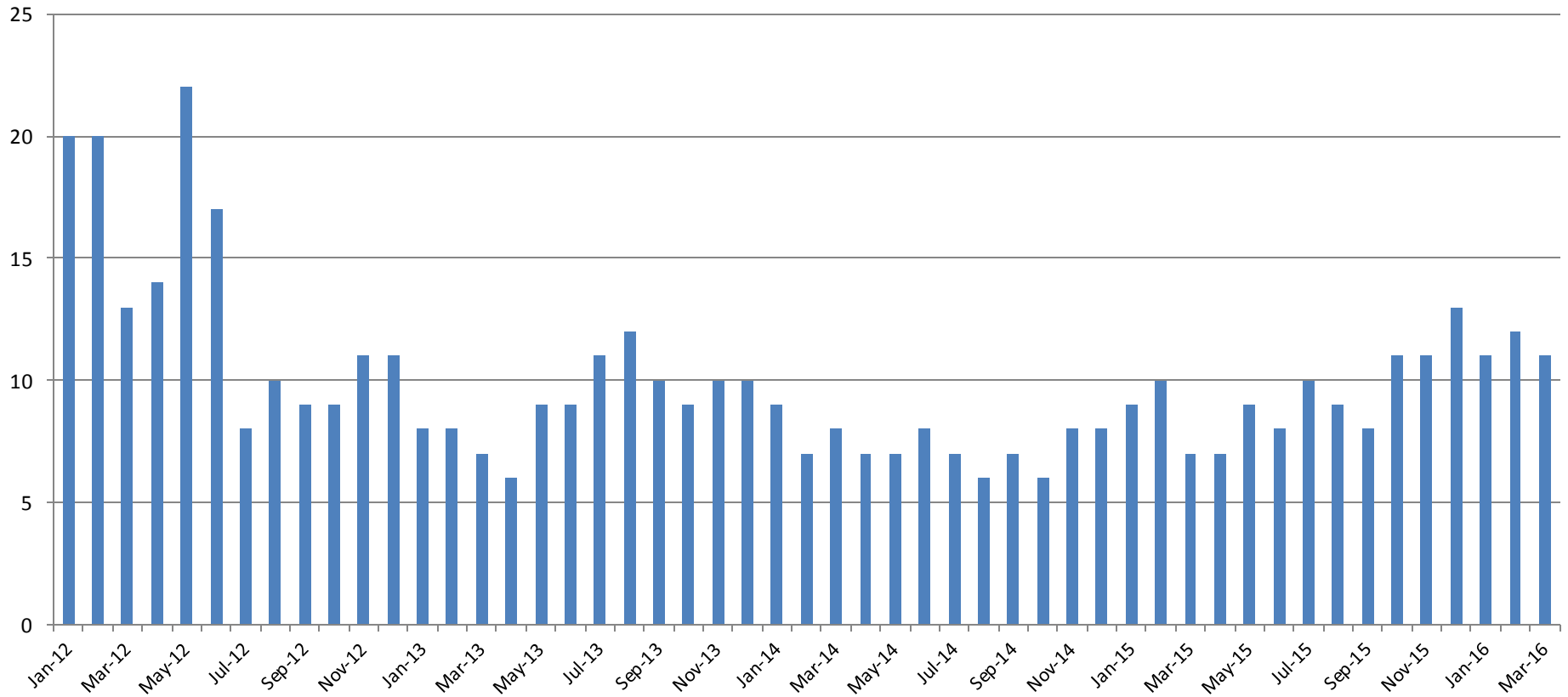
2014 = 126

2015 = 110

2016 = 233

(data obtained from SG CO DIO)

Journal Entry Completion (Average Days) January 2013-Present



This data is always reported a month behind

