

Criminal Justice Coordinating Council

Population Report & Program Trends

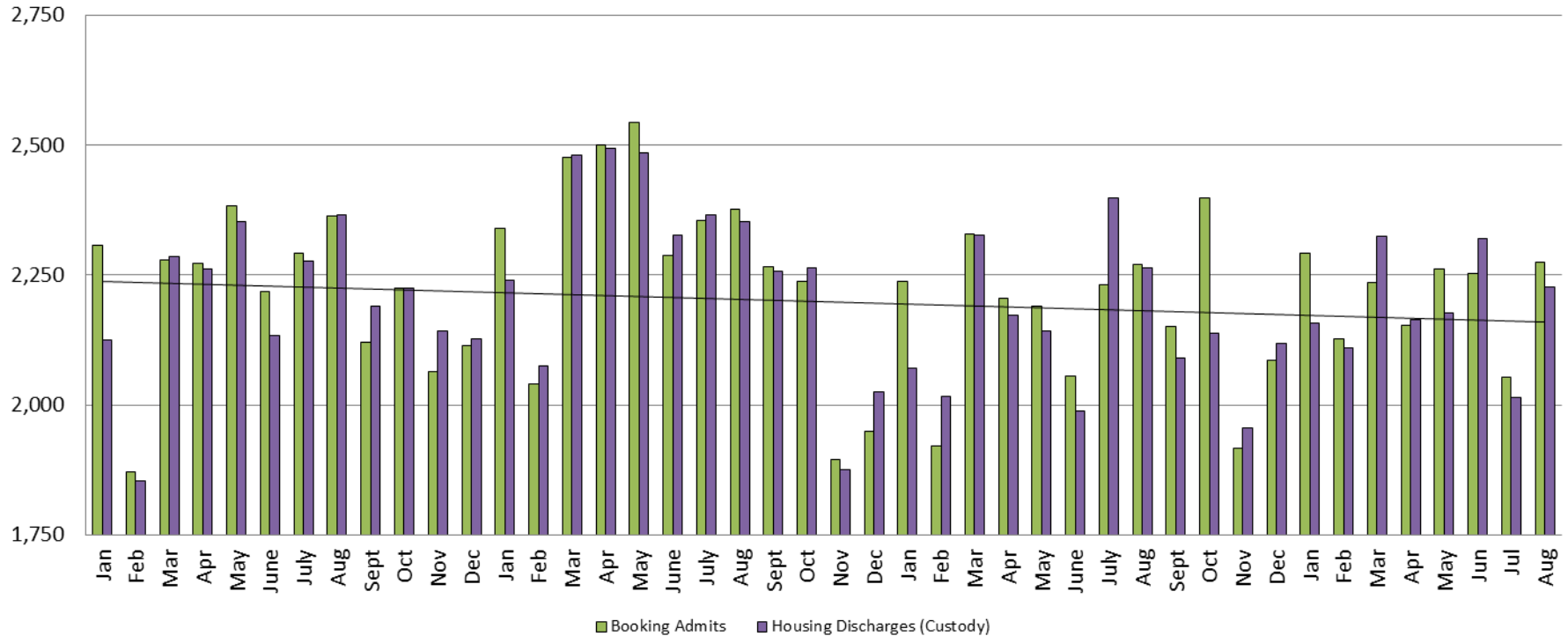
September 2016



Sedgwick County...
working for you

Detention Facility

Booking Admits & Housing Discharges from Custody January 2013 - Present



Housing Discharges for August

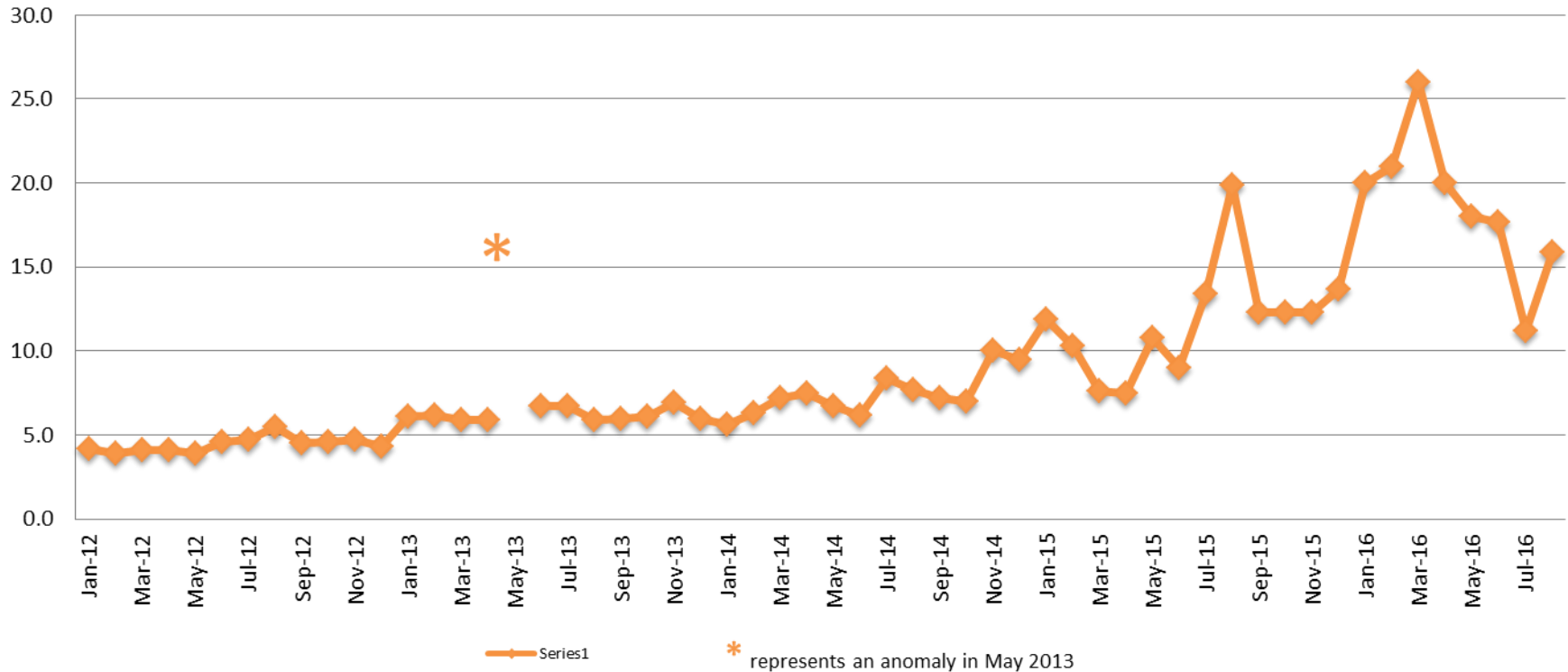
2014 = 2,352
 2015 = 2,264
 2016 = 2,227

Bookings for August

2014 = 2,377
 2015 = 2,270
 2016 = 2,274



Average Length of Stay: Booking (Hours) January 2012 - Present



August

2012 = 5.5
 2013 = 5.9
 2014 = 7.7
 2015 = 19.9
 2016 = 15.9

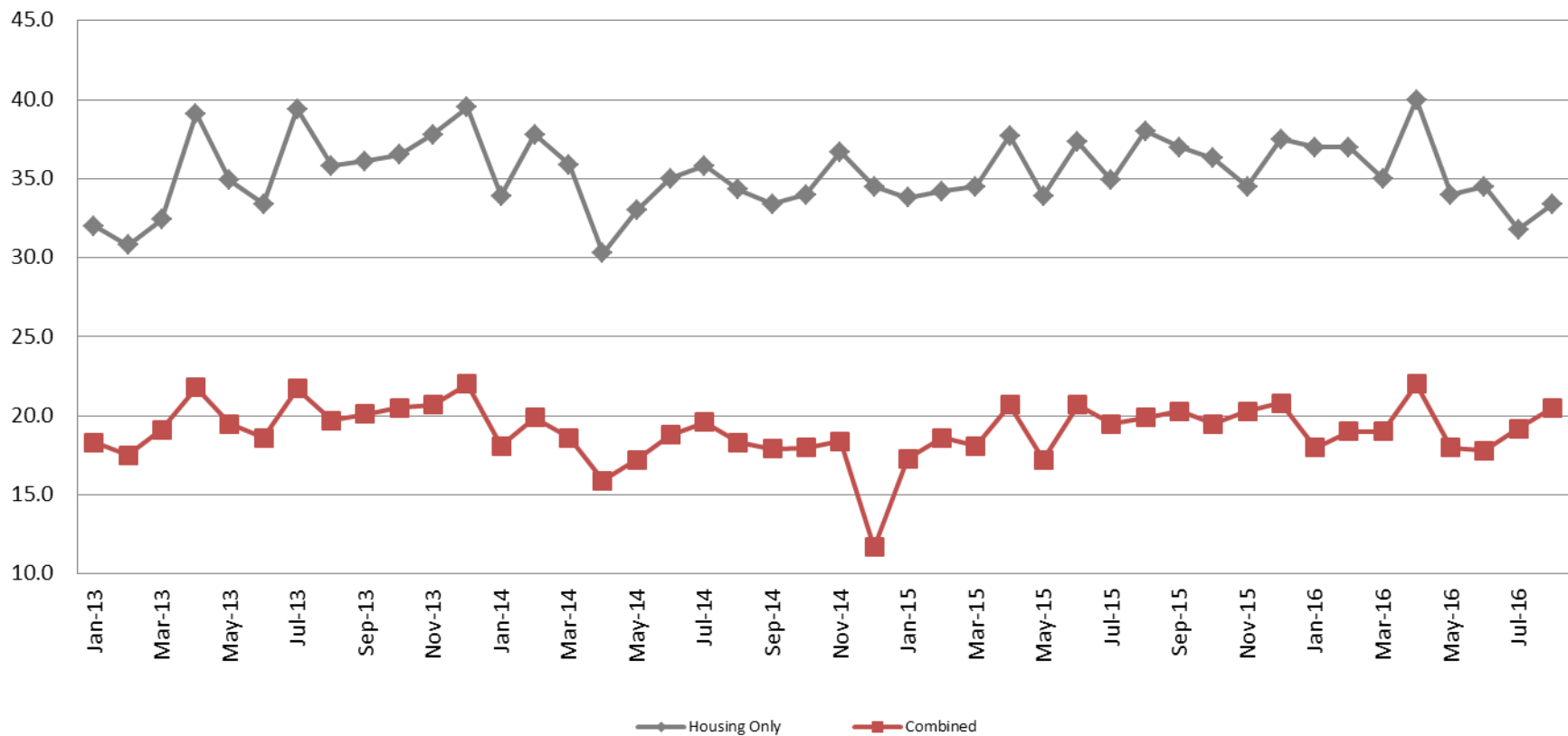
August YTD Avg.

2012 = 4.4
 2013 = 7.5
 2014 = 7.0
 2015 = 11.3
 2016 = 18.7

(data obtained from detention facility)

Average Length of Stay: Housing & Combined (Days)

January 2013 - Present



August Housing

2013 = 35.8
 2014 = 34.3
 2015 = 38.0
 2016 = 33.4

August Housing YTD Avg.

2013 = 34.7
 2014 = 34.5
 2015 = 35.5
 2016 = 35.3

August Combined

2013 = 19.7
 2014 = 18.3
 2015 = 19.9
 2016 = 20.5

August Combined YTD Avg.

2013 = 19.5
 2014 = 18.3
 2015 = 19.0
 2016 = 19.2

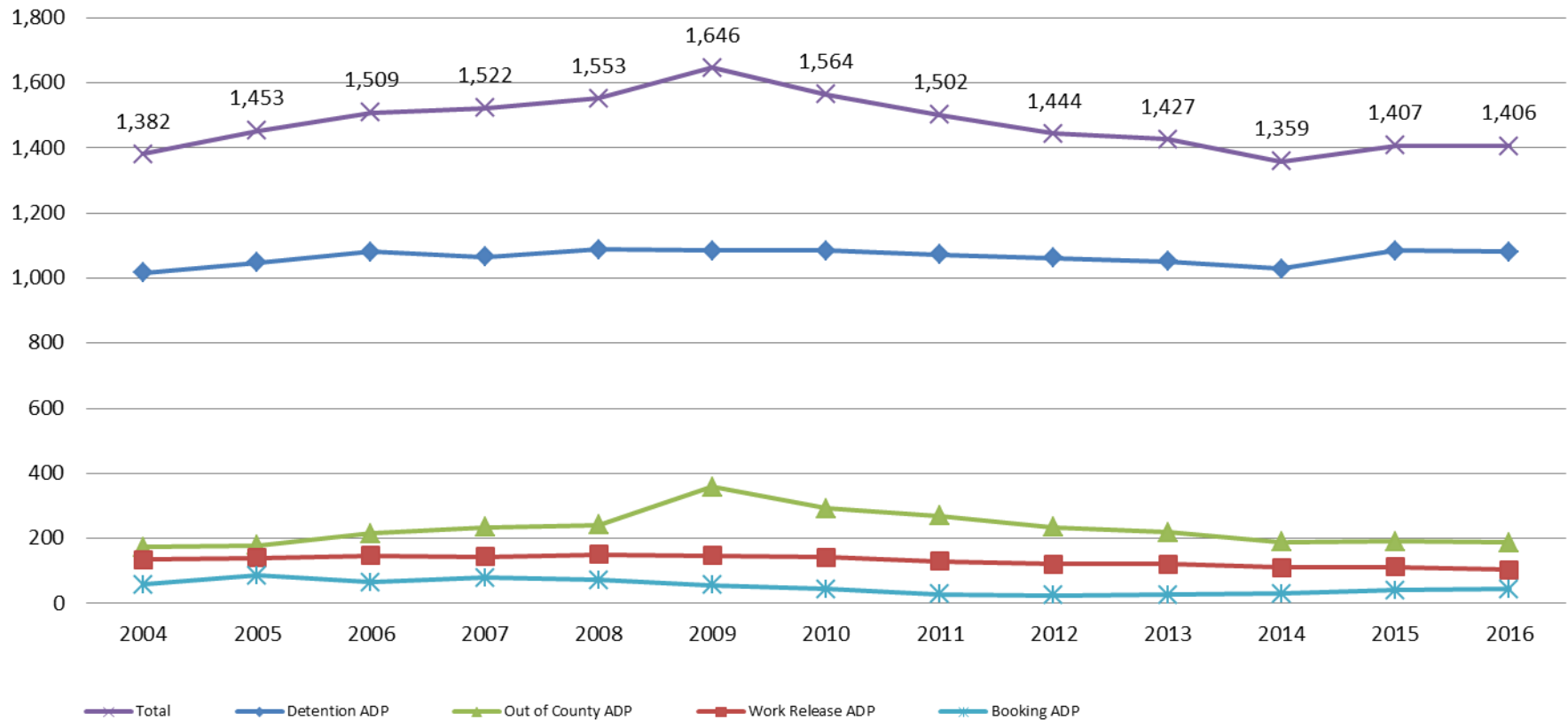


Sedgwick County...
 working for you

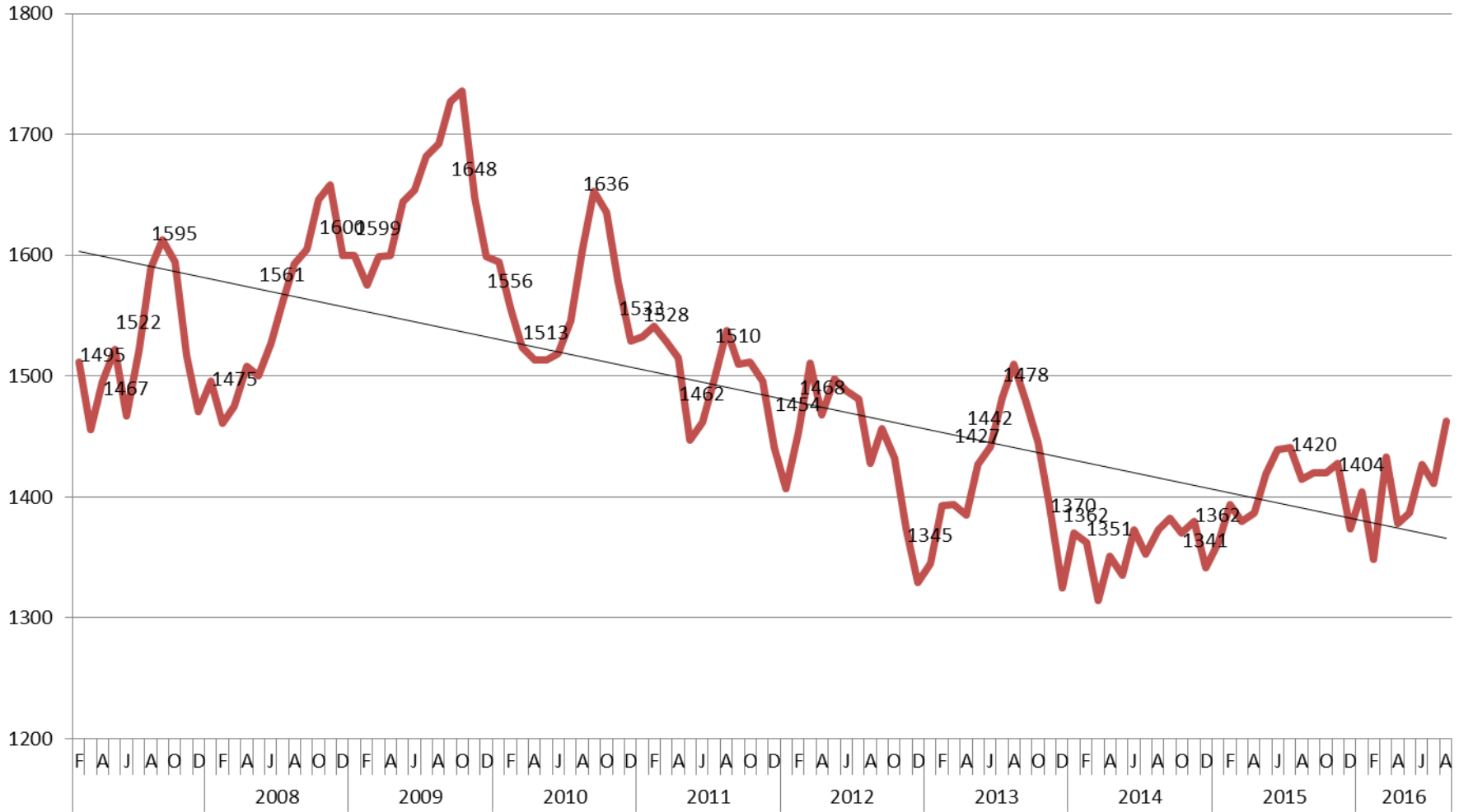
(data obtained from detention facility)

Jail: Annual Average Daily Population (ADP)

TRENDS: Booking, Detention, Work Release, & Out of County Annual ADP: 2004 - present



TOTAL MONTHLY ADP: JAIL (Booking, Detention Facility, Work Release, & Out of County) 2007 - present

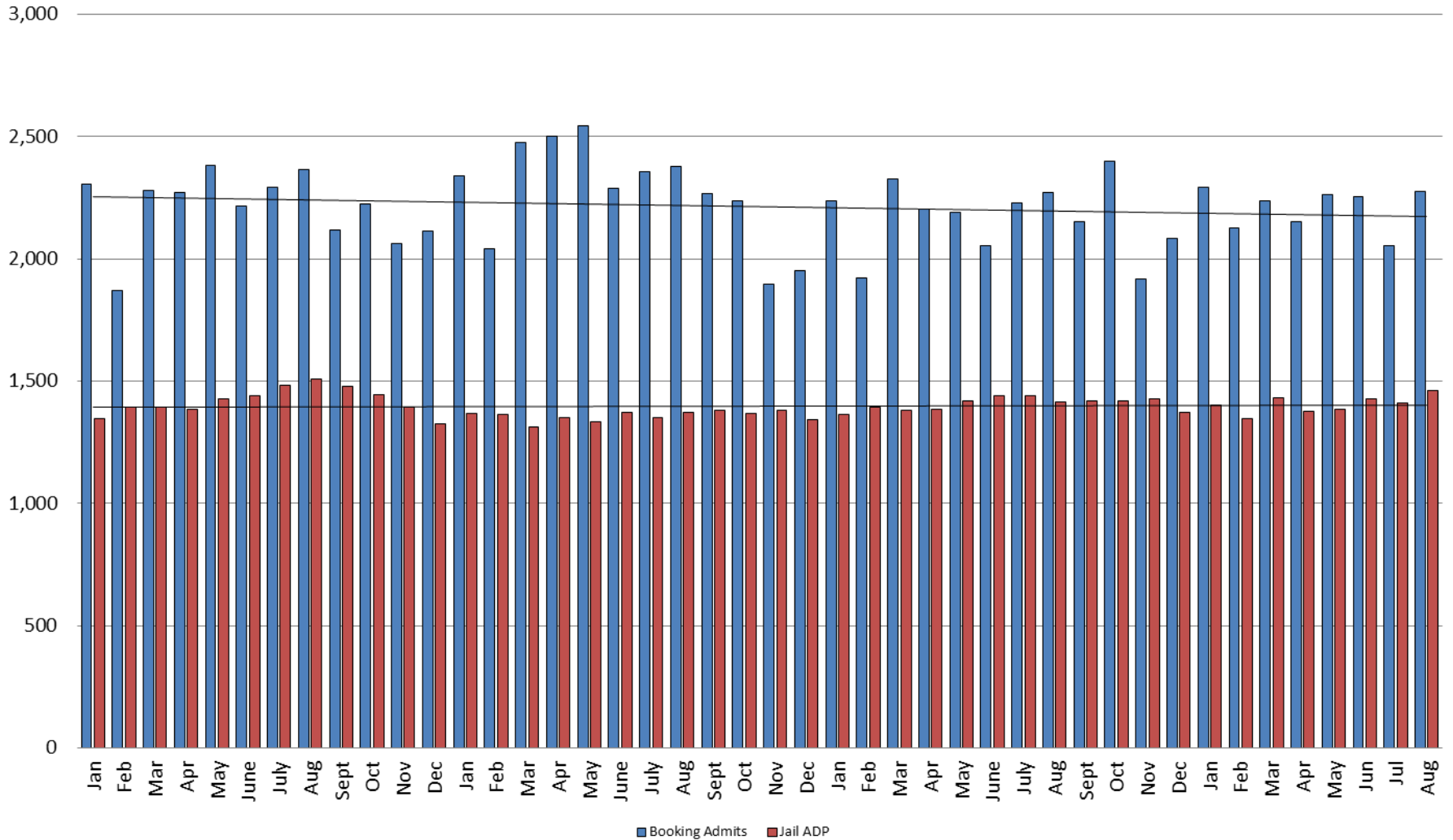


This slide shows total monthly ADP for individuals in booking, detention, work release and out-of county (combined)

(data obtained from detention facility)



Booking Admits & Total Monthly ADP (Jail): 2013 - present



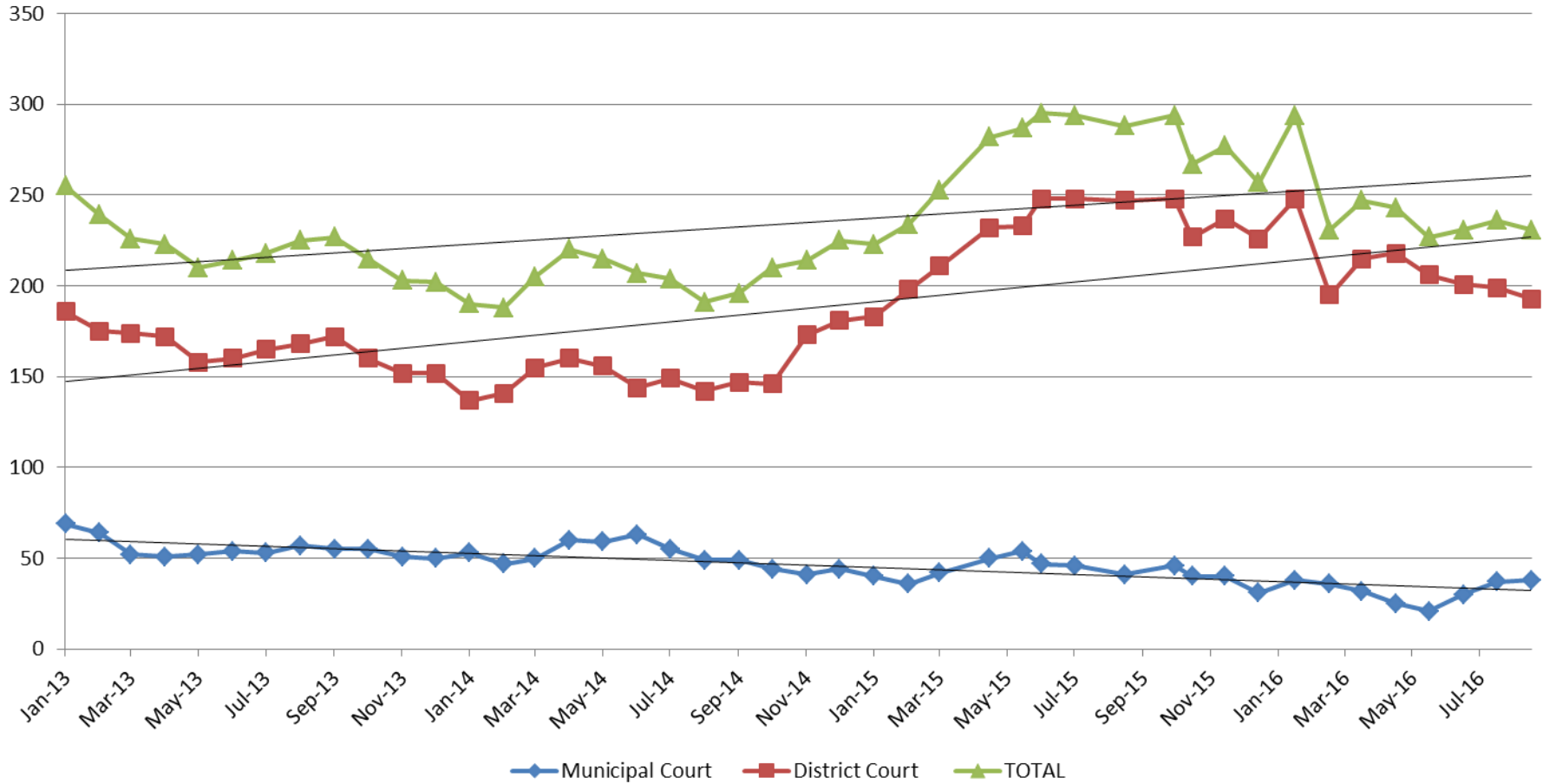
Jail includes individuals in booking, detention, work release and out-of county (combined)

(data obtained from detention facility)



Sedgwick County...
working for you

Pretrial Services Program (PSP) Monthly ADP: January 2013 - Present



August	2013	2014	2015	2016
Municipal Court	57	49	41	38
District Court	168	142	247	193
TOTAL	225	191	288	231

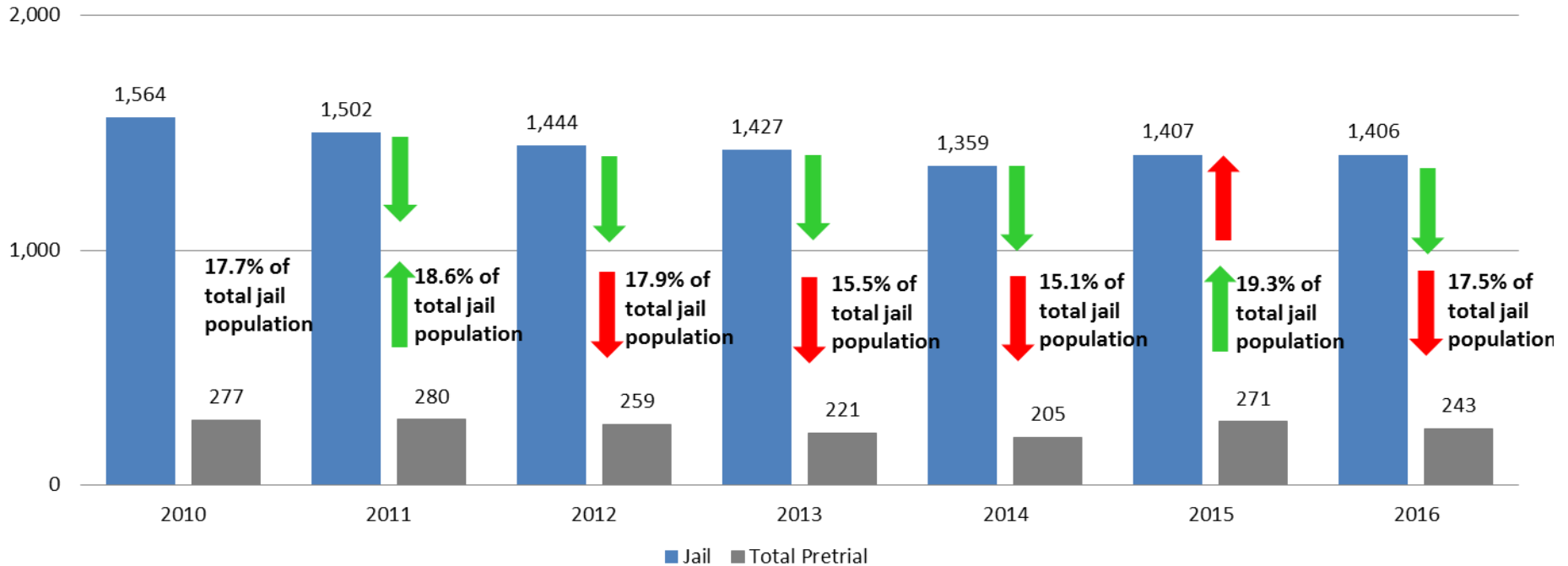
August YTD Avg.	2013	2014	2015	2016
Municipal Court	57	55	45	32
District Court	170	148	225	209
TOTAL	226	203	270	243



(data obtained from Pretrial Services)

Correlation: Total & PSP

Total Annual ADP: 2010 - Present



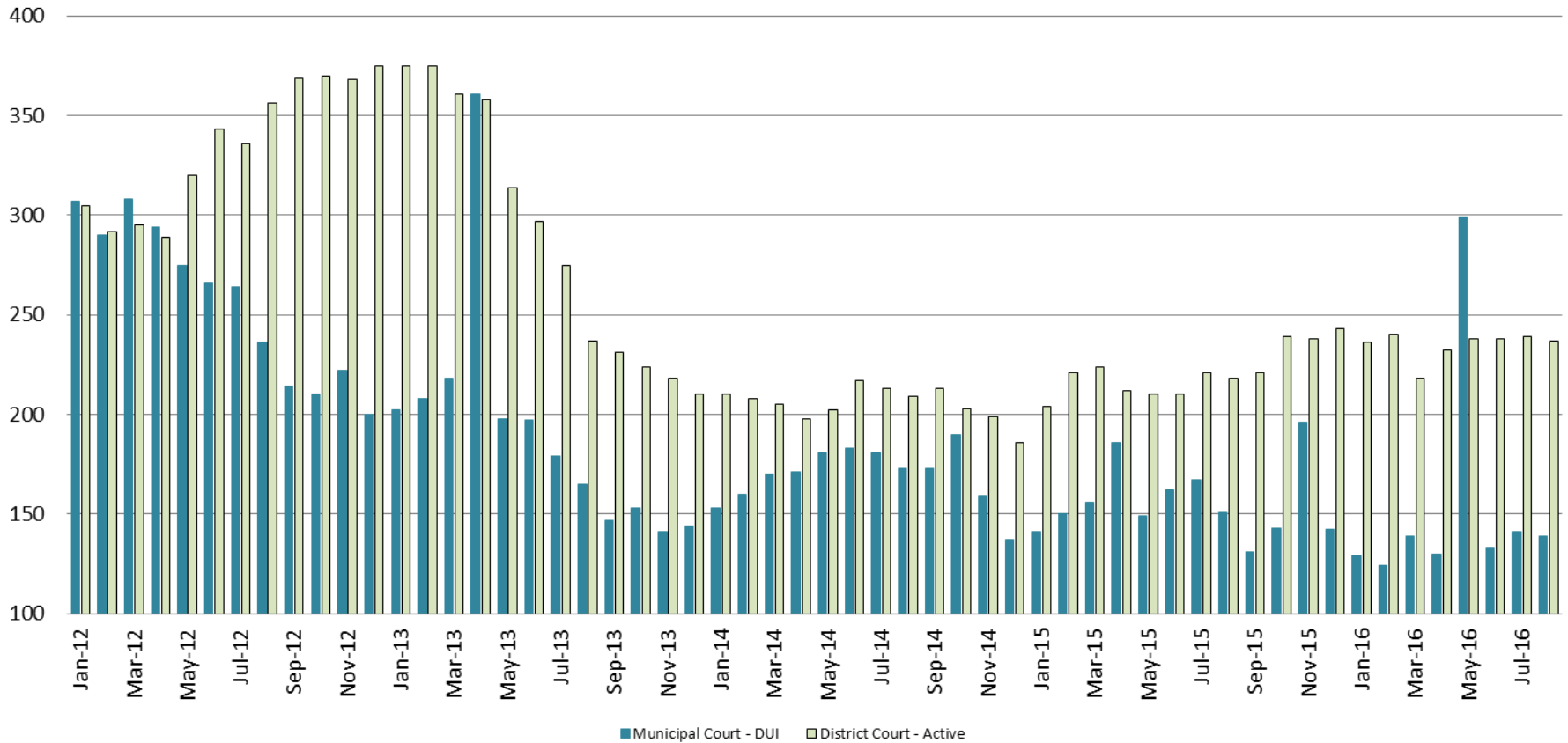
Arrows represent the overall increase/decrease of the population from year to year

Jail includes individuals in booking, detention, work release and out-of county (combined)



Diversion - Active Caseload

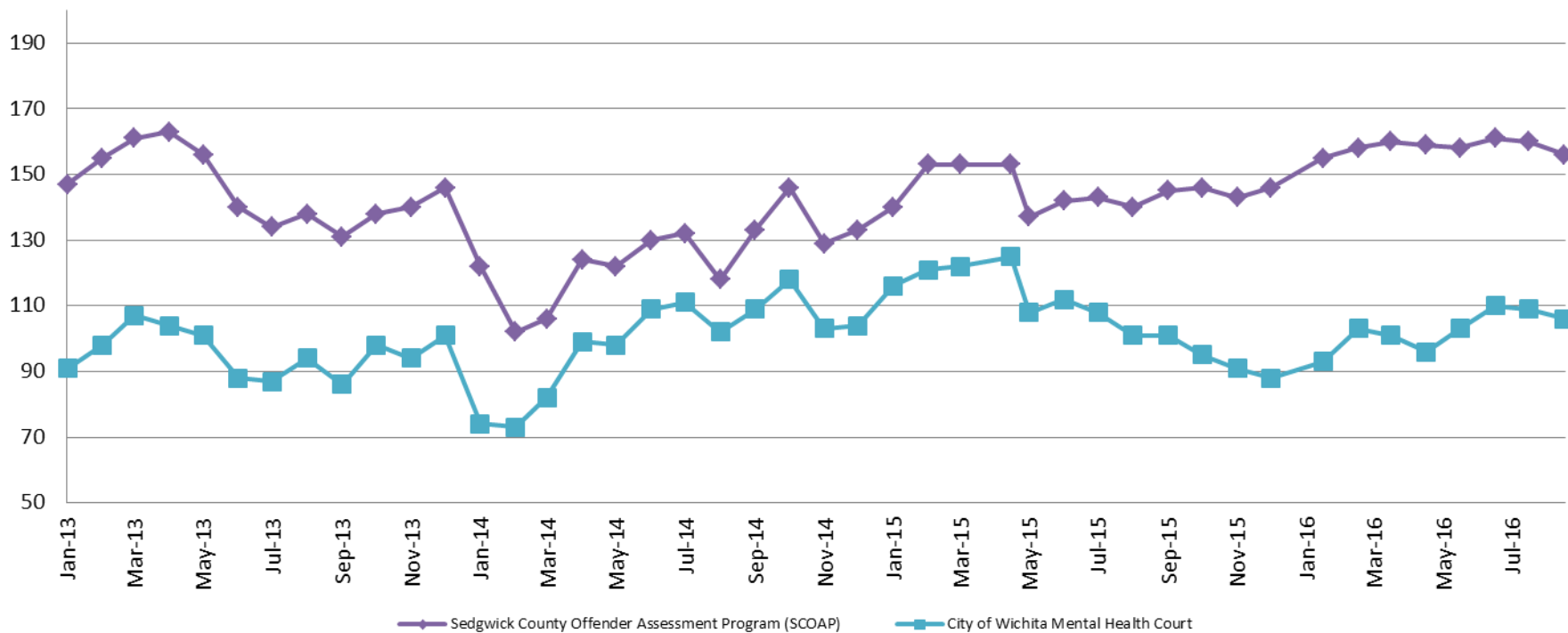
January 2012 - Present



August	2013	2014	2015	2016
Municipal Court- DUI	165	173	151	139
District Court- Active	237	209	218	237

August YTD Avg.	2013	2014	2015	2016
Municipal Court	216	172	158	154
District Court	324	208	215	235

Mental Health - ADP 2013 - present



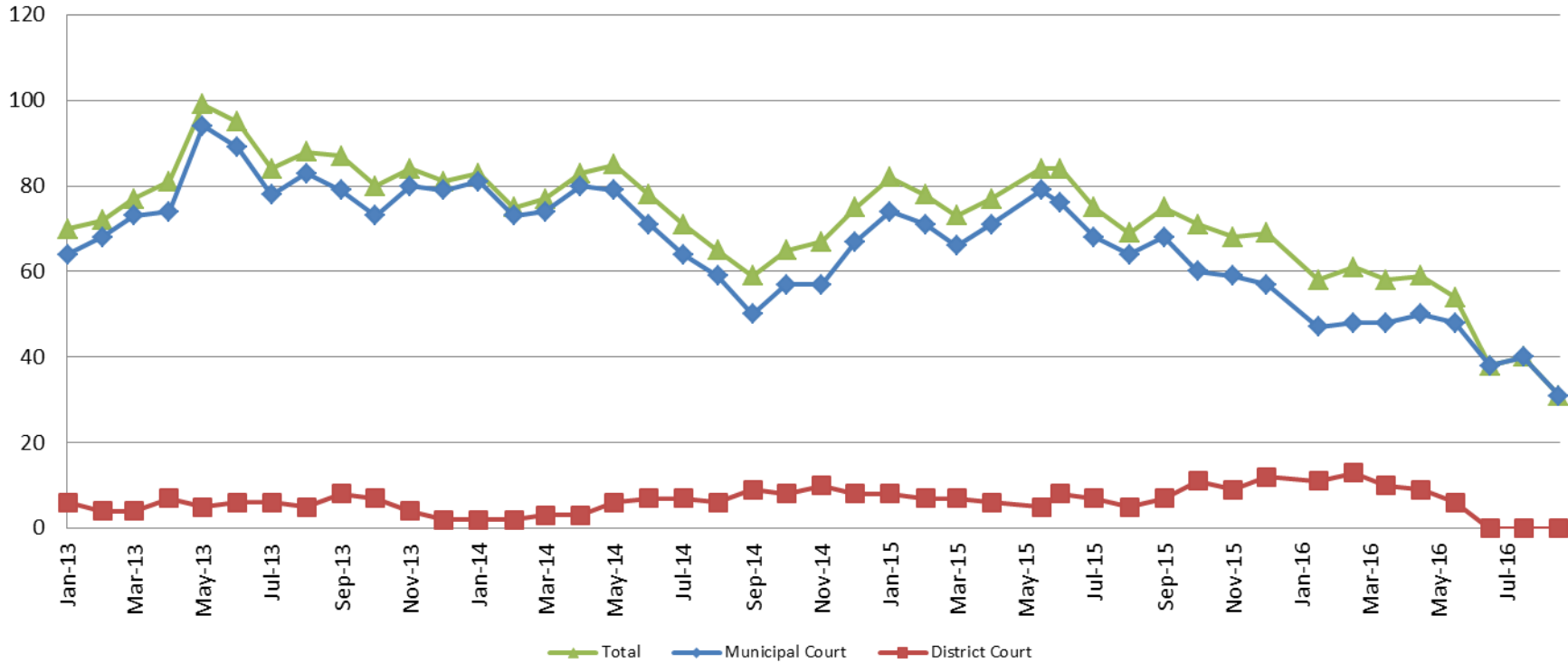
August:	2013	2014	2015	2016
SCOAP	138	118	140	156
CoW – MH Court	94	102	101	106
August YTD Avg.	2013	2014	2015	2016
SCOAP	149	120	145	158
CoW – MH Court	96	94	114	103

(data obtained from COMCARE)



*Sedgwick County...
working for you*

Day Reporting - Active Caseload 2013-present

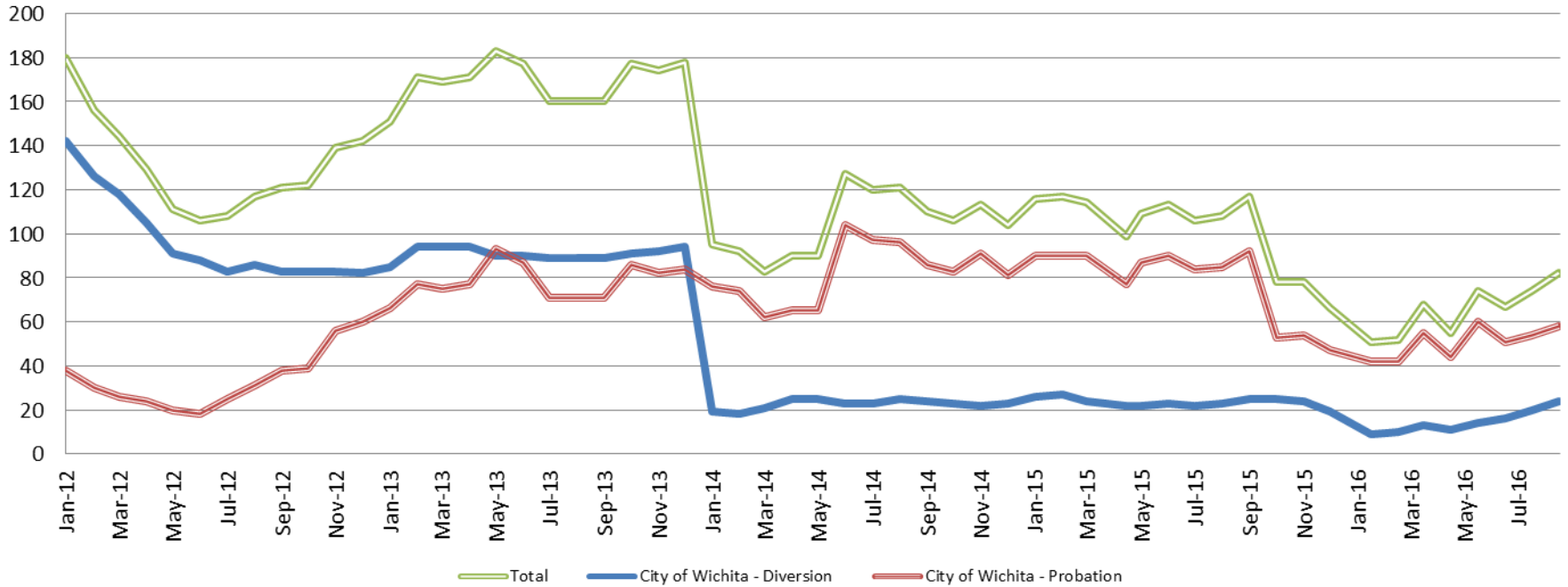


August	2013	2014	2015	2016
Municipal Court	83	59	64	31
District Court	5	6	5	0*
TOTAL	88	65	69	31
August YTD Avg.	2013	2014	2015	2016
Municipal Court	78	73	71	44
District Court	5	5	7	6
TOTAL	83	77	78	50



Drug Court - City of Wichita

ADP: 2012 - present



August - CoW Diversion

2013 = 89
 2014 = 25
 2015 = 23
 2016 = 24

August YTD Avg.

2013 = 91
 2014 = 22
 2015 = 24
 2016 = 15

August - CoW Probation

2013 = 71
 2014 = 96
 2015 = 85
 2016 = 58

August YTD Avg.

2013 = 77
 2014 = 80
 2015 = 87
 2016 = 51

August - CoW Total

2013 = 160
 2014 = 121
 2015 = 108
 2016 = 82

August YTD Avg.

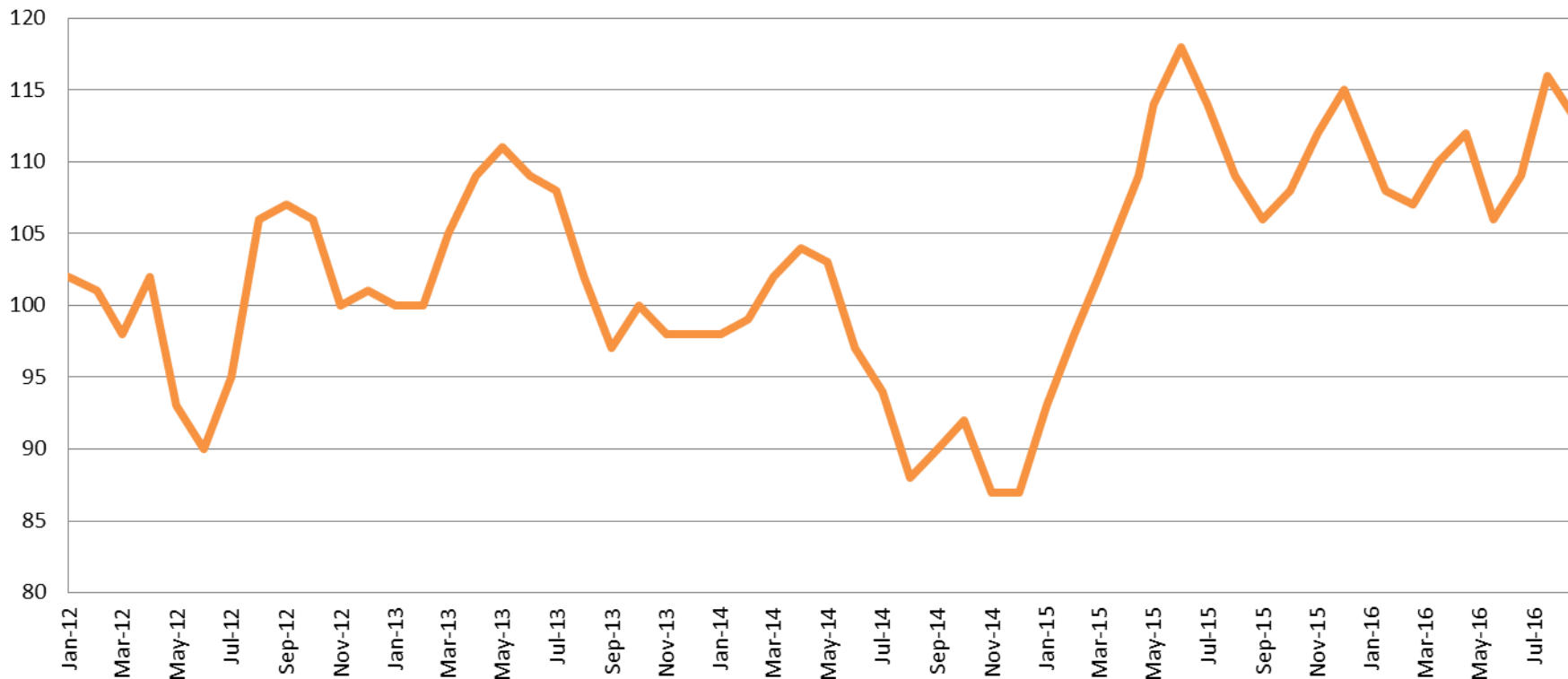
2013 = 168
 2014 = 102
 2015 = 110
 2016 = 65

(data obtained from CoW)



*Sedgwick County...
 working for you*

Drug Court - Sedgwick County ADP: 2012 - present



August - SG CO

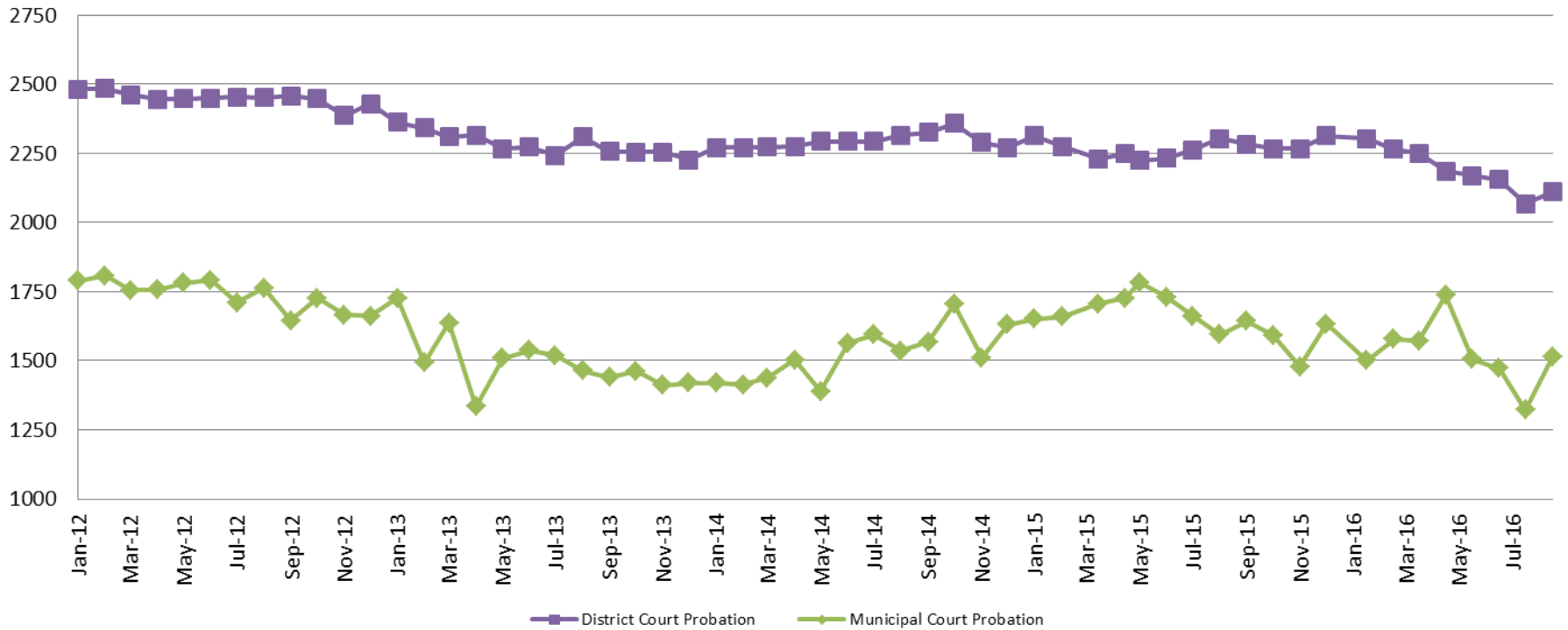
2013 = 102
2014 = 88
2015 = 109
2016 = 113

August YTD Avg.

2013 = 106
2014 = 98
2015 = 107
2016 = 110



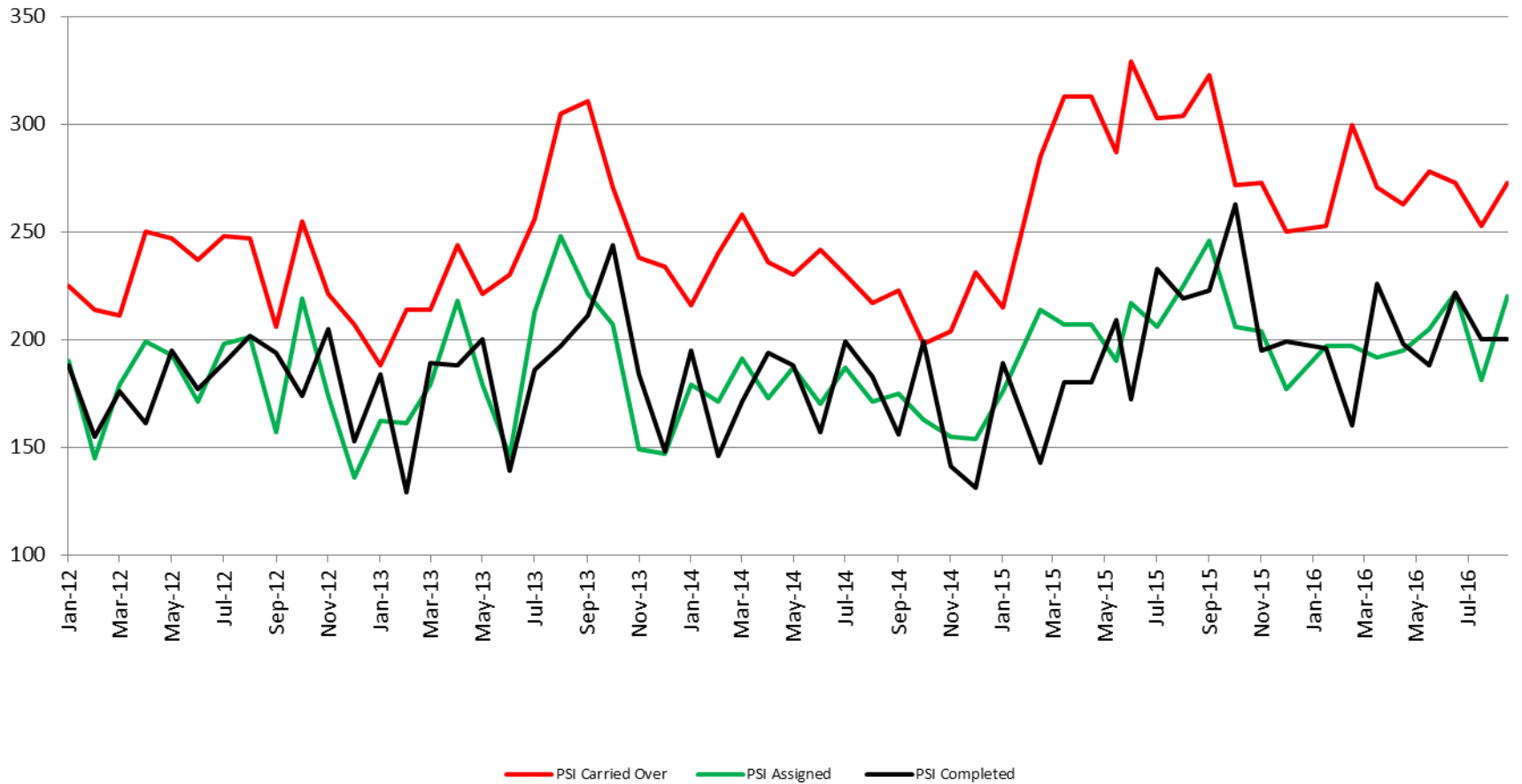
Probation - Active Caseloads 2012 - present



August	2013	2014	2015	2016
District Court	2,309	2,316	2,303	2,111
Municipal Court	1,465	1,535	1,595	1,514
August YTD Avg.	2013	2014	2015	2016
District Court	2,303	2,291	2,261	2,189
Municipal Court	1,528	1,482	1,689	1,526

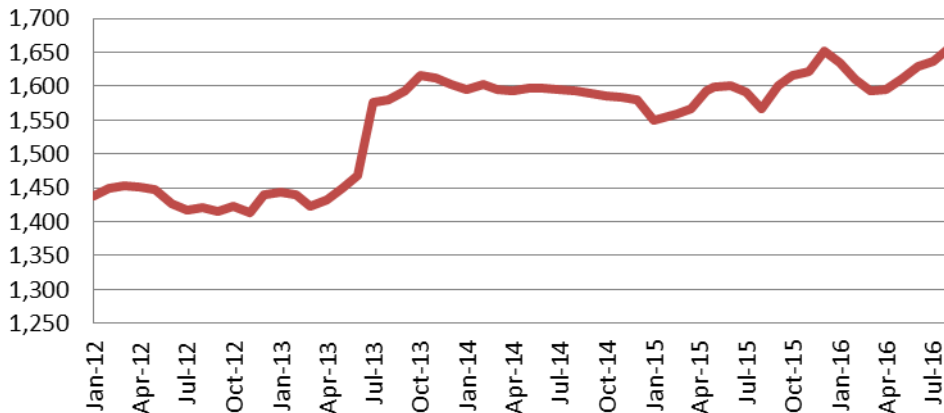


District Court Probation: Pre-Sentence Investigation 2012 - present



Community Corrections

**Adult Intensive Supervision Probation (AISP) ADP
2012 - present**



<u>August</u>	<u>August YTD Avg.</u>
2013 = 1,580	2013 = 1,477
2014 = 1,593	2014 = 1,596
2015 = 1,566	2015 = 1,578
2016 = 1,656	2016 = 1,621

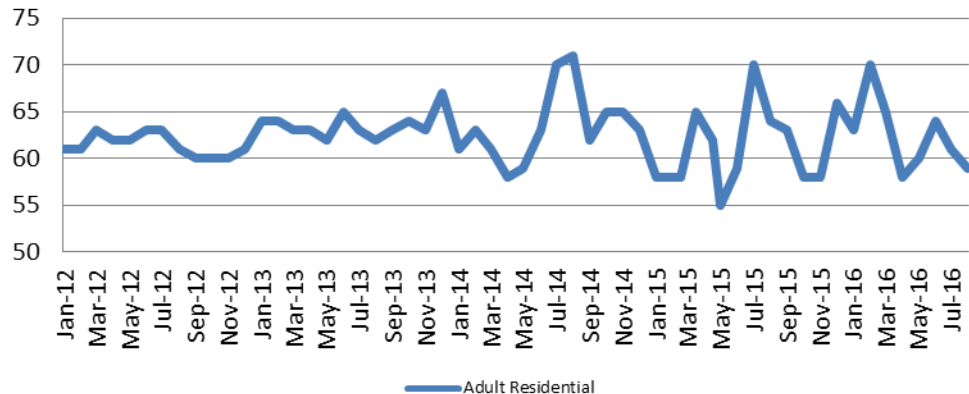
(data obtained from SG CO Dept. of Corrections)

*KDOC changed population count to include drug court, residential and AISP beginning July 2013.

**Adult Residential: ADP
2012 - present**

<u>August</u>	<u>August YTD Avg.</u>
2013 = 62	2013 = 63
2014 = 71	2014 = 63
2015 = 64	2015 = 61
2016 = 59	2016 = 63

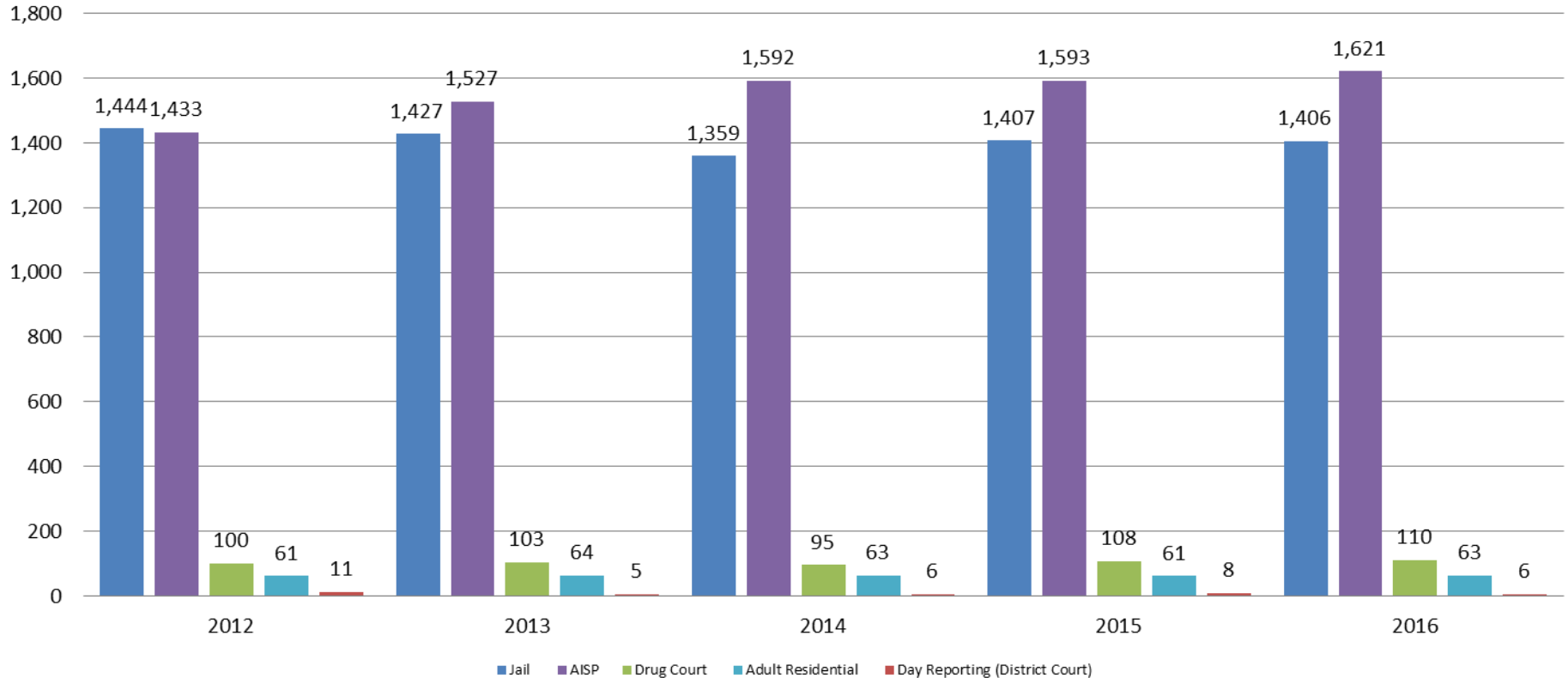
(data obtained from SG CO Dept. of Corrections)



— Adult Residential

Correlation: Total & Sedgwick County Programs (Adult)

Total Annual ADP: 2012 - Present

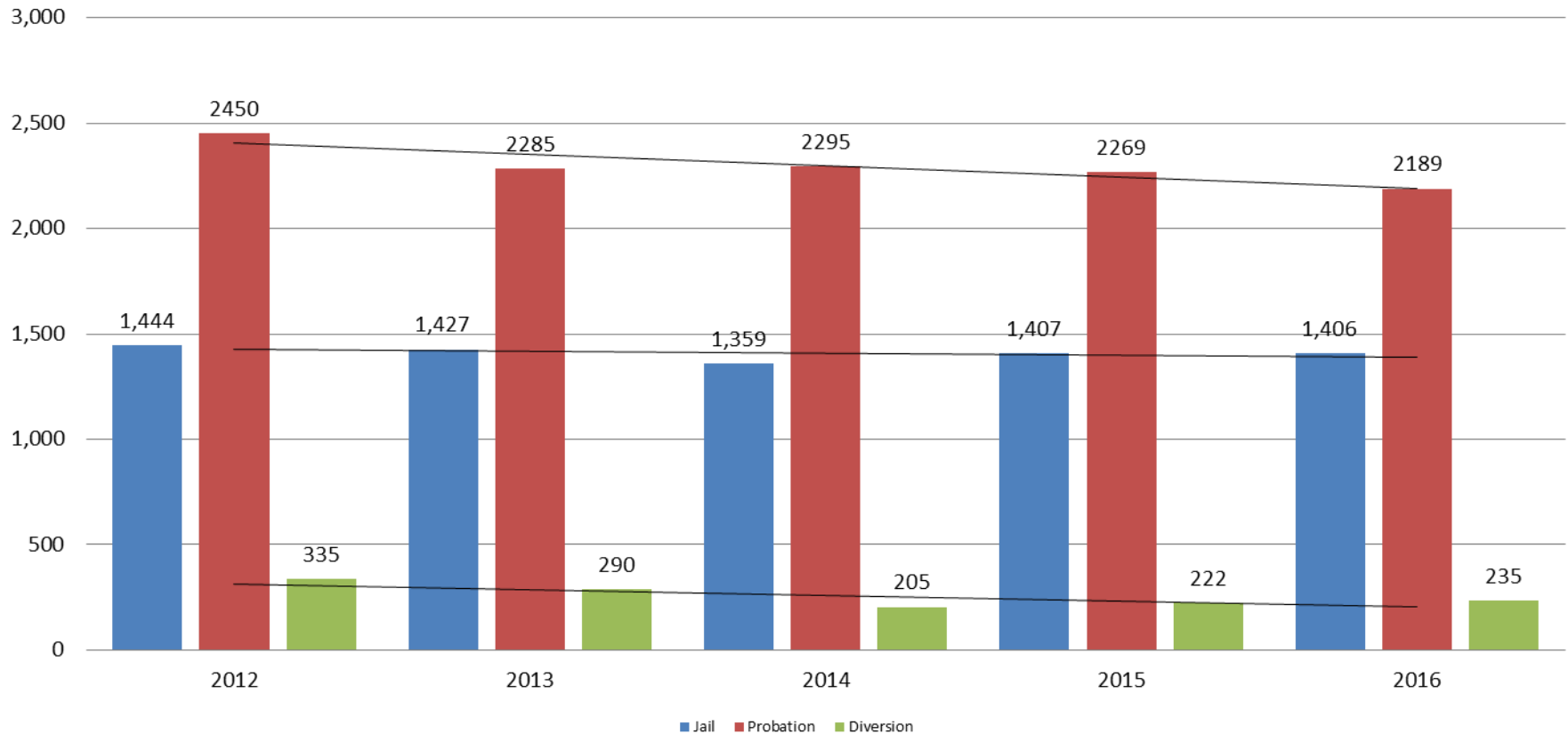


Jail includes individuals in booking, detention, work release and out-of county (combined)



Correlation: Total & District Court Programs

Total Annual ADP: 2012 - Present

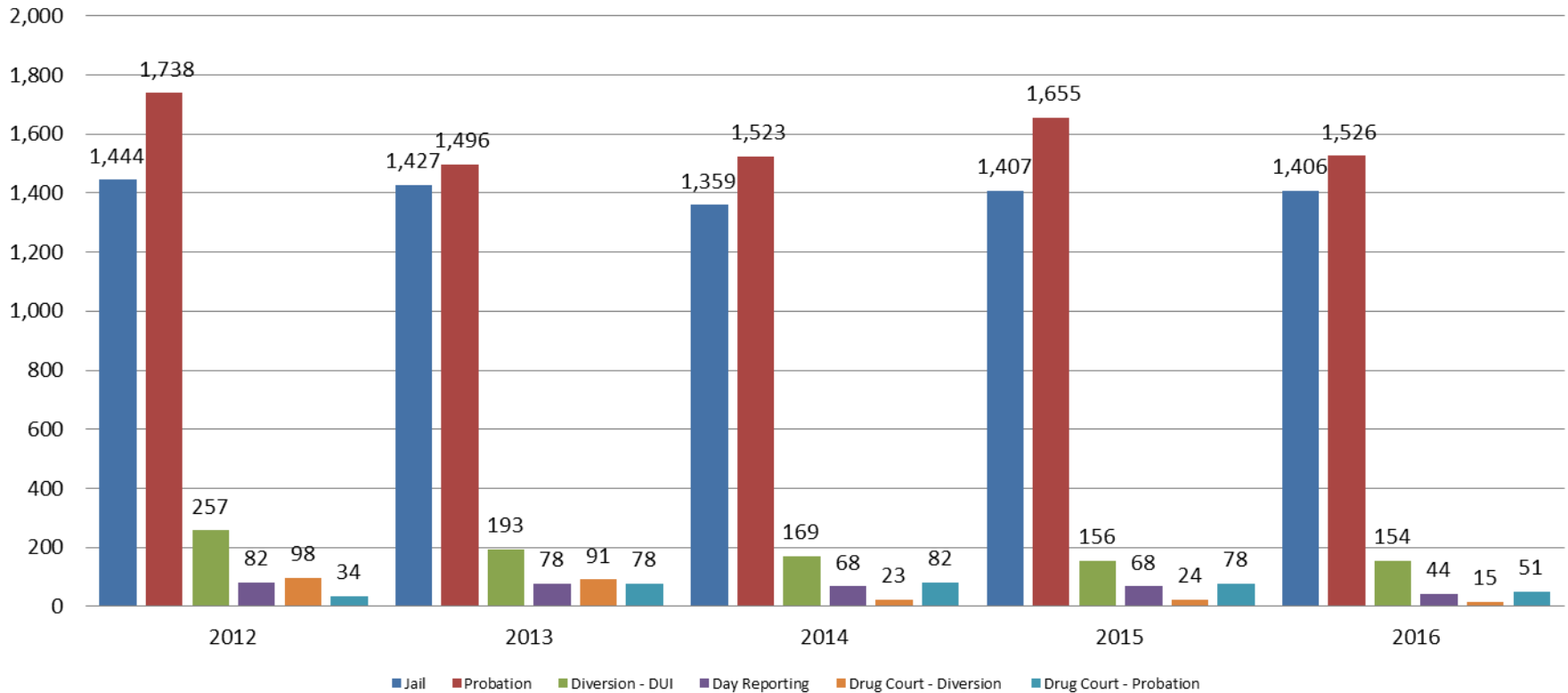


Jail includes individuals in booking, detention, work release and out-of county (combined)



Correlation: Total & City of Wichita / Municipal Court Programs

Total Annual ADP: 2012 - present

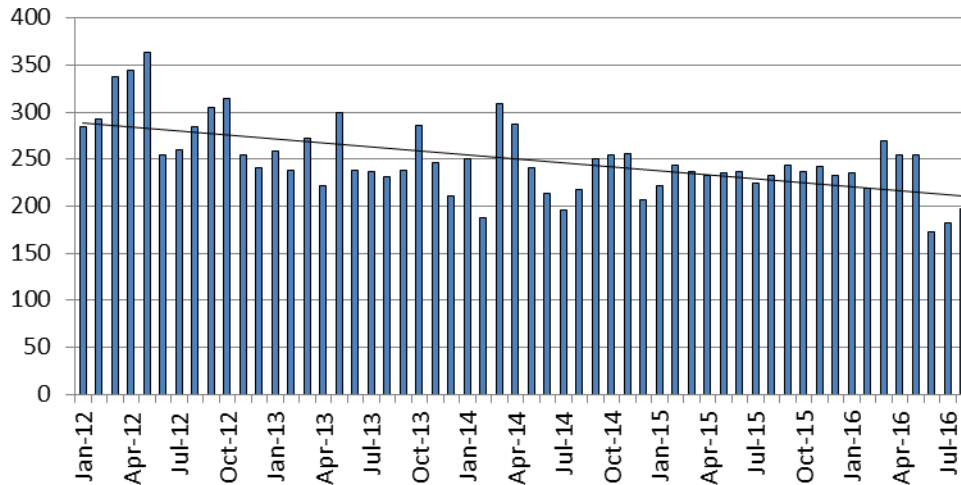


Jail includes individuals in booking, detention, work release and out-of county (combined)



Juvenile

JIAC Intakes: 2012 - present



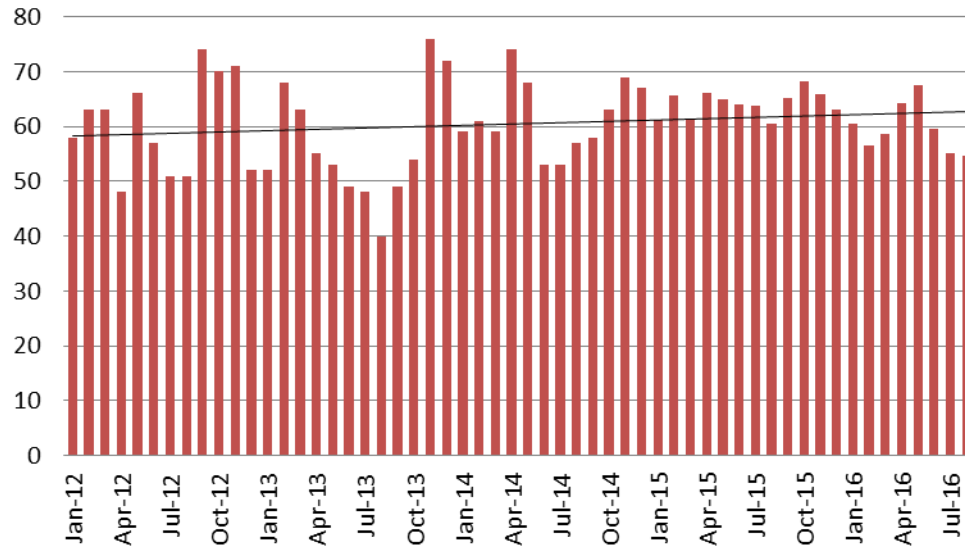
August	August YTD Average
2013 = 231	2013 = 249
2014 = 218	2014 = 238
2015 = 233	2015 = 233
2016 = 197	2016 = 223

(data obtained from SG CO Dept. of Corrections)

JDF ADP: 2012 - present

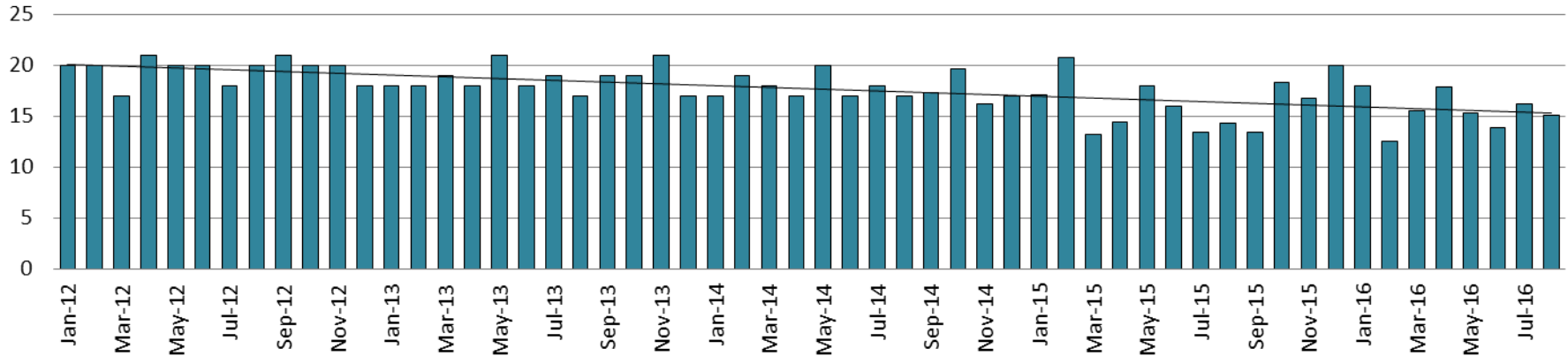
August	August YTD Avg.
2013 = 40	2013 = 54
2014 = 57	2014 = 61
2015 = 60	2015 = 63
2016 = 55	2016 = 60

(data obtained from SG CO Dept. of Corrections)

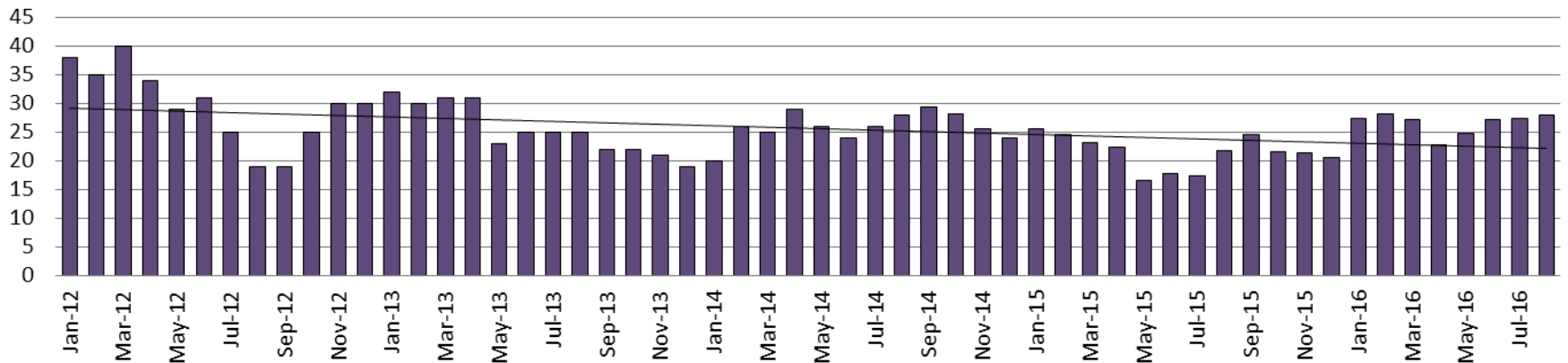


Juvenile Detention Alternatives

Juvenile Residential Facility (JRF) ADP: 2012 - present

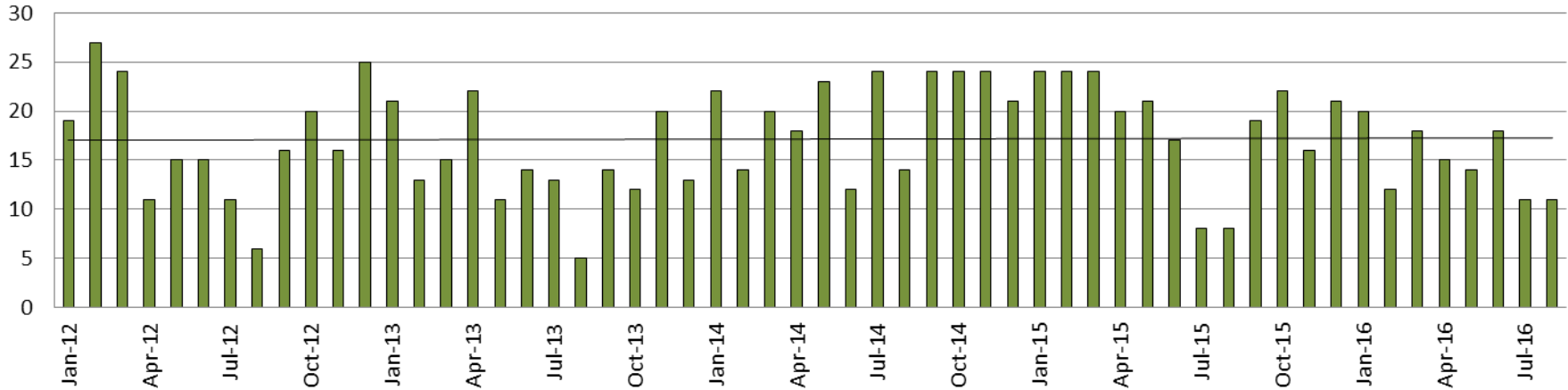


Home-Based Supervision ADP: 2012 - present

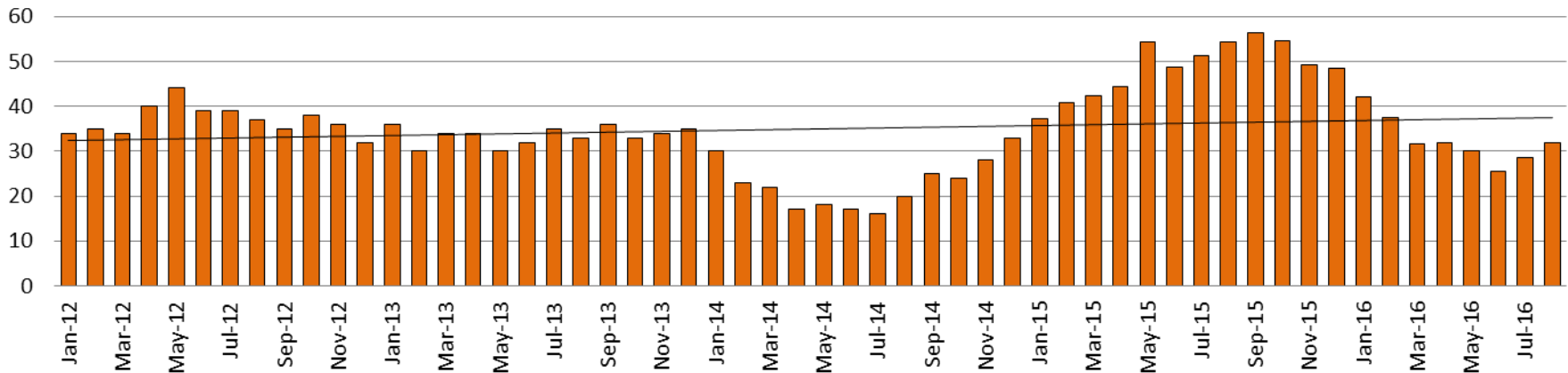


Juvenile Detention Alternatives

Weekend Alternative Detention Program 2012 - present



Detention Advocacy Case Management Services ADP: 2012 - present



Juvenile Detention Services

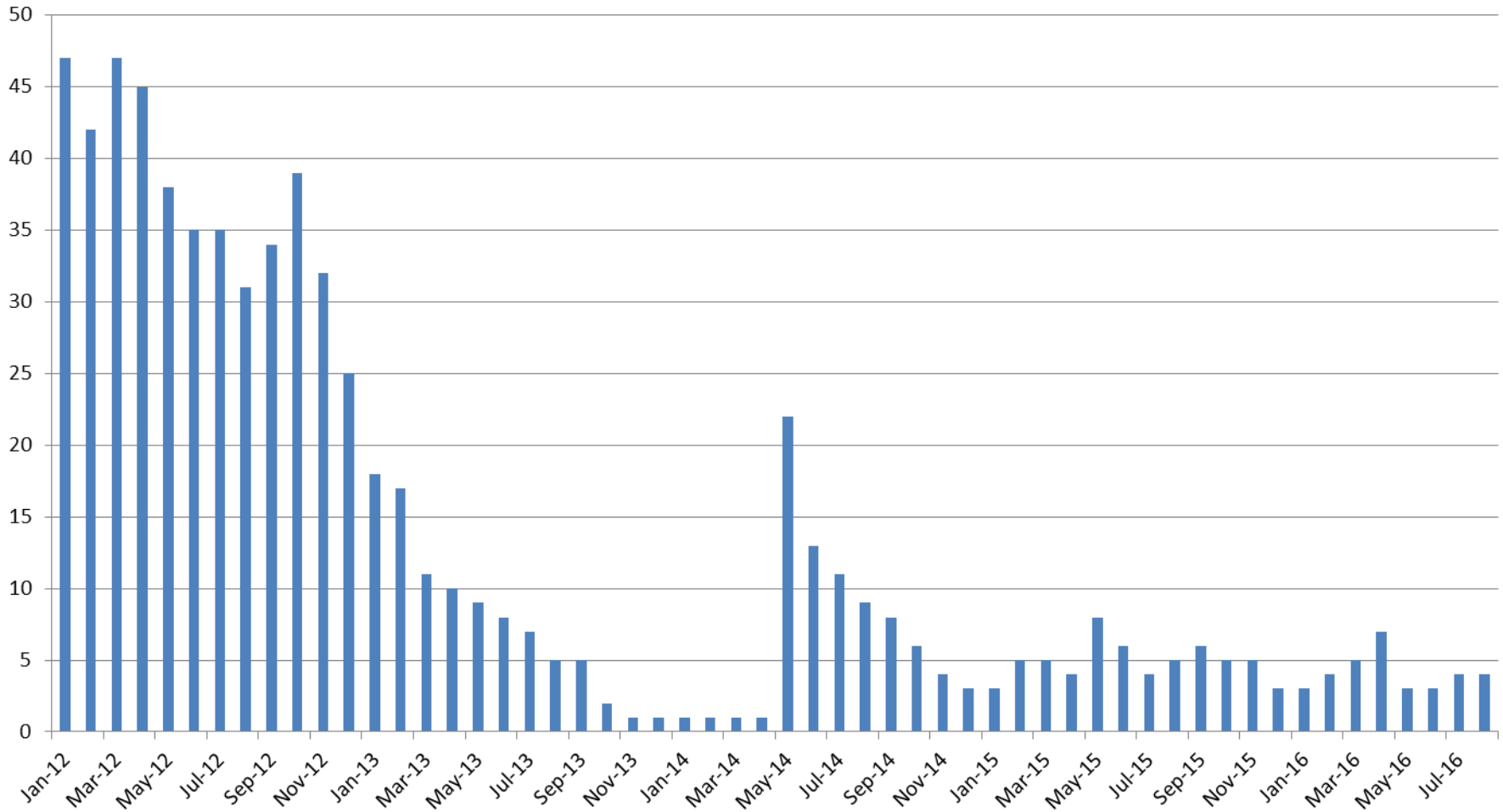
August ADP	2013	2014	2015	2016
Juvenile Detention Facility	40	57	60	55
Juvenile Residential Facility	17	17	14	15
Home Based Supervision	25	28	22	28
Detention Advocacy Case Management Services	33	20	54	32
Weekend Alternative Detention Program (total)	5	14	8	11

August YTD AVERAGE	2013	2014	2015	2016
Juvenile Detention Facility	54	61	63	60
Juvenile Residential Facility	19	18	16	16
Home Based Supervision	28	26	21	27
Detention Advocacy Case Management Services	33	20	47	32
Weekend Alternative Detention Program	14	18	18	15



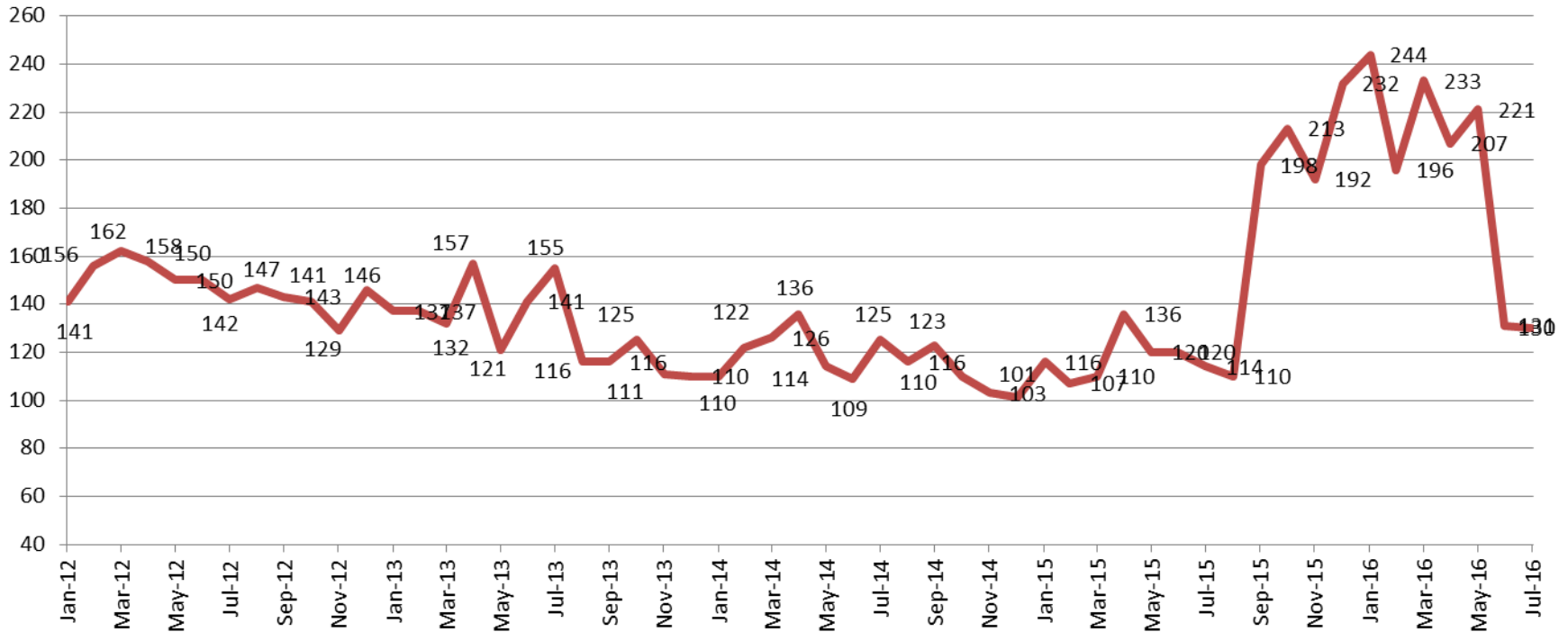
Monthly Jail Snapshot: August 31, 2016

BICE Holds 2012-Present



Monthly Jail Snapshot: August 31, 2016

Felony Commitments: February 2012 - present

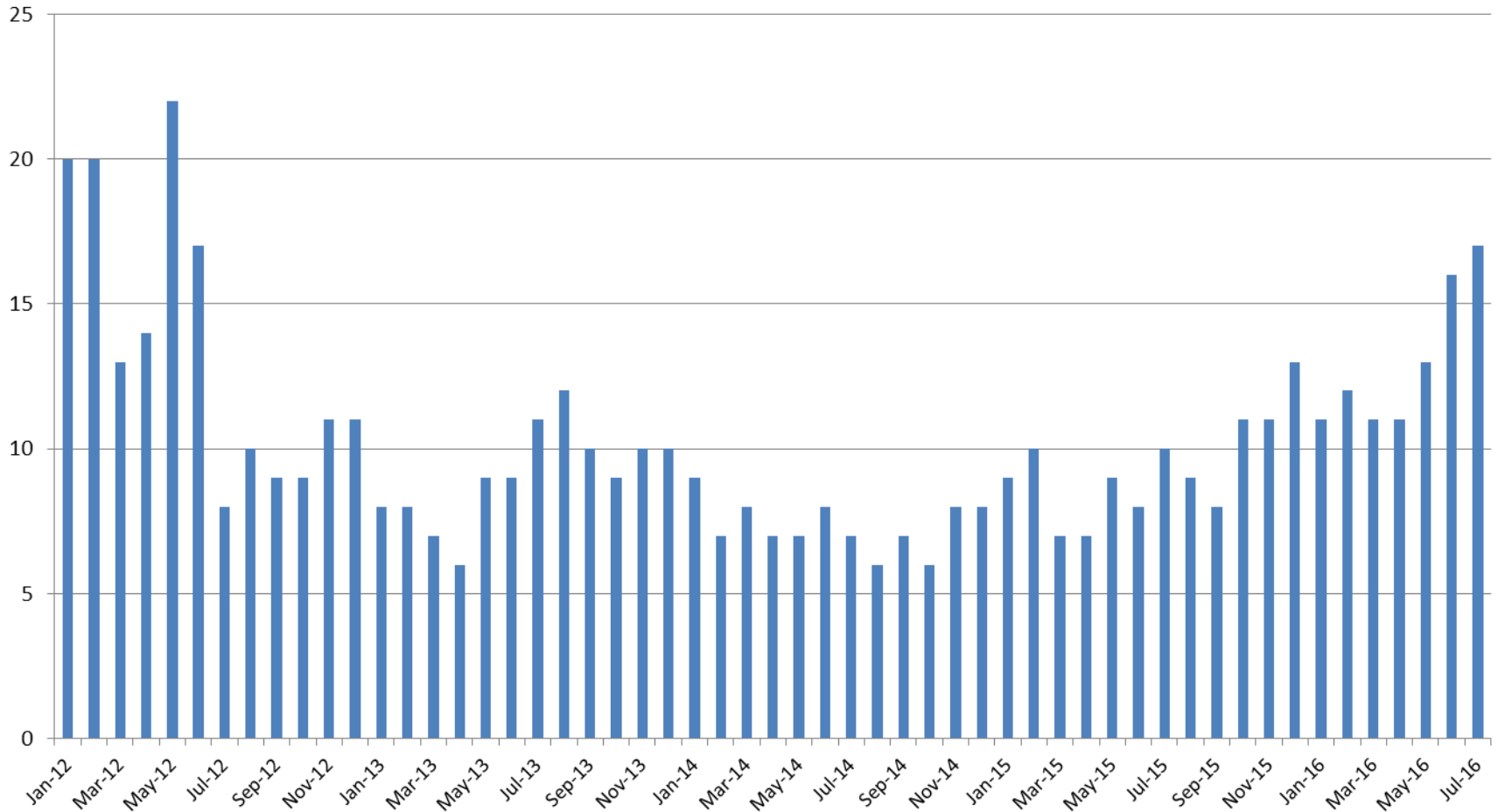


August:

2012 = 142	2015 = 114
2013 = 155	2016 = 130
2014 = 125	

(data obtained from SG CO DIO)

Journal Entry Completion (Average Days) January 2013-Present



This data is always reported a month behind

