

Criminal Justice Coordinating Council

Population Report & Program Trends

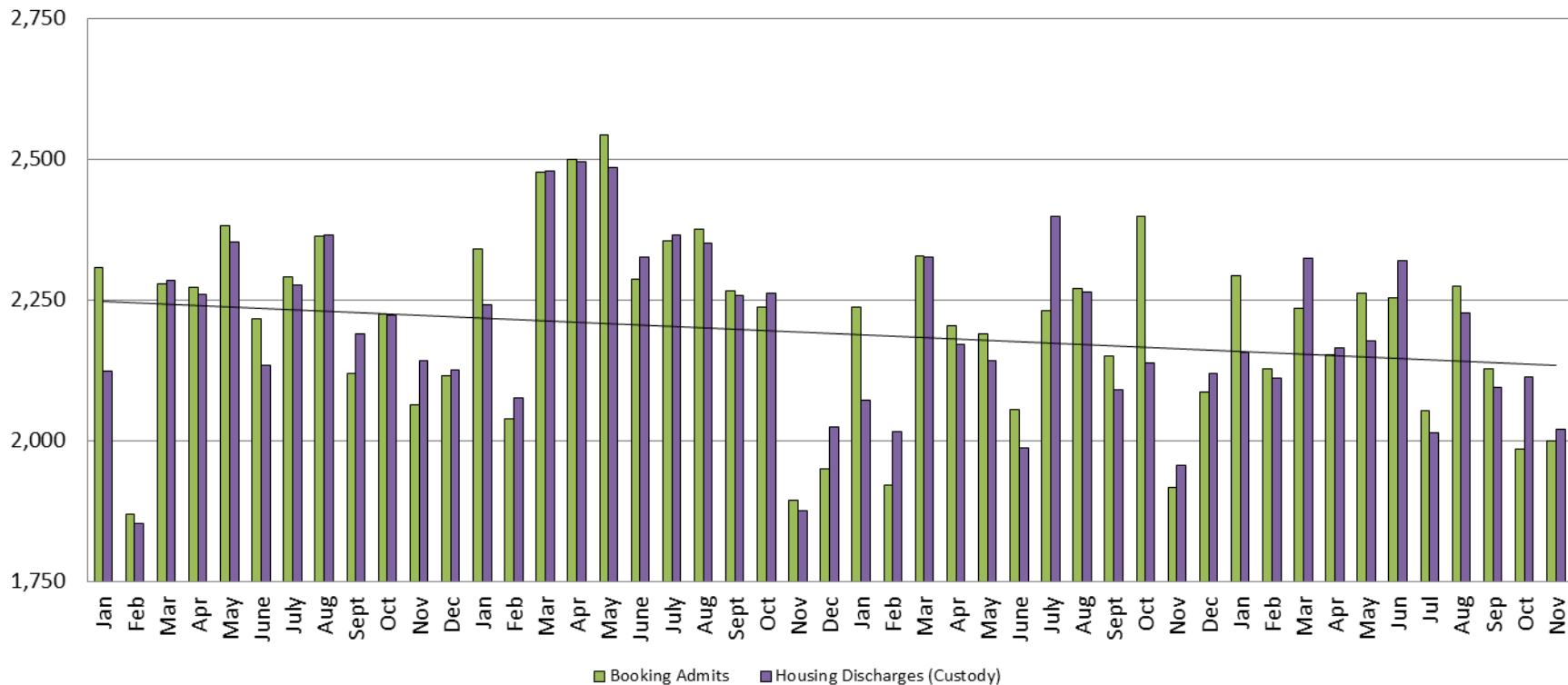
December 2016



Sedgwick County...
working for you

Detention Facility

Booking Admits & Housing Discharges from Custody January 2013 - Present



Housing Discharges for November

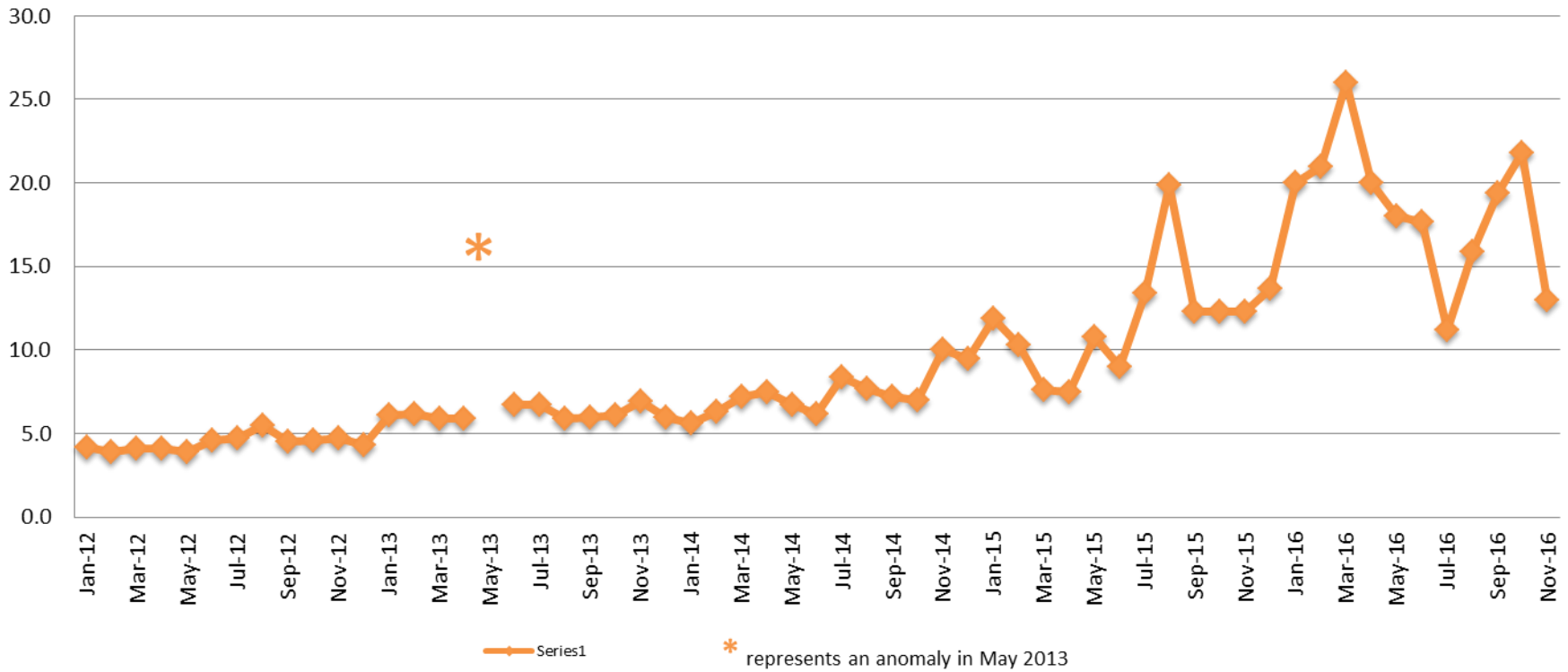
2014 = 1,876
 2015 = 1,956
 2016 = 2,021

Bookings for November

2014 = 1,895
 2015 = 1,917
 2016 = 2,000



Average Length of Stay: Booking (Hours) January 2012 - Present



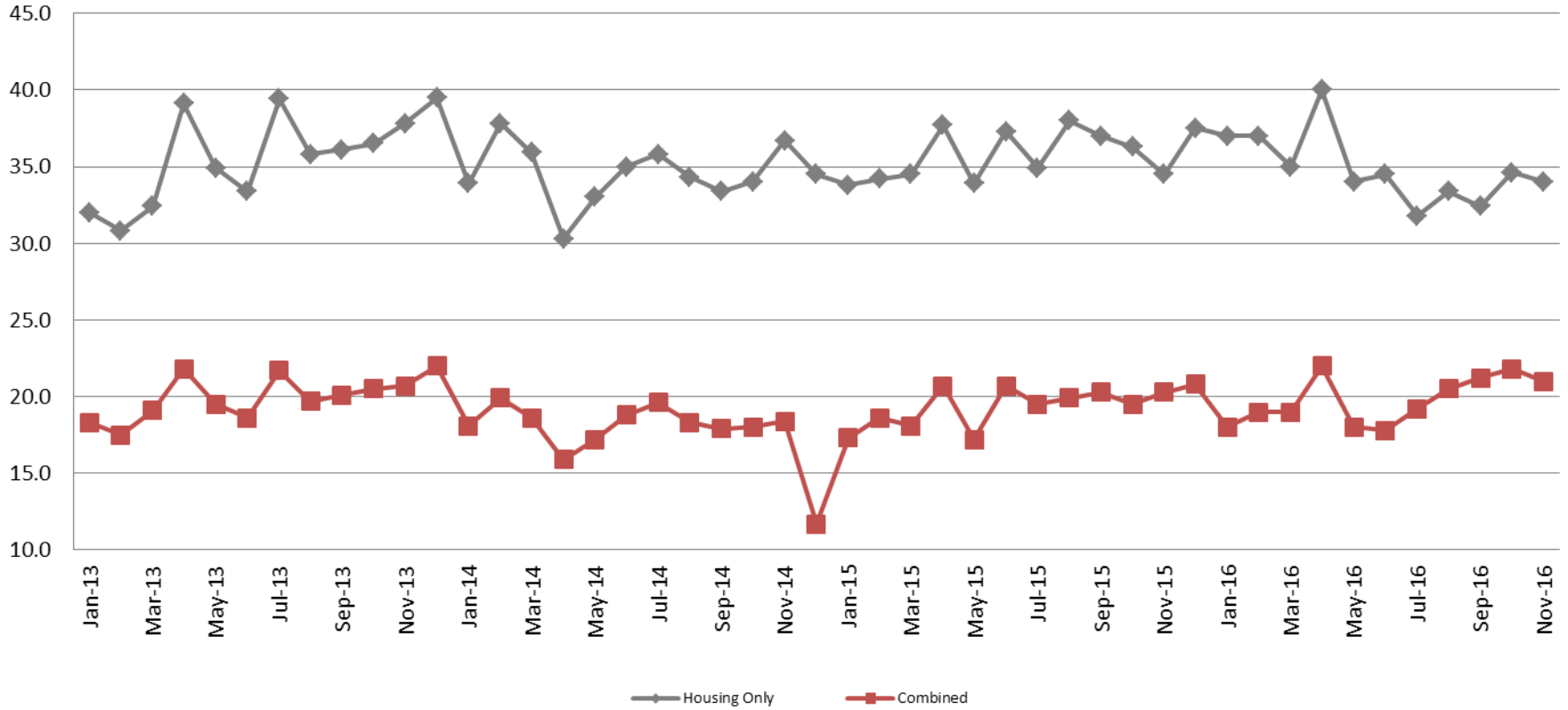
November

2012 = 4.7
 2013 = 6.9
 2014 = 10.0
 2015 = 12.3
 2016 = 13.0

November YTD Avg.

2012 = 4.4
 2013 = 7.1
 2014 = 7.3
 2015 = 11.6
 2016 = 18.5

Average Length of Stay: Housing & Combined (Days) January 2013 - Present



November Housing November Housing YTD Avg.

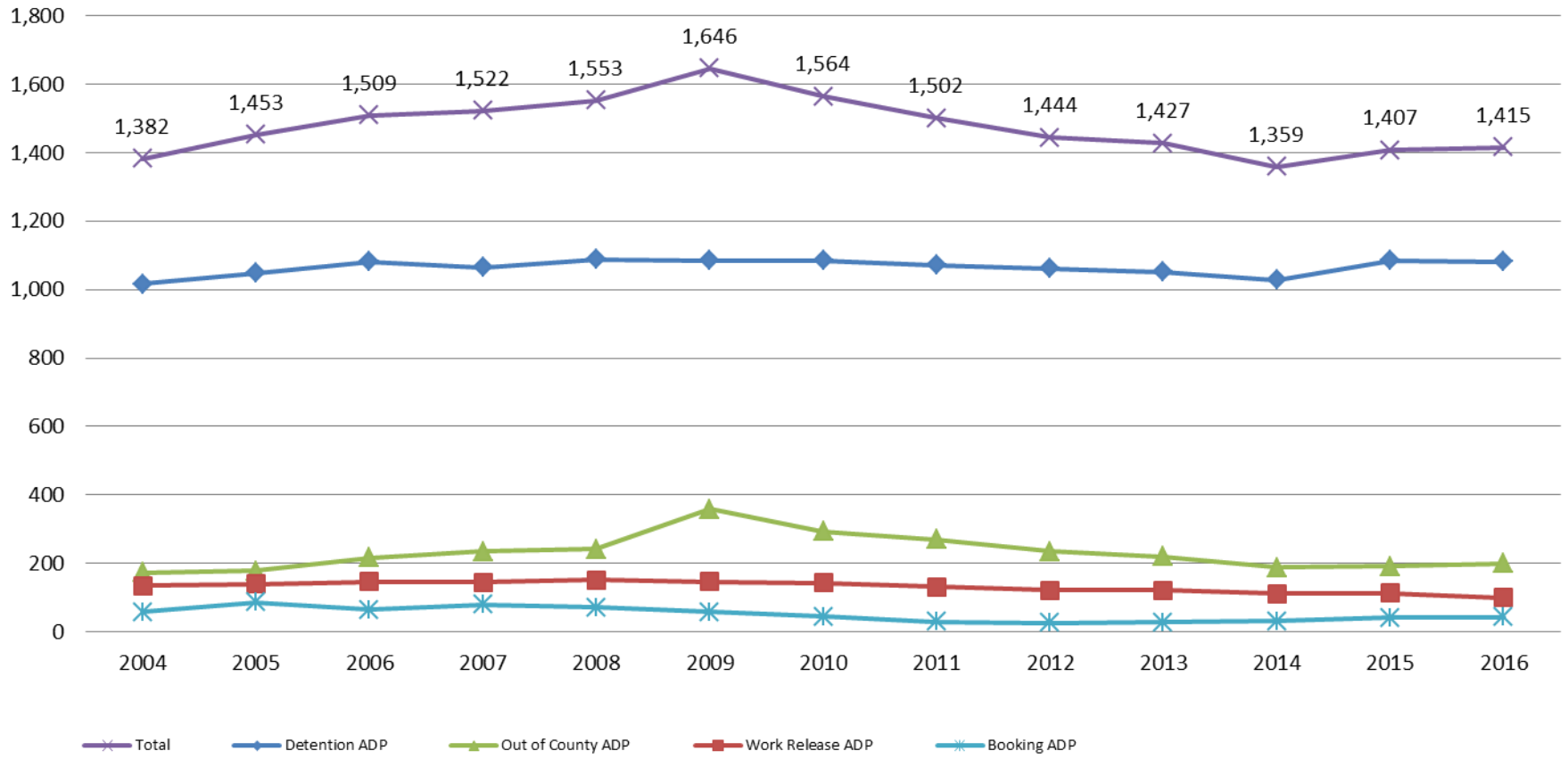
2013 = 37.8	2013 = 35.3
2014 = 36.7	2014 = 34.6
2015 = 34.5	2015 = 35.6
2016 = 34.0	2016 = 34.9

November Combined November Combined YTD Avg.

2013 = 20.7	2013 = 19.8
2014 = 18.4	2014 = 18.2
2015 = 20.3	2015 = 19.3
2016 = 21.0	2016 = 19.8

Jail: Annual Average Daily Population (ADP)

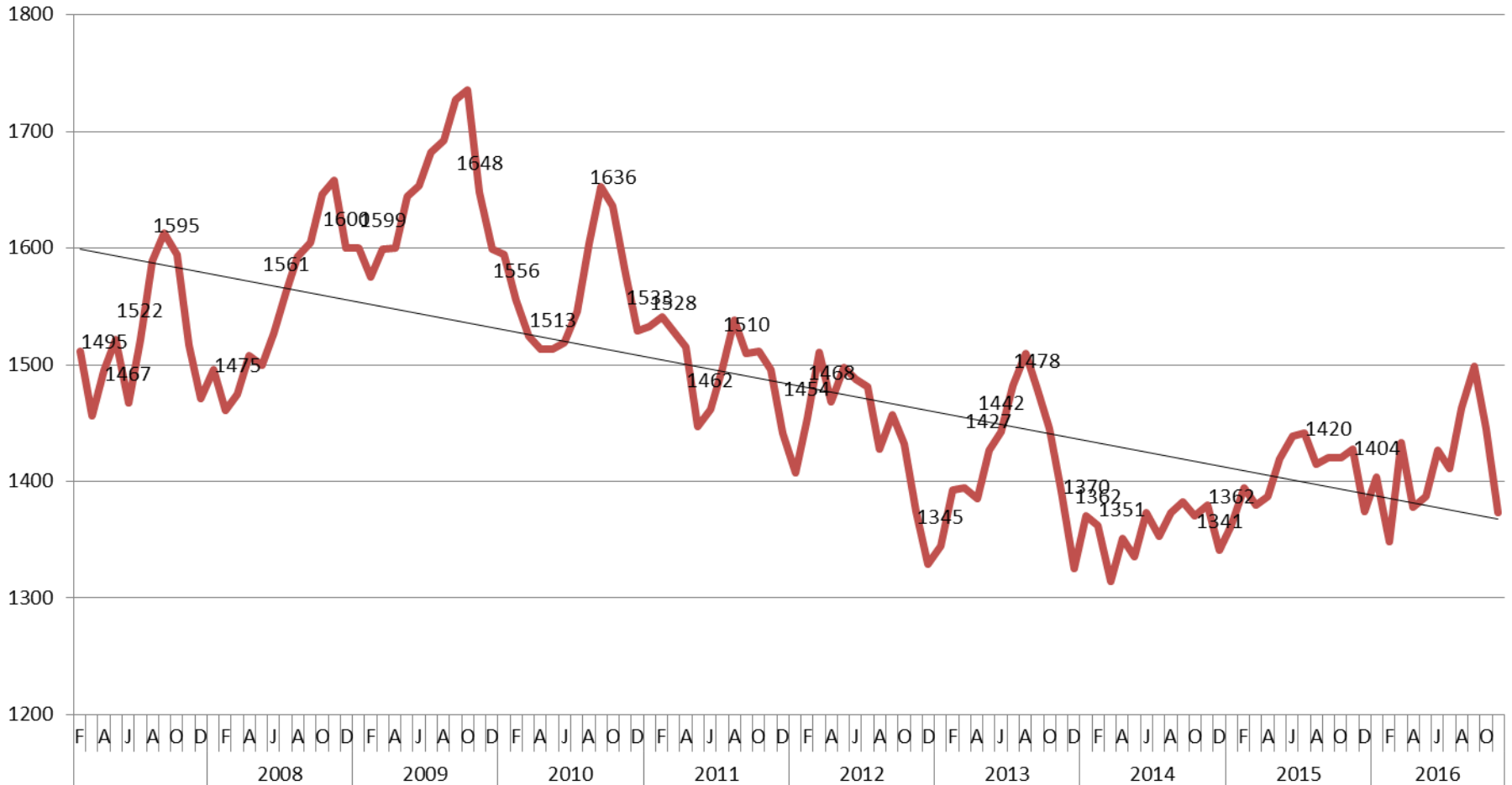
TRENDS: Booking, Detention, Work Release, & Out of County
Annual ADP: 2004 - present



TOTAL MONTHLY ADP: JAIL

(Booking, Detention Facility, Work Release, & Out of County)

2007 - present



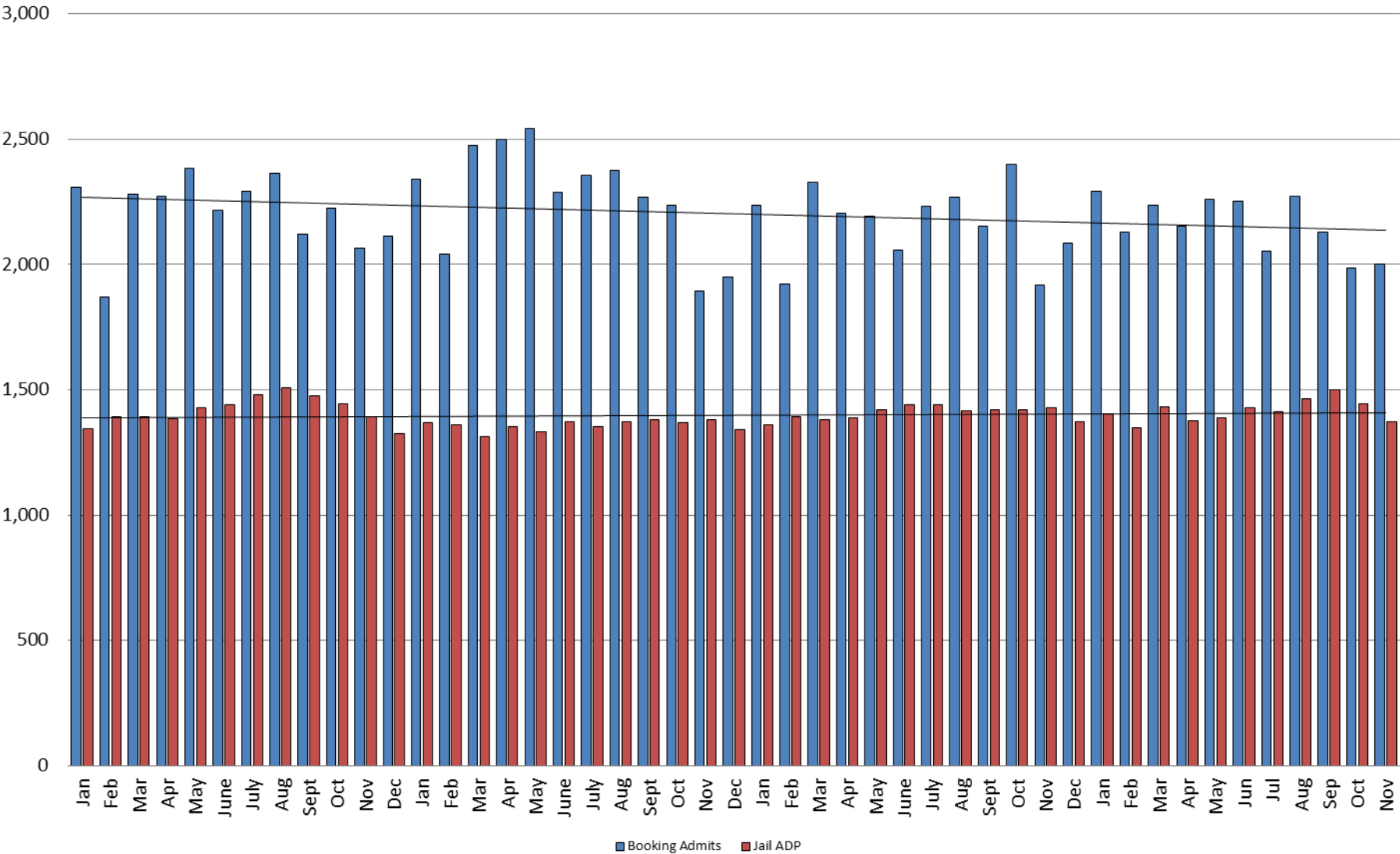
This slide shows total monthly ADP for individuals in booking, detention, work release and out-of county (combined)



*Sedgwick County...
working for you*

(data obtained from detention facility)

Booking Admits & Total Monthly ADP (Jail): 2013 - present

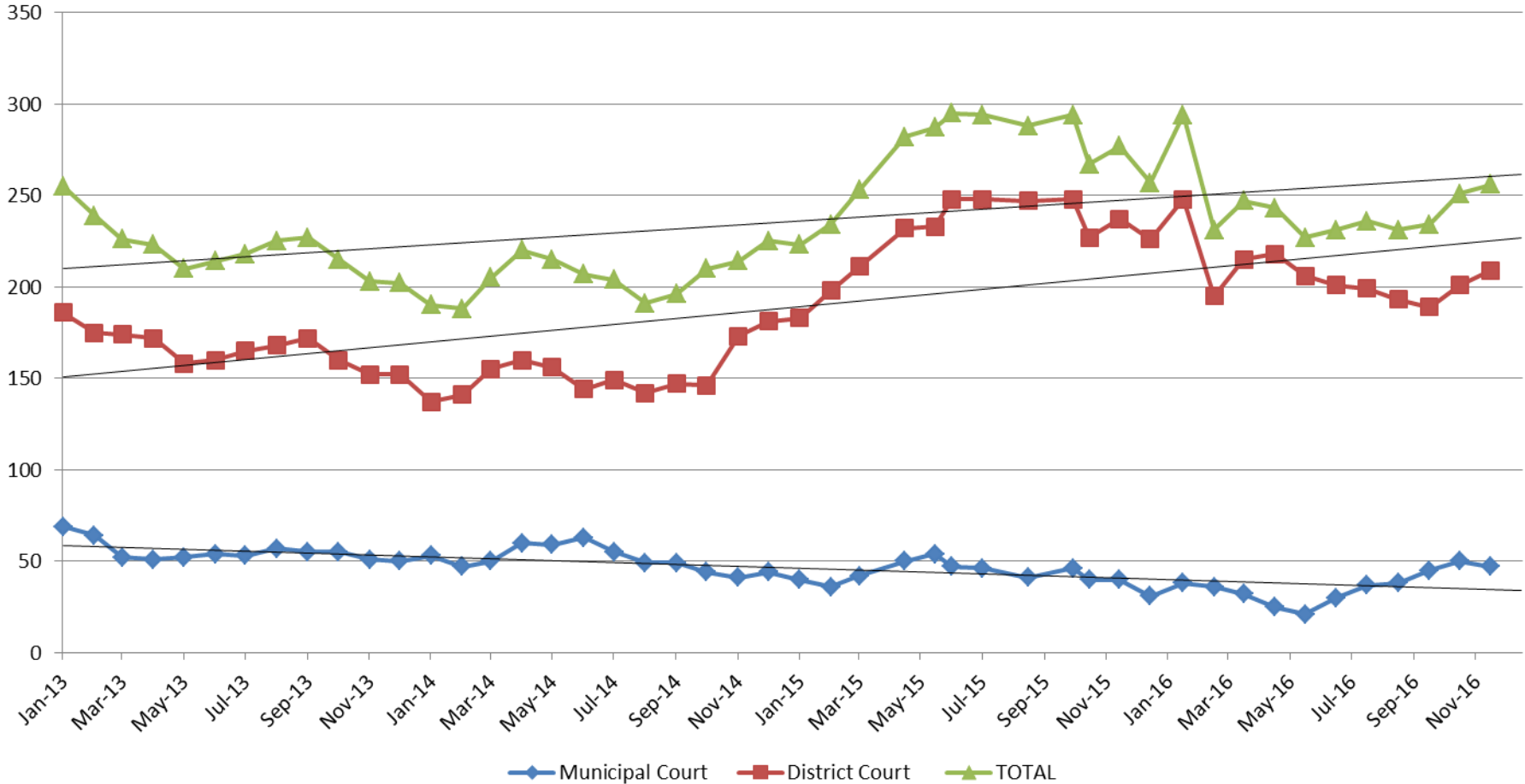


Jail includes individuals in booking, detention, work release and out-of county (combined)

(data obtained from detention facility)



Pretrial Services Program (PSP) Monthly ADP: January 2013 - Present



November	2013	2014	2015	2016
Municipal Court	51	41	40	47
District Court	152	173	237	209
TOTAL	203	214	277	256

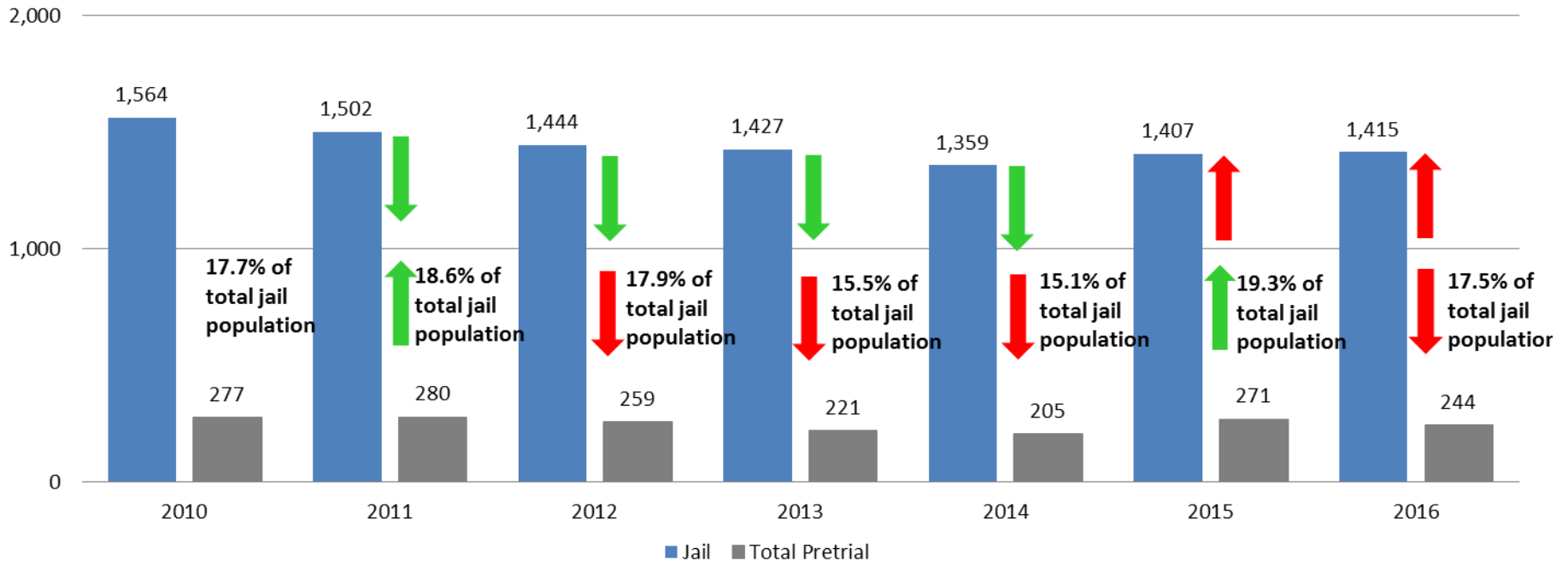
November YTD Avg.	2013	2014	2015	2016
Municipal Court	56	52	44	36
District Court	167	150	228	207
TOTAL	223	204	272	244



(data obtained from Pretrial Services)

Correlation: Total & PSP

Total Annual ADP: 2010 - Present



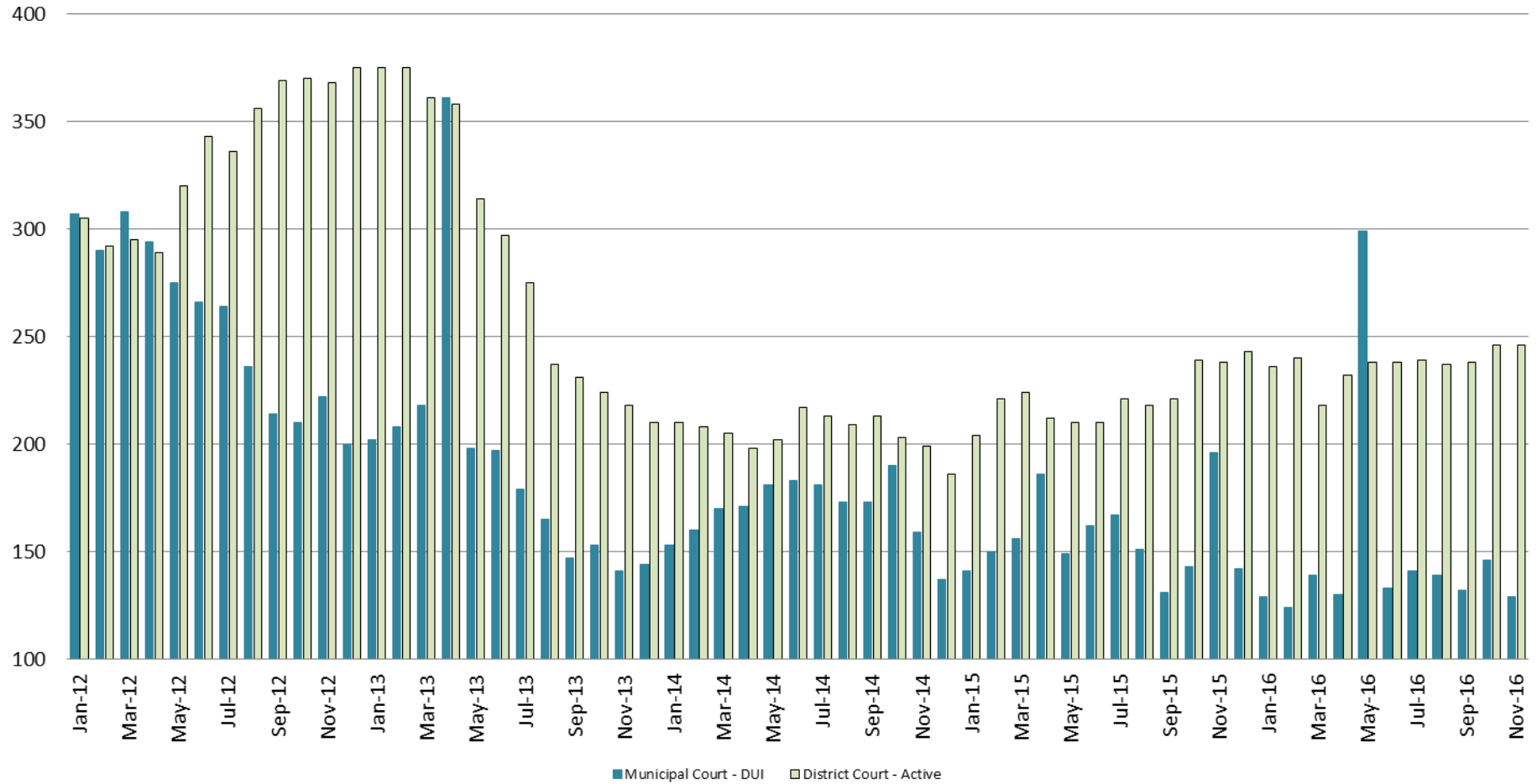
Arrows represent the overall increase/decrease of the population from year to year

Jail includes individuals in booking, detention, work release and out-of county (combined)



Diversion - Active Caseload

January 2012 - Present



November	2013	2014	2015	2016
Municipal Court- DUI	141	159	196	129
District Court- Active	218	199	238	246

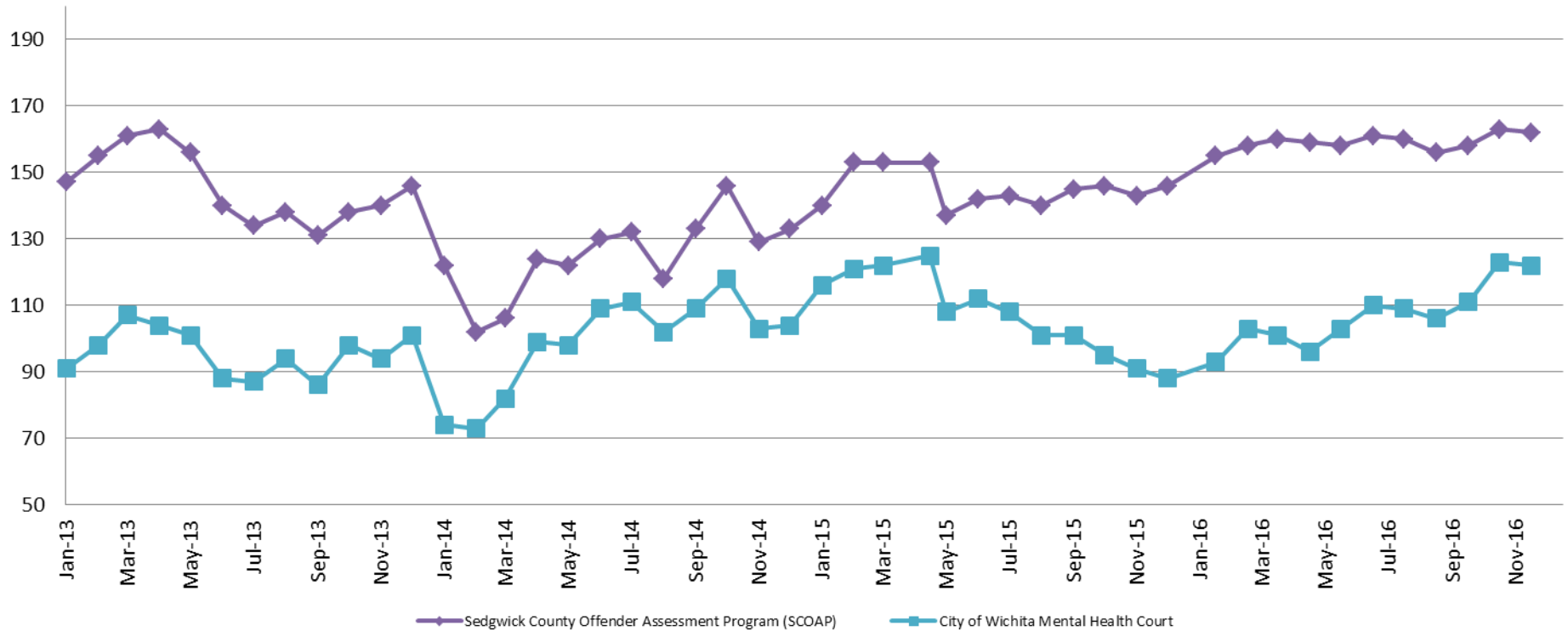
November YTD Avg.	2013	2014	2015	2016
Municipal Court	197	172	157	149
District Court	297	207	220	237



*Sedgwick County...
working for you*

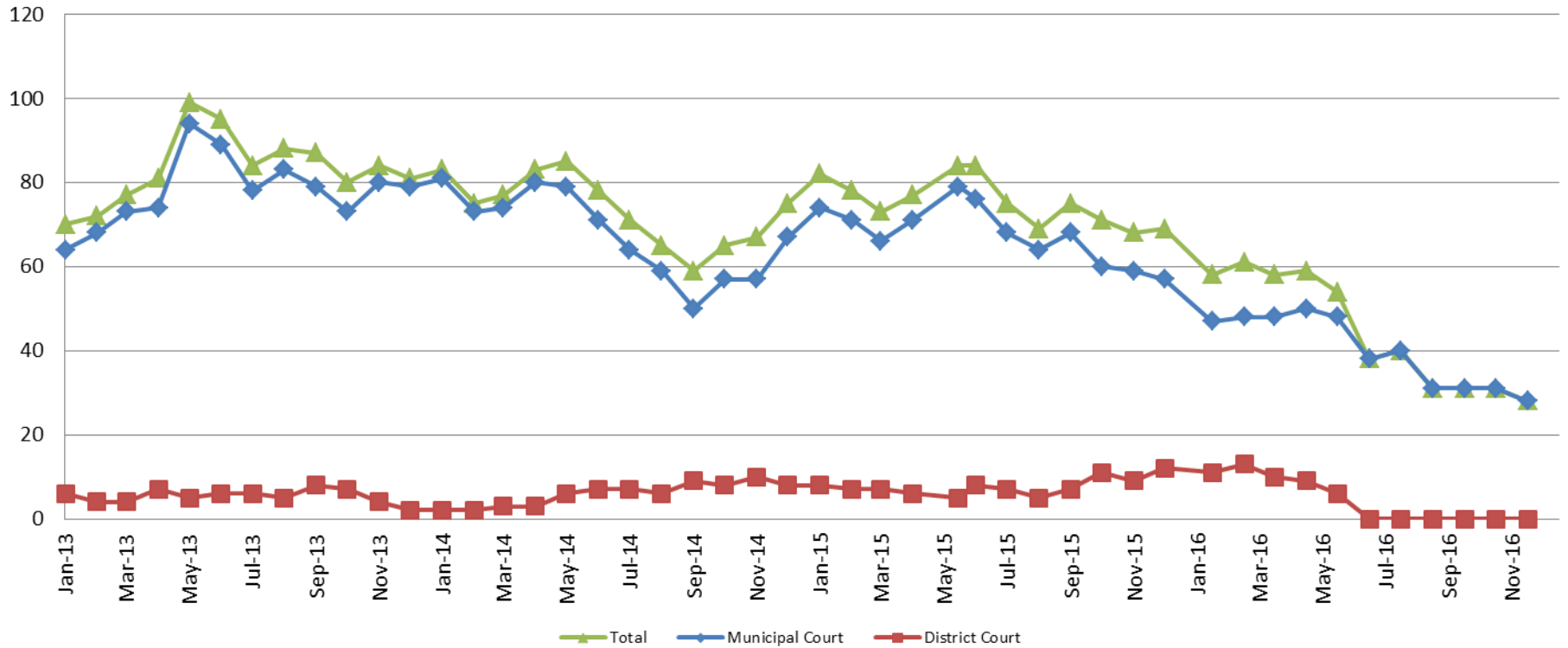
(data obtained from DA's Office & CoW)

Mental Health - ADP 2013 - present



November:	2013	2014	2015	2016
SCOAP	140	129	143	162
CoW – MH Court	94	103	91	122
November YTD Avg.	2013	2014	2015	2016
SCOAP	146	124	145	159
CoW – MH Court	95	98	109	107

Day Reporting - Active Caseload 2013-present

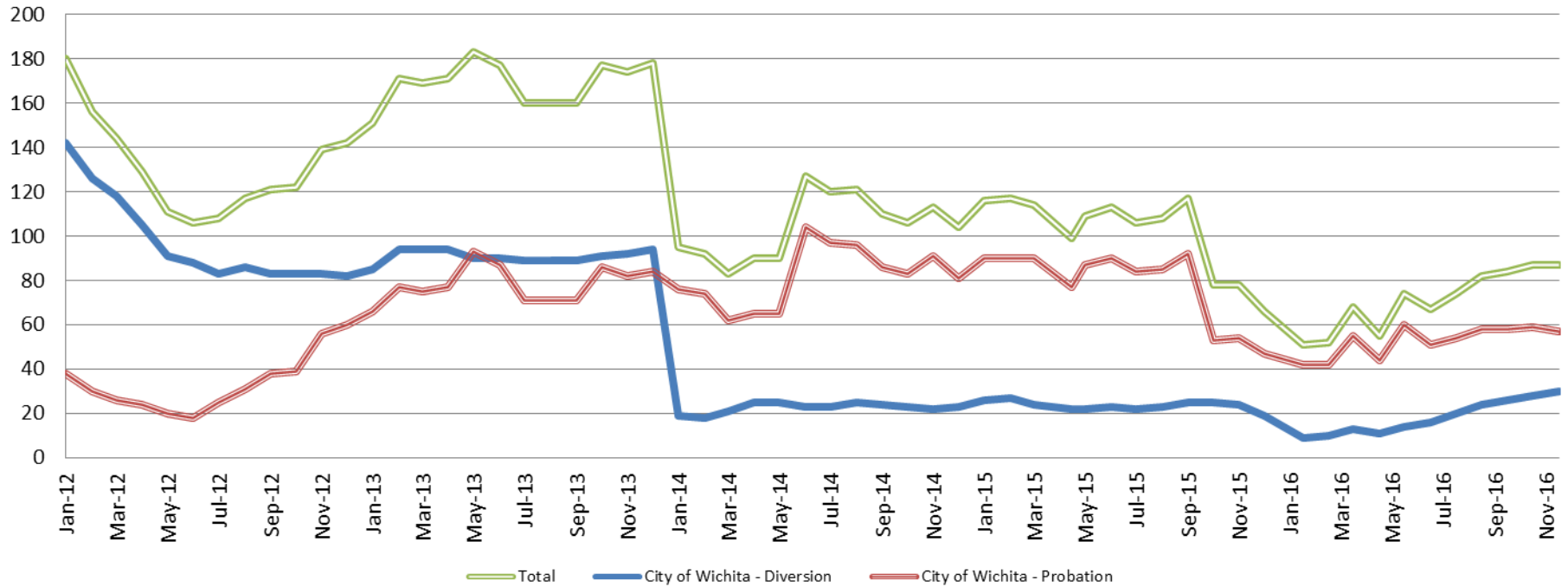


	2013	2014	2015	2016
November				
Municipal Court	80	57	59	28
District Court	4	10	9	0*
TOTAL	84	67	68	28
November YTD Avg.	2013	2014	2015	2016
Municipal Court	78	68	69	40
District Court	6	6	7	4
TOTAL	83	73	76	44



Drug Court - City of Wichita

ADP: 2012 - present



November - CoW Diversion

2013 = 92
 2014 = 22
 2015 = 24
 2016 = 30

November YTD Avg.

2013 = 91
 2014 = 23
 2015 = 24
 2016 = 18

November - CoW Probation

2013 = 82
 2014 = 91
 2015 = 54
 2016 = 57

November YTD Avg.

2013 = 78
 2014 = 82
 2015 = 81
 2016 = 53

November - CoW Total

2013 = 174
 2014 = 113
 2015 = 78
 2016 = 87

November YTD Avg.

2013 = 168
 2014 = 104
 2015 = 105
 2016 = 71

(data obtained from CoW)



Drug Court - Sedgwick County ADP: 2012 - present



November - SG CO

2013 = 98

2014 = 87

2015 = 112

2016 = 105

November YTD Avg.

2013 = 104

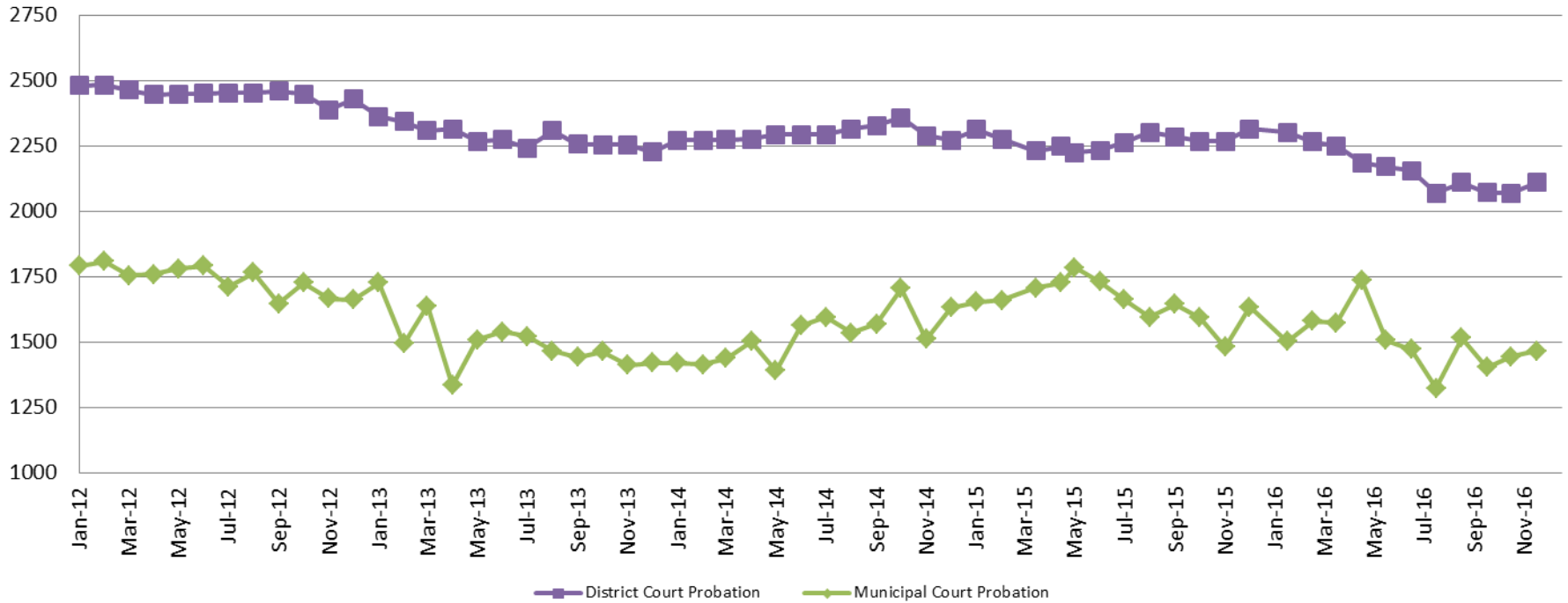
2014 = 96

2015 = 108

2016 = 110



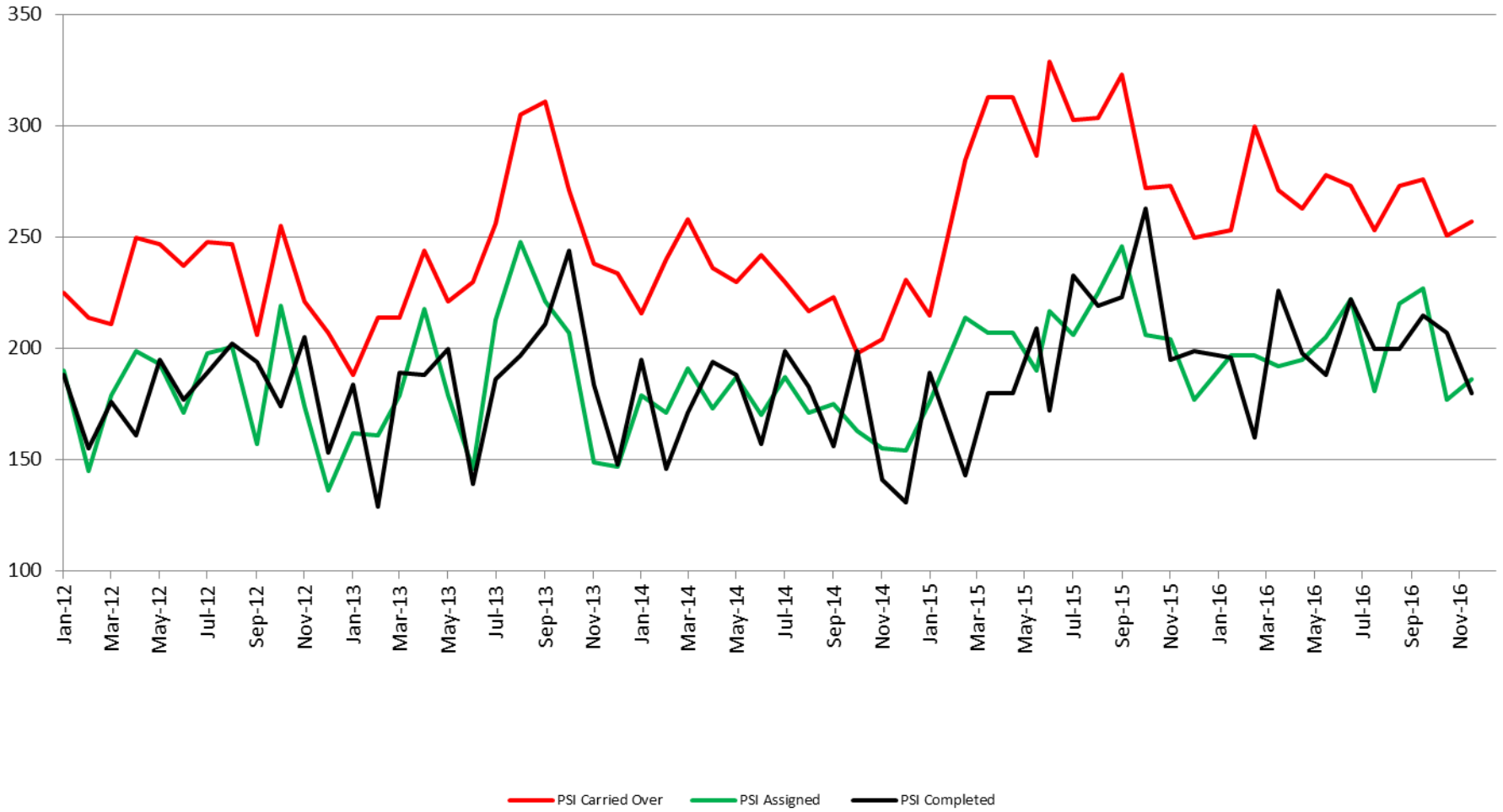
Probation - Active Caseloads 2012 - present



<u>November</u>	<u>2013</u>	<u>2014</u>	<u>2015</u>	<u>2016</u>
District Court	2,254	2,290	2,268	2,110
Municipal Court	1,412	1,511	1,479	1,466
<u>November YTD Avg.</u>	<u>2013</u>	<u>2014</u>	<u>2015</u>	<u>2016</u>
District Court	2,290	2,297	2,264	2,160
Municipal Court	1,503	1,513	1,657	1,502



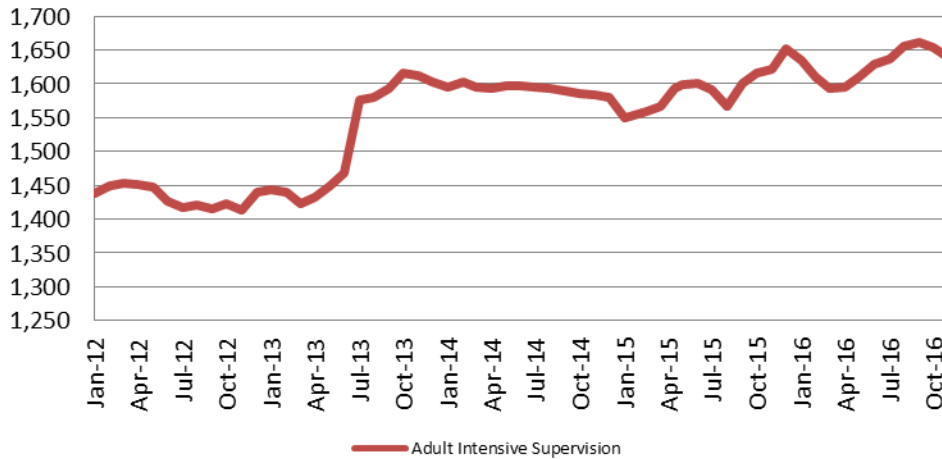
District Court Probation: Pre-Sentence Investigation 2012 - present



(data obtained from District Court)

Community Corrections

**Adult Intensive Supervision Probation (AISP) ADP
2012 - present**



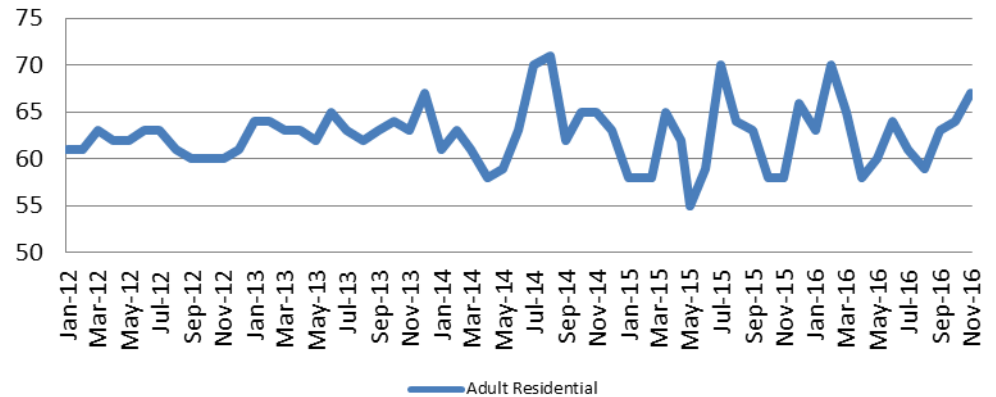
<u>November</u>	<u>November YTD Avg.</u>
2013 = 1,613	2013 = 1,512
2014 = 1,583	2014 = 1,593
2015 = 1,622	2015 = 1,587
2016 = 1,639	2016 = 1,629

(data obtained from SG CO Dept. of Corrections)

*KDOC changed population count to include drug court, residential and AISP beginning July 2013.

**Adult Residential: ADP
2012 - present**

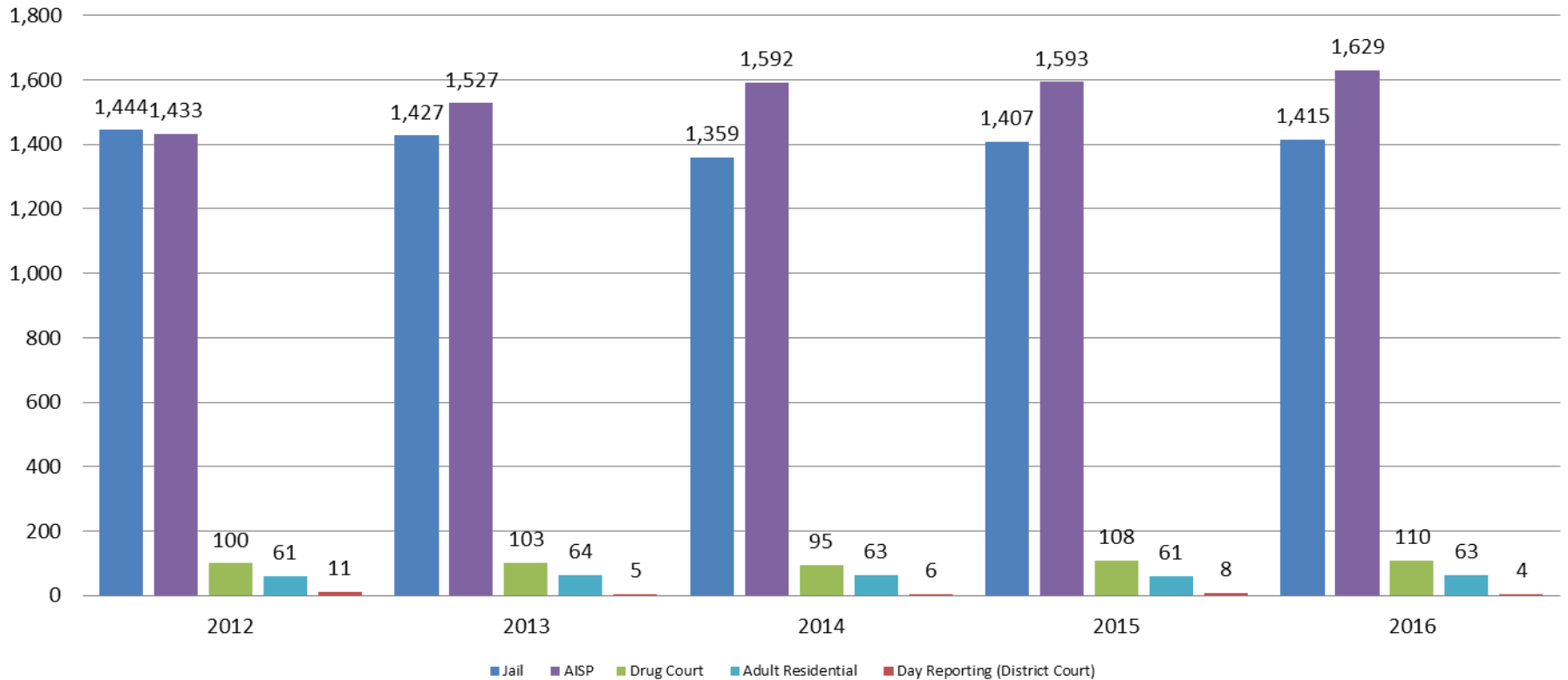
<u>November</u>	<u>November YTD Avg.</u>
2013 = 63	2013 = 63
2014 = 65	2014 = 63
2015 = 58	2015 = 61
2016 = 67	2016 = 63



(data obtained from SG CO Dept. of Corrections)

Correlation: Total & Sedgwick County Programs (Adult)

Total Annual ADP: 2012 - Present



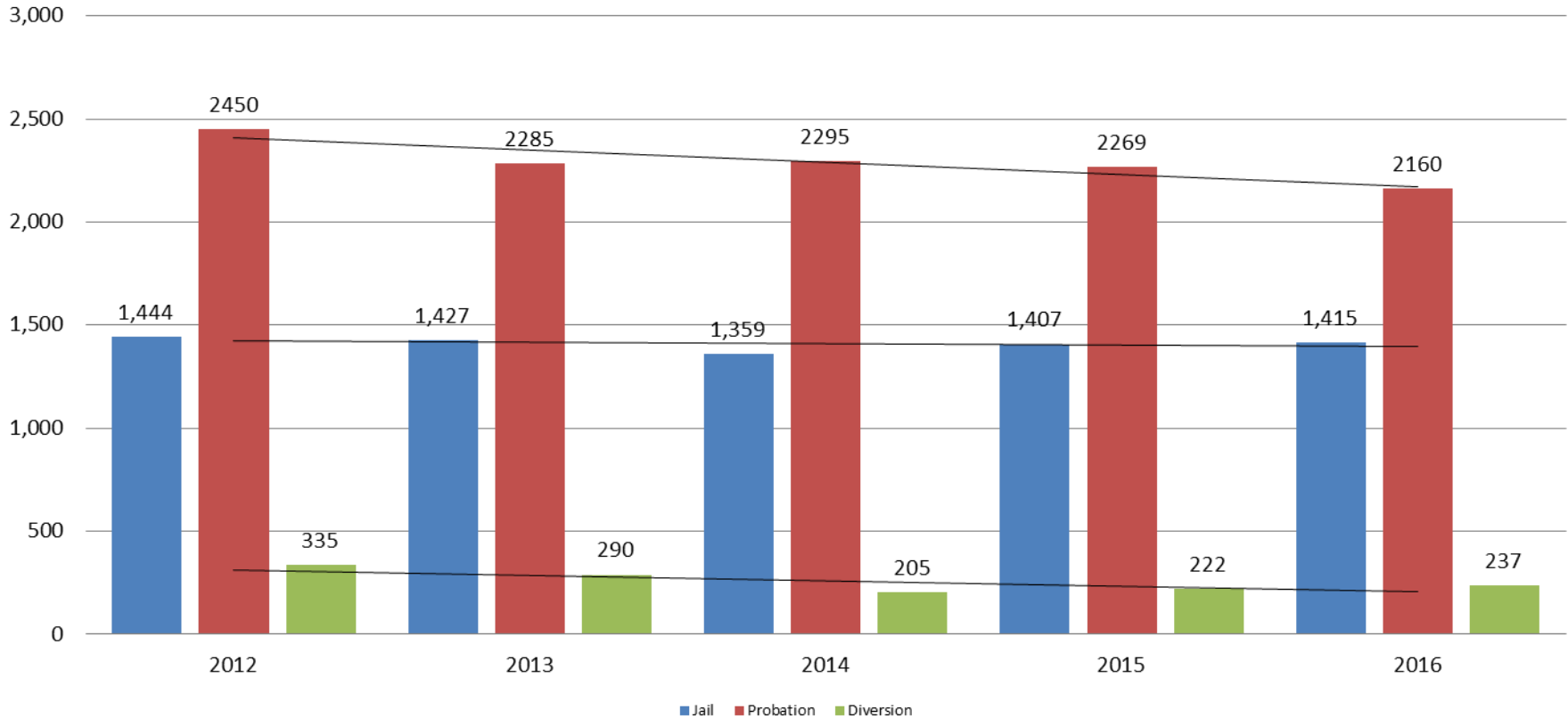
Jail includes individuals in booking, detention, work release and out-of county (combined)

(data obtained from detention facility, SG Dept. of Corrections, Pretrial Services, & CoW)



Correlation: Total & District Court Programs

Total Annual ADP: 2012 - Present

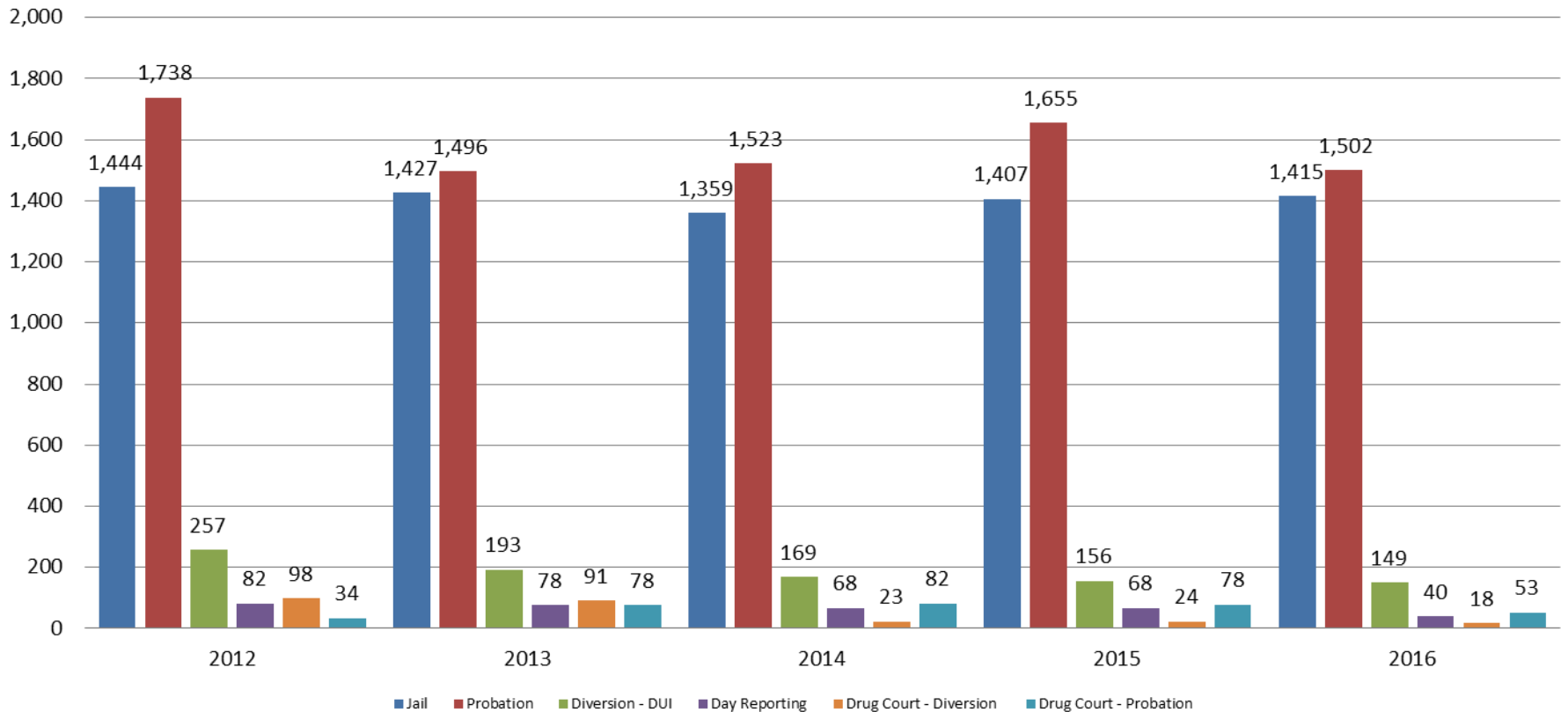


Jail includes individuals in booking, detention, work release and out-of county (combined)



Correlation: Total & City of Wichita / Municipal Court Programs

Total Annual ADP: 2012 - present

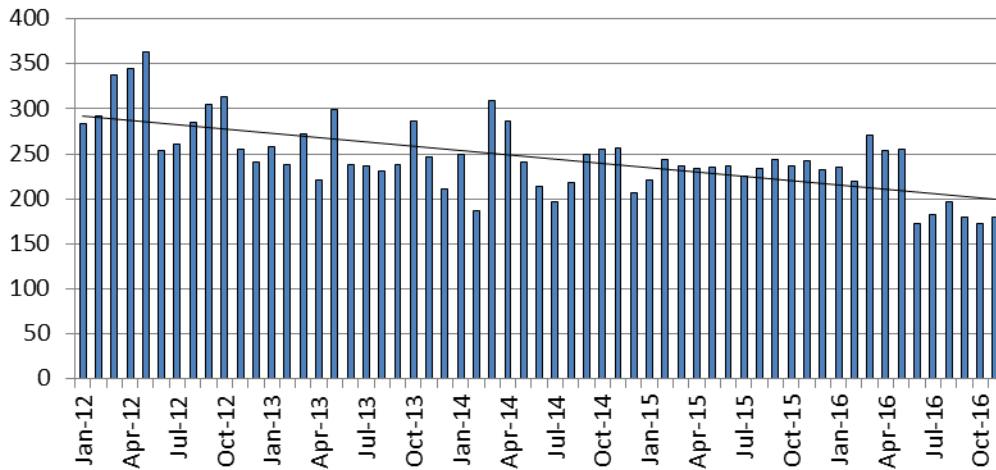


Jail includes individuals in booking, detention, work release and out-of county (combined)



Juvenile

JIAC Intakes: 2012 - present



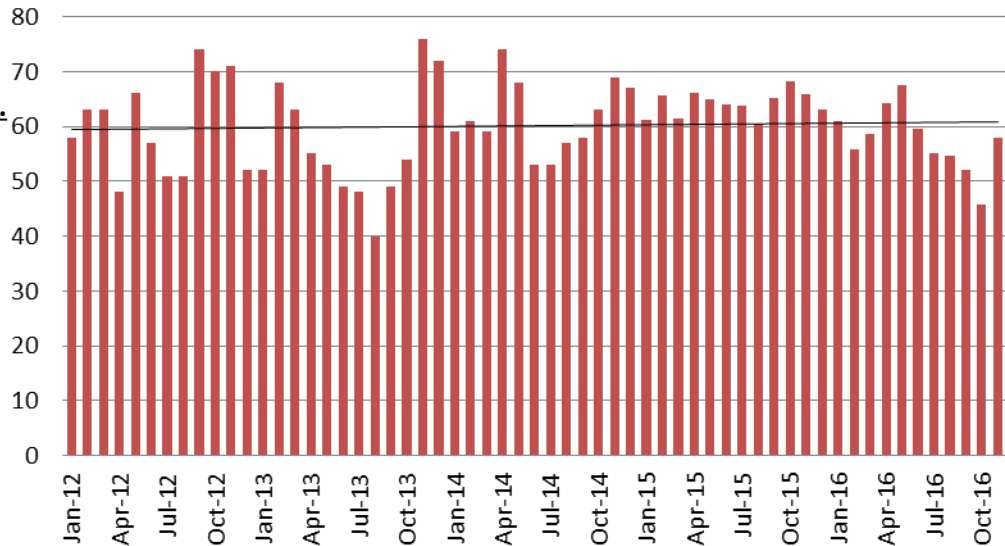
November	November YTD Average
2013 = 246	2013 = 251
2014 = 256	2014 = 242
2015 = 242	2015 = 235
2016 = 180	2016 = 211

(data obtained from SG CO Dept. of Corrections)

JDF ADP: 2012 - present

November	November YTD Avg.
2013 = 76	2013 = 55
2014 = 69	2014 = 61
2015 = 68	2015 = 64
2016 = 58	2016 = 57

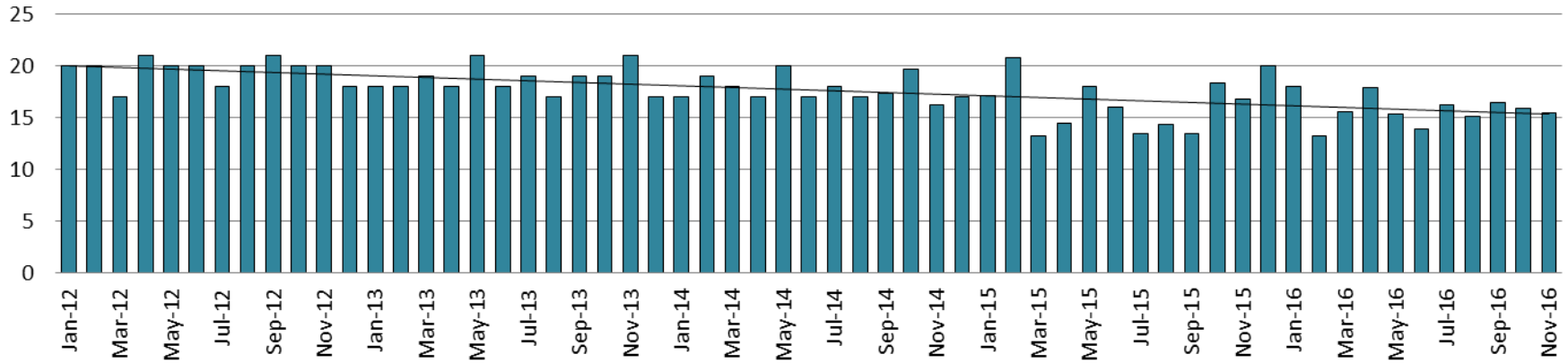
(data obtained from SG CO Dept. of Corrections)



Juvenile Detention Alternatives

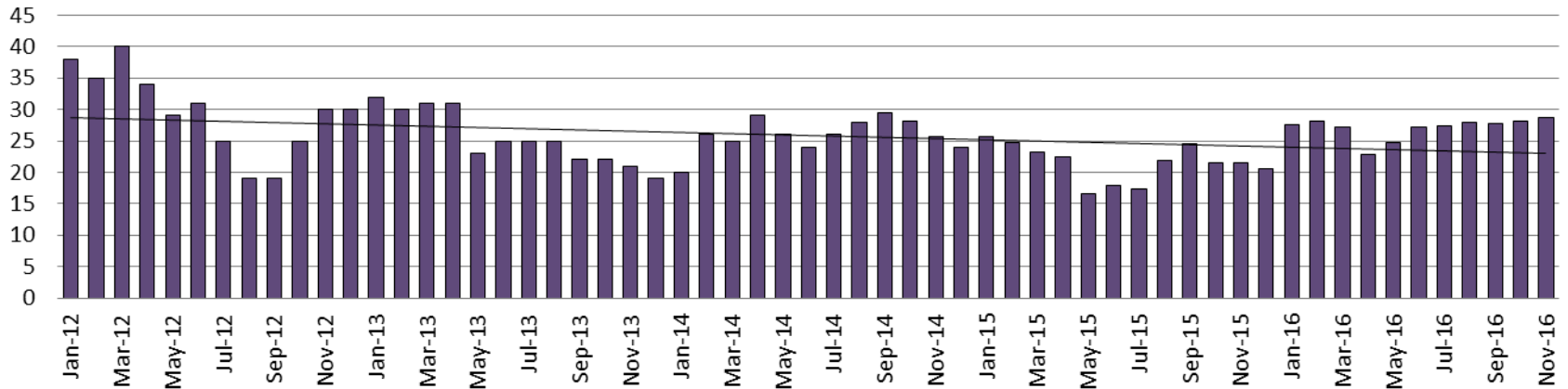
Juvenile Residential Facility (JRF)

ADP: 2012 - present



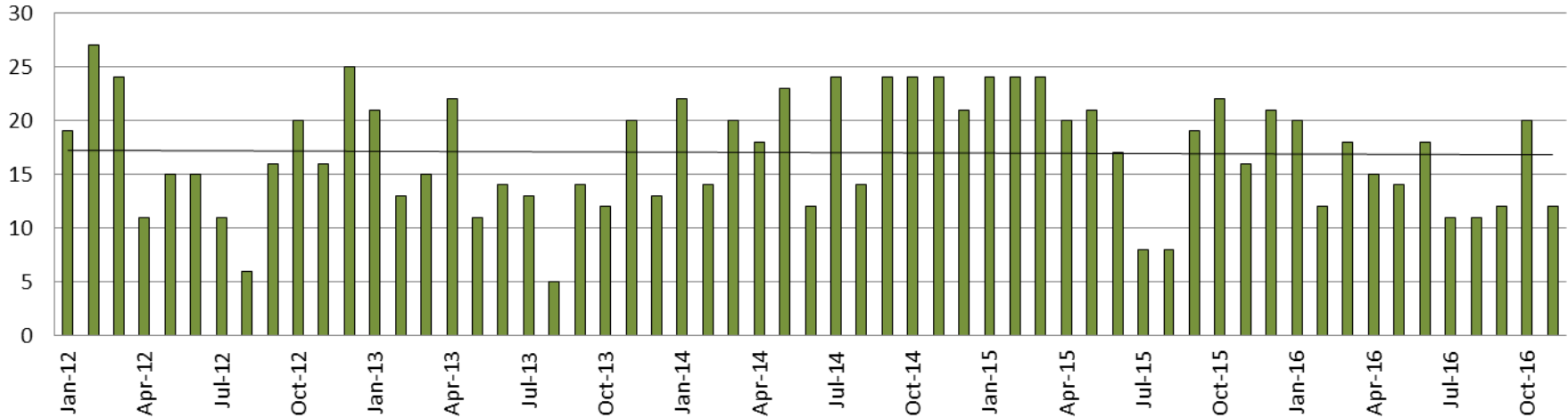
Home-Based Supervision

ADP: 2012 - present

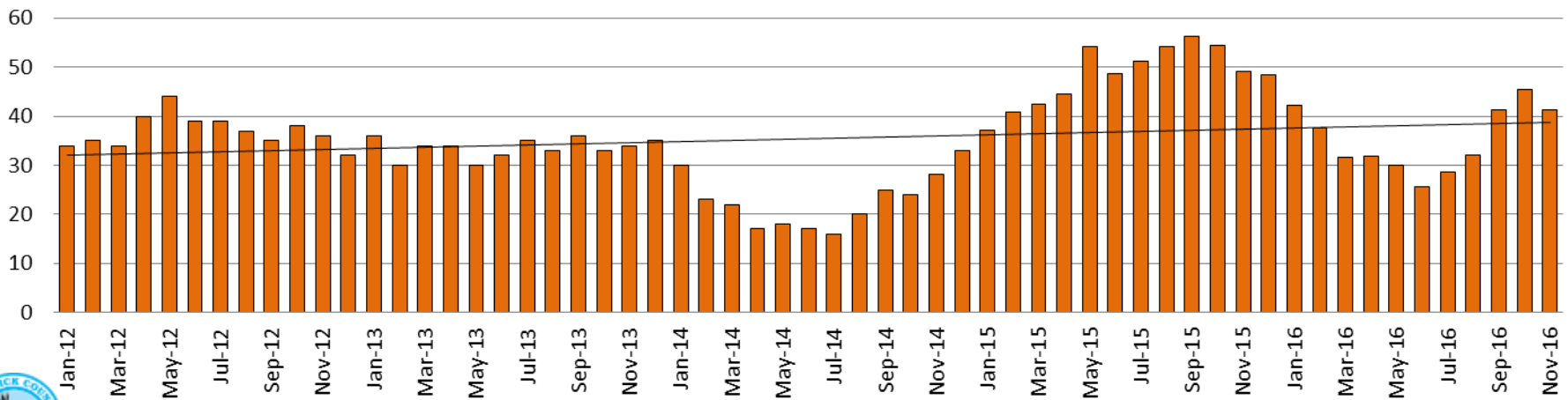


Juvenile Detention Alternatives

Weekend Alternative Detention Program 2012 - present



Detention Advocacy Case Management Services ADP: 2012 - present



Juvenile Detention Services

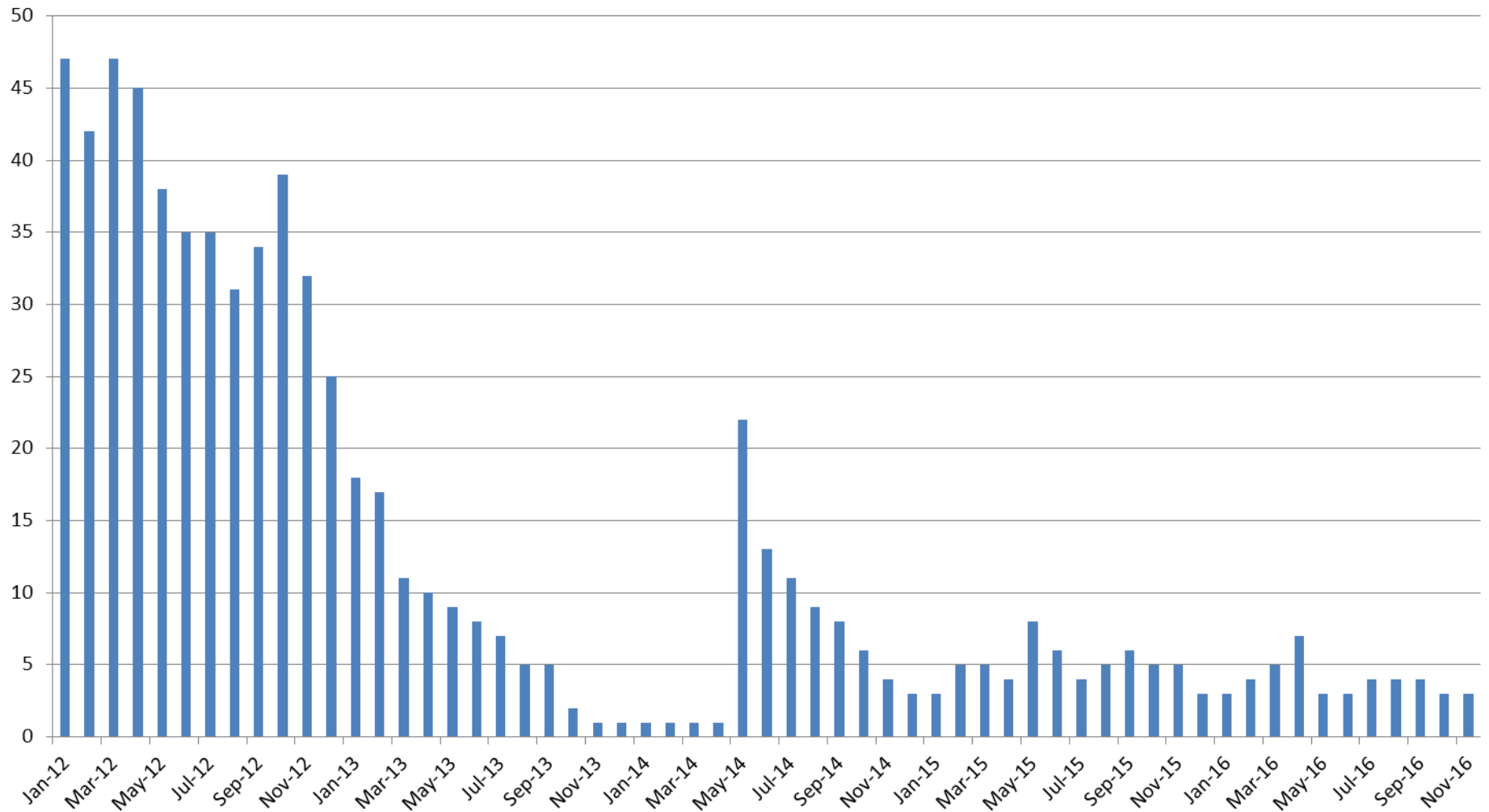
November ADP	2013	2014	2015	2016
Juvenile Detention Facility	76	69	66	58
Juvenile Residential Facility	21	16	17	15
Home Based Supervision	21	26	21	29
Detention Advocacy Case Management Services	34	28	49	41
Weekend Alternative Detention Program (total)	20	24	16	12

November YTD AVERAGE	2013	2014	2015	2016
Juvenile Detention Facility	55	61	64	57
Juvenile Residential Facility	19	18	16	16
Home Based Supervision	26	26	22	27
Detention Advocacy Case Management Services	33	22	48	35
Weekend Alternative Detention Program	15	20	18	15



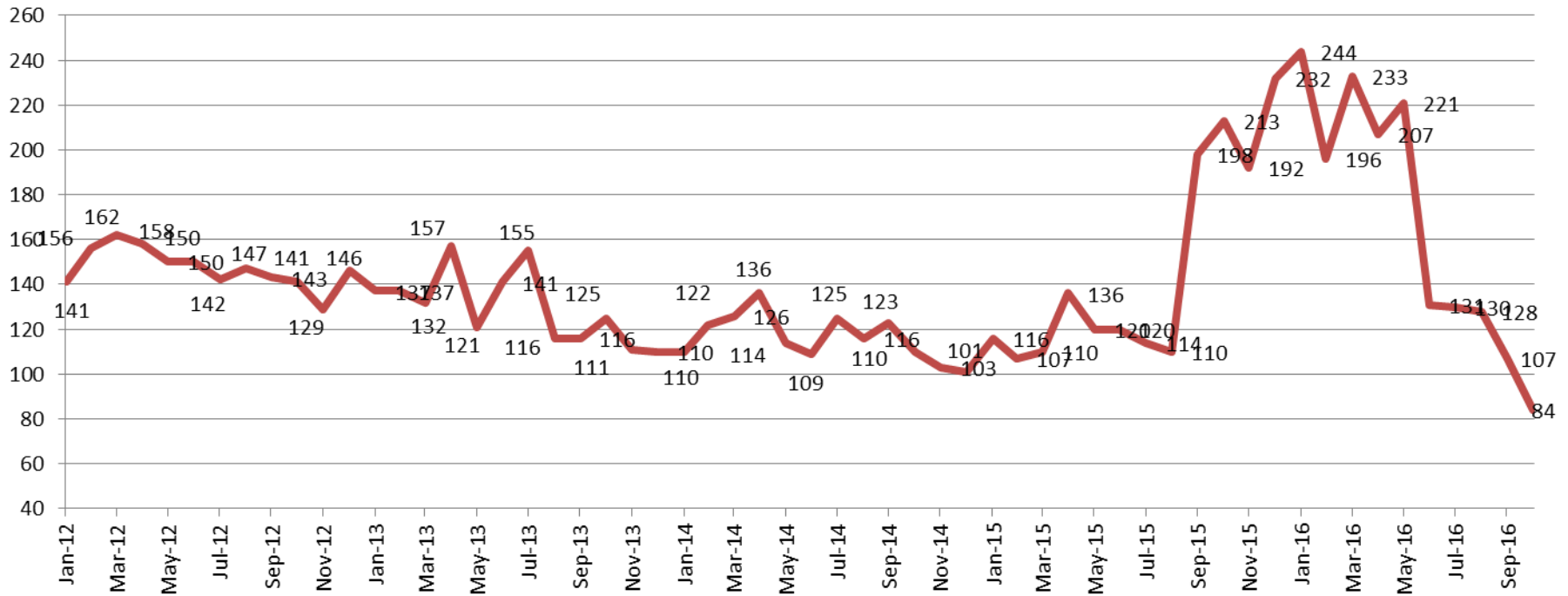
Monthly Jail Snapshot: November 30, 2016

BICE Holds 2012-Present



Monthly Jail Snapshot: November 30, 2016

Felony Commitments: February 2012 - present

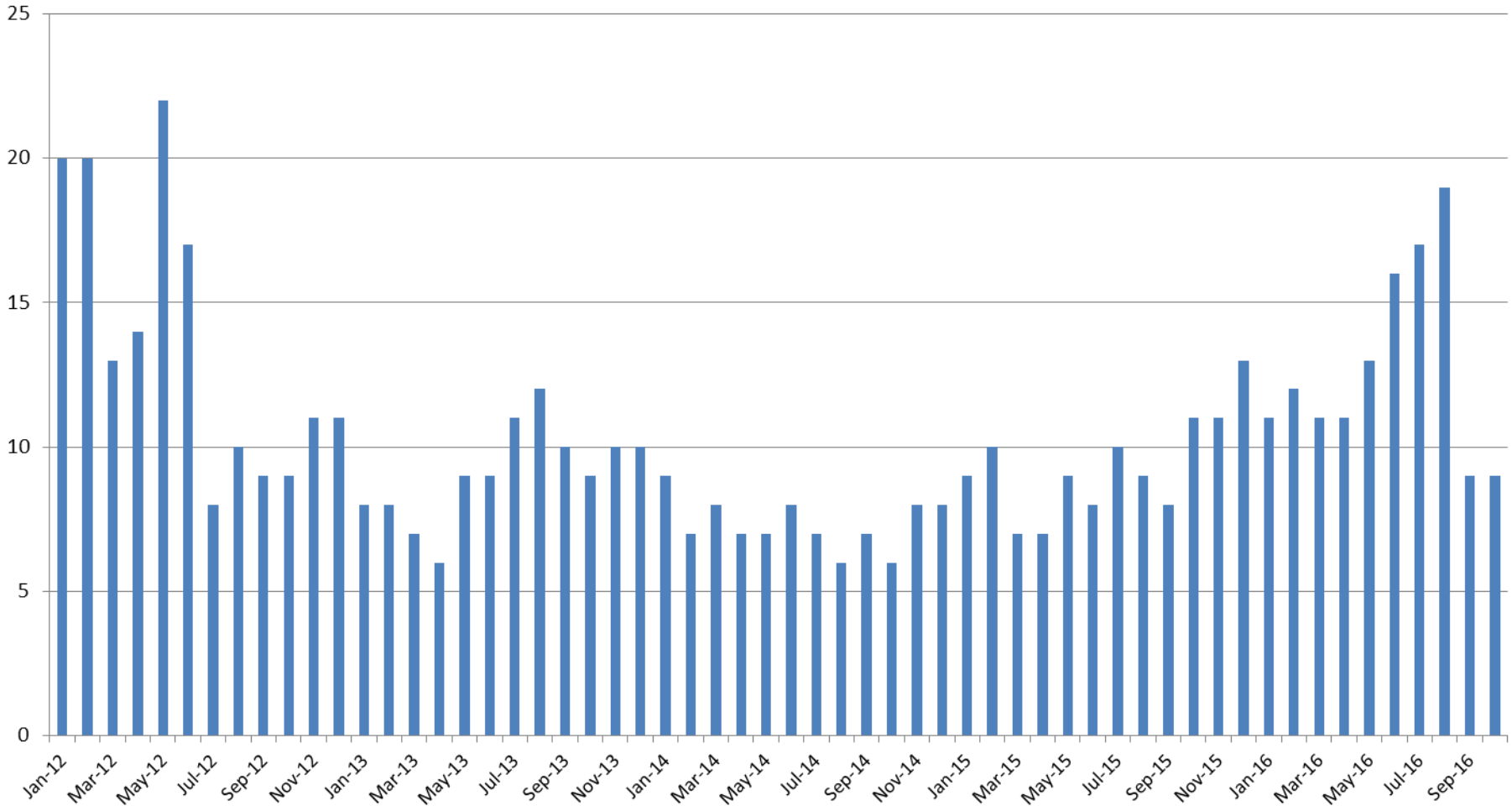


November:

2012 = 141 2015 = 213
 2013 = 125 2016 = 84
 2014 = 110

(data obtained from SG CO DIO)

Journal Entry Completion (Average Days) January 2013-Present



This data is always reported a month behind

