

Criminal Justice Coordinating Council

Population Report & Program Trends

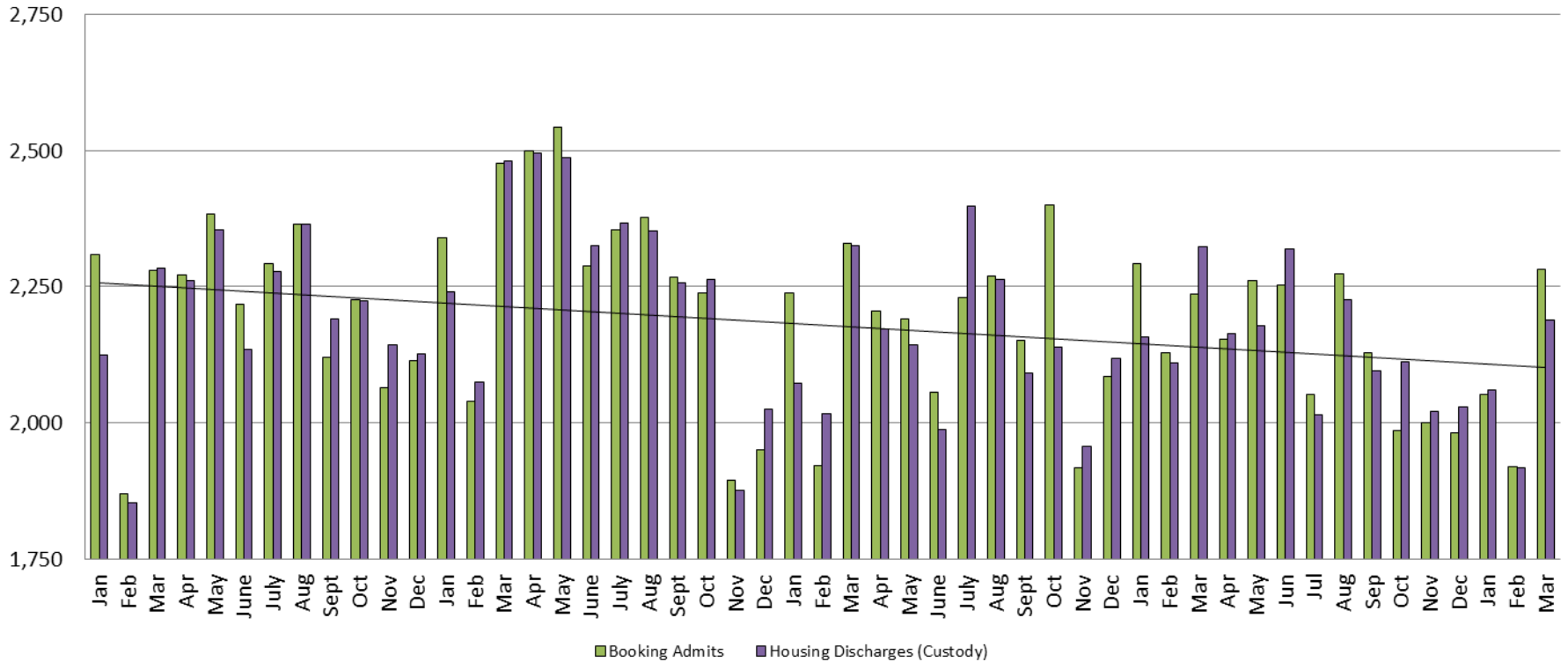
April 2017



Sedgwick County...
working for you

Detention Facility

Booking Admits & Housing Discharges from Custody January 2013 - Present



Housing Discharges for March

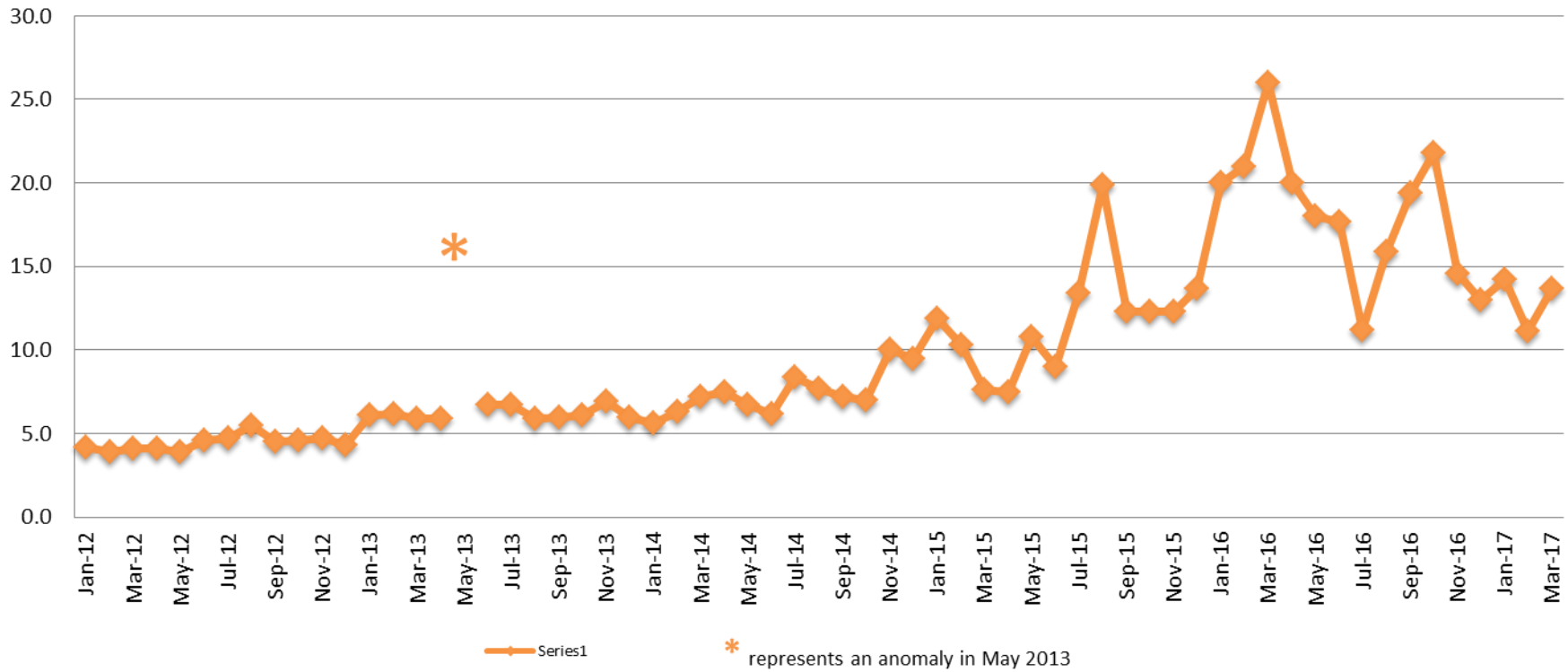
2015 = 2,326
 2016 = 2,324
 2017 = 2,189

Bookings for March

2015 = 2,329
 2016 = 2,236
 2017 = 2,282



Average Length of Stay: Booking (Hours) January 2012 - Present



March

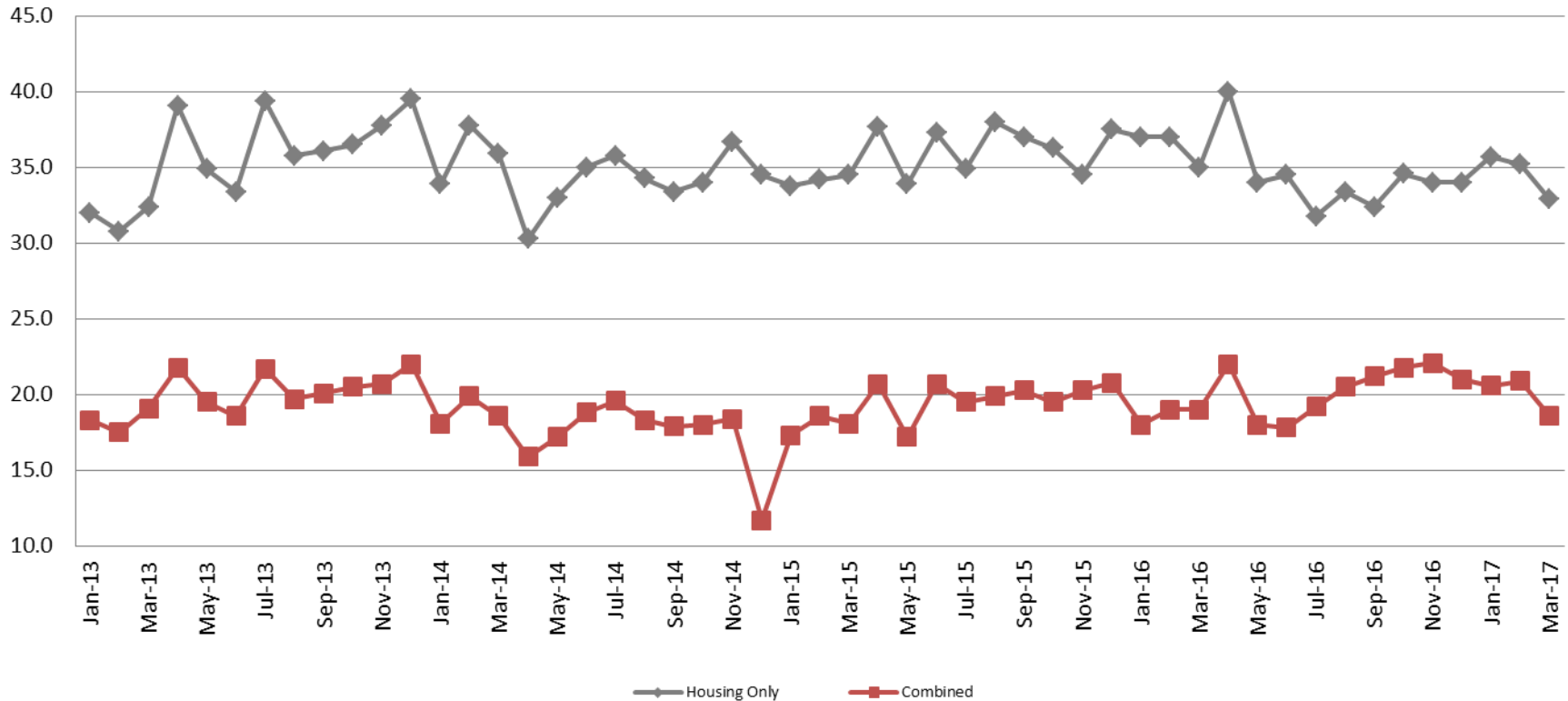
2012 = 4.1	2015 = 7.6
2013 = 5.9	2016 = 26.0
2014 = 7.2	2017 = 13.7

March YTD Avg.

2012 = 4.1	2015 = 9.9
2013 = 6.1	2016 = 22.3
2014 = 6.4	2017 = 13.0



Average Length of Stay: Housing & Combined (Days) January 2013 - Present



March Housing

2013 = 32.4
 2014 = 35.9
 2015 = 34.5
 2016 = 35.0
 2017 = 32.9

March Housing YTD Avg.

2013 = 31.7
 2014 = 35.9
 2015 = 34.2
 2016 = 36.3
 2017 = 34.6

March Combined

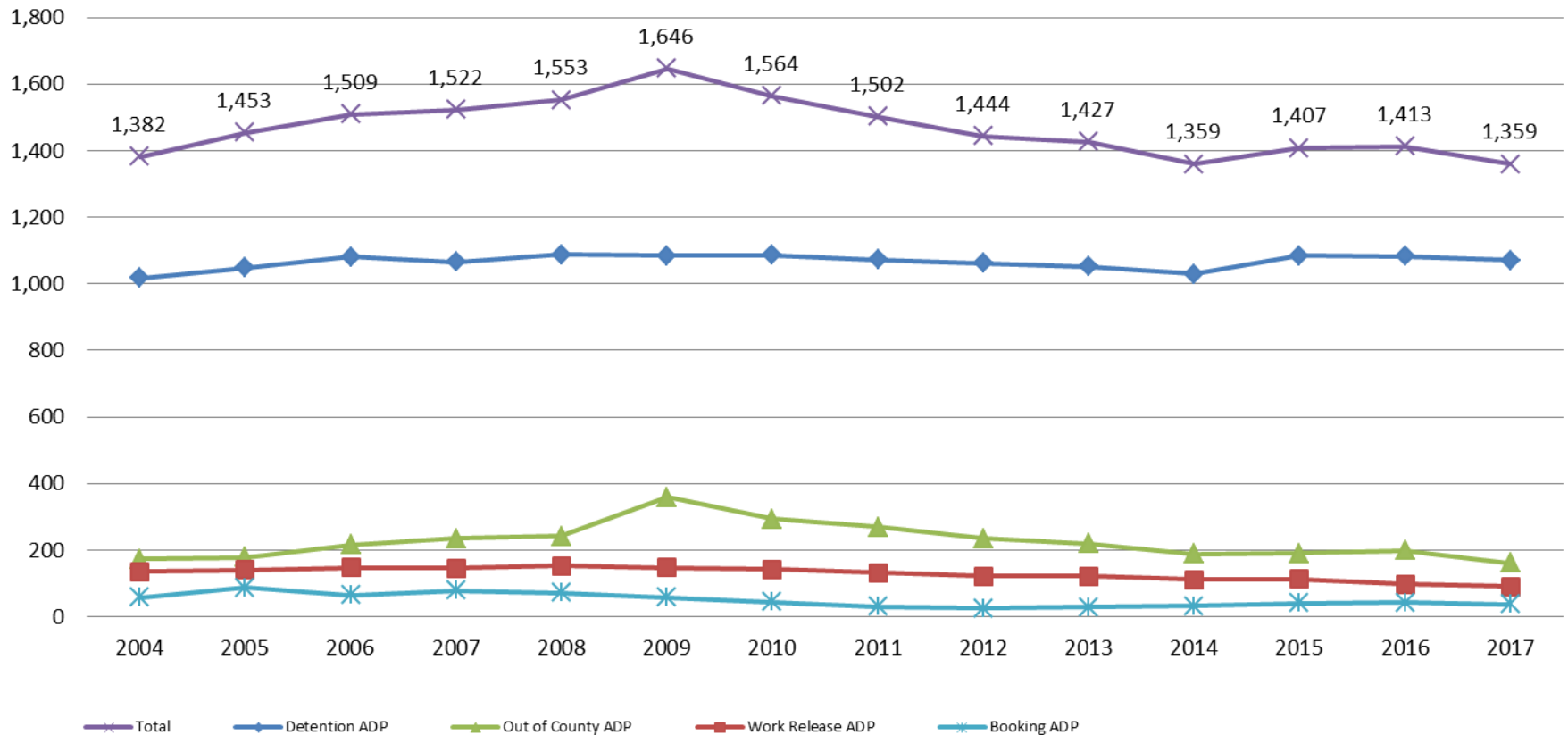
2013 = 19.1
 2014 = 18.6
 2015 = 18.1
 2016 = 19.0
 2017 = 18.6

March Combined YTD Avg.

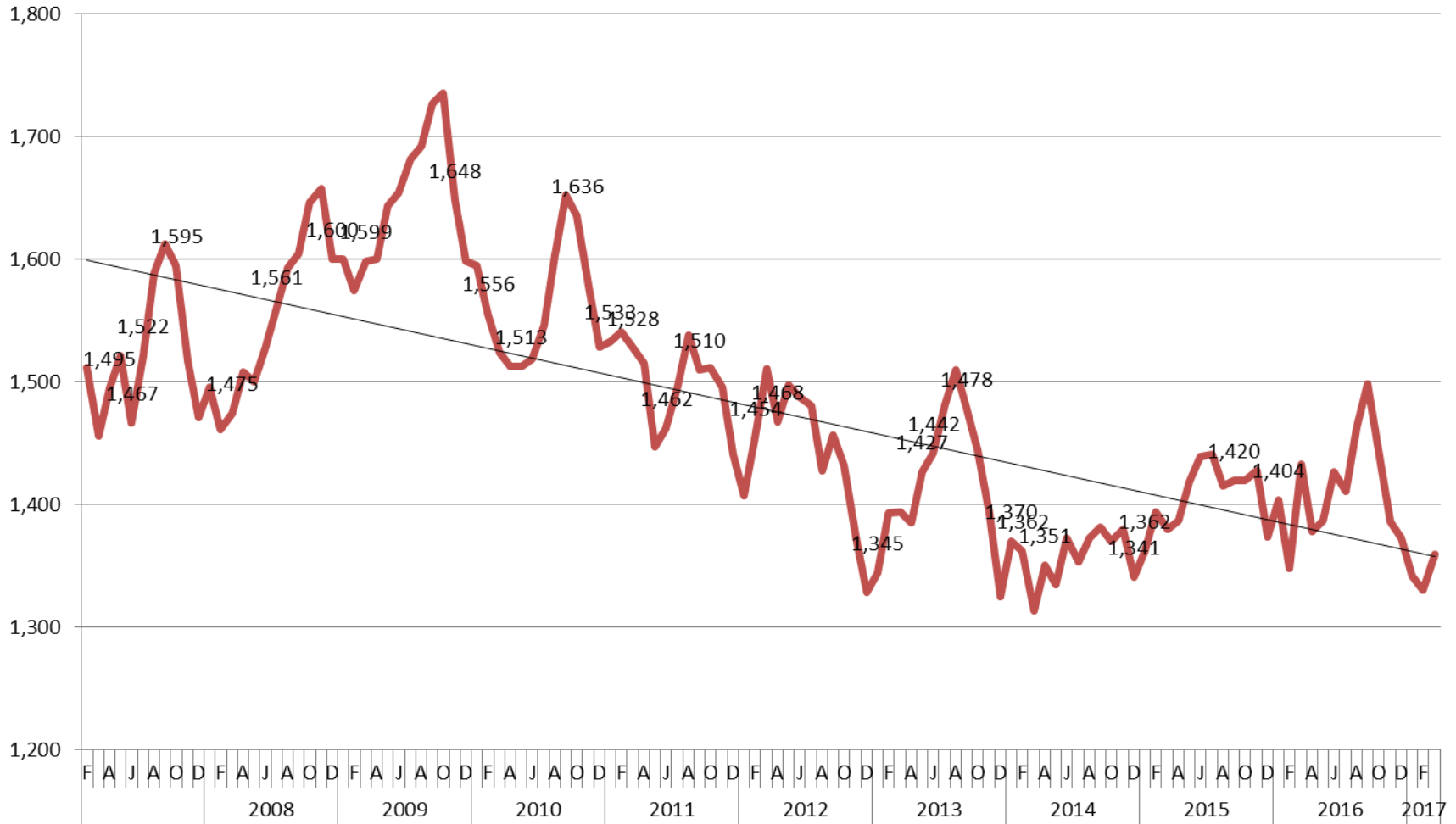
2013 = 18.3
 2014 = 18.9
 2015 = 18.0
 2016 = 18.7
 2017 = 20.0

Jail: Annual Average Daily Population (ADP)

TRENDS: Booking, Detention, Work Release, & Out of County
Annual ADP: 2004 - present



TOTAL MONTHLY ADP: JAIL (Booking, Detention Facility, Work Release, & Out of County) 2007 - present



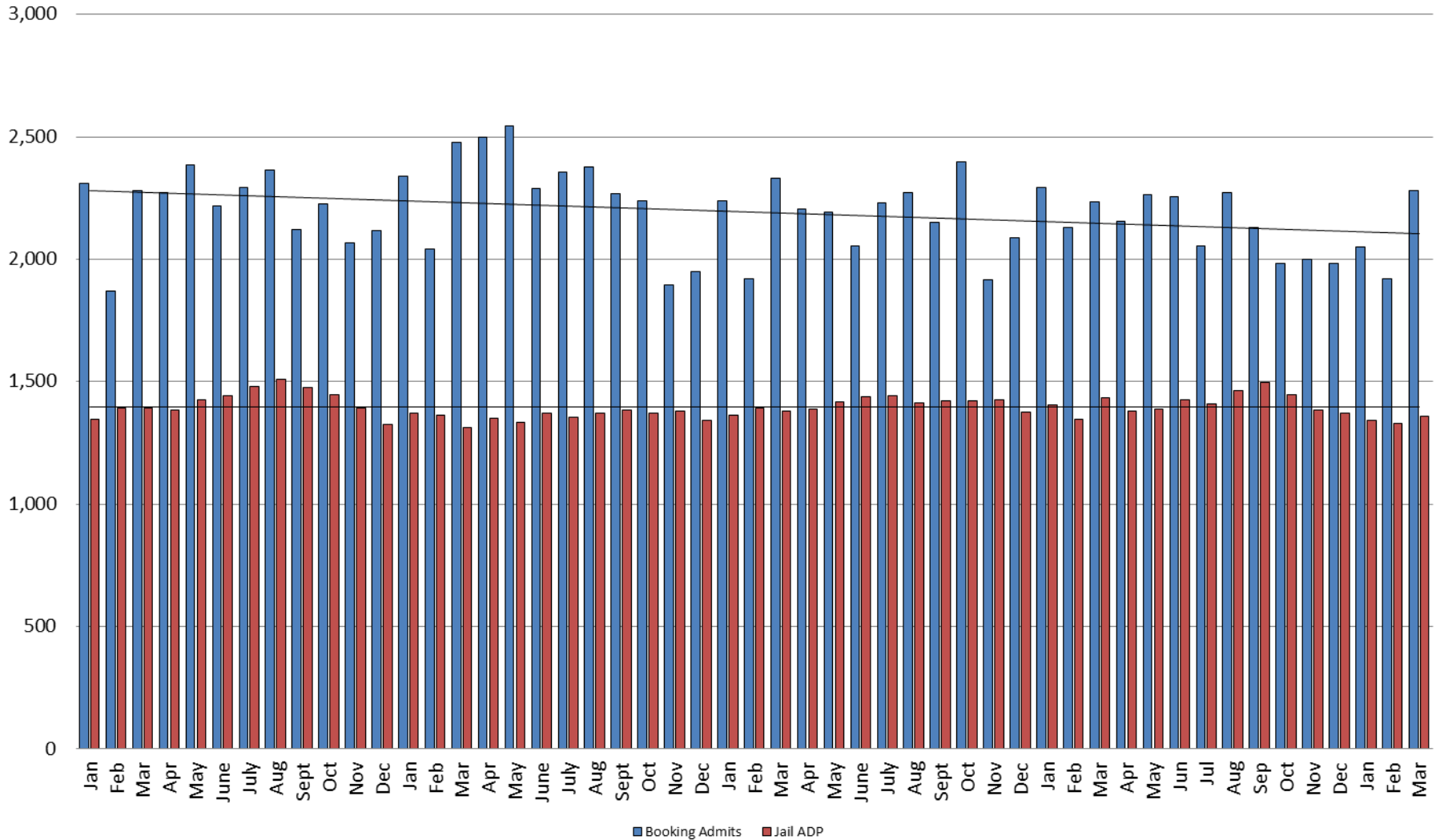
This slide shows total monthly ADP for individuals in booking, detention, work release and out-of county (combined)

(data obtained from detention facility)



Sedgwick County...
working for you

Booking Admits & Total Monthly ADP (Jail): 2013 - present



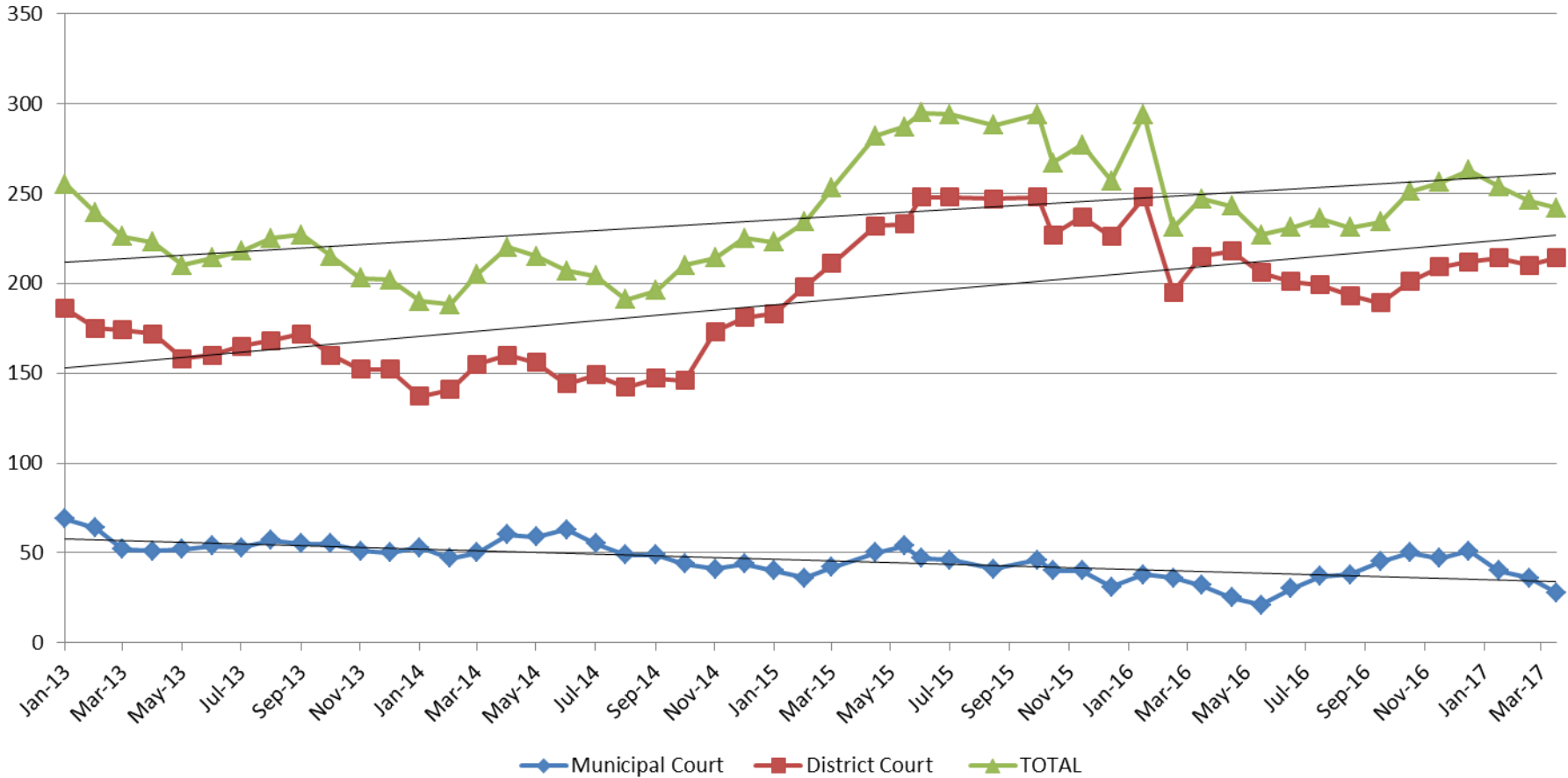
Jail includes individuals in booking, detention, work release and out-of county (combined)

(data obtained from detention facility)



Sedgwick County...
working for you

Pretrial Services Program (PSP) Monthly ADP: January 2013 - Present

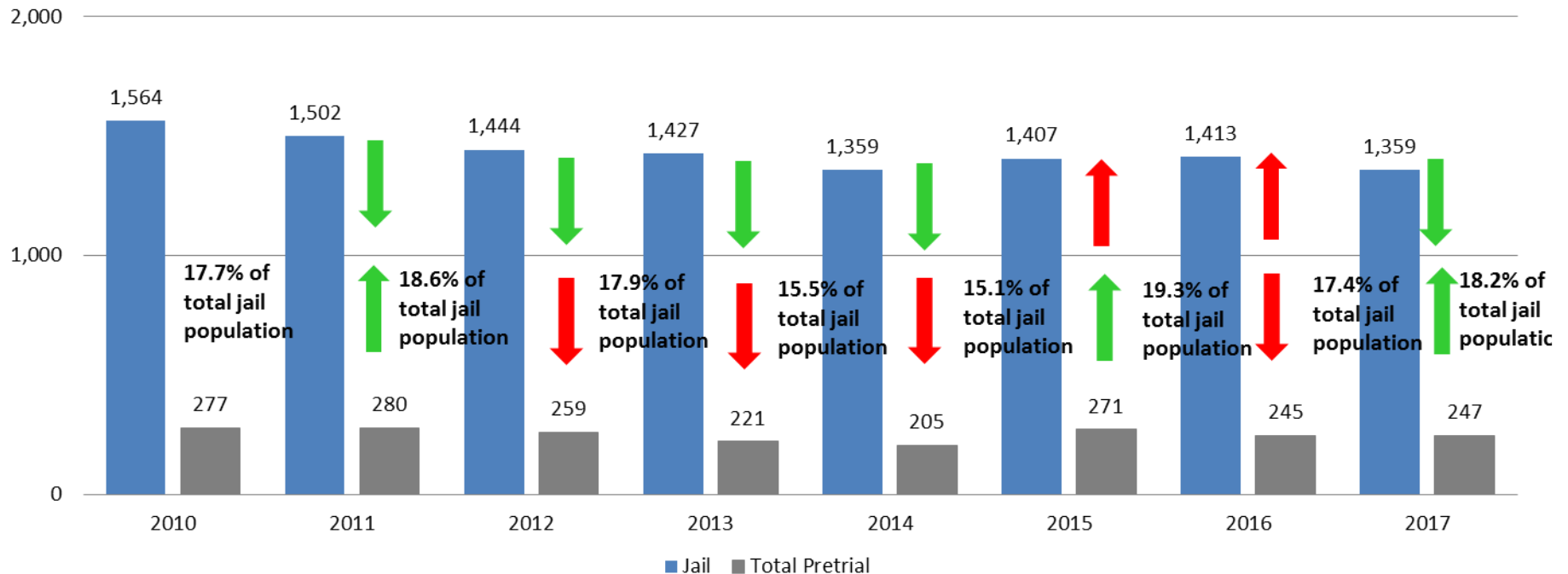


March	2013	2014	2015	2016	2017
Municipal Court	52	50	42	32	28
District Court	174	155	211	215	214
TOTAL	226	205	253	247	242

March YTD Avg.	2013	2014	2015	2016	2017
Municipal Court	62	50	39	35	35
District Court	178	144	197	219	213
TOTAL	240	194	237	257	247

Correlation: Total & PSP

Total Annual ADP: 2010 - Present



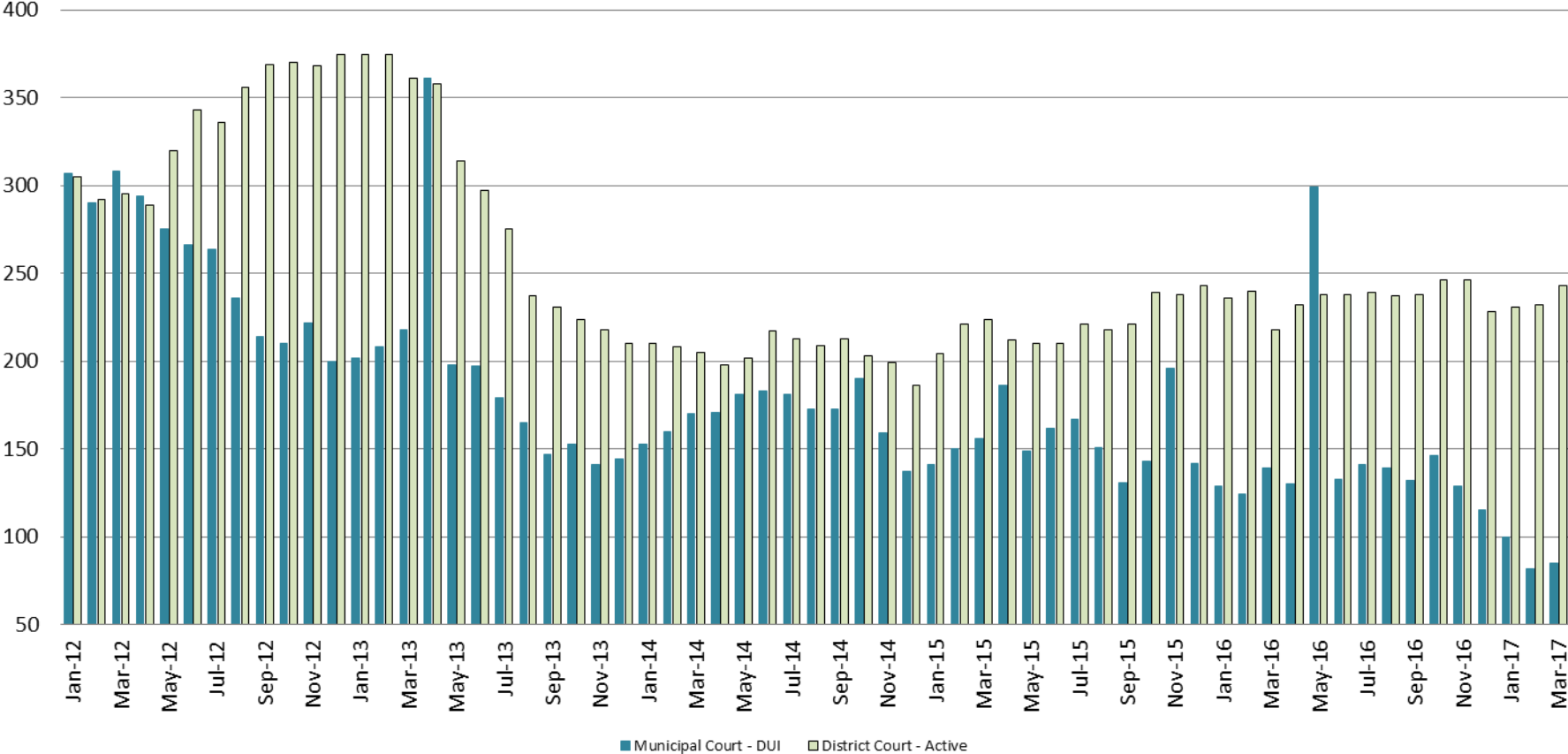
Arrows represent the overall increase/decrease of the population from year to year

Jail includes individuals in booking, detention, work release and out-of county (combined)



Diversion - Active Caseload

January 2012 - Present



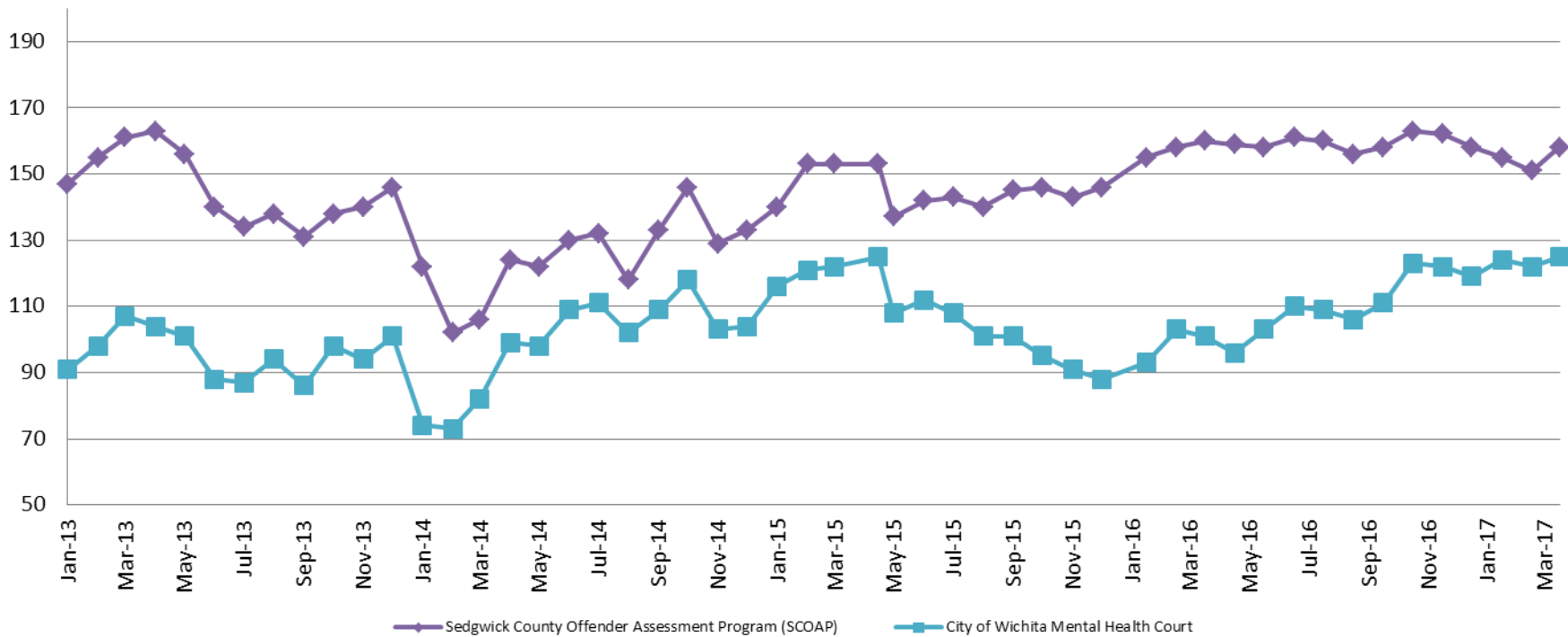
March	2013	2014	2015	2016	2017
Municipal Court- DUI	218	170	156	139	85
District Court- Active	361	205	224	218	243

March YTD Avg.	2013	2014	2015	2016	2017
Municipal Court	209	161	149	131	89
District Court	370	208	216	231	235



(data obtained from DA's Office & CoW)

Mental Health - ADP 2013 - present

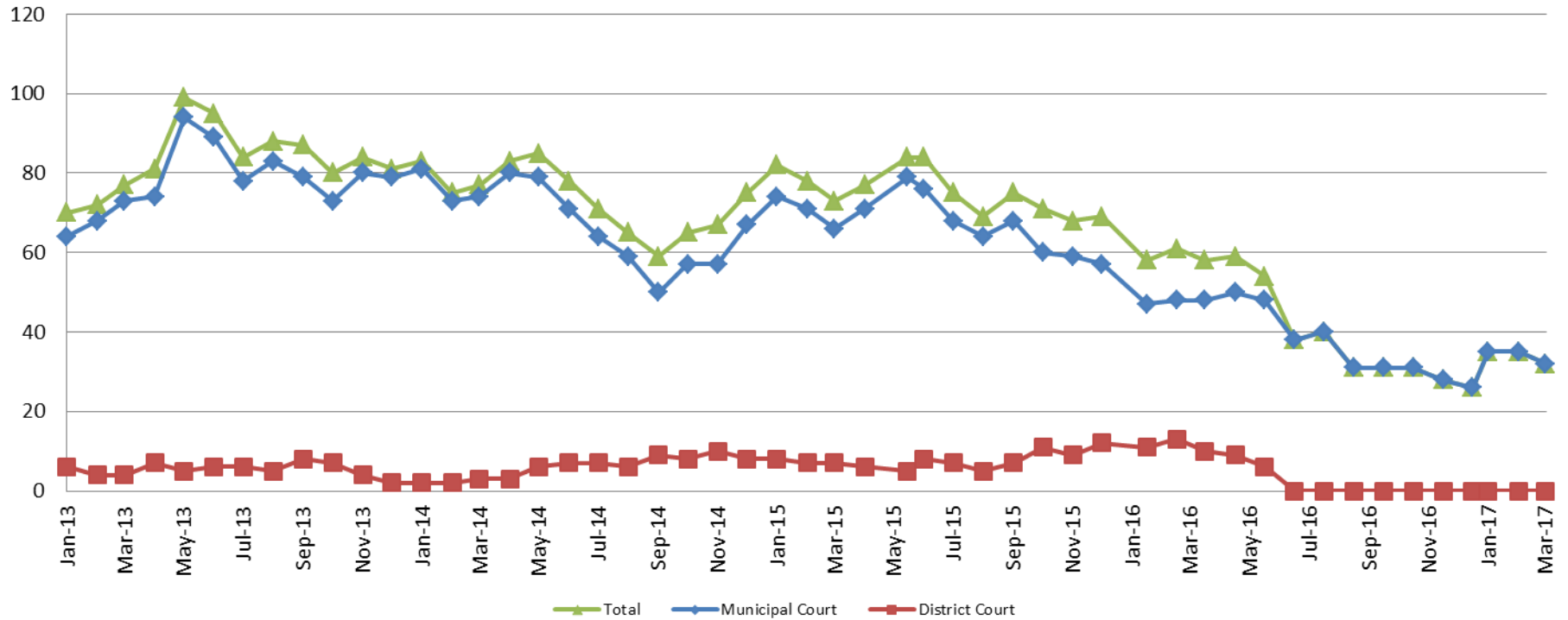


March:	2013	2014	2015	2016	2017
SCOAP	161	106	153	160	158
CoW – MH Court	107	82	122	101	125
March YTD Avg.	2013	2014	2015	2016	2017
SCOAP	154	110	149	158	155
CoW – MH Court	99	76	120	99	124

(data obtained from COMCARE)



Day Reporting - Active Caseload 2013-present

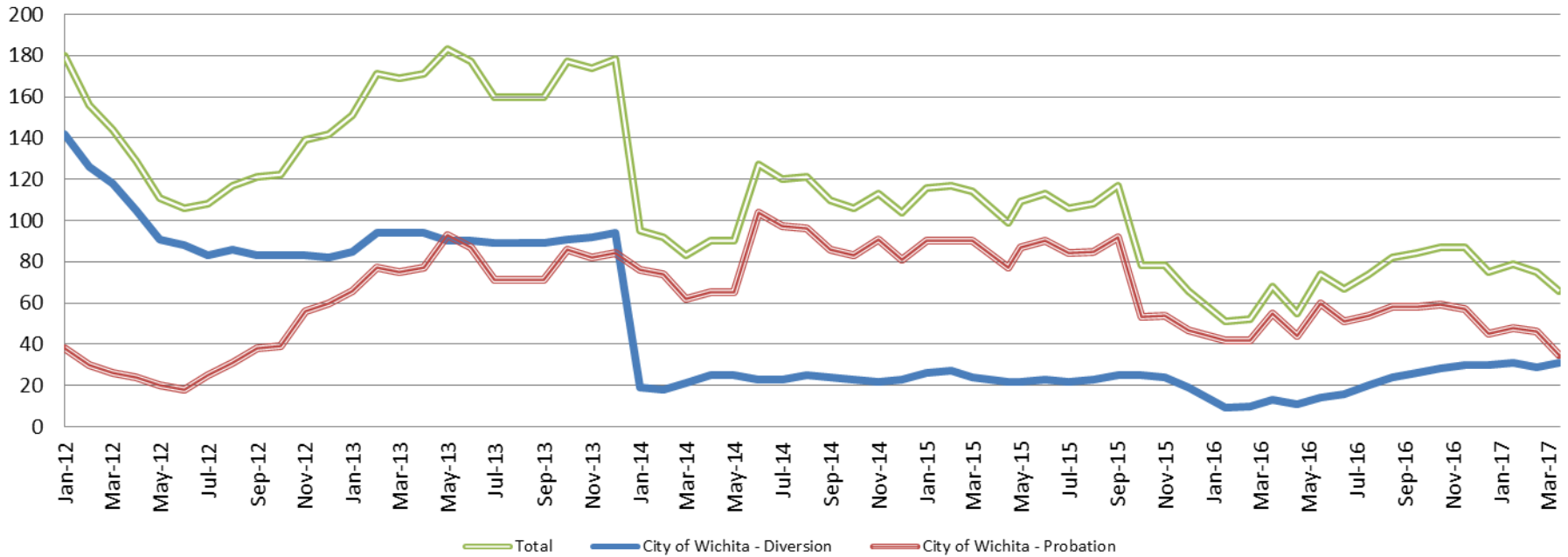


March	2013	2014	2015	2016	2017
Municipal Court	73	74	66	48	32
District Court	4	3	7	10	0*
TOTAL	77	77	73	58	32
March YTD Avg.	2013	2014	2015	2016	2017
Municipal Court	68	76	70	48	34
District Court	5	2	7	11	0*
TOTAL	73	78	78	59	34



Drug Court - City of Wichita

ADP: 2012 - present



March - CoW Diversion

2013 = 94
 2014 = 21
 2015 = 24
 2016 = 13
 2017 = 31

March YTD Avg.

2013 = 91
 2014 = 19
 2015 = 26
 2016 = 11
 2017 = 30

March - CoW Probation

2013 = 75
 2014 = 62
 2015 = 90
 2016 = 55
 2017 = 35

March YTD Avg.

2013 = 73
 2014 = 71
 2015 = 90
 2016 = 46
 2017 = 43

March - CoW Total

2013 = 169
 2014 = 83
 2015 = 114
 2016 = 68
 2017 = 66

March YTD Avg.

2013 = 164
 2014 = 90
 2015 = 116
 2016 = 57
 2017 = 73

(data obtained from CoW)



Sedgwick County...
 working for you

Drug Court - Sedgwick County ADP: 2012 - present



March - SG CO

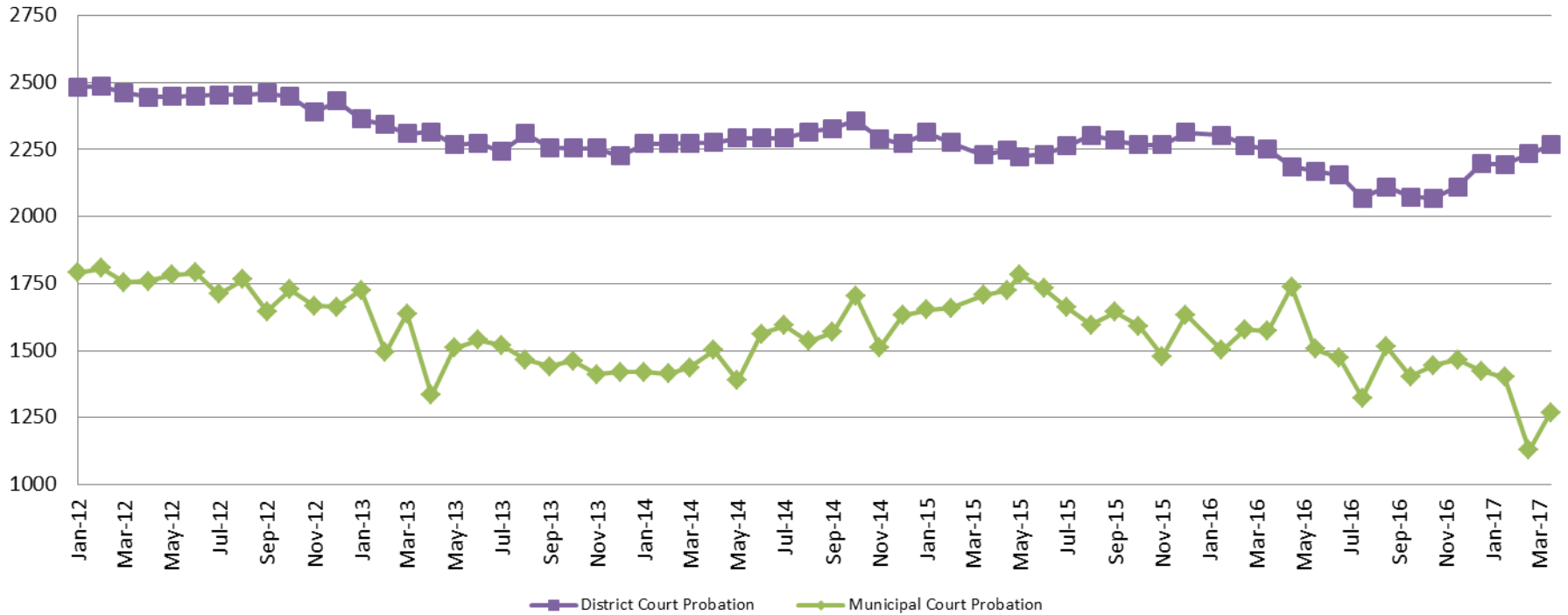
2013 = 105
2014 = 102
2015 = 102
2016 = 110
2017 = 100

March YTD Avg.

2013 = 102
2014 = 100
2015 = 98
2016 = 108
2017 = 99



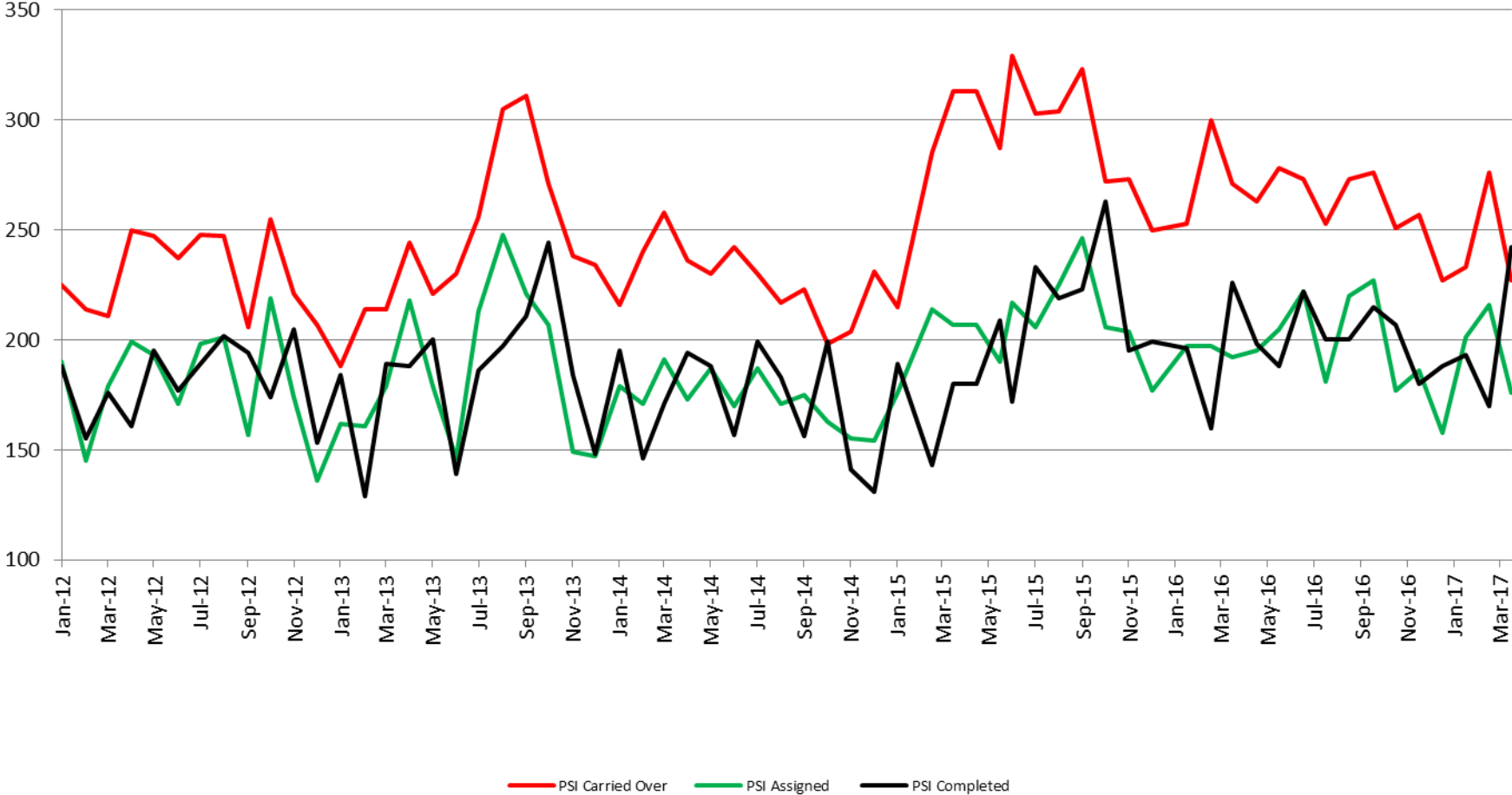
Probation - Active Caseloads 2012 - present



March	2013	2014	2015	2016	2017
District Court	2,309	2,274	2,230	2,251	2,267
Municipal Court	1,637	1,437	1,706	1,572	1,268
March YTD Avg.	2013	2014	2015	2016	2017
District Court	2,338	2,272	2,273	2,273	2,231
Municipal Court	1,618	1,423	1,672	1,551	1,266



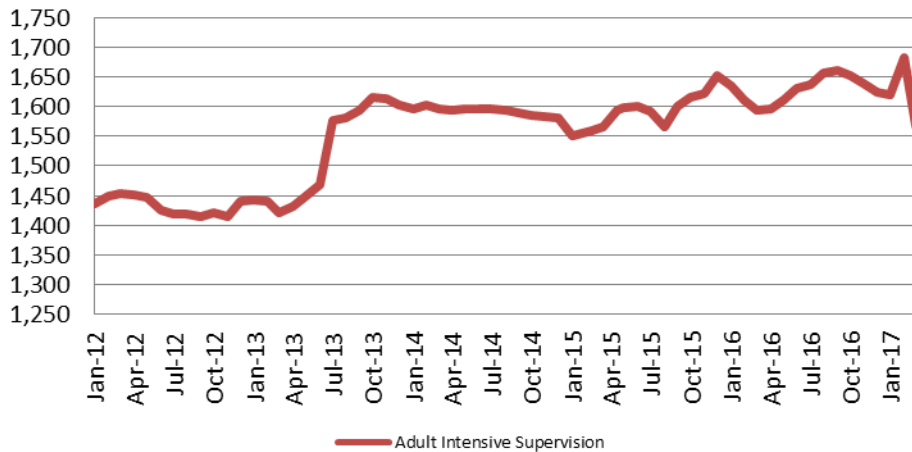
District Court Probation: Pre-Sentence Investigation 2012 - present



(data obtained from District Court)

Community Corrections

**Adult Intensive Supervision Probation (AISP)
ADP 2012 - present**



<u>March</u>	<u>March YTD Avg.</u>
2013 = 1,422	2013 = 1,435
2014 = 1,596	2014 = 1,598
2015 = 1,566	2015 = 1,558
2016 = 1,593	2016 = 1,612
2017 = 1,567	2017 = 1,623

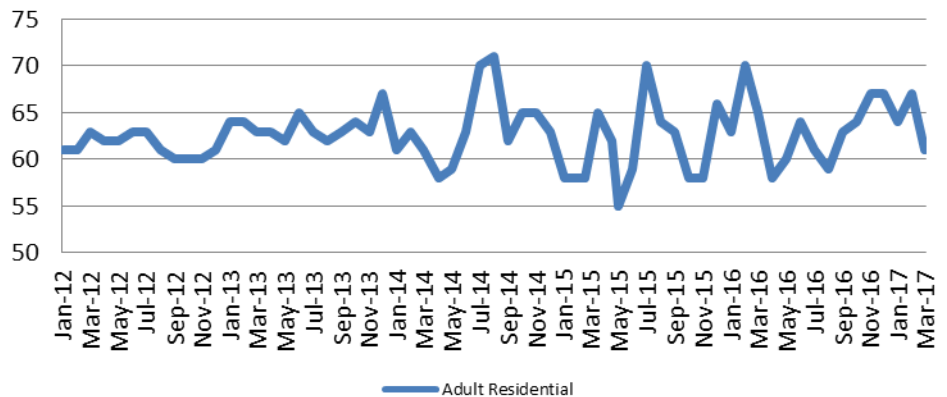
(data obtained from SG CO Dept. of Corrections)

*KDOC changed population count to include drug court, residential and AISP beginning July 2013.

<u>March</u>	<u>March YTD Avg.</u>
2013 = 63	2013 = 64
2014 = 61	2014 = 62
2015 = 65	2015 = 60
2016 = 65	2016 = 66
2017 = 61	2017 = 64

(data obtained from SG CO Dept. of Corrections)

**Adult Residential: ADP
2012 - present**

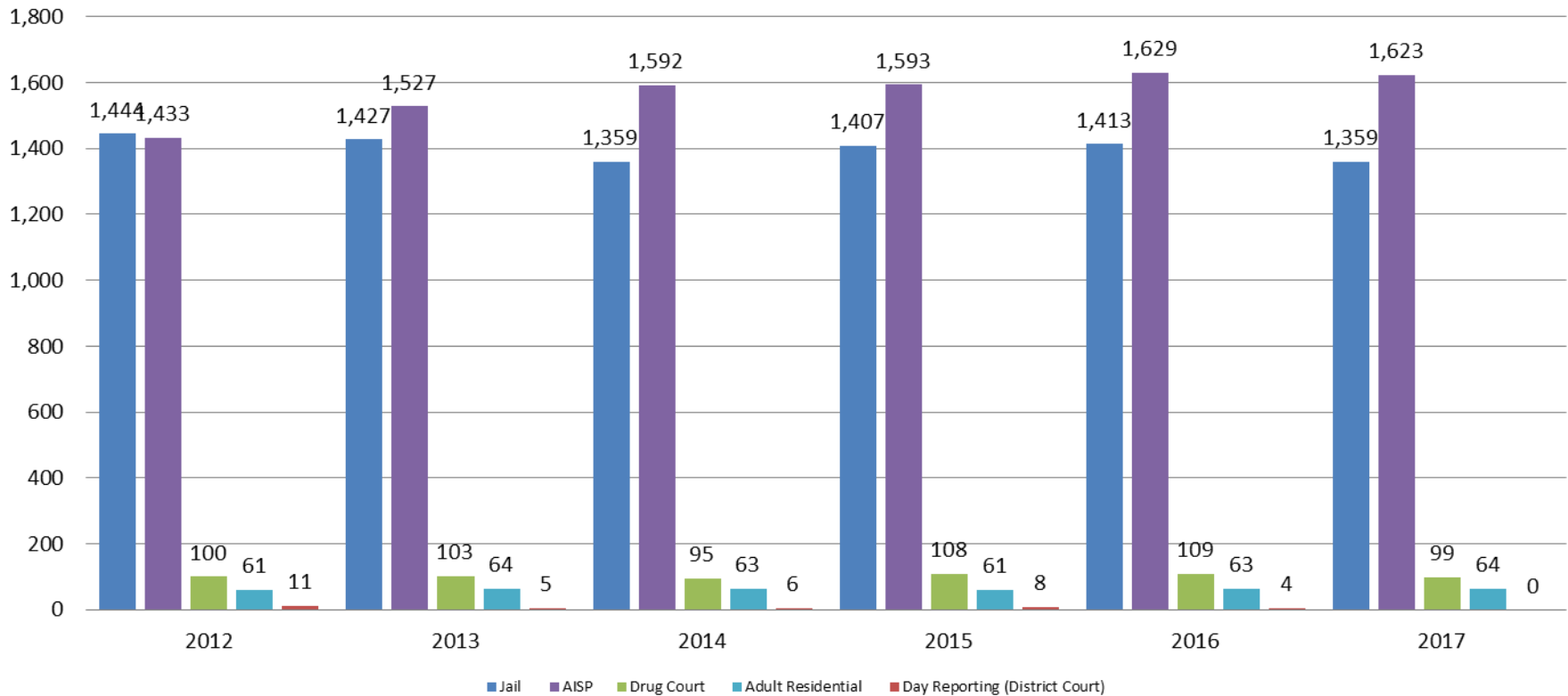


— Adult Residential



Correlation: Total & Sedgwick County Programs (Adult)

Total Annual ADP: 2012 - Present

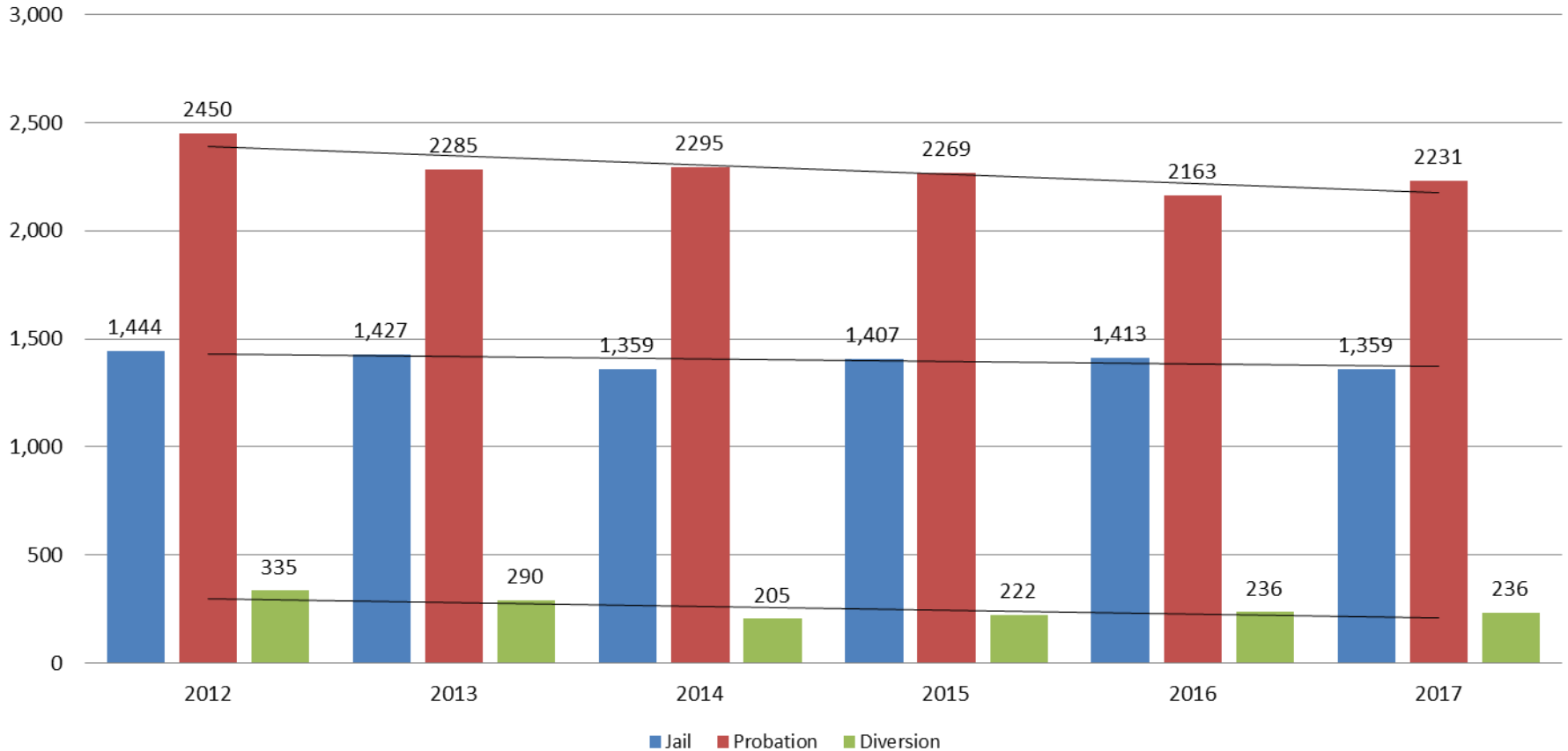


Jail includes individuals in booking, detention, work release and out-of county (combined)

(data obtained from detention facility, SG Dept. of Corrections, Pretrial Services, & CoW)

Correlation: Total & District Court Programs

Total Annual ADP: 2012 - Present

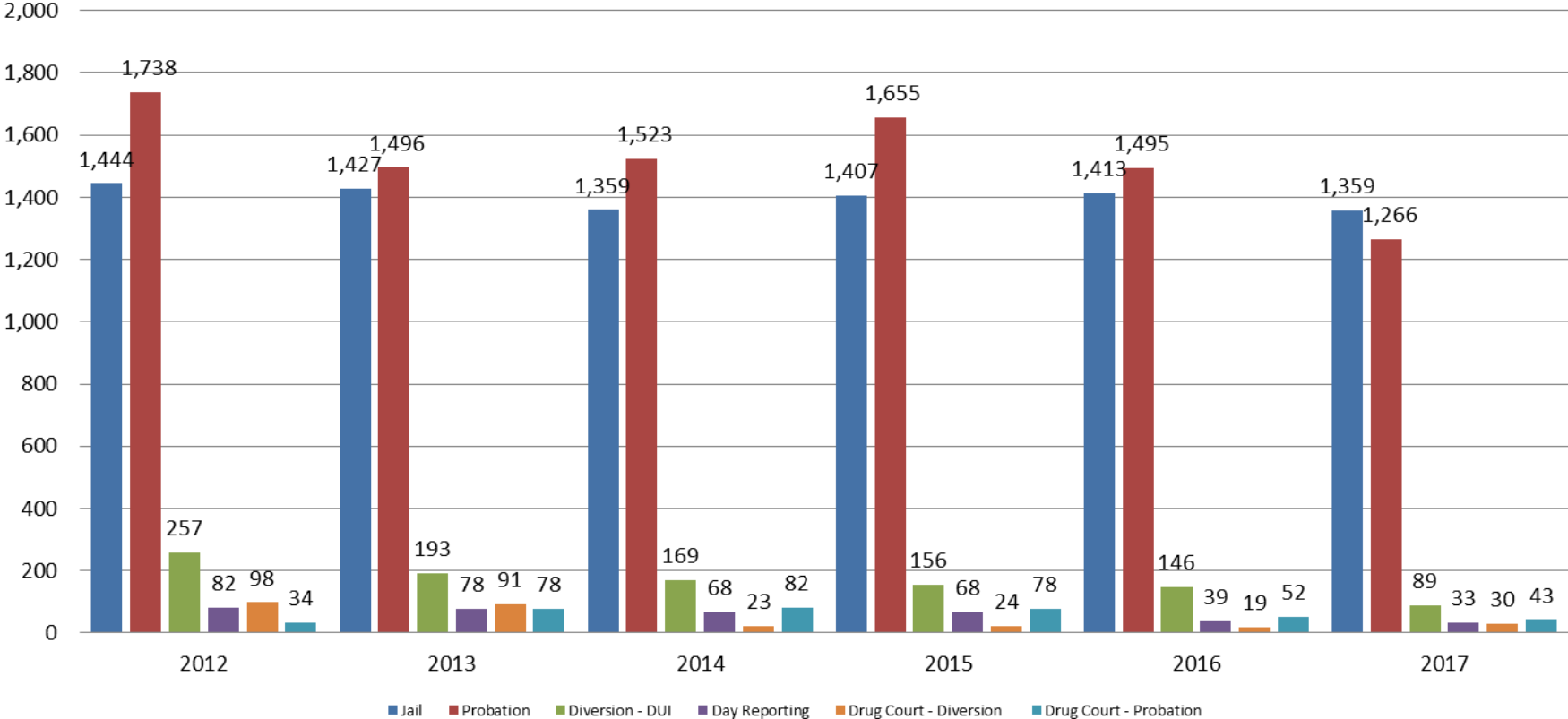


Jail includes individuals in booking, detention, work release and out-of county (combined)



Correlation: Total & City of Wichita / Municipal Court Programs

Total Annual ADP: 2012 - present



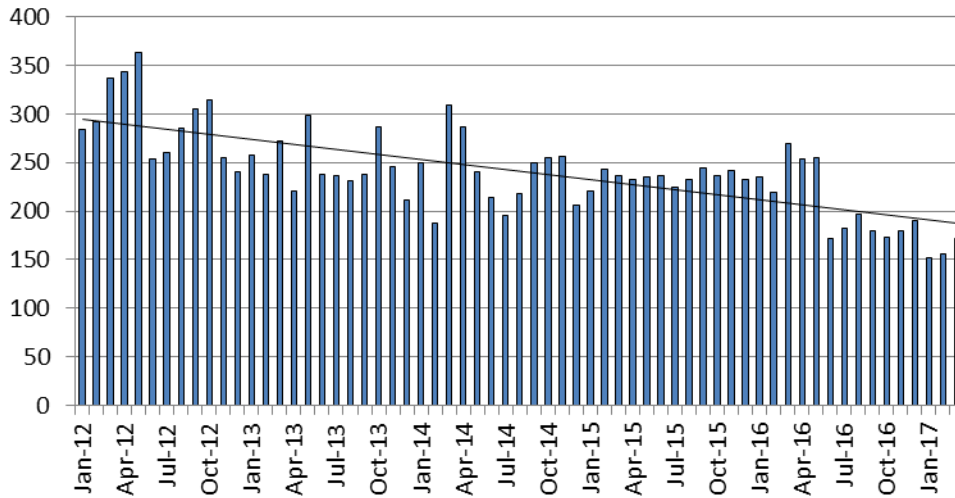
Jail includes individuals in booking, detention, work release and out-of county (combined)



(data obtained from detention facility, CoW, & Pretrial Services)

Juvenile

JIAC Intakes: 2012 - present



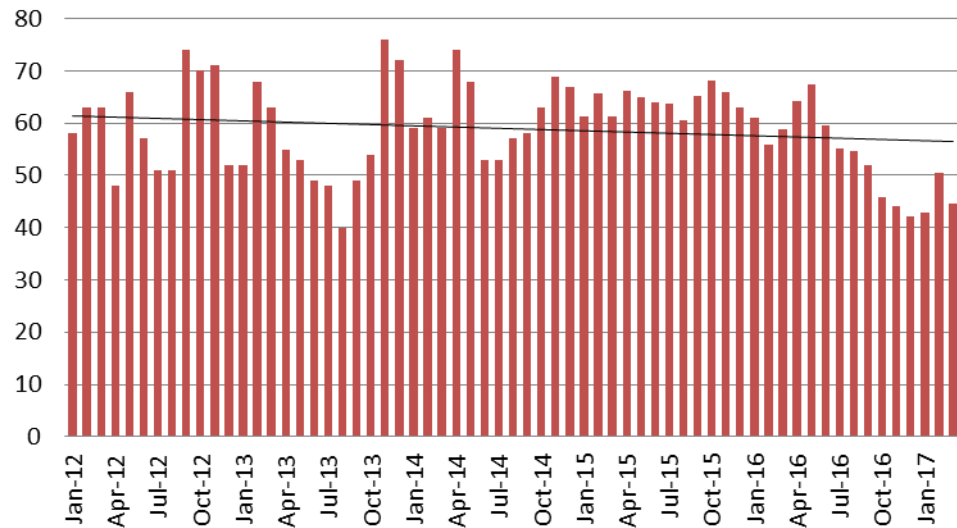
<u>March</u>	<u>March YTD Average</u>
2013 = 272	2013 = 256
2014 = 309	2014 = 249
2015 = 236	2015 = 233
2016 = 270	2016 = 241
2017 = 172	2017 = 160

(data obtained from SG CO Dept. of Corrections)

<u>March</u>	<u>March YTD Avg.</u>
2013 = 63	2013 = 61
2014 = 59	2014 = 60
2015 = 61	2015 = 63
2016 = 59	2016 = 58
2017 = 45	2017 = 46

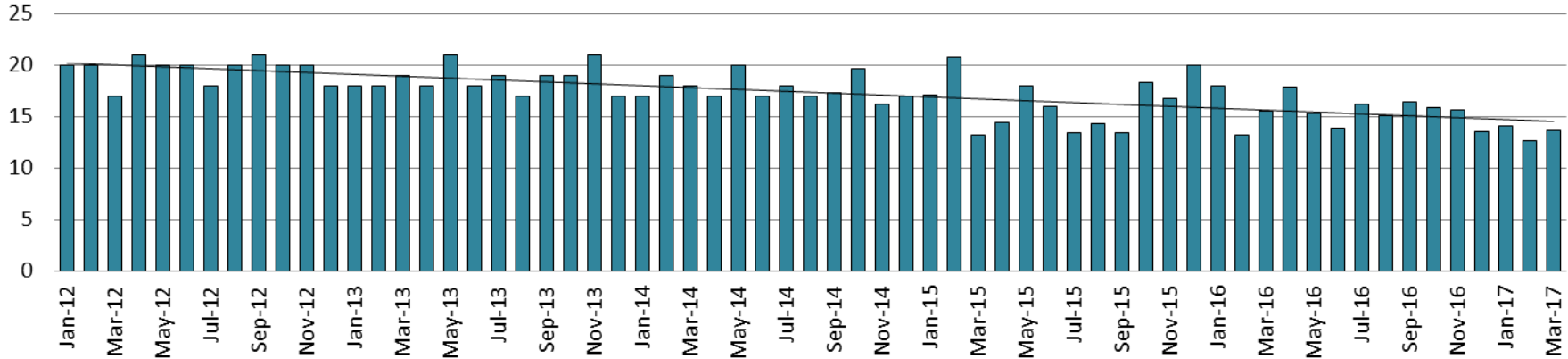
(data obtained from SG CO Dept. of Corrections)

JDF ADP: 2012 - present

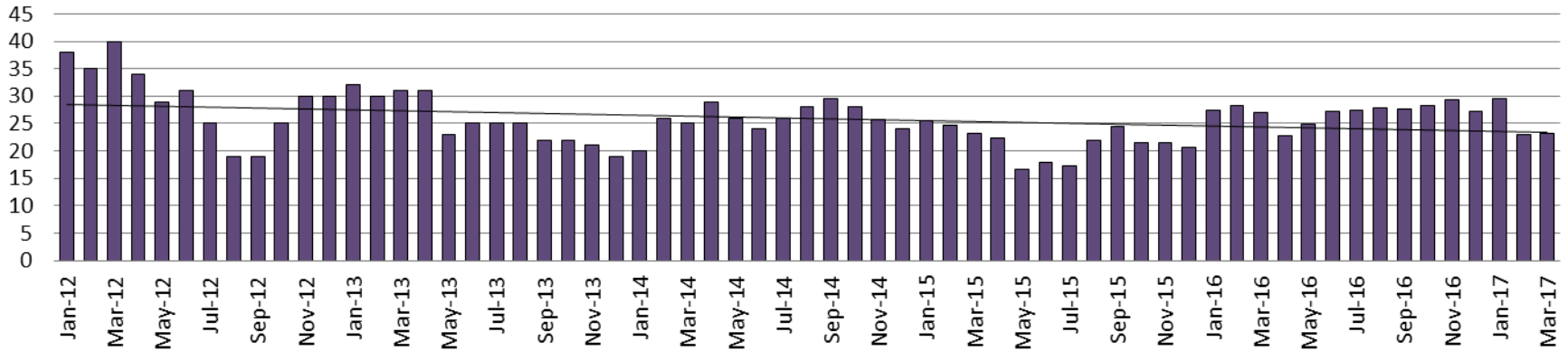


Juvenile Detention Alternatives

Juvenile Residential Facility (JRF) ADP: 2012 - present

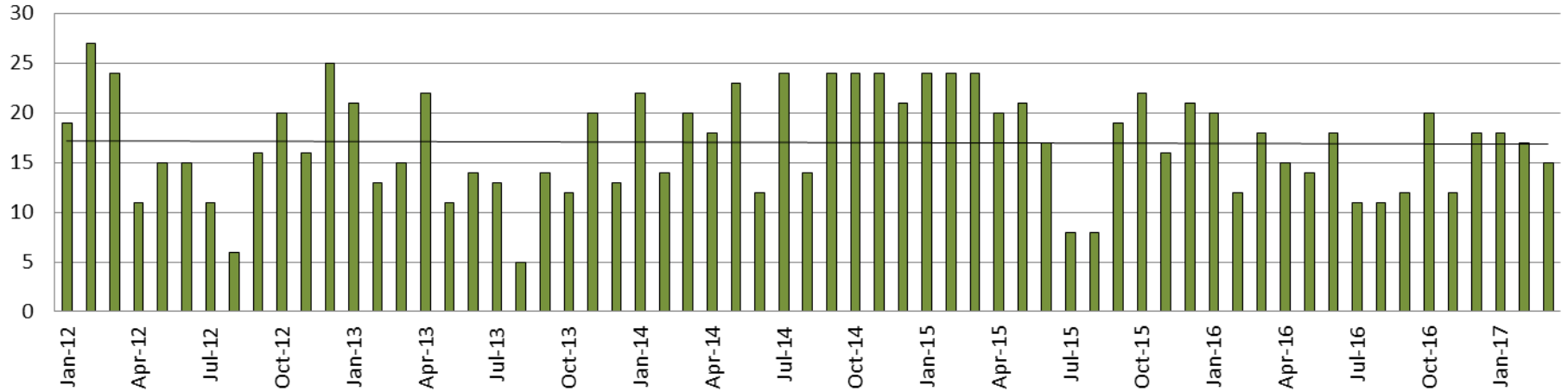


Home-Based Supervision ADP: 2012 - present

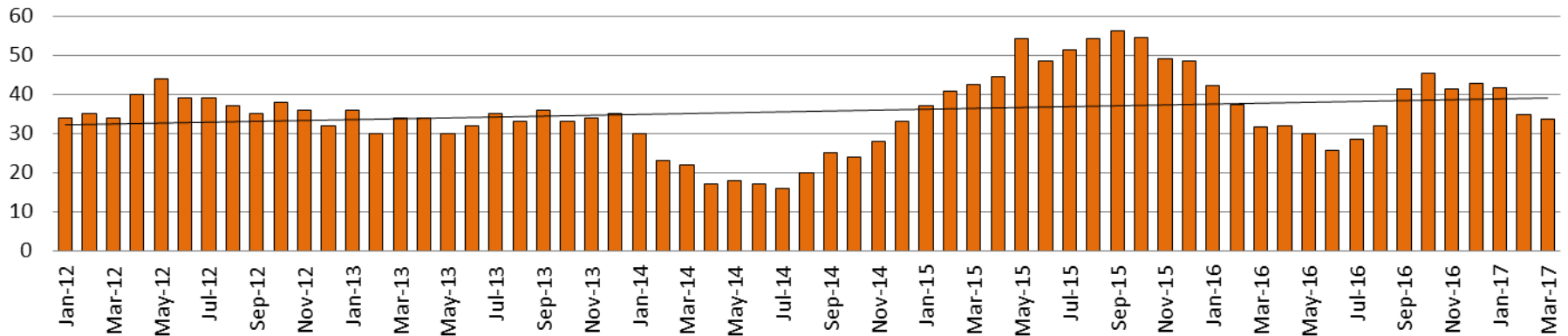


Juvenile Detention Alternatives

Weekend Alternative Detention Program 2012 - present



Detention Advocacy Case Management Services ADP: 2012 - present



Juvenile Detention Services

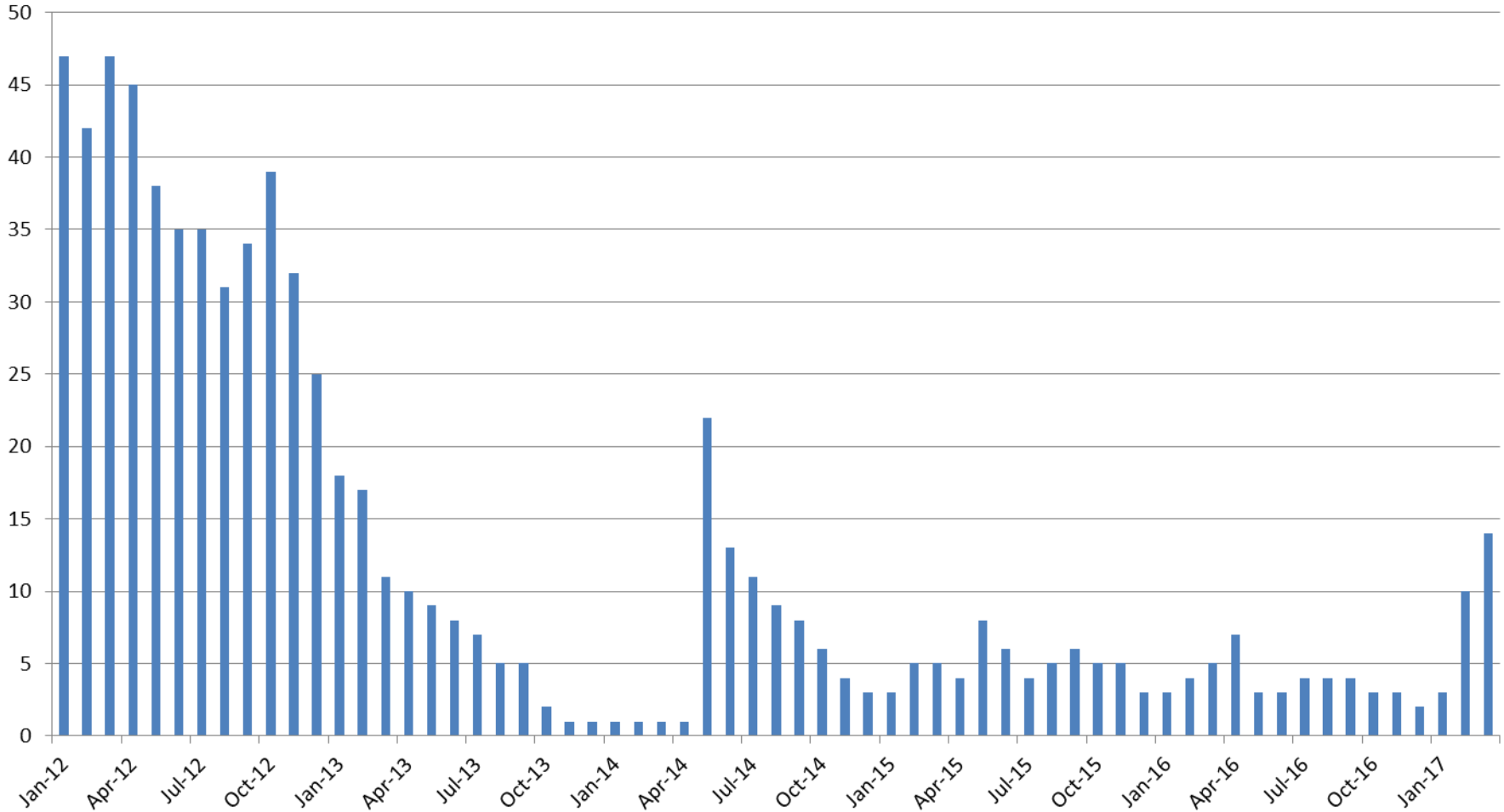
March ADP	2014	2015	2016	2017
Juvenile Detention Facility	59	64	59	45
Juvenile Residential Facility	18	13	16	14
Home Based Supervision	25	23	27	23
Detention Advocacy Case Management Services	22	42	32	34
Weekend Alternative Detention Program (total)	20	24	18	15

March YTD AVERAGE	2014	2015	2016	2017
Juvenile Detention Facility	60	63	58	46
Juvenile Residential Facility	18	17	16	13
Home Based Supervision	24	25	28	25
Detention Advocacy Case Management Services	25	40	37	37
Weekend Alternative Detention Program	19	24	17	17



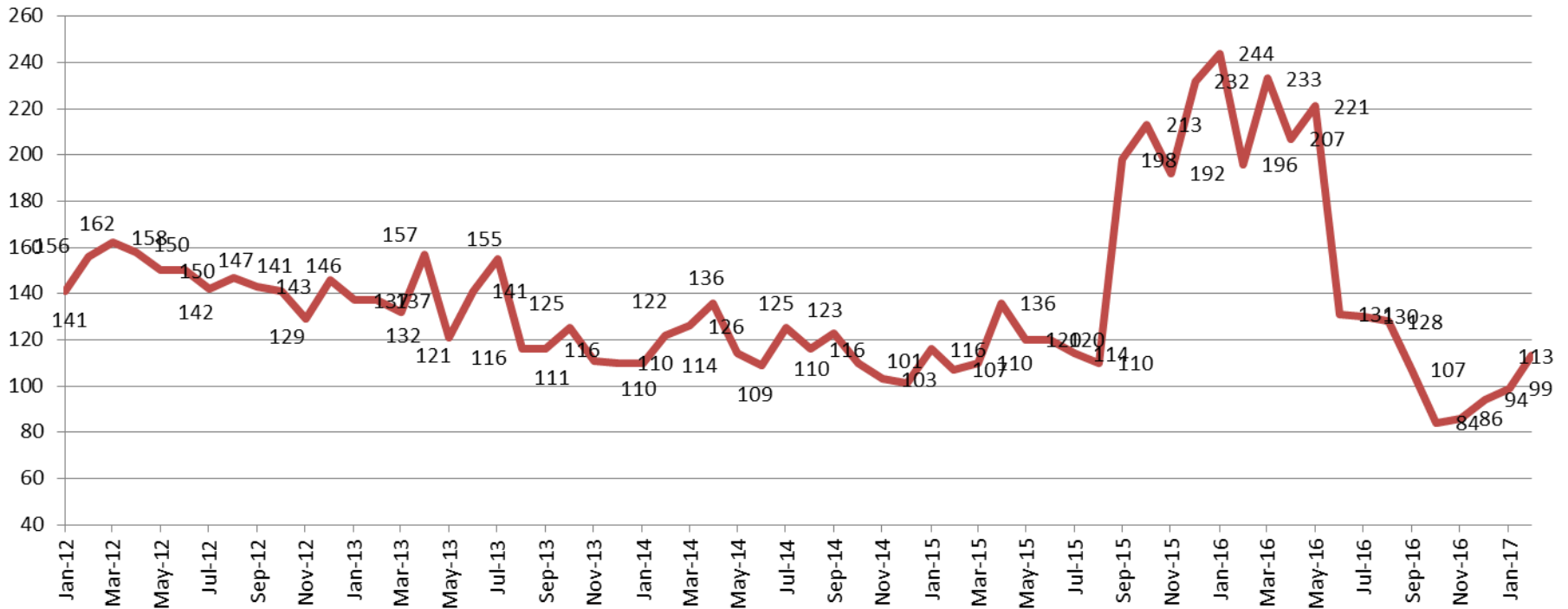
Monthly Jail Snapshot: February 28, 2017

BICE Holds 2012-Present



Monthly Jail Snapshot: February 28, 2017

Felony Commitments: February 2012 - present



March:

2012 = 156

2013 = 137

2014 = 122

2015 = 107

2016 = 196

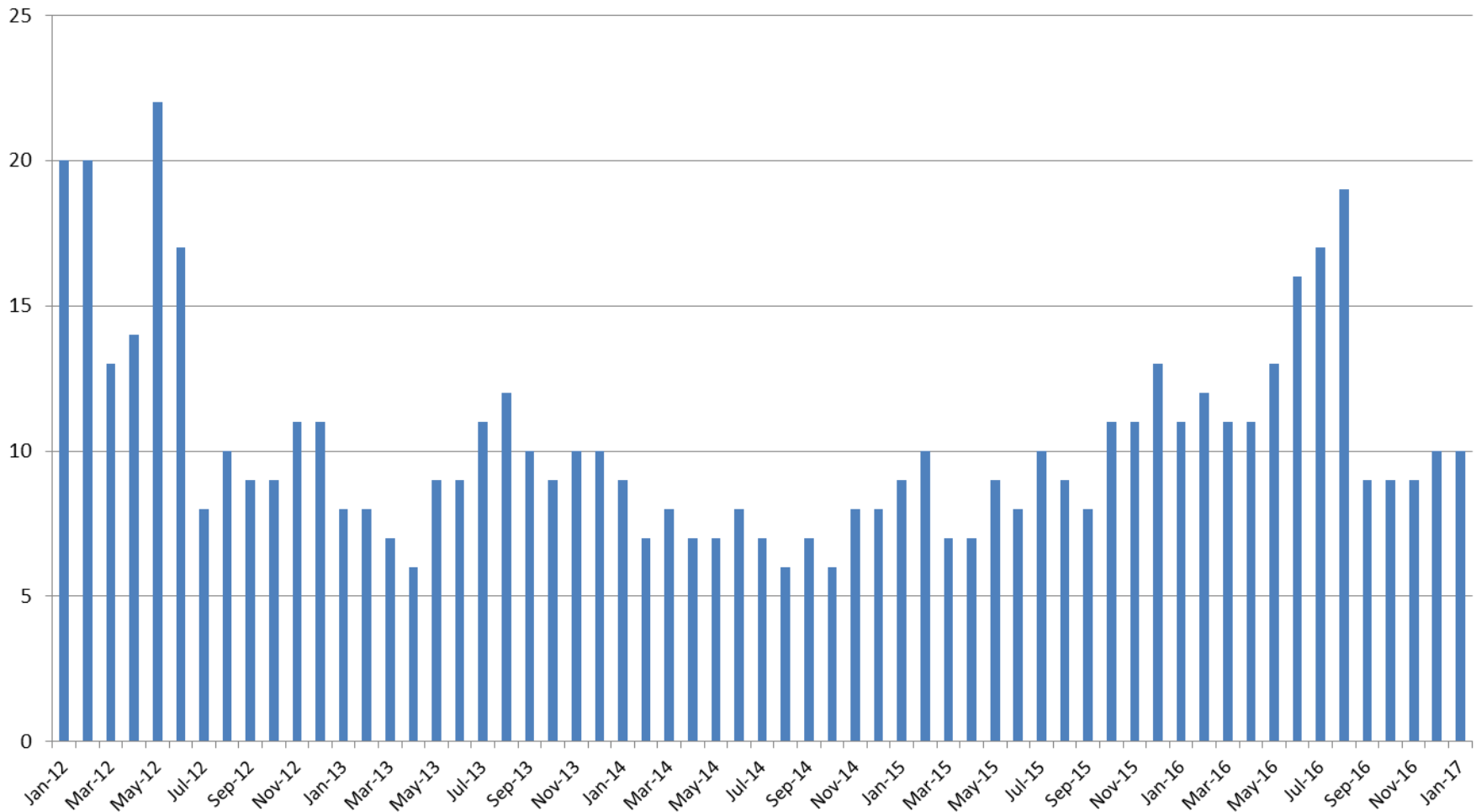
2017 = 113

(data obtained from SG CO DIO)



Sedgwick County...
working for you

Journal Entry Completion (Average Days) January 2013-Present



This data is always reported a month behind

