

Criminal Justice Coordinating Council

Population Report & Program Trends

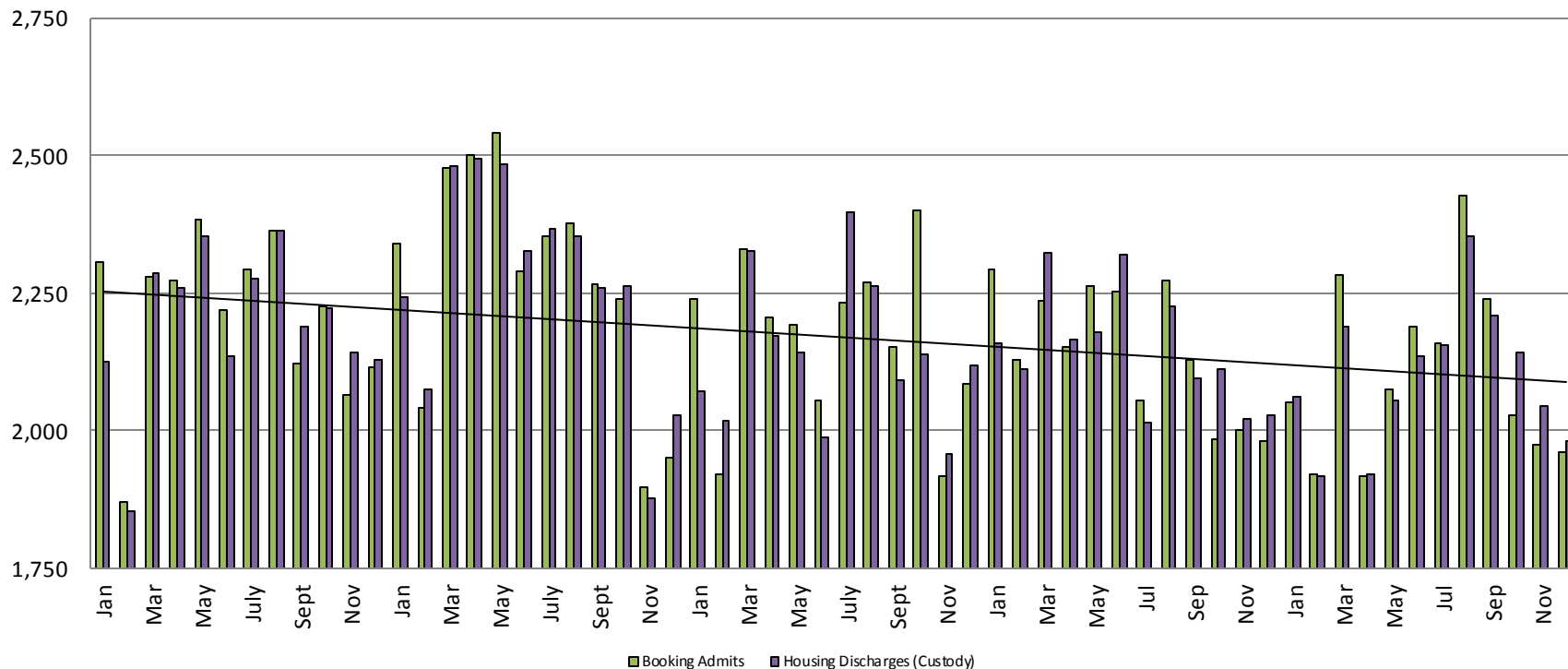
January 2018



Sedgwick County...
working for you

Detention Facility

Booking Admits & Housing Discharges from Custody January 2013 - Present



Bookings for December

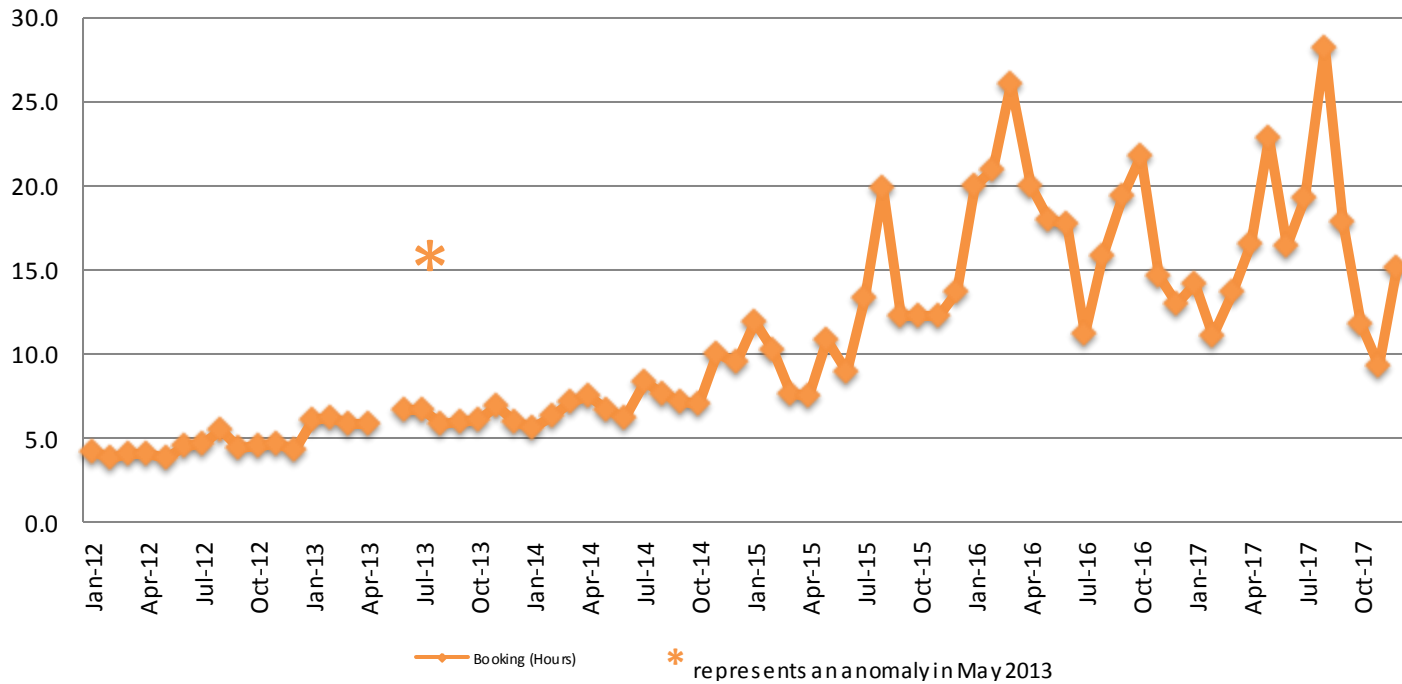
2015 = 2,086
 2016 = 1,982
 2017 = 1,959

Housing Discharges for December

2015 = 2,119
 2016 = 2,029
 2017 = 1,982



Average Length of Stay: Booking (Hours) January 2012 - Present



December

2012 = 4.3 2015 = 13.7
 2013 = 6.0 2016 = 13.0
 2014 = 9.5 2017 = 15.1

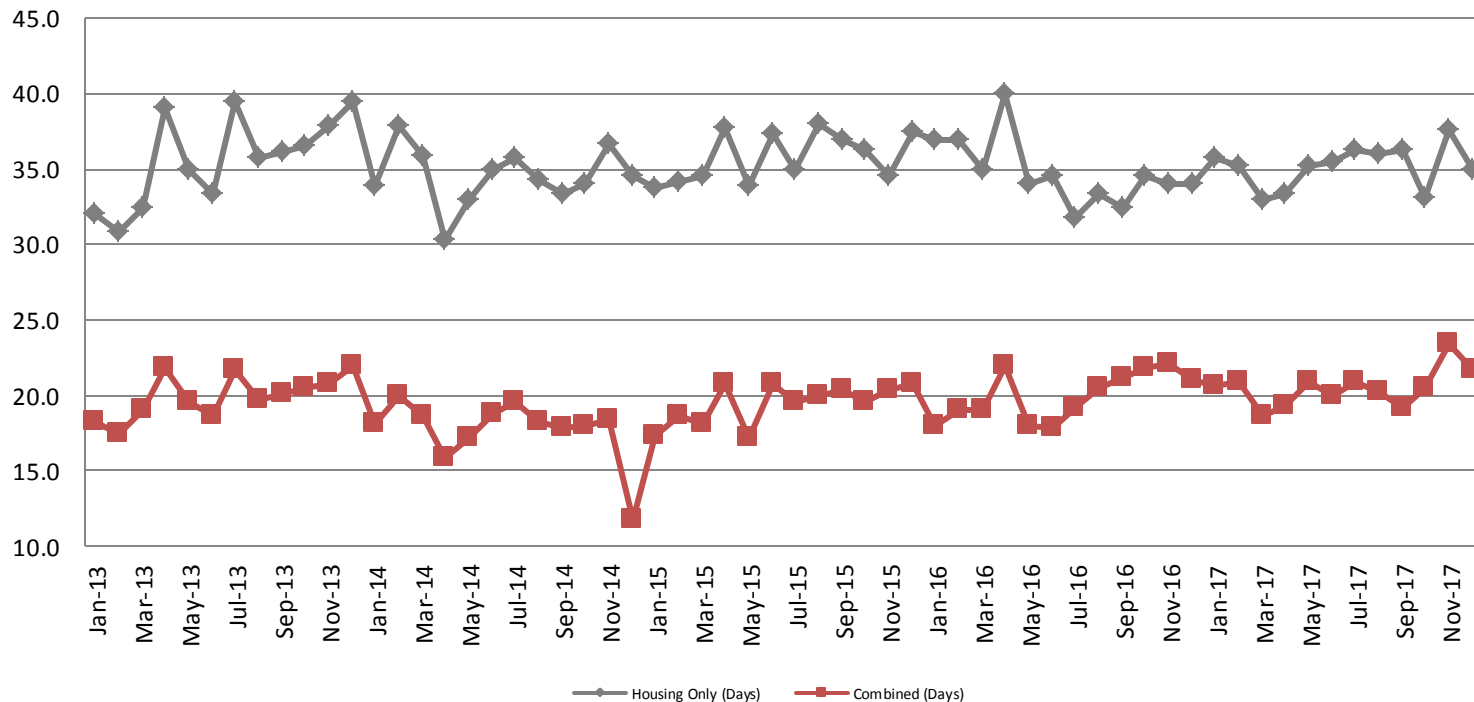
December YTD Avg.

2012 = 4.4 2015 = 11.8
 2013 = 7.1 2016 = 18.2
 2014 = 7.4 2017 = 16.4



Average Length of Stay: Housing & Combined (Days)

January 2013 - Present



December Housing

2013 = 39.5
 2014 = 34.5
 2015 = 37.5
 2016 = 34.0
 2017 = 34.9

December Housing YTD Avg.

2013 = 35.6
 2014 = 34.6
 2015 = 35.8
 2016 = 34.8
 2017 = 35.2

December Combined

2013 = 22.0
 2014 = 11.7
 2015 = 20.8
 2016 = 21.0
 2017 = 21.7

December Combined YTD Avg.

2013 = 20.0
 2014 = 17.7
 2015 = 19.4
 2016 = 20.0
 2017 = 20.5

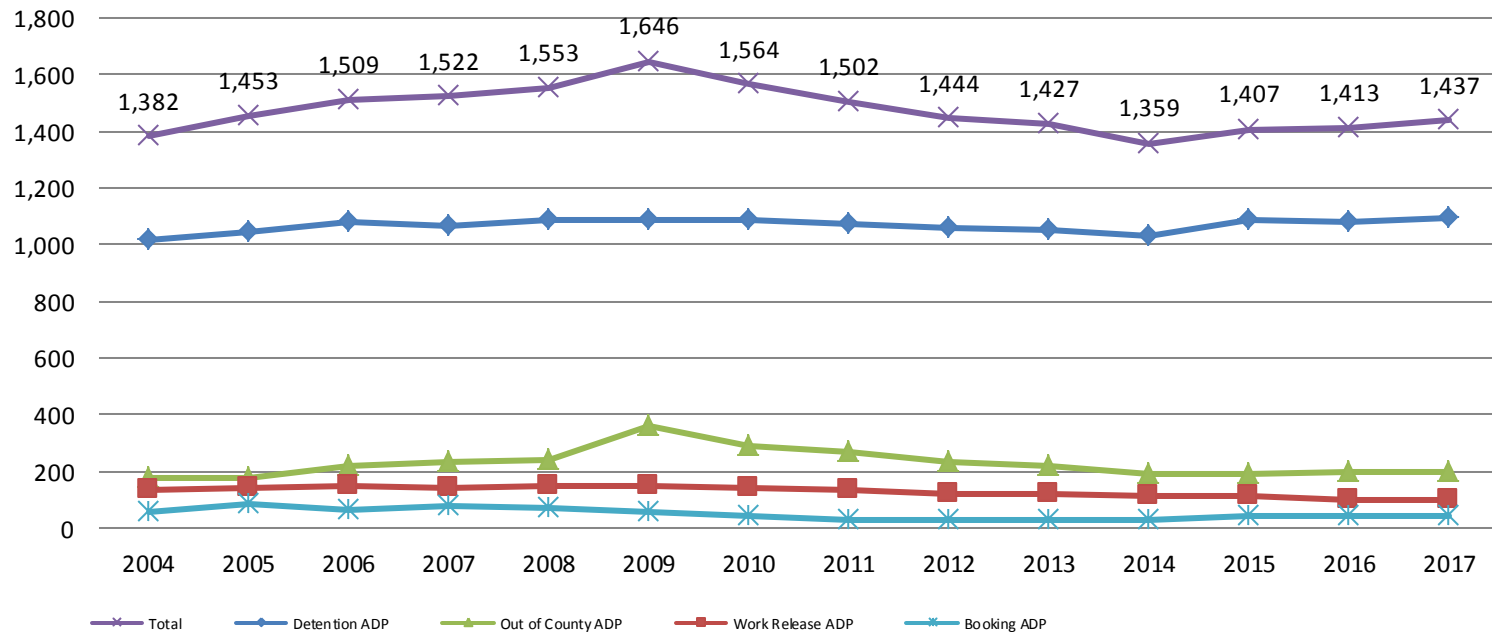


Sedgwick County...
 working for you

(data obtained from detention facility)

Jail: Annual Average Daily Population (ADP)

**TRENDS: Booking, Detention, Work Release, & Out of County
Annual ADP: 2004 - present**



TOTAL MONTHLY ADP: JAIL

(Booking, Detention Facility, Work Release, & Out of County)

2007 - present



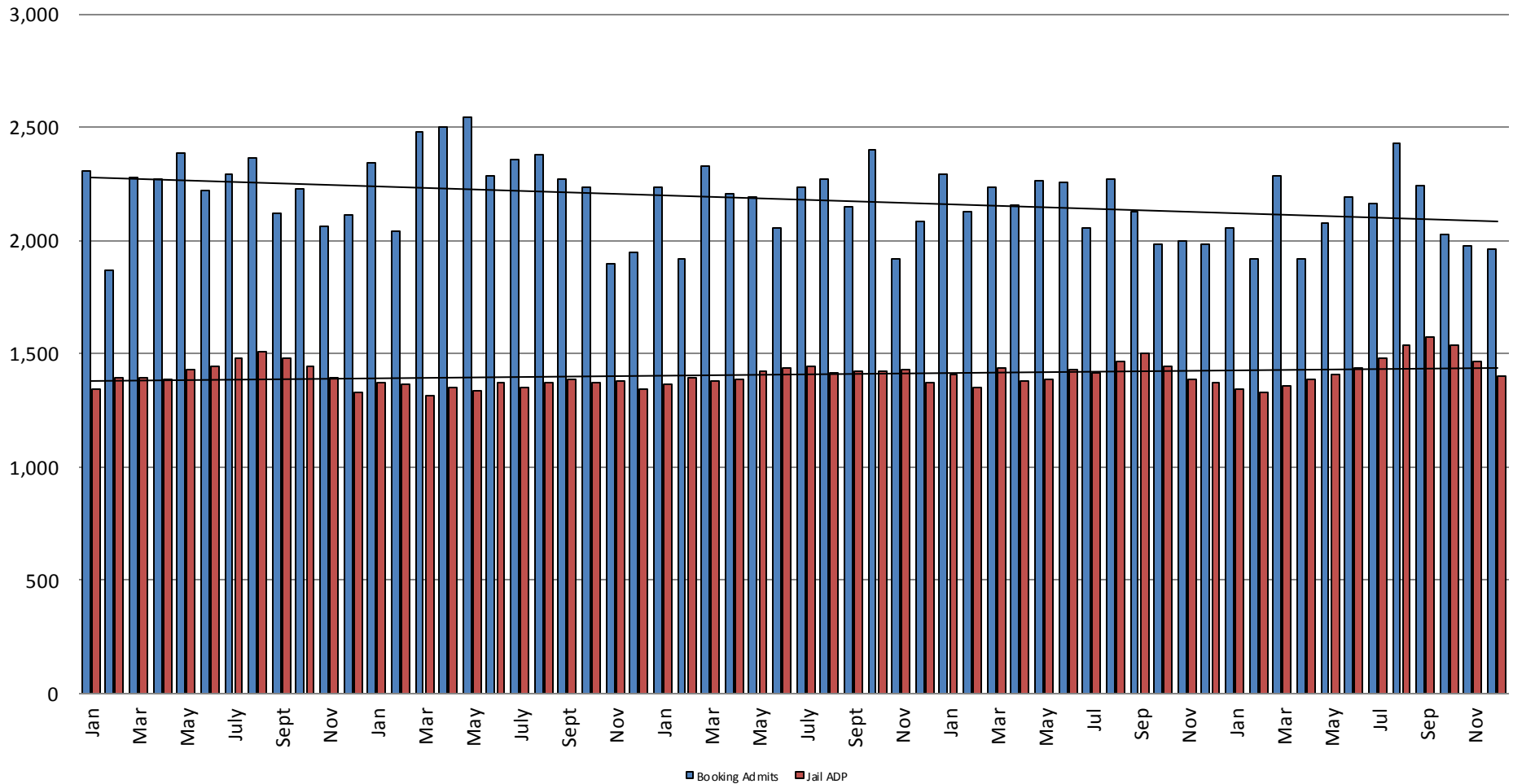
This slide shows total monthly ADP for individuals in booking, detention, work release and out-of county (combined)



Sedgwick County...
working for you

(data obtained from detention facility)

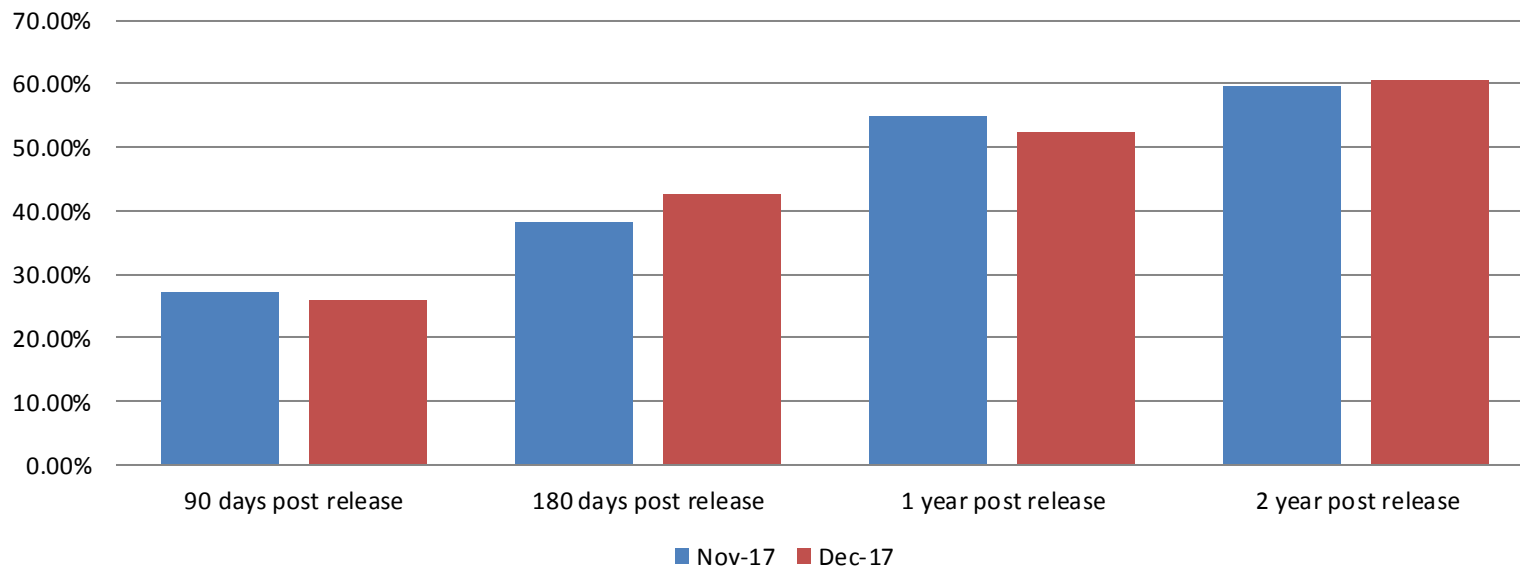
Booking Admits & Total Monthly ADP (Jail): 2013 - present



Jail includes individuals in booking, detention, work release and out-of county (combined)

(data obtained from detention facility)

Percent of released inmates rearrested



90 days

Nov 2017= 27.25%

Dec 2017= 25.85 %

180 days

Nov 2017 = 38.27%

Dec 2017 = 42.72%

1 year

Nov 2017 = 54.81%

Dec 2017 = 52.28%

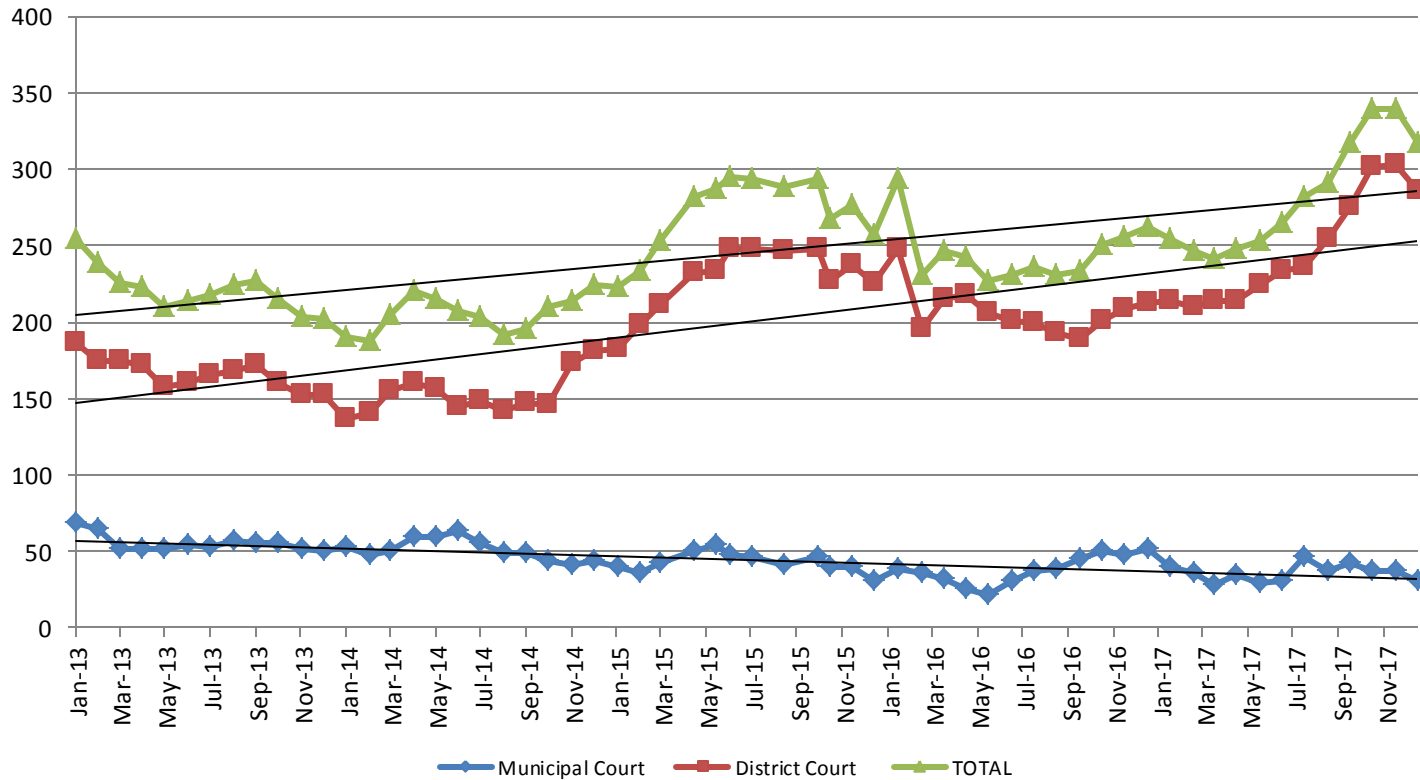
2 years

Nov 2017 = 59.64%

Dec 2017 = 60.64%



Pretrial Services Program (PSP) Monthly ADP: January 2013 - Present

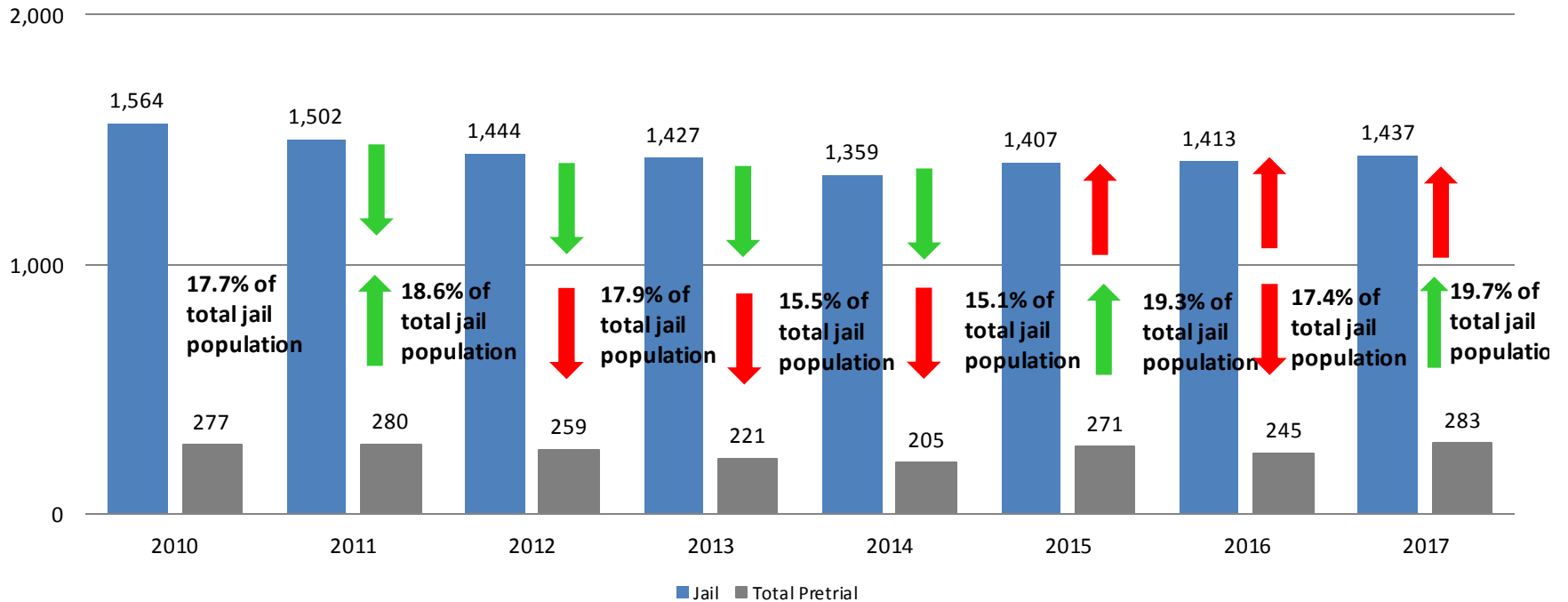


December	2013	2014	2015	2016	2017
Municipal Court	50	44	31	51	31
District Court	152	181	226	212	286
TOTAL	202	225	257	263	317

December YTD Avg.	2013	2014	2015	2016	2017
Municipal Court	55	51	43	38	36
District Court	166	153	228	207	247
TOTAL	221	205	271	245	283

Correlation: Total & PSP

Total Annual ADP: 2010 - Present

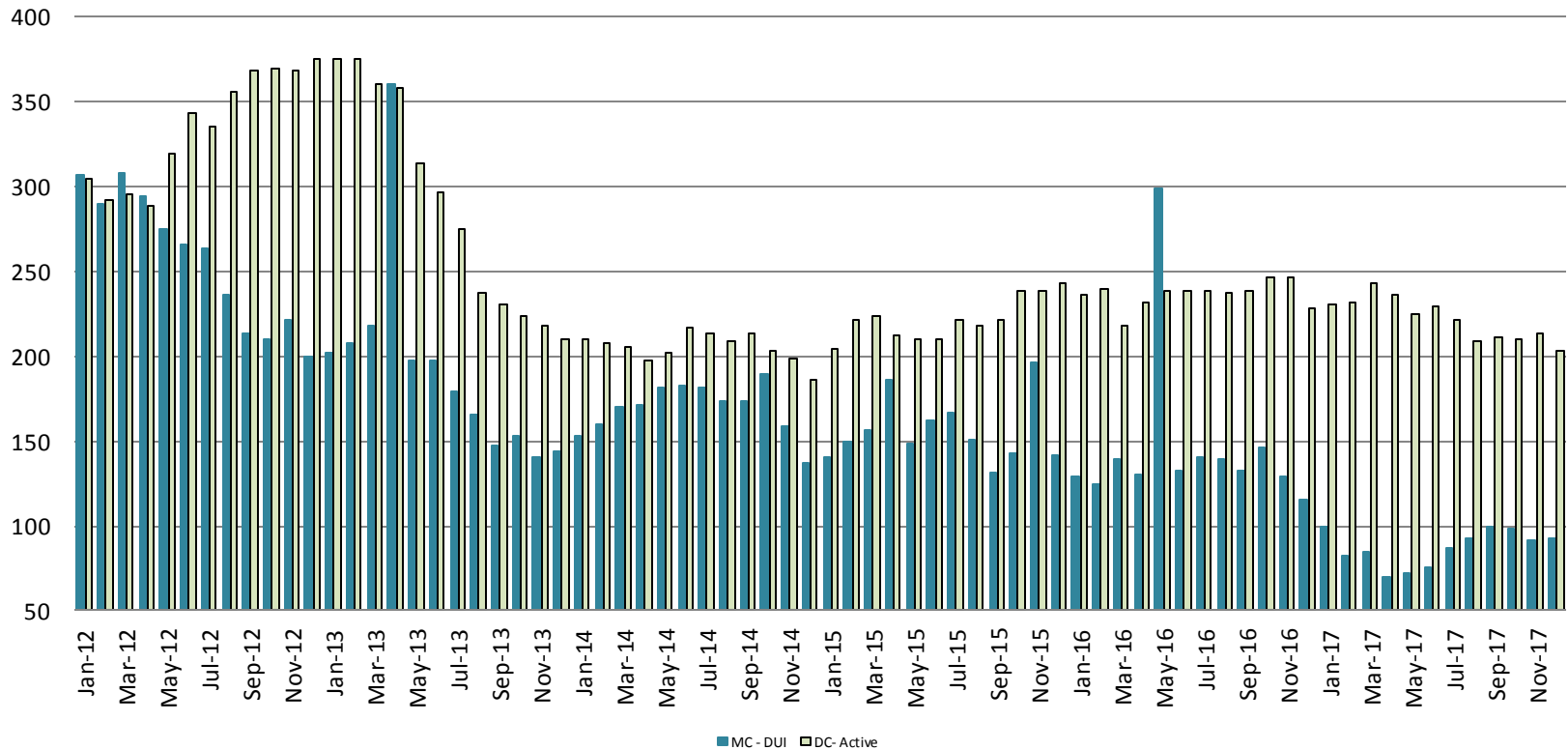


Arrows represent the overall increase/decrease of the population from year to year

Jail includes individuals in booking, detention, work release and out-of county (combined)



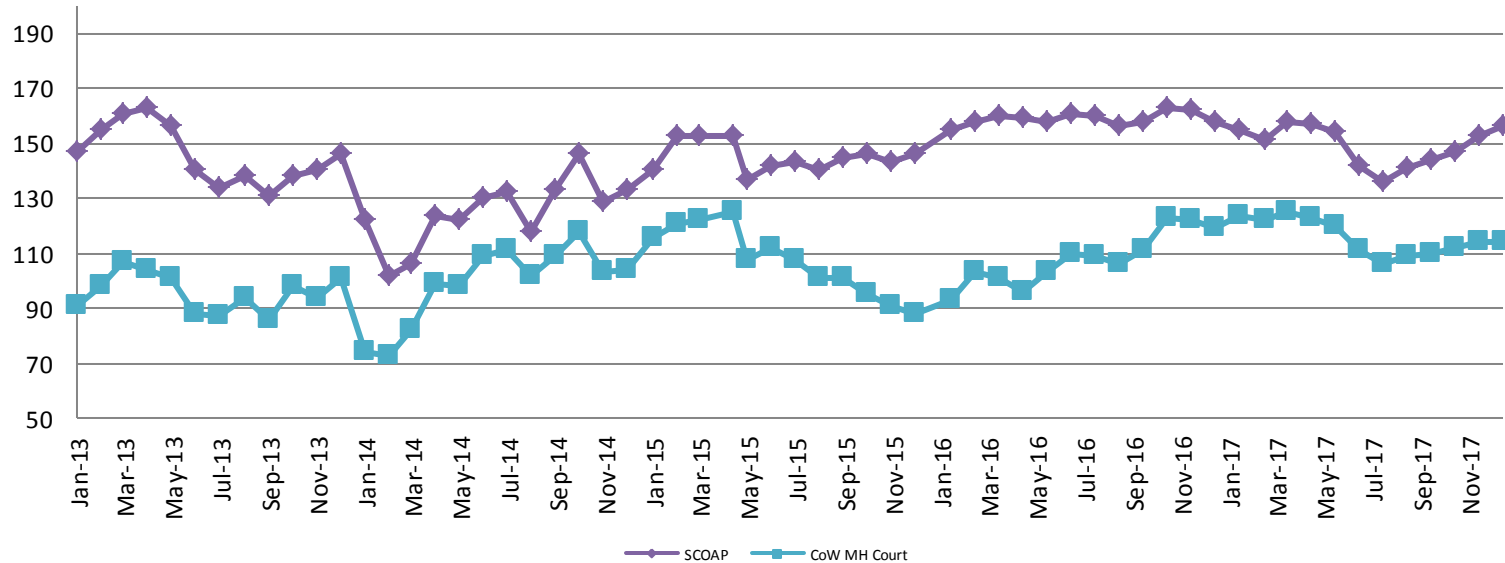
Diversion - Active Caseload January 2012 - Present



<u>December</u>	<u>2013</u>	<u>2014</u>	<u>2015</u>	<u>2016</u>	<u>2017</u>
Municipal Court- DUI	144	137	142	115	93
District Court- Active	210	186	243	228	203

<u>December YTD Avg.</u>	<u>2013</u>	<u>2014</u>	<u>2015</u>	<u>2016</u>	<u>2017</u>
Municipal Court	193	169	156	146	87
District Court	290	205	222	236	222

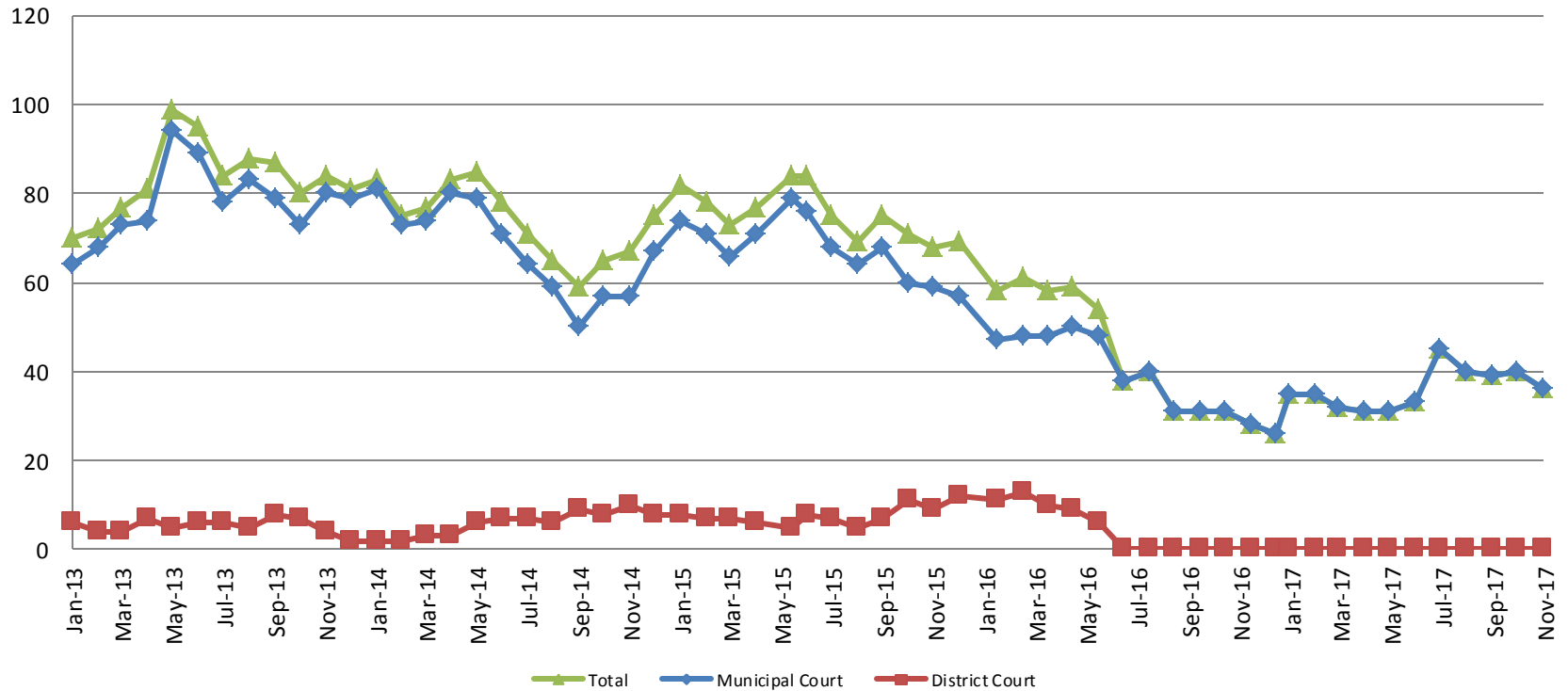
Mental Health - ADP 2013 - present



December:	2013	2014	2015	2016	2017
SCOAP	146	133	146	158	156
CoW – MH Court	101	104	88	119	114
December YTD Avg.	2013	2014	2015	2016	2017
SCOAP	146	125	145	159	150
CoW – MH Court	96	99	107	108	116



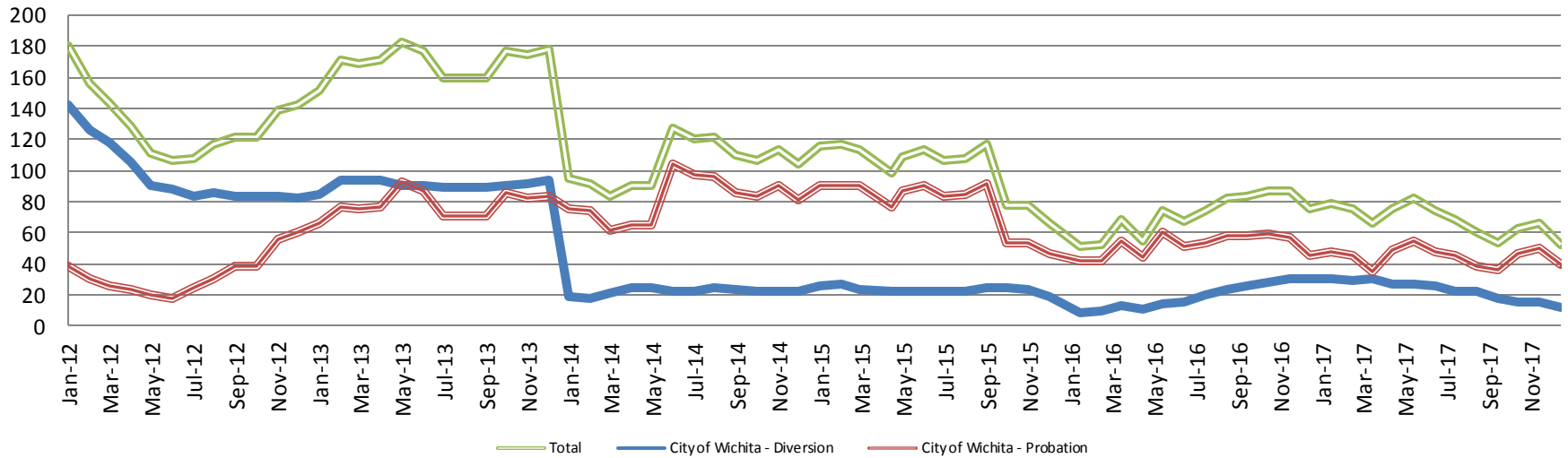
Day Reporting - Active Caseload 2013-present



December	2013	2014	2015	2016	2017
Municipal Court	79	67	57	26	37
District Court	2	8	12	0*	0*
TOTAL	81	75	69	26	37
December YTD Avg.	2013	2014	2015	2016	2017
Municipal Court	78	68	68	39	36
District Court	5	6	8	4*	0*
TOTAL	83	74	75	43	36



Drug Court - City of Wichita ADP: 2012 - present



Dec. CoW Diversion

2013 = 94
2014 = 23
2015 = 19
2016 = 30
2017 = 12

Dec. YTD Avg.

2013 = 91
2014 = 23
2015 = 24
2016 = 19
2017 = 23

Dec. CoW Probation

2013 = 84
2014 = 81
2015 = 47
2016 = 45
2017 = 40

Dec. YTD Avg.

2013 = 78
2014 = 82
2015 = 78
2016 = 52
2017 = 52

Dec. CoW Total

2013 = 178
2014 = 104
2015 = 66
2016 = 75
2017 = 52

Dec. YTD Avg.

2013 = 169
2014 = 104
2015 = 102
2016 = 71
2017 = 68

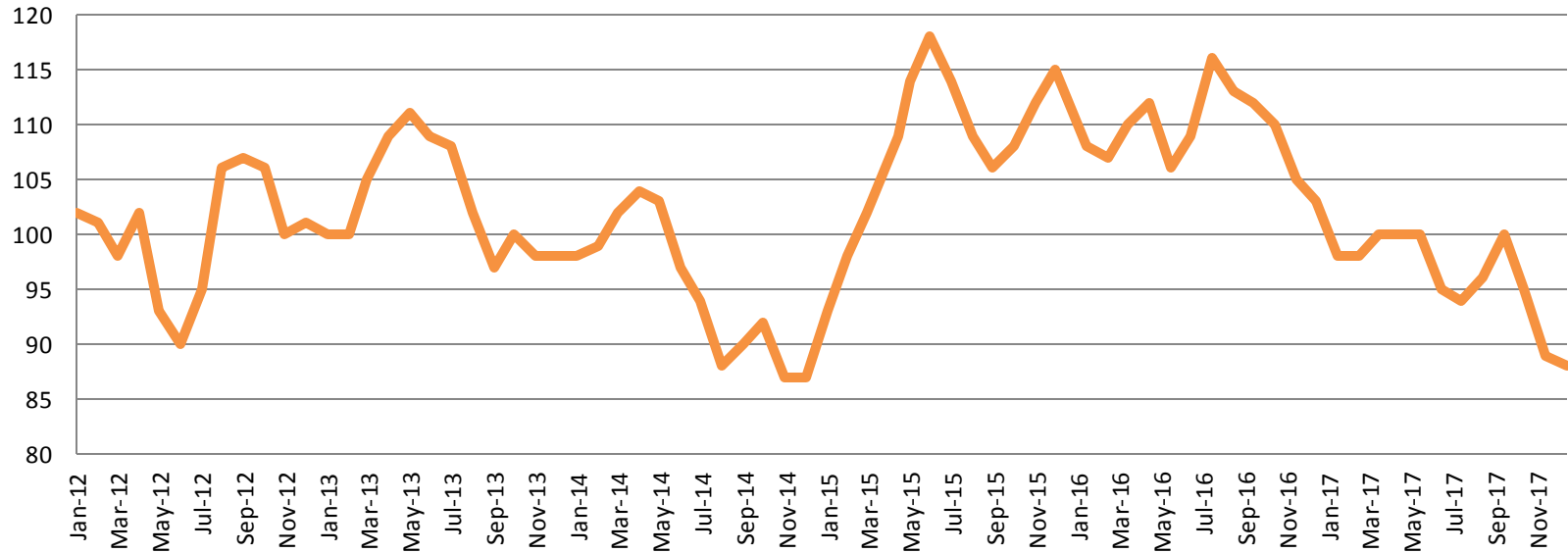


Sedgwick County...

working for you

(data obtained from CoW)

Drug Court - Sedgwick County ADP: 2012 - present



December SG CO

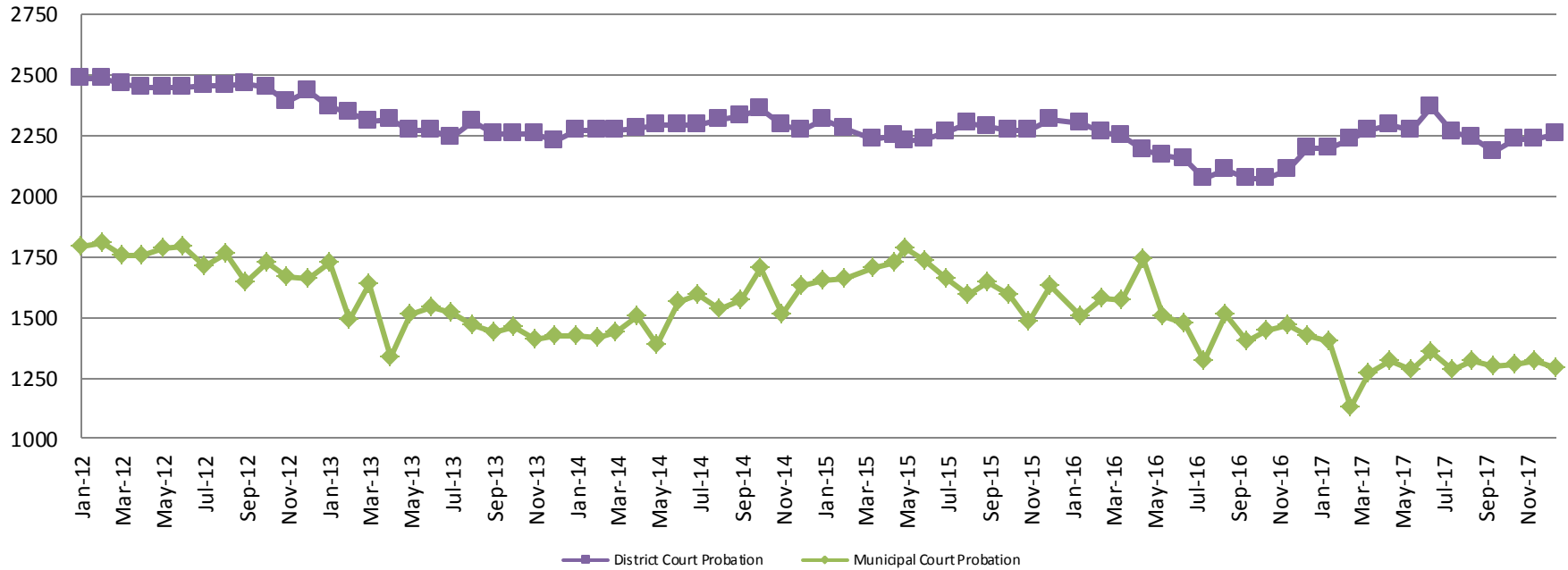
2013 = 98
 2014 = 87
 2015 = 115
 2016 = 103
 2017 = 88

December YTD Avg.

2013 = 103
 2014 = 95
 2015 = 108
 2016 = 109
 2017 = 96

(data obtained from Pretrial Services)

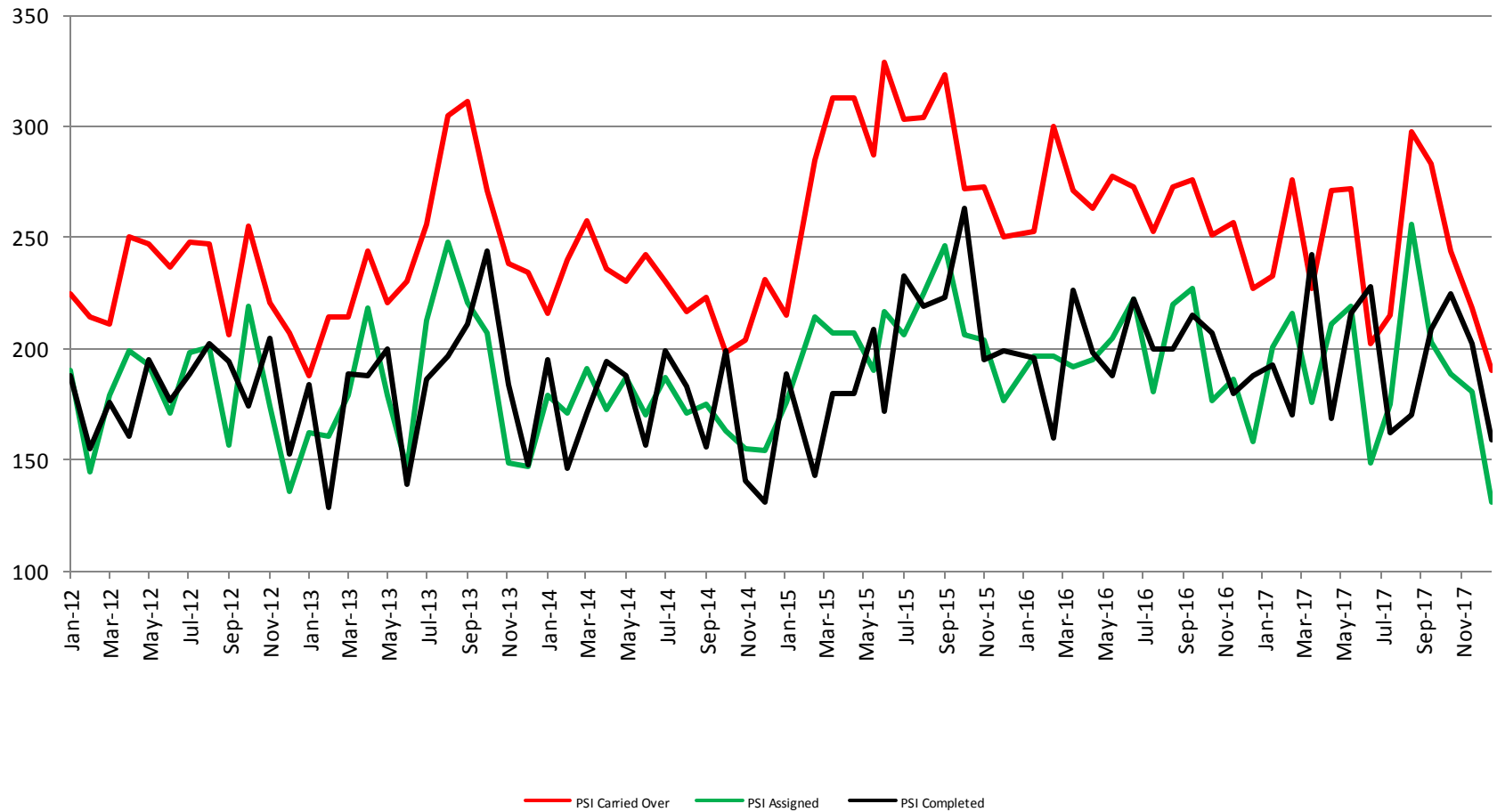
Probation - Active Caseloads 2012 - present



December	2013	2014	2015	2016	2017
District Court	2,226	2,271	2,314	2,196	2,257
Municipal Court	1,420	1,632	1,633	1,423	1,292
December YTD Avg.	2013	2014	2015	2016	2017
District Court	2,285	2,295	2,269	2,163	2,253
Municipal Court	1,496	1,523	1,655	1,495	1,298

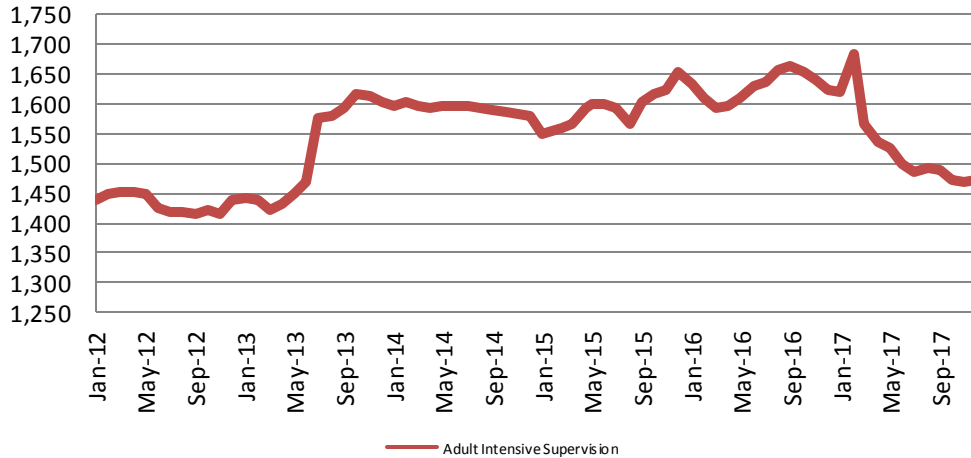


District Court Probation: Pre-Sentence Investigation 2012 - present



Community Corrections

Adult Intensive Supervision Probation (AISP) ADP 2012 - present



December

2013 = 1,603
2014 = 1,580
2015 = 1,652
2016 = 1,624
2017 = 1,473

December YTD Avg.

2013 = 1,520
2014 = 1,592
2015 = 1,593
2016 = 1,629
2017 = 1,526

(data obtained from SG CO Dept. of Corrections)

*KDOC changed population count to include drug court, residential and AISP beginning July 2013.

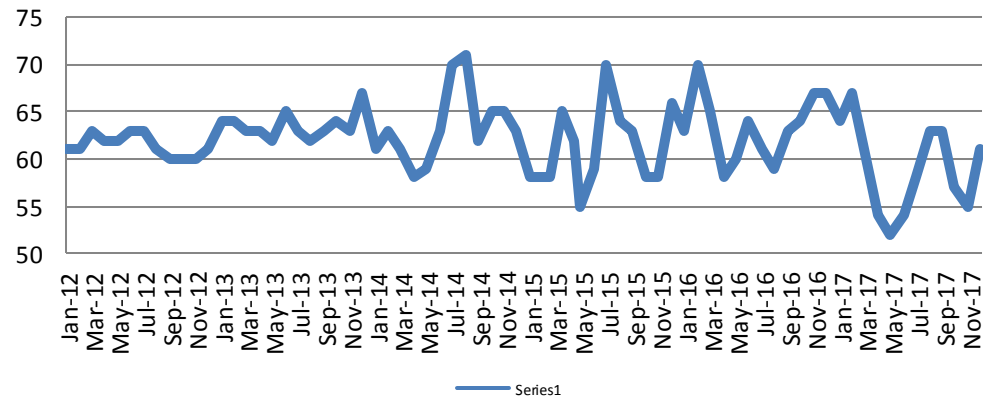
Adult Residential: ADP 2012 - present

December

2013 = 67
2014 = 63
2015 = 66
2016 = 67
2017 = 61

December YTD Avg.

2013 = 64
2014 = 63
2015 = 61
2016 = 63
2017 = 59



(data obtained from SG CO Dept. of Corrections)

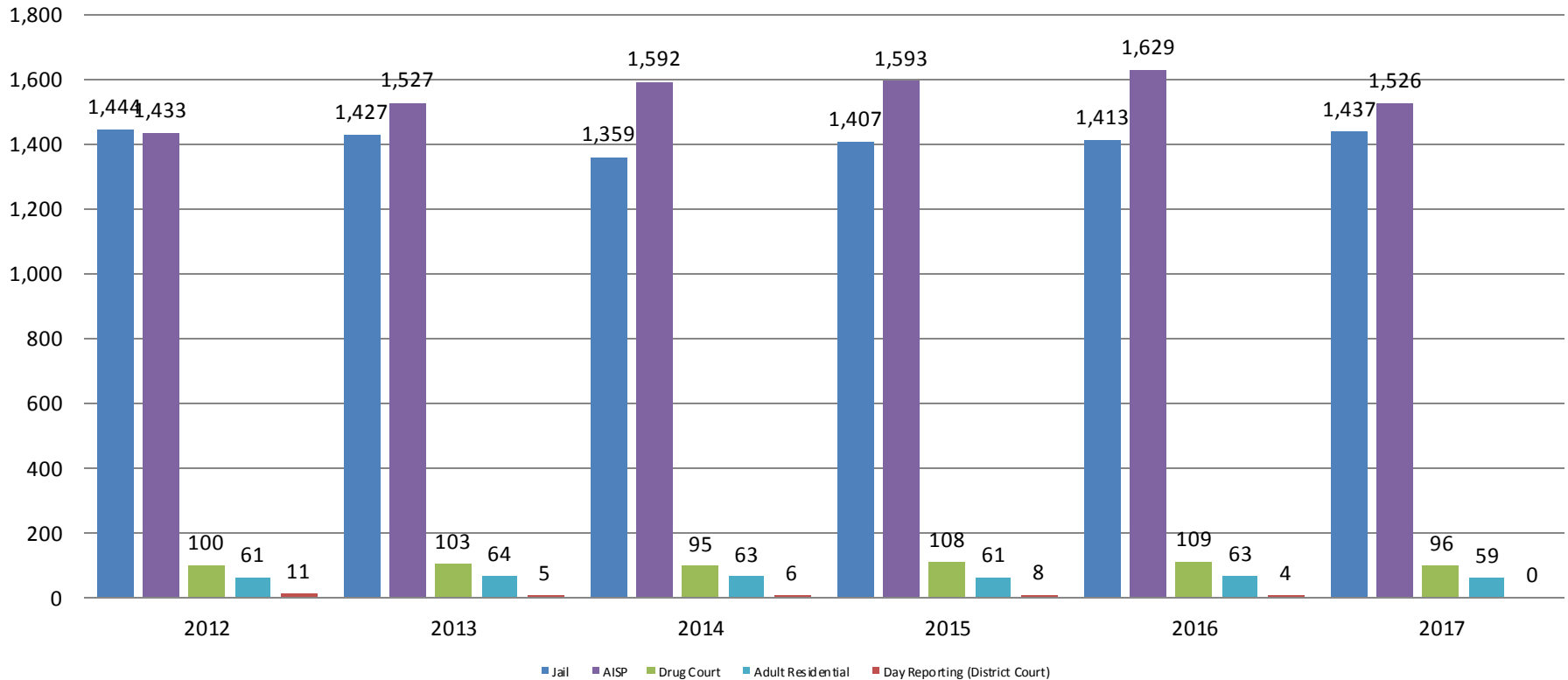
Series1



Sedgwick County...
working for you

Correlation: Total & Sedgwick County Programs (Adult)

Total Annual ADP: 2012 - Present



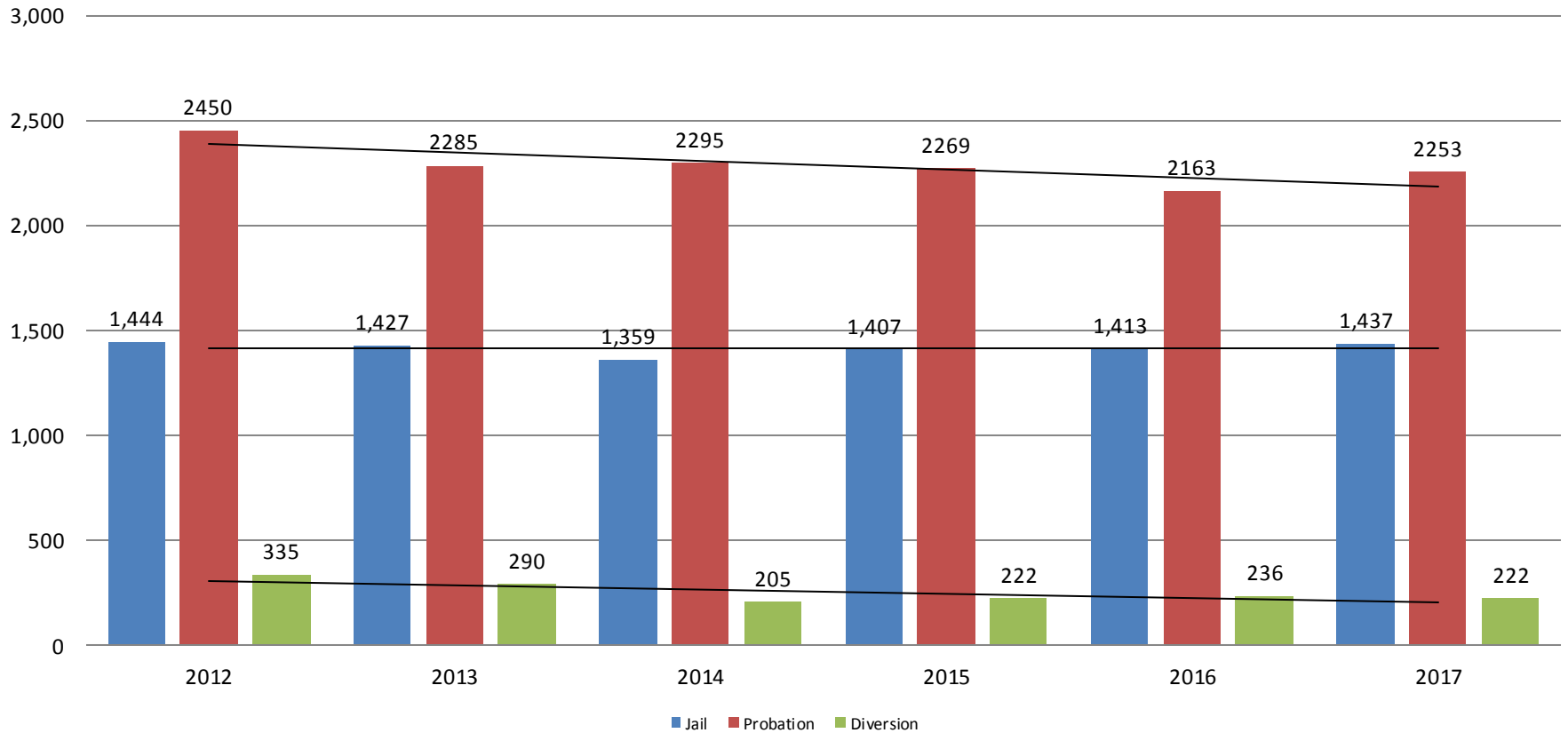
Jail includes individuals in booking, detention, work release and out-of county (combined)

(data obtained from detention facility, SG Dept. of Corrections, Pretrial Services, & CoW)



Correlation: Total & District Court Programs

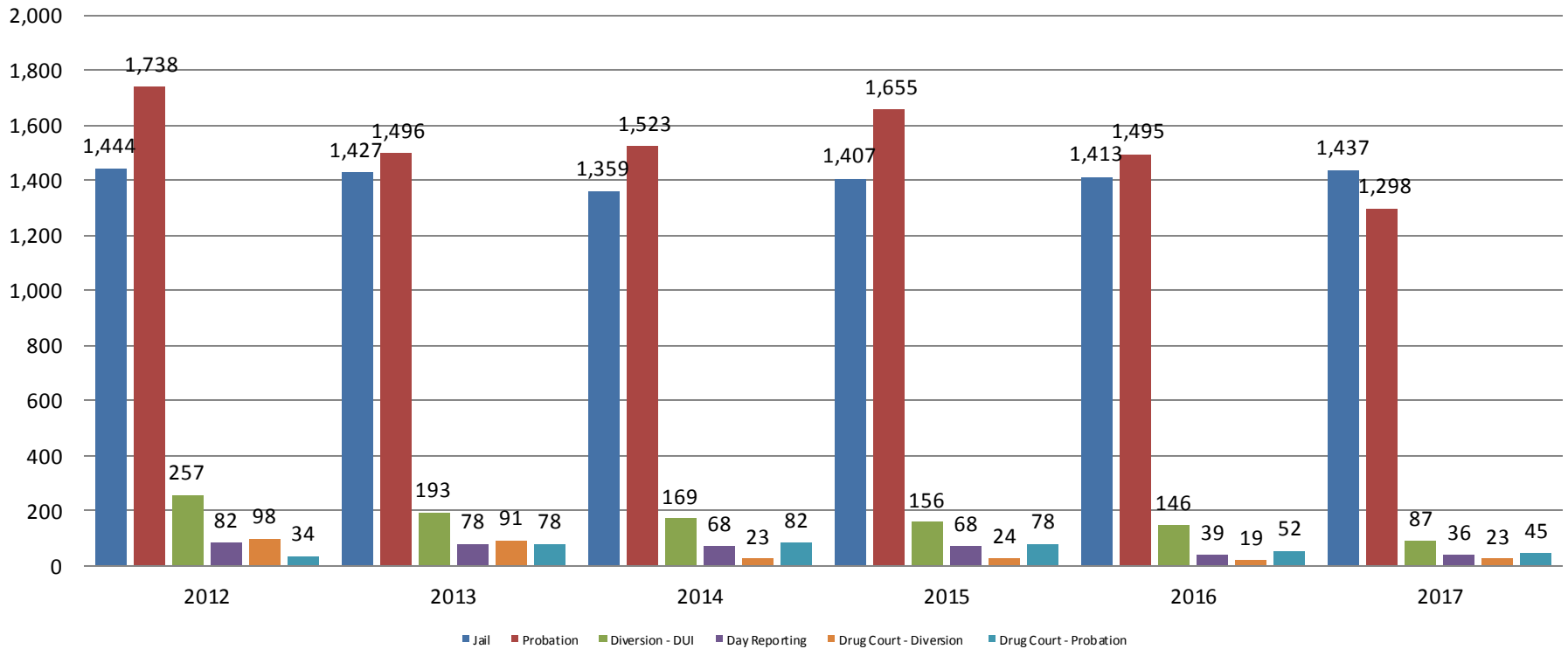
Total Annual ADP: 2012 - Present



Jail includes individuals in booking, detention, work release and out-of county (combined)

Correlation: Total & City of Wichita / Municipal Court Programs

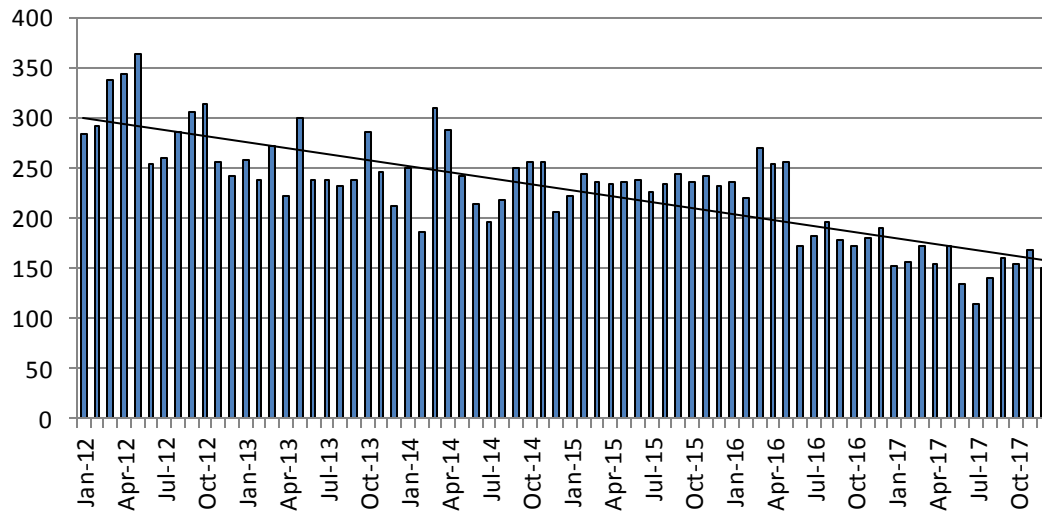
Total Annual ADP: 2012 - present



Jail includes individuals in booking, detention, work release and out-of county (combined)

Juvenile

JIAC Intakes: 2012 - present



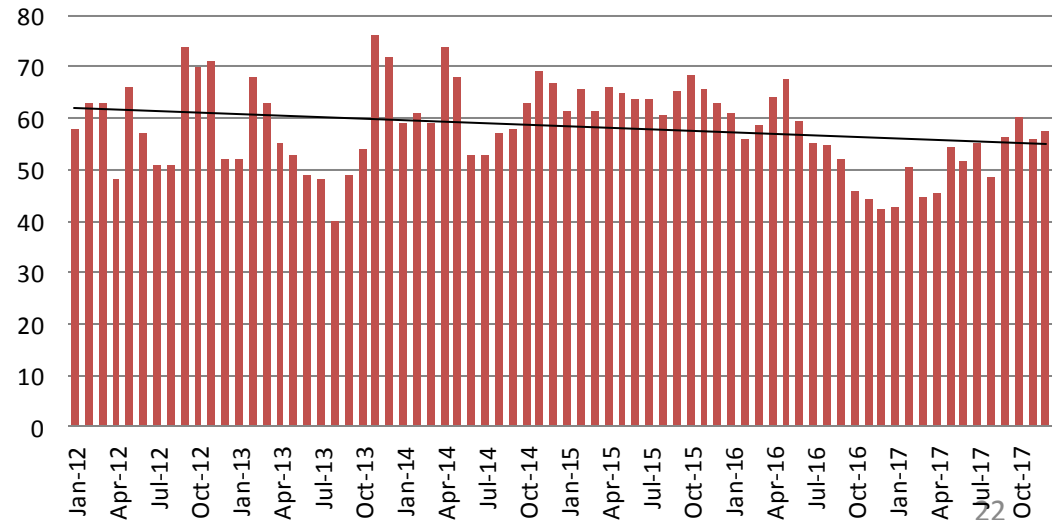
<u>Dec.</u>	<u>Dec. YTD Average</u>
2013 = 211	2013 = 248
2014 = 206	2014 = 239
2015 = 232	2015 = 235
2016 = 190	2016 = 209
2017 = 151	2017 = 153

(data obtained from SG CO Dept. of Corrections)

<u>Dec.</u>	<u>Dec. YTD Avg.</u>
2013 = 72	2013 = 57
2014 = 67	2014 = 62
2015 = 63	2015 = 64
2016 = 42	2016 = 55
2017 = 57	2017 = 52

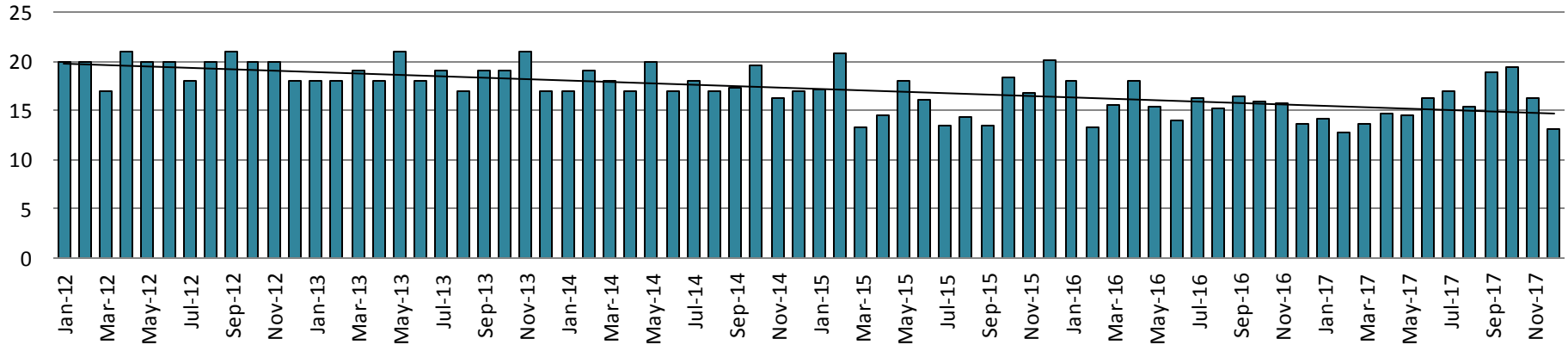
(data obtained from SG CO Dept. of Corrections)

JDF ADP: 2012 - present

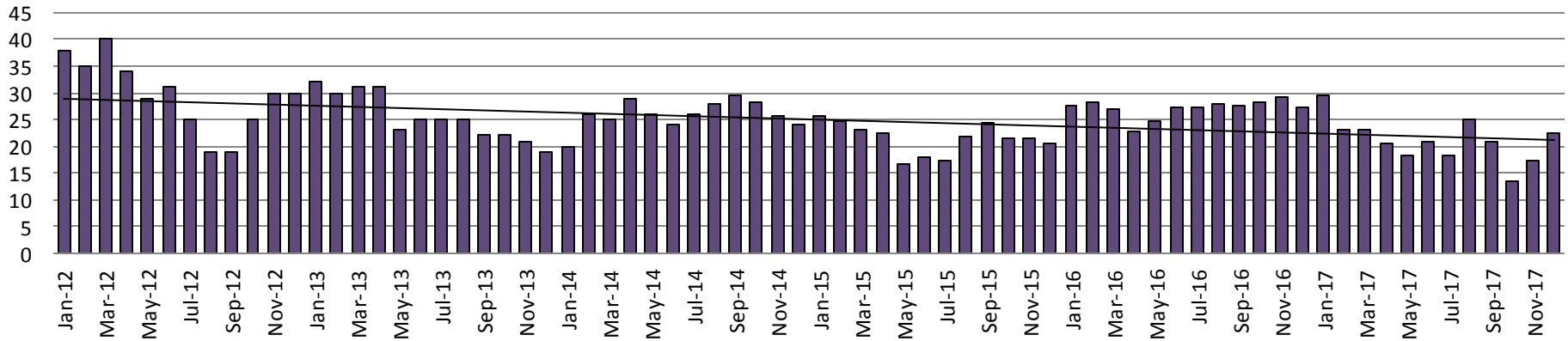


Juvenile Detention Alternatives

Juvenile Residential Facility (JRF) ADP: 2012 - present

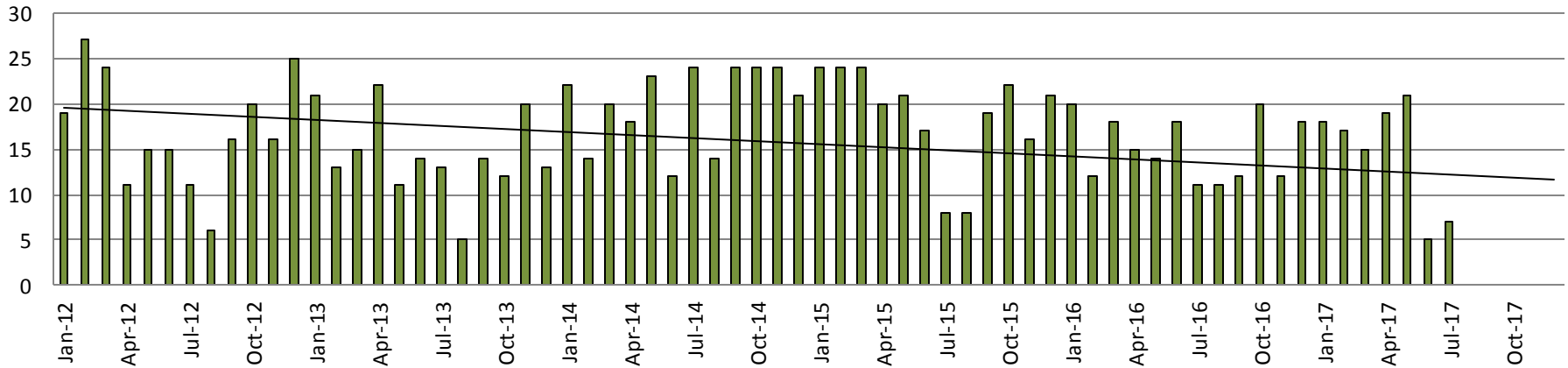


Home-Based Supervision ADP: 2012 - present

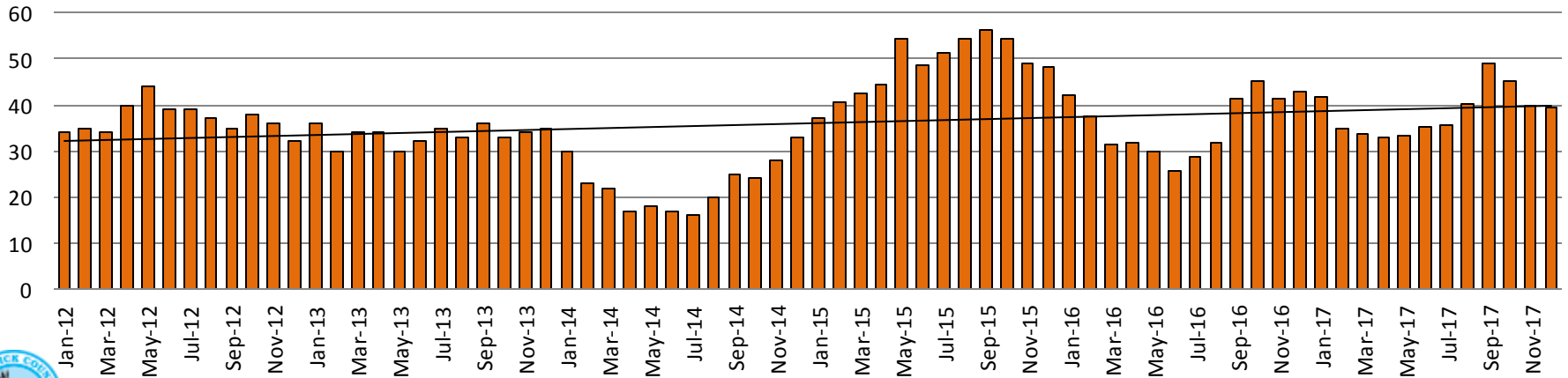


Juvenile Detention Alternatives

Weekend Alternative Detention Program 2012 - present



Detention Advocacy Case Management Services ADP: 2012 - present



Juvenile Detention Services

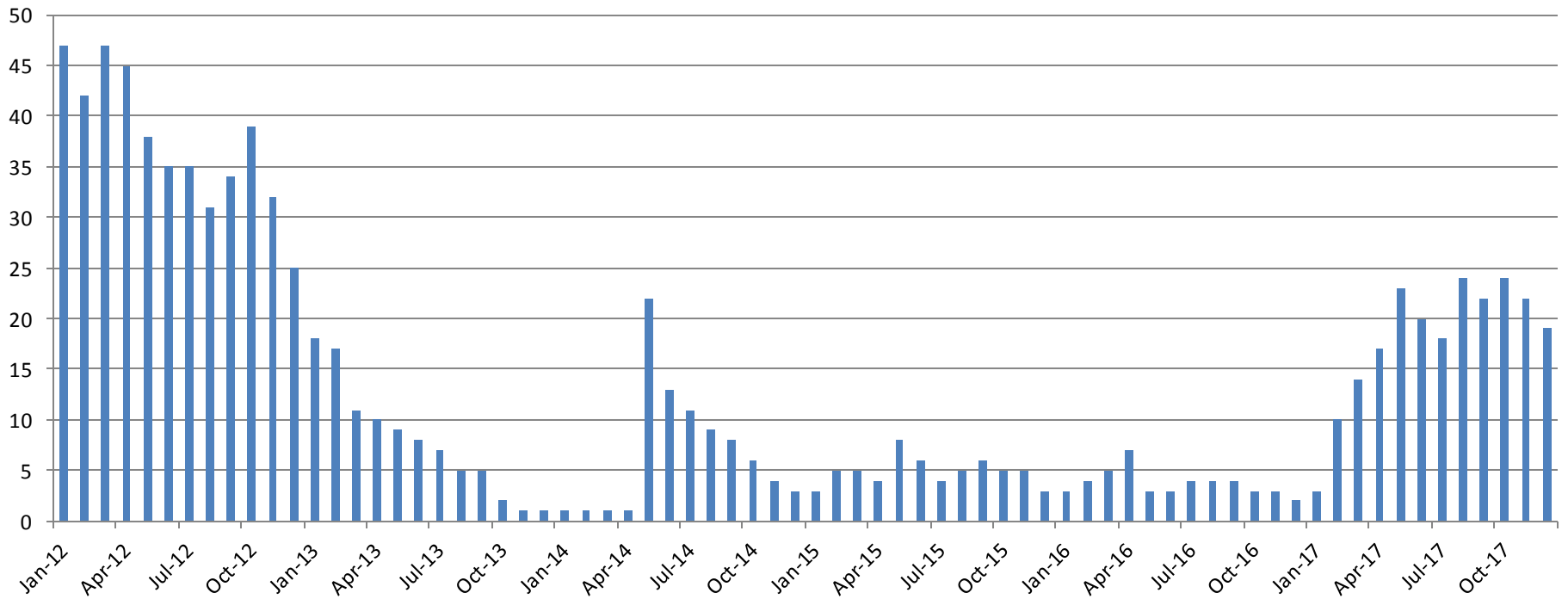
December ADP	2014	2015	2016	2017
Juvenile Detention Facility	67	63	42	57
Juvenile Residential Facility	17	20	14	13
Home Based Supervision	24	21	27	22
Detention Advocacy Case Management Services	33	48	43	40
Weekend Alternative Detention Program (total)	21	21	18	0

December YTD AVERAGE	2014	2015	2016	2017
Juvenile Detention Facility	62	64	55	52
Juvenile Residential Facility	18	16	16	15
Home Based Supervision	26	21	27	21
Detention Advocacy Case Management Services	23	48	36	38
Weekend Alternative Detention Program	20	19	15	9



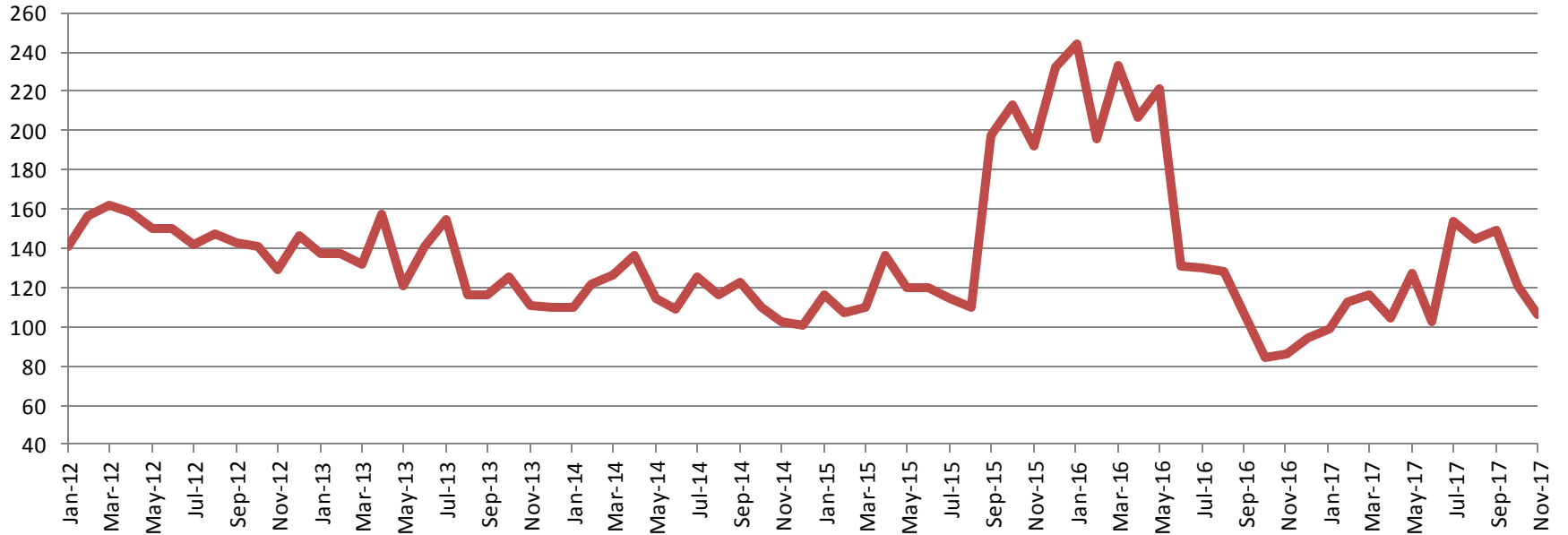
Monthly Jail Snapshot: December 31, 2017

BICE Holds 2012-Present



Monthly Jail Snapshot: December 31, 2017

Felony Commitments: February 2012 - present

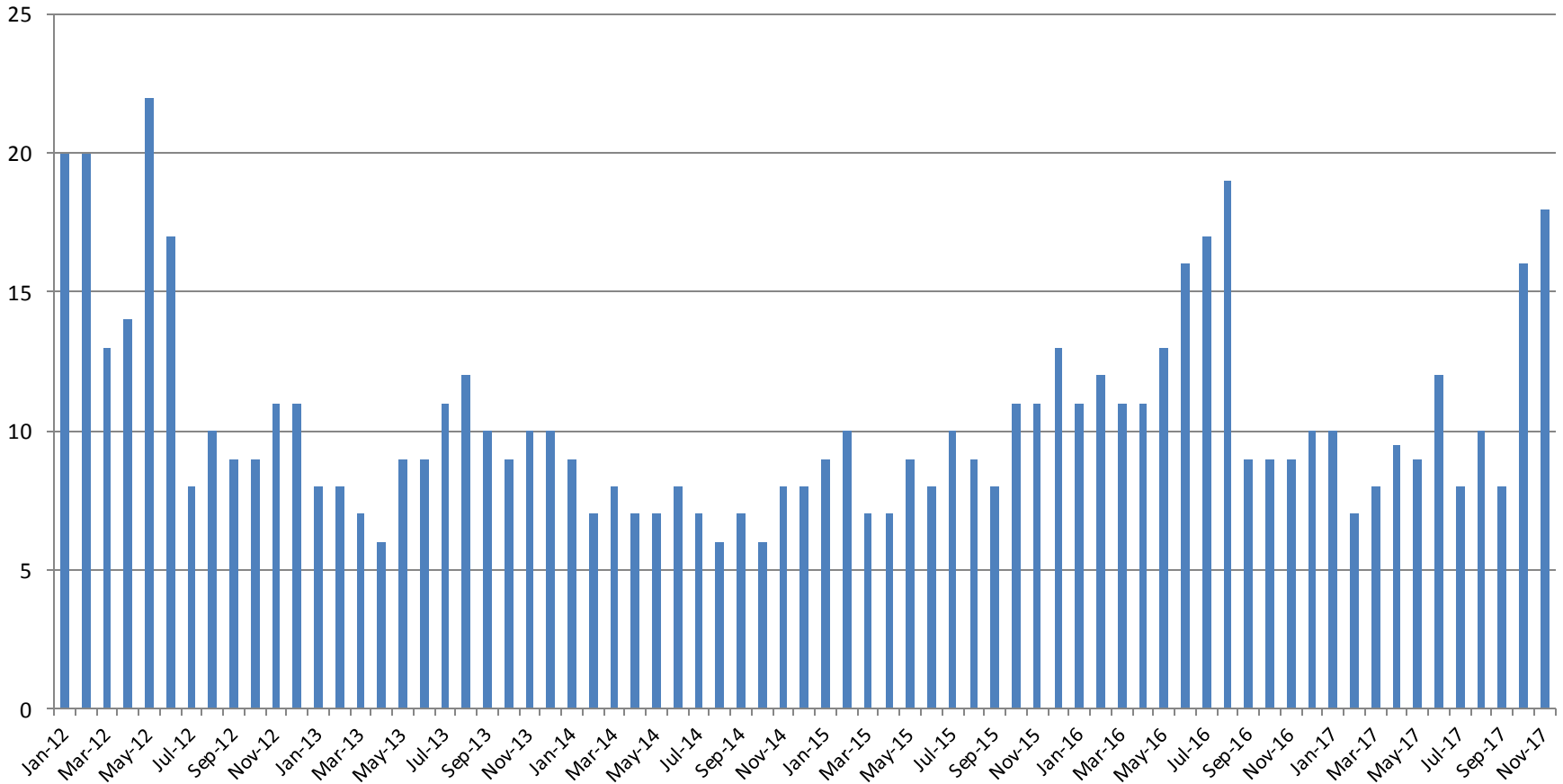


December:

2012 = 129	2015 = 192
2013 = 111	2016 = 86
2014 = 103	2017 = 106

(data obtained from SG CO DIO)

Journal Entry Completion (Average Days) January 2013-Present



This data is always reported a month behind

