

# Department on Aging - Housing

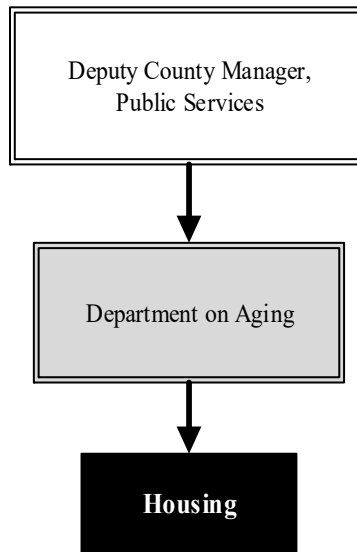
***Mission:*** Sedgwick County Housing Department works to build healthy communities by increasing safe, fair, and affordable housing options for families and individuals living on very low to moderate incomes.

**Annette Graham**  
**Director**

2622 W. Central Ave., Suite 500  
 Wichita, KS 67203  
 316.660.5221  
[annette.graham@sedgwick.gov](mailto:annette.graham@sedgwick.gov)

## Overview

Effective January 1, 2018, the Department on Aging - Housing consolidated with the City of Wichita's Housing program. The program is now named City of Wichita Housing & Community Services. The new location is 455 N. Main St., 10th floor, Wichita, KS 67202. The program can be reached at (316) 462-3700.



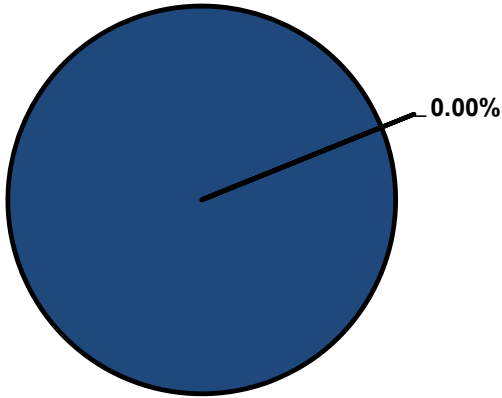
## Significant Budget Adjustments

Funding for the Department on Aging - Housing program was eliminated in the 2018 budget.

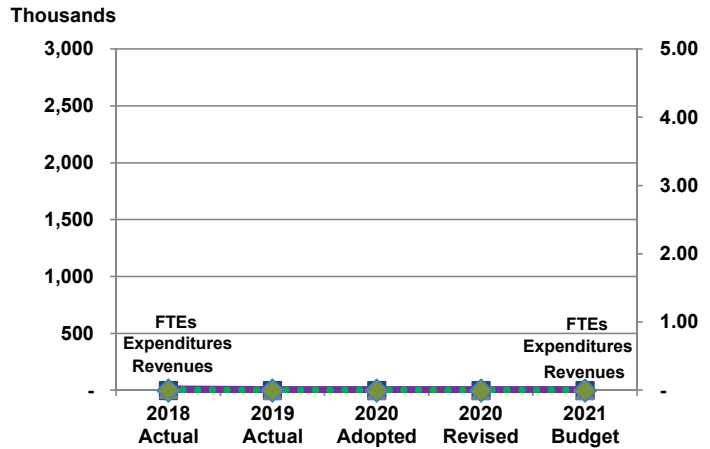


**Departmental Graphical Summary**

**Housing**  
Percent of Total County Operating Budget



**Expenditures, Program Revenue & FTEs**  
All Operating Funds



**Budget Summary by Category**

|  | 2018<br>Actual | 2019<br>Actual | 2020<br>Adopted | 2020<br>Revised | 2021<br>Budget | Amount Chg<br>'20 Rev.-'21 | % Chg<br>'20 Rev.-'21 |
|--|----------------|----------------|-----------------|-----------------|----------------|----------------------------|-----------------------|
| <b>Expenditures</b>                    |                |                |                 |                 |                |                            |                       |
| Personnel                              | -              | -              | -               | -               | -              | -                          | -                     |
| Contractual Services                   | (3,391)        | -              | -               | -               | -              | -                          | -                     |
| Debt Service                           | -              | -              | -               | -               | -              | -                          | -                     |
| Commodities                            | -              | -              | -               | -               | -              | -                          | -                     |
| Capital Improvements                   | -              | -              | -               | -               | -              | -                          | -                     |
| Capital Equipment                      | -              | -              | -               | -               | -              | -                          | -                     |
| Interfund Transfers                    | -              | -              | -               | -               | -              | -                          | -                     |
| <b>Total Expenditures</b>              | <b>(3,391)</b> | <b>-</b>       | <b>-</b>        | <b>-</b>        | <b>-</b>       | <b>-</b>                   | <b>-</b>              |
| <b>Revenues</b>                        |                |                |                 |                 |                |                            |                       |
| Tax Revenues                           | -              | -              | -               | -               | -              | -                          | -                     |
| Licenses and Permits                   | -              | -              | -               | -               | -              | -                          | -                     |
| Intergovernmental                      | (6,245)        | -              | -               | -               | -              | -                          | -                     |
| Charges for Services                   | -              | -              | -               | -               | -              | -                          | -                     |
| All Other Revenue                      | 13,688         | -              | -               | -               | -              | -                          | -                     |
| <b>Total Revenues</b>                  | <b>7,443</b>   | <b>-</b>       | <b>-</b>        | <b>-</b>        | <b>-</b>       | <b>-</b>                   | <b>-</b>              |
| <b>Full-Time Equivalentents (FTEs)</b> |                |                |                 |                 |                |                            |                       |
| Property Tax Funded                    | -              | -              | -               | -               | -              | -                          | -                     |
| Non-Property Tax Funded                | -              | -              | -               | -               | -              | -                          | -                     |
| <b>Total FTEs</b>                      | <b>-</b>       | <b>-</b>       | <b>-</b>        | <b>-</b>        | <b>-</b>       | <b>-</b>                   | <b>-</b>              |

**Budget Summary by Fund**

| Fund                      | 2018<br>Actual | 2019<br>Actual | 2020<br>Adopted | 2020<br>Revised | 2021<br>Budget | Amount Chg<br>'20 Rev.-'21 | % Chg<br>'20 Rev.-'21 |
|---------------------------|----------------|----------------|-----------------|-----------------|----------------|----------------------------|-----------------------|
| HUD Grants                | (3,391)        | -              | -               | -               | -              | -                          | -                     |
| <b>Total Expenditures</b> | <b>(3,391)</b> | <b>-</b>       | <b>-</b>        | <b>-</b>        | <b>-</b>       | <b>-</b>                   | <b>-</b>              |

**Significant Budget Adjustments from Prior Year Revised Budget**

Expenditures      Revenues      FTEs

**Total**      -      -      -

**Budget Summary by Program**

| Program       | Fund | 2018 Actual    | 2019 Actual | 2020 Adopted | 2020 Revised | 2021 Budget | % Chg '20 Rev.-'21 | 2021 FTEs |
|---------------|------|----------------|-------------|--------------|--------------|-------------|--------------------|-----------|
| HUD Section 8 | 272  | (3,391)        | -           | -            | -            | -           | 0.00%              | -         |
| <b>Total</b>  |      | <b>(3,391)</b> | <b>-</b>    | <b>-</b>     | <b>-</b>     | <b>-</b>    | <b>0.00%</b>       | <b>-</b>  |

### • HUD Section 8

The Housing Authority was the core program of the Housing Program and received federal dollars directly from the U.S. Department of Housing and Urban Development (HUD) to assist more than 330 very low- and extremely low-income families with rental housing and, in some cases, utility payments. The Authority's jurisdiction covered Sedgwick County outside Wichita, and Butler and Harvey Counties.

#### Fund(s): Hud - Grants 272

| Expenditures                        | 2018<br>Actual | 2019<br>Actual | 2020<br>Adopted | 2020<br>Revised | 2021<br>Budget | Amnt. Chg.<br>'20 - '21 | % Chg.<br>'20 - '21 |
|-------------------------------------|----------------|----------------|-----------------|-----------------|----------------|-------------------------|---------------------|
| Personnel                           | -              | -              | -               | -               | -              | -                       | 0.0%                |
| Contractual Services                | (3,391)        | -              | -               | -               | -              | -                       | 0.0%                |
| Debt Service                        | -              | -              | -               | -               | -              | -                       | 0.0%                |
| Commodities                         | -              | -              | -               | -               | -              | -                       | 0.0%                |
| Capital Improvements                | -              | -              | -               | -               | -              | -                       | 0.0%                |
| Capital Equipment                   | -              | -              | -               | -               | -              | -                       | 0.0%                |
| Interfund Transfers                 | -              | -              | -               | -               | -              | -                       | 0.0%                |
| <b>Total Expenditures</b>           | <b>(3,391)</b> | -              | -               | -               | -              | -                       | <b>0.0%</b>         |
| <b>Revenues</b>                     |                |                |                 |                 |                |                         |                     |
| Taxes                               | -              | -              | -               | -               | -              | -                       | 0.0%                |
| Intergovernmental                   | (6,245)        | -              | -               | -               | -              | -                       | 0.0%                |
| Charges For Service                 | -              | -              | -               | -               | -              | -                       | 0.0%                |
| All Other Revenue                   | 13,688         | -              | -               | -               | -              | -                       | 0.0%                |
| <b>Total Revenues</b>               | <b>7,443</b>   | -              | -               | -               | -              | -                       | <b>0.0%</b>         |
| <b>Full-Time Equivalents (FTEs)</b> | -              | -              | -               | -               | -              | -                       | <b>0.0%</b>         |