

Criminal Justice Coordinating Council

Population Report & Program Trends

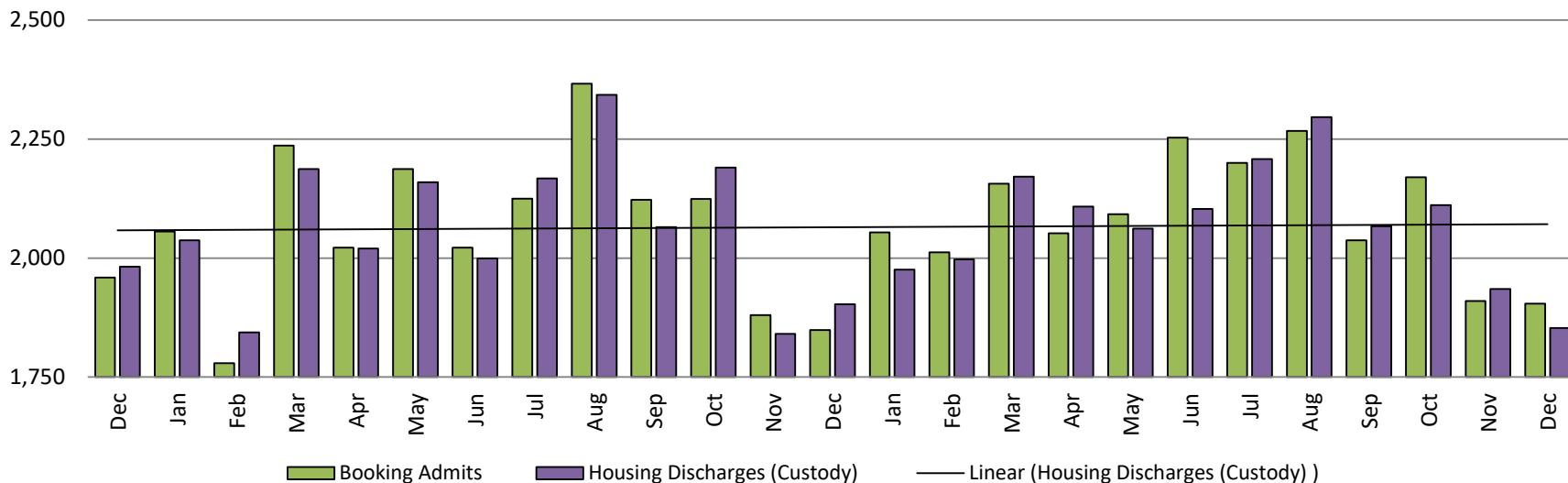
January 2020



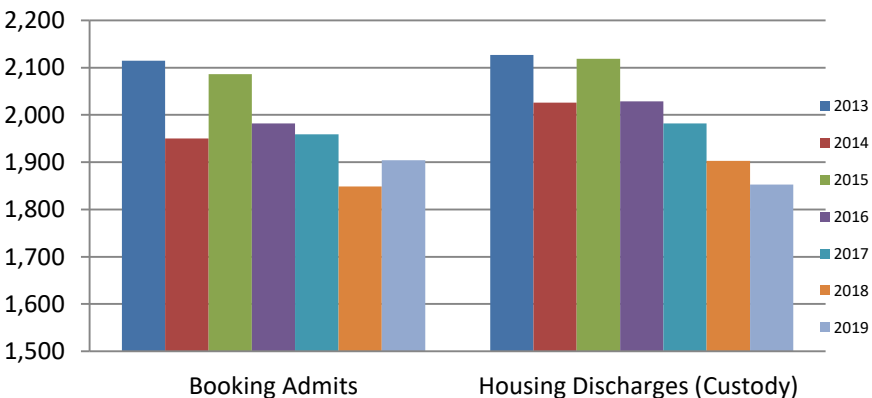
Sedgwick County...
working for you

Detention Facility

Booking Admits & Housing Discharges from Custody December 2017-Present

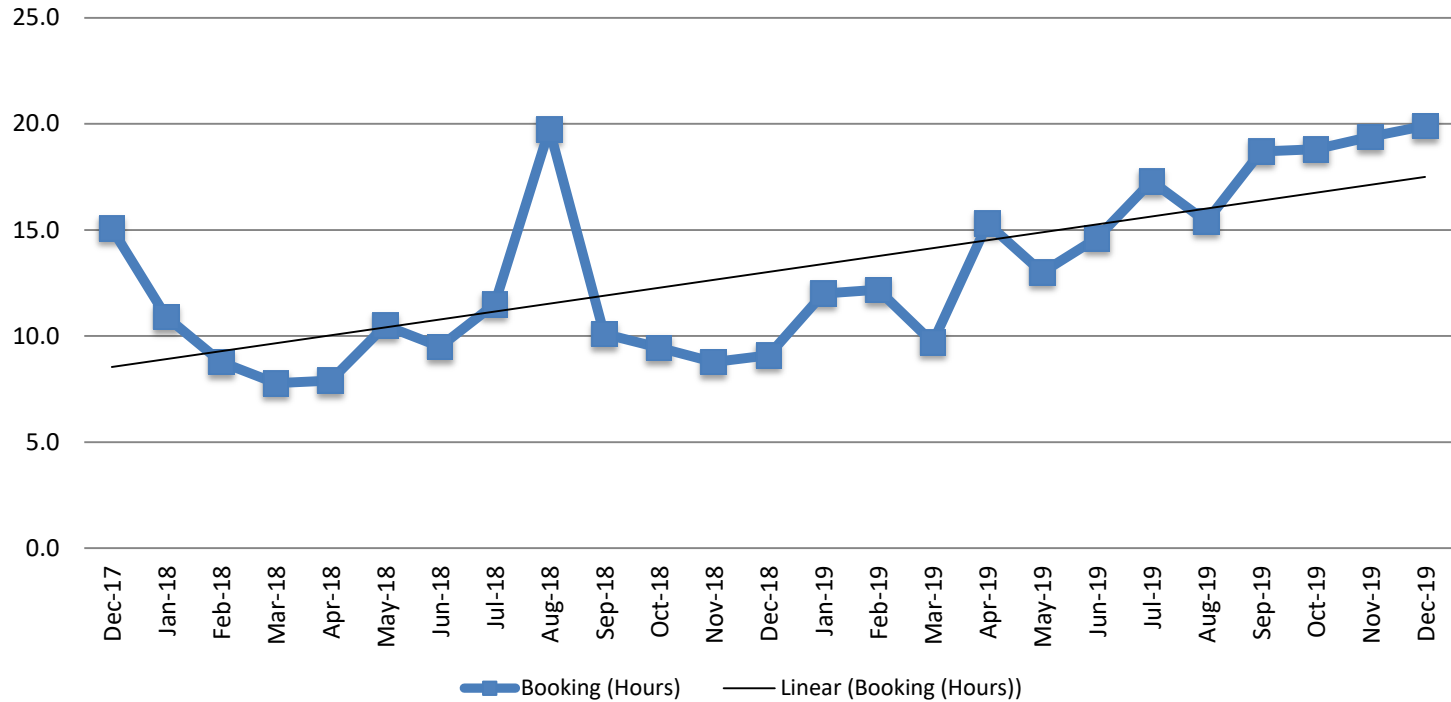


Bookings Year over Year: Month of December



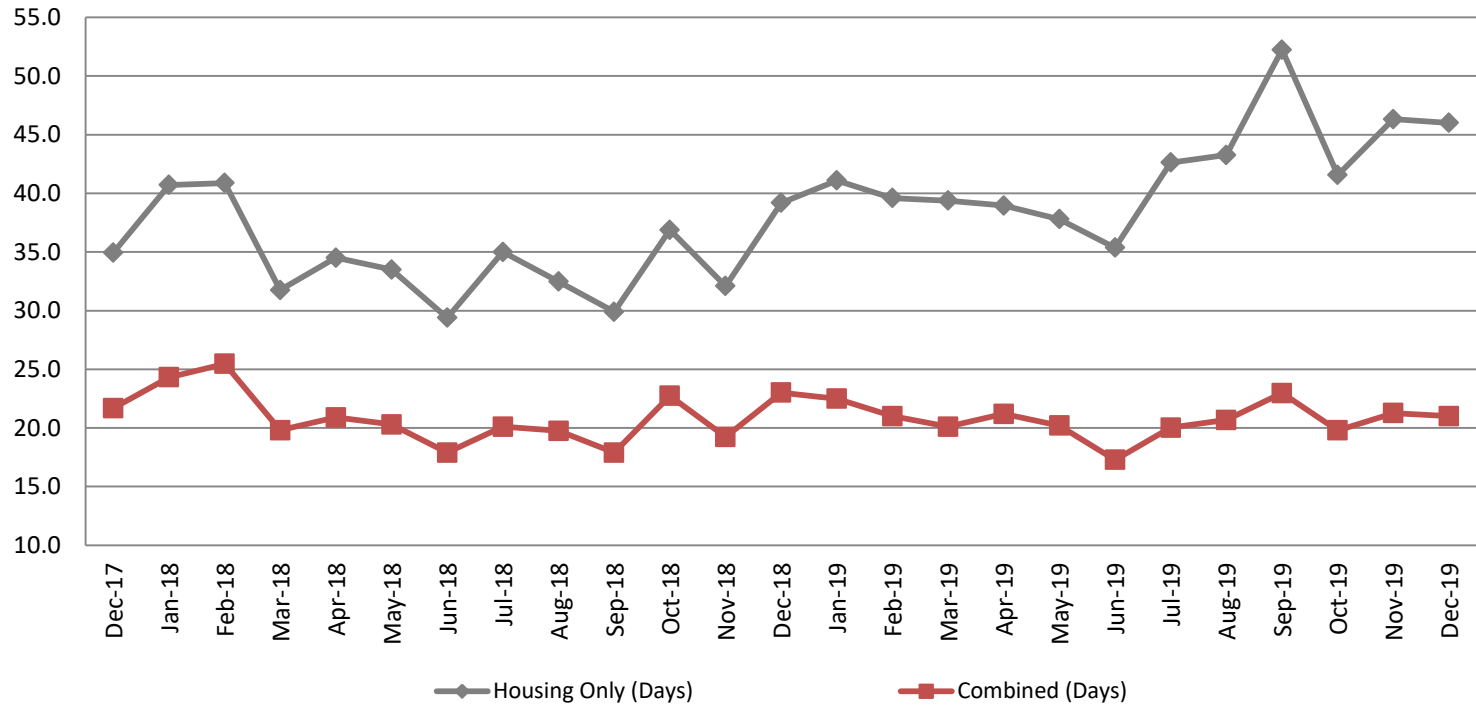
Bookings December	Housing Discharges December
2017: 1,959	2017: 1,982
2018: 1,849	2018: 1,903
2019: 1,904	2019: 1,853

Average Length of Stay: Booking (Hours) December 2017 - Present



December	December YTD Average
2017: 15.1	2017: 16.4
2018: 9.1	2018: 10.3
2019: 19.9	2019: 15.5

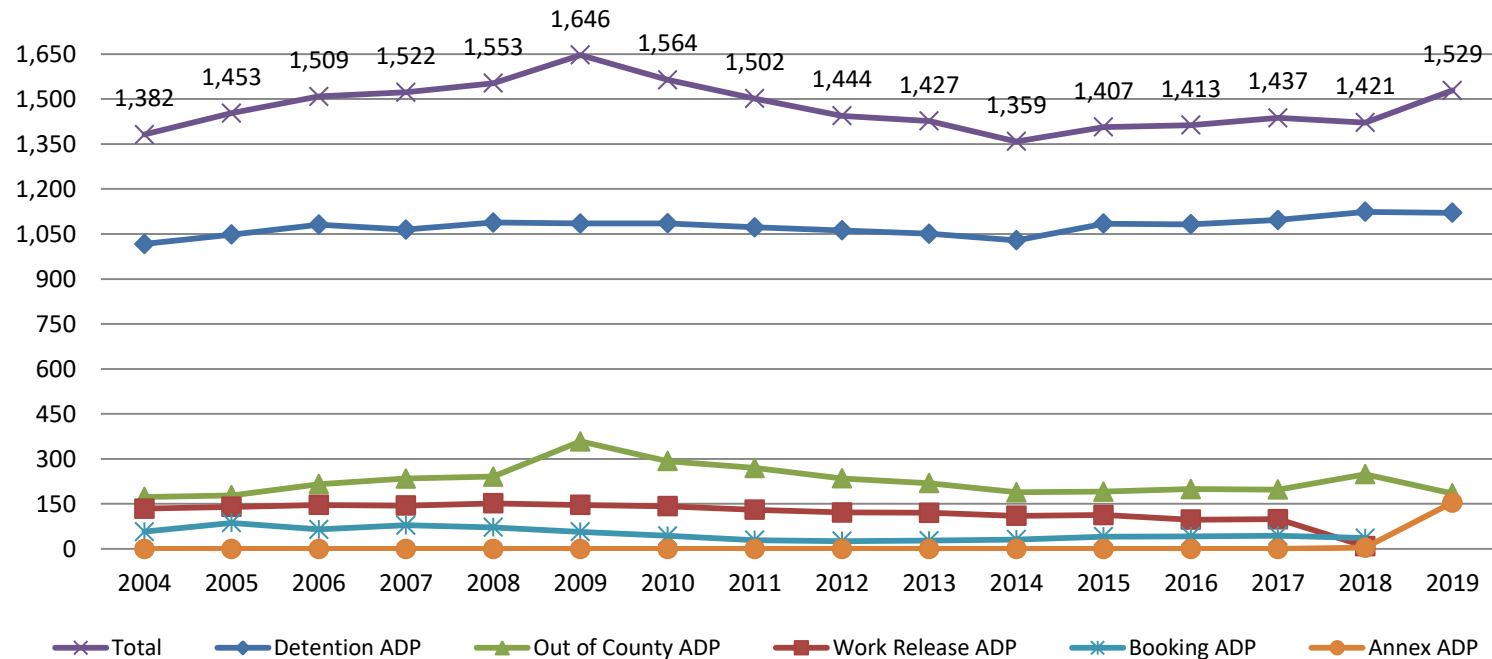
Average Length of Stay: Housing & Combined (Days) December 2017 - Present



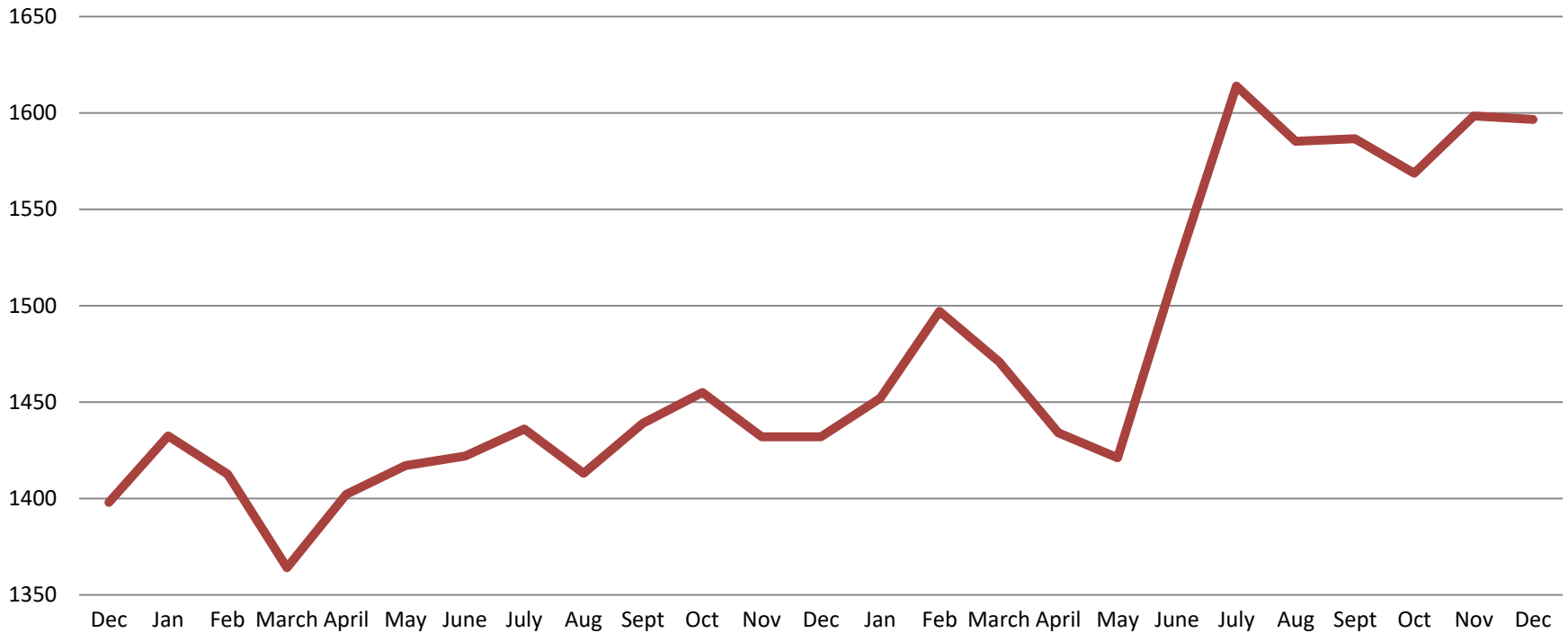
Month Year	Housing Only	Housing YTD AVG	Combined Days	Combined YTD AVG
December 2017	34.9	35.2	21.7	20.5
December 2018	39.2	34.7	23.0	21.0
December 2019	46.0	42.0	21.0	20.7

Jail: Annual Average Daily Population (ADP)

TRENDS: Booking, Detention, Work Release, & Out of County
Annual ADP: 2004 - present

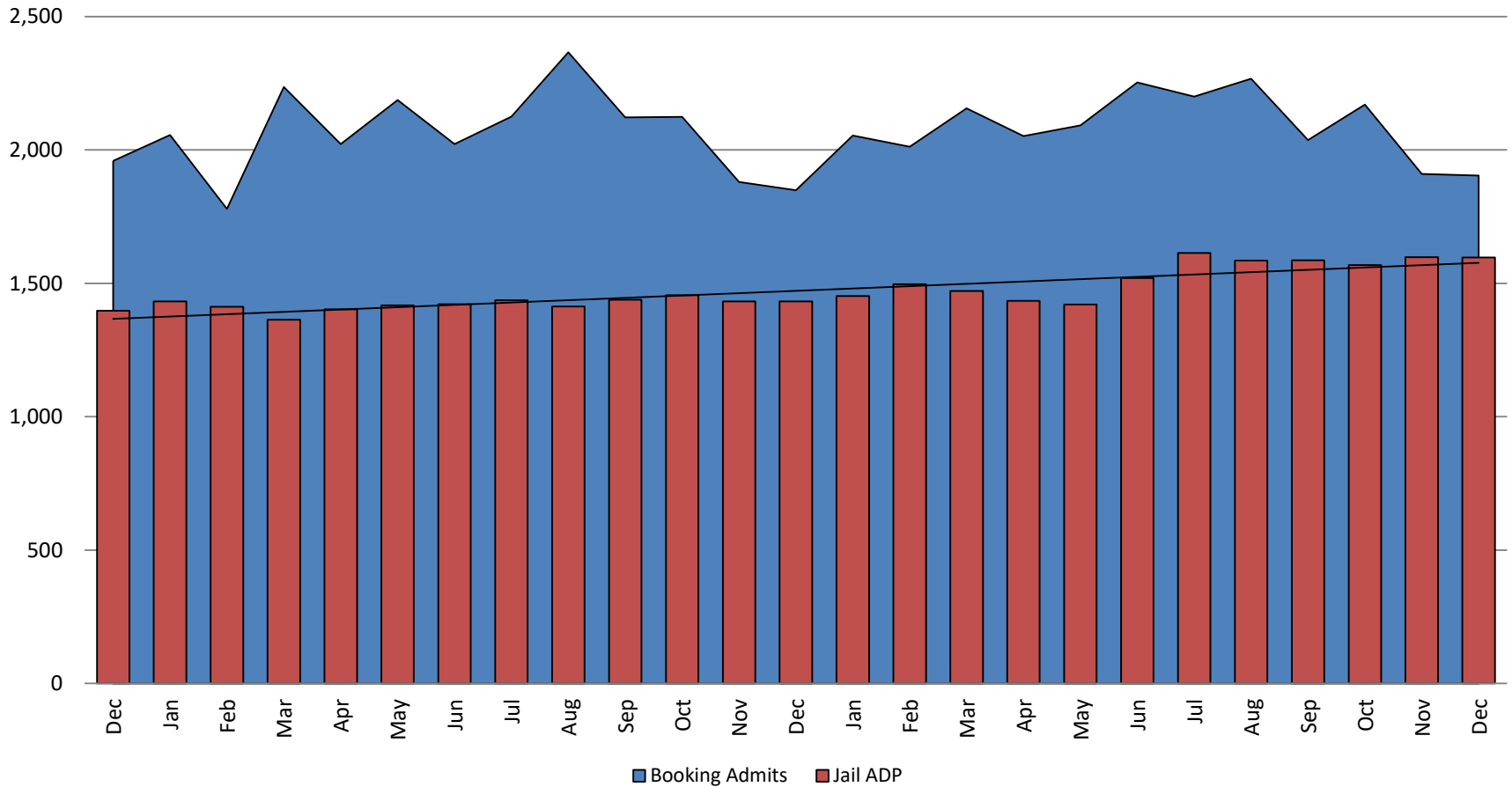


TOTAL MONTHLY ADP: JAIL (Booking, Detention Facility, Annex, & Out of County) December 2017 - present

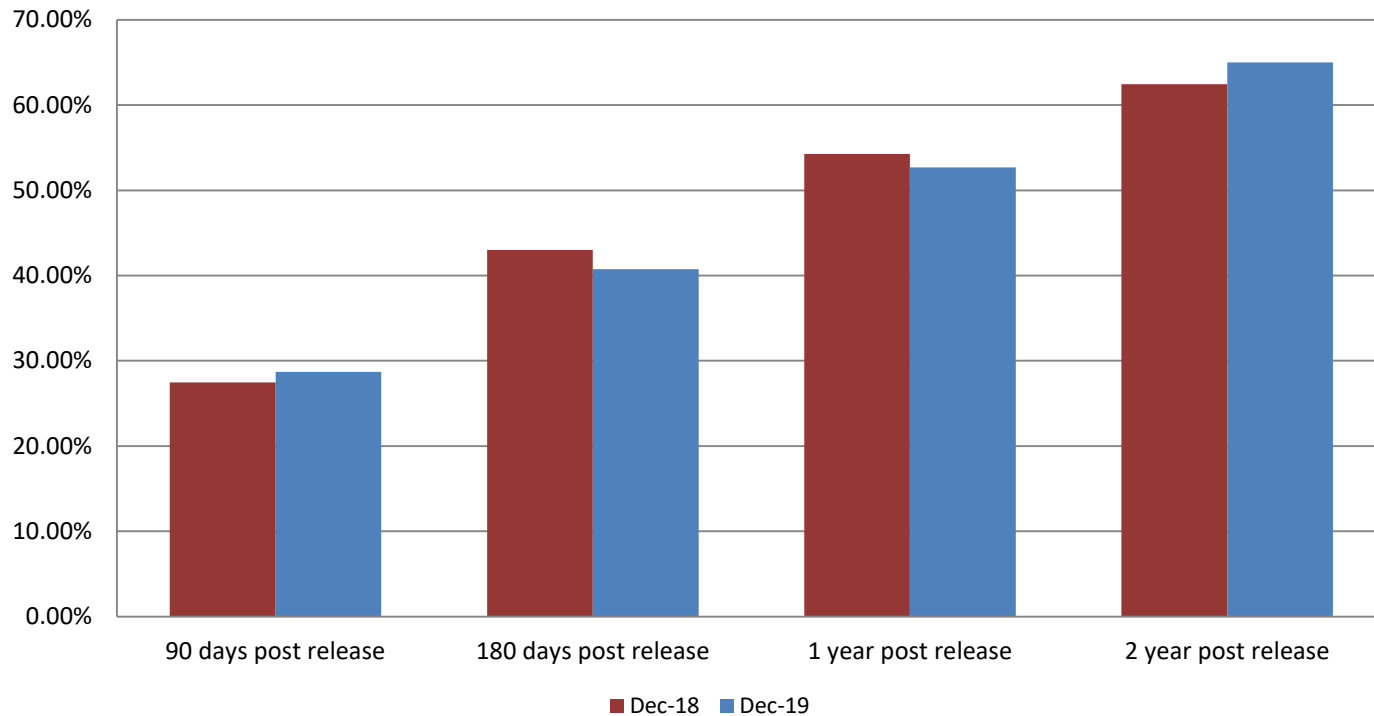


December 2017	December 2018	December 2019
1,398	1,432	1,597

Booking Admits & Total Monthly ADP (Jail): December 2017 - present



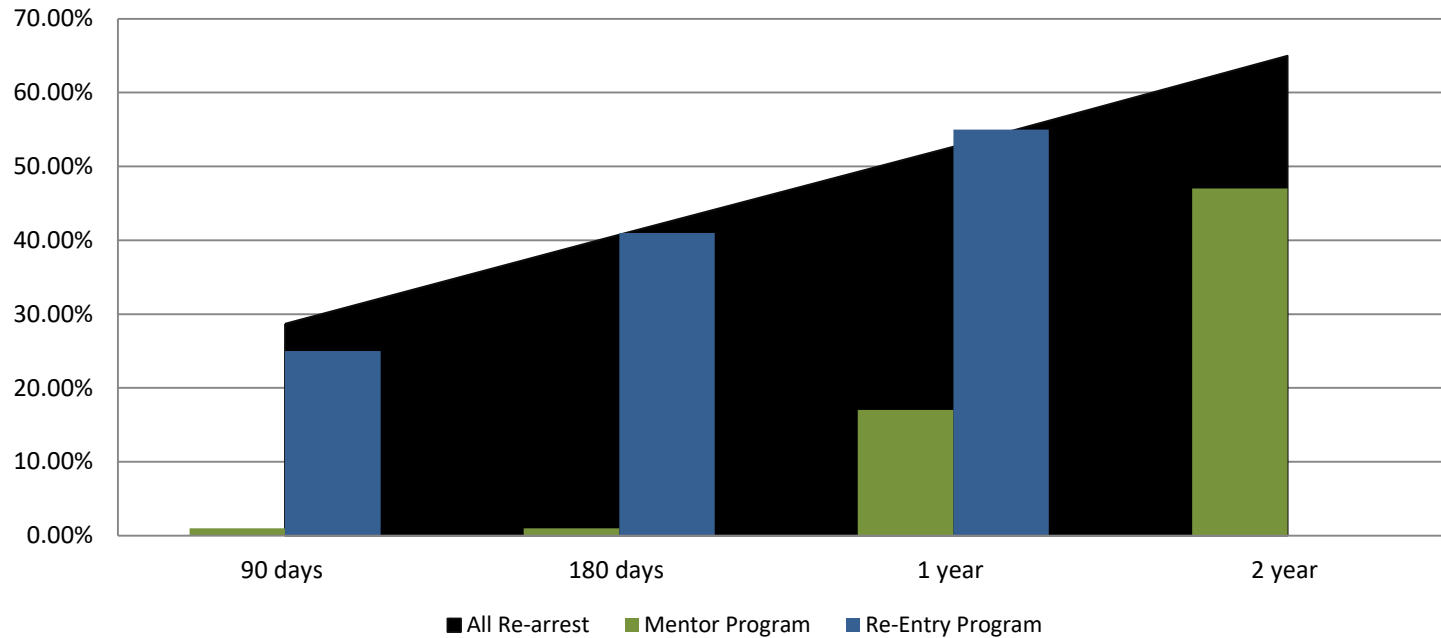
Percent of released inmates rearrested December



Month Year	90 Days	180 Days	1 Year	2 Years
December 2018	27.46%	42.99%	54.27%	62.46%
December 2019	28.69%	40.76%	52.68%	64.99%

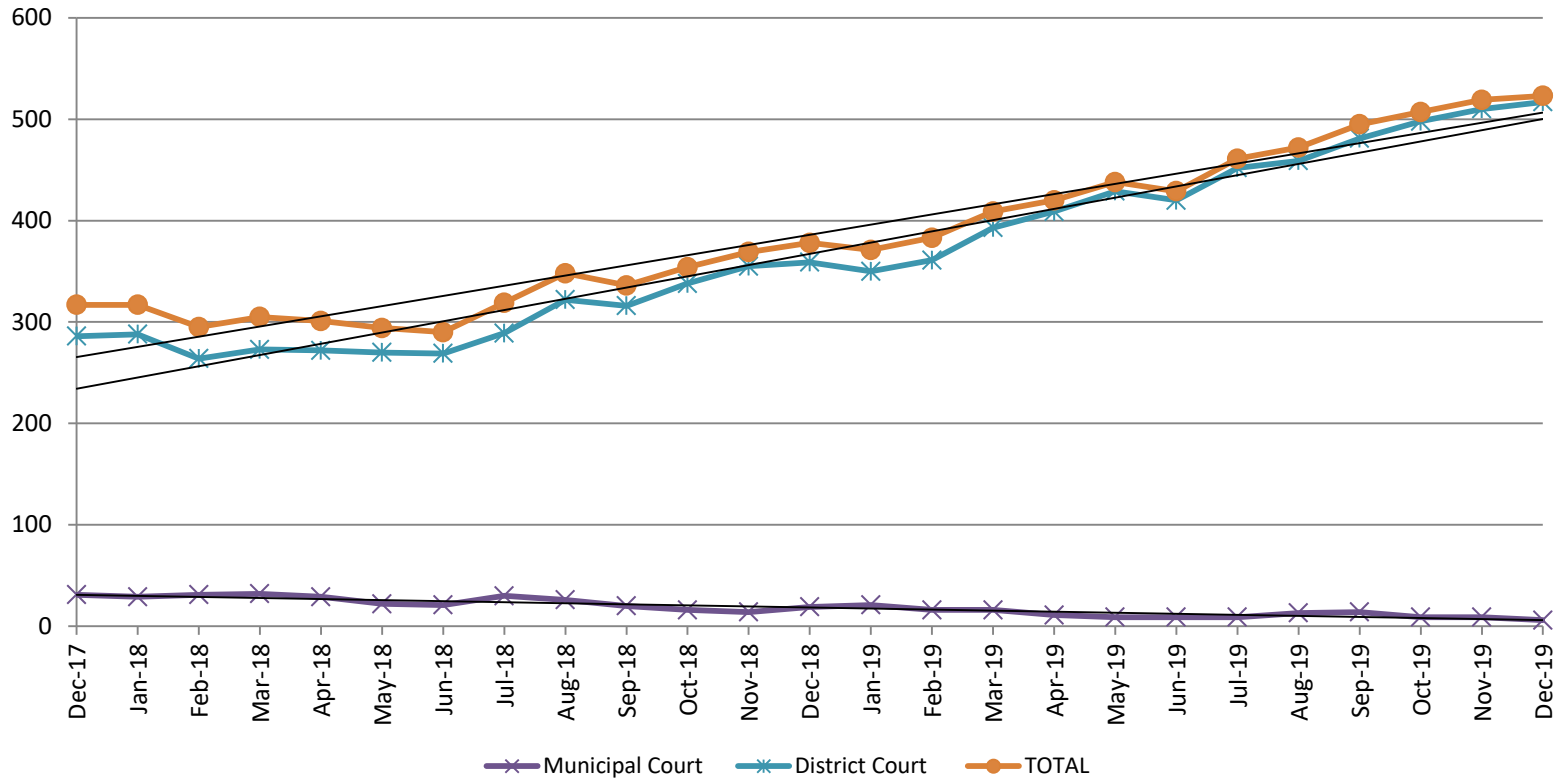


Recidivism by Programs December 2019



December 2019	90 Days	180 Days	1 year	2 years
All Re-arrests	28.69%	40.76%	52.68%	64.99%
Mentor Program	1%	1%	17%	47%
Re-Entry Program	25%	41%	55%	N/A

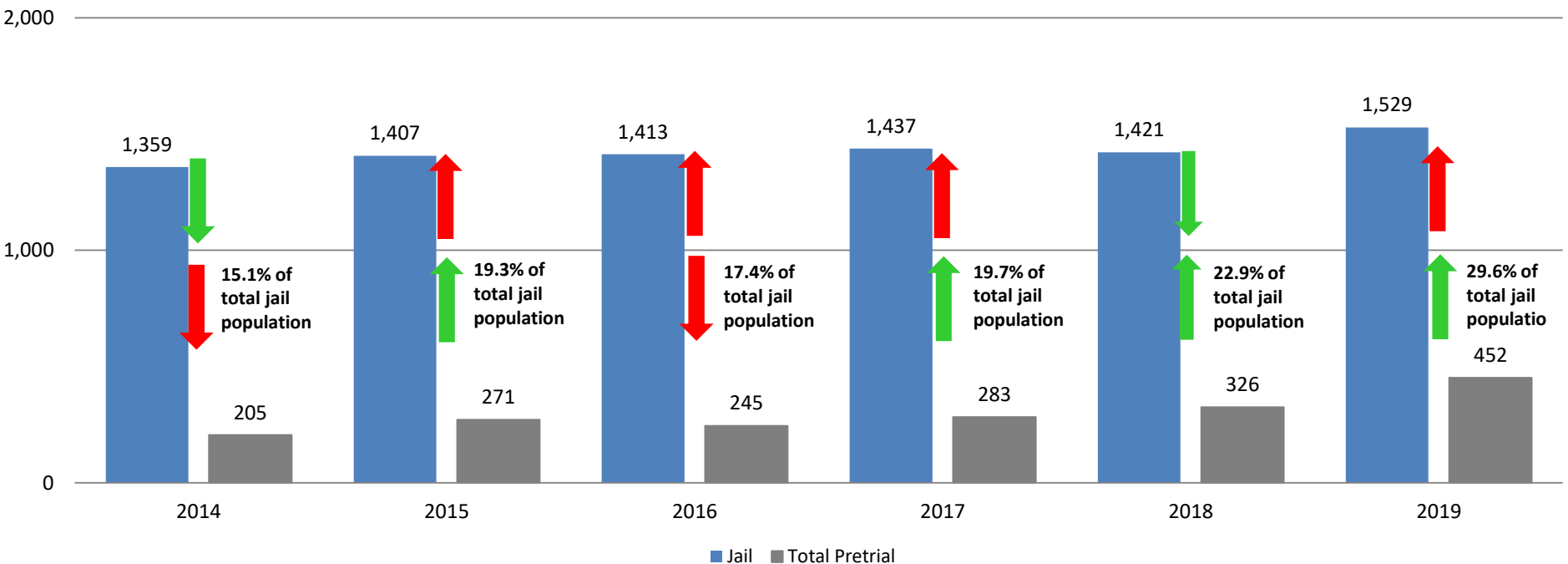
Pretrial Services Program (PSP) Monthly ADP: December 2017 - Present



December	2017 ADP	2018 ADP	2019 ADP	2017 YTD Avg.	2018 YTD Avg.	2019 YTD Avg.
Muni. Court	31	19	6	36	24	12
Dist. Court	286	359	517	247	301	440
Total	317	378	523	283	326	452

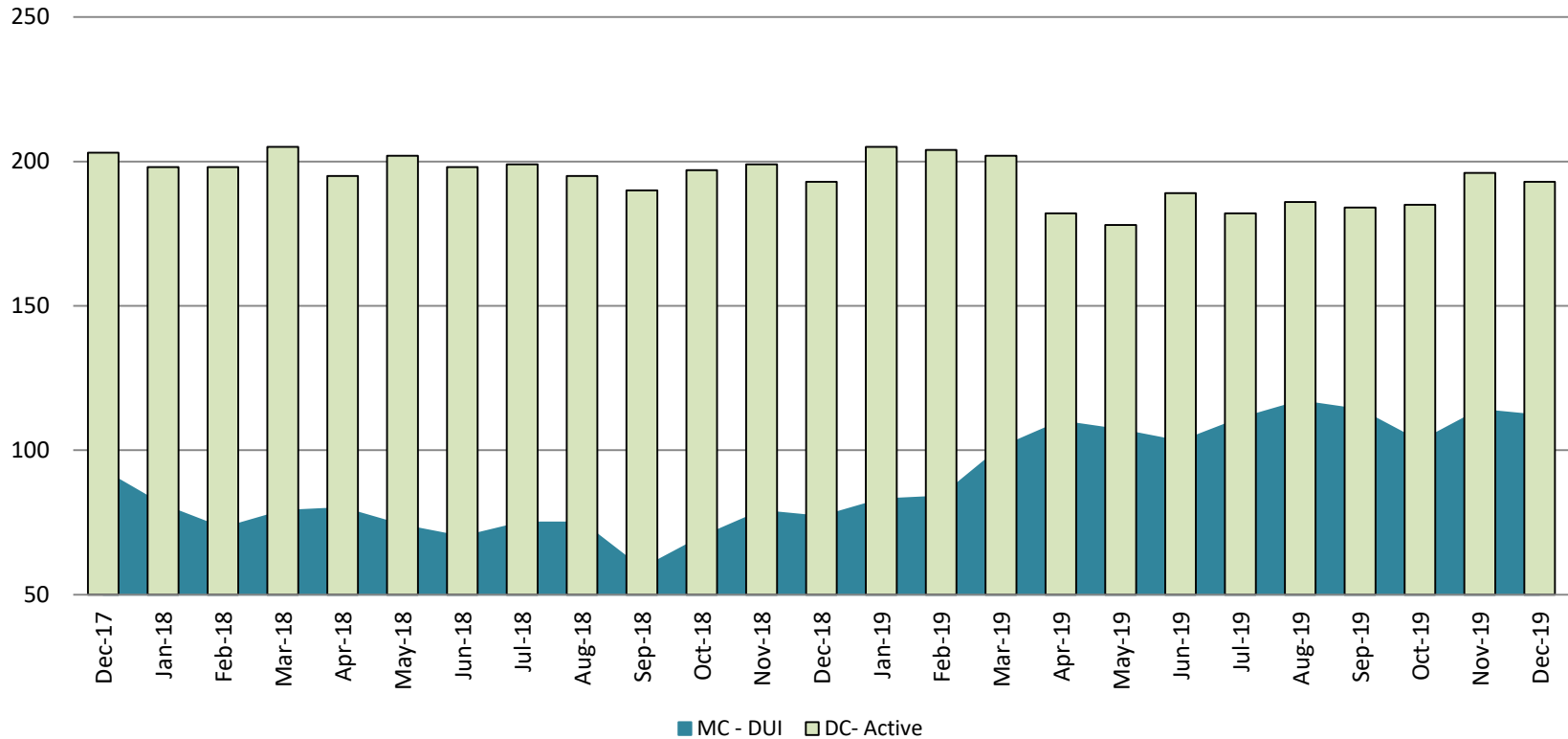
Correlation: Total & PSP

Total Annual ADP: 2014 - Present



Diversion - Active Caseload

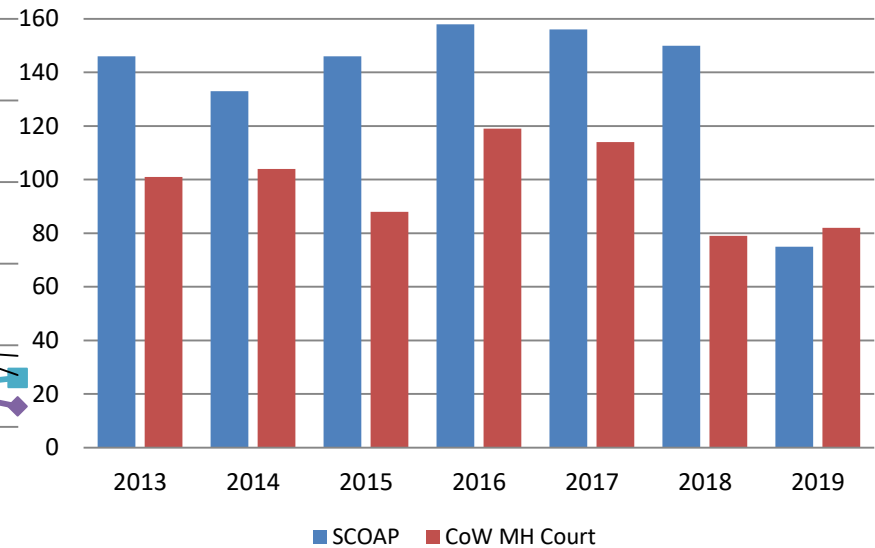
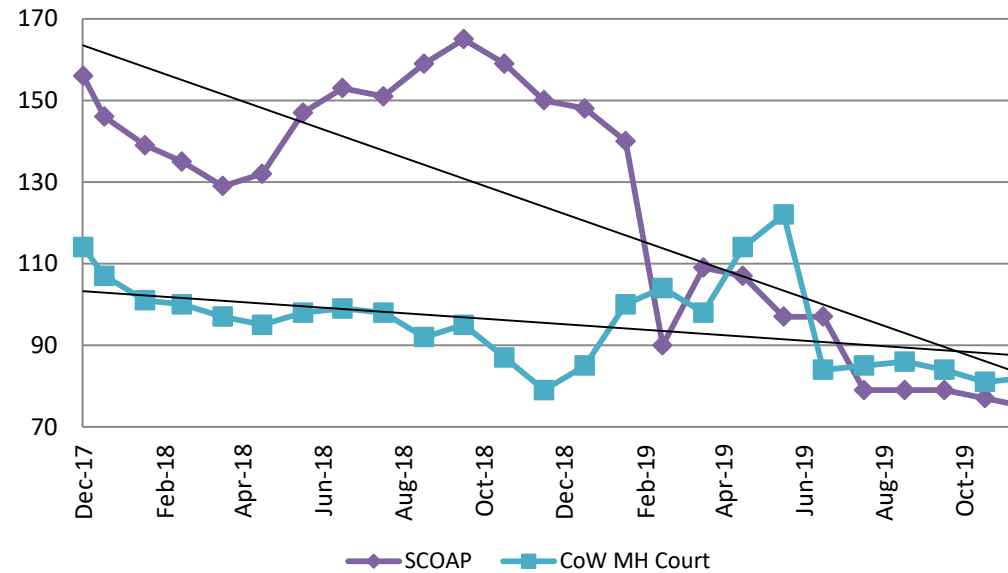
December 2017- Present



December	2017	2018	2019	2017 YTD Avg.	2018 YTD Avg.	2019 YTD Avg.
Muni. Court- DUI	93	77	112	87	74	105
Dist. Court- Active	203	193	193	222	197	191

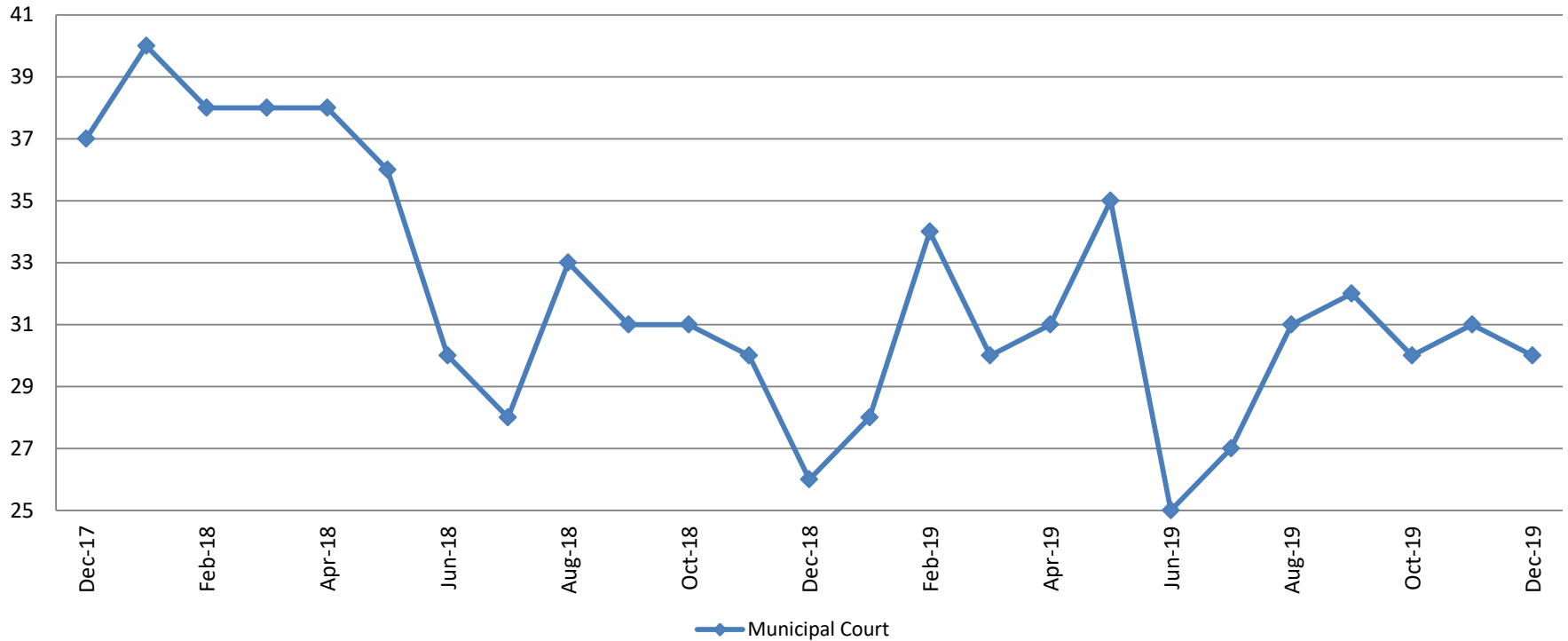
Mental Health - ADP December 2017 - present

Mental Health ADP Year over Year- December



December	2017 ADP	2018 ADP	2019 ADP	2017 YTD Avg.	2018 YTD Avg.	2019 YTD Avg.
SCOAP	156	150	75	150	147	98
MH Court	114	79	82	116	96	94

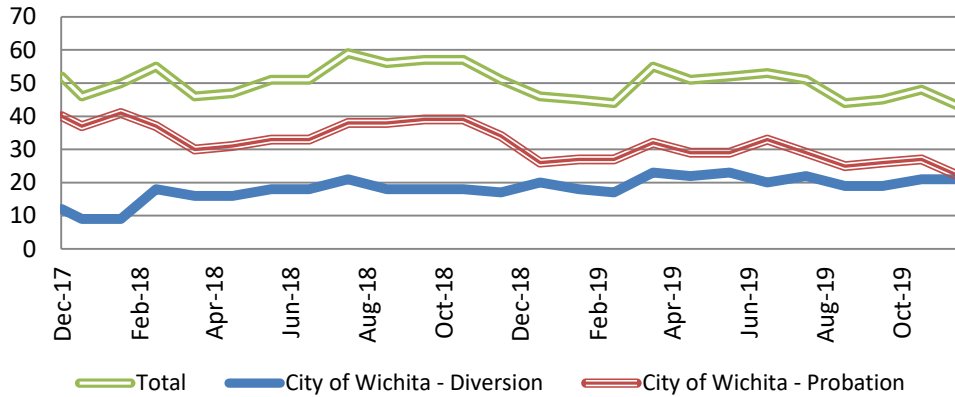
Day Reporting - Active Caseload December 2017 - Present



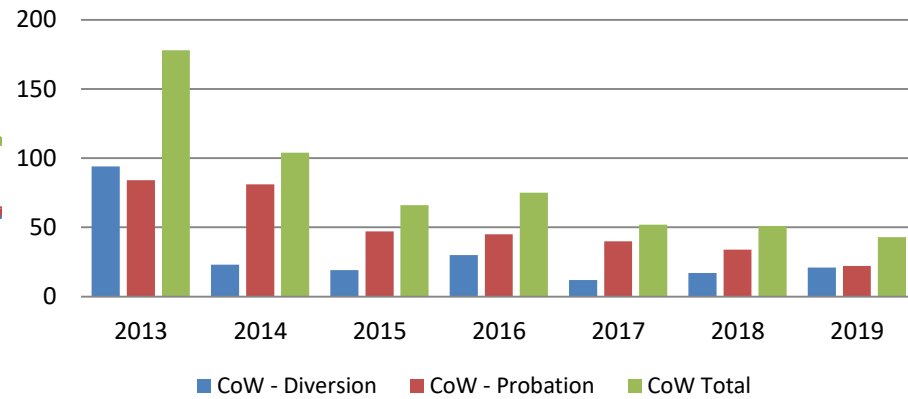
December	2014	2015	2016	2017	2018	2019
Muni. Court	67	57	26	37	26	30
Muni. Court YTD Avg.	68	68	39	36	33	30



Drug Court - City of Wichita ADP: December 2017 - present



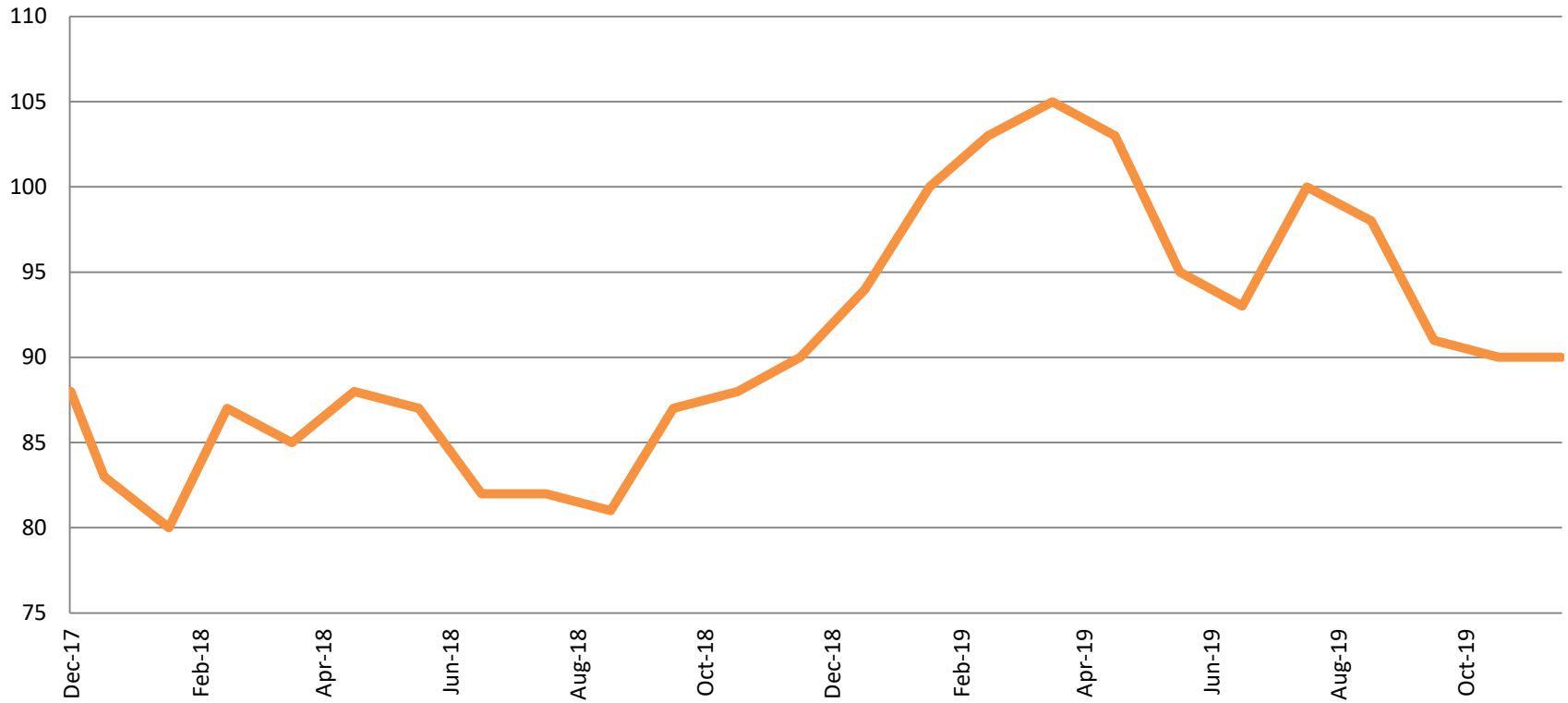
Drug Court- City of Wichita Year over Year - December



December	2017	2018	2019
Diversion	12	17	21
Probation	40	34	22
Total	66	57	43

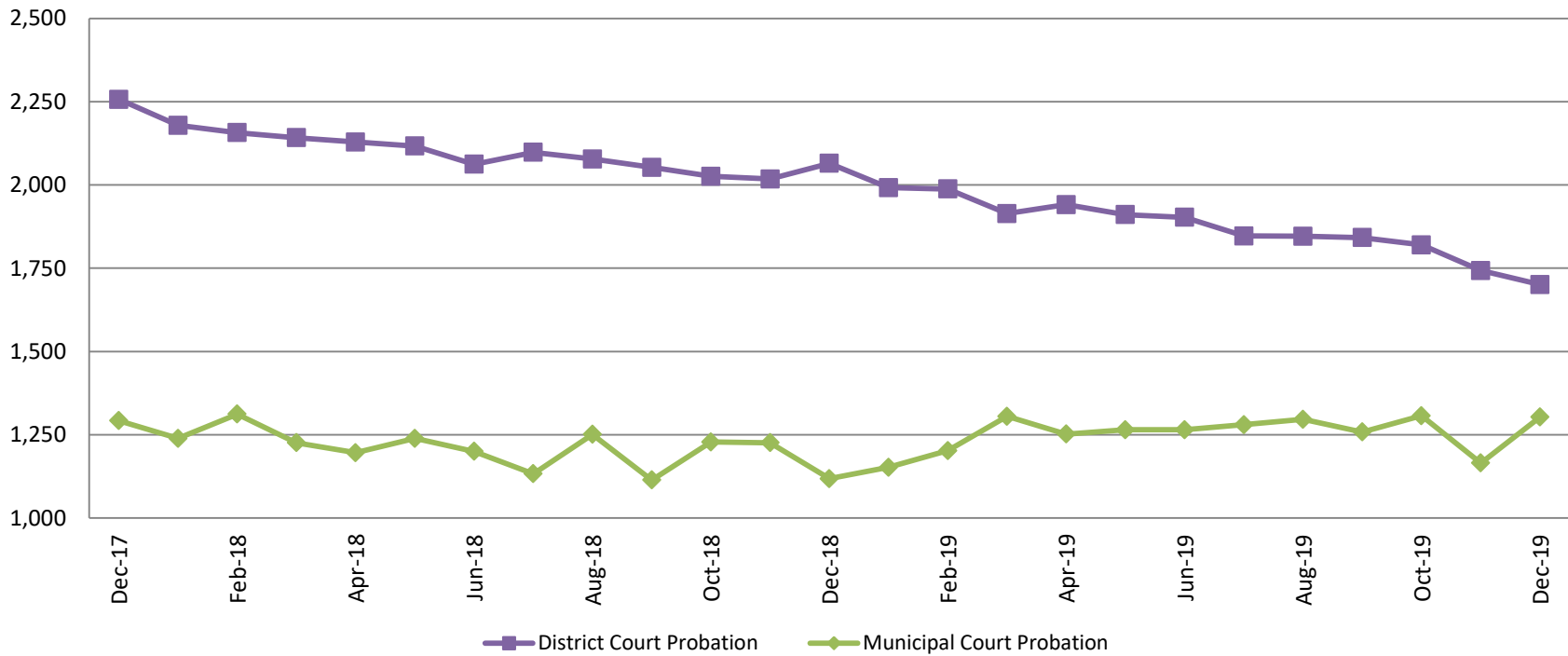


Drug Court - Sedgwick County ADP: December 2017 - present



December	2017	2018	2019
Sedg. Co. ADP	88	90	90
YTD Avg.	96	85	97

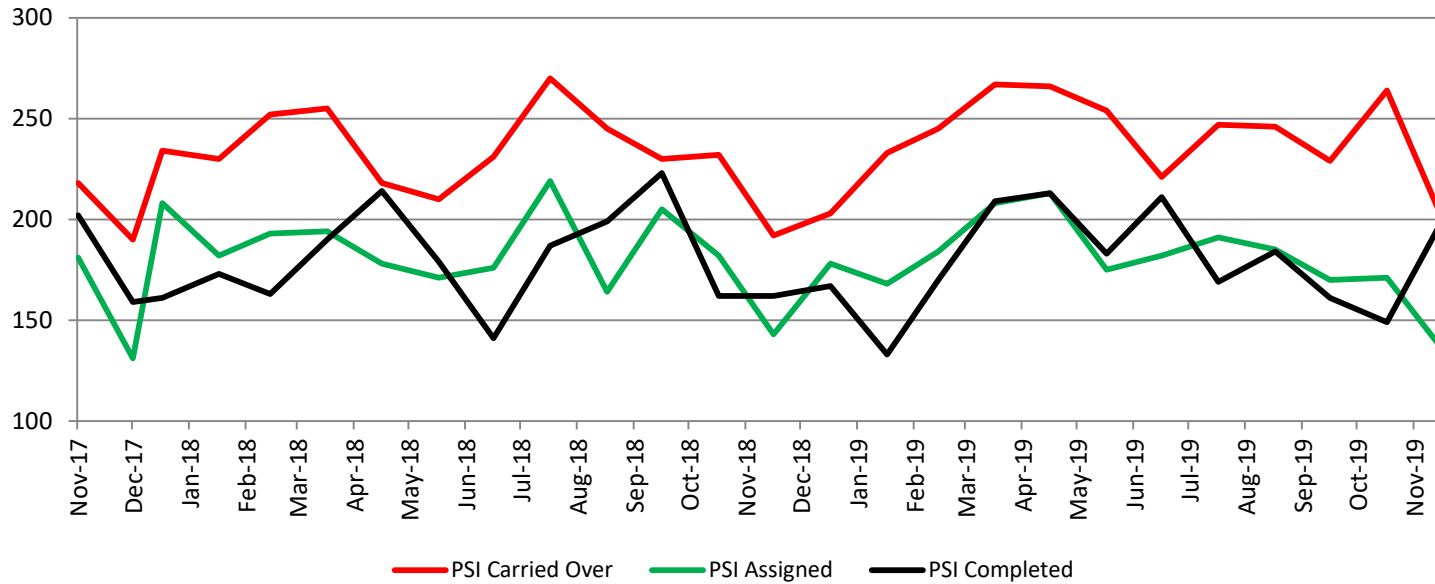
Probation - Active Caseloads December 2017 - present



December	2017	2018	2019	2017 YTD Avg.	2018 YTD Avg.	2019 YTD Avg.
Dist. Court Probation	2,257	2,065	1,701	2,253	2,094	1,701
Muni. Court Probation	1,292	1,118	1,303	1,298	1,207	1,254



District Court Probation: Pre-Sentence Investigation December 2017 - present

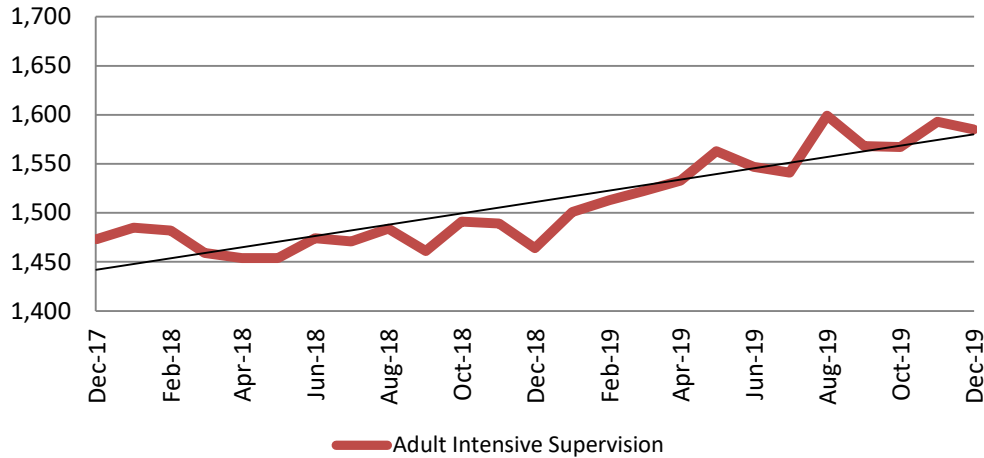


December	2017	2018	2019
Carried Over	190	192	201
Assigned	131	143	136
Completed	159	162	199



Community Corrections

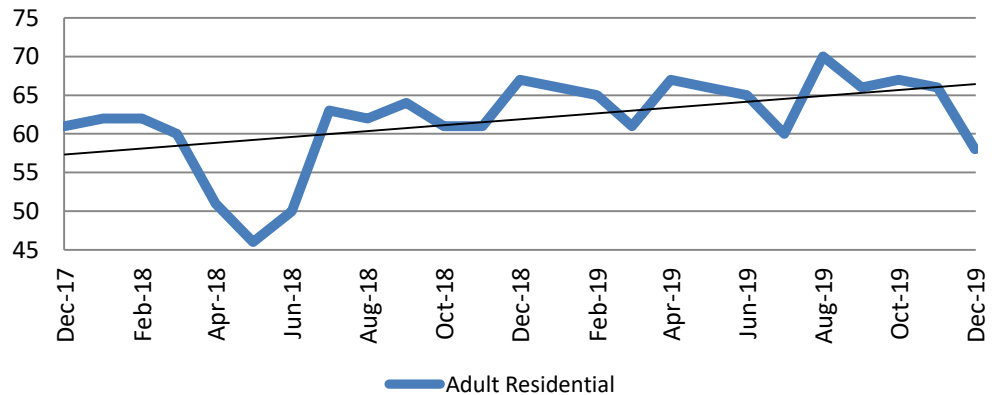
**Adult Intensive Supervision Probation (AISP):
ADP December 2017- present**



Year	December	December YTD Avg.
2017	1,473	1,526
2018	1,464	1,472
2019	1,585	1,553

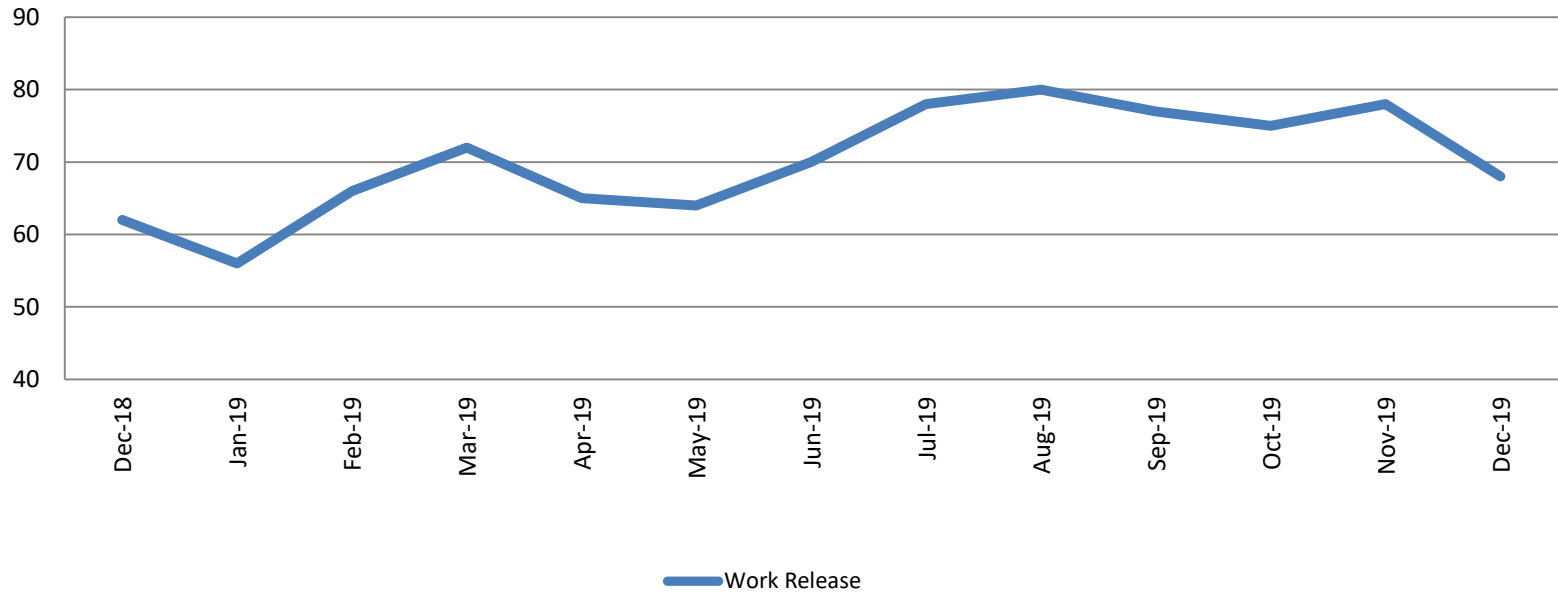
**Adult Residential: ADP
December 2017 - present**

Year	December	December YTD Avg.
2017	58	65
2018	67	59
2019	61	59



Community Corrections

Work Release: ADP December 2018 - present

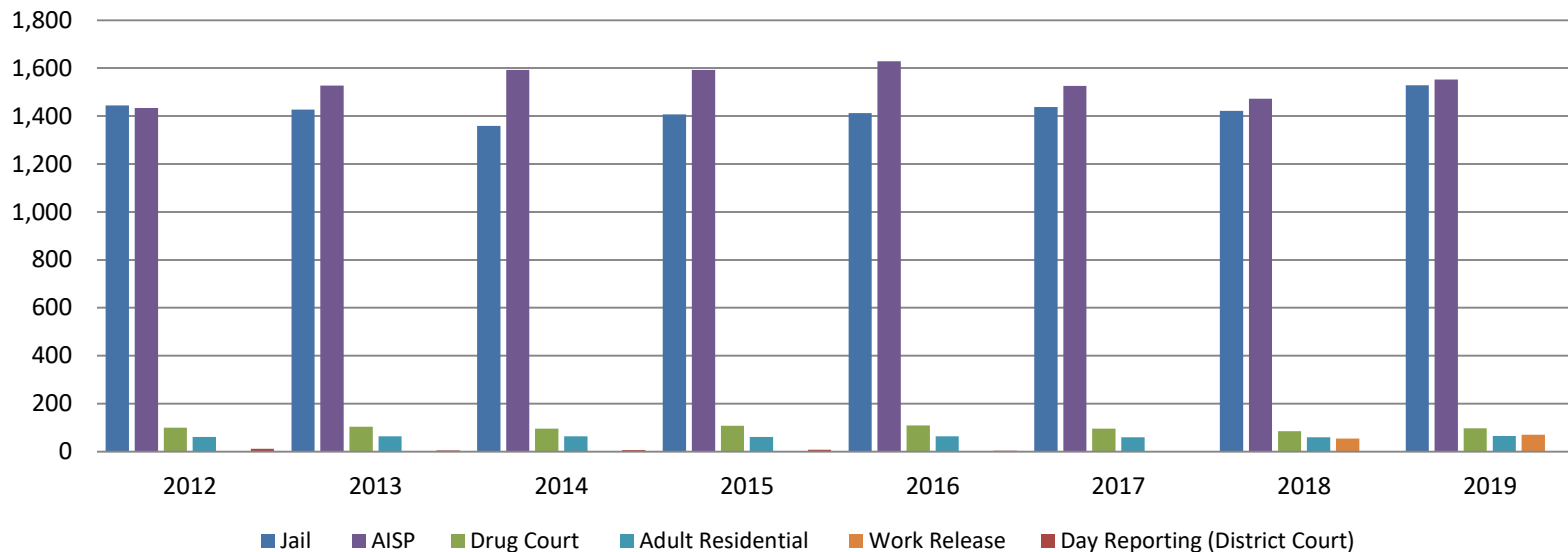


Month Year	Total	YTD Avg.
December 2018	62	55
December 2019	68	71



Correlation: Total & Sedgwick County Programs (Adult)

Total Annual ADP 2012-Present

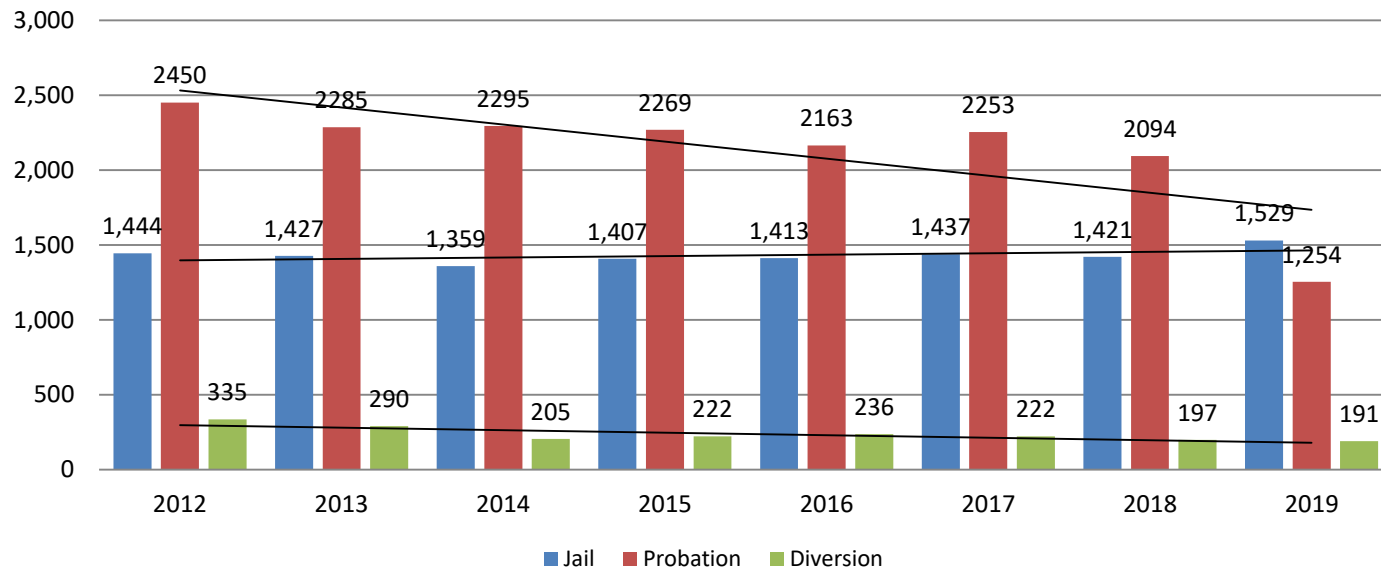


	2017	2018	2019
Jail	1,437	1,421	1,529
AISP	1,526	1,472	1,553
Drug Court	96	85	97
Adult Residential	59	59	65
Work Release	0	55	71
Day Reporting (DC)	0	0	0



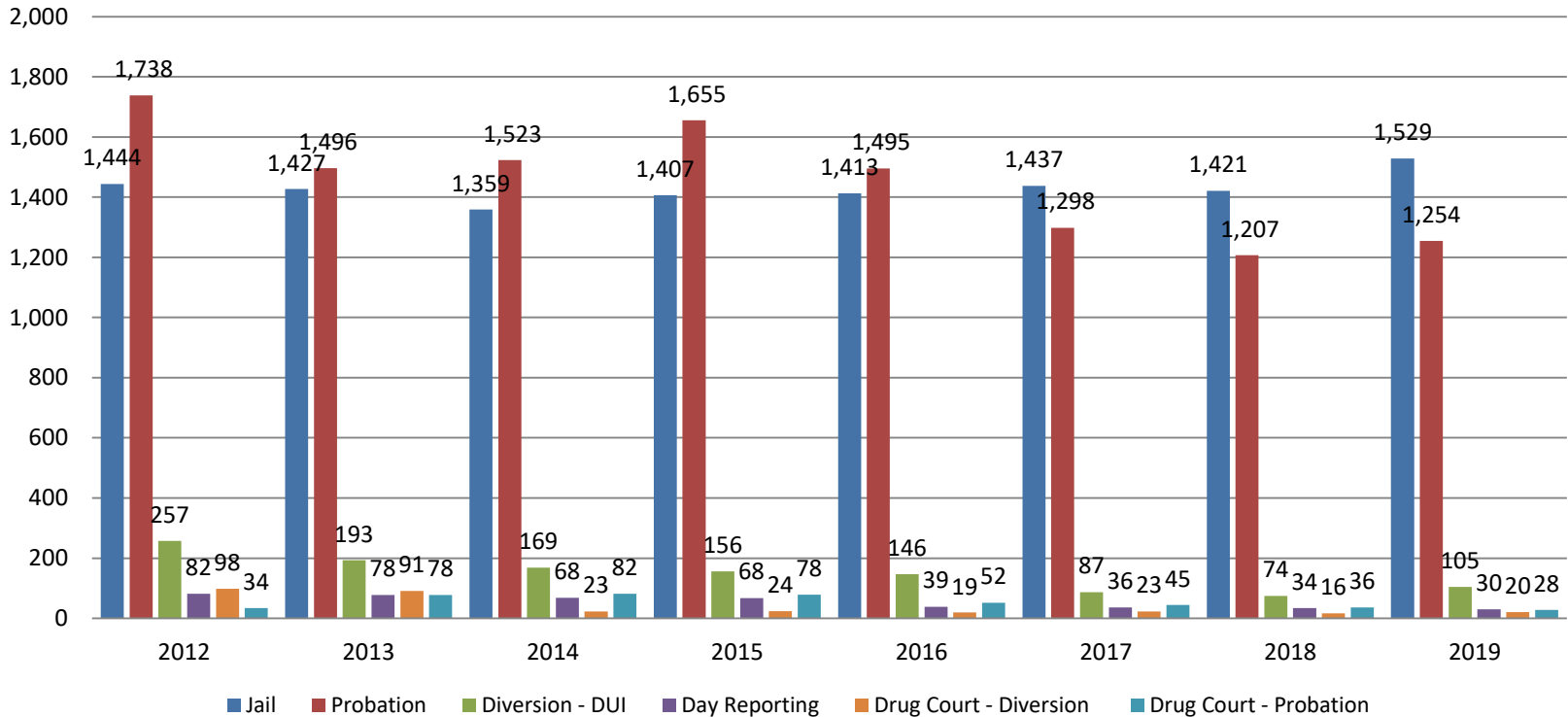
Correlation: Total & District Court Programs

Total Annual ADP: 2012 - Present



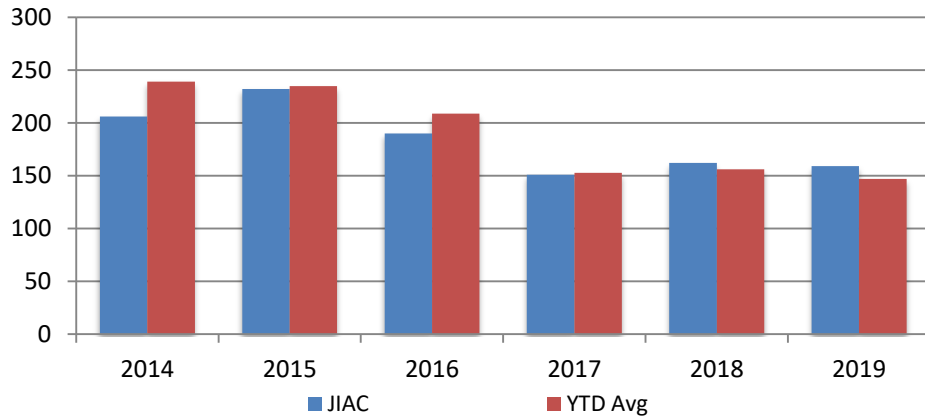
Correlation: Total & City of Wichita / Municipal Court Programs

Total Annual ADP: 2012 - present



Juvenile

**Jiac Intakes
December 2014 - present**

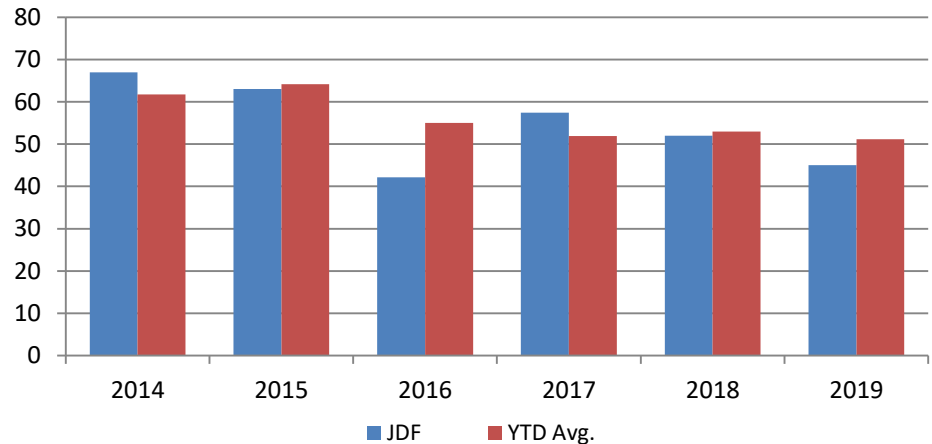


Year	December	December YTD Avg.
2014	206	239
2015	232	235
2016	190	209
2017	151	153
2018	162	156
2019	159	147

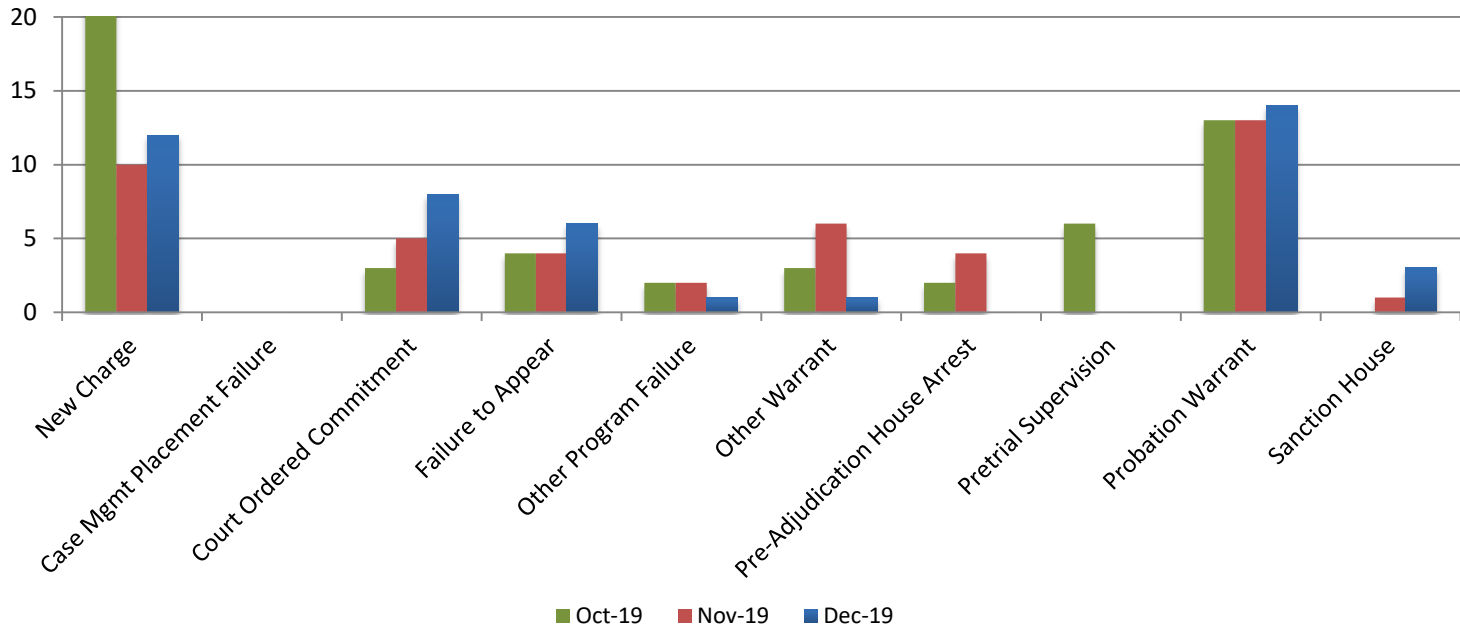
Year December December YTD Avg.

2014	67	62
2015	63	64
2016	42	55
2017	57	52
2018	52	53
2019	45	51

**JDF ADP
December 2014 - present**



Reason for JDF Admits



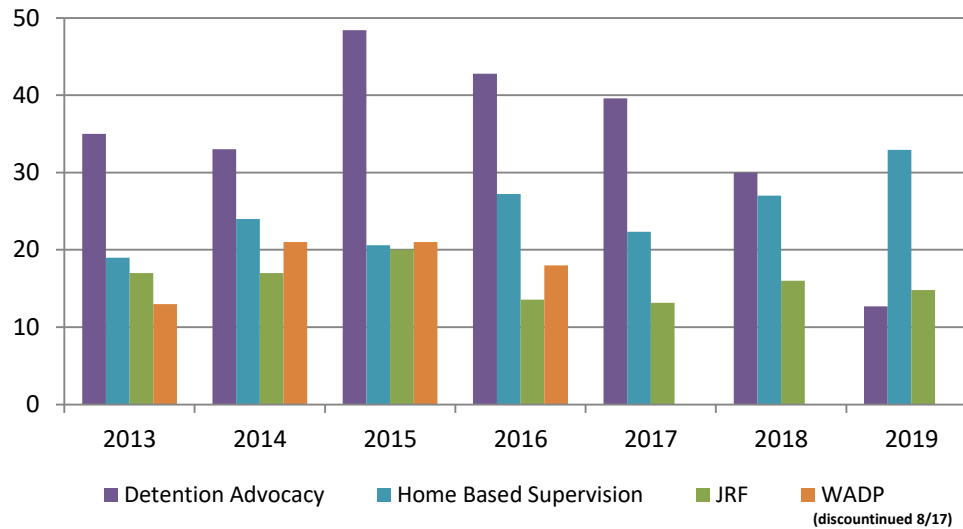
Reason for JDF Admits

Reason	December 2018	December 2019
New Charges	8	12
Case Management Placement Failures	0	0
Court Ordered Commitment	11	8
Failure to Appear	3	6
Other Program Failure	3	1
Other Warrant	3	1
Pre-Adjudication House Arrest	8	0
Pretrial Supervision	0	0
Probation Warrant	6	14
Sanction House	1	3



Juvenile Detention Alternatives

ADP: December 2013- Present



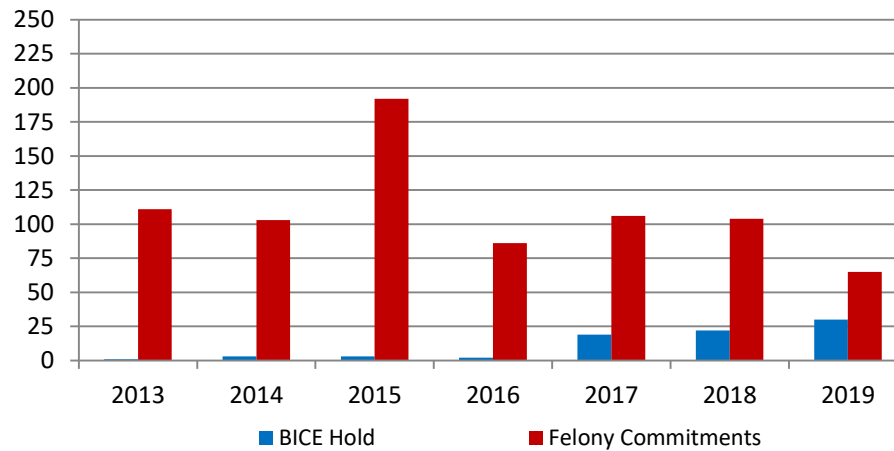
Juvenile Detention Services

December ADP	2016	2017	2018	2019
Juvenile Detention Facility	42	57	52	45
Juvenile Residential Facility	14	13	16	15
Home Based Supervision	27	22	27	33
Detention Advocacy Case Management Services	43	40	30	13
Weekend Alternative Detention Program (total)	18	0	0	N/A

December YTD AVERAGE	2016	2017	2018	2019
Juvenile Detention Facility	55	52	53	51
Juvenile Residential Facility	16	15	14	14
Home Based Supervision	27	21	25	28
Detention Advocacy Case Management Services	36	38	32	19
Weekend Alternative Detention Program	15	9	0	N/A

Monthly Jail Snapshot: December 31, 2019

Snapshots December 2013 - Present

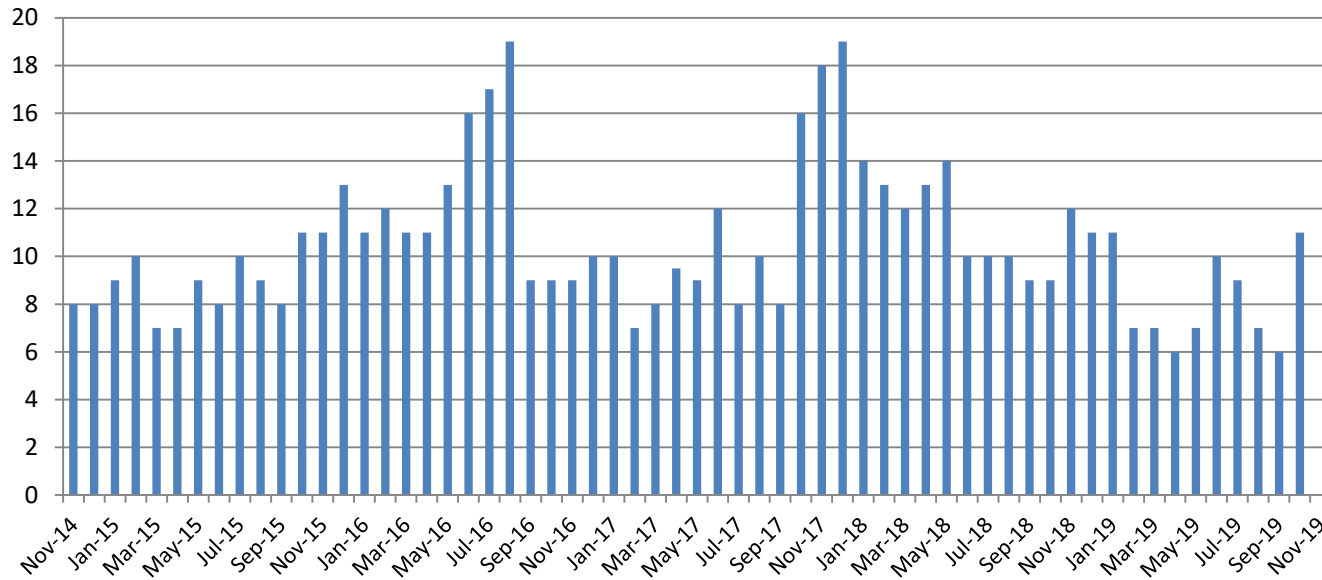


BICE Hold	2013	2014	2015	2016	2017	2018	2019
December	1	3	3	2	19	22	30

Felony Commitments	2013	2014	2015	2016	2017	2018	2019
December	111	103	192	86	106	104	65



Journal Entry Completion (Average Days) November 2014-Present



November	2014	2015	2016	2017	2018	2019
Avg. Days	8	11	9	18	12	ND
YTD Avg.	7	9	12	11	11.45	ND

