

# Criminal Justice Coordinating Council

## Population Report & Program Trends

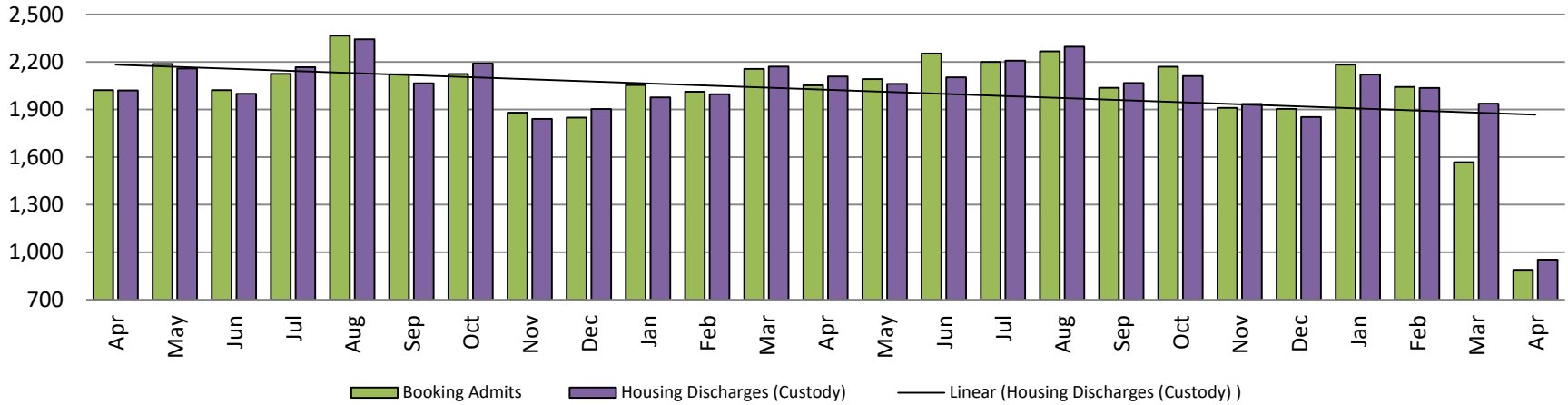
May 2020



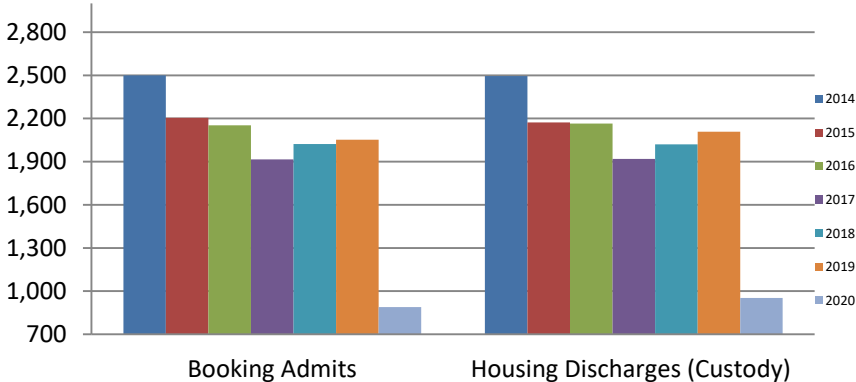
*Sedgwick County...*  
*working for you*

# Detention Facility

## Booking Admits & Housing Discharges from Custody April 2018 - present



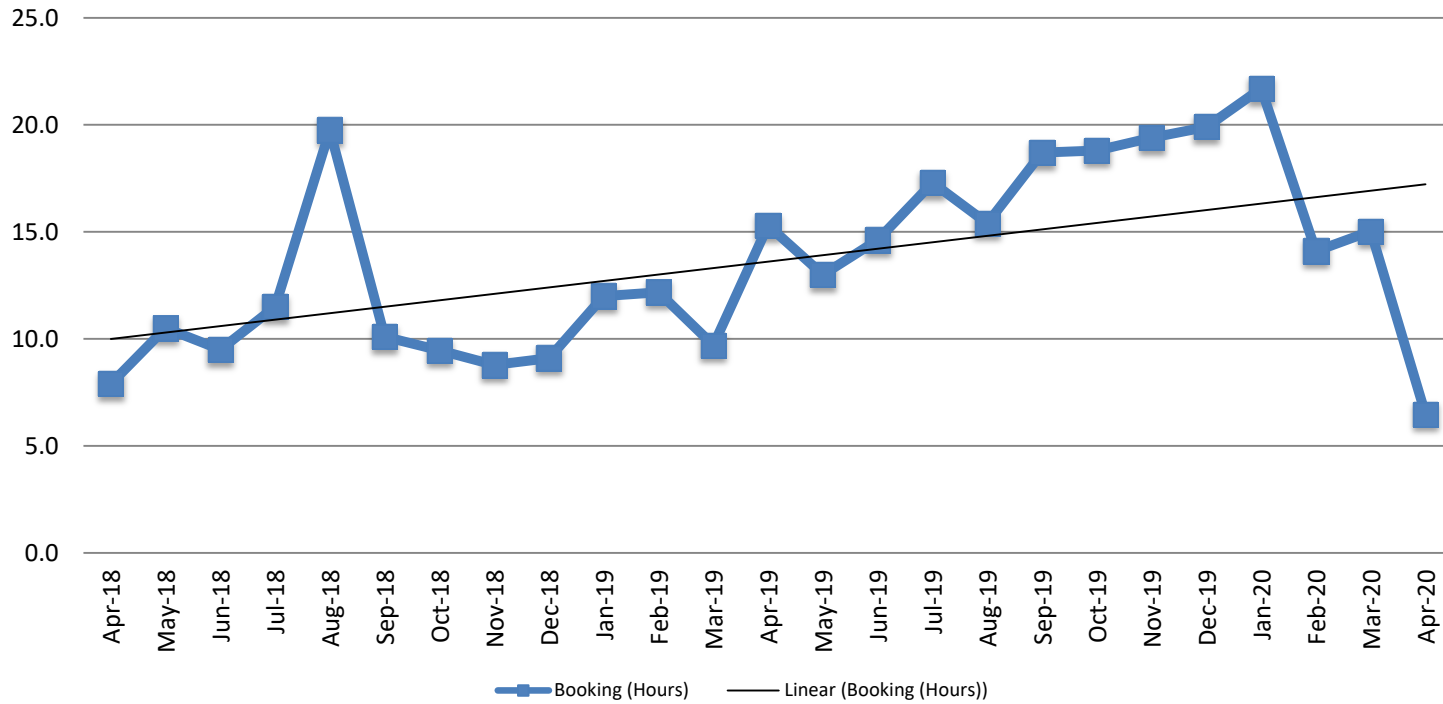
## Bookings Year over Year: Month of April



Bookings April	Housing Discharges April
2018: 2,022	2018: 2,020
2019: 2,052	2019: 2,108
2020: 889	2020: 953

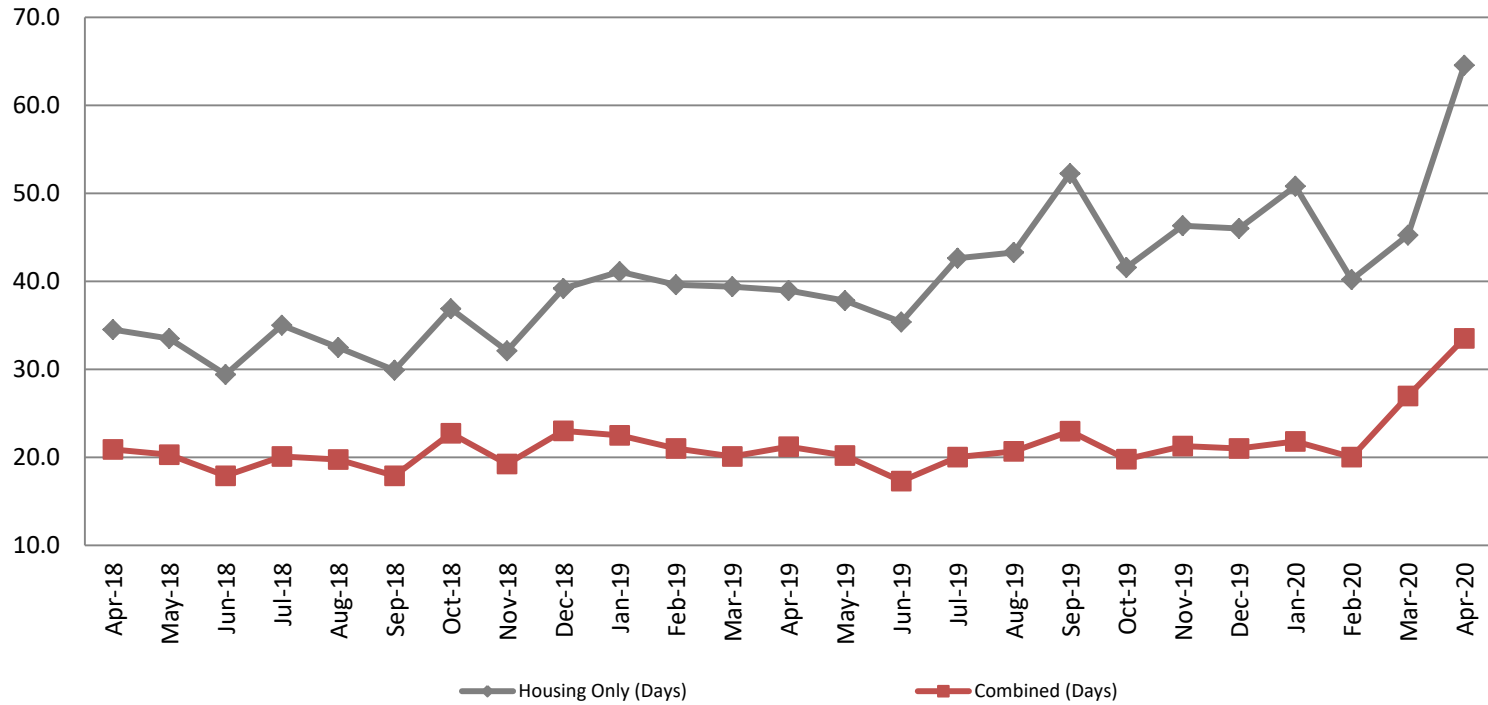


## Average Length of Stay: Booking (Hours) April 2018 - present



April	April YTD Average
2018: 7.9	2018: 8.8
2019: 15.3	2019: 12.3
2020: 6.5	2020: 14.3

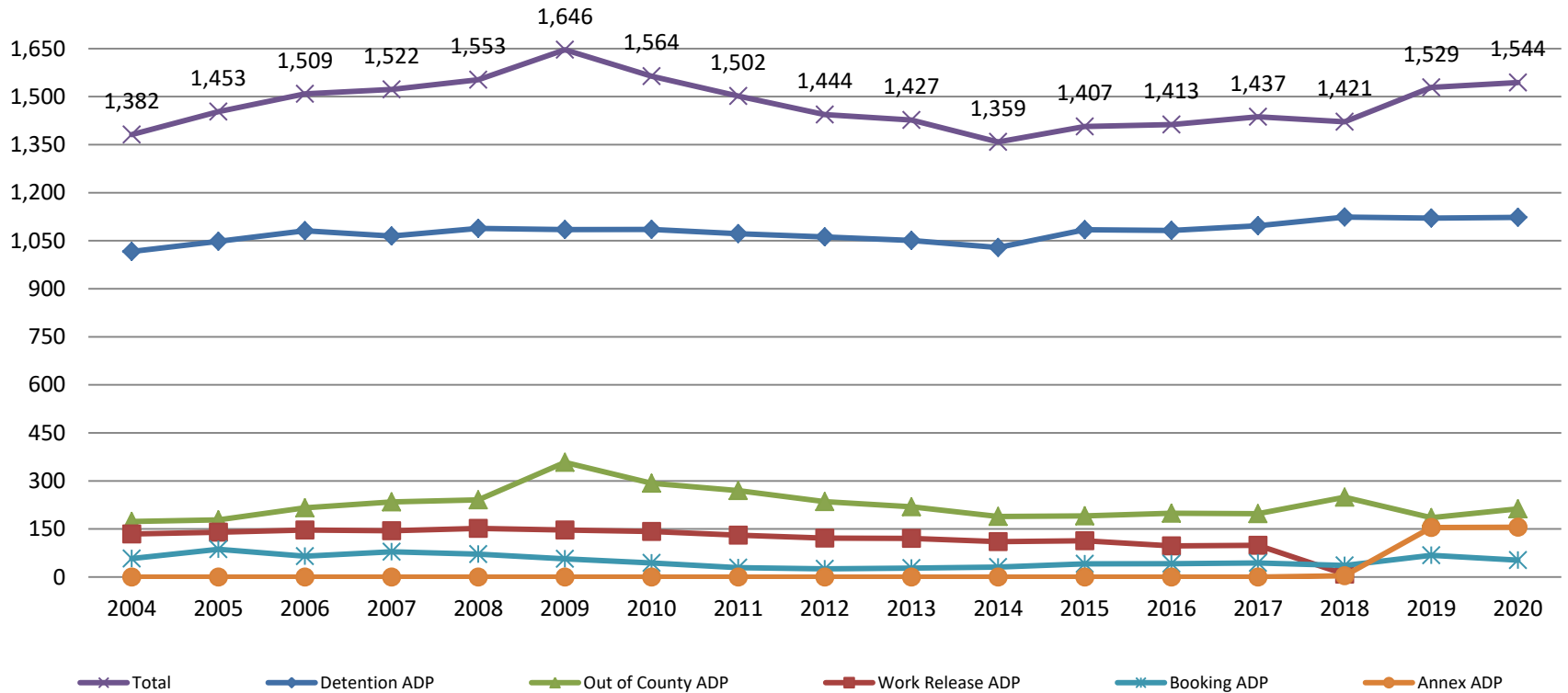
## Average Length of Stay: Housing & Combined (Days) April 2018 - present



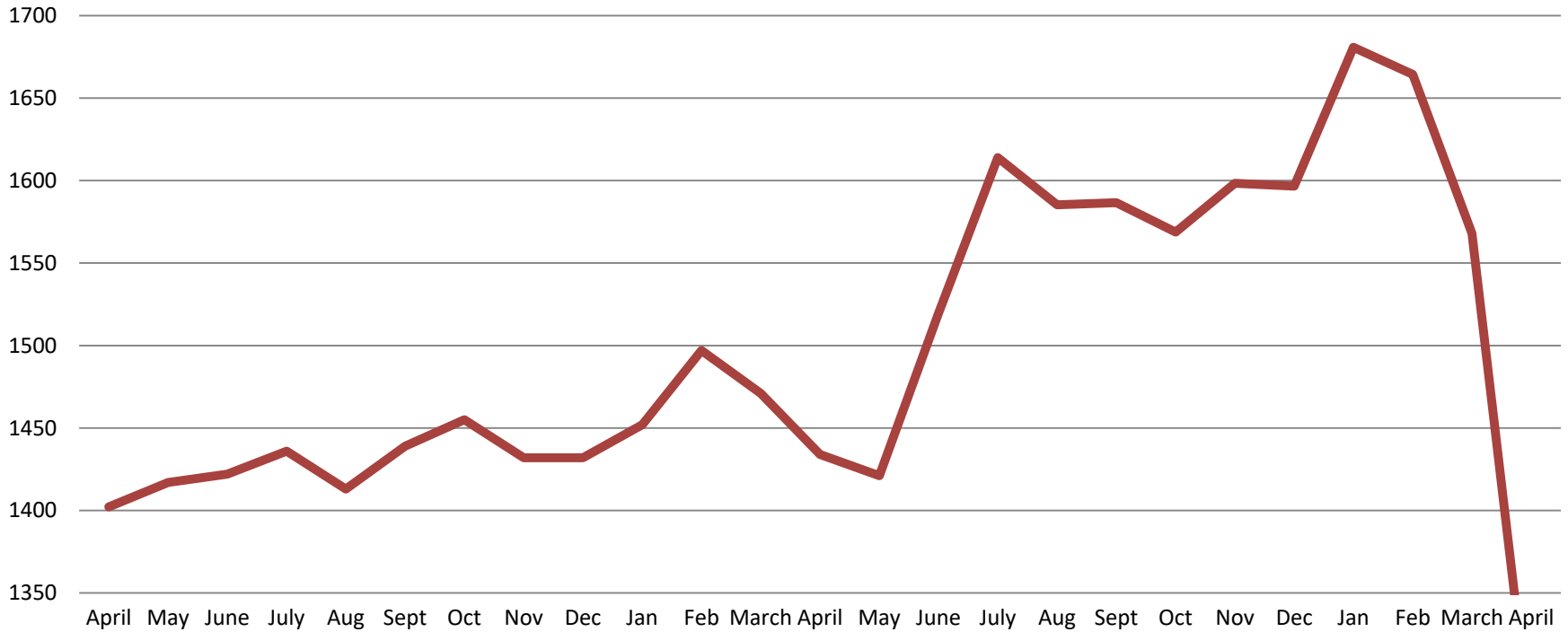
Month Year	Housing Only	Housing YTD AVG	Combined Days	Combined YTD AVG
April 2018	34.5	37.0	20.9	22.6
April 2019	39.0	39.8	21.2	21.2
April 2020	64.6	50.2	33.5	25.6

# Jail: Annual Average Daily Population (ADP)

**TRENDS: Booking, Detention, Work Release, & Out of County Annual ADP:  
2004 - present**

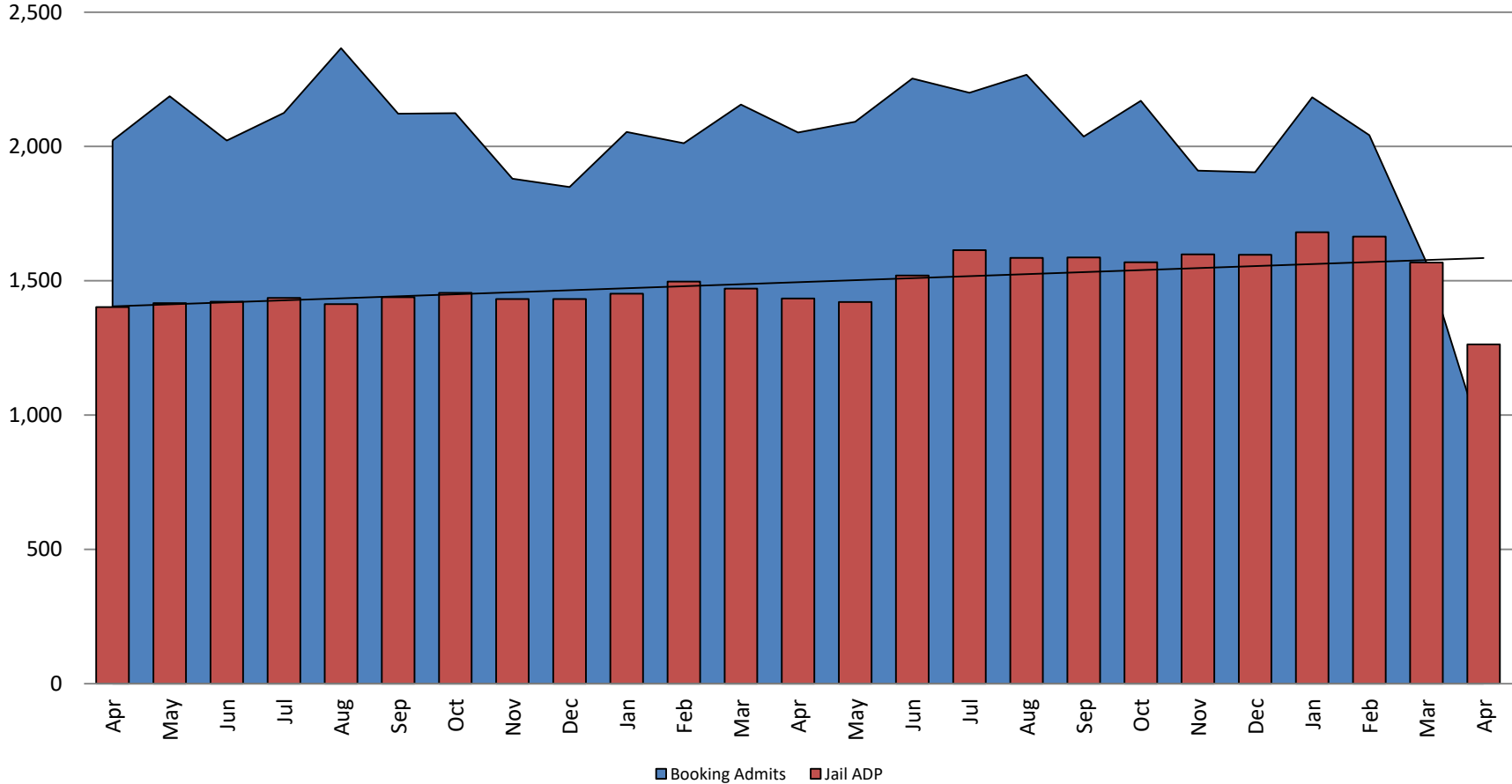


## TOTAL MONTHLY ADP: JAIL (Booking, Detention Facility, Annex, & Out of County) April 2018 - present

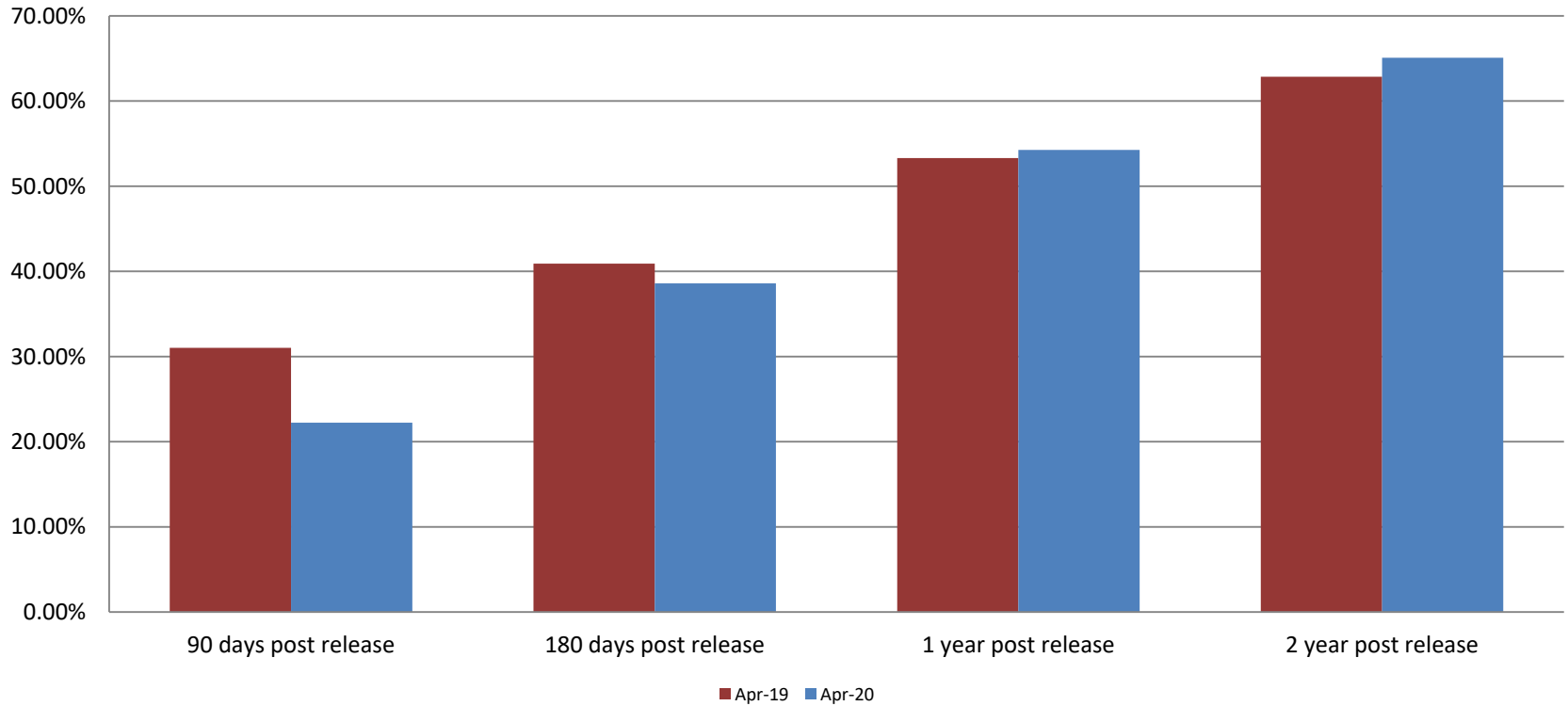


April 2018	April 2019	April 2020
1,402	1,434	1,263

## Booking Admits & Total Monthly ADP (Jail): April 2018 - present



## Percent of released inmates rearrested April

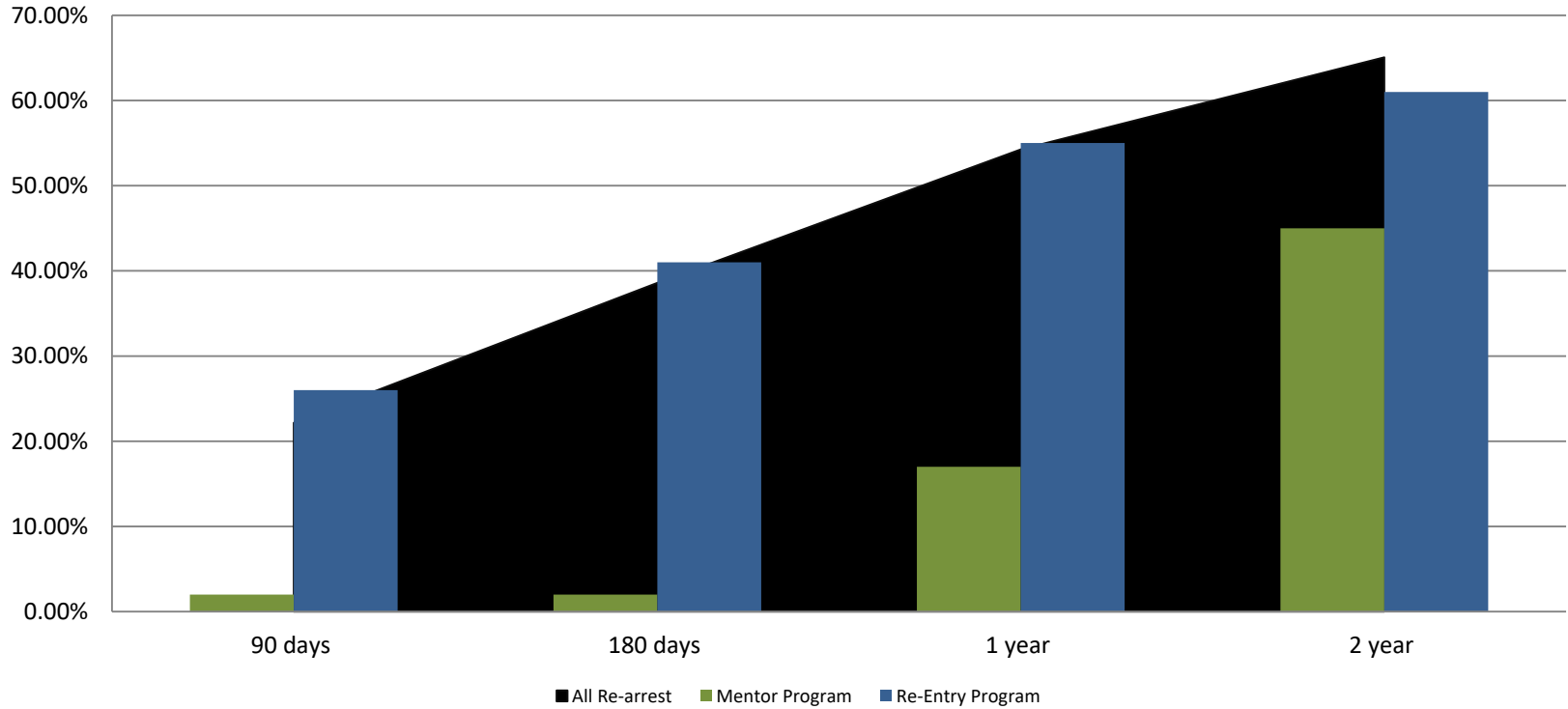


Month Year	90 Days	180 Days	1 Year	2 Years
April 2019	31.02%	40.90%	53.30%	62.85%
April 2020	22.24%	38.59%	54.26%	65.07%





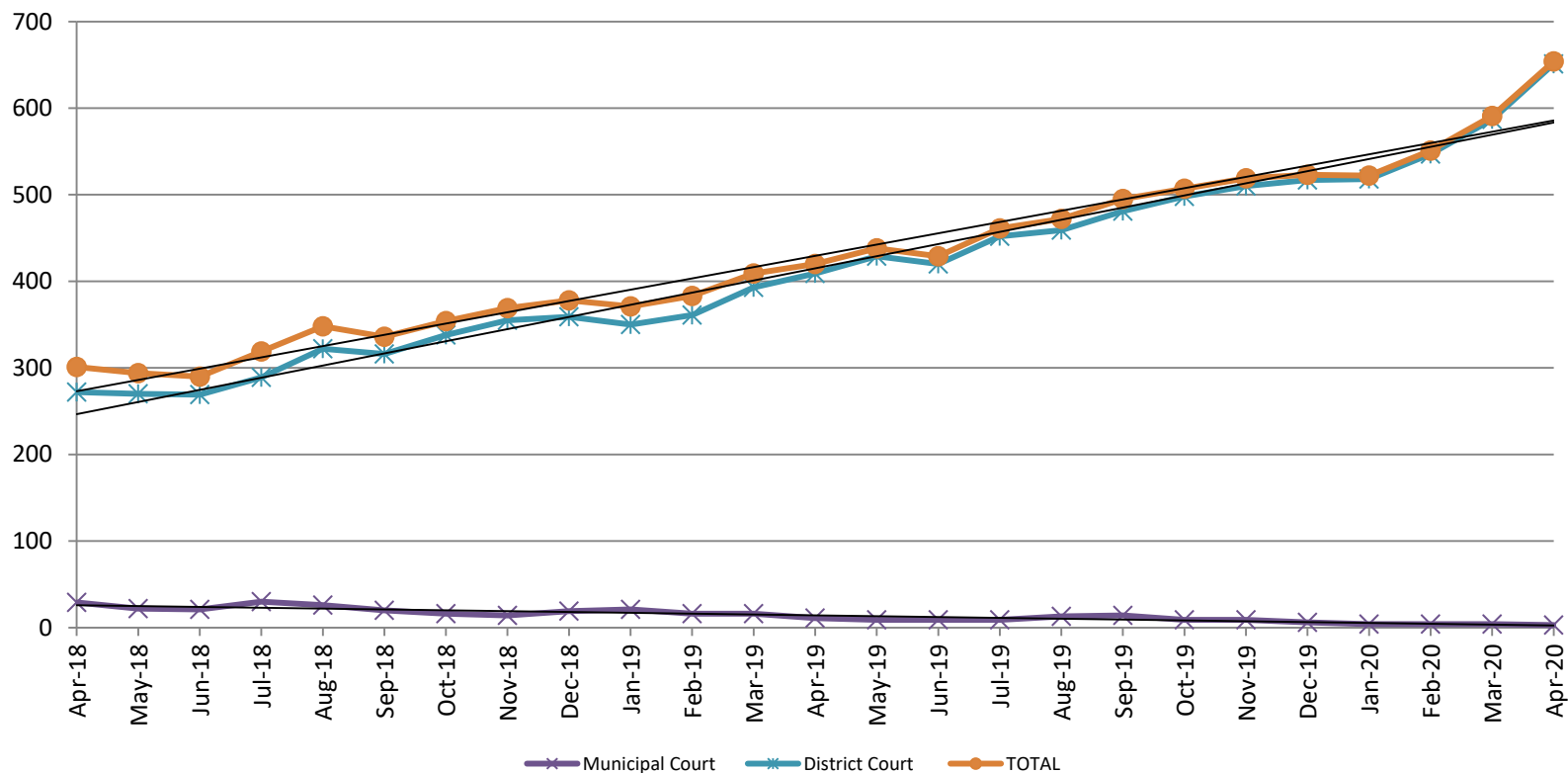
## Recidivism by Programs April 2020



April 2020	90 Days	180 Days	1 year	2 years
All Re-arrests	22.24%	38.59%	54.26%	65.07%
Mentor Program	2%	2%	17%	45%
Re-Entry Program	26%	42%	56%	61%



# Pretrial Services Program (PSP) Monthly ADP: April 2018 - present

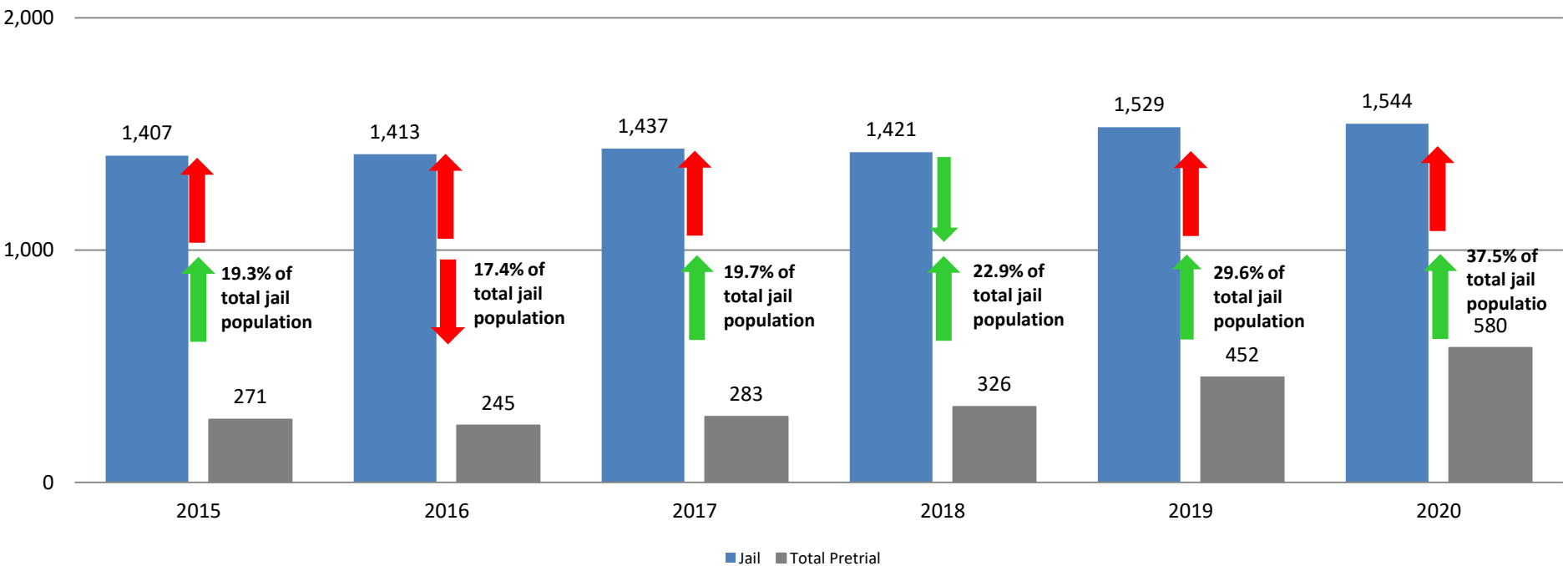


April	2018 ADP	2019 ADP	2020 ADP	2018 YTD Avg.	2019 YTD Avg.	2020 YTD Avg.
Muni. Court	29	11	3	30	16	4
Dist. Court	272	409	651	274	378	576
Total	301	420	654	305	396	580



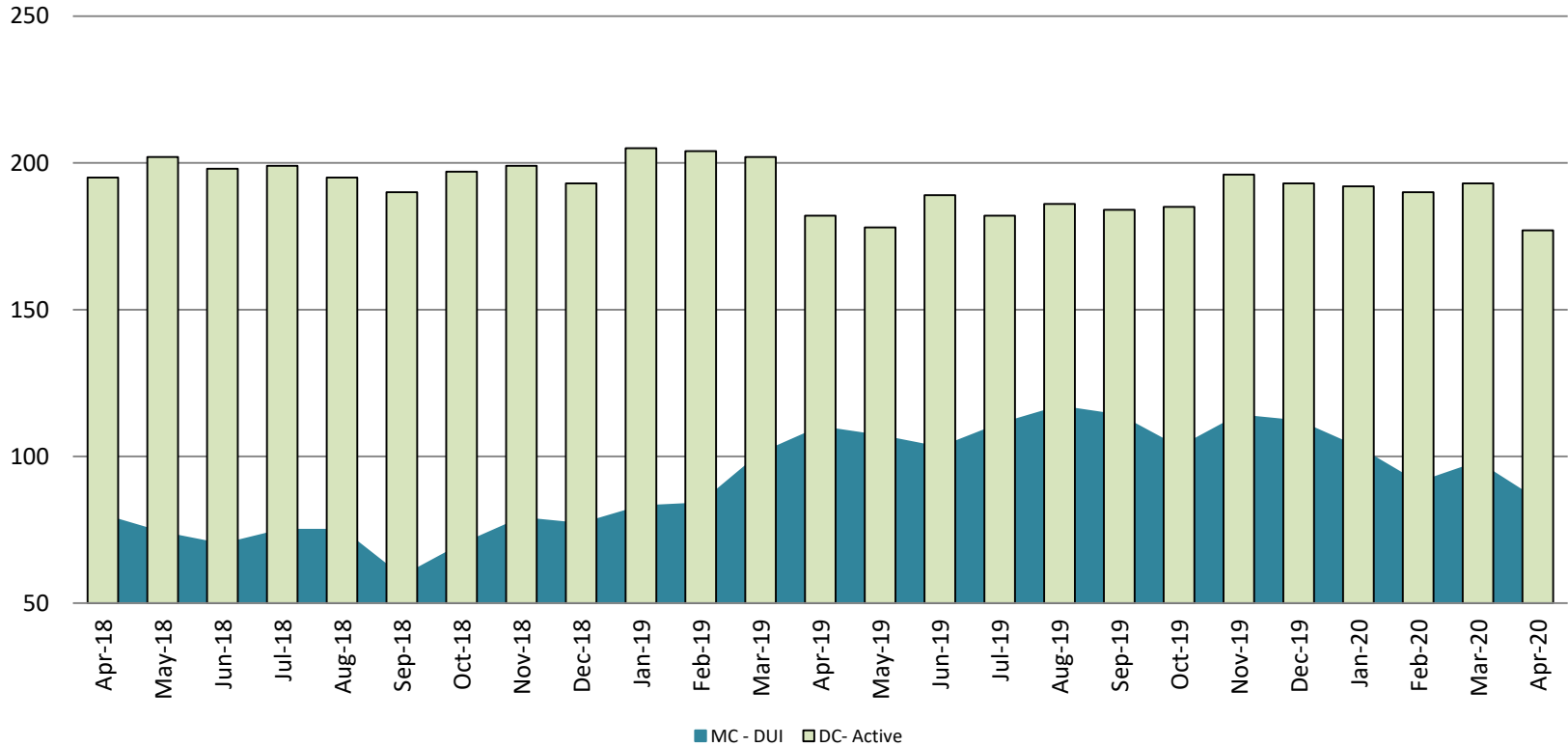
# Correlation: Total & PSP

## Total Annual ADP: 2015 - present



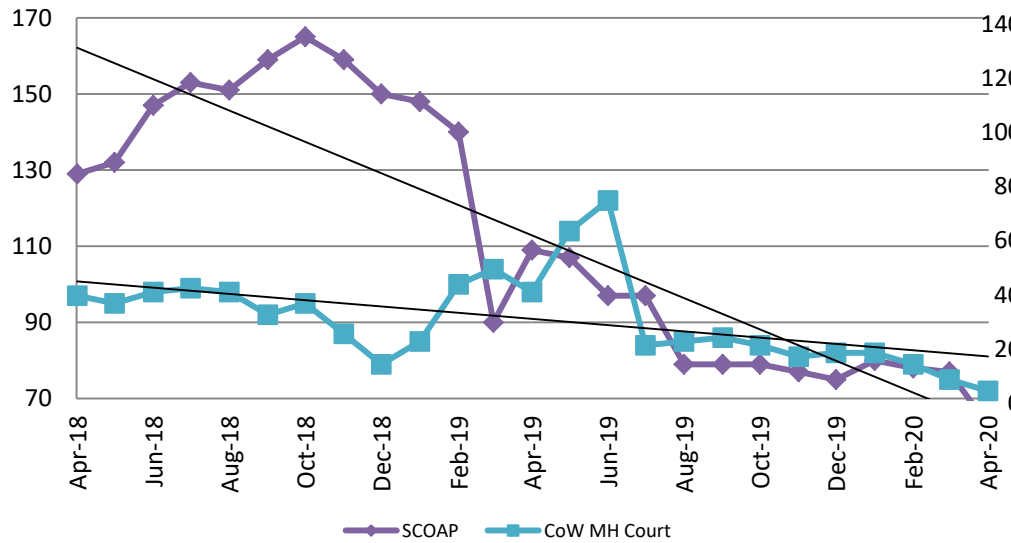
# Diversion - Active Caseload

April 2018 - present

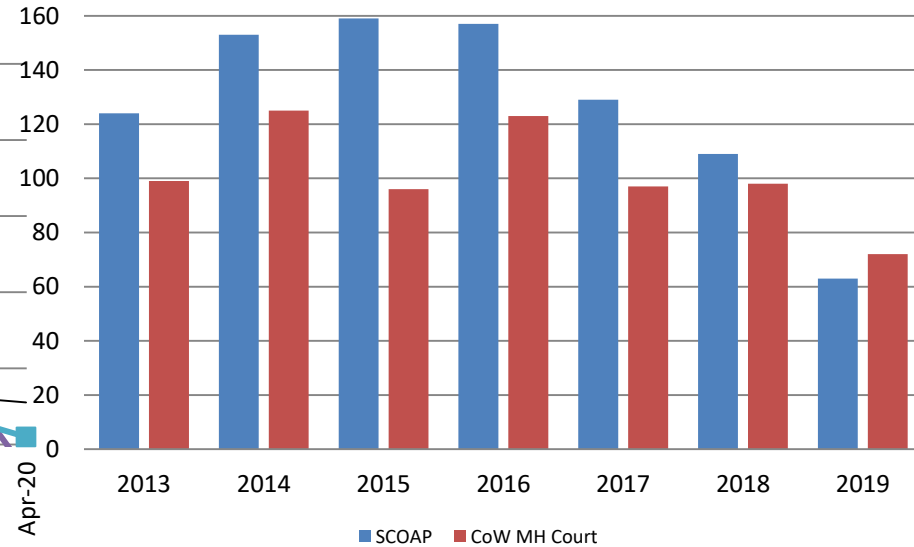


April	2018	2019	2020	2018 YTD Avg.	2019 YTD Avg.	2020 YTD Avg.
Muni. Court- DUI	80	110	85	78	95	94
Dist. Court- Active	195	182	177	199	198	188

### Mental Health - ADP April 2018 - present

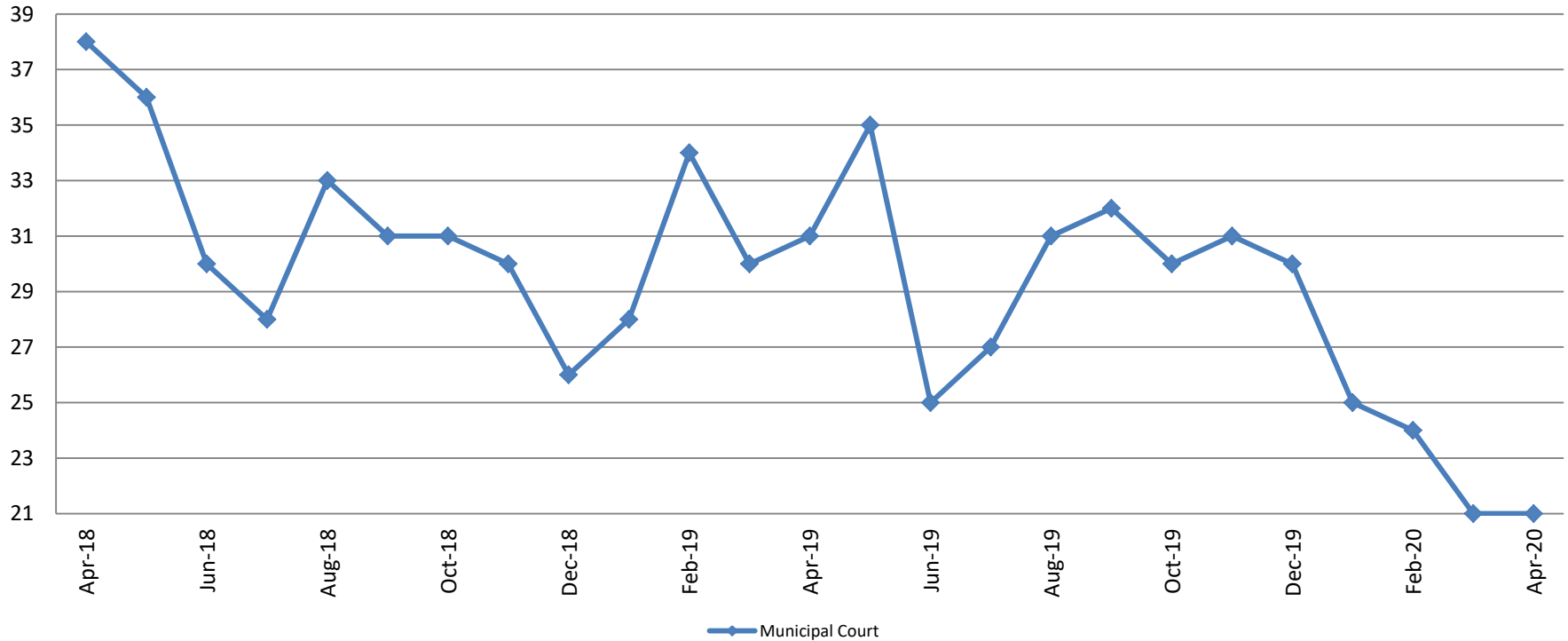


### Mental Health ADP Year over Year - April



April	2018 ADP	2019 ADP	2020 ADP	2018 YTD Avg.	2019 YTD Avg.	2020 YTD Avg.
SCOAP	129	109	63	137	122	72
MH Court	97	98	75	101	97	77

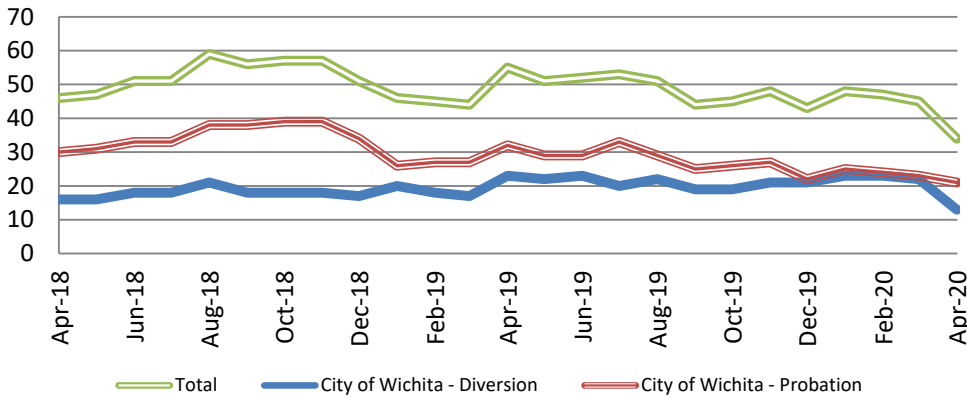
## Day Reporting - Active Caseload April 2018 - present



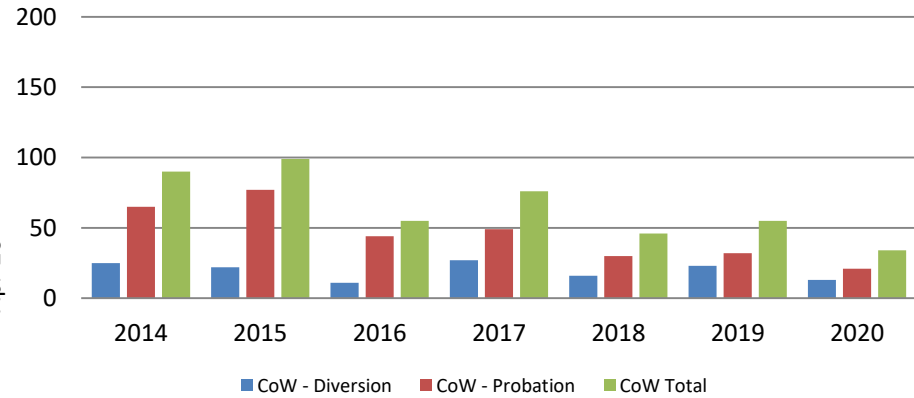
April	2015	2016	2017	2018	2019	2020
Muni. Court	71	50	31	38	31	21
Muni. Court YTD Avg.	71	48	33	39	31	23



### Drug Court - City of Wichita ADP: April 2018 - present



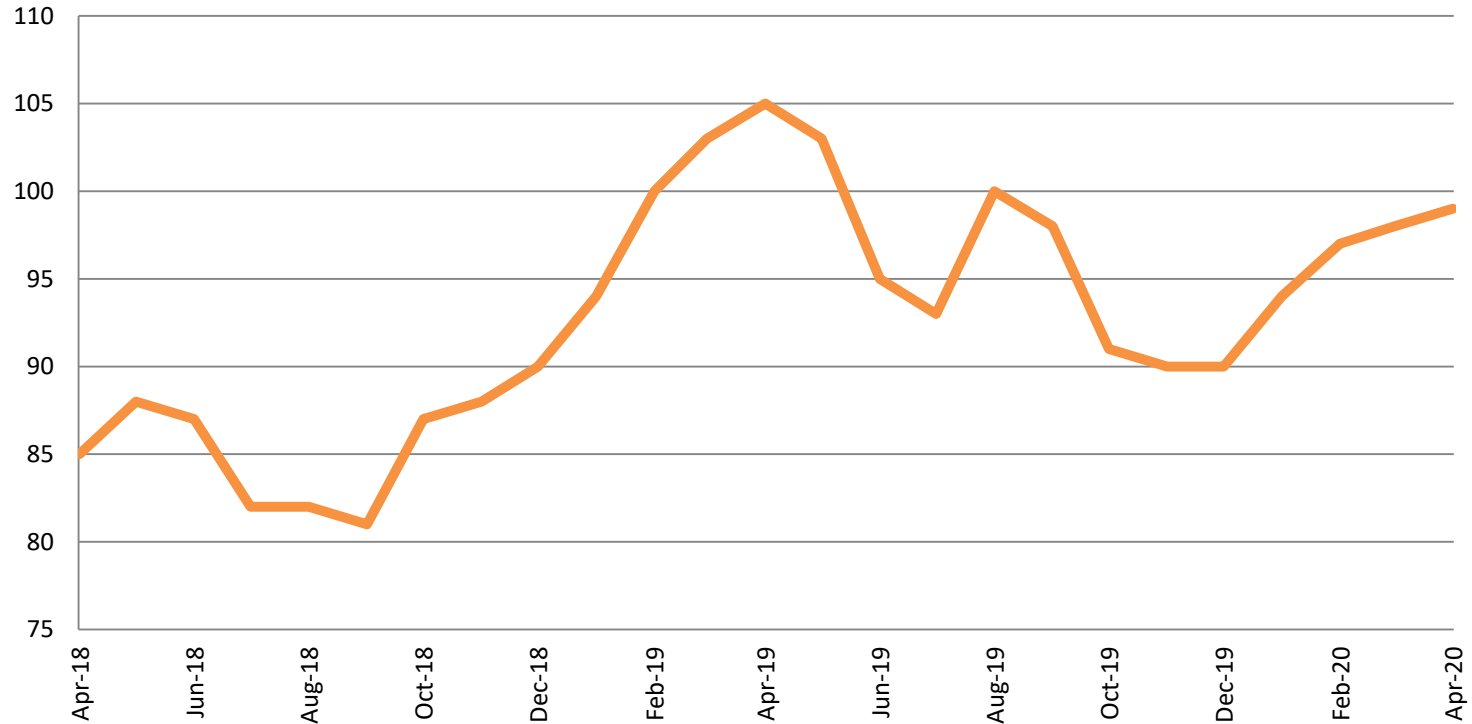
### Drug Court- City of Wichita Year over Year - April



April	2018	2019	2020
Diversion	16	23	13
Probation	30	32	21
Total	46	55	34



## Drug Court - Sedgwick County ADP: April 2018 - present

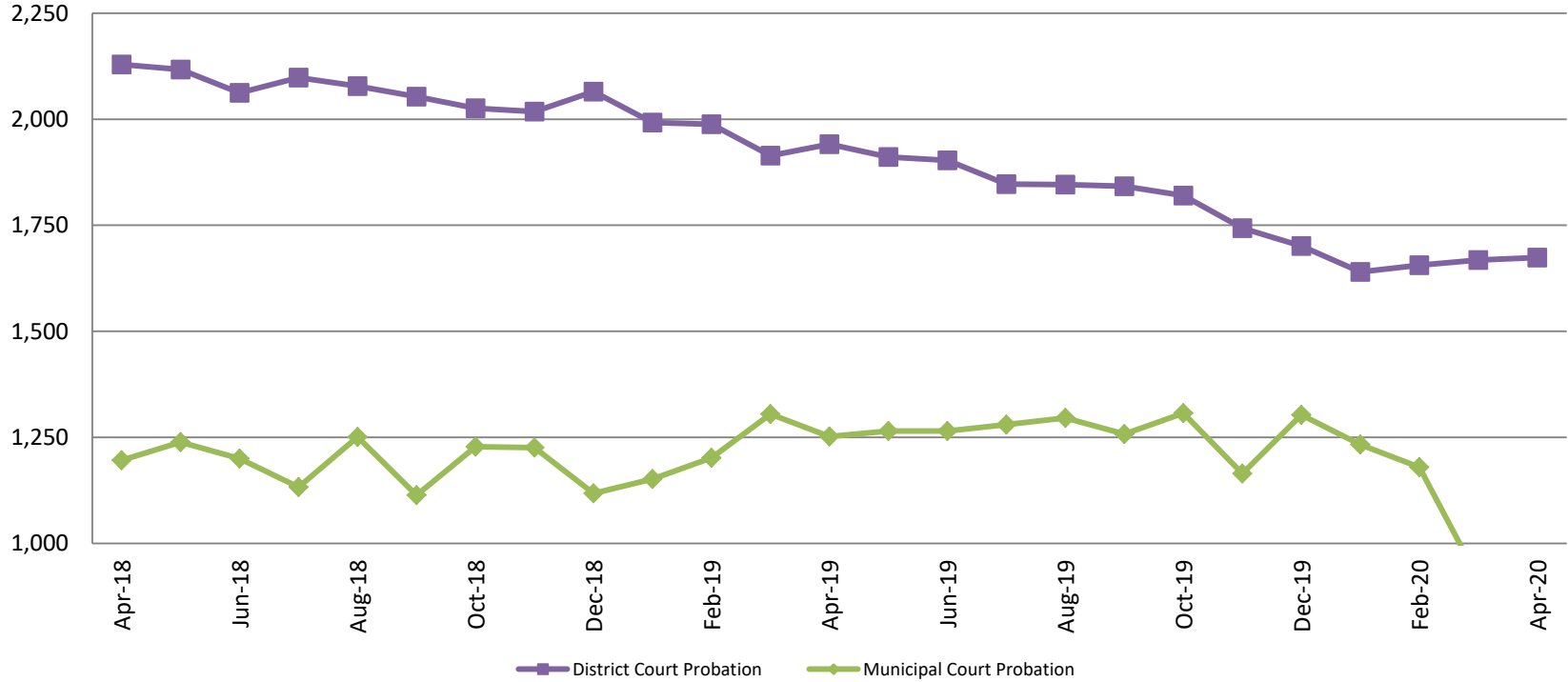


April	2018	2019	2020
Sedg. Co. ADP	85	105	99
YTD Avg.	84	101	97





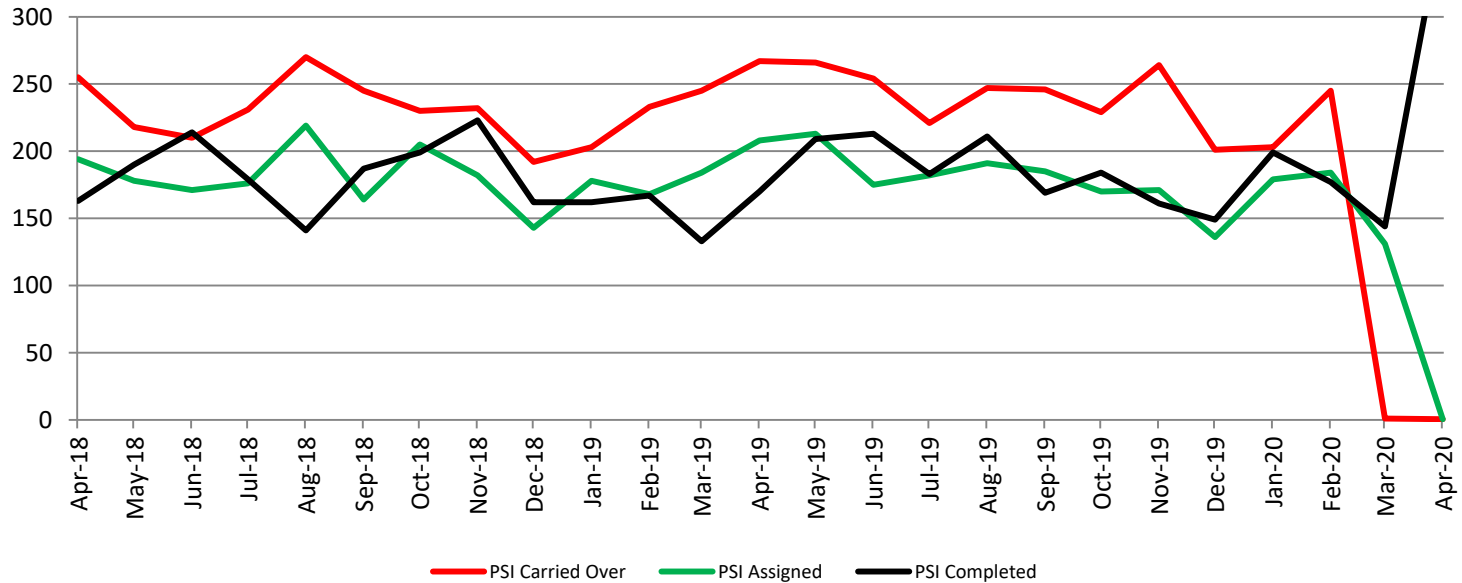
## Probation - Active Caseloads April 2018 - present



	<b>April</b>	<b>2018</b>	<b>2019</b>	<b>2020</b>	<b>2018 YTD Avg.</b>	<b>2019 YTD Avg.</b>	<b>2020 YTD Avg.</b>
<b>Dist. Court Probation</b>	2,129	1,941	1,674	1,674	2,152	1,959	1,660
<b>Muni. Court Probation</b>	1,196	1,252	819	819	1,243	1,228	1,037



## District Court Probation: Pre-Sentence Investigation April 2018 - present

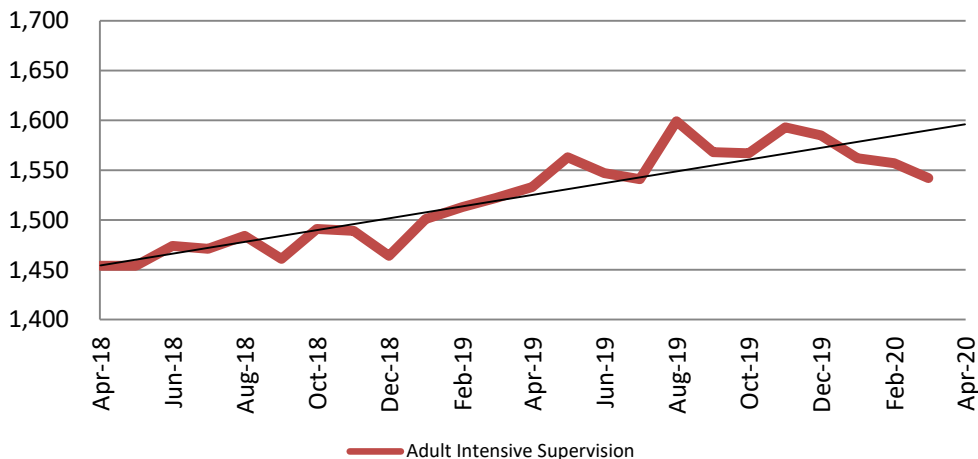


April	2018	2019	2020
Carried Over	255	267	1
Assigned	194	208	1
Completed	190	209	0



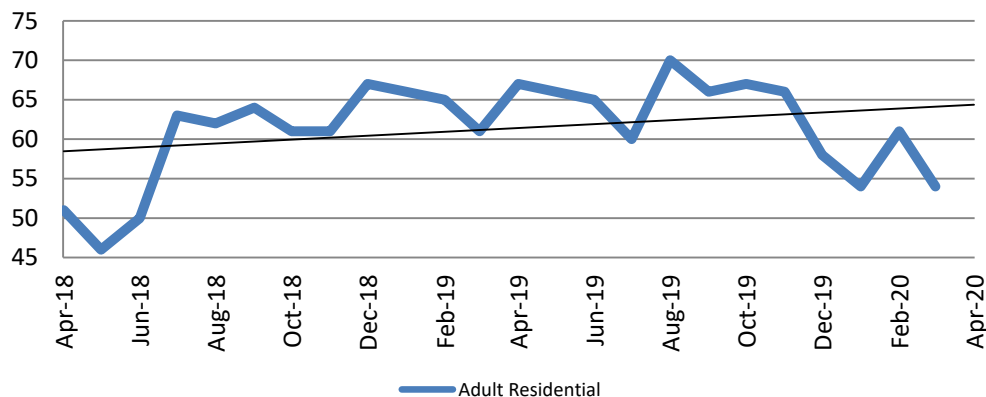
# Community Corrections

**Adult Intensive Supervision Probation (AISP):  
ADP April 2018- present**



Year	April	April YTD Avg.
2018	1,454	1,470
2019	1,533	1,517
2020	ND	ND

**Adult Residential: ADP  
April 2018 - present**

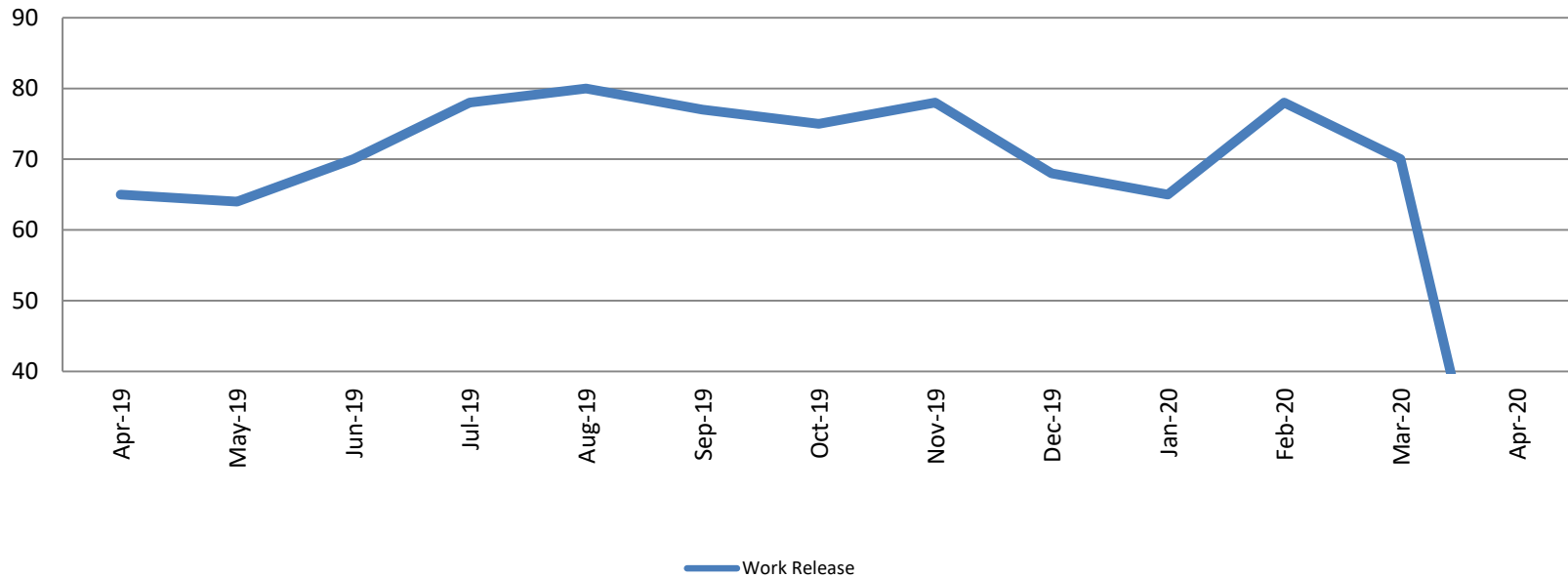


Year	April	April YTD Avg.
2018	51	59
2019	67	65
2020	ND	ND



# Community Corrections

## Work Release: ADP April 2019 - present

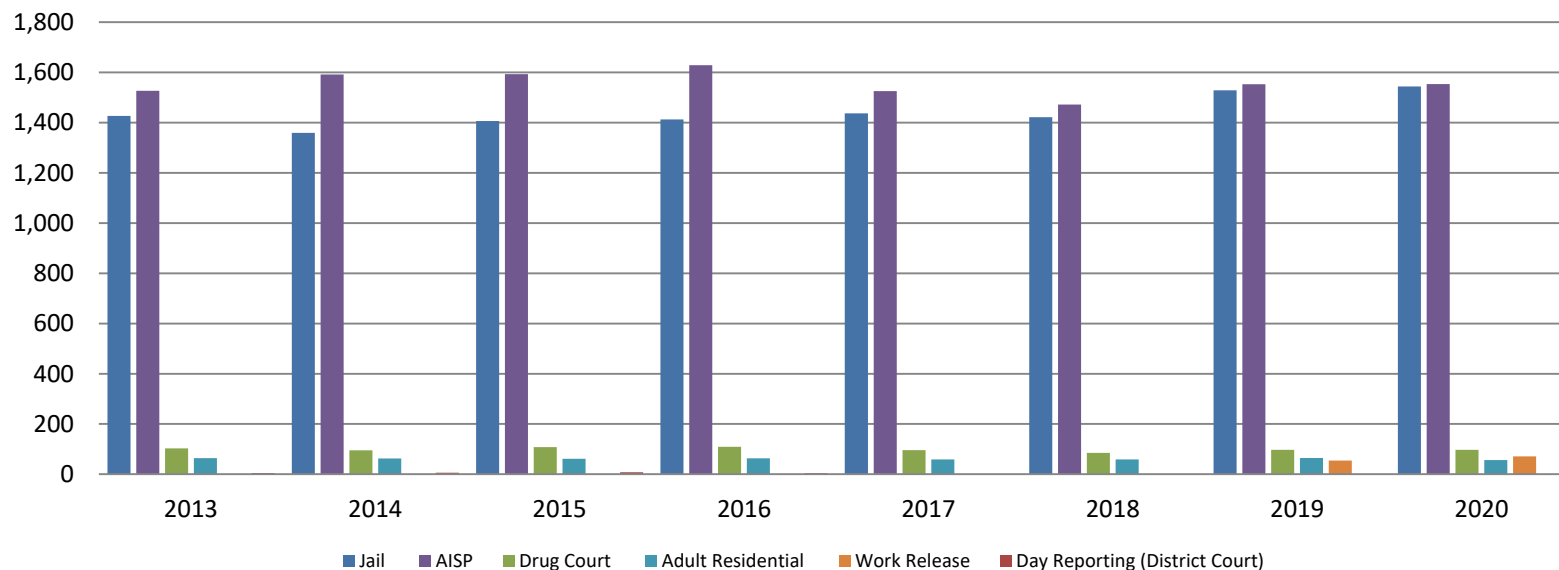


Month Year	Total	YTD Avg.
April 2019	65	65
April 2020	ND	ND



# Correlation: Total & Sedgwick County Programs (Adult)

## Total Annual ADP 2013 - present

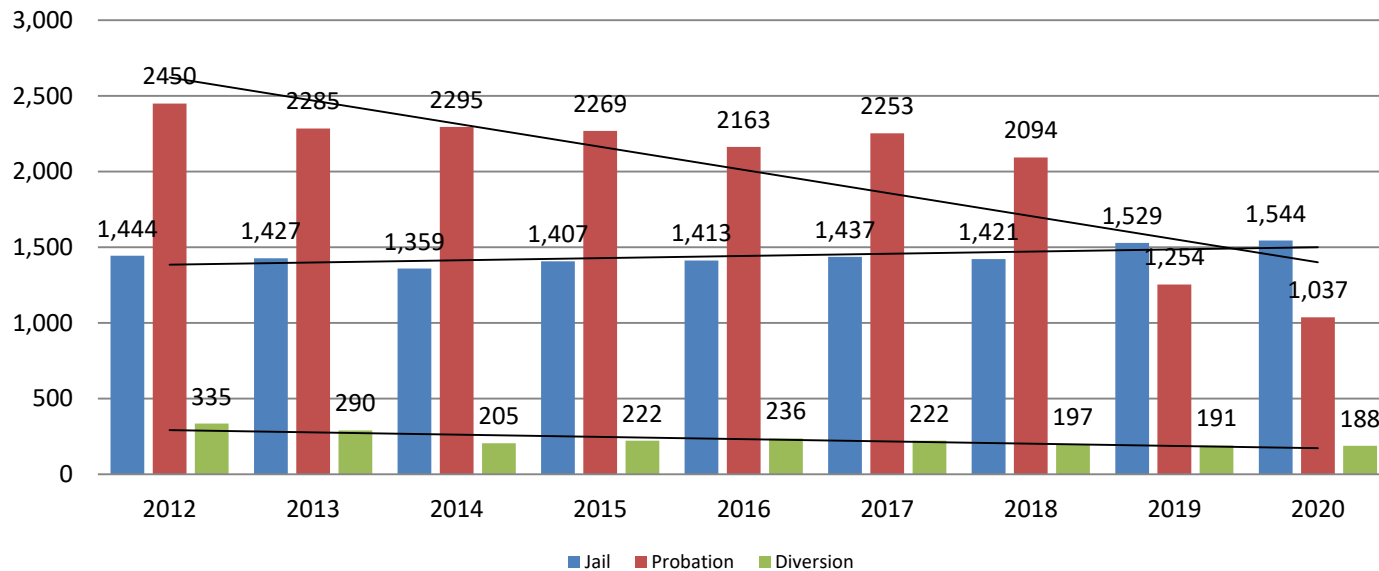


	2018	2019	2020
Jail	1,421	1,529	1,544
AISP	1,472	1,553	1,554
Drug Court	85	97	97
Adult Residential	59	65	56
Work Release	55	71	71
Day Reporting (DC)	0	0	0



# Correlation: Total & District Court Programs

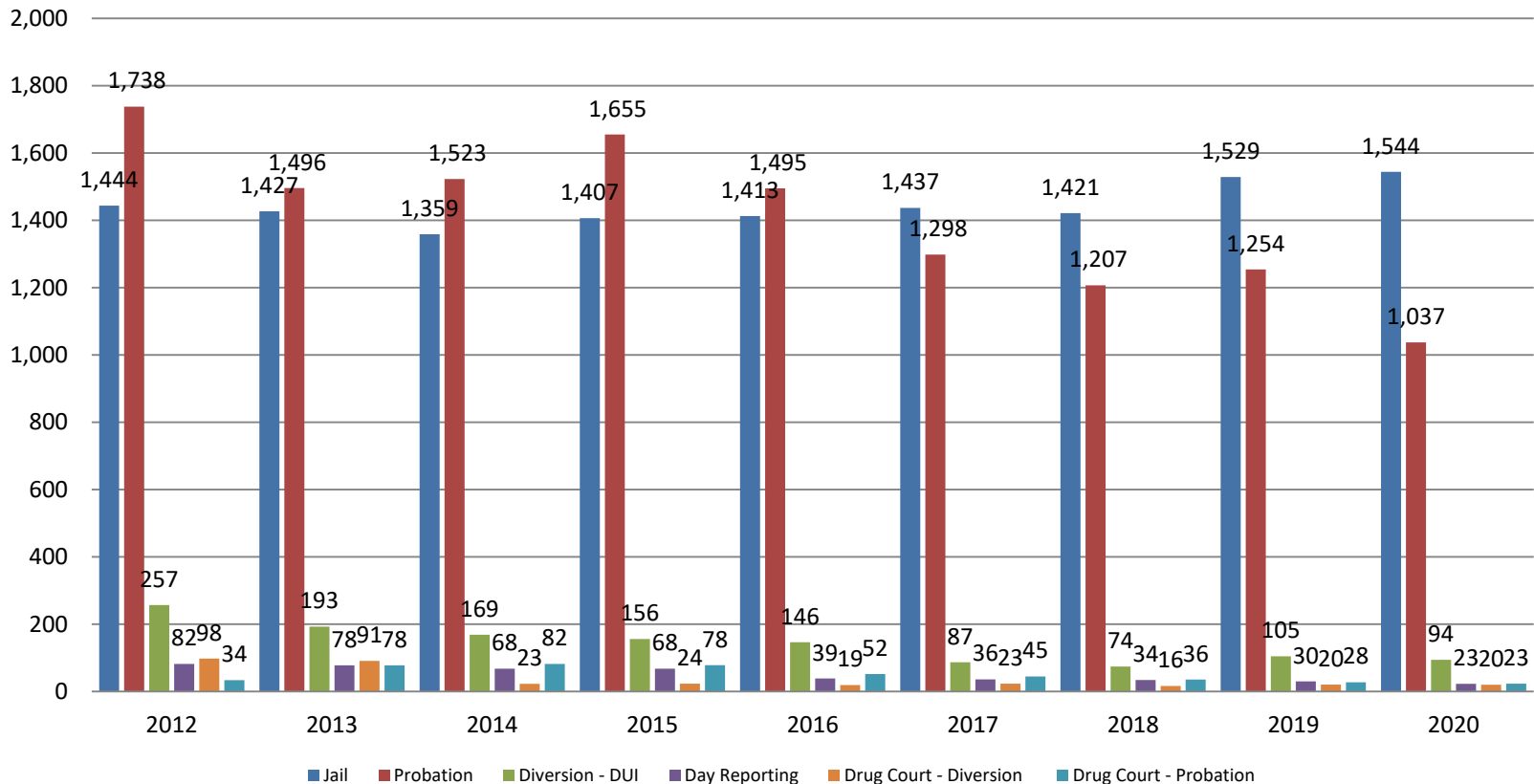
## Total Annual ADP: 2012 - present



Jail includes individuals in booking, detention, work release and out-of county (combined)  
 (data obtained from detention facility, DA's Office, & District Court)

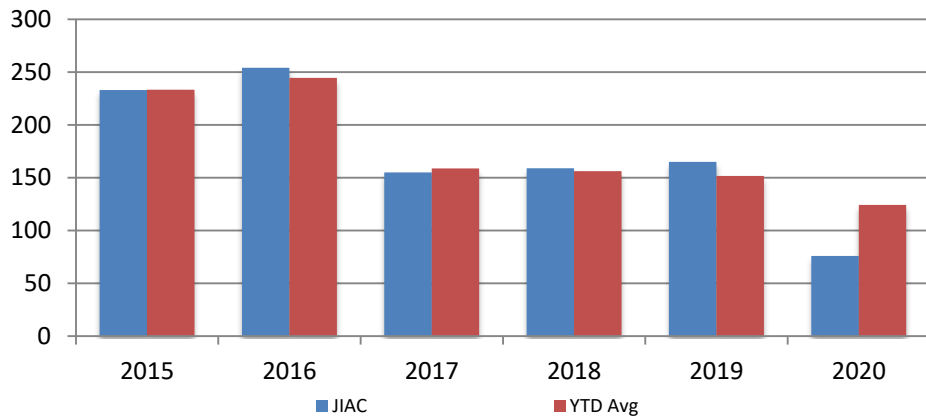
# Correlation: Total & City of Wichita / Municipal Court Programs

**Total Annual ADP: 2012 - present**



# Juvenile

**JIAC Intakes**  
April 2015 - present

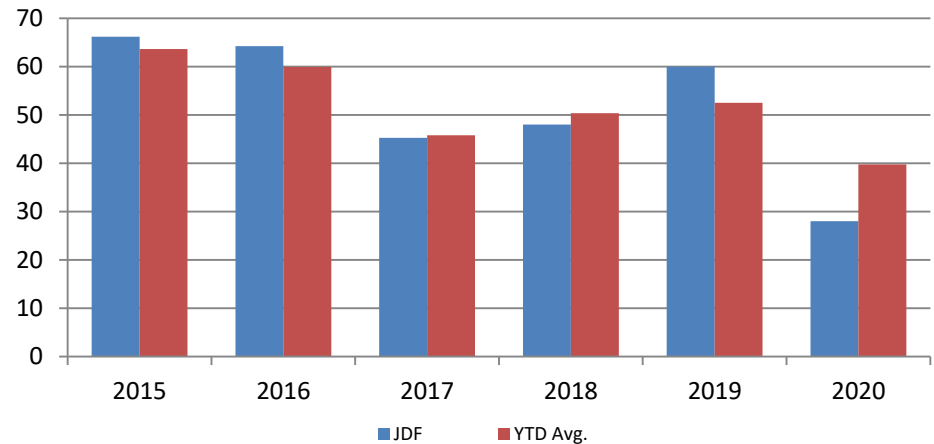


Year	April	April YTD Avg.
2015	233	233
2016	254	245
2017	155	159
2018	159	156
2019	165	152
2020	76	124

**Year**      **April**      **April YTD Avg.**

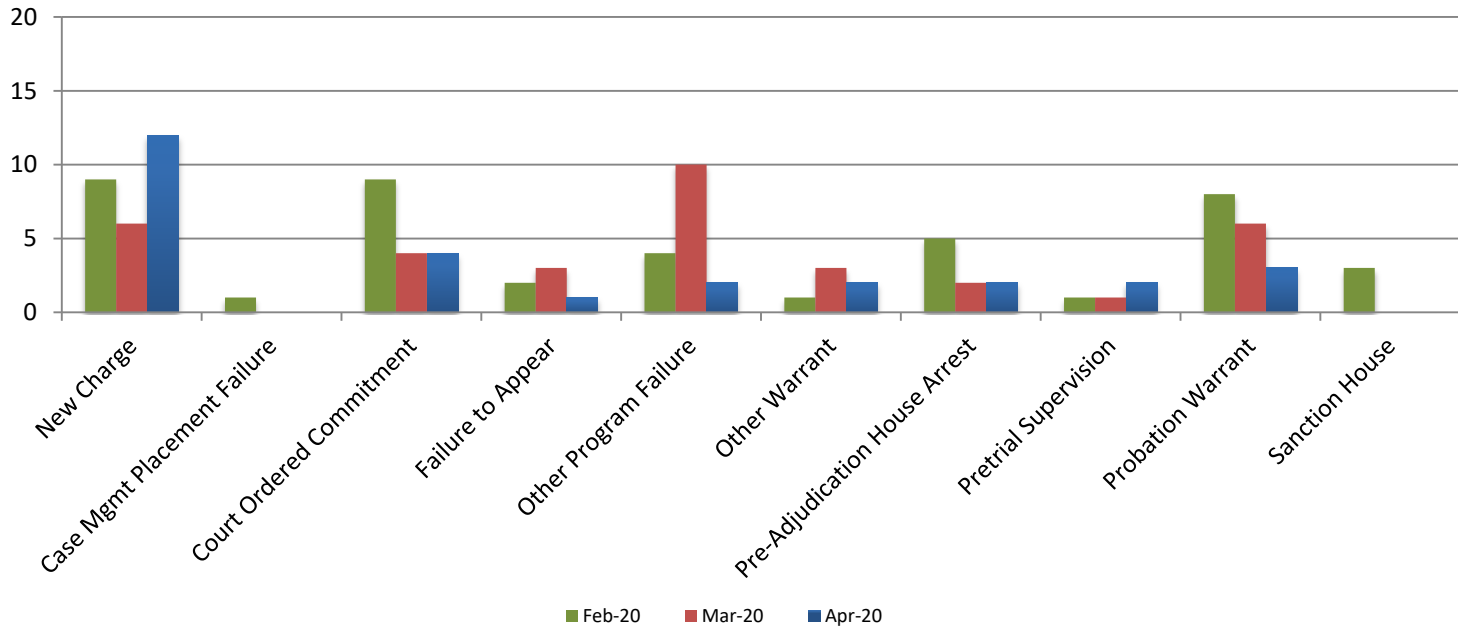
2015	66	64
2016	64	60
2017	45	46
2018	48	50
2019	60	53
2020	28	40

**JDF ADP**  
April 2015 - present





# Reason for JDF Admits



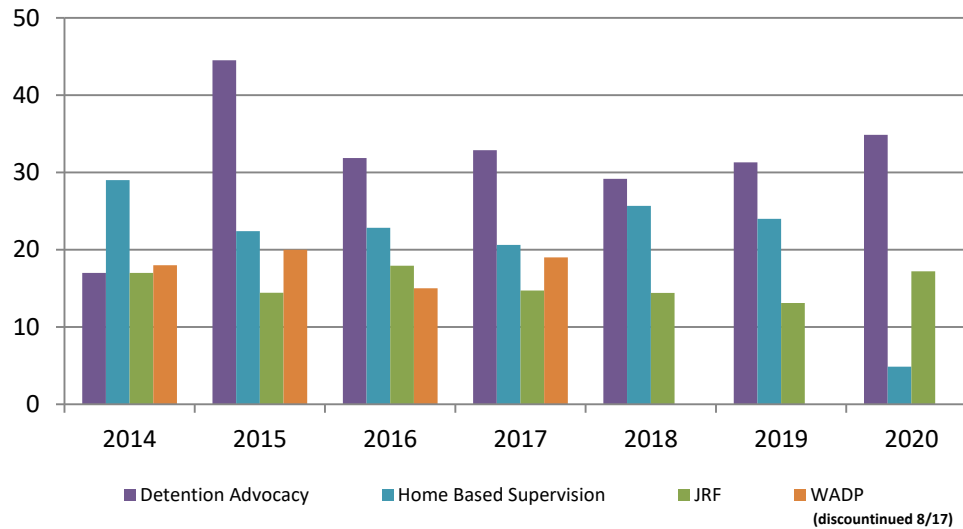
## Reason for JDF Admits

Reason	April 2019	April 2020
New Charges	10	12
Case Management Placement Failures	0	4
Court Ordered Commitment	4	4
Failure to Appear	8	1
Other Program Failure	6	2
Other Warrant	1	2
Pre-Adjudication House Arrest	8	2
Pretrial Supervision	0	2
Probation Warrant	15	3
Sanction House	8	0



# Juvenile Detention Alternatives

**ADP: April 2014 - present**



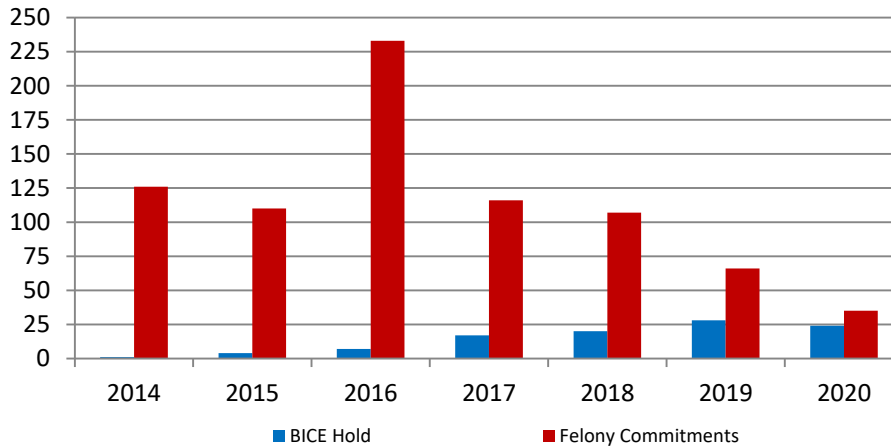
# Juvenile Detention Services

<b>April ADP</b>	<b>2017</b>	<b>2018</b>	<b>2019</b>	<b>2020</b>
Juvenile Detention Facility	45	48	60	28
Juvenile Residential Facility	15	14	13	17
Home Based Supervision	21	26	24	5
Detention Advocacy Case Management Services	33	29	31	35
Weekend Alternative Detention Program (total)	19	0	N/A	N/A

<b>April YTD AVERAGE</b>	<b>2017</b>	<b>2018</b>	<b>2019</b>	<b>2020</b>
Juvenile Detention Facility	46	50	53	40
Juvenile Residential Facility	14	13	13	18
Home Based Supervision	24	28	28	21
Detention Advocacy Case Management Services	36	32	29	17
Weekend Alternative Detention Program	17	0	N/A	N/A

# Monthly Jail Snapshot: January 31, 2020

Snapshots April 2014 - present



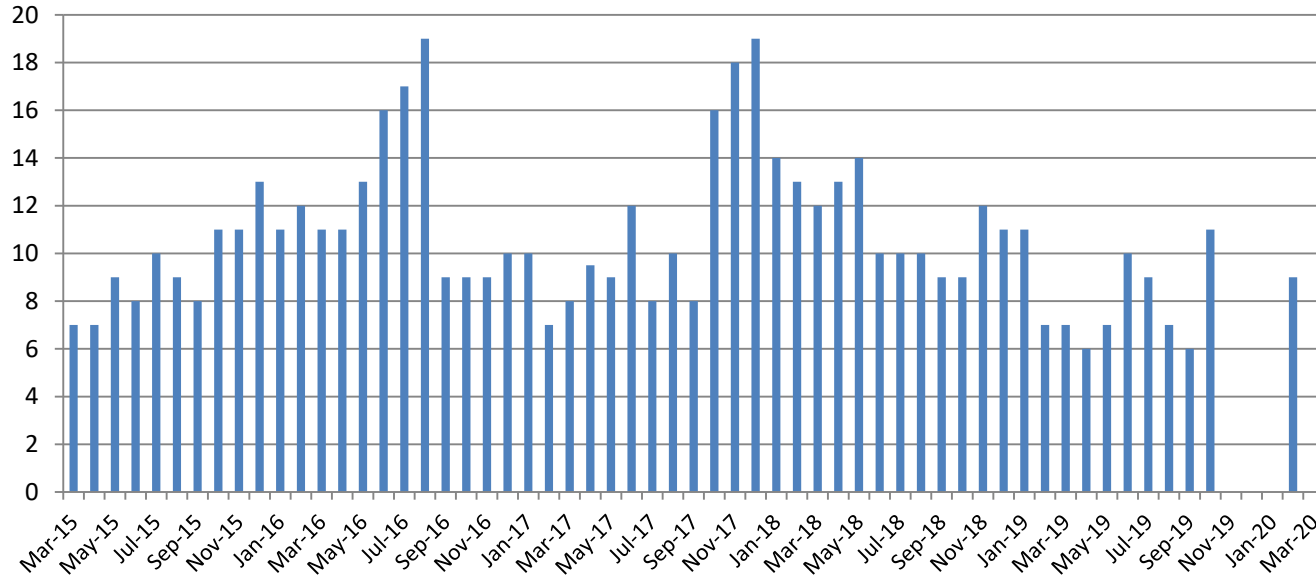
<b>BICE Hold</b>	<b>2014</b>	<b>2015</b>	<b>2016</b>	<b>2017</b>	<b>2018</b>	<b>2019</b>	<b>2020</b>
<b>April</b>	1	4	7	17	20	28	24

<b>Felony Commitments</b>	<b>2014</b>	<b>2015</b>	<b>2016</b>	<b>2017</b>	<b>2018</b>	<b>2019</b>	<b>2020</b>
<b>April</b>	126	110	233	116	107	66	35



## Journal Entry Completion (Average Days) March 2014 - present



March	2015	2016	2017	2018	2019	2020
Avg. Days	7	11	9.5	13	6	ND
YTD Avg.	8	11	9	13	7.75	ND

