



# Criminal Justice Coordinating Council

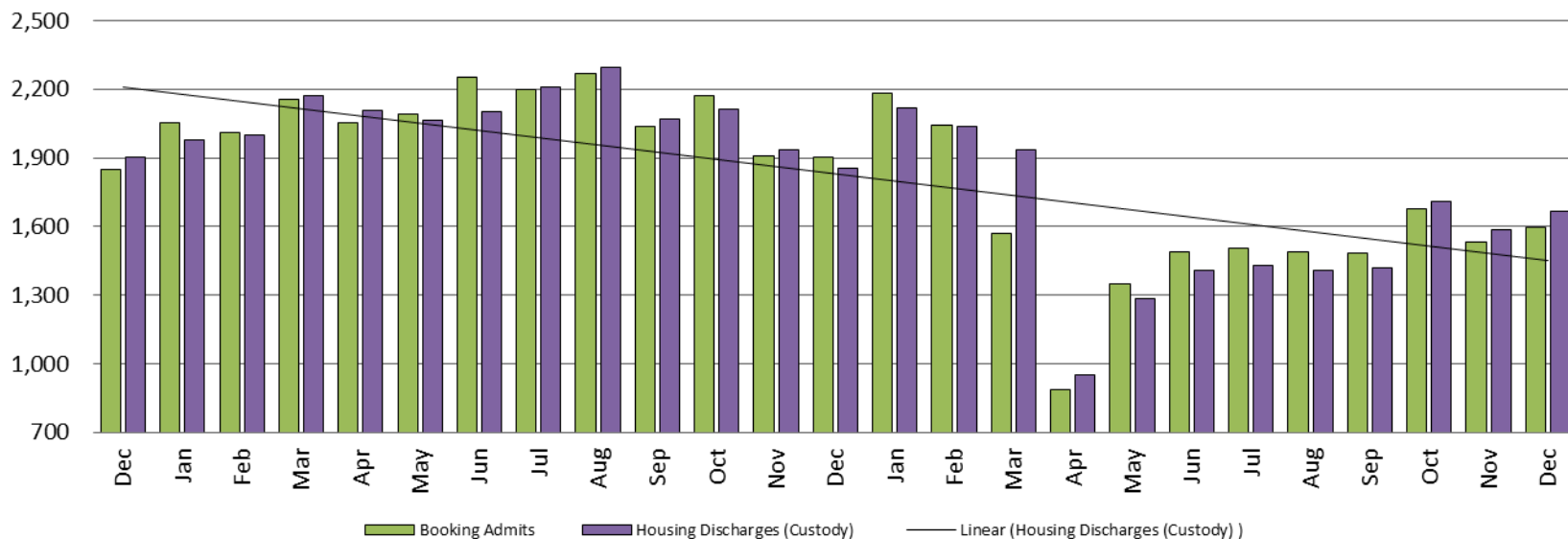
## Population Report & Program Trends

December 2020

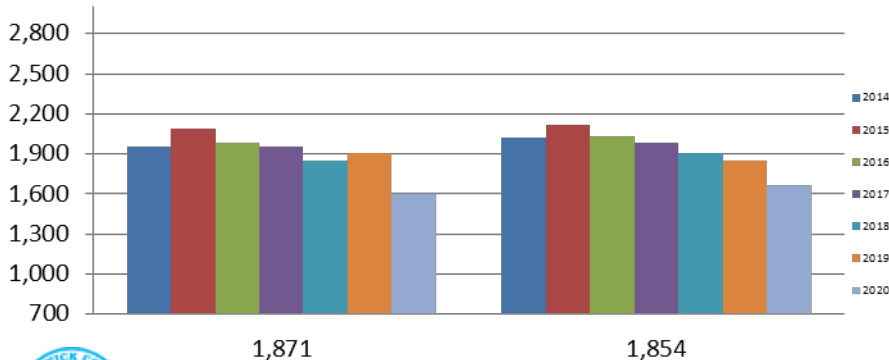
# Detention Facility

## Booking Admits & Housing Discharges from Custody

### December 2018 - present



### Bookings Year over Year: Month of December



### Bookings December

2018: 1,849

2019: 1,904

2020: 1,595

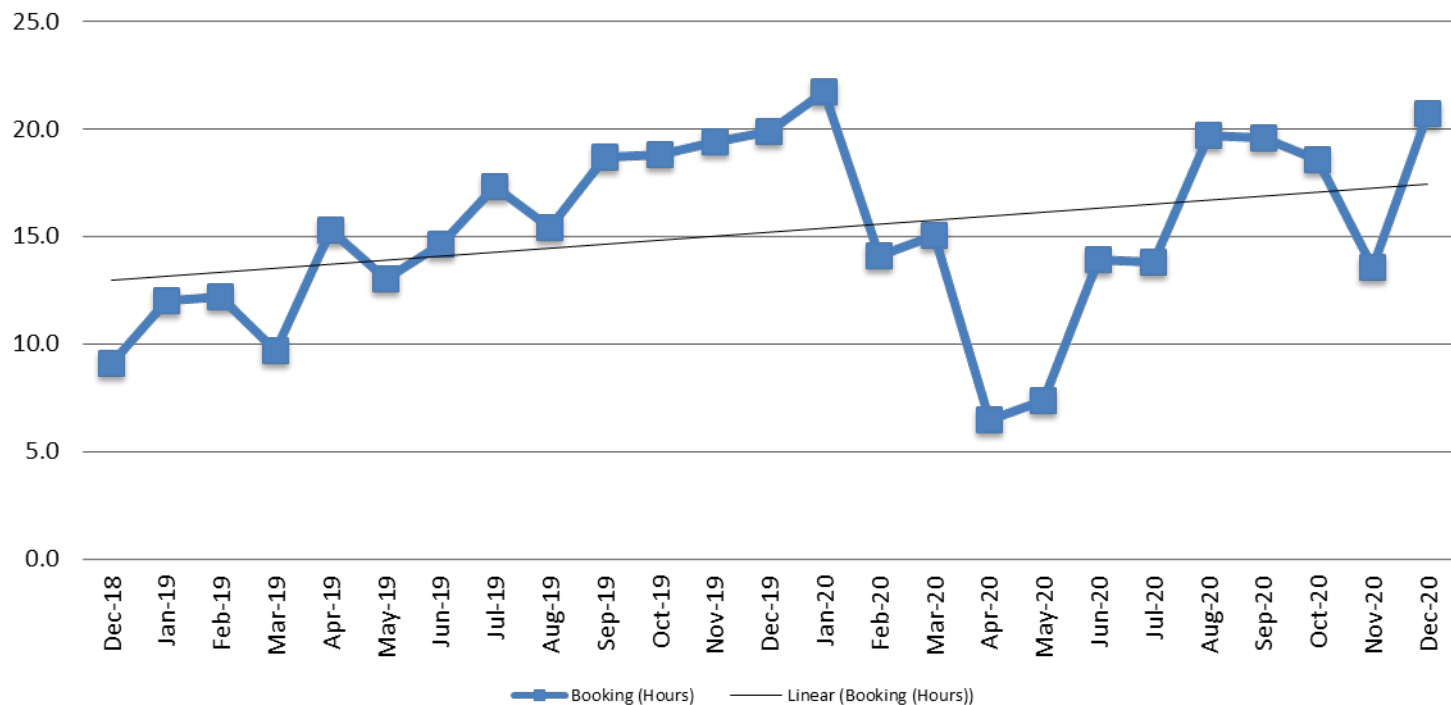
### Housing Discharges December

2018: 1,903

2019: 1,853

2020: 1,667

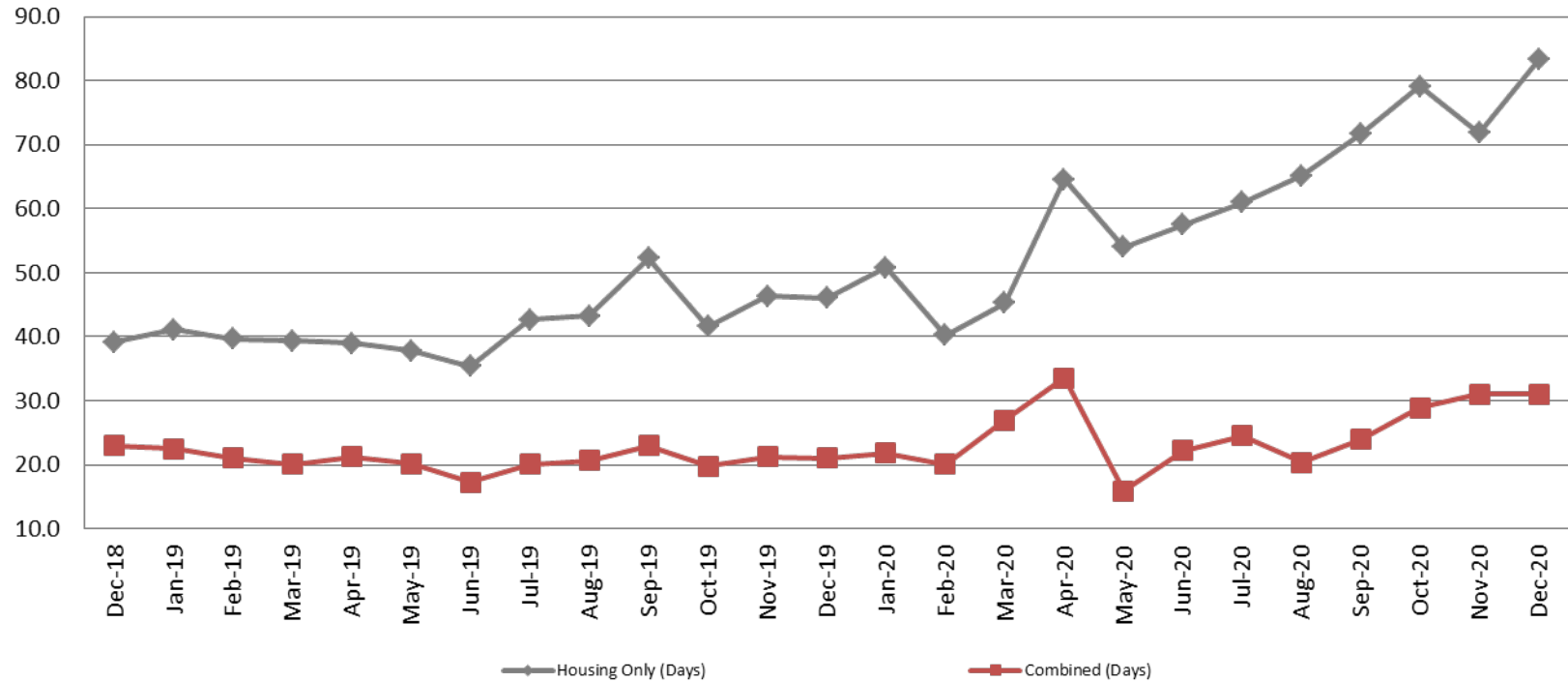
## Average Length of Stay: Booking (Hours) December 2018 - present



December	December YTD Average
2018: 9.1	2018: 10.3
2019: 19.9	2019: 15.5
2020: 20.7	2020: 15.4

# Average Length of Stay: Housing & Combined (Days)

## December 2018 - present

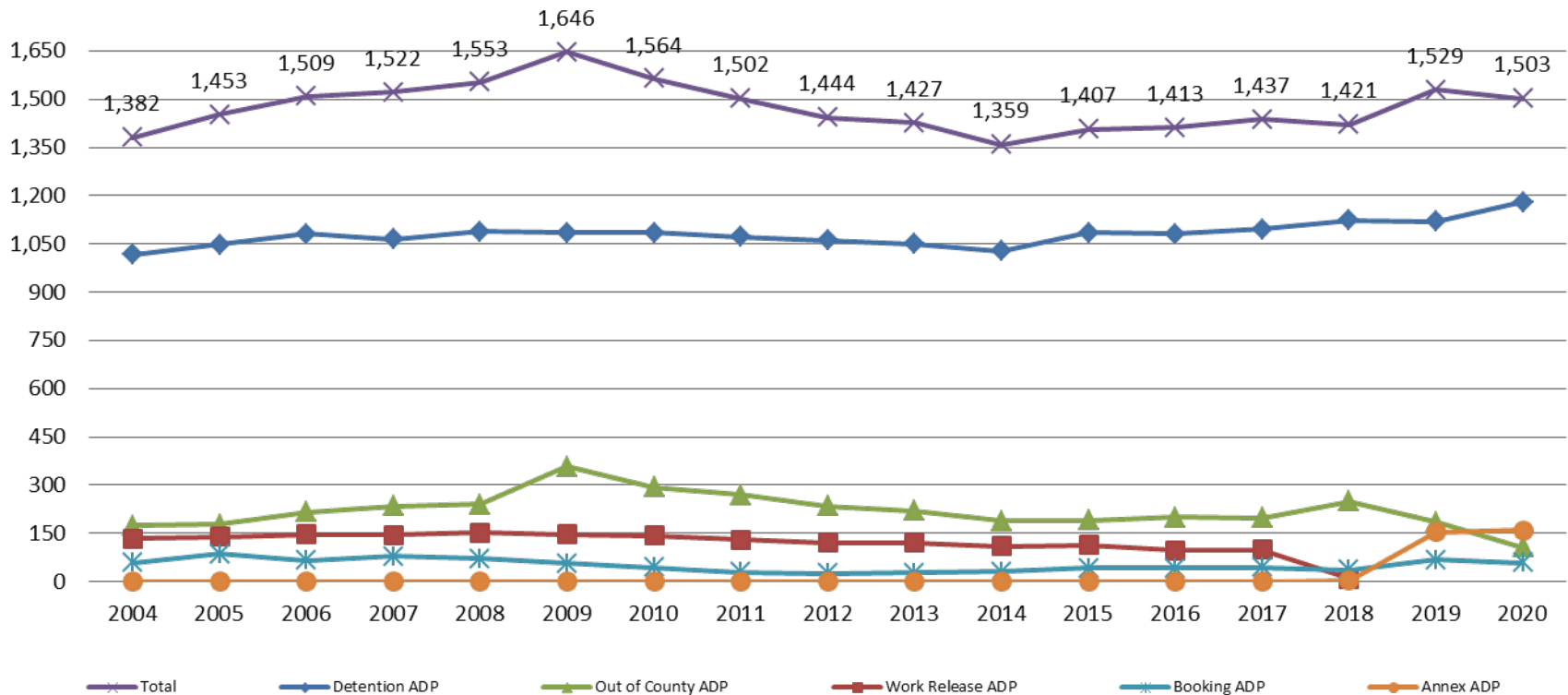


Month Year	Housing Only	Housing YTD AVG	Combined Days	Combined YTD AVG
December 2018	39.2	34.7	23.0	21.0
December 2019	46.0	42.0	21.0	20.7
December 2020	83.3	62.0	31.1	25.0



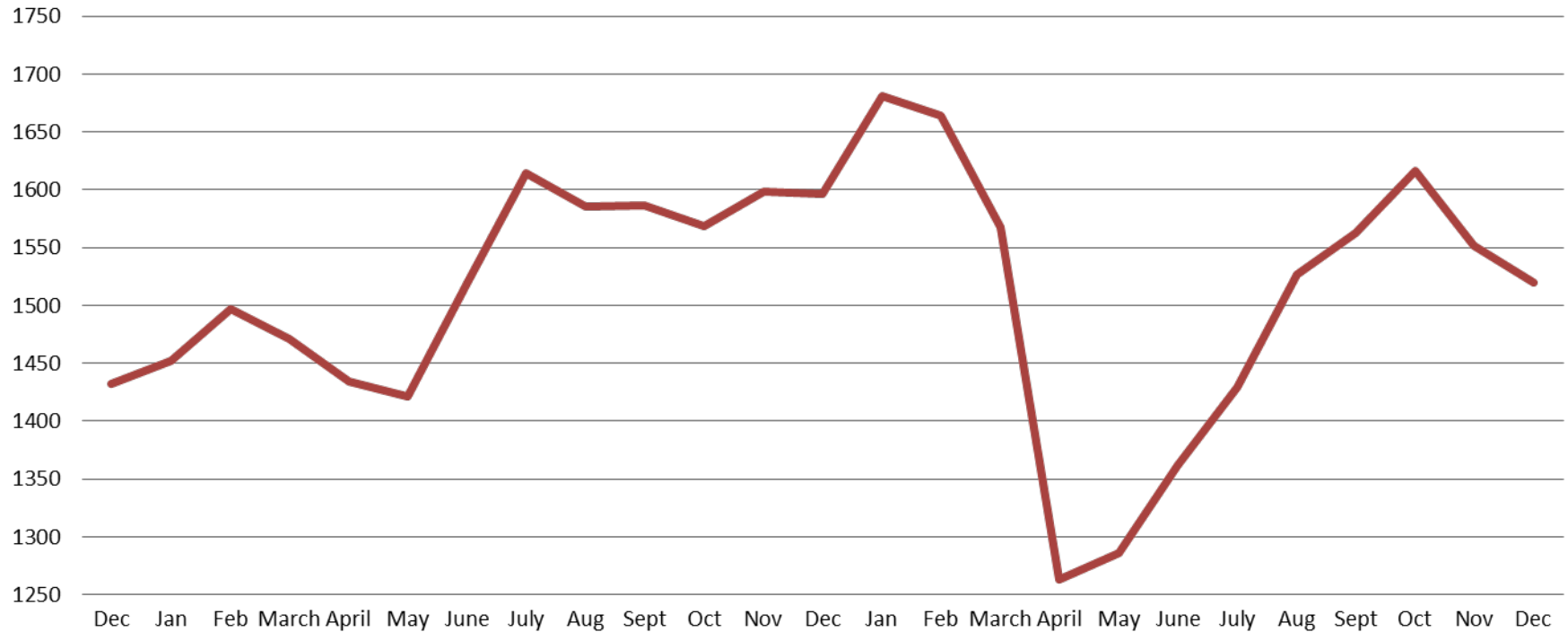
# Jail: Annual Average Daily Population (ADP)

**TRENDS: Booking, Detention, Work Release, & Out of County Annual ADP: 2004 - present**





# TOTAL MONTHLY ADP: JAIL (Booking, Detention Facility, Annex, & Out of County) December 2018 - present

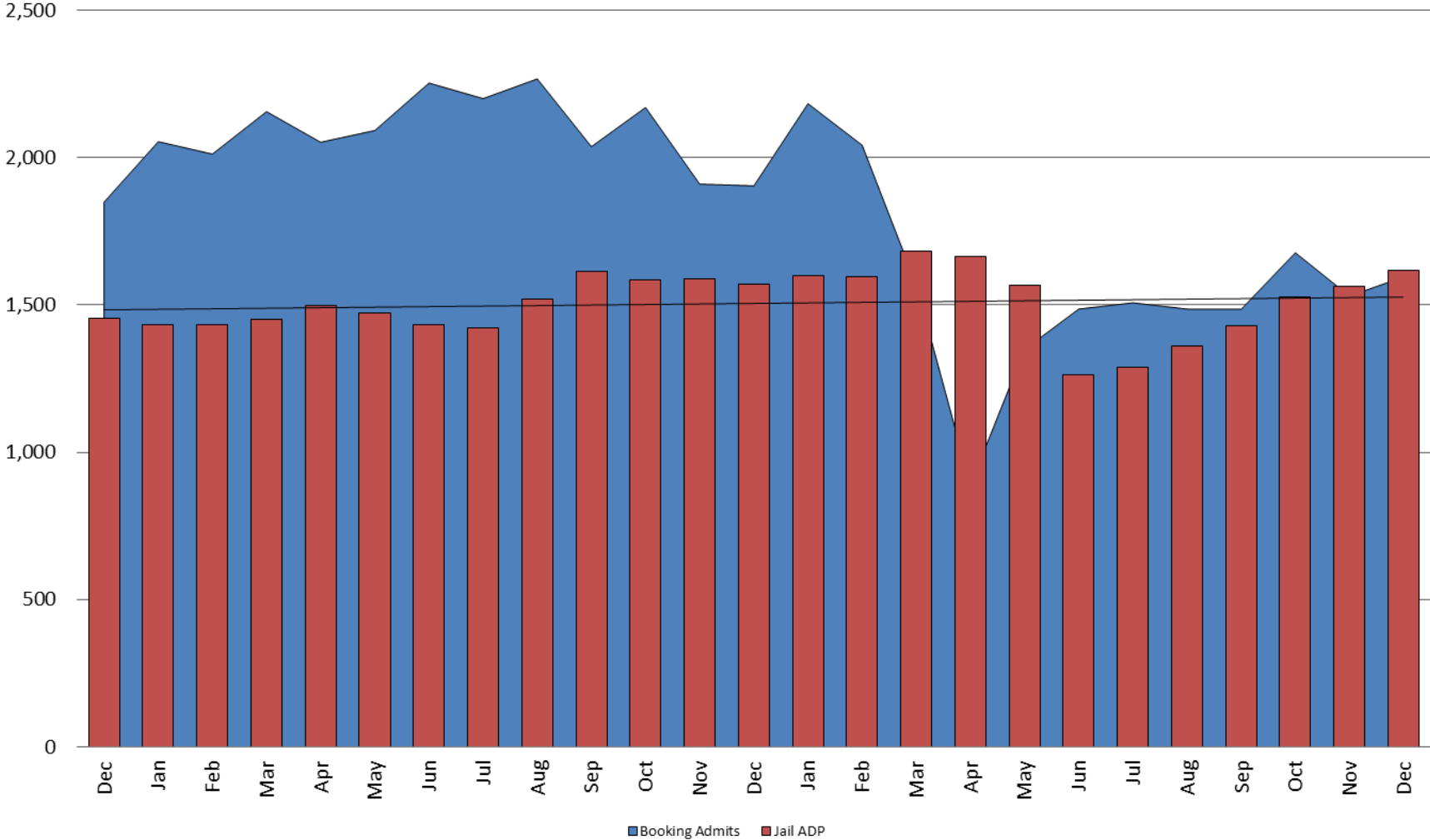


December 2018	December 2019	December 2020
1,432	1,597	1,520



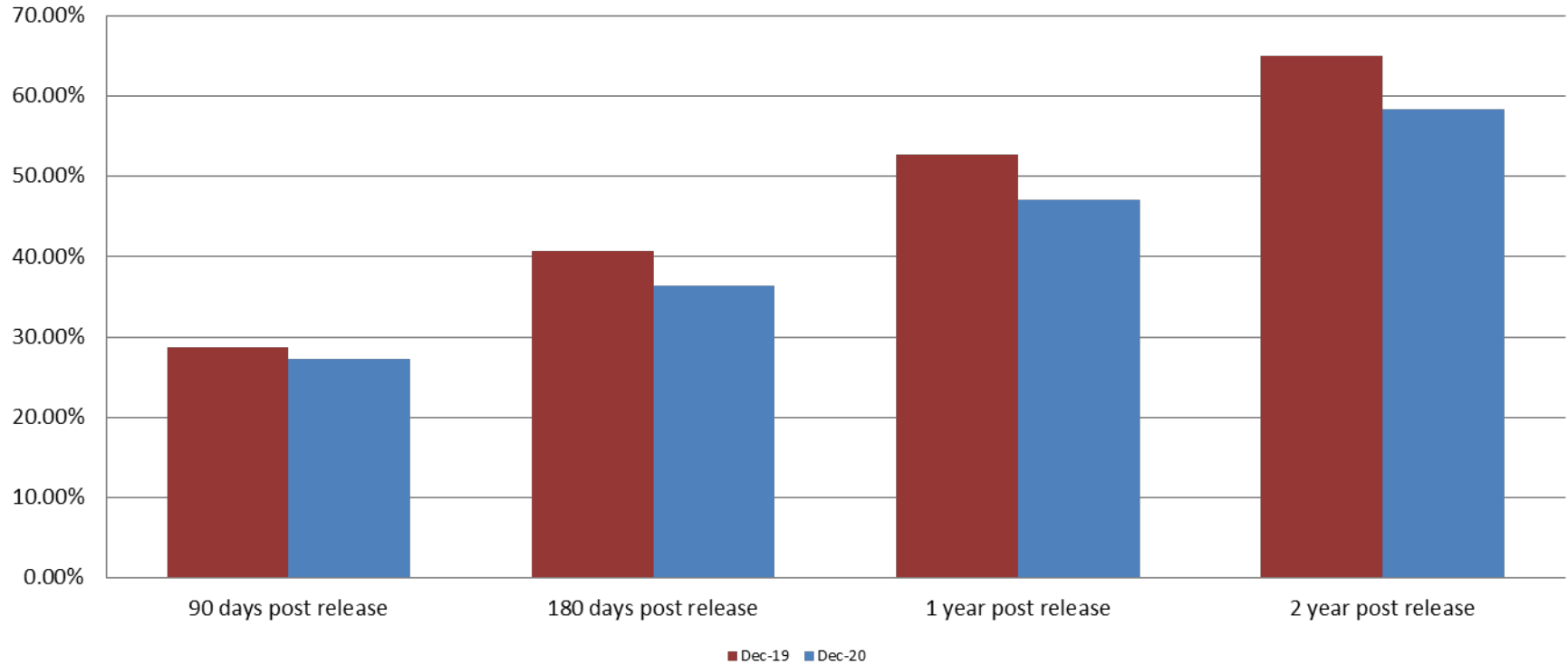


# Booking Admits & Total Monthly ADP (Jail): December 2018 - present





## Percent of released inmates rearrested December



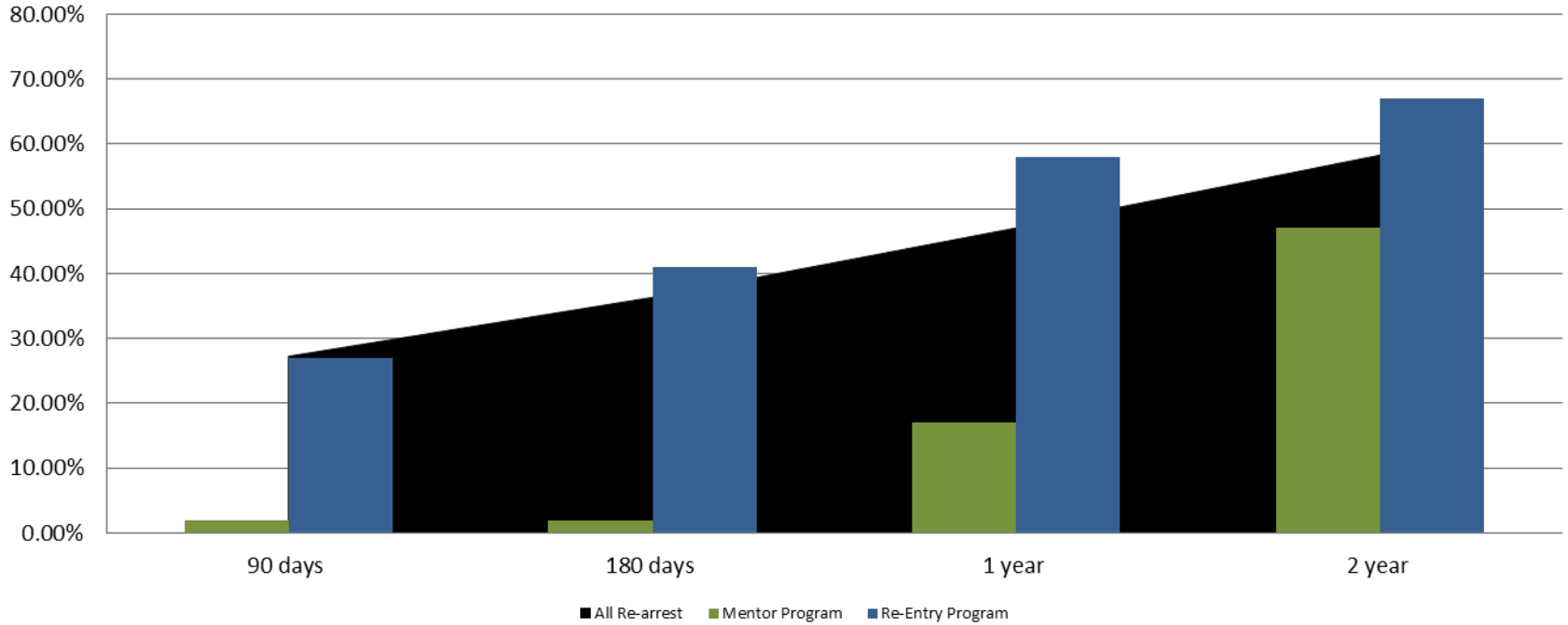
Month Year	90 Days	180 Days	1 Year	2 Years
December 2019	28.69%	40.76%	52.68%	64.99%
December 2020	27.27%	36.35%	47.07%	58.31%







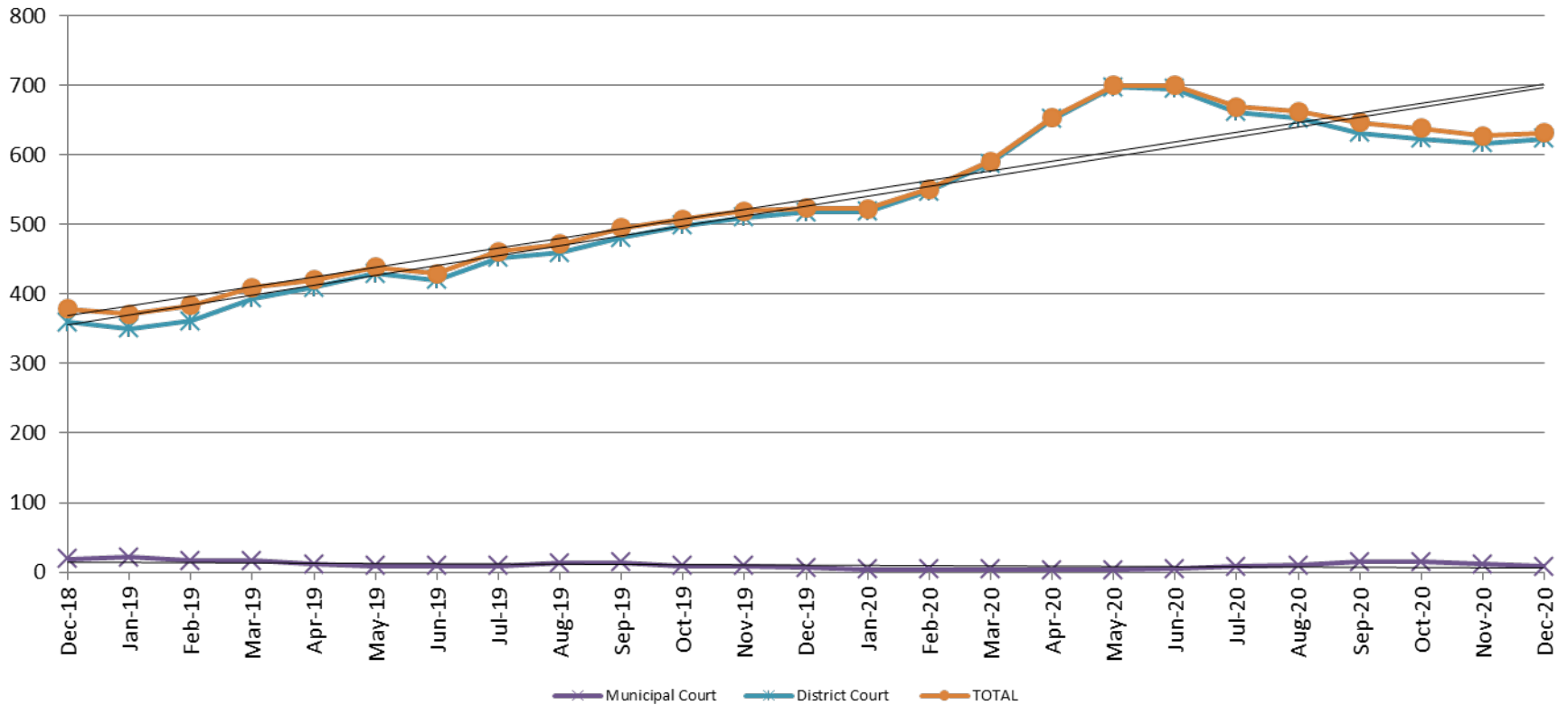
## Recidivism by Programs December 2020



December 2020	90 Days	180 Days	1 year	2 years
All Re-arrests	27.27%	36.35%	47.07%	58.31%
Mentor Program	2%	2%	17%	47%
Re-Entry Program	27%	41%	58%	67%



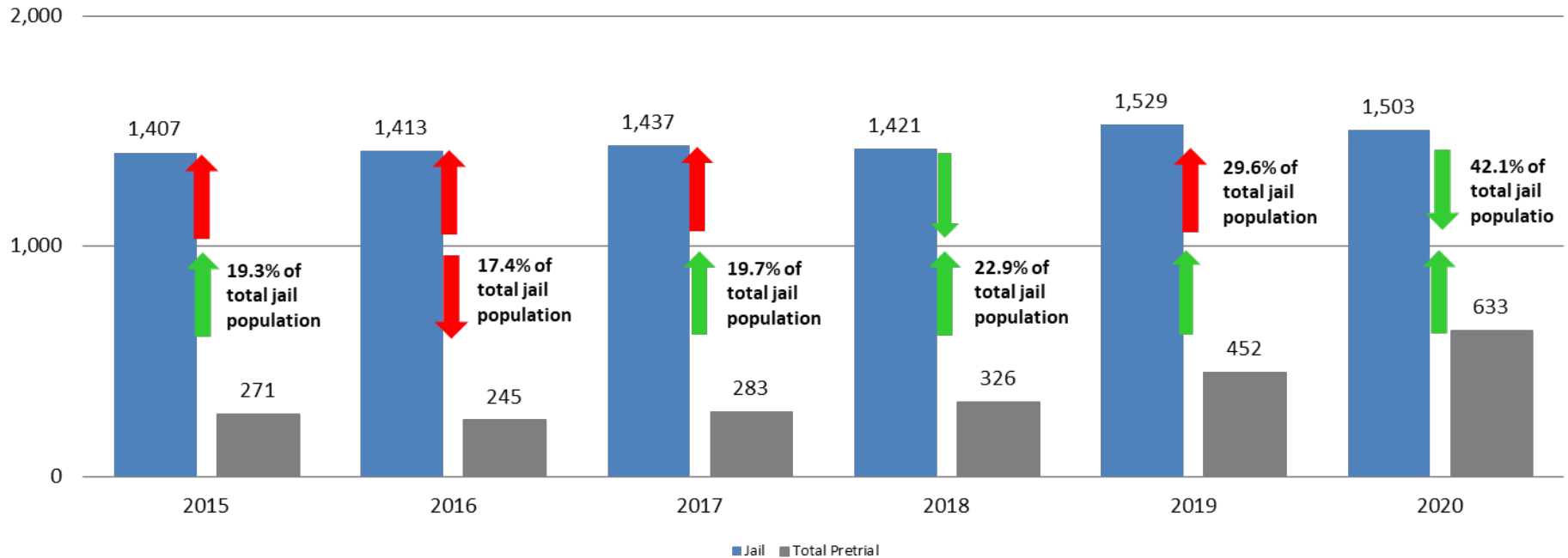
# Pretrial Services Program (PSP) Monthly ADP: December 2018 - present



December	2018 ADP	2019 ADP	2020 ADP	2018 YTD Avg.	2019 YTD Avg.	2020 YTD Avg.
Muni. Court	19	6	8	24	12	8
Dist. Court	359	517	623	301	440	625
<b>Total</b>	<b>378</b>	<b>523</b>	<b>631</b>	<b>326</b>	<b>452</b>	<b>633</b>

# Correlation: Total & PSP

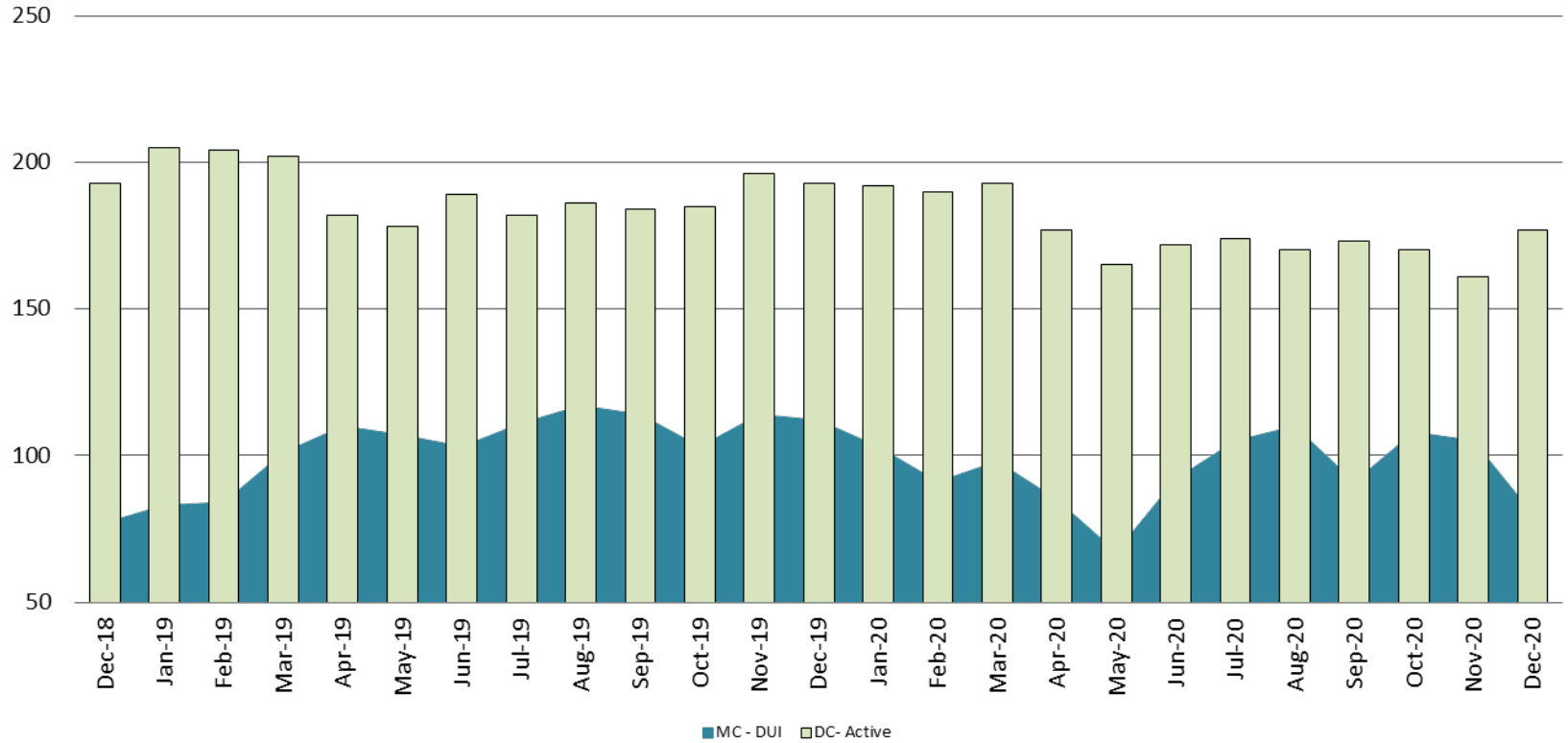
## Total Annual ADP: 2015 - present





# Diversion - Active Caseload

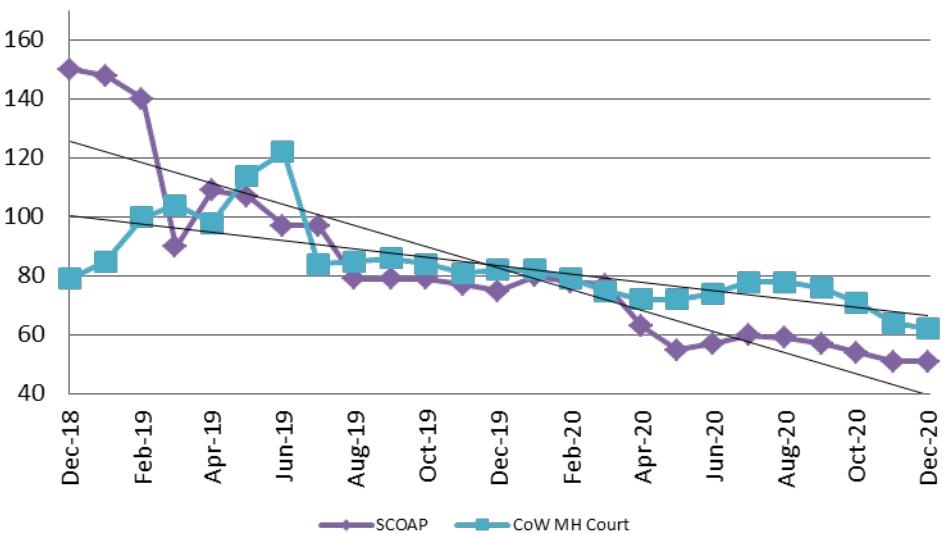
December 2018 - present



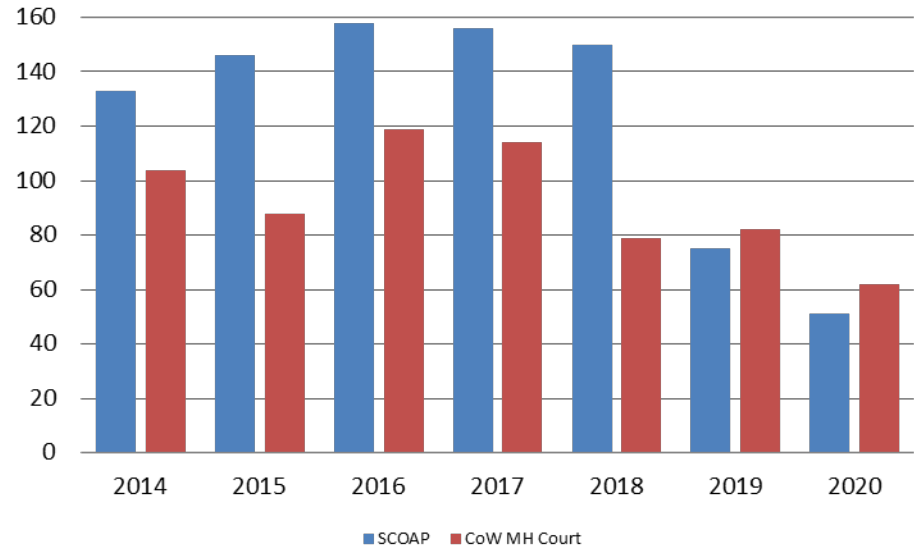
December	2018	2019	2020	2018 YTD Avg.	2019 YTD Avg.	2020 YTD Avg.
Muni. Court- DUI	77	112	80	74	105	95
Dist. Court- Active	193	193	177	197	191	176



## Mental Health - ADP December 2018 - present



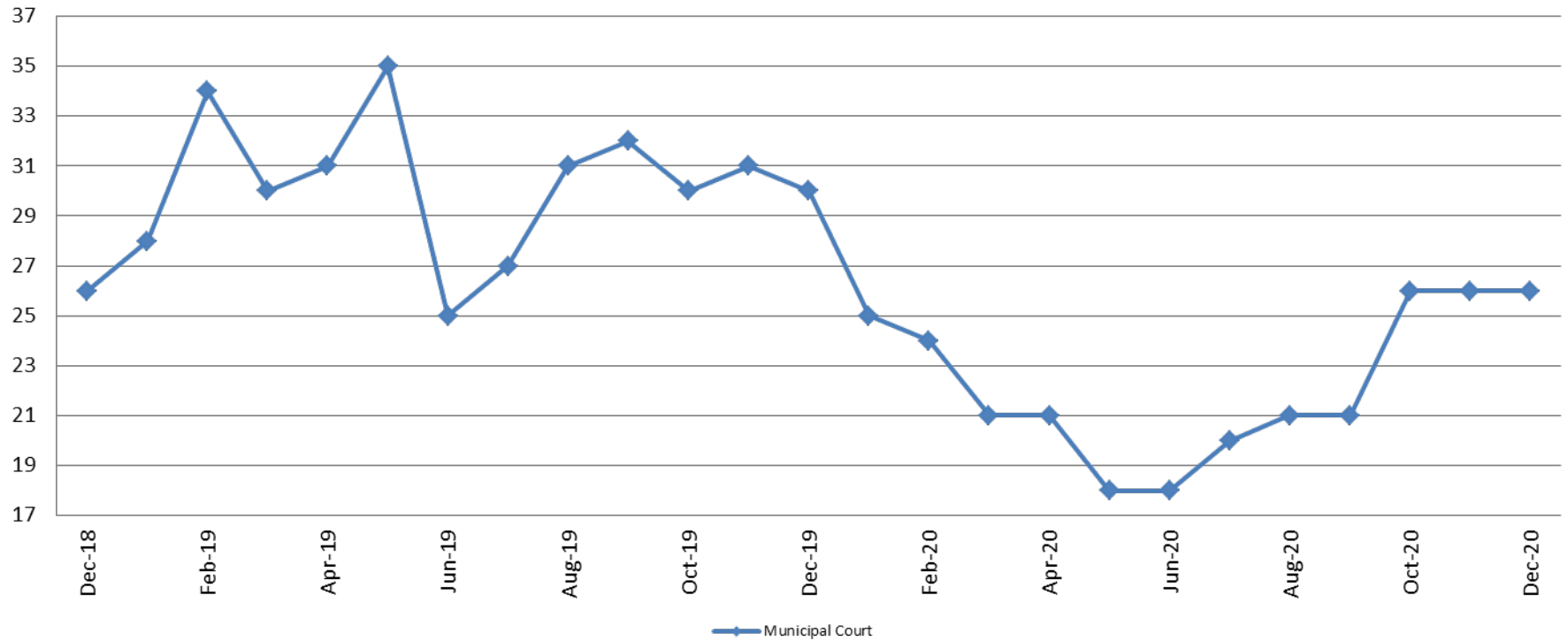
## Mental Health ADP Year over Year - December



December	2018 ADP	2019 ADP	2020 ADP	2018 YTD Avg.	2019 YTD Avg.	2020 YTD Avg.
SCOAP	150	75	51	147	98	62
MH Court	79	82	62	96	94	74



# Day Reporting - Active Caseload December 2018 - present

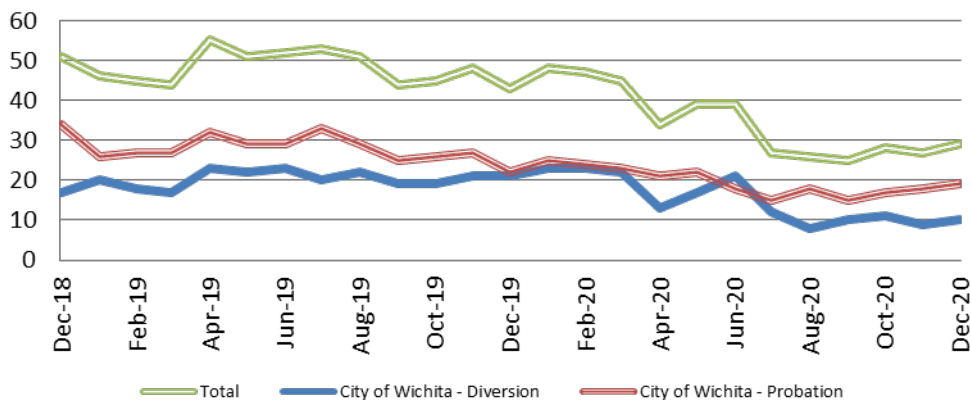


December	2015	2016	2017	2018	2019	2020
Muni. Court	57	26	37	26	30	26
Muni. Court YTD Avg.	68	39	36	33	30	22

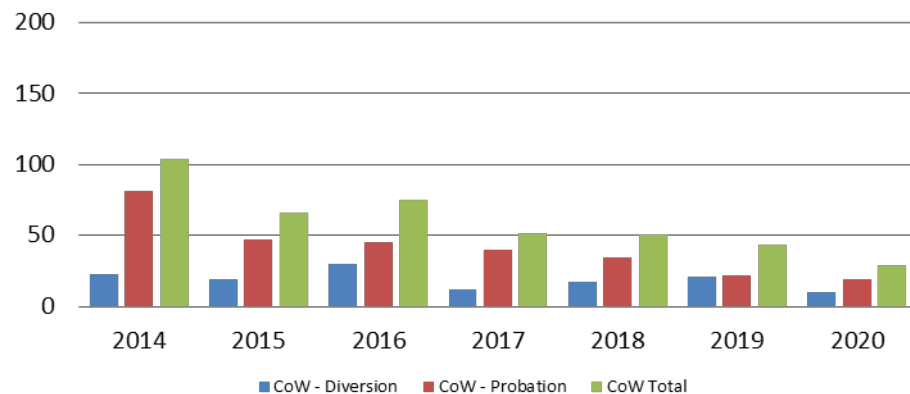




## Drug Court - City of Wichita ADP: December 2018 - present



## Drug Court- City of Wichita Year over Year - December

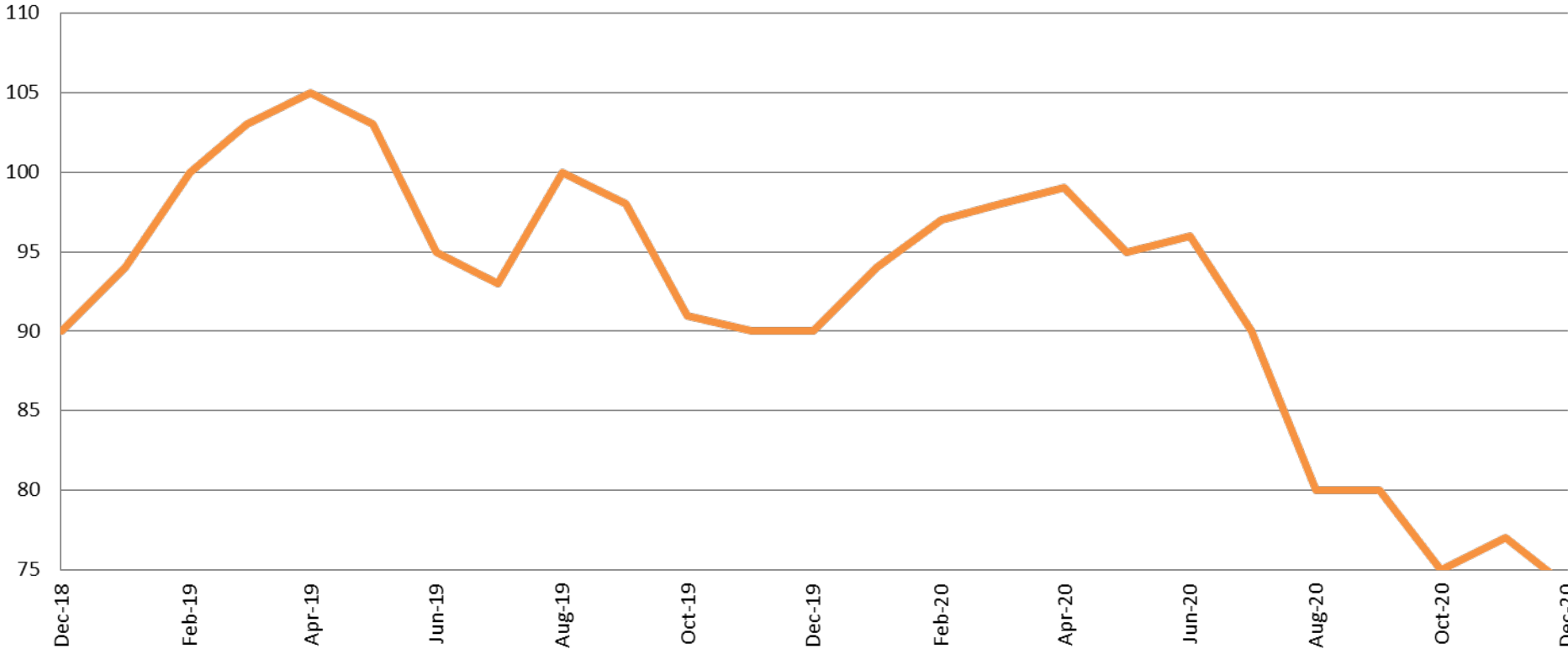


December	2018	2019	2020
Diversion	17	21	10
Probation	34	22	19
Total	51	43	29





# Drug Court - Sedgwick County ADP: December 2018 - present

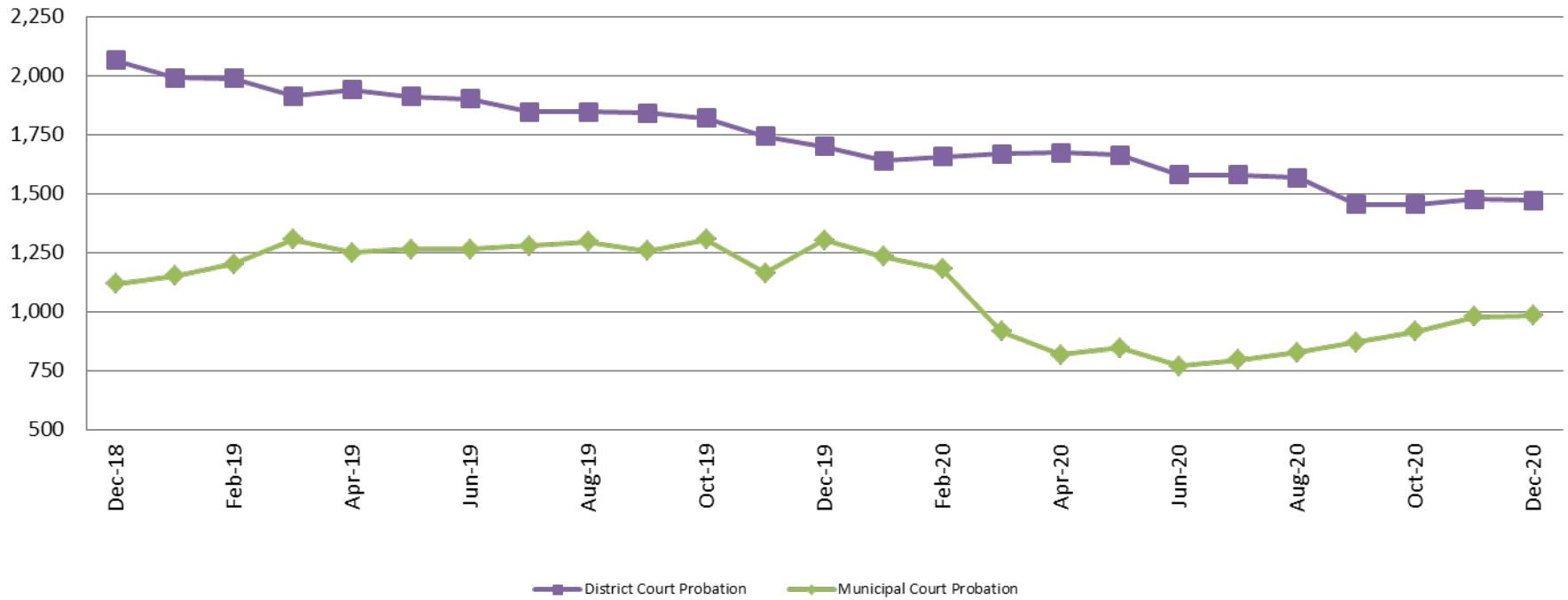


<b>December</b>	<b>2018</b>	<b>2019</b>	<b>2020</b>
Sedg. Co. ADP	90	90	77
YTD Avg.	85	97	88





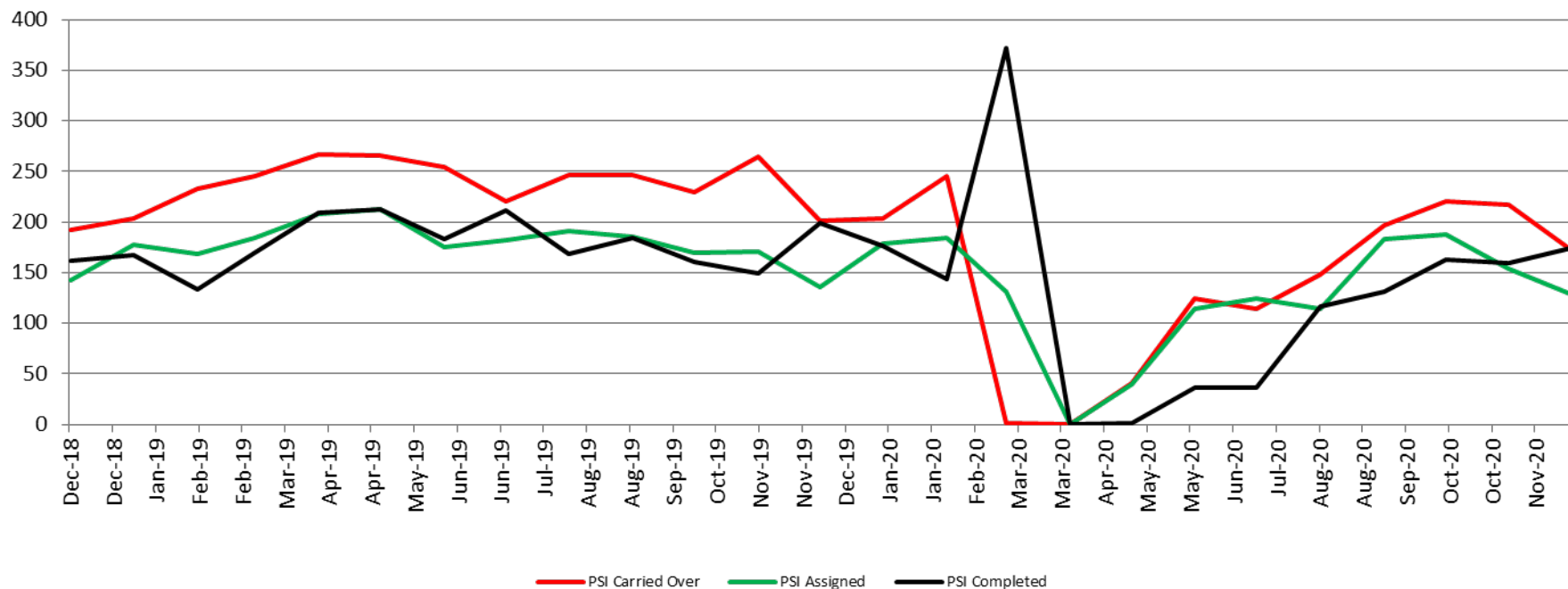
## Probation - Active Caseloads December 2018 - present



December	2018	2019	2020	2018 YTD Avg.	2019 YTD Avg.	2020 YTD Avg.
Dist. Court Probation	2,065	1,701	1,472	2,094	1,871	1,574
Muni. Court Probation	1,118	1,303	983	1,207	1,254	928



## District Court Probation: Pre-Sentence Investigation December 2018 - present

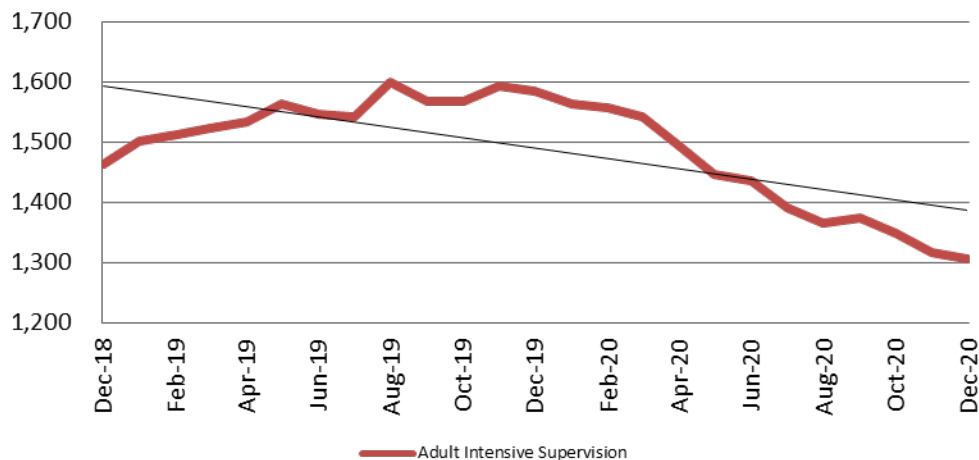


December	2018	2019	2020
Carried Over	192	201	173
Assigned	143	136	129
Completed	162	199	174



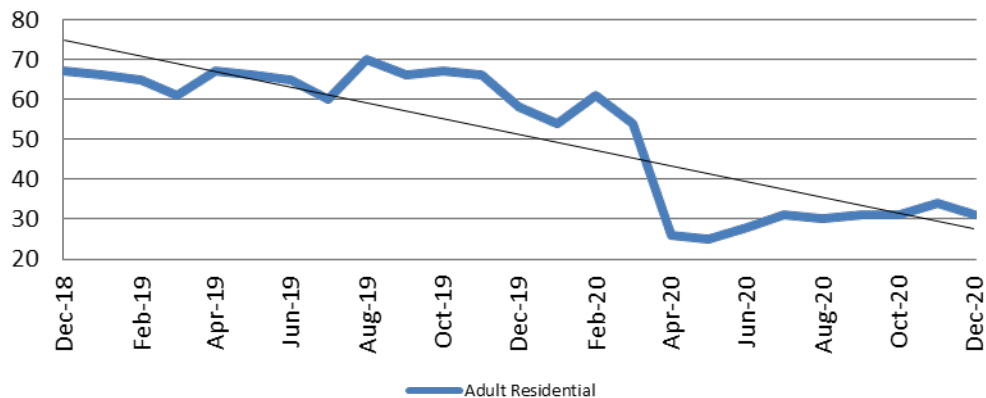
# Community Corrections

**Adult Intensive Supervision Probation (AISP):  
ADP December 2018- present**



Year	December	December YTD Avg.
2018	1,464	1,472
2019	1,585	1,553
2020	1,305	1,428

**Adult Residential: ADP  
December 2018 - present**



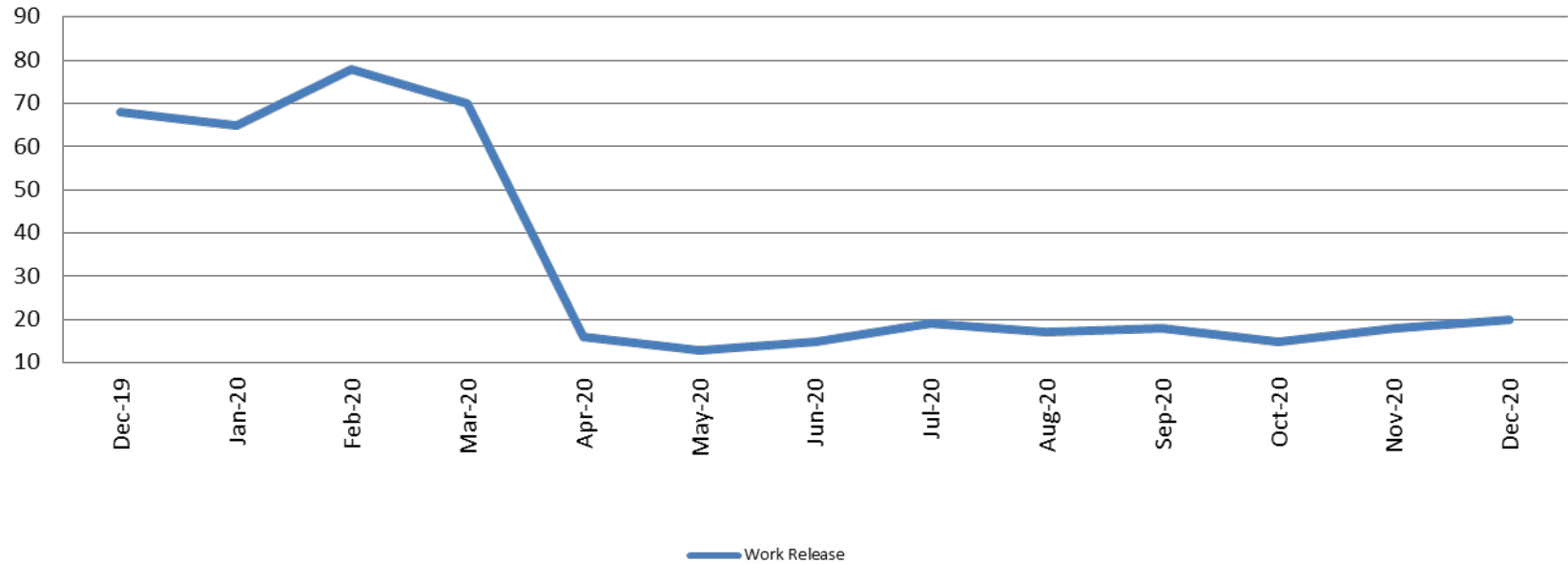
Year	December	December YTD Avg.
2018	67	59
2019	58	65
2020	31	36





# Community Corrections

## Work Release: ADP December 2019 - present

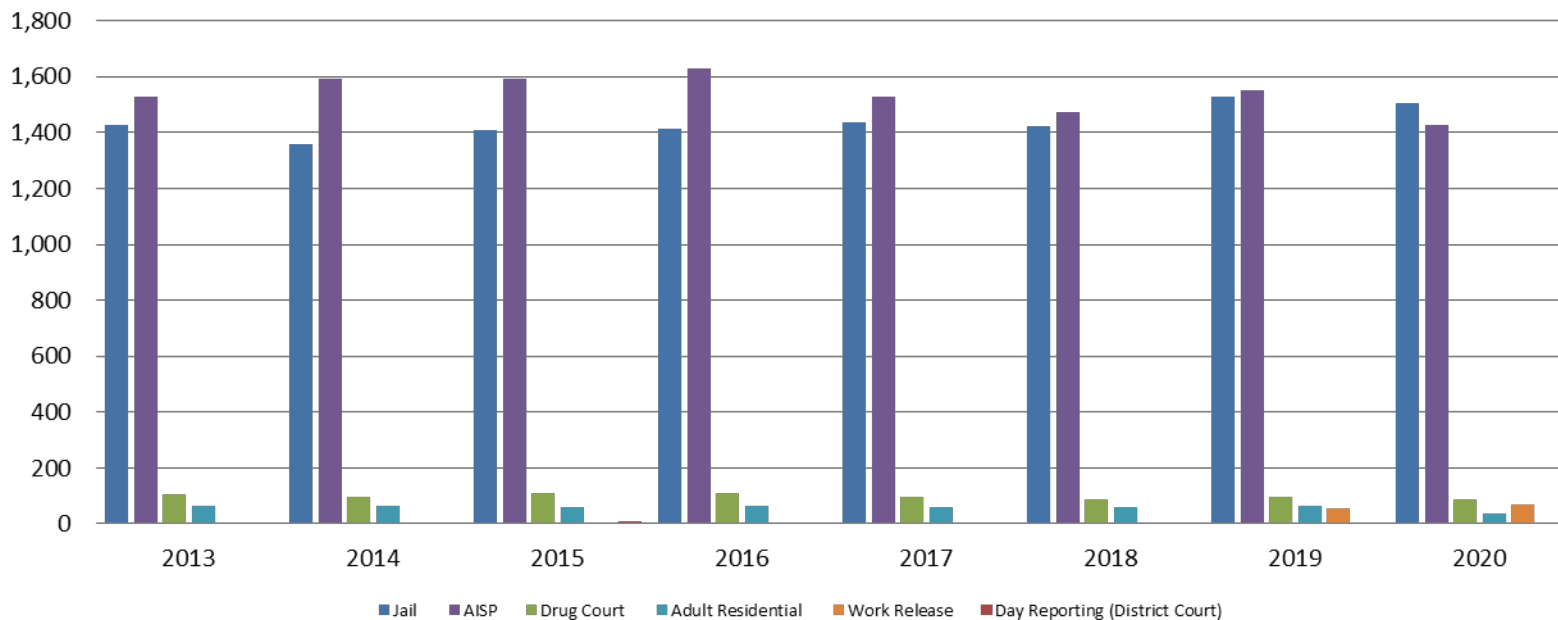


Month Year	Total	YTD Avg.
December 2019	68	71
December 2020	20	30



# Correlation: Total & Sedgwick County Programs (Adult)

Total Annual ADP 2013 - present

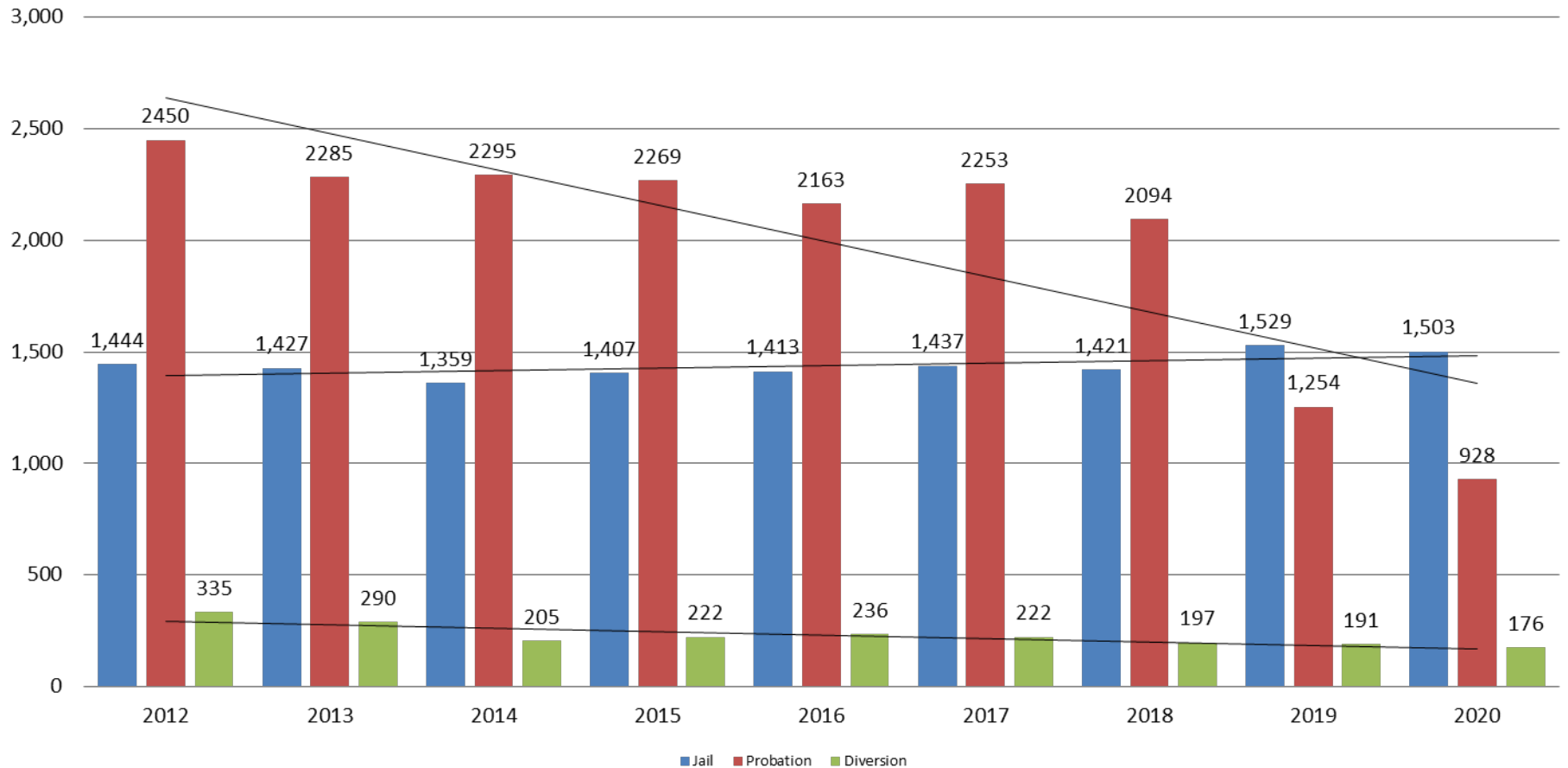


	2018	2019	2020
Jail	1,421	1,529	1,503
AISP	1,472	1,553	1,428
Drug Court	85	97	88
Adult Residential	59	65	36
Work Release	55	71	30
Day Reporting (DC)	0	0	0



# Correlation: Total & District Court Programs

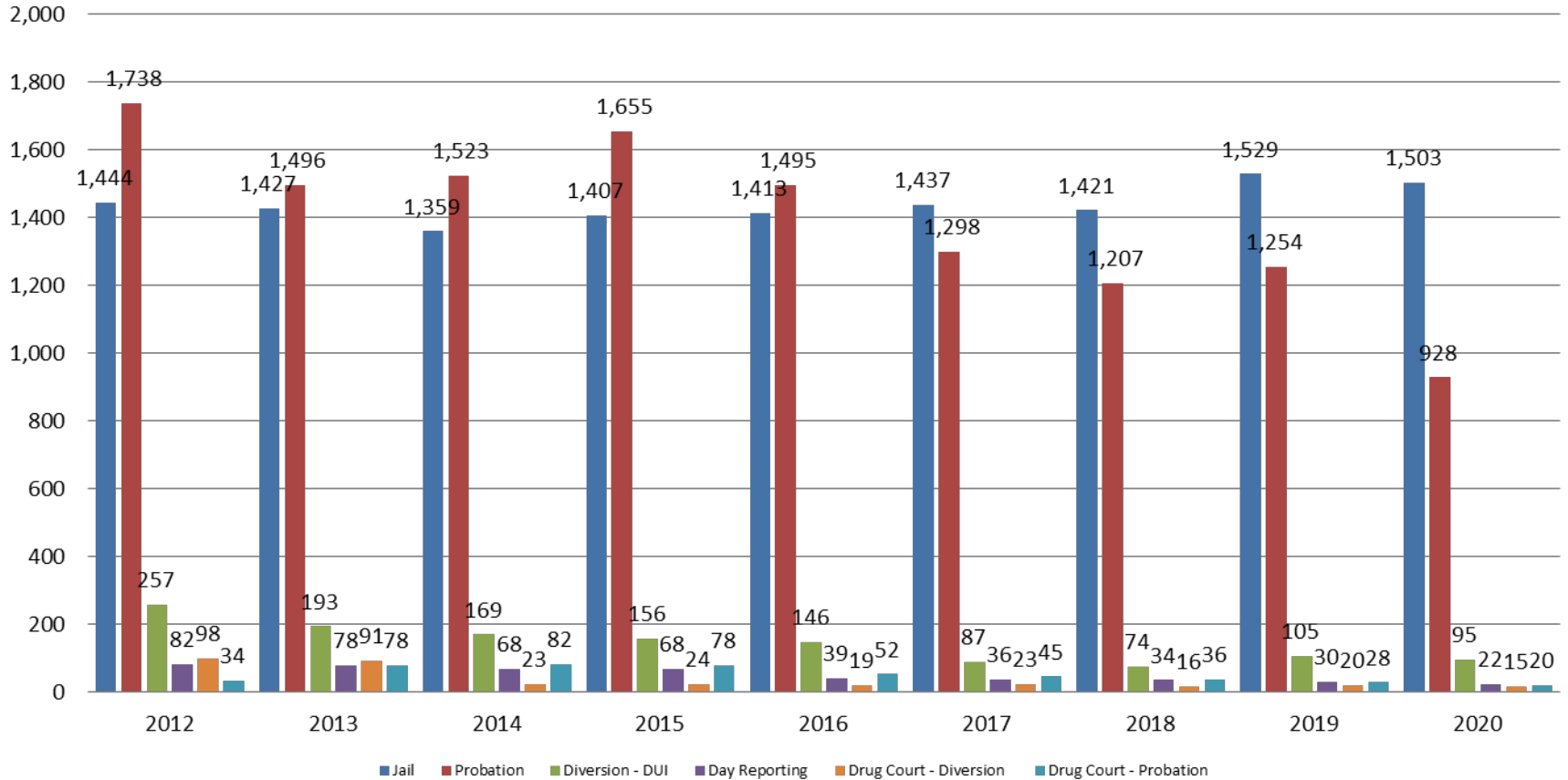
## Total Annual ADP: 2012 - present



Jail includes individuals in booking, detention, work release and out-of county (combined)  
 (data obtained from detention facility, DA's Office, & District Court)

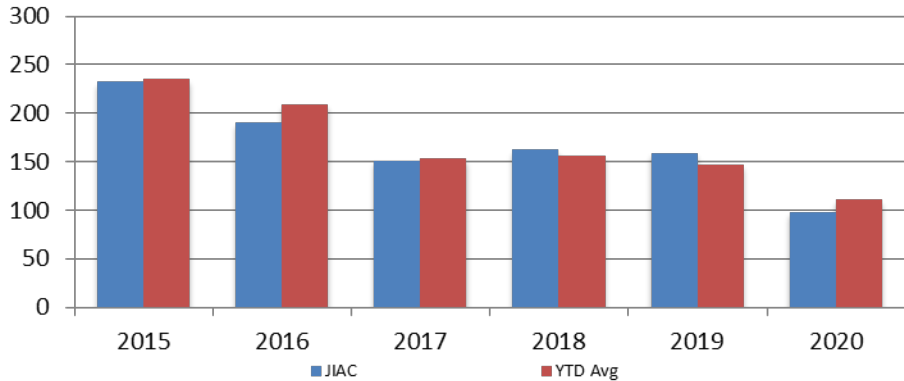
# Correlation: Total & City of Wichita / Municipal Court Programs

## Total Annual ADP: 2012 - present



# Juvenile

**JIAC Intakes**  
December 2015 - present

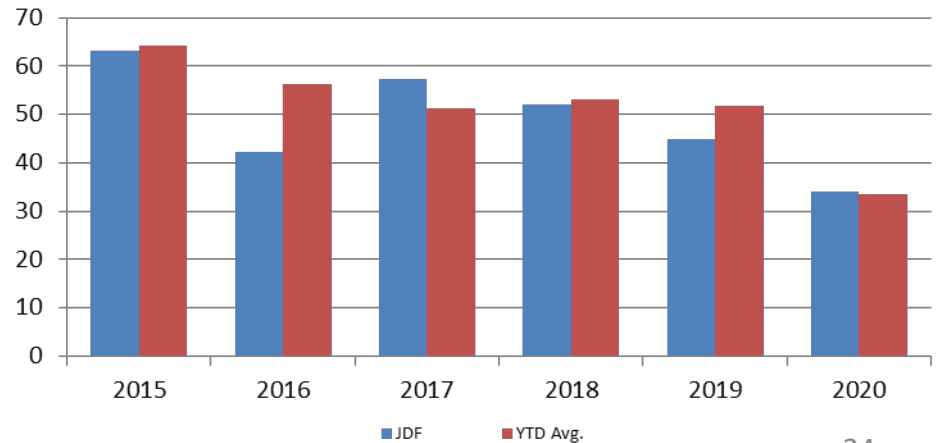


Year	December	December YTD Avg.
2015	232	235
2016	190	209
2017	151	153
2018	162	156
2019	159	147
2020	98	110

**Year**      **December**      **December YTD Avg.**

2015	63	64
2016	42	55
2017	57	52
2018	52	53
2019	45	51
2020	34	34

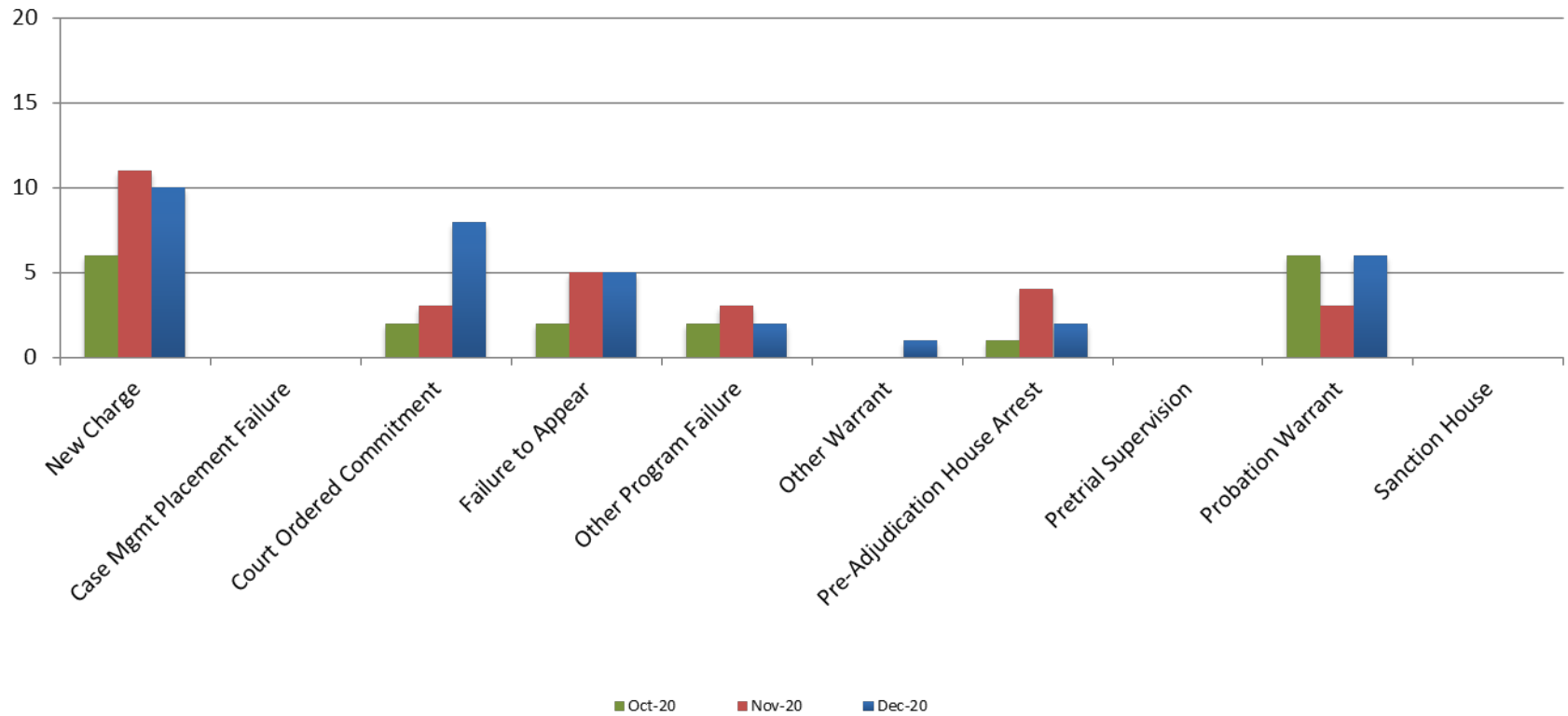
**JDF ADP**  
December 2015 - present







# Reason for JDF Admits





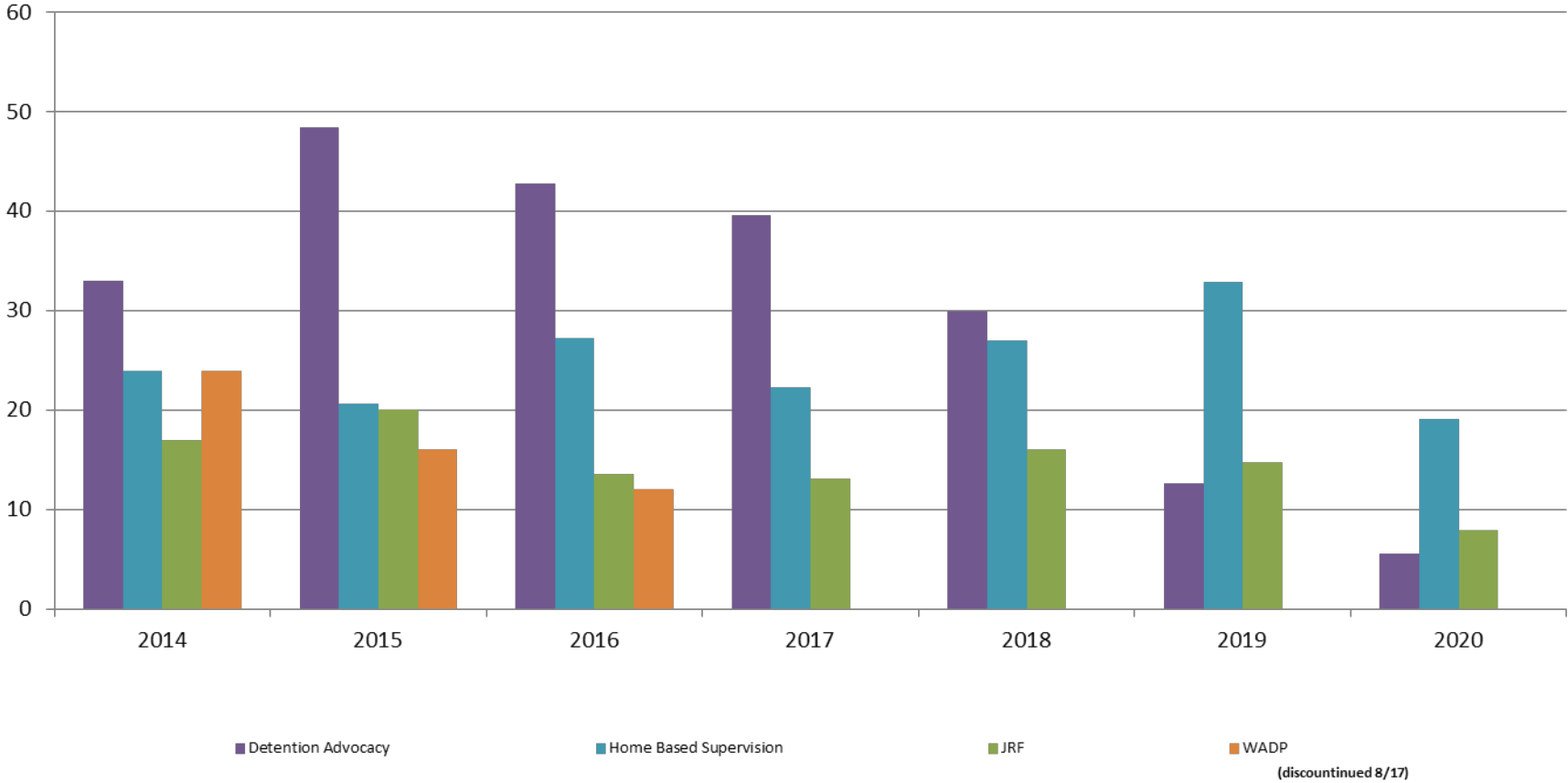
# Reason for JDF Admits

Reason	December 2019	December 2020
New Charges	12	10
Case Management Placement Failures	0	0
Court Ordered Commitment	8	8
Failure to Appear	6	5
Other Program Failure	1	2
Other Warrant	1	1
Pre-Adjudication House Arrest	0	2
Pretrial Supervision	0	0
Probation Warrant	14	6
Sanction House	1	0



# Juvenile Detention Alternatives

**ADP: December 2014 - present**



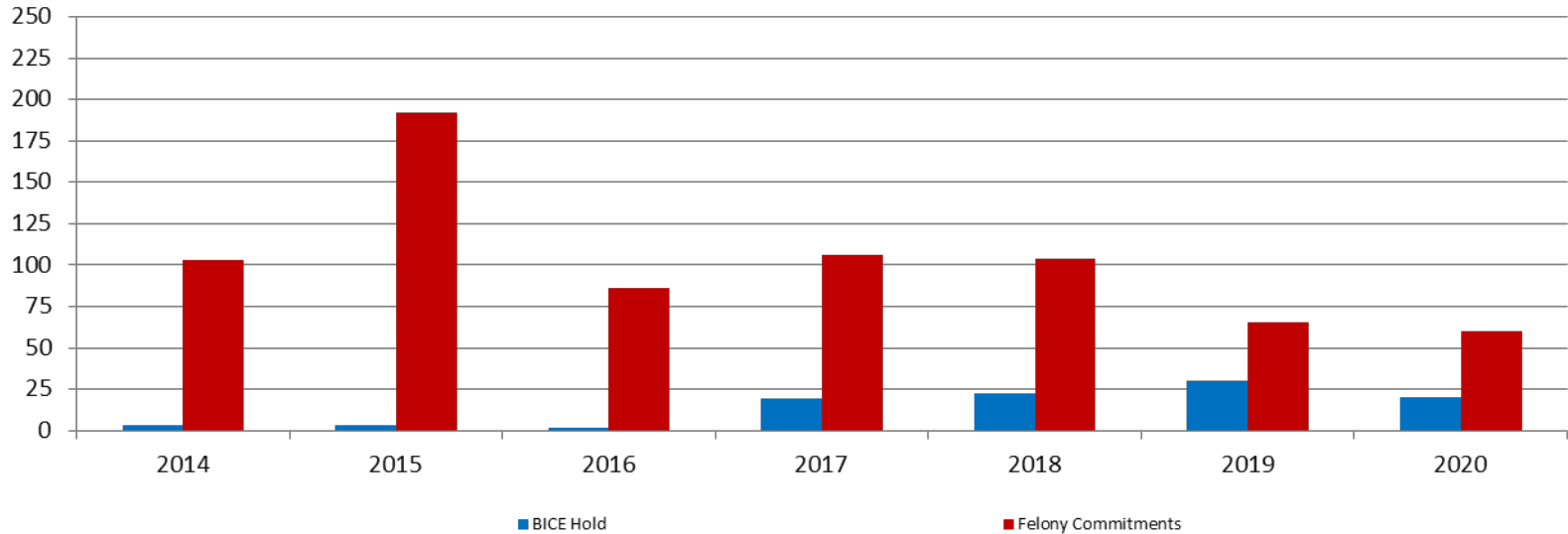
# Juvenile Detention Services

<b>December ADP</b>	<b>2017</b>	<b>2018</b>	<b>2019</b>	<b>2020</b>
Juvenile Detention Facility	57	52	45	34
Juvenile Residential Facility	13	16	15	8
Home Based Supervision	22	27	33	19
Detention Advocacy Case Management Services	40	30	13	6
Weekend Alternative Detention Program (total)	0	0	N/A	N/A

<b>December YTD AVERAGE</b>	<b>2017</b>	<b>2018</b>	<b>2019</b>	<b>2020</b>
Juvenile Detention Facility	52	53	51	34
Juvenile Residential Facility	15	14	14	15
Home Based Supervision	21	25	27	28
Detention Advocacy Case Management Services	38	32	19	8
Weekend Alternative Detention Program	11	0	N/A	N/A

# Monthly Jail Snapshot: December 2020

Snapshots December 2014 - present



<b>BICE Hold</b>	<b>2014</b>	<b>2015</b>	<b>2016</b>	<b>2017</b>	<b>2018</b>	<b>2019</b>	<b>2020</b>
<b>December</b>	3	3	2	19	22	30	20

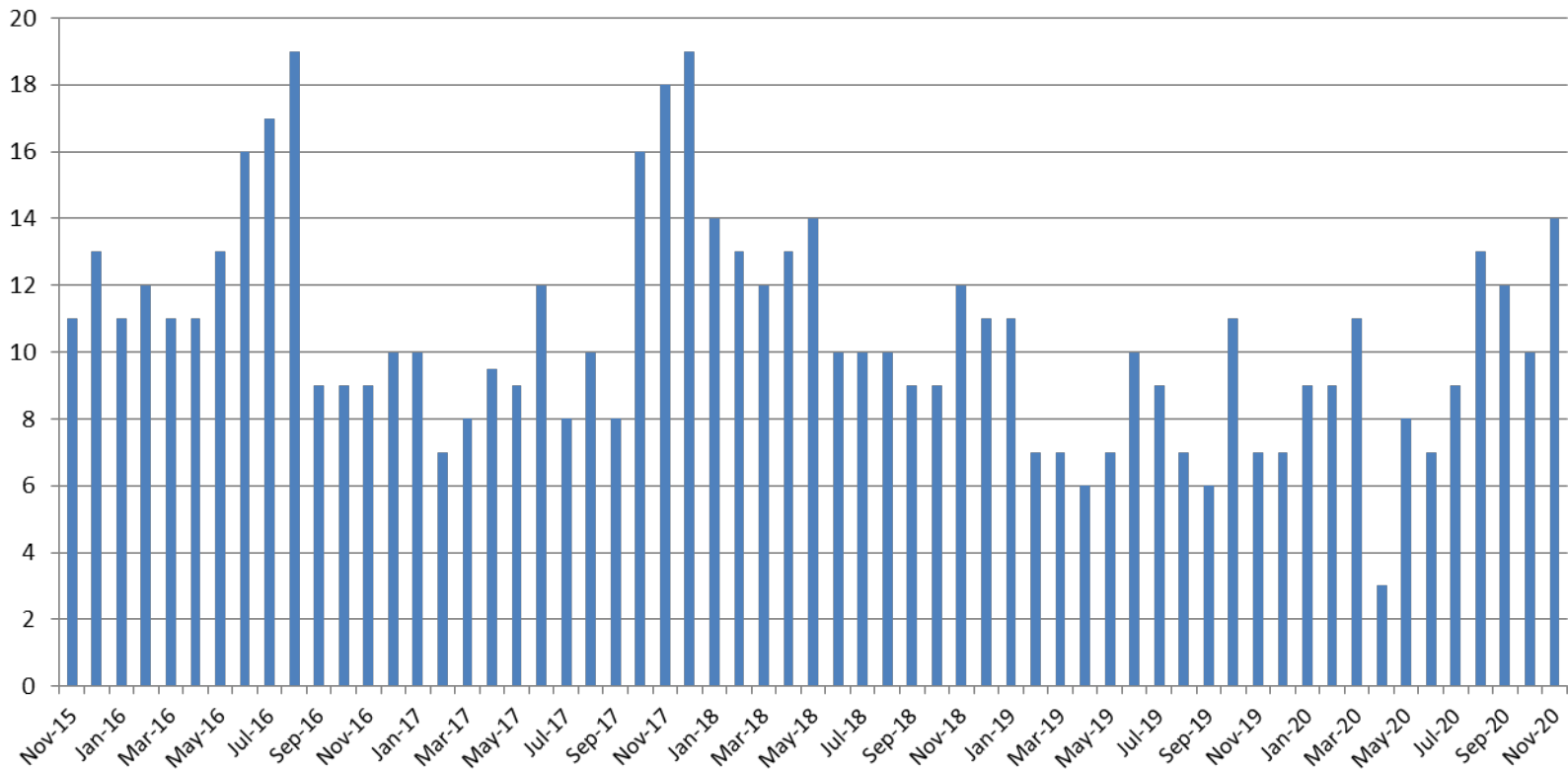
  

<b>Felony Commitments</b>	<b>2014</b>	<b>2015</b>	<b>2016</b>	<b>2017</b>	<b>2018</b>	<b>2019</b>	<b>2020</b>
<b>December</b>	103	192	86	106	104	65	60



# Journal Entry Completion (Average Days)

## November 2015 - present



November	2015	2016	2017	2018	2019	2020
Avg. Days	11	9	18	12	7	14
YTD Avg.	9	12	11	11.4	8	10

