

Criminal Justice Coordinating Council

Population Report & Program Trends

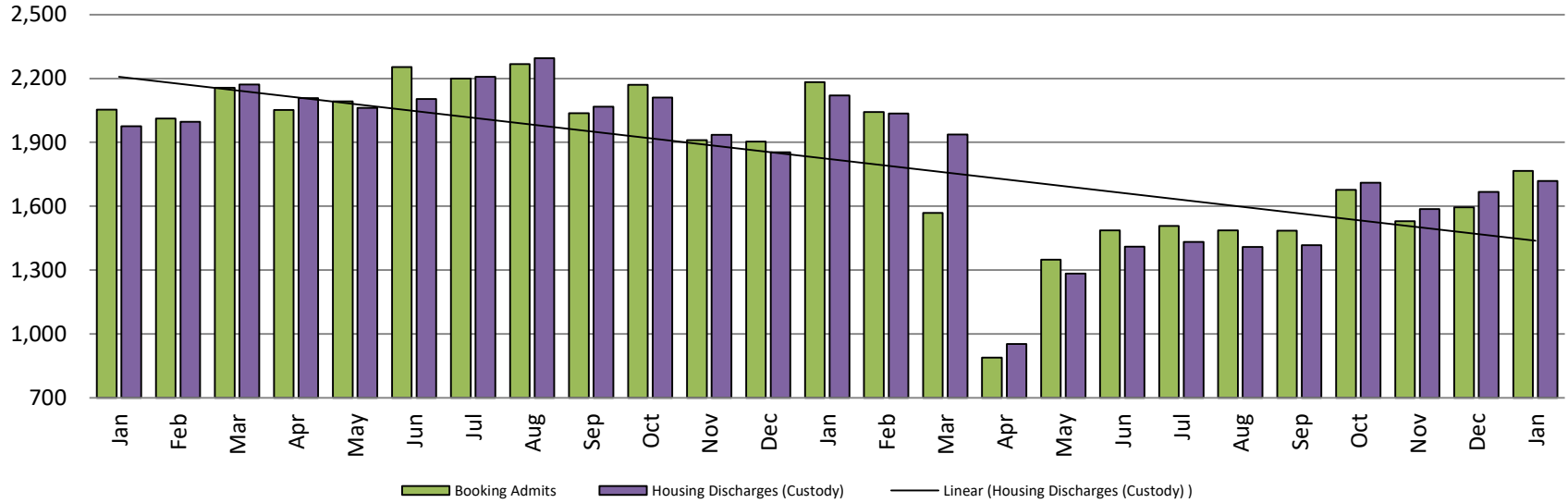
January 2021



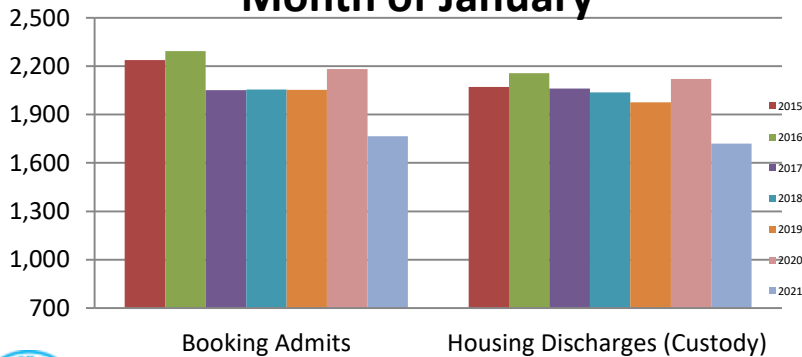
Sedgwick County...
working for you

Detention Facility

Booking Admits & Housing Discharges from Custody January 2019 - present



Bookings Year over Year: Month of January



Bookings January

2019: 2,054

2020: 2,183

2021: 1,766

Housing Discharges January

2019: 1,976

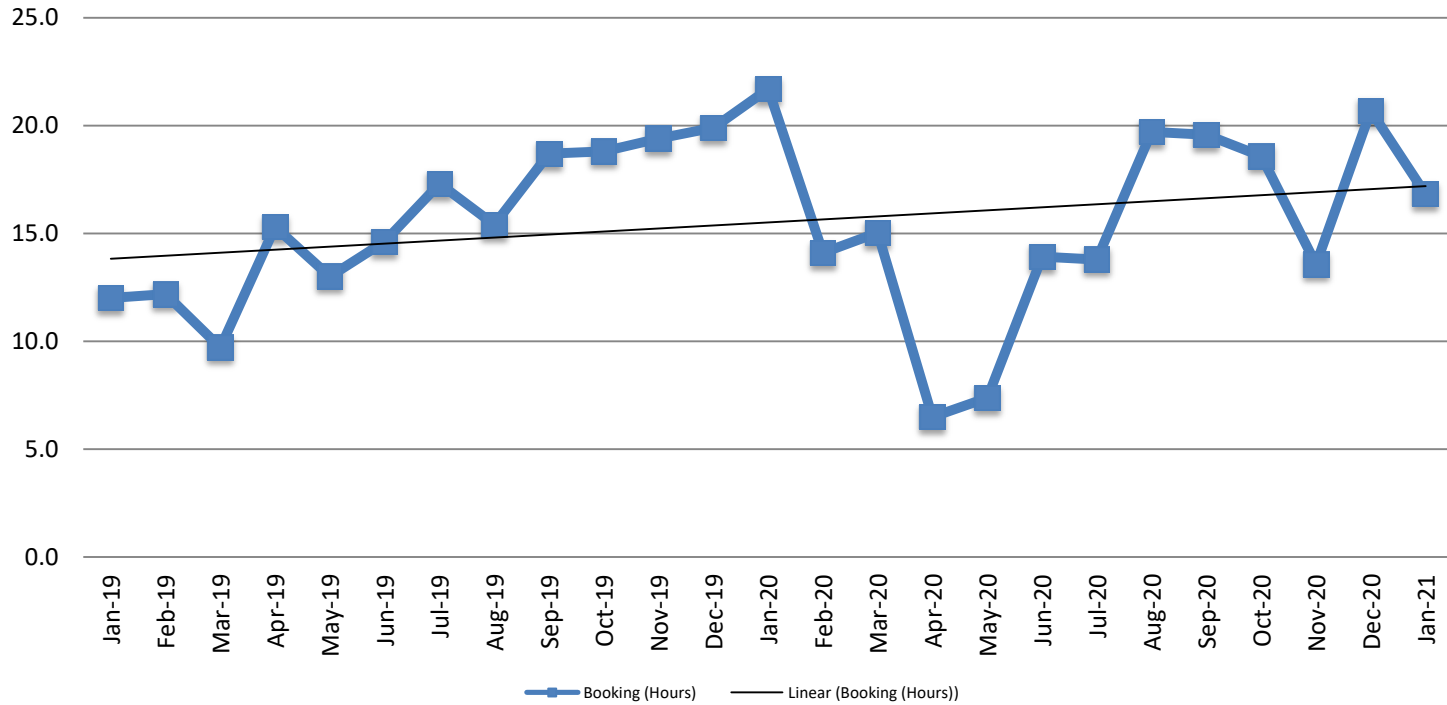
2020: 2,120

2021: 1,719



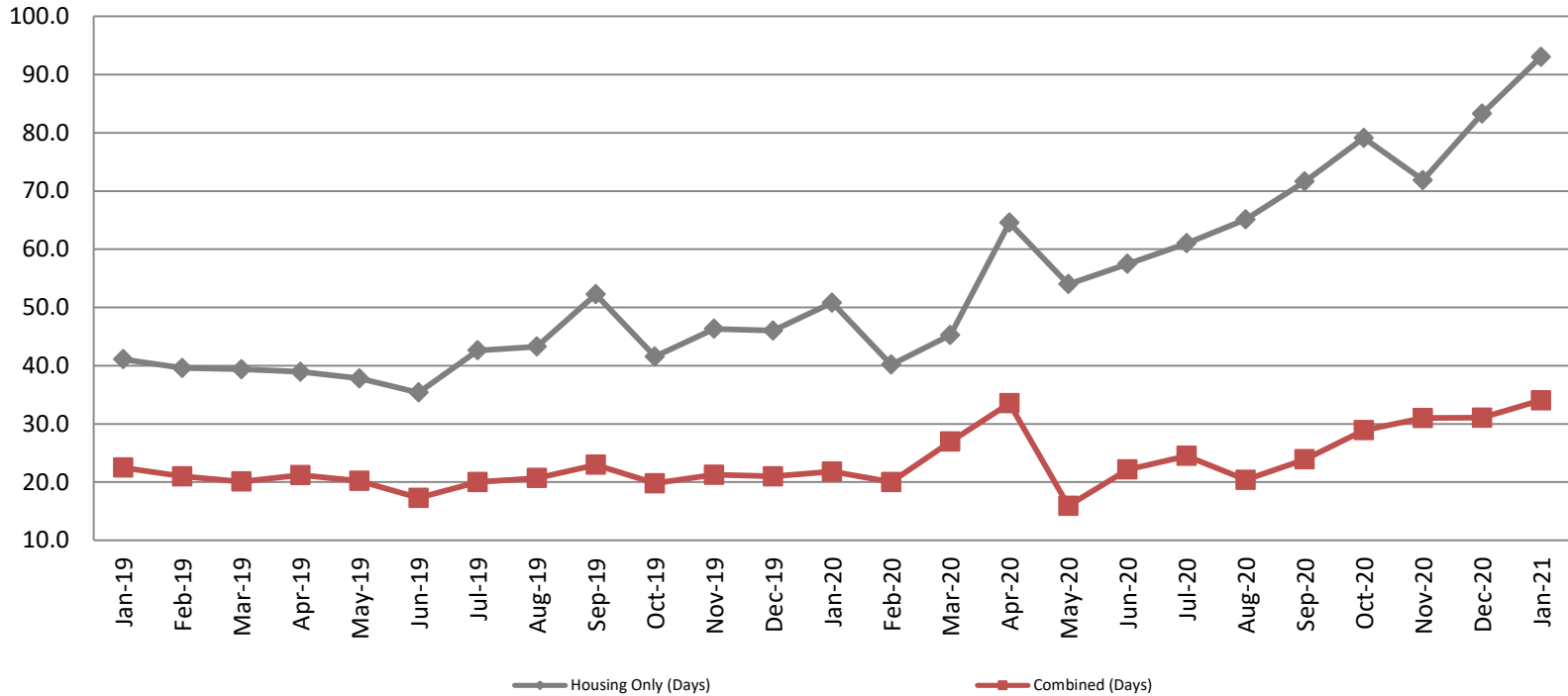
Sedgwick County...
working for you

Average Length of Stay: Booking (Hours) January 2019 - present



January	January YTD Average
2019: 12.0	2019: 12.0
2020: 21.7	2020: 21.7
2021: 16.8	2021: 16.8

Average Length of Stay: Housing & Combined (Days) January 2019 - present

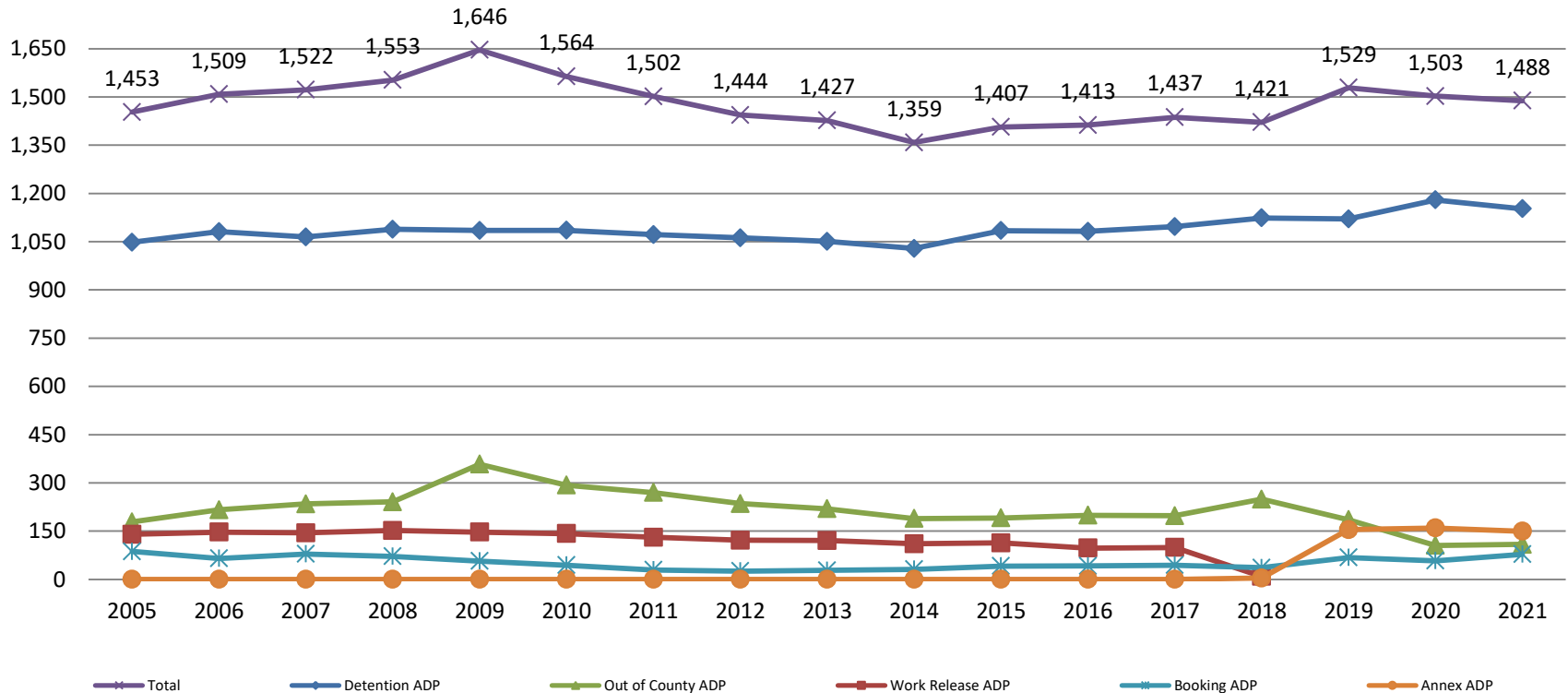


Month Year	Housing Only	Housing YTD AVG	Combined Days	Combined YTD AVG
January 2019	41.1	41.1	22.5	22.5
January 2020	50.8	50.8	21.8	21.8
January 2021	93.0	93.0	34.1	34.1

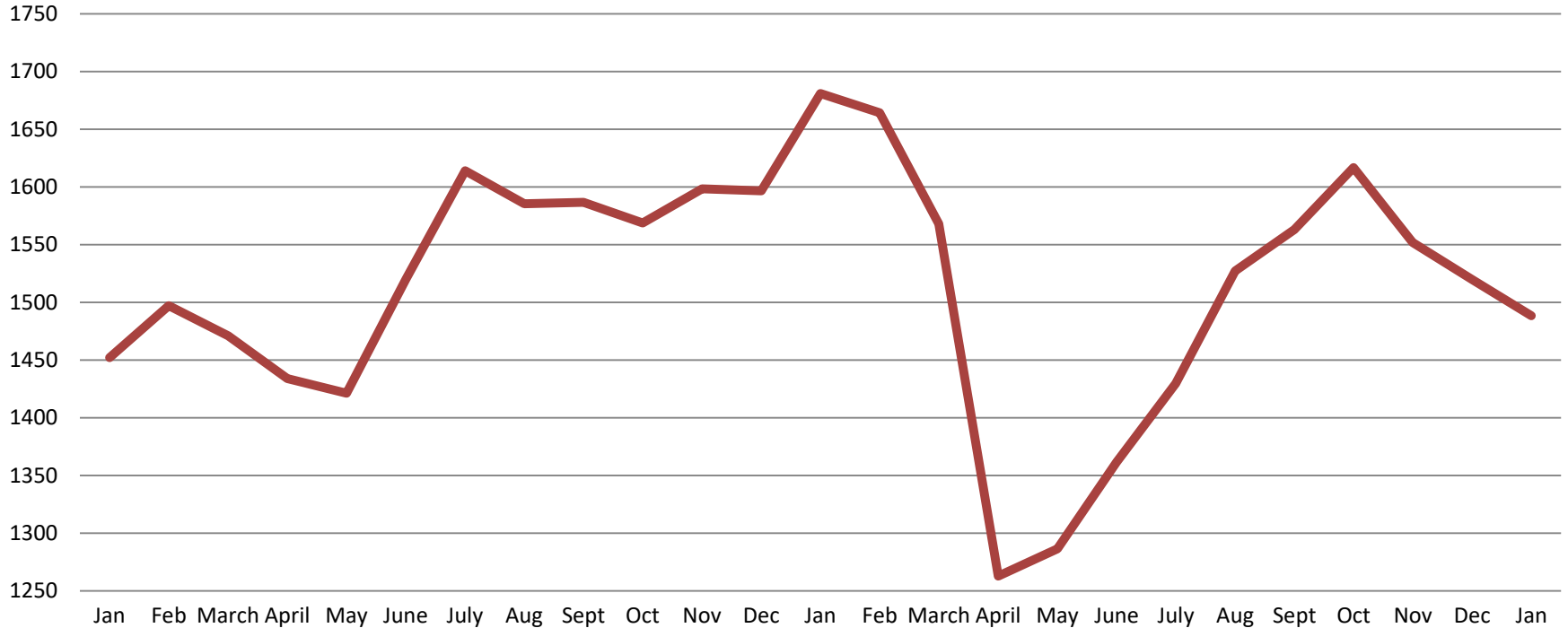


Jail: Annual Average Daily Population (ADP)

**TRENDS: Booking, Detention, Work Release, & Out of County Annual ADP:
2005 - present**

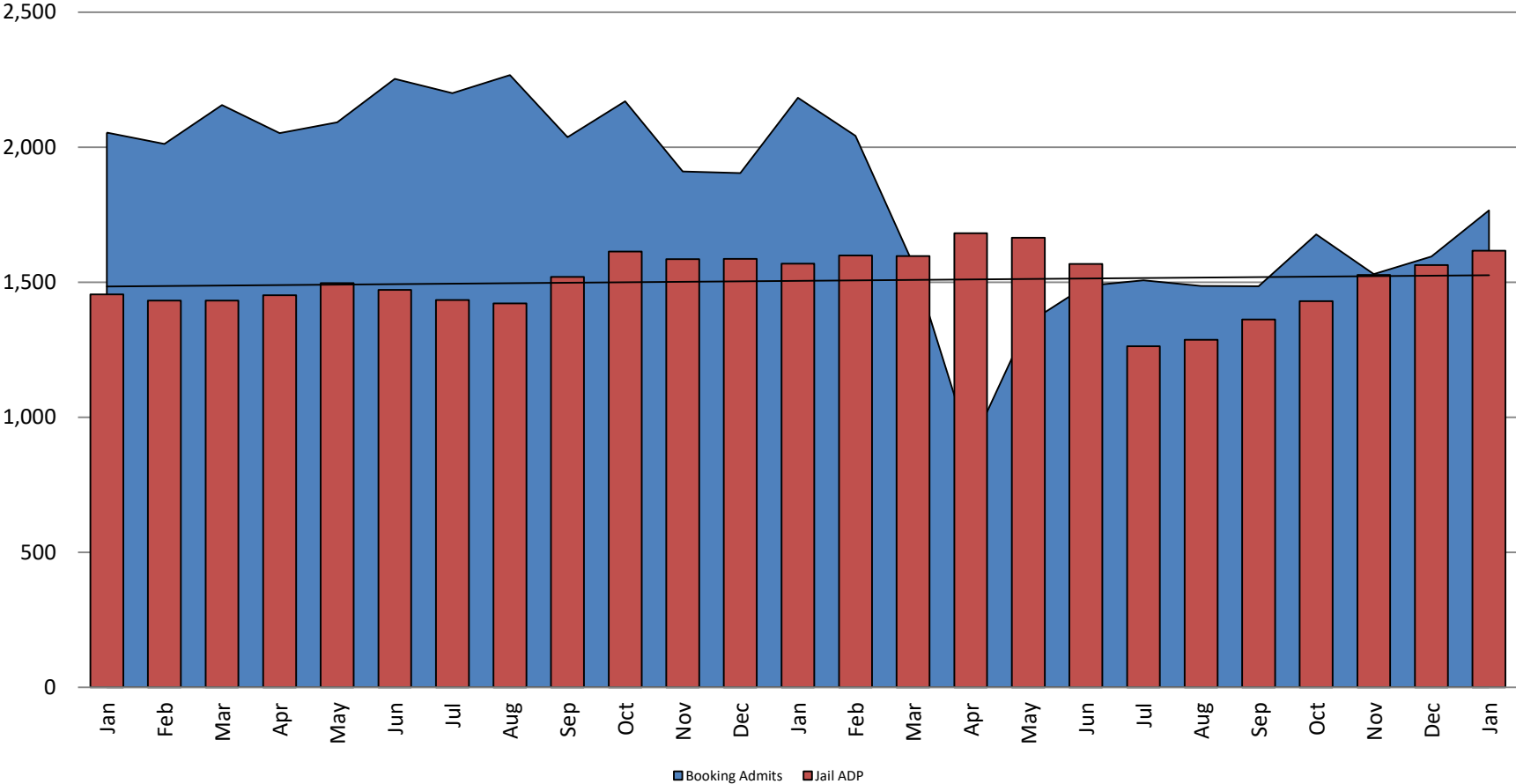


TOTAL MONTHLY ADP: JAIL (Booking, Detention Facility, Annex, & Out of County) January 2019 - present



January 2019	January 2020	January 2021
1,452	1,681	1,488

Booking Admits & Total Monthly ADP (Jail): January 2019 - present

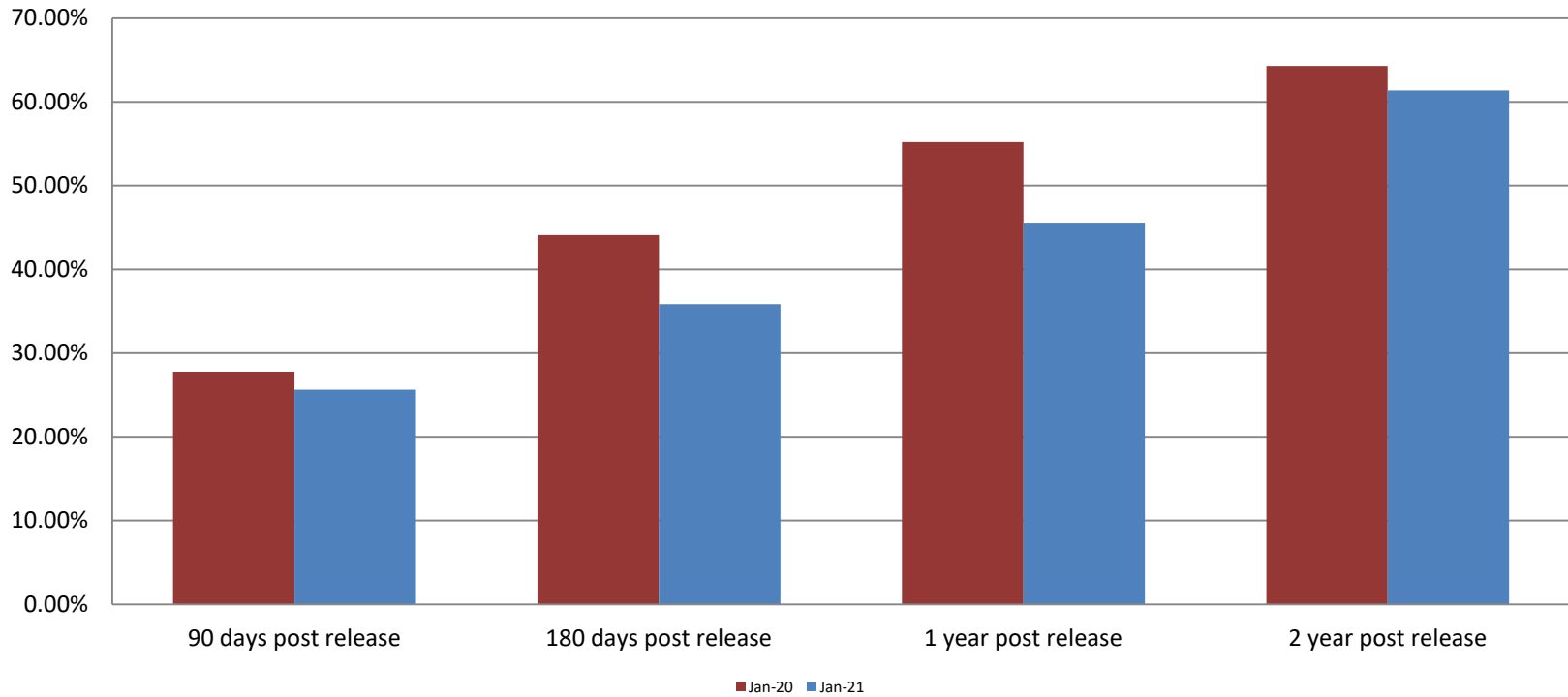


■ Booking Admits ■ Jail ADP



Jail includes individuals in booking, detention, work release and out-of county (combined)
(data obtained from detention facility)

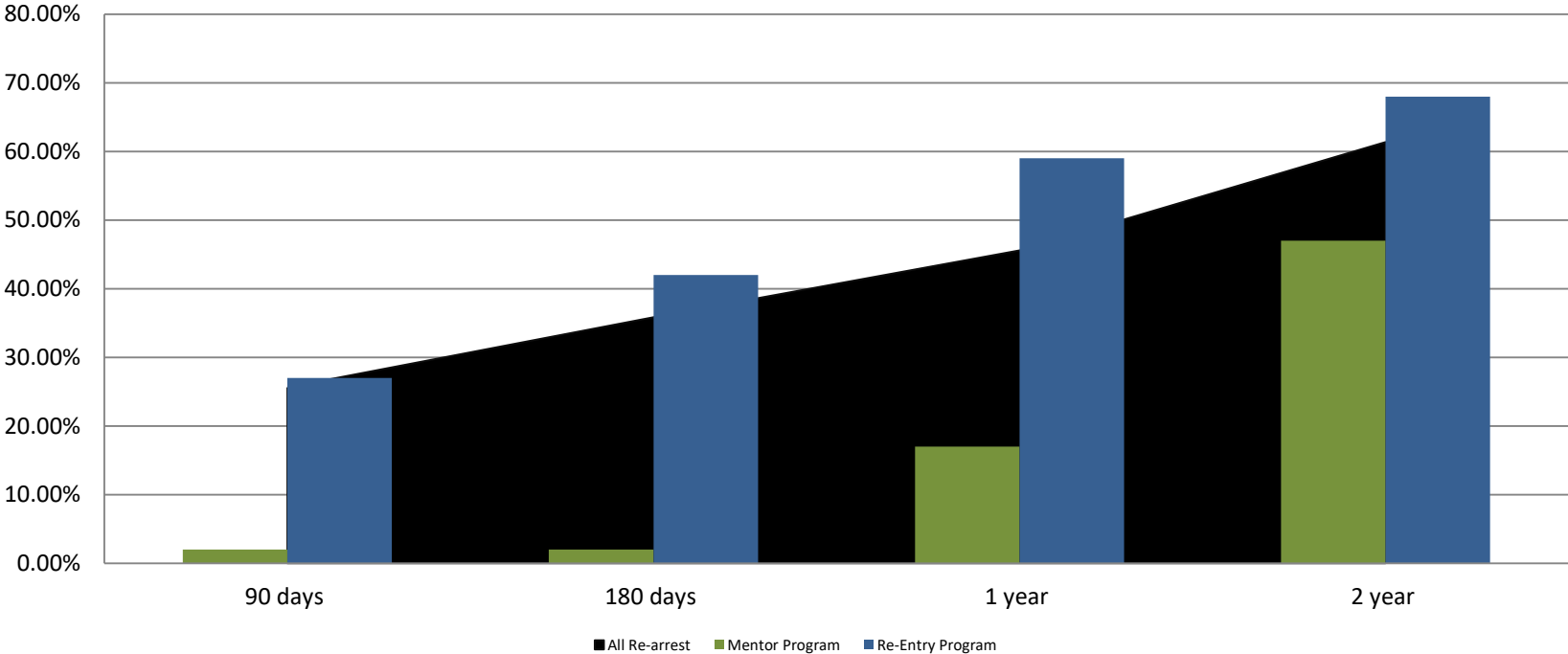
Percent of released inmates rearrested January



Month Year	90 Days	180 Days	1 Year	2 Years
January 2020	27.78%	44.09%	55.19%	64.29%
January 2021	25.63%	35.85%	45.59%	61.37%

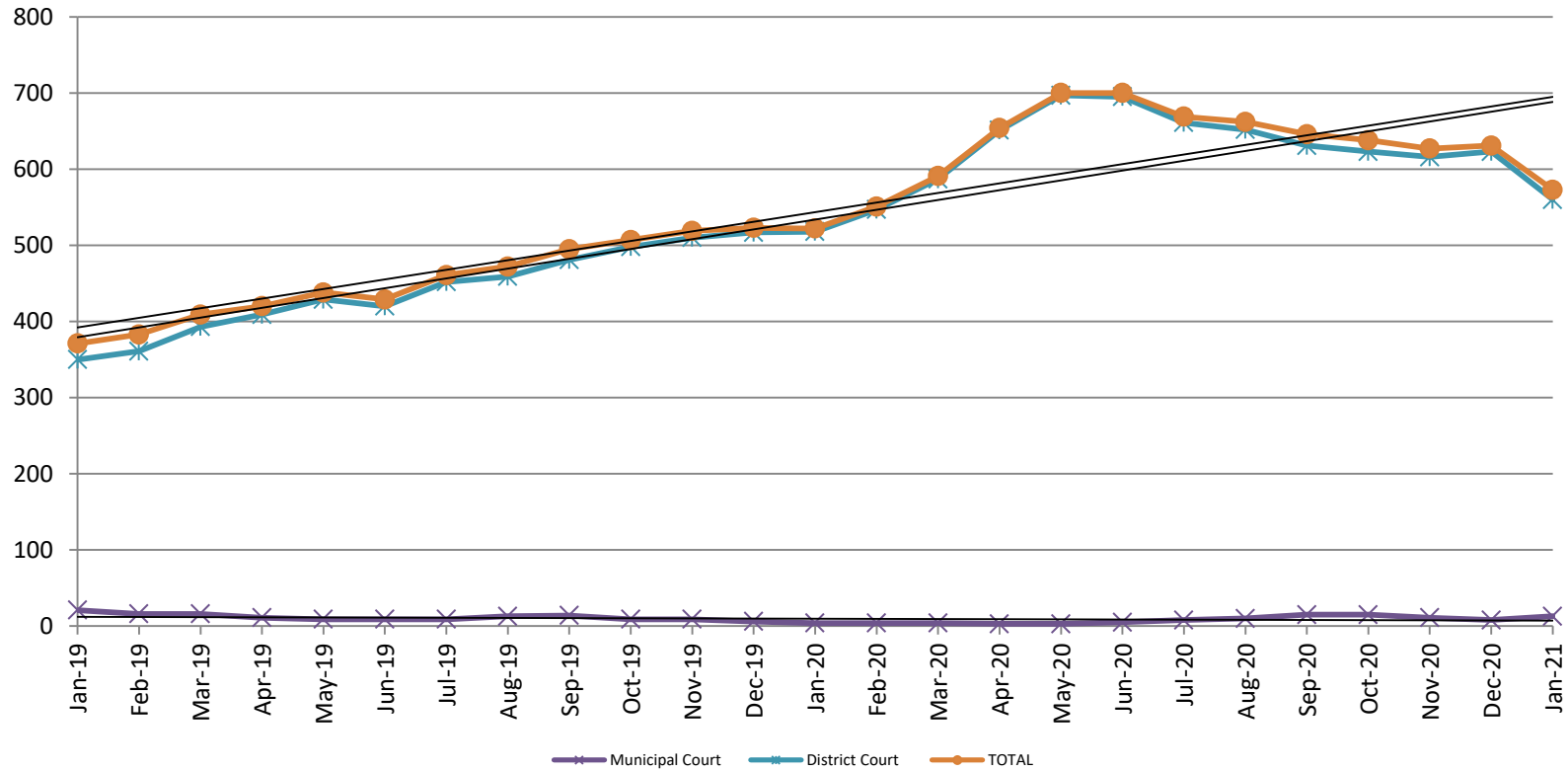


Recidivism by Programs January 2021



January 2021	90 Days	180 Days	1 year	2 years
All Re-arrests	25.63%	35.85%	45.59%	61.37%
Mentor Program	2%	2%	17%	47%
Re-Entry Program	27%	42%	59%	68%

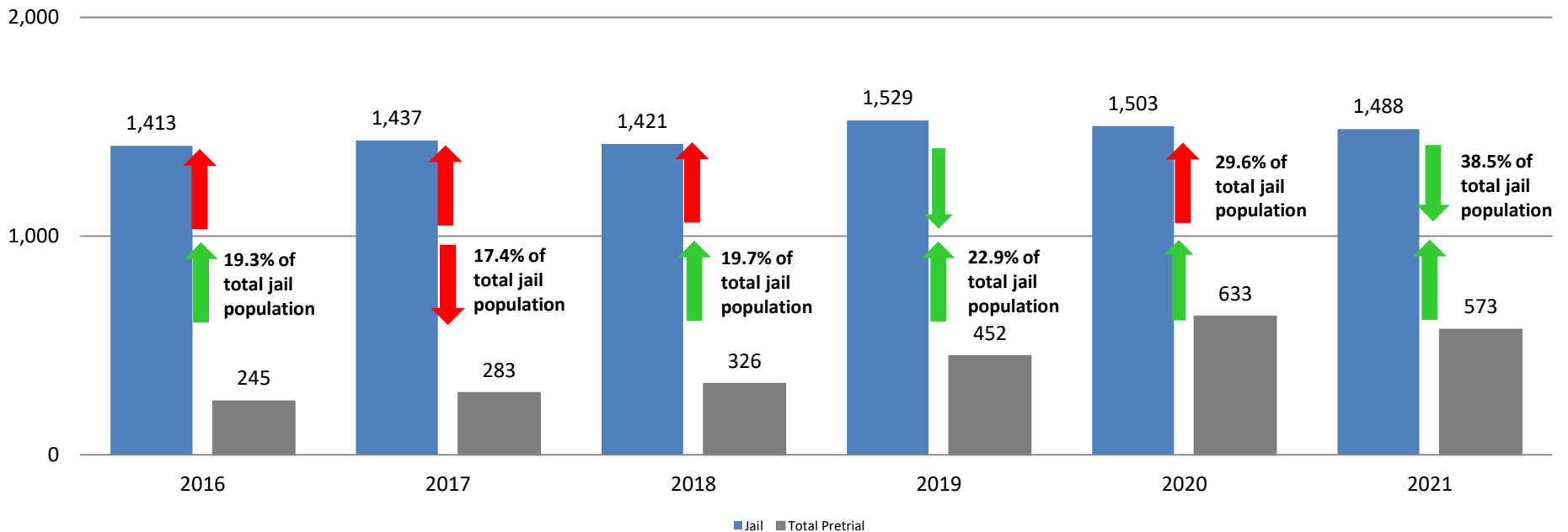
Pretrial Services Program (PSP) Monthly ADP: January 2019 - present



January	2019 ADP	2020 ADP	2021 ADP	2019 YTD Avg.	2020 YTD Avg.	2021 YTD Avg.
Muni. Court	21	4	13	21	4	13
Dist. Court	350	518	560	350	518	560
Total	371	522	573	371	522	573

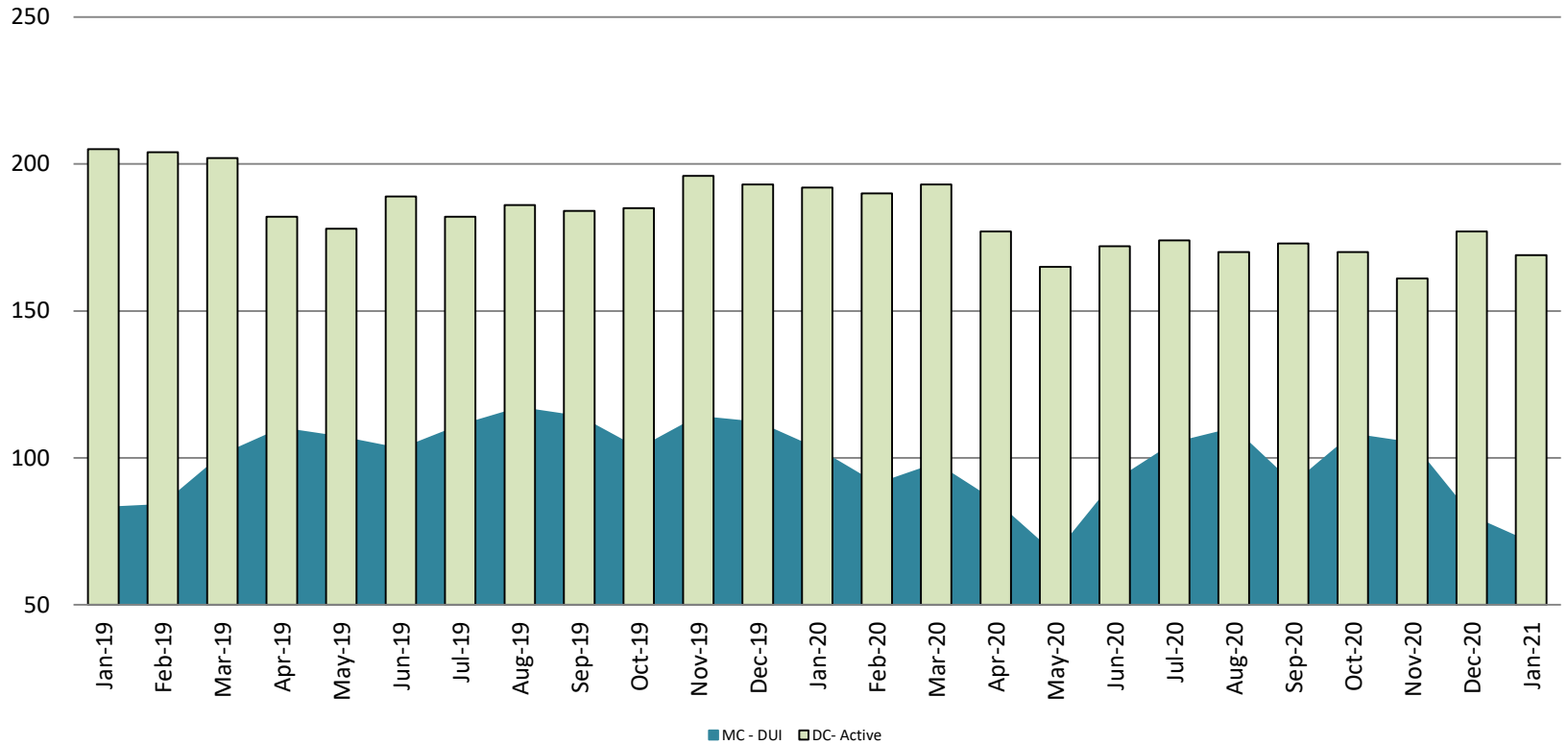
Correlation: Total & PSP

Total Annual ADP: 2016 - present



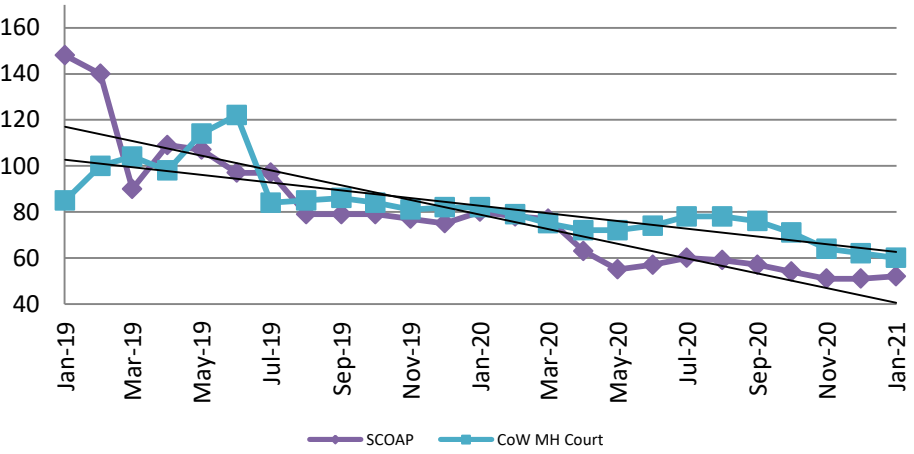
Diversion - Active Caseload

January 2019 - present

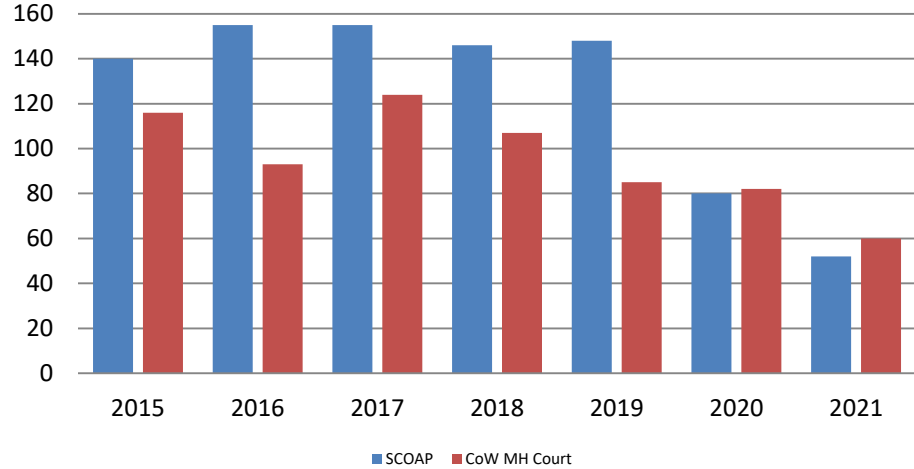


January	2019	2020	2021	2019 YTD Avg.	2020 YTD Avg.	2021 YTD Avg.
Muni. Court- DUI	83	103	71	83	103	71
Dist. Court- Active	205	192	169	205	192	169

Mental Health - ADP January 2019 - present

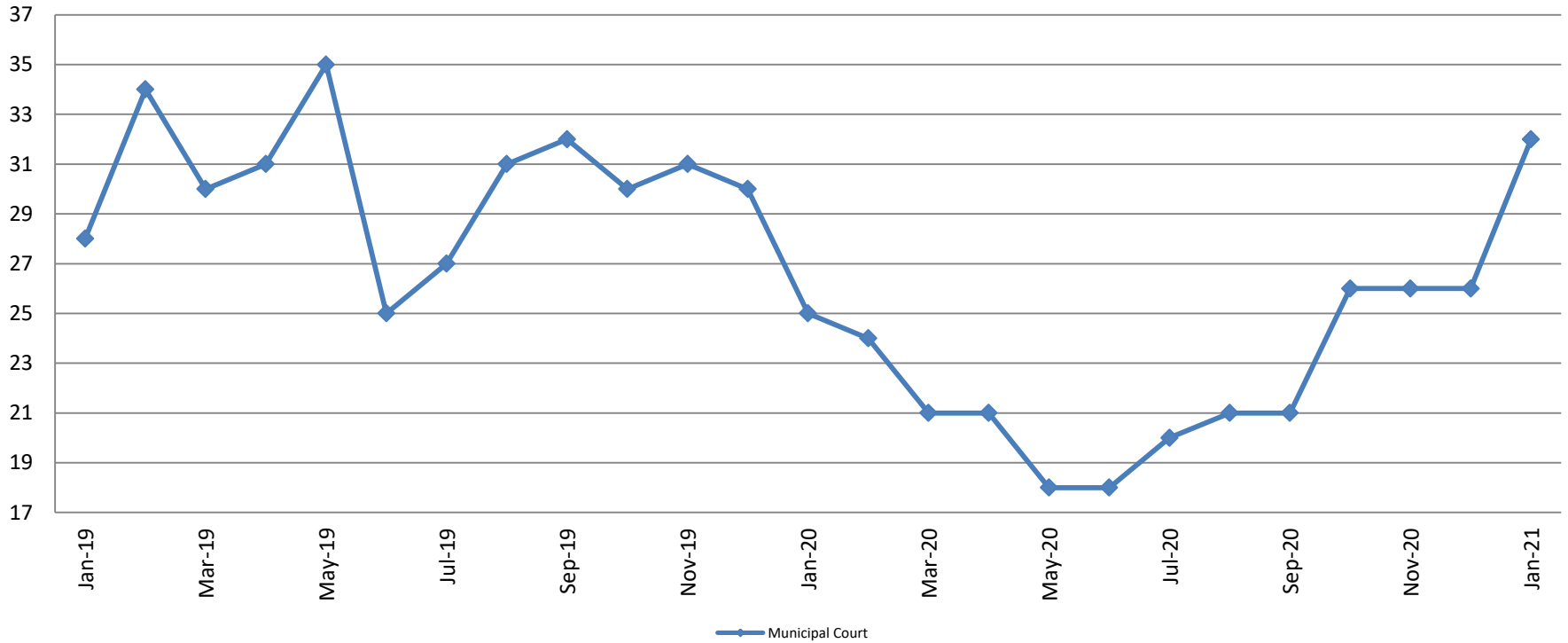


Mental Health ADP Year over Year - January



January	2019 ADP	2020 ADP	2021 ADP	2019 YTD Avg.	2020 YTD Avg.	2021 YTD Avg.
SCOAP	148	80	52	148	80	52
MH Court	85	82	60	85	82	60

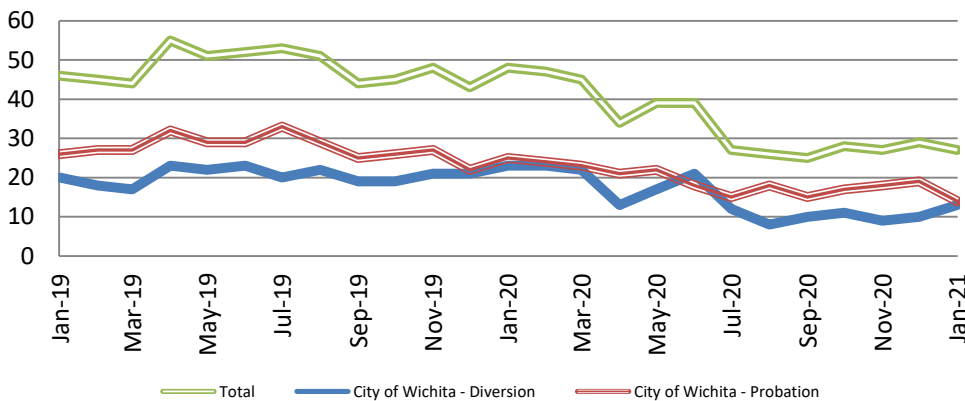
Day Reporting - Active Caseload January 2019 - present



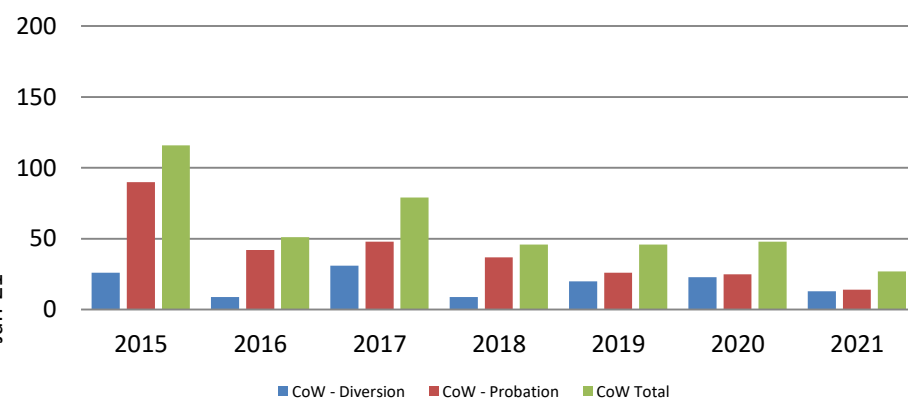
January	2016	2017	2018	2019	2020	2021
Muni. Court	47	35	40	28	25	32
Muni. Court YTD Avg.	47	35	40	28	25	32



Drug Court - City of Wichita ADP: January 2019 - present



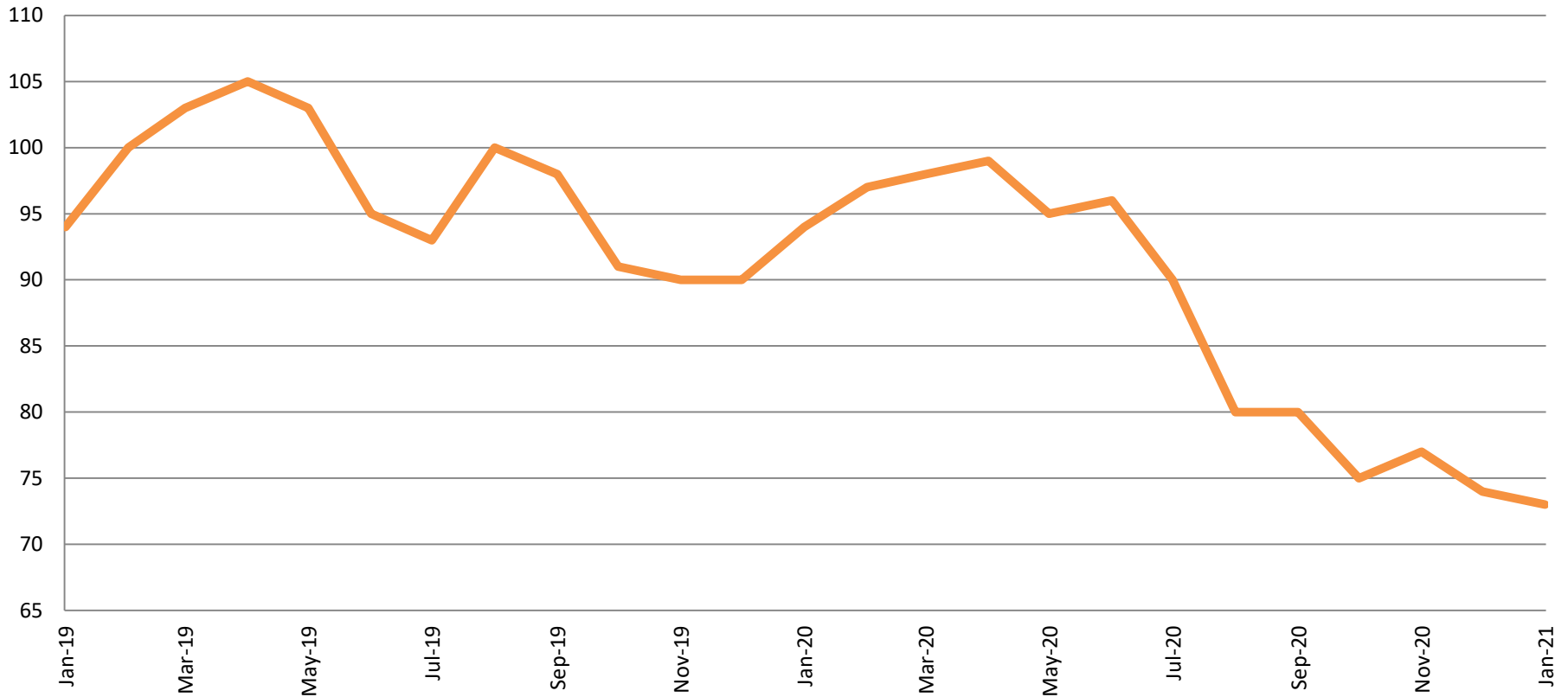
Drug Court- City of Wichita Year over Year - January



January	2019	2020	2021
Diversion	20	23	13
Probation	26	25	14
Total	46	48	27

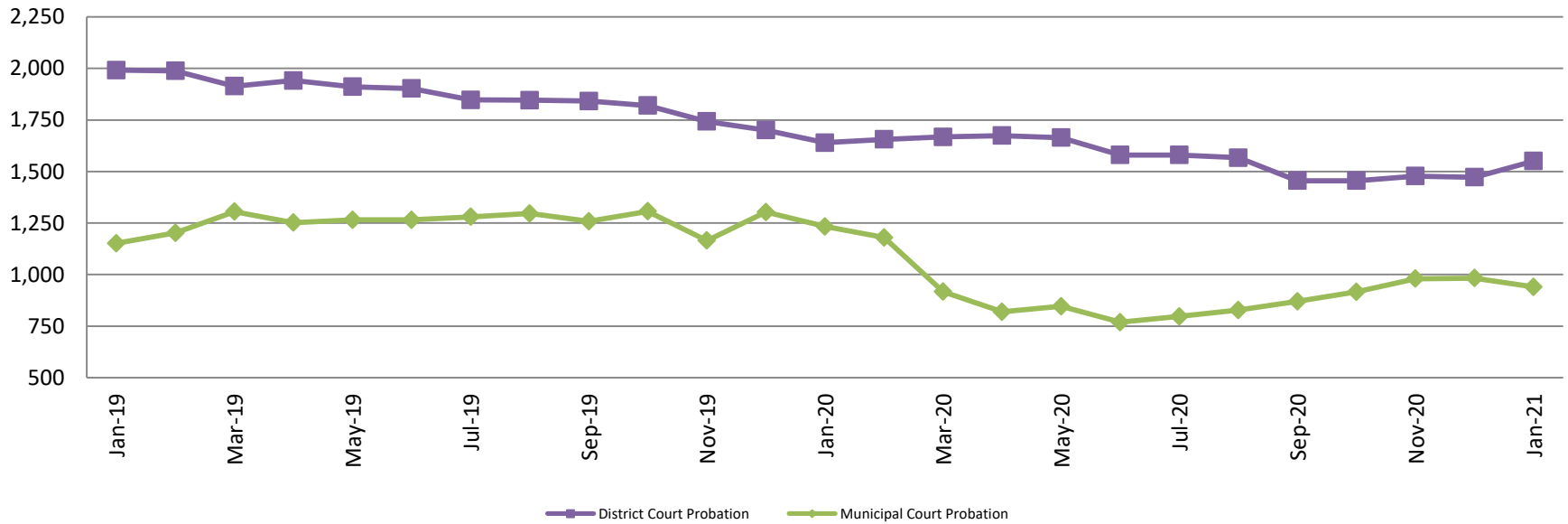


Drug Court - Sedgwick County ADP: January 2019 - present



	January	2019	2020	2021
Sedg. Co. ADP		94	94	73
YTD Avg.		94	94	73

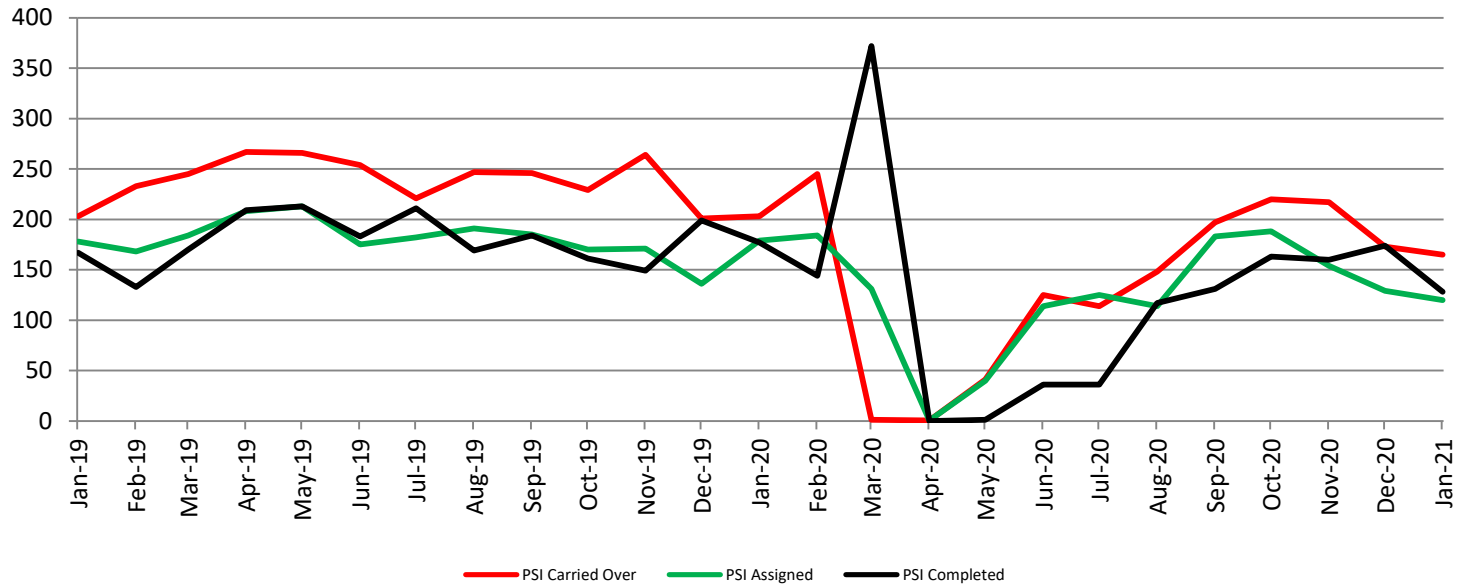
Probation - Active Caseloads January 2019 - present



January	2019	2020	2021	2019 YTD Avg.	2020 YTD Avg.	2021 YTD Avg.
Dist. Court Probation	1,992	1,640	1,551	1,992	1,640	1,551
Muni. Court Probation	1,152	1,233	940	1,152	1,233	940



District Court Probation: Pre-Sentence Investigation January 2019 - present

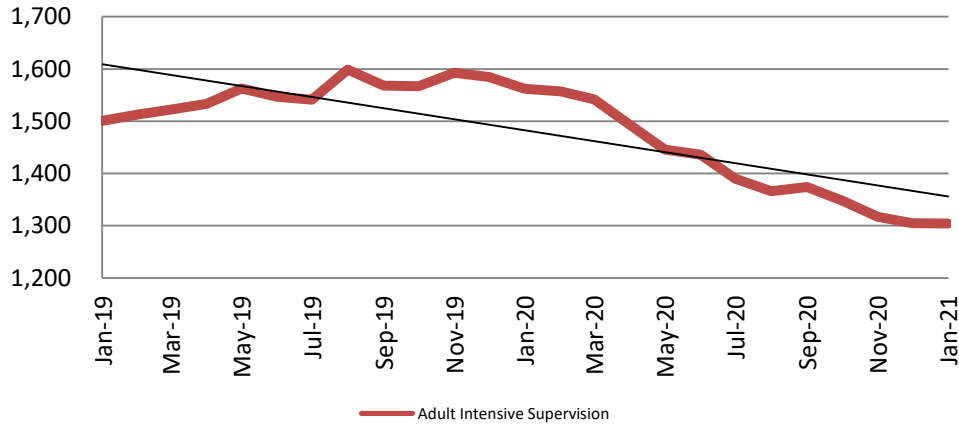


January	2019	2020	2021
Carried Over	203	203	165
Assigned	178	179	120
Completed	167	177	128



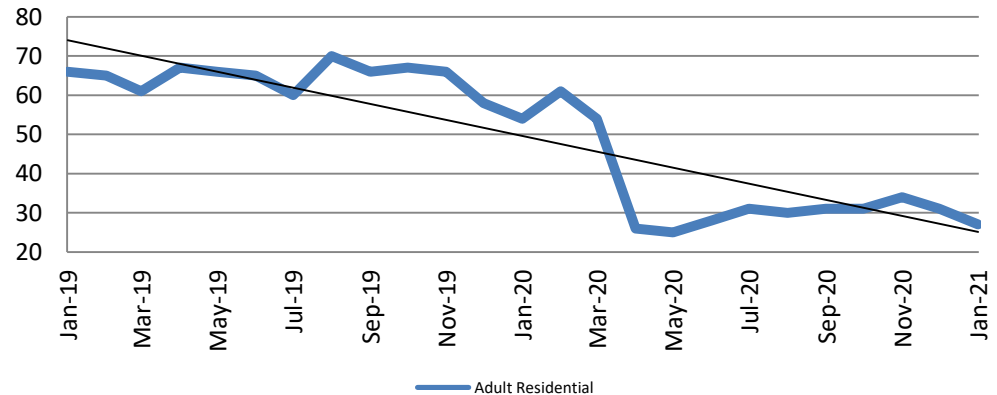
Community Corrections

**Adult Intensive Supervision Probation (AISP):
ADP January 2019 - present**



Year	January	January YTD Avg.
2019	1,501	1,501
2020	1,562	1,562
2021	1,304	1,304

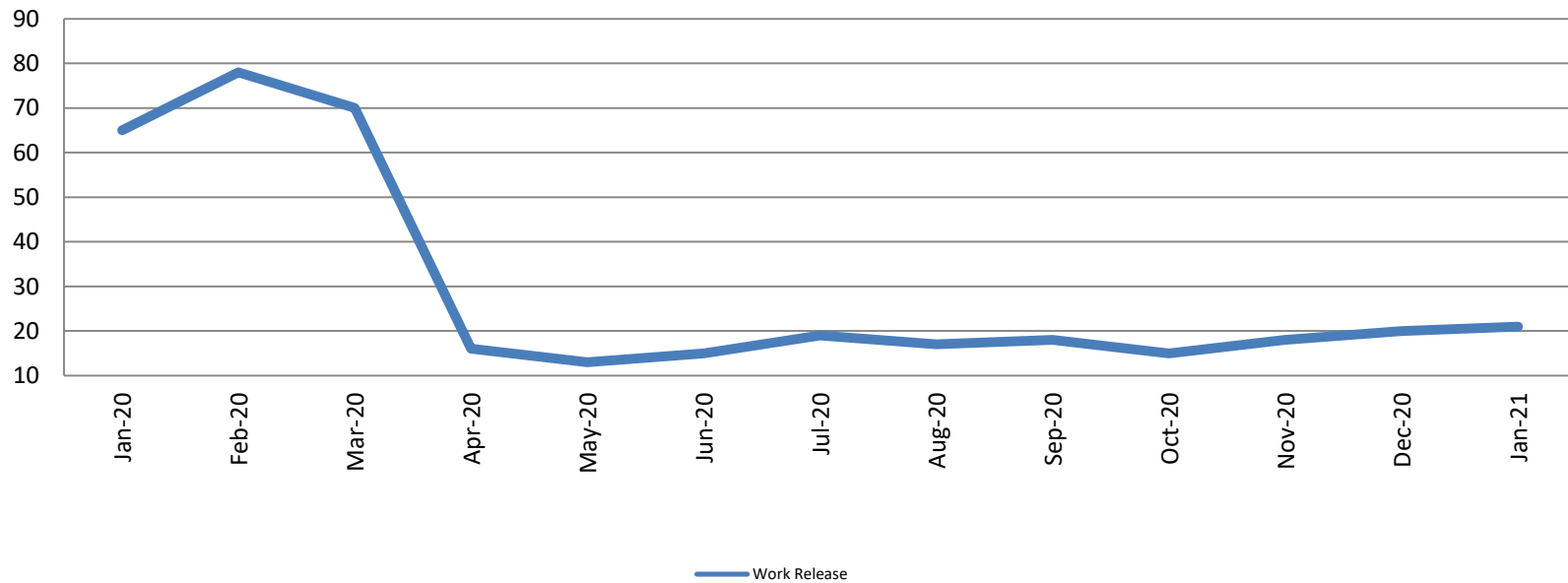
**Adult Residential: ADP
January 2019 - present**



Year	January	January YTD Avg.
2019	66	66
2020	54	54
2021	27	27

Community Corrections

Work Release: ADP January 2020 - present

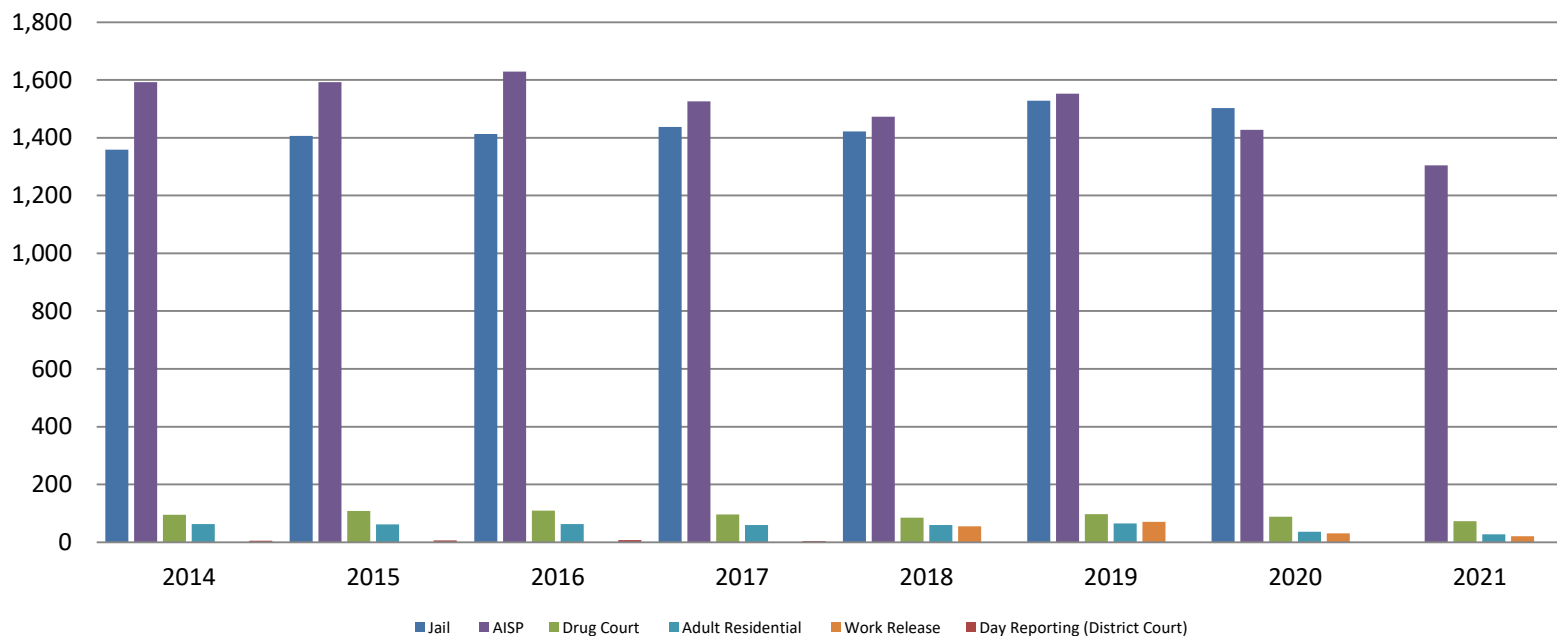


Month Year	Total	YTD Avg.
January 2020	65	65
January 2021	21	21



Correlation: Total & Sedgwick County Programs (Adult)

Total Annual ADP 2014 - present

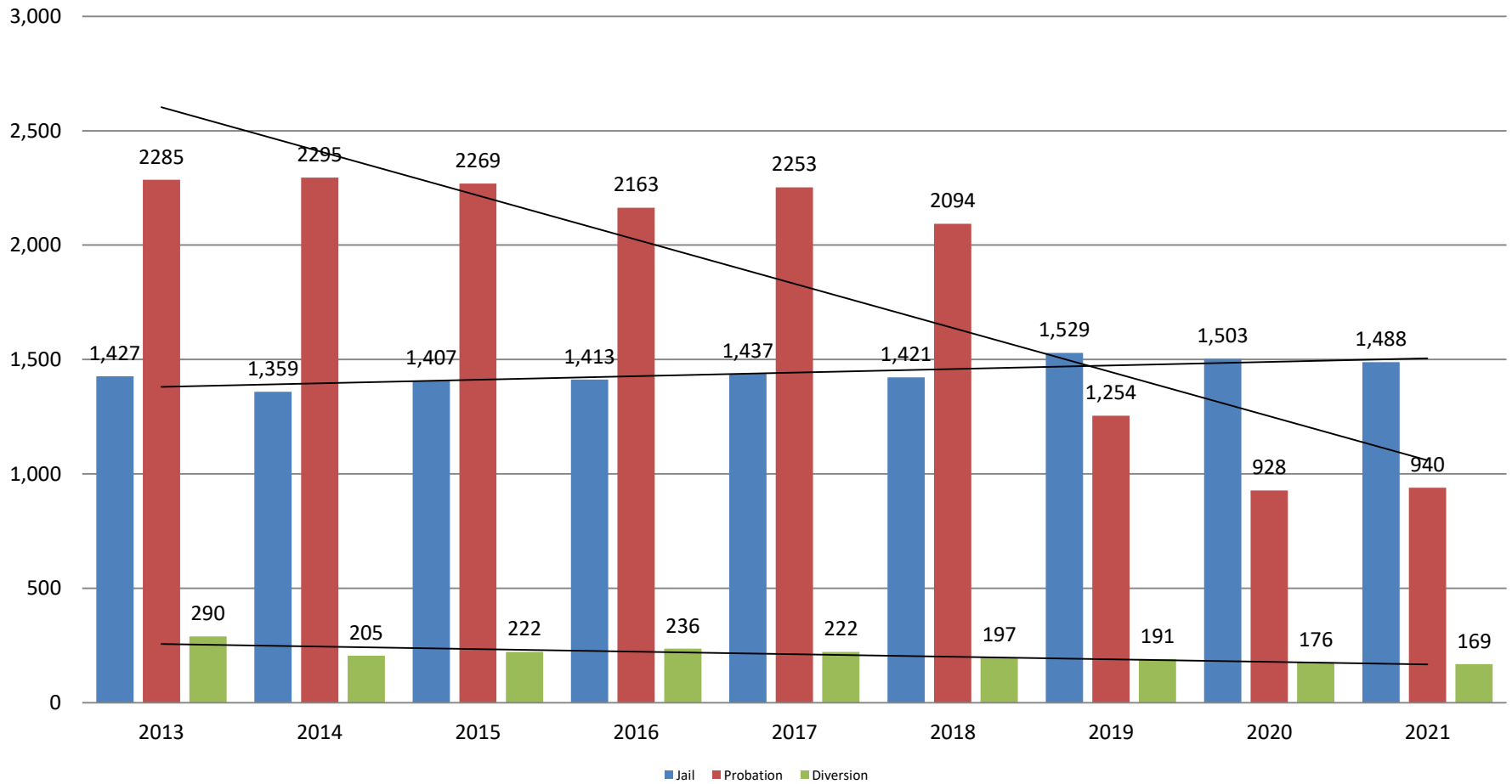


	2019	2020	2021
Jail	1,529	1,503	1,488
AISP	1,553	1,428	1,304
Drug Court	97	88	73
Adult Residential	65	36	27
Work Release	71	30	21
Day Reporting (DC)	0	0	0



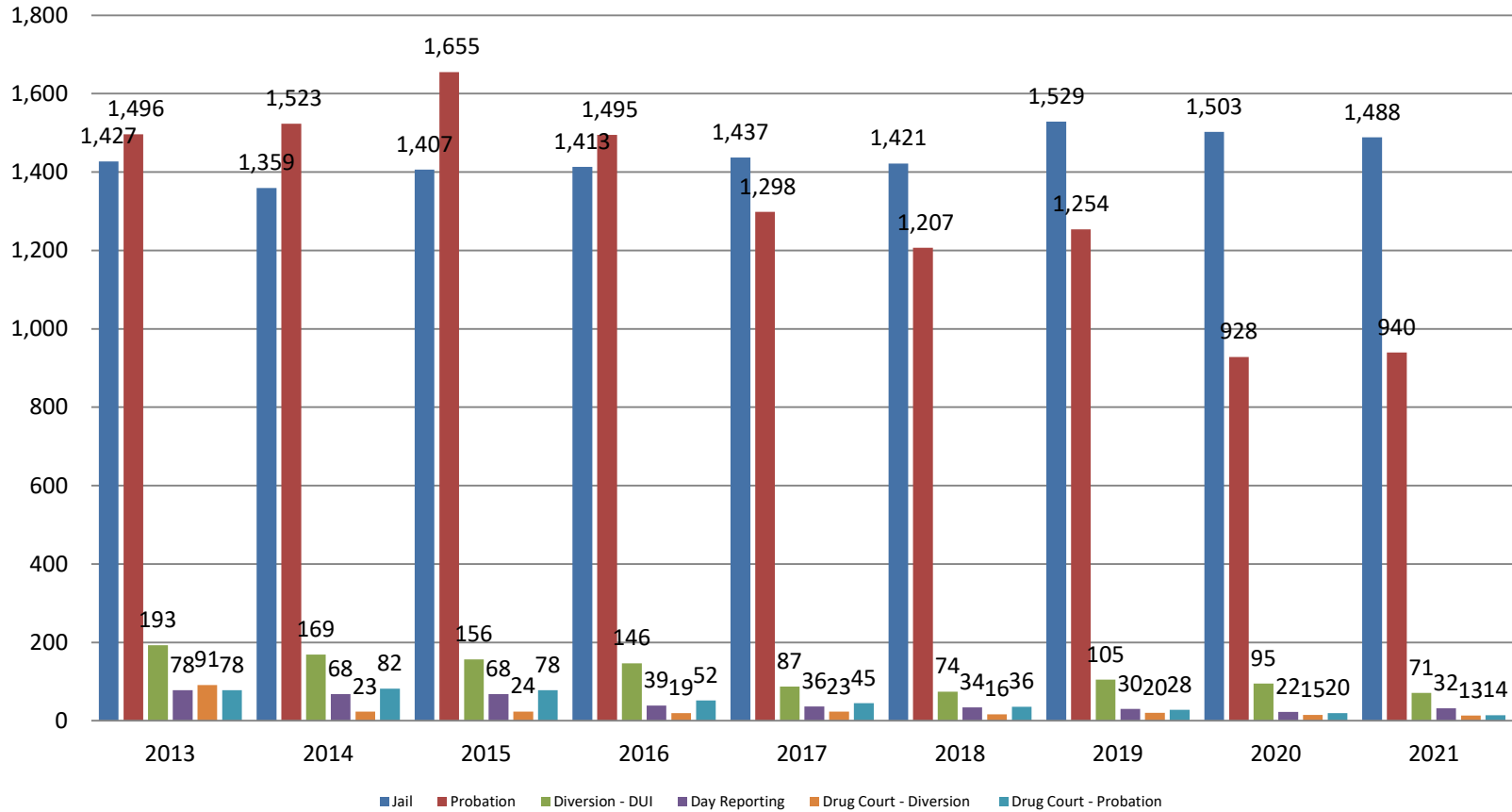
Correlation: Total & District Court Programs

Total Annual ADP: 2013 - present



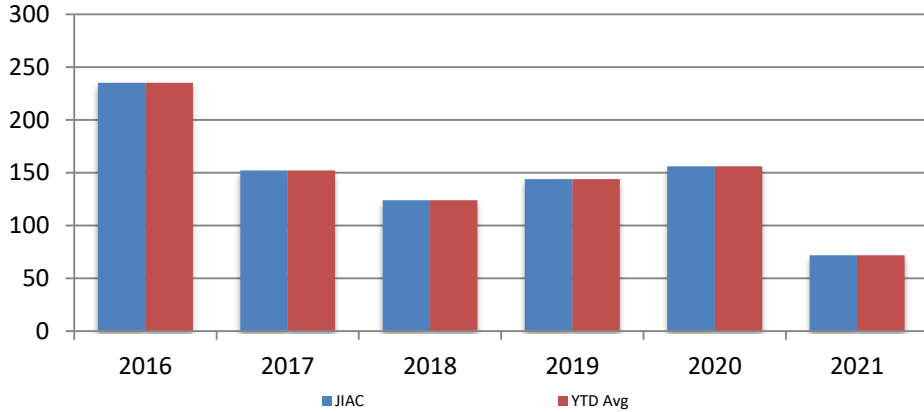
Correlation: Total & City of Wichita / Municipal Court Programs

Total Annual ADP: 2013 - present



Juvenile

JIAC Intakes
January 2016 - present

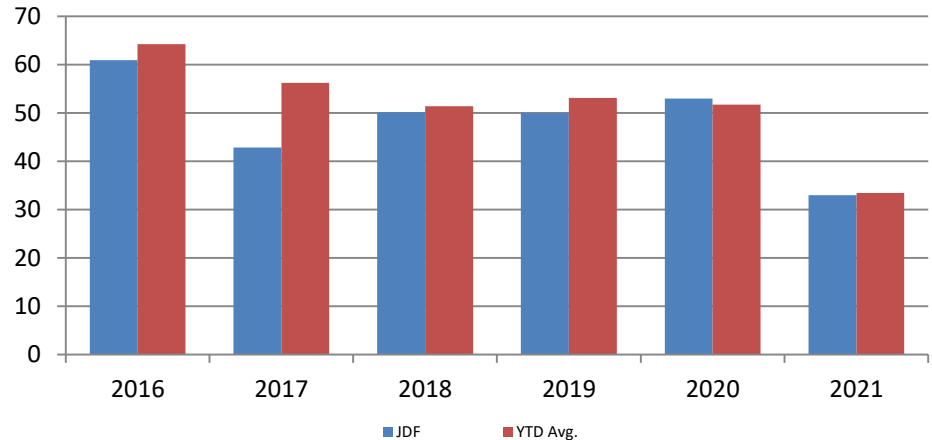


Year	January	January YTD Avg.
2016	235	235
2017	152	152
2018	124	124
2019	144	144
2020	156	156
2021	72	72

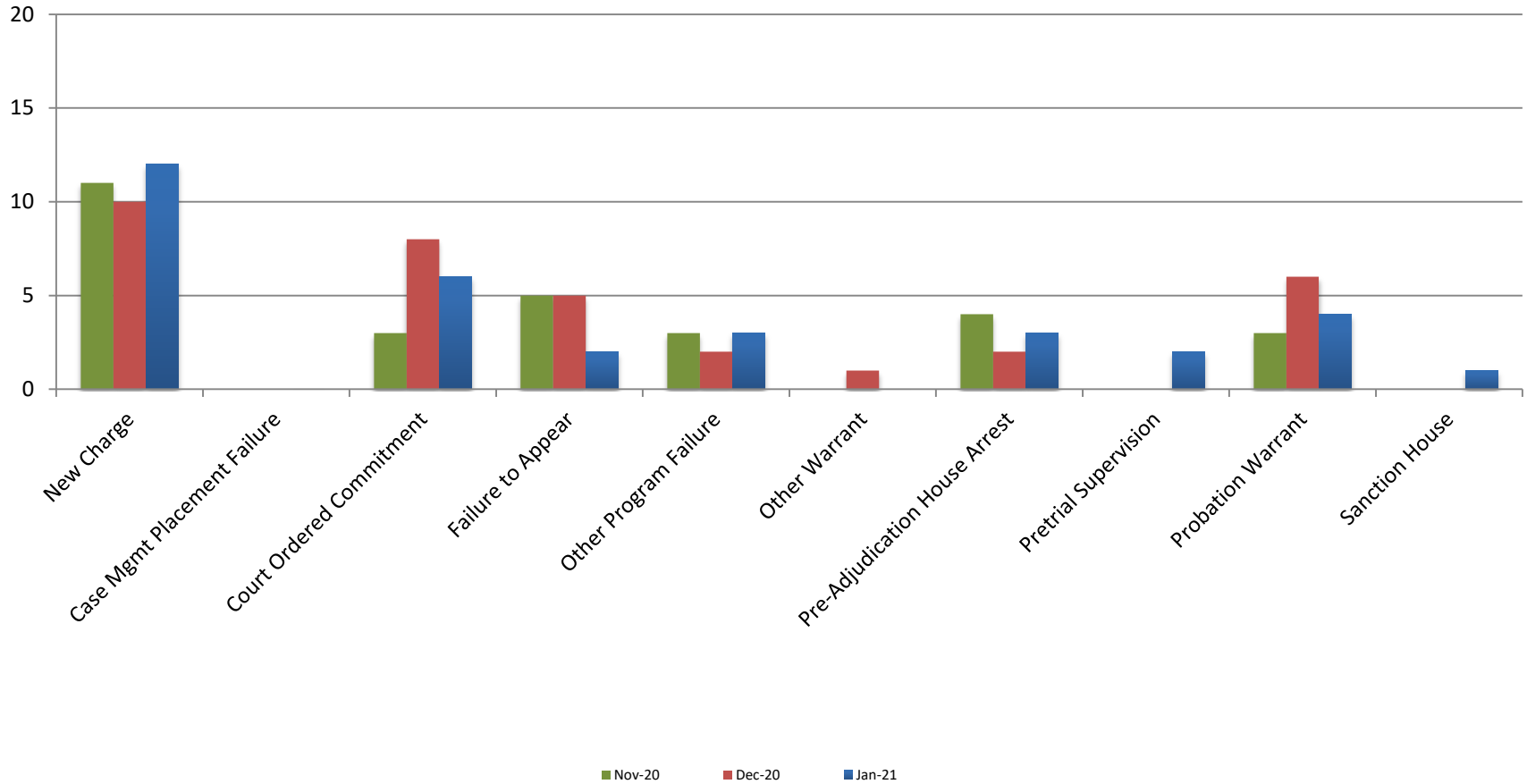
Year **January** **January YTD Avg.**

2016	61	61
2017	43	43
2018	50	50
2019	50	50
2020	53	53
2021	33	33

JDF ADP
January 2016 - present



Reason for JDF Admits



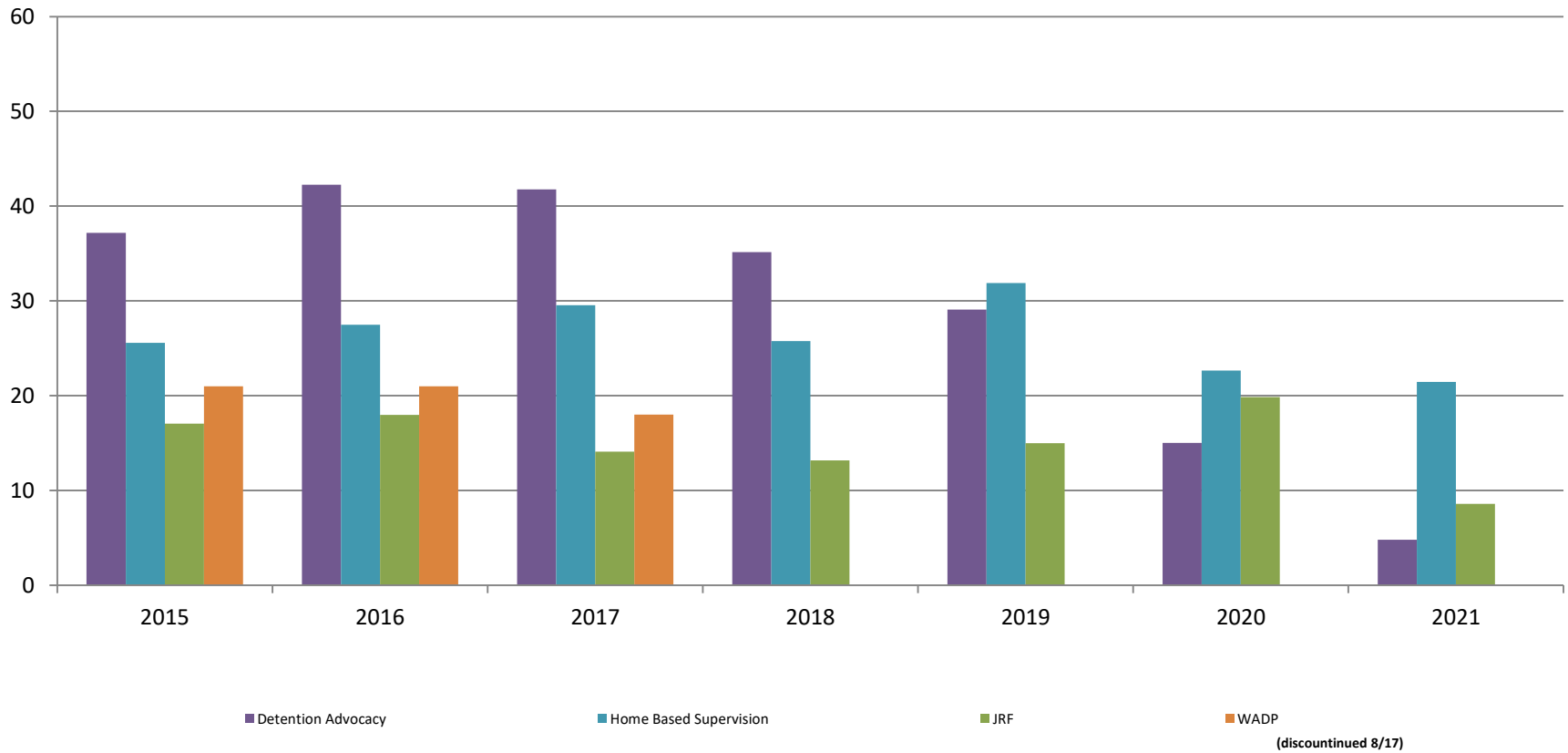
Reason for JDF Admits

Reason	January 2020	January 2021
New Charges	16	12
Case Management Placement Failures	0	0
Court Ordered Commitment	7	6
Failure to Appear	12	2
Other Program Failure	1	3
Other Warrant	2	0
Pre-Adjudication House Arrest	3	3
Pretrial Supervision	0	2
Probation Warrant	12	4
Sanction House	0	1



Juvenile Detention Alternatives

ADP: January 2015 - present



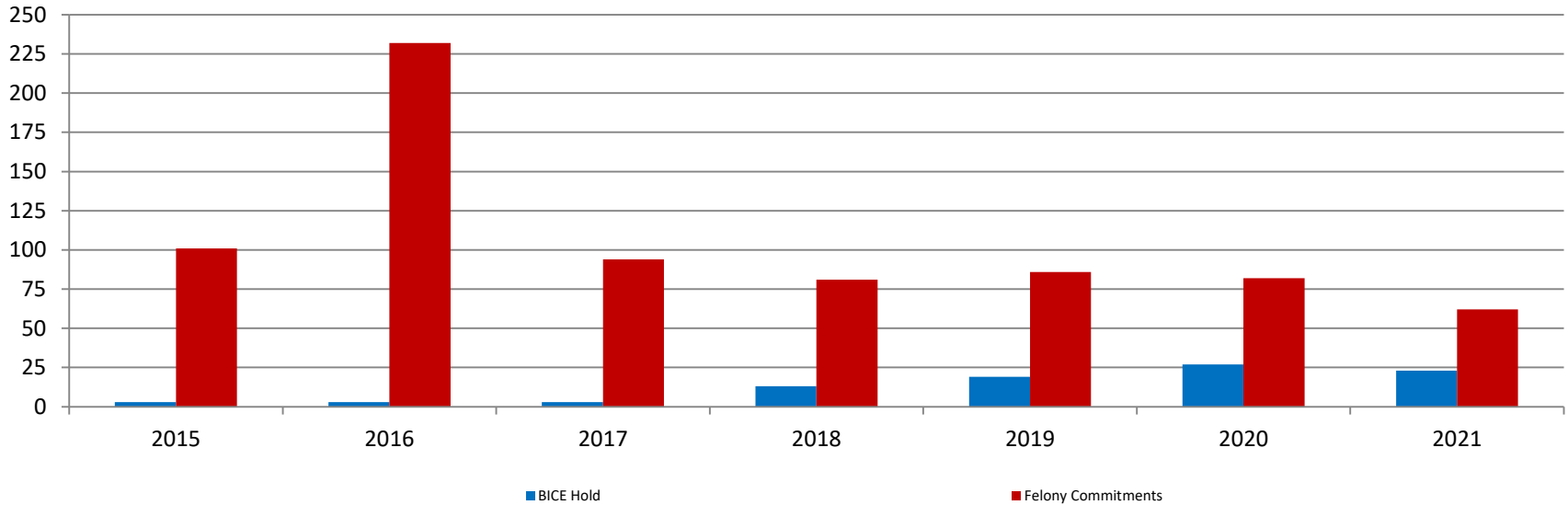
Juvenile Detention Services

January ADP	2018	2019	2020	2021
Juvenile Detention Facility	50	50	53	33
Juvenile Residential Facility	13	15	20	9
Home Based Supervision	26	32	23	21
Detention Advocacy Case Management Services	35	29	15	5
Weekend Alternative Detention Program (total)	0	N/A	N/A	N/A

January YTD AVERAGE	2018	2019	2020	2021
Juvenile Detention Facility	50	50	53	33
Juvenile Residential Facility	13	15	20	9
Home Based Supervision	26	32	23	21
Detention Advocacy Case Management Services	35	29	15	5
Weekend Alternative Detention Program	0	N/A	N/A	N/A

Monthly Jail Snapshot: December 2020

Snapshots January 2015 - present

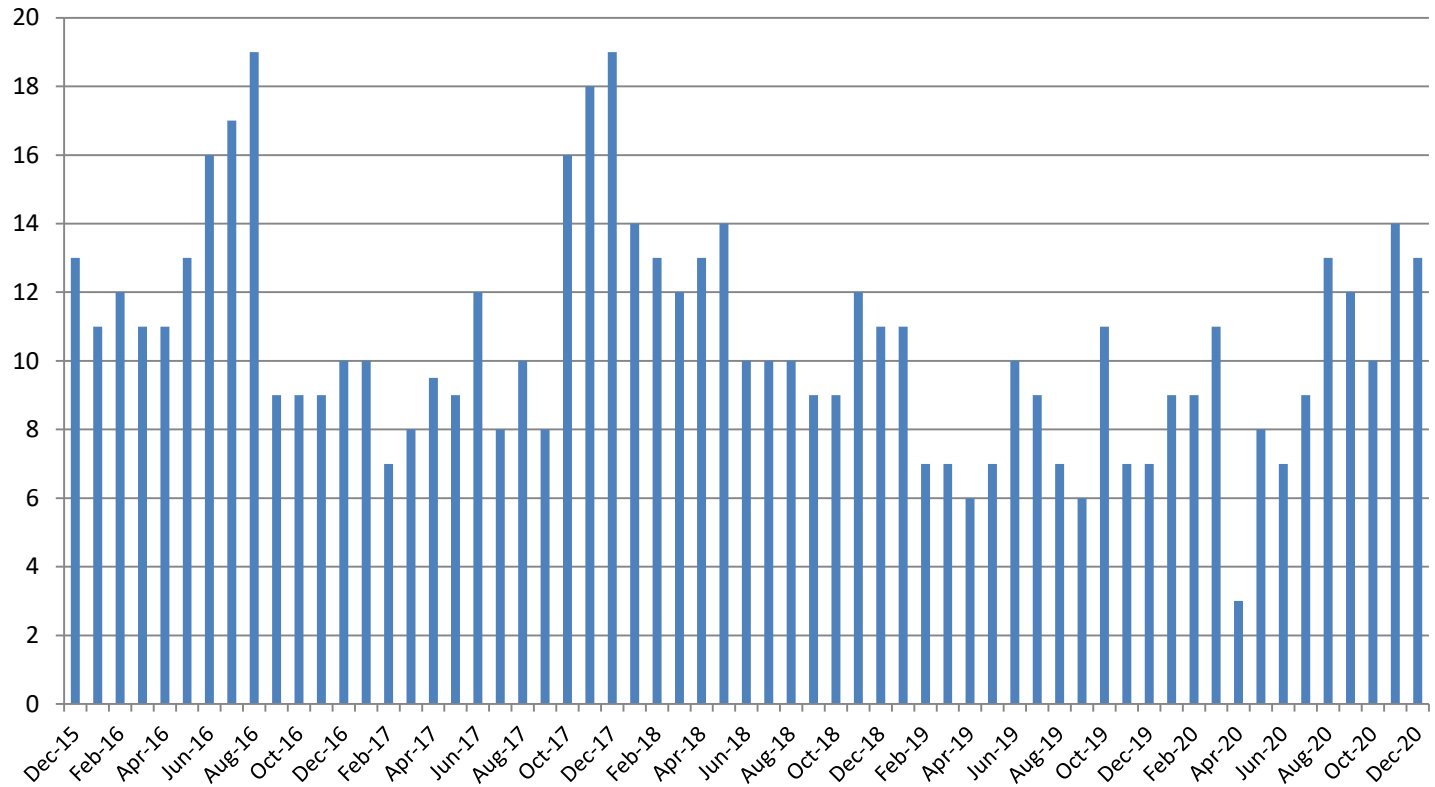


BICE Hold	2015	2016	2017	2018	2019	2020	2021
January	3	3	3	13	19	27	23

Felony Commitments	2015	2016	2017	2018	2019	2020	2021
January	101	232	94	81	86	82	62



Journal Entry Completion (Average Days) December 2015 - present



December	2015	2016	2017	2018	2019	2020
Avg. Days	13	10	19	11	7	13
YTD Avg.	9	12	11	11.4	7.9	10

