

Criminal Justice Coordinating Council

Population Report & Program Trends

November 2021

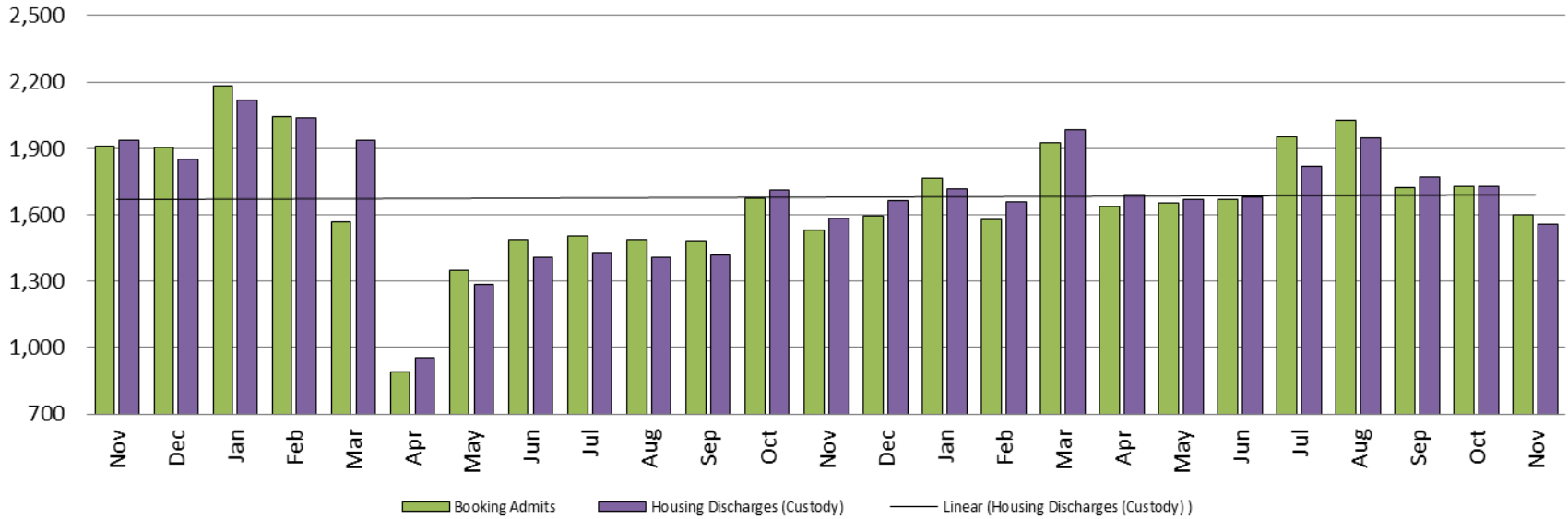


Sedgwick County...
working for you

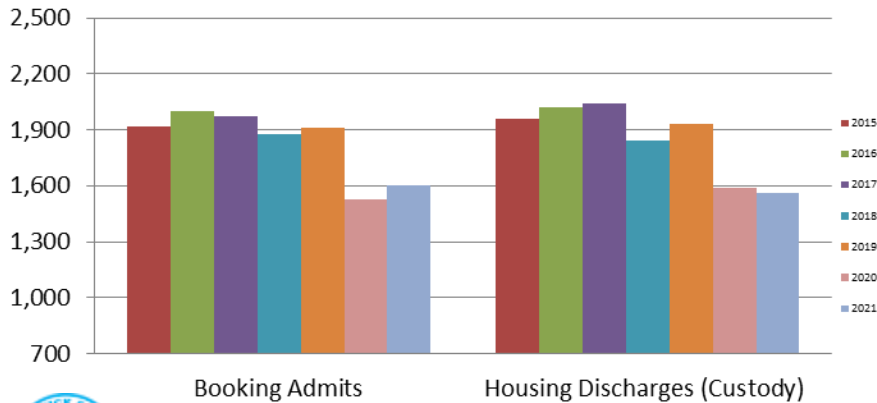
Detention Facility

Booking Admits & Housing Discharges from Custody

November 2019 - present

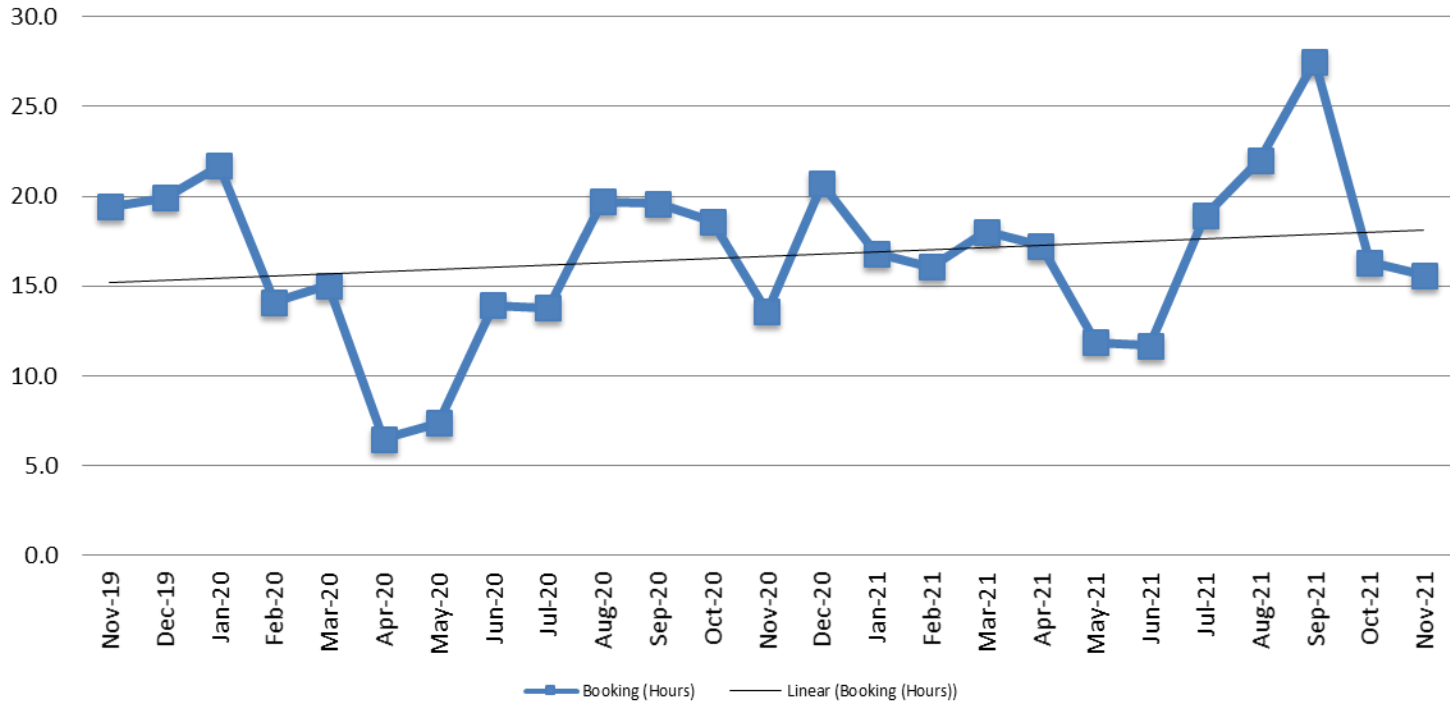


Bookings Year over Year: Month of November



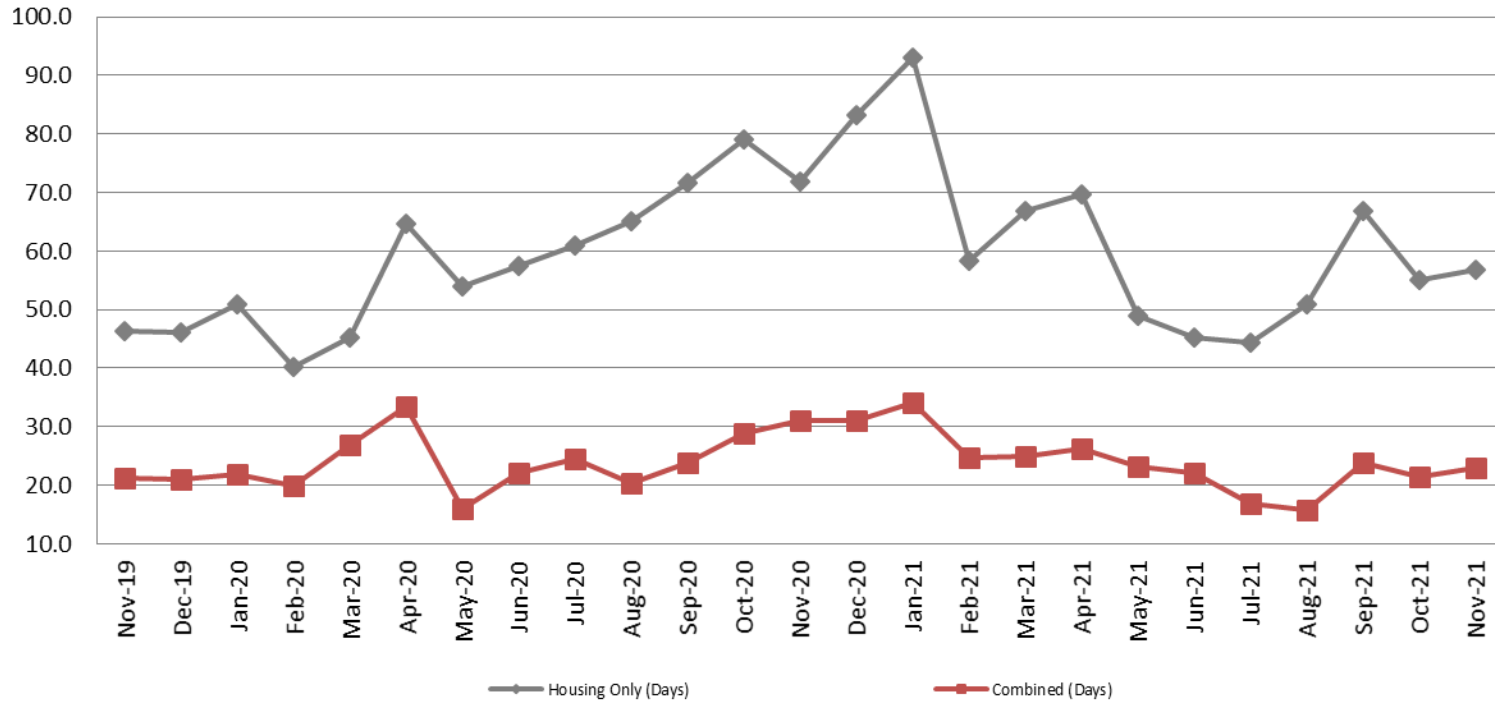
Bookings November	Housing Discharges November
2019: 1,910	2019: 1,935
2020: 1,530	2020: 1,586
2021: 1,601	2021: 1,558

Average Length of Stay: Booking (Hours) November 2019 - present



November	November YTD Average
2019: 19.4	2019: 15.1
2020: 13.6	2020: 14.9
2021: 15.6	2021: 17.5

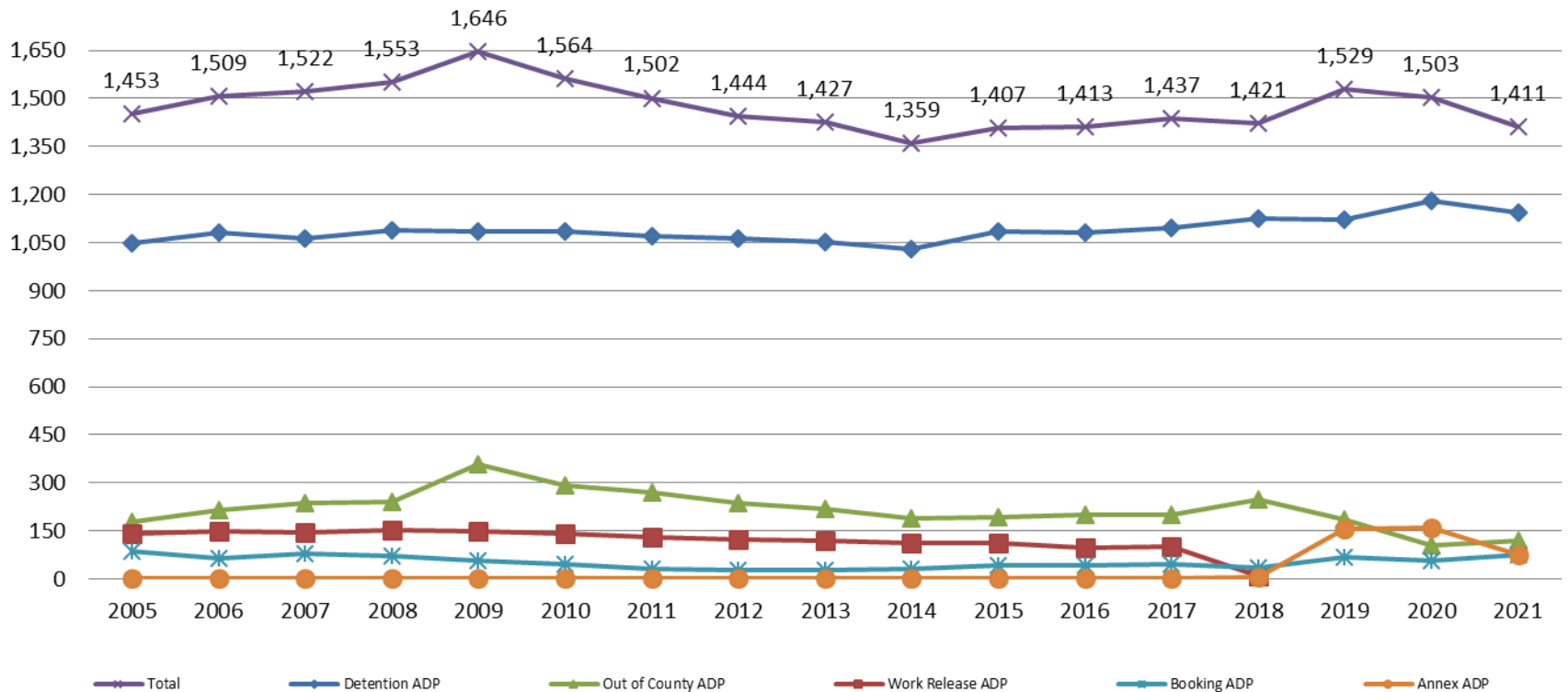
Average Length of Stay: Housing & Combined (Days) November 2019 - present



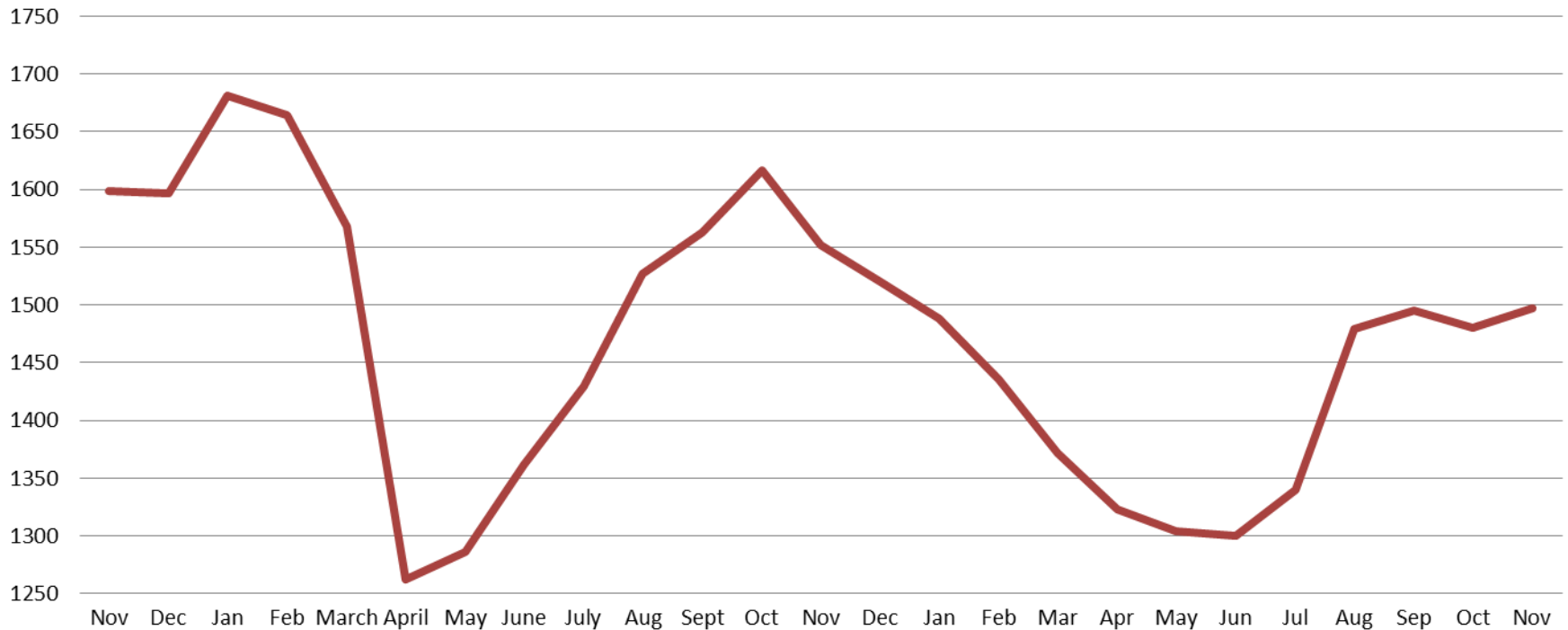
Month Year	Housing Only	Housing YTD AVG	Combined Days	Combined YTD AVG
November 2019	46.3	41.7	21.3	20.6
November 2020	71.9	60.1	31.0	24.5
November 2021	56.9	59.7	22.9	23.3

Jail: Annual Average Daily Population (ADP)

TRENDS: Booking, Detention, Work Release, & Out of County Annual ADP: 2005 - present

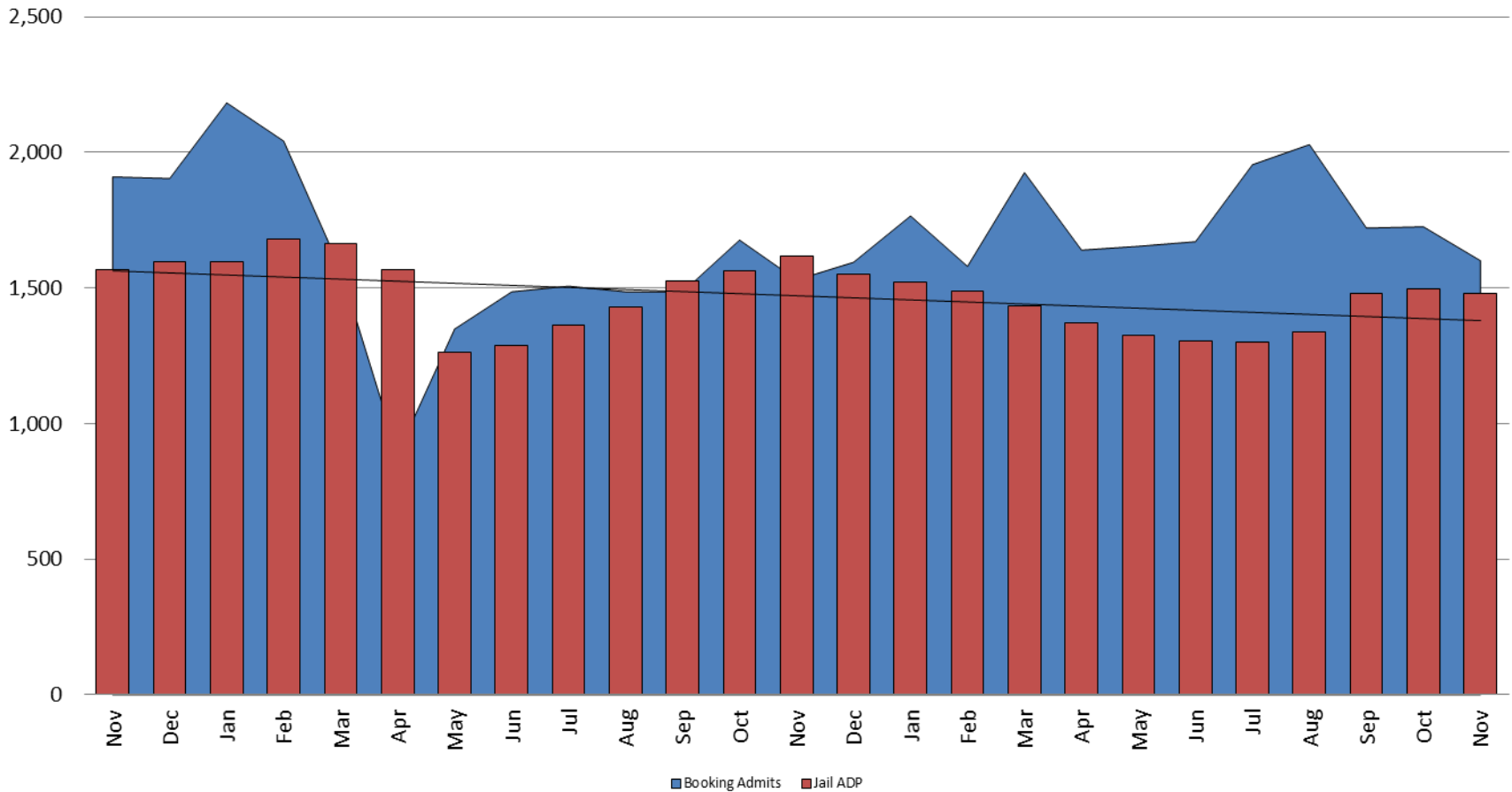


TOTAL MONTHLY ADP: JAIL (Booking, Detention Facility, Annex, & Out of County) November 2019 - present

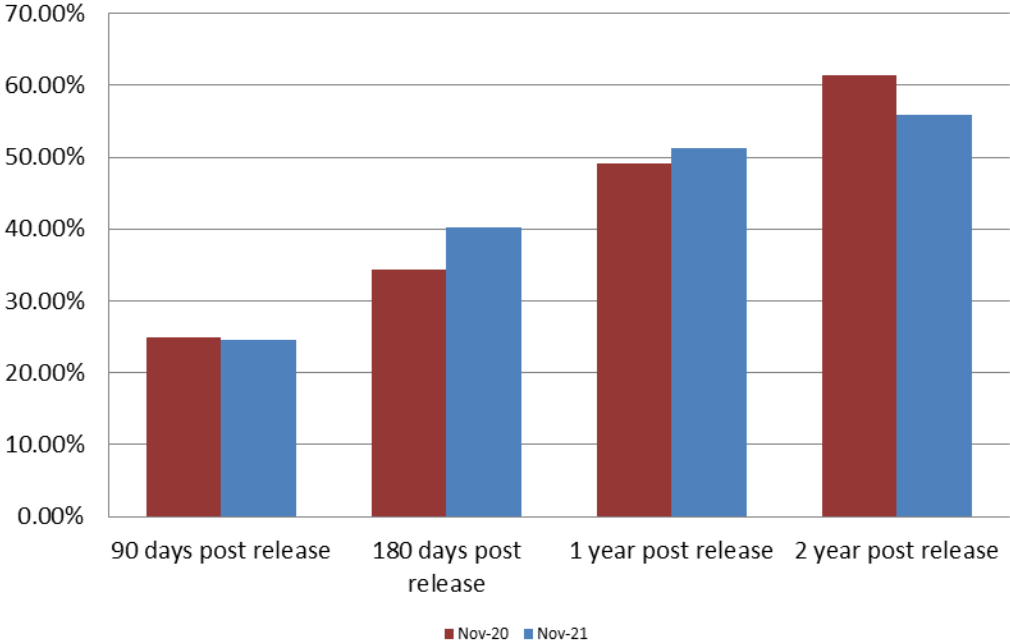


November 2019	November 2020	November 2021
1,598	1,552	1,497

Booking Admits & Total Monthly ADP (Jail): November 2019 - present



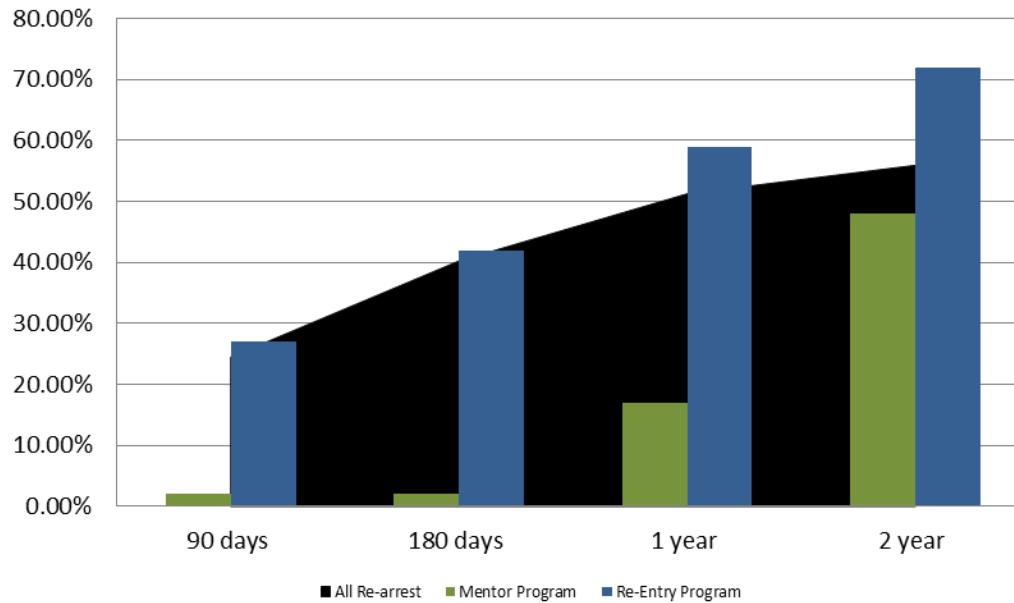
Percent of Released Inmates Rearrested November



Month Year	90 Days	180 Days	1 Year	2 Years
November 2020	24.92%	34.44%	49.16%	61.33%
November 2021	24.51%	40.26%	51.26%	55.94%



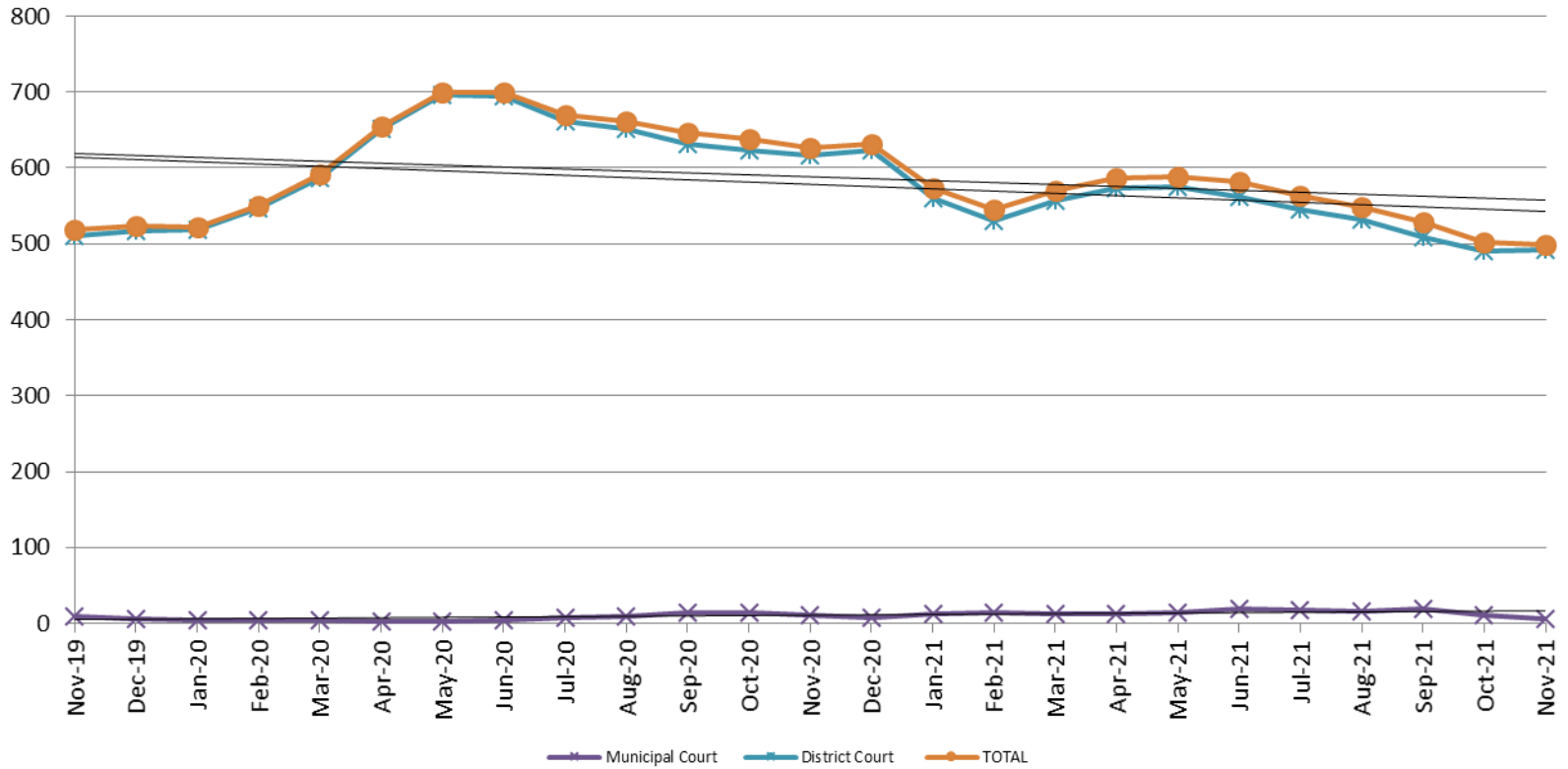
Recidivism by Programs November 2021



November 2021	90 Days	180 Days	1 year	2 years
All Re-arrests	24.41%	40.26%	51.26%	55.94%
Mentor Program	2%	2%	17%	48%
Re-Entry Program	27%	42%	59%	72%



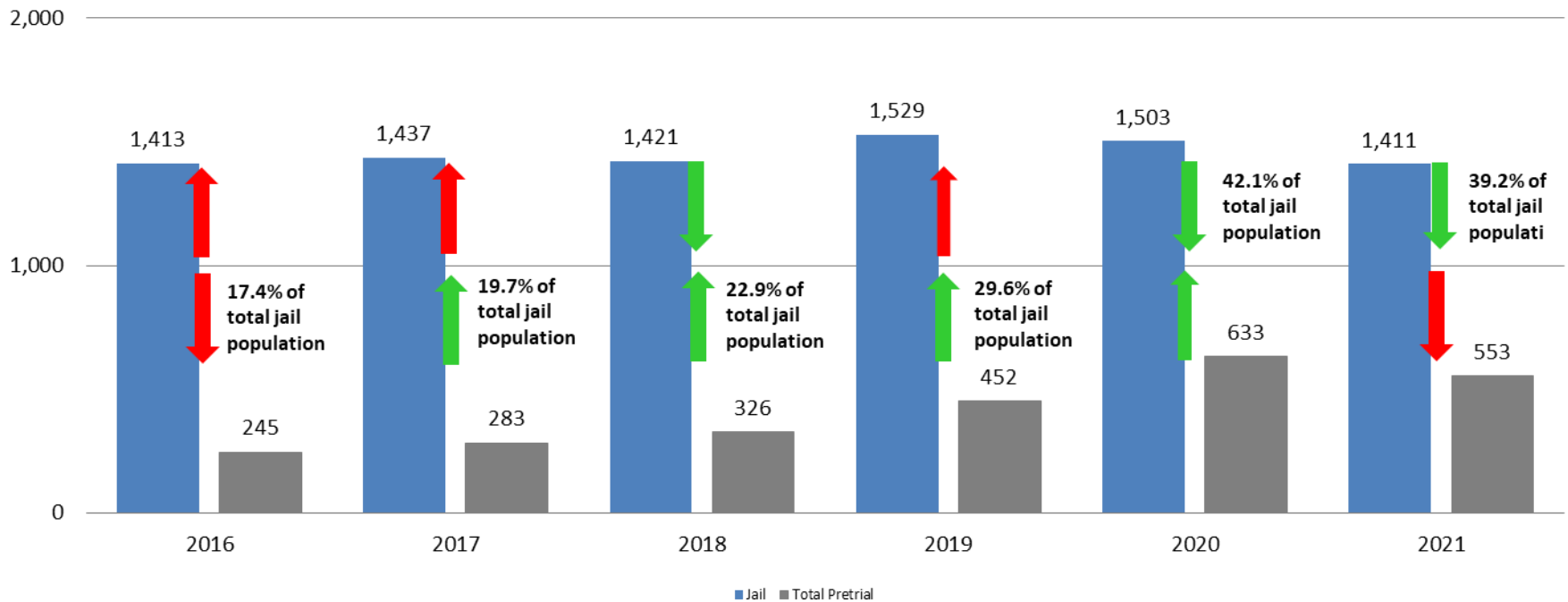
Pretrial Services Program (PSP) Monthly ADP: November 2019 - present



November	2019 ADP	2020 ADP	2021 ADP	2019 YTD Avg.	2020 YTD Avg.	2021 YTD Avg.
Muni. Court	9	11	6	12	7	14.1
Dist. Court	510	616	492	433	625	539
Total	519	627	498	446	633	553.2

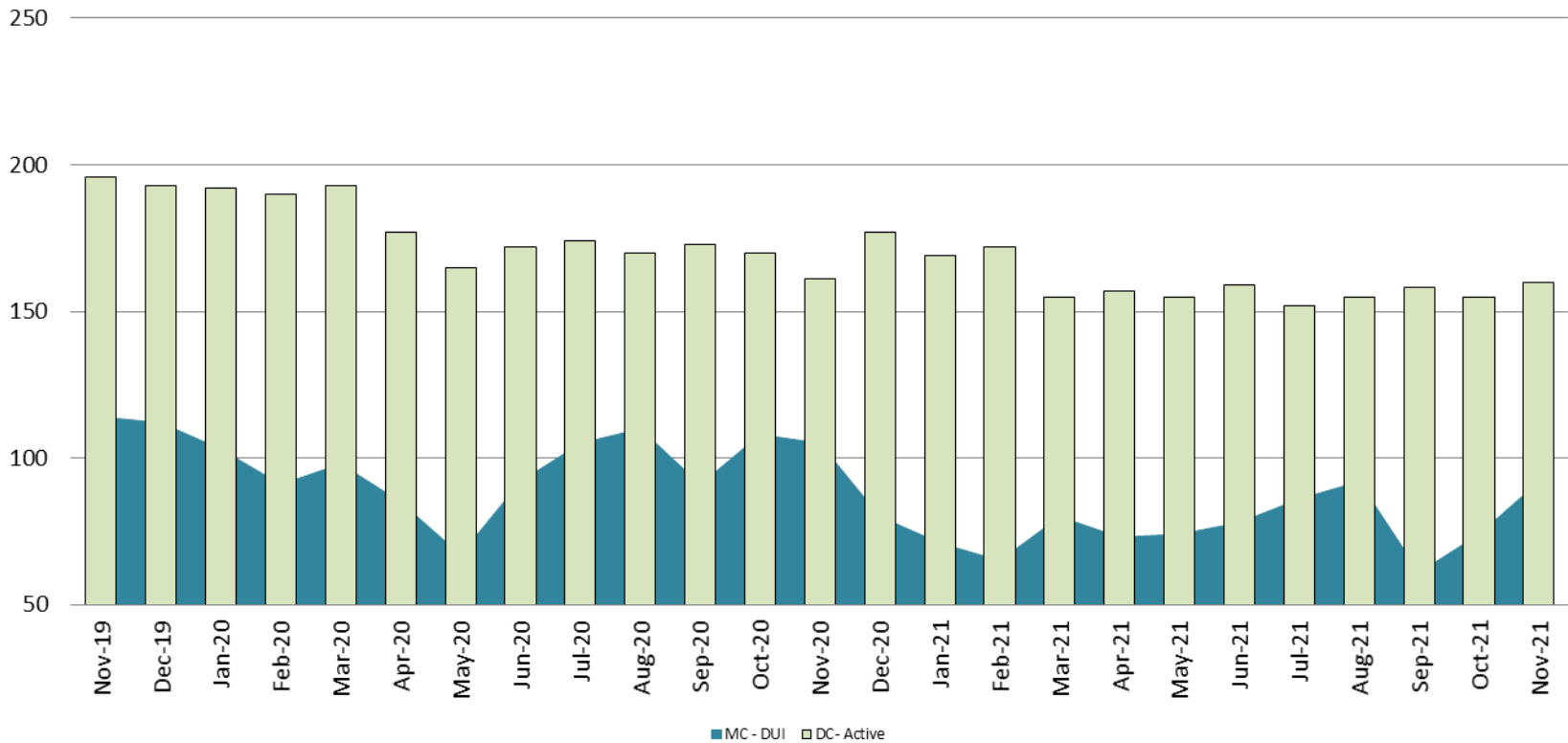
Correlation: Total & PSP

Total Annual ADP: 2016 - present



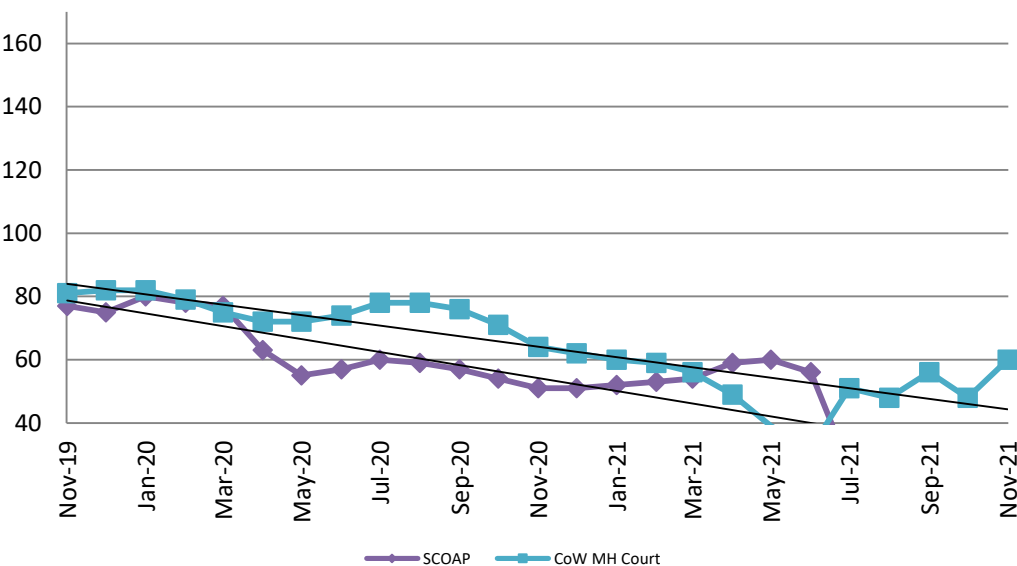
Diversion - Active Caseload

November 2019 - present

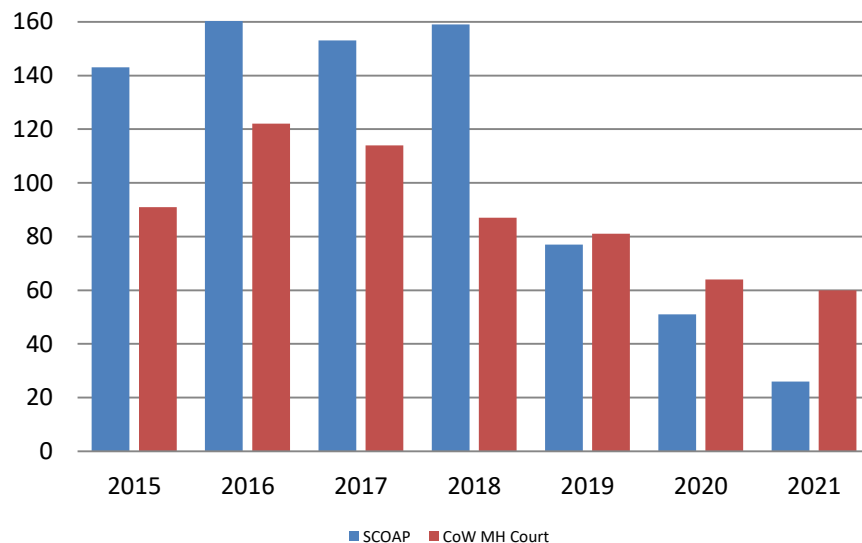


November	2019	2020	2021	2019 YTD Avg.	2020 YTD Avg.	2021 YTD Avg.
Muni. Court- DUI	114	105	92	104	96	77
Dist. Court- Active	196	161	160	190	176	159

Mental Health - ADP November 2019 - present



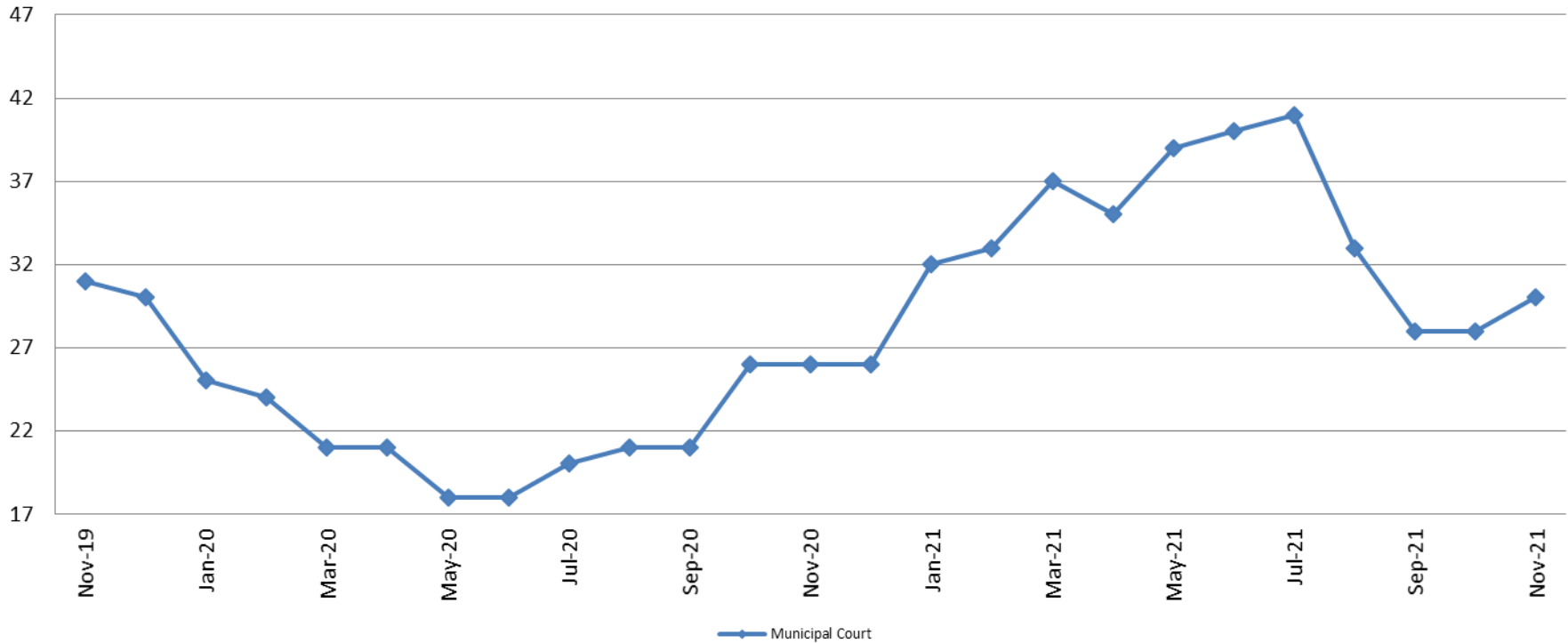
Mental Health ADP Year over Year - November



November	2019 ADP	2020 ADP	2021 ADP	2019 YTD Avg.	2020 YTD Avg.	2021 YTD Avg.
SCOAP	77	51	26	100	63	42
MH Court	81	64	60	95	75	51



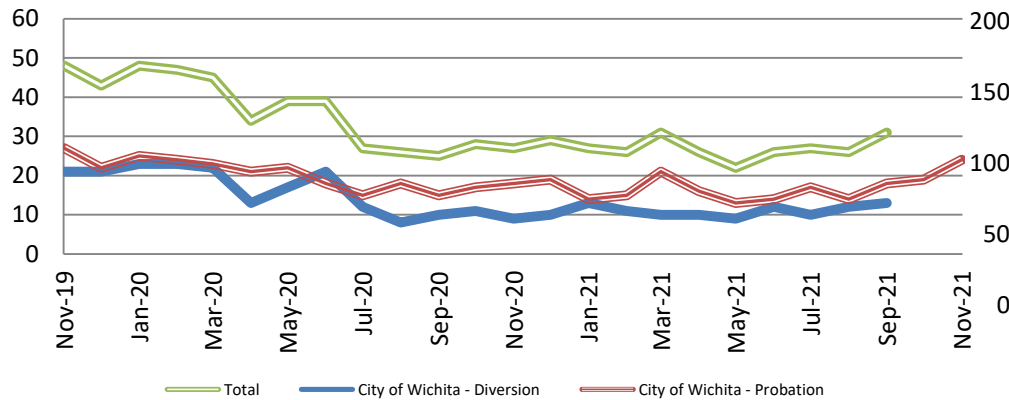
Day Reporting - Active Caseload November 2019 - present



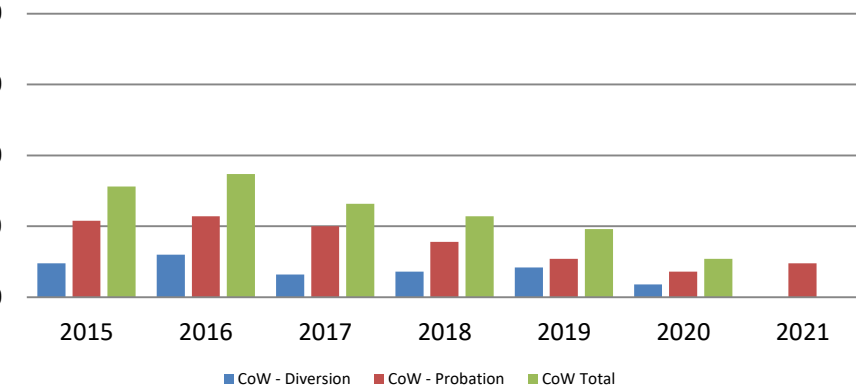
November	2016	2017	2018	2019	2020	2021
Muni. Court	28	36	30	31	26	30
Muni. Court YTD Avg.	40	36	34	30	22	34



Drug Court - City of Wichita ADP: November 2019 - present



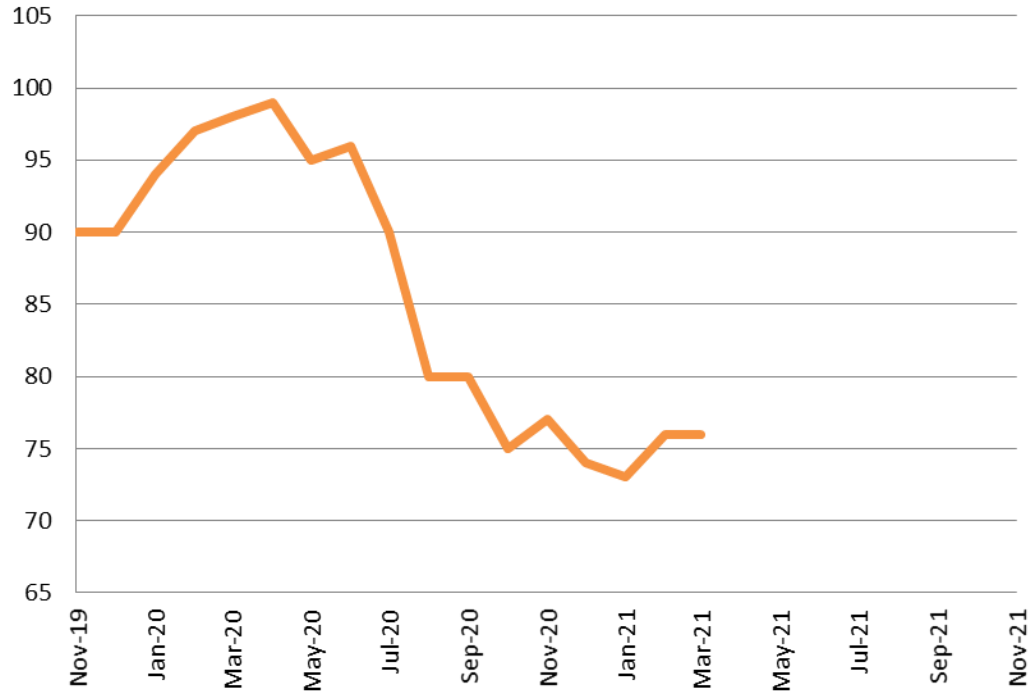
Drug Court- City of Wichita Year over Year - November



November	2019	2020	2021
Diversion	21	9	N/A
Probation	27	18	24
Total	48	27	N/A



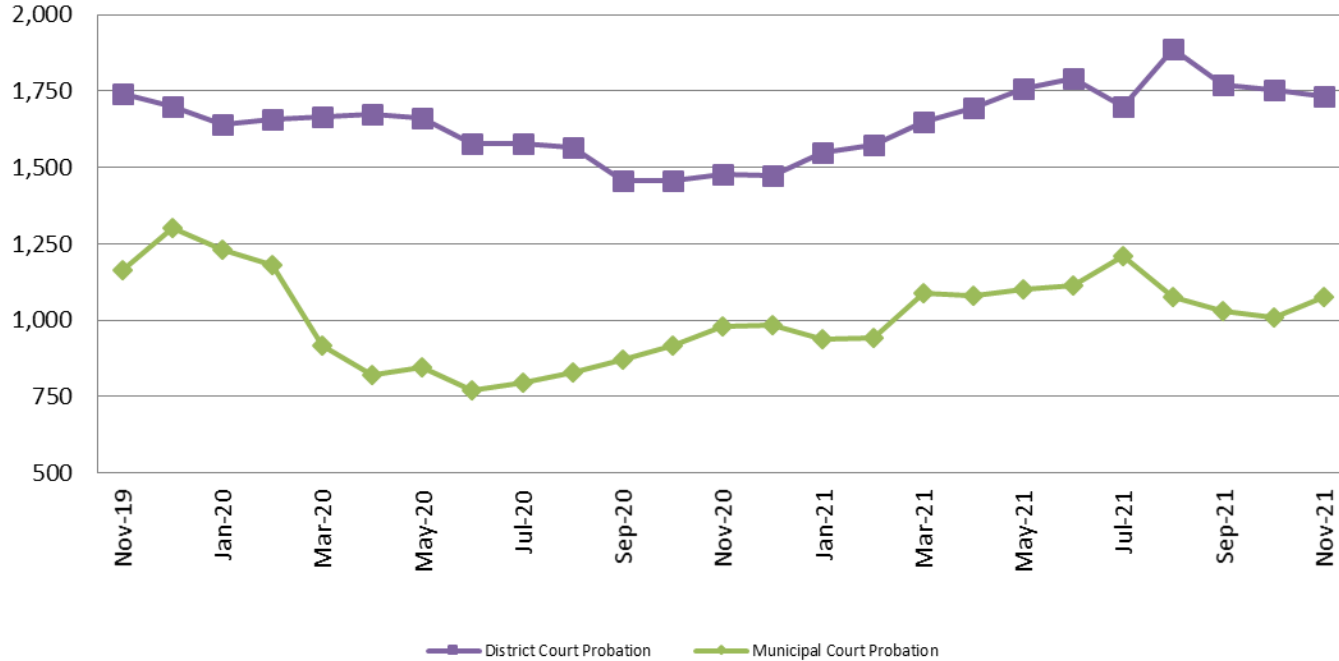
Drug Court - Sedgwick County ADP: November 2019 - present



November	2019	2020	2021
Sedg. Co. ADP	90	77	N/A
YTD Avg.	97	89	N/A



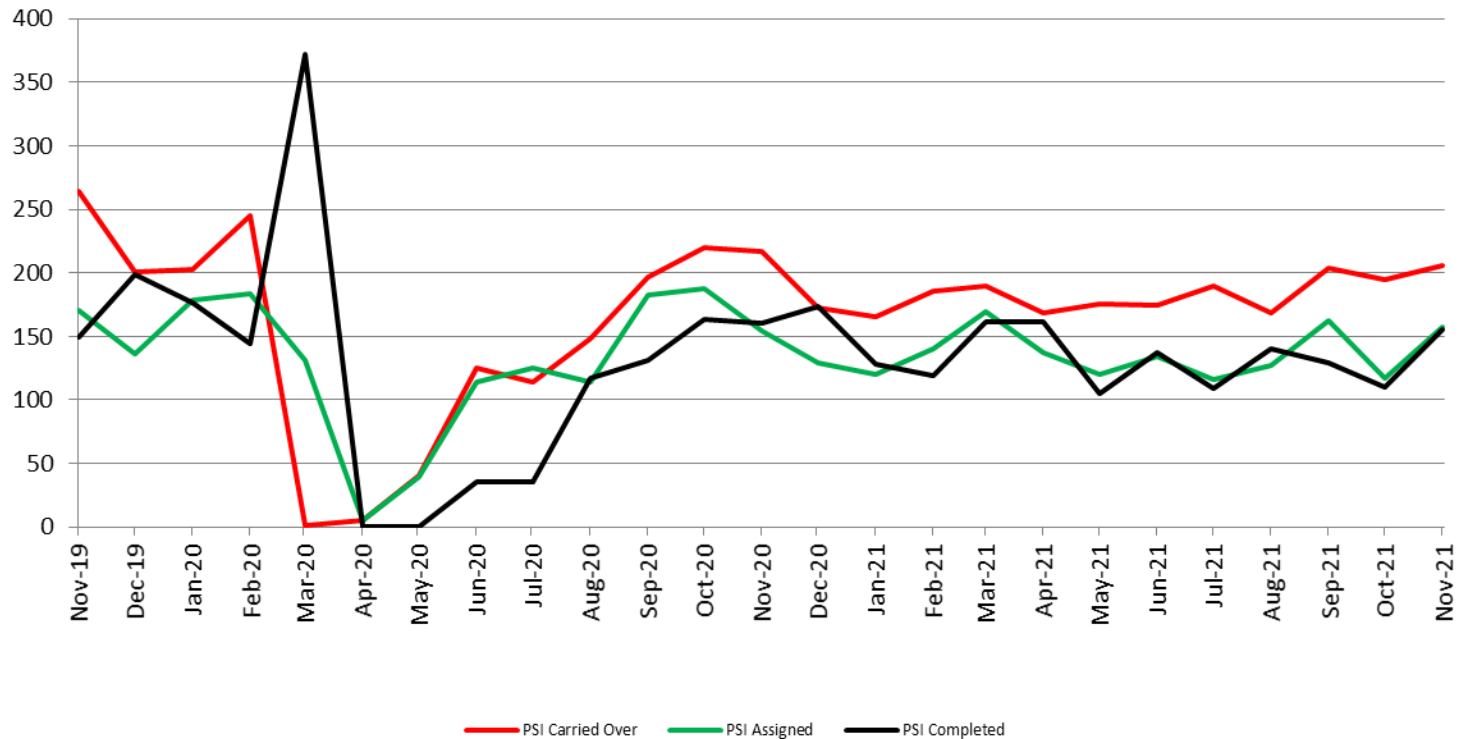
Probation - Active Caseloads November 2019 - present



November	2019	2020	2021	2019 YTD Avg.	2020 YTD Avg.	2021 YTD Avg.
Dist. Court Probation	1,743	1,478	1,733	1,886	1,583	1,715
Muni. Court Probation	1,165	980	1,078	1,250	923	1,062



District Court Probation: Pre-Sentence Investigation November 2019 - present

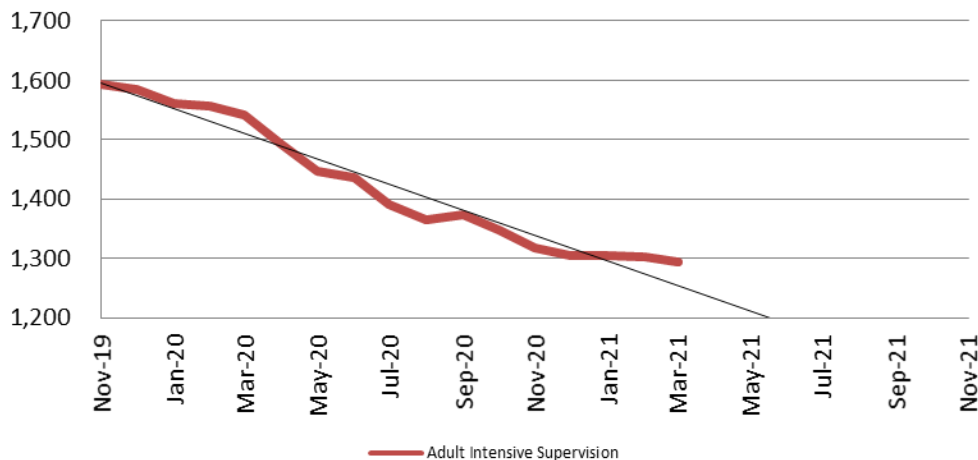


November	2019	2020	2021
Carried Over	264	217	206
Assigned	171	154	157
Completed	149	160	155



Community Corrections

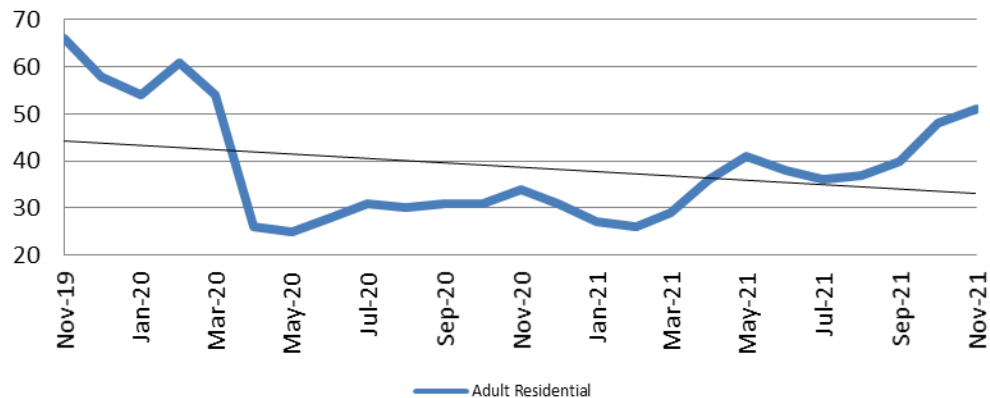
**Adult Intensive Supervision Probation (AISP):
ADP November 2019 - present**



Year	November	November YTD Avg.
2019	1,593	1,550
2020	1,317	1,439
2021	N/A	N/A

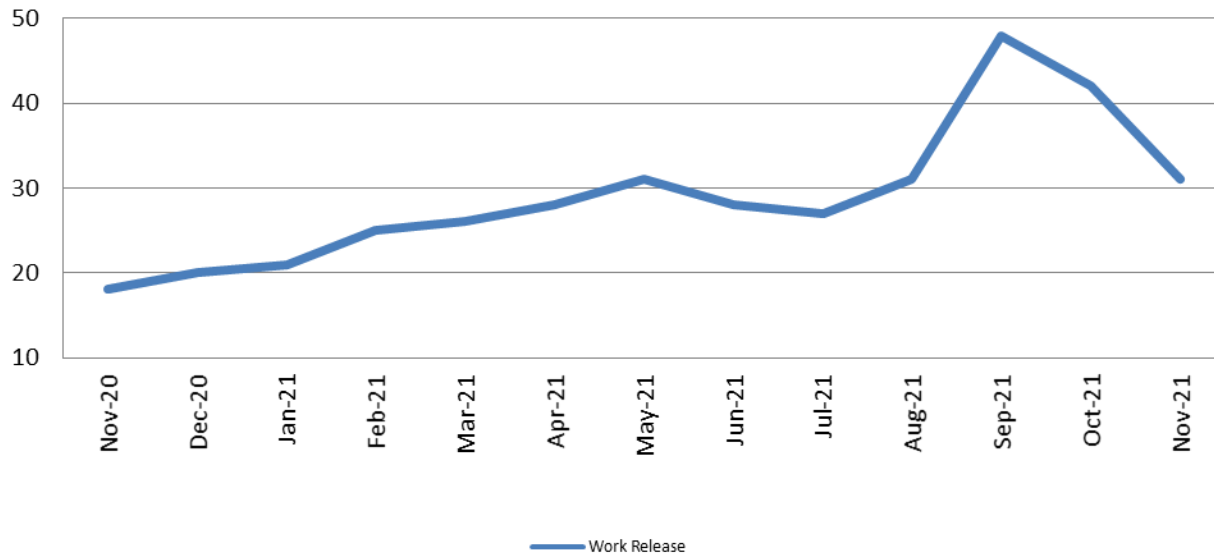
Year	November	November YTD Avg.
2019	66	65
2020	34	37
2021	51	37

**Adult Residential: ADP
November 2019 - present**



Community Corrections

Work Release: ADP November 2020 - present

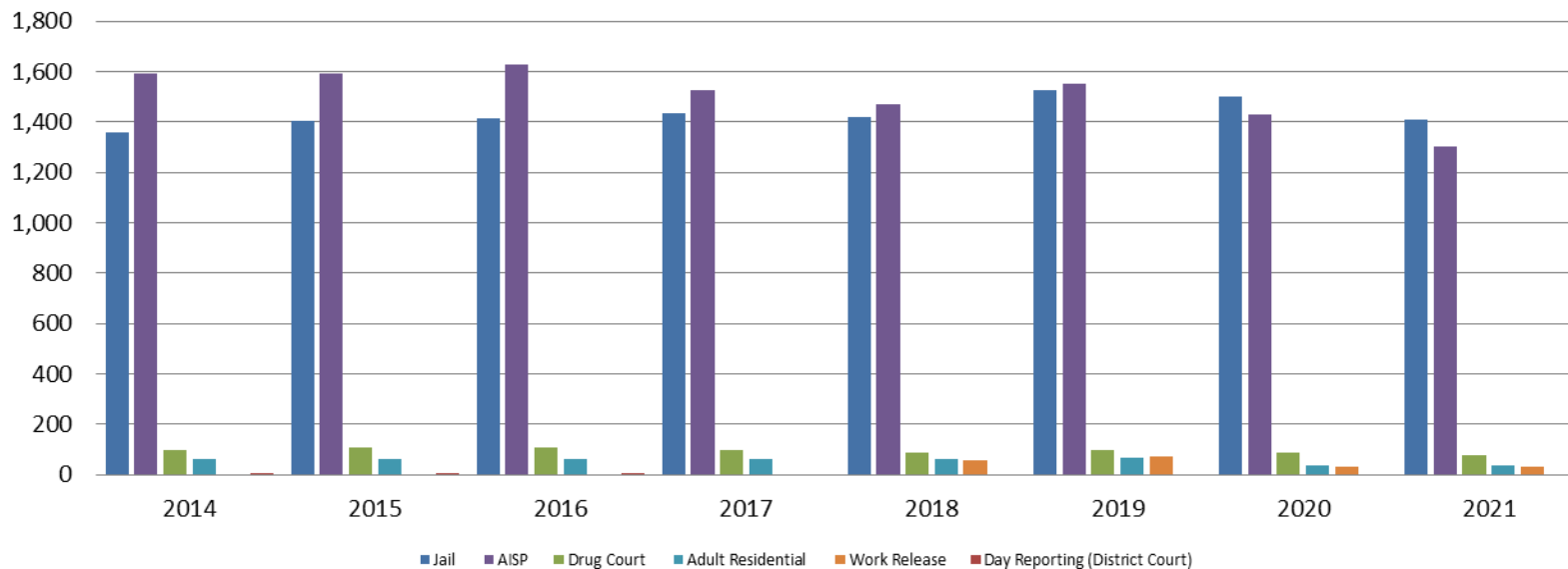


Month Year	Total	YTD Avg.
November 2020	18	31
November 2021	31	31



Correlation: Total & Sedgwick County Programs (Adult)

Total Annual ADP 2014 - present

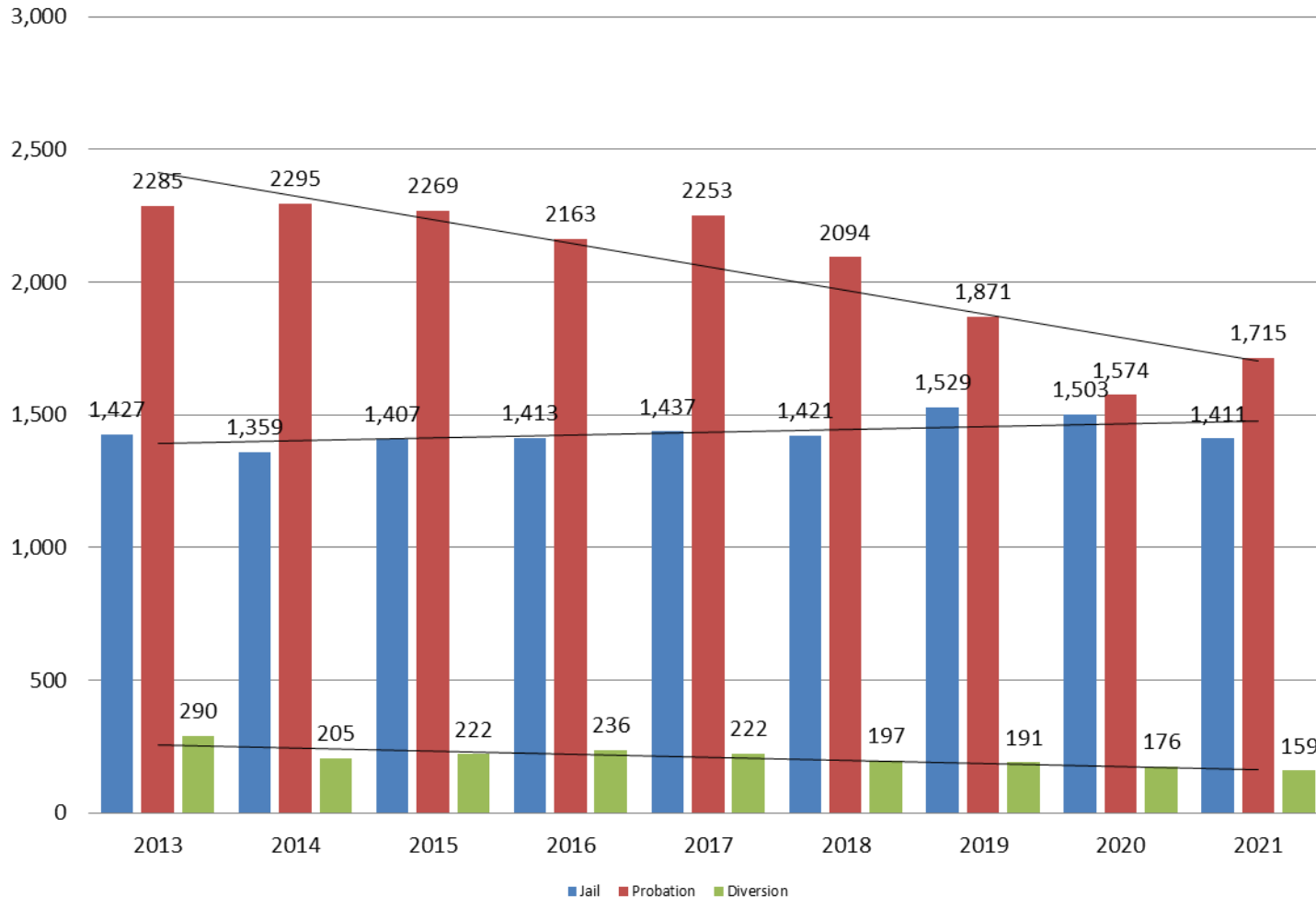


	2019	2020	2021
Jail	1,529	1,503	1,411
AISP	1,553	1,428	1,300
Drug Court	97	88	75
Adult Residential	65	36	37
Work Release	71	30	31
Day Reporting (DC)	0	0	0



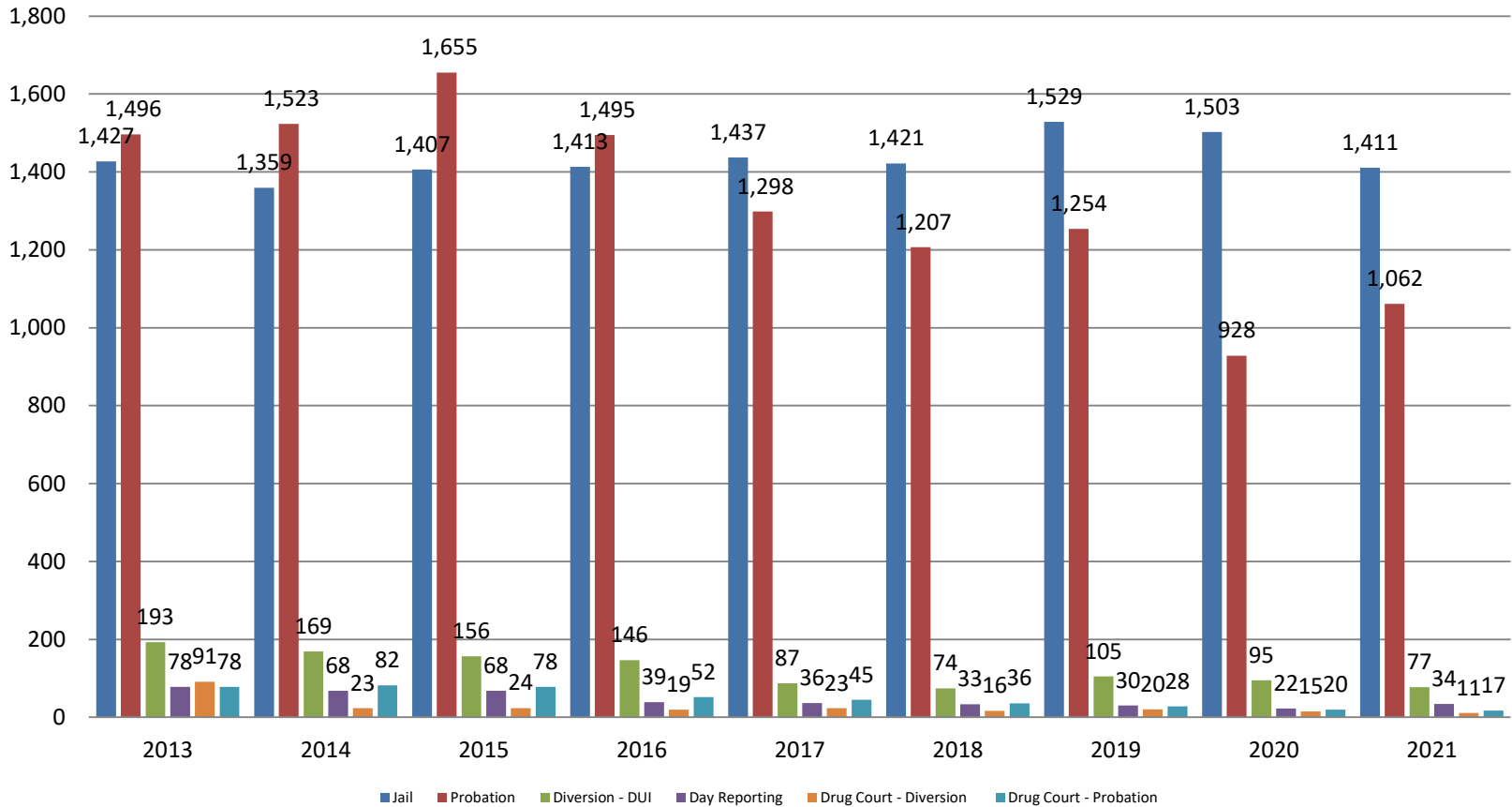
Correlation: Total & District Court Programs

Total Annual ADP: 2013 - present



Correlation: Total & City of Wichita / Municipal Court Programs

Total Annual ADP: 2013 - present



Juvenile

**JIAC Intakes
November 2016 - present**

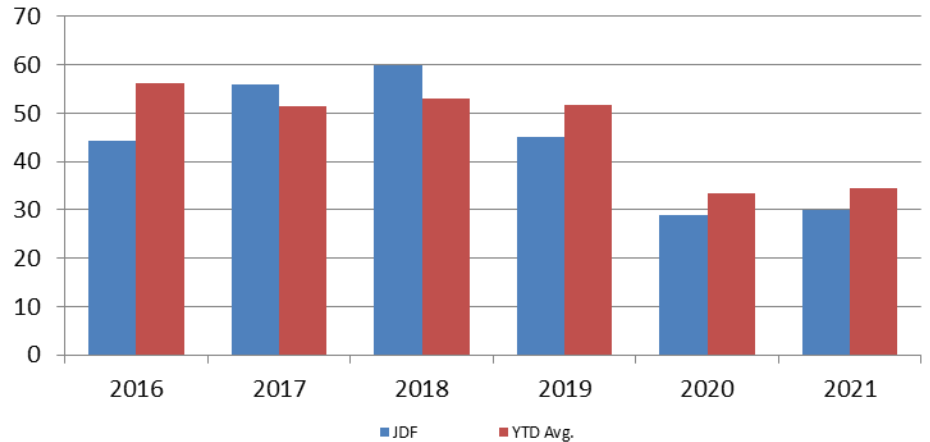


Year	November	November YTD Avg.
2016	180	211
2017	169	151
2018	166	156
2019	157	146
2020	145	112
2021	149	103

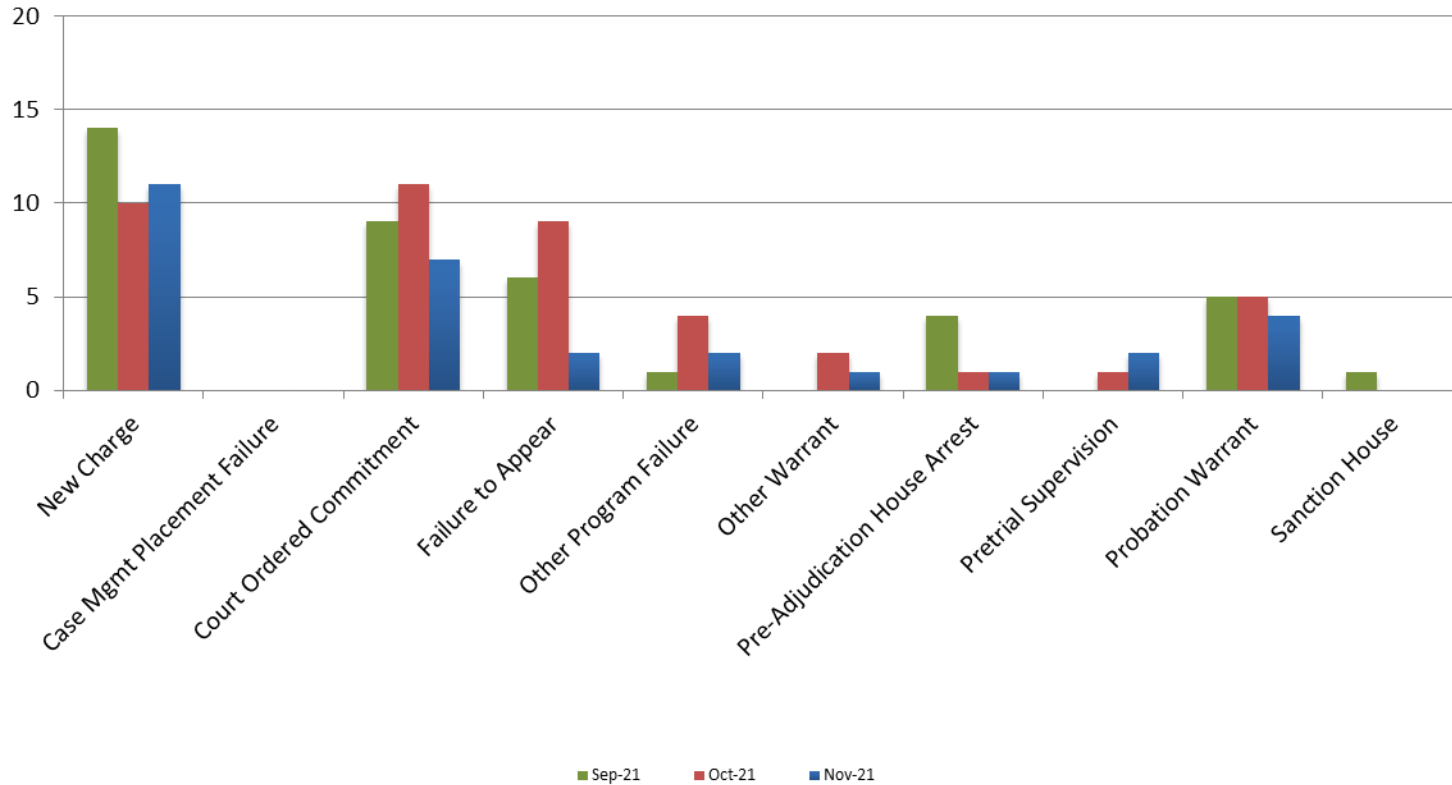
Year November November YTD Avg.

2016	44	56
2017	56	51
2018	60	53
2019	45	52
2020	29	33
2021	30	34

**JDF ADP
November 2016 - present**



Reason for JDF Admits



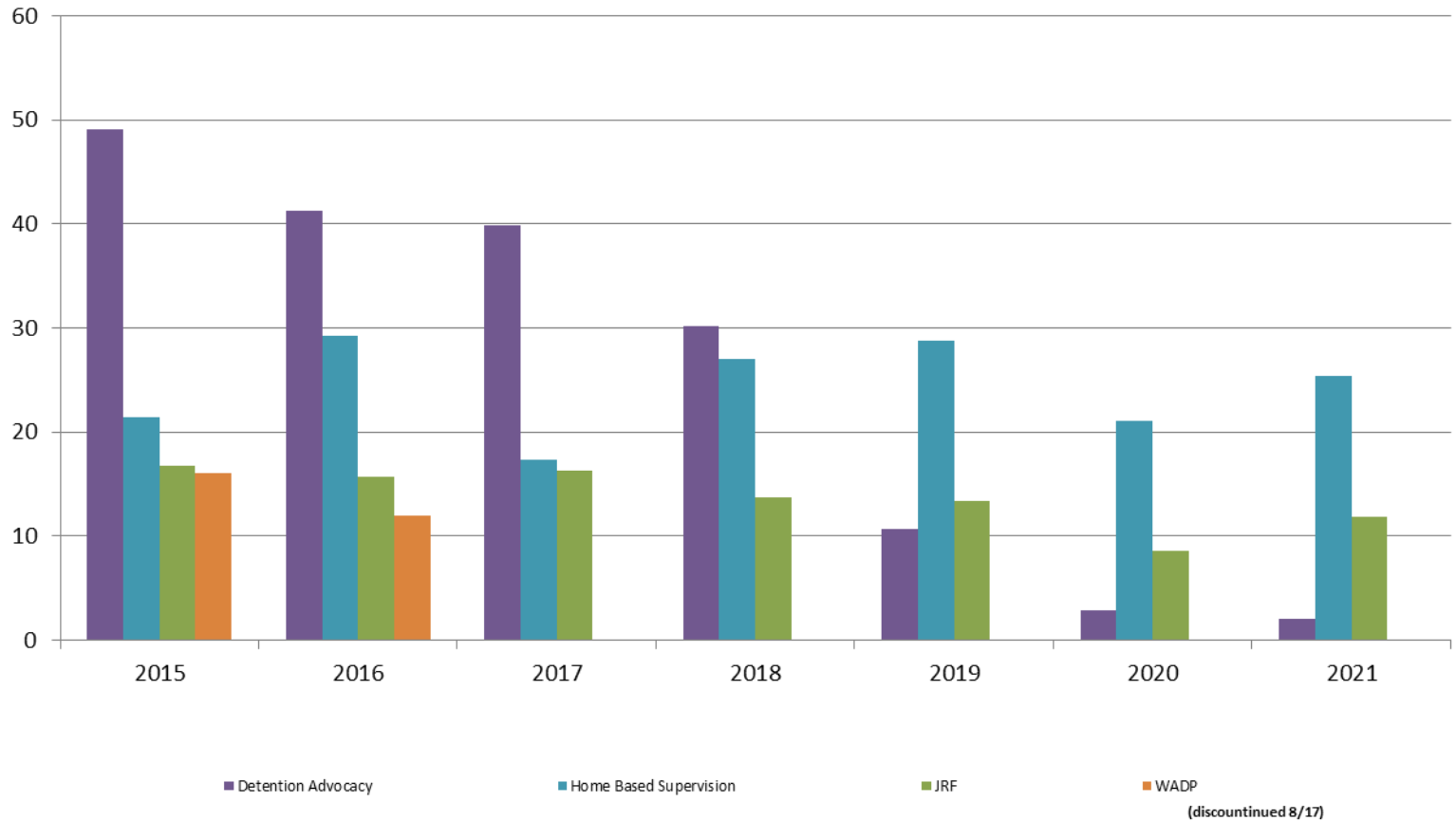
Reason for JDF Admits

Reason	November 2020	November 2021
New Charges	11	11
Case Management Placement Failures	0	0
Court Ordered Commitment	3	7
Failure to Appear	5	2
Other Program Failure	3	2
Other Warrant	0	1
Pre-Adjudication House Arrest	4	1
Pretrial Supervision	0	2
Probation Warrant	3	4
Sanction House	0	0



Juvenile Detention Alternatives

ADP: November 2015 - present



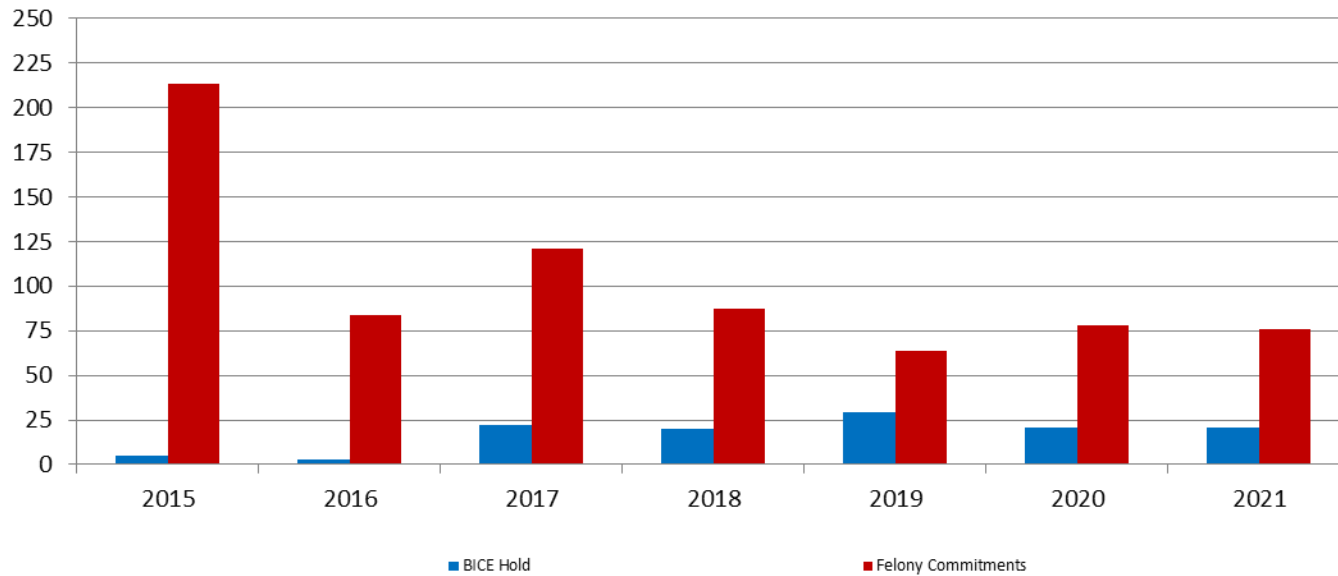
Juvenile Detention Services

November ADP	2018	2019	2020	2021
Juvenile Detention Facility	60	45	29	30
Juvenile Residential Facility	14	13	9	12
Home Based Supervision	27	29	21	25
Detention Advocacy Case Management Services	30	11	3	2
Weekend Alternative Detention Program (total)	0	N/A	N/A	N/A

November YTD AVERAGE	2018	2019	2020	2021
Juvenile Detention Facility	53	52	33	34
Juvenile Residential Facility	14	14	16	11
Home Based Supervision	25	27	28	23
Detention Advocacy Case Management Services	32	19	8	3
Weekend Alternative Detention Program	0	N/A	N/A	N/A

Monthly Jail Snapshot: November 2021

Snapshots November 2015 - present

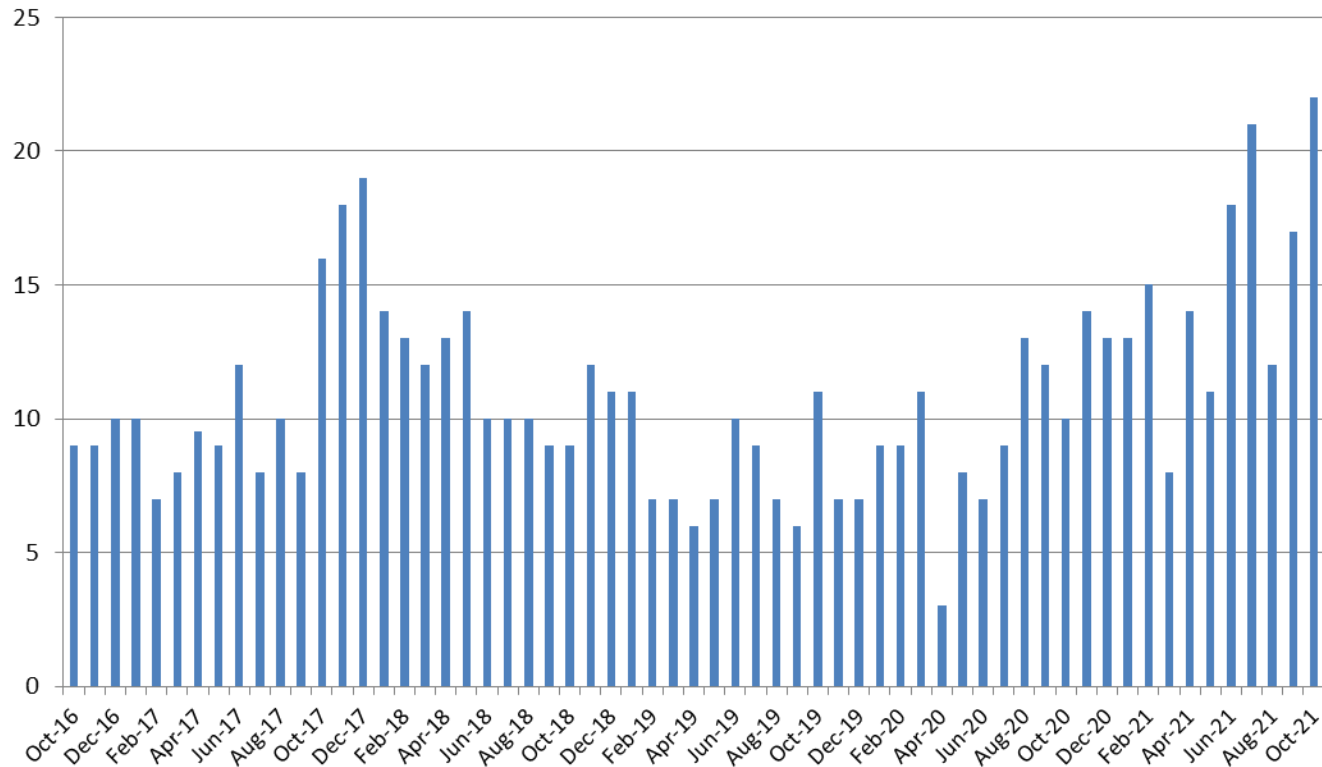


BICE Hold	2015	2016	2017	2018	2019	2020	2021
November	5	3	22	20	29	21	21

Felony Commitments	2015	2016	2017	2018	2019	2020	2021
November	213	84	121	87	64	78	76



Journal Entry Completion (Average Days) October 2016 - present



October	2016	2017	2018	2019	2020	2021
Avg. Days	9	16	9	11	10	22
YTD Avg.	13	10	11	8	9	15

