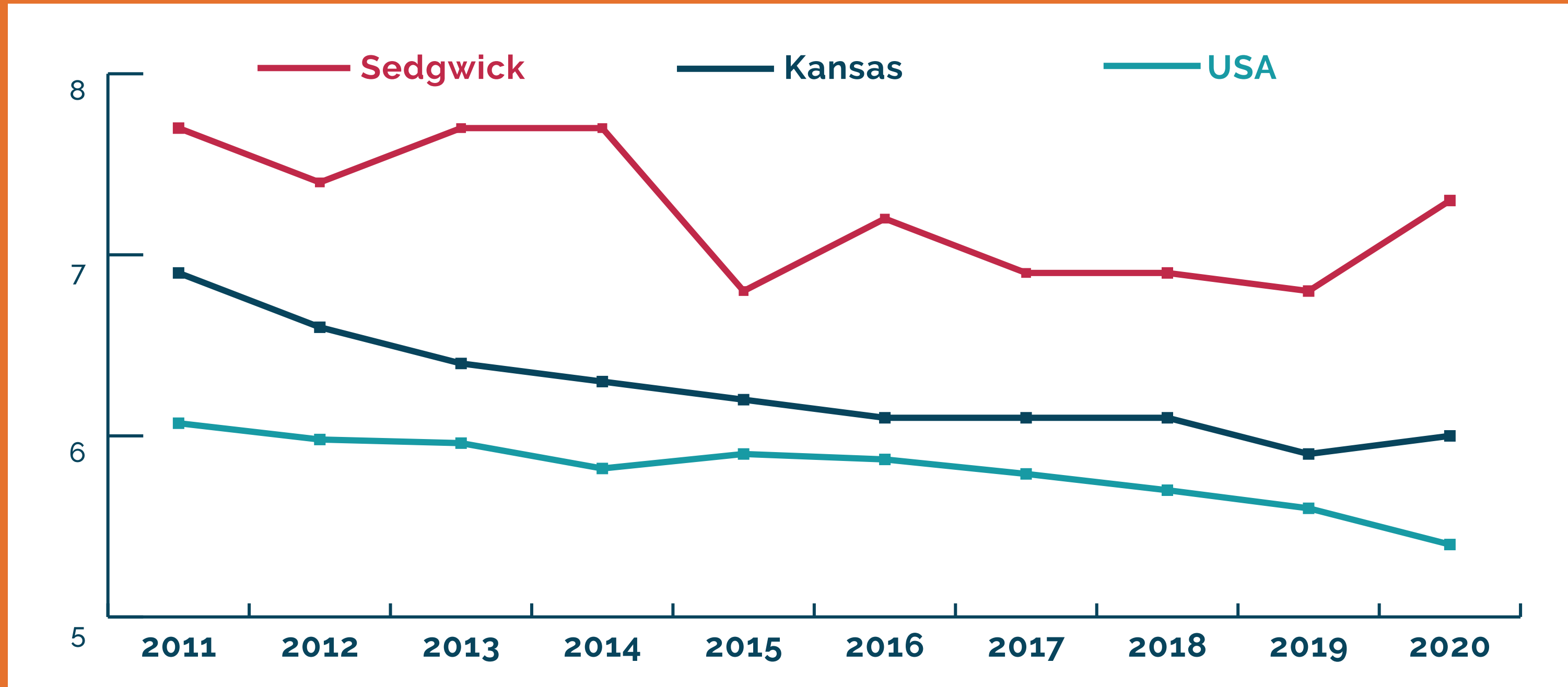


SEDGWICK COUNTY VS STATE & NATIONAL

ANNUAL INFANT MORTALITY RATE

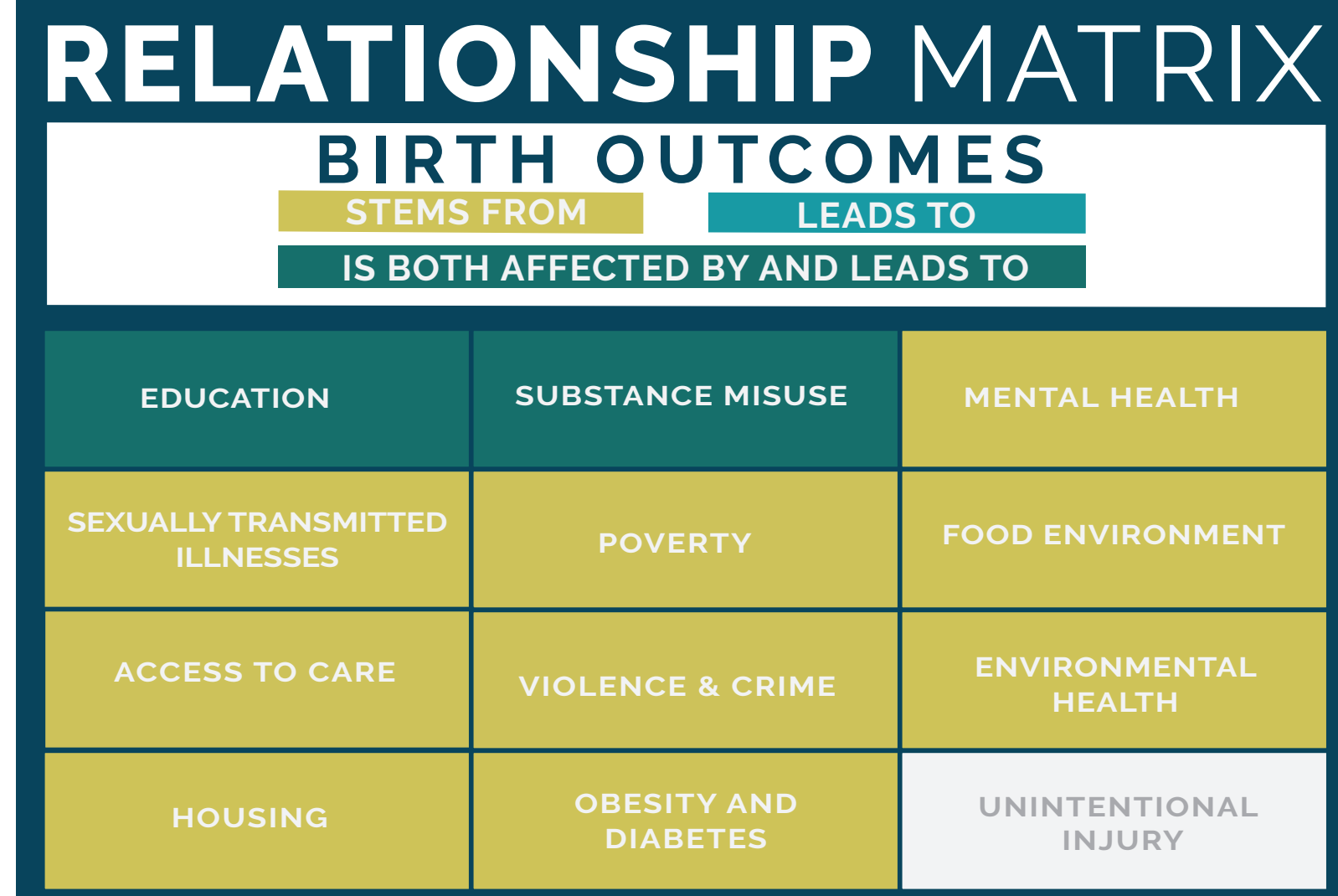


SOURCE: CDC WONDER INFANT DEATHS

RATE PER 1,000 LIVE BIRTHS

BIRTH OUTCOMES

BIRTH WEIGHT - INFANT MORTALITY
MATERNAL MORTALITY



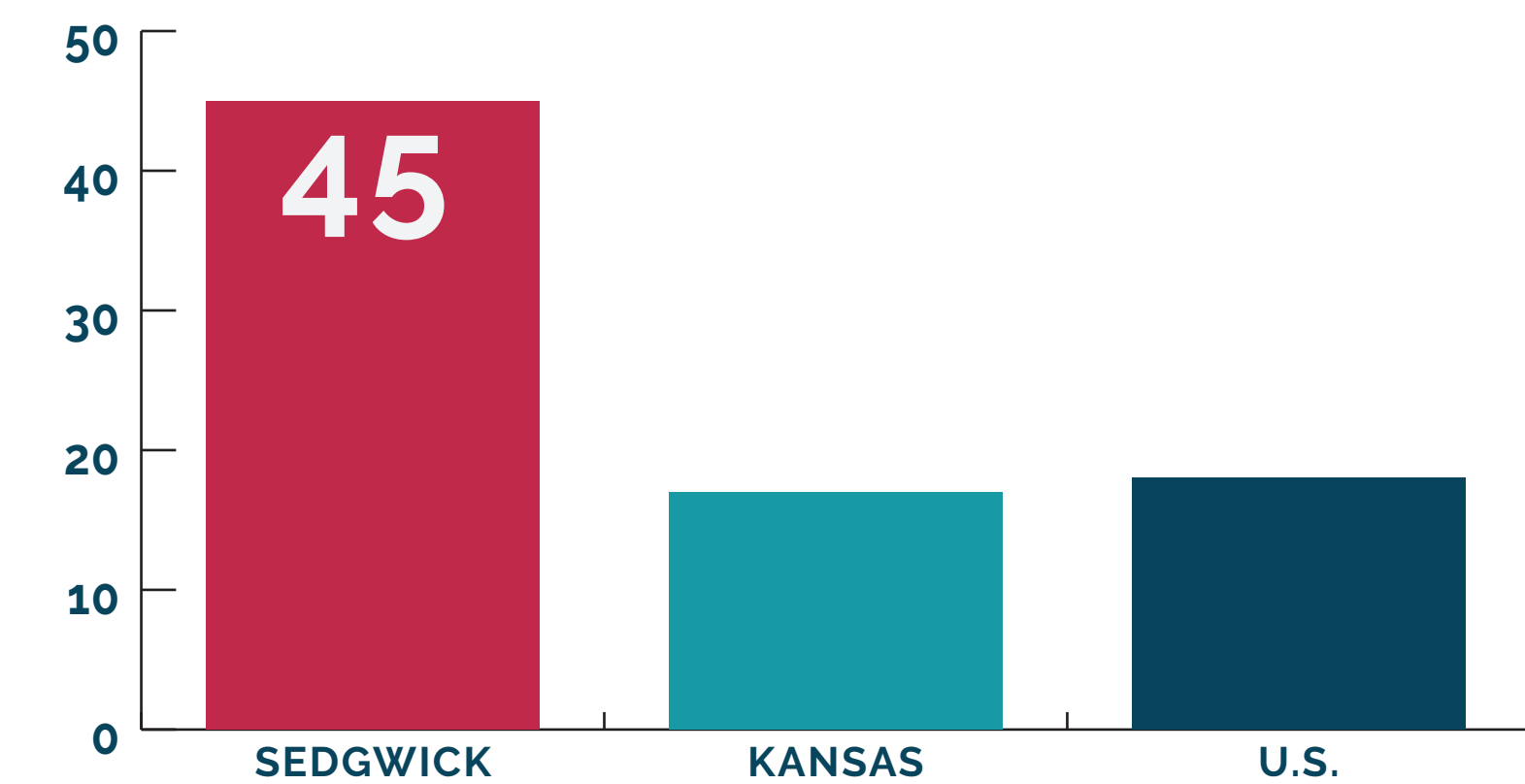
COMMUNITY VOICES

Excerpt from the Community Listening Session

Treehouse, Embrace, Healthy Babies, WIC are resources that have all come together. If it wasn't for them, I don't think I would have been able to get through this pregnancy

MATERNAL MORTALITY

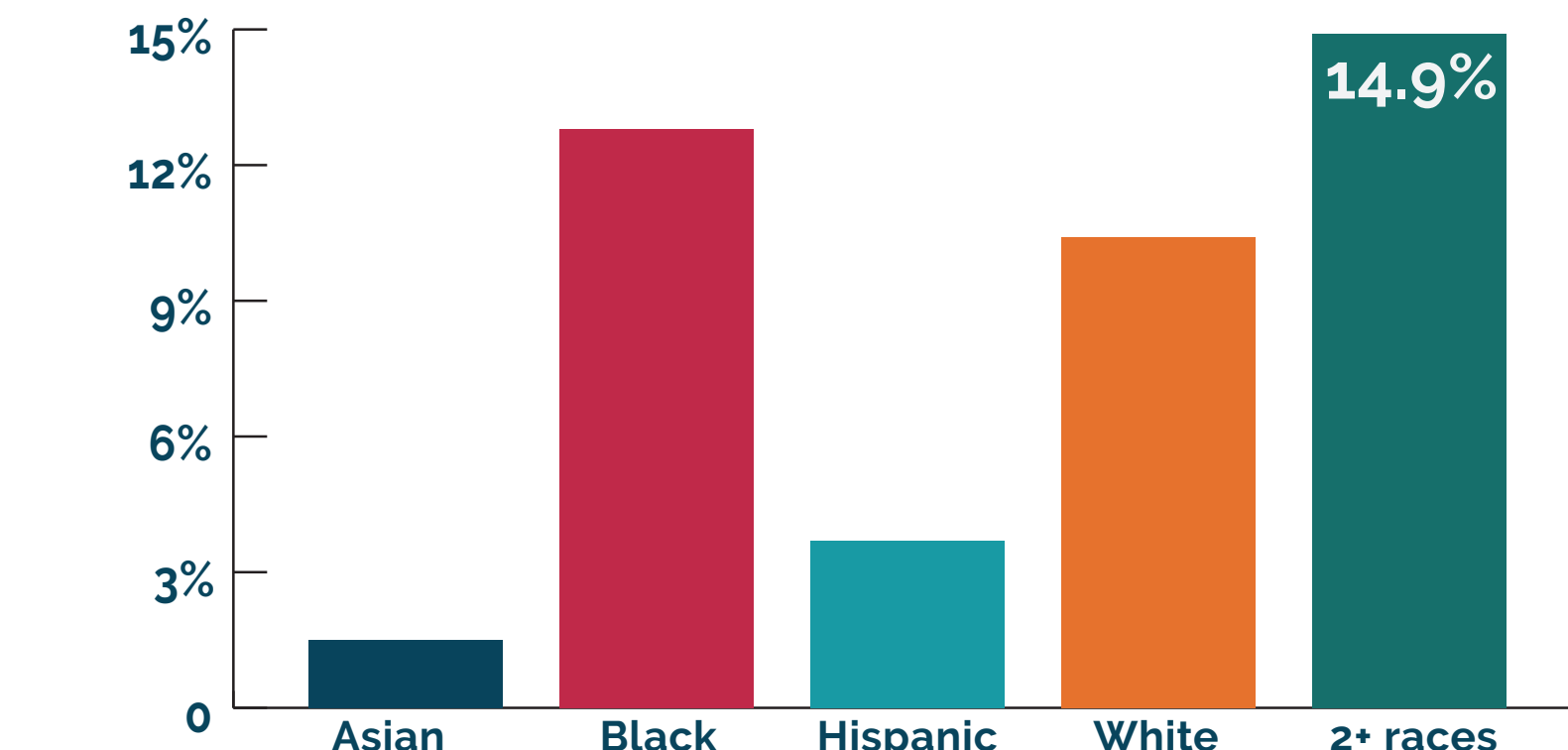
THE MATERNAL MORTALITY RATE PER 100,000 LIVE BIRTHS ROSE FROM 29 IN 2018 TO 45 IN 2019 IN SEDGWICK COUNTY



SOURCES: CDC WONDER NATALITY, KDHE, KMMRC (2019)

TOBACCO USE

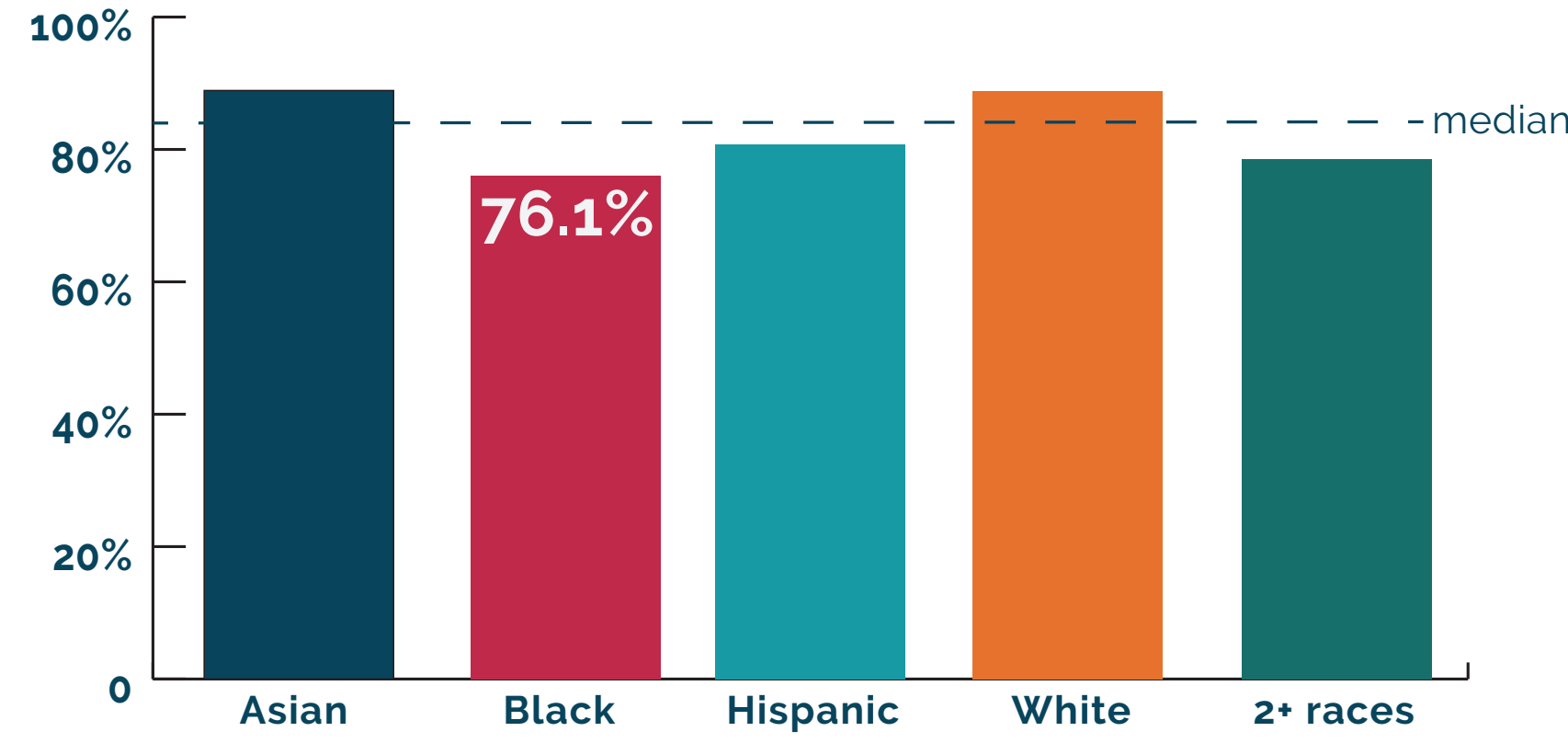
PERCENTAGE OF SEDGWICK COUNTY WOMEN WHO REPORTED SMOKING DURING PREGNANCY BY RACE/ETHNICITY



SOURCES: CDC WONDER NATALITY 2018-2020

HEALTH CARE EFFECTS

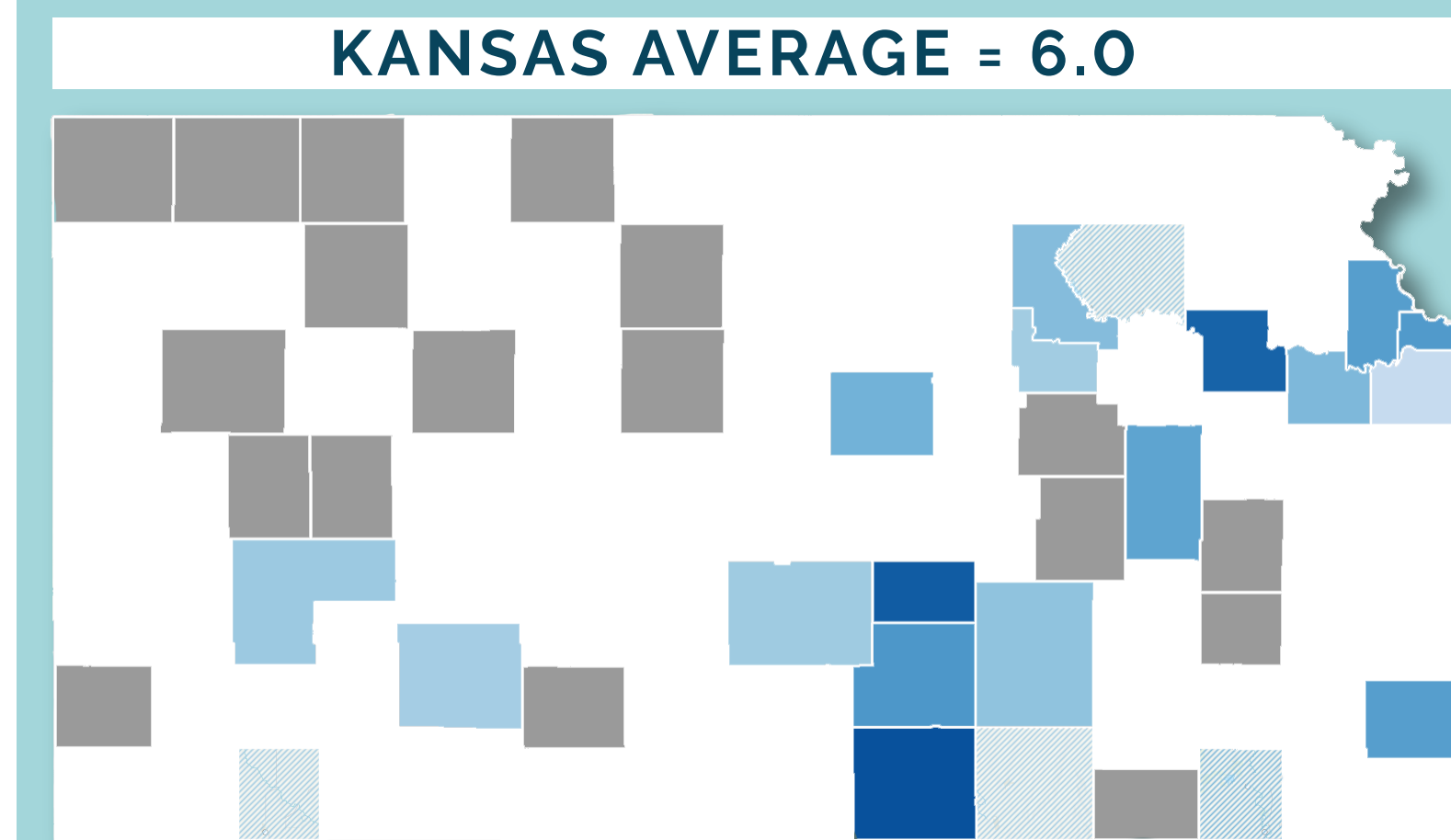
PERCENTAGE OF SEDGWICK COUNTY WOMEN WHO STARTED PRENATAL CARE IN THE FIRST TRIMESTER



SOURCE: CDC ACS (2020) - POPULATION: SEDGWICK COUNTY

COUNTIES

AVERAGE ANNUAL INFANT MORTALITY RATE PER 1,000 LIVE BIRTHS IN KANSAS OVER A 5-YEAR PERIOD



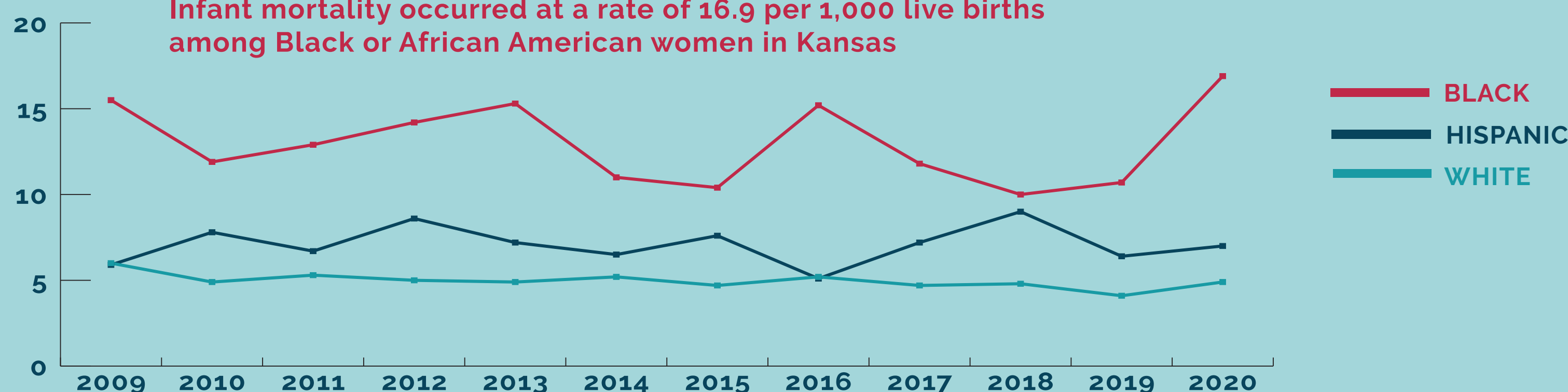
TOP 5 COUNTIES WITH THE HIGHEST INFANT MORTALITY RATE IN KANSAS

Rate	County
9.3	Sumner
9.0	Harvey
8.8	Shawnee
7.3	Sedgwick
7.2	Wyandotte

SOURCE: KDHE

INFANT MORTALITY

Infant mortality occurred at a rate of 16.9 per 1,000 live births among Black or African American women in Kansas



SOURCE: KDHE, KANSAS INFANT MORTALITY & STILLBIRTH REPORT, 2020

RACE/ETHNICITY

LOW BIRTH WEIGHT

Among the live births of Black or African American women in Sedgwick County, about 1 in 6 had a low birth weight

