

Community Emergency Response Team

Basic Training



FEMA

Brief History



- Born out of a two major earthquakes in Japan and Mexico City.
- 6.3 Japan Earthquake. 29 people died, 10 injured, land slides.
- 8.1 Mexico City Earthquake 1985, 10,000 died, 30,000 injured.
 - Over 100 untrained civilian rescuers lost their lives trying to help others.
 - They were acting organically to help their family members and their neighbors.
- Today there are 2800 active CERT programs in the United States including Chile, China, Mexico, Brazil, Canada, and Laos.



What is CERT in Sedgwick County?



Basic Training

- Train & Release
- Prepare individuals and families
- Education and skills to respond
- Build confidence and defines expectations
- Creates resiliency within your community
- May be requested as a reserve contingent in extreme situations

Advanced Team Training

- Advanced FEMA training
- Deployable Skills
- Organized volunteer team
- Response vehicles & Equipment
- Specially trained to supplement Professional Responders
- May be deployed out of county or State.



How does CERT work in Sedgwick County?



In the wake of disaster, 911 will be overwhelmed. It's likely you won't get through.

- How many homes affected?
- How many people injured, displaced?

Think about how many resources you have in your community.

- How many fire trucks does your city have?
- How many ambulances?
- Police?

How will CERT work in the system?

- Manage expectations
- Educated and prepared to sustain during a disaster.
- Provide life saving interventions and incident stabilization.
- Provide neighborhood triage info to professional responders.

We educate citizens to prepare themselves to be self-sufficient for 24-72 hours

- In a major disaster, utilities could be down for up to 14 days or even more. Fresh water sources and supplies could be down longer.
- Commercial services (gas stations, grocery) could be down for days, weeks, months.
- Infrastructure damaged including roads, bridges.





CERT Basic Training Weekend Schedule



Friday

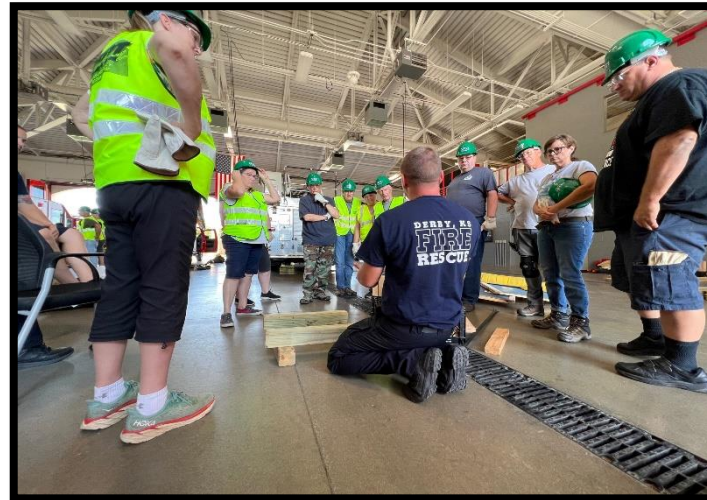
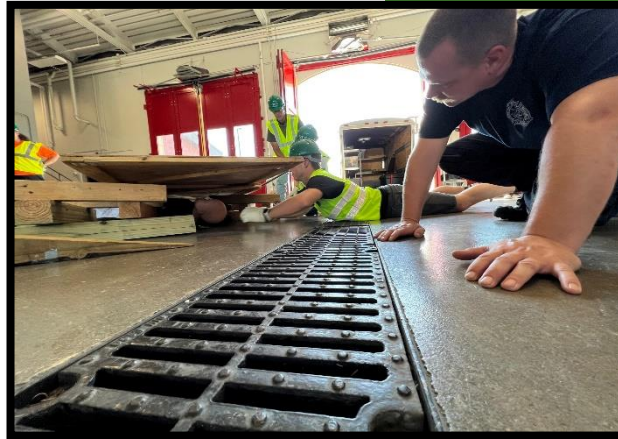
- 5:00pm Registration Opens
- 5:30pm Program Introduction
- 5:45pm Welcome, Housekeeping, Intros
- 6:15pm Emergency Management 101
- 7:00pm Disaster Preparation
- 8:00pm How CERT Works in Sedgwick County
- 8:45pm Fill out evaluations, talk about Saturday activities

Saturday

- 8:00am Sign-in opens
- 8:30am Fire Safety and Utility Controls (30 min slides, 40 min extinguishers)
- 9:40am Medical Ops 1 (105mins)
- (Break)
- 11:00am Terrorism (45 mins)
- 11:45am (Working Lunch) Disaster Psychology (45 mins)
- 12:30pm Medical Ops 2 (75 Mins)
- (Break)
- 2:00pm Search and Rescue (120 mins)
- 4:45pm Fill out evaluations, talk about Sunday's activities

SUNDAY

- 12:30pm Sign-ins open
- 1:00pm Question & Answers. Go over any issues or items requiring further explanation
- 1:30pm Exercise pre-brief and gear up
- 2:00pm Exercise Begins
- 4:00pm Debrief
- 4:45pm Certificates



Your Opportunity



- We are not going to show up in your city without your support or expressed desire. We can't/won't host a class without fire support.
- Most Fire Department's have school age education or school visits covered
- Few departments have an adult public education program
- CERT provides the opportunity for your cities fire chief's and emergency professionals to have face time with your residents and provide them with information you wished they knew
- It allows you to become familiar with what the program teaches them, their capabilities and the gap they can fill in those critical moments post disaster when we're trying to get ramped up
- Gives you an opportunity to recruit another volunteer pool.
- If you'd like to manage your Basic Training volunteers as a response team that's an option as well. Inherently, CERT is a force multiplier.



November Class



- Looking to hold a class in November. Max 30 people.
- Need local fire dept. support.
- Let us know if you're interested in bringing this program to your city?



CIVICREADY®

Receive notifications by

- Call
- Email
- Text
- And more

SIGN UP NOW



For one-step notifications
SIGN UP TODAY.
Get local news and alerts instantly.

CIVICREADY™

CIVICREADY®

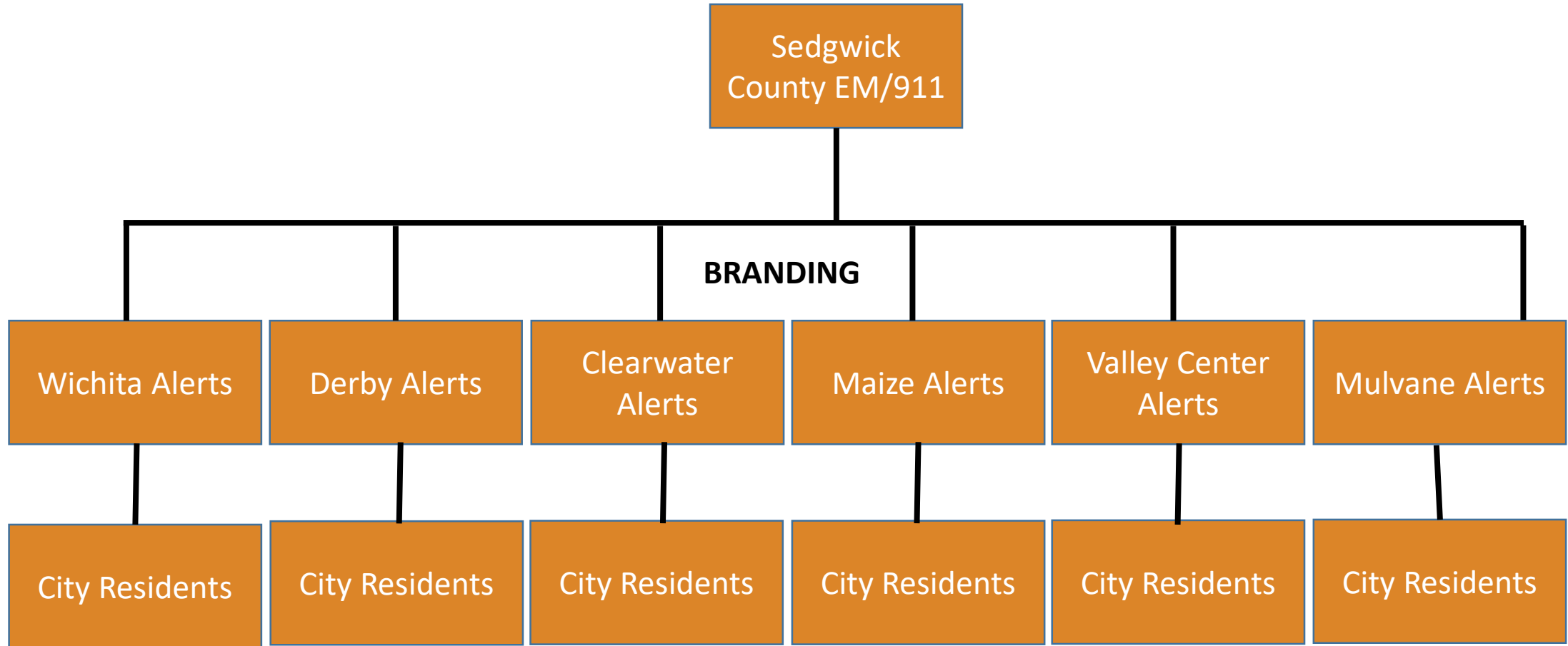
High-level overview, this will allow you to send alerts to your residents on an opt-in basis.

It will primarily be e-mail based, but you will have the ability to send text messages and voice calls for urgent communications.

Current model: Citizens can sign up for the following notifications:

- **Public Safety Alerts** (Police/Fire/EMS situations; may be sent via text and/or email)
- **Public Health Alerts** (Boil water advisories, epidemic news, vaccination locations, etc.; sent via text and/or email)
- **Community Bulletins** (Festival news, government office closures, local road closures, etc.; email only)
- ****We still are in the planning stage, so these categories are subject to revision.**

CIVICREADY[®]



CIVICREADY[®]

The screenshot displays the CIVICREADY web application interface. The main map shows a residential area with a cyan-colored polygon highlighting a specific region. The sidebar on the left contains the following sections:

- Areas:** A dropdown menu showing "Area 2" with "Selections: 54".
- Details:** A section for "Area 2" with a pencil icon for editing.
- Selections:** A list of user categories with counts and status indicators:
 - Internal User Locations: 0 (green checkmark)
 - myAlerts App Users: 1 (green checkmark)
 - Public User Locations: 0 (green checkmark)
 - White and Yellow Pages (Emergency Telephone Notification): 53 (green checkmark)
- Actions:** A section with buttons for "Zoom", "Buffer", "Edit", and "Remove".
- Summary:** "Areas Selected: 1" and "Approximate Selections: 54".
- Buttons:** "Close", "Save", and "Submit" buttons at the bottom.

The map interface includes a search bar, a "Draw" dropdown menu, and "Public User Locations" text. The map shows streets such as E Castle Dr, E Lincoln St, E Bayley St, E Zimmerly St, E Boston St, E Harry St, and S Woodlawn St. A scale bar indicates 200m and 600ft. The bottom right corner contains the text: "City of Wichita, Sedgwick County, Esri, HERE, Garmin, GeoTechnologies, Inc."

CIVICREADY[®]

Beta Testing in September with Mt. Hope & Wichita. Derby in October

After we work the kinks out we'll offer it up to all cities within Sedgwick County toward the end of Q4.

CIVICREADY[®]

Questions?