

# Behavioral Health Landscape in Sedgwick County

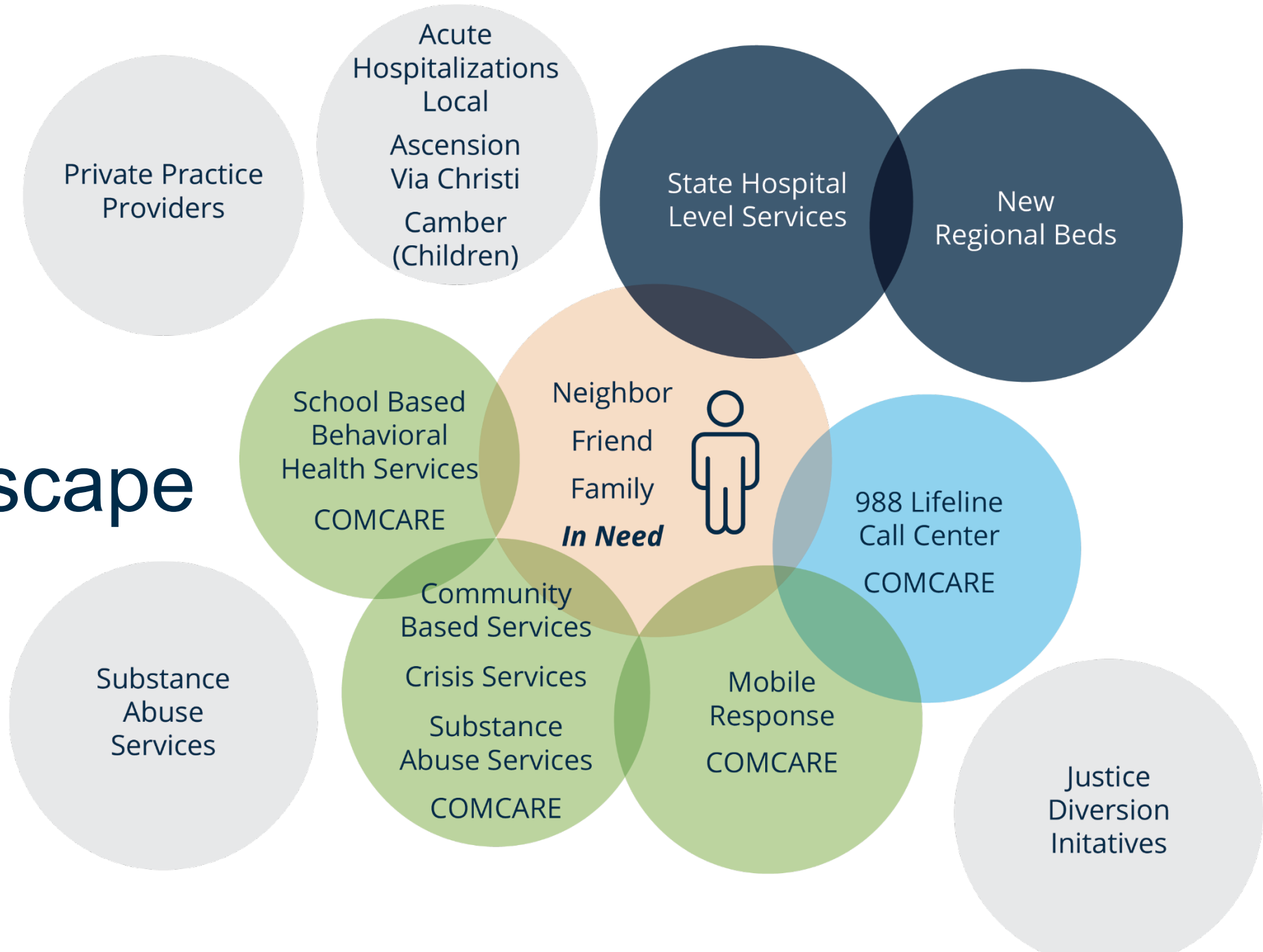
Tim Kaufman, Deputy County Manager

*Sedgwick County*

November 6, 2023



# The Landscape



# COMCARE and Community Based Services

## Certified Community Behavioral Health Clinic

- May 2021
- Legislatively supported
- Huge lift and incredible partnerships with KDADS/KDHE
- Full Certification visit: Nov. 27-Dec 1, 2024

## Licensed Community Mental Health Center

- Defined by Kansas Statute
- Kansas Department of Aging and Disability Services
- State responsibilities related to target populations and hospital screening function

## Certified Substance Use Treatment Provider

- Defined by Kansas Statute
- Kansas Department of Aging and Disability Services
- Focus – co-occurring SA and MH needs



# COMCARE and Community Based Services

*Over 60 year history as a CMHC serving needs of a broad range of community members providing safety net mental health services to all, without regard to their ability to pay.*

- Working in partnership and on behalf of the State of Kansas primarily with KDADS and KDHE.
- Designated Mental Health and Medicaid Authority for area.
- Serves Adult and Children target populations offering specialty services and delivers Crisis Services to all ages.
- Very large medication clinic with 19 prescribers including 8 Psychiatrists .



# Certified Community Behavioral Health Clinics

*COMCARE was in the first wave to receive preliminary certification in the spring of 2021.*

- Area of focus for CCBHCs includes:
  - Increased staffing to meet community needs.
  - Increased availability and accessibility to services.
  - Emphasis on care coordination to include social determinants of health.
  - Expanded scope of services including crisis services and evidence based models of care.
  - Quality measures and other reporting.
  - Broader governance model to include persons with lived experience.



# COMCARE Services for Youth

*Services designed for youth from pre-school age to 18 and beyond in some circumstances.*

- Assist youth to address problems related to their mental illness that impacts their success in school, the community or at home.
- Case management, medication management and individual and group therapy are examples of service.
- Mental Health Intervention Teams (MHIT) in partnership with schools in five different districts and field based staff working with students in almost every school in the county.
- Therapeutic early childhood team to help very young children succeed as they enter kindergarten.



# COMCARE Services for Adults

- **Addiction Treatment Services**  
Outpatient and intensive treatment services to help improve functioning and reduce their use of alcohol, drugs or problem gambling. Specializing in services for those with an addiction issue and a co-occurring mental illness.
- **Outpatient medication, individual and group therapy services to address mental illness.**
- **Community Support Services**  
Services to assist those diagnosed with a severe and persistent mental illness at greatest risk for hospitalization due to their mental illness. Services can include therapy, medication management, case management including community integration, supported employment, care coordination and other specialized services.



# COMCARE Crisis Services

*The COMCARE Community Crisis Center (CCC) is a 24-hour resource for mental health help and suicide prevention.*

- The crisis hotline and 988 call center prioritizes assessment and intervention for those who may be at risk for suicide and handle over 60,000 per year.
- Crisis staff complete about 75% of competency to stand trial evaluations for the Sedgwick County Detention Facility to assure persons can effectively participate in the legal process.
- Mobile Crisis continuum includes a number of different response models including mental health staff only, co-responder programs with law enforcement and paramedic and a new law enforcement alternative responder program.
- The CCC includes a 23 hour Crisis Observation Unit paired with sobering and detox services provided by partner agency Substance Abuse Center of Kansas (SACK) on site to address either or both issue at the time of crisis.
- Crisis Stabilization Unit (CSU) and Morris Place offer longer duration stays of up to 72 hours at the CSU and 4-14 or more days at Morris Place to allow for a community based non-hospital based level of care.





# COMCARE Hospital Screening Services

*COMCARE as the Community Mental Health Center performs screens necessary for state hospital admission.*

- Assessments occur through the CCC for those who present there, local hospitals can request an assessment for a higher level of care.
- Requests for mobile assessments may come from family members, law enforcement, correctional facilities, 911 and the community.
- 988 is the primary point of contact and initiation for screening services.
- If a determination for involuntary hospitalization is reached staff begin looking for state hospital or SIA placement.



**COMCARE**  
Community Crisis Center  
635 N. Main

# State Hospital screening diversion and outpatient services

- The goal is to serve people in the least restrictive setting and most assessments **do not** result in involuntary hospitalization.
- Diversion resources include the Crisis Observation and Crisis Stabilization units at COMCARE. The Patient Observation Unit at Ascension Via Christi St. Joseph campus, SACK detox and family members providing support.
- **88% of assessments in 2023 have resulted in diversion rather than an involuntary admission.**
- Most screened for hospitalization are not known to the COMCARE system or report receiving mental health services from any provider. Staff work to connect those persons to services based on needs, and resources.



# State Hospital Process

*For those needing State Hospital level care, COMCARE works with the court system to facilitate that process.*

- COMCARE staff work with hospitals regarding transportation to and from the state hospital.
- Hospital liaison staff coordinate services for discharging patients and have a weekly schedule to assist patient returning home.
- Goal is for a patient to have their next community based appointment within 72 hours, at COMCARE or with an existing treating provider.
- Prevention of a discharge to homelessness is a priority.



# Other Community Partners and Providers

- **COMCARE affiliate providers** – Mental Health Association, DCCCA, Pyxis.
- **Ascension Via Christi** – Local voluntary inpatient beds, State Hospital Initiative (SAI) beds, Patient Observation Unit.
- **Physical Health Safety net clinics** including FQHCs and Look alike – HealthCore, Hunter Health, Guadalupe. COMCARE/GraceMed colocation project.
- **Substance Abuse Center of Kansas** in partnership at the Community Crisis Center.
- **Private Practice and Primary Care providers** – over 200 in the county.
- **Housing and Homelessness Service Providers.**



# Partnerships

- At Sedgwick County, COMCARE is a part of the Division of Human Services and coordinates efforts with:
  - **The Department of Aging and Disabilities** serving older adults, persons with a physical or intellectual disability. This department also serves as the local Aging and Disability Resource Center.
  - **The Sedgwick County Health Department**, including a large Child and Maternal health program with a number of shared patients and program participants.
  - **Sedgwick County Emergency Communications** including a pilot program which embeds a trained COMCARE staff person in the 911 call center.
  - **Emergency Medical Services, Sedgwick County Fire District #1 and the Sheriffs Department.**
  - **Public Safety partners including Law Enforcement, Courts and Community Corrections.**



# Questions?

