

ADDENDUM NO. 1

Sedgwick County Project: Webb Road between 79th and 87th Streets South (R367)

The items contained herein now become a part of the referenced plans and specifications. Please read the following items and acknowledge receipt of this addendum on the Proposal Page Number P-1. NOTE: THIS ADDENDUM MUST BE ACKNOWLEDGED TO CONSTITUTE A VALID BID.

SPECS:

- Replace SOP-1 with SOP-1R: Update quantity for “Surfacing Material (AB-3) and add bid items “Entrance Pipe 5.1 Sq. Ft.) (RCPHE)” and “End Section (5.1 Sq. Ft.) (RCHE)” and update Set Prices to reflect updated KDOT Set Prices.
- Replace “General Notes GN-1 and 2” with “General Notes Revised GN-1R and 2R”. Please note paragraph “Right-of-Way Constraints”.

PLANS:

- Replace Sheet 5 with Sheet 5R. Additional Right-of-Way on the Left Side from the Holts.
- Replace Sheet 6 with Sheet 6R. Additional Right-of-Way on the Left Side from the Holts. Additional field entrance at Sta. 26+50 (Lt.)
- Replace Sheet 9 with Sheet 9R. Additional field entrance at Sta. 26+50 (Lt.)
- Replace Sheet 12 with Sheet 12R. Additional culverts at proposed field entrance at Sta. 26+50 (Lt.)
- Replace Sheet 13 with Sheet 13R. Additional culverts at proposed field entrance at Sta. 26+50 (Lt.)
- Replace Sheet 14 with Sheet 14R. Additional “Surfacing Material (AB-3)” at proposed field entrance at Sta. 26+50 (Lt.)

By: _____

Lynn T. Packer, P.E.

Director of Public Works/County Engineer

Date: December 1, 2023

SCHEDULE OF PRICES

Project: Webb Road between 79th and 87th Streets South(R367)

Type of Work: Grading, Surfacing, Subgrade Modification, Seeding, and Pavement Marking

Items	Approx. Quantity	Unit	Unit Price	Amount
Contractor Construction Staking	1	LSUM		
Mobilization	1	LSUM		
Removal of Existing Structures	1	LSUM		
Clearing and Grubbing	1	LSUM		
Common Excavation	5,275	C.Y.		
Common Excavation (Contractor Furnished)	347	C.Y.		
Compaction of Earthwork (Type B) (MR-90)	4,498	C.Y.		
Water (Grading) (Set Price)	1	MGAL	\$40.00	
Aggregate Base (Special)(5")	12,874	S. Y.		
Water (Aggregate Base)(Set Price)	1	MGAL	\$40.00	
Surfacing Material (AB-3)	162	TONS		
Plant Mix Asphalt Mixture-Commercial Grade (Base)(2 1/2")	1,994	TONS		
Plant Mix Asphalt Mixture-Commercial Grade (Surface)(1 1/2")	1,095	TONS		
Plant Mix Asphalt Mixture-Commercial Grade (Entrances)(Base)(6")	374	TONS		
Crossroad Pipe (3.0 Sq. Ft.) (RCPHE)	24	L. F.		
Crossroad Pipe (7.0 Sq. Ft.) (RCPHE)	60	L. F.		
Entrance Pipe (1.5 Sq. Ft.) (RCPHE)	322	L. F.		
Entrance Pipe (5.1 Sq. Ft.) (RCPHE)	84	L. F.		
Entrance Pipe (7.0 Sq. Ft.) (RCPHE)	36	L. F.		
End Section (1.5 Sq. Ft.) (RCHE)	18	EA.		
End Section (5.1 Sq. Ft.) (RCHE)	4	EA.		
End Section (7.0 Sq. Ft.) (RCHE)	4	EA.		
Resetting End Section (3.0 Sq. Ft.)(RCHE)	4	EA.		
Mailbox Installation (Set Price)	9	EA.	\$150.00	
Seeding	1	LSUM		
Temporary Seeding	1	LSUM		
Sediment Removal (Set Price)	1	C.Y.	\$50.00	
Temporary Berm (Set Price)	1	C.Y.	\$2.00	
Biodegradable Log (20")	2,720	L. F.		
Silt Fence	1,215	L. F.		
SWPPP	1	L.S.		
Water (Erosion Control) (Set Price)	1	MGAL	\$40.00	
Traffic Control	1	LSUM		
Thermoplastic Pavement Marking (White)(4") (0.090")	8,600	L. F.		
Thermoplastic Pavement Marking (Yellow)(4") (0.090")	1,070	L. F.		
Pavement Marking (Methyl Methacrylate)(White)(4")(0.090")	246	L. F.		
Pavement Marking (Methyl Methacrylate)(Yellow)(4")(0.090")	30	L. F.		
GRAND TOTAL				

In Words:

DOLLARS

Company or Firm Name

BY

TITLE

GENERAL NOTES (REVISED)

Winter Wheat Harvest

Working days may be suspended to accommodate the Winter Wheat Harvest Period on this project as provided in subsection 108.5d.(7) of Sedgwick County Division 100. This typically occurs in June.

Project Phasing

The project shall be constructed so that local access is provided at all times.

Right-of-Way Constraints

The County has acquired an additional ten feet (10') of right-of-way from Sta. 21+41 to Sta. 28+46 (Lt). The total right of way in this area on the left side is now 40'. The owner is harvesting some of the hedge trees in this area. Any trees remaining at the start of construction operations are to be cleared and grubbed by the Contractor.

Stormwater Pollution Prevention Plan

Sedgwick County will file a Notice of Intent with the Kansas Department of Health and Environment (KDHE) for authorization to discharge stormwater runoff from construction activities in accordance with the Kansas Water Pollution Control General Permit under the National Pollutant Discharge Elimination System (NPDES). A copy of the permit application and an erosion control layout will be provided to the Contractor.

The Contractor must develop and submit a project Stormwater Pollution Prevention Plan (SWPPP) as specified in Section 901 of the Kansas Department of Transportation Standard Specifications for State Road and Bridge Construction (Edition 2015).

Include in the project SWPPP:

- the SWPPP Inspection and Maintenance Report Forms;
- the Contractor's Erosion Control Site Plan;
- a copy of the Project Notice of Intent Form (NOI) for Stormwater Runoff from Construction Activities (included on the following pages).
- references to Contract Documents pertaining to temporary erosion and water pollution control. KDOT standard specifications, contractual special provisions and the policy on Storm Water Discharges can be found on the internet at www.ksdot.org.

As a minimum, include the following information in the Contractor's Erosion Control Site Plan:

1. The planned sequence of major construction activities.
2. Site maps showing the locations and devices to be used for the initial perimeter controls and for every phase of the project.
3. A detailed description of controls to be used including:
 - Stabilization practices for all areas disturbed by construction, including borrow locations;
 - Structural practices for all drainage/discharge locations; and
 - Other controls, including:
 - Waste disposal practices which prevent discharge of solid materials into water in the U.S. Also, see subsection 107.9d. of Sedgwick County Division 100;

- Methods of preventing contamination in areas designated for fuel and lubrication storage;
 - Actions to minimize offsite tracking of sediment by construction vehicles;
 - Actions to obtain compliance with state or local waste disposal, sanitary sewer or septic system regulations; and
 - When actions will be implemented, including permanent erosion control items when required in the Contract Documents.
4. Acknowledgment that State and Local requirements have been included in the SWPPP.
 5. Provide a Maintenance and Inspection Report.

Before the preconstruction conference, submit to the Engineer a minimum of 3 original copies of the SWPPP. No contract work may begin until the Engineer has approved the SWPPP.

NPDES Permitting

Transfer of Stormwater Discharge and Control Responsibility

Sedgwick County has submitted a Notice of Intent (NOI) to obtain a National Pollutant Discharge and Elimination System (NPDES) permit through KDHE for the Project. A Notice of Transfer of Owner/Operator (NOTO) will be provided by Sedgwick County and must be completed by the Contractor prior to the preconstruction meeting.

The original permit obtained by Sedgwick County will be for approximately 1 year. Per the NOTO form, “to continue coverage, the new permittee must assume the responsibility to pay the annual permit fee and continue to implement the Stormwater Pollution Prevention Plan (SWPPP) developed for the permitted area.” This will require the Contractor to pay the annual permit fee of \$60 with each permit renewal prior to its expiration. The permit does not cover Contractor borrow or waste sites adjacent to or in the vicinity of the Project.

Per KDHE’s NPDES General Permit, the permittee “shall ensure the entire construction site...is inspected on a regular schedule and within 24 hours of the end of a precipitation event which results in precipitation of 0.5 inches or greater. Regularly scheduled inspections shall at a minimum be once every 14 days.” Upon completion of the NOTO, the Contractor becomes the permittee and thus required to meet the requirements of the General Permit including performing the required inspections. Sedgwick County will be inspecting the site’s BMPs every 14 days and following rain events; the Contractor may incorporate these inspections into the SWPPP at his option.

Any costs associated with permit fees, contractor site inspections and updates/revisions to SWPPP documentation shall be SUBSIDIARY to erosion control bid items.

The Contractor shall submit a Notice of Termination (NOT) to KDHE to terminate permit coverage when soil disturbing activities are complete and final stabilization in all disturbed areas has been achieved. The project is considered to be stabilized when perennial vegetation, pavement and structures cover all areas which have been disturbed. Vegetation must have a density of at least 70 percent of the density of undisturbed areas at or near the site. If Final Acceptance is issued prior to final stabilization of all disturbed areas, the Contractor shall complete a NOTO to transfer the permit to Sedgwick County.

COUNTY	STATE	PROJECT NUMBER	FISCAL YEAR	SHEET NO.	TOTAL SHEETS
SEDGWICK	KANSAS	R367	2023	5R	57

REVISED PLANS

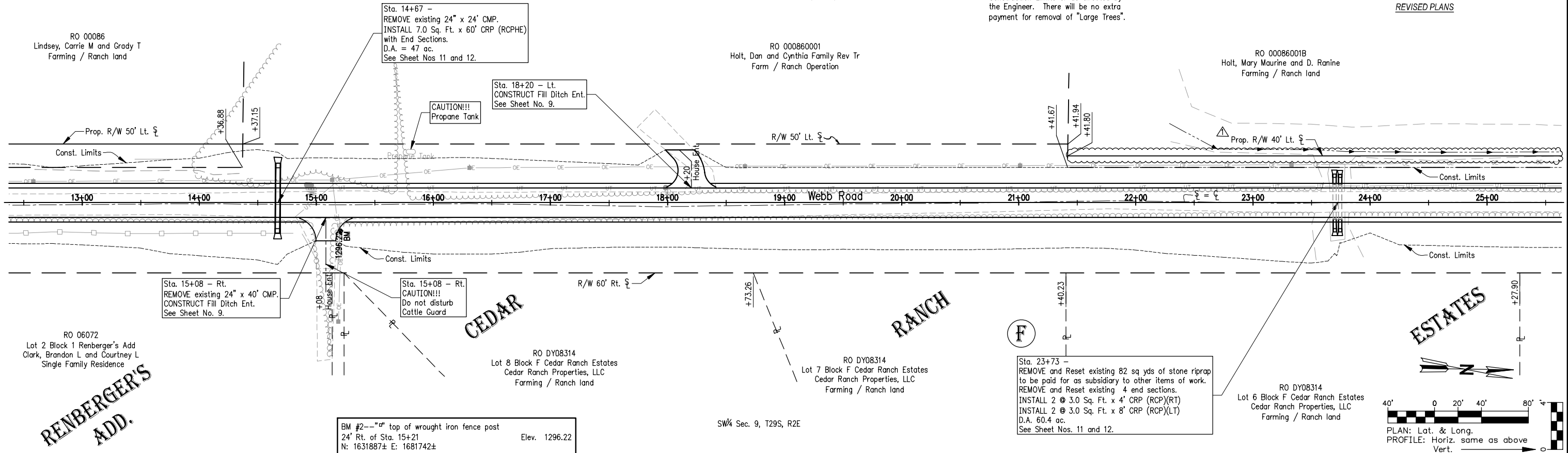
NOTE: The Contractor shall clear the trees and brush from within the Construction Limits or as directed by the Engineer. There will be no extra payment for removal of "Large Trees".

SE¼ Sec. 8, T29S, R2E

RO 00086001
Holt, Dan and Cynthia Family Rev Tr
Farm / Ranch Operation

RO 00086001B
Holt, Mary Maurine and D. Ranine
Farming / Ranch land

RO 00086
Lindsey, Carrie M and Grady T
Farming / Ranch land

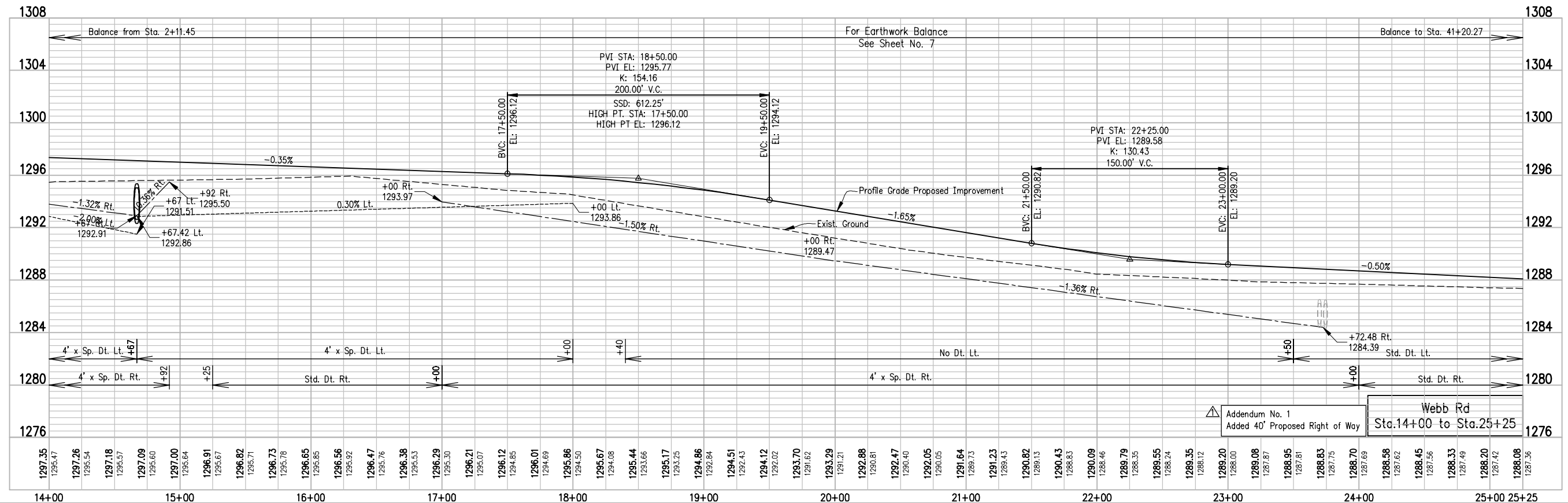


BM #2--" top of wrought iron fence post
24' Rt. of Sta. 15+21
N: 1631887± E: 1681742±
Elev. 1296.22

(F)

SW¼ Sec. 9, T29S, R2E

Device: AutoCAD PDF (General Documentation).pc3 Page Setup: HP T2300 36x22 Mono By: Cater, Paul D. C:\Projects\R367\367-Webb Rd-PP-2.dwg Layout: R367-Webb Rd-PP-2 Plotted: 12/1/2023 7:49 AM



Addendum No. 1
Added 40' Proposed Right of Way

Webb Rd
Sta. 14+00 to Sta. 25+25

Device: AutoCAD PDF (General Documentation).pc3 Page Setup: HP T2300 36x22 Mono By: Cater, Paul D. O:\Projects\R367\R367-Webb Rd-PP-3.dwg Layout: R367-Webb Rd-PP-3 Plotted: 12/1/2023 7:49 AM

SE 1/4 Sec. 8, T29S, R2E

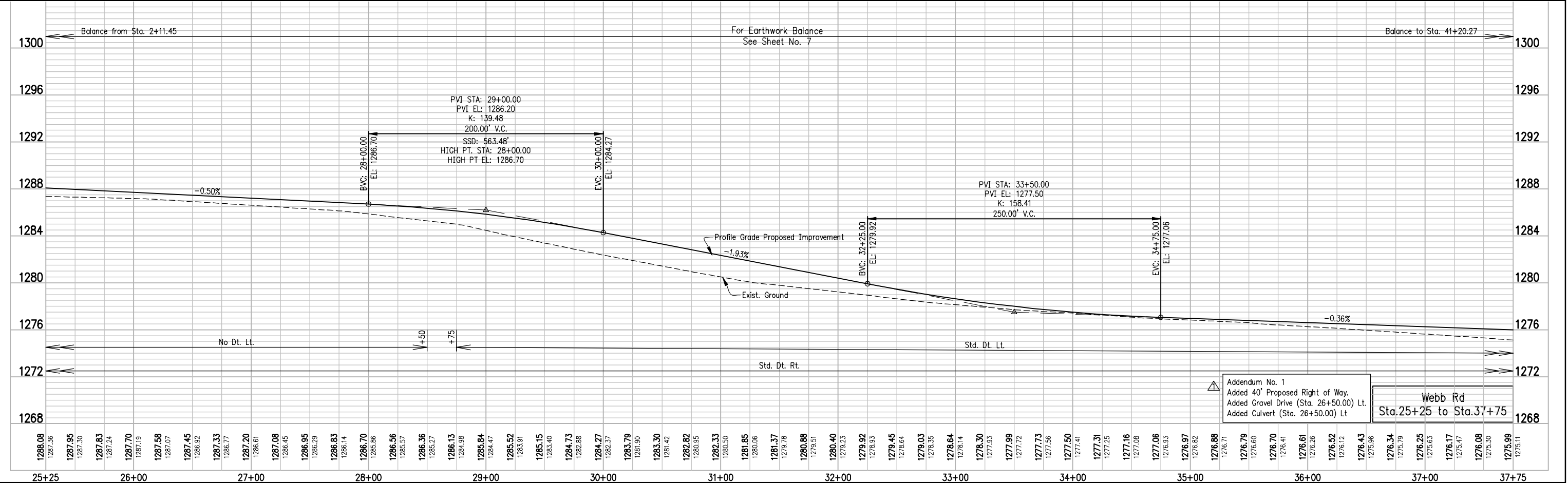
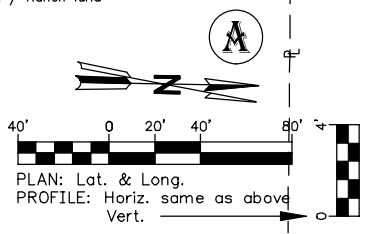
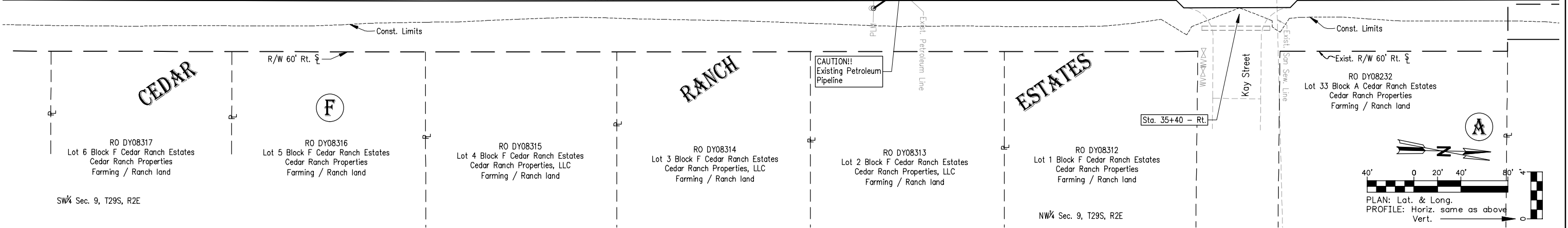
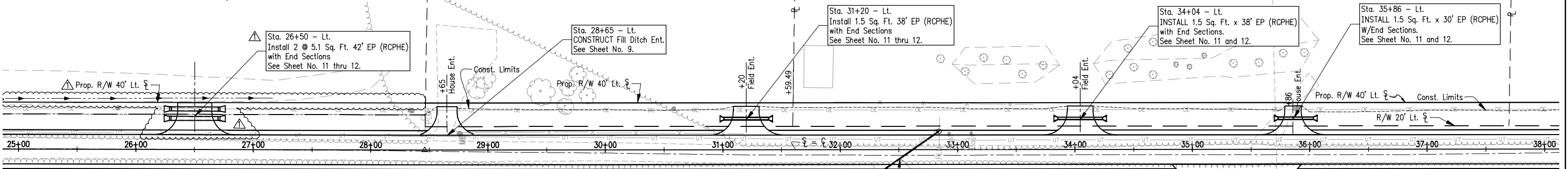
W 1/4 Cor. Sec. 9, T29S, R2E (Rockford)

NE 1/4 Sec. 8, T29S, R2E

COUNTY	STATE	PROJECT NUMBER	FISCAL YEAR	SHEET NO.	TOTAL SHEETS
SEDGWICK	KANSAS	R367	2023	6R	57

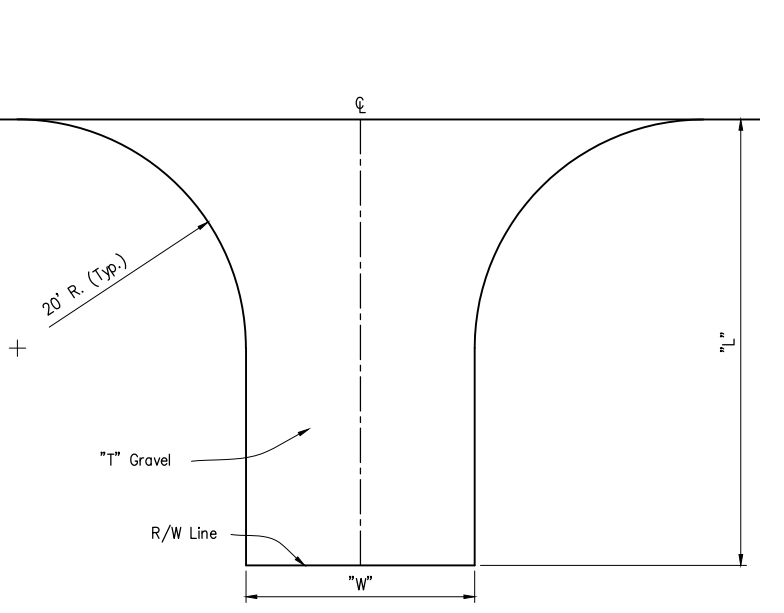
REVISED PLANS

NOTE: The Contractor shall clear the trees and brush within the Construction Limits or as directed by the Engineer. There will be no extra payment for removal of "Large Trees".

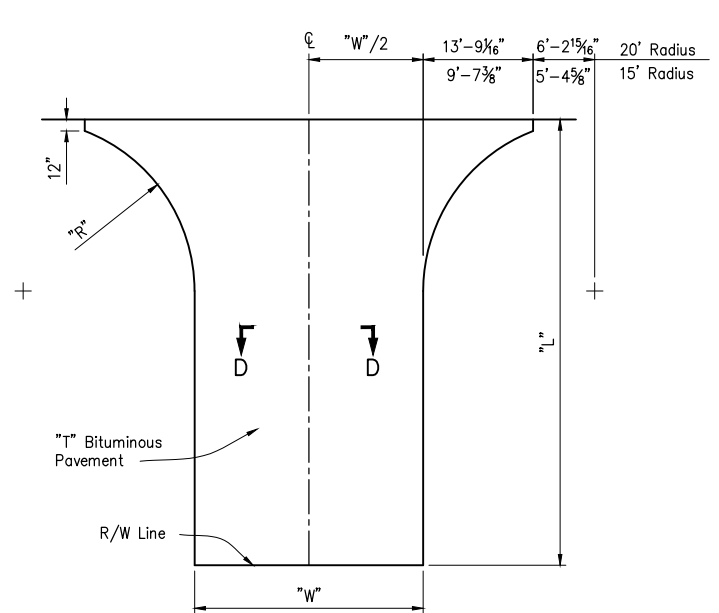


Device: AutoCAD PDF (General Documentation).pc3 Page Setup: 5500, 11x17 Mono By: Cater, Paul D. C:\Projects\R367\Entrance Details.dwg Layout: Entrance Details Plotted: 12/1/2023 7:51 AM

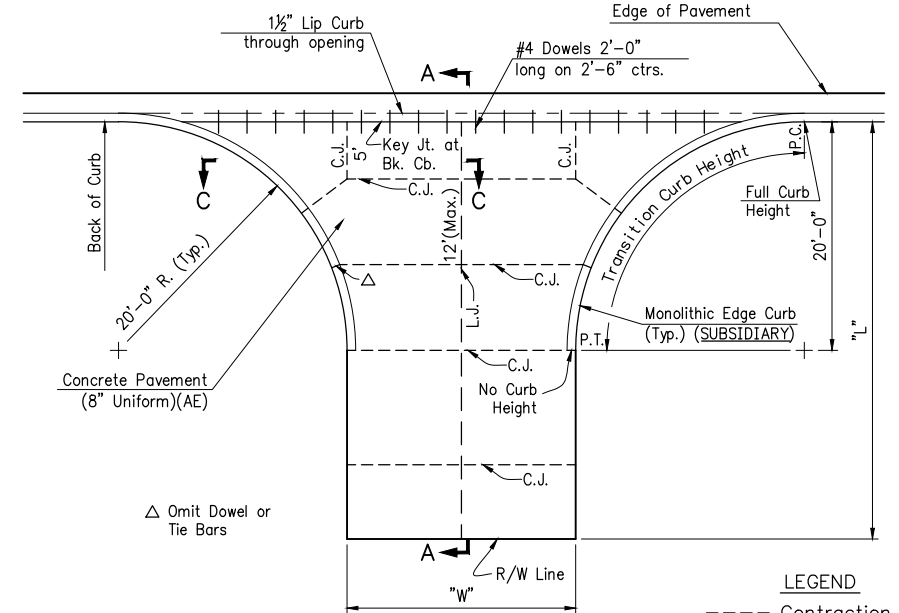
COUNTY	STATE	PROJECT NUMBER	FISCAL YEAR	SHEET NO.	TOTAL SHEETS
SEDGWICK	KANSAS	R367	2022	9R	57



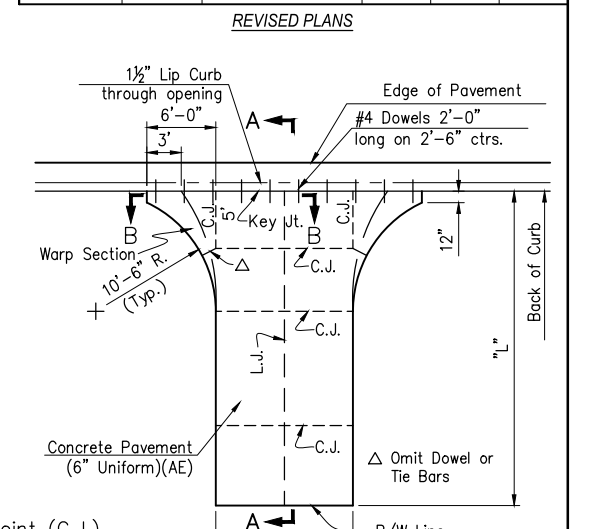
PLAN (TYPE IV)



PLAN (TYPE III)



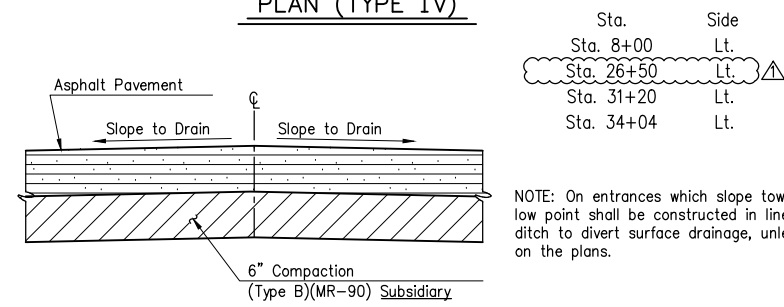
PLAN (TYPE II)



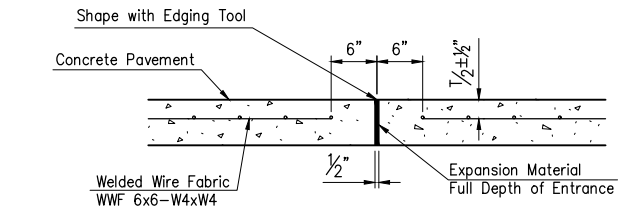
PLAN (TYPE I)

LEGEND
 - - - - - Contraction Joint (C.J.)
 - - - - - Longitudinal Joint (L.J.)

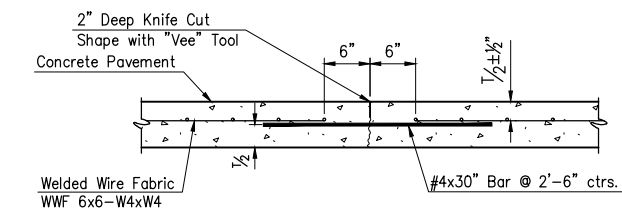
NOTE: See "Summary of Quantities" sheet No. 11 for entrance drive dimensions and quantities.



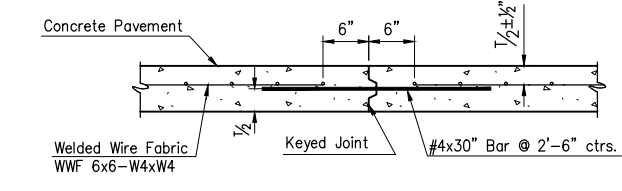
SECTION D-D



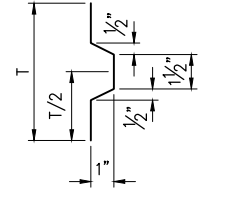
EXPANSION JOINT (E.J.)



CONTRACTION JOINT (C.J.) or LONGITUDINAL JOINT (L.J.)



ALT. LONGITUDINAL CONSTRUCTION JOINT



KEY WAY DETAIL

Notes for Concrete Entrances:

Grade 3.0 Concrete (AE) shall be used for Concrete Entrances. On concrete pavement projects, the Contractor may substitute the mix used in concrete pavement.

One longitudinal joint shall be constructed along the centerline of entrances having a "W" of 24' or less. Longitudinal joints shall be constructed at equal spacing not to exceed 10' for entrances having a "W" greater than 24'. The placement of these joints should aid in guiding vehicles entering and leaving the entrance.

Expansion and construction joints shall be constructed at equal spacing not to exceed 12'. Expansion joints shall be 5" of preformed Expansion Joint Filler (Nonextruding, Type B) and 1" of Hot or Cold poured Joint Sealing Compound.

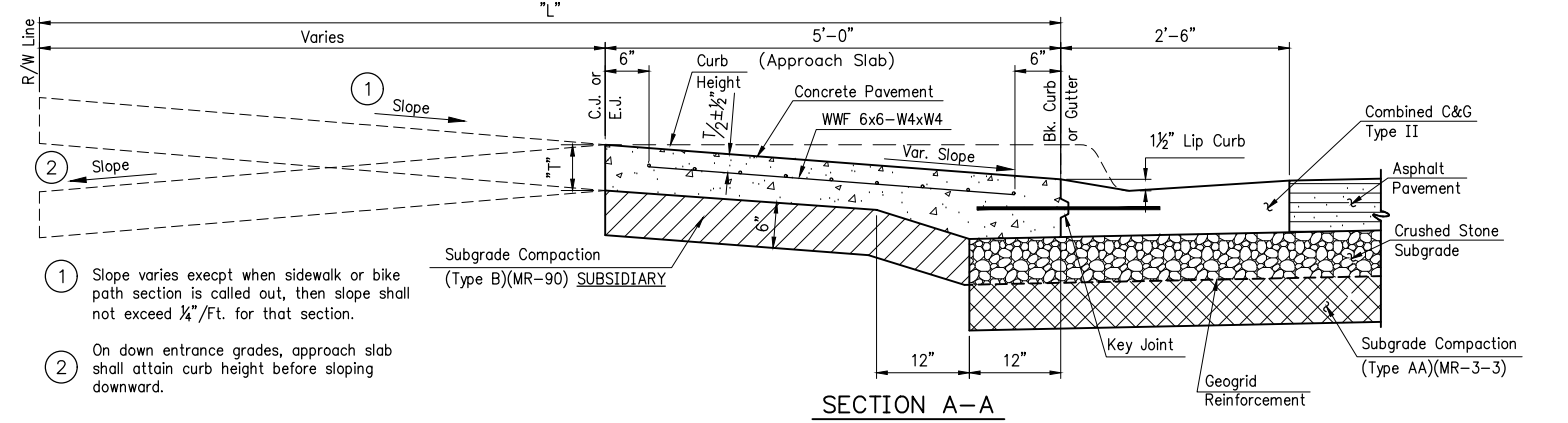
One-half inch expansion joints shall be installed wherever drive construction abuts sidewalk or bike path. One-half inch expansion joints shall also be installed along the property line and/or back of walk line when drive construction along this line abuts concrete parking lots or concrete drive extension.

Dowel bars shall be omitted from the keyed construction joint along the back of curb when driveways are constructed in conjunction with new concrete pavement construction.

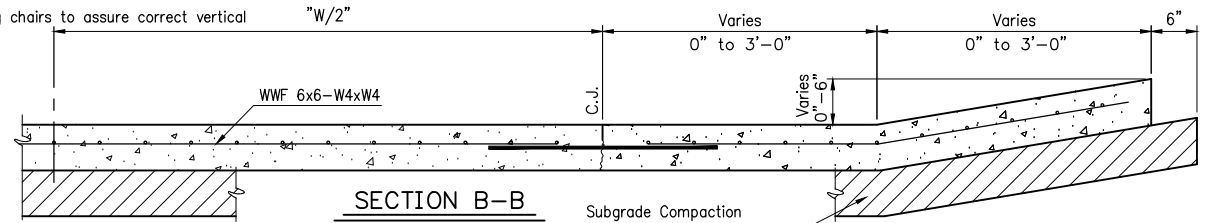
All entrances shall be a minimum of 6" in thickness and shall be reinforced with WWF 6x6-W4xW4.

Welded wire reinforcement and/or tie bars shall be placed using chairs to assure correct vertical placement.

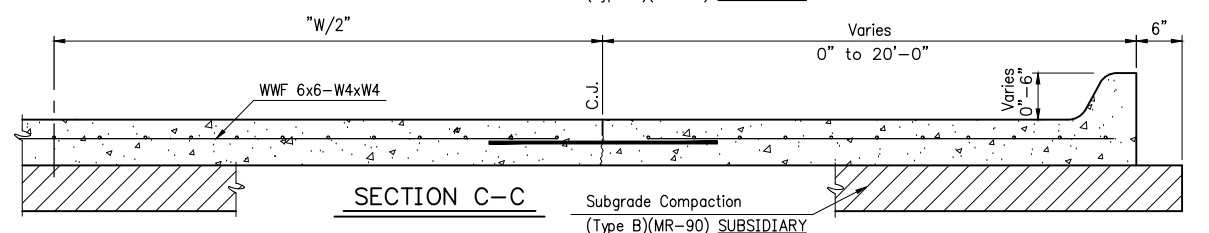
NOTE: All entrance side slopes shall be 6:1 or flatter. The Contractor shall backfill around the edges of all pavements with suitable soil material as directed by the Engineer.



SECTION A-A



SECTION B-B

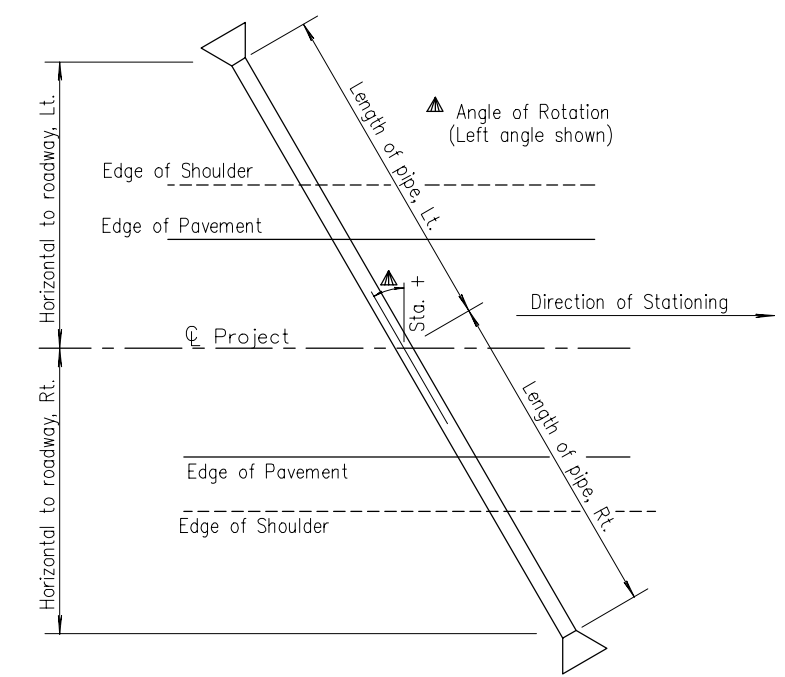


SECTION C-C

11/30/2023		Add entrance at Sta. 26+50		P. C./
Webb Rd. from 87th St. S. to 3/4 Mile North				
ENTRANCE DETAILS				
PREPARED BY SEDGWICK COUNTY PUBLIC WORKS HIGHWAY DEPARTMENT				
LYNN T. PACKER, P.E.		DIRECTOR/COUNTY ENGINEER		
SCALE	DESIGNED	DRAWN	CHECKED	SHEET NO.
NONE	L.T.P.	D.R.S.	L.T.P.	9R
DATE	8/2006	9/2009	9/2009	
DWG: Entrance Details				

STATE	PROJECT NUMBER	FISCAL YEAR	SHEET NO.	TOTAL SHEETS
KANSAS	R367	2023	12R	57

REVISED PLANS



PLAN
(Showing Rotation about C)

PIPE CULVERT SUMMARY																						
Station	Side	Type	Size or Bid Designation Sq. Ft.	Crown Grade Elev.	Flow Line *		Floor Elev.		Horizontal Roadway		Degree of Rotation	Length of Pipe		Lin. Ft. of Pipe	Height of Fill (Max.) Ft.	Concrete Pipe AASHTO Class No.	Pipe Gauge		Pipe Corrugations		Remarks	
					Lt.	Rt.	Lt.	Rt.	Lt.	Rt.		Lt.	Rt.				Steel	Alum.	Steel	Alum.		
4+82	Rt.	EP (RCPHE)	1.5 Sq. Ft.	--	1314.12	1315.08			-	-	0			38'		III						
6+28	Rt.	EP (RCPHE)	1.5 Sq. Ft.	--	1310.12	1310.89			-	-	0			30'		III						
8+00	Lt.	EP (RCPHE)	1.5 Sq. Ft.	--	1305.26	1306.36			-	-	0			38'		III						
14+67	CL	CRP (RCPHE)	7.0 Sq. Ft.	--	1289.40	1290.85			16.5	16.5	0			60'		III						
23+73	CL	CRP (RCPHE)	3.0 Sq. Ft.	--	1284.45	1284.70			16.5	16.5	0			24'		III						Remove and Reset End Sections
26+50	Lt.	EP (RCPHE)	2 @ 5.1 Sq. Ft.	--	1283.70	1283.20			-	-	0			84'		III						
31+20	Lt.	EP (RCPHE)	1.5 Sq. Ft.	--	1279.97	1279.01			-	-	0			38'		III						
34+04	Lt.	EP (RCPHE)	1.5 Sq. Ft.	--	1275.03	1274.71			-	-	0			38'		III						
35+86	Lt.	EP (RCPHE)	1.5 Sq. Ft.	--	1274.17	1274.07			-	-	0			30'		III						
39+29	Rt.	EP (RCPHE)	7.0 Sq. Ft.	--	1271.37	1270.71			-	-	0			36'		III						
39+38	Lt.	EP (RCPHE)	1.5 Sq. Ft.	--	1273.08	1272.94			-	-	0			32'		III						
44+47	Lt.	EP (RCPHE)	1.5 Sq. Ft.	--	1272.03	1272.18			-	-	0			42'		III						
45+66	Lt.	EP (RCPHE)	1.5 Sq. Ft.	--	1272.40	1272.52			-	-	0			36'		III						

- Unless otherwise noted, minimum pipe gauge & corrugations to be as shown in RD660. See Summary of Quantities for End Section information.
- * Only include floor elevations for embedded pipes. See RD668 for details. For structures not embedded, the floor elevations may be omitted.

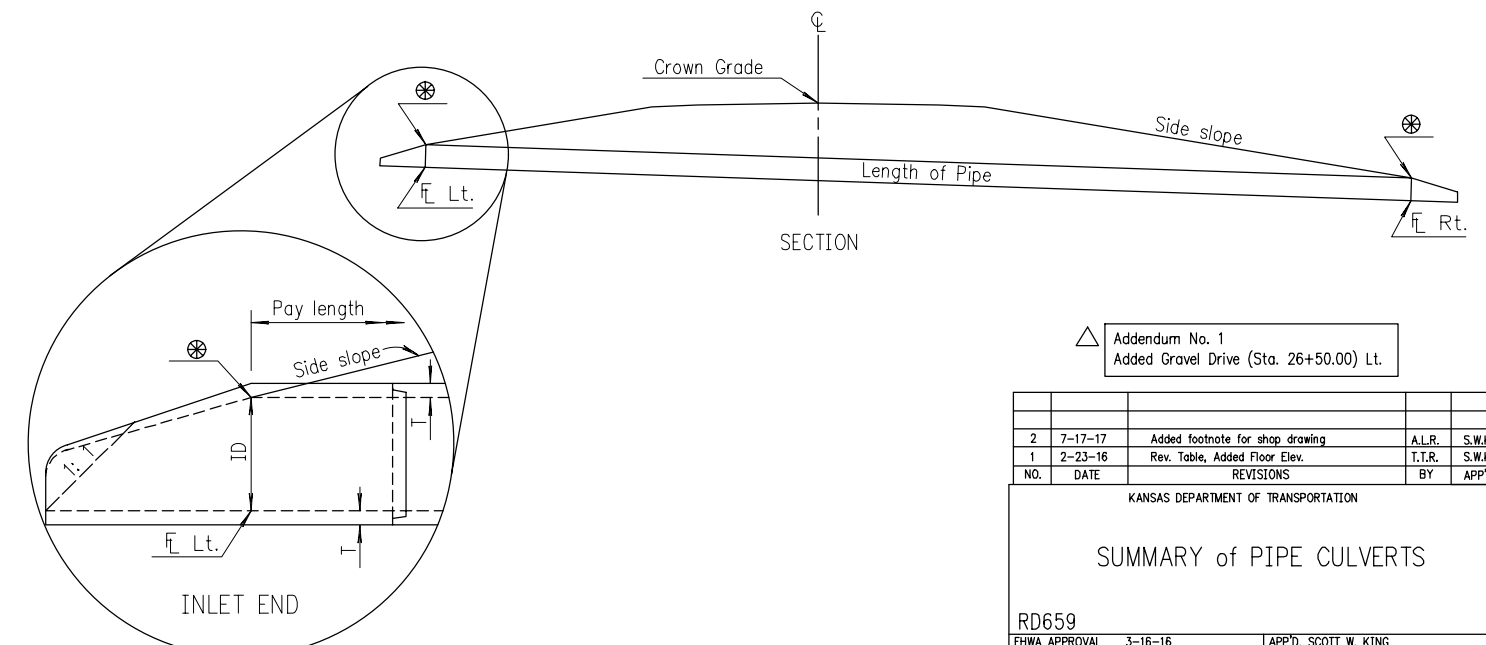
⊗ Design side slope to intersect inside diameter of pipe outside of Clear Zone.

Type	ALLOWABLE LOCATION ▲				
	Mainline	Side Road	Entrance	STORM SEWER	
				Under ML	Not Under ML
☆ PVCPC					
■ PEP					
CSP					
ACSP					
CAP					
RCP	X	X	X	X	X

- ☆ When inside diameter of pipe is 36" or less.
- ▲ Unless otherwise specified in the plans. Some pipe types may not be allowed at a location if the fill height exceeds the maximum allowable or is less than the minimum allowable cover.
- When inside diameter of pipe is 60" or less.

Type	ALLOWABLE END SECTIONS			
	◆ CS	◆ ACS	CA	RC
PVCP				
PEP				
RCP				X
ACSP	Provide End Section of the same material and coating type as the pipe.			
CAP	Provide End Section of the same material and coating type as the pipe.			
CSP	Provide End Section of the same material and coating type as the pipe.			

◆ Type IV End Sections are only made of CS or ACS.



▲ Addendum No. 1
Added Gravel Drive (Sta. 26+50.00) Lt.

NO.	DATE	REVISIONS	BY	APP'D
2	7-17-17	Added footnote for shop drawing	ALR.	S.W.K.
1	2-23-16	Rev. Table, Added Floor Elev.	T.T.R.	S.W.K.

KANSAS DEPARTMENT OF TRANSPORTATION

SUMMARY of PIPE CULVERTS

RD659

DESIGNED	3-16-16	APP'D	SCOTT W. KING
DESIGN CK.	DETAILD	QUANTITIES	TRACED
	DETAIL CK.	QUAN. CK.	TRACE CK.

Note to Designer: KDOT Pipe Policy provides guidance in identifying the prohibited and/or restricted uses of CSP, ACP, PEP, PVCPC, CAP & RCP. Provide end sections of the same type and coating as the pipe. Exceptions to this are noted in the Standard Specifications. Refer to the KDOT Design Manual, Volume I (Part C), Road Section, "Elements of Drainage & Culvert Design" for structural pipe design information which includes: corrugations, sizes, gauges, maximum/minimum fill heights and classes of pipe.

Drawn By: J. B. ...
 File: RD659 Plotted: 12/1/2023

COUNTY	STATE	PROJECT NUMBER	FISCAL YEAR	SHEET NO.	TOTAL SHEETS
SEDGWICK	KANSAS	R367	2023	13R	57

REVISED PLANS

REMOVAL OF EXISTING STRUCTURES			
STATION	SIDE	SIZE	ITEM
2+24	Rt.	235'	Fence
4+82	Rt.	18"	CMP
5+08	Rt.	112'	Fence
5+57	Rt.		Mailbox
6+27	Rt.	18"	CMP
6+67	Rt.	846'	Fence
14+67	CL.	24"	CMP
14+94	Lt.		Mailbox
14+95	Lt.		Mailbox
14+96	Lt.		Mailbox
15+08	Rt.	24"	CMP
15+18	Rt.	1980'	Fence
17+98	Lt.		Mailbox
28+44	Lt.		PLM
28+74	Lt.		Mailbox
28+77	Lt.		Mailbox
28+77	Lt.	240'	Fence
31+70	Lt.	550'	Landscape Rock in Tree line
32+28	Rt.		PLM
32+84	Lt.		PLM
32+92	Lt.		Post
33+11	Lt.		Post
37+60	Rt.	157'	Fence
39+17	Lt.		Mailbox
39+29	Rt.	36"	CMP
39+38	Lt.	12"	RCP
39+41	Rt.	181'	Fence
44+75	Rt.	261'	Fence

MAILBOX INSTALLATION*	
STATION	SIDE
5+05	Rt.
6+45	Rt.
14+91	Lt.
14+93	Lt.
14+95	Lt.
17+92	Lt.
28+75	Lt.
39+18	Lt.
44+47	Lt.

* For information only.

AGGREGATE BASE (SPECIAL)					
STATION TO STATION	ROADWAY	SIDE	AGGREGATE BASE (5") (S.Y.)	GEOGRID REINFORCEMENT (FOR BASE)* (S.Y.)	REMARKS
2+11.45	41+20.27	Webb Road	CL	11813	11813
42+42.74	46+10	Webb Road	CL	1061	1061
TOTALS				12,874.0	12,874.0

* For information only. Geogrid is included in the bid item "Aggregate Base (Special) (5)".

SUMMARY OF EARTHWORK QUANTITIES											
STATION TO STATION	EXCAVATION						COMPACTION (IN FILL)			WASTE ψ	
	COMMON		CONTRACTOR FURNISHED		ROCK		TYPE B (MR-90)	TYPE AA (MR-3-3)	COMMON	ROCK	
	C.Y.	V.M.F.	C.Y.	V.M.F.	C.Y.	V.M.F.	C.Y.	C.Y.	C.Y.	C.Y.	
2+11.45	41+20.27	4622	0.80	983	0	0	0	4484	0	0	0
42+42.74	46+10	653	0.80	-636	0	0	0	14	0	0	0
TOTALS		5,275		347		0		4,498	0	0	0

ψ For information only.

EARTHWORK NOTES

Quantities shown for "Common Excavation" are for excavation within the project limits. The Rock Excavation quantities are for the removal of existing asphalt pavement. The Rock Excavation quantities are not calculated separately and are considered subsidiary to the "Common Excavation" bid item. The Contractor shall remove and dispose of any existing pavement at no additional expense.

No separate measurement or payment will be made for initial consolidation and settlement. Additionally, no separate measurement was made for compaction of earthwork in cut areas outside the roadway. These items shall be SUBSIDIARY to other earthwork bid items.

The Contractor shall place 6" of top soil in all areas to be seeded. This material shall be obtained by striping soil from within the construction limit and shall be free of rocks, rubble, trash and other foreign or toxic material and shall be capable of supporting vegetation. No separate measurement or payment will be made for placing topsoil on this project.

Double handling of material stockpiled, over excavation and placement of material through cuts and over excavation and replacement of material to the original ground line through fills is not quantified and shall be SUBSIDIARY to other earthwork bid items.

This project will not include payment for overhaul. Stockpiling of excavated material due to staged construction and/or double handling of excavated material required to complete the embankment will not be paid for separately, but shall be SUBSIDIARY to other earthwork bid items.

RECAPITULATION OF ROAD QUANTITIES		
ITEM	QUANTITY	UNIT
Contractor Construction Staking	1	Lump Sum
Mobilization	1	Lump Sum
Removal of Existing Structures	1	Lump Sum
Clearing and Grubbing	1	Lump Sum
Common Excavation	5275	Cu. Yd.
Common Excavation (Contractor Furnished)	347	Cu. Yd.
Water (Grading) (Set Price)	1	M-Gal.
Compaction of Earthwork (Type B) (MR-90)	4498	Cu. Yd.
Aggregate Base Special (5")	12,874	Sq. Yd.
Water(Aggregate Base)(Set Price)	1	M-Gal.
Crossroad Pipe (3.0 Sq. Ft.) (RCPHE)	24	Lin. Ft.
Crossroad Pipe (7.0 Sq. Ft.) (RCPHE)	60	Lin. Ft.
Entrance Pipe (1.5 Sq. Ft.) (RCPHE)	322	Lin Ft.
Entrance Pipe (5.1 Sq. Ft.) (RCPHE)	84	Lin Ft.
Entrance Pipe (7.0 Sq. Ft.) (RCPHE)	36	Lin Ft.
End Section (1.5 Sq. Ft.) (RCHE)	18	Each
End Section (5.1 Sq. Ft.) (RCHE)	4	Each
End Section (7.0 Sq. Ft.) (RCHE)	4	Each
Resetting End Section (3.0 Sq. Ft.) (RCHE)	4	Each
Mailbox Installation (Set Price)	9	Each
Traffic Control	1	Lump Sum

For Surfacing Quantities, see Sh. No. 14 .
 For Temporary Erosion and Pollution Control Quantities, see Sh. No. 15.
 For Seeding Quantities, see Sh. No. 23.
 For Pavement Marking Quantities, see Sh. No. 28.
 For Traffic Control Quantities, See Sh. No. 31. (FOR INFORMATION ONLY)

FOR INFORMATION ONLY

DRAINAGE STRUCTURES															
STATION	SIDE	SIZE	TYPE	ENTRANCE PIPE (L.F.)			CROSS ROAD PIPE (L.F.)			END SECTIONS (EACH)					
				1.5 Sq. Ft. (RCPHE)	5.1 Sq. Ft. (RCPHE)	7.0 Sq.Ft. (RCPHE)	3.0 Sq. Ft. (RCPHE)	5.0 Sq. Ft. (RCPHE)	7.0 Sq. Ft. (RCPHE)	1.5 Sq. Ft. (RCHE)	3.0 Sq. Ft. (RCHE)	5.0 Sq. Ft. (RCHE)	7.0 Sq. Ft. (RCHE)		
4+82	Rt.	1.5 Sq. Ft.	EP	38							2				
6+28	Rt.	1.5 Sq. Ft.	EP	30							2				
8+00	Lt.	1.5 Sq. Ft.	EP	38							2				
14+67	CL.	7.0 Sq. Ft.	CRP							60				2	
23+73	CL.	3.0 Sq. Ft.	CRP				24								
26+50	Lt.	5.1 Sq. Ft.	EP		84							4			
31+20	Lt.	1.5 Sq. Ft.	EP	38							2				
34+04	Lt.	1.5 Sq. Ft.	EP	38							2				
35+86	Lt.	1.5 Sq. Ft.	EP	30							2				
39+29	Rt.	7.0 Sq. Ft.	EP			36								2	
39+38	Lt.	1.5 Sq. Ft.	EP	32							2				
44+47	Lt.	1.5 Sq. Ft.	EP	42							2				
45+66	Lt.	1.5 Sq. Ft.	EP	36							2				
TOTALS					322	84	36	24		60	18		4	4	

11/30/2023	Add entrance at Sta. 26+50	P. C./
Webb Rd. from 87th St. S. to 3/4 Mile North Summary of Quantities		
PREPARED BY SEDGWICK COUNTY PUBLIC WORKS HIGHWAY DEPARTMENT		
LYNN T. PACKER, P.E.		DIRECTOR/COUNTY ENGINEER
REVISED	SCALE	DESIGNED
	None	P.C.
	DATE	7/2022
	DRAWN	J.F.
	CHECKED	J.J.R.
	DATE	10/2023
DWG: Summary of Quantities.dwg		13R

GENERAL NOTE:

On surfacing projects, the 6" of Compaction Type AA, shown for the center portion of the roadbed, is for the purpose of restoring the original Compaction Type AA which may have been lost since grading operations. The exact locations of this Compaction Type AA, which will be required, is to be determined by the Engineer at the time of construction. This work shall be paid under the bid item "Compaction of Earthwork (Type AA) (MR-)".

Over all structures, unless otherwise directed by the Engineer, where the top of the hubguard is level with or above the finished shoulder grade, the earth cover over the structure slab shall be removed and backfilled with _____ material as directed by the Engineer. The removal of this material will be subsidiary.

The _____ material used to backfill over the structure shall be paid for at the prices shown in the contract.

The earth shoulders shall be compacted full depth (Type -MR) except, when ordered by the Engineer, the top 3" shall be left uncompacted for seeding.

All side roads and house entrances shall be surfaced with _____ to the R/W line as indicated on the detail. All side roads and house entrances with existing asphalt surface shall be surfaced with _____ at least to the R/W line or to the end of construction as directed by the Engineer. Each mailbox turnout (ON PROJECTS WHERE STABILIZED SHOULDERS ARE NOT SPECIFIED) shall be surfaced with _____ to the limits shown on the detail.

Surfacing material (SA-) shall be used for surfacing house entrances and side roads (_____ C.Y./SQ. YD.) beyond the limits of the asphalt surface to the limits of construction as determined by the Engineer.

The thickness of side road and entrance surfacing may be increased to the same thickness as the stabilized shoulder within the approximate limits of the shoulder.

On projects which specify both asphalt base and surface course materials, side roads, house entrances and mailbox turnouts may be surfaced with both materials at the contractors option, with the approval of the Engineer.

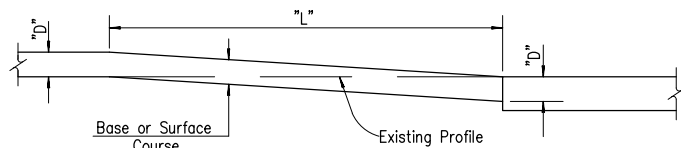
Quantities for aggregate for shoulders, AS-1, are calculated on the basis of 150 lbs. per cu. ft. Quantities for stabilized base course, AB-3, are calculated on the basis of 156 lbs. per cu. ft. Weight/cu. ft. includes moisture allowed by specification.

The base course shall be constructed to the plan thickness as shown.

Thicknesses indicated for all construction which is paid for on a weight or volume basis are approximate and may vary to correct for unevenness in the foundations or for other normal unevenness encountered in placement operations.

A tack coat of SS-1HP shall be provided between each lift of all base courses and under the first lift of base when they are placed on an existing asphalt, brick, or concrete surface, when so ordered by the Engineer and at the rate designated by him. A tack coat of EBL shall be provided for the surface lift at the rate of 0.15-0.20 gal./sq. yd.

Asphalt Material quantities are calculated on the basis of 8.328 lbs. per gal. Shoulder rumble strips will not be constructed as part of this project.



TYPICAL PROFILE AT GRADE CONTROL POINTS

The Contractor shall cut the subgrade in accordance with this profile at all grade control points, i.e.; existing pavements, grade bridges and R.R. crossings, also at changes in thickness of base or surface courses. Corresponding dimensions of "D" and "L" shall be as given in the table below.

The work of cutting the subgrade and disposing of excess excavated material shall be subsidiary to other items in the contract.

TABLE OF DIMENSIONS											
D	L	D	L	D	L	D	L	D	L	D	L
1"	25'	3"	75'	5"	125'	7"	175'	9"	225'	11"	275'
2"	50'	4"	100'	6"	150'	8"	200'	10"	250'	12"	300'

SUMMARY OF QUANTITIES								
STATION TO STATION*	ROADWAY	SIDE	2 1/2" PLANT MIX ASPHALT (BASE) (TONS)*	1 1/2" PLANT MIX ASPHALT (SURFACE) (TONS)†	6" PLANT MIX ASPHALT (ENTRANCES) (BASE) (TONS)‡	SURFACING MAT'L (ENTRANCES) (AB-3) (TONS)§	MILLING (S.Y.)	
2+11.45	46+10	Webb Rd.	CL	1993.30	1094.23	374	162	0.0
TOTALS				1,993.30	1,094.23	374.00	162.00	0.0

* Includes sideroads. Exception for bridge. Computed at the rate of 145 lbs/ft³ and increased 20% for contingencies.
 † Includes sideroads. Computed at the rate of 145 lbs/ft³ and increased 10% for contingencies.
 ‡ Surfacing material for field entrances. See Sh. No. 9 for details. Computed at the rate of 156 lbs/ft³.

SUMMARY OF QUANTITIES (SHOULDERS)						
STATION TO STATION	SIDE	WIDTH	AGGREGATE FOR SHOULDERS (AS-1) (TON)¶	CALCIUM CHLORIDE (TON)	WATER (AGG. SHLDR) (M. GAL.)	REMARKS
TOTALS						

¶ Computed at the rate of 150 lbs/ft³.

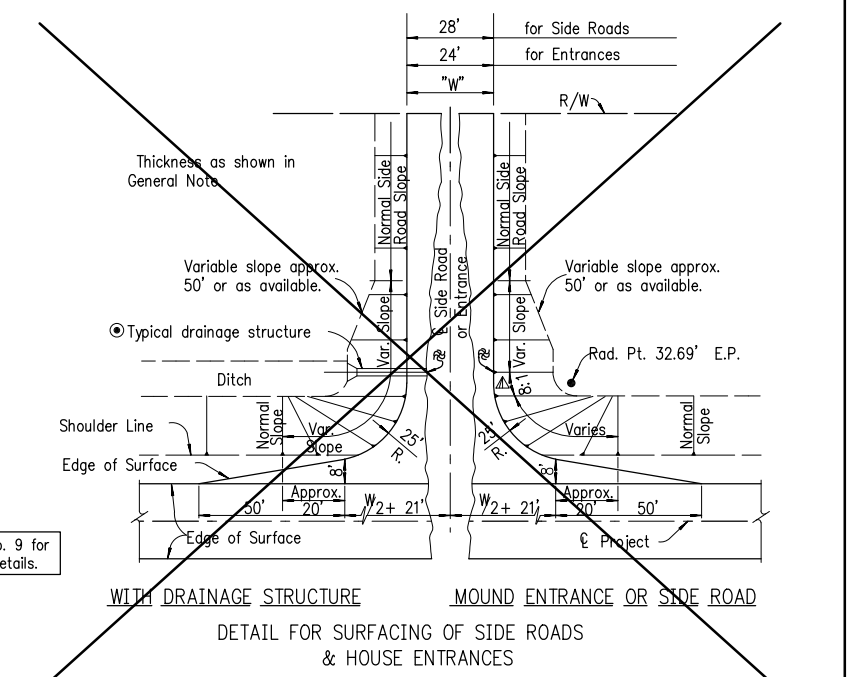
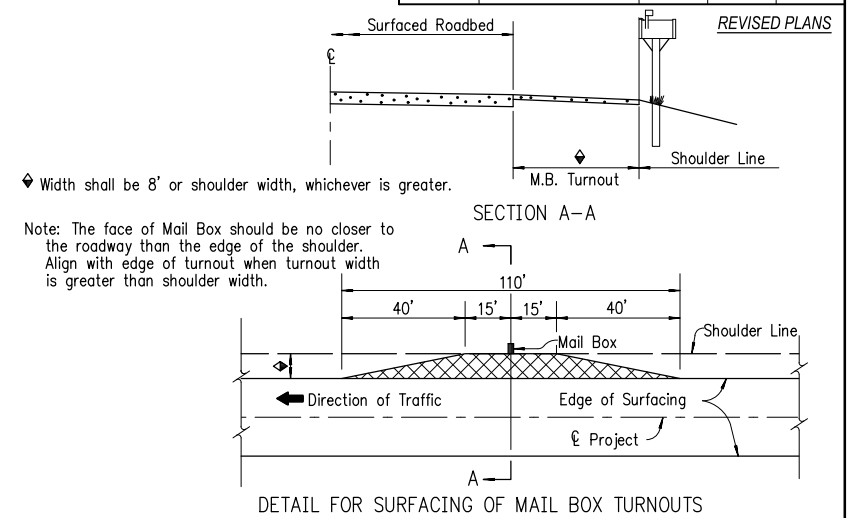
RATES OF APPLICATION				
RATE	UNIT	ITEM		
18.9	Ton	Plant Mix Asphalt Mixture-Commercial Grade (Base) (2 1/2")	per Ln./Sta.	12.5 ft. In.
11.4	Ton	Plant Mix Asphalt Mixture-Commercial Grade (Surface) (1 1/2")	per Ln./Sta.	12.5 ft. In.
0.05	Gal.	Emulsified Asphalt (SS-1HP) for Tack	per sq. yd.	

RECAPITULATION OF QUANTITIES		
ITEM	TOTAL	UNIT
Plant Mix Asphalt Mixture-Commercial Grade (Base) (2 1/2")	1994	Tons
Plant Mix Asphalt Mixture-Commercial Grade (Surface) (1 1/2")	1095	Tons
Plant Mix Asphalt Mixture-Commercial Grade (Entrances) (Base) (6")	374	Tons
Surfacing Material (AB-3)	162	Tons

SUMMARY OF ENTRANCES								
STATION	TYPE	SIDE	L (FT.)	W (FT.)	T (IN.)	AB-3 (TONS)	HMA (TONS)	REMARKS
4+28	III	Rt.	42.5	20	6		43	HMA
6+28	III	Rt.	42.5	30	6		61	HMA
8+00	IV	Lt.	32.5	22	6	40		AB-3
15+08	III	Rt.	20.0	18	6		23	HMA
18+20	III	Lt.	32.5	26	6		43	HMA
26+50	IV	Lt.	27.5	22	6	42		AB-3
28+65	III	Lt.	32.5	17	6		31	HMA
31+20	IV	Lt.	32.5	22	6	40		AB-3
34+04	IV	Lt.	32.5	22	6	40		AB-3
35+86	III	Lt.	32.5	15	6		28	HMA
39+29	III	Rt.	32.5	16	6		29	HMA
39+38	III	Lt.	32.5	17	6		31	HMA
44+47	III	Lt.	32.5	30	6		48	HMA
45+68	III	Lt.	35.5	20	6		37	HMA
Total						162.0	374.0	

* Tonnage has been increased by 15% for contingencies.

STATE	PROJECT NUMBER	FISCAL YEAR	SHEET NO.	TOTAL SHEETS
KANSAS	R367	2023	14R	57



▲ 8:1 Slope at the appropriate clear zone shall apply to all mound entrances and mound side roads to 10' fill height. Normal Slope (but not steeper than 6:1) for over 10' fill height.
 ● Normal Slope (but not steeper than 6:1) at approximate structure or appropriate clear zone width.
 Ⓢ On side roads and entrances which slope toward the highway, a low point approx. 6" deep shall be constructed to divert surface drainage into the highway ditch, unless otherwise shown on the plans.

NO.	DATE	REVISIONS	BY	APP'D
12	1-10-07	Changed bituminous to asphalt	S.W.K.	J.O.B.
11	8-30-06	Changed tack type/rate	S.W.K.	J.O.B.
10	3-24-05	Revised compaction, tack type/rate	S.W.K.	J.O.B.
9	6-12-02	Added low point off shoulder.	S.W.K.	J.O.B.

KANSAS DEPARTMENT OF TRANSPORTATION

SUMMARY OF QUANTITIES (Surfacing)

RD051 14/57

FHWA APPROVAL	9-06-06	APP'D.	James O. Brewer
DESIGNED	DETAILED	QUANTITIES	TRACED
DESIGN CK.	DETAIL CK.	QUAN. CK.	TRACE CK.

Device: AutoCAD PDF (General Documentation).pc3 Page Setup: ---- By: Cater, Paul D. C:\Projects\R367\rd051-Summ. Surfacing Plotted: 12/1/2023 7:51 AM