

RESOLUTION NO. 259-2023

Adopted on: _____

A RESOLUTION TO DELEGATE AUTHORITY IN FURTHERANCE OF THE ACQUISITION OF REAL PROPERTY

WHEREAS, it is deemed necessary and desirable for the Board of County Commissioners of Sedgwick County (“Board”), to purchase real property as described within this resolution and as outlined in red in Exhibit A, which is attached to this resolution; and

WHEREAS, the Board is authorized to acquire real property pursuant to K.S.A. 19-101 and K.S.A. 19-212; and

WHEREAS, the Board approved a real estate purchase contract with Cornejo Holdings LLC on December 6, 2023 (“Contract”); and

WHEREAS, the Board wishes to delegate authority to specified Sedgwick County staff to complete tasks to effectuate the purchase of the real property.

NOW, THEREFORE, BE IT RESOLVED BY THE BOARD OF COUNTY COMMISSIONERS OF SEDGWICK COUNTY, KANSAS, that:

1. The Board hereby authorizes County Manager Tom Stolz, Deputy County Manager Tim Kaufman, and Assistant County Manager Tania Cole to execute and deliver all zoning action applications, plat applications, conveyances, affidavits, instruments, closing documents, deeds, and other documents as may be necessary to perform due diligence and in order to effect and close the purchase of real property described below and outlined in red in Exhibit A, as authorized within the Contract.
2. Such real property is legally described as follows:

Situated in Sedgwick County, Kansas to-wit:

LOTS 36-38-40-42-44 TOPEKA AVE. ENGLISH’S ADD.
LOTS 32-34 TOPEKA AVE. ENGLISH’S ADD.
S 15 FT LOT 26 – ALL LOTS 28-30 TOPEKA AVE. ENGLISH’S ADD.

AND

All other rights Seller has in and to the 30 parking spaces, including access control, if access control devices are installed, within the area to the west of 235 South Topeka Avenue, Wichita, Kansas 67202, for the duration of the term of the Parking Agreement between Allis, LLC and the City of Wichita, Kansas, dated November 9, 2021, and expiring on July 31, 2029, or for the

duration of any extensions of such Parking Agreement with the City of Wichita, Kansas thereof. If Allis, LLC redevelops the parking area west of 235 South Topeka Avenue into a parking garage before July 31, 2029, these 30 parking spaces will transfer from the surface lot parking to the parking garage parking for the duration of any agreement Allis, LLC has with the City of Wichita.

All of the real property is within the City of Wichita, commonly described as 221 S Topeka Ave, 225 S. Topeka Ave, and 235 S Topeka Ave, Wichita, KS 67202

3. This resolution shall be effective upon its adoption.

[Remainder of the page intentionally blank]

Commissioners present and voting were:

PETER F. MEITZNER
SARAH LOPEZ
DAVID T. DENNIS
RYAN K. BATY
JAMES M. HOWELL

aye
aye
aye
aye
aye

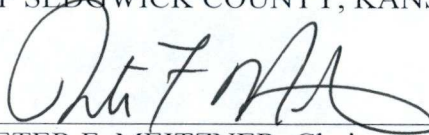
Dated this 13 day of December, 2023.

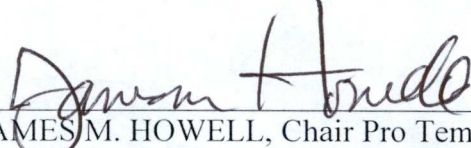
ATTEST:


KELLY B. ARNOLD, County Clerk



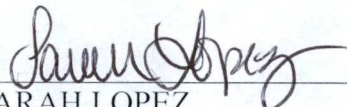
BOARD OF COUNTY COMMISSIONERS
OF SEDGWICK COUNTY, KANSAS



PETER F. MEITZNER, Chairman
Commissioner, First District



JAMES M. HOWELL, Chair Pro Tem
Commissioner, Fifth District

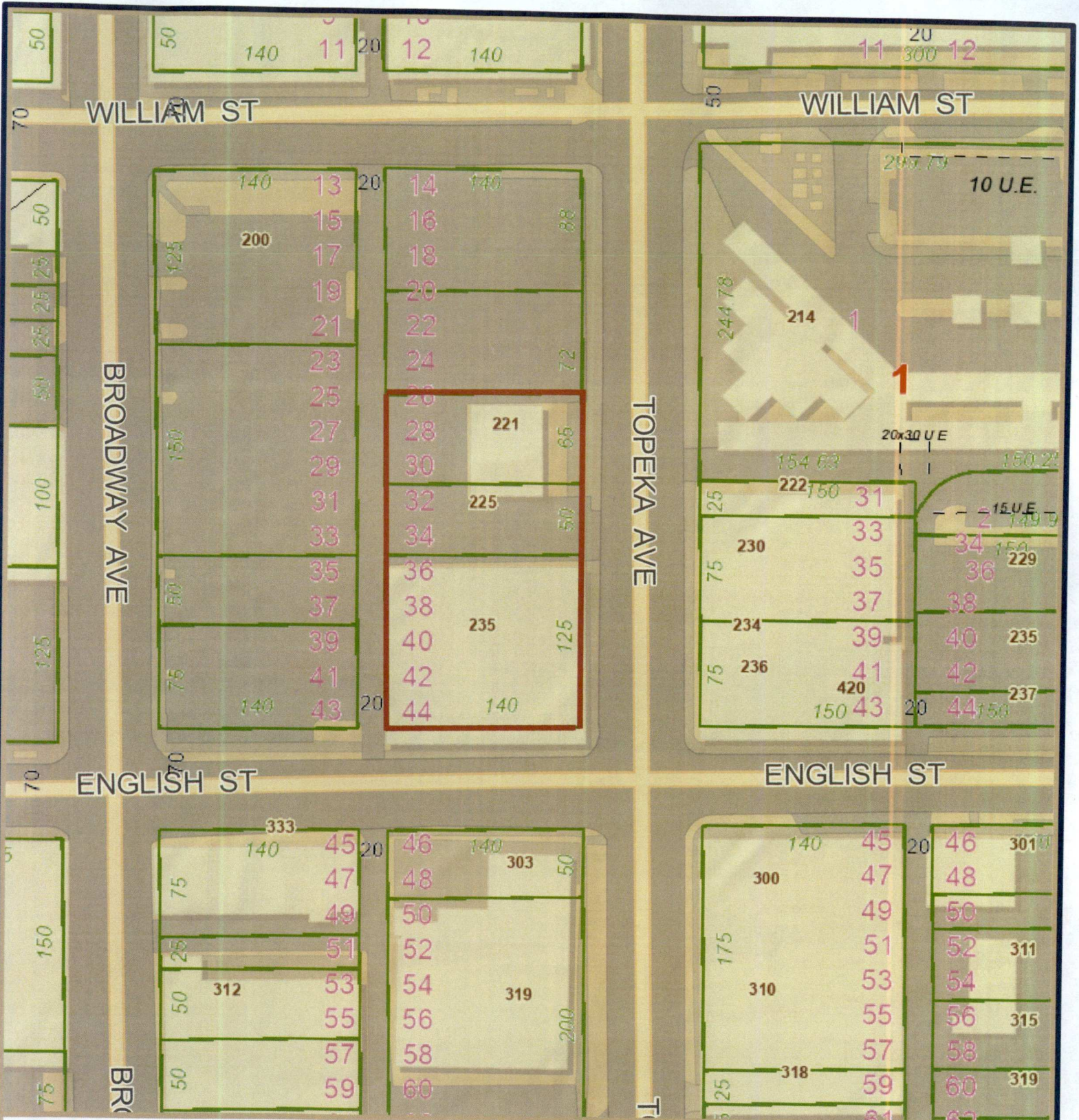
APPROVED AS TO FORM:


JUSTIN M. WAGGONER
County Counselor


SARAH LOPEZ
Commissioner, Second District


DAVID T. DENNIS
Commissioner, Third District


RYAN K. BATY
Commissioner, Fourth District



It is understood that the Sedgwick County GIS, Division of Information and Operations, has no indication or reason to believe that there are inaccuracies in information incorporated in the base map.

The GIS personnel make no warranty or representation, either expressed or implied, with respect to the information or the data displayed.

© 2023 Sedgwick County Kansas Government.
 All rights reserved.

Exhibit A

Sedgwick County, Kansas



1:1,128

