

Technical Education

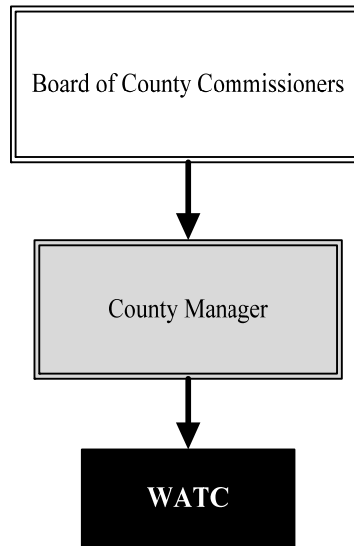
Mission: To provide students with a state-of-the-art technical education, whether they are here for the beginning state of their education or returning to gain further training for new skills.

Kristi Zukovich
 Director of Communication and
 Community Initiatives
 525 N. Main, Suite 343
 Wichita, KS 67203
 316.660.9370
kristi.zukovich@sedgwick.gov

Overview

Wichita Area Technical College (WATC) is dedicated to serving business and industry in south-central Kansas through the delivery of a comprehensive portfolio of programs and services. WATC faculty and staff strive to develop a highly trained workforce and gives Kansas employers a competitive advantage. WATC is committed to providing the training that is needed – where it is needed, when it is needed.

In August 2004, after the Legislature passed a bill that separated WATC from the Unified School District 259, the Board of County Commissioners passed a resolution creating the Sedgwick County Technical Education & Training Authority (SCTETA). The purpose of the Authority is to be a broker/overseer of technical training that fits the needs of businesses and at the same time serves as the Board of Directors for Wichita Area Technical College.



Strategic Goals:

- Provide a national center for aviation training where aviation research and training come together
- Create a facility campus where people can go for retraining, traditional credit based training or specialized/customized training that is primarily for non-credit hours

Highlights

- New programs were implemented in 2012 which include Robotics and Electromechanical Systems
- Students at the National Center for Aviation Training (NCAT) find work, continue their education, or join the military more than 80 percent of the time after finishing educational programs
- NCAT played a major role in the formation of the National Aviation Consortium
- NCAT provided tours for local residents as well as delegations from foreign countries including China, Chile and Ukraine



Accomplishments and Priorities

Accomplishments

NCAT is a world class training and research center designed to meet changing aviation/manufacturing business and workforce needs. NCAT is unique because it brings research and technical training under one roof blending them to meet industry needs. NCAT has two partners: WATC, under the direction of SCTETA, coordinates the training programs and instruction at NCAT, while Wichita State University's (WSU) National Institute for Aviation Research (NIAR) provides research and development opportunities and instruction.

Priorities

WATC is the designated operator for the NCAT campus. Sedgwick County will continue to reimburse WATC, as the operator, for utilities, repairs, cleaning, security, and maintenance costs associated with WSU/NIAR space at NCAT.

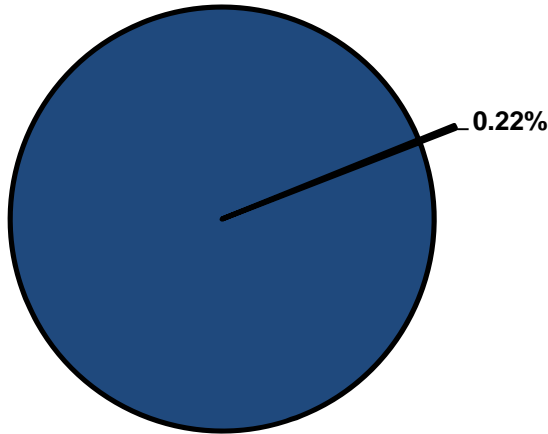


Significant Budget Adjustments

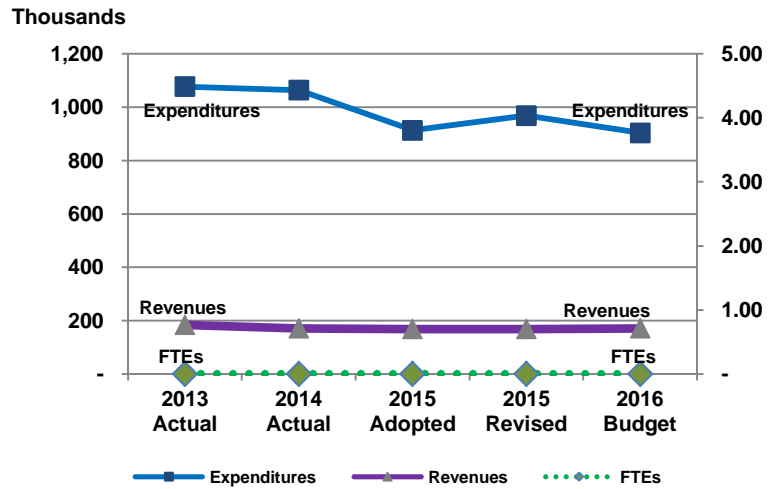
Changes to Technical Education's 2016 budget include a \$75,000 decrease in funding for WATC.

Departmental Graphical Summary

Technical Education
Percent of Total County Operating Budget



Expenditures, Program Revenue & FTEs
All Operating Funds



Budget Summary by Category

	2013 Actual	2014 Actual	2015 Adopted	2015 Revised	2016 Budget	Amount Chg '15 Rev.-'16	% Chg '15 Rev.-'16
Expenditures							
Personnel	-	-	-	-	-	-	-
Contractual Services	1,077,233	1,064,146	913,088	968,628	904,000	(64,628)	-6.67%
Debt Service	-	-	-	-	-	-	-
Commodities	-	-	-	-	-	-	-
Capital Improvements	-	-	-	-	-	-	-
Capital Equipment	-	-	-	-	-	-	-
Interfund Transfers	-	-	-	-	-	-	-
Total Expenditures	1,077,233	1,064,146	913,088	968,628	904,000	(64,628)	-6.67%
Revenues							
Tax Revenues	-	-	-	-	-	-	-
Licenses and Permits	-	-	-	-	-	-	-
Intergovernmental	-	-	-	-	-	-	-
Charges for Services	184,233	171,146	167,793	167,793	171,149	3,356	2.00%
All Other Revenue	-	-	-	-	-	-	-
Total Revenues	184,233	171,146	167,793	167,793	171,149	3,356	2.00%
Full-Time Equivalent (FTEs)							
Property Tax Funded	-	-	-	-	-	-	-
Non-Property Tax Funded	-	-	-	-	-	-	-
Total FTEs	-	-	-	-	-	-	-

Budget Summary by Fund

Fund	2013 Actual	2014 Actual	2015 Adopted	2015 Revised	2016 Budget	Amount Chg '15 Rev.-'16	% Chg '15 Rev.-'16
General Fund	1,077,233	1,064,146	913,088	968,628	904,000	(64,628)	-6.67%
Total Expenditures	1,077,233	1,064,146	913,088	968,628	904,000	(64,628)	-6.67%

Significant Budget Adjustments from Prior Year Revised Budget

	Expenditures	Revenues	FTEs
Reduction in allocation to W.A.T.C.	(100,000)		
Total	(100,000)	-	-

Budget Summary by Program

Program	Fund	2013 Actual	2014 Actual	2015 Adopted	2015 Revised	2016 Budget	% Chg '15 Rev.-'16	2016 FTEs
W.A.T.C.	110	893,000	893,000	743,000	793,000	718,000	-9.46%	-
NCAT Utility Reimb.	110	184,233	171,146	170,088	175,628	186,000	0	-
Total		1,077,233	1,064,146	913,088	968,628	904,000	-6.67%	-

• Wichita Area Technical College

Wichita Area Technical College (WATC) changes lives by training people for high-wage, high-demand jobs. WATC is dedicated to serving business and industry in south-central Kansas through the delivery of a comprehensive portfolio of programs meeting their needs and ensuring students develop the right skills.

Fund(s): County General Fund 110

Expenditures	2013 Actual	2014 Actual	2015 Adopted	2015 Revised	2016 Budget	Amnt. Chg. '15 - '16	% Chg. '15 - '16
Personnel	-	-	-	-	-	-	0.0%
Contractual Services	-	-	-	-	-	-	0.0%
Debt Service	893,000	893,000	743,000	793,000	718,000	(75,000)	-9.5%
Commodities	-	-	-	-	-	-	0.0%
Capital Improvements	-	-	-	-	-	-	0.0%
Capital Equipment	-	-	-	-	-	-	0.0%
Interfund Transfers	-	-	-	-	-	-	0.0%
Total Expenditures	893,000	893,000	743,000	793,000	718,000	(75,000)	-9.5%
Revenues							
Taxes	-	-	-	-	-	-	0.0%
Intergovernmental	-	-	-	-	-	-	0.0%
Charges For Service	-	-	-	-	-	-	0.0%
All Other Revenue	-	-	-	-	-	-	0.0%
Total Revenues	-	-	-	-	-	-	0.0%
Full-Time Equivalents (FTEs)	-	-	-	-	-	-	0.0%

• National Center for Aviation Training Utility Reimbursement

National Center for Aviation Training (NCAT) is a world-class training/research center designed to meet changing aviation/ manufacturing business and workforce needs. Students receive training for aviation manufacturing and aircraft and power plant mechanics. NCAT is unique because it brings research and technical training under one roof blending them to meet industry needs. Two partners are at NCAT: Wichita Area Technical College (WATC), under the direction of Sedgwick County Technical Education & Training Authority, coordinates the training programs and instruction while Wichita State University's (WSU) National Institute for Aviation Research (NIAR) provides research and development as well as instruction. WATC is the designated operator for the NCAT campus. Sedgwick County reimburses WATC, as the operator, for utilities, repairs, cleaning, security, and maintenance costs associated with the WSU/NIAR space at NCAT.

Fund(s): County General Fund 110

Expenditures	2013 Actual	2014 Actual	2015 Adopted	2015 Revised	2016 Budget	Amnt. Chg. '15 - '16	% Chg. '15 - '16
Personnel	-	-	-	-	-	-	0.0%
Contractual Services	-	-	-	-	-	-	0.0%
Debt Service	184,233	171,146	170,088	175,628	186,000	10,372	5.9%
Commodities	-	-	-	-	-	-	0.0%
Capital Improvements	-	-	-	-	-	-	0.0%
Capital Equipment	-	-	-	-	-	-	0.0%
Interfund Transfers	-	-	-	-	-	-	0.0%
Total Expenditures	184,233	171,146	170,088	175,628	186,000	10,372	5.9%
Revenues							
Taxes	-	-	-	-	-	-	0.0%
Intergovernmental	-	-	-	-	-	-	0.0%
Charges For Service	184,233	171,146	167,793	167,793	171,149	3,356	2.0%
All Other Revenue	-	-	-	-	-	-	0.0%
Total Revenues	184,233	171,146	167,793	167,793	171,149	3,356	2.0%
Full-Time Equivalents (FTEs)	-	-	-	-	-	-	0.0%