

# Wichita State University

**Mission:** Committed to providing comprehensive educational opportunities in an urban setting. Through teaching, scholarship, and public service, the University seeks to equip both students and the larger community with the educational and cultural tools they need to thrive in a complex world.

## Wichita State University

1845 N Fairmount  
Wichita KS 67260

316.978.3456

<http://www.wichita.edu>

## Overview

In June 1987, the Board of County Commissioners and the Wichita City Council approved an inter-local agreement in which the City agreed to stop levying its 1.5 mill property tax levy and the County would create a 1.5 mill county-wide levy for Wichita State University (WSU).

Comprising approximately 5.4 percent of the budget is Economic and Community Development. These funds allow the university to continue expanding its involvement in the community's economic development through education and training.

The total revenue received from the levy is distributed into five budget categories. Capital Improvements comprise 32.6 percent of the budget and is primarily used to pay the debt service for the campus facilities and for the National Center for Aviation Training.

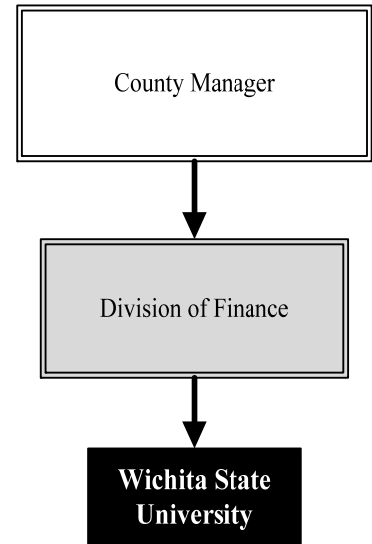
The Organization and Development category makes up less than 1.0 percent of total expenditures and provides funding for the operations and oversight of the mill levy fund by the Board of Trustees and managing the facilities owned by the Board of Trustees.

Student Support makes up approximately 57.2 percent of the budgeted expenditures and serves as the University's primary source of support for scholarships and assistantships for city and county residents. These funds make it possible for many individuals to attend Wichita State University who might otherwise find it financially difficult .

A final category is the Contingency, which comprises 4.0 percent of budgeted expenditures. Sedgwick County requires a contingency of \$300,000 in case property tax payment delinquencies are lower than projected.

## Significant Budget Adjustments

There are no significant adjustments to the 2014 Wichita State University budget.



.....  
**WICHITA STATE  
UNIVERSITY**



Below is the allocation detail for Wichita State University:

<b>Wichita State University Allocation Detail</b>		
	<b>2013 Budget</b>	<b>2014 Budget</b>
Debt Service	1,611,988	1,613,738
National Center for Aviation Training	800,000	800,000
Building Insurance	16,500	16,500
<b>Total Capital Improvements</b>	<b>2,428,488</b>	<b>2,430,238</b>
Undergraduate Support	1,750,000	1,750,000
Sedgwick County Scholars	2,066,400	2,147,610
Urban Assistantships	50,557	50,557
Graduate Research Assistantships	214,156	214,156
Graduate Scholarships	100,133	100,133
<b>Total Student Support</b>	<b>4,181,246</b>	<b>4,262,456</b>
Interns-City/County	136,000	136,000
Business and Economic Research	150,000	150,000
City Government Services	60,000	60,000
County Government Services	60,000	60,000
<b>Total Economic &amp; Community</b>	<b>406,000</b>	<b>406,000</b>
Organization & Development	57,000	57,000
<b>Total Faculty, Research &amp; Services</b>	<b>57,000</b>	<b>57,000</b>
Contingent Revenue	300,000	300,000
Available for unexpected needs	-	-
<b>Total Contingency</b>	<b>300,000</b>	<b>300,000</b>
<b>Total Expenditures</b>	<b>7,372,734</b>	<b>7,455,694</b>

**Significant Adjustments From Previous Budget Year**

Expenditures   Revenue   FTEs

**Total**                                                                     

<b>Budget Summary by Category</b>						<b>Budget Summary by Fund</b>		
	2012 Actual	2013 Adopted	2013 Revised	2014 Budget	% Chg. '13-'14	Expenditures	2013 Revised	2014 Budget
<b>Expenditures</b>								
Personnel	-	-	-	-	-	WSU Program Dev-201	7,408,426	7,455,694
Contractual Services	7,120,438	7,408,426	7,408,426	7,455,694	0.6%			
Debt Service	-	-	-	-	-			
Commodities	-	-	-	-	-			
Capital Improvements	-	-	-	-	-			
Capital Equipment	-	-	-	-	-			
Interfund Transfers	-	-	-	-	-			
<b>Total Expenditures</b>	<b>7,120,438</b>	<b>7,408,426</b>	<b>7,408,426</b>	<b>7,455,694</b>	<b>0.6%</b>	<b>Total Expenditures</b>	<b>7,408,426</b>	<b>7,455,694</b>
<b>Revenue</b>								
Taxes	7,120,438	7,108,426	7,108,426	7,155,694	0.7%			
Intergovernmental	-	-	-	-	-			
Charges For Service	-	-	-	-	-			
Other Revenue	-	300,000	300,000	300,000	0.0%			
<b>Total Revenue</b>	<b>7,120,438</b>	<b>7,408,426</b>	<b>7,408,426</b>	<b>7,455,694</b>	<b>0.6%</b>			
<b>Full-Time Equivalents (FTEs)</b>	-	-	-	-	-			

<b>Budget Summary by Program</b>						<b>Full-Time Equivalents (FTEs)</b>			
Program	Fund	2012 Actual	2013 Adopted	2013 Revised	2014 Budget	% Chg. '13-'14	2013 Adopted	2013 Revised	2014 Budget
Wichita State Univ.	201	7,120,438	7,408,426	7,408,426	7,455,694	0.6%	-	-	-
<b>Total</b>		<b>7,120,438</b>	<b>7,408,426</b>	<b>7,408,426</b>	<b>7,455,694</b>	<b>0.6%</b>	<b>-</b>	<b>-</b>	<b>-</b>

