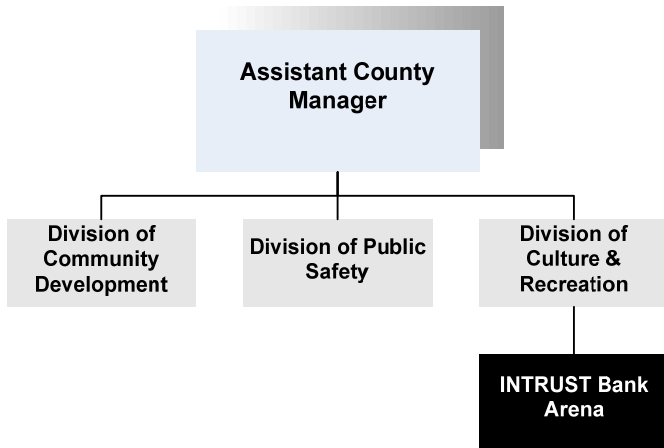


Ron Holt
 Assistant County Manager
 525 N. Main, Suite 343
 Wichita, Kansas 67203
 316-660-9393
 rholt@sedgwick.gov

Mission:

- The Sedgwick County Arena is a modern, first class sports and entertainment venue owned and operated by Sedgwick County, providing for 15,000 seats for basketball games. The Sedgwick County Arena will be home to indoor sporting events, concerts, family shows and other entertainment.



Program Information

The INTRUST Bank Arena is a modern, state-of-the-art sports and entertainment venue, perfect for concerts and conventions alike. Located in the heart of downtown Wichita with restaurants, shops and eclectic entertainment options nearby, the INTRUST Bank Arena is the premier arena in the Midwest. The Arena features 22 suites, 40 loge boxes, 300 premium seats with a total 15,000-seat capacity and hosts the top sporting events and entertainment with the industry’s best acoustics and sound system.

Other arena facts:

- Features 65-foot ceilings (versus 80- or 90- foot ceilings at larger venues) for better acoustics and a more intimate atmosphere
- A large four-sided scoreboard with high-resolution and low-resolution video and LED screens is centrally-hung to complement the smaller LED screens circling the entire arena bowl

- Serves a wide variety of food and beverages from 16 concession stands
- Box office is located inside for comfort in all weather conditions
- Offers 12 ticket windows for quick ticket purchasing and pick-up
- Pre-function room with seating for 150 guests is available for use on non-event days, and prior to certain events
- More than 4,000 parking spaces within a 4-block radius

The facility is owned by the Board of Sedgwick County Commissioners, with a Management Agreement with SMG to provide pre-opening services and management for the INTRUST Bank Arena. SMG manages stadiums, arenas, convention centers, and theaters around the world, and assumed management of the Arena when it opened in early 2010.

Construction costs associated with the INTRUST Bank Arena have been funded without debt from the proceeds of a special one-cent County sales tax, which was approved by voters in November, 2004. Senate Bill 58, signed on April 4, 2005 by Governor Kathleen Sebelius, authorized Sedgwick County to collect a one percent sales tax for a period of 30 months beginning July 1, 2005. The proceeds for this tax were specifically designated for the construction of an Arena in the downtown area of Wichita and renovations to the Coliseum Pavilions. This method allows for the Arena to be constructed while the revenue is collected, eliminating the need for securing bonds to finance the project, saving approximately \$112 million in interest. The Arena sales tax revenues exceeded projections and total \$206.5 million.

Local general contractor Dondlinger & Sons partnered with Hunt Construction, a national firm with significant experience in building arenas. The construction team worked with the Arena designers, the Arena Design Consortium, in bringing to life the building's brick and limestone facades, and the expansive lobby view toward Kellogg welcomes visitors and blends with the surrounding architectural heritage. The location was selected to help generate further redevelopment efforts by the City of Wichita for the downtown area.

Departmental Sustainability Initiatives

The INTRUST Bank Arena will contribute toward promoting, supporting and facilitating the creation of wealth and employment opportunities in downtown Wichita. The Metropolitan Area Planning Department (MAPD), which is jointly funded by Sedgwick County and the City of Wichita, is tasked with producing the neighborhood redevelopment plan for the area surrounding the INTRUST Bank Arena.

The Kansas Pavilions at the Kansas Coliseum complex will continue to operate in concert with the INTRUST Bank Arena.

Department Accomplishments

One of the unique aspects of the Arena project has been the continuous citizen involvement. Commissioners have encouraged citizen engagement as a means of soliciting ideas, concerns and views throughout the process. Two citizen-based committees, the Citizen Arena Sales Tax Oversight Committee and the Citizen Design Review Committee were created to ensure public participation, as well as numerous public meetings. In addition, Sedgwick County uses the Sedgwick County website and streaming video in an effort to continue a transparent and open Arena planning process.

Some 2010 top events include:

- February 19: George Strait with Reba
- March 3: Elton John and Billy Joel
- April 1: Taylor Swift
- May 22: Star Wars in Concert
- June 23: Michael Buble
- June 30: Eagles
- August 3: Jonas Brothers with Demi Lovato
- August 14: Dave Matthews Band
- October 19: Carrie Underwood
- November 20: The Radio City Christmas Spectacular – Starring the Rockettes

Arena Timeline

- 1977 - Kansas Coliseum built
- November 2, 2004 - Sedgwick County Arena approved by Sedgwick County voters.
- April 4, 2005 - Governor signs Senate Bill 58
- July 1, 2005 - Sales tax begins
- July 27, 2005 - Arena Design Consortium awarded contract for engineering and architect services for the Arena.
- November 2005 - Site selection complete
- January 2006 - Land acquisition begins
- May 24, 2006 - Exterior design selected
- November 2006 - Start bid process to hire general contractor for Pavilion upgrade
- June 2007 - Arena Design Consortium awarded contract for engineering and architect services for the Arena.
- July 2007 – Site demolition completed
- September 2007 – Arena construction begins
- September 2007 – Pavilions closed for renovations (May – Sept.)
- December 2007 – Sales tax ends
- Early 2010 – Arena construction complete

Budget Adjustments

The INTRUST Bank Arena's 2011 budget reflects support of \$977,889 from the arena sales tax fund for INTRUST Bank Arena maintenance and the Kansas Pavilions subsidy.

Significant Adjustments From Previous Budget Year

- Major repairs
- Naming rights servicing costs

Expenditures	Revenue	FTEs
100,000		
260,000		

Total	360,000	-	-
--------------	---------	---	---

Budget Summary by Category

Budget Summary by Fund

Expenditures	2009	2010	2010	2011	% Chg.	Expenditures	2010	2011
	Actual	Adopted	Revised	Budget	'10-'11		Revised	Budget
Personnel	-	-	-	-	-	Downtown Arena-550	616,989	977,889
Contractual Services	-	-	32,000	392,900	1127.8%			
Debt Service	-	-	-	-	-			
Commodities	-	-	-	-	-			
Capital Improvements	-	-	-	-	-			
Capital Equipment	-	-	-	-	-			
Interfund Transfers	-	584,989	584,989	584,989	0.0%			
Total Expenditures	-	584,989	616,989	977,889	58.5%	Total Expenditures	616,989	977,889
Revenue								
Taxes	-	-	-	-	-			
Intergovernmental	-	-	-	-	-			
Charges For Service	-	-	-	590,000				
Other Revenue	-	-	-	-	-			
Total Revenue	-	-	-	590,000				
Full-Time Equivalents (FTEs)	-	-	-	-				

Budget Summary by Program

Program	Fund	Expenditures				2011 % Chg. Budget '10-'11	Full-Time Equivalents (FTEs)		
		2009 Actual	2010 Adopted	2010 Revised	2010 Adopted		2010 Revised	2011 Budget	
Pavilion Operations	550	-	584,989	584,989	584,989	0.0%	-	-	-
Arena Operations	550	-	-	32,000	392,900	1127.8%	-	-	-
Total		-	584,989	616,989	977,889	58.5%	-	-	-



● Pavilion Operations

Senate Bill 58, signed on April 4, 2005 by Governor Kathleen Sebelius, authorized Sedgwick County to collect a one percent sales tax for a period of 30 months beginning July 1, 2005. The proceeds for this tax were specifically designated for the construction of an Arena in the downtown area of Wichita, renovations to the Coliseum Pavilions, and an operating/maintenance reserve for the INTRUST Bank Arena and the Kansas Coliseum complex. Beginning in 2010, the operating subsidy to the Kansas Coliseum complex was paid from the Arena Sales Tax fund. This is expected to continue in 2011.

Fund(s): Downtown Arena 550

57002-550

	2009	2010	2010	2011	% Chg.
	Actual	Adopted	Revised	Budget	'10-'11
Expenditures					
Personnel	-	-	-	-	
Contractual Services	-	-	-	-	
Debt Service	-	-	-	-	
Commodities	-	-	-	-	
Capital Improvements	-	-	-	-	
Capital Equipment	-	-	-	-	
Interfund Transfers	-	584,989	584,989	584,989	0.0%
Total Expenditures	-	584,989	584,989	584,989	0.0%
Revenue					
Taxes	-	-	-	-	
Intergovernmental	-	-	-	-	
Charges For Service	-	-	-	-	
Other Revenue	-	-	-	-	
Total Revenue	-	-	-	-	
Full-Time Equivalents (FTEs)	-	-	-	-	

● Arena Operations

Senate Bill 58, signed on April 4, 2005 by Governor Kathleen Sebelius, authorized Sedgwick County to collect a one percent sales tax for a period of 30 months beginning July 1, 2005. The proceeds for this tax were specifically designated for the construction of an Arena in the downtown area of Wichita, renovations to the Coliseum Pavilions, and an operating/maintenance reserve for the INTRUST Bank Arena and the Kansas Coliseum complex. The Arena Operations fund center is budgeted for operation and maintenance expenditures for the INTRUST Bank Arena.

Fund(s): Downtown Arena 550

57014-550

	2009	2010	2010	2011	% Chg.
	Actual	Adopted	Revised	Budget	'10-'11
Expenditures					
Personnel	-	-	-	-	
Contractual Services	-	-	32,000	392,900	1127.8%
Debt Service	-	-	-	-	
Commodities	-	-	-	-	
Capital Improvements	-	-	-	-	
Capital Equipment	-	-	-	-	
Interfund Transfers	-	-	-	-	
Total Expenditures	-	-	32,000	392,900	1127.8%
Revenue					
Taxes	-	-	-	-	
Intergovernmental	-	-	-	-	
Charges For Service	-	-	-	590,000	
Other Revenue	-	-	-	-	
Total Revenue	-	-	-	590,000	
Full-Time Equivalents (FTEs)	-	-	-	-	

