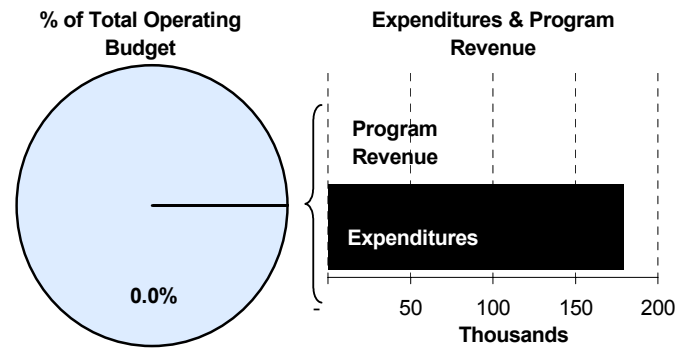
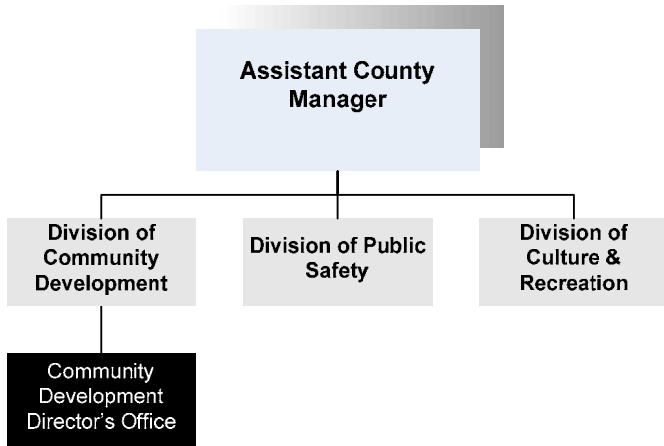


Irene Hart
 Director of Community Development
 510 N. Main, 6th Floor
 Wichita, KS 67203
 316-660-9863
ihart@sedgwick.gov

Mission:

- To promote the growth of a healthy and productive community that successfully integrates the natural, the social, and the economic environments.

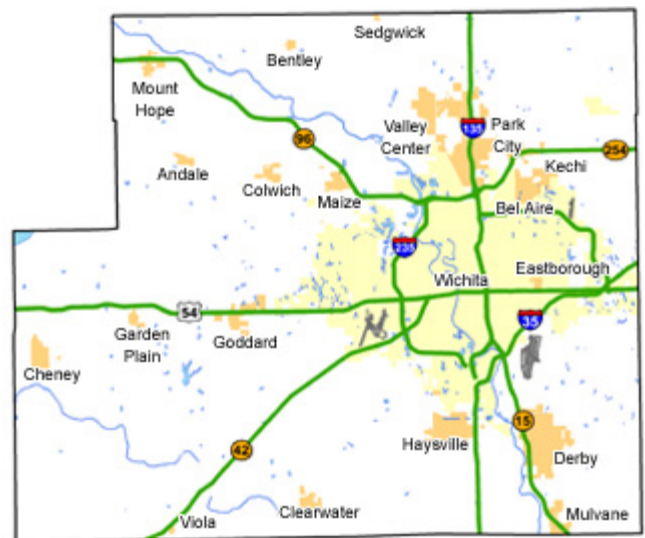


Program Information

The Community Development Director’s Office is responsible for a broad range of both internal and external functions. Internally, the office oversees the operation of four individual departments and all programs funded within the Community Development Division. The Director’s Office provides administrative support and encourages coordination of community development efforts among internal and external entities.

The Director’s Office functions externally as the primary policy staff for economic development and activities engaging the community, other local governments, and interested organizations. Activities include:

- Primary staff support for the K-96 and K-254 Corridor Coalitions and the Greater Wichita Economic Development Coalition.
- Working with multiple jurisdictions and interest groups to develop policies which promote efficient and orderly urban growth.
- Acting as a liaison to ethnic, minority and neighborhood-based organizations in the County.



Departmental Sustainability Initiatives

Environmental Resources provides free environmental assessments and Phase I study reports to Mennonite Housing so they can obtain Housing and Urban Development (HUD) grants. The Department has also performed Phase I environmental studies to obtain grants for the National Center for Aviation Training. Environmental Resources has also worked with Greater Wichita Economic Development Coalition (GWEDC) in the recruitment of businesses to our community. The Department has provided these businesses with information on local environmental permits, environmental conditions in our community, and the Phase I environmental study of properties in question.

Code Enforcement provides a “One-Stop-Shop” location for citizens to obtain the proper permits needed for construction projects. In the past, citizens would make multiple stops at various destinations to obtain all necessary permits. Permits for building construction, wastewater, floodplain, mortgage inspection, and water wells can now be picked up from the Code Enforcement office at 1144 S. Seneca.

The Animal Control Department is responsible for enforcing all Sedgwick County codes concerning the housing and care of animals. Officers also ensure that animals do not pose a health or safety hazard to County residents and that each animal is appropriately vaccinated and licensed as required by law per County Statute.

Economic Development promotes a strong and diverse regional economy by helping local businesses grow, increasing opportunity for international trade, and business retention and attracting new jobs to Sedgwick County.

Sedgwick County offers economic assistance for various area agencies that provide significant contributions to the community. Agencies funded by Community

Programs submit budget proposals outlining funding needs and justification for local government assistance.

Beginning in 2005, Sedgwick County and the City of Wichita adopted a transportation service agreement to provide a funding subsidy for AirTran Airways. This airline, operating out of Wichita’s Mid-Continent Airport, provides lower fares for citizens traveling to and from Wichita, encouraging airline competition in the Wichita market. The subsidy is part of the Affordable Airfares program.

Department Accomplishment

The K-254 Corridor Coalition Final Report is now available on the Sedgwick County website. The K-254 Corridor Economic Development Plan represents a regional effort that spans the border of two counties and intersects six communities. The Counties of Sedgwick and Butler and the communities of Wichita, Bel-Aire, Kechi, Towanda, and El Dorado have come together to plan for the future development of the K-254 Corridor.

Every year approximately 1,000 low and moderate-income families throughout the State use either the Kansas Local Government Statewide Housing Program (KLGSH) or the Kansas Mortgage Savers Program (KMS) to buy their first home. These programs are administered by the Sedgwick

County Housing Department and offer unique opportunities for qualified first-time homebuyers.

Budget Adjustments

Changes to the Community Development Director’s 2009 budget reflect increases in benefits costs and a 4.0 percent salary pool for employees. The budget also reflects the 3.0 percent increase in contractals and commodities from the 2008 Adopted budget.

Alignment with County Values

- **Equal Opportunity -**
The Department acts as a liaison to ethnic, minority and neighborhood based organizations in the County
- **Honesty -**
Business incentive policies are widely available to the public and are applied consistently
- **Professionalism -**
Members of the K-96 Association work in collaboration, without regard to political boundaries, to stimulate appropriate development along the entire length of the corridor

Goals & Initiatives

- **Commit resources to increase vitality and values of existing neighborhoods**
- **Retain and expand jobs through incentives and other innovative means**
- **Implement Phase II of the K-96 Corridor Development Plan**

