

# Criminal Justice Coordinating Council

## Population Report & Program Trends

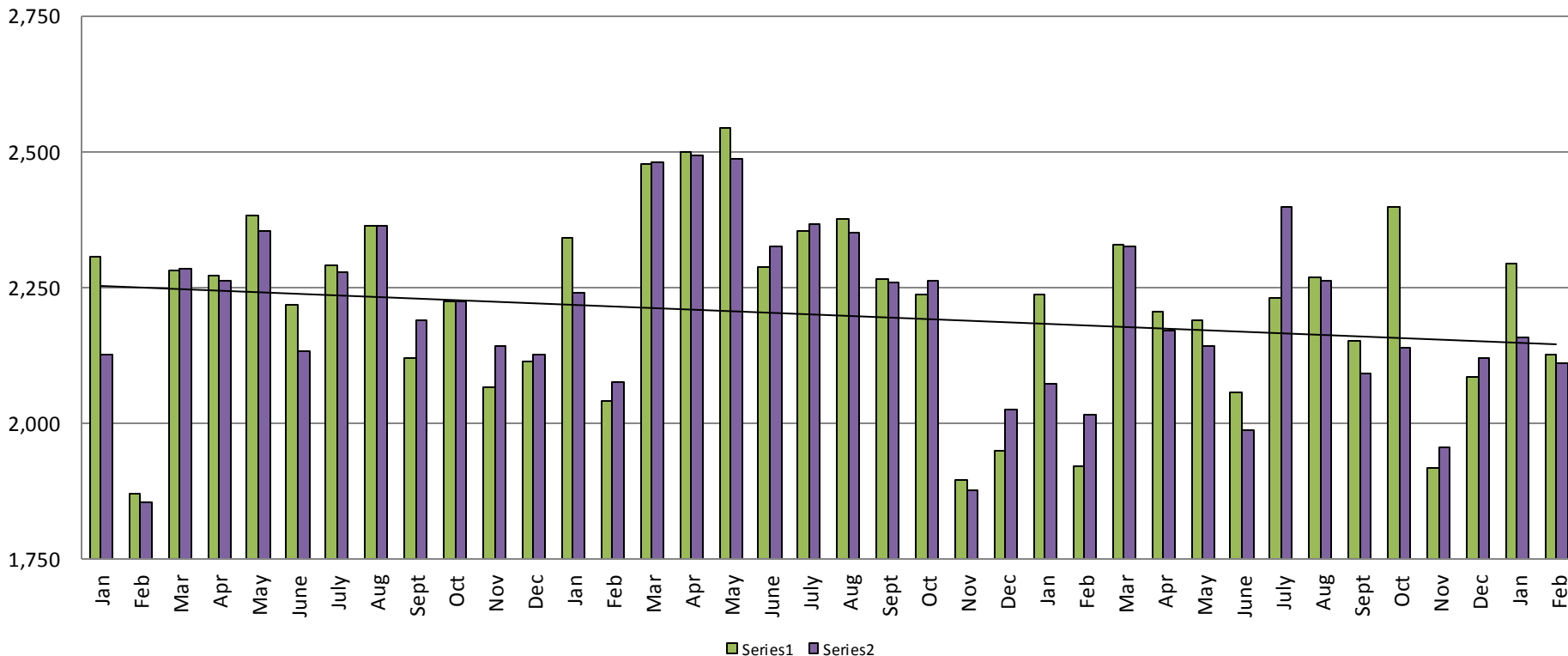
March 24, 2016



*Sedgwick County...*  
*working for you*

# Detention Facility

## Booking Admits & Housing Discharges from Custody January 2013 - Present



### Housing Discharges for February

2013 = 1,854  
 2014 = 2,076  
 2015 = 2,016  
 2016 = 2,111

### Bookings for February

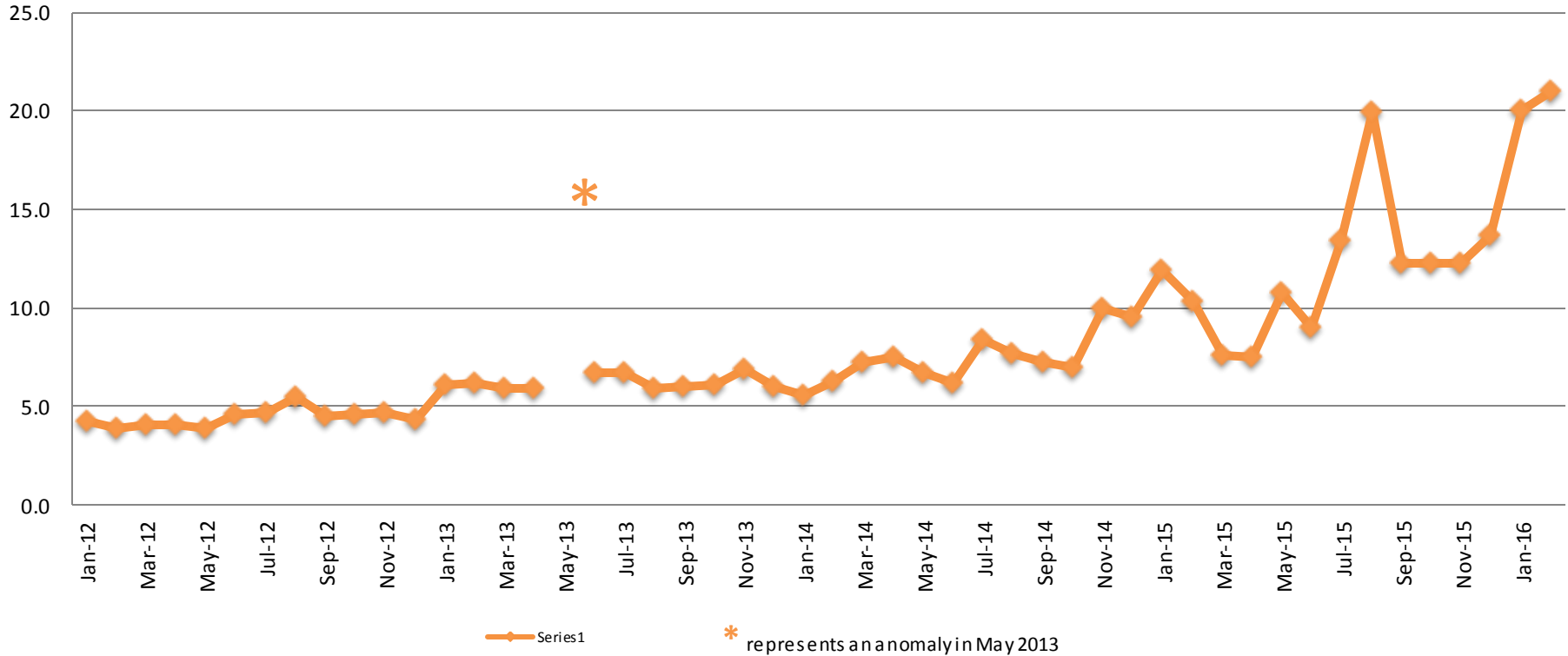
2013 = 1,871  
 2014 = 2,040  
 2015 = 1,921  
 2016 = 2,128

(data obtained from detention facility)



# Average Length of Stay: Booking (Hours)

January 2012 - Present



## February

2012 = 3.9

2013 = 6.2

2014 = 6.3

2015 = 10.3

2016 = 21.0

## February YTD Avg.

2012 = 4.1

2013 = 6.2

2014 = 6.0

2015 = 11.1

2016 = 20.5

(data obtained from detention facility)

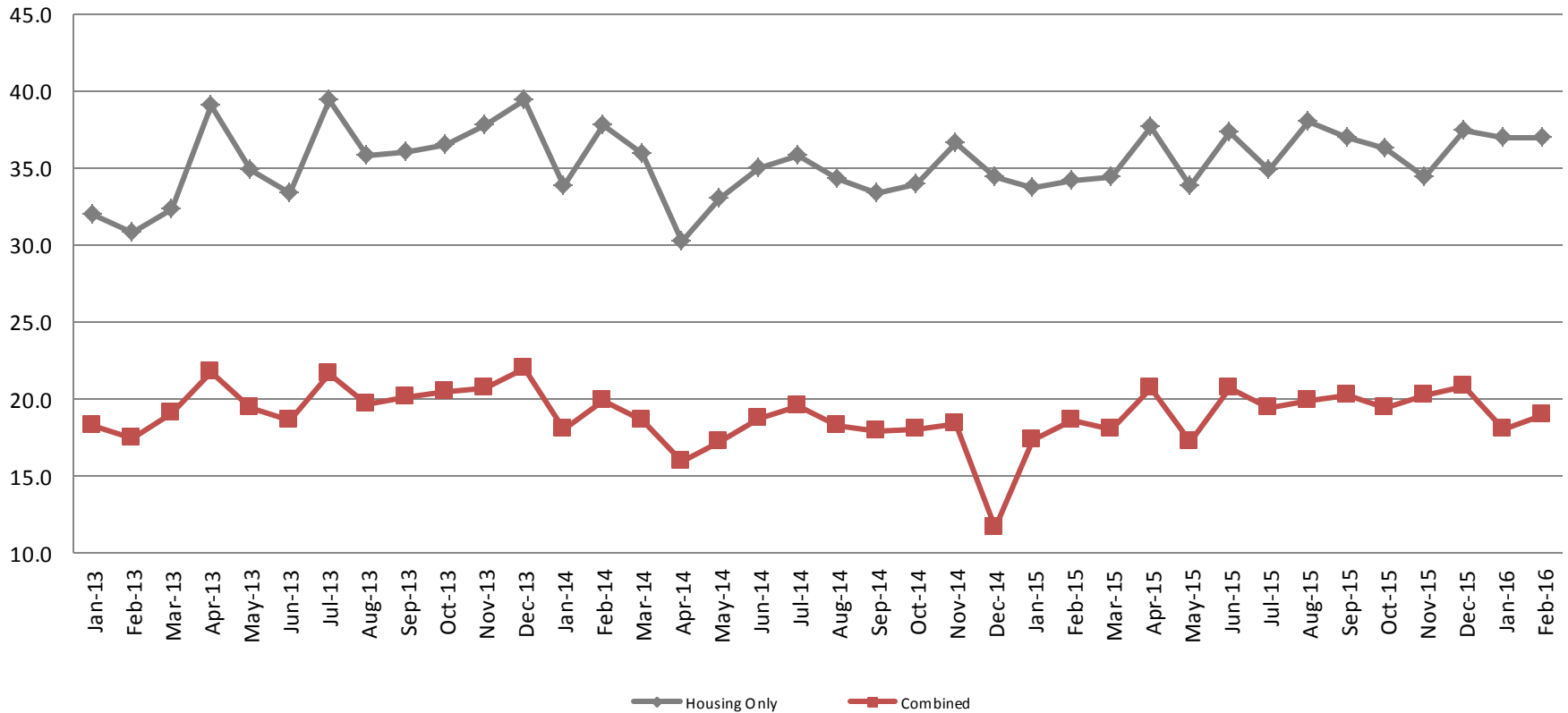


Sedgwick County...  
working for you

# Average Length of Stay: Housing & Combined (Days)

January 2013 - Present

Present



## February Housing

2013 = 30.8  
 2014 = 37.8  
 2015 = 34.2  
 2016 = 37.0

## February Housing YTD Avg.

2013 = 31.4  
 2014 = 35.9  
 2015 = 34.0  
 2016 = 37.0

## February Combined

2013 = 17.5  
 2014 = 19.9  
 2015 = 18.6  
 2016 = 19.0

## February Combined YTD Avg.

2013 = 17.9  
 2014 = 19.0  
 2015 = 18.0  
 2016 = 18.5

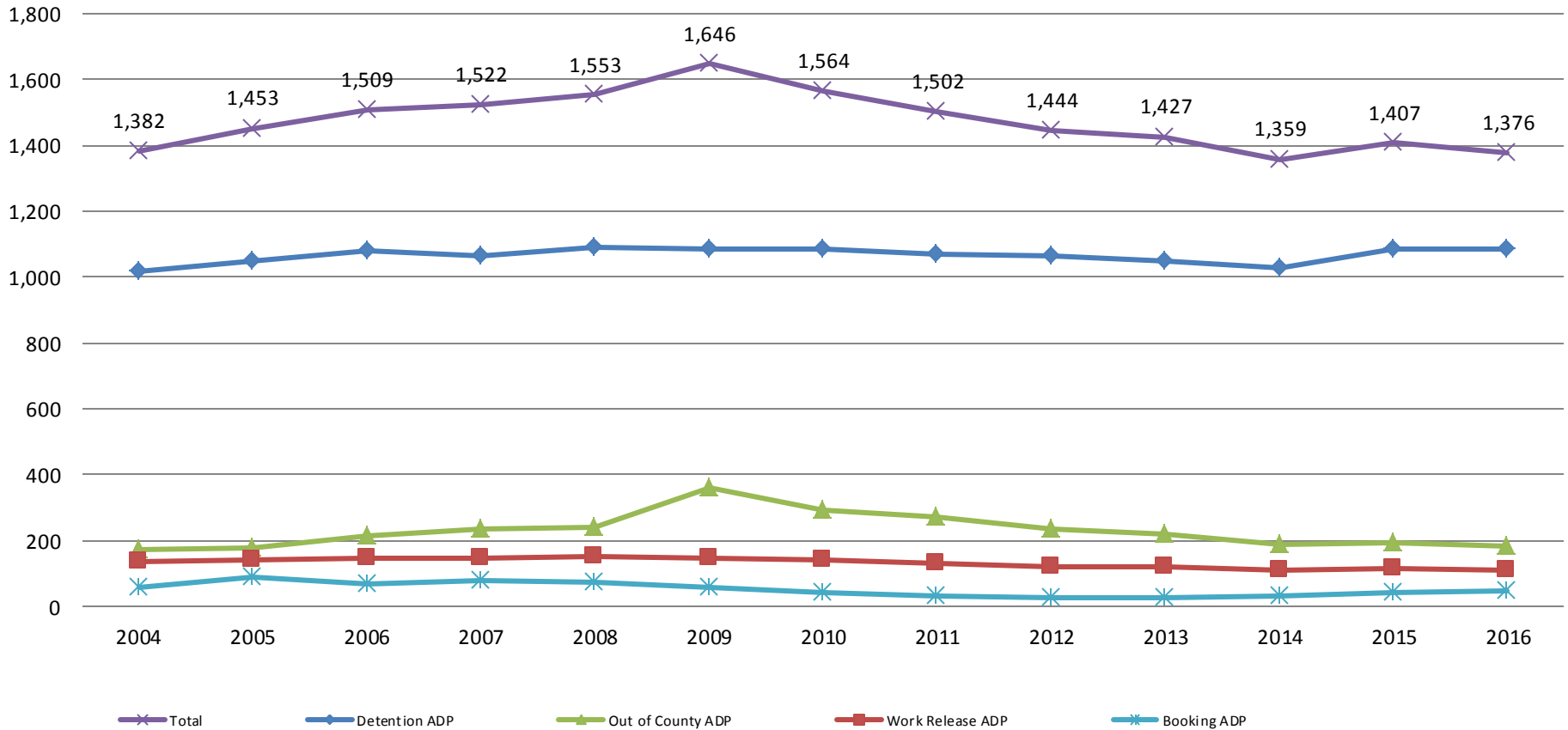


Sedgwick County...  
 working for you

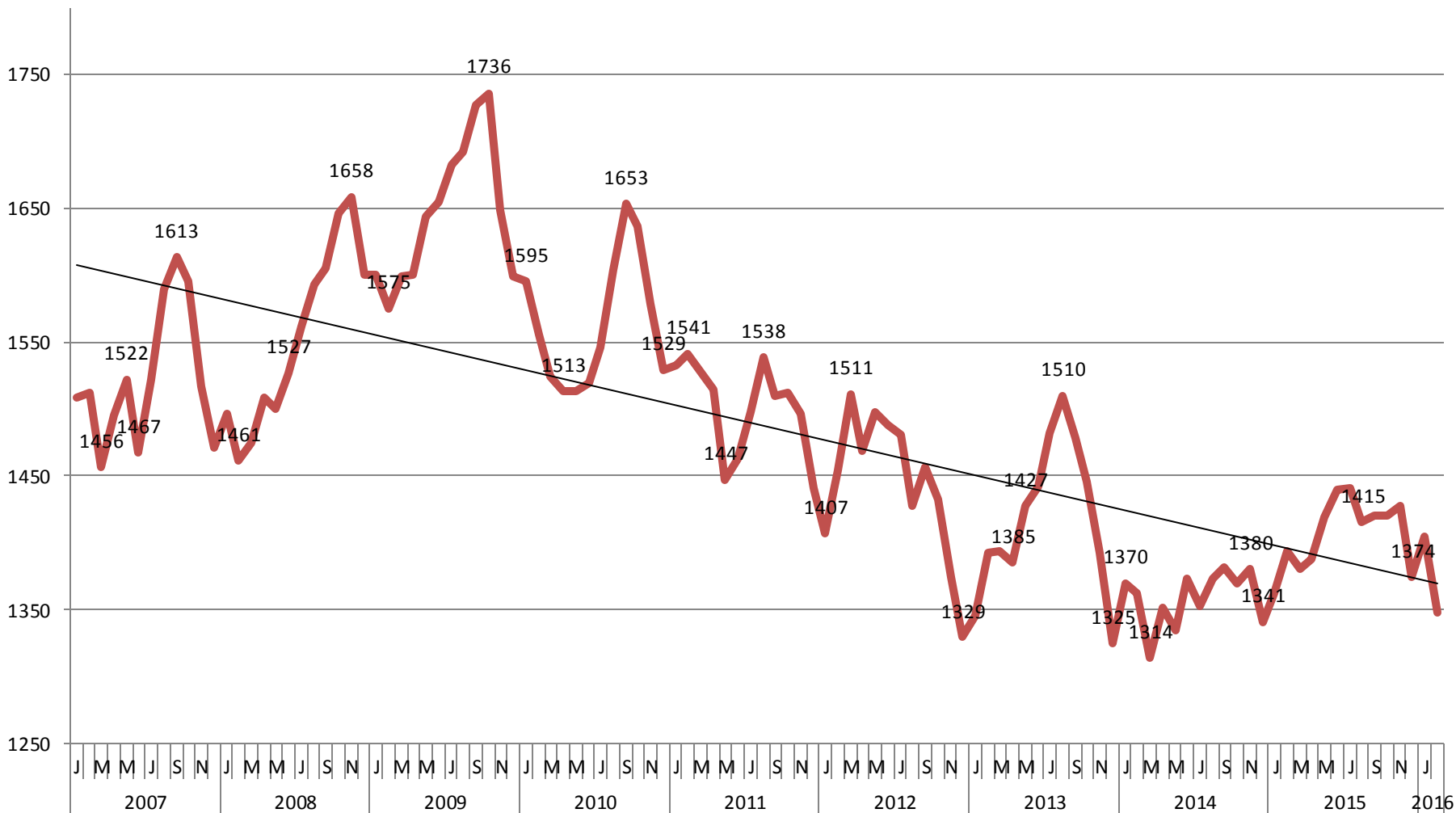
(data obtained from detention facility)

# Jail: Annual Average Daily Population (ADP)

**TRENDS: Booking, Detention, Work Release, & Out of County Annual ADP: 2004 - present**



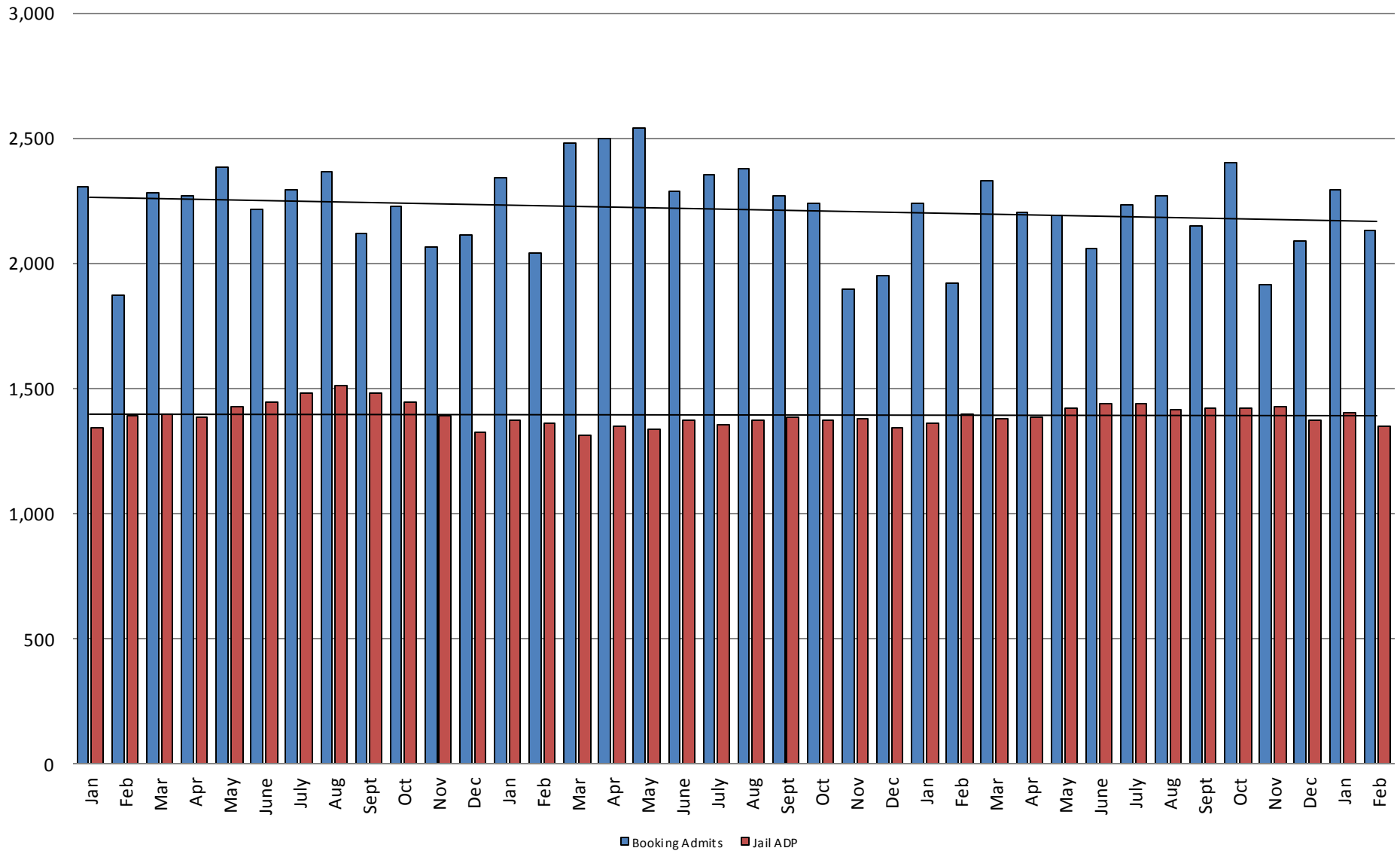
# TOTAL MONTHLY ADP: JAIL (Booking, Detention Facility, Work Release, & Out of County) 2007 - present



This slide shows total monthly ADP for individuals in booking, detention, work release and out-of county (combined)



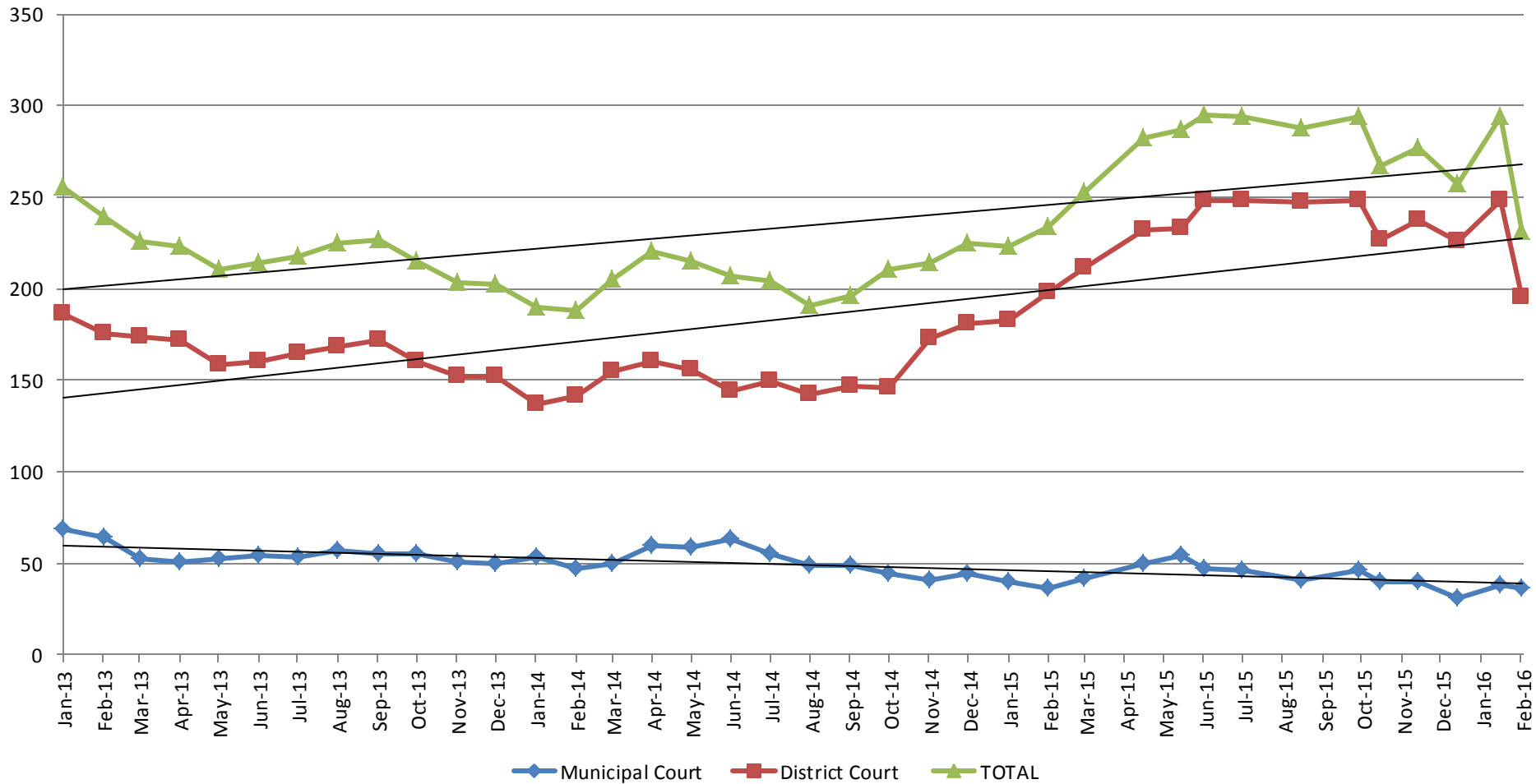
# Booking Admits & Total Monthly ADP (Jail): 2013 - present



Jail includes individuals in booking, detention, work release and out-of county (combined)

(data obtained from detention facility)

# Pretrial Services Program (PSP) Monthly ADP: January 2013 - Present



<b>February</b>	<b>2013</b>	<b>2014</b>	<b>2015</b>	<b>2016</b>	<b>February YTD Avg.</b>	<b>2013</b>	<b>2014</b>	<b>2015</b>	<b>2016</b>
Municipal Court	64	47	36	36	Municipal Court	67	50	38	37
District Court	175	141	198	195	District Court	181	139	191	222
<b>TOTAL</b>	<b>239</b>	<b>188</b>	<b>234</b>	<b>231</b>	<b>TOTAL</b>	<b>247</b>	<b>189</b>	<b>229</b>	<b>263</b>

294

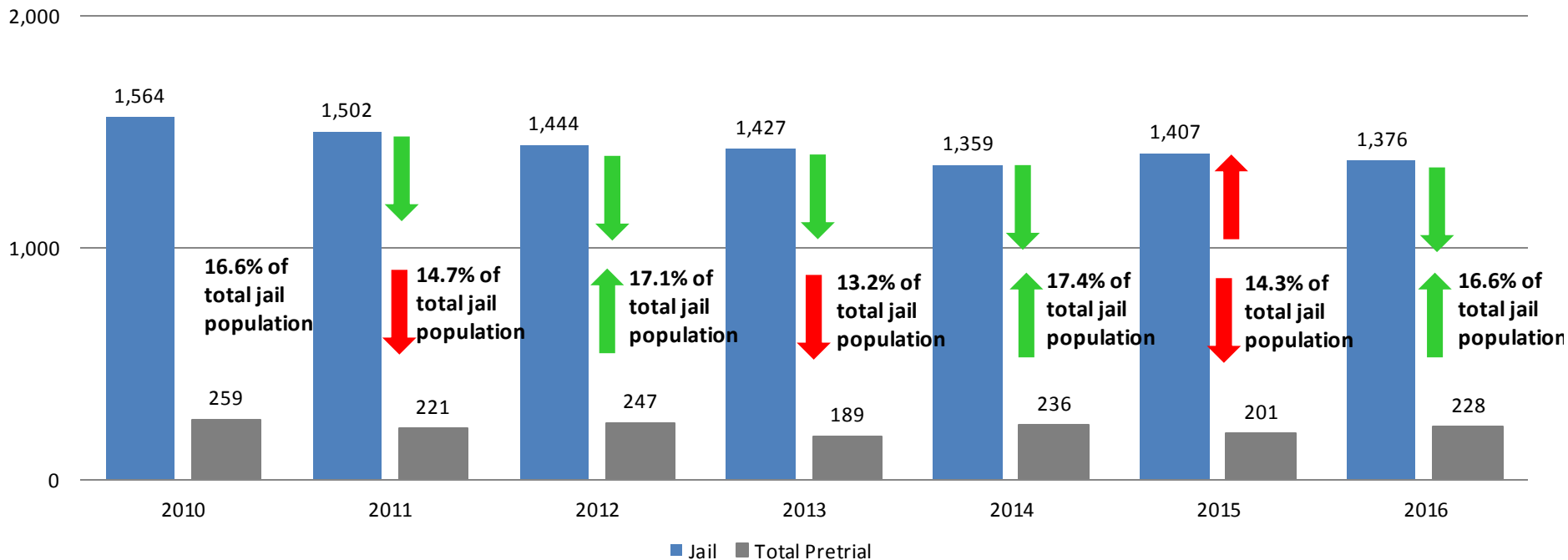


(data obtained from Pretrial Services)



# Correlation: Total & PSP

## Total Annual ADP: 2010 - Present

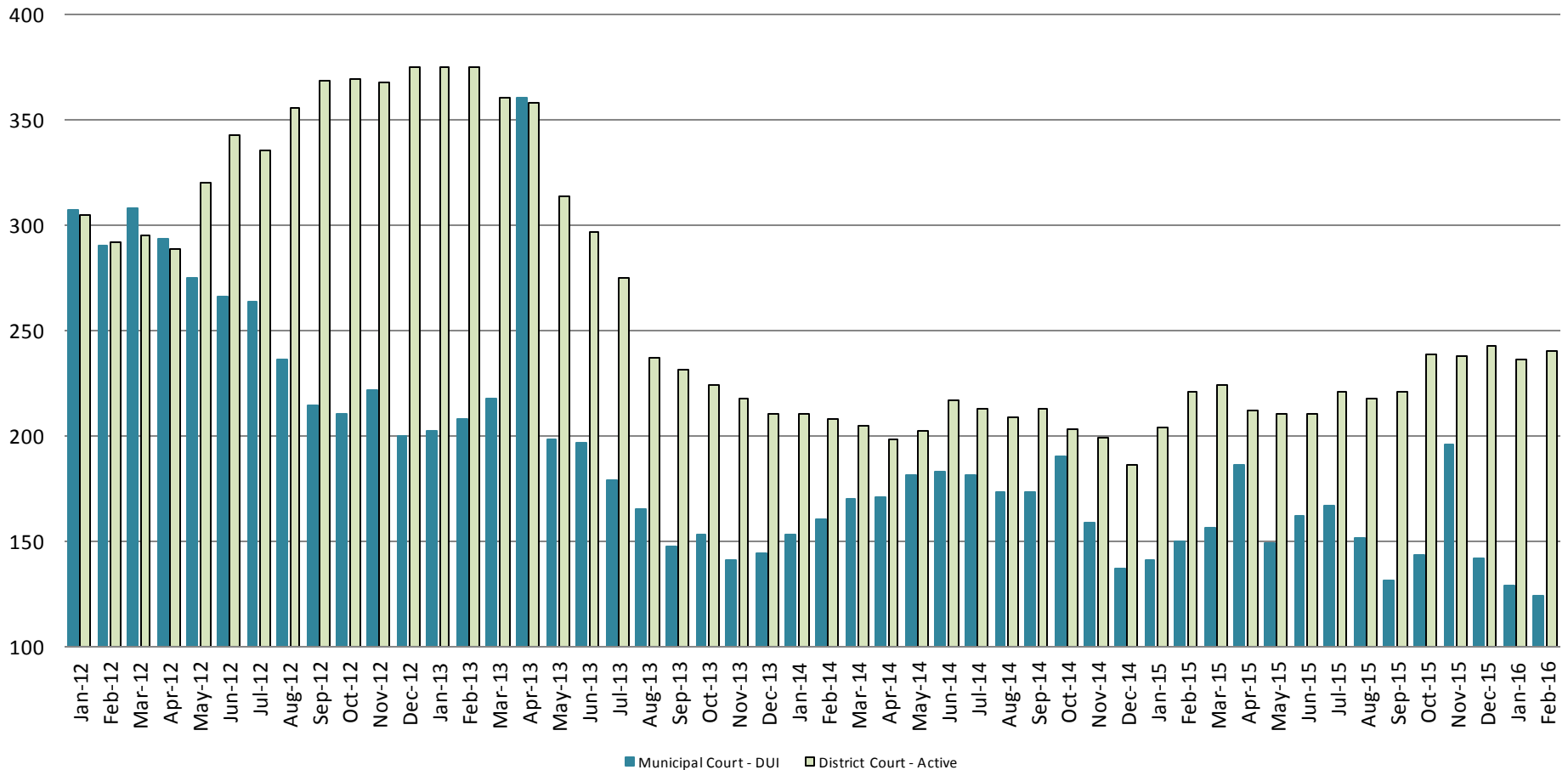


Arrows represent the overall increase/decrease of the population from year to year

Jail includes individuals in booking, detention, work release and out-of county (combined)

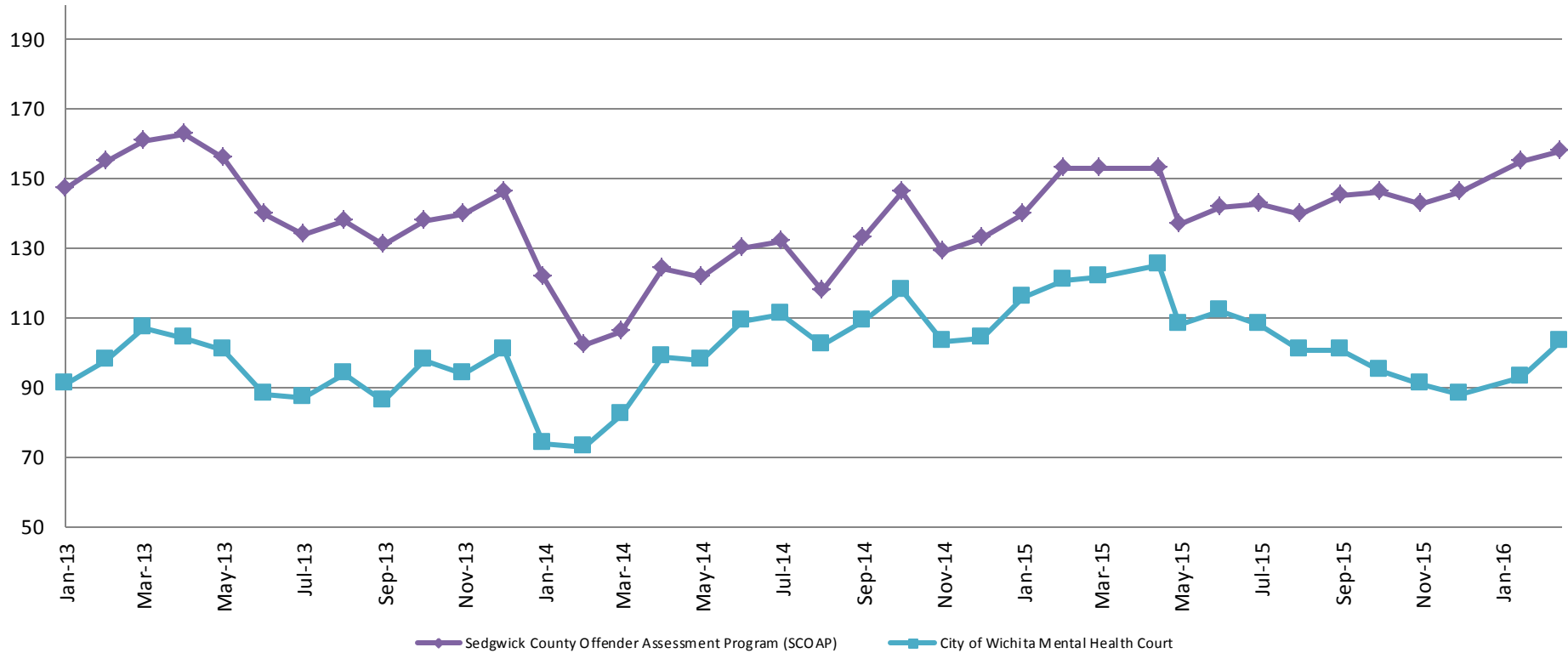
# Diversion - Active Caseload

January 2012 - Present



<u>February</u>	<u>2012</u>	<u>2013</u>	<u>2014</u>	<u>2015</u>	<u>2016</u>	<u>February YTD Avg.</u>	<u>2012</u>	<u>2013</u>	<u>2014</u>	<u>2015</u>	<u>2016</u>
Municipal Court- DUI	290	208	160	150	124	Municipal Court	299	205	157	146	127
District Court- Active	292	375	208	221	127	District Court	299	375	209	213	238

# Mental Health - ADP 2013 - present



<b>February:</b>	<b>2013</b>	<b>2014</b>	<b>2015</b>	<b>2016</b>
SCOAP	155	102	153	158
CoW – MH Court	98	73	121	103

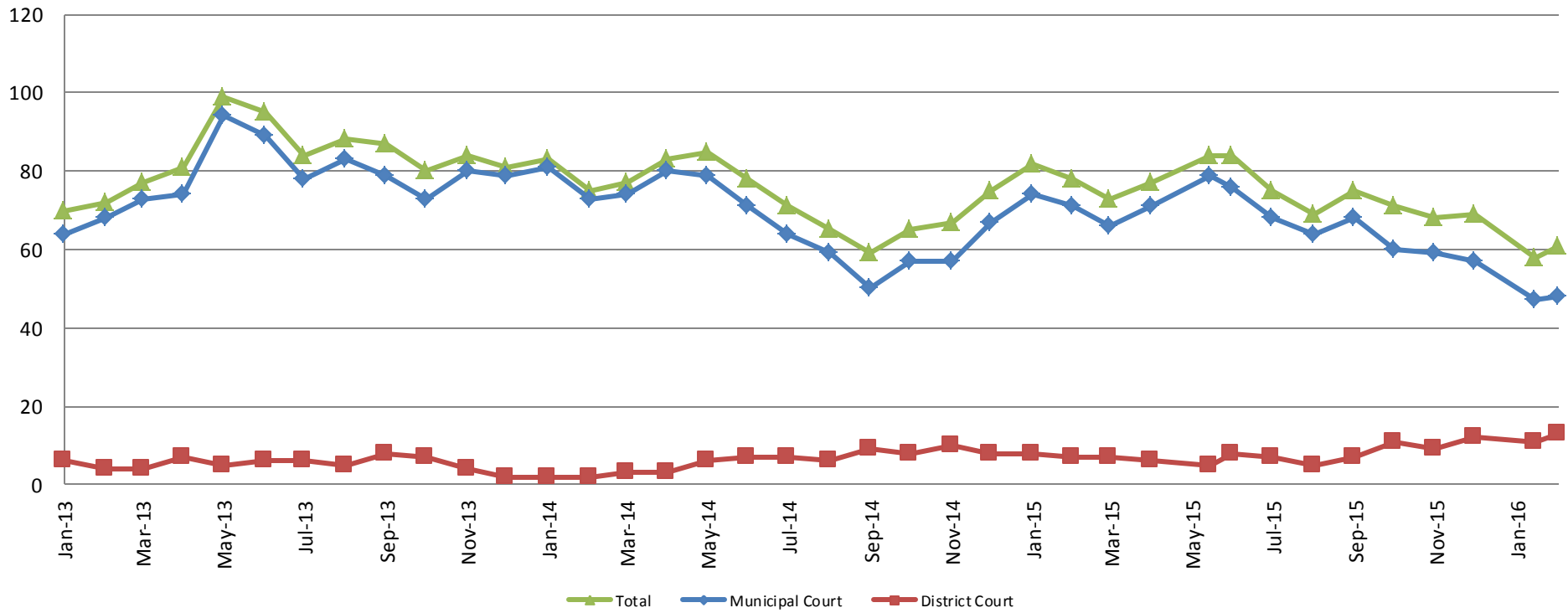
<b>February YTD Average:</b>	<b>2013</b>	<b>2014</b>	<b>2015</b>	<b>2016</b>
SCOAP	151	112	147	157
CoW – MH Court	95	74	119	98



(data obtained from COMCARE)

# Day Reporting - Active Caseload

2013-present



<b>February</b>	<b>2013</b>	<b>2014</b>	<b>2015</b>	<b>2016</b>
Municipal Court	68	73	71	48
District Court	4	2	7	13
<b>TOTAL</b>	<b>72</b>	<b>75</b>	<b>78</b>	<b>61</b>

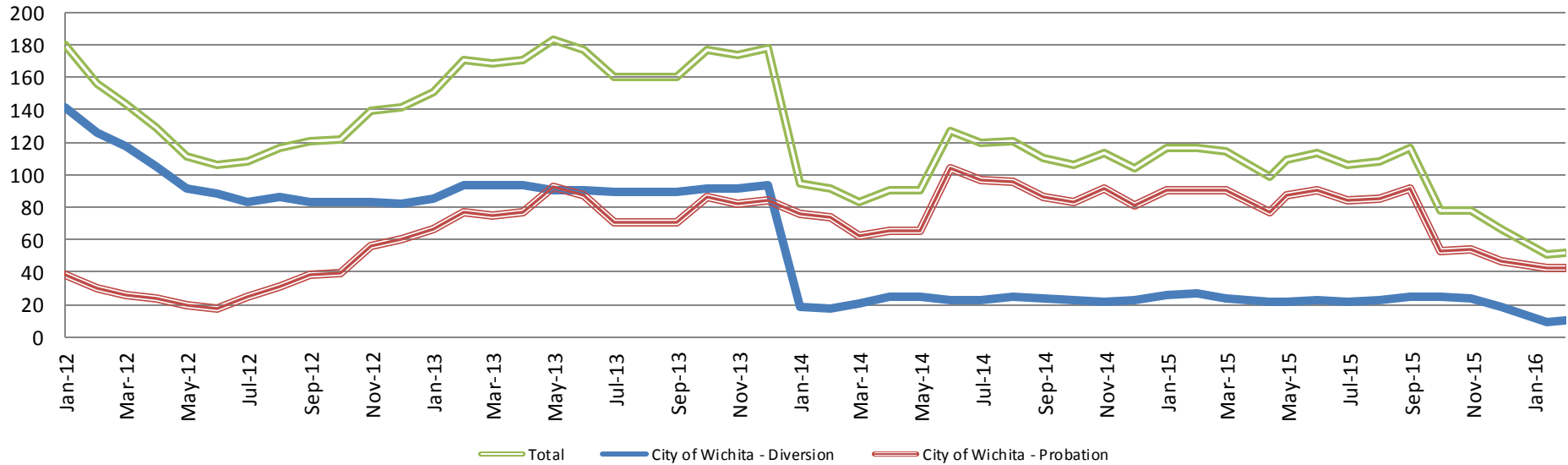
<b>February YTD Avg.</b>	<b>2013</b>	<b>2014</b>	<b>2015</b>	<b>2016</b>
Municipal Court	66	68	73	48
District Court	5	2	8	12
<b>TOTAL</b>	<b>71</b>	<b>79</b>	<b>80</b>	<b>60</b>



(data obtained from Pretrial Services)

# Drug Court

## Drug Court - City of Wichita ADP: 2012 - present



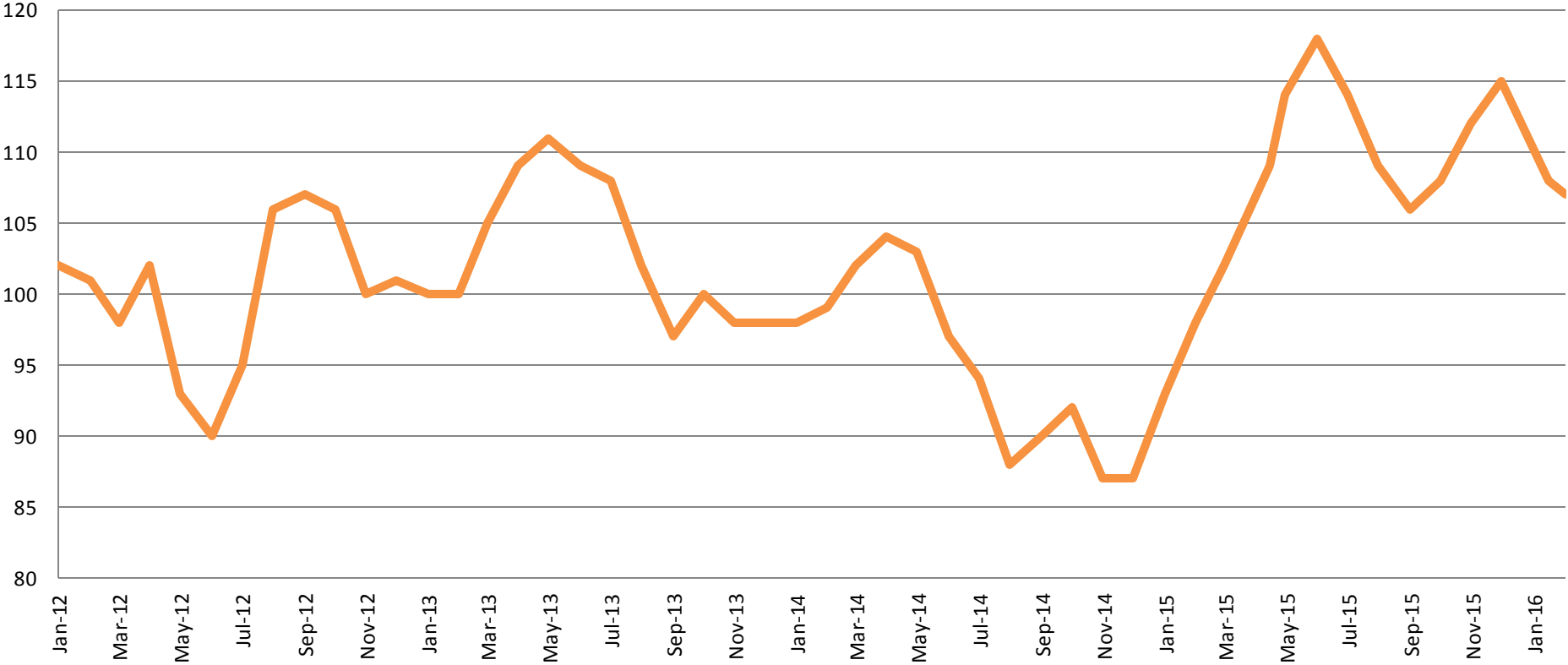
<u>February - CoW Diversion</u>	<u>February YTD Avg.</u>
2013 = 94	2013 = 90
2014 = 18	2014 = 19
2015 = 27	2015 = 27
2016 = 10	2016 = 10

<u>February - CoW Probation</u>	<u>February YTD Avg.</u>
2013 = 77	2013 = 72
2014 = 74	2014 = 75
2015 = 90	2015 = 90
2016 = 42	2016 = 42

<u>February - CoW Total</u>	<u>February YTD Avg.</u>
2013 = 171	2013 = 161
2014 = 92	2014 = 94
2015 = 117	2015 = 117
2016 = 52	2016 = 52

(data obtained from CoW)

# Drug Court - Sedgwick County ADP: 2012 - present



**February- SG CO**

**2012 = 101**  
**2013 = 100**  
**2014 = 99**  
**2015 = 98**  
**2016 = 107**

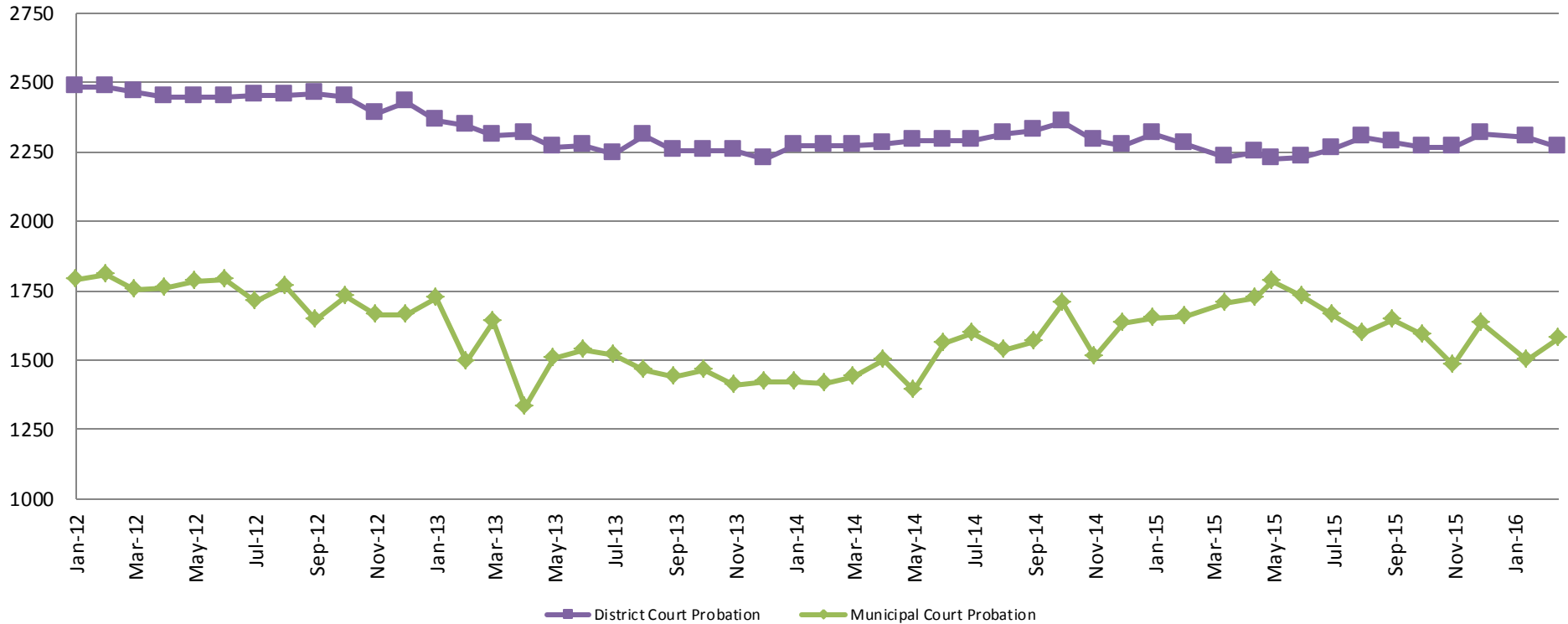
**February YTD Avg.**

**2012 = 102**  
**2013 = 100**  
**2014 = 99**  
**2015 = 96**  
**2016 = 108**

(data obtained from Pretrial Services)

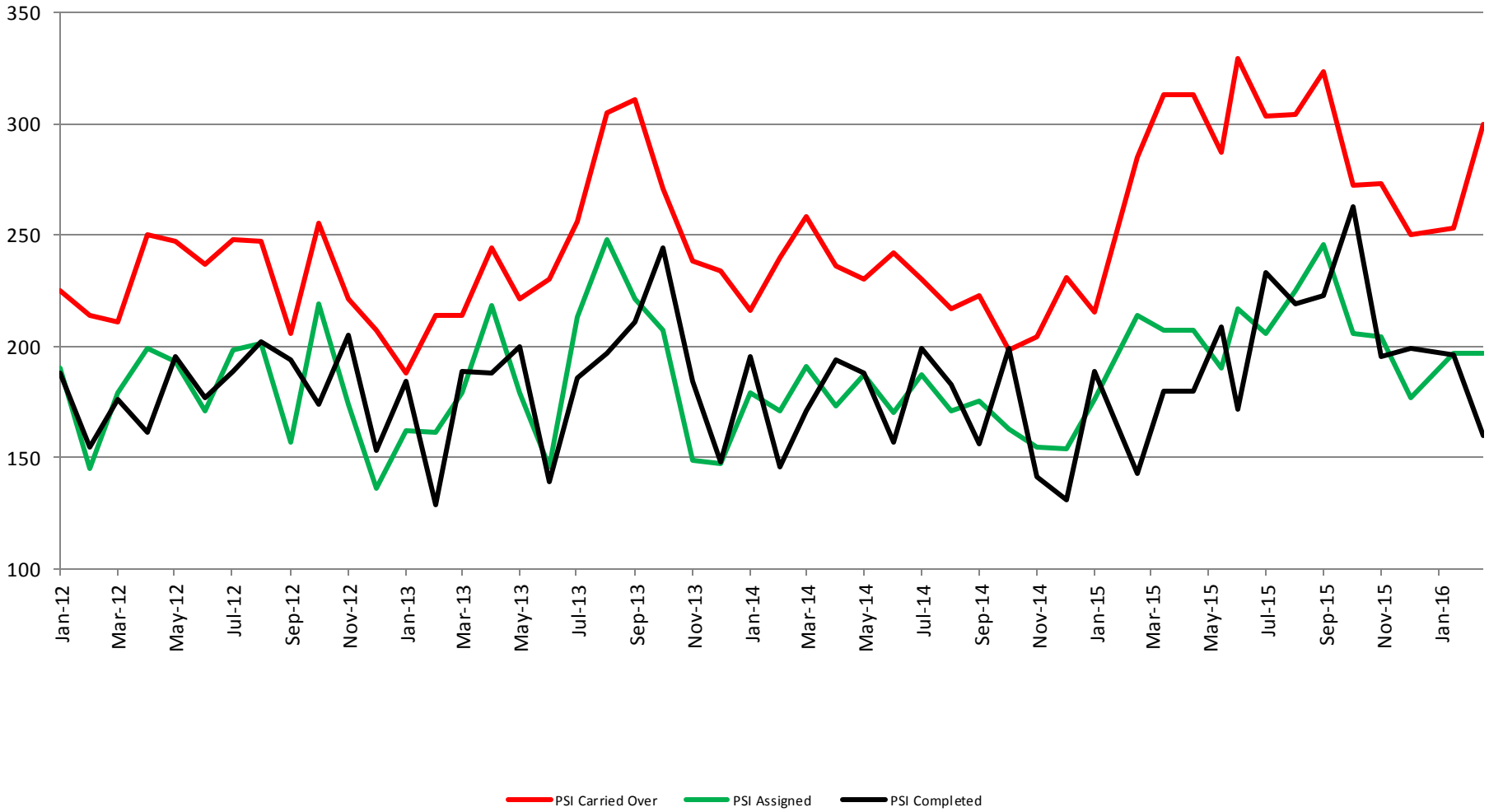


# Probation - Active Caseloads 2012 - present



<b>February :</b>	<b>2013</b>	<b>2014</b>	<b>2015</b>	<b>2016</b>
District Court	2,343	2,271	2,276	2,266
Municipal Court	1,492	1,413	1,659	1,579
<b>February YTD Avg.</b>	<b>2013</b>	<b>2014</b>	<b>2015</b>	<b>2016</b>
District Court	2,353	2,272	2,295	2,285
Municipal Court	1,609	1,417	1,656	1,540

# District Court Probation: Pre-Sentence Investigation 2012 - present

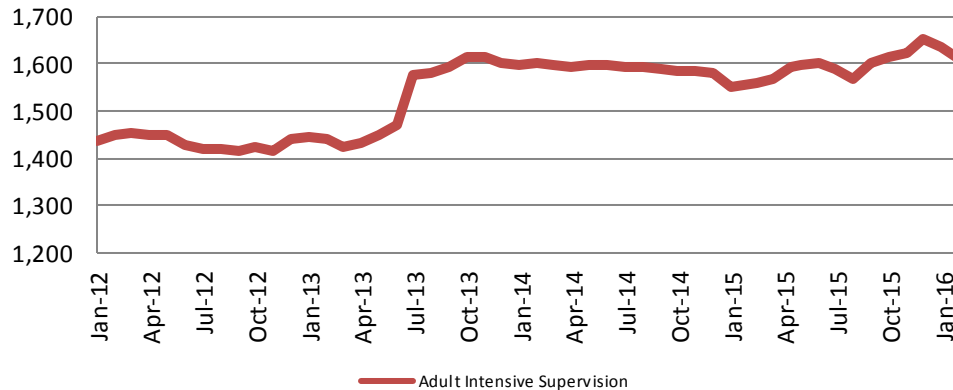


(data obtained from District Court)



# Community Corrections

**Adult Intensive Supervision Probation (AISP) ADP  
2012 - present**



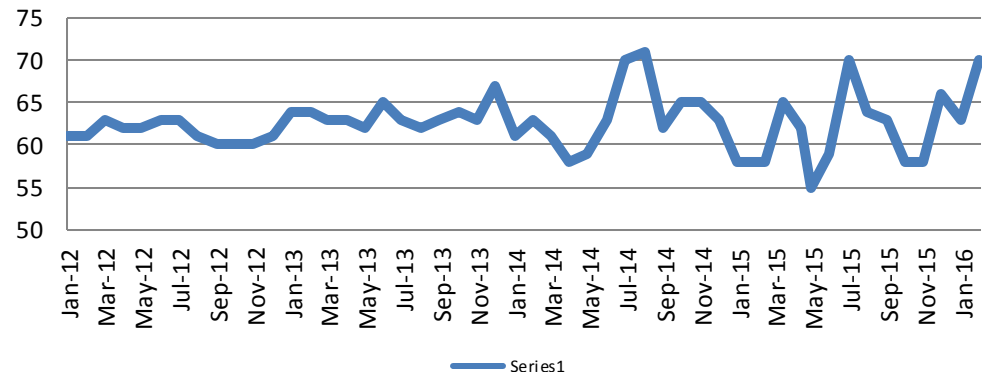
<u>February</u>	<u>February YTD Avg.</u>
2013 = 1,440	2013 = 1,442
2014 = 1,602	2014 = 1,599
2015 = 1,559	2015 = 1,555
2016 = 1,610	2016 = 1,622

(data obtained from SG CO Dept. of Corrections)

\*KDOC changed population count to include drug court, residential and AISP beginning July 2013.

**Adult Residential: ADP  
2012 - present**

<u>February</u>	<u>February YTD Avg.</u>
2013 = 64	2013 = 64
2014 = 63	2014 = 62
2015 = 58	2015 = 58
2016 = 70	2016 = 67

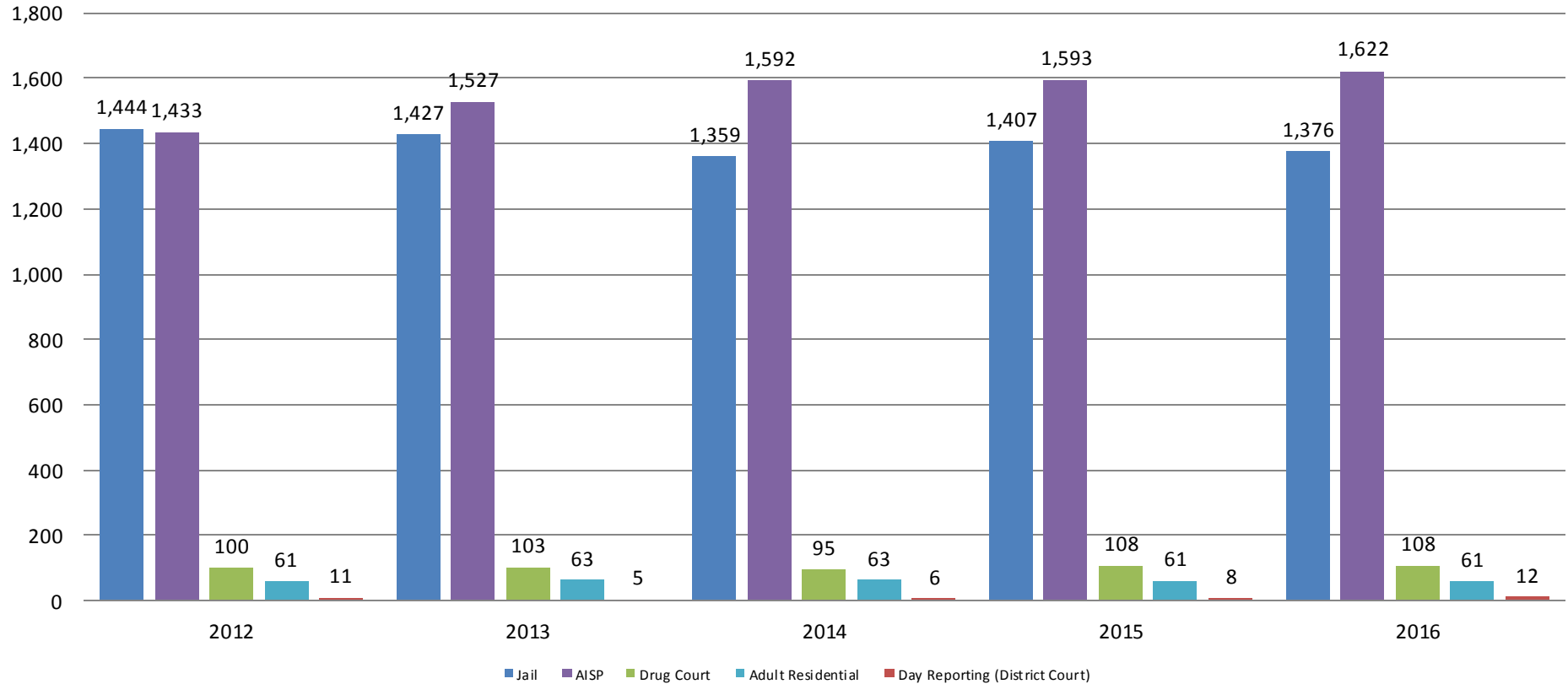


(data obtained from SG CO Dept. of Corrections)

Series1

# Correlation: Total & Sedgwick County Programs (Adult)

## Total Annual ADP: 2012 - Present



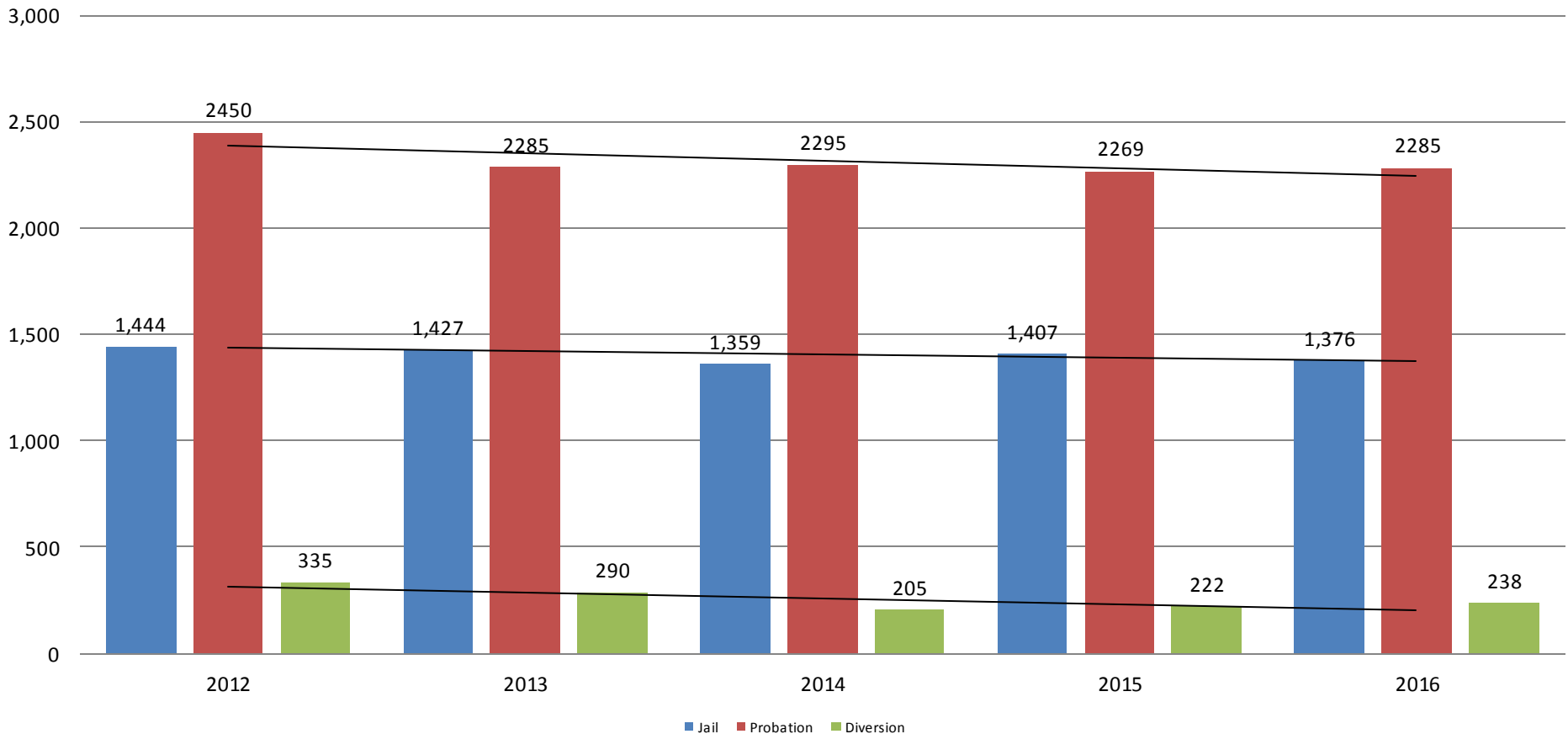
Jail includes individuals in booking, detention, work release and out-of county (combined)

(data obtained from detention facility, SG Dept. of Corrections, Pretrial Services, & CoW)



# Correlation: Total & District Court Programs

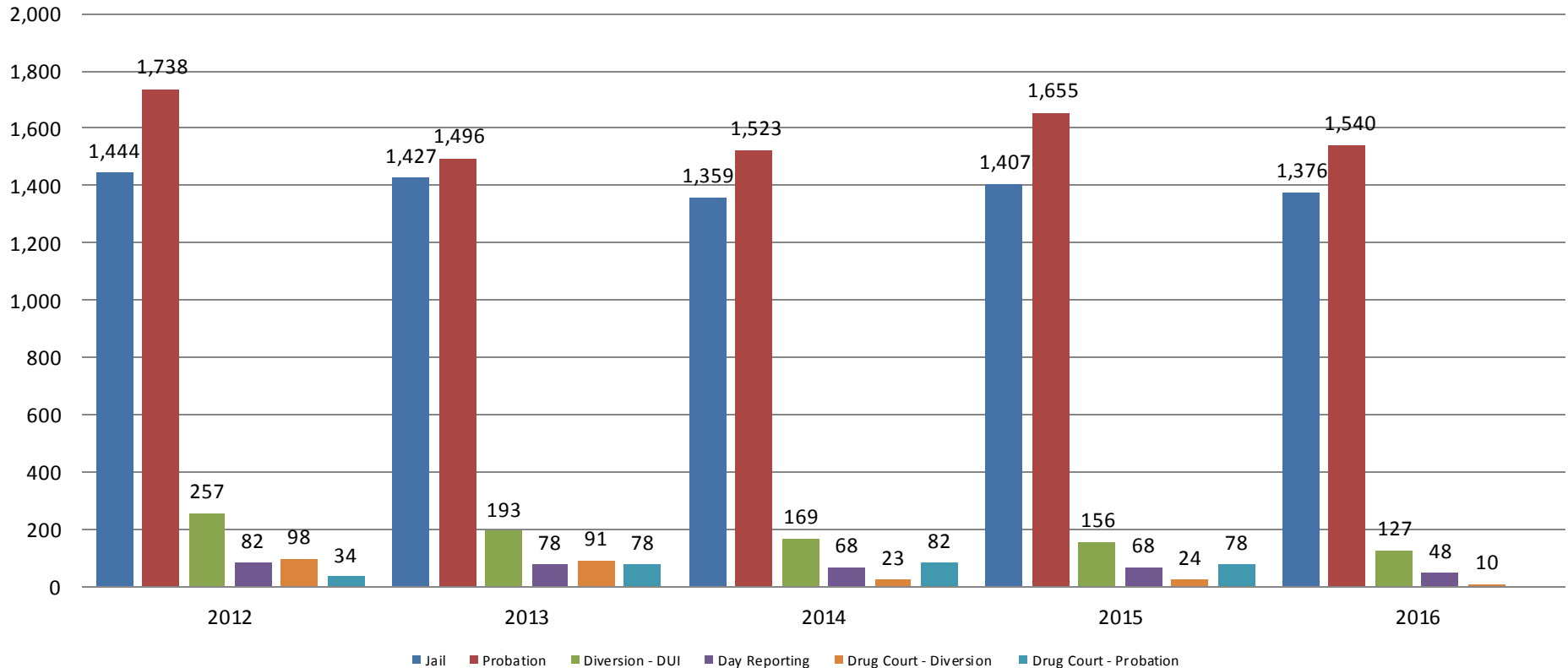
## Total Annual ADP: 2012 - Present



Jail includes individuals in booking, detention, work release and out-of county (combined)

# Correlation: Total & City of Wichita / Municipal Court Programs

## Total Annual ADP: 2012 - present

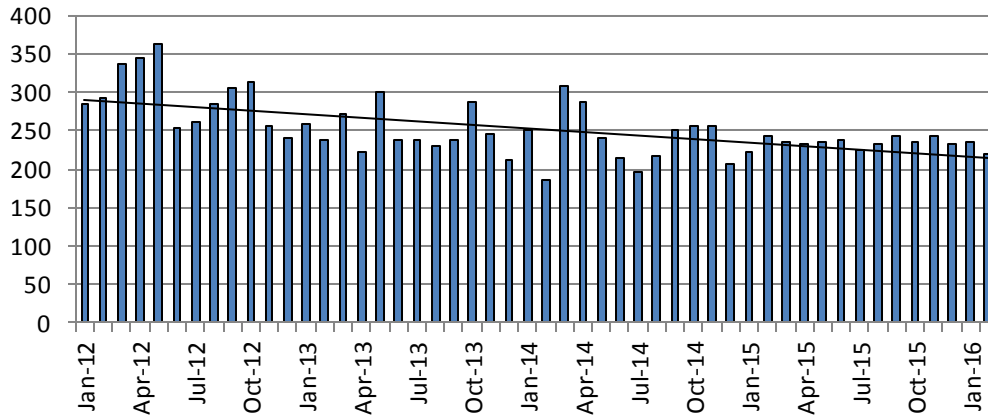


Jail includes individuals in booking, detention, work release and out-of county (combined)



# Juvenile

## JIAC Intakes: 2012 - present



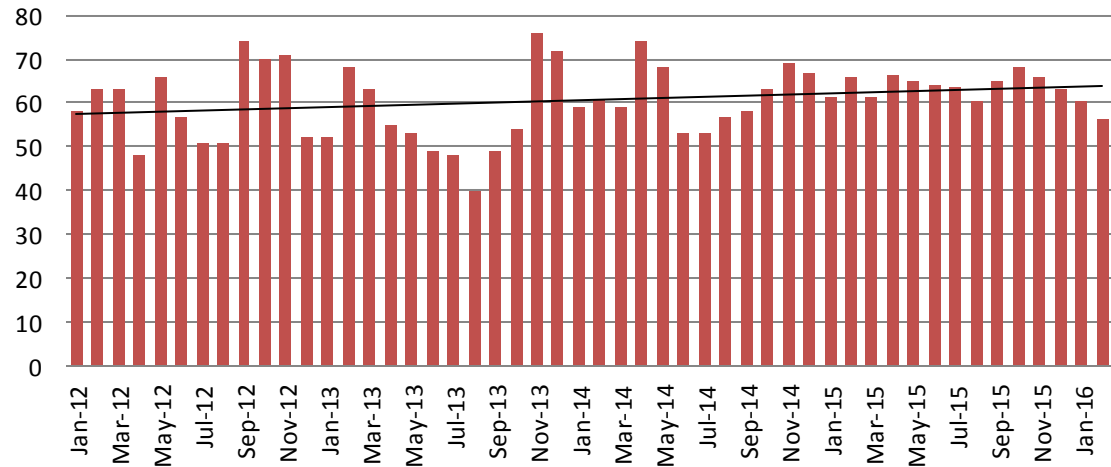
February	February YTD Average
2013 = 238	2013 = 248
2014 = 187	2014 = 219
2015 = 243	2015 = 232
2016 = 219	2016 = 227

(data obtained from SG CO Dept. of Corrections)

## JDF ADP: 2012 - present

February	February YTD Avg.
2013 = 68	2013 = 60
2014 = 61	2014 = 60
2015 = 66	2015 = 63
2016 = 56	2016 = 58

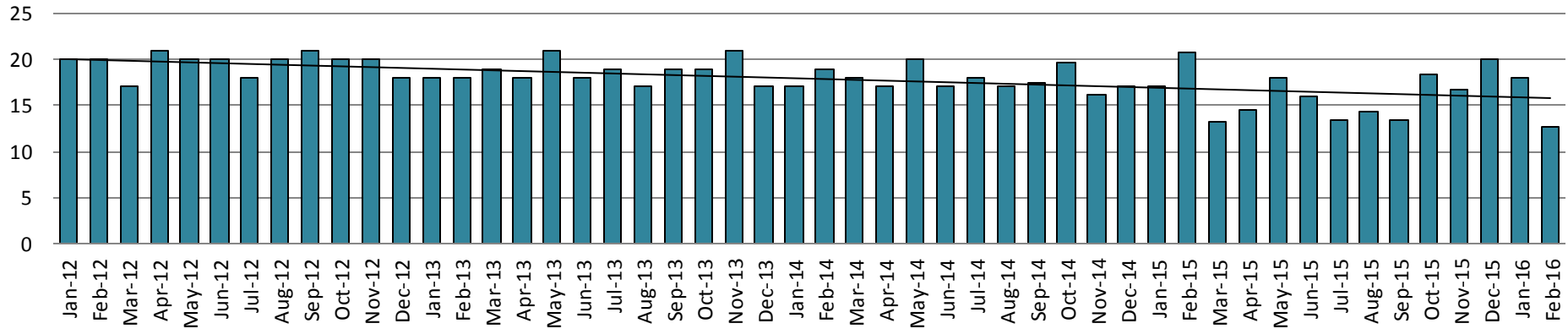
(data obtained from SG CO Dept. of Corrections)



# Juvenile Intervention Services

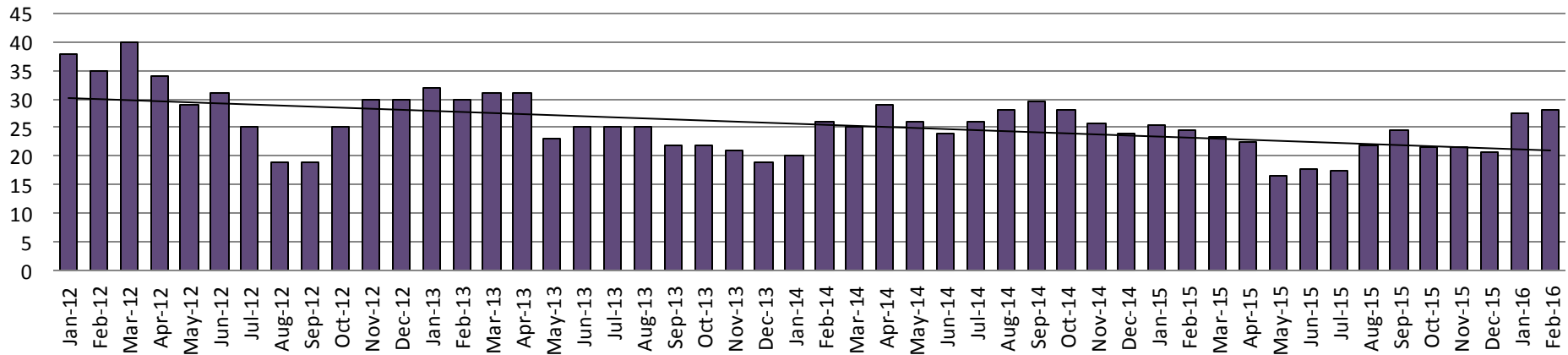
## Juvenile Residential Facility (JRF)

ADP: 2012 - present



## Home-Based Supervision

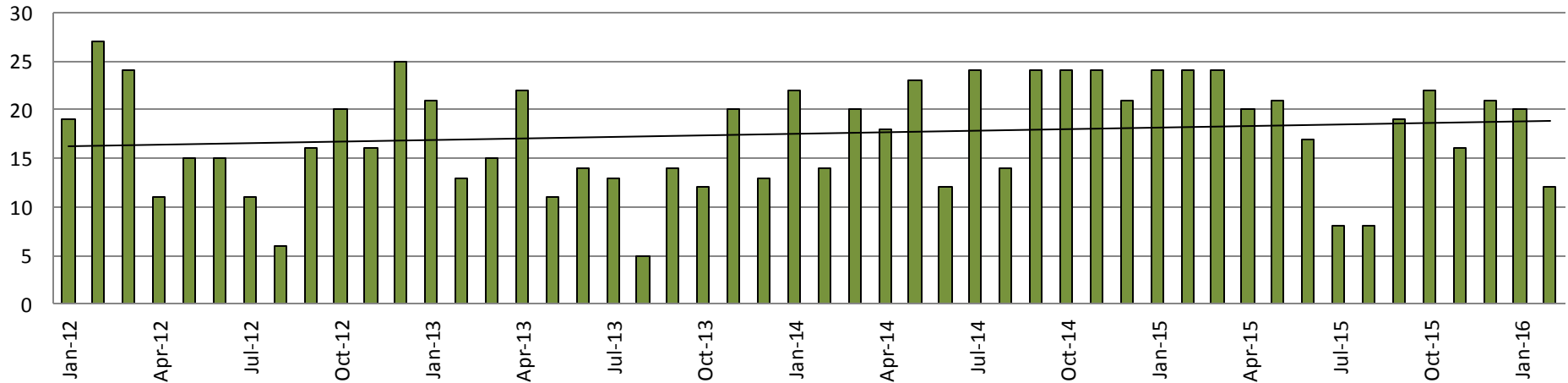
ADP: 2012 - present



# Juvenile Intervention Services

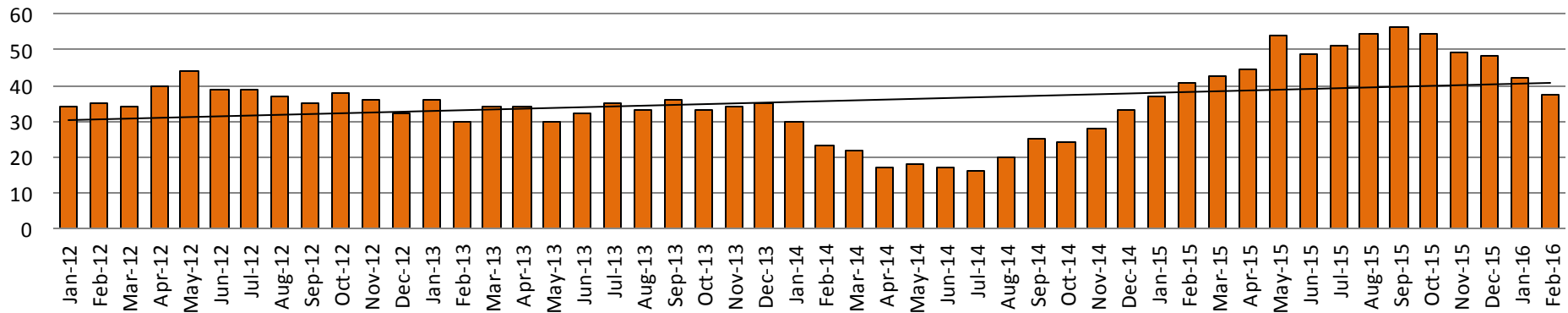
## Weekend Alternative Detention Program

2012 - present



## Detention Advocacy Case Management Services

ADP: 2012 - present



# Juvenile Intervention Services

<b>February ADP</b>	<b>2013</b>	<b>2014</b>	<b>2015</b>	<b>2016</b>
Juvenile Detention Facility	68	61	66	56
Juvenile Residential Facility	18	19	21	13
Home Based Supervision	30	26	26	28
Detention Advocacy Case Management Services	30	23	41	38
Weekend Alternative Detention Program (total)	13	14	24	12

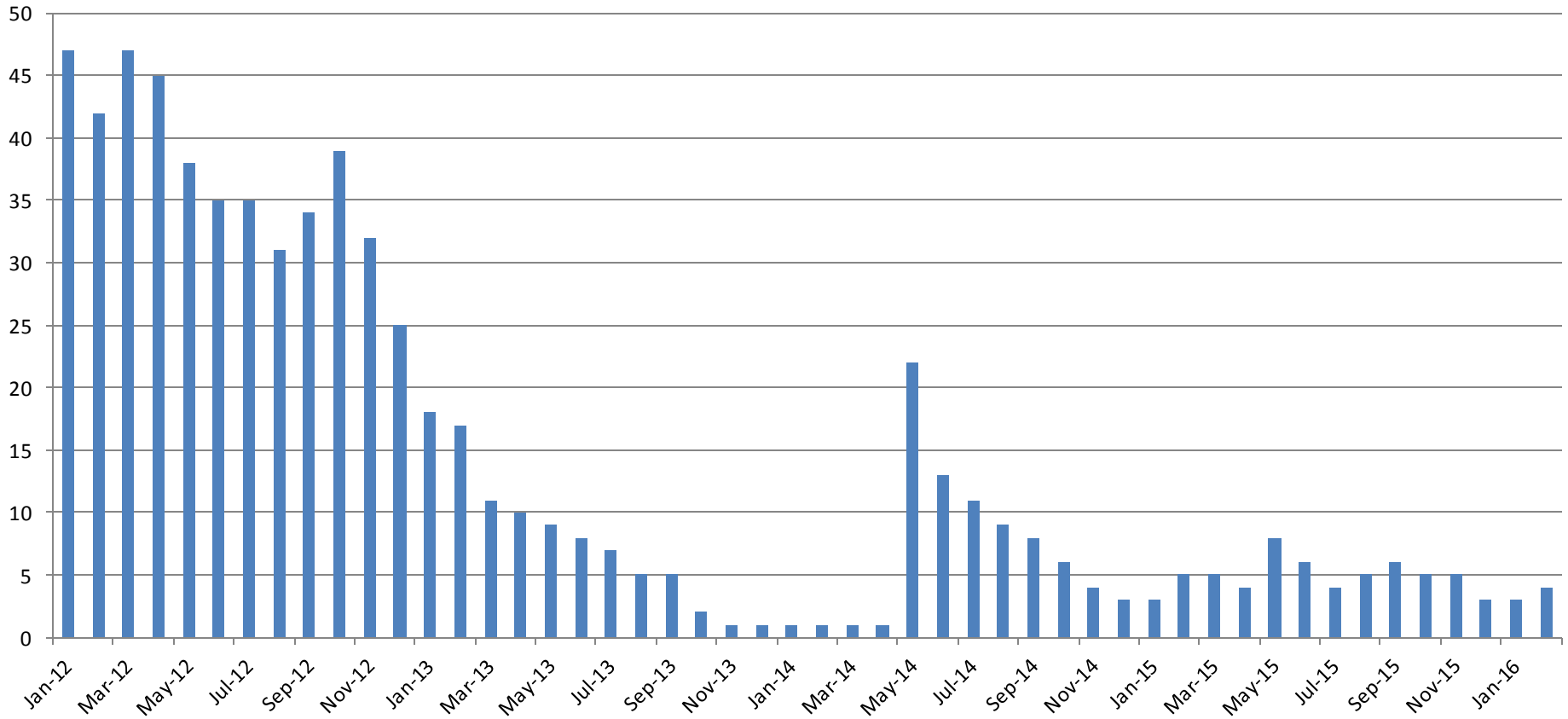
<b>February YTD AVERAGE</b>	<b>2013</b>	<b>2014</b>	<b>2015</b>	<b>2016</b>
Juvenile Detention Facility	60	60	63	58
Juvenile Residential Facility	18	18	19	15
Home Based Supervision	31	23	26	28
Detention Advocacy Case Management Services	33	27	39	40
Weekend Alternative Detention Program	17	18	24	16





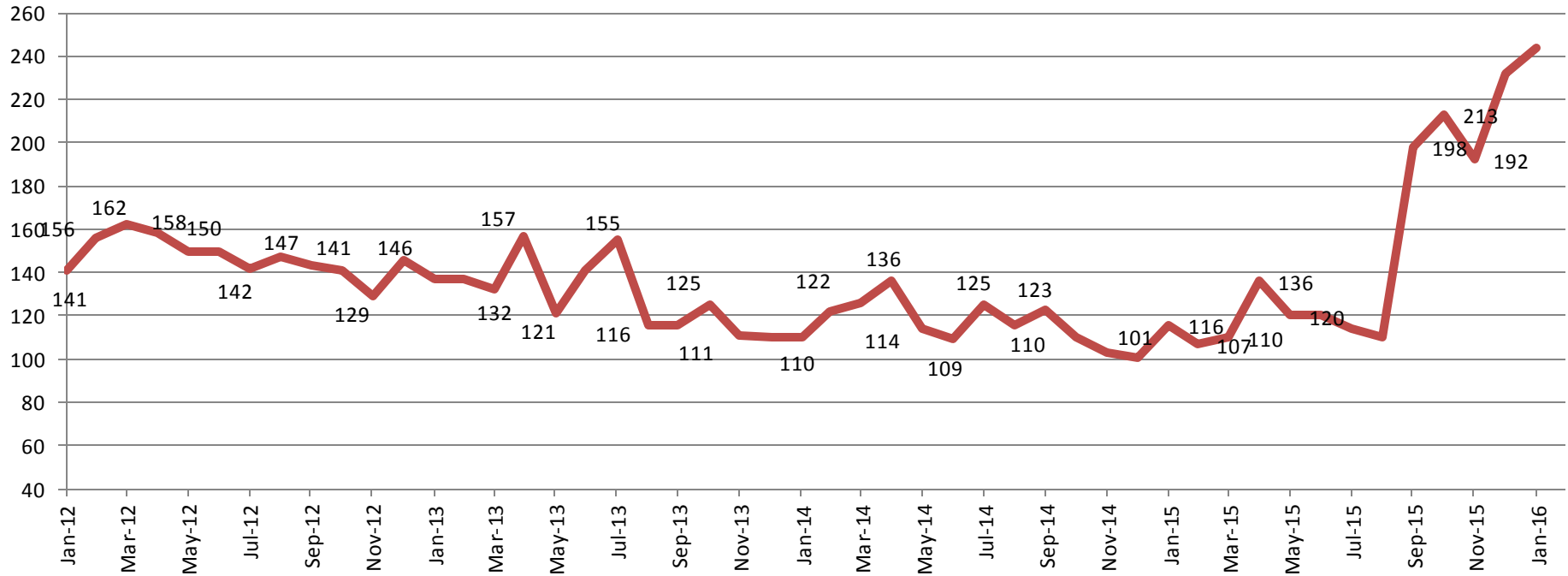
# Monthly Jail Snapshot

## BICE Holds 2012-Present



# Monthly Jail Snapshot

## Felony Commitments: February 2012 - present



### February:

2012 = 141

2013 = 137

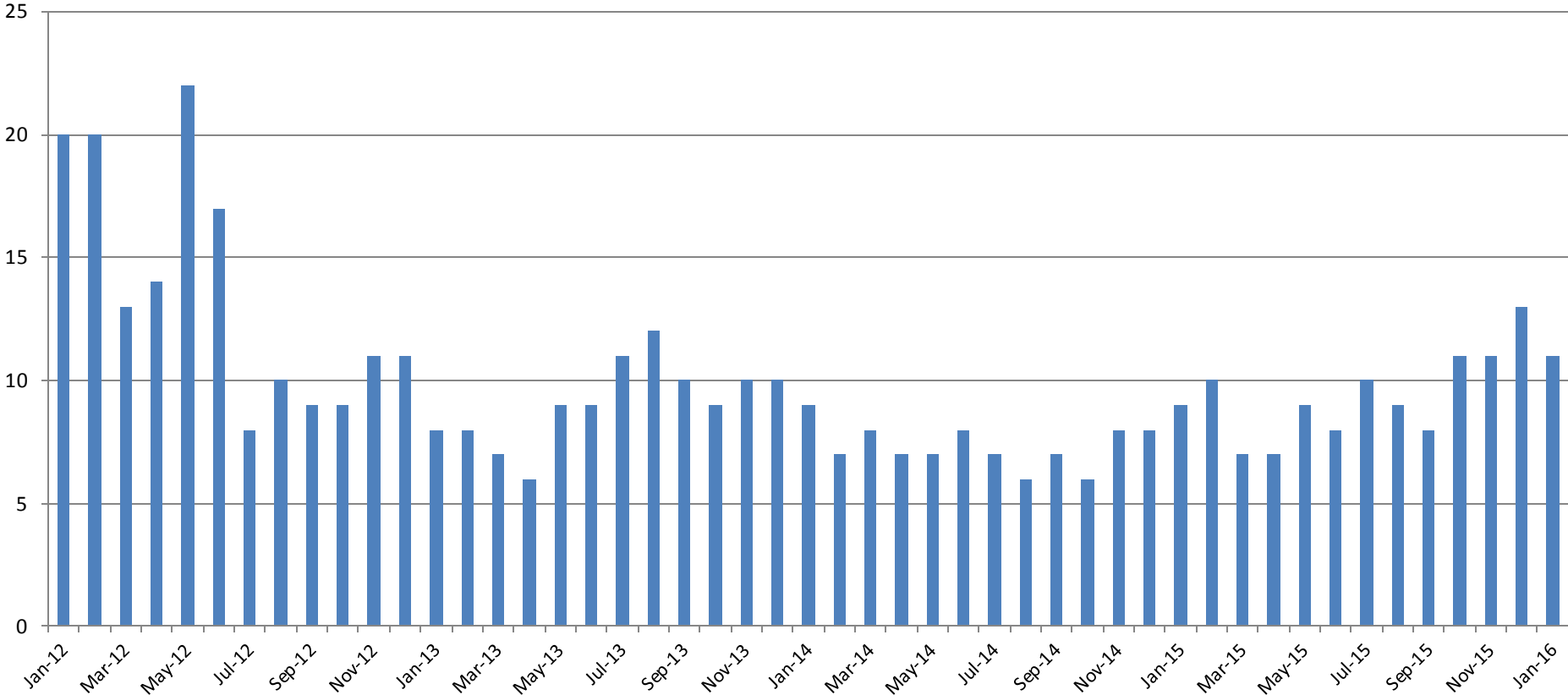
2014 = 110

2015 = 116

2016 = 244



# Journal Entry Completion (Average Days) January 2013-Present



This data is always reported a month behind