

# Criminal Justice Coordinating Council

## Population Report & Program Trends

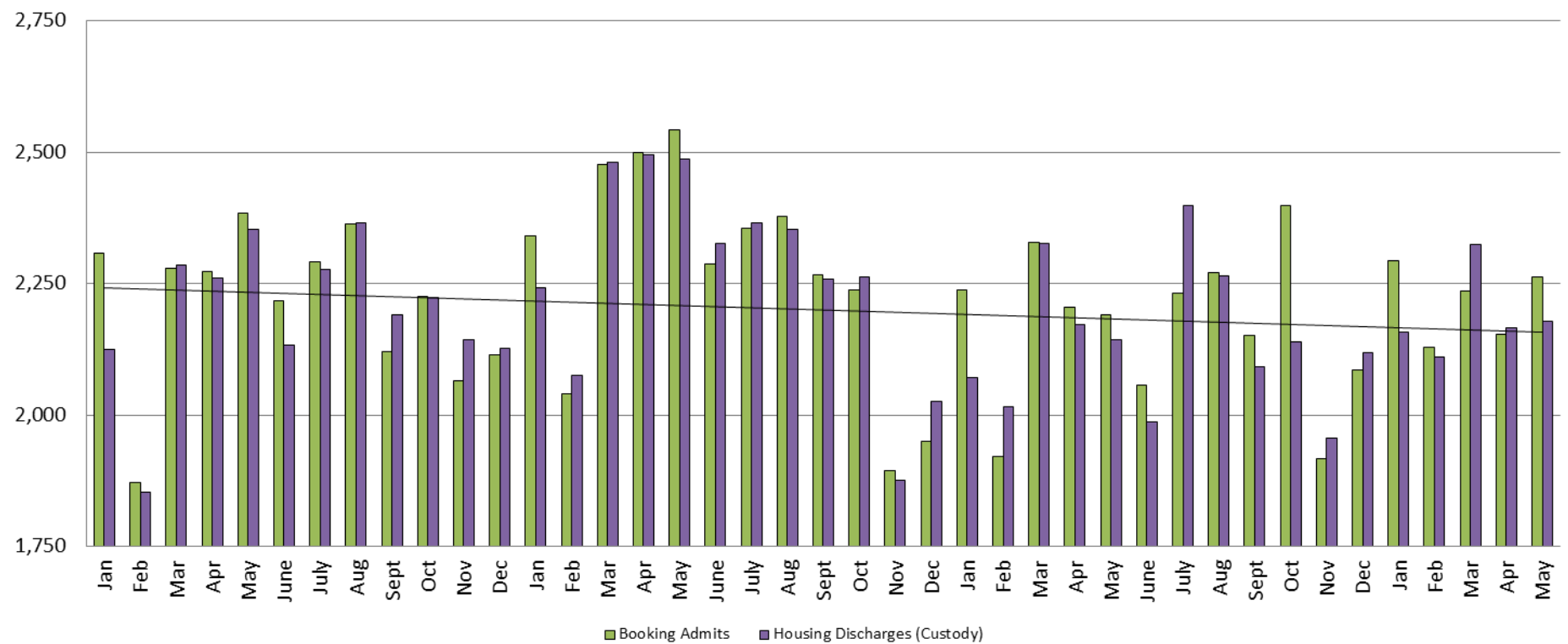
June 23, 2016



*Sedgwick County...*  
*working for you*

# Detention Facility

## Booking Admits & Housing Discharges from Custody January 2013 - Present



### Housing Discharges for May

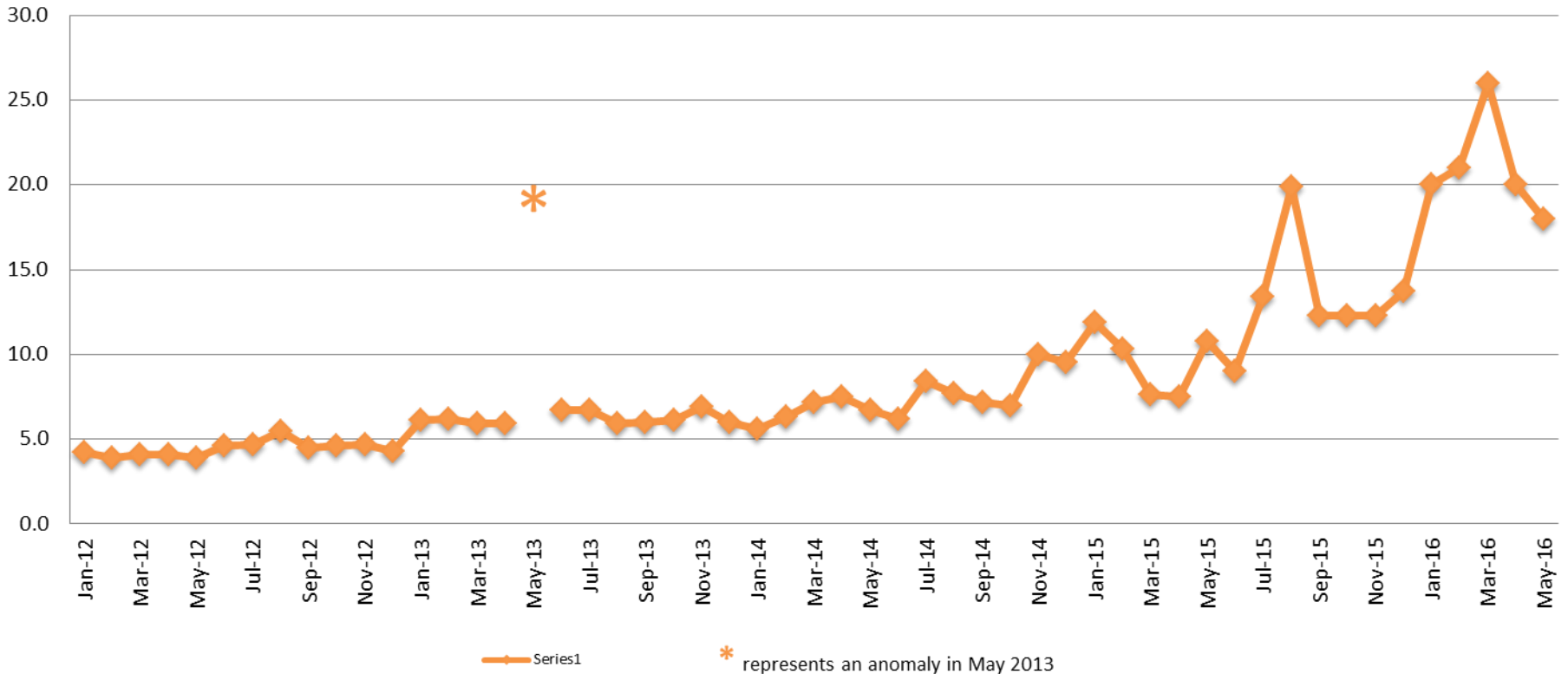
2014 = 2,486  
 2015 = 2,143  
 2016 = 2,178

### Bookings for May

2014 = 2,543  
 2015 = 2,191  
 2016 = 2,262

# Average Length of Stay: Booking (Hours)

## January 2012 - Present



### May

2012 = 3.9  
 2013 = 16.2  
 2014 = 6.7  
 2015 = 10.8  
 2016 = 18.0

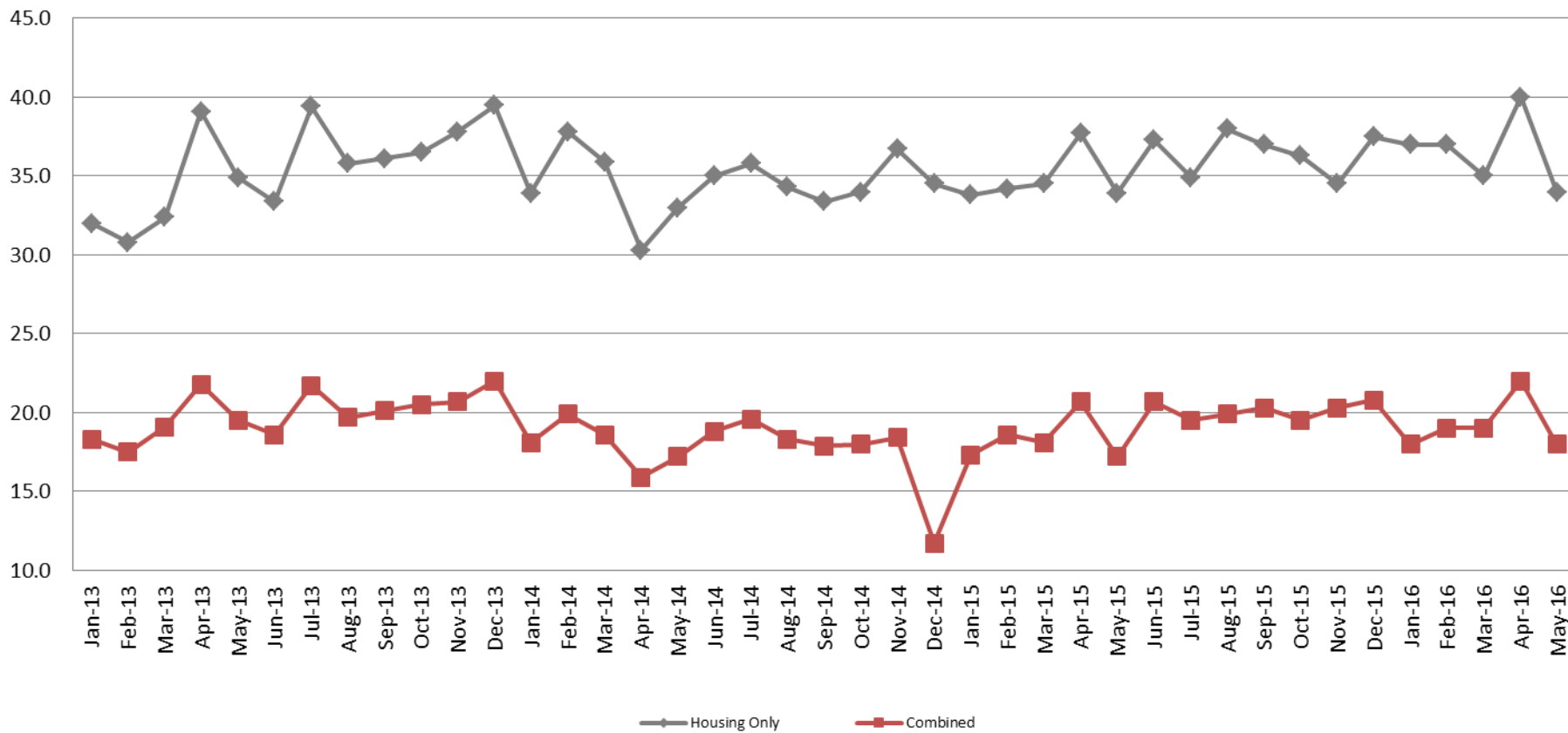
### May YTD Avg.

2012 = 4.0  
 2013 = 8.1  
 2014 = 6.7  
 2015 = 9.6  
 2016 = 21.0

(data obtained from detention facility)

# Average Length of Stay: Housing & Combined (Days)

January 2013 - Present



## May Housing

2013 = 34.9  
 2014 = 33.0  
 2015 = 33.9  
 2016 = 34.0

## May Housing YTD Avg.

2013 = 33.8  
 2014 = 34.2  
 2015 = 34.8  
 2016 = 36.6

## May Combined

2013 = 19.5  
 2014 = 17.2  
 2015 = 17.2  
 2016 = 18.0

## May Combined YTD Avg.

2013 = 19.2  
 2014 = 17.9  
 2015 = 18.4  
 2016 = 19.2

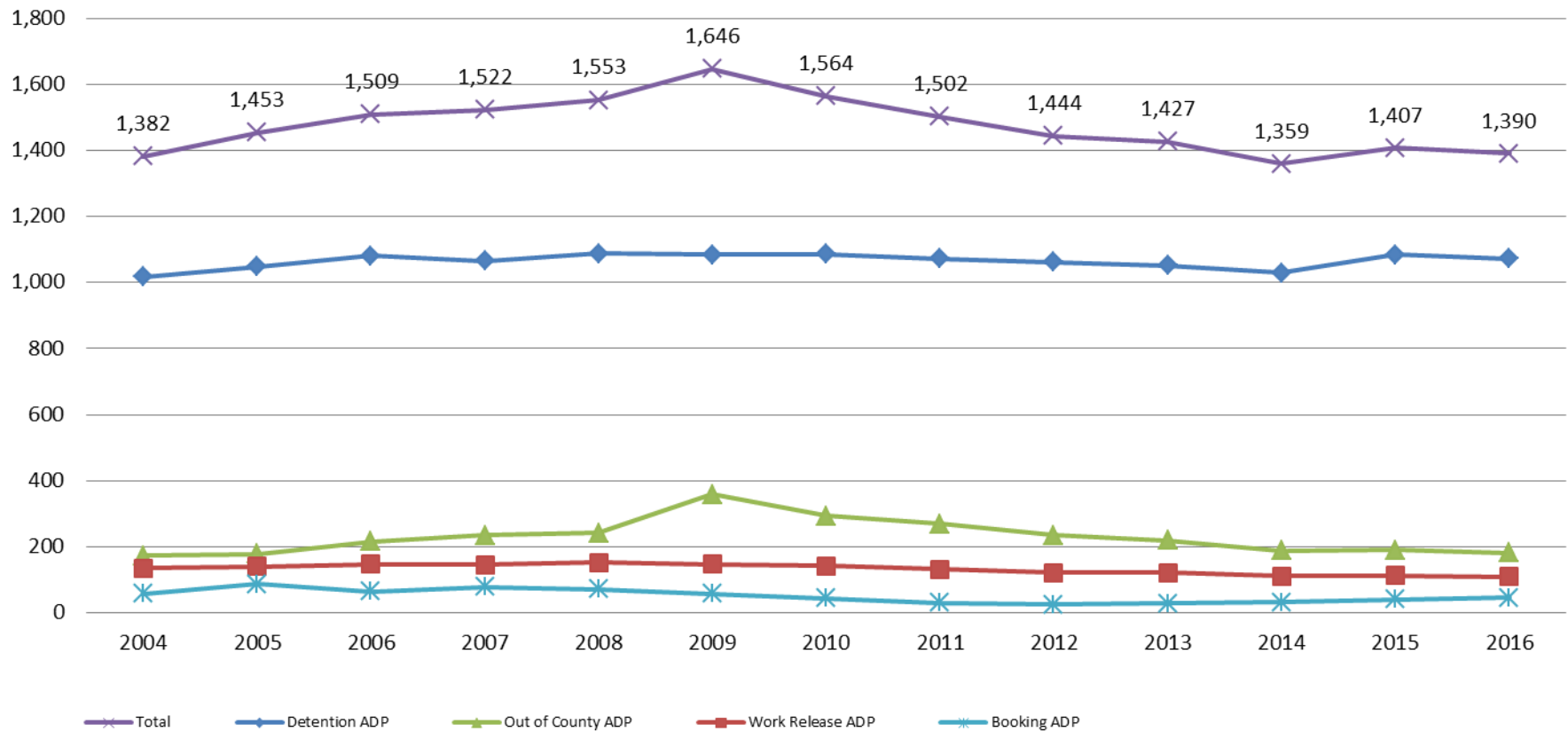


Sedgwick County...  
 working for you

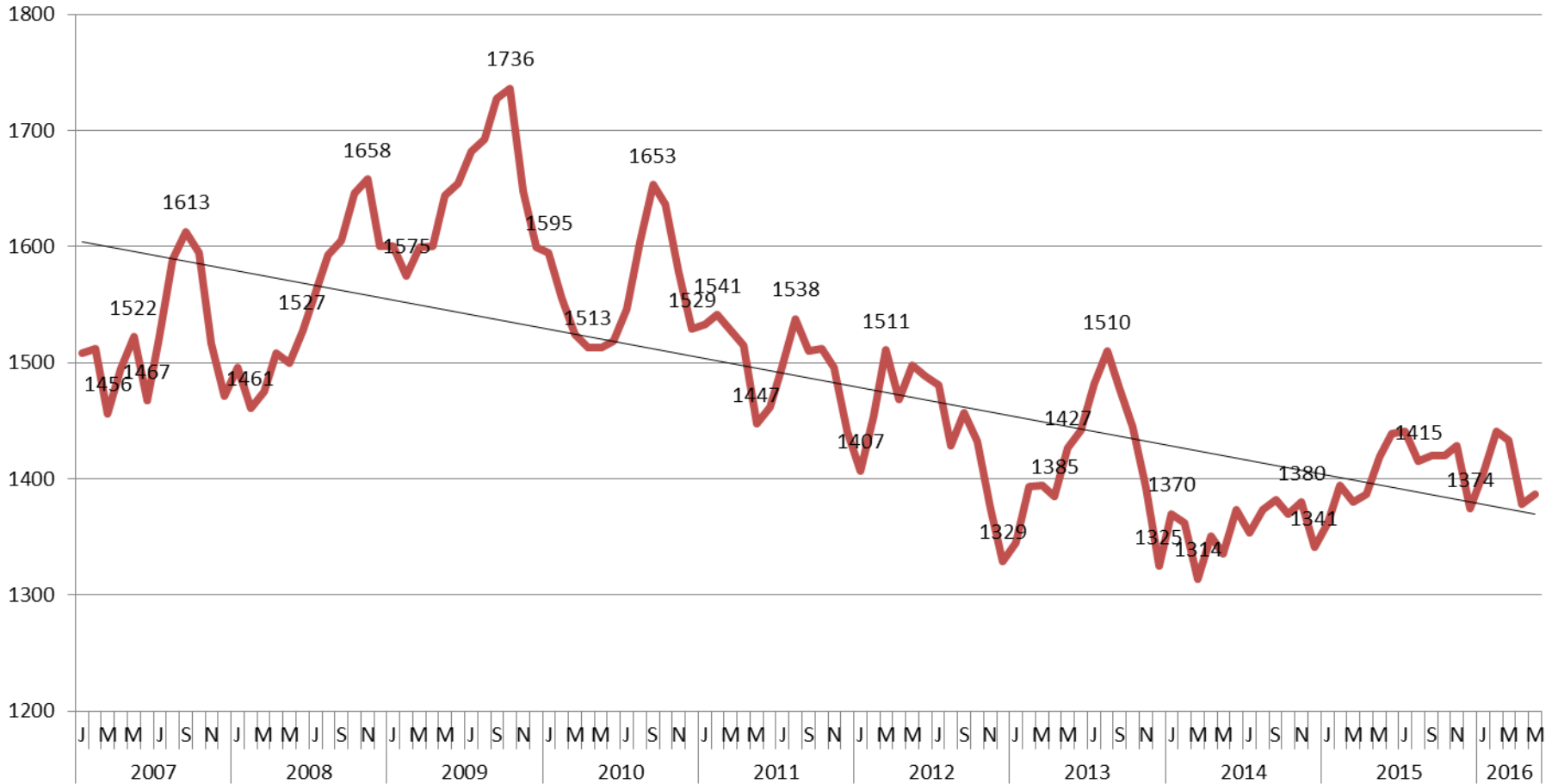
(data obtained from detention facility)

# Jail: Annual Average Daily Population (ADP)

**TRENDS: Booking, Detention, Work Release, & Out of County Annual ADP: 2004 - present**



# TOTAL MONTHLY ADP: JAIL (Booking, Detention Facility, Work Release, & Out of County) 2007 - present



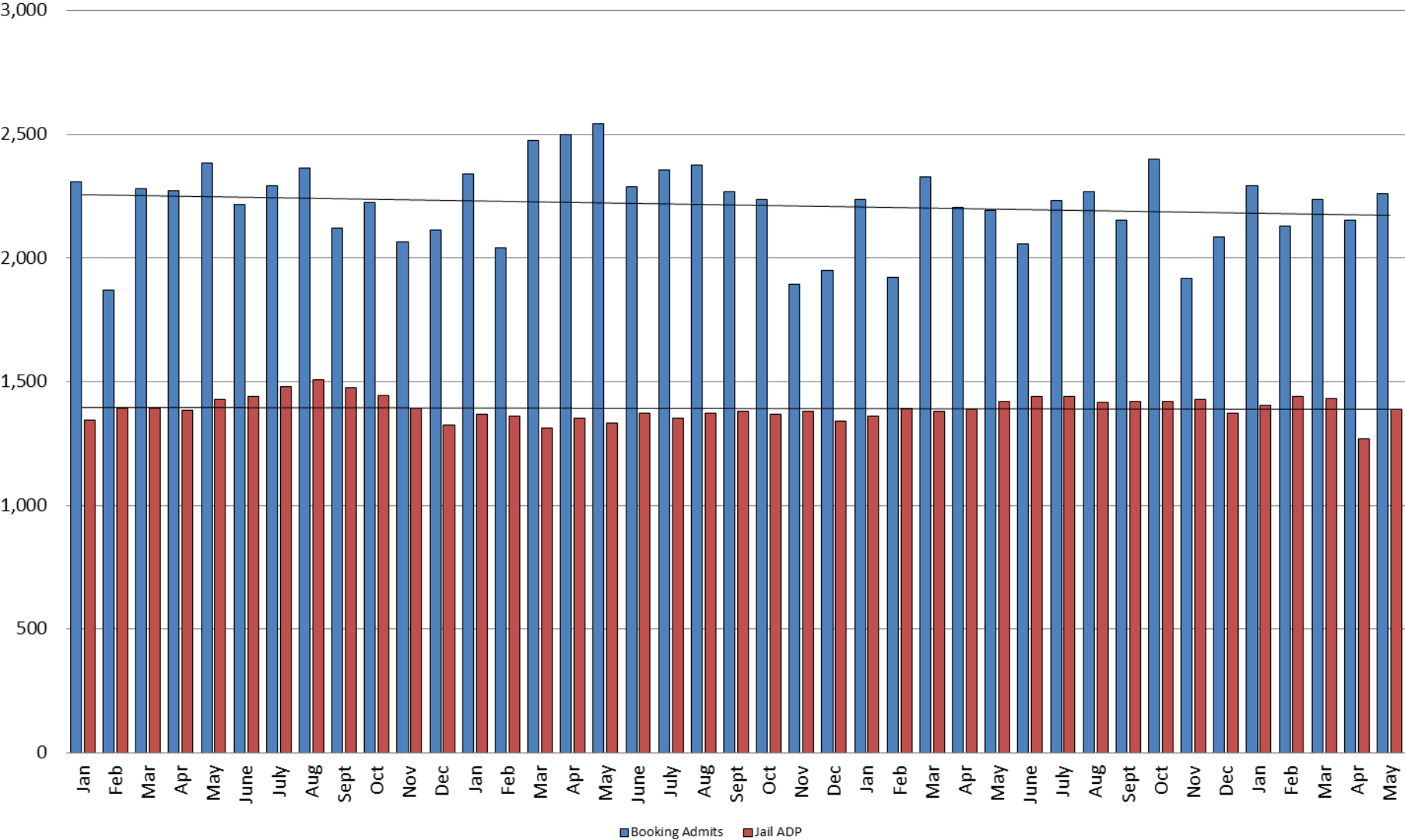
This slide shows total monthly ADP for individuals in booking, detention, work release and out-of county (combined)



*Sedgwick County...  
working for you*

(data obtained from detention facility)

# Booking Admits & Total Monthly ADP (Jail): 2013 - present

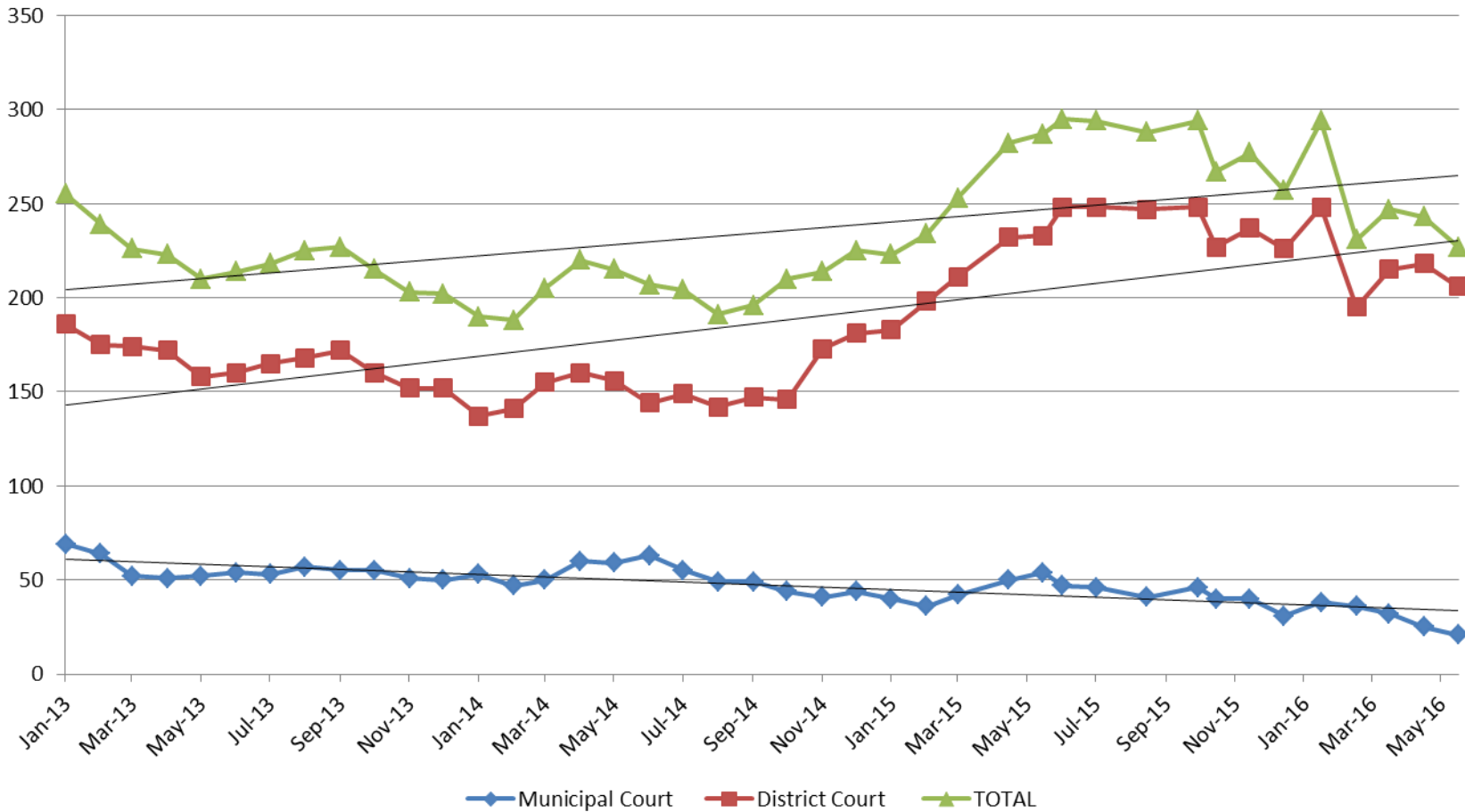


Jail includes individuals in booking, detention, work release and out-of county (combined)

(data obtained from detention facility)



# Pretrial Services Program (PSP) Monthly ADP January 2013 - Present



<b>May</b>	<b>2013</b>	<b>2014</b>	<b>2015</b>	<b>2016</b>	<b>May YTD Avg.</b>	<b>2013</b>	<b>2014</b>	<b>2015</b>	<b>2016</b>
Municipal Court	52	59	54	21	Municipal Court	58	54	44	30
District Court	158	156	233	206	District Court	173	150	211	216
<b>TOTAL</b>	<b>210</b>	<b>215</b>	<b>287</b>	<b>227</b>	<b>TOTAL</b>	<b>231</b>	<b>204</b>	<b>256</b>	<b>248</b>

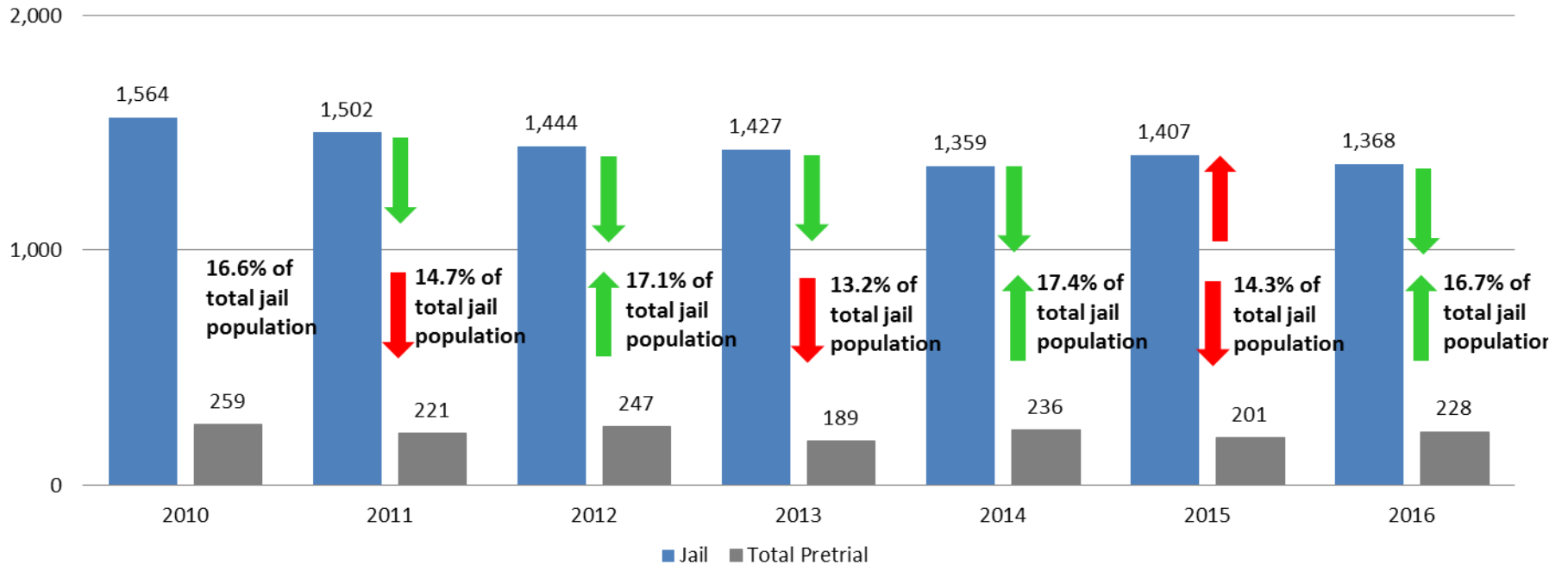


(data obtained from Pretrial Services)



# Correlation: Total & PSP

## Total Annual ADP: 2010 - Present



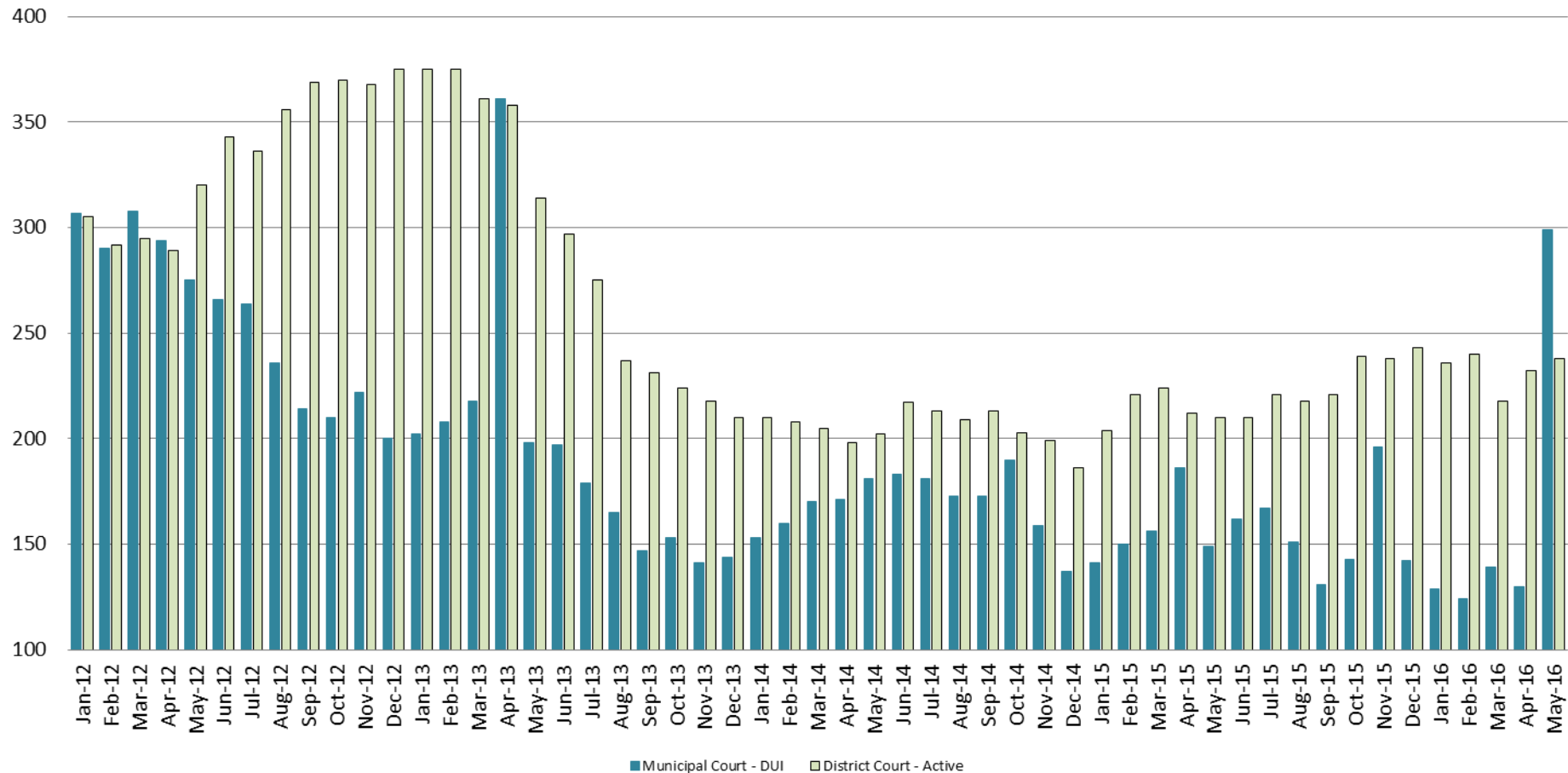
Arrows represent the overall increase/decrease of the population from year to year

Jail includes individuals in booking, detention, work release and out-of county (combined)



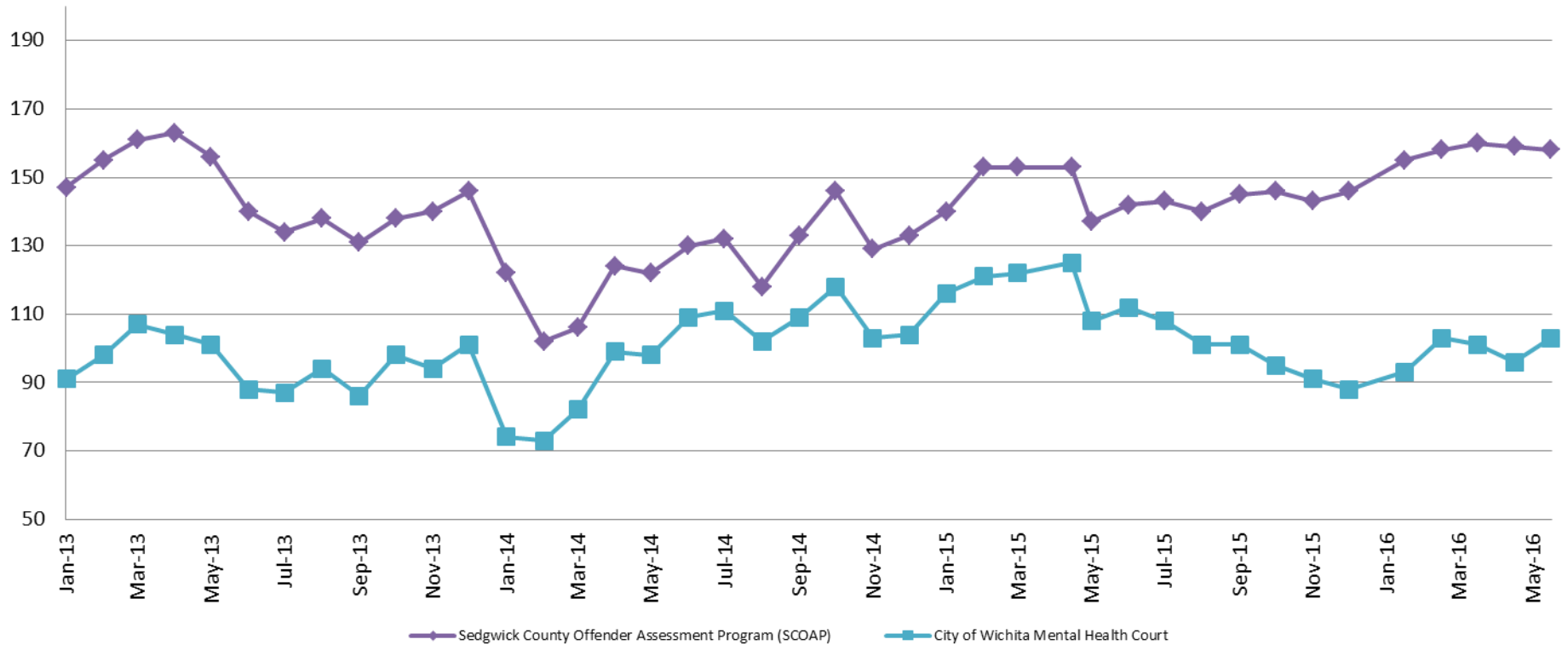
# Diversion - Active Caseload

January 2012 - Present



<u>May</u>	<u>2013</u>	<u>2014</u>	<u>2015</u>	<u>2016</u>	<u>May YTD Avg.</u>	<u>2013</u>	<u>2014</u>	<u>2015</u>	<u>2016</u>
Municipal Court- DUI	198	181	149	299	Municipal Court	237	167	156	164
District Court- Active	314	202	210	238	District Court	357	205	214	233

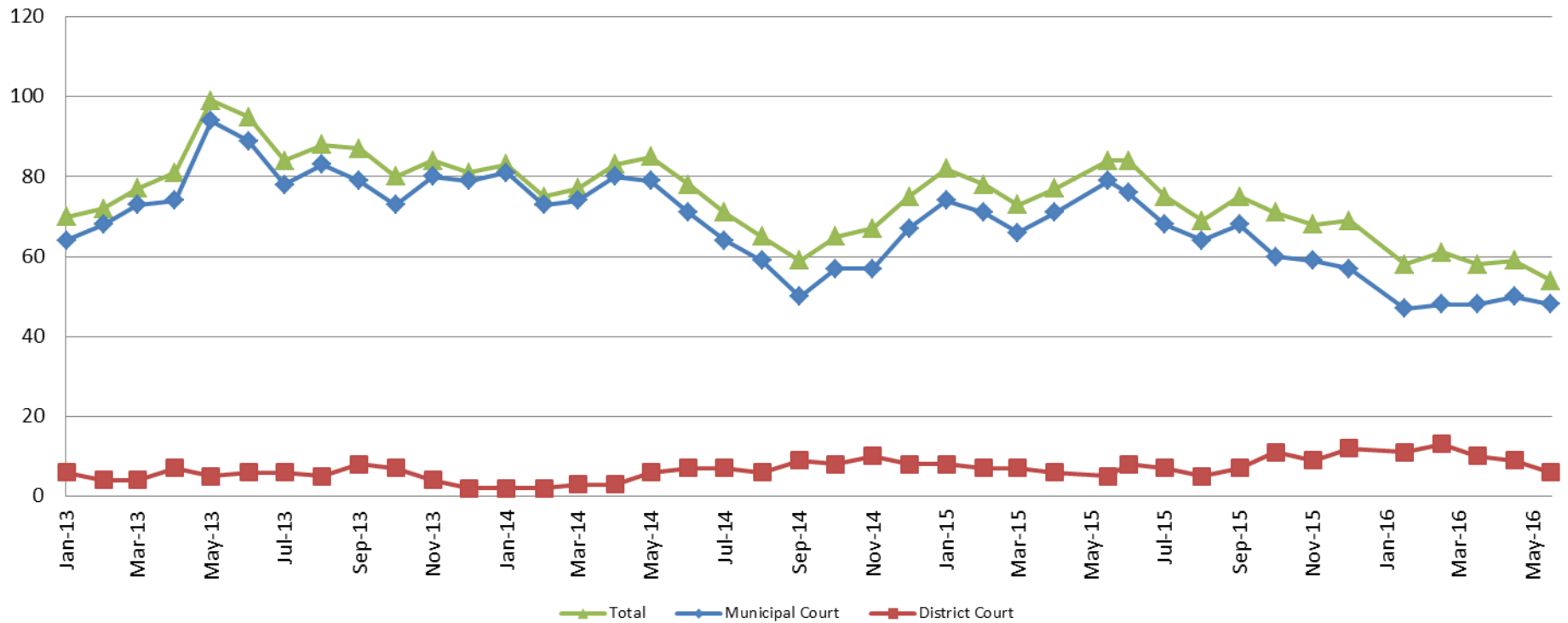
# Mental Health - ADP 2013 - present



<b>May:</b>	<b>2013</b>	<b>2014</b>	<b>2015</b>	<b>2016</b>
SCOAP	156	122	137	158
CoW – MH Court	101	98	108	103
<b>May YTD Avg.</b>	<b>2013</b>	<b>2014</b>	<b>2015</b>	<b>2016</b>
SCOAP	156	115	147	158
CoW – MH Court	100	85	118	99

# Day Reporting - Active Caseload

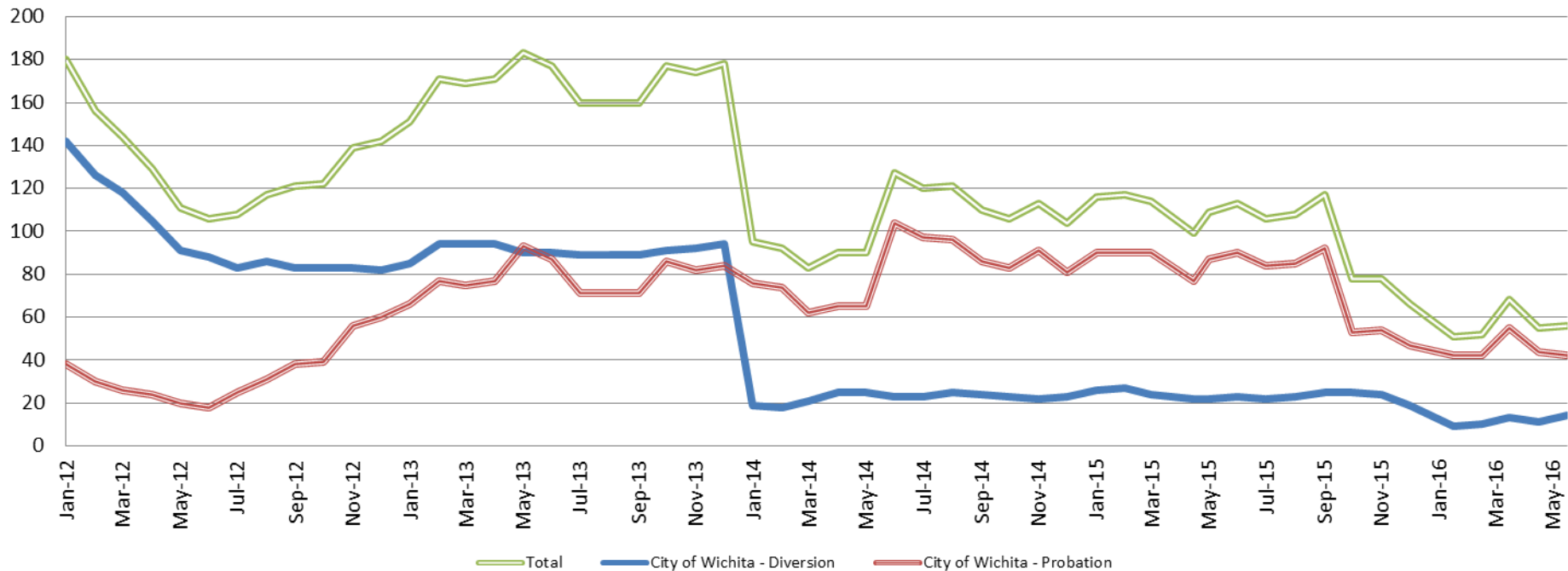
2013-present



<u>May</u>	<u>2013</u>	<u>2014</u>	<u>2015</u>	<u>2016</u>
Municipal Court	94	79	79	48
District Court	5	6	5	6
<b>TOTAL</b>	<b>99</b>	<b>85</b>	<b>84</b>	<b>54</b>
<u>May YTD Avg.</u>	<u>2013</u>	<u>2014</u>	<u>2015</u>	<u>2016</u>
Municipal Court	75	77	72	48
District Court	5	3	7	10
<b>TOTAL</b>	<b>80</b>	<b>81</b>	<b>79</b>	<b>58</b>

# Drug Court - City of Wichita

## ADP: 2012 - present



### May - CoW Diversion

**2013 = 90**  
**2014 = 25**  
**2015 = 22**  
**2016 = 14**

### May YTD Avg.

**2013 = 91**  
**2014 = 22**  
**2015 = 24**  
**2016 = 11**

### May - CoW Probation

**2013 = 93**  
**2014 = 65**  
**2015 = 87**  
**2016 = 42**

### May YTD Avg.

**2013 = 78**  
**2014 = 68**  
**2015 = 87**  
**2016 = 45**

### May - CoW Total

**2013 = 183**  
**2014 = 90**  
**2015 = 109**  
**2016 = 56**

### May YTD Avg.

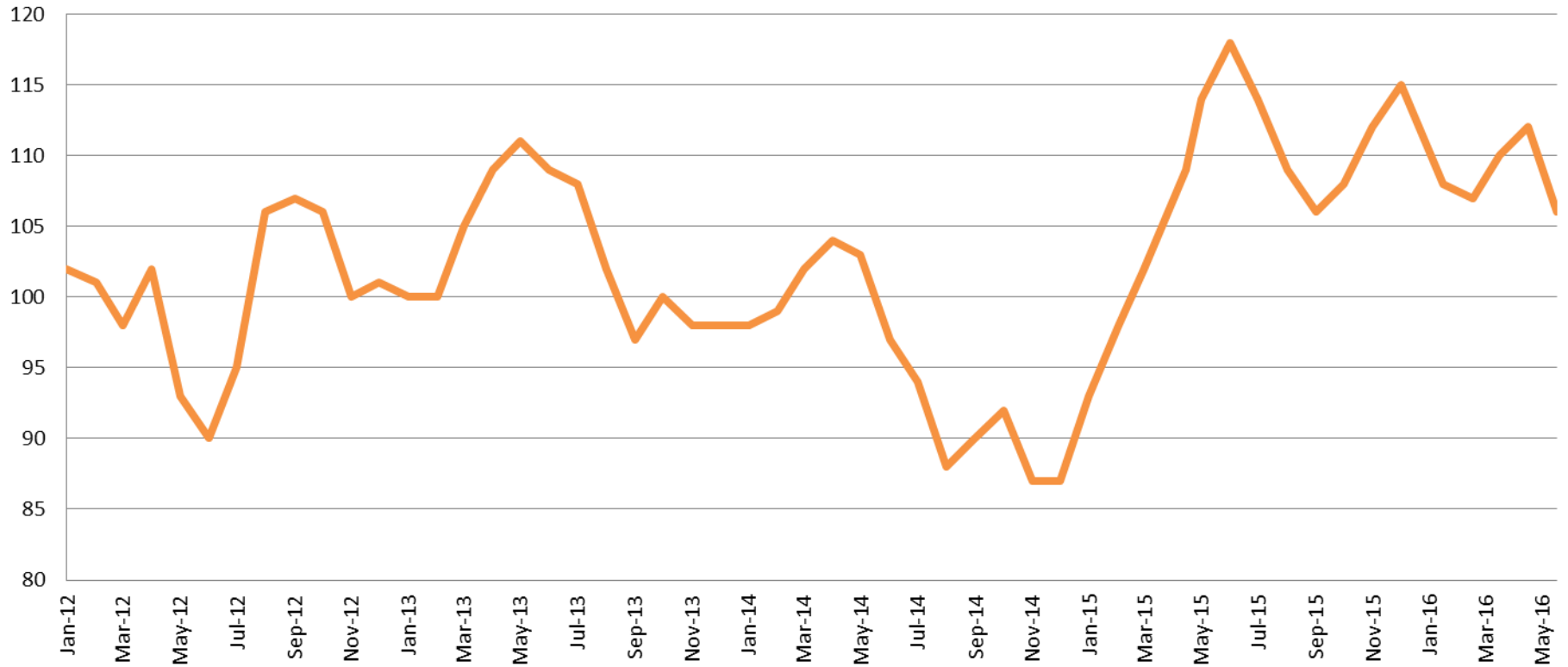
**2013 = 169**  
**2014 = 90**  
**2015 = 111**  
**2016 = 56**

(data obtained from CoW)



*Sedgwick County...*  
*working for you*

## Drug Court - Sedgwick County ADP: 2012 - present



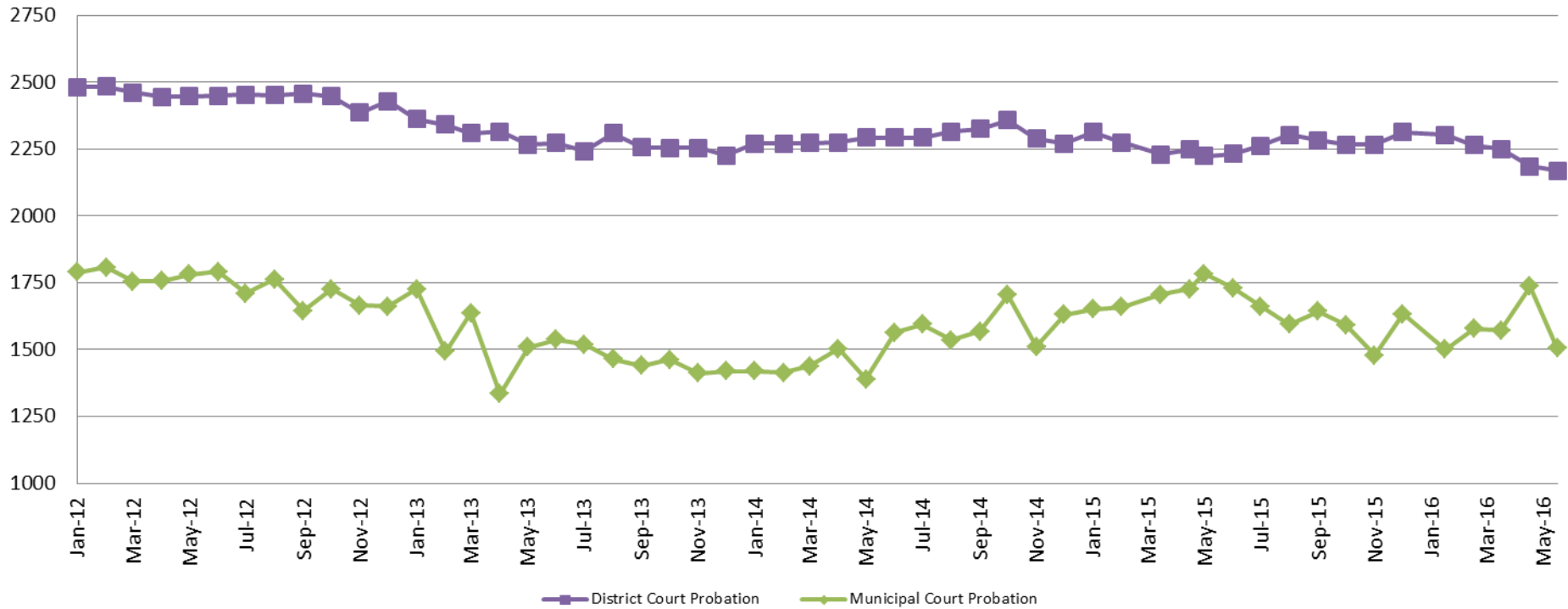
### May - SG CO

**2013 = 111**  
**2014 = 103**  
**2015 = 114**  
**2016 = 106**

### May YTD Avg.

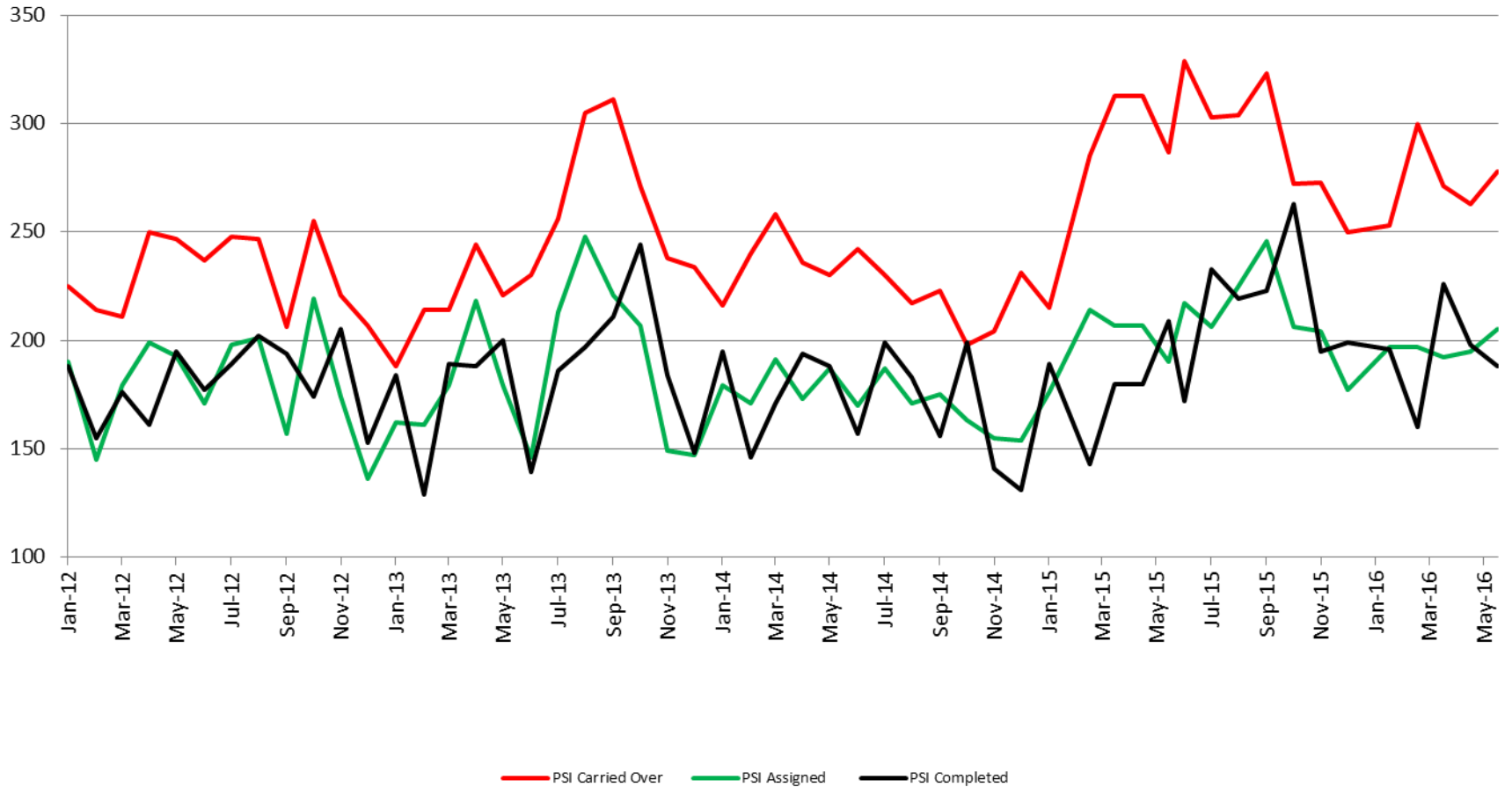
**2013 = 105**  
**2014 = 101**  
**2015 = 103**  
**2016 = 109**

## Probation - Active Caseloads 2012 - present



<b>May</b>	<b>2013</b>	<b>2014</b>	<b>2015</b>	<b>2016</b>
District Court	2,267	2,293	2,224	2,170
Municipal Court	1,509	1,389	1,784	1,506
<b>May YTD Avg.</b>	<b>2013</b>	<b>2014</b>	<b>2015</b>	<b>2016</b>
District Court	2,319	2,277	2,258	2,235
Municipal Court	1,540	1,432	1,705	1,579

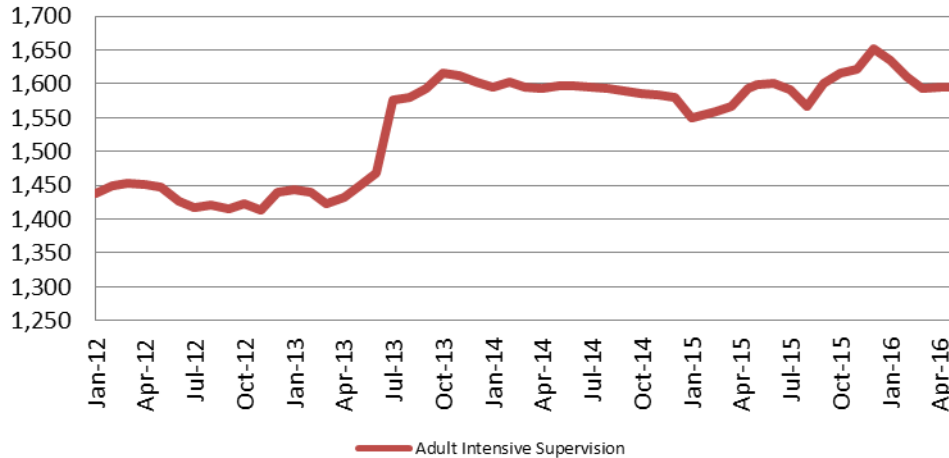
# District Court Probation: Pre-Sentence Investigation 2012 - present





# Community Corrections

## Adult Intensive Supervision Probation (AISP) ADP 2012 - present



<u>May</u>	<u>May YTD Avg.</u>
2013 = 1,449	2013 = 1,437
2014 = 1,597	2014 = 1,597
2015 = 1,598	2015 = 1,573
2016 = 1,595	2016 = 1,605

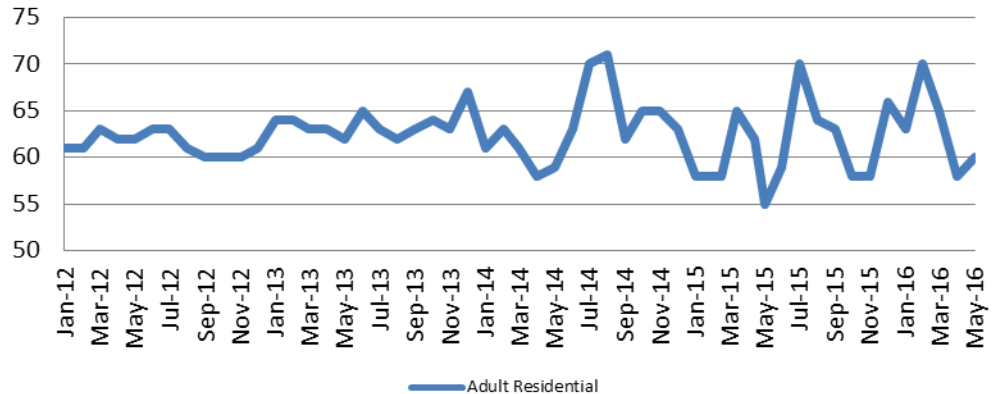
(data obtained from SG CO Dept. of Corrections)

\*KDOC changed population count to include drug court, residential and AISP beginning July 2013.

## Adult Residential: ADP 2012 - present

<u>May</u>	<u>May YTD Avg.</u>
2013 = 62	2013 = 63
2014 = 59	2014 = 60
2015 = 55	2015 = 60
2016 = 60	2016 = 63

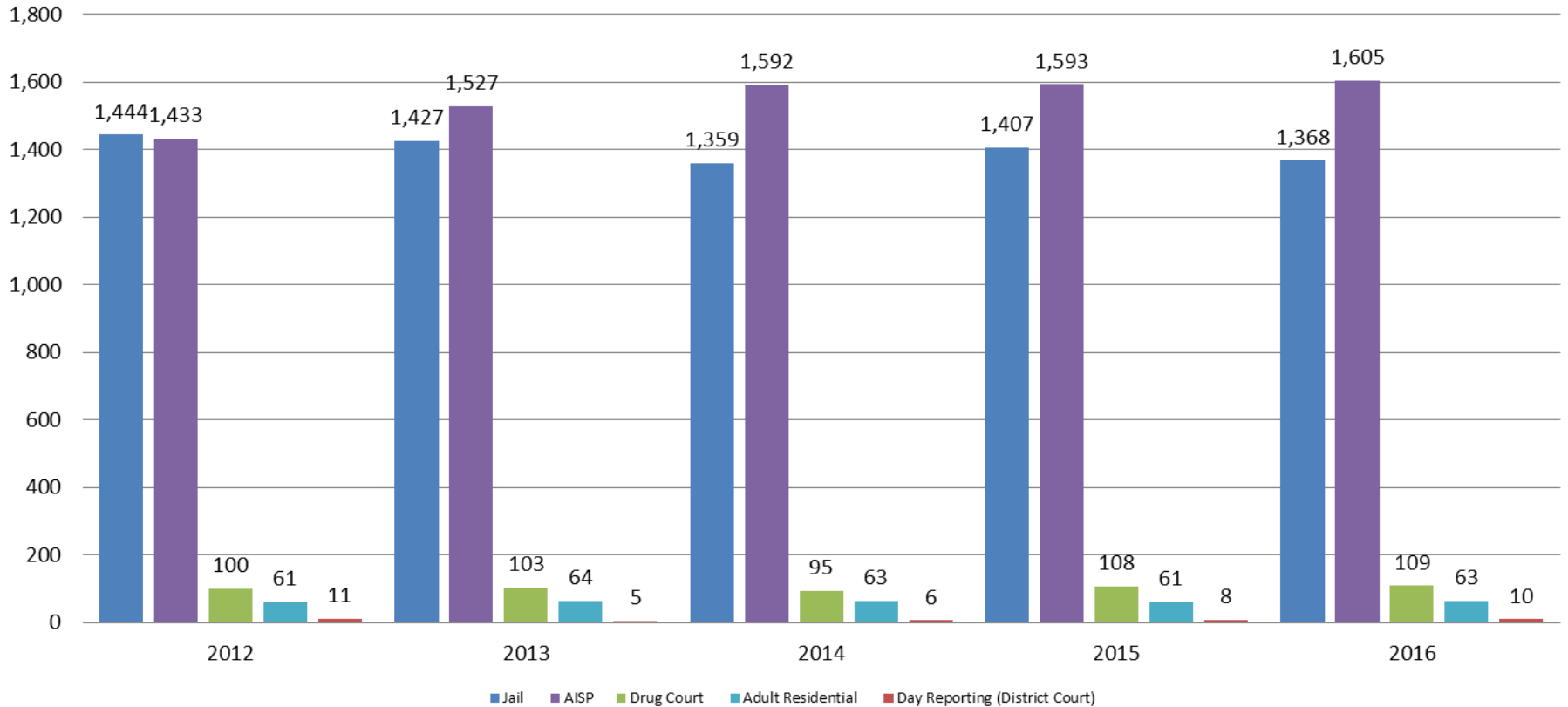
(data obtained from SG CO Dept. of Corrections)



Adult Residential

# Correlation: Total & Sedgwick County Programs (Adult)

## Total Annual ADP: 2012 - Present

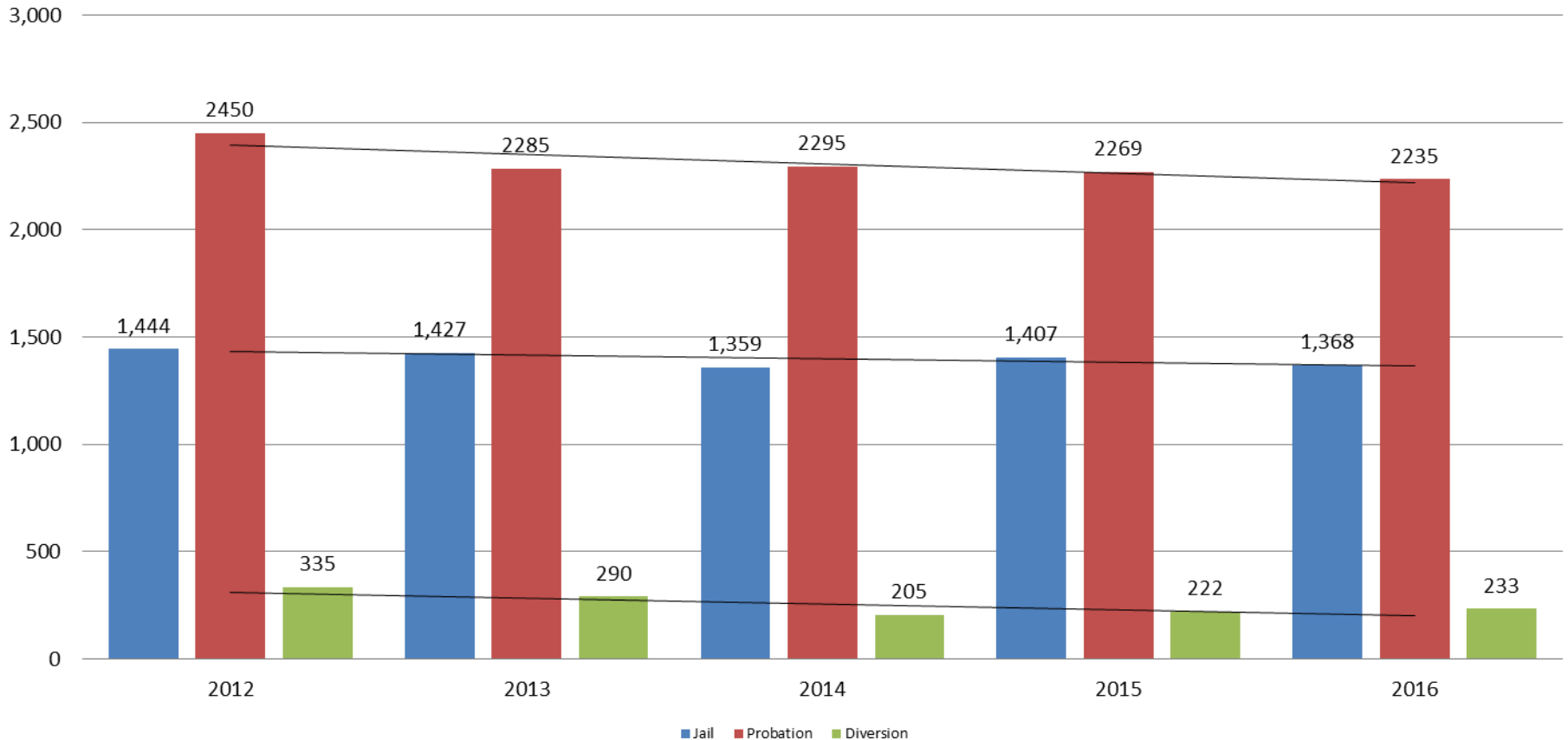


Jail includes individuals in booking, detention, work release and out-of county (combined)



# Correlation: Total & District Court Programs

## Total Annual ADP: 2012 - Present

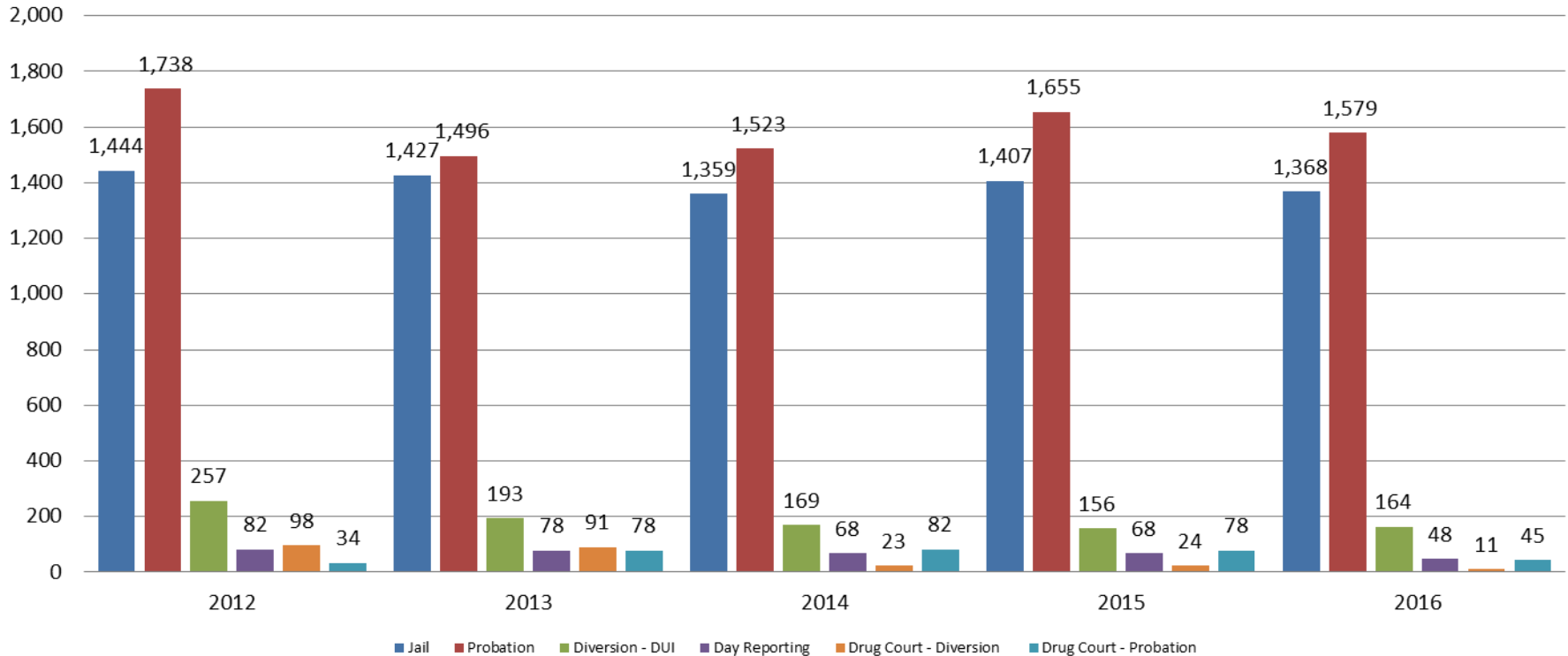


Jail includes individuals in booking, detention, work release and out-of county (combined)



# Correlation: Total & City of Wichita / Municipal Court Programs

## Total Annual ADP: 2012 - present

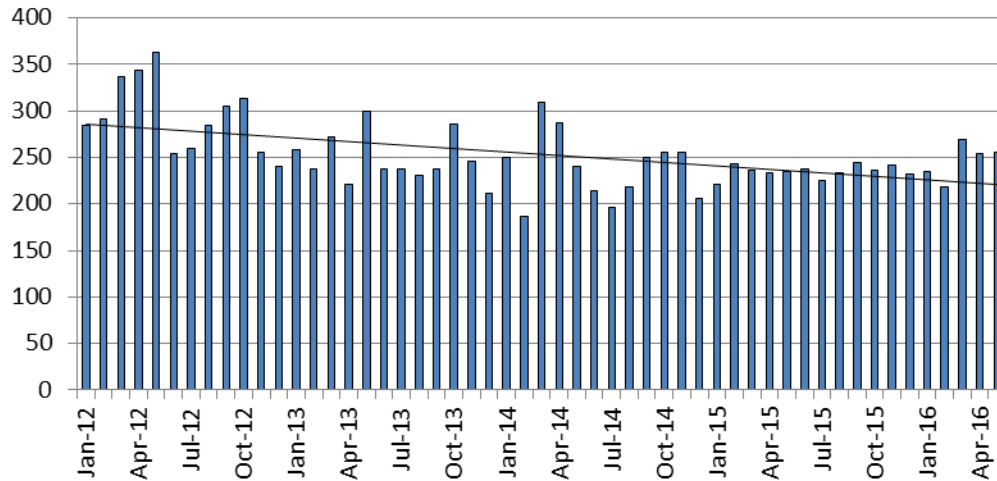


Jail includes individuals in booking, detention, work release and out-of county (combined)



# Juvenile

## JIAC Intakes: 2012 - present



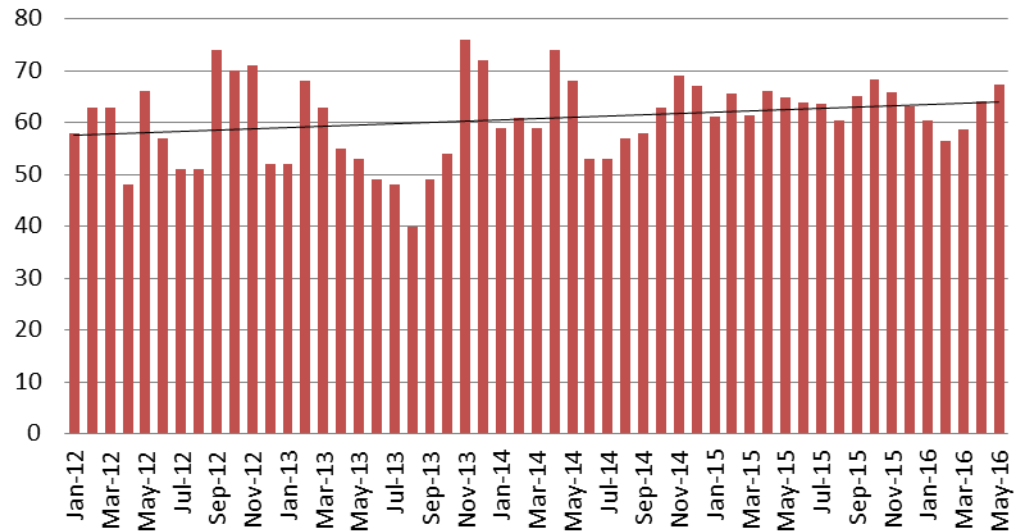
May	May YTD Average
2013 = 299	2013 = 258
2014 = 241	2014 = 255
2015 = 255	2015 = 234
2016 = 255	2016 = 247

(data obtained from SG CO Dept. of Corrections)

May	May YTD Avg.
2013 = 53	2013 = 58
2014 = 68	2014 = 64
2015 = 65	2015 = 64
2016 = 67	2016 = 61

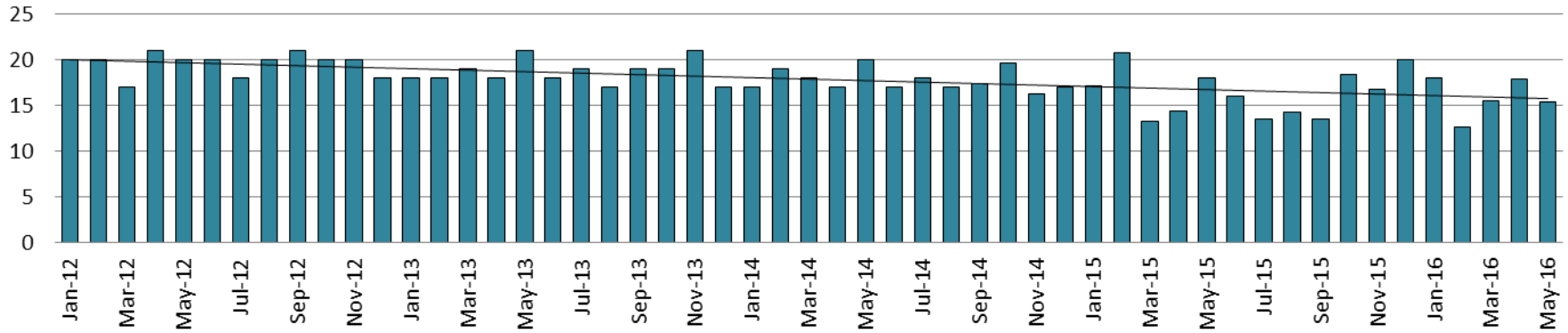
(data obtained from SG CO Dept. of Corrections)

## JDF ADP: 2012 - present

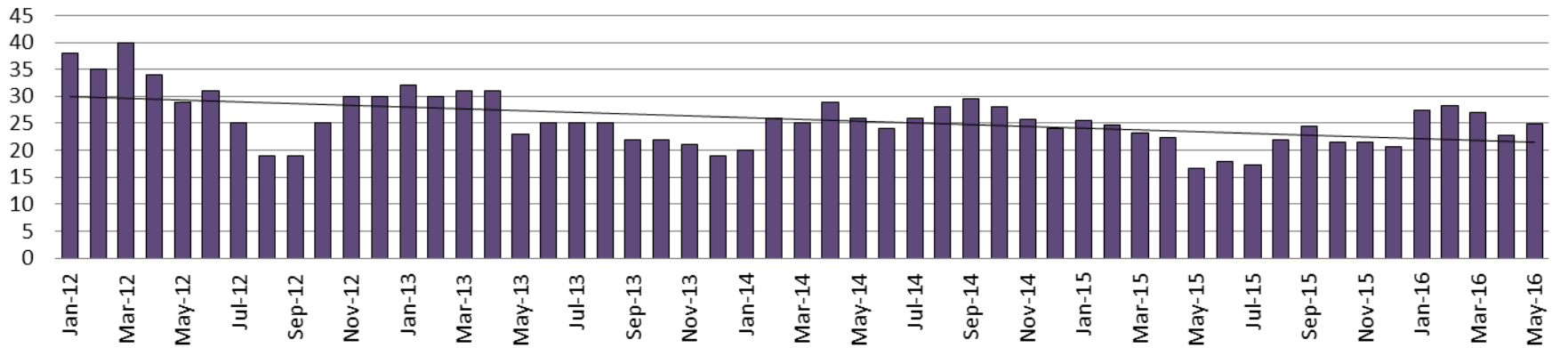


# Juvenile Detention Alternatives

## Juvenile Residential Facility (JRF) ADP: 2012 - present

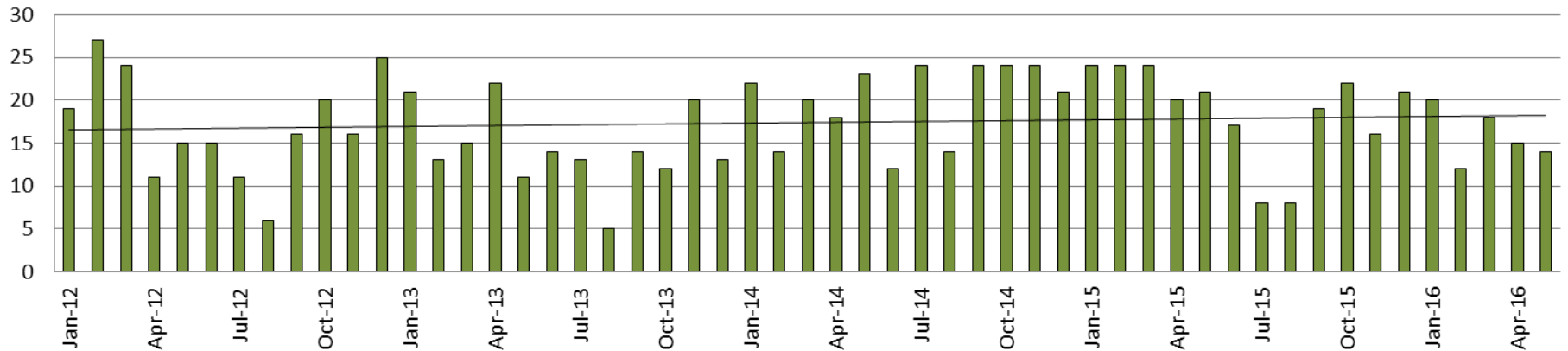


## Home-Based Supervision ADP: 2012 - present

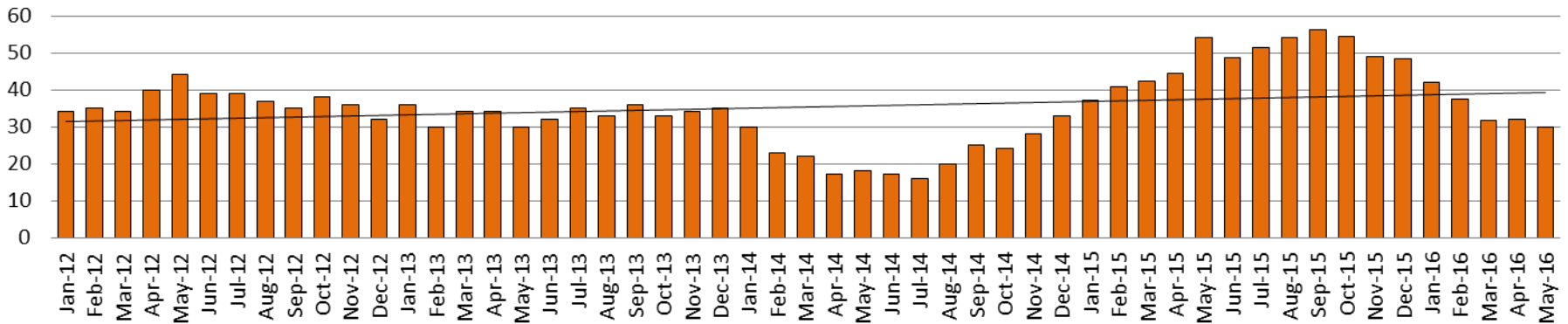


# Juvenile Detention Alternatives

## Weekend Alternative Detention Program 2012 - present



## Detention Advocacy Case Management Services ADP: 2012 - present



# Juvenile Detention Services

<b>May ADP</b>	<b>2013</b>	<b>2014</b>	<b>2015</b>	<b>2016</b>
Juvenile Detention Facility	53	68	65	67
Juvenile Residential Facility	21	20	18	15
Home Based Supervision	23	26	17	25
Detention Advocacy Case Management Services	30	18	54	30
Weekend Alternative Detention Program (total)	11	23	21	14

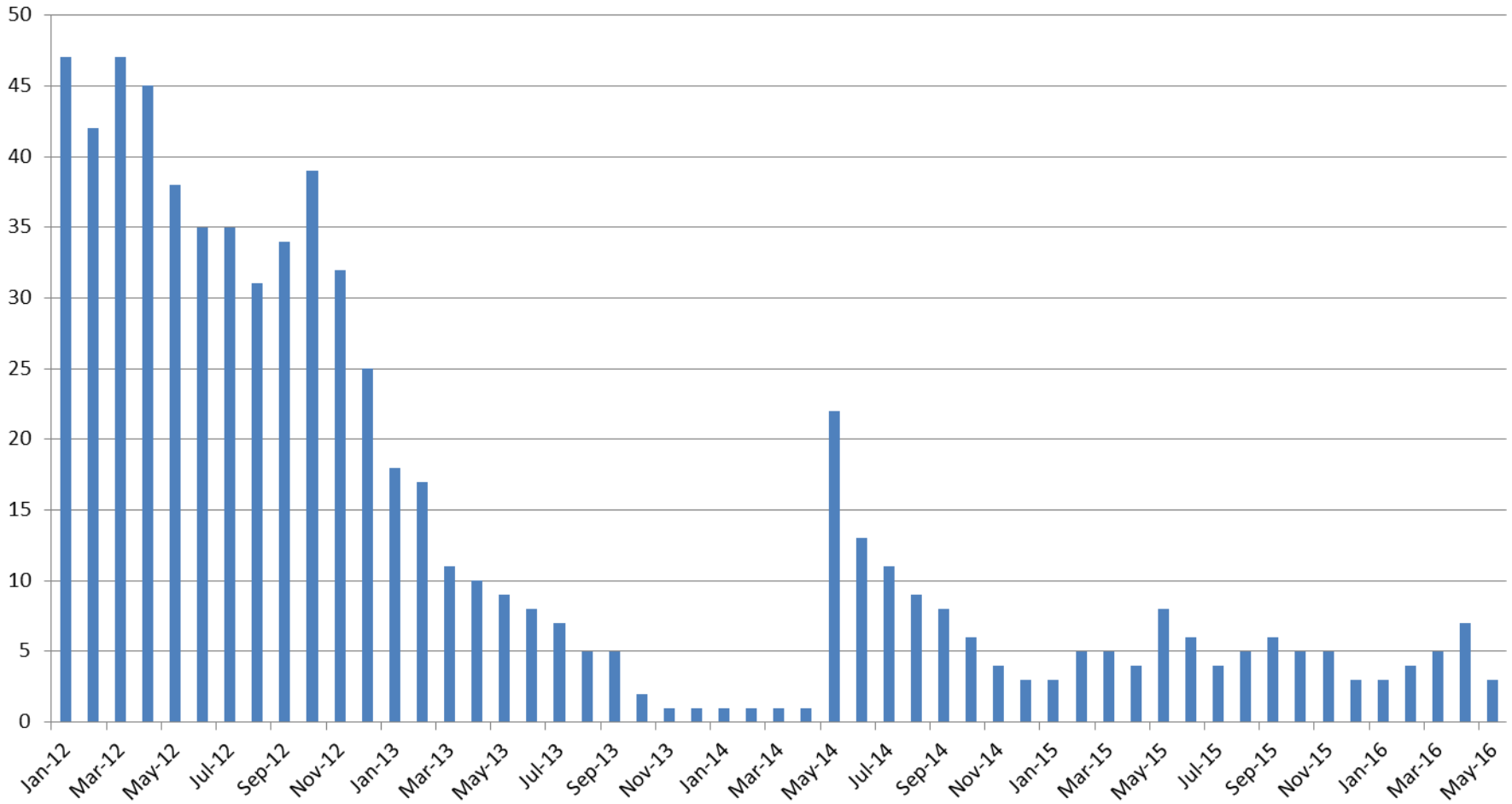
<b>May YTD AVERAGE</b>	<b>2013</b>	<b>2014</b>	<b>2015</b>	<b>2016</b>
Juvenile Detention Facility	58	64	64	61
Juvenile Residential Facility	19	18	17	16
Home Based Supervision	29	25	23	26
Detention Advocacy Case Management Services	33	22	44	35
Weekend Alternative Detention Program	16	19	23	16





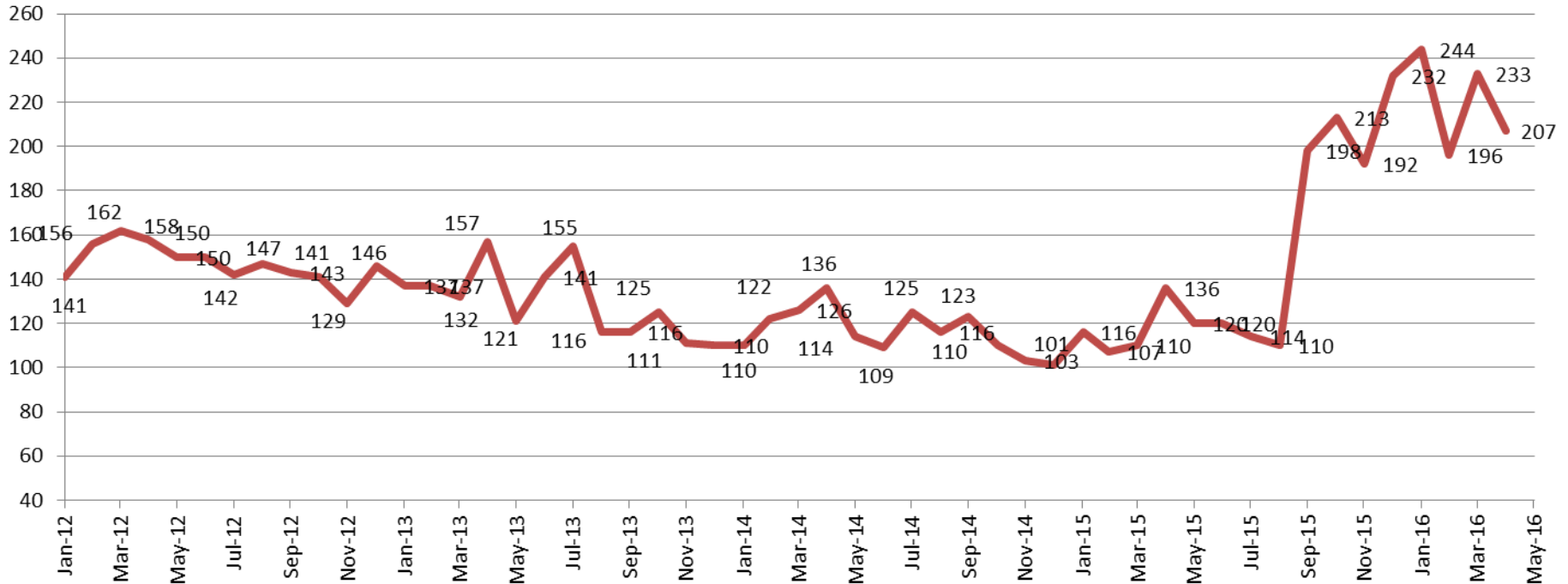
# Monthly Jail Snapshot: May 31, 2016

## BICE Holds 2012-Present



# Monthly Jail Snapshot: May 31, 2016

## Felony Commitments: February 2012 - present



### May:

2012 = 158

2013 = 157

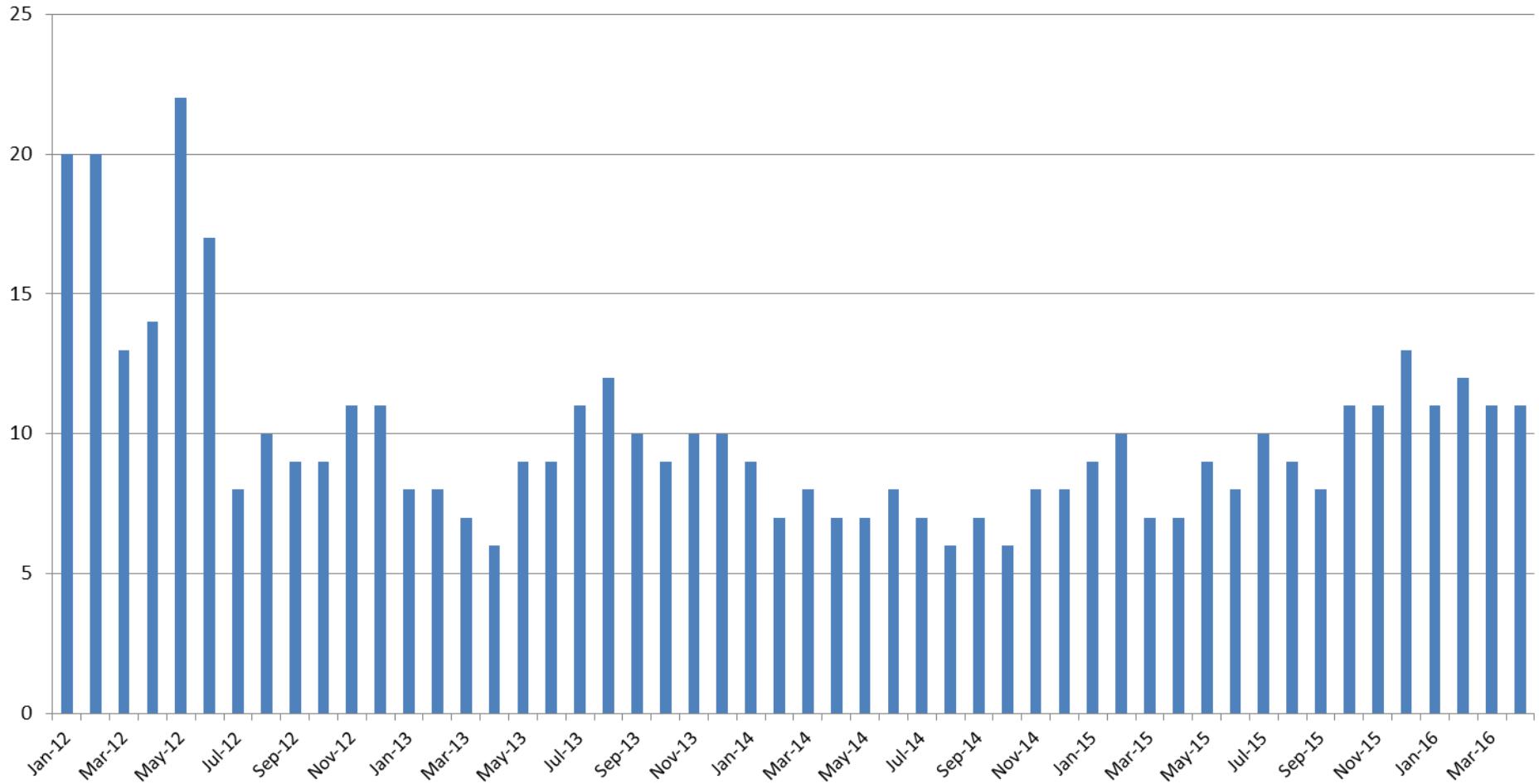
2014 = 136

2015 = 136

2016 = 207

(data obtained from SG CO DIO)

# Journal Entry Completion (Average Days) January 2013-Present



This data is always reported a month behind

