

Criminal Justice Coordinating Council

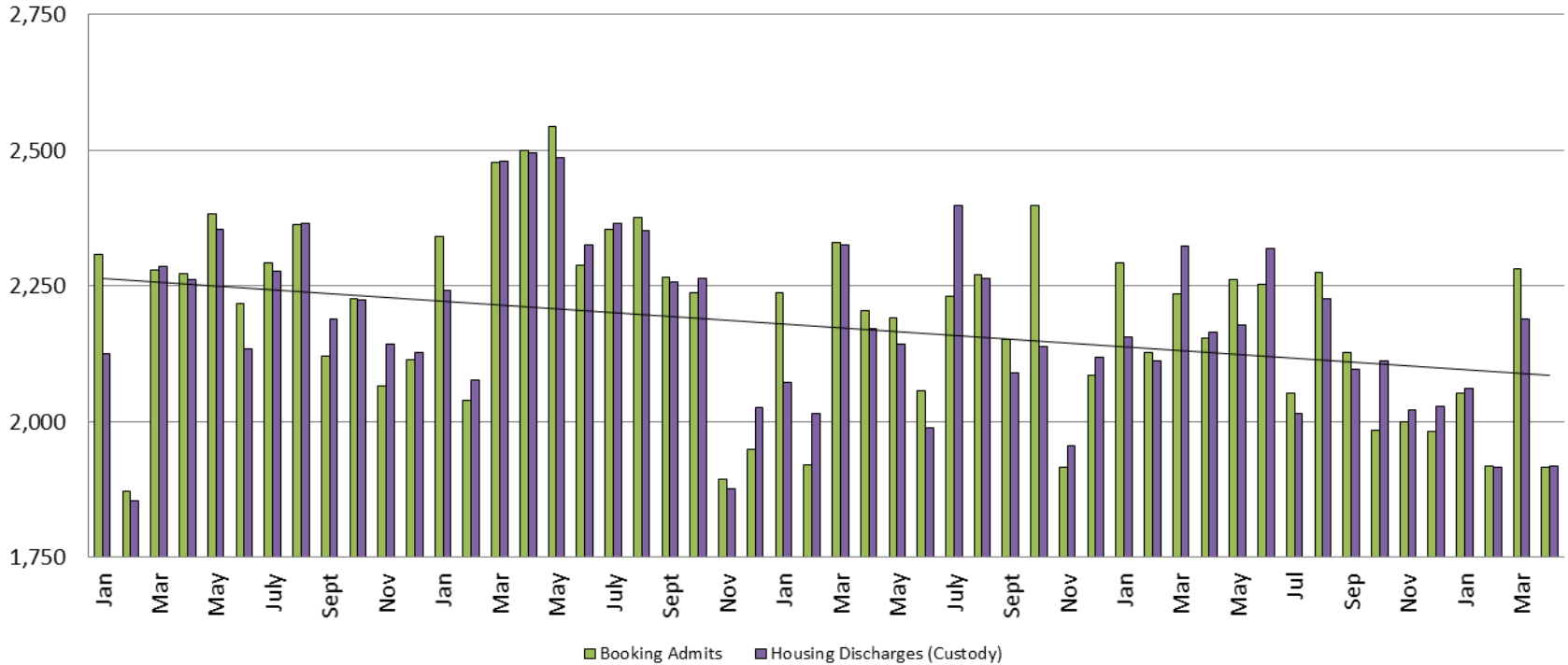
Population Report & Program Trends

May 2017



Detention Facility

Booking Admits & Housing Discharges from Custody January 2013 - Present



Housing Discharges for April

2015 = 2,172
 2016 = 2,165
 2017 = 1,919

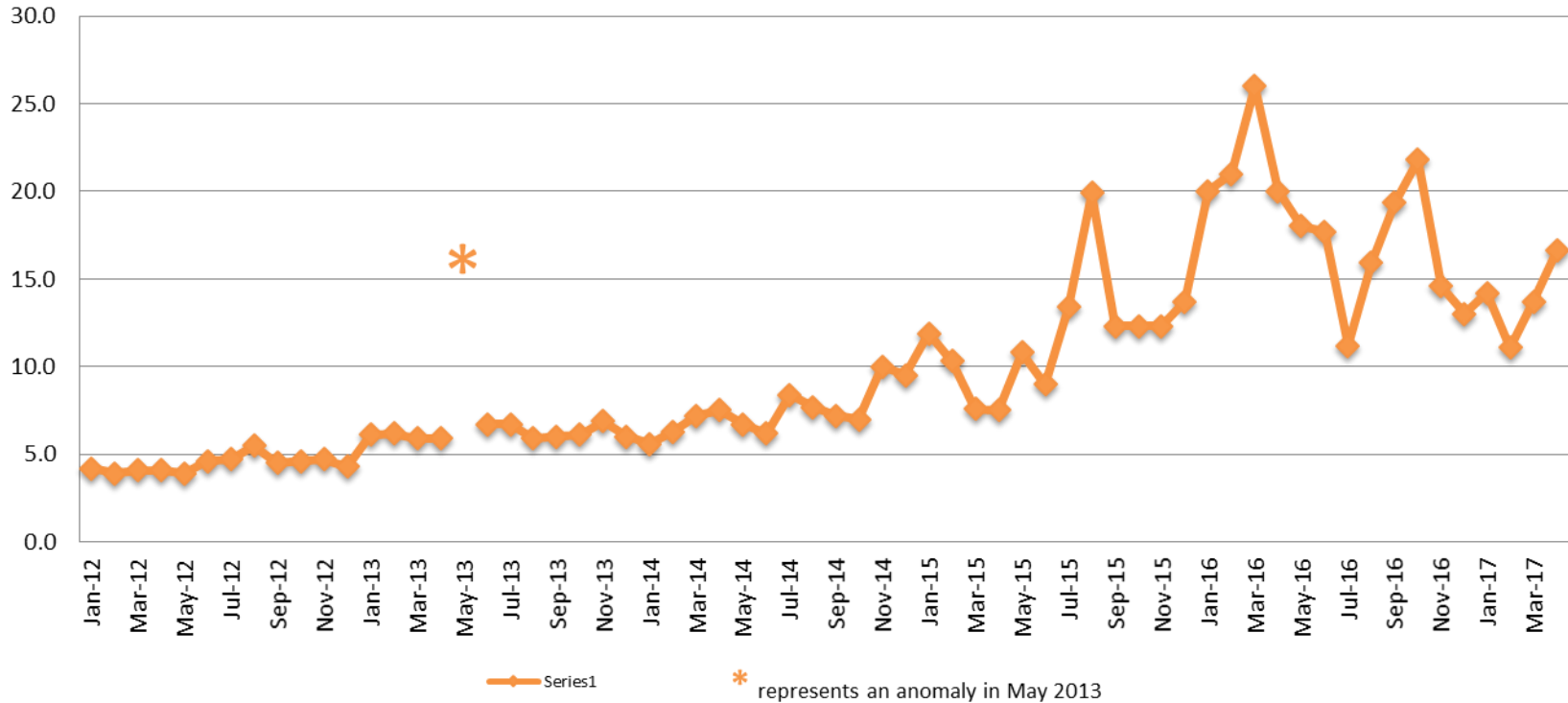
Bookings for April

2015 = 2,205
 2016 = 2,153
 2017 = 1,916

(data obtained from detention facility)



Average Length of Stay: Booking (Hours) January 2012 - Present



April

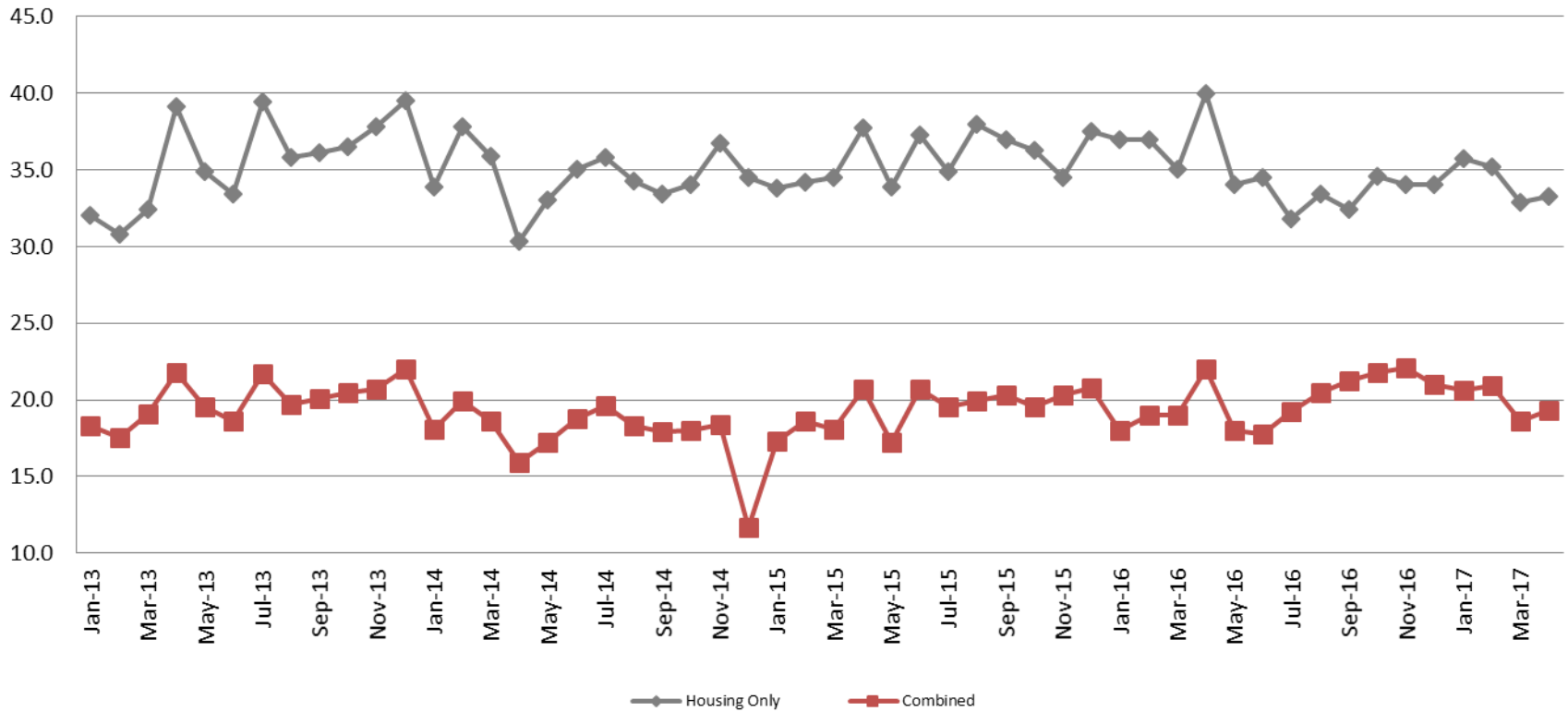
2012 = 4.1	2015 = 7.5
2013 = 5.9	2016 = 20.0
2014 = 7.5	2017 = 16.6

April YTD Avg.

2012 = 4.0	2015 = 9.3
2013 = 6.0	2016 = 21.8
2014 = 6.7	2017 = 13.9



Average Length of Stay: Housing & Combined (Days) January 2013 - Present



April Housing

2013 = 39.1
 2014 = 30.3
 2015 = 37.7
 2016 = 40.0
 2017 = 33.3

April Housing YTD Avg.

2013 = 33.6
 2014 = 34.5
 2015 = 35.1
 2016 = 37.3
 2017 = 34.3

April Combined

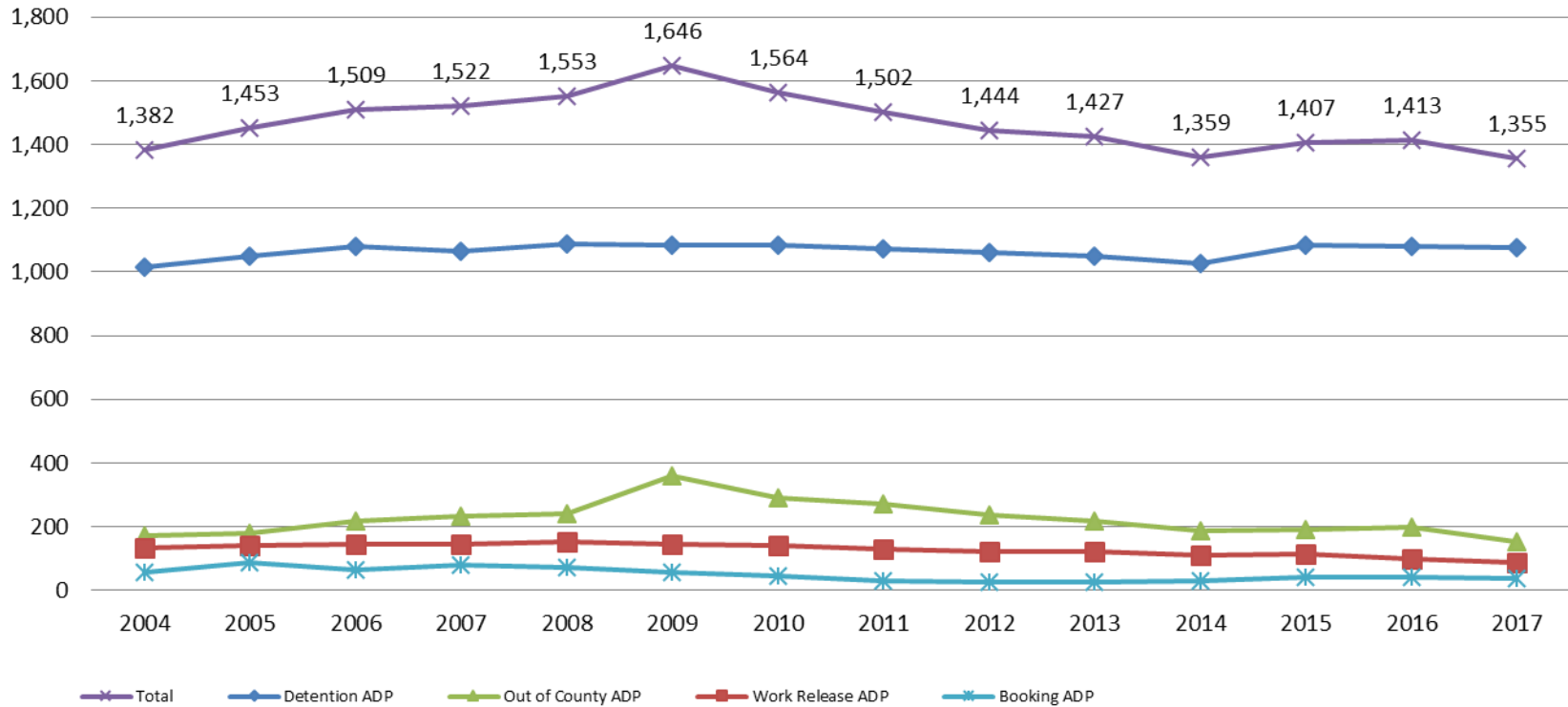
2013 = 21.8
 2014 = 15.9
 2015 = 20.7
 2016 = 22.0
 2017 = 19.3

April Combined YTD Avg.

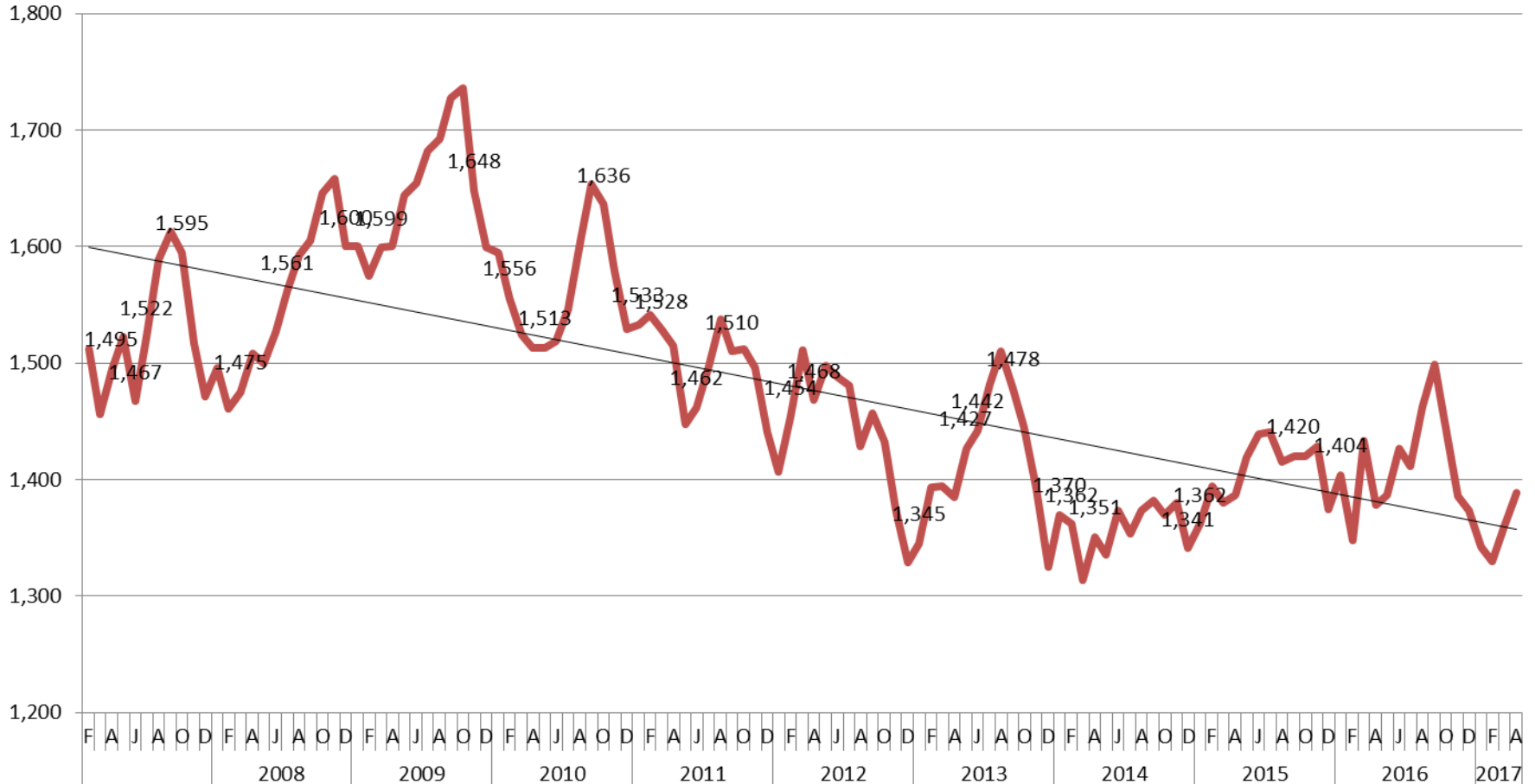
2013 = 19.2
 2014 = 18.1
 2015 = 18.7
 2016 = 19.5
 2017 = 19.9

Jail: Annual Average Daily Population (ADP)

TRENDS: Booking, Detention, Work Release, & Out of County Annual ADP: 2004 - present



TOTAL MONTHLY ADP: JAIL (Booking, Detention Facility, Work Release, & Out of County) 2007 - present



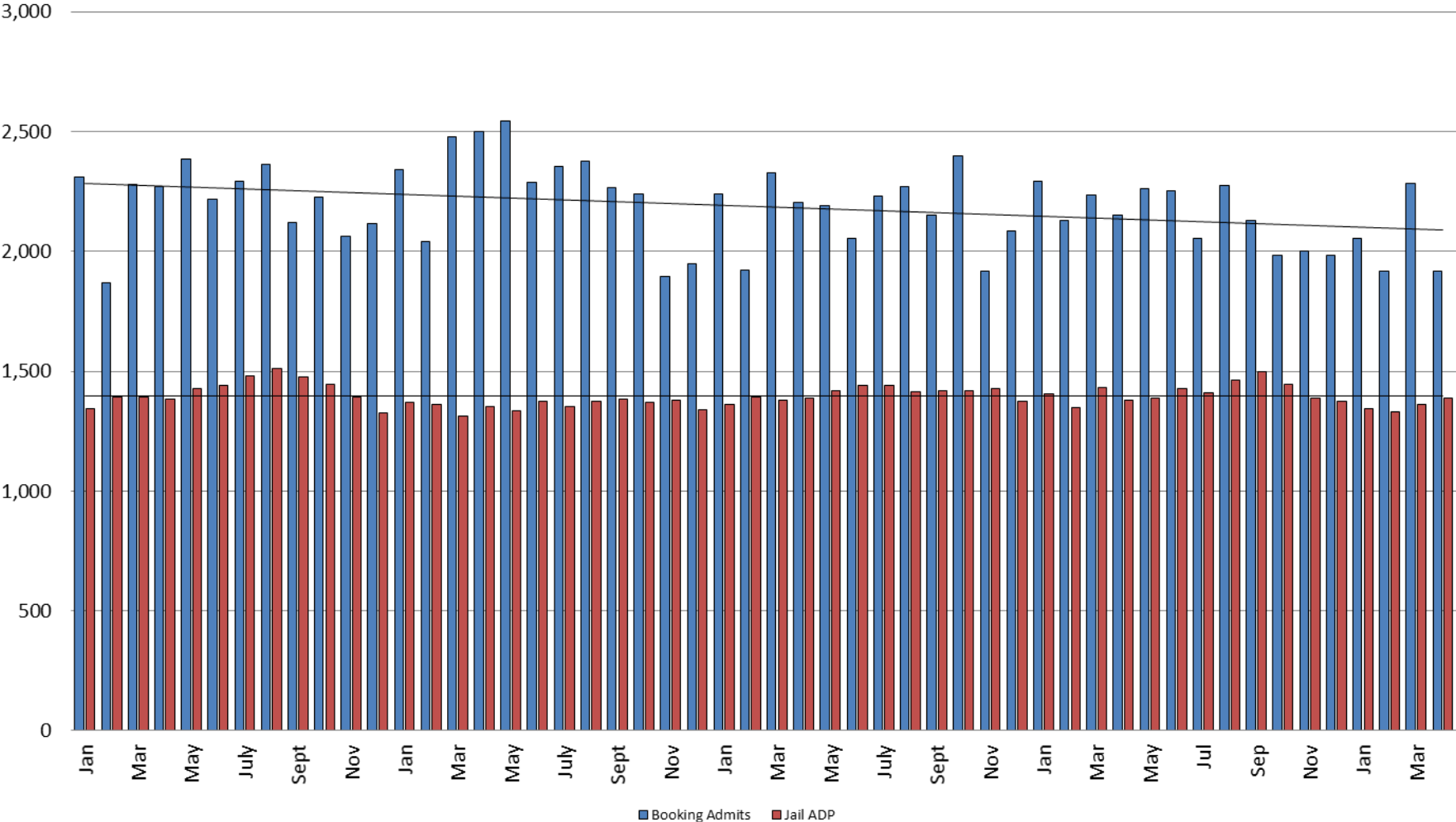
This slide shows total monthly ADP for individuals in booking, detention, work release and out-of county (combined)

(data obtained from detention facility)



Sedgwick County...
working for you

Booking Admits & Total Monthly ADP (Jail): 2013 - present

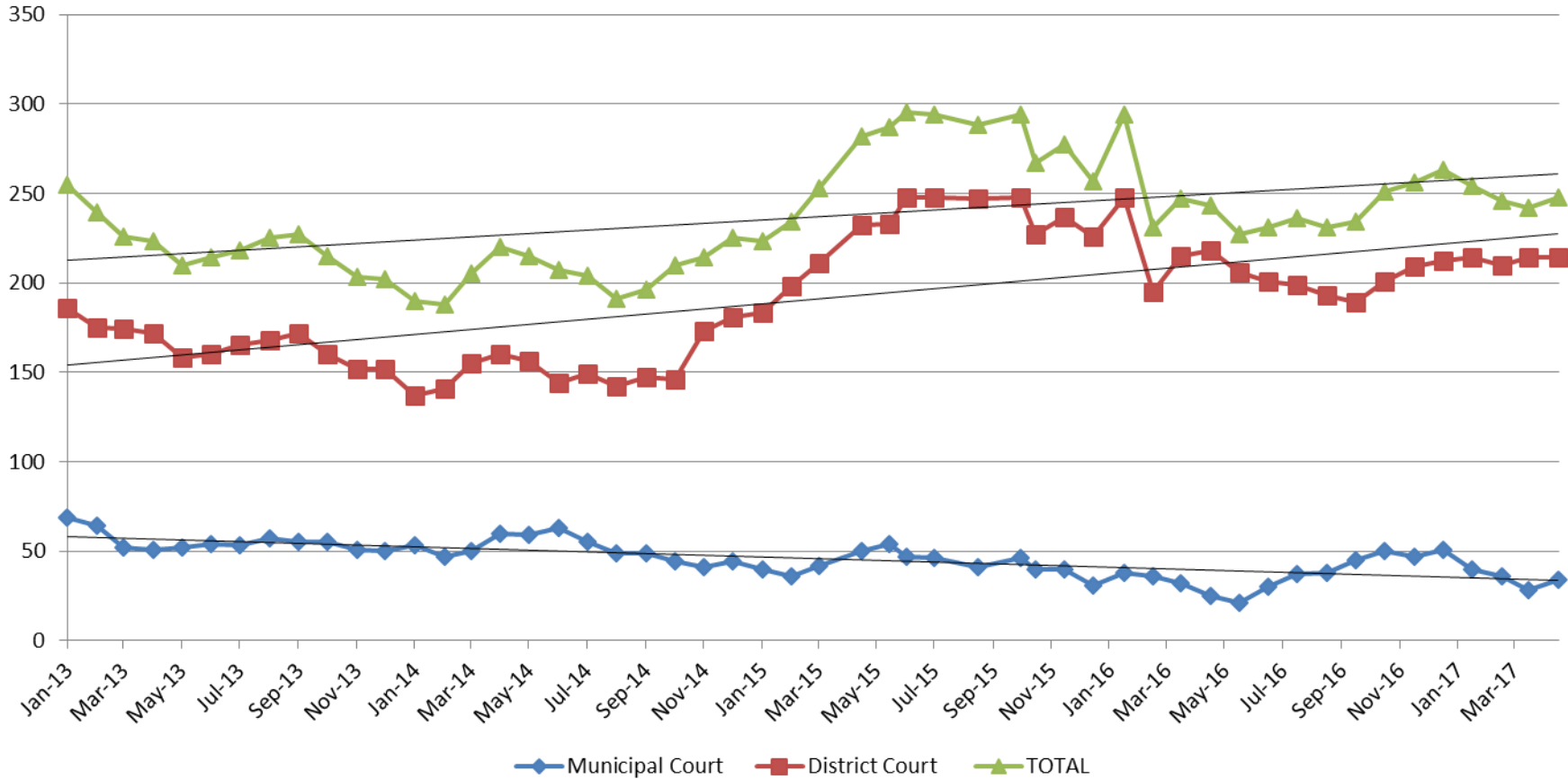


Jail includes individuals in booking, detention, work release and out-of county (combined)

(data obtained from detention facility)



Pretrial Services Program (PSP) Monthly ADP: January 2013 - Present

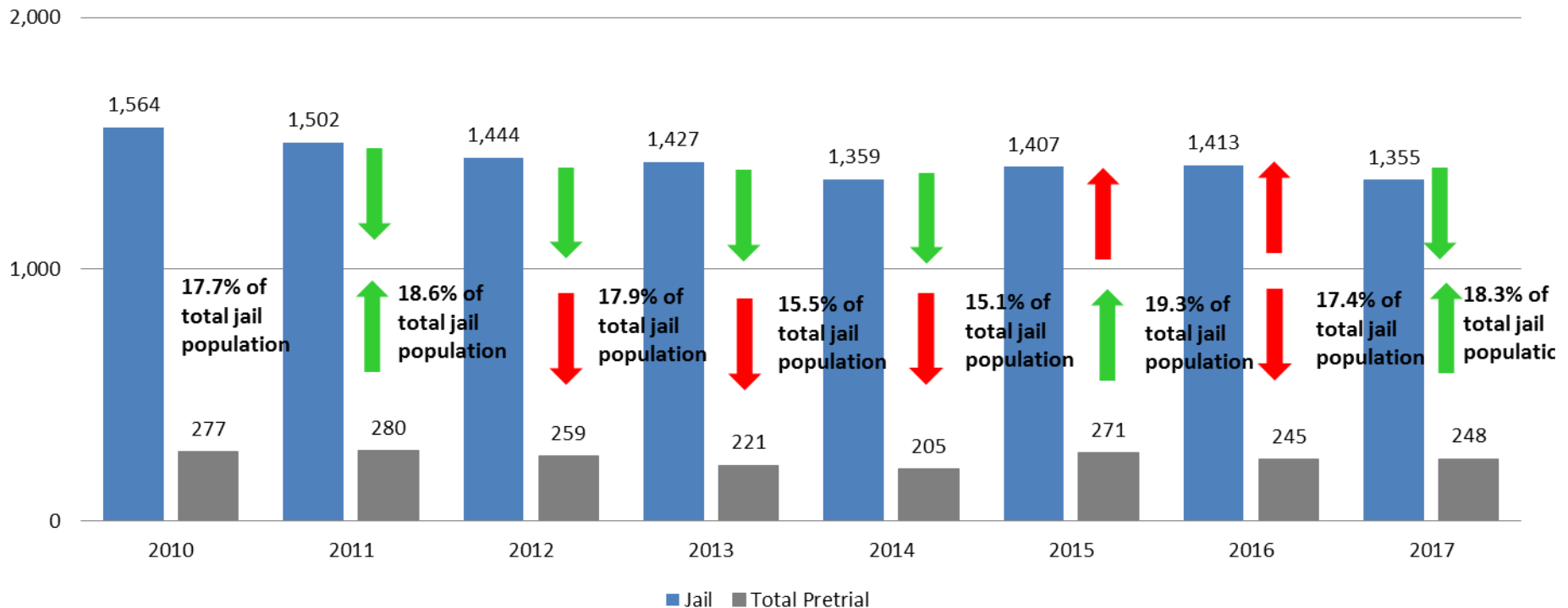


April	2013	2014	2015	2016	2017
Municipal Court	51	60	50	25	34
District Court	172	160	232	218	214
TOTAL	223	220	282	243	248

April YTD Avg.	2013	2014	2015	2016	2017
Municipal Court	59	53	42	33	35
District Court	177	148	206	219	213
TOTAL	236	201	248	254	248

Correlation: Total & PSP

Total Annual ADP: 2010 - Present



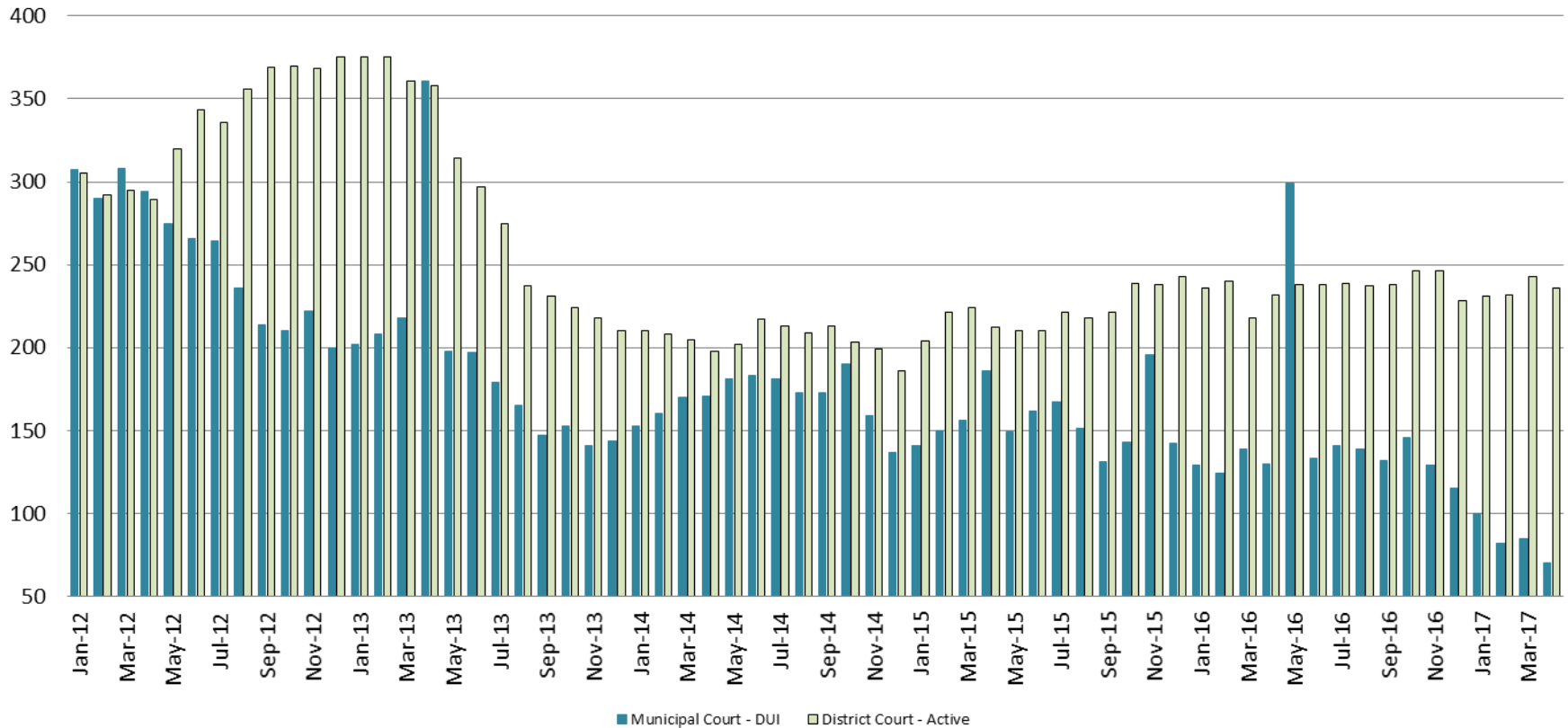
Arrows represent the overall increase/decrease of the population from year to year

Jail includes individuals in booking, detention, work release and out-of county (combined)



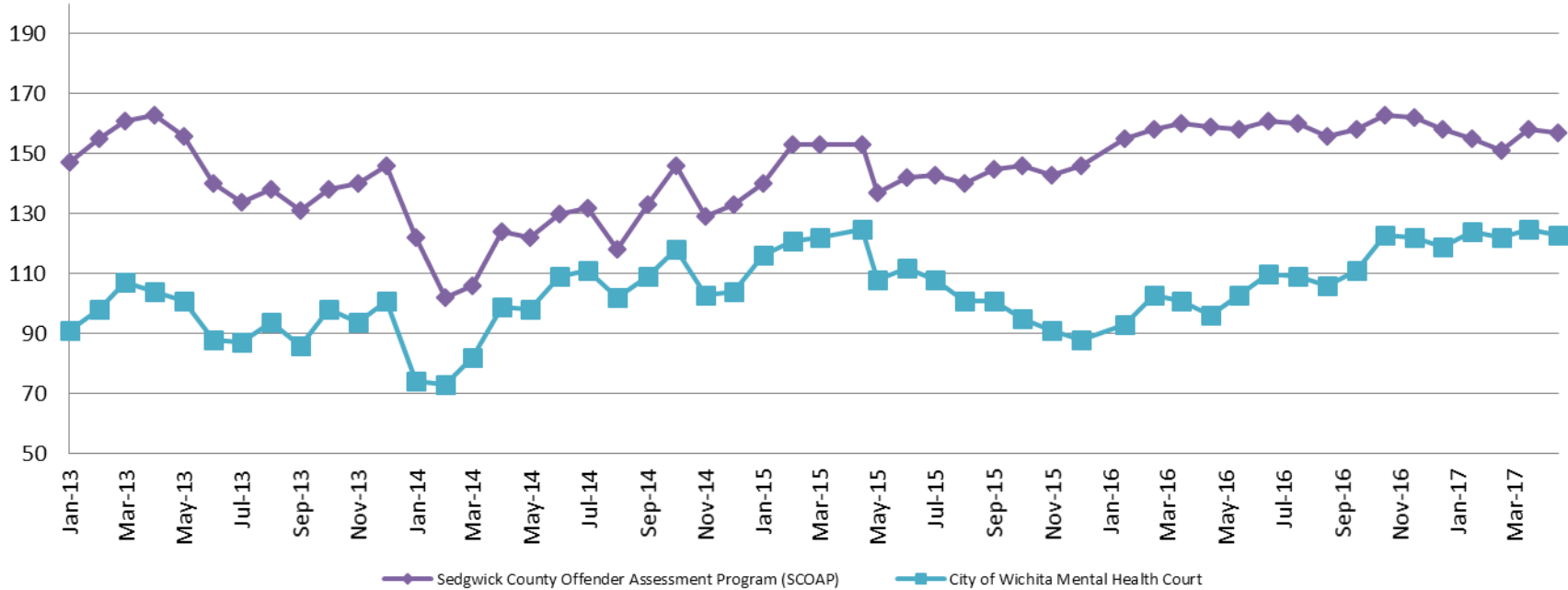
Diversion - Active Caseload

January 2012 - Present



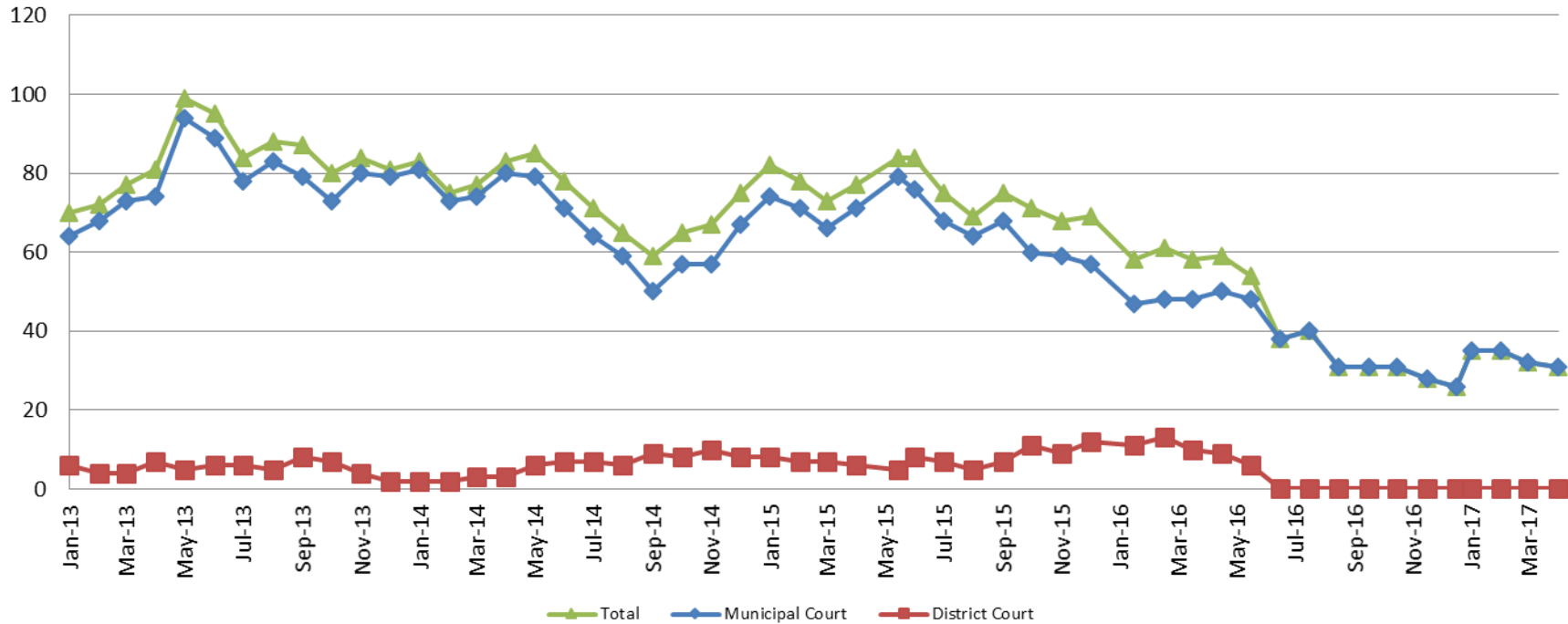
April	2013	2014	2015	2016	2017	April YTD Avg.	2013	2014	2015	2016	2017
Municipal Court- DUI	361	171	186	130	70	Municipal Court	247	164	158	131	84
District Court- Active	358	198	212	232	236	District Court	367	205	215	232	236

Mental Health - ADP 2013 - present



April:	2013	2014	2015	2016	2017
SCOAP	163	124	153	159	157
CoW – MH Court	104	99	125	96	123
April YTD Avg.	2013	2014	2015	2016	2017
SCOAP	157	114	150	158	155
CoW – MH Court	100	82	121	98	124

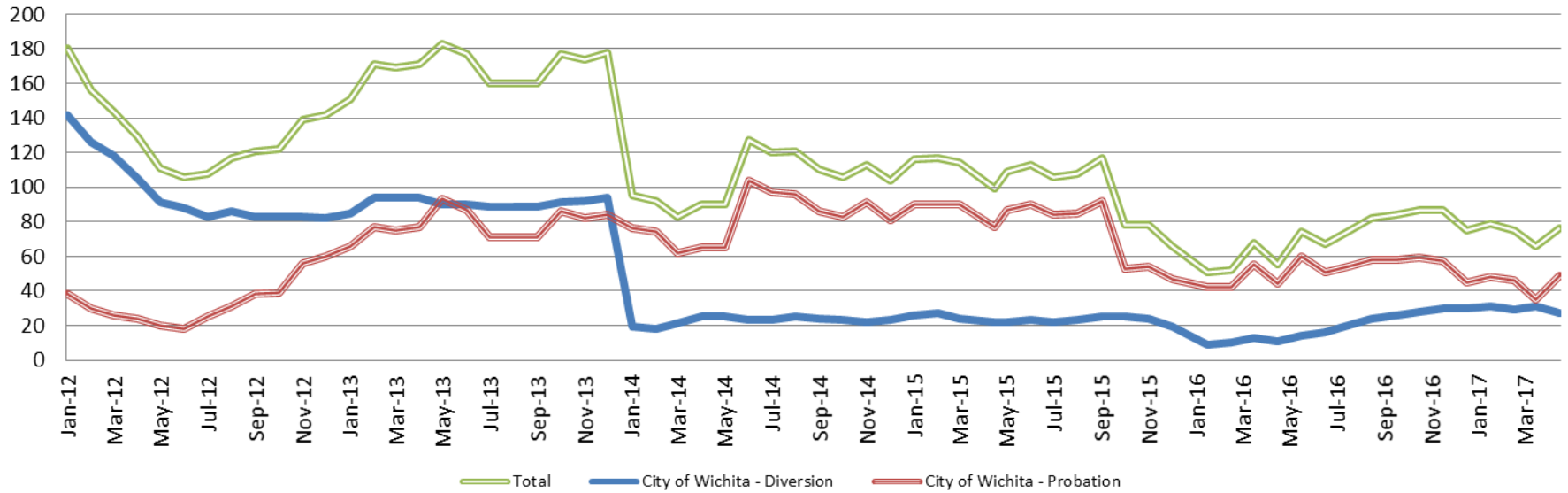
Day Reporting - Active Caseload 2013-present



April	2013	2014	2015	2016	2017
Municipal Court	74	80	71	50	31
District Court	7	3	6	9	0*
TOTAL	81	83	77	59	31
April YTD Avg.	2013	2014	2015	2016	2017
Municipal Court	70	77	71	48	33
District Court	5	3	7	11	0*
TOTAL	75	80	78	59	33



Drug Court - City of Wichita ADP: 2012 - present



April - CoW Diversion

2013 = 94
2014 = 25
2015 = 22
2016 = 11
2017 = 27

April YTD Avg.

2013 = 92
2014 = 21
2015 = 25
2016 = 11
2017 = 30

April - CoW Probation

2013 = 77
2014 = 65
2015 = 77
2016 = 44
2017 = 49

April YTD Avg.

2013 = 74
2014 = 69
2015 = 87
2016 = 46
2017 = 45

April - CoW Total

2013 = 171
2014 = 90
2015 = 99
2016 = 55
2017 = 76

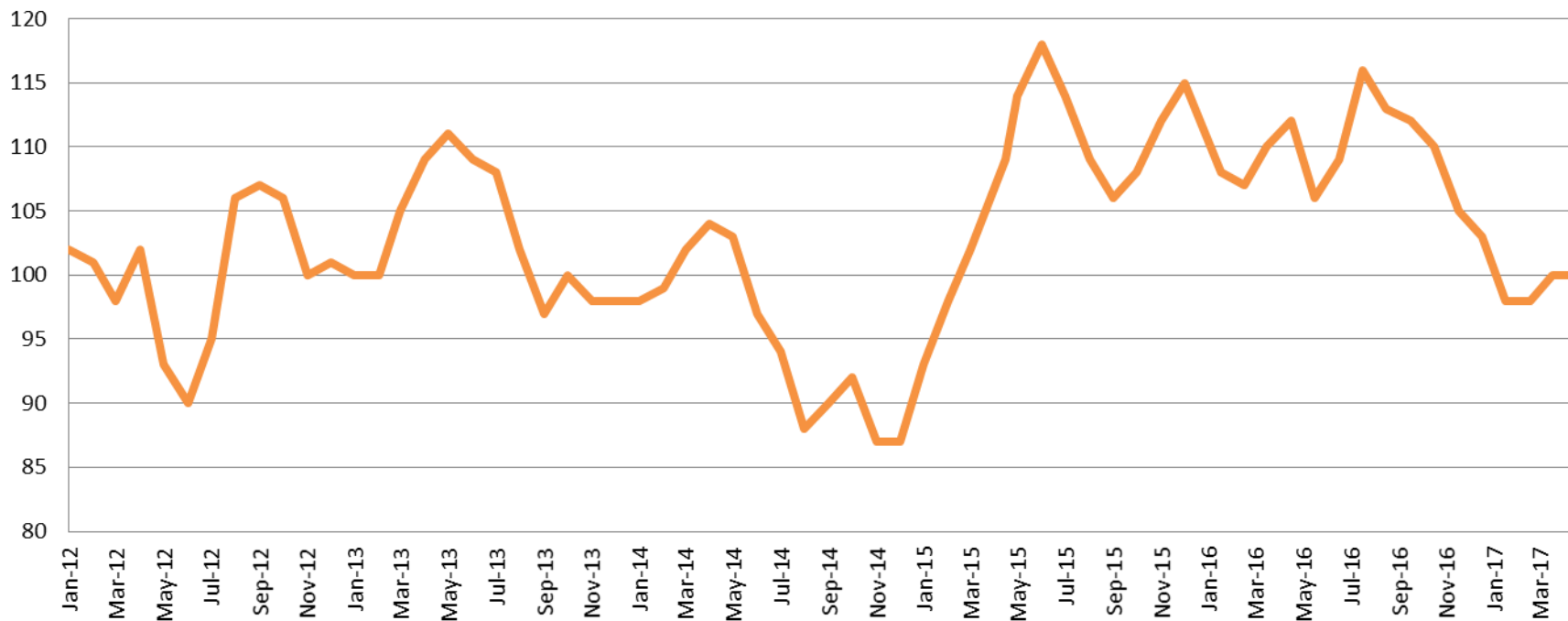
April YTD Avg.

2013 = 166
2014 = 90
2015 = 112
2016 = 57
2017 = 74

(data obtained from CoW)



Drug Court - Sedgwick County ADP: 2012 - present



April - SG CO

2013 = 109
2014 = 104
2015 = 109
2016 = 112
2017 = 100

April YTD Avg.

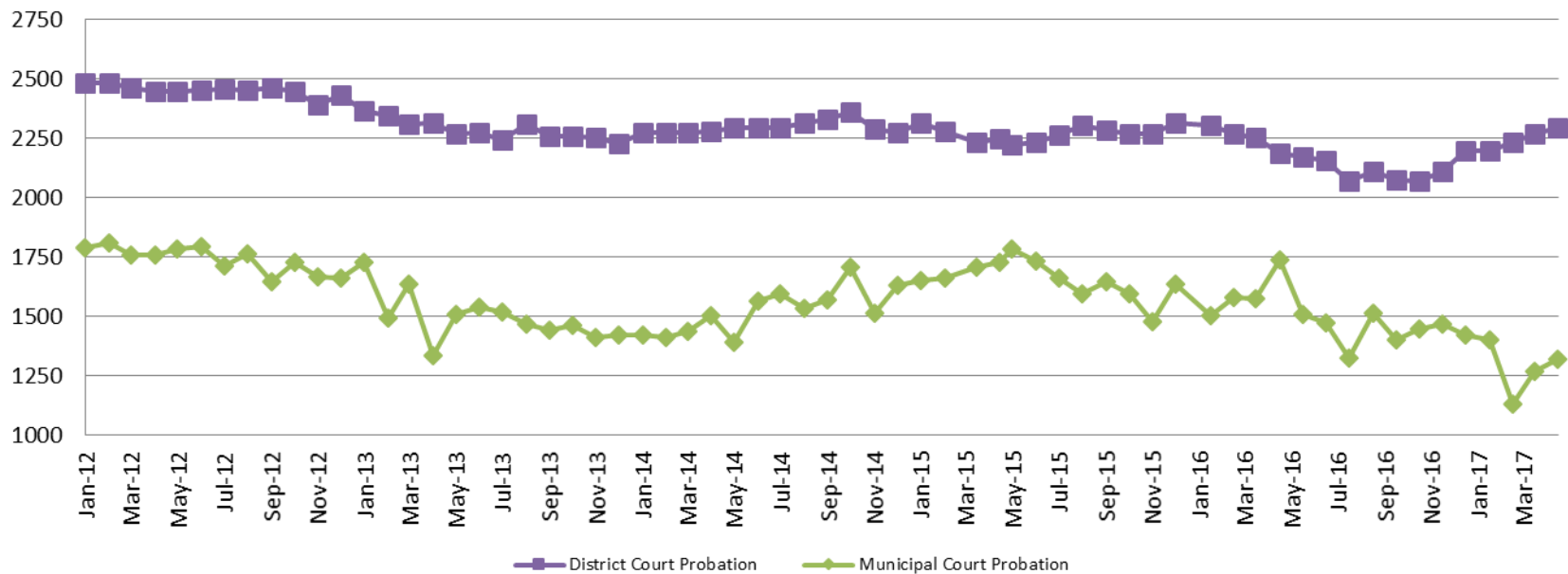
2013 = 104
2014 = 101
2015 = 101
2016 = 109
2017 = 99

(data obtained from Pretrial Services)



*Sedgwick County...
working for you*

Probation - Active Caseloads 2012 - present

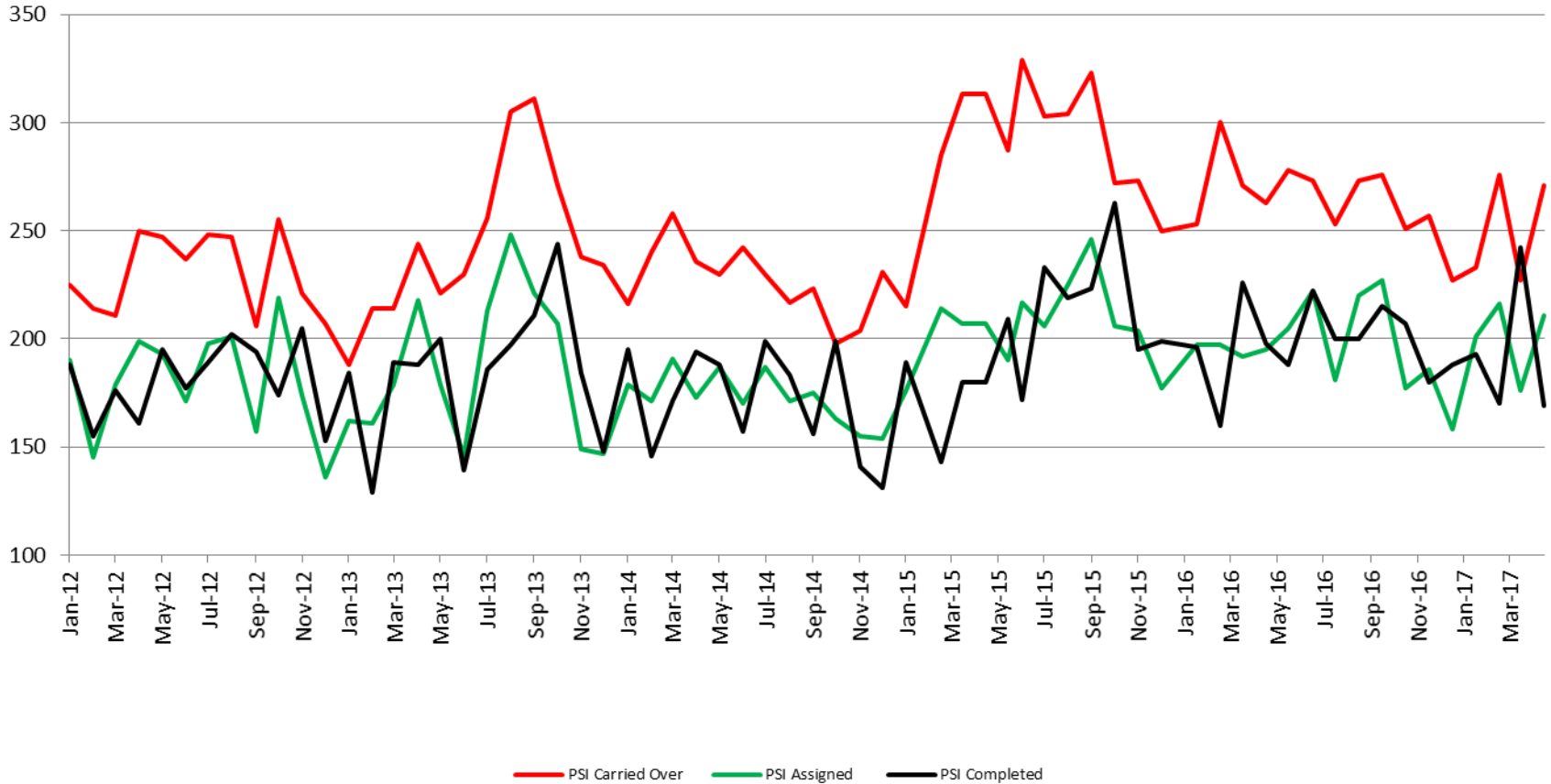


April	2013	2014	2015	2016	2017
District Court	2,315	2,276	2,249	2,186	2,291
Municipal Court	1,334	1,502	1,726	1,737	1,321
April YTD Avg.	2013	2014	2015	2016	2017
District Court	2,333	2,273	2,267	2,252	2,246
Municipal Court	1,547	1,443	1,686	1,597	1,280

(data obtained from CoW & District Court)



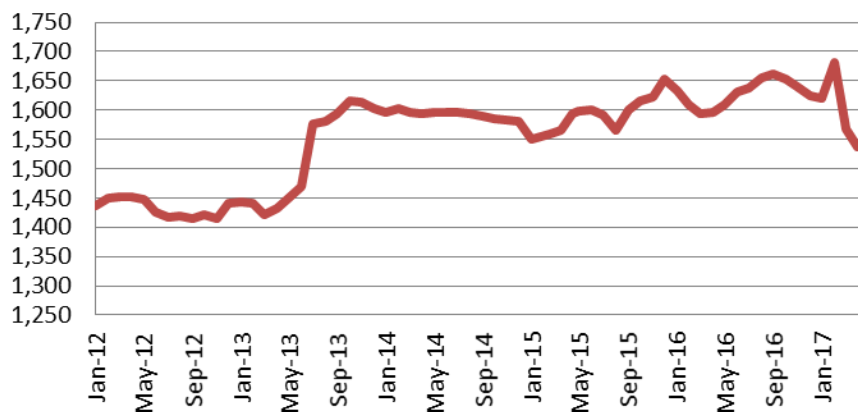
District Court Probation: Pre-Sentence Investigation 2012 - present



(data obtained from District Court)

Community Corrections

Adult Intensive Supervision Probation (AISP)
ADP 2012 - present



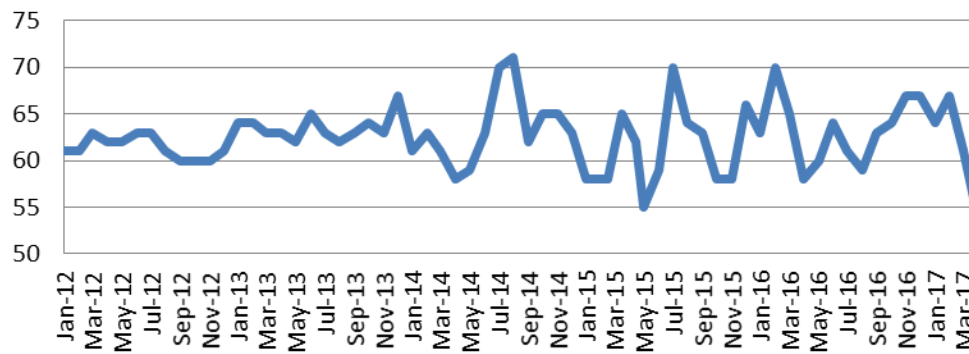
<u>April</u>	<u>April YTD Avg.</u>
2013 = 1,432	2013 = 1,434
2014 = 1,594	2014 = 1,597
2015 = 1,593	2015 = 1,567
2016 = 1,595	2016 = 1,608
2017 = 1,537	2017 = 1,601

(data obtained from SG CO Dept. of Corrections)

*KDOC changed population count to include drug court, residential and AISP beginning July 2013.

Adult Residential: ADP
2012 - present

<u>April</u>	<u>April YTD Avg.</u>
2013 = 63	2013 = 64
2014 = 58	2014 = 61
2015 = 62	2015 = 61
2016 = 58	2016 = 64
2017 = 54	2017 = 62



— Adult Residential

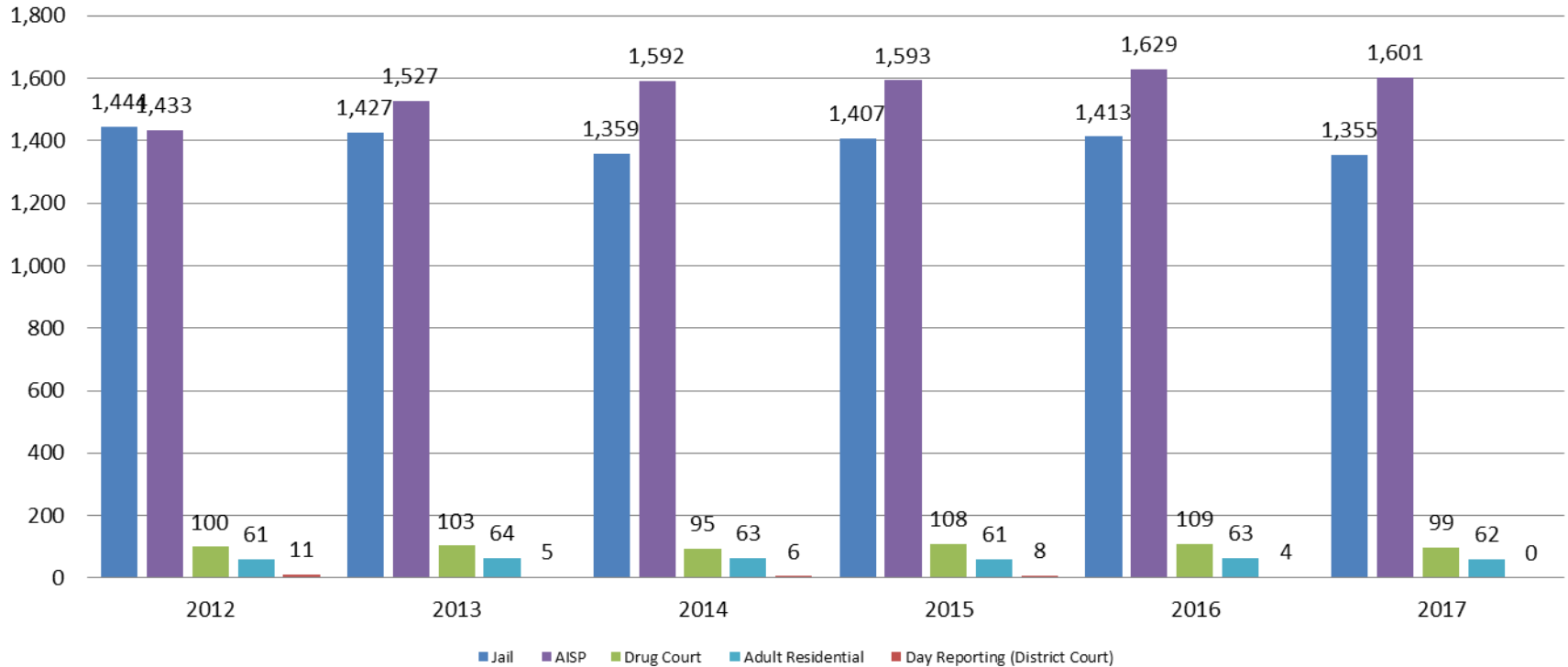
(data obtained from SG CO Dept. of Corrections)



Sedgwick County...
working for you

Correlation: Total & Sedgwick County Programs (Adult)

Total Annual ADP: 2012 - Present



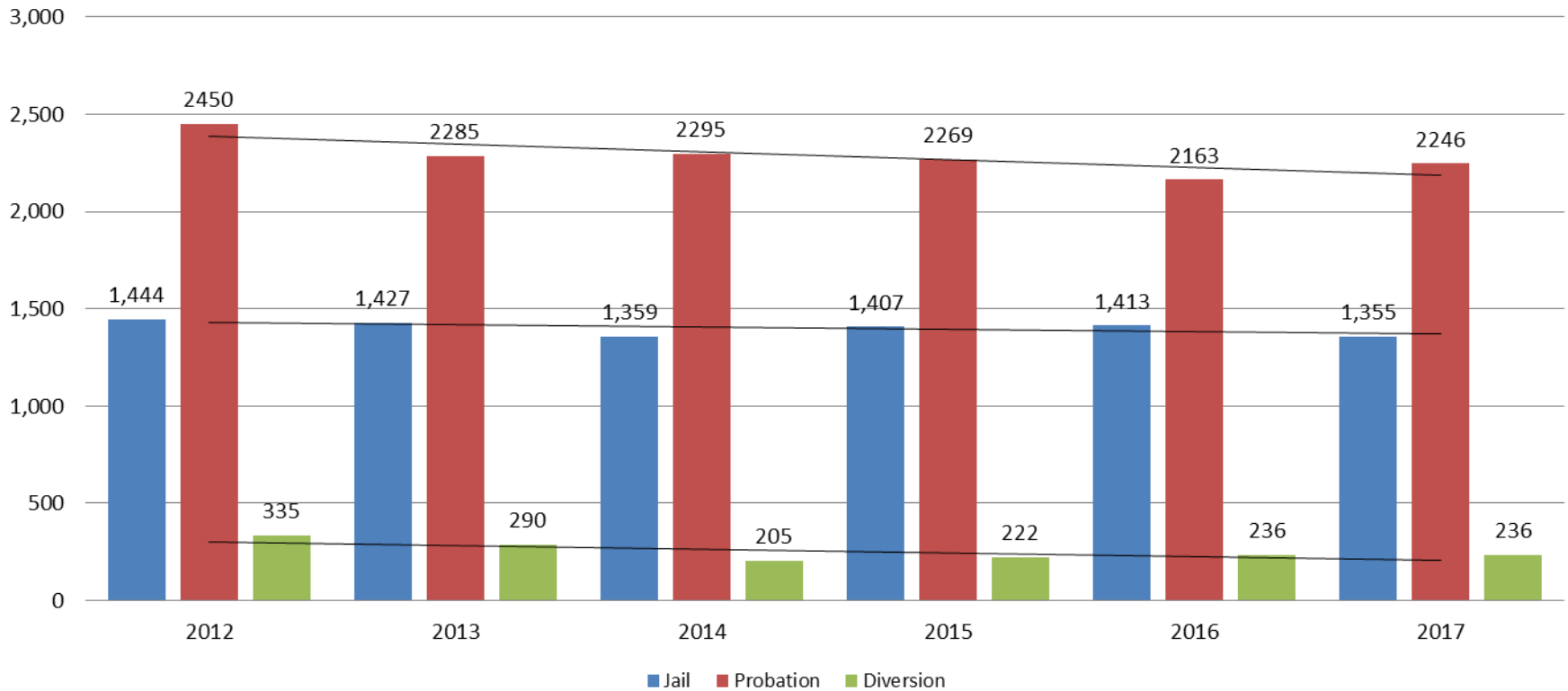
Jail includes individuals in booking, detention, work release and out-of county (combined)

(data obtained from detention facility, SG Dept. of Corrections, Pretrial Services, & CoW)



Correlation: Total & District Court Programs

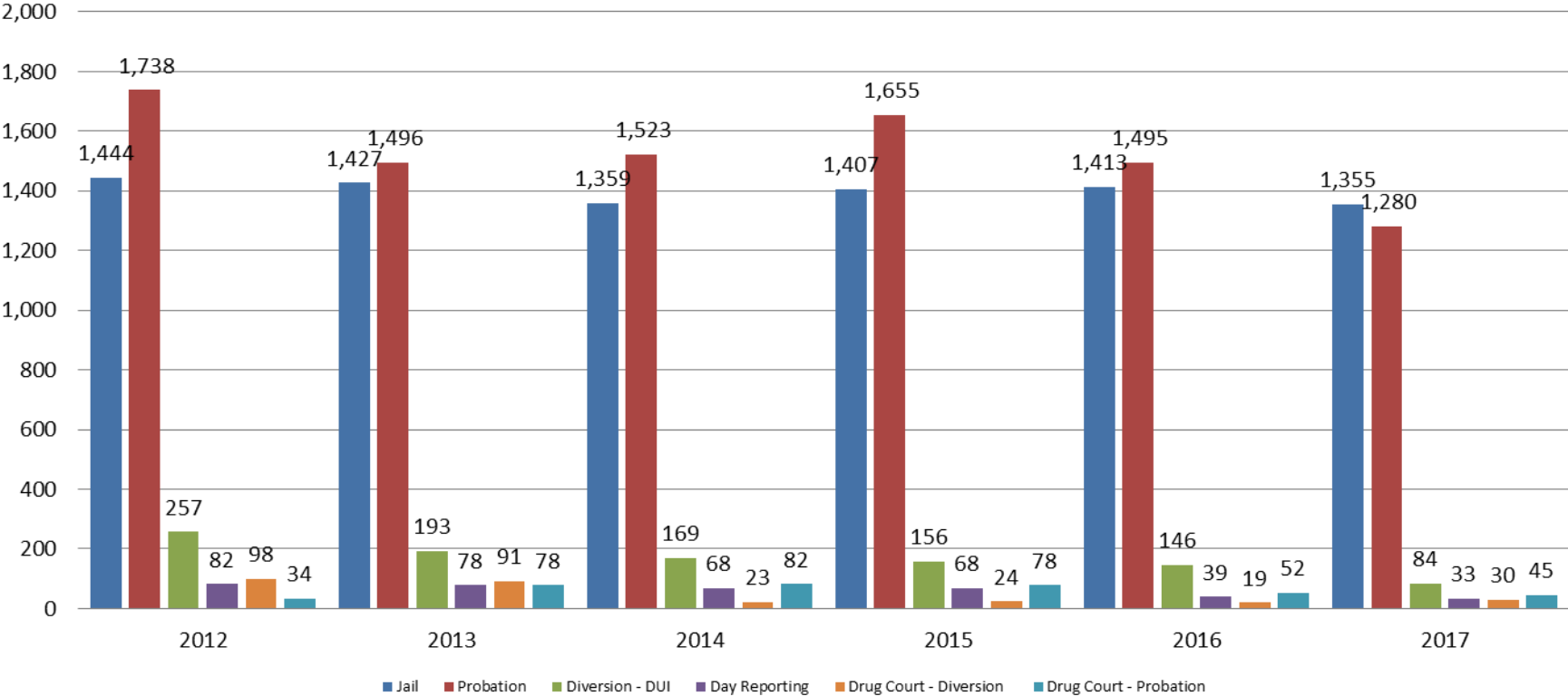
Total Annual ADP: 2012 - Present



Jail includes individuals in booking, detention, work release and out-of county (combined)

Correlation: Total & City of Wichita / Municipal Court Programs

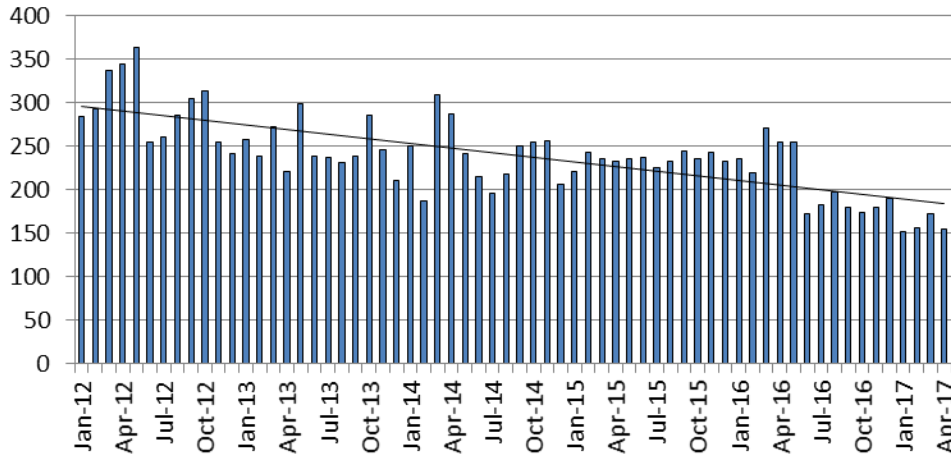
Total Annual ADP: 2012 - present



Jail includes individuals in booking, detention, work release and out-of county (combined)

Juvenile

JIAC Intakes: 2012 - present



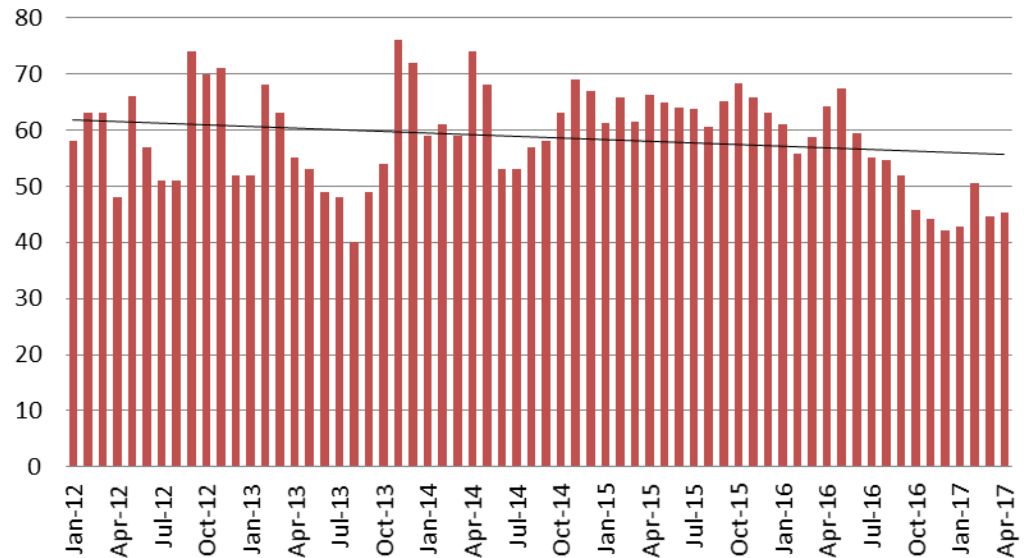
April	April YTD Average
2013 = 221	2013 = 247
2014 = 287	2014 = 258
2015 = 233	2015 = 233
2016 = 254	2016 = 245
2017 = 155	2017 = 159

(data obtained from SG CO Dept. of Corrections)

April	April YTD Avg.
2013 = 55	2013 = 60
2014 = 74	2014 = 63
2015 = 66	2015 = 64
2016 = 64	2016 = 60
2017 = 45	2017 = 46

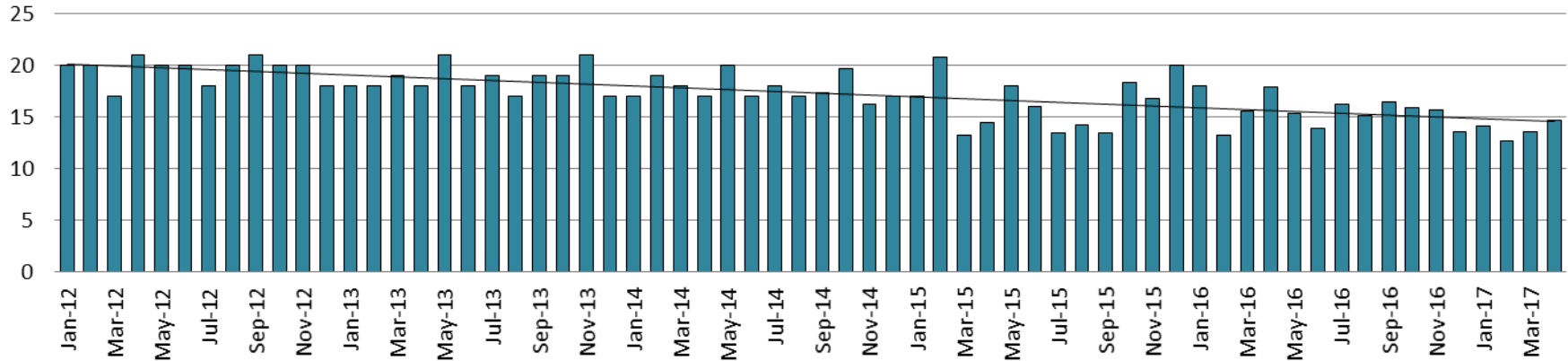
(data obtained from SG CO Dept. of Corrections)

JDF ADP: 2012 - present

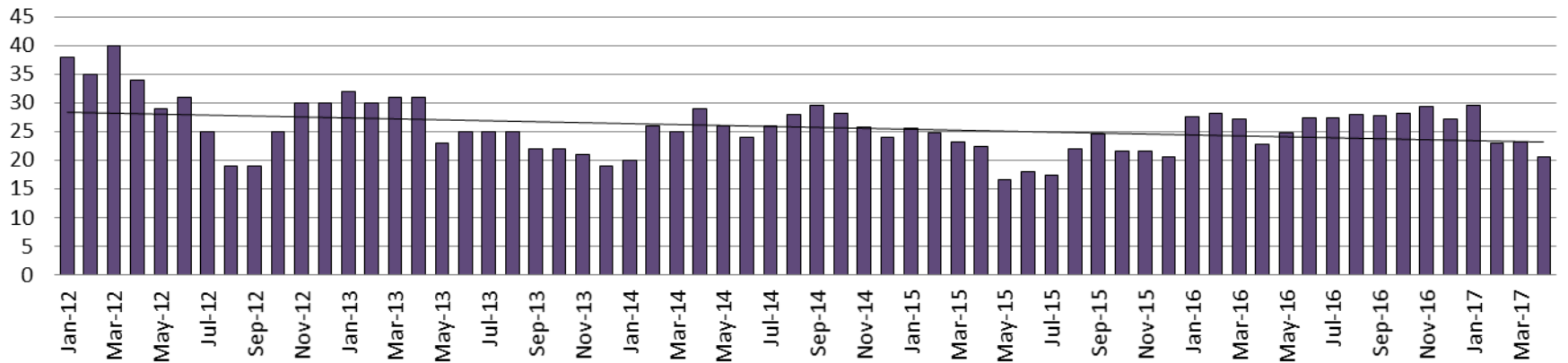


Juvenile Detention Alternatives

Juvenile Residential Facility (JRF) ADP: 2012 - present

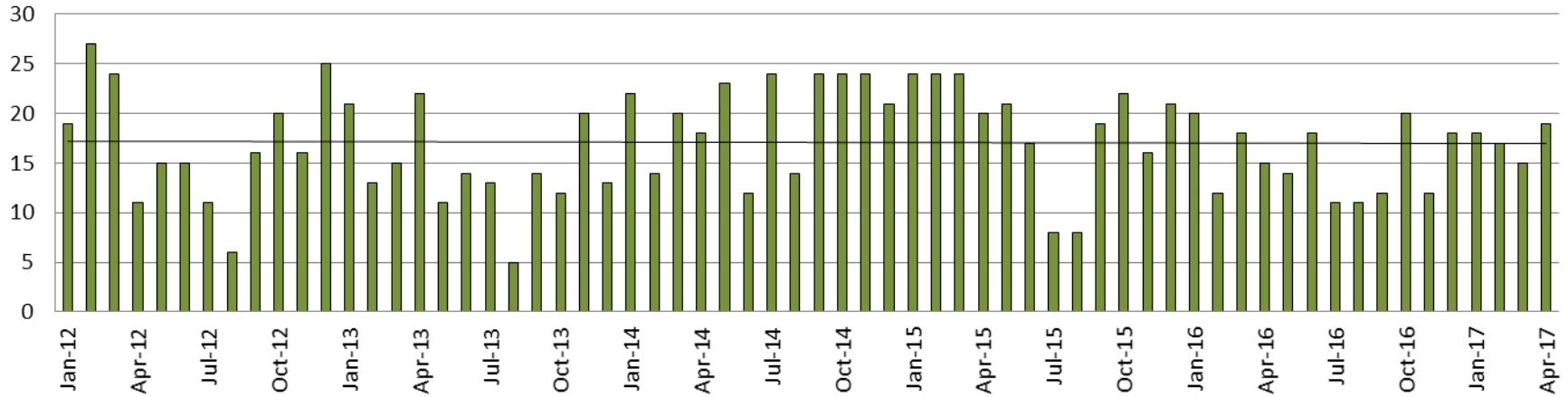


Home-Based Supervision ADP: 2012 - present

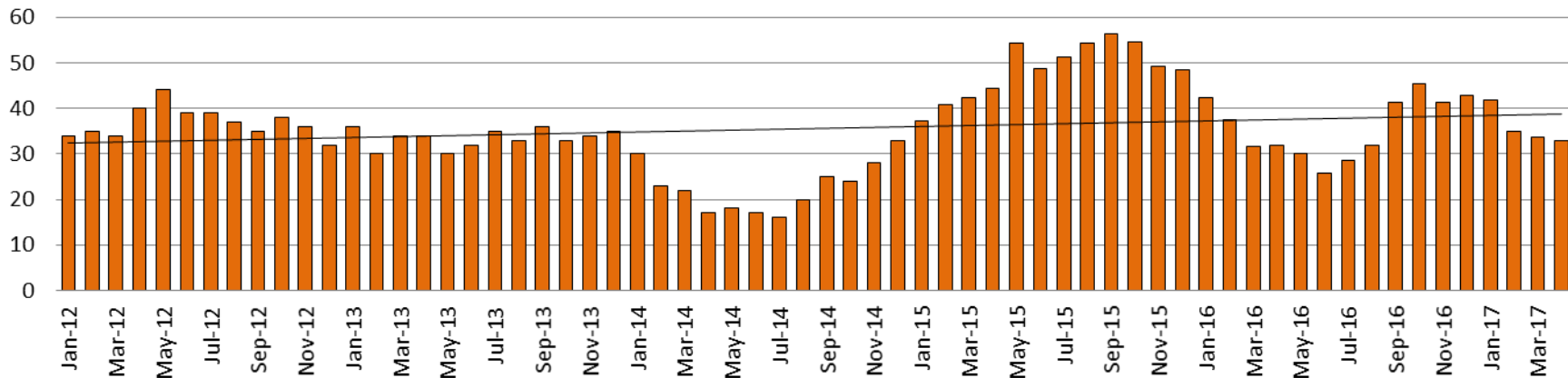


Juvenile Detention Alternatives

Weekend Alternative Detention Program 2012 - present



Detention Advocacy Case Management Services ADP: 2012 - present



Juvenile Detention Services

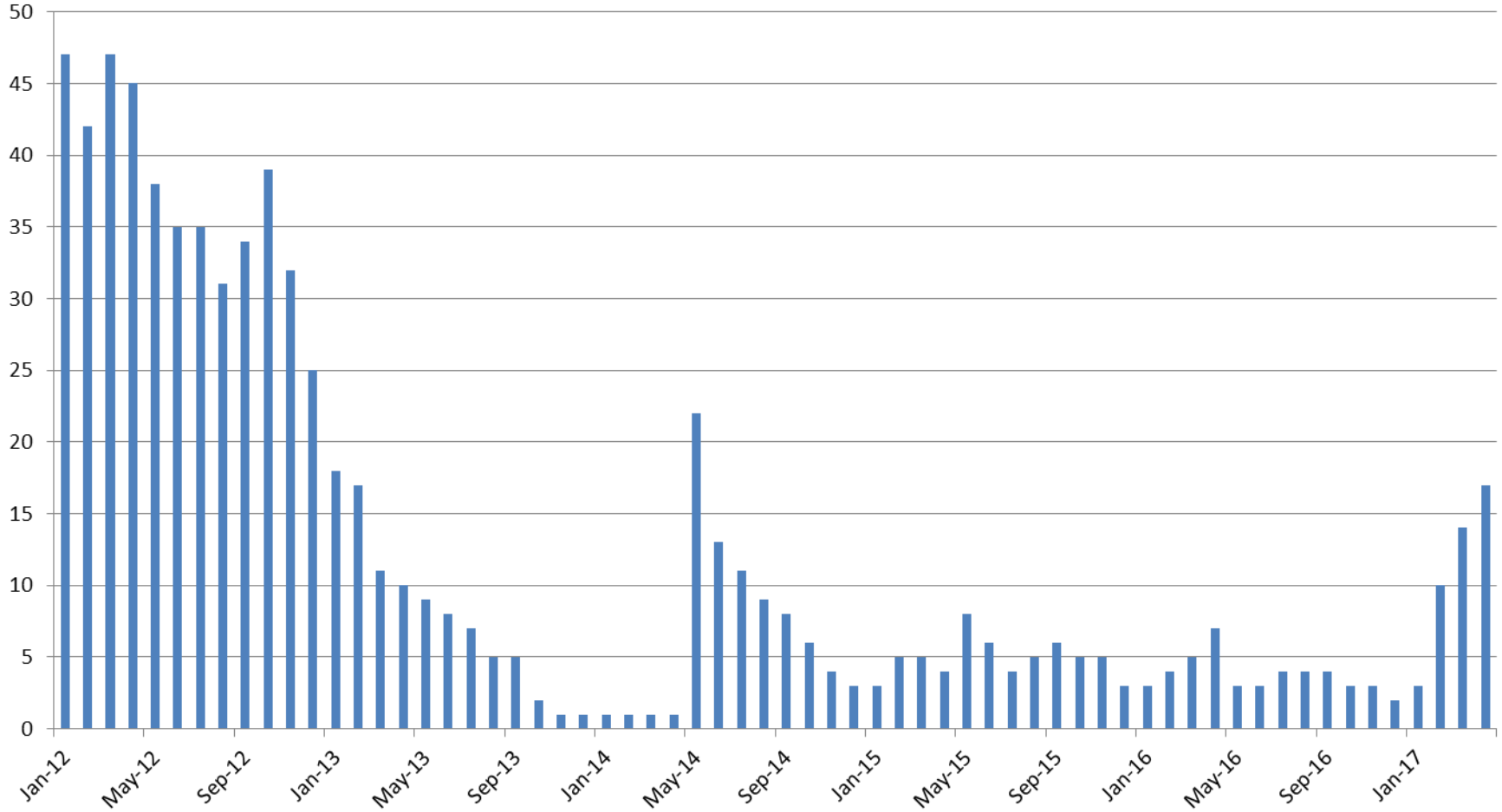
April ADP	2014	2015	2016	2017
Juvenile Detention Facility	74	66	64	45
Juvenile Residential Facility	17	14	18	15
Home Based Supervision	29	22	23	21
Detention Advocacy Case Management Services	17	48	32	33
Weekend Alternative Detention Program (total)	18	20	15	19

April YTD AVERAGE	2014	2015	2016	2017
Juvenile Detention Facility	63	64	60	46
Juvenile Residential Facility	18	16	16	14
Home Based Supervision	25	24	26	24
Detention Advocacy Case Management Services	23	41	36	36
Weekend Alternative Detention Program	19	23	16	17



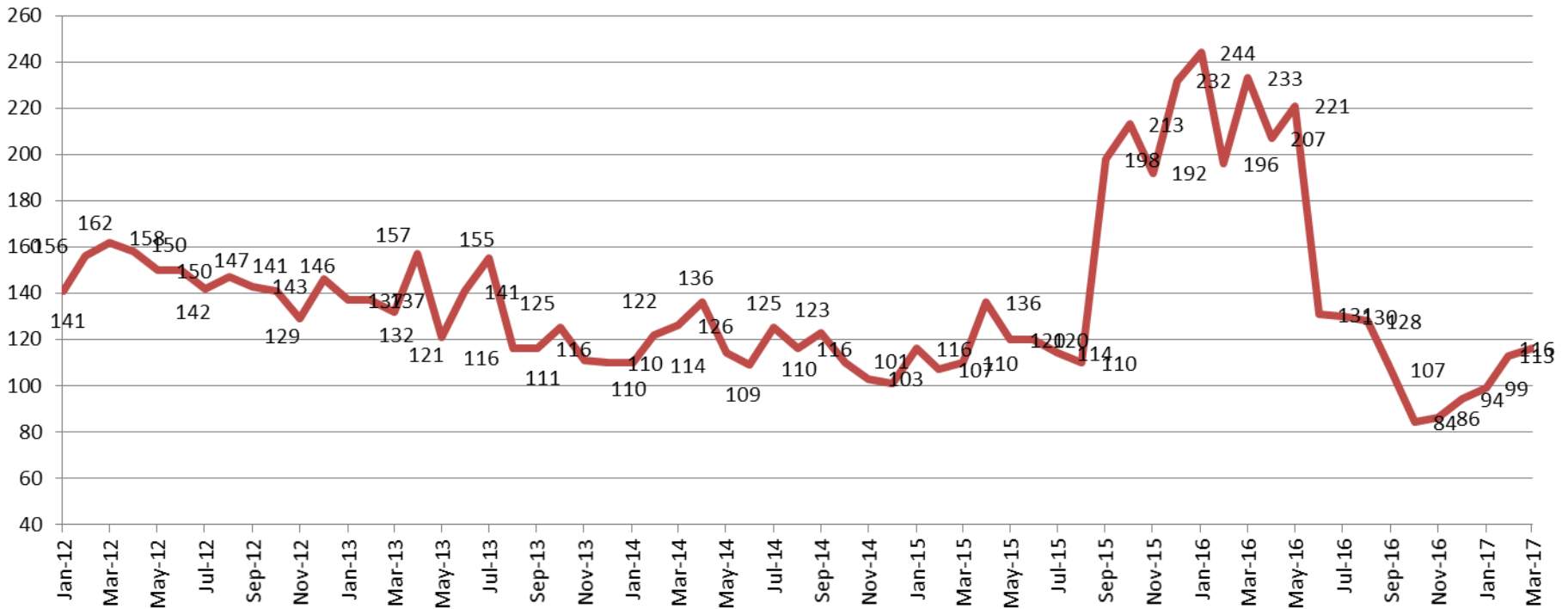
Monthly Jail Snapshot: April 30, 2017

BICE Holds 2012-Present



Monthly Jail Snapshot: April 30, 2017

Felony Commitments: February 2012 - present



April:

2012 = 162

2013 = 132

2014 = 126

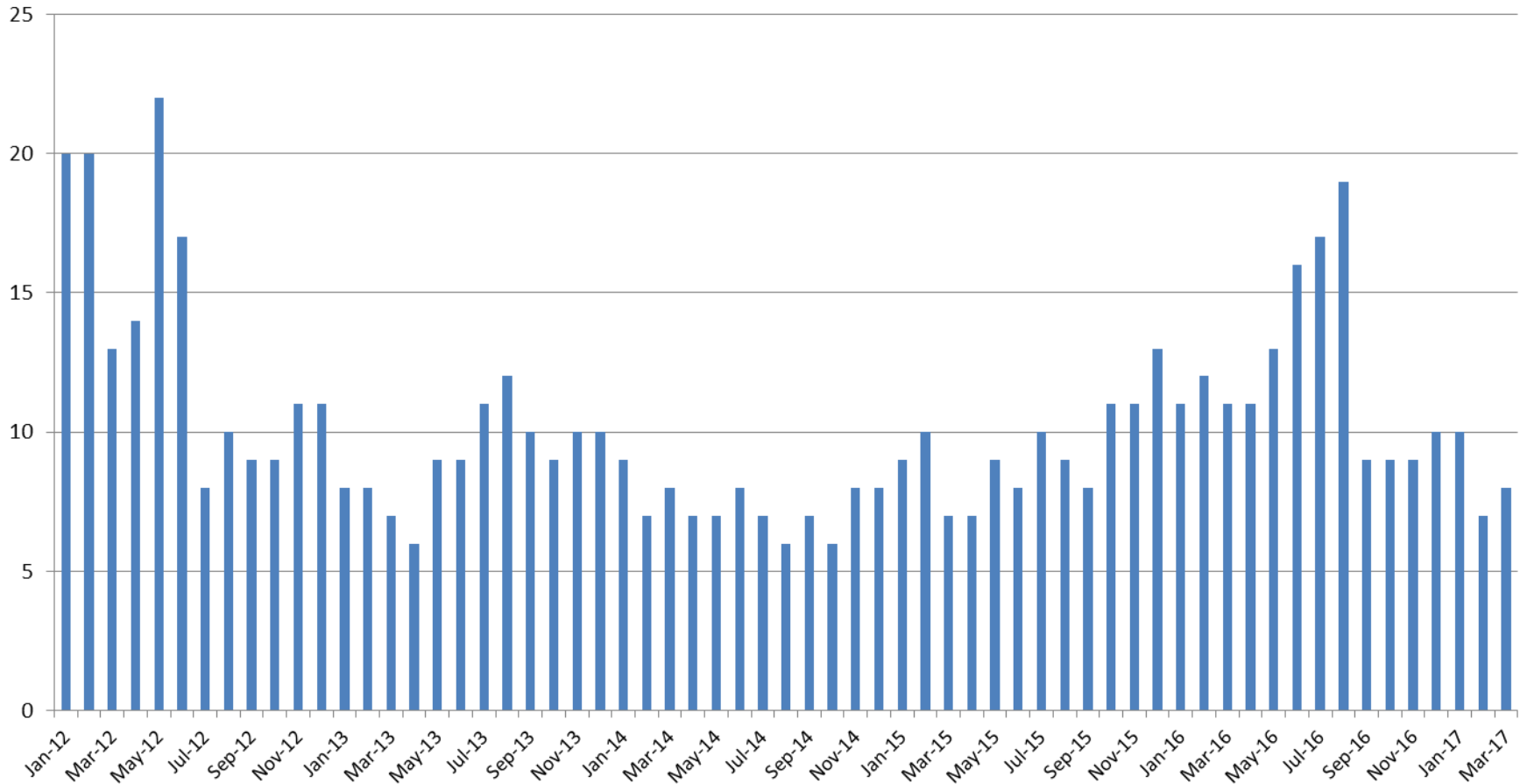
2015 = 110

2016 = 233

2017 = 116



Journal Entry Completion (Average Days) January 2013-Present



This data is always reported a month behind

