

# Criminal Justice Coordinating Council

## Population Report & Program Trends

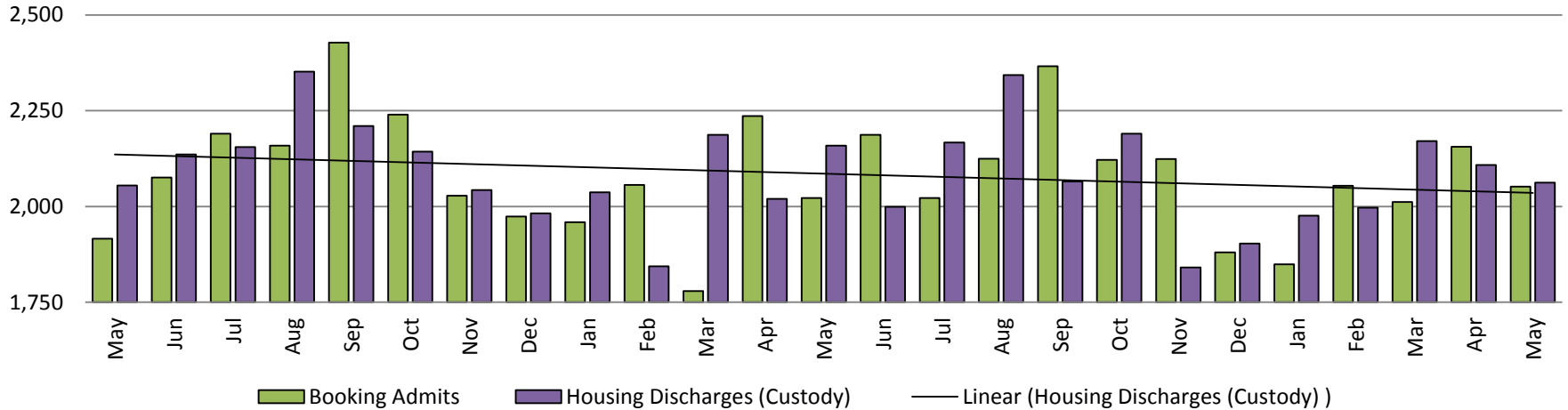
May 2019



*Sedgwick County...*  
*working for you*

# Detention Facility

## Booking Admits & Housing Discharges from Custody May 2017-Present

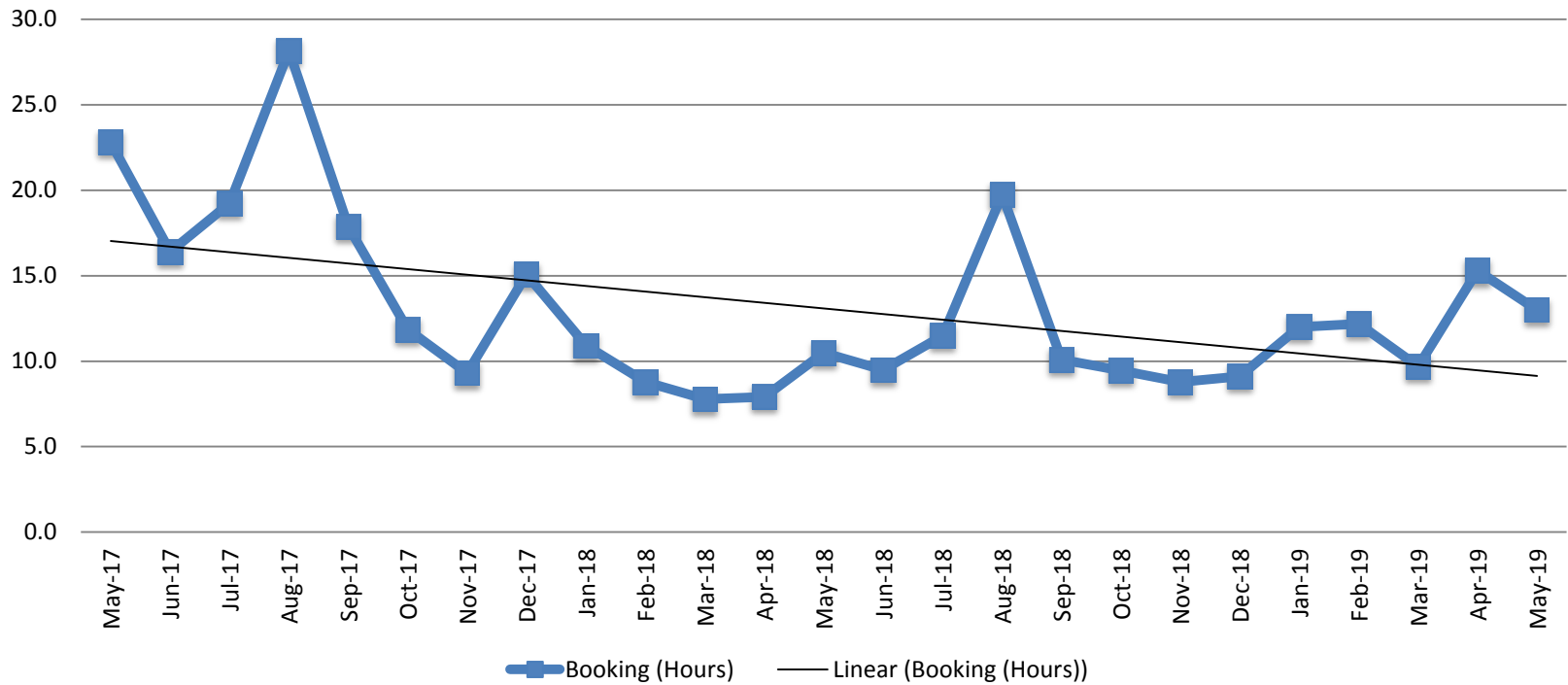


## Bookings Year over Year: Month of May



Bookings May	Housing Discharges May
2017: 2,076	2017: 2,055
2018: 2,187	2018: 2,159
2019: 2,092	2019: 2,062

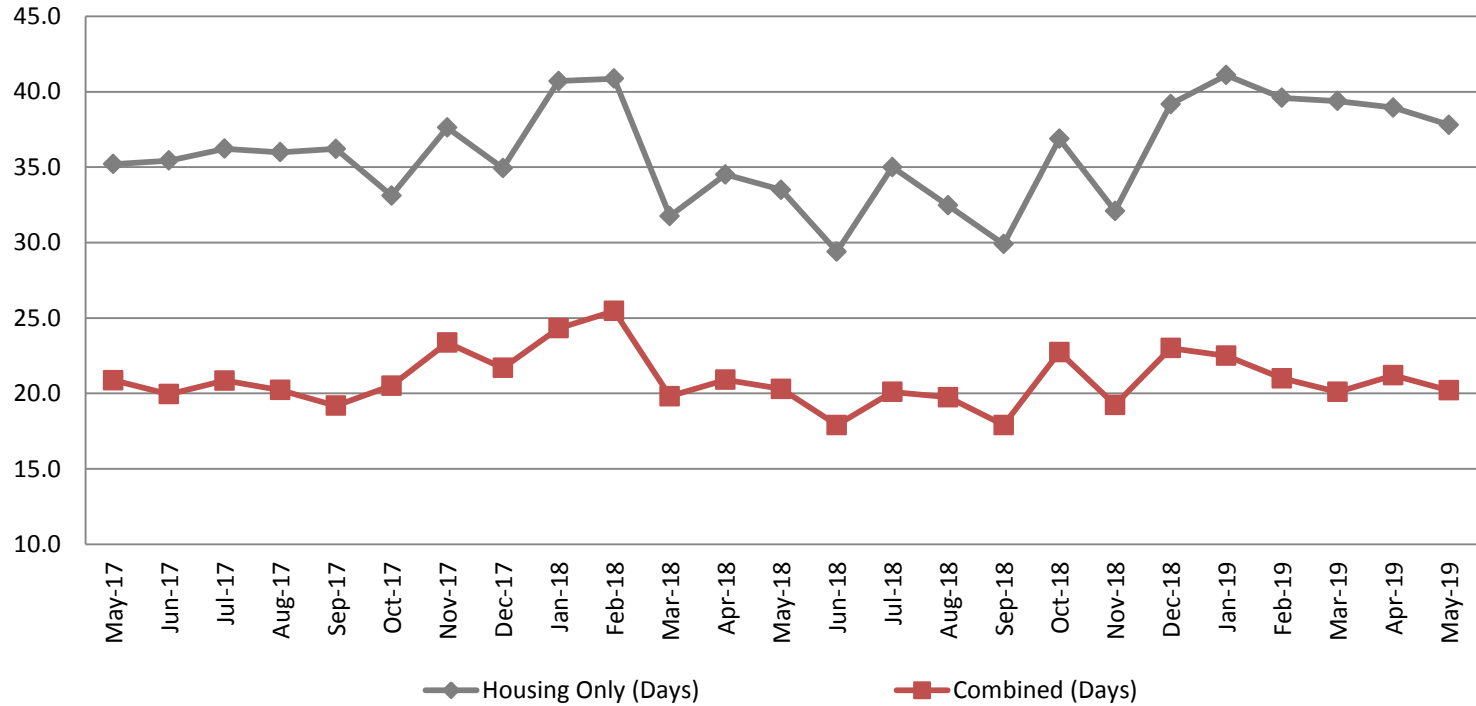
## Average Length of Stay: Booking (Hours) May 2017 - Present



<b>May</b>	<b>May YTD Average</b>
2017: 22.8	2017: 15.7
2018: 10.5	2018: 9.2
2019: 13.0	2019: 12.4

## Average Length of Stay: Housing & Combined (Days)

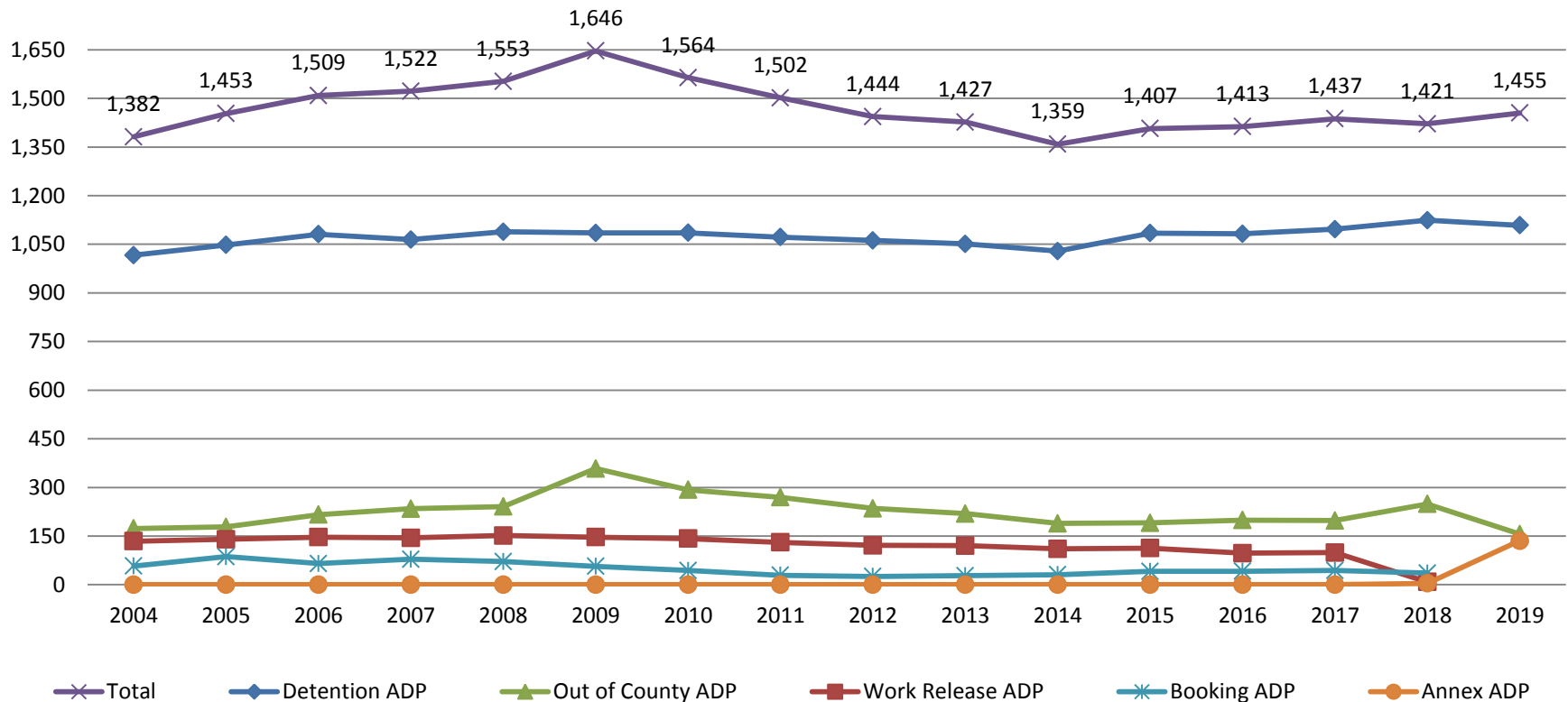
### May 2017 - Present



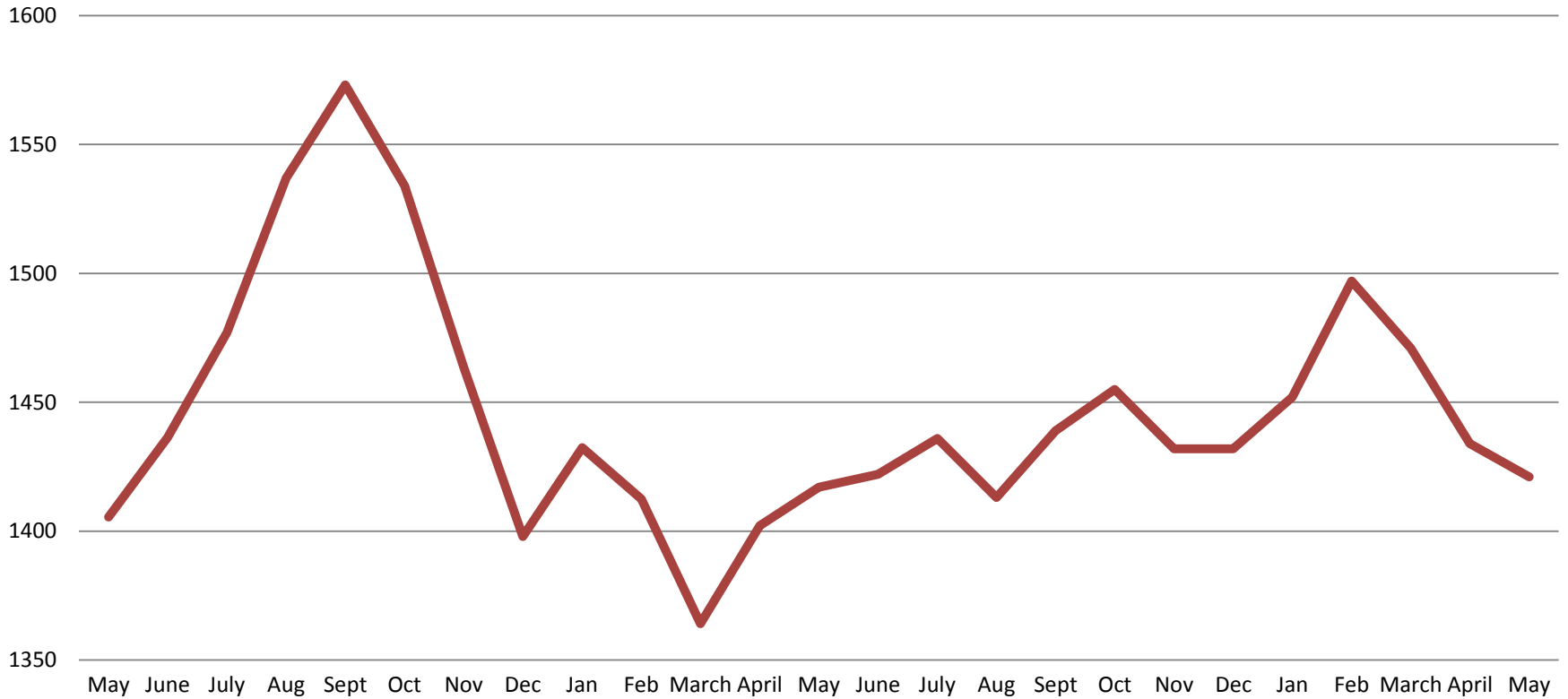
Month Year	Housing Only	Housing YTD AVG	Combined Days	Combined YTD AVG
May 2017	35.2	34.5	20.9	20.1
May 2018	33.5	36.3	20.3	22.2
May 2019	37.8	39.4	20.2	21.0

# Jail: Annual Average Daily Population (ADP)

**TRENDS: Booking, Detention, Work Release, & Out of County Annual ADP: 2004 - present**

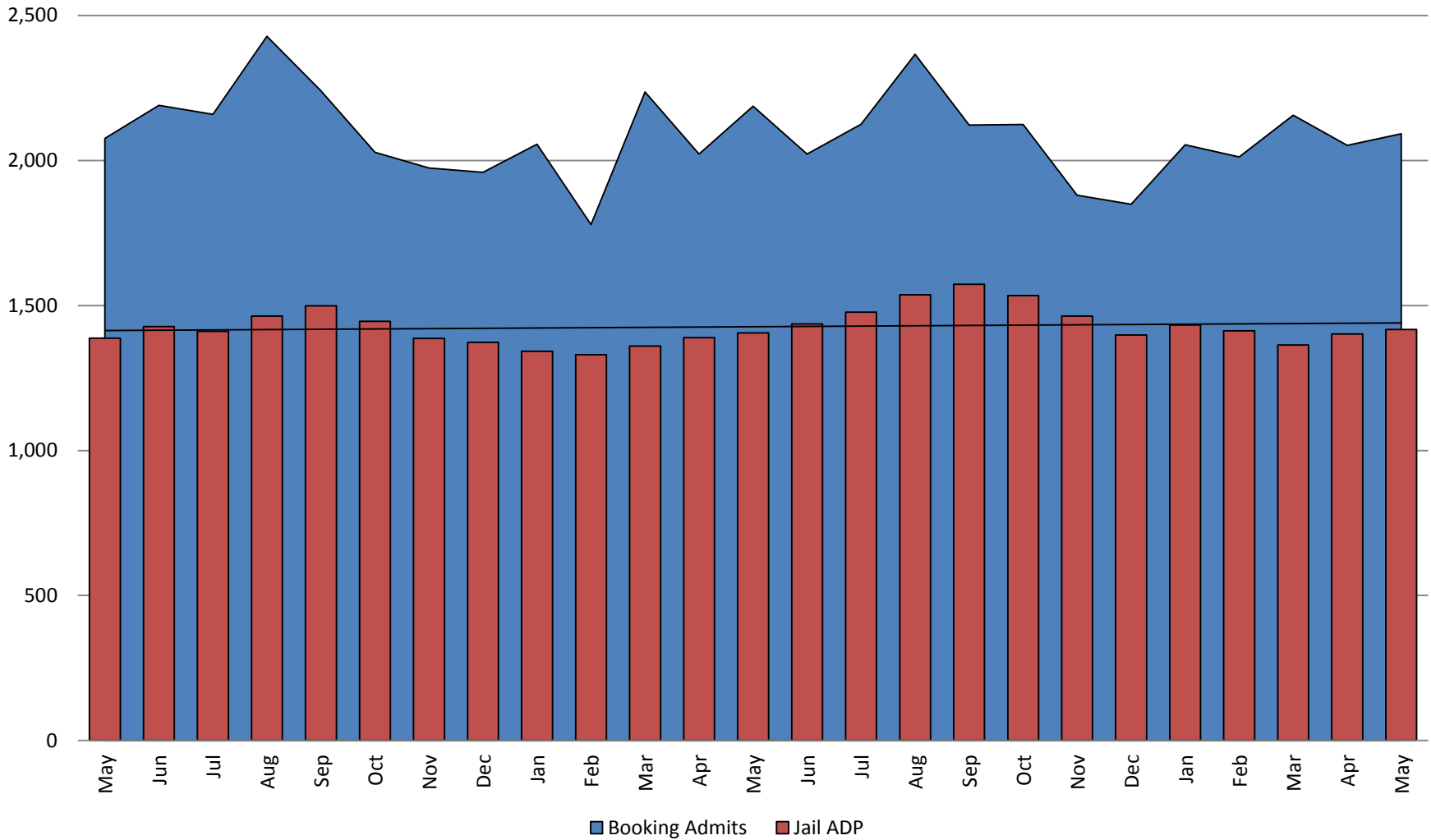


# TOTAL MONTHLY ADP: JAIL (Booking, Detention Facility, Annex, & Out of County) May 2017 - present



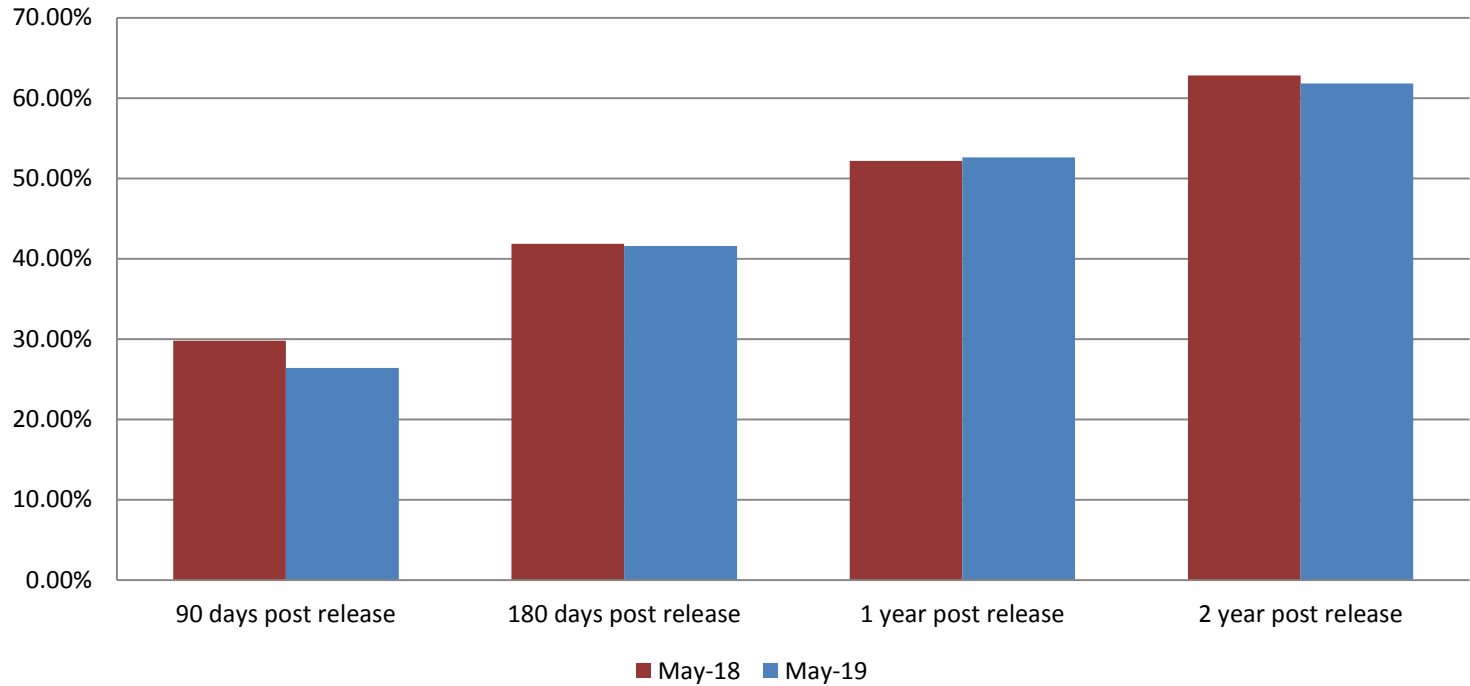
May 2017	May 2018	May 2019
1,405	1,417	1,421

## Booking Admits & Total Monthly ADP (Jail): May 2017 - present



Jail includes individuals in booking, detention, work release and out-of county (combined)  
(data obtained from detention facility)

## Percent of released inmates rearrested May

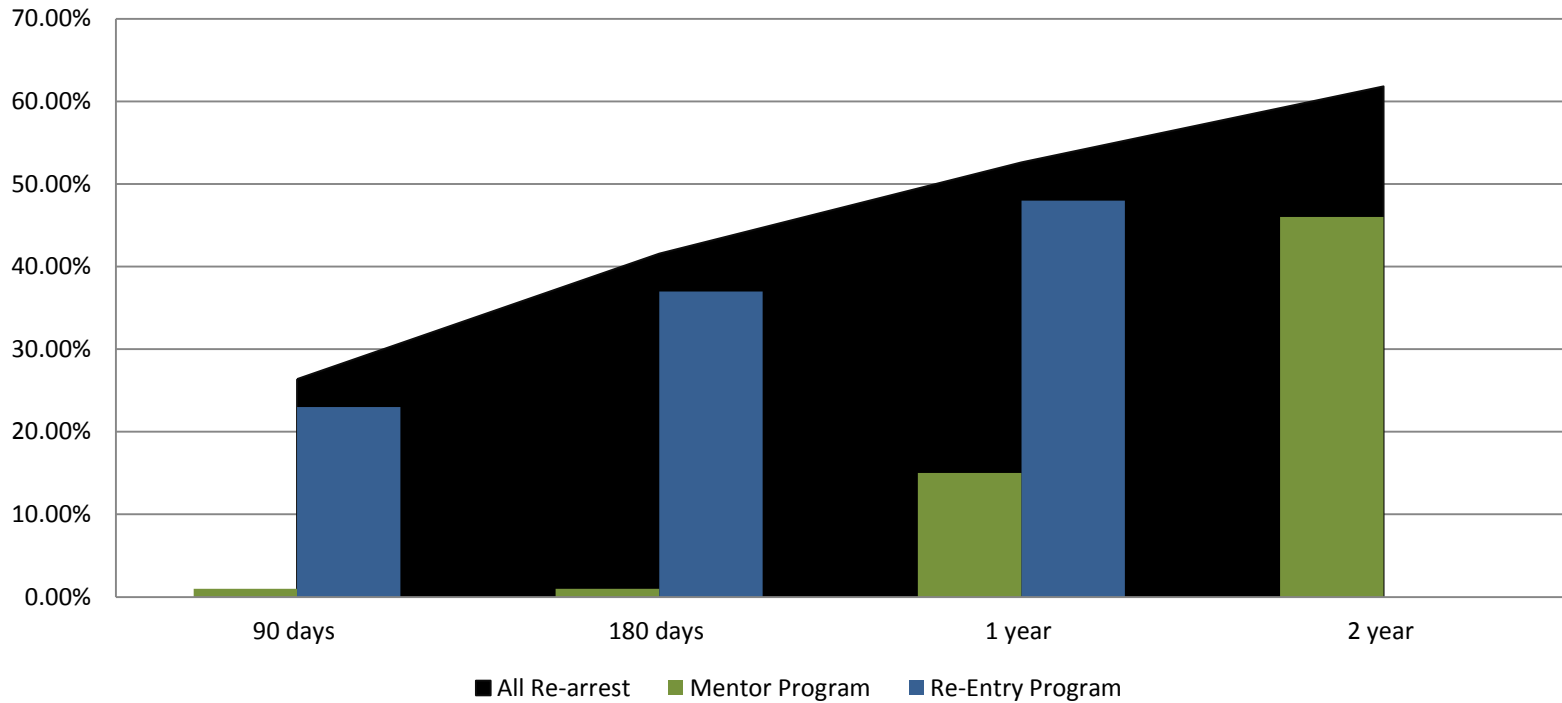


Month Year	90 Days	180 Days	1 Year	2 Years
May 2018	29.80%	41.88%	52.18%	62.81%
May 2019	26.38%	41.57%	52.62%	61.82%





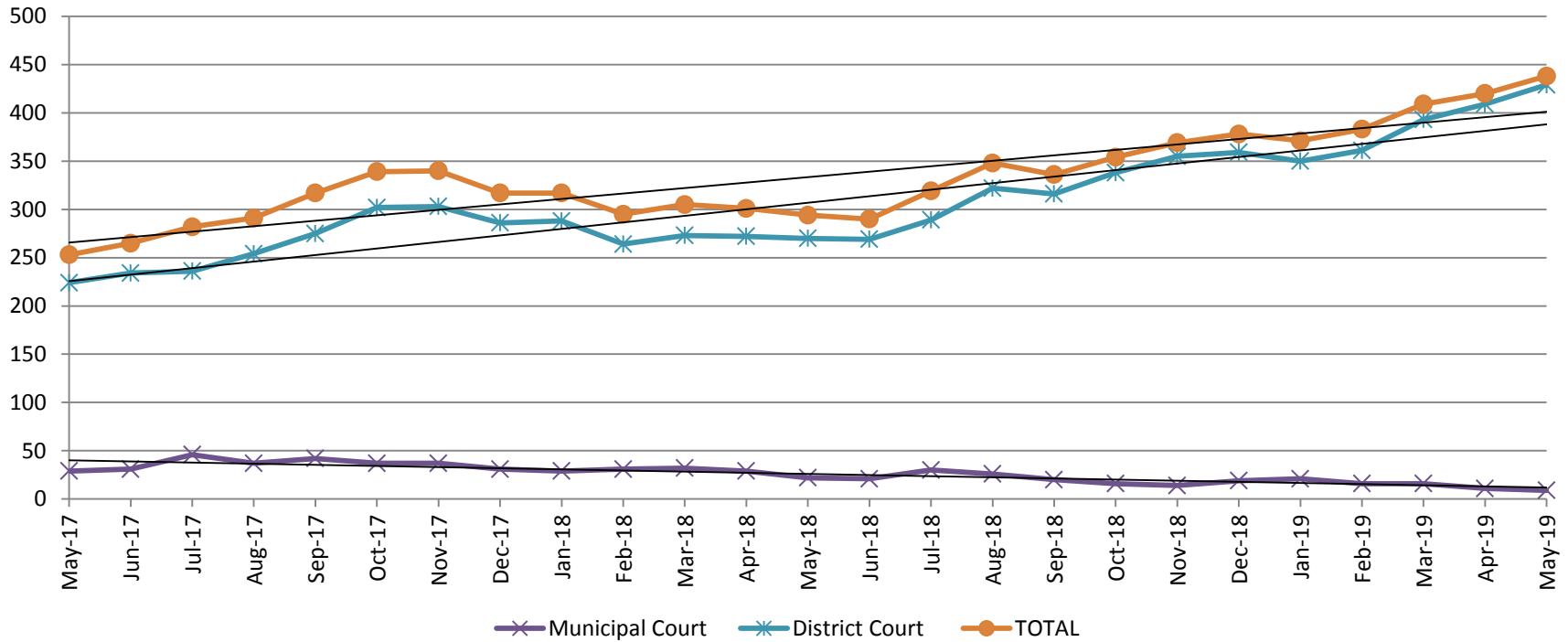
## Recidivism by Programs May 2019



May 2019	90 Days	180 Days	1 year	2 years
All Re-arrests	26.38%	41.57%	52.62%	61.82%
Mentor Program	1%	1%	15%	46%
Re-Entry Program	23%	37%	48%	N/A



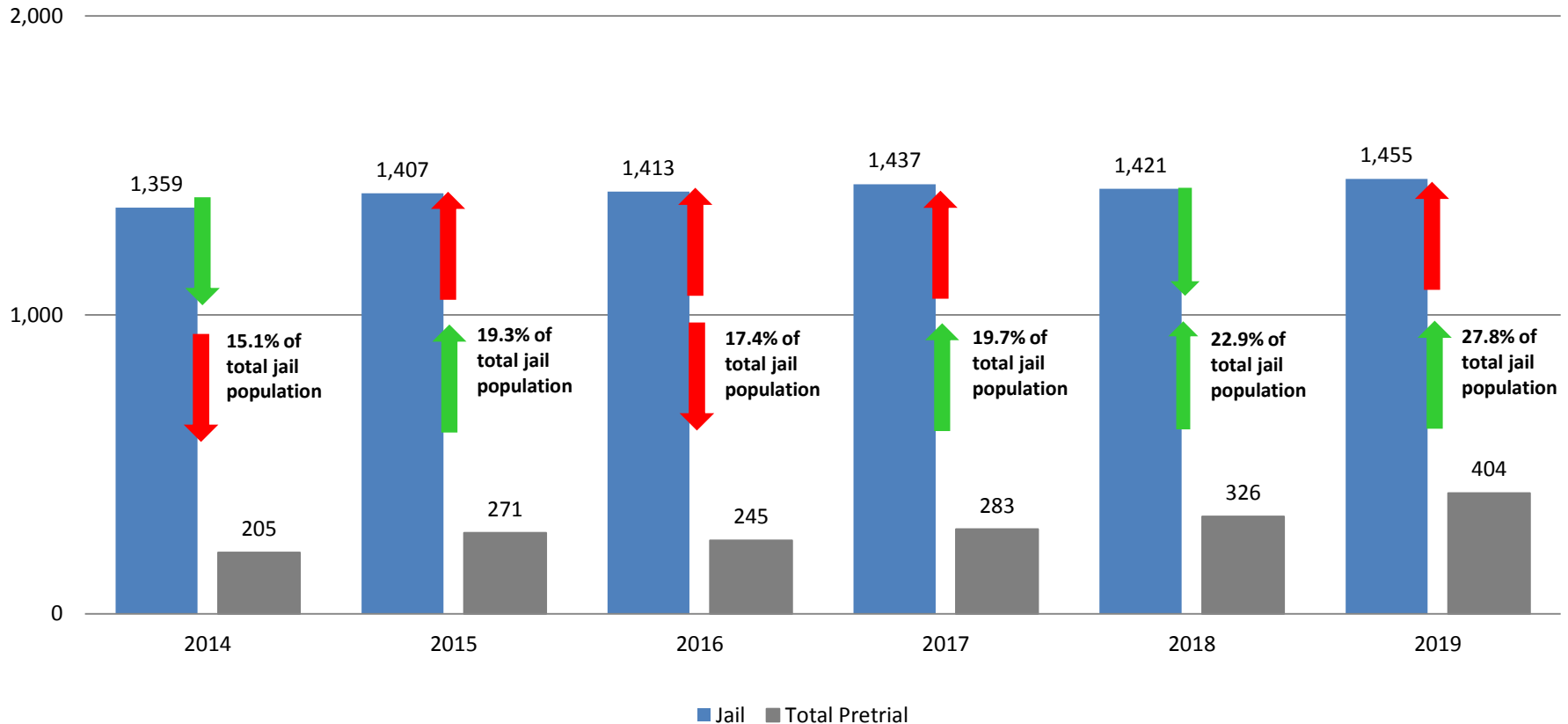
## Pretrial Services Program (PSP) Monthly ADP: May 2017 - Present



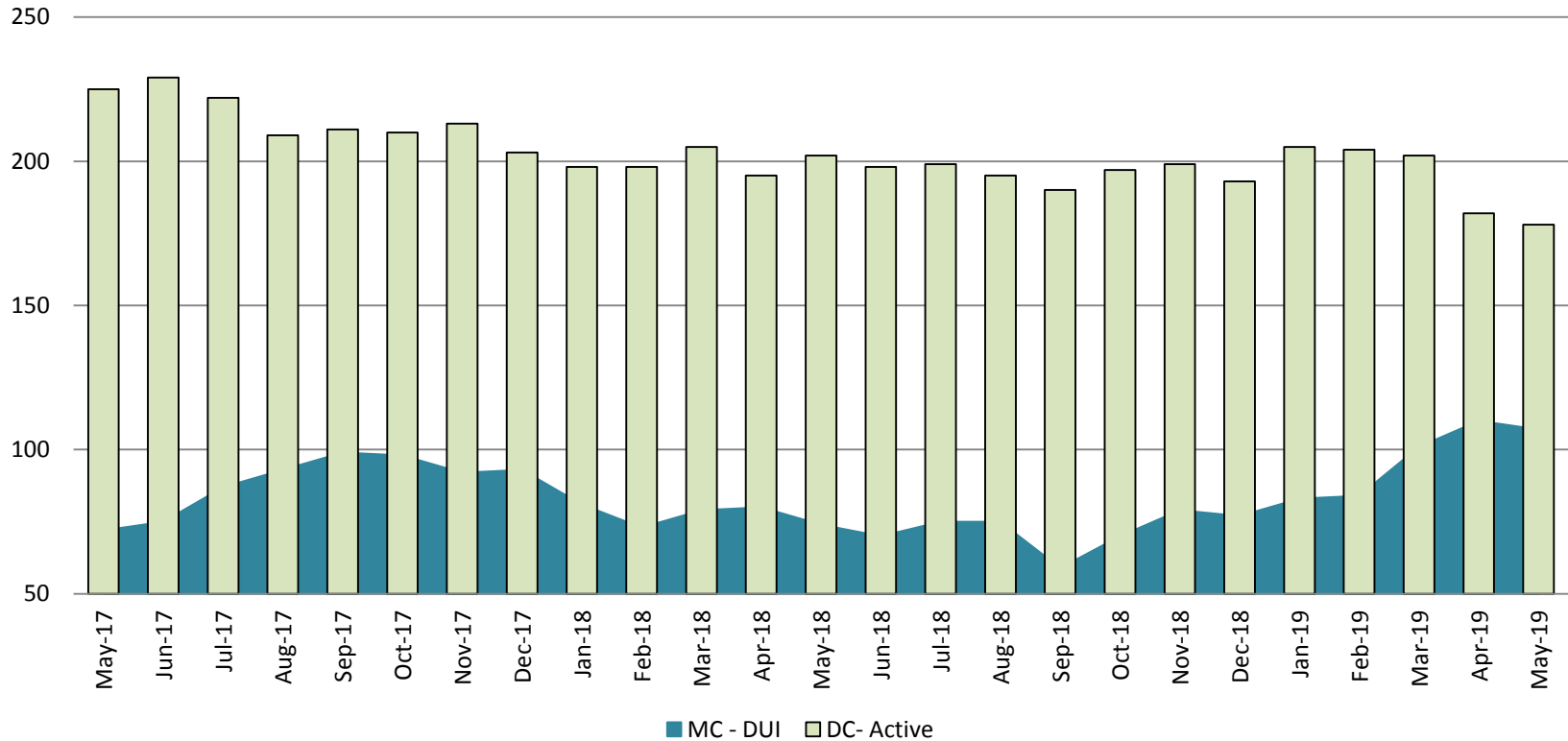
May	2017 ADP	2018 ADP	2019 ADP	2017 YTD Avg.	2018 YTD Avg.	2019 YTD Avg.
Muni. Court	29	22	9	33	29	15
Dist. Court	224	270	429	215	273	388
<b>Total</b>	<b>253</b>	<b>292</b>	<b>438</b>	<b>249</b>	<b>302</b>	<b>403</b>

# Correlation: Total & PSP

## Total Annual ADP: 2014 - Present

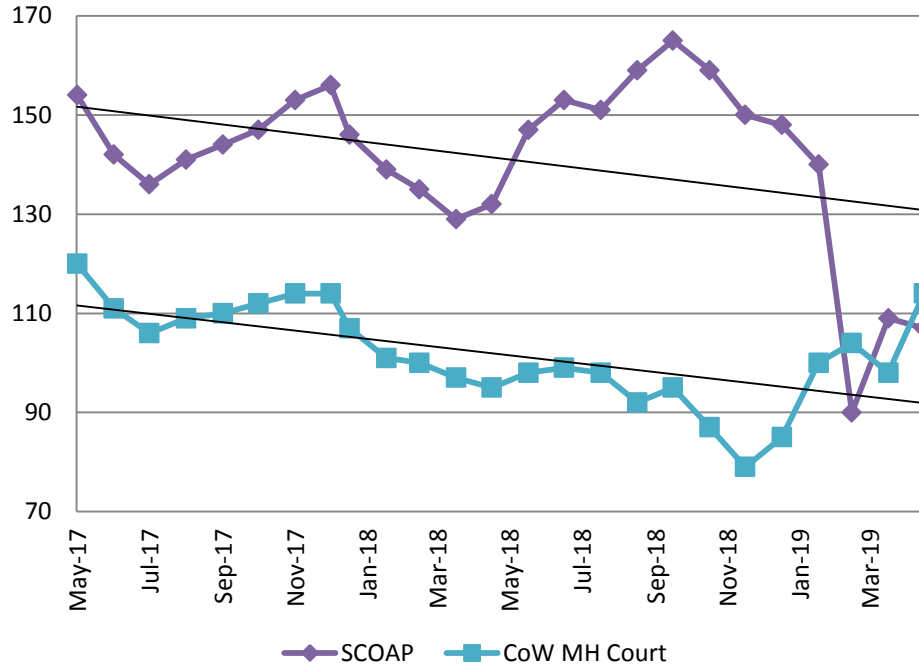


## Diversion - Active Caseload May 2017- Present

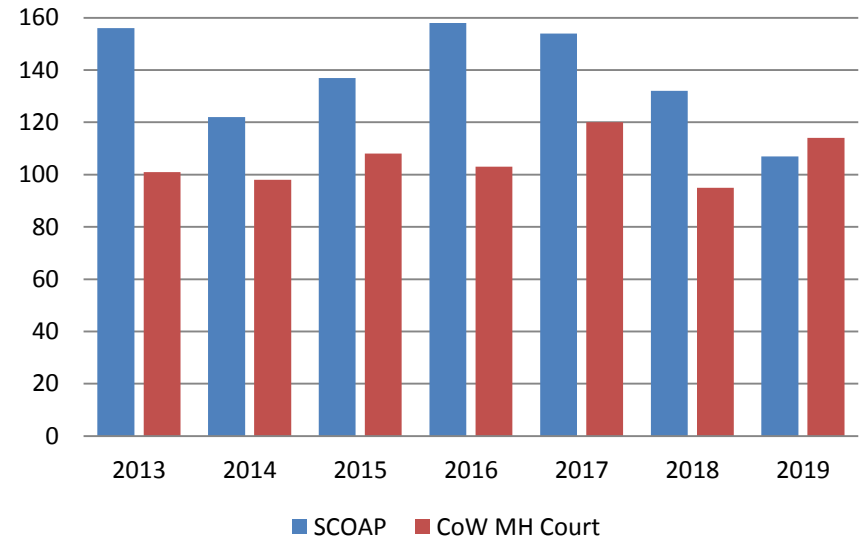


May	2017	2018	2019	2017 YTD Avg.	2018 YTD Avg.	2019 YTD Avg.
Muni. Court- DUI	72	74	107	82	77	97
Dist. Court- Active	225	202	178	233	200	194

## Mental Health - ADP May 2017 - present

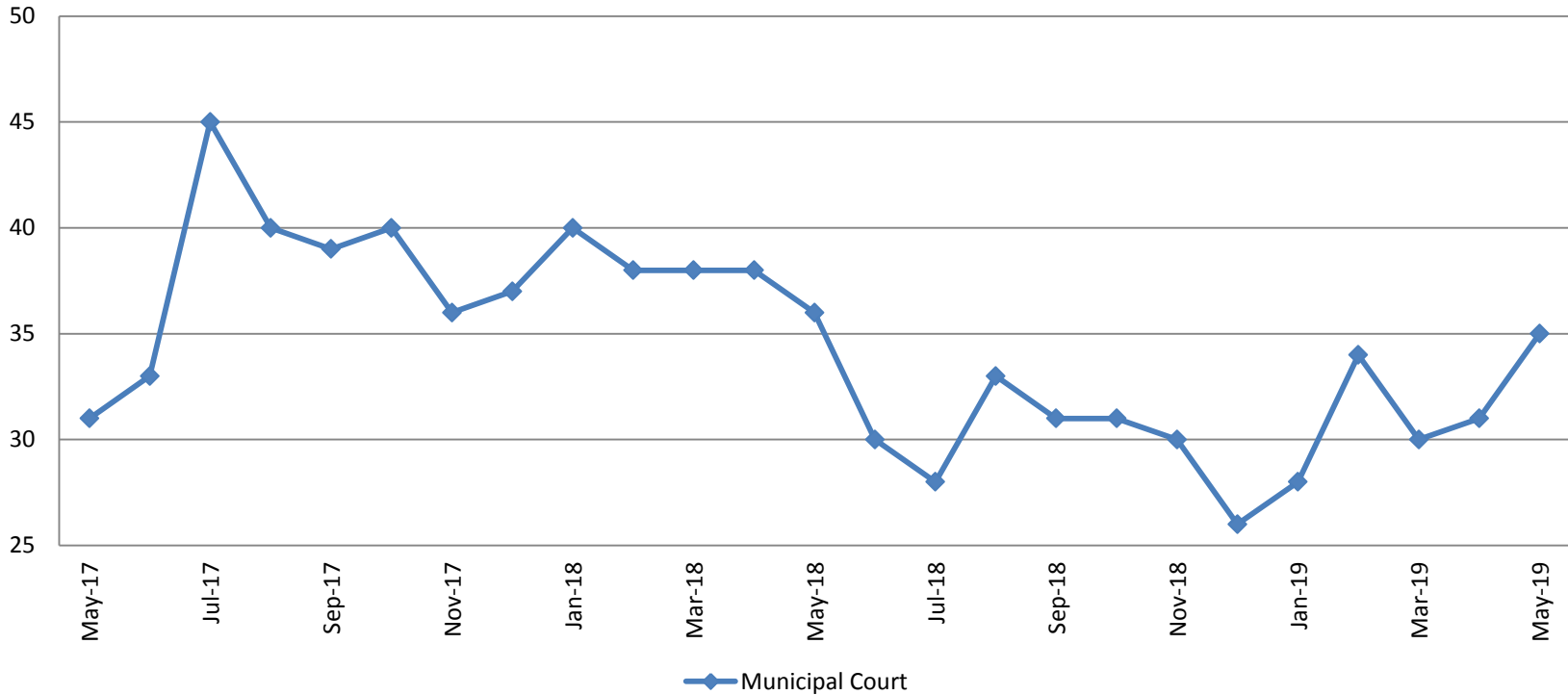


## Mental Health ADP Year over Year- May



May	2017 ADP	2018 ADP	2019 ADP	2017 YTD Avg.	2018 YTD Avg.	2019 YTD Avg.
SCOAP	154	132	107	155	136	119
MH Court	120	95	114	123	100	100

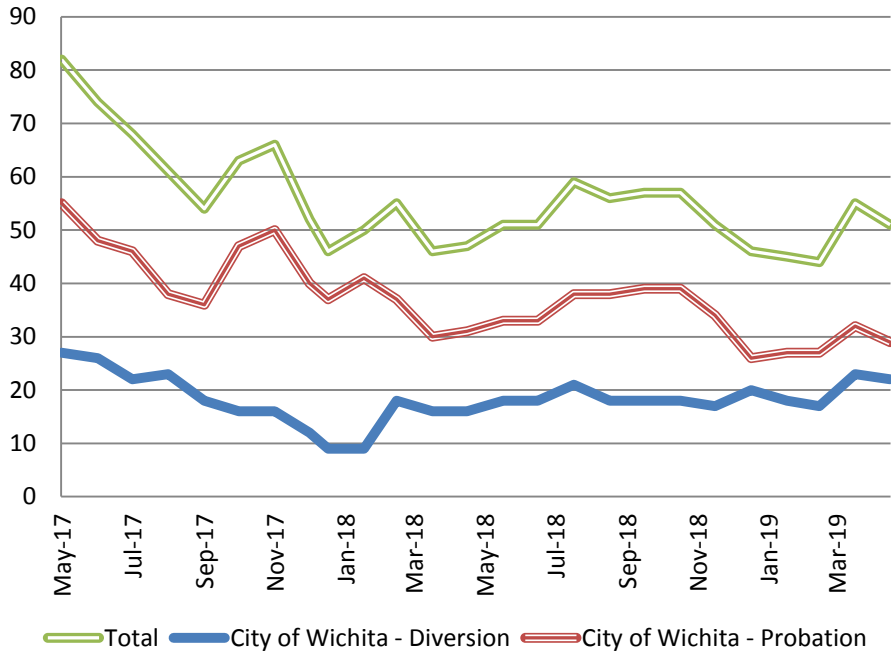
## Day Reporting - Active Caseload May 2017 - Present



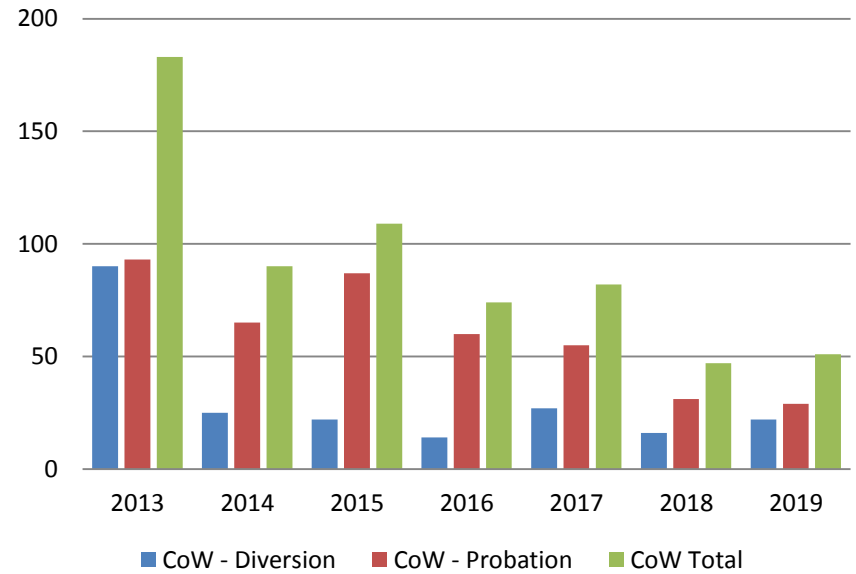
May	2014	2015	2016	2017	2018	2019
Muni. Court	79	79	48	31	36	35
Muni. Court YTD Avg.	77	72	48	33	38	32



## Drug Court - City of Wichita ADP: May 2017 - present



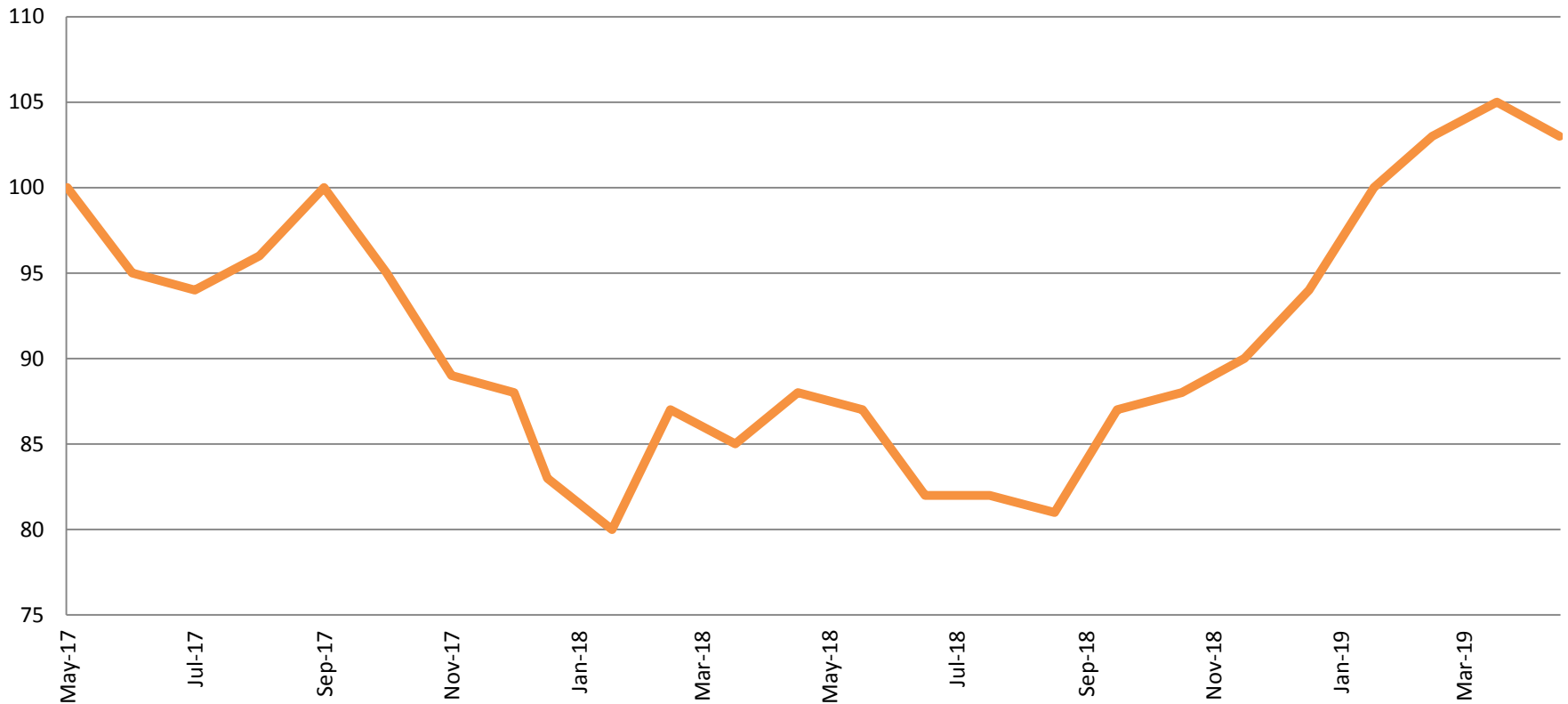
## Drug Court- City of Wichita Year over Year - May



May	2017	2018	2019
Diversion	27	16	22
Probation	55	31	29
Total	82	47	51



## Drug Court - Sedgwick County ADP: May 2017 - present

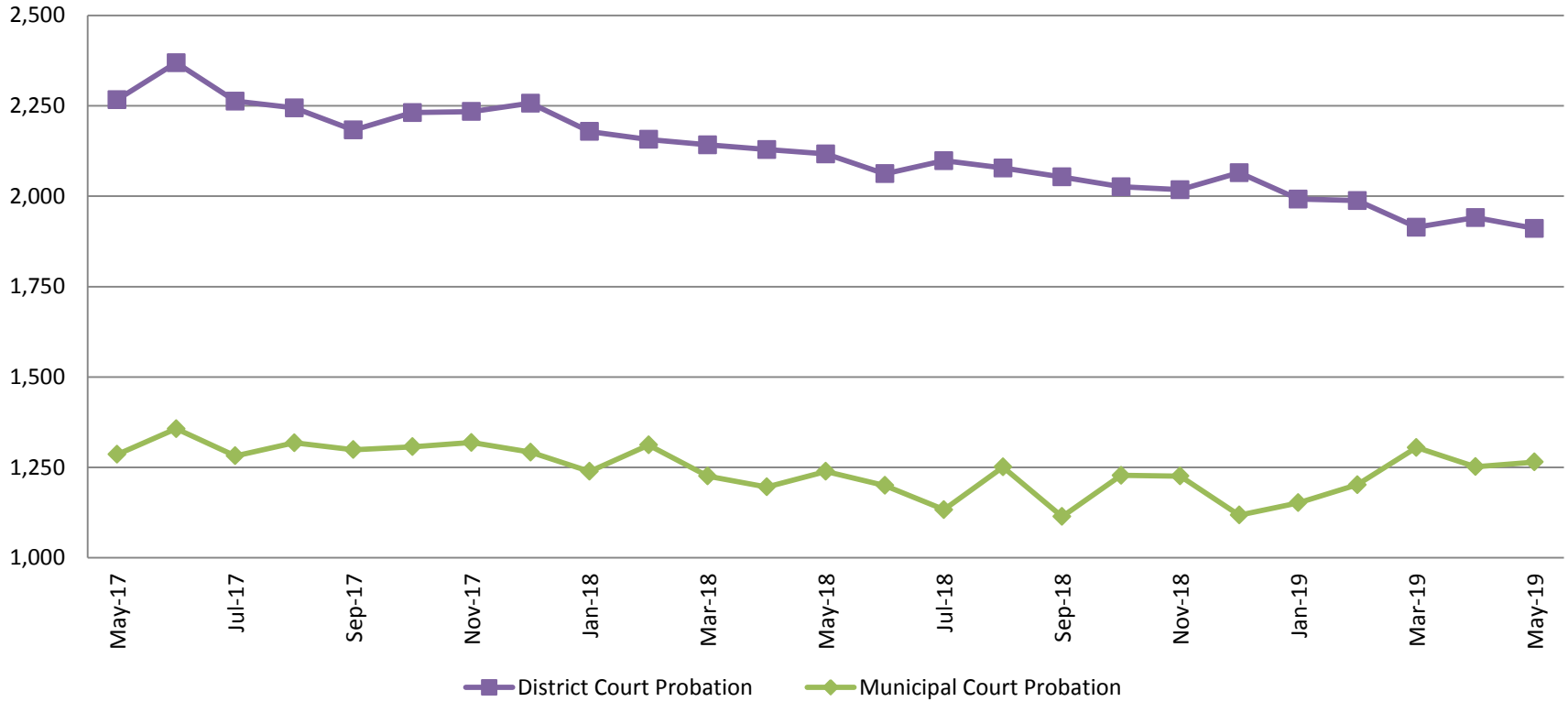


<b>May</b>	<b>2017</b>	<b>2018</b>	<b>2019</b>
Sedg. Co. ADP	100	88	103
YTD Avg.	98	85	101





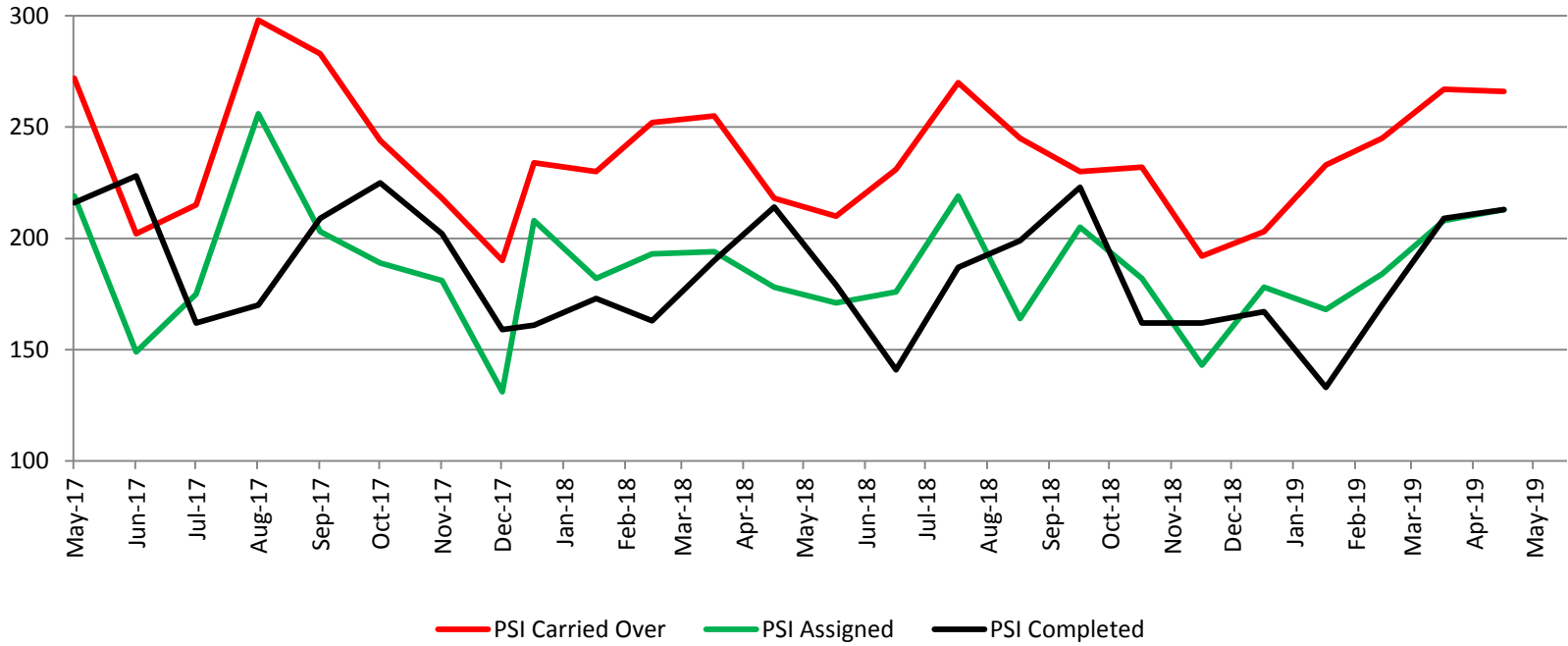
## Probation - Active Caseloads May 2017 - present



May	2017	2018	2019	2017 YTD Avg.	2018 YTD Avg.	2019 YTD Avg.
Dist. Court Probation	2,267	2,117	1,911	2,250	2,145	1,949
Muni. Court Probation	1,286	1,239	1,265	1,281	1,242	1,235



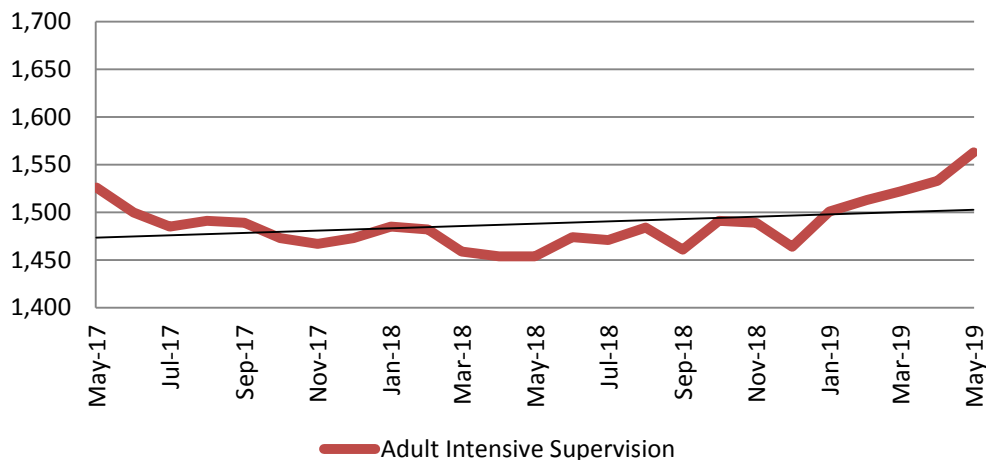
## District Court Probation: Pre-Sentence Investigation May 2017 - present



<b>May</b>	<b>2017</b>	<b>2018</b>	<b>2019</b>
Carried Over	272	218	266
Assigned	219	178	213
Completed	216	214	213

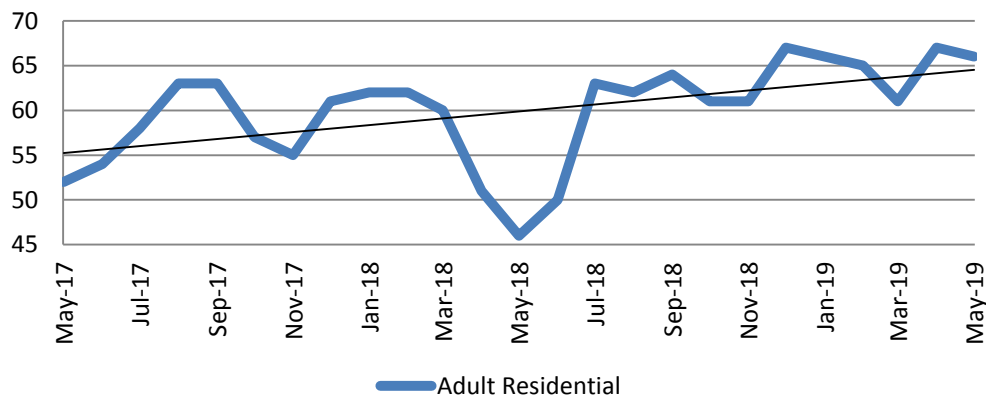
# Community Corrections

**Adult Intensive Supervision Probation (AISP):  
ADP May 2017- present**



Year	May	May YTD Avg.
2017	1,526	1,586
2018	1,454	1,467
2019	1,563	1,526

**Adult Residential: ADP  
May 2017 - present**

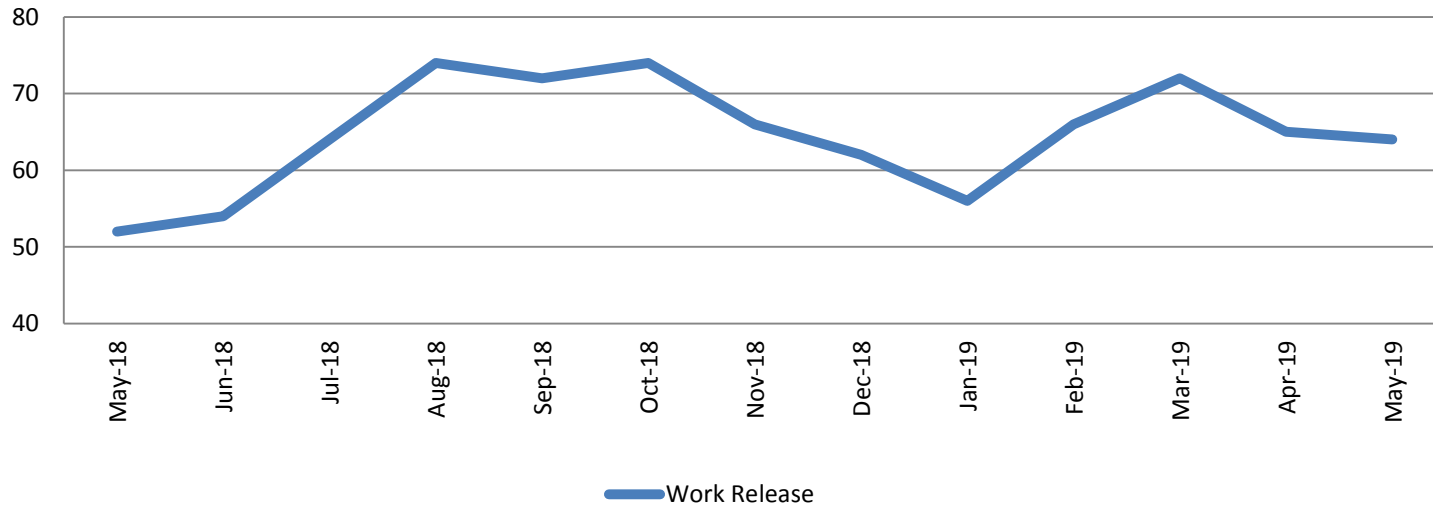


Year	May	May YTD Avg.
2017	52	60
2018	46	56
2019	66	65



# Community Corrections

## Work Release: ADP May 2018 - present

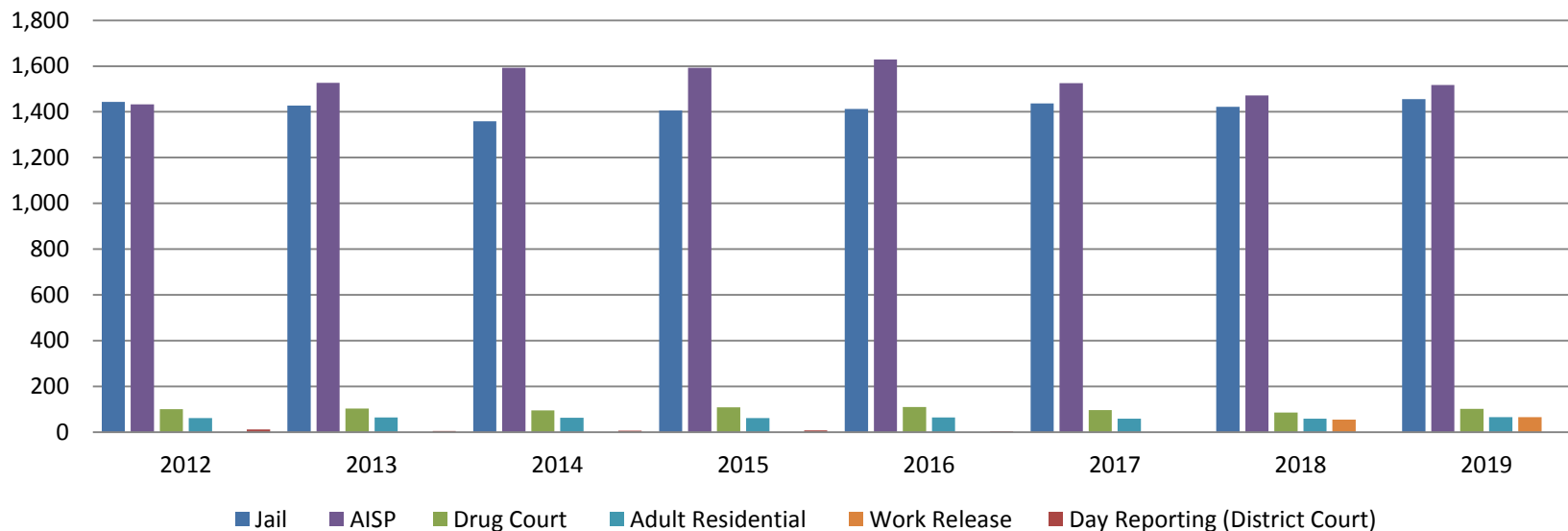


Month Year	Total	YTD Avg.
May 2018	52	38
May 2019	64	65



# Correlation: Total & Sedgwick County Programs (Adult)

## Total Annual ADP 2012-Present

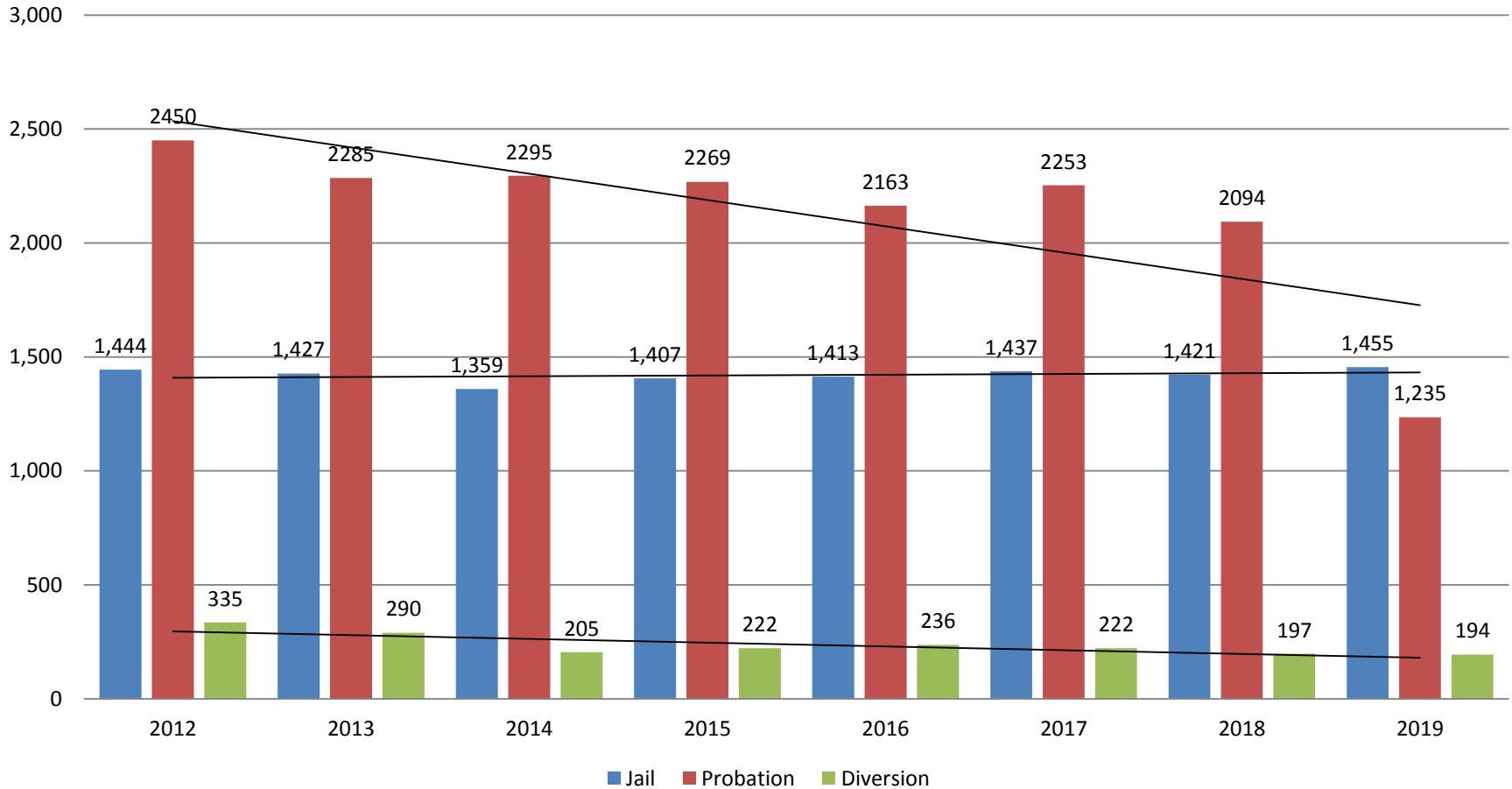


	2017	2018	2019
Jail	1,437	1,421	1,455
AISP	1,526	1,472	1,517
Drug Court	96	85	101
Adult Residential	59	59	65
Work Release	0	55	65
Day Reporting (DC)	0	0	0



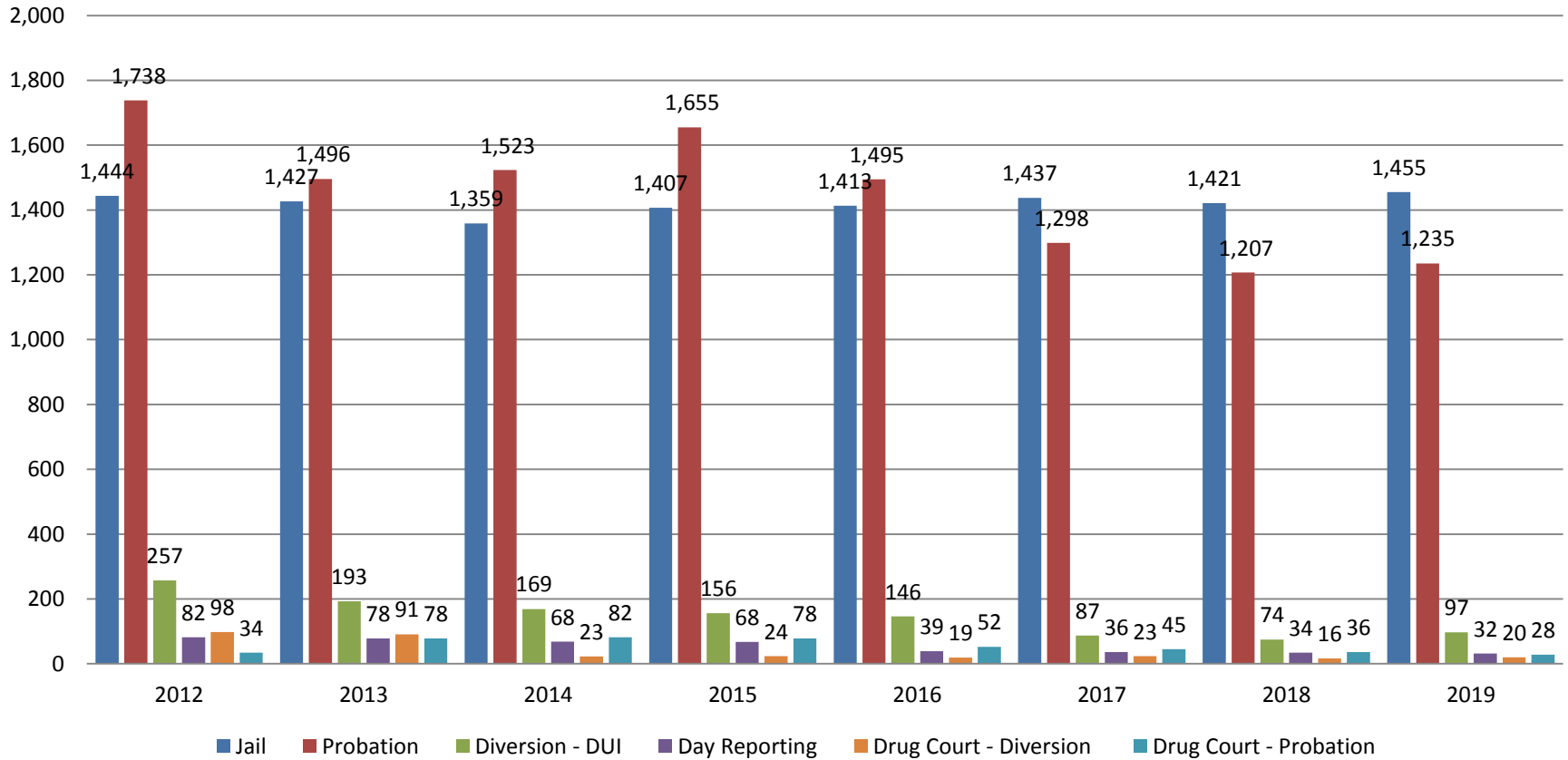
# Correlation: Total & District Court Programs

## Total Annual ADP: 2012 - Present



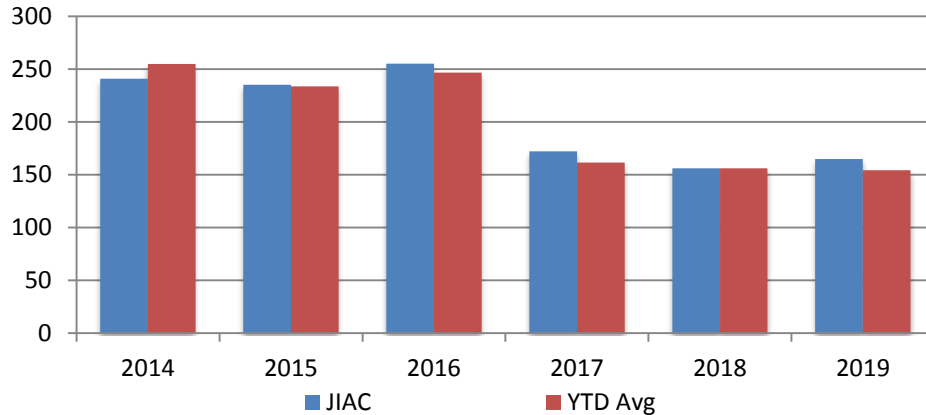
# Correlation: Total & City of Wichita / Municipal Court Programs

## Total Annual ADP: 2012 - present



# Juvenile

**JIAC Intakes**  
May 2014 - present

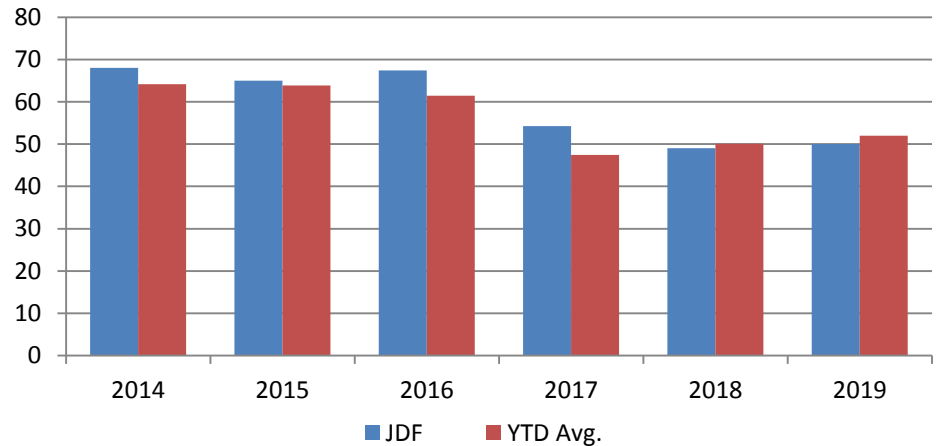


Year	May	May YTD Avg.
2014	241	255
2015	235	234
2016	255	247
2017	172	161
2018	156	156
2019	165	154

**Year**      **May**      **May YTD Avg.**

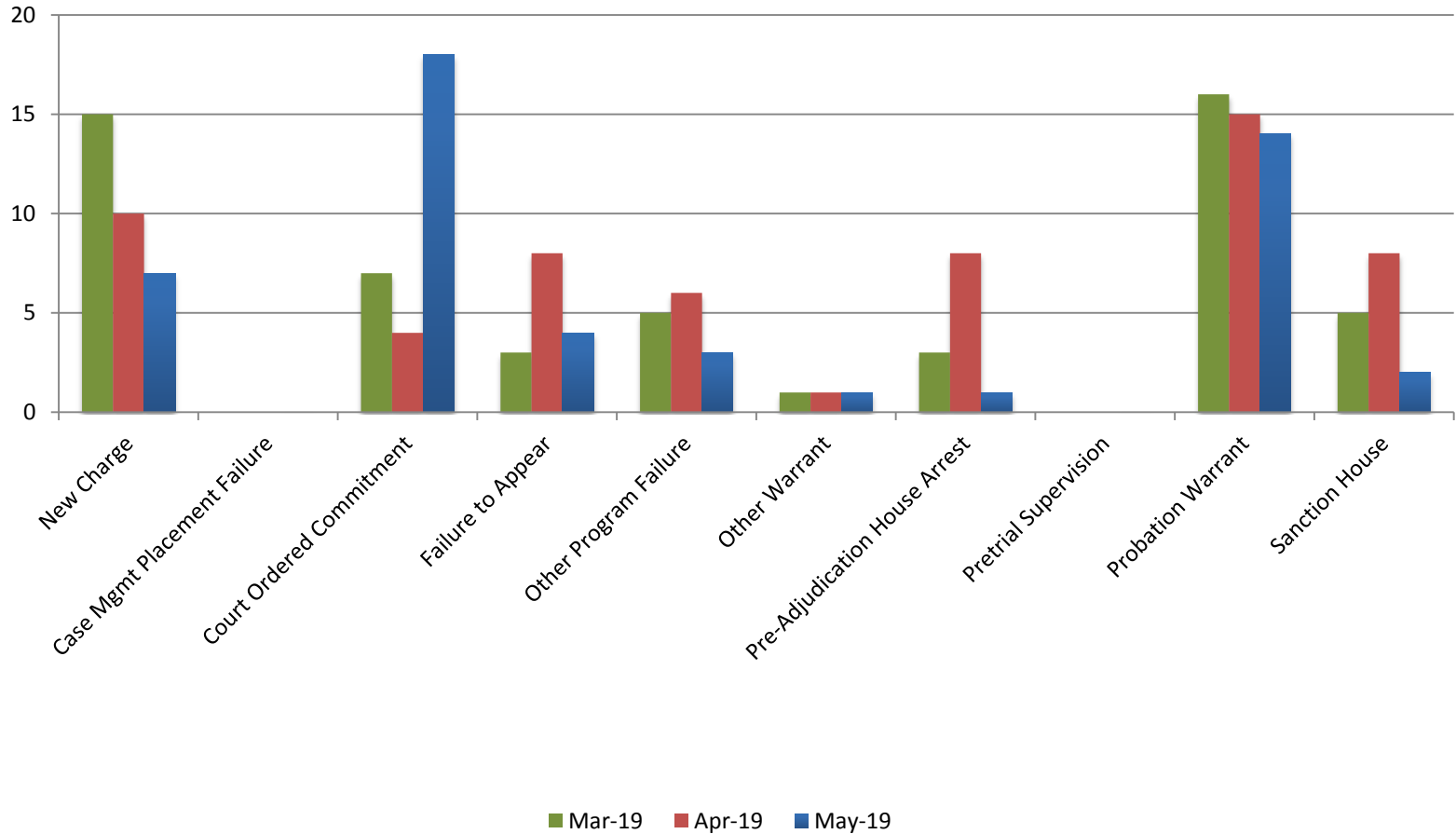
2014	68	64
2015	65	64
2016	67	61
2017	54	47
2018	49	50
2019	50	52

**JDF ADP**  
May 2014 - present





# Reason for JDF Admits



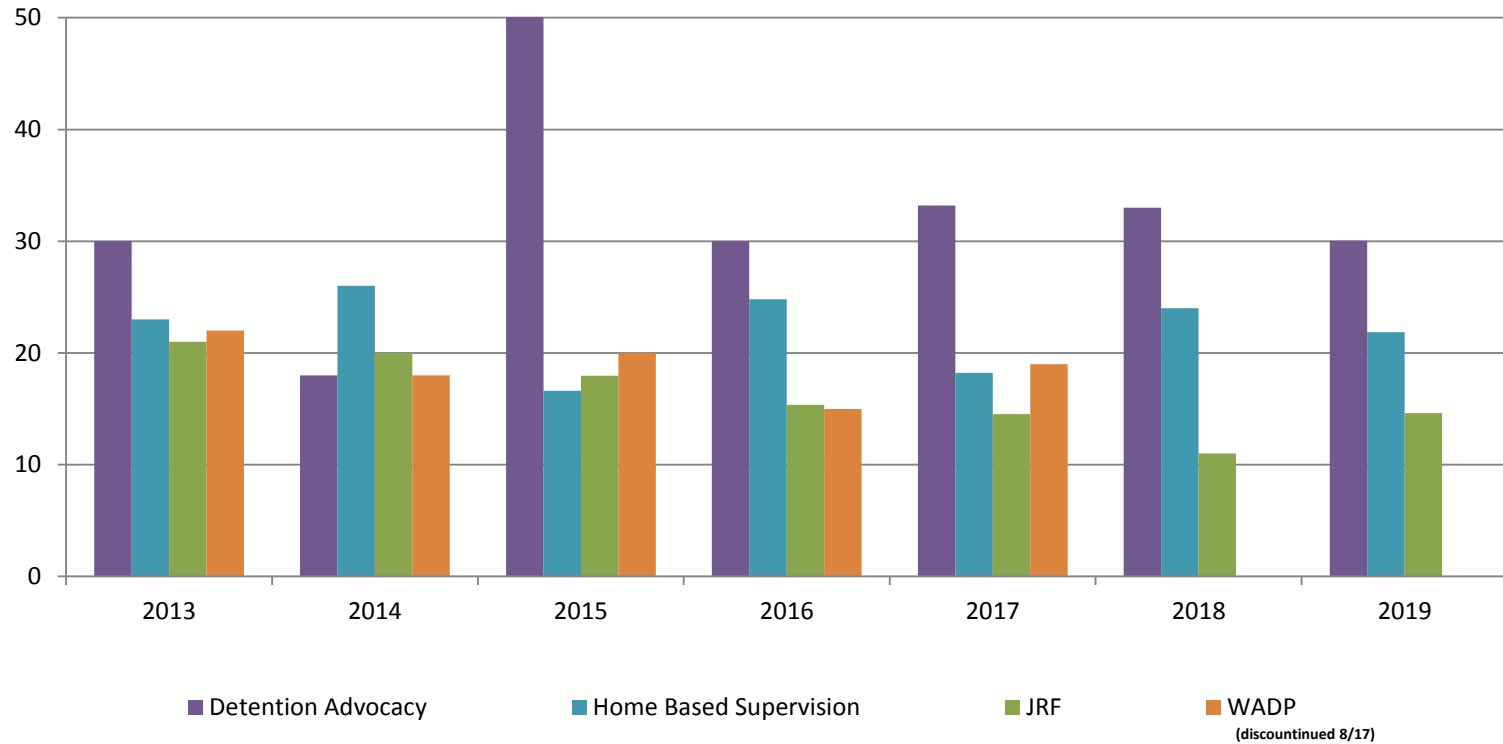
## Reason for JDF Admits

Reason	May 2018	May 2019
New Charges	12	7
Case Management Placement Failures	1	0
Court Ordered Commitment	16	18
Failure to Appear	3	4
Other Program Failure	2	3
Other Warrant	1	1
Pre-Adjudication House Arrest	1	1
Pretrial Supervision	1	0
Probation Warrant	10	14
Sanction House	2	2



# Juvenile Detention Alternatives

## ADP: May 2013- Present



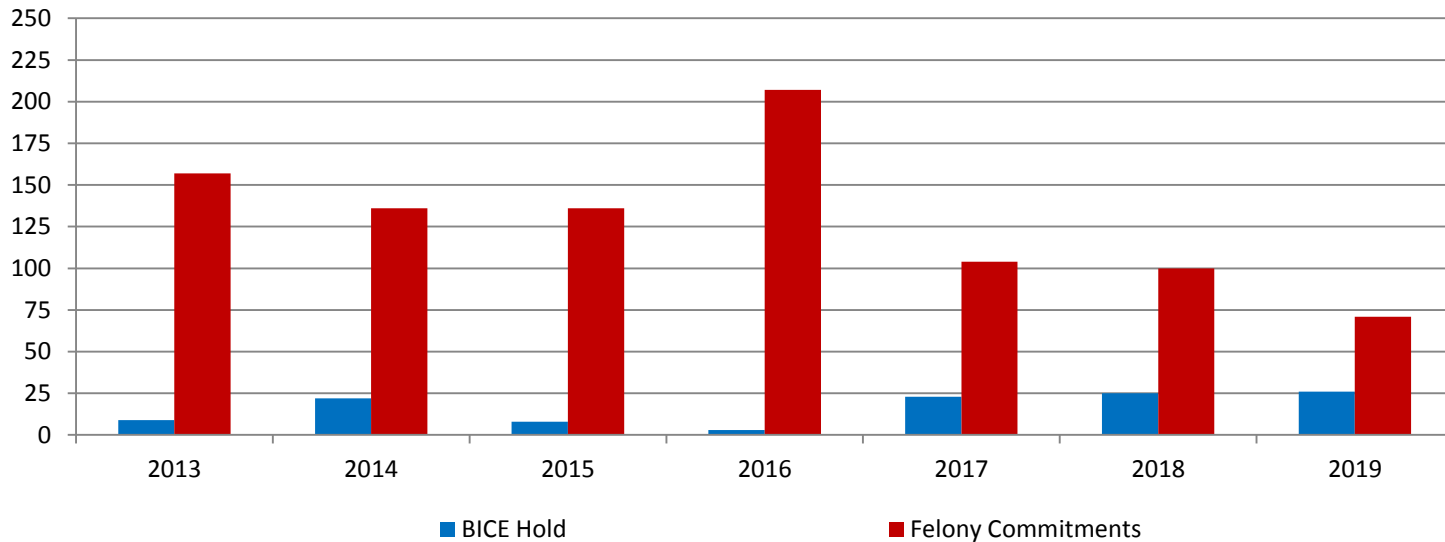
# Juvenile Detention Services

<b>May ADP</b>	<b>2016</b>	<b>2017</b>	<b>2018</b>	<b>2019</b>
Juvenile Detention Facility	67	54	53	50
Juvenile Residential Facility	15	15	11	15
Home Based Supervision	25	18	24	22
Detention Advocacy Case Management Services	30	33	33	30
Weekend Alternative Detention Program (total)	14	21	0	N/A

<b>May YTD AVERAGE</b>	<b>2016</b>	<b>2017</b>	<b>2018</b>	<b>2019</b>
Juvenile Detention Facility	61	47	50	52
Juvenile Residential Facility	16	14	12	14
Home Based Supervision	26	23	27	27
Detention Advocacy Case Management Services	35	35	32	29
Weekend Alternative Detention Program	16	18	0	N/A

# Monthly Jail Snapshot: May 31, 2019

## Snapshots May 2013 - Present



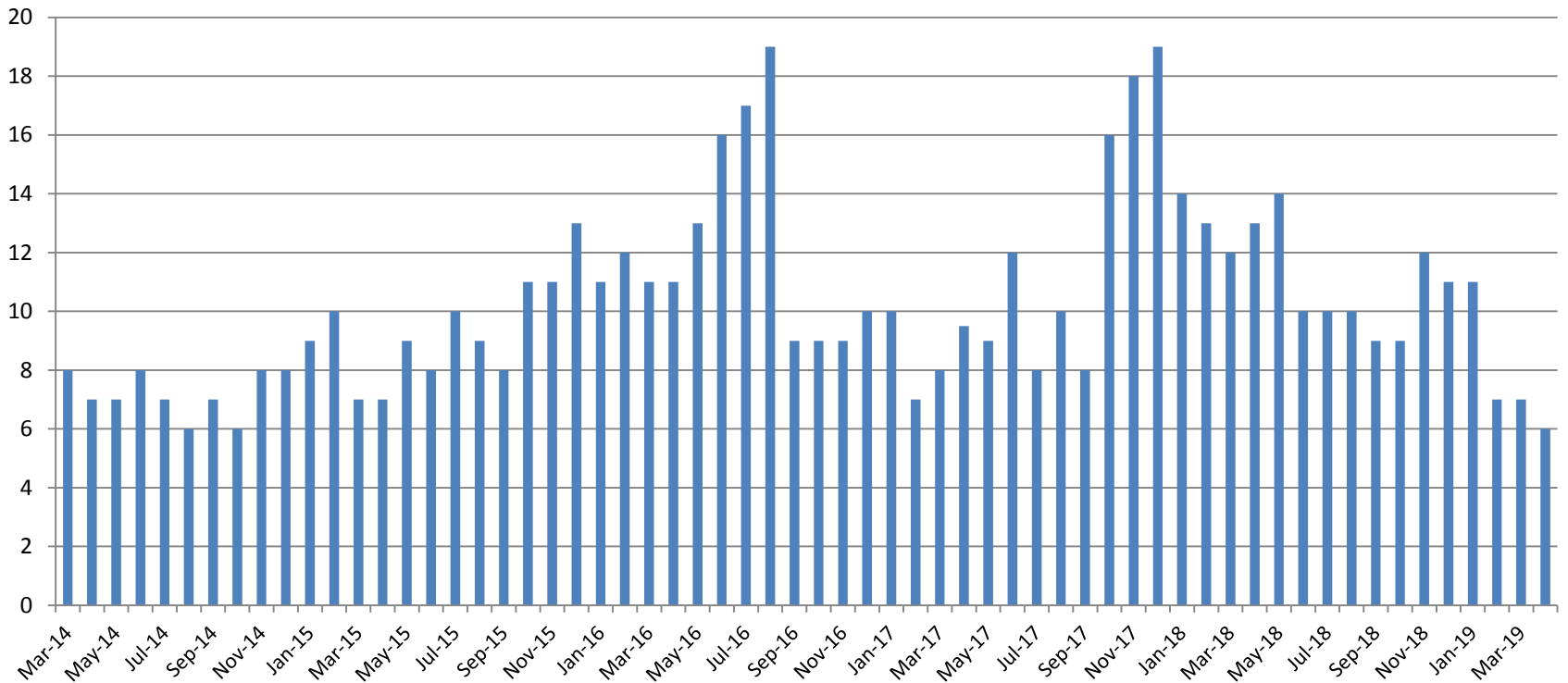
<b>BICE Hold</b>	<b>2013</b>	<b>2014</b>	<b>2015</b>	<b>2016</b>	<b>2017</b>	<b>2018</b>	<b>2019</b>
<b>May</b>	9	22	8	3	23	25	26

<b>Felony Commitments</b>	<b>2013</b>	<b>2014</b>	<b>2015</b>	<b>2016</b>	<b>2017</b>	<b>2018</b>	<b>2019</b>
<b>May</b>	157	136	136	207	104	100	71



## Journal Entry Completion (Average Days) March 2014-Present



April	2014	2015	2016	2017	2018	2019
Avg. Days	7	7	11	9.5	13	6
YTD Avg.	8	8	11	9	13	7.75

