

Criminal Justice Coordinating Council

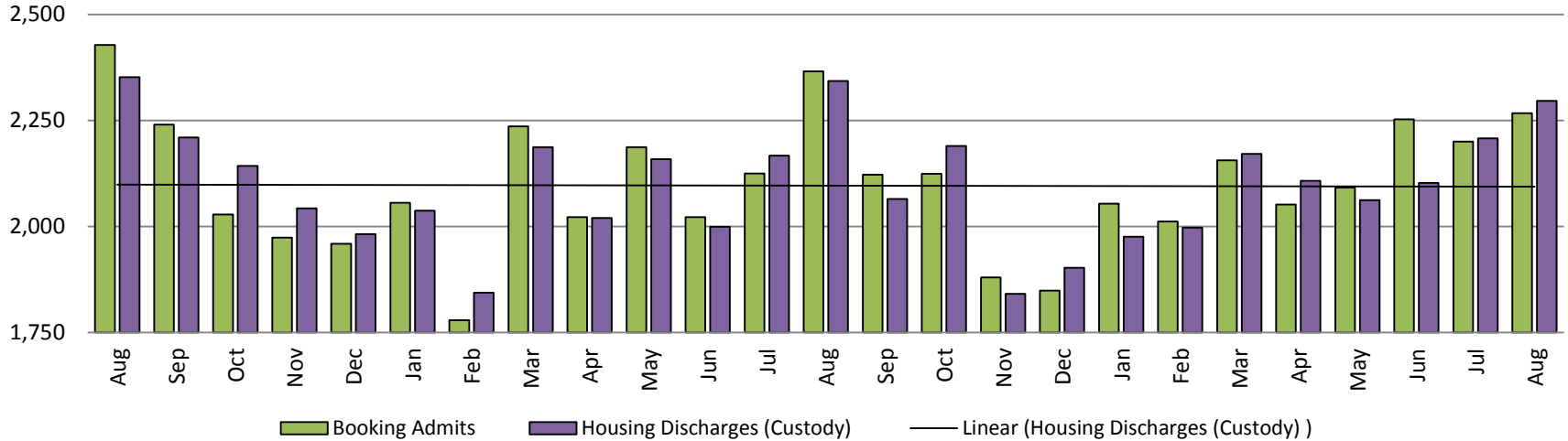
Population Report & Program Trends

September 2019

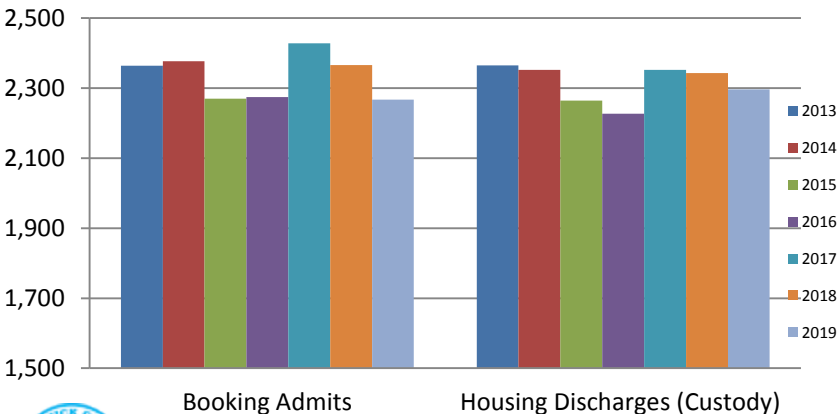


Detention Facility

Booking Admits & Housing Discharges from Custody August 2017-Present

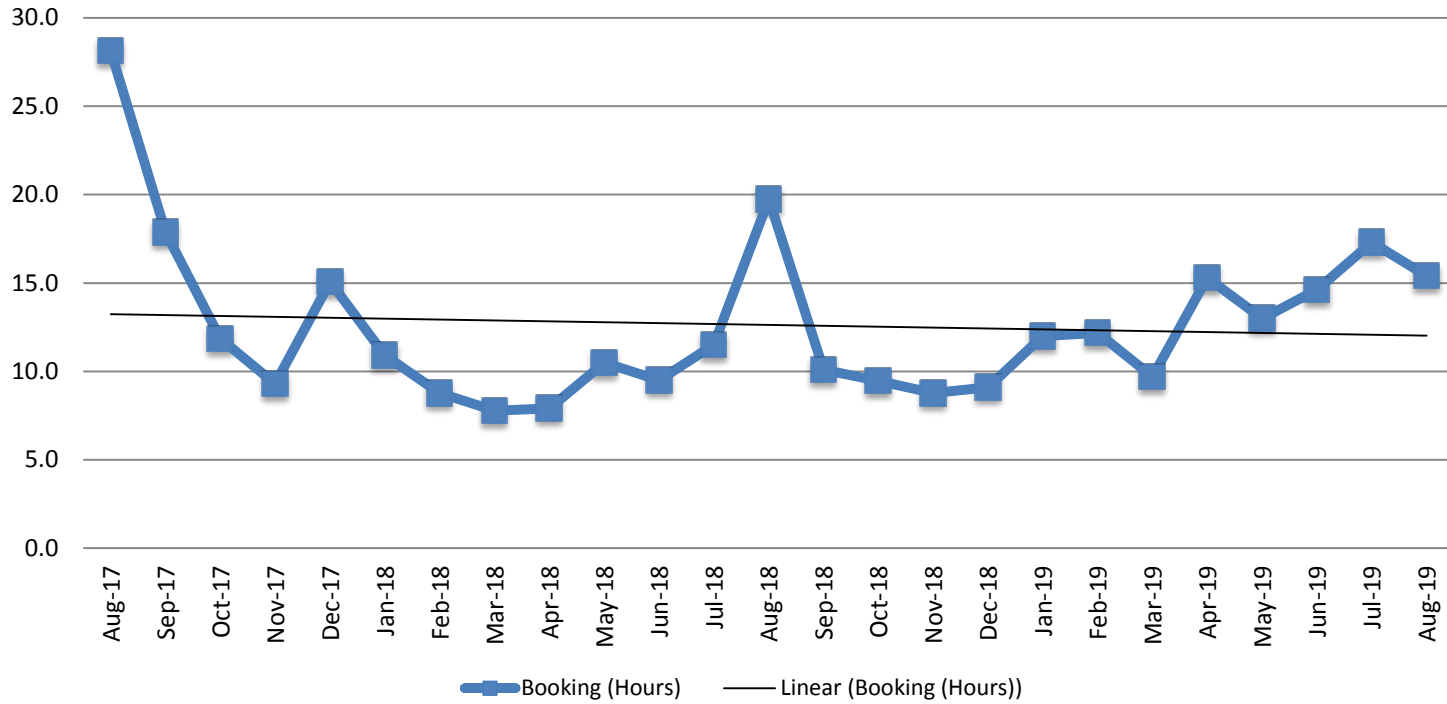


Bookings Year over Year: Month of August



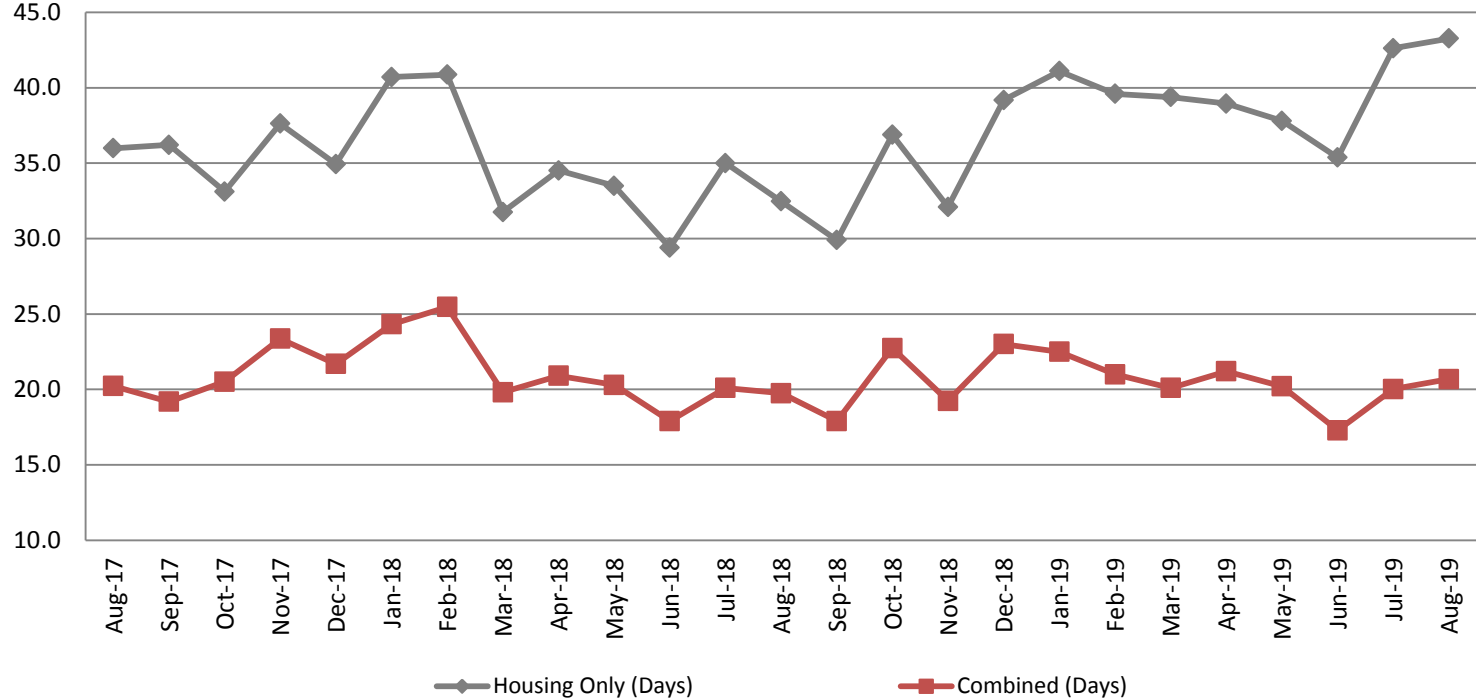
Bookings August	Housing Discharges August
2017: 2,428	2017: 2,352
2018: 2,366	2018: 2,343
2019: 2,267	2019: 2,296

Average Length of Stay: Booking (Hours) August 2017 - Present



August	August YTD Average
2017: 28.1	2017: 17.8
2018: 19.8	2018: 10.8
2019: 15.4	2019: 13.7

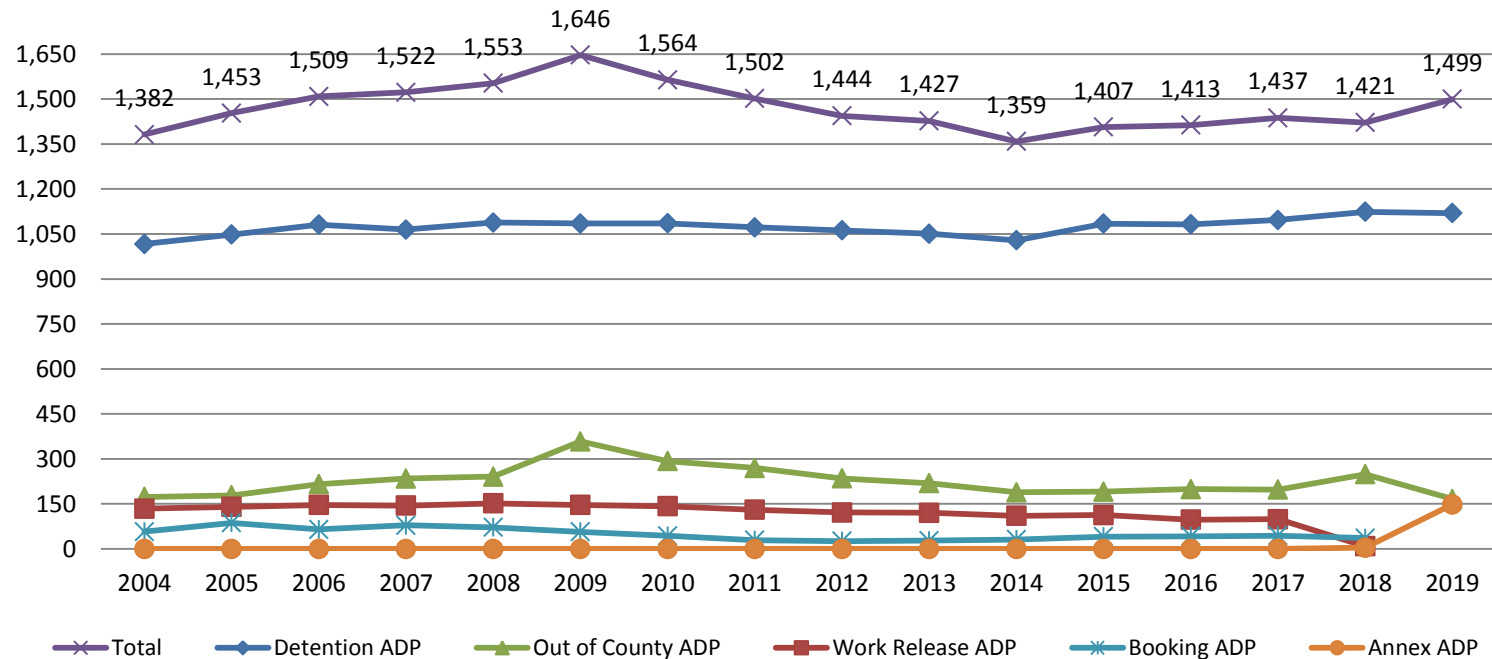
Average Length of Stay: Housing & Combined (Days) August 2017 - Present



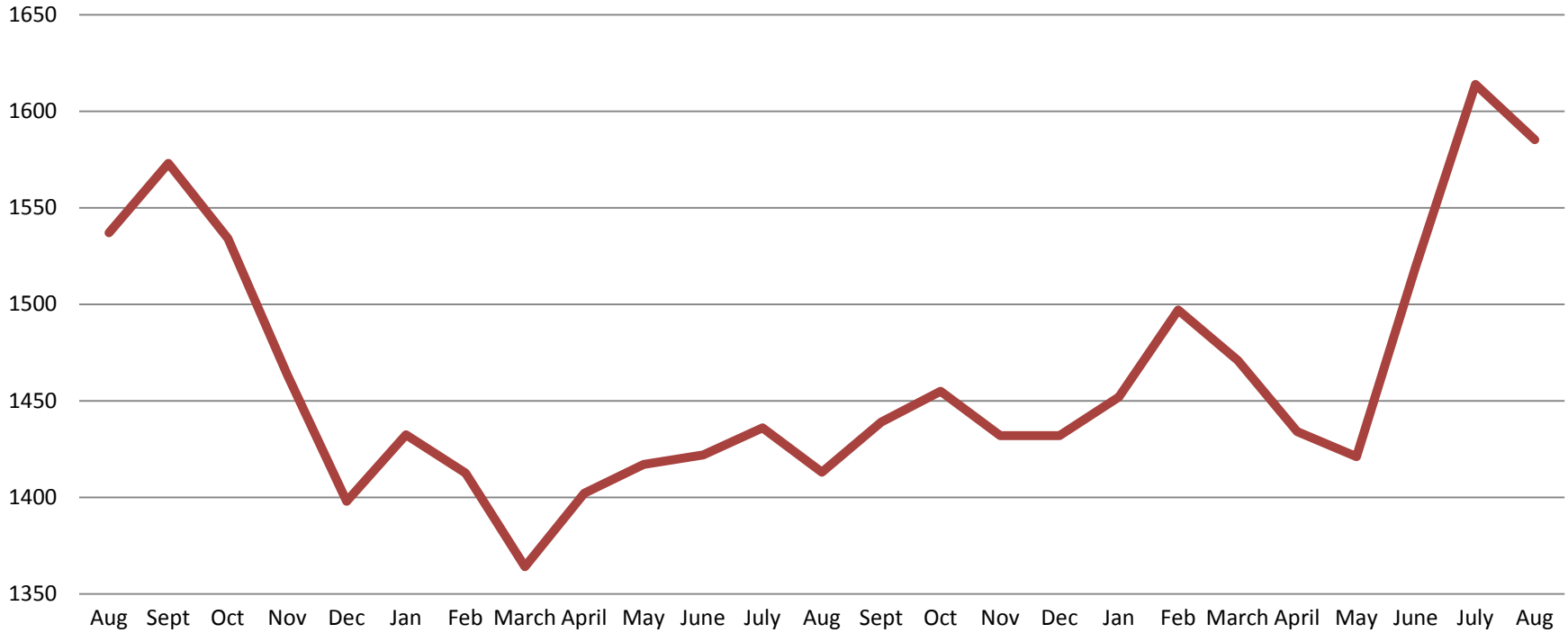
Month Year	Housing Only	Housing YTD AVG	Combined Days	Combined YTD AVG
August 2017	36.0	35.0	20.2	20.2
August 2018	32.5	34.8	19.8	21.1
August 2019	43.3	39.8	20.7	20.4

Jail: Annual Average Daily Population (ADP)

TRENDS: Booking, Detention, Work Release, & Out of County
Annual ADP: 2004 - present

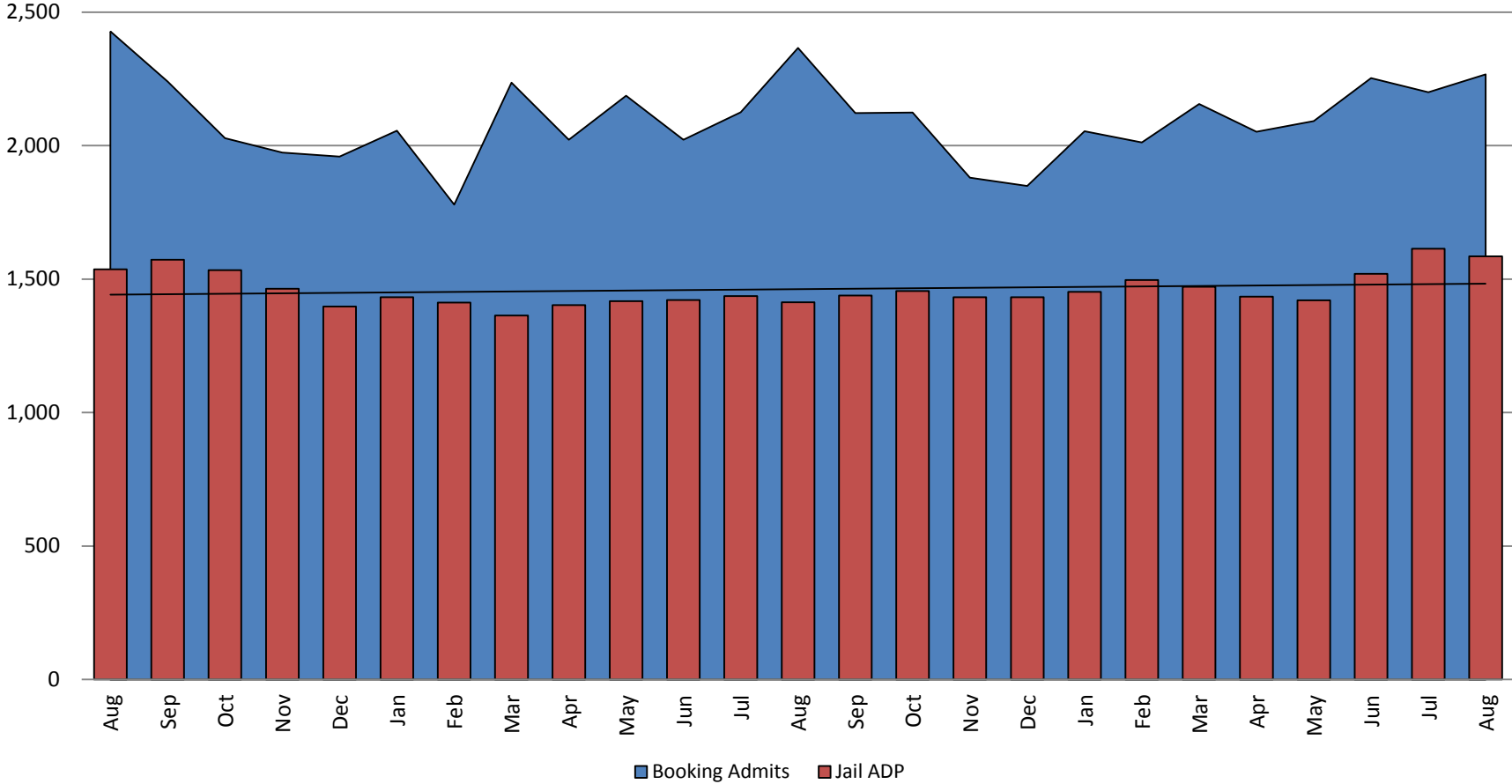


TOTAL MONTHLY ADP: JAIL (Booking, Detention Facility, Annex, & Out of County) August 2017 - present

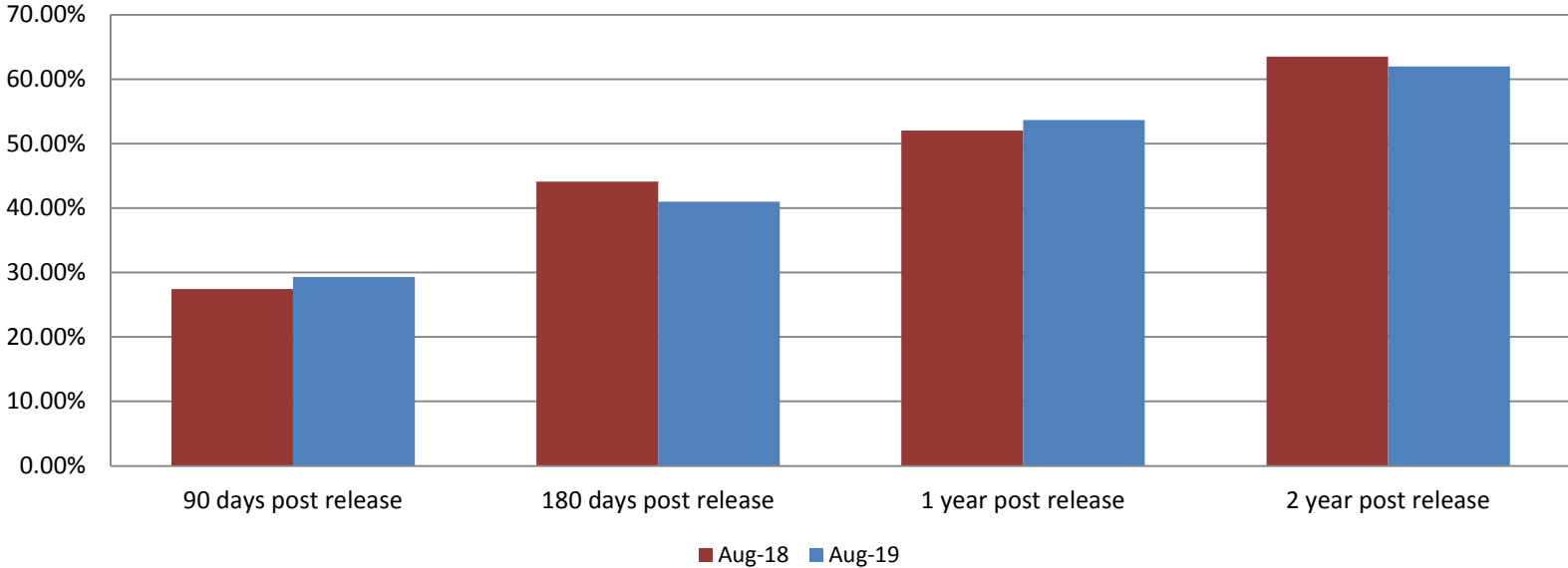


August 2017	August 2018	August 2019
1,537	1,413	1,585

Booking Admits & Total Monthly ADP (Jail): August 2017 - present



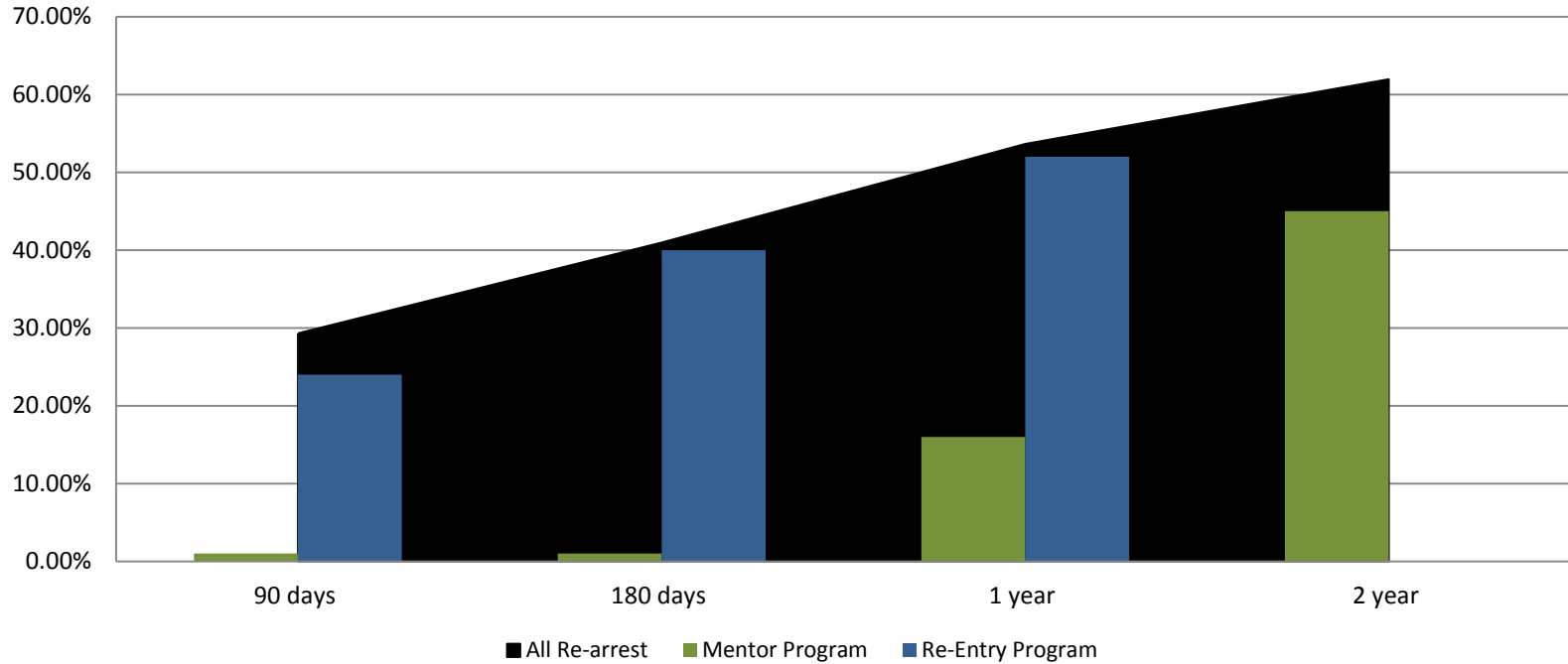
Percent of released inmates rearrested August



Month Year	90 Days	180 Days	1 Year	2 Years
August 2018	27.44%	44.09%	52.03%	63.51%
August 2019	29.30%	40.97%	53.65%	61.97%



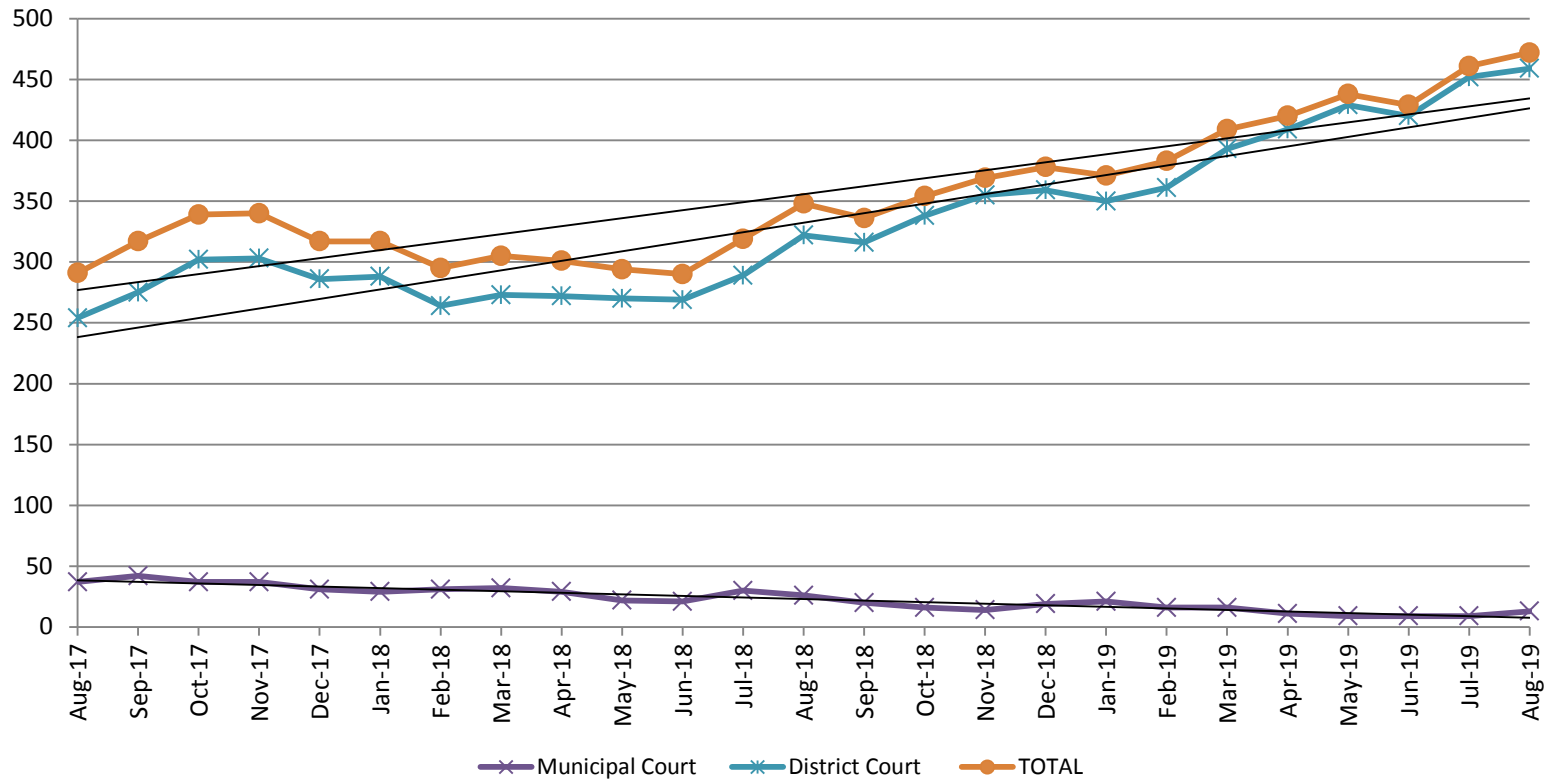
Recidivism by Programs August 2019



August 2019	90 Days	180 Days	1 year	2 years
All Re-arrests	31.42%	41.97%	55.40%	64.01%
Mentor Program	1%	1%	16%	45%
Re-Entry Program	24%	40%	52%	N/A



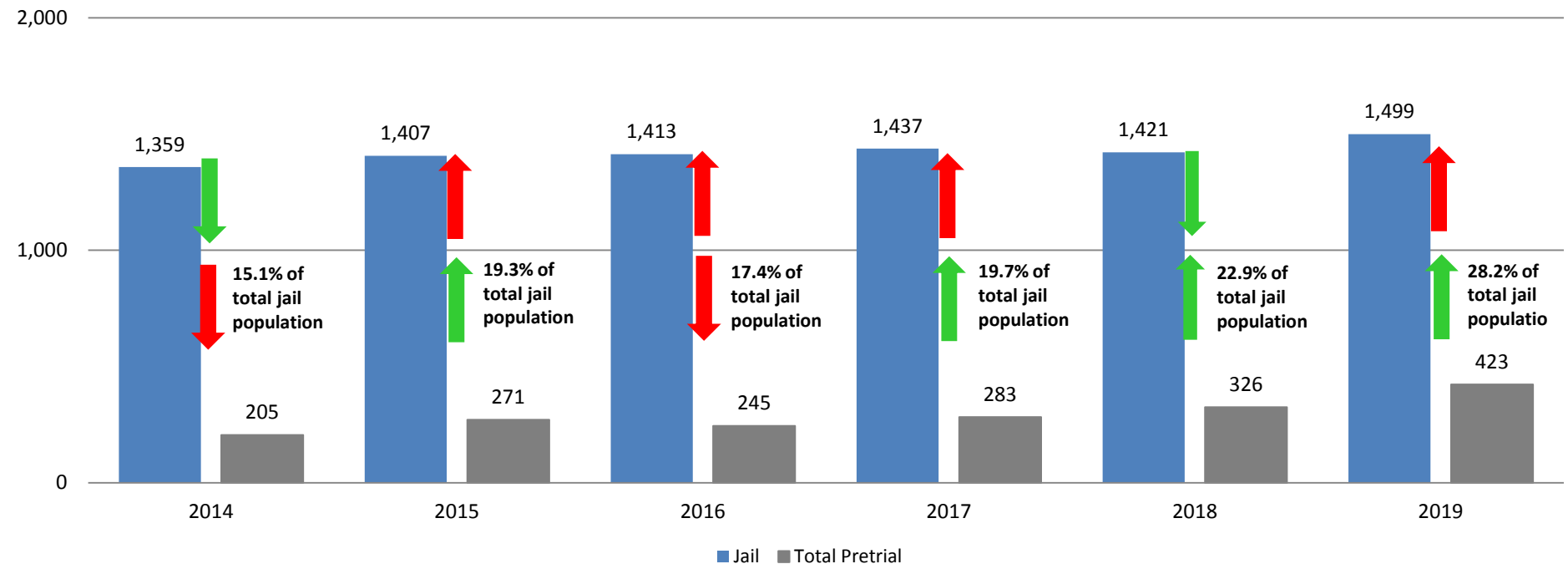
Pretrial Services Program (PSP) Monthly ADP: August 2017 - Present



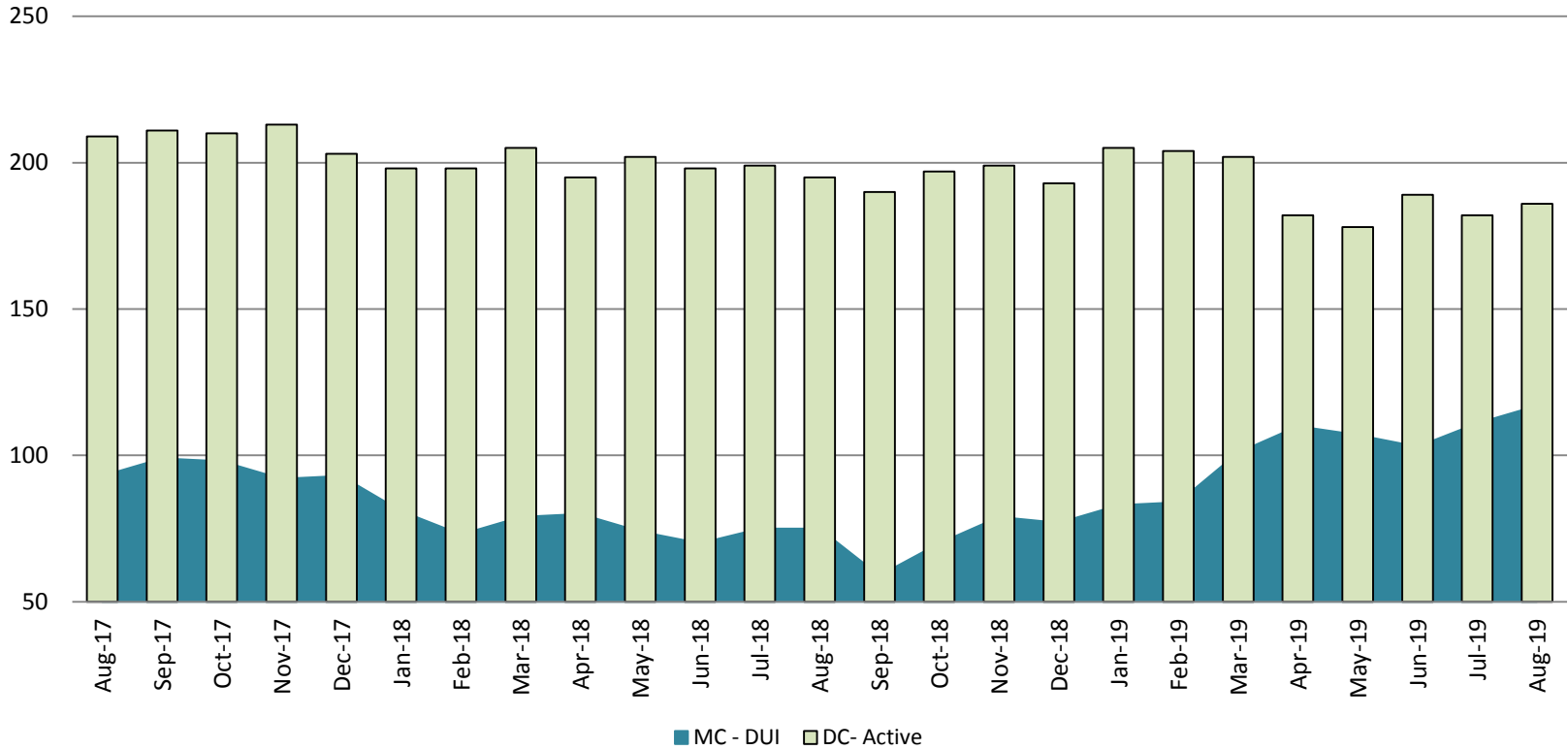
August	2017 ADP	2018 ADP	2019 ADP	2017 YTD Avg.	2018 YTD Avg.	2019 YTD Avg.
Muni. Court	37	26	13	35	28	13
Dist. Court	254	322	459	225	281	409
Total	291	348	472	260	309	423

Correlation: Total & PSP

Total Annual ADP: 2014 - Present

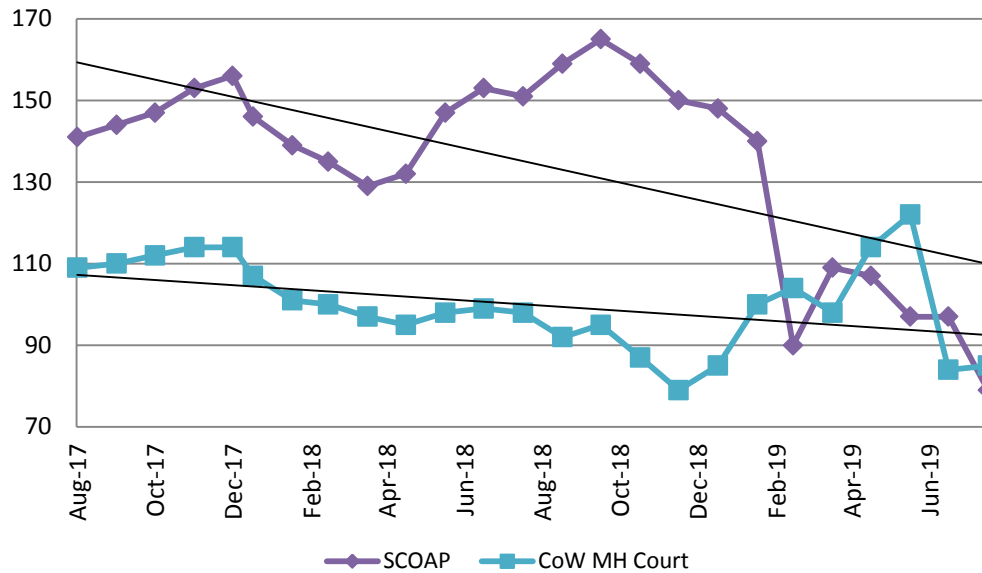


Diversion - Active Caseload August 2017- Present

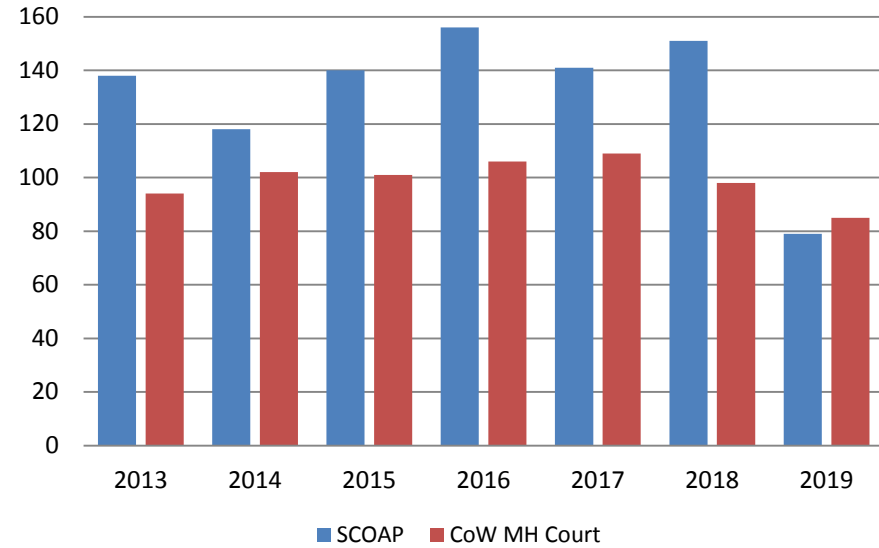


August	2017	2018	2019	2017 YTD Avg.	2018 YTD Avg.	2019 YTD Avg.
Muni. Court- DUI	93	75	117	83	76	102
Dist. Court- Active	209	195	186	228	199	191

Mental Health - ADP August 2017 - present

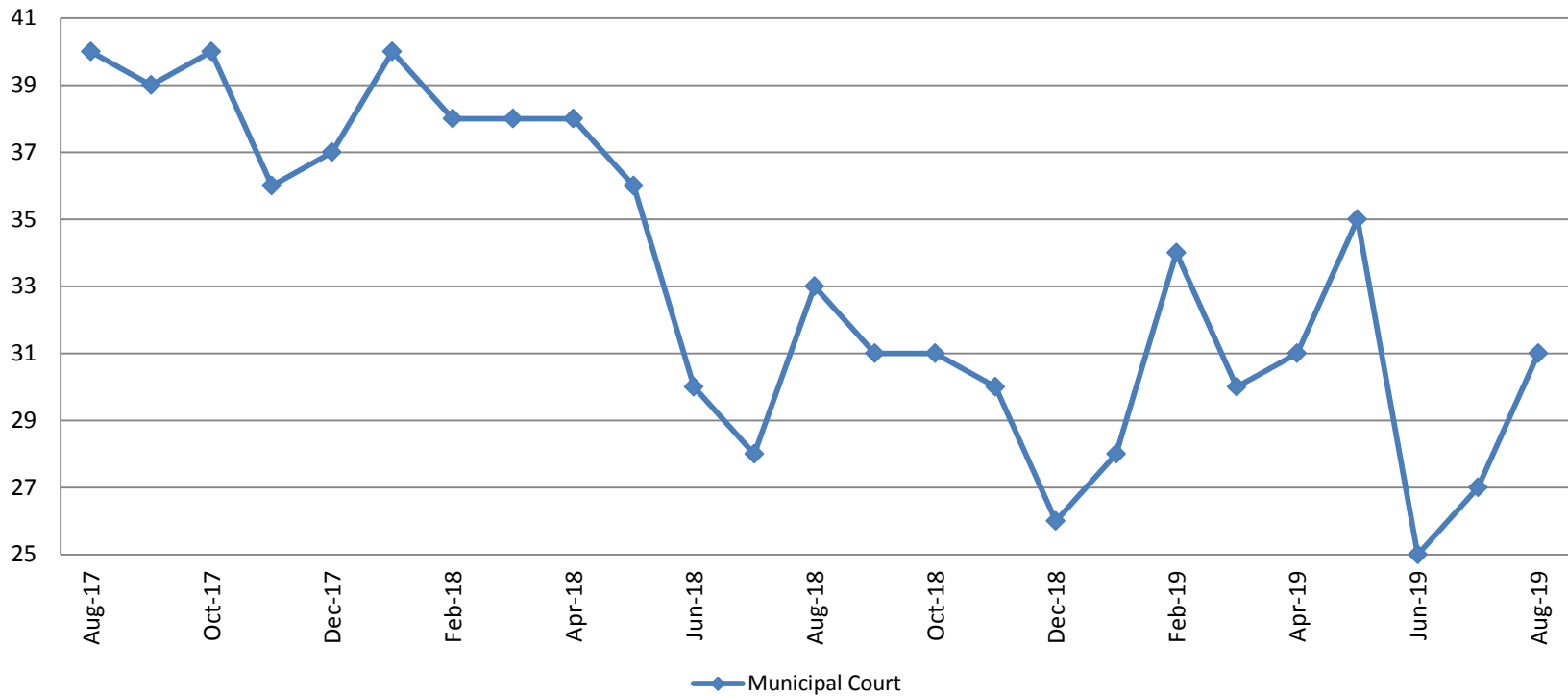


Mental Health ADP Year over Year- August



August	2017 ADP	2018 ADP	2019 ADP	2017 YTD Avg.	2018 YTD Avg.	2019 YTD Avg.
SCOAP	141	151	79	149	142	108
MH Court	109	98	85	118	99	99

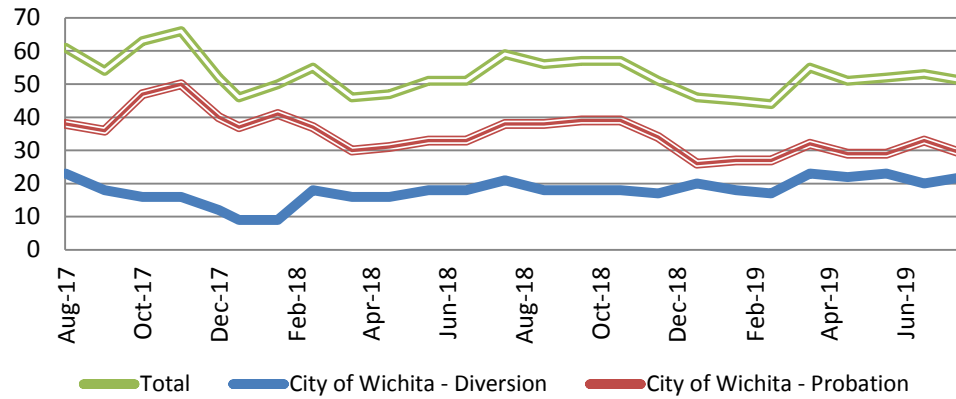
Day Reporting - Active Caseload August 2017 - Present



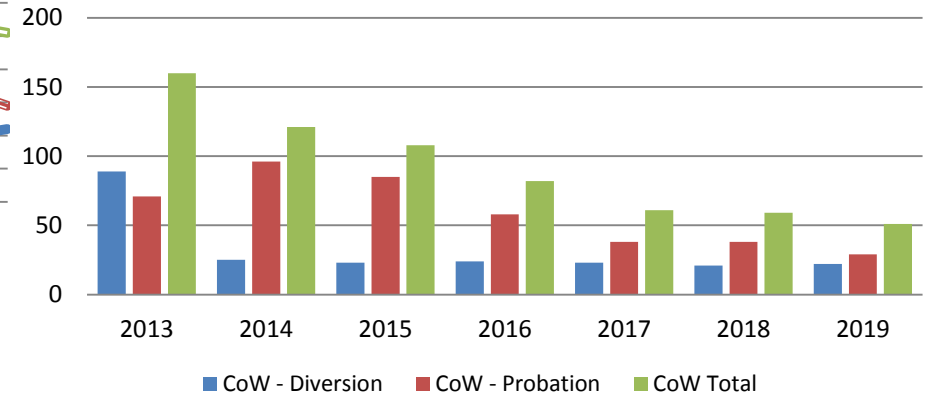
August	2014	2015	2016	2017	2018	2019
Muni. Court	59	64	31	40	33	31
Muni. Court YTD Avg.	73	71	44	35	35	30



Drug Court - City of Wichita ADP: August 2017 - present



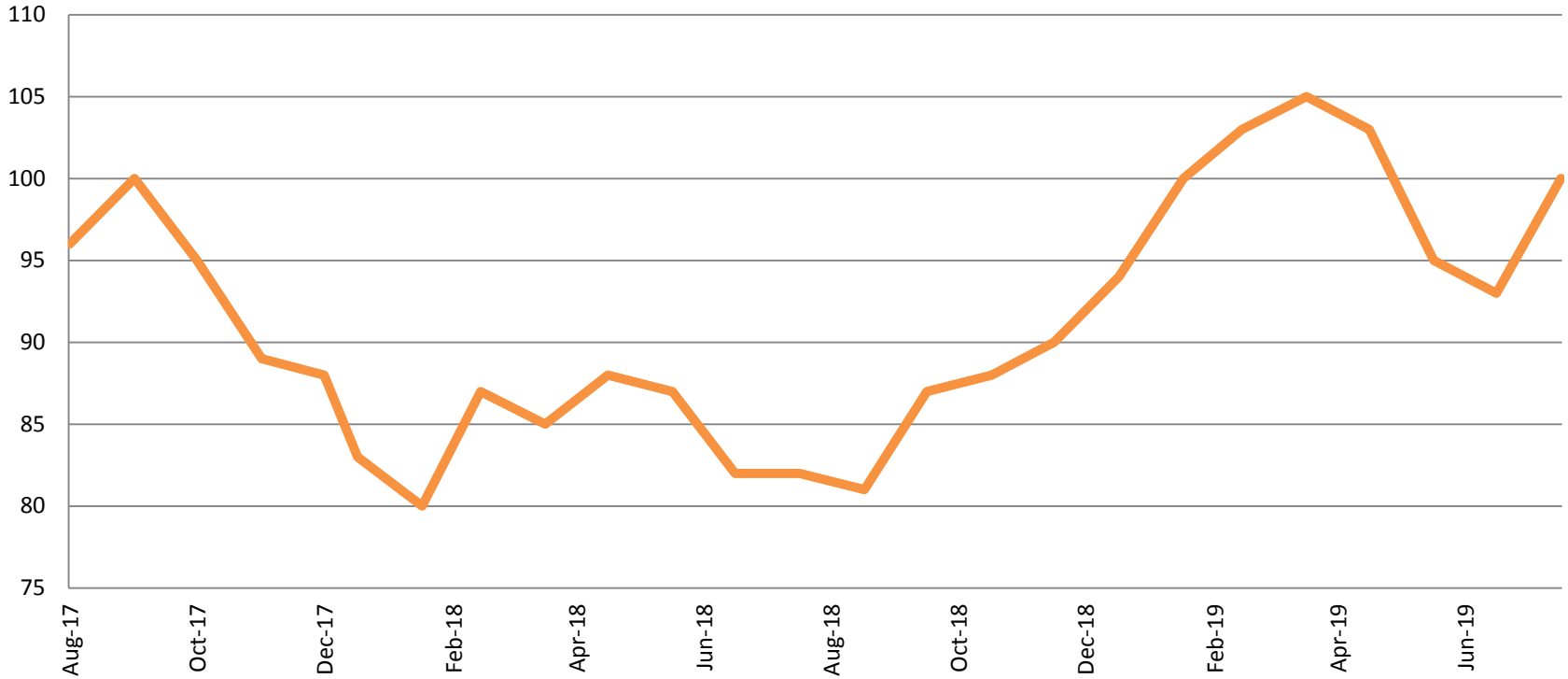
Drug Court- City of Wichita Year over Year - August



August	2017	2018	2019
Diversion	23	21	22
Probation	68	39	29
Total	61	59	51

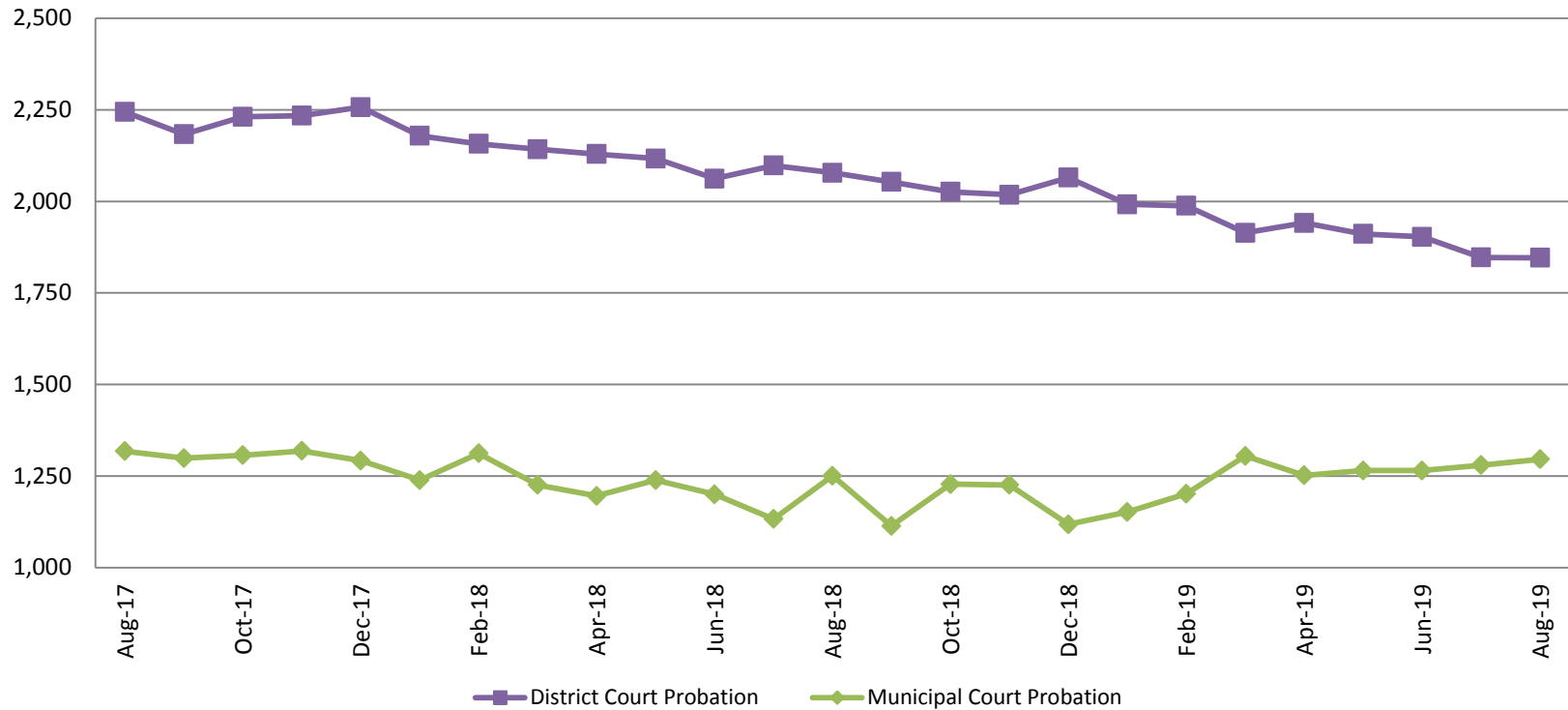


Drug Court - Sedgwick County ADP: August 2017 - present



August	2017	2018	2019
Sedg. Co. ADP	96	82	100
YTD Avg.	97	84	99

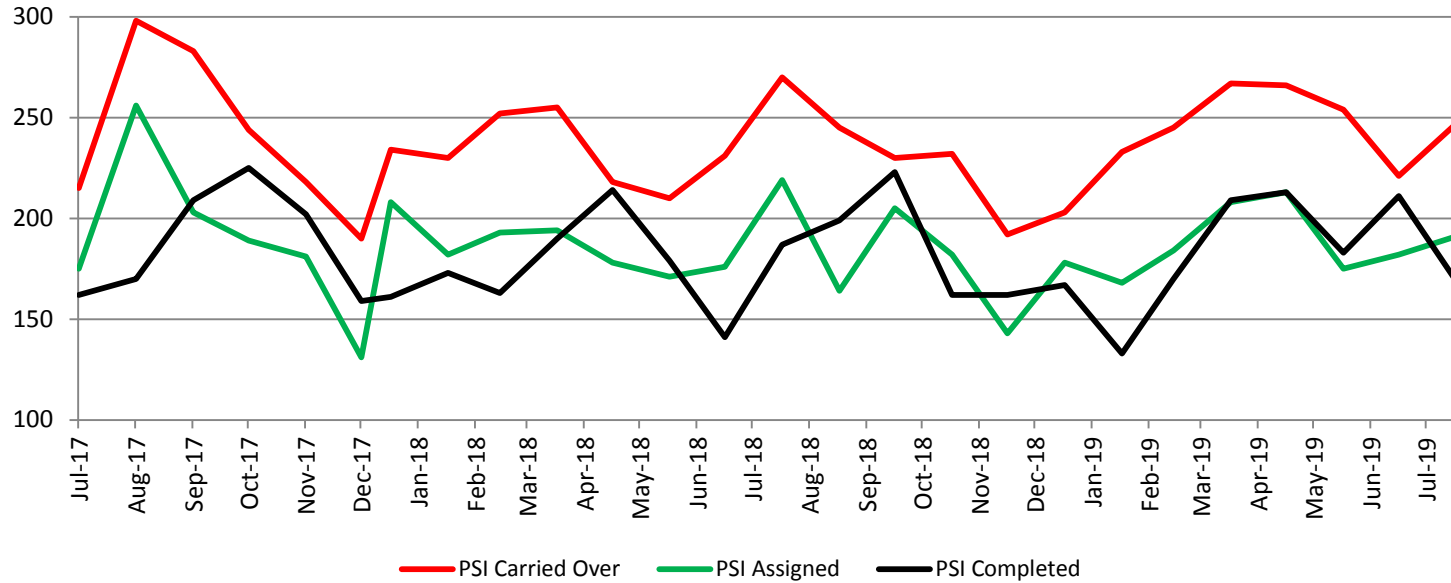
Probation - Active Caseloads August 2017 - present



August	2017	2018	2019	2017 YTD Avg.	2018 YTD Avg.	2019 YTD Avg.
Dist. Court Probation	2,244	2,078	1,846	2,266	2,120	1,918
Muni. Court Probation	1,318	1,251	1,296	1,295	1,225	1,252



District Court Probation: Pre-Sentence Investigation August 2017 - present

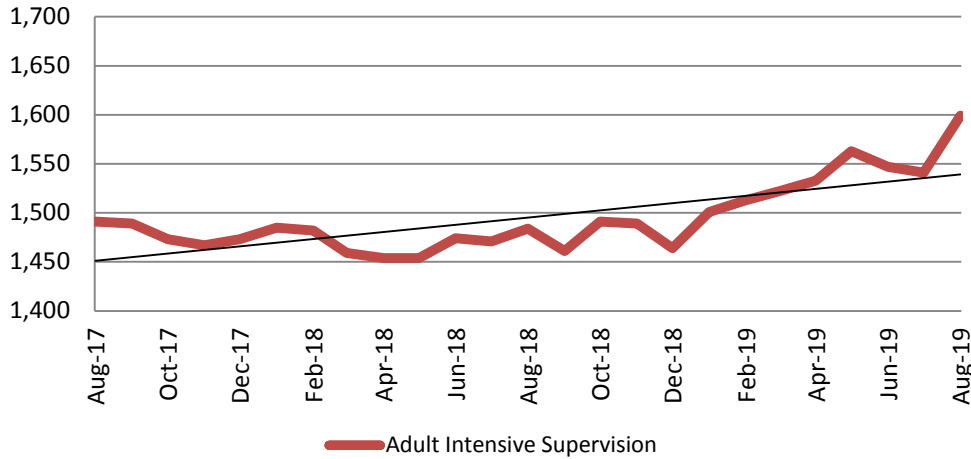


August	2017	2018	2019
Carried Over	298	270	247
Assigned	256	219	191
Completed	170	187	169



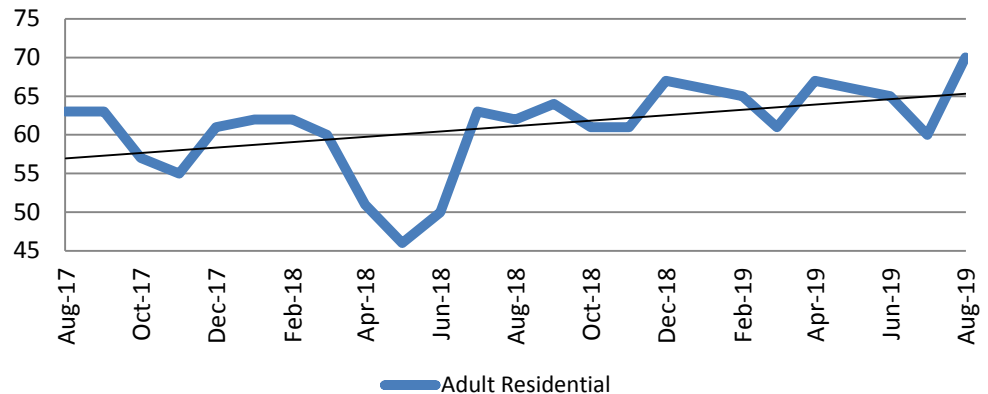
Community Corrections

**Adult Intensive Supervision Probation (AISP):
ADP August 2017- present**



Year	August	August YTD Avg.
2017	1,491	1,551
2018	1,484	1,470
2019	1,599	1,540

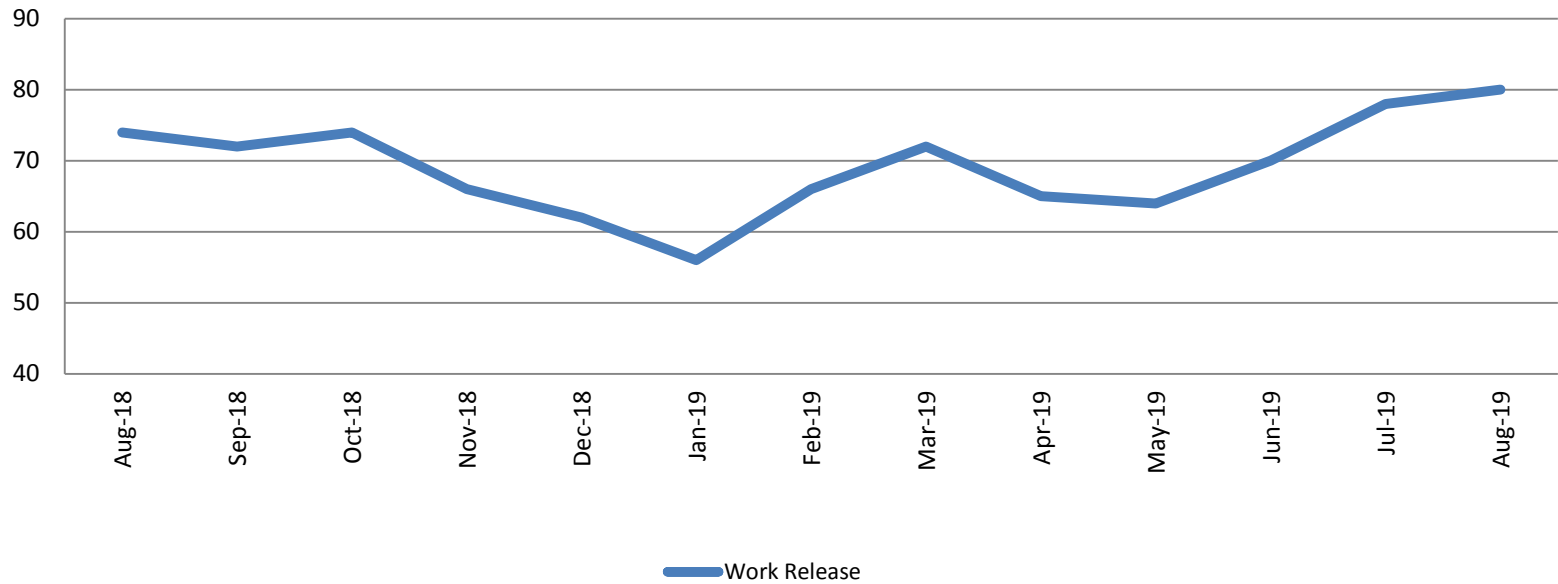
**Adult Residential: ADP
August 2017 - present**



Year	August	August YTD Avg.
2017	63	59
2018	62	57
2019	70	65

Community Corrections

Work Release: ADP August 2018 - present

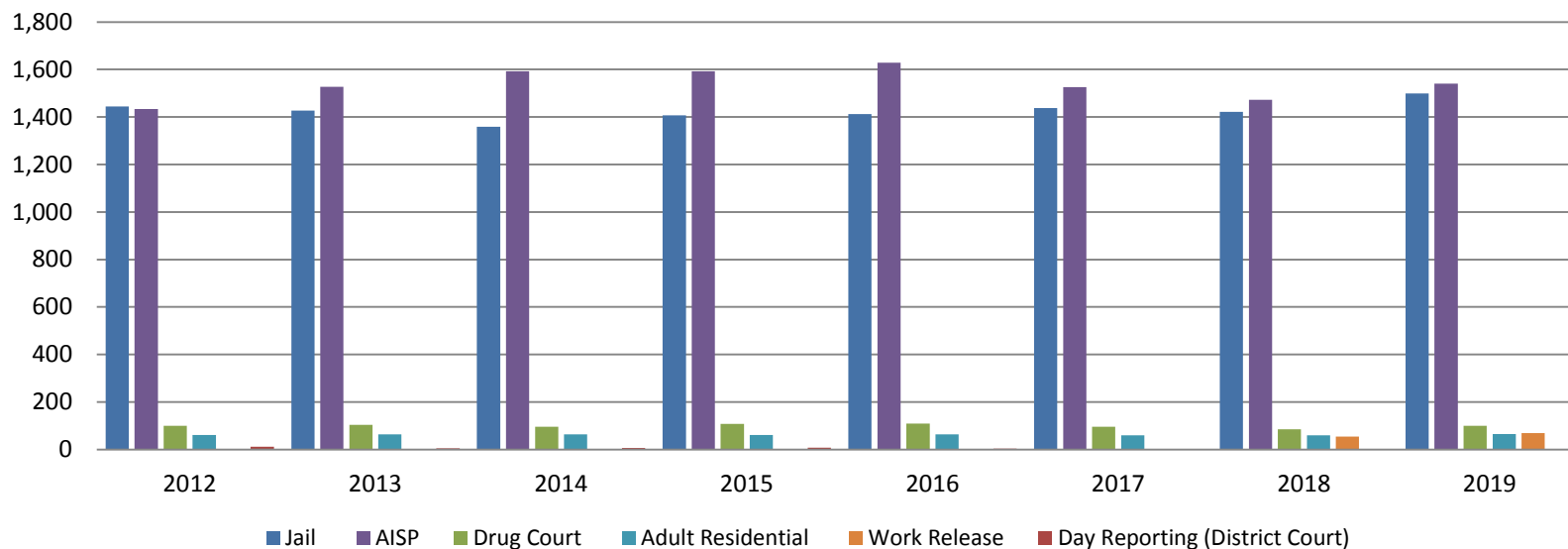


Month Year	Total	YTD Avg.
August 2018	74	48
August 2019	80	69



Correlation: Total & Sedgwick County Programs (Adult)

Total Annual ADP 2012-Present

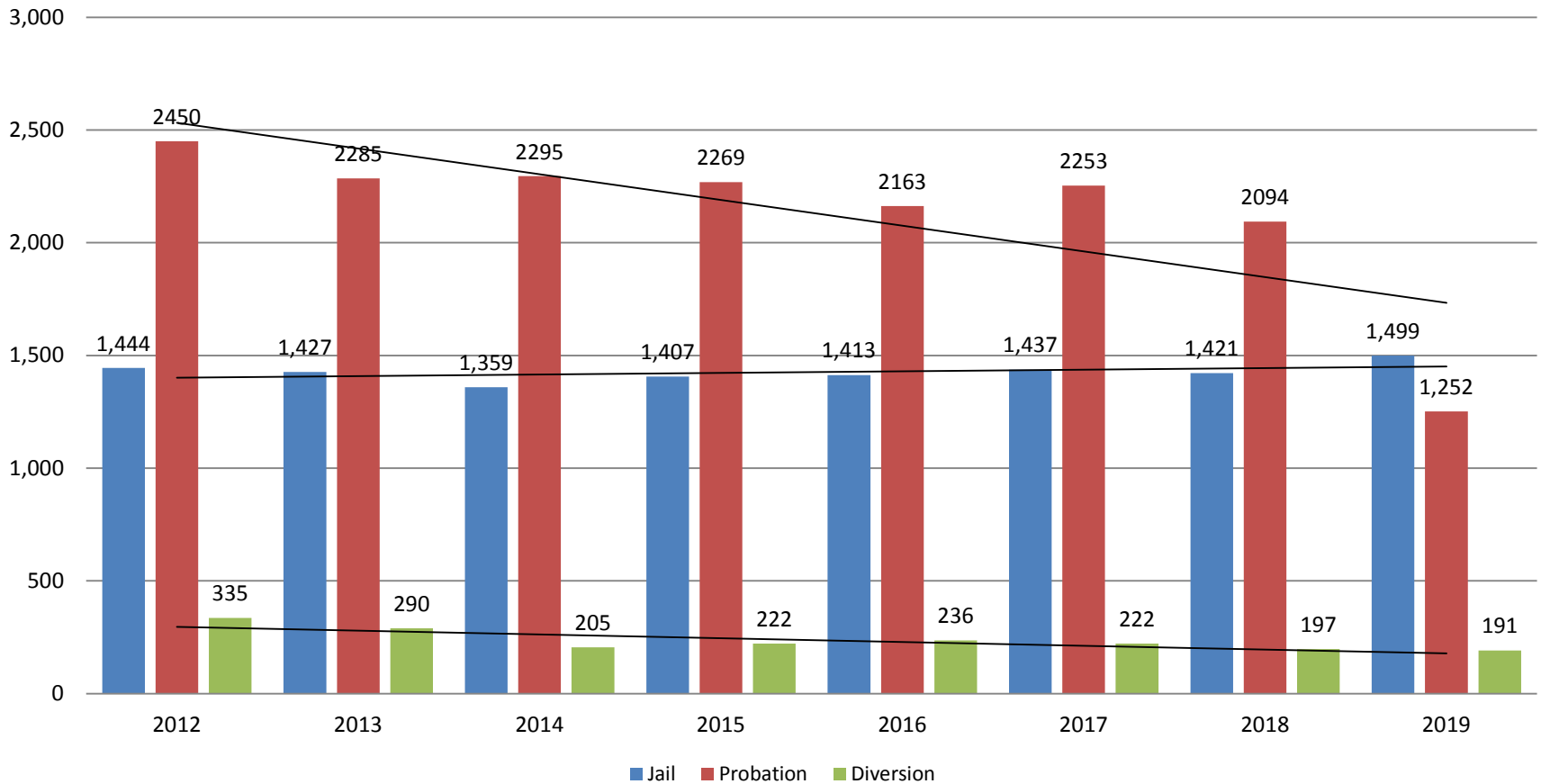


	2017	2018	2019
Jail	1,437	1,421	1,499
AISP	1,526	1,472	1,540
Drug Court	96	85	99
Adult Residential	59	59	65
Work Release	0	55	69
Day Reporting (DC)	0	0	0



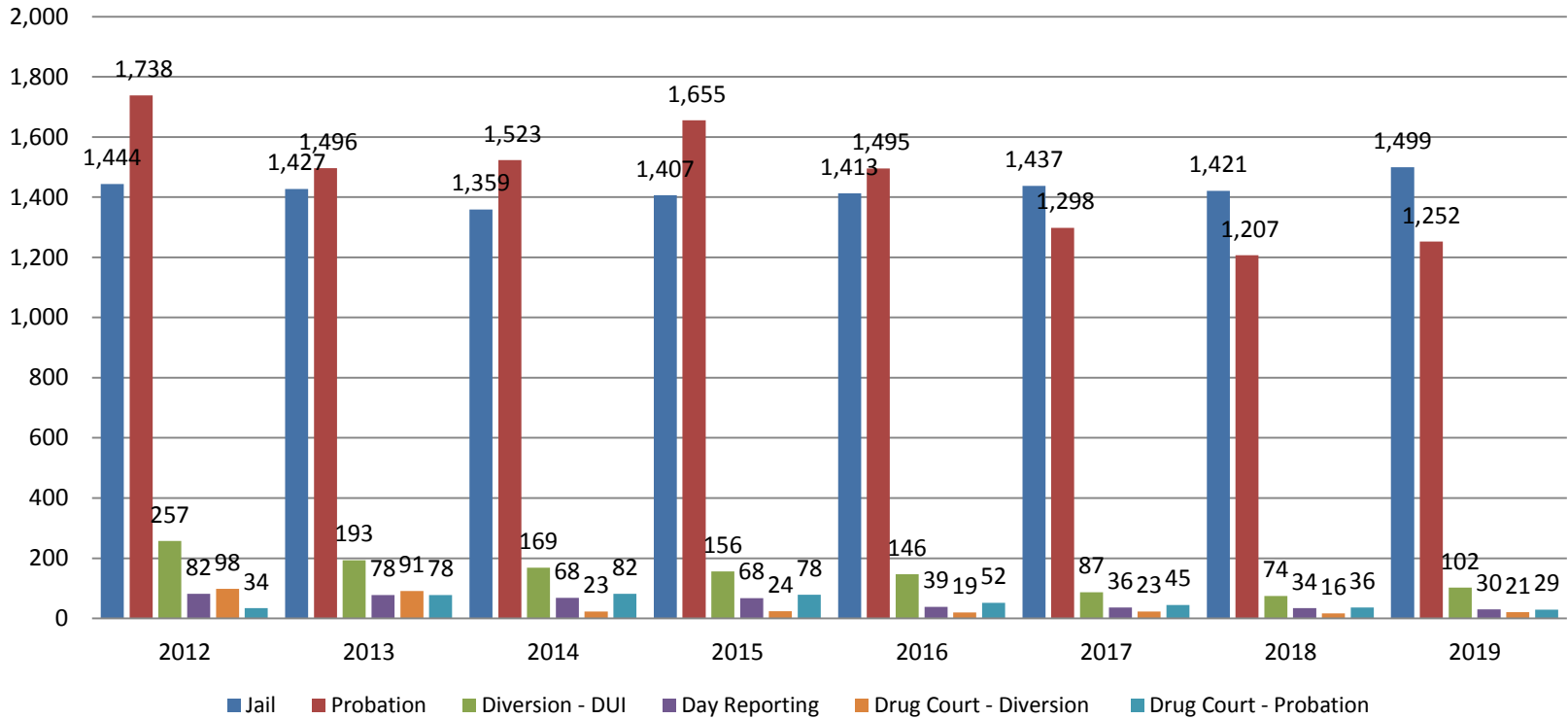
Correlation: Total & District Court Programs

Total Annual ADP: 2012 - Present



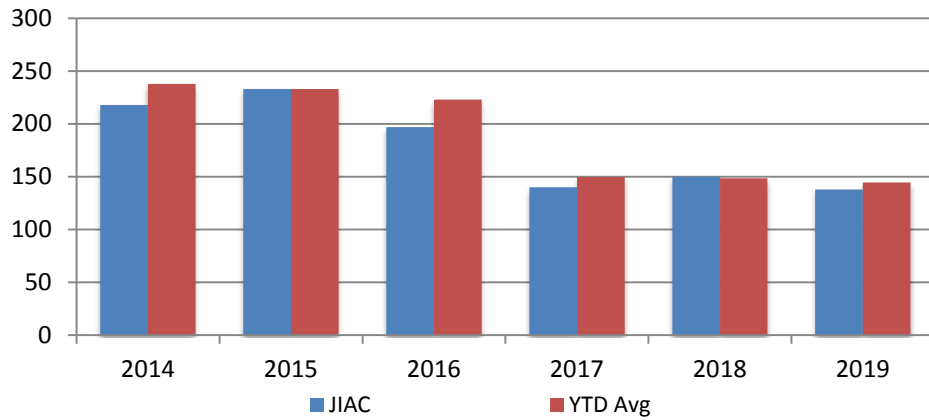
Correlation: Total & City of Wichita / Municipal Court Programs

Total Annual ADP: 2012 - present



Juvenile

JIAC Intakes
August 2014 - present

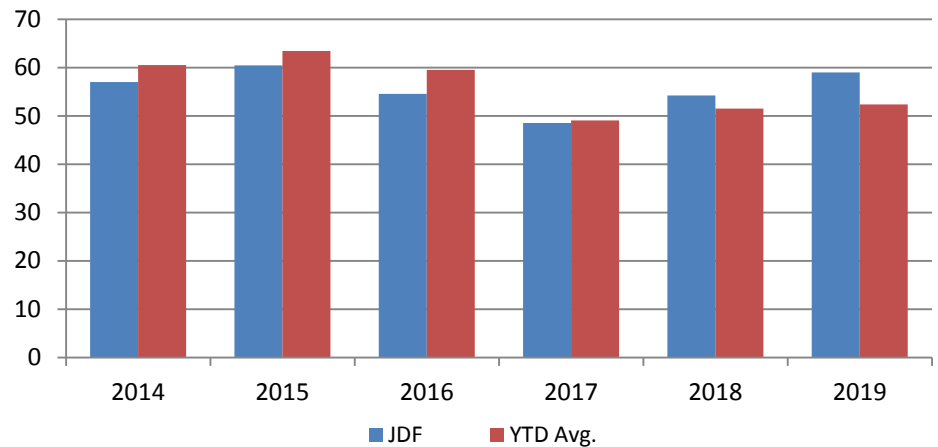


Year	August	August YTD Avg.
2014	218	238
2015	233	233
2016	197	223
2017	140	150
2018	150	148
2019	138	145

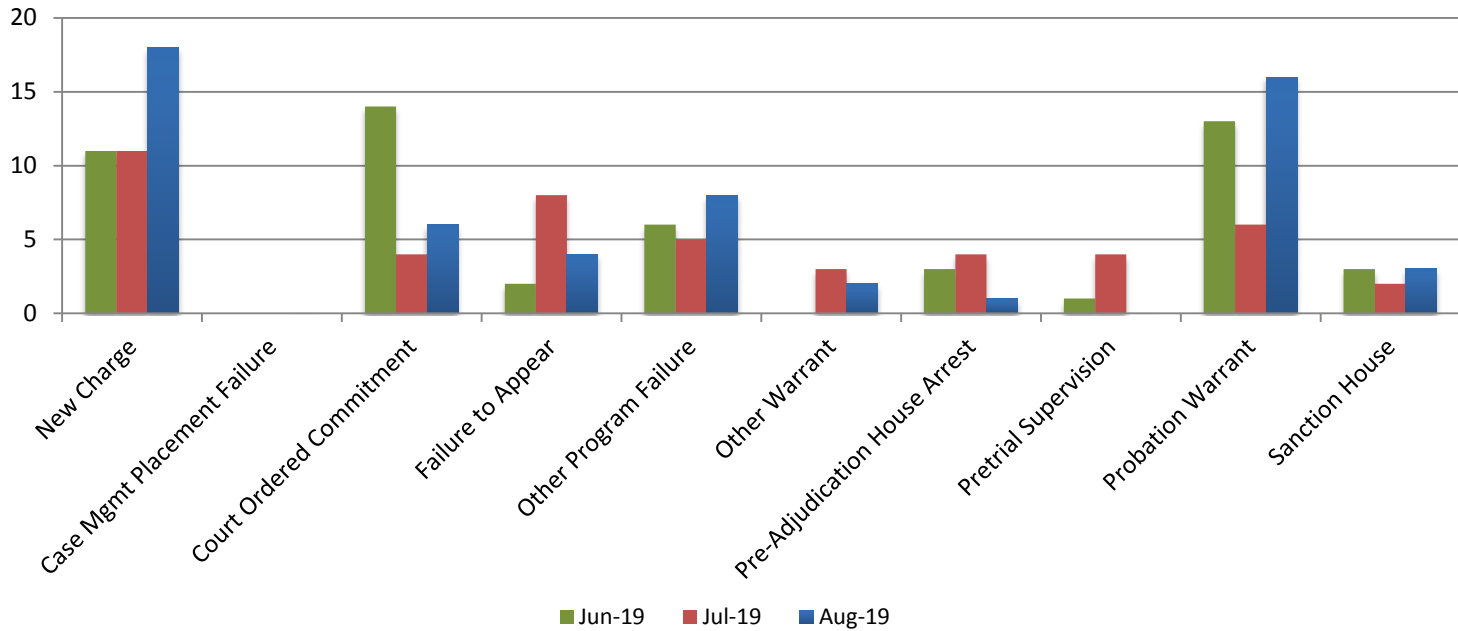
Year **August** **August YTD Avg.**

2014	57	61
2015	60	63
2016	55	60
2017	49	49
2018	54	52
2019	59	52

JDF ADP
August 2014 - present



Reason for JDF Admits



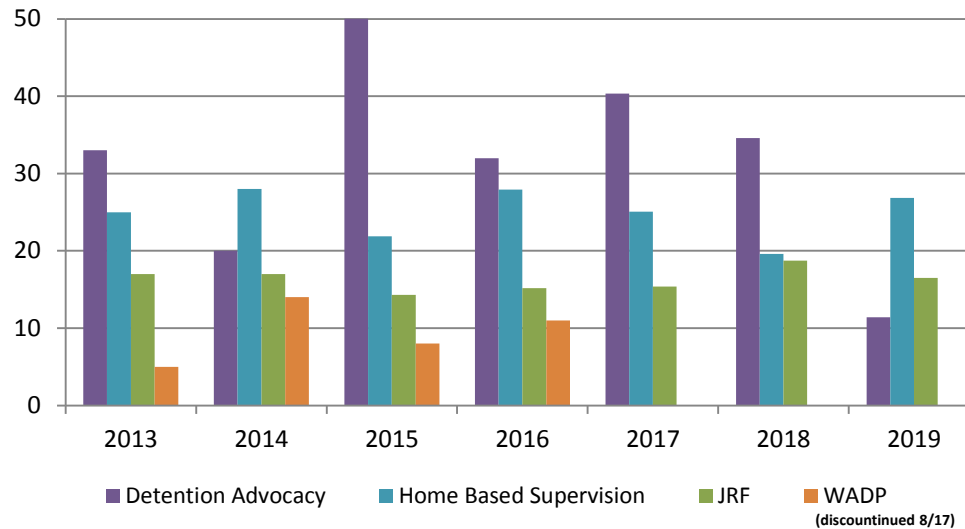
Reason for JDF Admits

Reason	August 2018	August 2019
New Charges	15	18
Case Management Placement Failures	0	0
Court Ordered Commitment	24	6
Failure to Appear	3	4
Other Program Failure	7	8
Other Warrant	1	2
Pre-Adjudication House Arrest	2	1
Pretrial Supervision	1	0
Probation Warrant	12	16
Sanction House	4	3



Juvenile Detention Alternatives

ADP: August 2013- Present



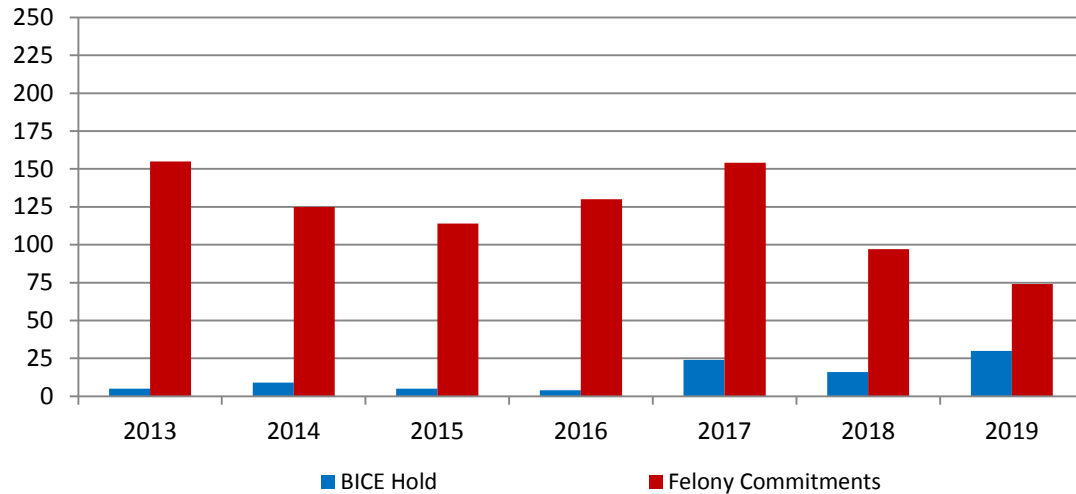
Juvenile Detention Services

July ADP	2016	2017	2018	2019
Juvenile Detention Facility	55	49	54	59
Juvenile Residential Facility	15	15	19	17
Home Based Supervision	28	25	20	27
Detention Advocacy Case Management Services	32	40	35	11
Weekend Alternative Detention Program (total)	11	0	0	N/A

July YTD AVERAGE	2016	2017	2018	2019
Juvenile Detention Facility	60	49	52	52
Juvenile Residential Facility	16	15	13	15
Home Based Supervision	27	22	25	28
Detention Advocacy Case Management Services	32	36	33	22
Weekend Alternative Detention Program	15	13	0	N/A

Monthly Jail Snapshot: July 31, 2019

Snapshots August 2013 - Present

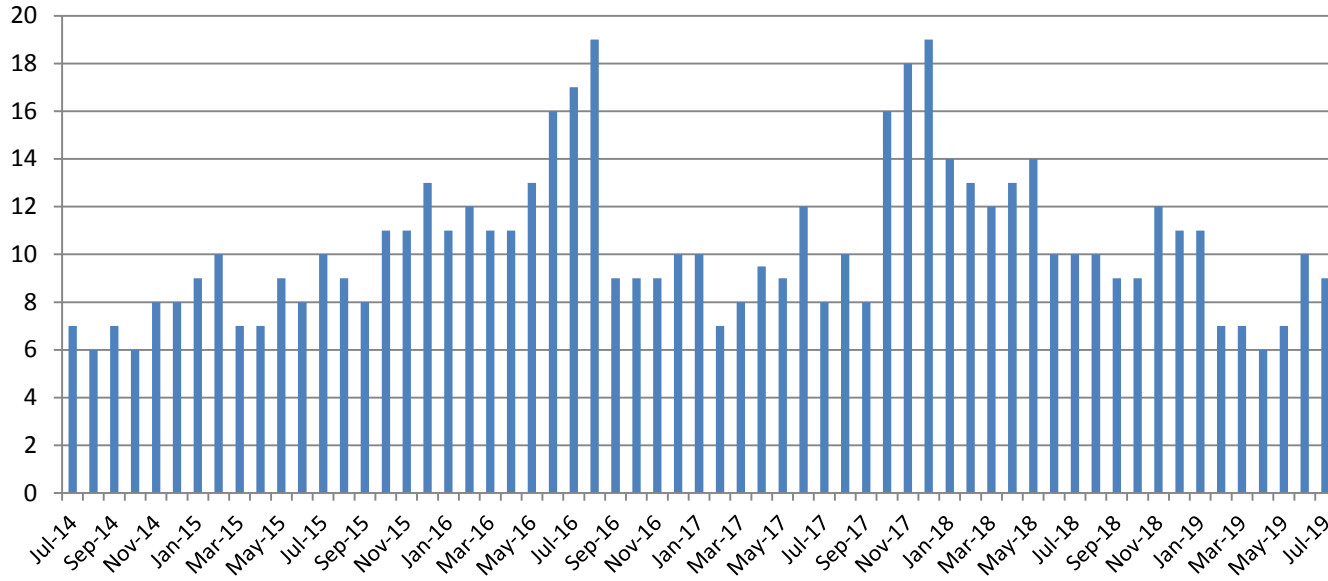


BICE Hold	2013	2014	2015	2016	2017	2018	2019
August	5	9	5	4	24	16	30

Felony Commitments	2013	2014	2015	2016	2017	2018	2019
August	155	125	114	130	154	97	74



Journal Entry Completion (Average Days) July 2014-Present



July	2014	2015	2016	2017	2018	2019
Avg. Days	8	8	16	12	10	9
YTD Avg.	8	8	12	9	12.6	8.14

