

# Extension Council

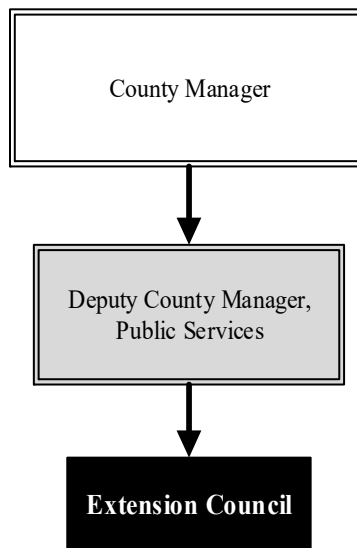
***Mission: Dedicated to a safe, competitive food and fiber system and to strong, healthy communities, families, and youth through integrated research, analysis, and education***

**Jennifer Brantley**  
**Sedgwick County Extension Director**

7001 W. 21st  
 Wichita, KS 67205  
 316.660.0105  
[brantley@ksu.edu](mailto:brantley@ksu.edu)

## Overview

Kansas State (K-State) Research and Extension - Sedgwick County is comprised of a group of agents who belong to a statewide network of educators sharing unbiased, research-based information and expertise on issues important to Kansas. With 131 years of research and 104 years of extension, K-State Research and Extension has been improving the quality of life and standard of living for Kansans for a century. This integrated system connects the University to the people of Sedgwick County through these locally based educators who serve as sources of objective information.



The Extension Council is comprised of 24 elected members, with each of the four program categories being represented by six members. An Executive Board of nine members is selected and works with the Director to provide oversight of County Extension programs and services.

## Highlights

- The Sedgwick County Office of K-State Research & Extension focuses on the five challenges of water, health, global food systems, growing tomorrow's leaders, and community vitalization
- Programs and demonstrations are provided through the areas of 4-H Youth Development, Agriculture/Horticulture and Natural Resources, Family and Consumer Science, and Community Development

## Strategic Goals:

- *Assist families in achieving a balance in their personal and community roles*
- *Improve viability of Sedgwick County agriculture and livestock production*
- *Assist youth in developing life skills to become self-directing adults*
- *Protect natural resources and the environment through targeted educational programming*



# Accomplishments and Strategic Results

## Accomplishments

In 2018, the Senior Health Insurance Counseling of Kansas (SHICK) program reached 7,534 individuals and saved local citizens \$4.1 million in health care costs.

Sedgwick County Master Gardener Volunteers contributed 20,283 volunteer hours in 2018, equivalent to 9.75 full time Extension agents. Agriculture programs reached over 52,013 Sedgwick County residents and answered questions through the hotline of over 3,883 community members. Over 61,548 pounds of fresh produce was provided to local food banks through the Plant a Row for the Hungry Program.

Over 3,700 youth were reached in 2018 through the 4-H school enrichment programs that supplement an educator's curriculum goals. Seventy-eight percent of that engagement was from urban and suburban areas in the County. Fifteen Sedgwick County 4-H clubs identified needs in the community and mobilized members to action through 87 service projects. These projects included painting fire hydrants, making sandwiches for the homeless, and a book drive for the library. The 87 projects resulted in 6,264 hours of giving back to the community.

## Strategic Results

Sedgwick County Extension provides practical, research-based education to help people, businesses, and communities solve problems, develop skills, and build a better future. The focus in Kansas is on solving challenges in the State which include: 1) educating citizens on how to reduce the amount of water used by households, lawns, gardens, and agricultural production; 2) educating citizens on healthy eating habits and the importance of physical activity for a healthy lifestyle, as well as continuing to lead in providing SHICK programs and Medicare counseling to an aging population; 3) providing research-based information to help agriculture producers be efficient and effective in producing food to feed the world and encouraging local production and consumption of foods; 4) growing tomorrow's leaders through the 4-H program, which offers positive youth development to help young people develop into competent, capable, caring, contributing citizens; and 5) providing a multi-disciplinary approach to strengthen communities through programming in strong family relationships, youth involvement, community beautification, health and wellness, and community programs.

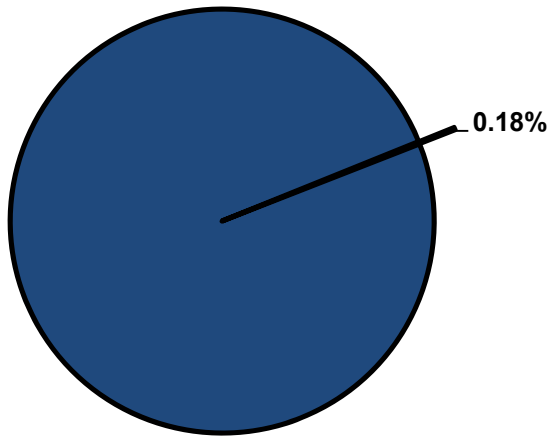


## Significant Budget Adjustments

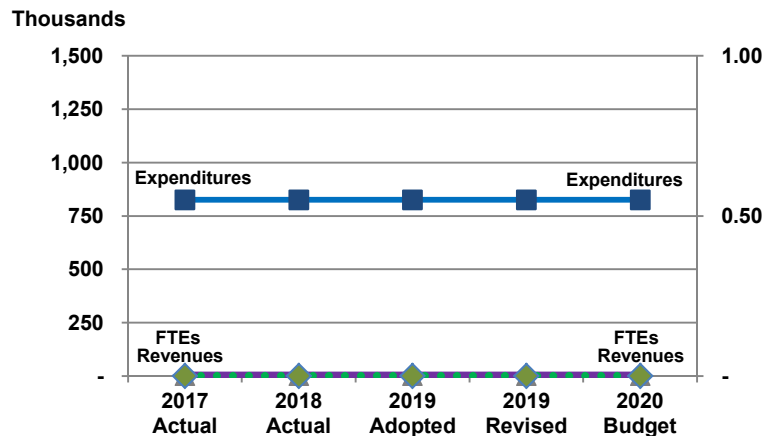
There are no significant adjustments to the Extension Council's 2020 budget.

**Departmental Graphical Summary**

**Extension Council**  
Percent of Total County Operating Budget



**Expenditures, Program Revenue & FTEs**  
All Operating Funds



**Budget Summary by Category**

	2017 Actual	2018 Actual	2019 Adopted	2019 Revised	2020 Budget	Amount Chg '19 Rev.-'20	% Chg '19 Rev.-'20
<b>Expenditures</b>							
Personnel	-	-	-	-	-	-	-
Contractual Services	825,481	825,481	825,481	825,481	825,481	-	0.00%
Debt Service	-	-	-	-	-	-	-
Commodities	-	-	-	-	-	-	-
Capital Improvements	-	-	-	-	-	-	-
Capital Equipment	-	-	-	-	-	-	-
Interfund Transfers	-	-	-	-	-	-	-
<b>Total Expenditures</b>	<b>825,481</b>	<b>825,481</b>	<b>825,481</b>	<b>825,481</b>	<b>825,481</b>	<b>-</b>	<b>0.00%</b>
<b>Revenues</b>							
Tax Revenues	-	-	-	-	-	-	-
Licenses and Permits	-	-	-	-	-	-	-
Intergovernmental	-	-	-	-	-	-	-
Charges for Services	-	-	-	-	-	-	-
All Other Revenue	-	-	-	-	-	-	-
<b>Total Revenues</b>	<b>-</b>	<b>-</b>	<b>-</b>	<b>-</b>	<b>-</b>	<b>-</b>	<b>-</b>
<b>Full-Time Equivalents (FTEs)</b>							
Property Tax Funded	-	-	-	-	-	-	-
Non-Property Tax Funded	-	-	-	-	-	-	-
<b>Total FTEs</b>	<b>-</b>	<b>-</b>	<b>-</b>	<b>-</b>	<b>-</b>	<b>-</b>	<b>-</b>

**Budget Summary by Fund**

Fund	2017 Actual	2018 Actual	2019 Adopted	2019 Revised	2020 Budget	Amount Chg '19 Rev.-'20	% Chg '19 Rev.-'20
General Fund	825,481	825,481	825,481	825,481	825,481	-	0.00%
<b>Total Expenditures</b>	<b>825,481</b>	<b>825,481</b>	<b>825,481</b>	<b>825,481</b>	<b>825,481</b>	<b>-</b>	<b>0.00%</b>

**Significant Budget Adjustments from Prior Year Revised Budget**

Expenditures      Revenues      FTEs

Total      -      -      -

**Budget Summary by Program**

Program	Fund	2017 Actual	2018 Actual	2019 Adopted	2019 Revised	2020 Budget	% Chg '19 Rev.-'20	2020 FTEs
Extension Council	110	825,481	825,481	825,481	825,481	825,481	0.00%	-
<b>Total</b>		<b>825,481</b>	<b>825,481</b>	<b>825,481</b>	<b>825,481</b>	<b>825,481</b>	<b>0.00%</b>	<b>-</b>