

Criminal Justice Coordinating Council

Population Report & Program Trends

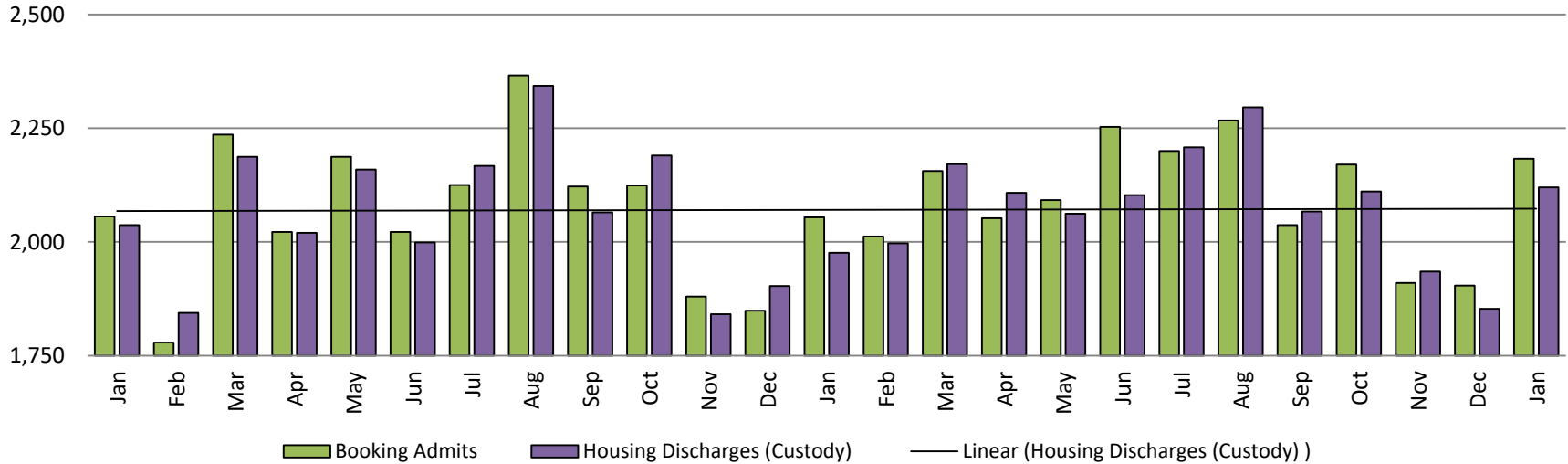
February 2020



Sedgwick County...
working for you

Detention Facility

Booking Admits & Housing Discharges from Custody January 2018 - present



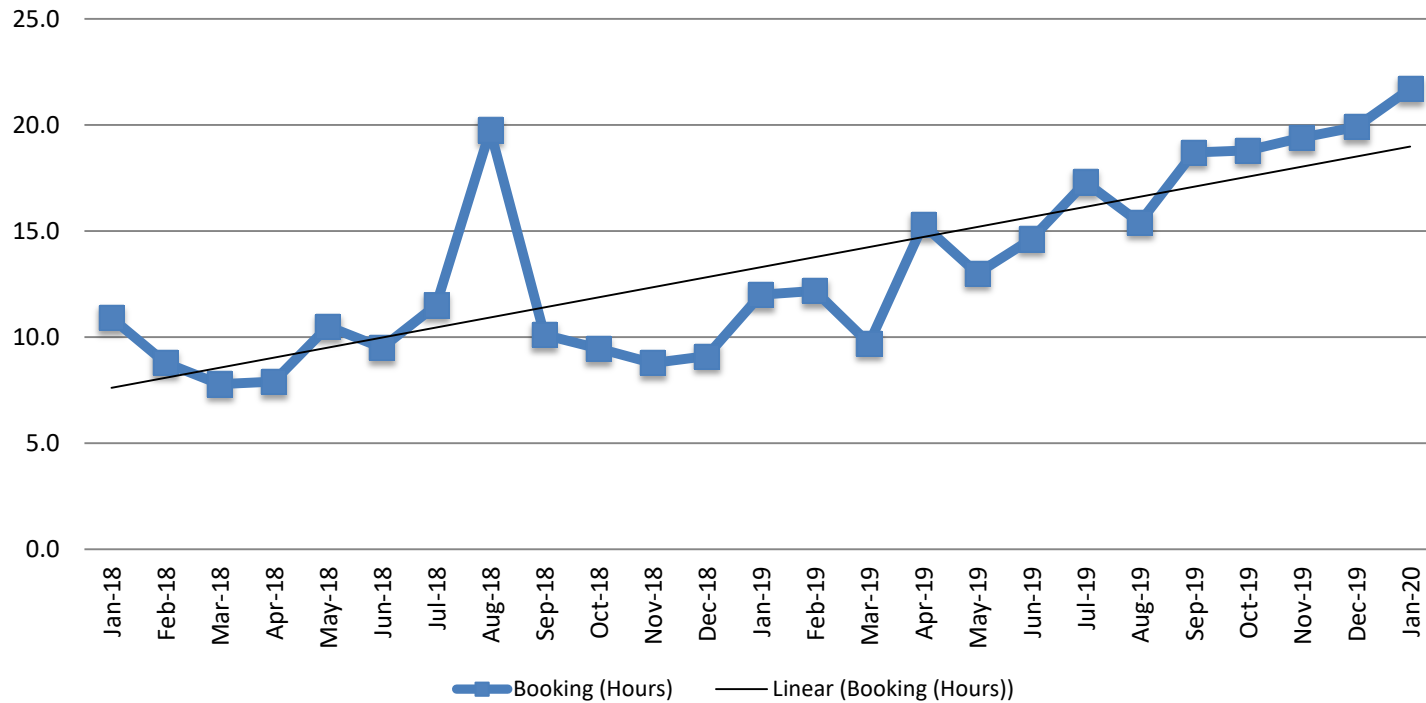
Bookings Year over Year: Month of January



Bookings January	Housing Discharges January
2018: 2,056	2018: 2,037
2019: 2,054	2019: 1,976
2020: 2,183	2020: 2,120

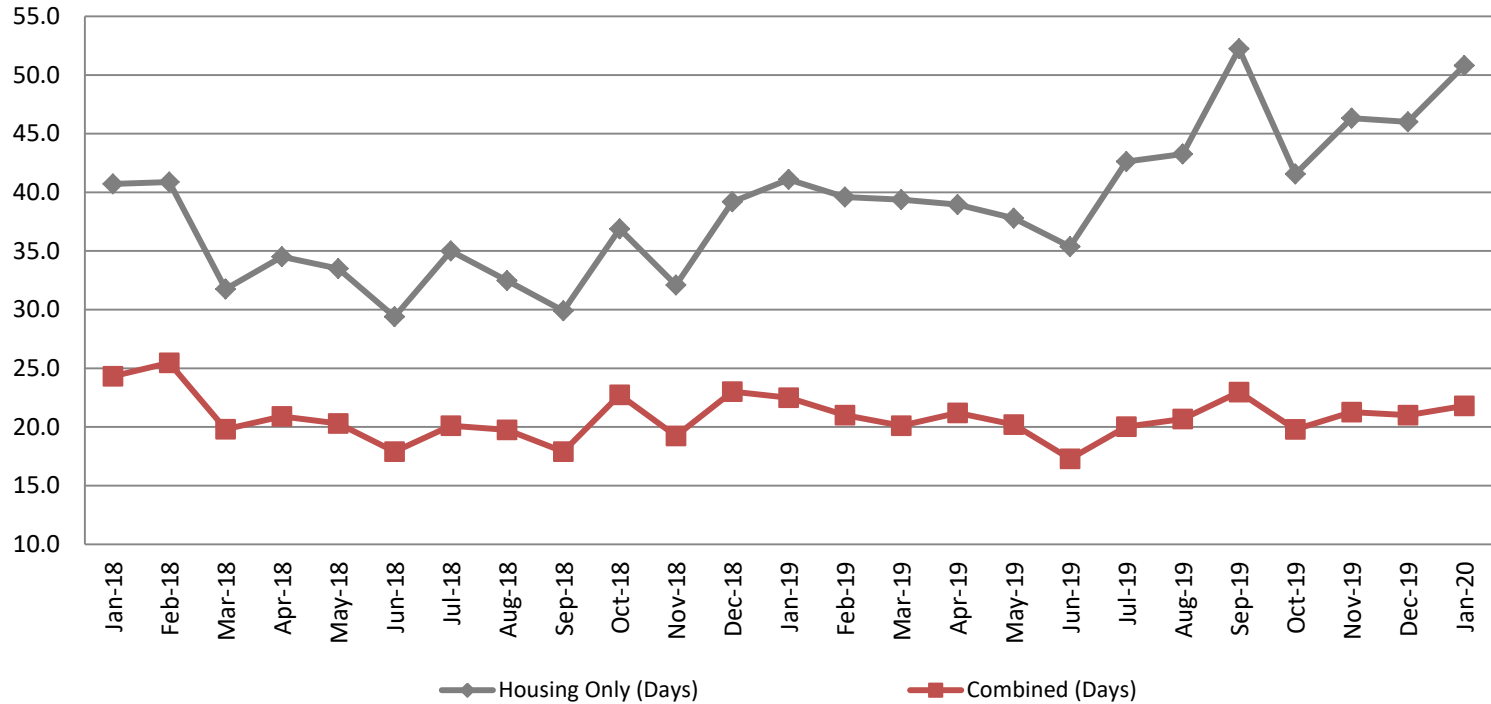


Average Length of Stay: Booking (Hours) January 2018 - present



January	January YTD Average
2018: 10.9	2018: 10.9
2019: 12.0	2019: 12.
2020: 21.7	2020: 21.7

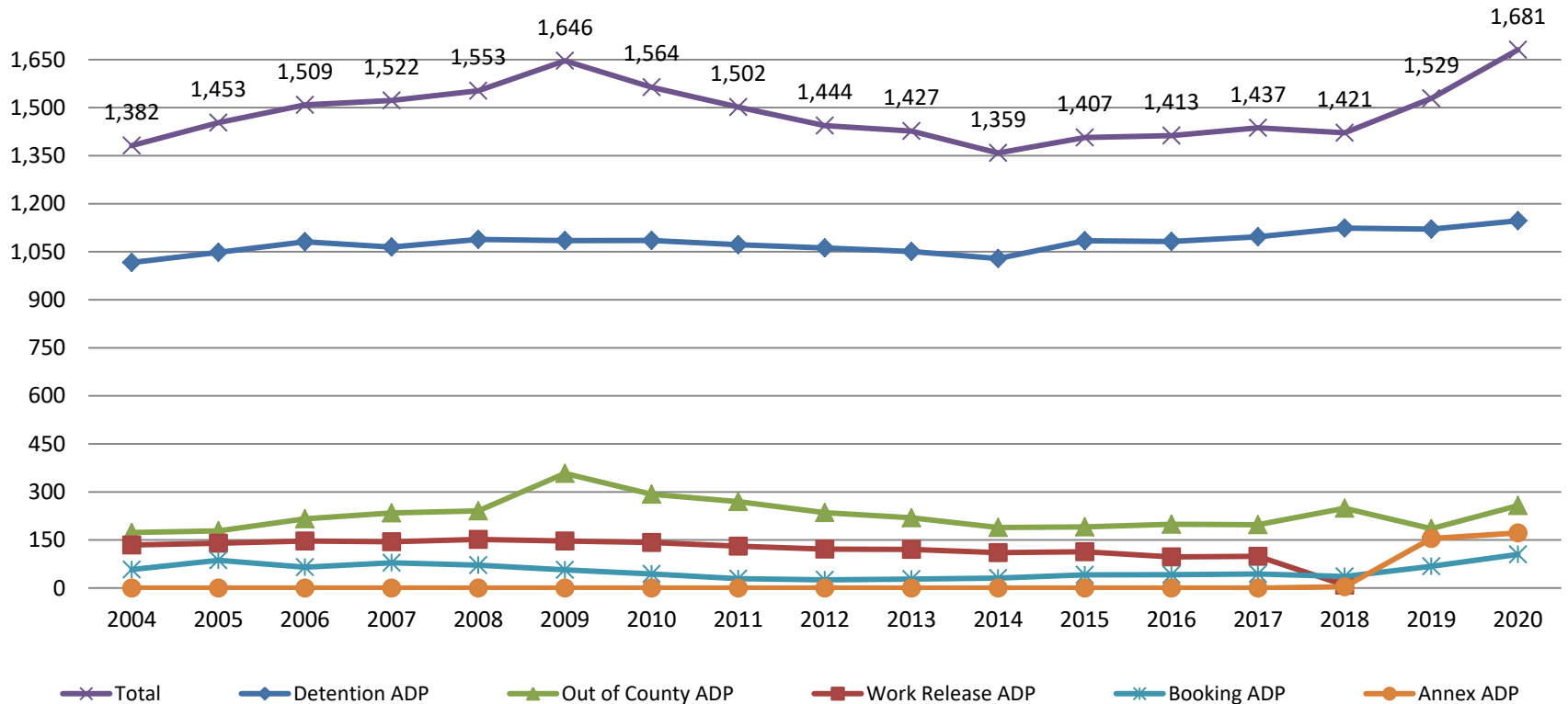
Average Length of Stay: Housing & Combined (Days) January 2018 - present



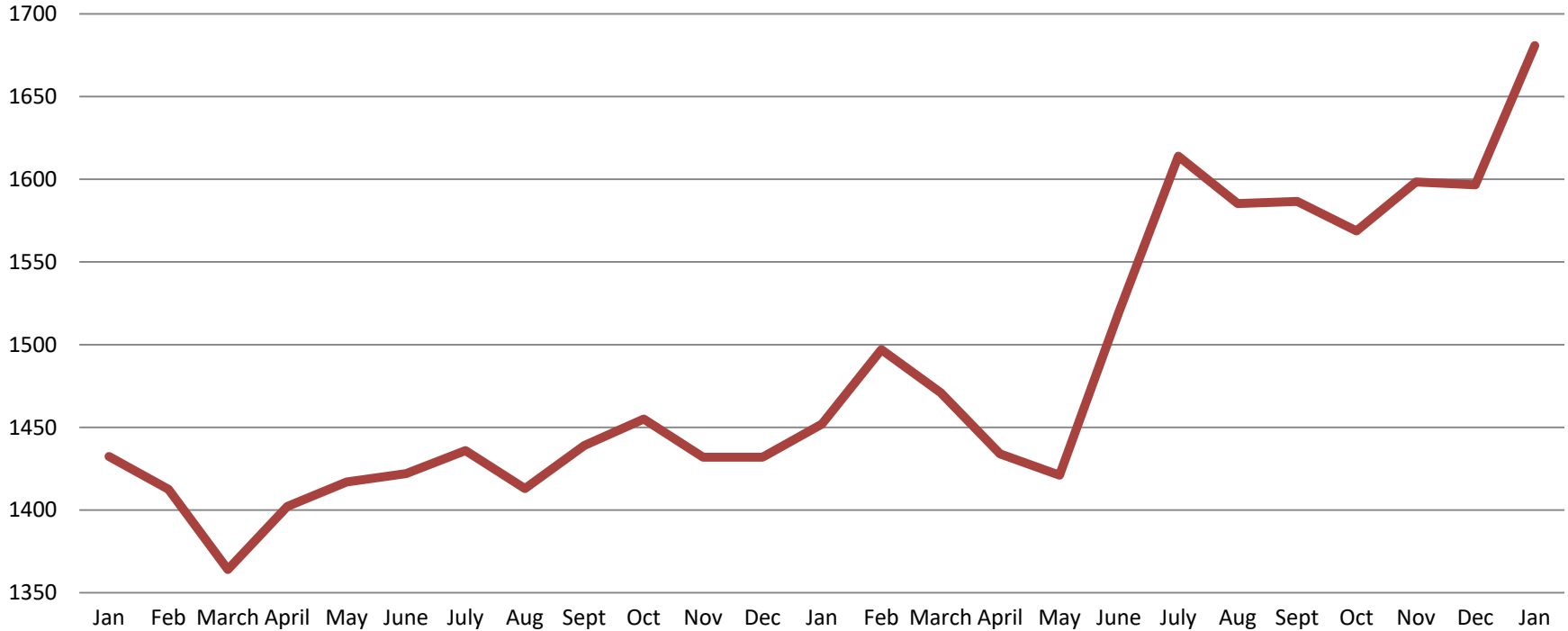
Month Year	Housing Only	Housing YTD AVG	Combined Days	Combined YTD AVG
January 2018	40.7	40.7	24.3	24.3
January 2019	41.1	41.1	22.5	22.5
January 2020	50.8	50.8	21.8	21.8

Jail: Annual Average Daily Population (ADP)

**TRENDS: Booking, Detention, Work Release, & Out of County Annual ADP:
2004 - present**

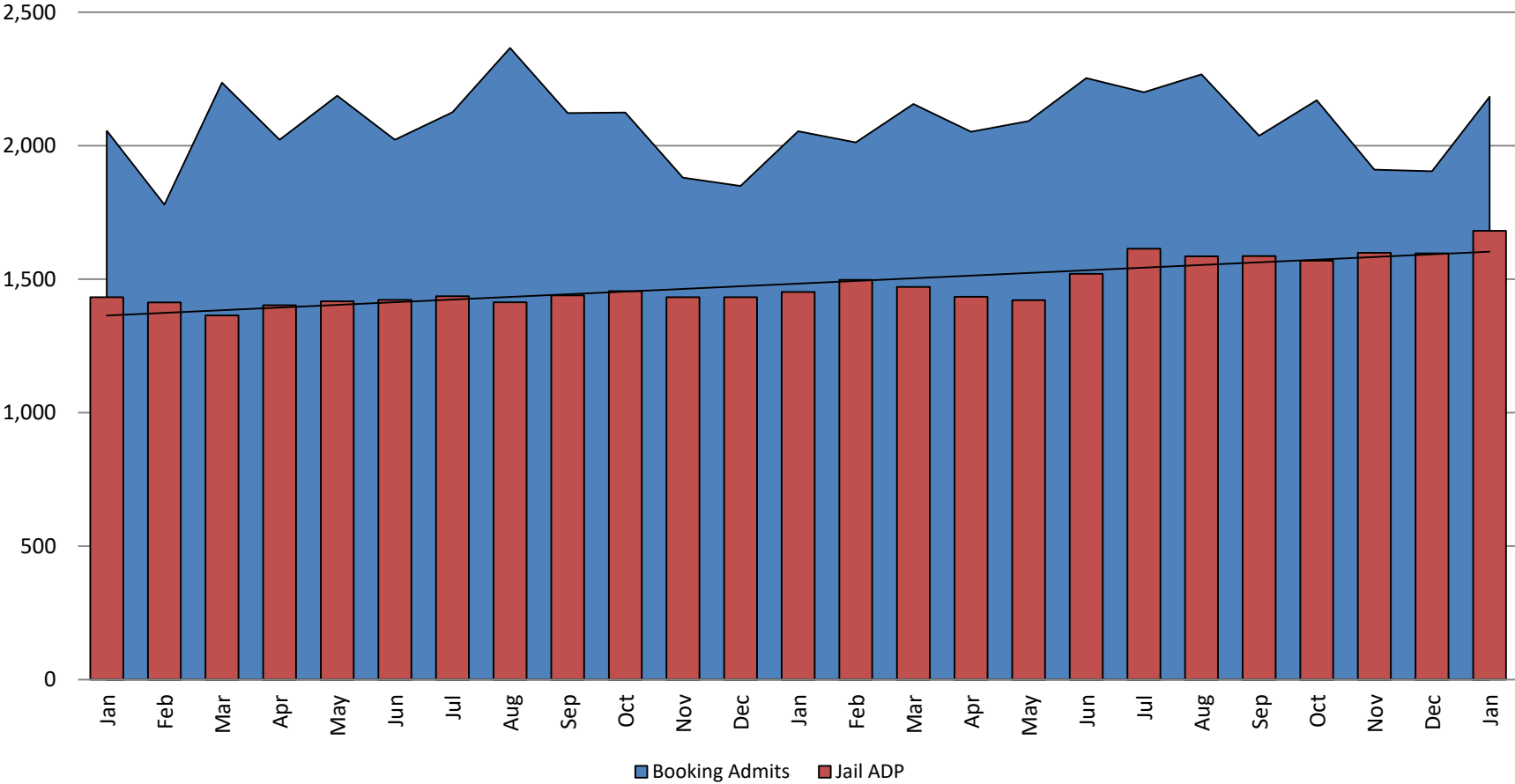


TOTAL MONTHLY ADP: JAIL (Booking, Detention Facility, Annex, & Out of County) January 2018 - present

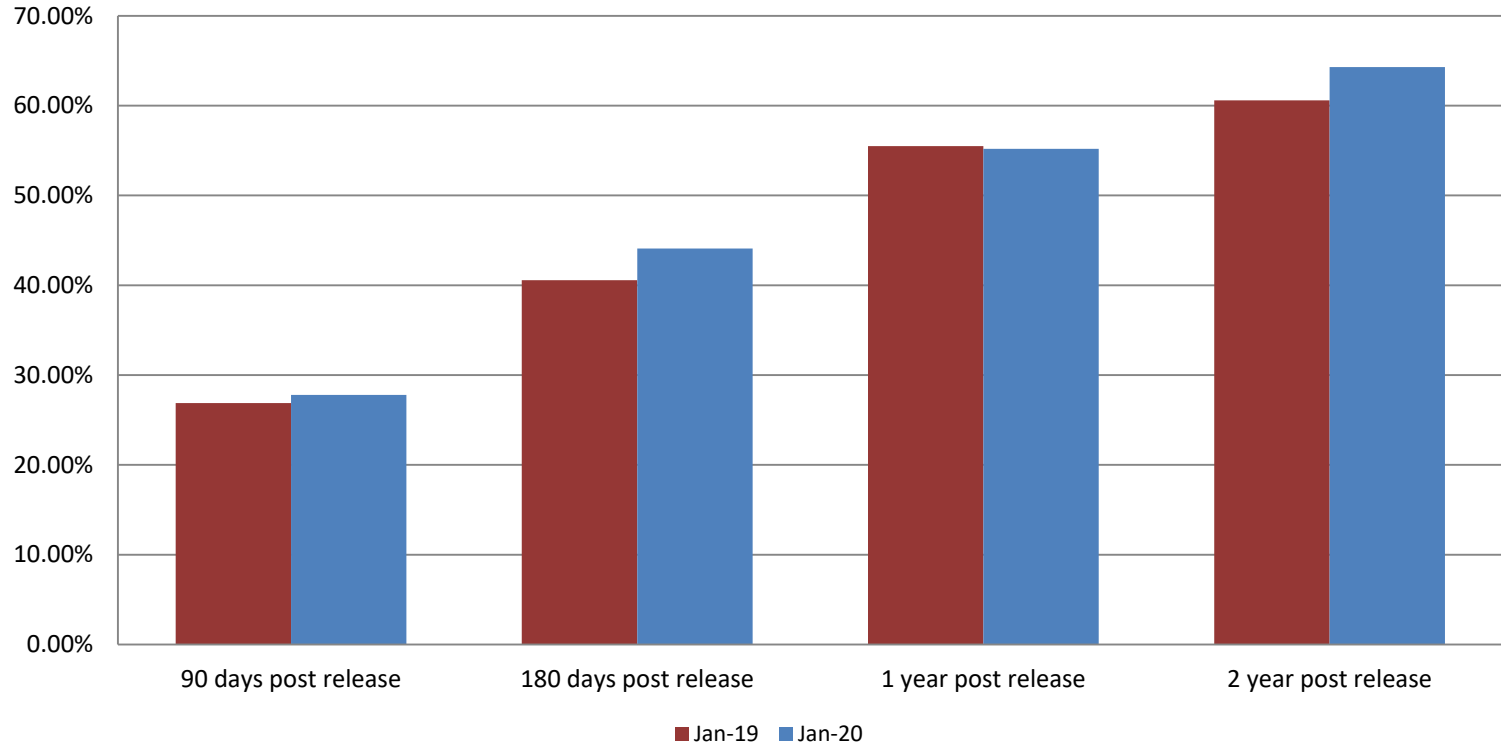


January 2018	January 2019	January 2020
1,432	1,452	1,681

Booking Admits & Total Monthly ADP (Jail): January 2018 - present



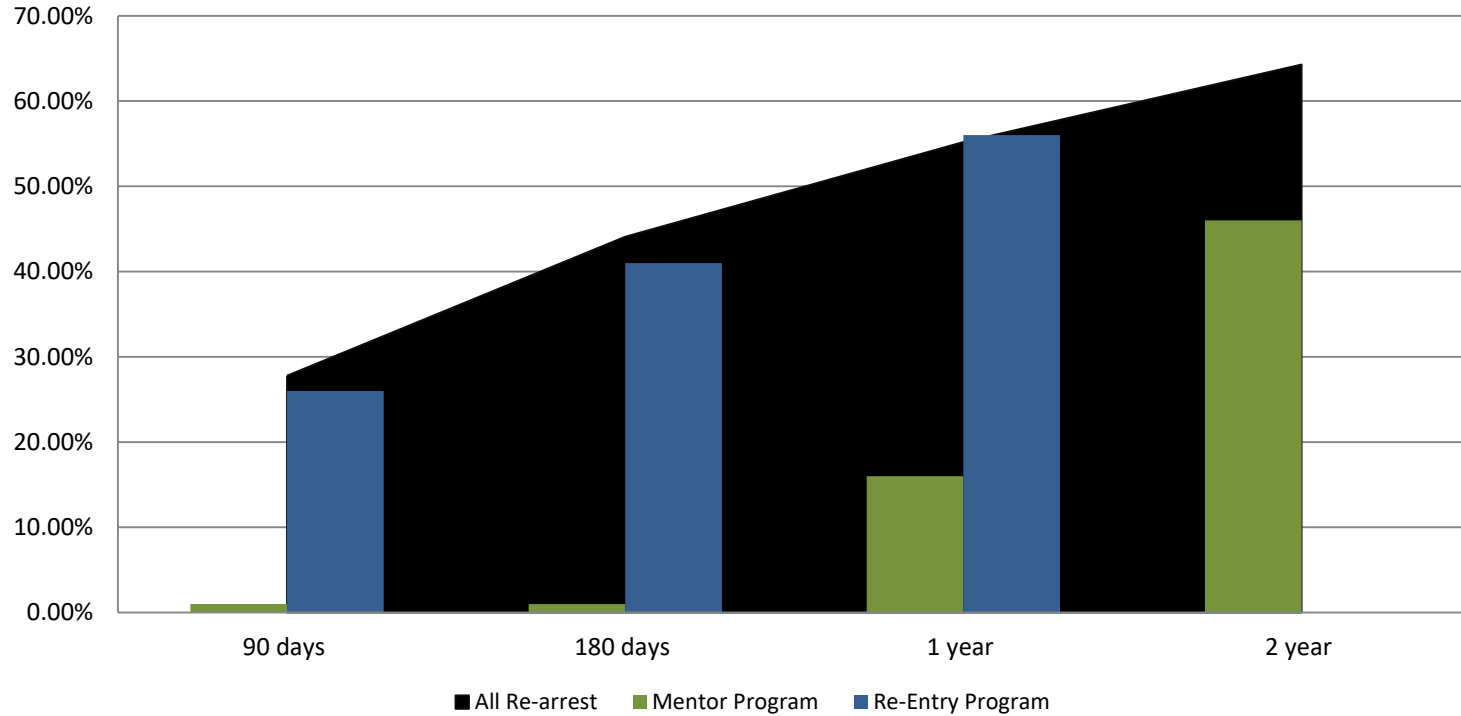
Percent of released inmates rearrested January



Month Year	90 Days	180 Days	1 Year	2 Years
January 2019	26.89%	40.57%	55.50%	60.59%
January 2020	27.78%	44.09%	55.19%	64.29%

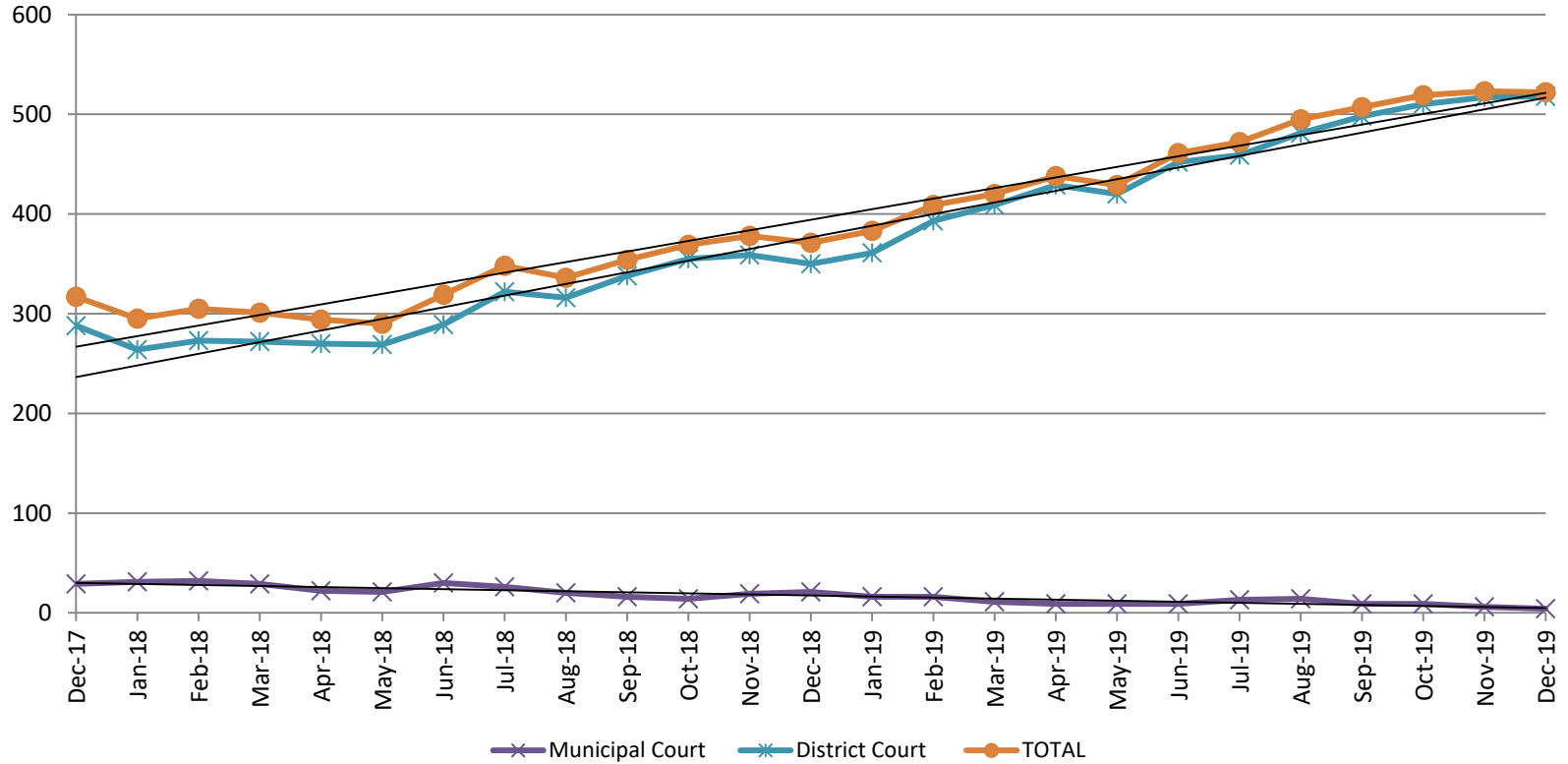


Recidivism by Programs January 2020



January 2020	90 Days	180 Days	1 year	2 years
All Re-arrests	27.78%	44.09%	55.19%	64.29%
Mentor Program	1%	1%	16%	46%
Re-Entry Program	26%	41%	56%	N/A

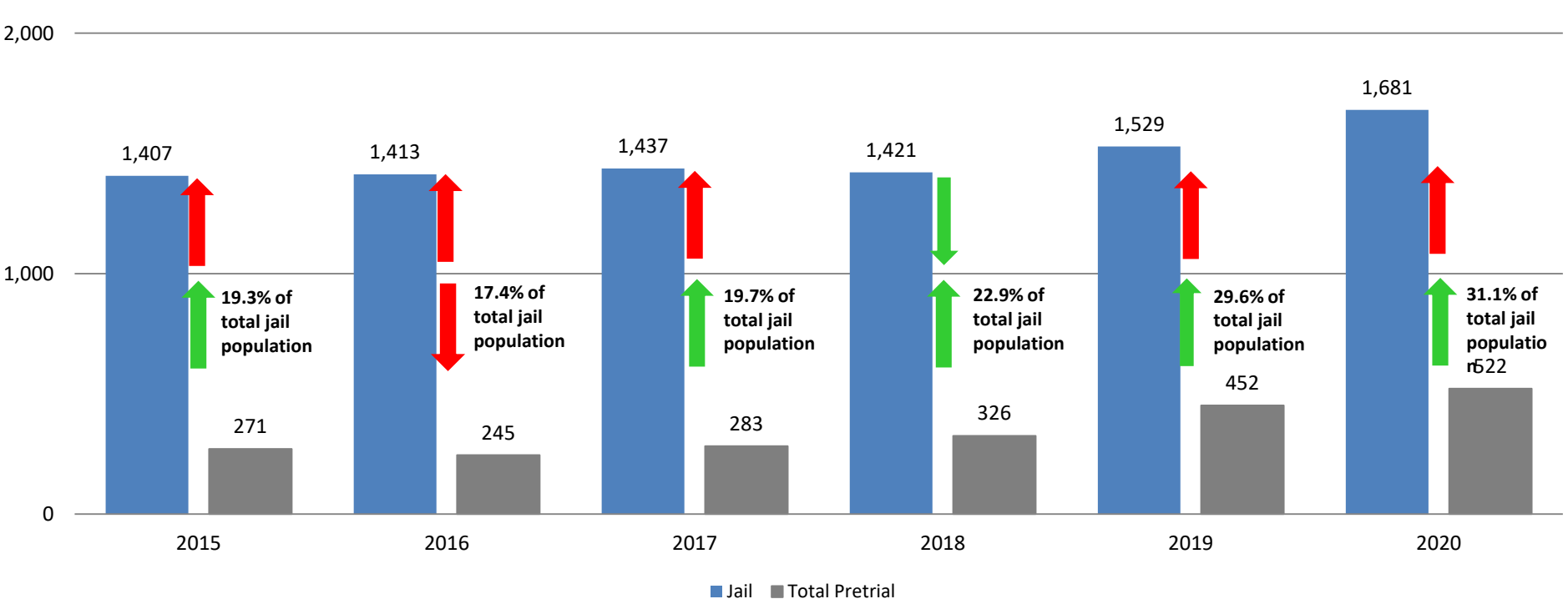
Pretrial Services Program (PSP) Monthly ADP: January 2018 - present



January	2018 ADP	2019 ADP	2020 ADP	2018 YTD Avg.	2019 YTD Avg.	2020 YTD Avg.
Muni. Court	29	21	4	29	21	4
Dist. Court	288	350	518	288	350	518
Total	317	371	522	317	371	522

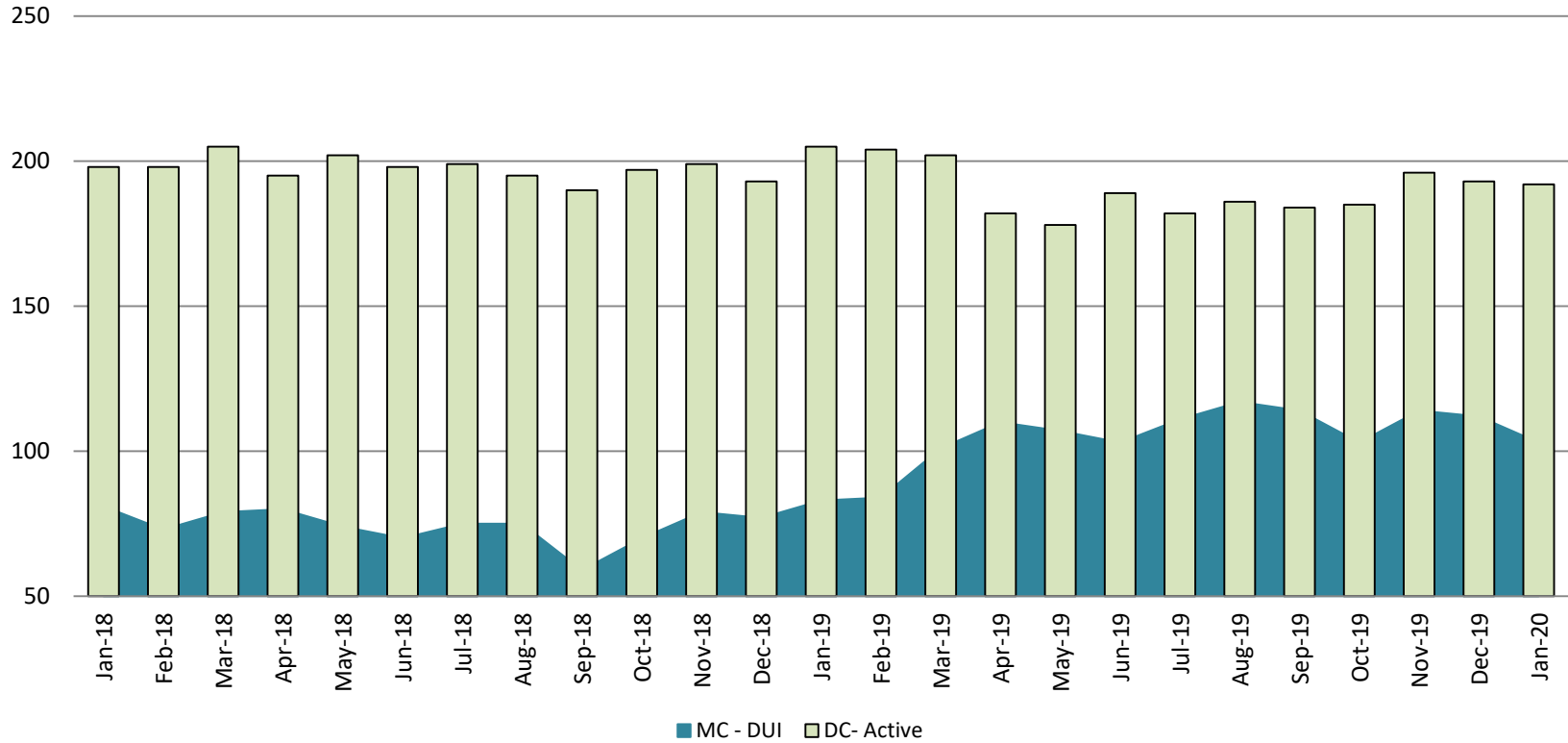
Correlation: Total & PSP

Total Annual ADP: 2015 - present



Diversion - Active Caseload

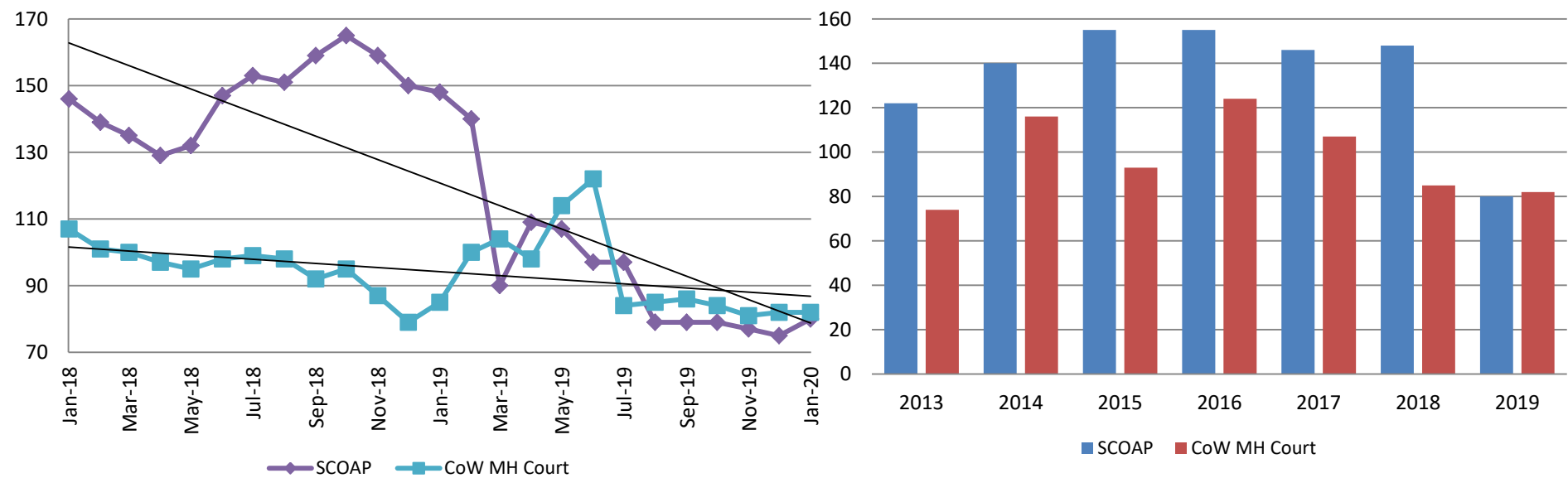
January 2018 - present



January	2018	2019	2020	2018 YTD Avg.	2019 YTD Avg.	2020 YTD Avg.
Muni. Court- DUI	81	83	103	81	83	103
Dist. Court- Active	198	205	192	198	205	192

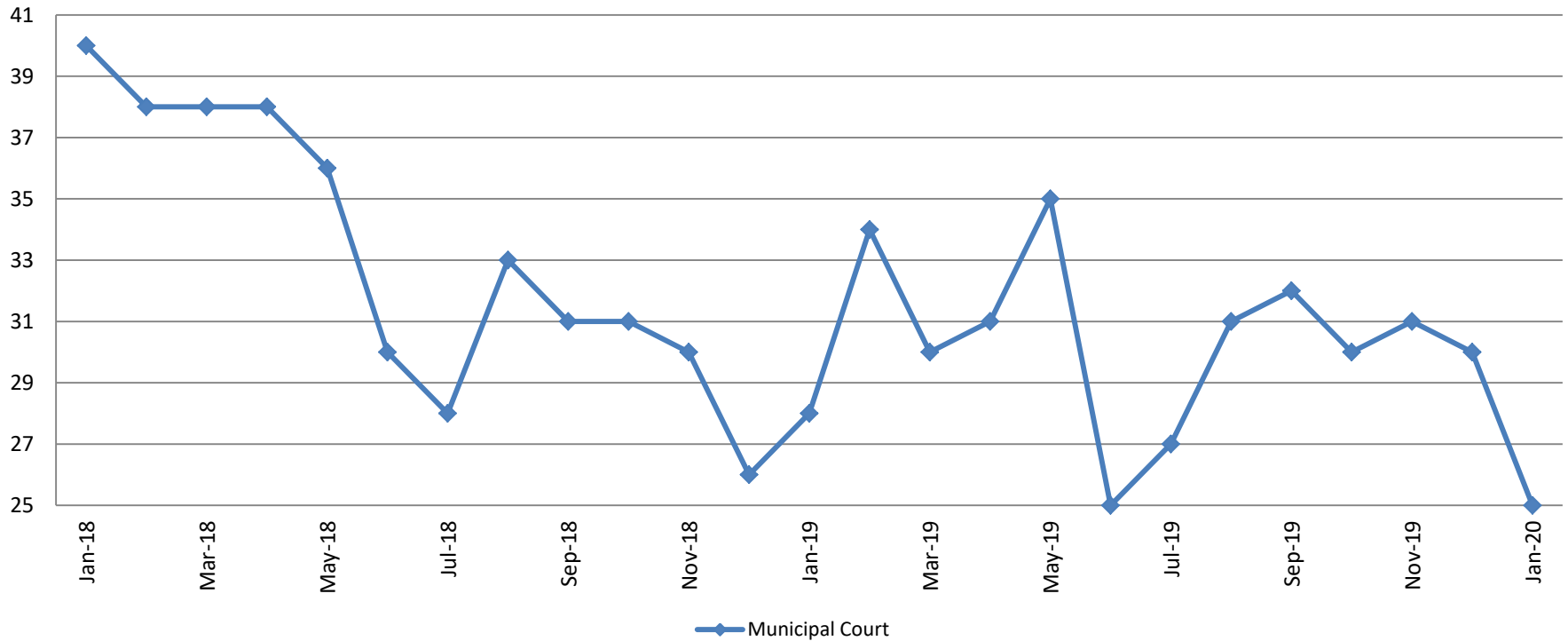
Mental Health - ADP January 2018 - present

Mental Health ADP Year over Year- January



January	2018 ADP	2019 ADP	2020 ADP	2018YTD Avg.	2019 YTD Avg.	2020 YTD Avg.
SCOAP	146	148	80	146	148	80
MH Court	107	85	82	107	85	82

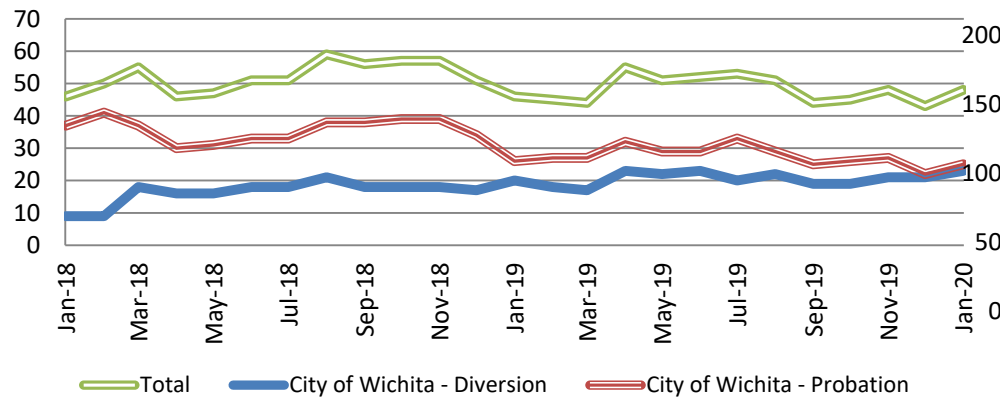
Day Reporting - Active Caseload January 2018 - present



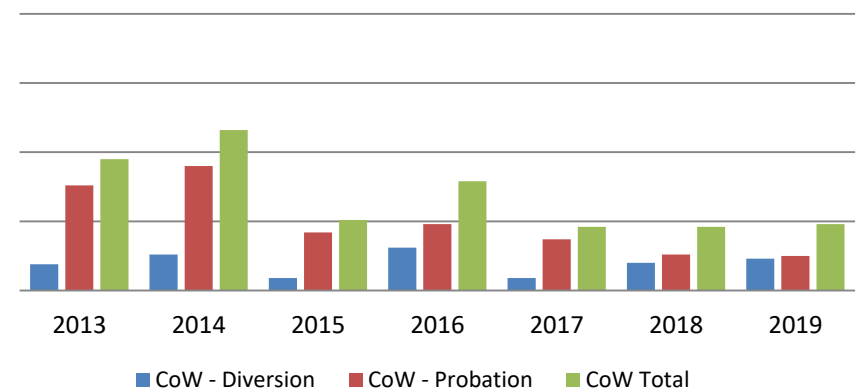
January	2015	2016	2017	2018	2019	2020
Muni. Court	74	47	35	40	28	25
Muni. Court YTD Avg.	74	47	35	40	28	25



Drug Court - City of Wichita ADP: January 2018 - present

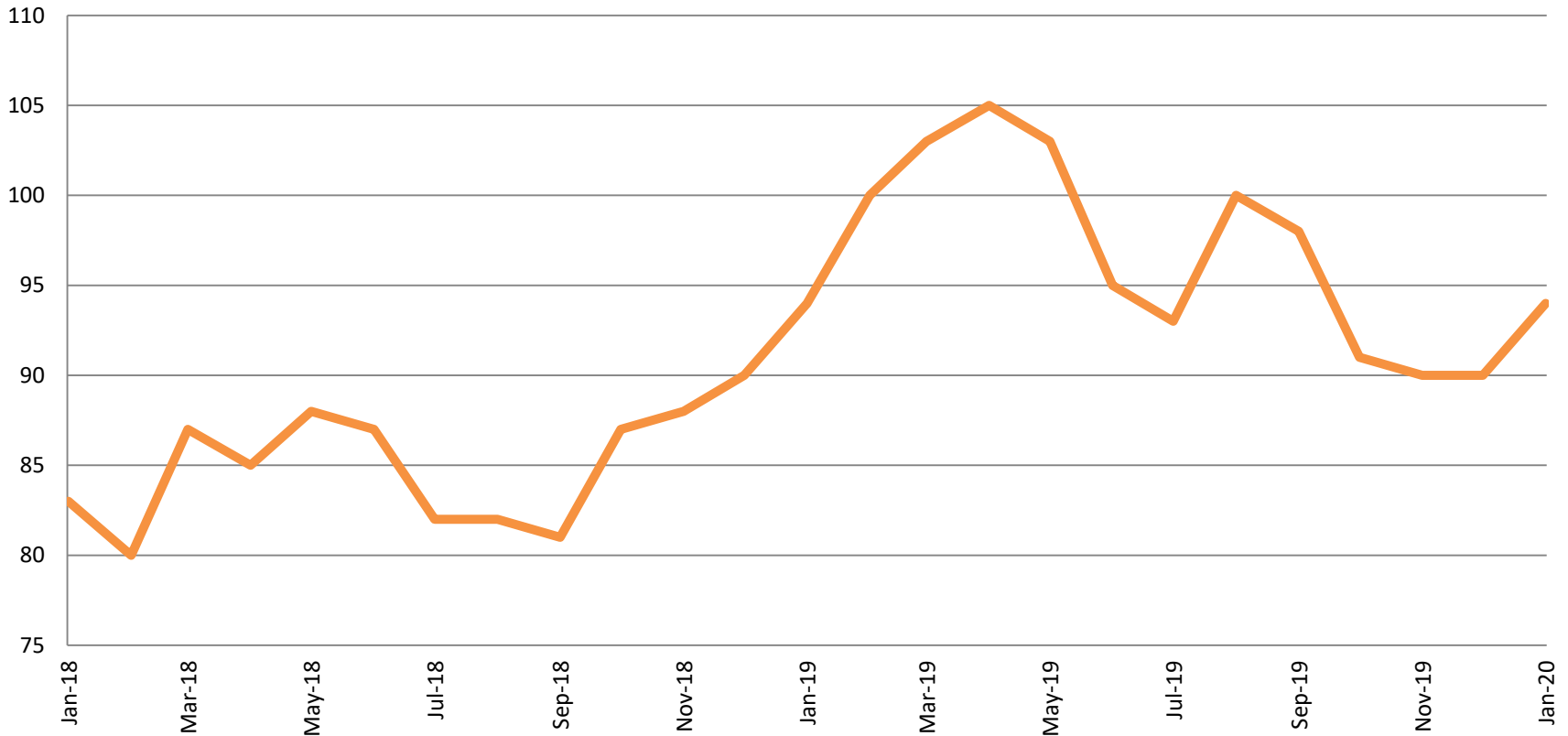


Drug Court- City of Wichita Year over Year - January



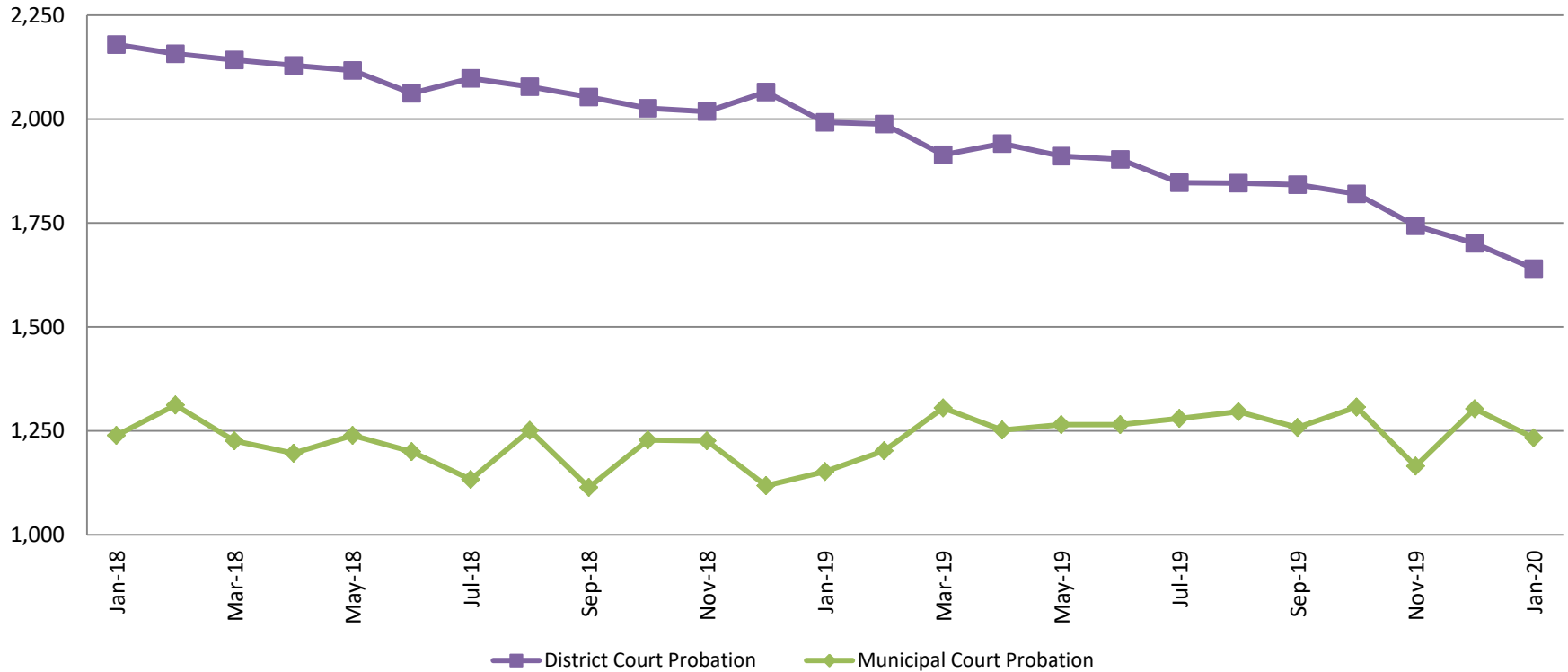
January	2018	2019	2020
Diversion	9	20	23
Probation	37	26	25
Total	46	46	48

Drug Court - Sedgwick County ADP: January 2018 - present



	January	2018	2019	2020
Sedg. Co. ADP		83	94	94
YTD Avg.		83	94	94

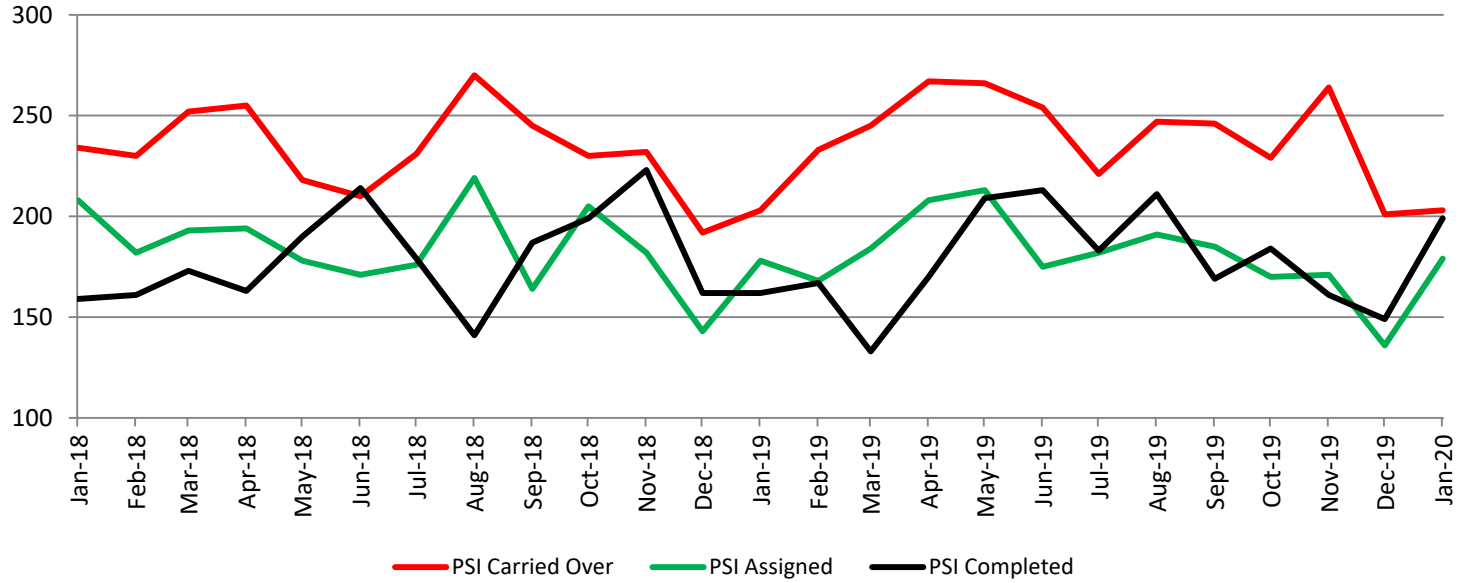
Probation - Active Caseloads January 2018 - present



January	2018	2019	2020	2018 YTD Avg.	2019 YTD Avg.	2020 YTD Avg.
Dist. Court Probation	2,179	1,992	1,640	2,179	1,992	1,640
Muni. Court Probation	1,239	1,152	1,233	1,239	1,152	1,233



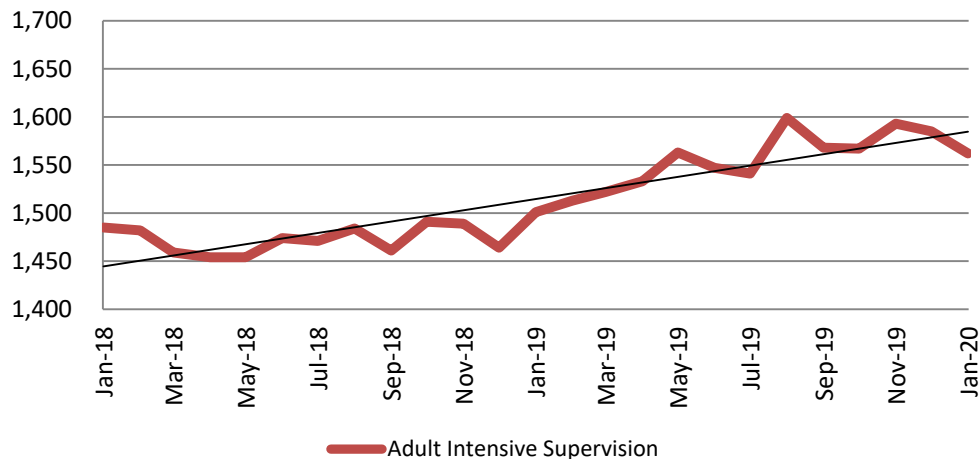
District Court Probation: Pre-Sentence Investigation January 2018 - present



January	2018	2019	2020
Carried Over	234	203	203
Assigned	208	178	179
Completed	161	167	177

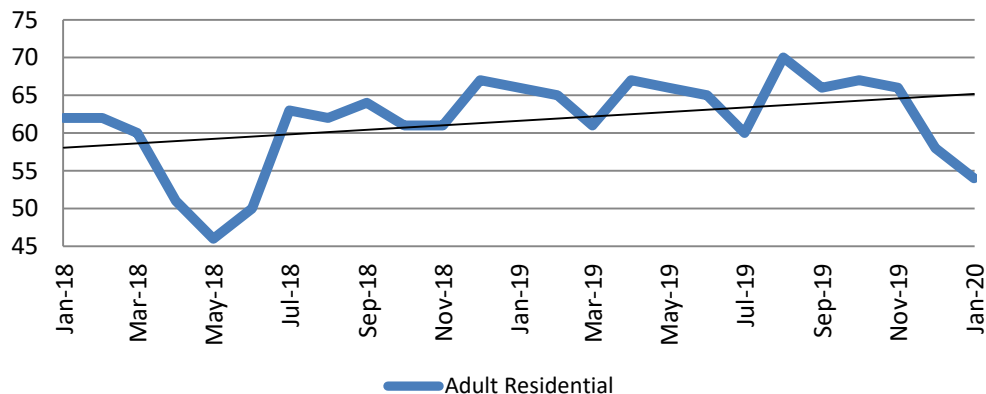
Community Corrections

**Adult Intensive Supervision Probation (AISP):
ADP January 2018- present**



Year	January	January YTD Avg.
2018	1,485	1,485
2019	1,501	1,501
2020	1,562	1,562

**Adult Residential: ADP
January 2018 - present**



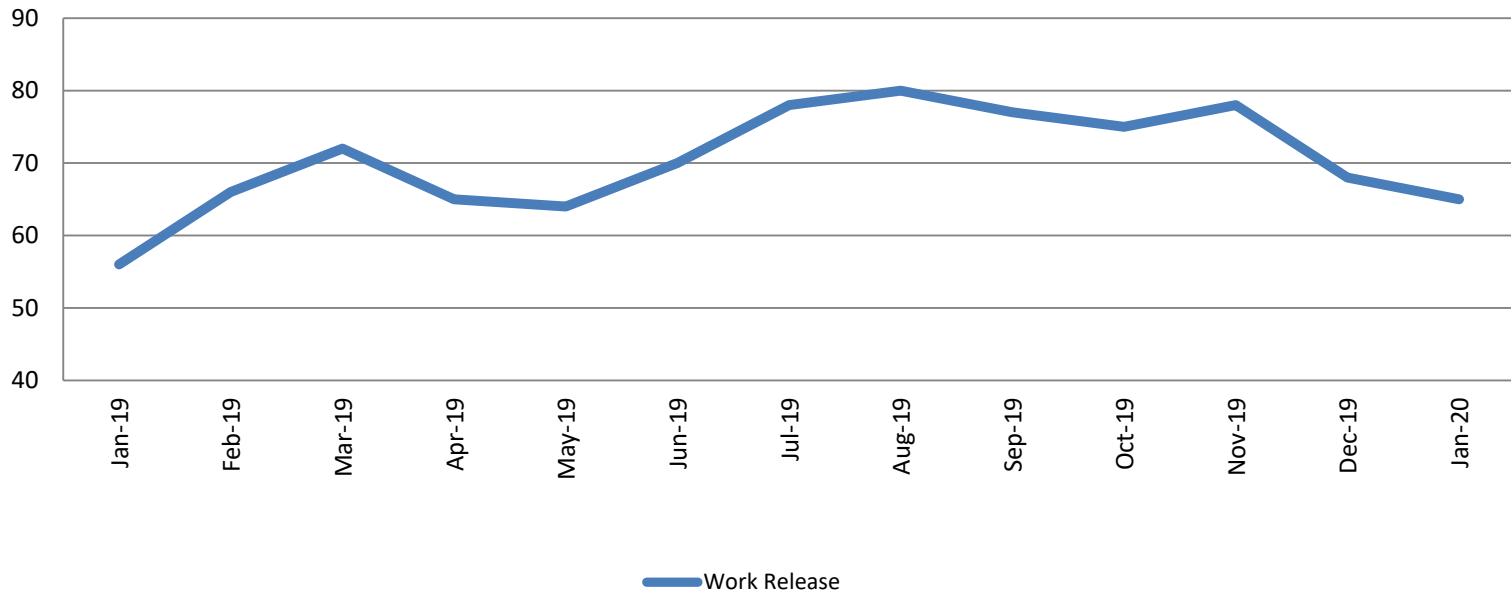
Year	January	January YTD Avg.
2018	62	62
2019	66	66
2020	54	54



Sedgwick County...
working for you

Community Corrections

Work Release: ADP January 2019 - present

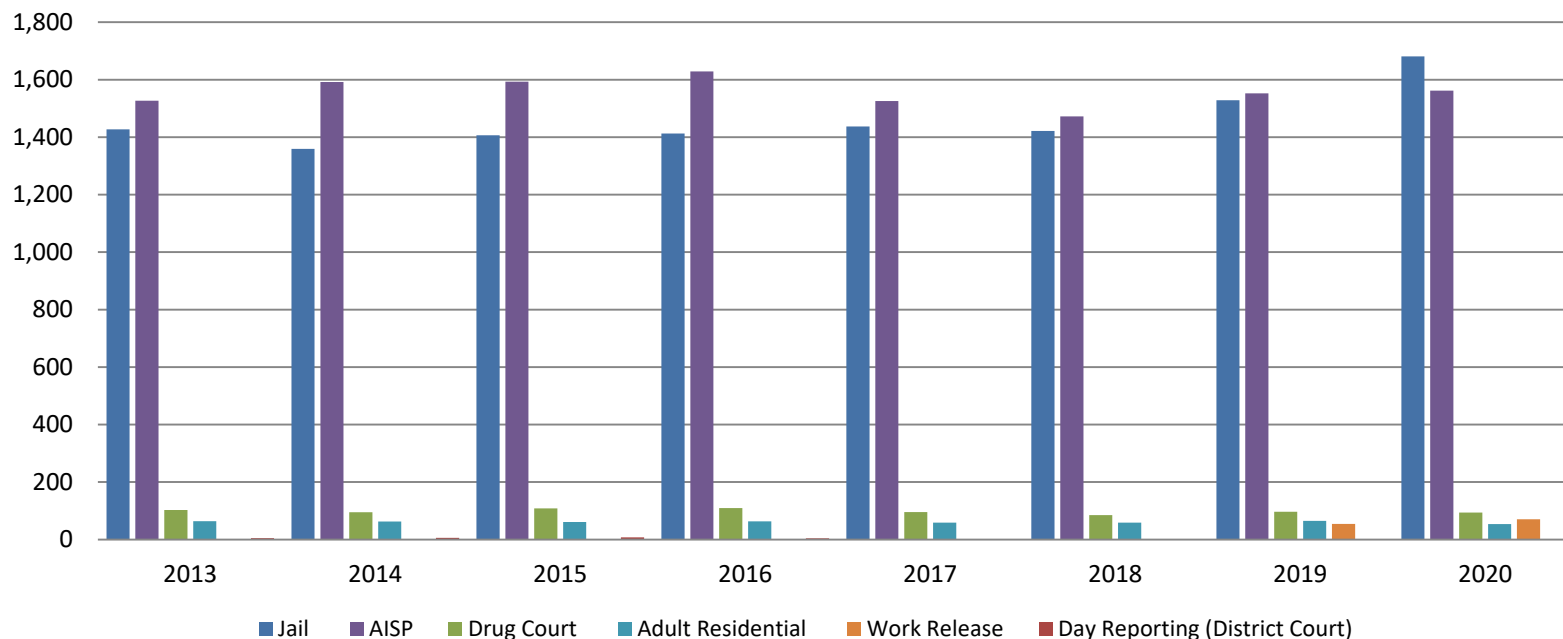


Month Year	Total	YTD Avg.
January 2019	56	56
January 2020	65	65



Correlation: Total & Sedgwick County Programs (Adult)

Total Annual ADP 2013 - present



2018

2019

2020

Jail

1,421

1,529

1,681

AISP

1,472

1,553

1,562

Drug Court

85

97

94

Adult Residential

59

65

54

Work Release

55

71

65

Day Reporting (DC)

0

0

0

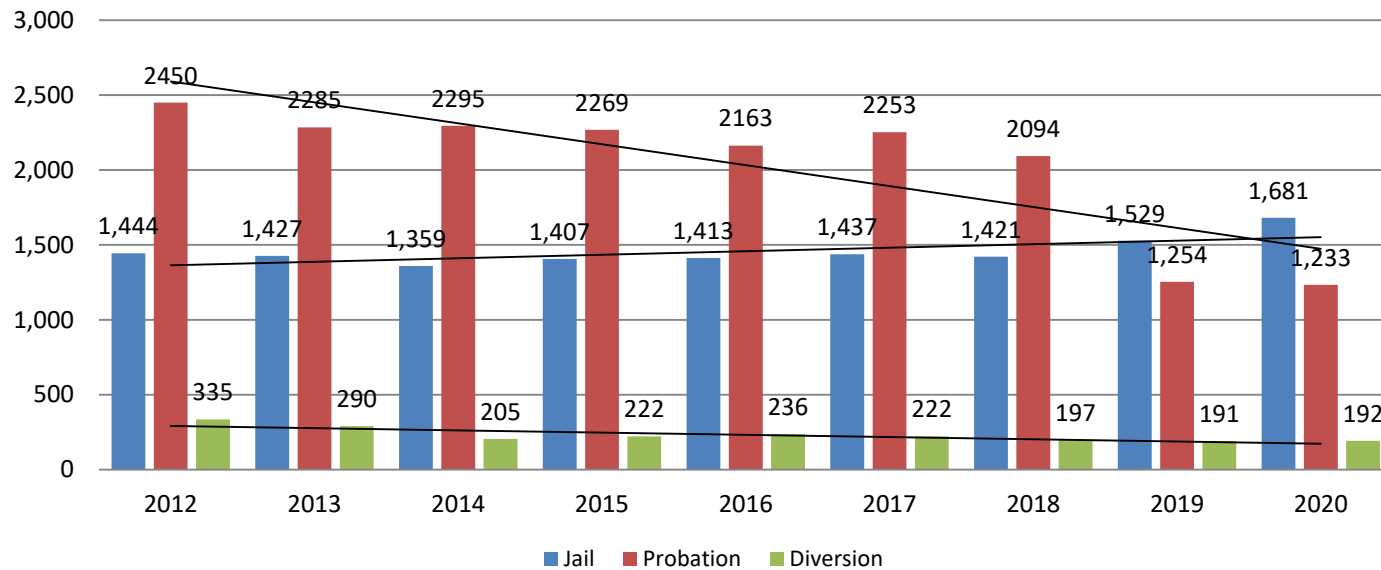


Sedgwick County...
working for you

Jail includes individuals in booking, detention, work release and out-of county (combined)
(data obtained from detention facility, SG Dept. of Corrections, Pretrial Services, & CoW)

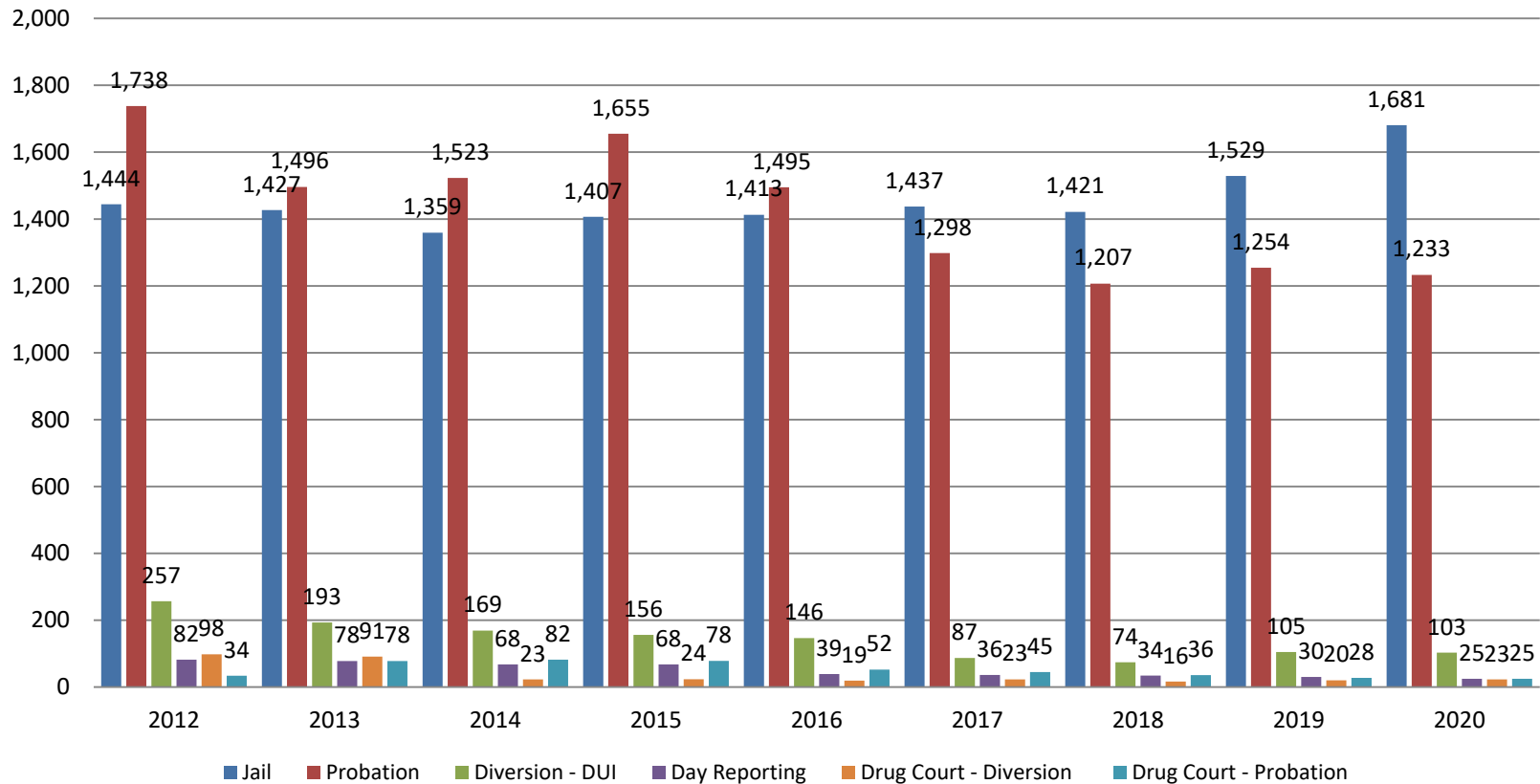
Correlation: Total & District Court Programs

Total Annual ADP: 2012 - present



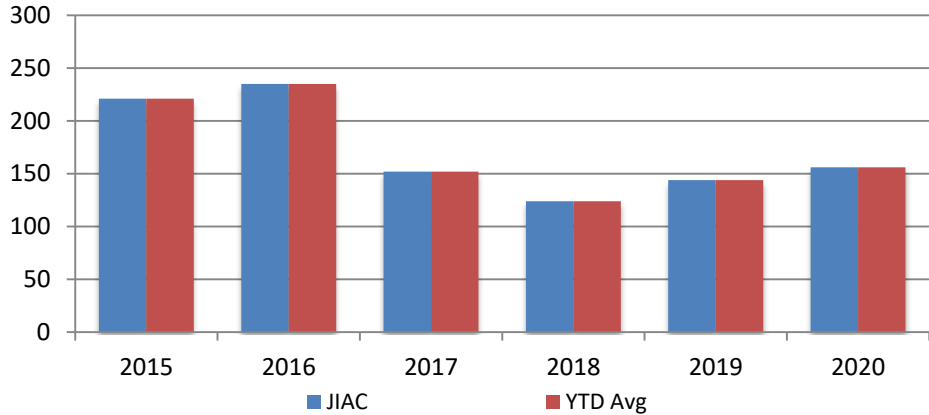
Correlation: Total & City of Wichita / Municipal Court Programs

Total Annual ADP: 2012 - present



Juvenile

JIAC Intakes
January 2015 - present

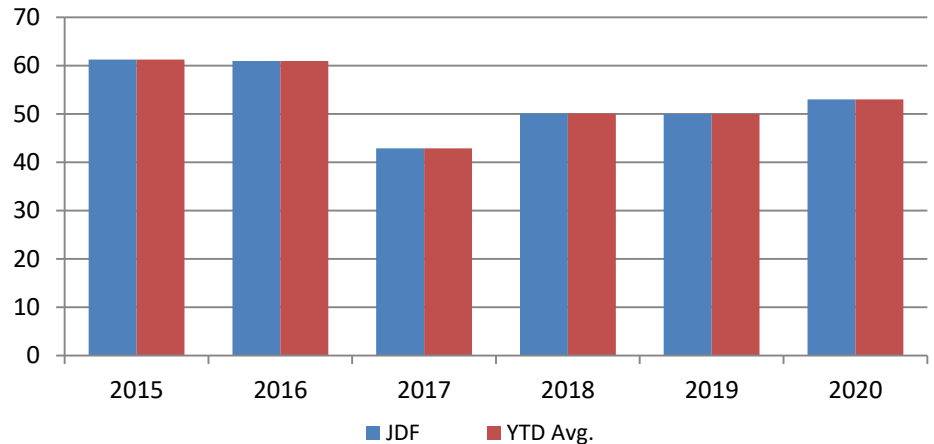


Year	January	January YTD Avg.
2015	221	221
2016	235	235
2017	152	152
2018	124	124
2019	144	144
2020	156	156

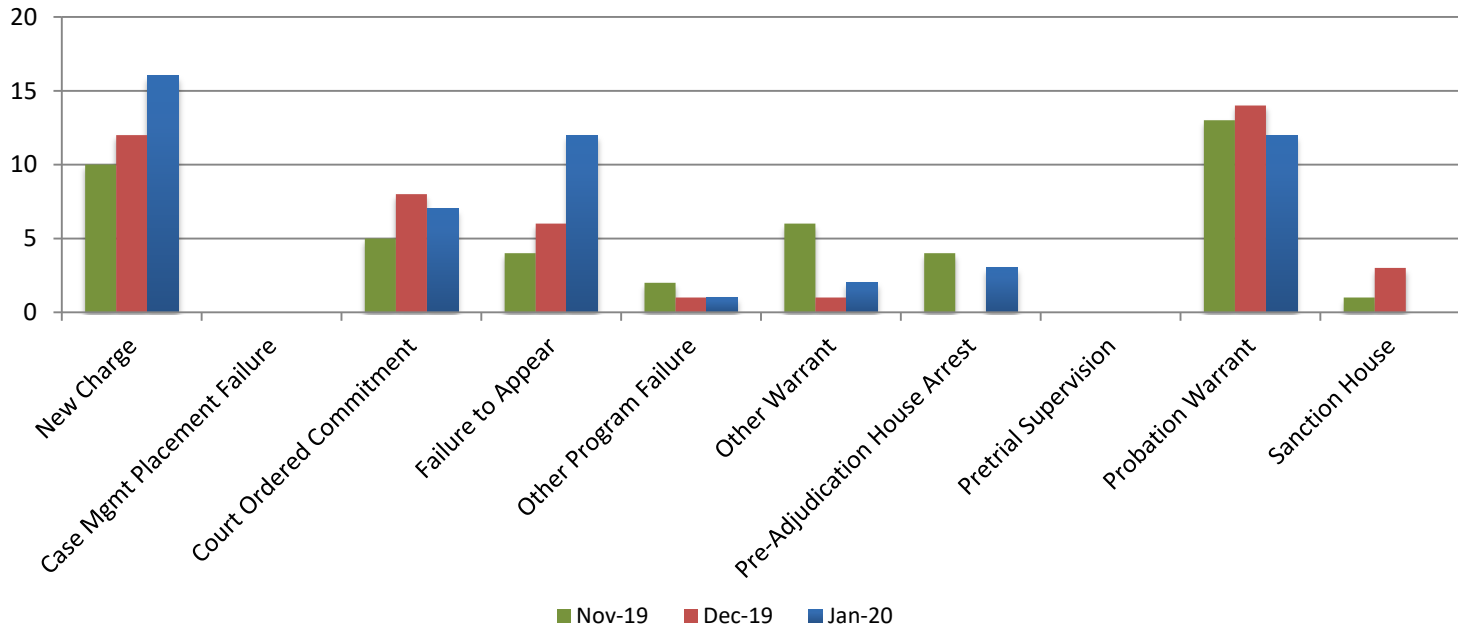
Year **January** **January YTD Avg.**

2015	61	61
2016	61	61
2017	43	43
2018	50	50
2019	50	50
2020	53	53

JDF ADP
January 2015 - present



Reason for JDF Admits



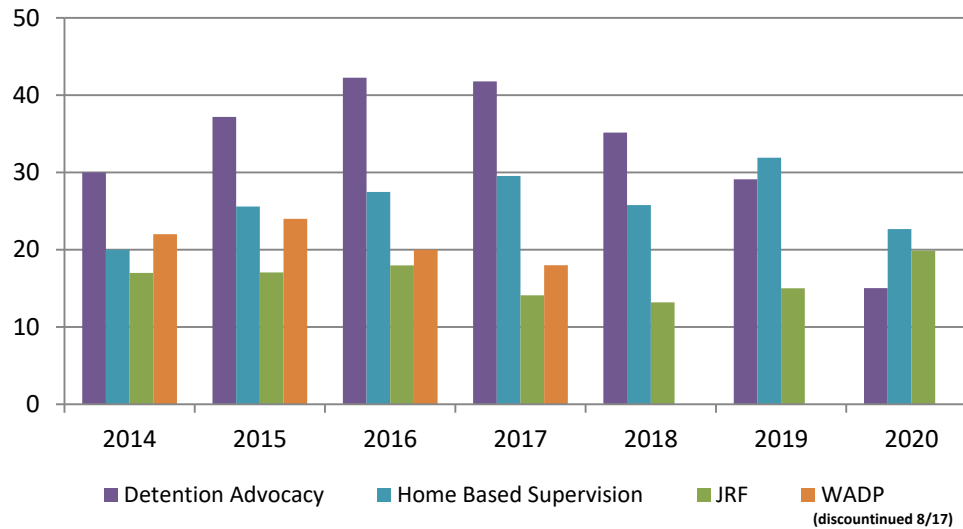
Reason for JDF Admits

Reason	January 2019	January 2020
New Charges	11	16
Case Management Placement Failures	0	0
Court Ordered Commitment	4	7
Failure to Appear	5	12
Other Program Failure	7	1
Other Warrant	4	2
Pre-Adjudication House Arrest	4	3
Pretrial Supervision	1	0
Probation Warrant	13	12
Sanction House	4	0



Juvenile Detention Alternatives

ADP: January 2014 - present



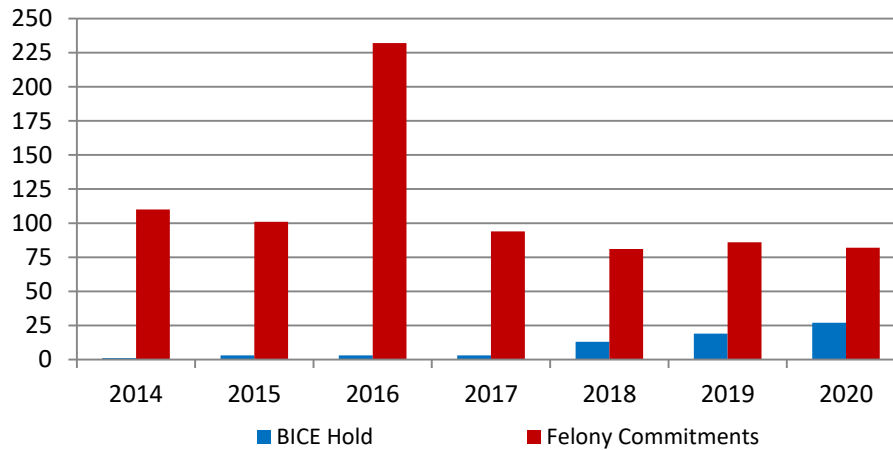
Juvenile Detention Services

January ADP	2017	2018	2019	2020
Juvenile Detention Facility	43	50	50	53
Juvenile Residential Facility	14	13	15	20
Home Based Supervision	30	26	32	23
Detention Advocacy Case Management Services	42	35	29	15
Weekend Alternative Detention Program (total)	18	0	N/A	N/A

January YTD AVERAGE	2017	2018	2019	2020
Juvenile Detention Facility	43	50	50	53
Juvenile Residential Facility	14	13	15	20
Home Based Supervision	30	26	32	23
Detention Advocacy Case Management Services	42	35	29	15
Weekend Alternative Detention Program	18	0	N/A	N/A

Monthly Jail Snapshot: January 31, 2020

Snapshots January 2014 - present

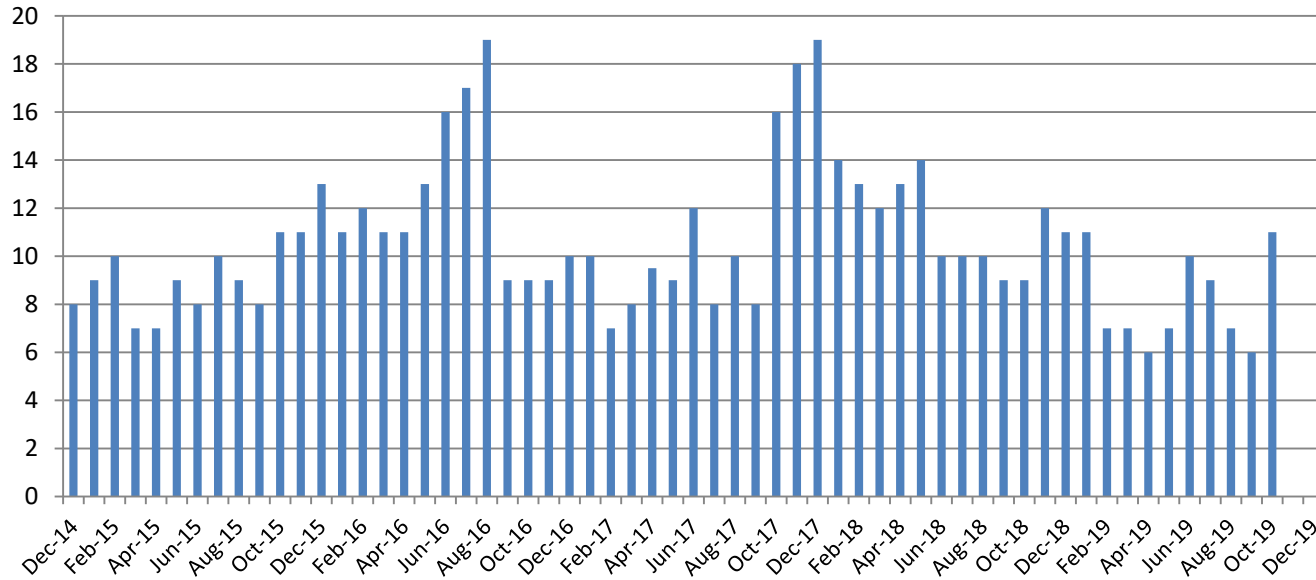


BICE Hold	2014	2015	2016	2017	2018	2019	2020
January	1	3	3	3	13	19	27

Felony Commitments	2014	2015	2016	2017	2018	2019	2020
January	110	101	232	94	81	86	82



Journal Entry Completion (Average Days) December 2014 - present



December	2014	2015	2016	2017	2018	2019
Avg. Days	8	13	10	19	11	ND
YTD Avg.	7	9	12	11	11.42	ND

