

Criminal Justice Coordinating Council

Population Report & Program Trends

August 2022

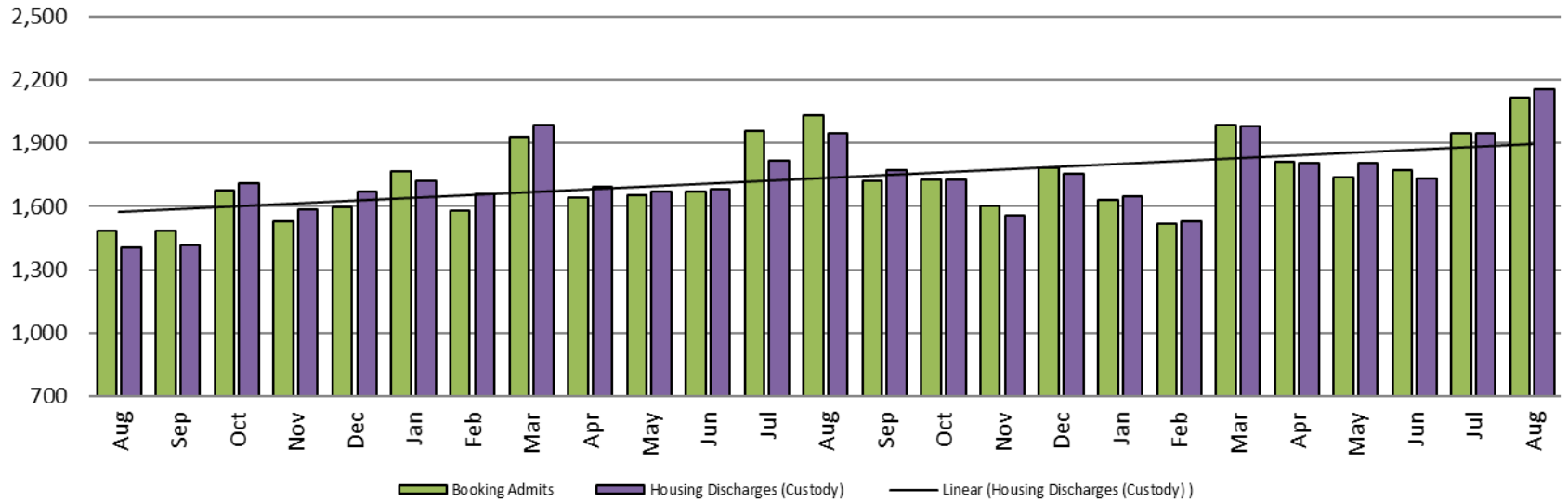


Sedgwick County...
working for you

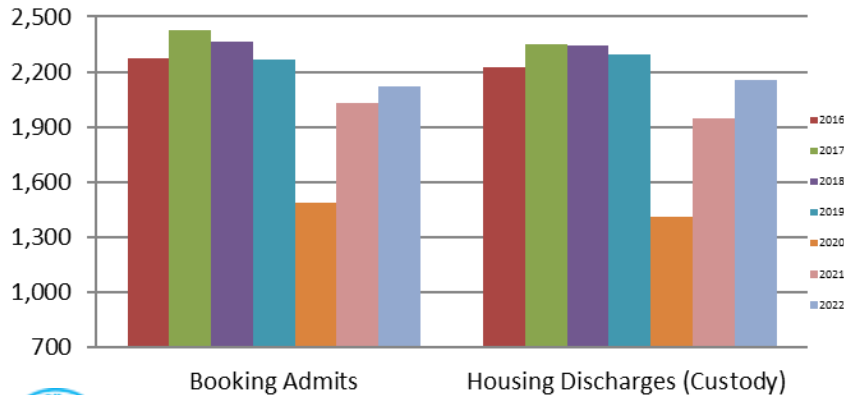
Detention Facility

Booking Admits & Housing Discharges from Custody

August 2020 - present

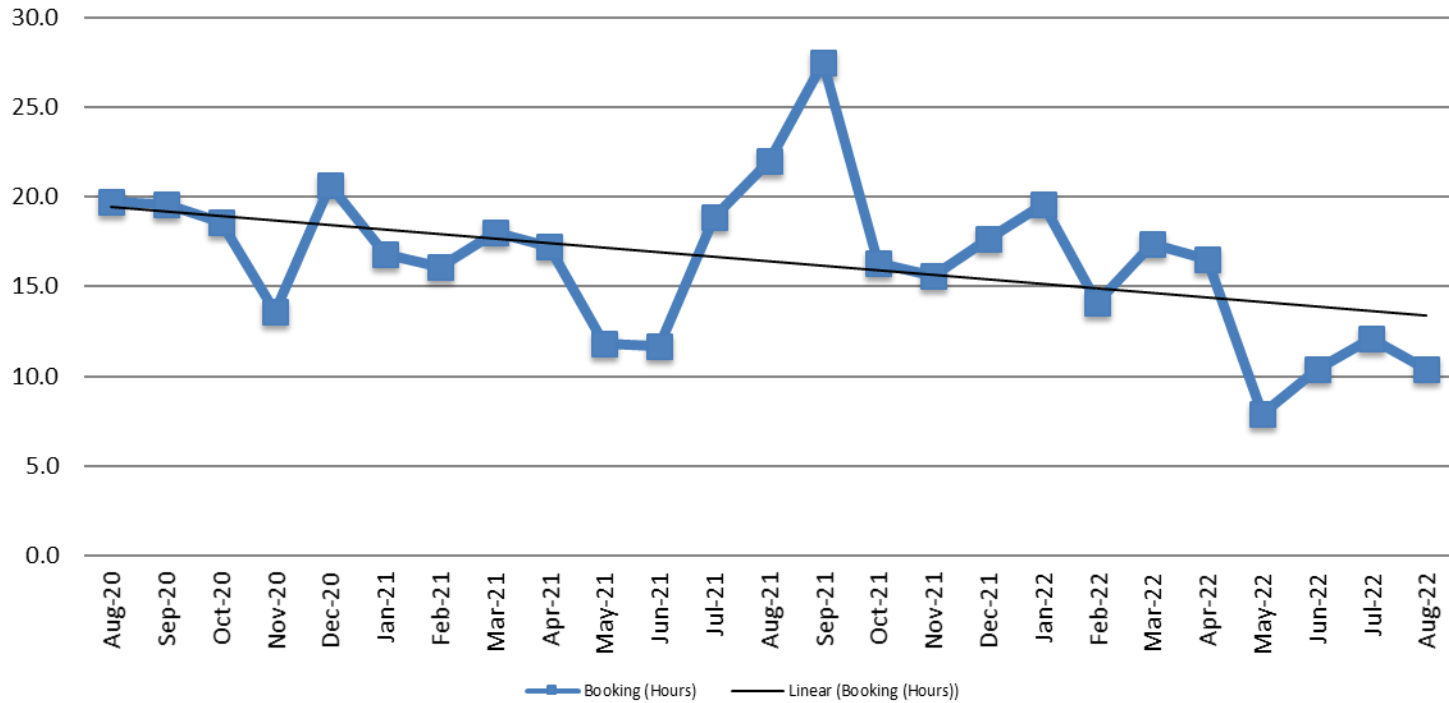


Bookings Year over Year: Month of August



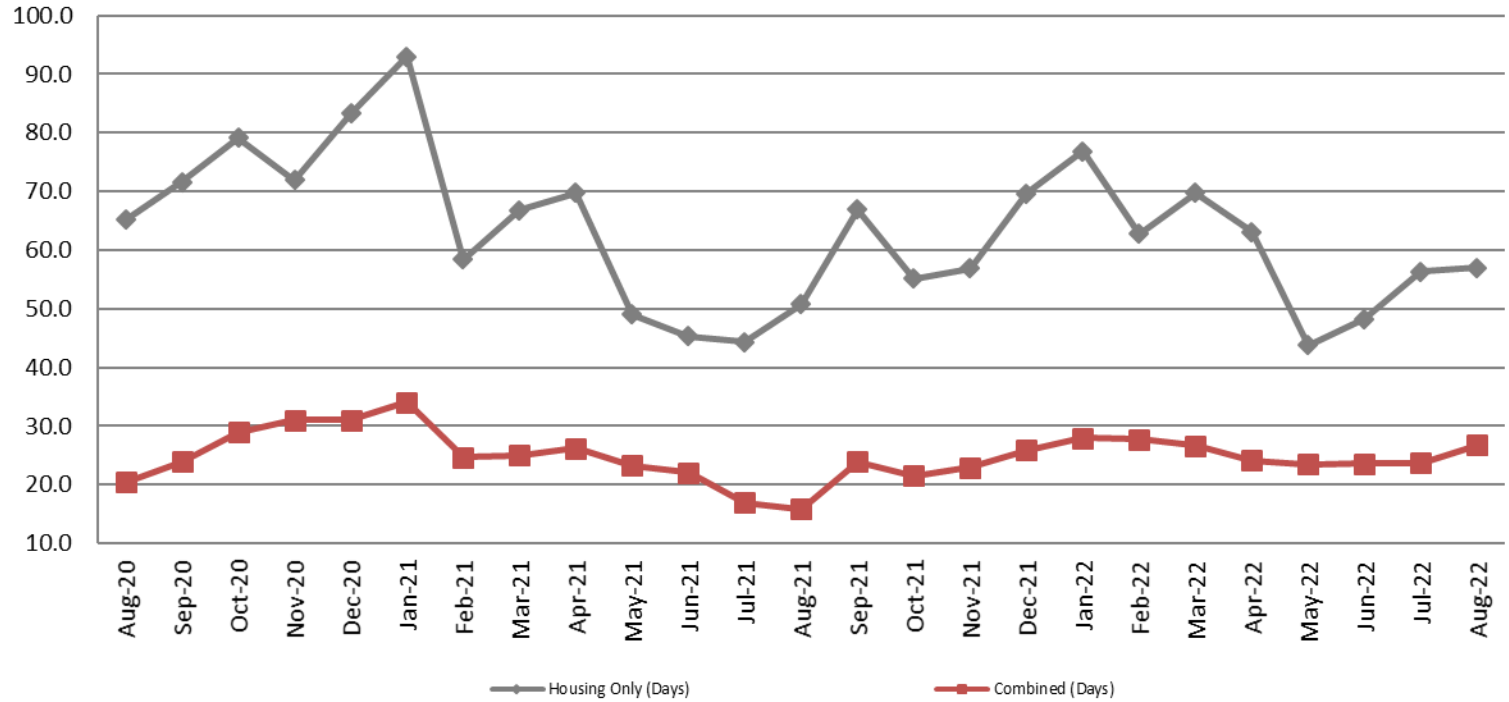
Bookings August	Housing Discharges August
2020: 1,486	2020: 1,408
2021: 2,029	2021: 1,948
2022: 2,117	2022: 2,155

Average Length of Stay: Booking (Hours) August 2020 - present



August	August YTD Average
2020: 19.7	2020: 14.0
2021: 22.0	2021: 16.8
2022: 10.36	2022: 13.5

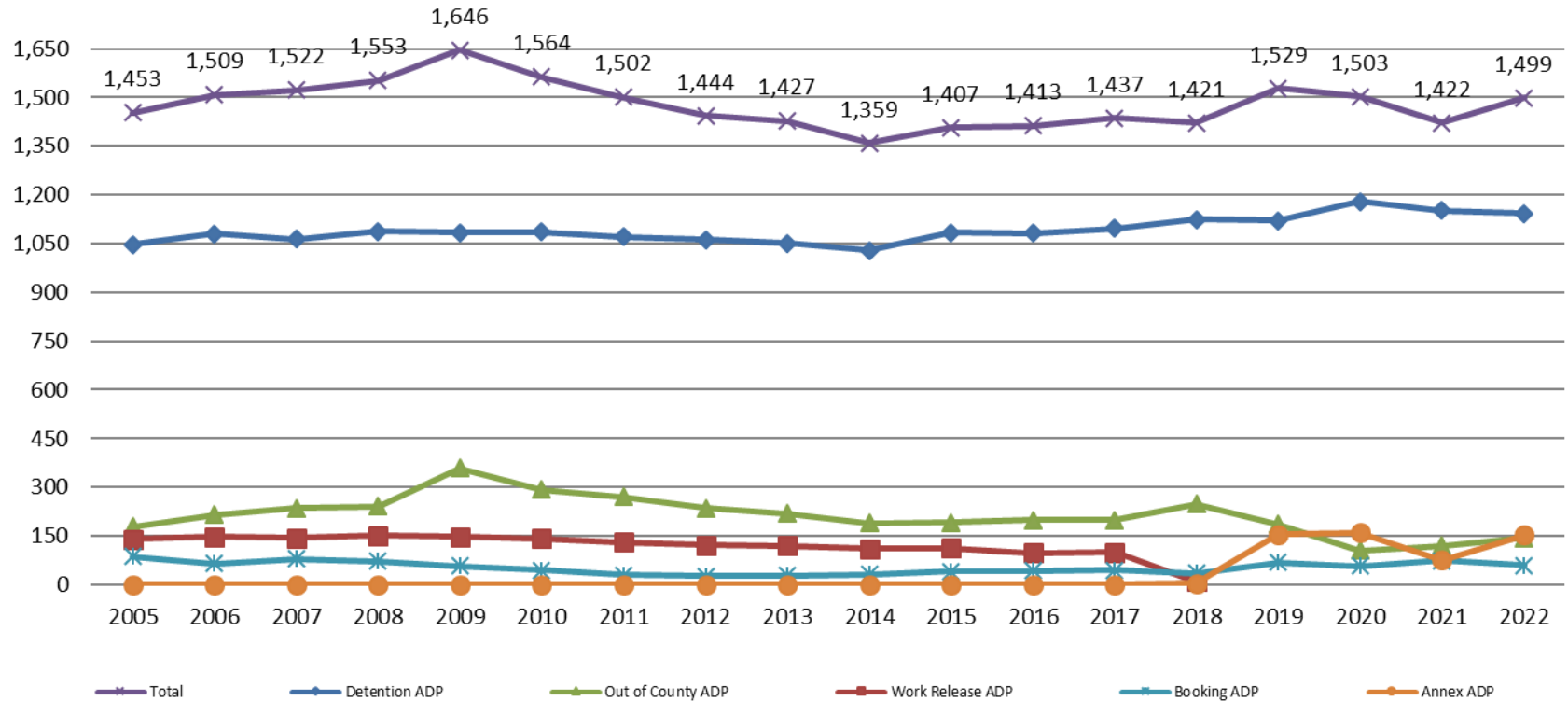
Average Length of Stay: Housing & Combined (Days) August 2020 - present



Month Year	Housing Only	Housing YTD AVG	Combined Days	Combined YTD AVG
August 2020	65.1	54.8	20.4	23.2
August 2021	50.8	59.7	15.8	23.5
August 2022	56.96	59.7	26.75	25.5

Jail: Annual Average Daily Population (ADP)

**TRENDS: Booking, Detention, Work Release, & Out of County Annual ADP:
2005 - present**

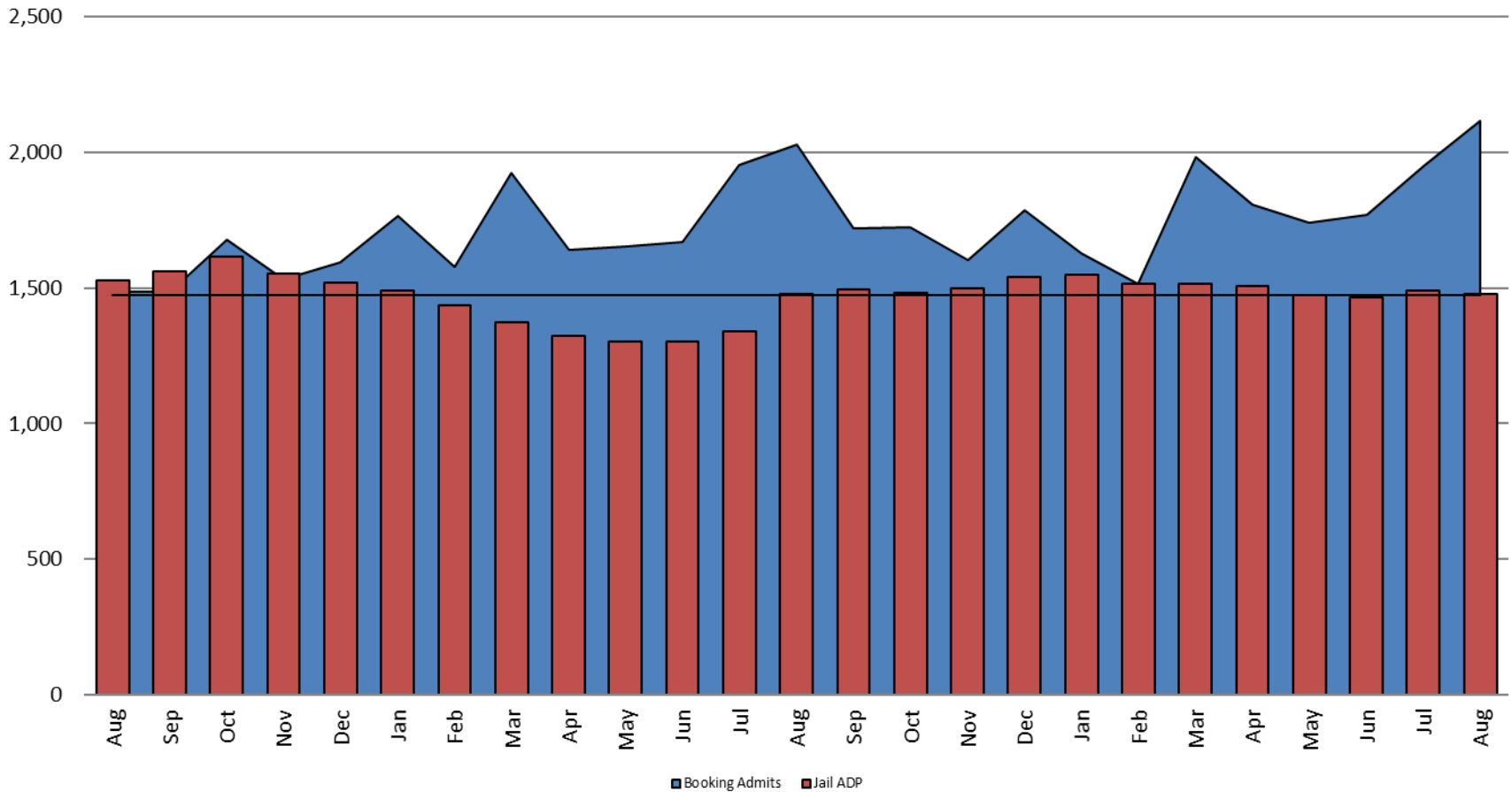


TOTAL MONTHLY ADP: JAIL (Booking, Detention Facility, Annex, & Out of County) August 2020 - present



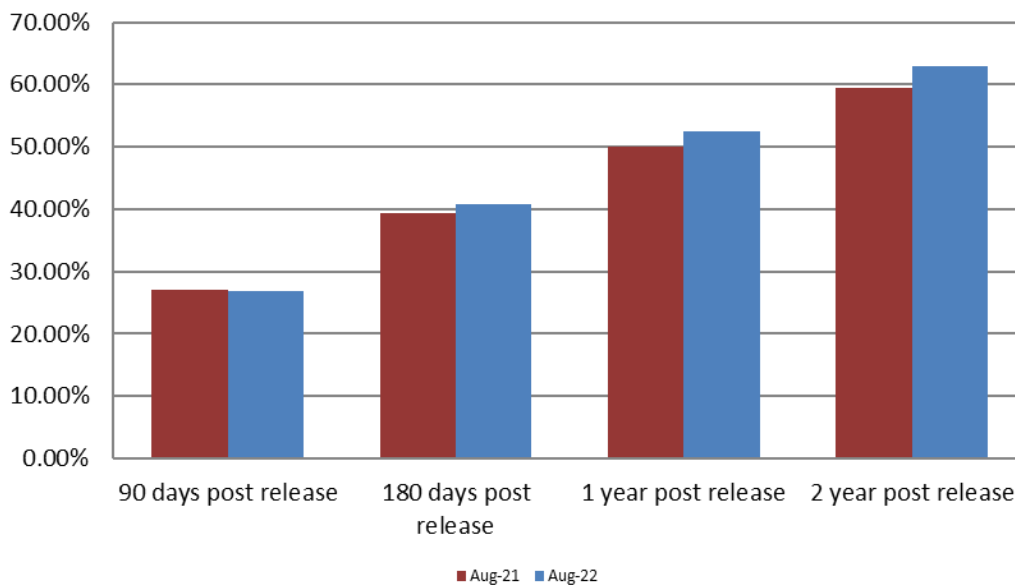
August 2020	August 2021	August 2022
1,527	1,479	1,477

Booking Admits & Total Monthly ADP (Jail): August 2020 - present



Jail includes individuals in booking, detention, work release and out-of county (combined)
(data obtained from detention facility)

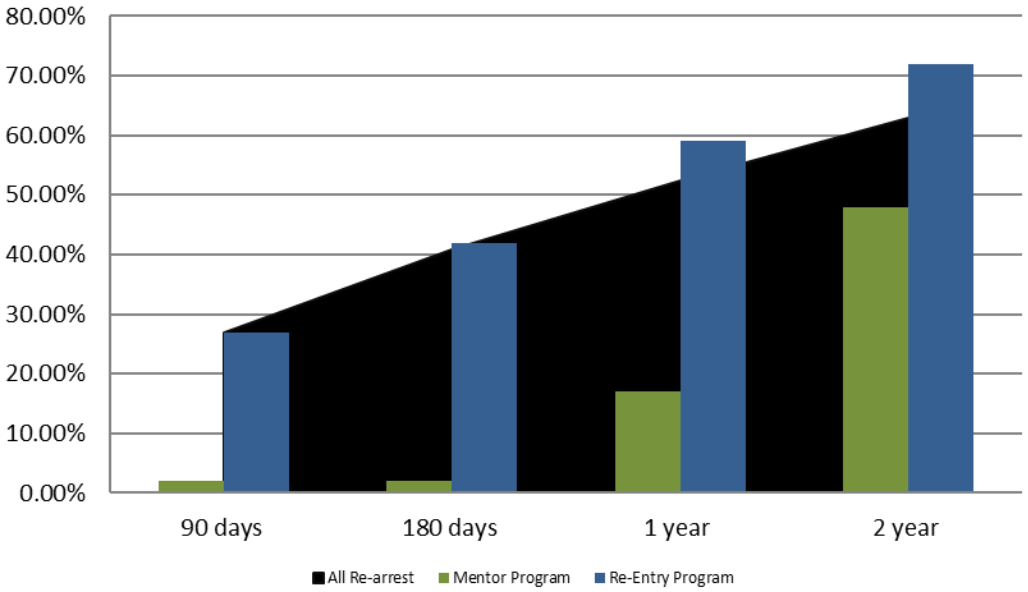
Percent of Released Inmates Rearrested August



Month Year	90 Days	180 Days	1 Year	2 Years
August 2021	27.11%	39.29%	49.92%	59.45%
August 2022	26.89%	40.82%	52.43%	63.03%

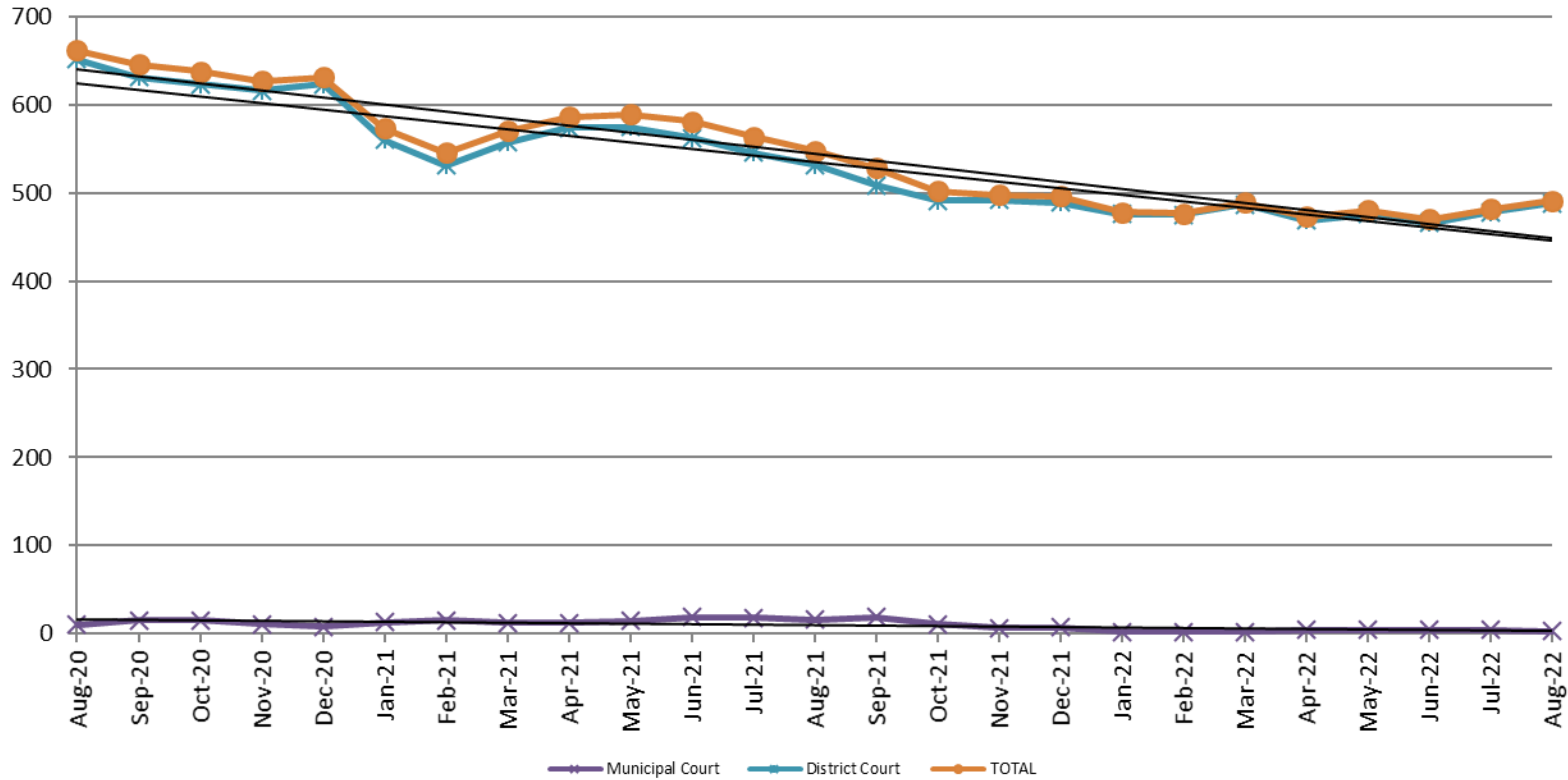


Recidivism by Programs August 2022



August 2022	90 Days	180 Days	1 year	2 years
All Re-arrests	26.89%	40.82%	52.43%	63.03%
Mentor Program	2%	2%	17%	48%
Re-Entry Program	27%	42%	59%	72%

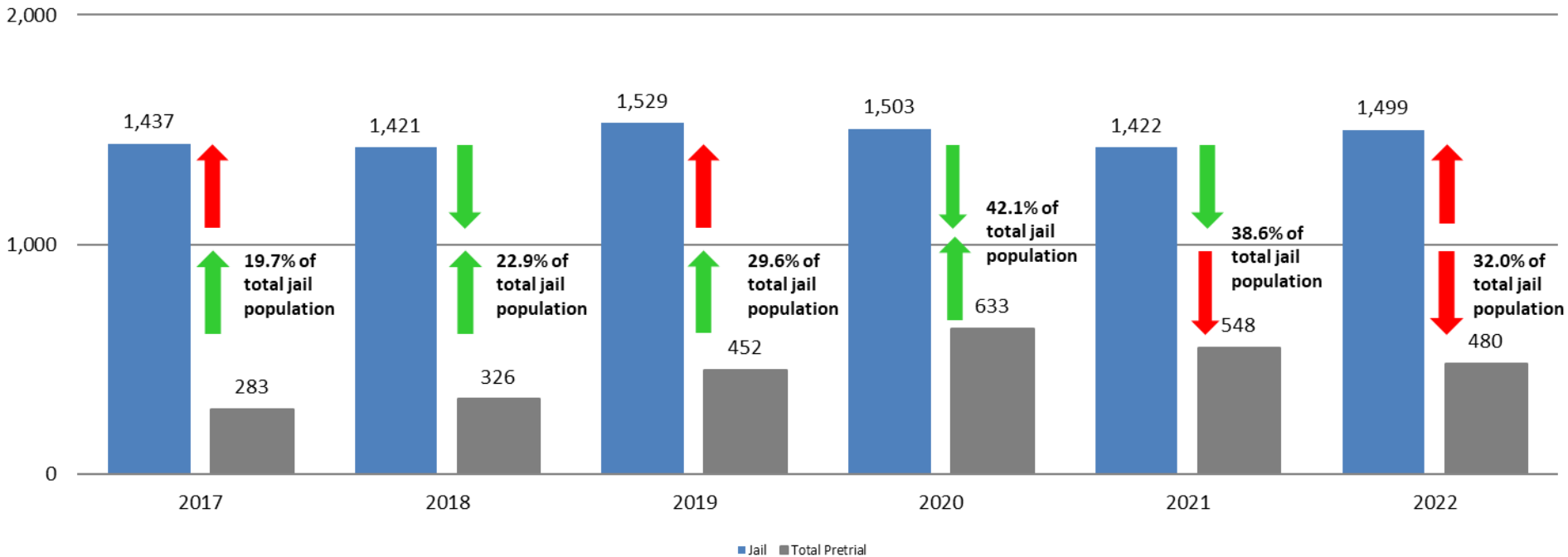
Pretrial Services Program (PSP) Monthly ADP: August 2020 - present



August	2020 ADP	2021 ADP	2022 ADP	2020 YTD Avg.	2021 YTD Avg.	2022 YTD Avg.
Muni. Court	10	16	3	5	14.9	3.1
Dist. Court	652	532	488	626	554.6	476.9
Total	662	548	491	631	569.6	480.0

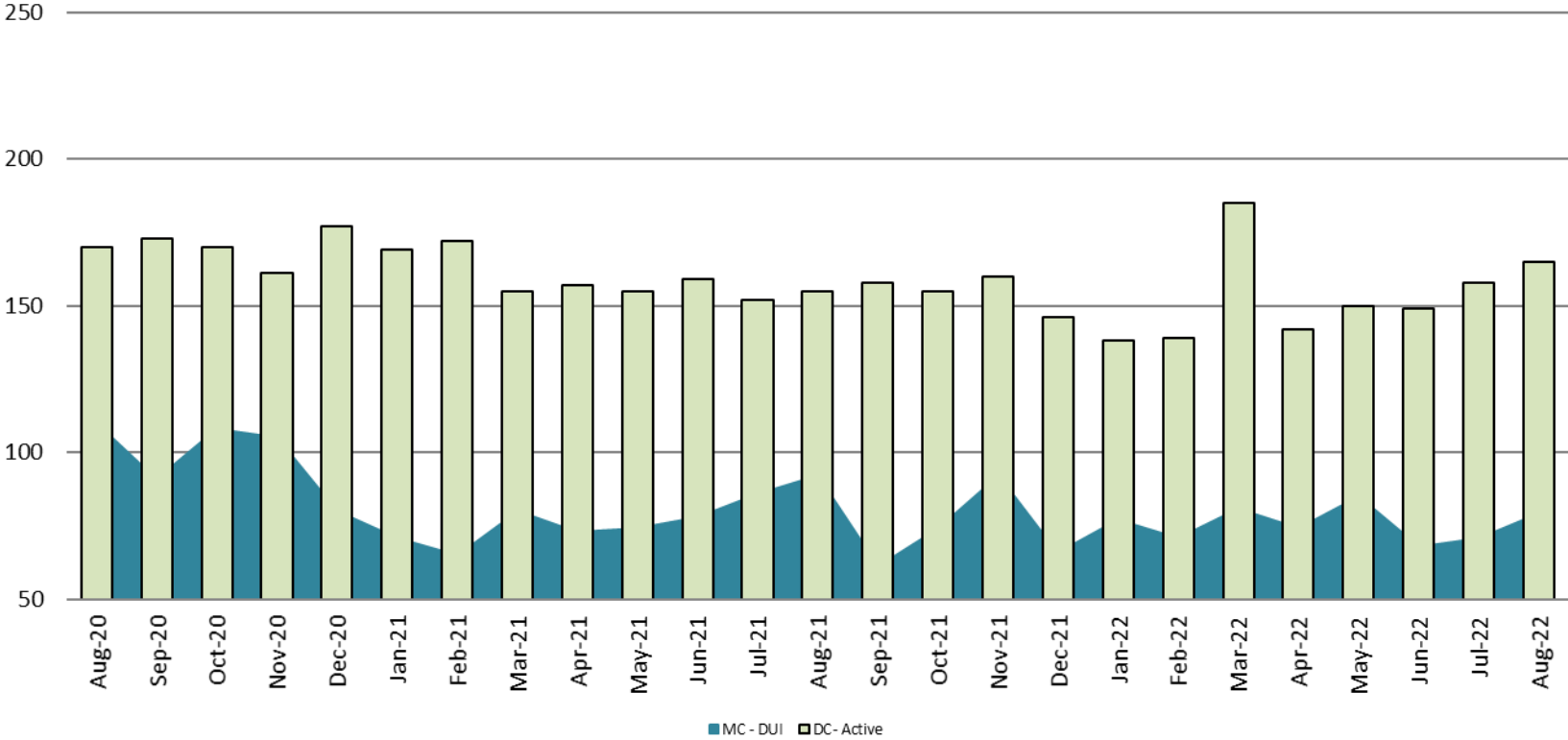
Correlation: Total & PSP

Total Annual ADP: 2017 - present



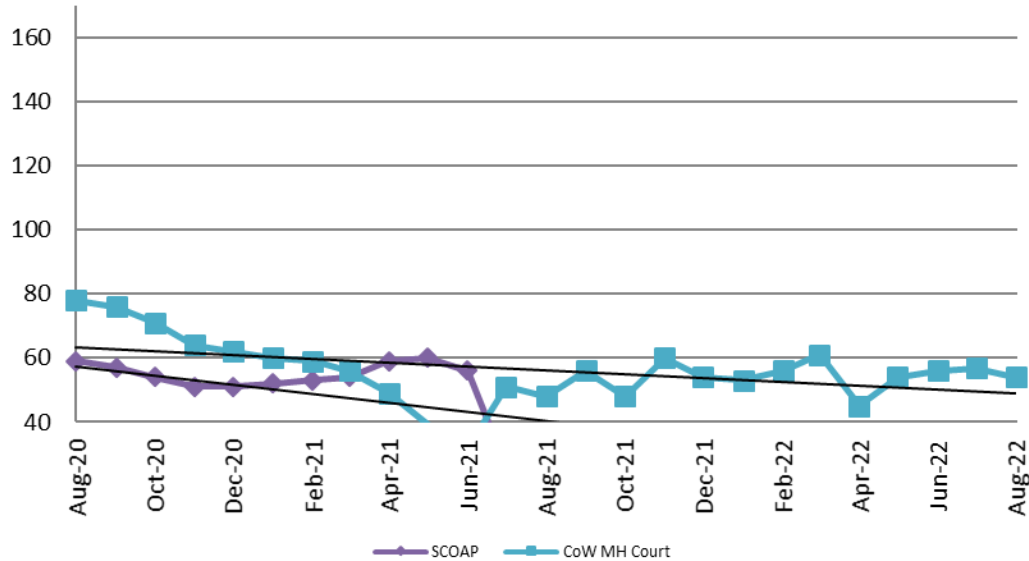
Diversion - Active Caseload

August 2020 - present

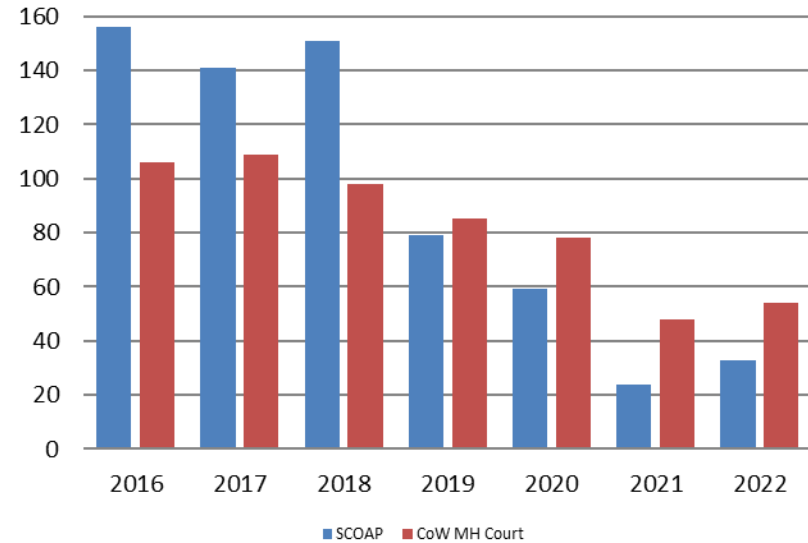


August	2020	2021	2022	2020 YTD Avg.	2021 YTD Avg.	2022 YTD Avg.
Muni. Court- DUI	110	92	79	94	77	79
Dist. Court- Active	170	155	165	179	159	153

Mental Health - ADP August 2020 - present

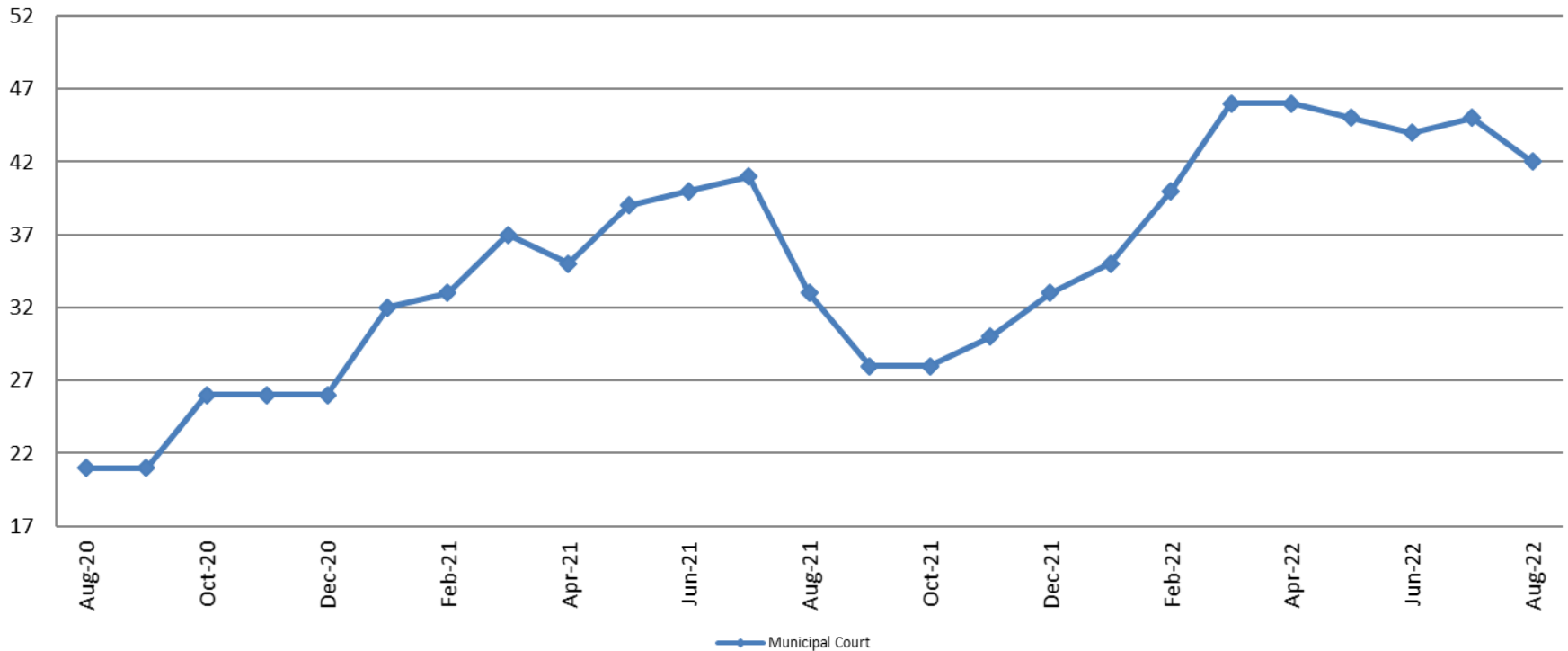


Mental Health ADP Year over Year - August



August	2020 ADP	2021 ADP	2022 ADP	2020 YTD Avg.	2021 YTD Avg.	2022 YTD Avg.
SCOAP	59	24	33	66	48	31
MH Court	78	48	54	76	49	54

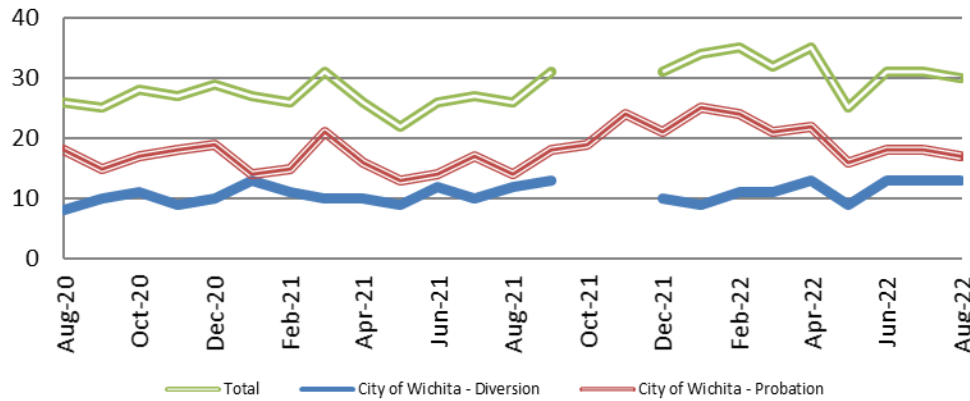
Day Reporting - Active Caseload August 2020 - present



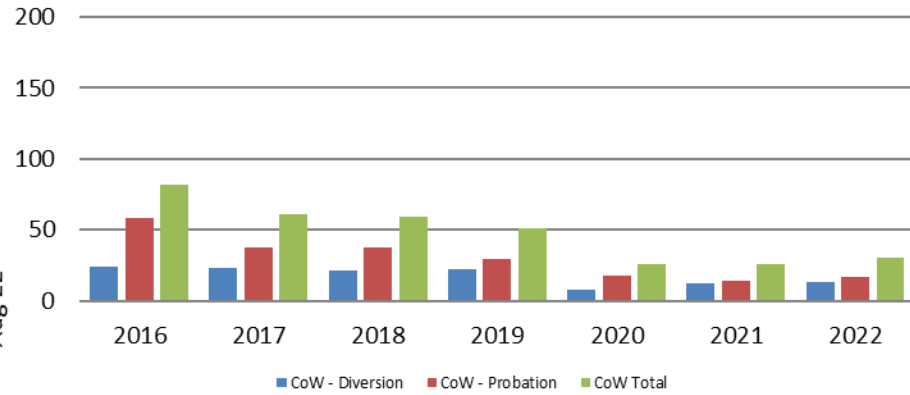
August	2017	2018	2019	2020	2021	2022
Muni. Court	40	33	31	21	33	42
Muni. Court YTD Avg.	35	35	30	21	36	43



Drug Court - City of Wichita ADP: August 2020 - present



Drug Court- City of Wichita Year over Year - August



August	2020	2021	2022
Diversion	8	12	13
Probation	18	14	17
Total	26	26	30



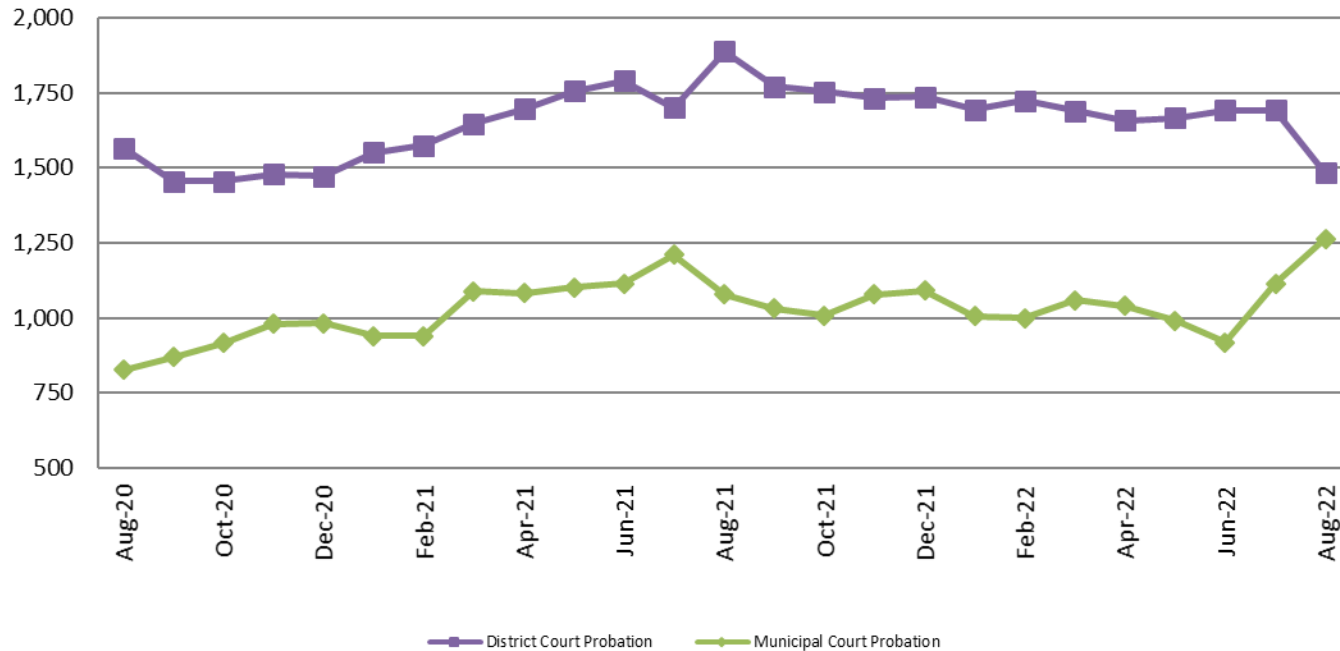
Drug Court - Sedgwick County ADP: August 2020 - present



	August	2020	2021	2022
Sedg. Co. ADP		80	73	65
YTD Avg.		94	77	66



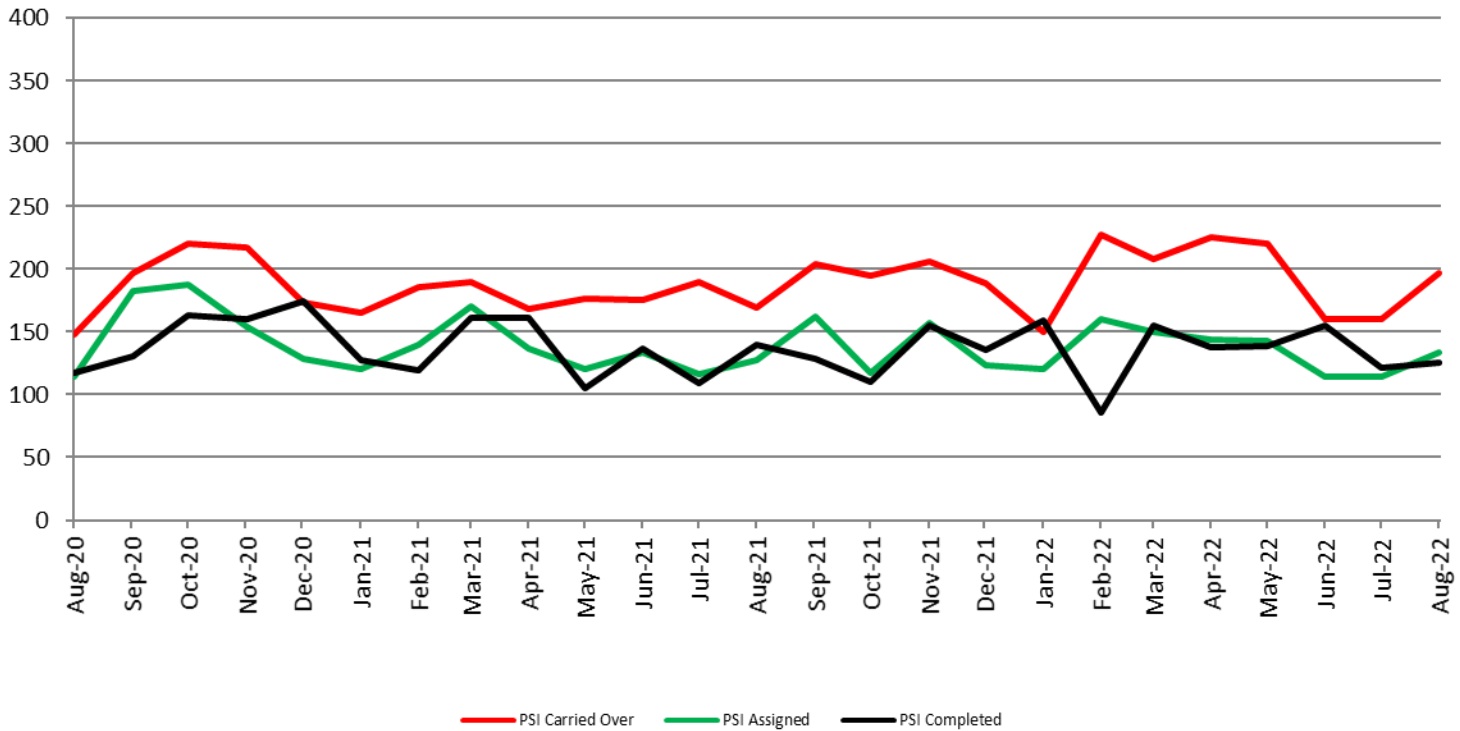
Probation - Active Caseloads August 2020 - present



August	2020	2021	2022	2020 YTD Avg.	2021 YTD Avg.	2022 YTD Avg.
Dist. Court Probation	1,567	1,889	1,484	1,629	1,701	1,662
Muni. Court Probation	828	1,078	1,263	924	1,070	1,049



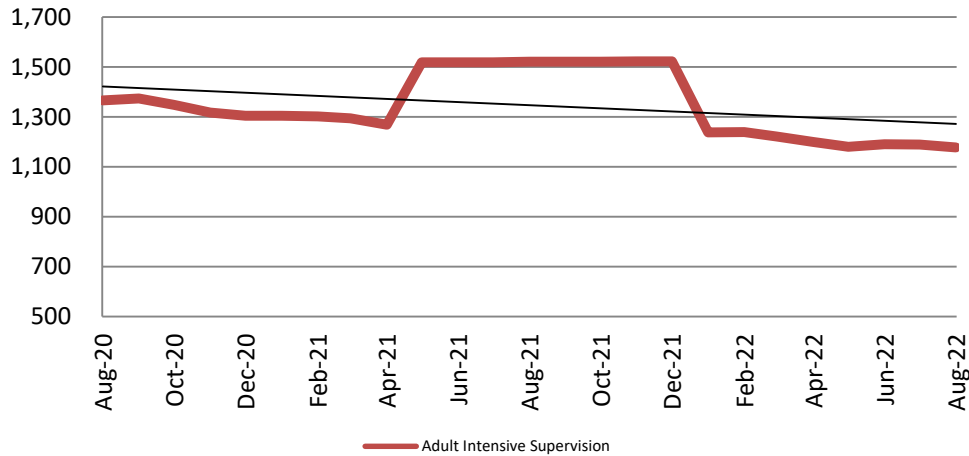
District Court Probation: Pre-Sentence Investigation August 2020 - present



August	2020	2021	2022
Carried Over	148	169	197
Assigned	114	127	134
Completed	117	140	125

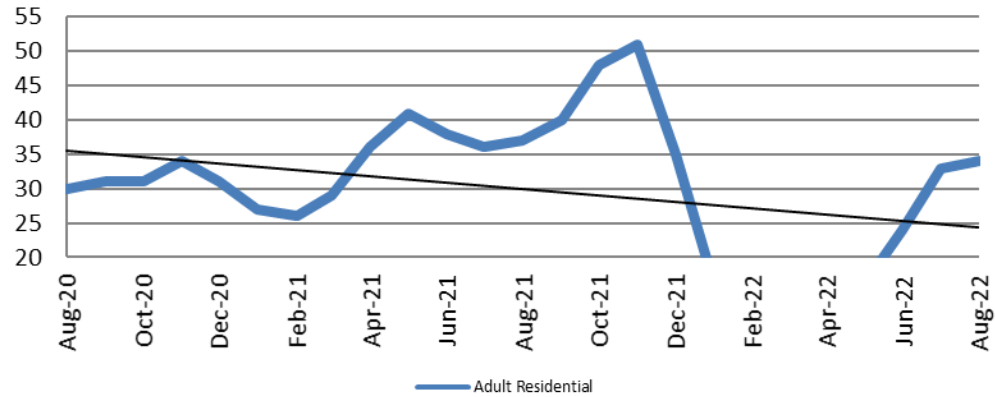
Community Corrections

**Adult Intensive Supervision Probation (AISP):
ADP August 2020 - present**



Year	August	August YTD Avg.
2020	1,366	1,474
2021	1,521	1,519
2022	1,178	1,204

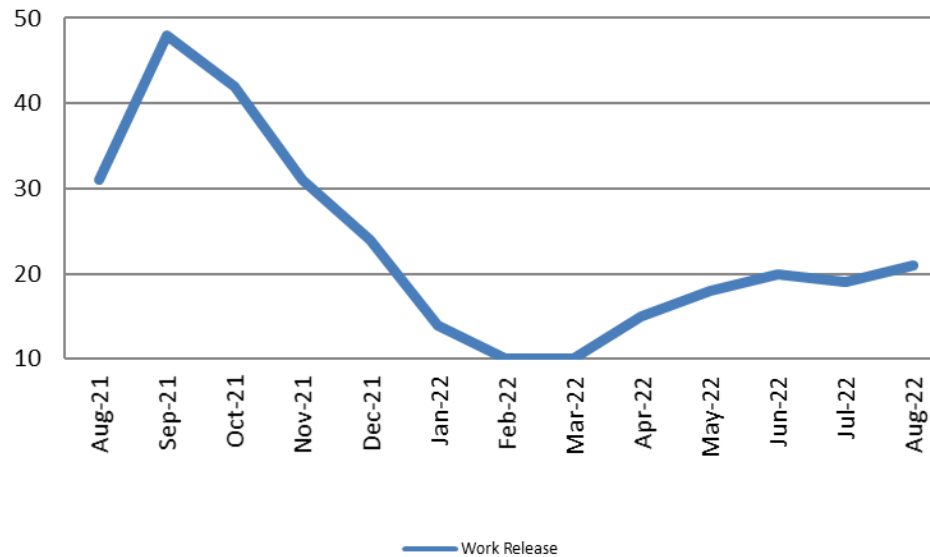
**Adult Residential: ADP
August 2020 - present**



Year	August	August YTD Avg.
2020	30	39
2021	37	34
2022	34	19

Community Corrections

Work Release: ADP August 2021 - present

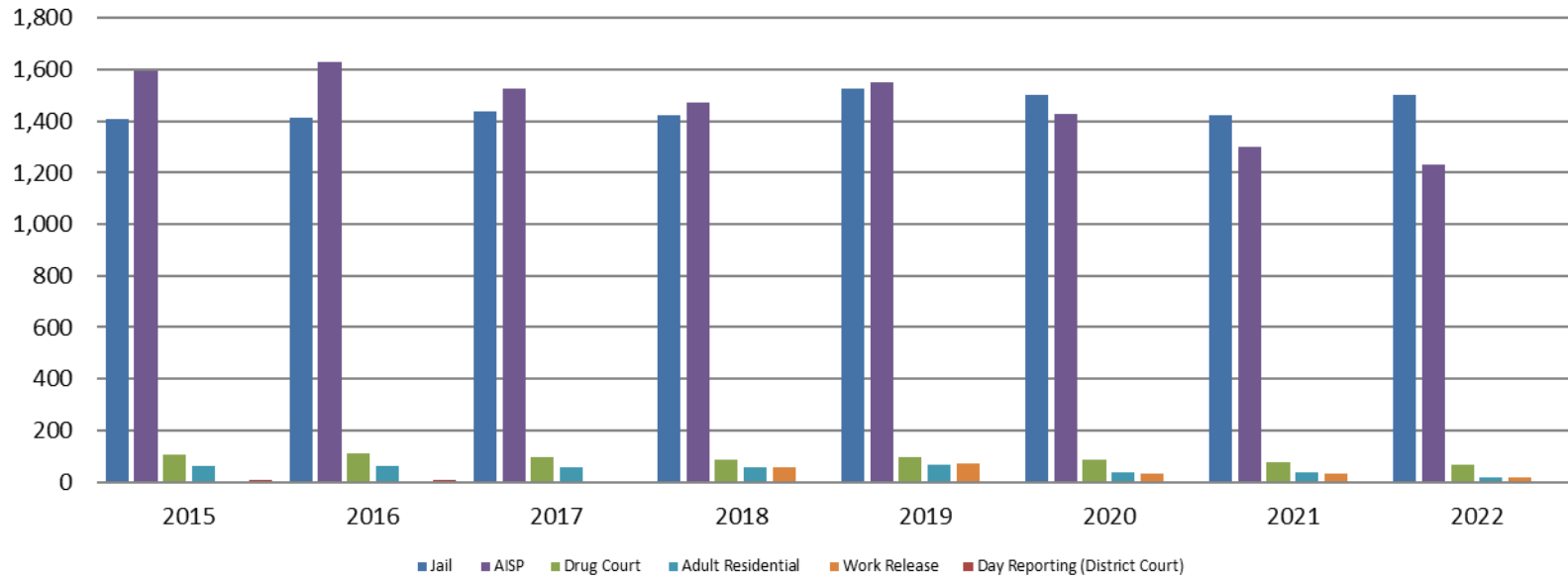


Month Year	Total	YTD Avg.
August 2021	31	27
August 2022	21	16



Correlation: Total & Sedgwick County Programs (Adult)

Total Annual ADP 2015 - present

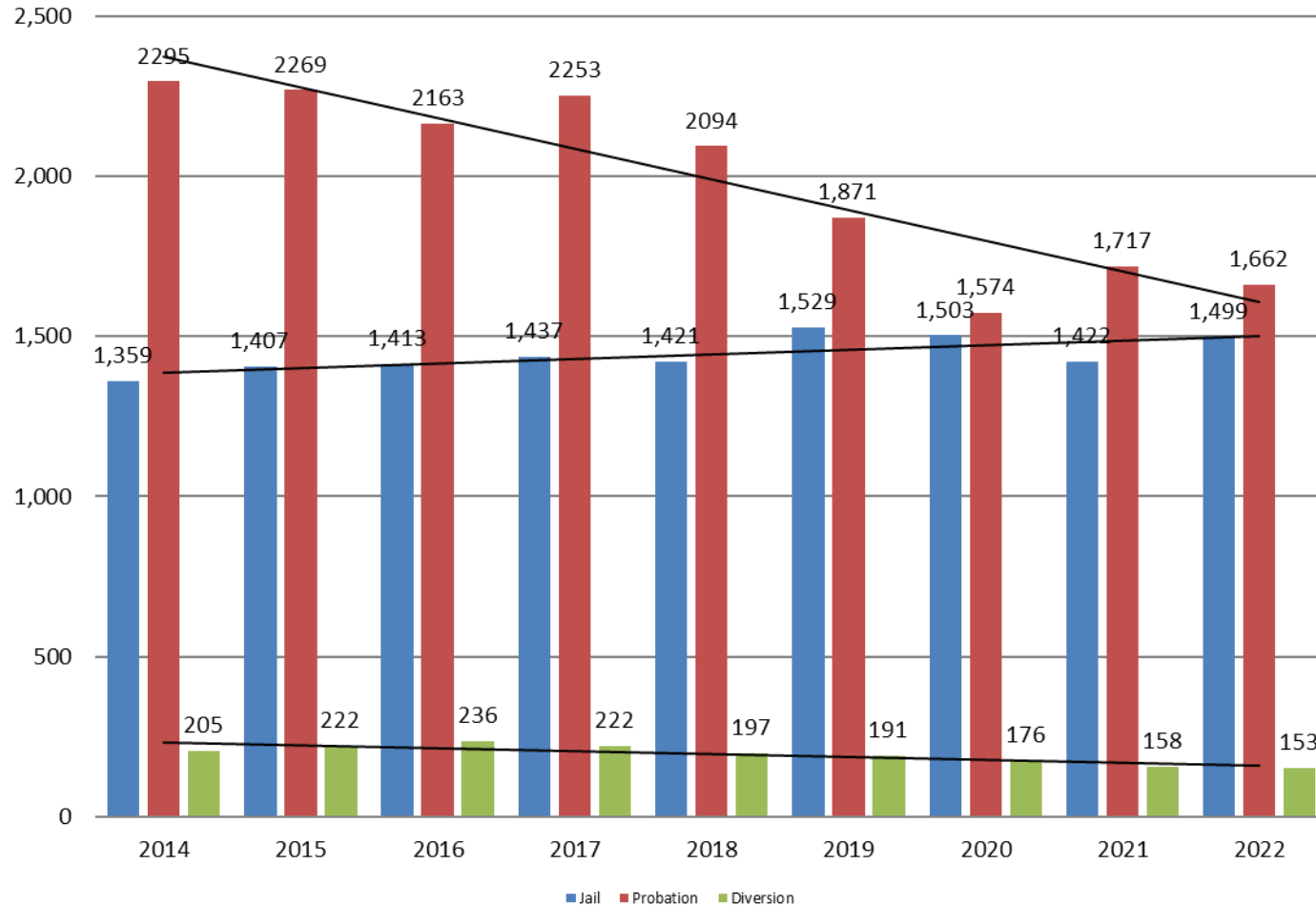


	2020	2021	2022
Jail	1,503	1,422	1,499
AISP	1,428	1,300	1,233
Drug Court	88	75	66
Adult Residential	36	37	19
Work Release	30	30	16
Day Reporting (DC)	0	0	0



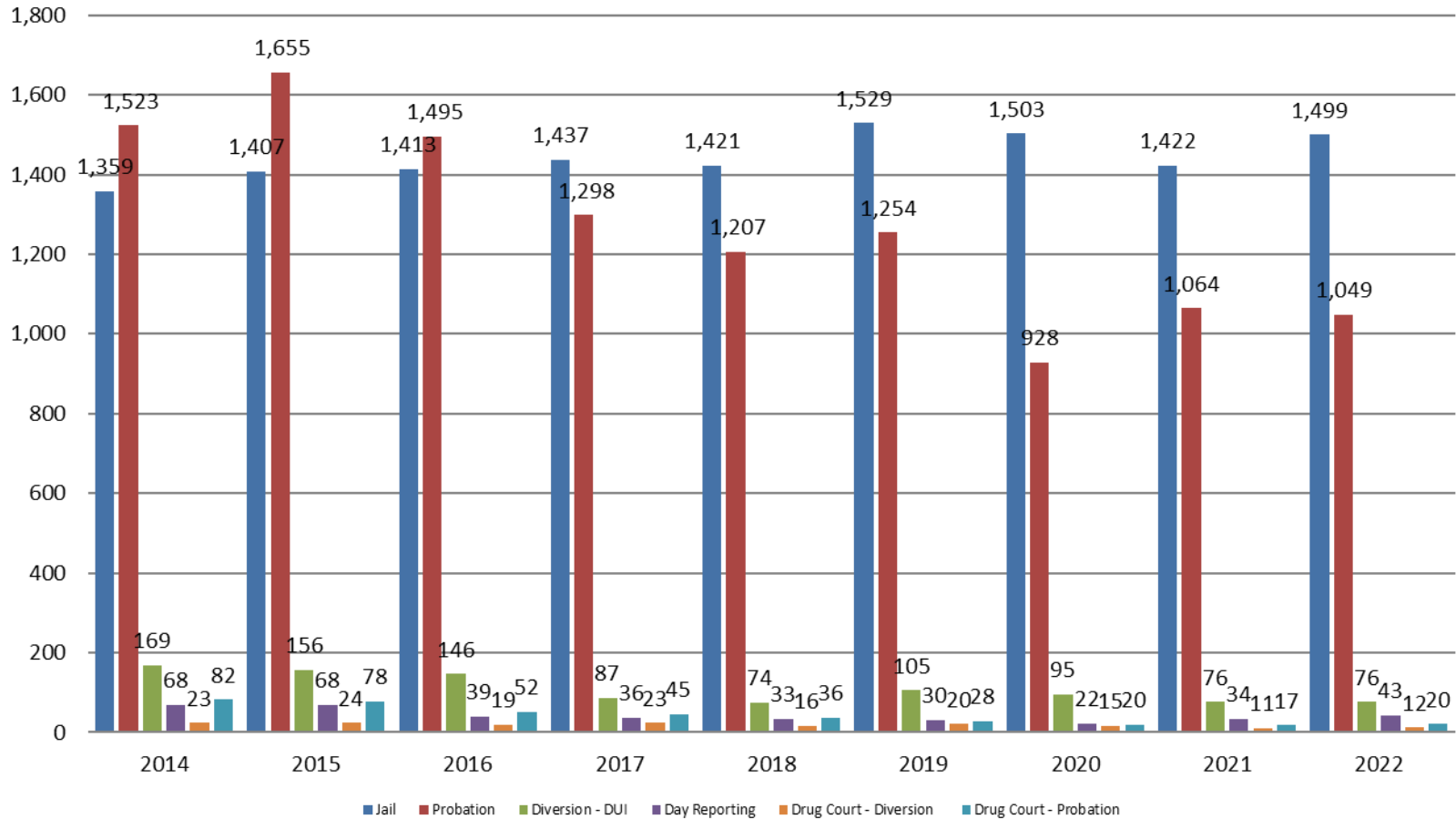
Correlation: Total & District Court Programs

Total Annual ADP: 2014 - present



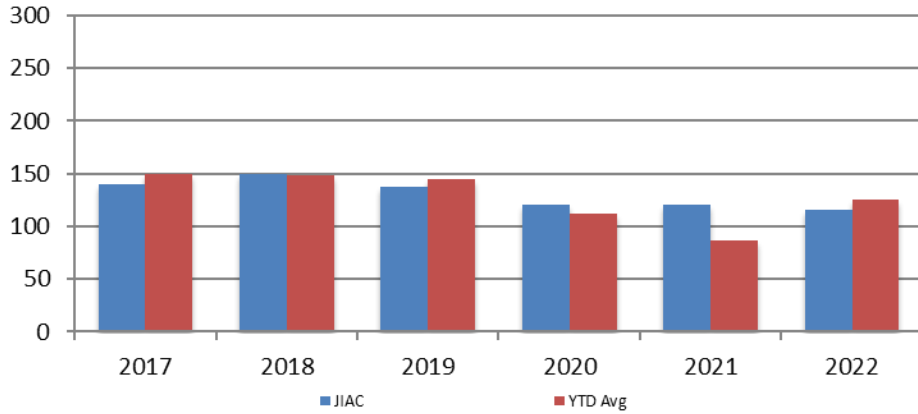
Correlation: Total & City of Wichita / Municipal Court Programs

Total Annual ADP: 2014 - present



Juvenile

JIAC Intakes
August 2017 - present

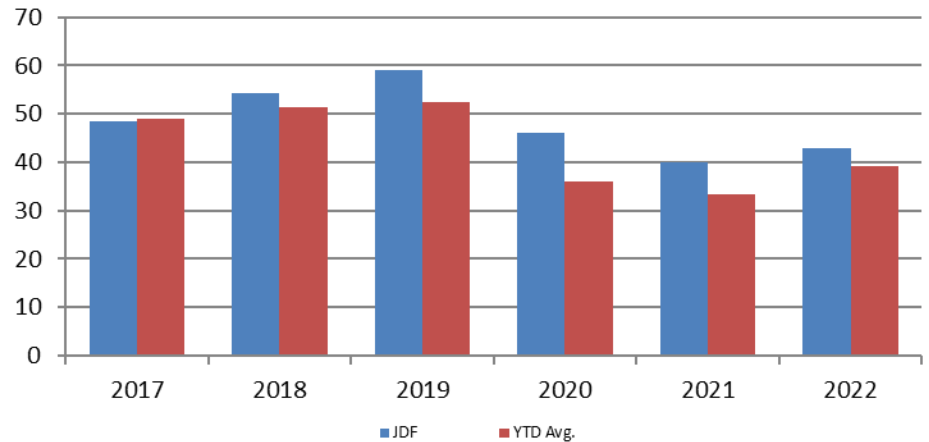


Year	August	August YTD Avg.
2017	140	150
2018	150	148
2019	138	145
2020	121	112
2021	120	87
2022	116	125

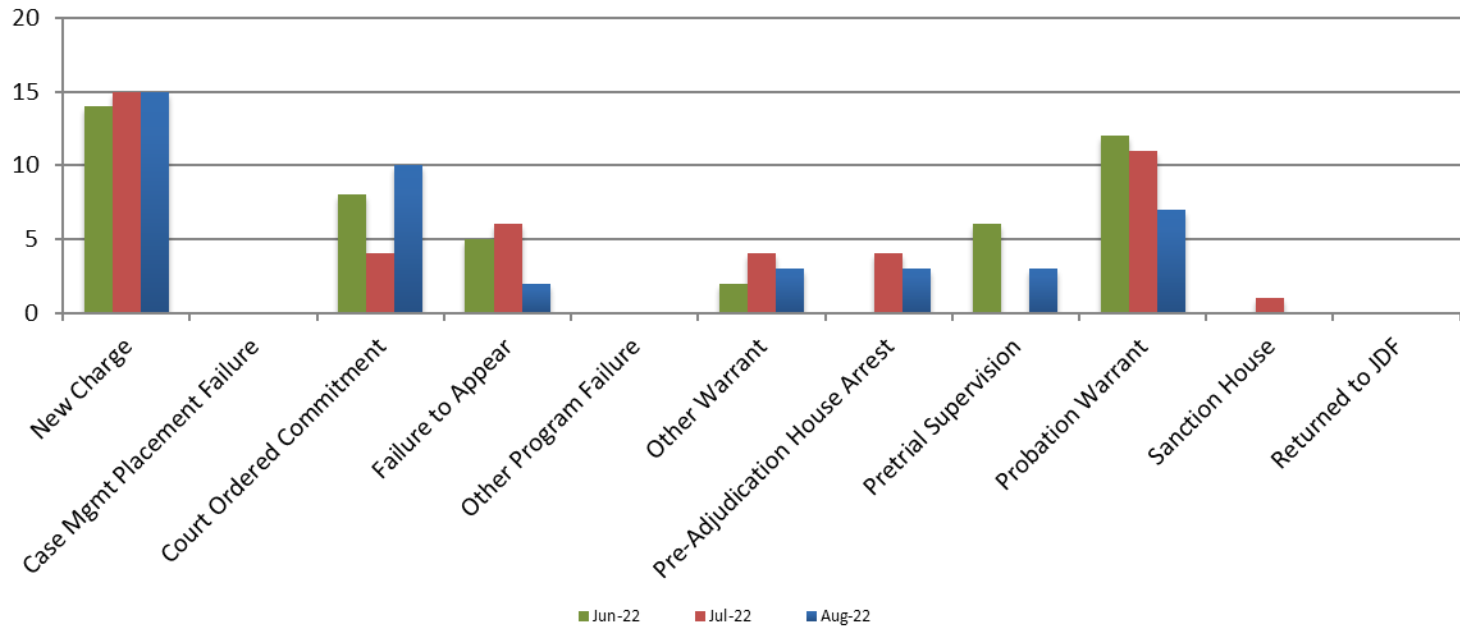
Year **August** **August YTD Avg.**

2017	49	49
2018	54	52
2019	59	52
2020	46	36
2021	40	33
2022	43	39

JDF ADP
August 2017 - present



Reason for JDF Admits



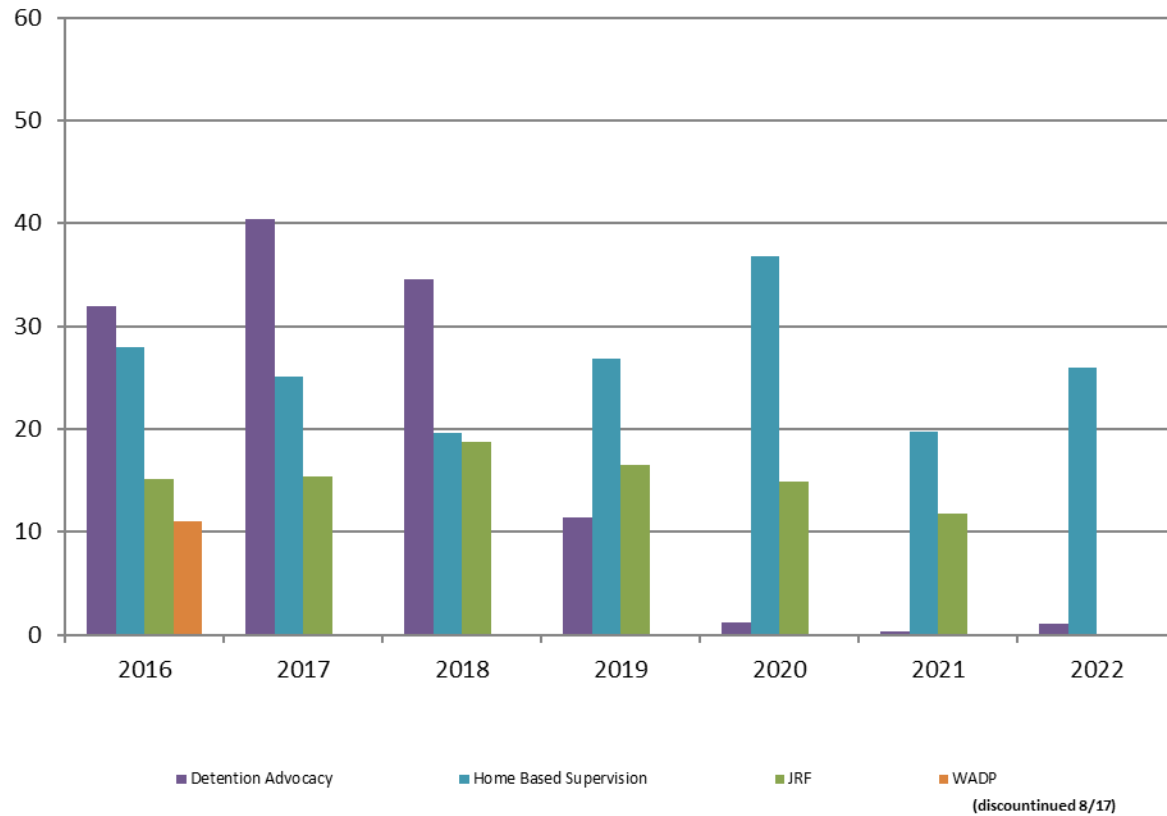
Reason for JDF Admits

Reason	August 2021	August 2022
New Charges	19	15
Case Management Placement Failures	0	0
Court Ordered Commitment	8	10
Failure to Appear	5	2
Other Program Failure	0	0
Other Warrant	0	3
Pre-Adjudication House Arrest	2	3
Pretrial Supervision	0	3
Probation Warrant	6	7
Sanction House	0	0
Returned to JDF	N/A	0



Juvenile Detention Alternatives

ADP: August 2016 - present



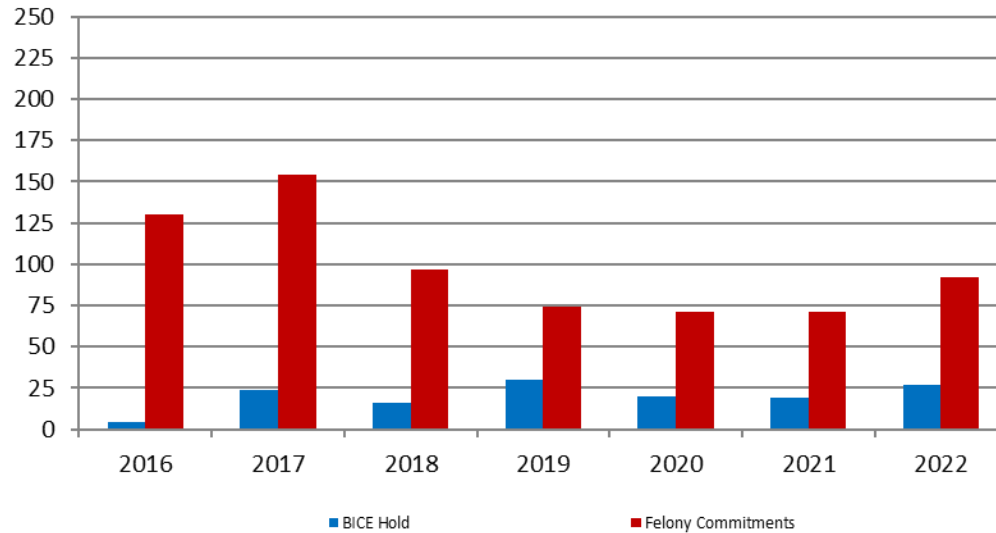
Juvenile Detention Services

August ADP	2019	2020	2021	2022
Juvenile Detention Facility	59	46	40	43
Juvenile Residential Facility	17	15	12	0
Home Based Supervision	28	37	20	26
Detention Advocacy Case Management Services	11	1	0	1
Weekend Alternative Detention Program (total)	N/A	N/A	N/A	N/A

August YTD AVERAGE	2019	2020	2021	2022
Juvenile Detention Facility	52	36	33	39
Juvenile Residential Facility	15	17	11	4
Home Based Supervision	28	30	23	20
Detention Advocacy Case Management Services	22	11	3	1
Weekend Alternative Detention Program	N/A	N/A	N/A	N/A

Monthly Jail Snapshot: August

Snapshots August 2016 - present

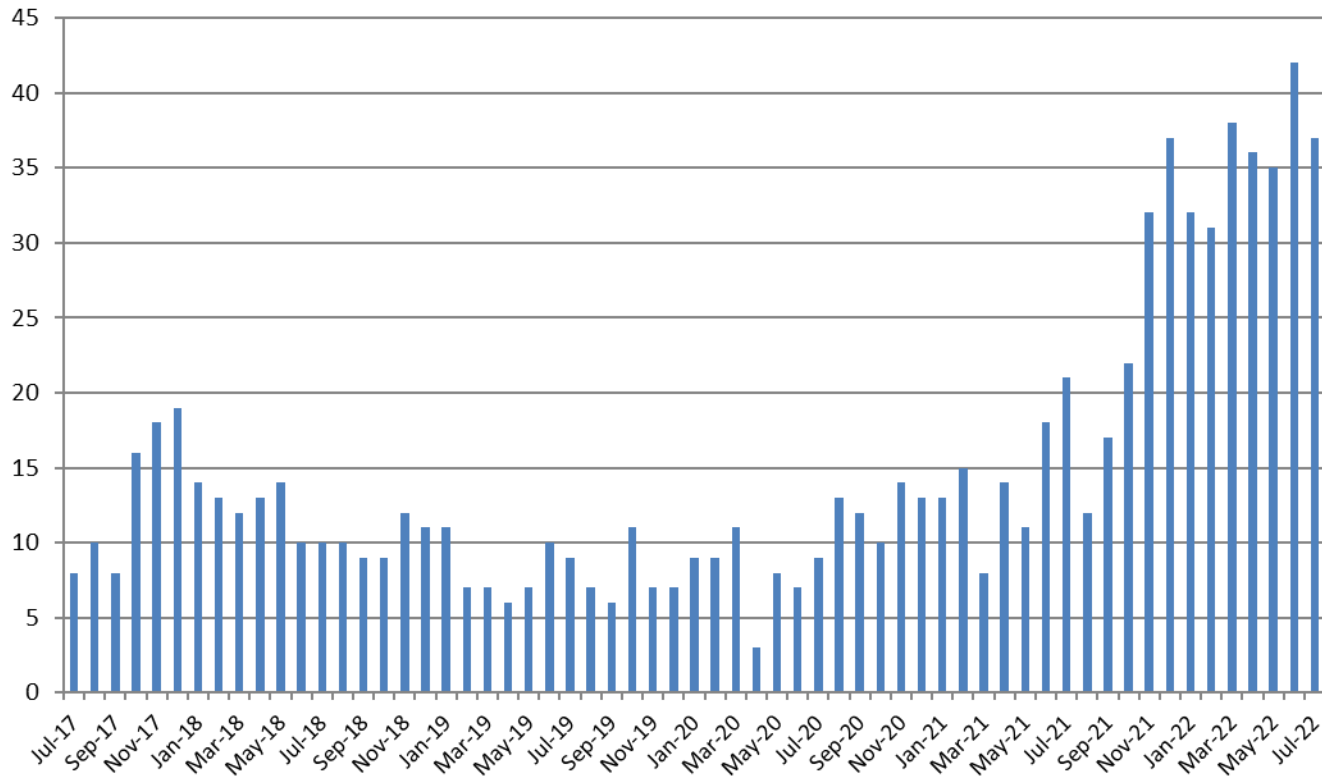


BICE Hold	2016	2017	2018	2019	2020	2021	2022
August	4	24	16	30	20	19	27

Felony Commitments	2016	2017	2018	2019	2020	2021	2022
August	130	154	97	74	71	71	92



Journal Entry Completion (Average Days) July 2016 - present



July	2017	2018	2019	2020	2021	2022
Avg. Days	8	10	9	9	21	37
YTD Avg.	9	12.3	8.1	8	14	35.9

