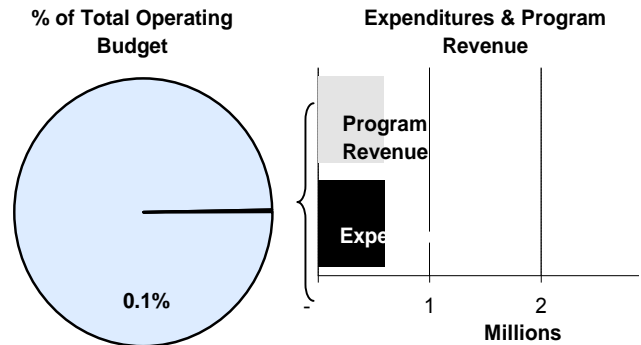
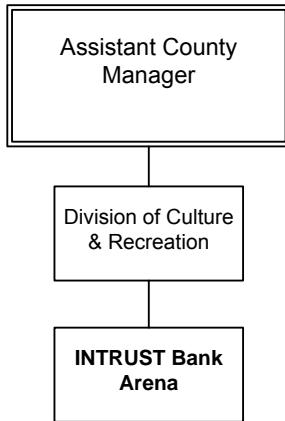




Ron Holt
 Assistant County Manager
 525 N. Main, Suite 343
 Wichita, Kansas 67203
 316-660-9393
 rholt@sedgwick.gov

Mission:

- The INTRUST Bank Arena is a modern, first class sports and entertainment venue owned by Sedgwick County and operated by SMG, providing 15,000 seats for basketball games. The INTRUST Bank Arena is home to indoor sporting events, concerts, family shows and other entertainment.



Description of Major Services

The INTRUST Bank Arena is a modern, state-of-the-art sports and entertainment venue, perfect for concerts and conventions alike. Located in the heart of downtown Wichita with restaurants, shops and eclectic entertainment options nearby, the INTRUST Bank Arena is the premier arena in the Midwest. The Arena features 22 suites, 40 loge boxes, 300 premium seats, has a total 15,000-seat capacity and hosts the top sporting events and entertainment with the industry’s best acoustics and sound system.

The facility is owned by Sedgwick County and operated through a management agreement with SMG. SMG manages stadiums, arenas, convention centers, and theaters around the world, and assumed management of the Arena when it opened in early 2010.

Construction costs associated with the INTRUST Bank Arena were funded without debt from the proceeds of a special one-cent County sales tax, which was approved by voters in November 2004. Senate Bill 58, signed on April 4, 2005 by Governor Kathleen Sebelius,

authorized Sedgwick County to collect a one-percent sales tax for a period of 30 months beginning July 1, 2005. The proceeds for this tax were specifically designated for the construction of an arena in the downtown area of Wichita and renovations to the Kansas Pavilions. This method allowed for the Arena to be constructed while the revenue was collected, eliminating the need for securing bonds to finance the project, saving approximately \$112 million in interest. The arena sales tax revenues exceeded projections and totaled \$206.5 million.

Local general contractor Dondlinger & Sons partnered with Hunt Construction, a national firm with significant experience in building arenas, to complete the arena project. The construction team worked with the Arena designers and the Arena Design Consortium to bring to life the building’s brick and limestone facades and the expansive lobby view toward Kellogg welcomes visitors and blends with the surrounding architectural heritage. The location was selected to help generate further redevelopment efforts by the City of Wichita for the downtown area.

The INTRUST Bank Arena contributes toward promoting, supporting and facilitating the creation of wealth and employment opportunities in downtown Wichita. The Metropolitan Area Planning Department (MAPD), which is jointly funded by Sedgwick County and the City of Wichita, is tasked with producing the neighborhood redevelopment plan for the area surrounding the INTRUST Bank Arena.

One of the unique aspects of the Arena project was continuous involvement by citizens. Commissioners encouraged citizen engagement as a means of soliciting ideas, concerns and views throughout the planning, design and construction processes. Two citizen-based committees, the Citizen Arena Sales Tax Oversight Committee and the Citizen Design Review Committee were created to ensure public participation, as well as numerous public meetings. In addition, Sedgwick County uses the Sedgwick County website in an effort to continue to keep the operation of the Arena transparent.

Programs and Functions

Some of 2012’s top events at the Arena include:

- Wichita Thunder regular and post-season games
- Disney Live!
- Harlem Globetrotters
- George Strait
- Jeff Dunham
- Sesame Street Live
- Jason Aldean
- Freestyle Motorcross
- Miranda Lambert
- Tom Petty & The Heartbreakers
- Hank Williams Jr.
- Wichita Ribfest
- Barry Manilow
- Nickelback
- NBA Preseason Game: Oklahoma City Thunder vs. Dallas Mavericks
- Carrie Underwood
- Eric Church
- Monster Jam Thunder Nationals

Current and Emerging Issues

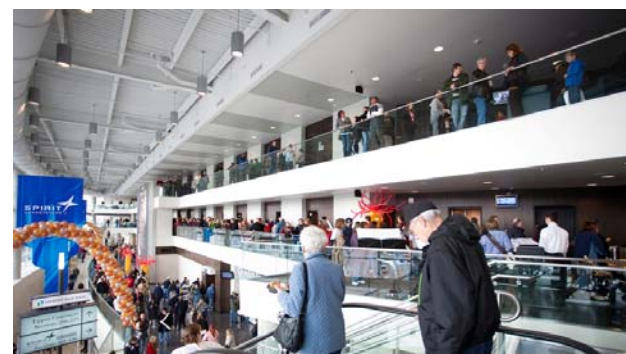
SMG pursues every act that is planning to tour arenas and continues work to secure a diverse group of acts at INTRUST Bank Arena.

Budget Adjustments

Changes to the Downtown Arena’s 2013 budget reflect a \$62,920 increase in contractual funding to support the responsibilities for interior signage, founding partner tickets and emergency building repairs outlined in the County’s agreement with SMG and the elimination of \$579,904 in interfund transfers due to the sale of the Kansas Pavilions in January 2012.

Arena Timeline

- **1977** - Kansas Coliseum built
- **November 2, 2004** - Sedgwick County Arena approved by Sedgwick County voters.
- **April 4, 2005** - Governor signs Senate Bill 58
- **July 1, 2005** - Sales tax begins
- **July 27, 2005** - Arena Design Consortium awarded contract for engineering and architect services for the Arena.
- **November 2005** - Site selection complete
- **January 2006** - Land acquisition begins
- **May 24, 2006** - Exterior design selected
- **November 2006** - Start bid process to hire general contractor for Pavilion upgrade
- **June 2007** - Arena Design Consortium awarded contract for engineering and architect services for the Arena.
- **July 2007** – Site demolition completed
- **September 2007** – Arena construction begins
- **September 2007** – Pavilions closed for renovations (May – Sept.)
- **December 2007** – Sales tax ends
- **2010** – Arena construction complete
- **January 9, 2010**- Opening Event



Significant Adjustments From Previous Budget Year

- Increase contractals to reflect SMG Agreement responsibilities (Interior signage, tickets, repairs, etc.)
- Eliminate interfund transfers due to sale of Kansas Pavilions in January 2012

Expenditures	Revenue	FTEs
62,920		
(579,904)		

Total	(516,984)	-	-
--------------	-----------	---	---

Budget Summary by Category

Budget Summary by Fund

Expenditures	2011	2012	2012	2013	% Chg.	Expenditures	2012	2013
	Actual	Adopted	Revised				Budget	'12-'13
Personnel	-	-	-	-	-	Downtown Arena-550	1,116,984	600,000
Contractual Services	456,602	72,500	287,080	350,000	21.9%			
Debt Service	-	-	-	-	-			
Commodities	-	-	-	-	-			
Capital Improvements	256,065	250,000	250,000	250,000	0.0%			
Capital Equipment	-	-	-	-	-			
Interfund Transfers	742,989	584,989	579,904	-	-100.0%			
Total Expenditures	1,455,657	907,489	1,116,984	600,000	-46.3%	Total Expenditures	1,116,984	600,000
Revenue								
Taxes	-	-	-	-	-			
Intergovernmental	-	-	-	-	-			
Charges For Service	-	590,000	590,000	590,000	0.0%			
Other Revenue	59,291	200,000	200,000	-	-100.0%			
Total Revenue	59,291	790,000	790,000	590,000	-25.3%			
Full-Time Equivalent (FTEs)	-	-	-	-	-			

Budget Summary by Program

Program	Fund	Expenditures				2013	% Chg.	Full-Time Equivalent (FTEs)		
		2011	2012	2012	2013			2012	2012	2013
		Actual	Adopted	Revised	Budget	'12-'13	Adopted	Revised	Budget	
Pavilion Operations	550	742,989	584,989	579,904	-	-100.0%	-	-	-	
Arena Operations	550	456,602	72,500	287,080	350,000	21.9%	-	-	-	
Arena Capital Improv	550	256,065	250,000	250,000	250,000	0.0%	-	-	-	
Total		1,455,657	907,489	1,116,984	600,000	-46.3%	-	-	-	



● Pavilion Operations

Senate Bill 58, signed on April 4, 2005 by Governor Kathleen Sebelius, authorized Sedgwick County to collect a one percent sales tax for a period of 30 months beginning July 1, 2005. The proceeds for this tax were specifically designated for the construction of an Arena in the downtown area of Wichita, renovations to the Kansas Pavilions, and an operating/maintenance reserve for the INTRUST Bank Arena and the Kansas Pavilions. Beginning in 2010, the operating subsidy to the Kansas Pavilions was paid from the Arena Sales Tax fund. With the sale of the Kansas Pavilions in January 2012, all financial activity in this fund center ends in 2012.

Fund(s): Downtown Arena 550

57002-550

	2011	2012	2012	2013	% Chg.
	Actual	Adopted	Revised	Budget	'12-'13
Expenditures					
Personnel	-	-	-	-	
Contractual Services	-	-	-	-	
Debt Service	-	-	-	-	
Commodities	-	-	-	-	
Capital Improvements	-	-	-	-	
Capital Equipment	-	-	-	-	
Interfund Transfers	742,989	584,989	579,904	-	-100.0%
Total Expenditures	742,989	584,989	579,904	-	-100.0%
Revenue					
Taxes	-	-	-	-	
Intergovernmental	-	-	-	-	
Charges For Service	-	-	-	-	
Other Revenue	-	-	-	-	
Total Revenue	-	-	-	-	
Full-Time Equivalents (FTEs)	-	-	-	-	

● Arena Operations

Senate Bill 58, signed on April 4, 2005 by Governor Kathleen Sebelius, authorized Sedgwick County to collect a one percent sales tax for a period of 30 months beginning July 1, 2005. The proceeds for this tax were specifically designated for the construction of an Arena in the downtown area of Wichita, renovations to the Kansas Pavilions, and an operating/maintenance reserve for the INTRUST Bank Arena and the Kansas Pavilions. The Arena Operations fund center is budgeted for operation and maintenance expenditures for the INTRUST Bank Arena.

Fund(s): Downtown Arena 550

57014-550

	2011	2012	2012	2013	% Chg.
	Actual	Adopted	Revised	Budget	'12-'13
Expenditures					
Personnel	-	-	-	-	
Contractual Services	456,602	72,500	287,080	350,000	21.9%
Debt Service	-	-	-	-	
Commodities	-	-	-	-	
Capital Improvements	-	-	-	-	
Capital Equipment	-	-	-	-	
Interfund Transfers	-	-	-	-	
Total Expenditures	456,602	72,500	287,080	350,000	21.9%
Revenue					
Taxes	-	-	-	-	
Intergovernmental	-	-	-	-	
Charges For Service	-	590,000	590,000	590,000	0.0%
Other Revenue	59,291	200,000	200,000	-	-100.0%
Total Revenue	59,291	790,000	790,000	590,000	-25.3%
Full-Time Equivalents (FTEs)	-	-	-	-	



• **Arena Capital Improv**

Senate Bill 58, signed on April 4, 2005 by Governor Kathleen Sebelius, authorized Sedgwick County to collect a one percent sales tax for a period of 30 months beginning July 1, 2005. The proceeds for this tax were specifically designated for the construction of an Arena in the downtown area of Wichita, renovations to the Coliseum Pavilions, and an operating/maintenance reserve for the INTRUST Bank Arena and the Kansas Pavilions. The Arena Capital Improvement fund center is budgeted for INTRUST Bank Arena capital projects.

Fund(s): Downtown Arena 550

57017-550

	2011	2012	2012	2013	% Chg.
	Actual	Adopted	Revised	Budget	'12-'13
Expenditures					
Personnel	-	-	-	-	
Contractual Services	-	-	-	-	
Debt Service	-	-	-	-	
Commodities	-	-	-	-	
Capital Improvements	256,065	250,000	250,000	250,000	0.0%
Capital Equipment	-	-	-	-	
Interfund Transfers	-	-	-	-	
Total Expenditures	256,065	250,000	250,000	250,000	0.0%
Revenue					
Taxes	-	-	-	-	
Intergovernmental	-	-	-	-	
Charges For Service	-	-	-	-	
Other Revenue	-	-	-	-	
Total Revenue	-	-	-	-	
Full-Time Equivalent (FTEs)	-	-	-	-	

