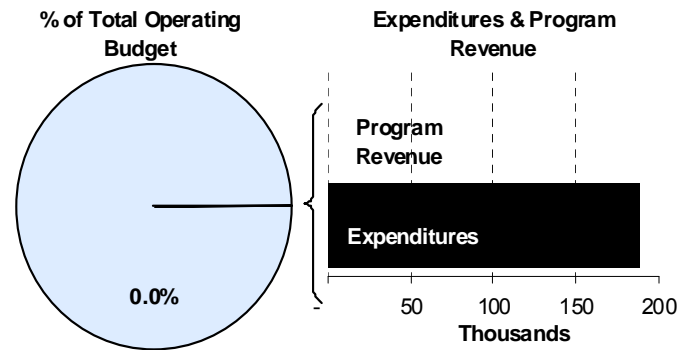
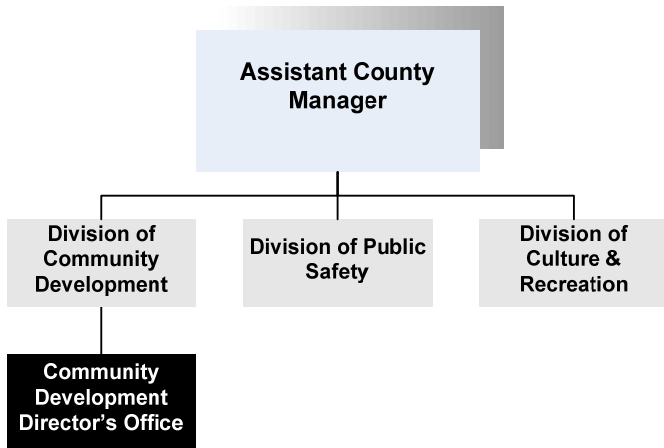


**Irene Hart**  
 Director of Community Development  
 510 N. Main, 6<sup>th</sup> Floor  
 Wichita, KS 67203  
 316-660-9863  
[ihart@sedgwick.gov](mailto:ihart@sedgwick.gov)

**Mission:**

- To promote the growth of a healthy and productive community that successfully integrates the natural, the social, and the economic environments.



**Program Information**

The Community Development Director’s Office is responsible for a broad range of both internal and external functions. Internally, the office oversees the operation of four individual departments and all programs funded within the Community Development Division. The Director’s Office provides administrative support and encourages coordination of community development efforts among internal and external entities.

The Director’s Office functions externally as the primary policy staff for economic development and activities engaging the community, other local governments, and interested organizations. Activities include:

- Primary staff support for the K-96 and K-254 Corridor Coalitions and the Greater Wichita Economic Development Coalition.
- Working with multiple jurisdictions and interest groups to develop policies which promote efficient and orderly urban growth.
- Acting as a liaison to ethnic, minority and neighborhood-based organizations in the County.

