

# Criminal Justice Coordinating Council

## Population Report & Program Trends

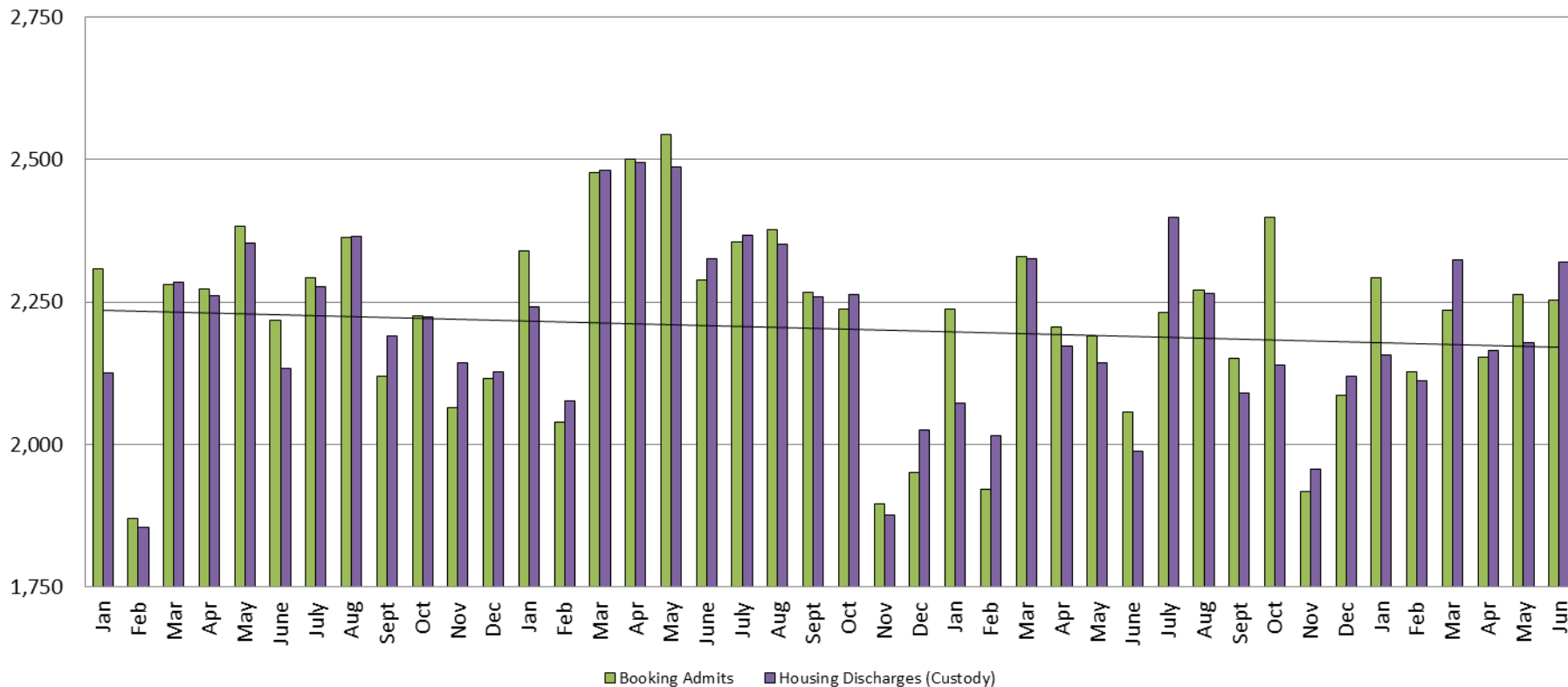
July 28, 2016



*Sedgwick County...*  
*working for you*

# Detention Facility

## Booking Admits & Housing Discharges from Custody January 2013 - Present



### Housing Discharges for June

2014 = 2,326  
 2015 = 1,988  
 2016 = 2,320

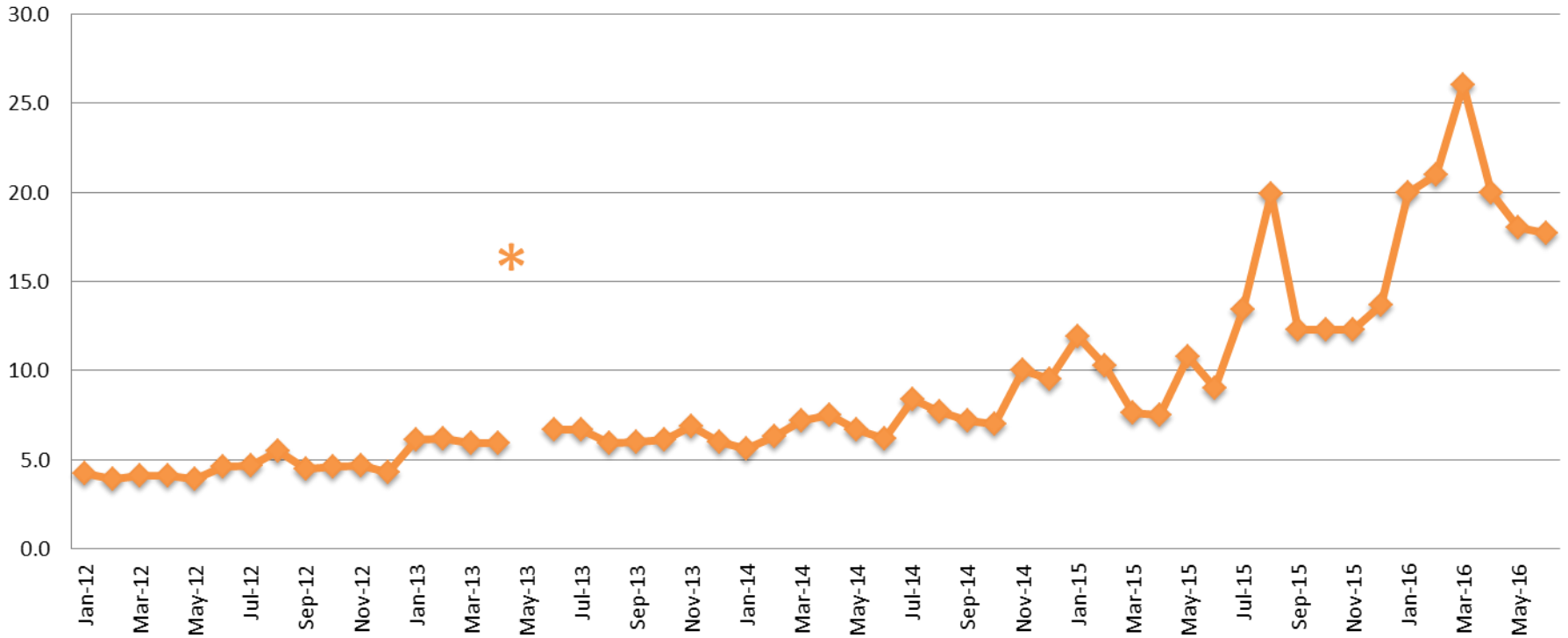
### Bookings for June

2014 = 2,288  
 2015 = 2,056  
 2016 = 2,254



# Average Length of Stay: Booking (Hours)

## January 2012 - Present



Series1

\* represents an anomaly in May 2013

### June

2012 = 4.6

2013 = 6.7

2014 = 6.2

2015 = 9.0

2016 = 17.7

### June YTD Avg.

2012 = 4.1

2013 = 7.8

2014 = 6.6

2015 = 9.5

2016 = 20.5

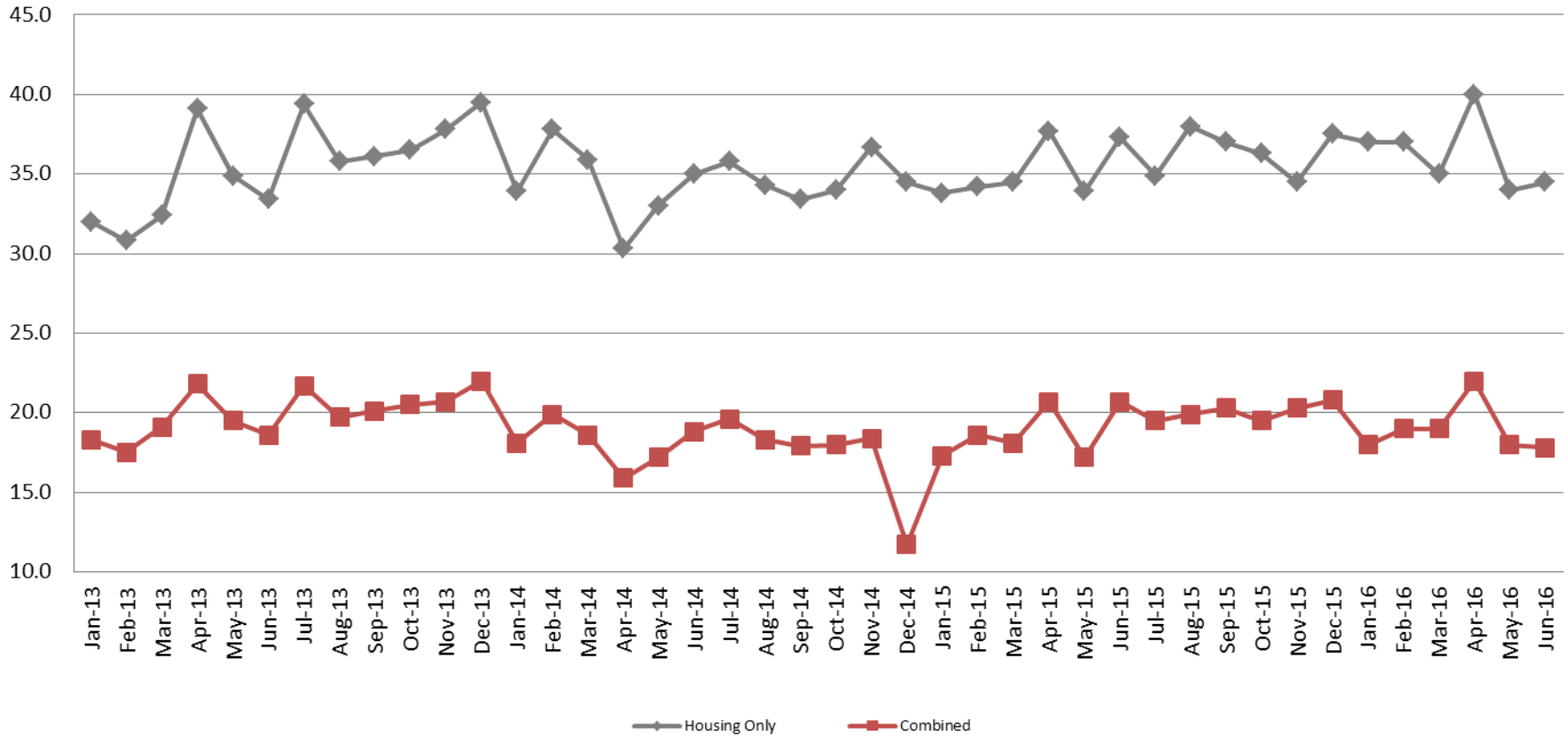


Sedgwick County...  
working for you

(data obtained from detention facility)

# Average Length of Stay: Housing & Combined (Days)

January 2013 - Present



## June Housing

2013 = 33.4  
 2014 = 35.0  
 2015 = 37.3  
 2016 = 34.5

## June Housing YTD Avg.

2013 = 33.8  
 2014 = 34.3  
 2015 = 35.2  
 2016 = 36.3

## June Combined

2013 = 18.6  
 2014 = 18.8  
 2015 = 20.7  
 2016 = 17.8

## June Combined YTD Avg.

2013 = 19.1  
 2014 = 18.1  
 2015 = 18.8  
 2016 = 19.0

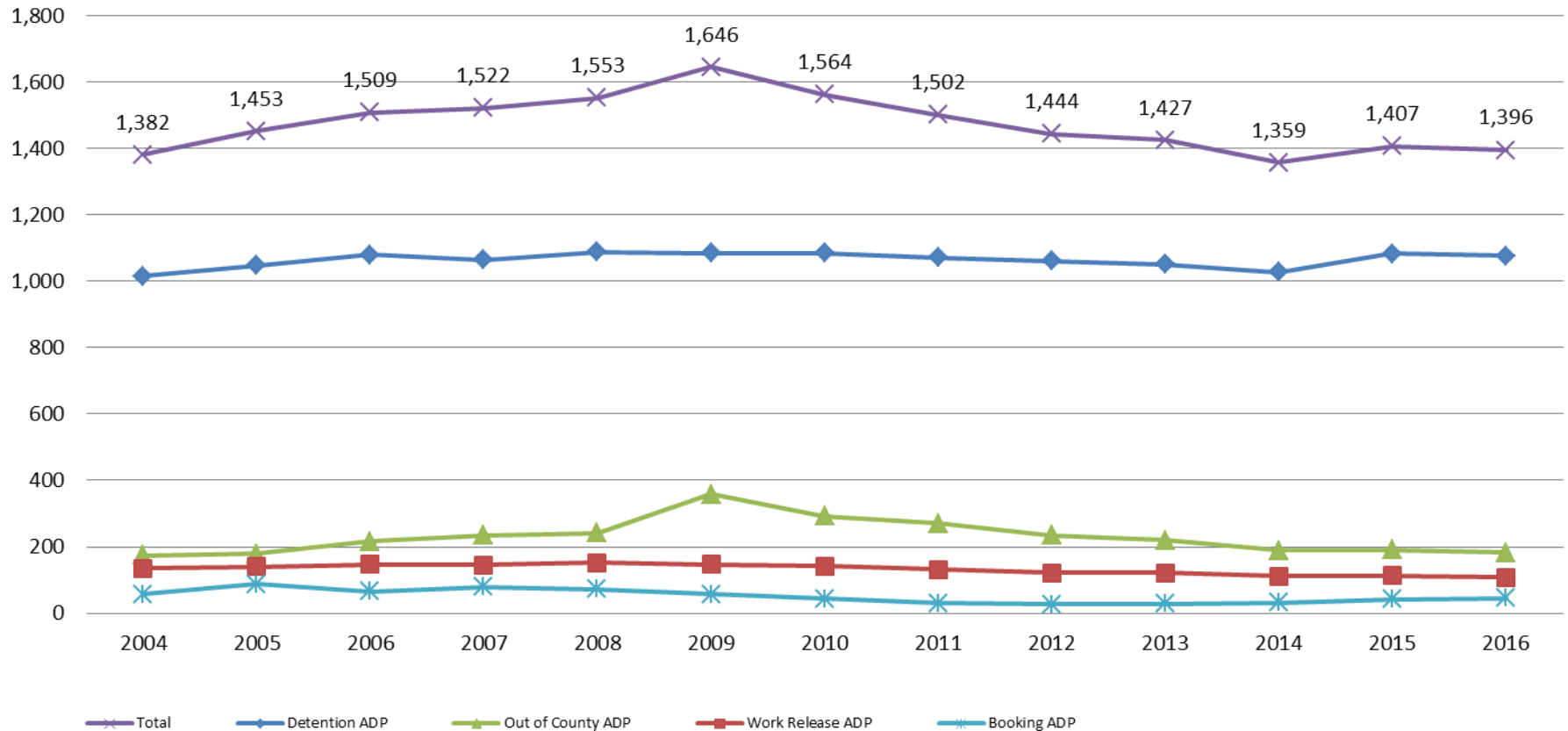


Sedgwick County...  
 working for you

(data obtained from detention facility)

# Jail: Annual Average Daily Population (ADP)

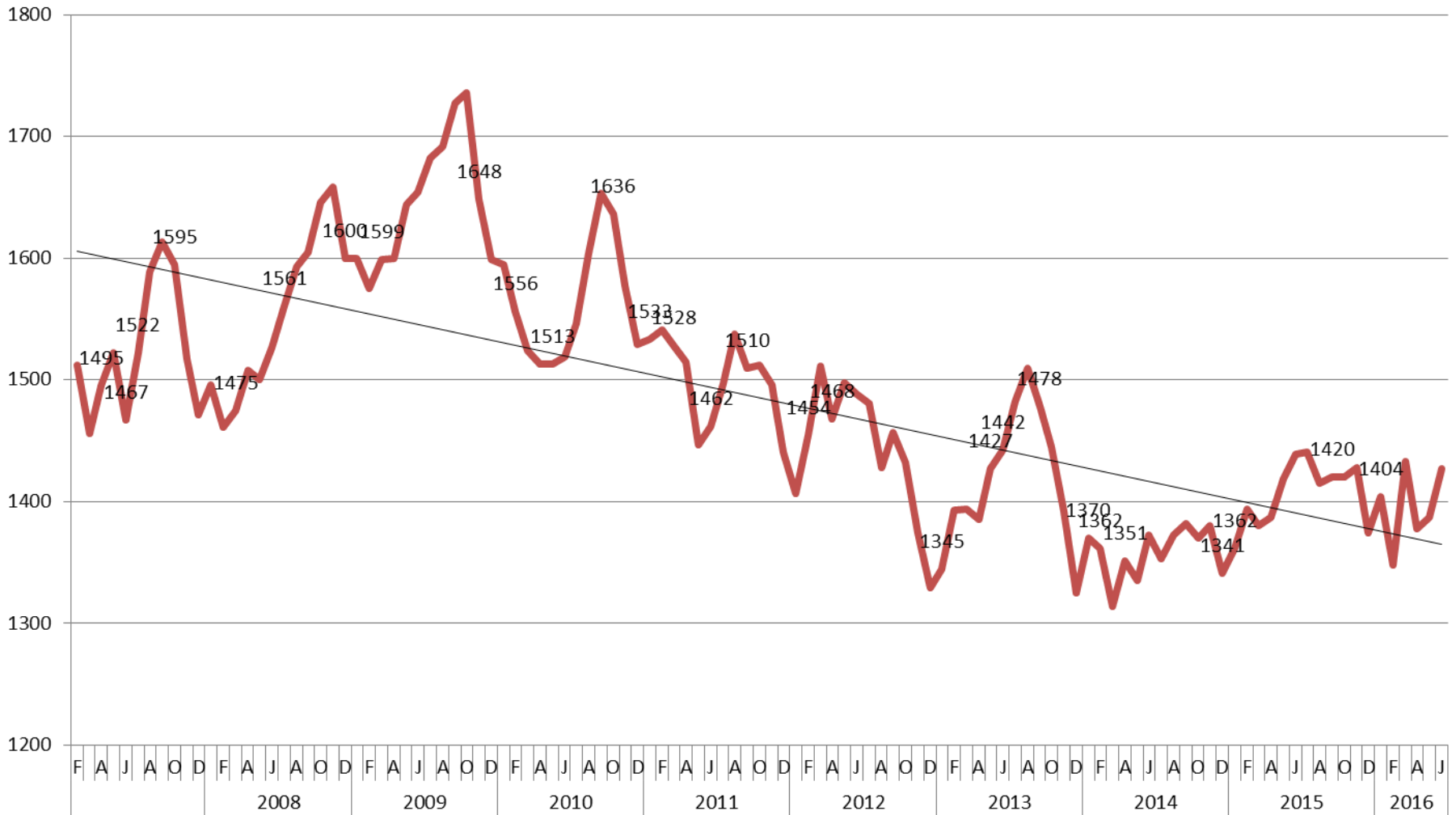
**TRENDS: Booking, Detention, Work Release, & Out of County Annual ADP:  
2004 - present**



# TOTAL MONTHLY ADP: JAIL

## (Booking, Detention Facility, Work Release, & Out of County)

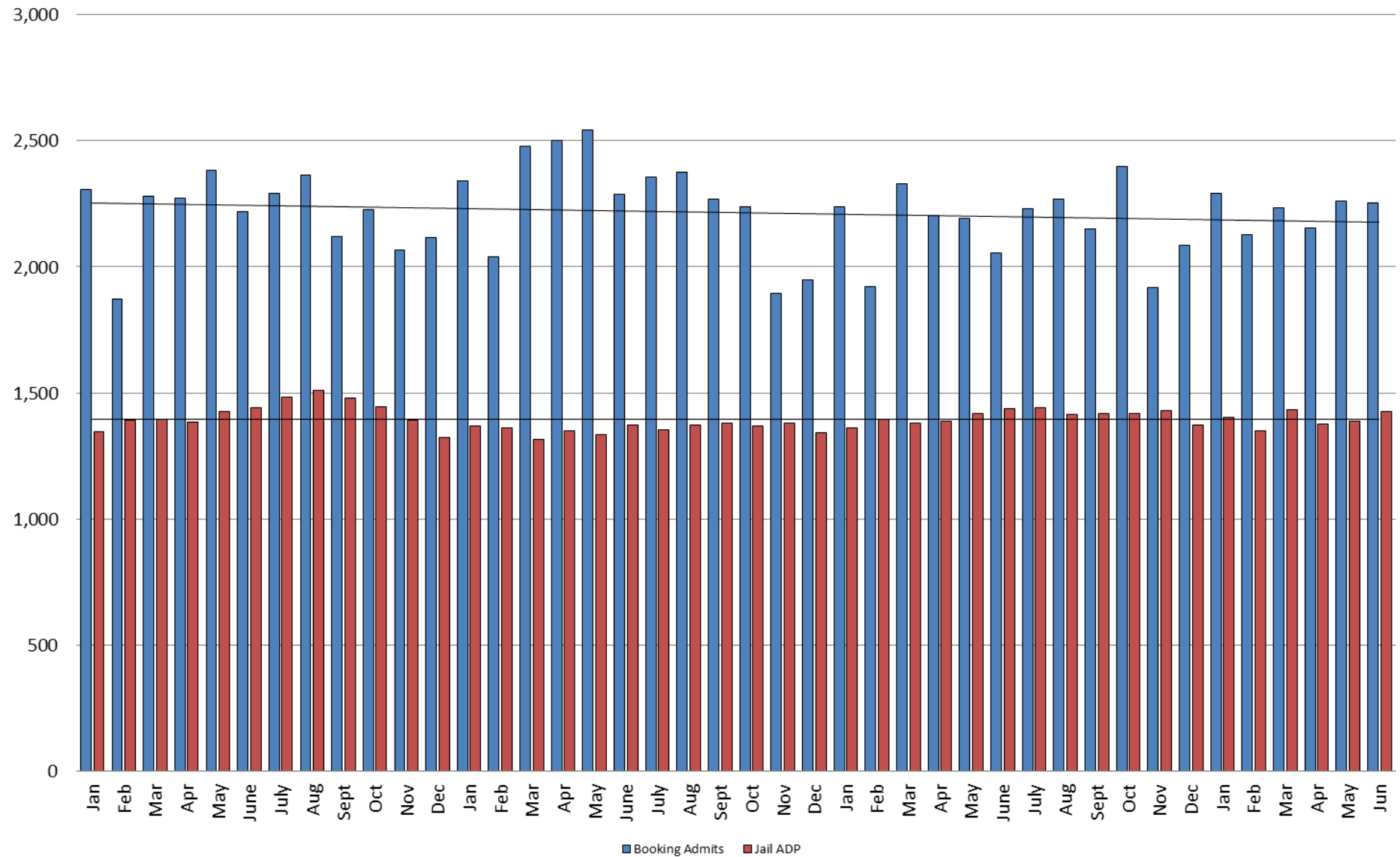
### 2007 - present



This slide shows total monthly ADP for individuals in booking, detention, work release and out-of county (combined)



# Booking Admits & Total Monthly ADP (Jail): 2013 - present

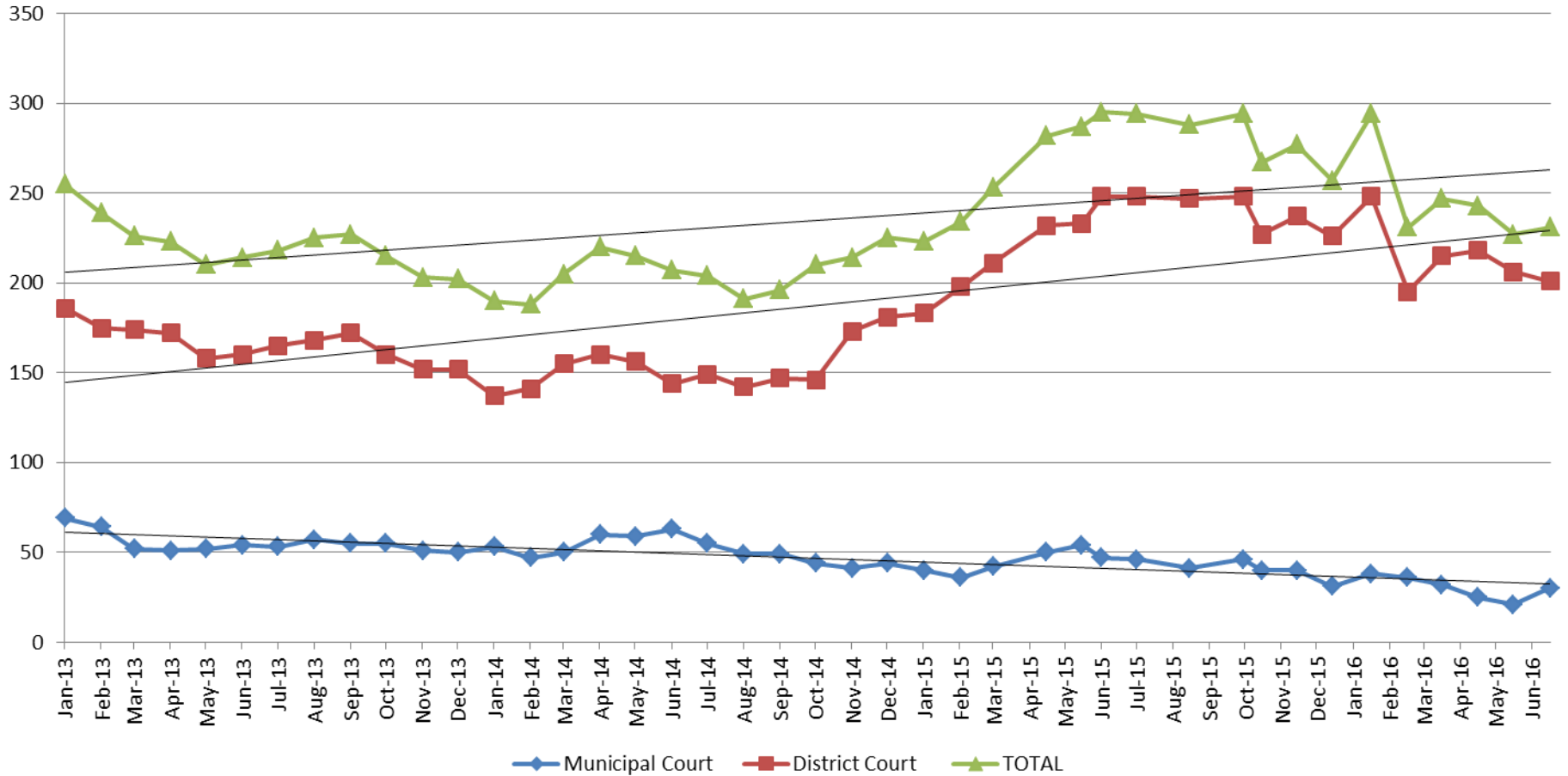


Jail includes individuals in booking, detention, work release and out-of county (combined)

(data obtained from detention facility)



# Pretrial Services Program (PSP) Monthly ADP: January 2013 - Present



<b>June</b>	<b>2013</b>	<b>2014</b>	<b>2015</b>	<b>2016</b>
Municipal Court	54	63	47	30
District Court	160	144	248	201
<b>TOTAL</b>	<b>214</b>	<b>207</b>	<b>295</b>	<b>231</b>

<b>June YTD Avg.</b>	<b>2013</b>	<b>2014</b>	<b>2015</b>	<b>2016</b>
Municipal Court	57	55	45	30
District Court	171	149	218	214
<b>TOTAL</b>	<b>228</b>	<b>204</b>	<b>262</b>	<b>246</b>

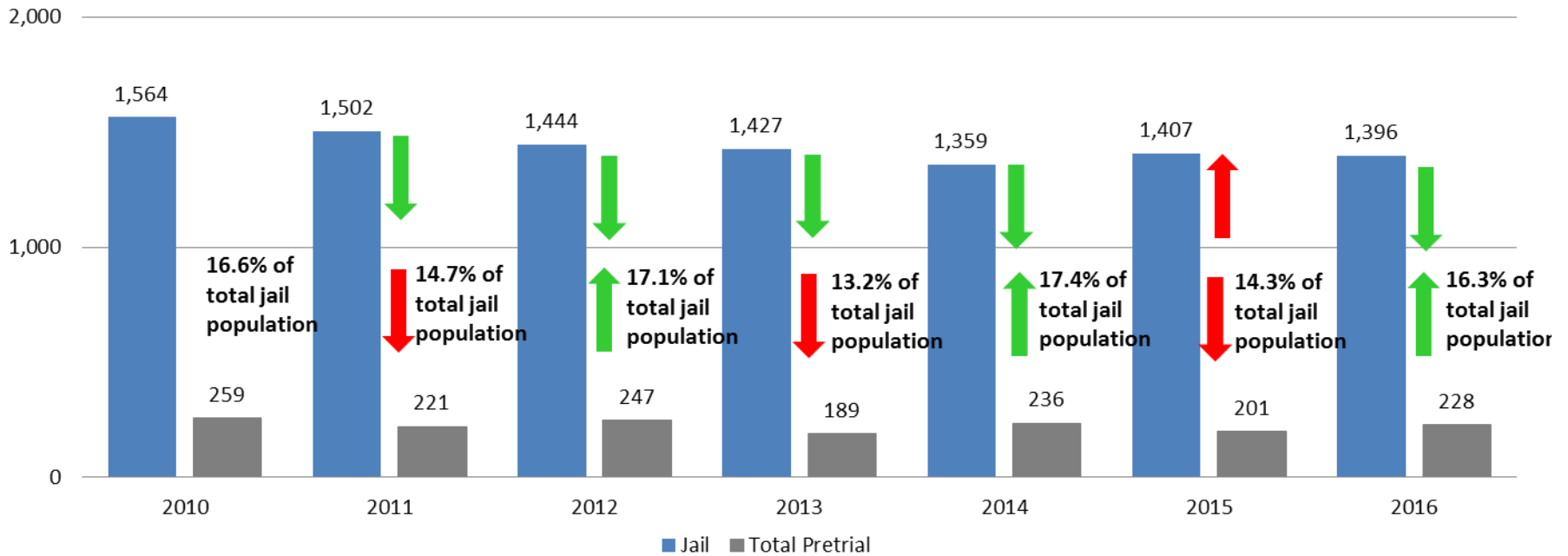


(data obtained from Pretrial Services)



# Correlation: Total & PSP

## Total Annual ADP: 2010 - Present



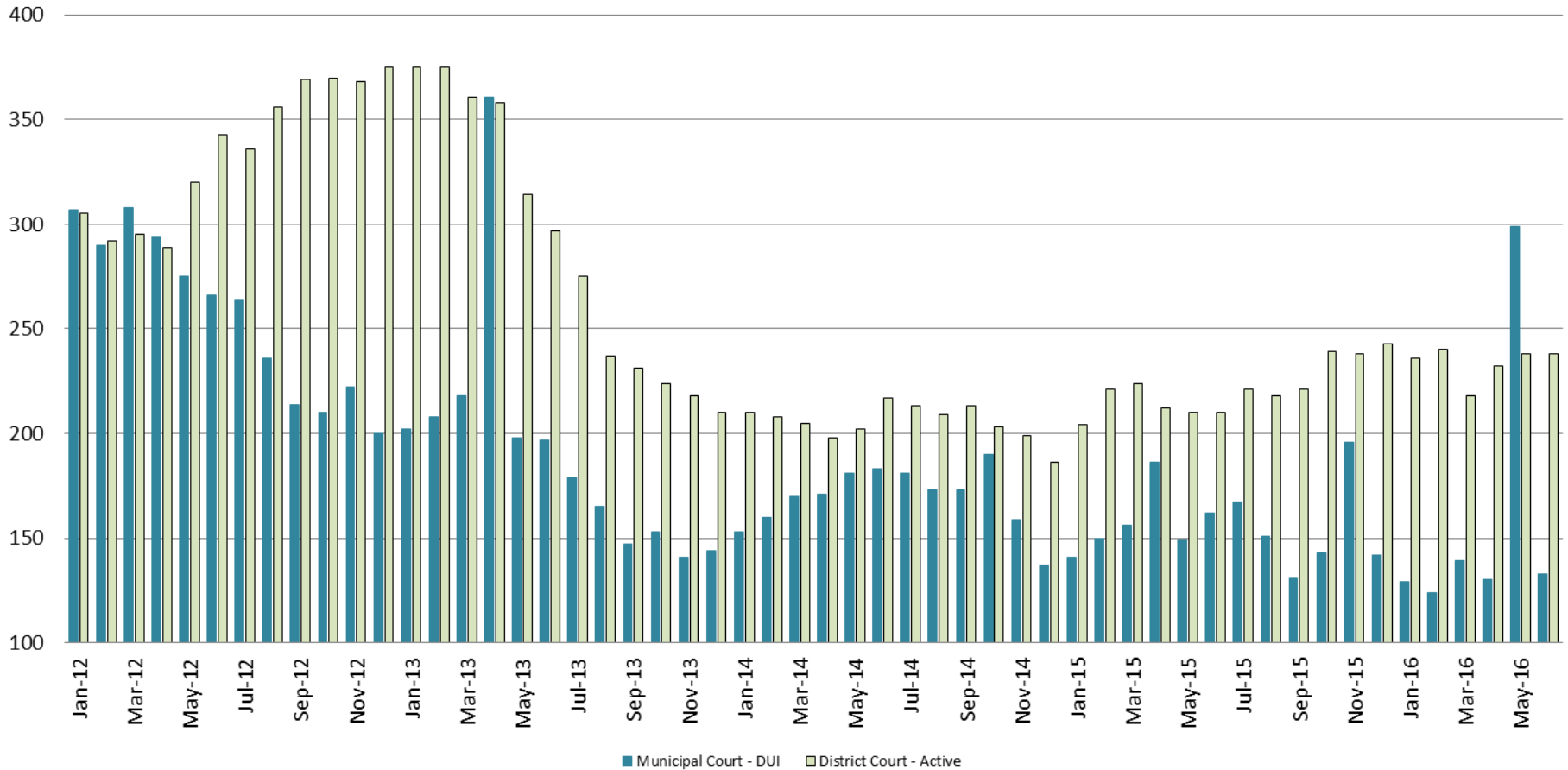
Arrows represent the overall increase/decrease of the population from year to year

Jail includes individuals in booking, detention, work release and out-of county (combined)



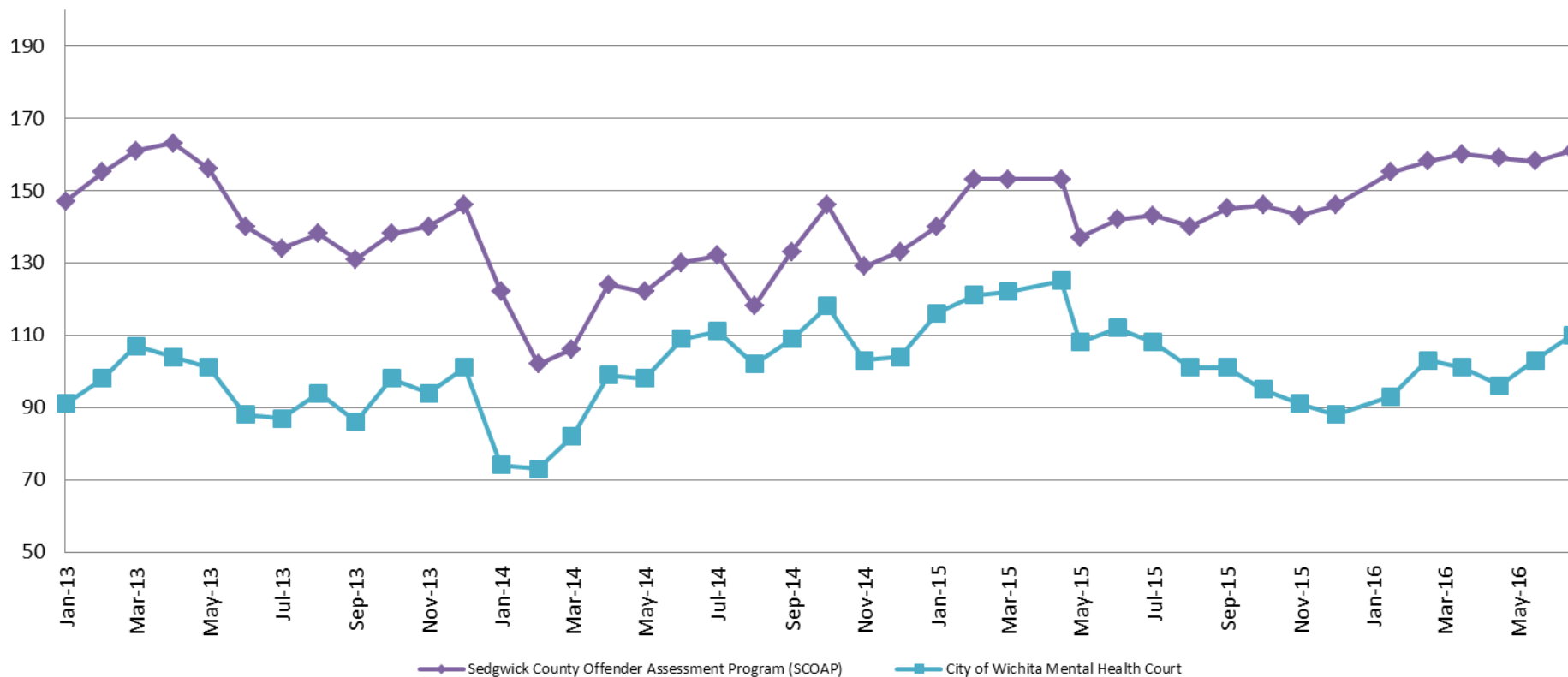
# Diversions - Active Caseload

January 2012 - Present



<u>June</u>	<u>2013</u>	<u>2014</u>	<u>2015</u>	<u>2016</u>	<u>June YTD Avg.</u>	<u>2013</u>	<u>2014</u>	<u>2015</u>	<u>2016</u>
Municipal Court- DUI	197	183	162	133	Municipal Court	231	170	157	159
District Court- Active	297	217	210	238	District Court	347	207	214	234

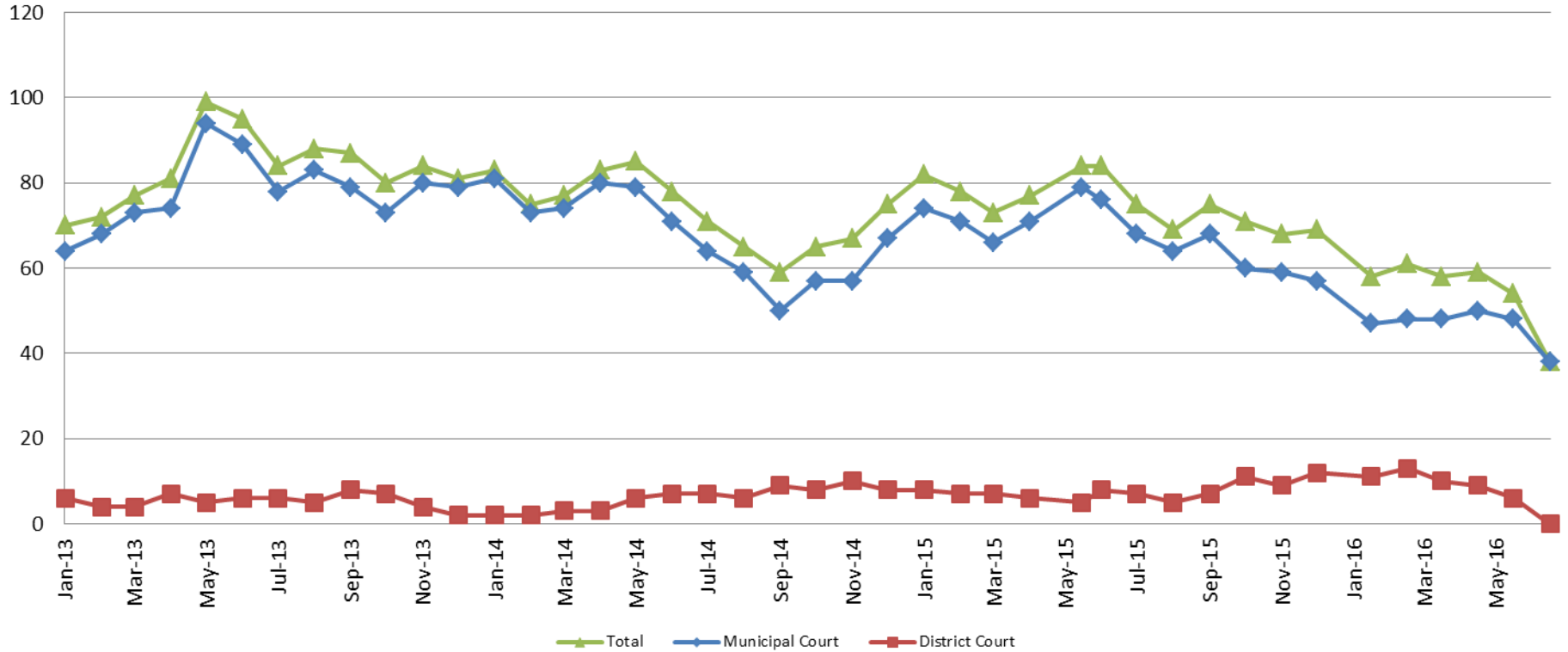
# Mental Health - ADP 2013 - present



<b>June:</b>	<b>2013</b>	<b>2014</b>	<b>2015</b>	<b>2016</b>
SCOAP	140	130	142	161
CoW – MH Court	88	109	112	110
<b>June YTD Avg.</b>	<b>2013</b>	<b>2014</b>	<b>2015</b>	<b>2016</b>
SCOAP	154	118	146	159
CoW – MH Court	98	89	117	101

# Day Reporting - Active Caseload

2013-present

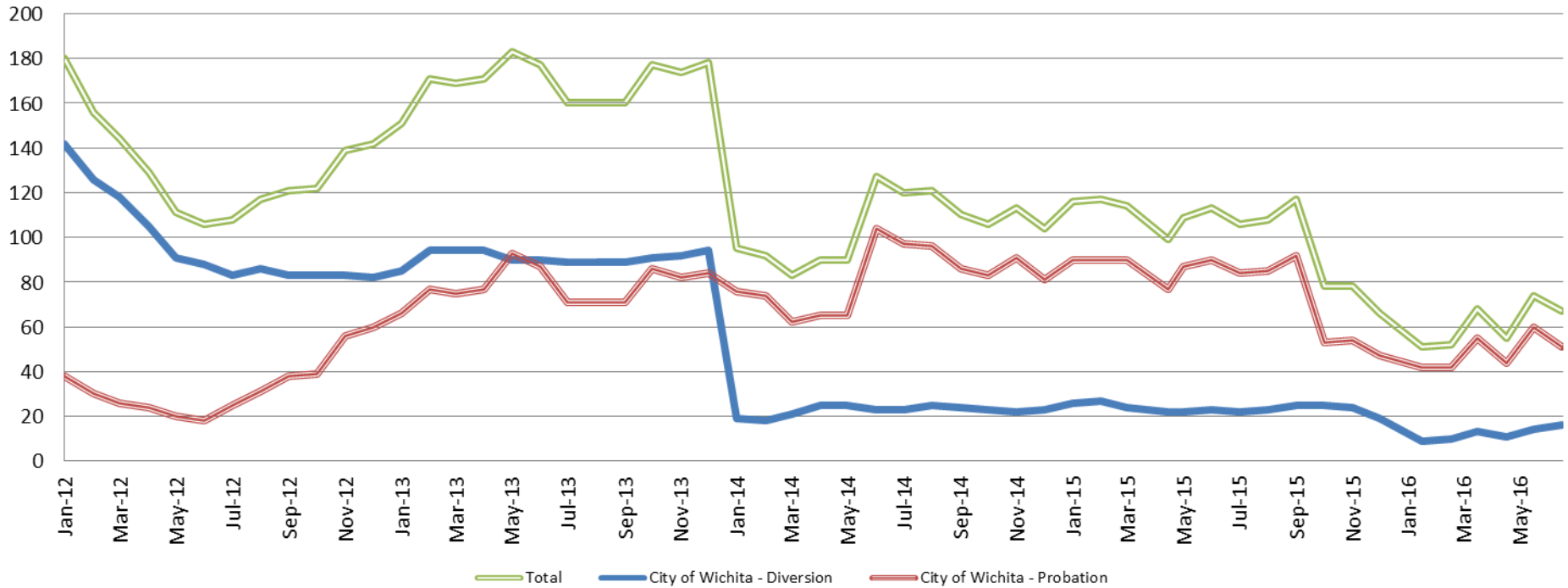


<b>June</b>	<b>2013</b>	<b>2014</b>	<b>2015</b>	<b>2016</b>
Municipal Court	89	71	76	38
District Court	6	7	8	0*
<b>TOTAL</b>	<b>95</b>	<b>78</b>	<b>84</b>	<b>38</b>
<b>June YTD Avg.</b>	<b>2013</b>	<b>2014</b>	<b>2015</b>	<b>2016</b>
Municipal Court	77	76	73	47
District Court	5	4	7	8
<b>TOTAL</b>	<b>82</b>	<b>80</b>	<b>80</b>	<b>55</b>



# Drug Court - City of Wichita

## ADP: 2012 - present



**June - CoW Diversion**

2013 = 90  
 2014 = 23  
 2015 = 23  
 2016 = 16

**June YTD Avg.**

2013 = 91  
 2014 = 22  
 2015 = 24  
 2016 = 12

**June - CoW Probation**

2013 = 87  
 2014 = 104  
 2015 = 90  
 2016 = 51

**June YTD Avg.**

2013 = 79  
 2014 = 74  
 2015 = 87  
 2016 = 49

**June - CoW Total**

2013 = 177  
 2014 = 127  
 2015 = 113  
 2016 = 67

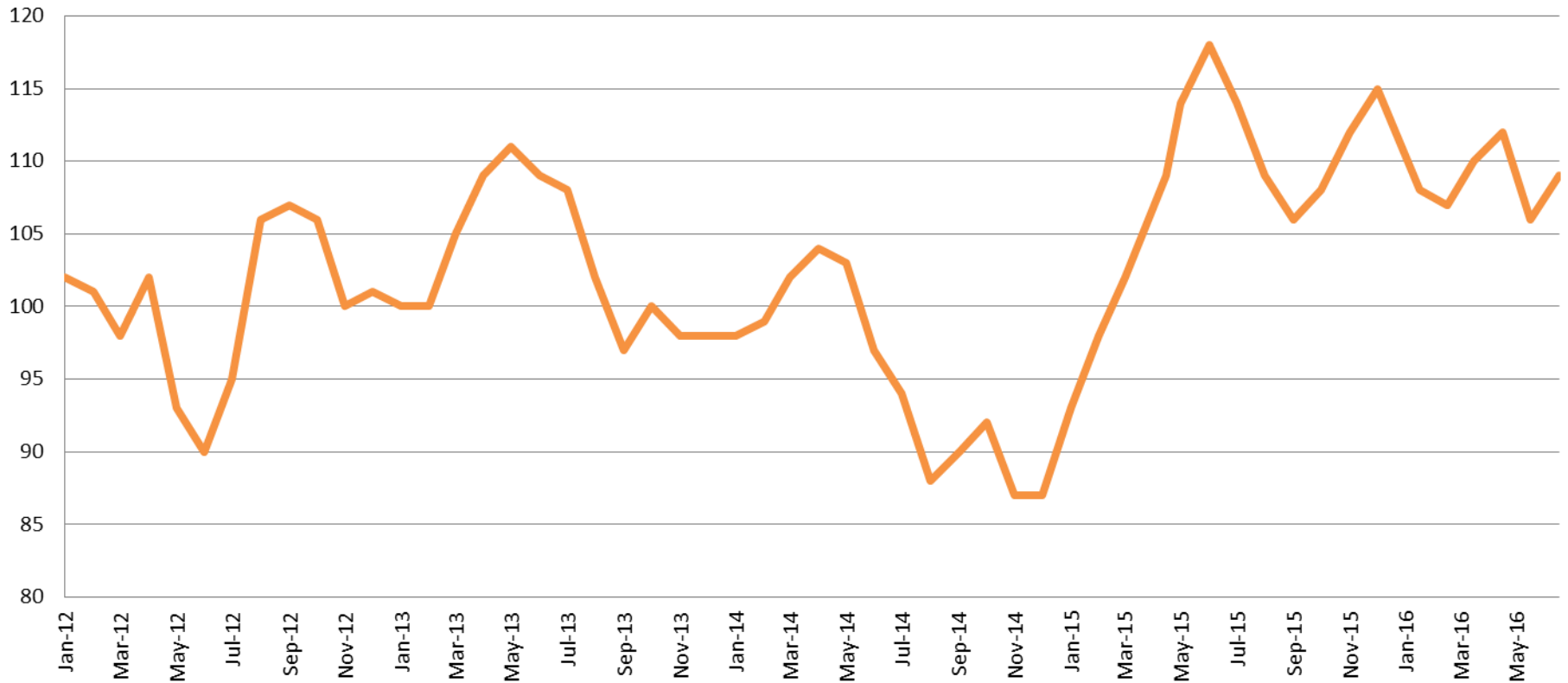
**June YTD Avg.**

2013 = 170  
 2014 = 96  
 2015 = 111  
 2016 = 61

(data obtained from CoW)

# Drug Court - Sedgwick County

## ADP: 2012 - present



### June - SG CO

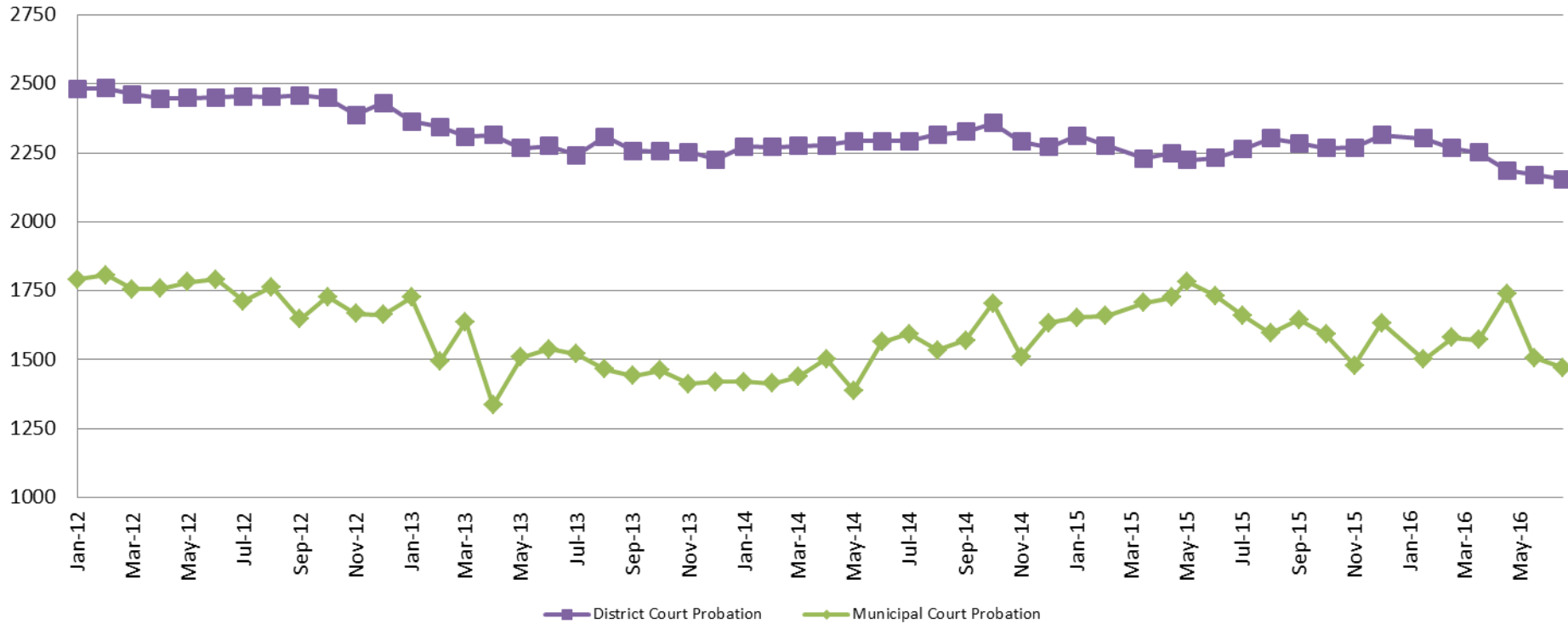
**2013 = 109**  
**2014 = 197**  
**2015 = 118**  
**2016 = 109**

### June YTD Avg.

**2013 = 106**  
**2014 = 101**  
**2015 = 106**  
**2016 = 109**

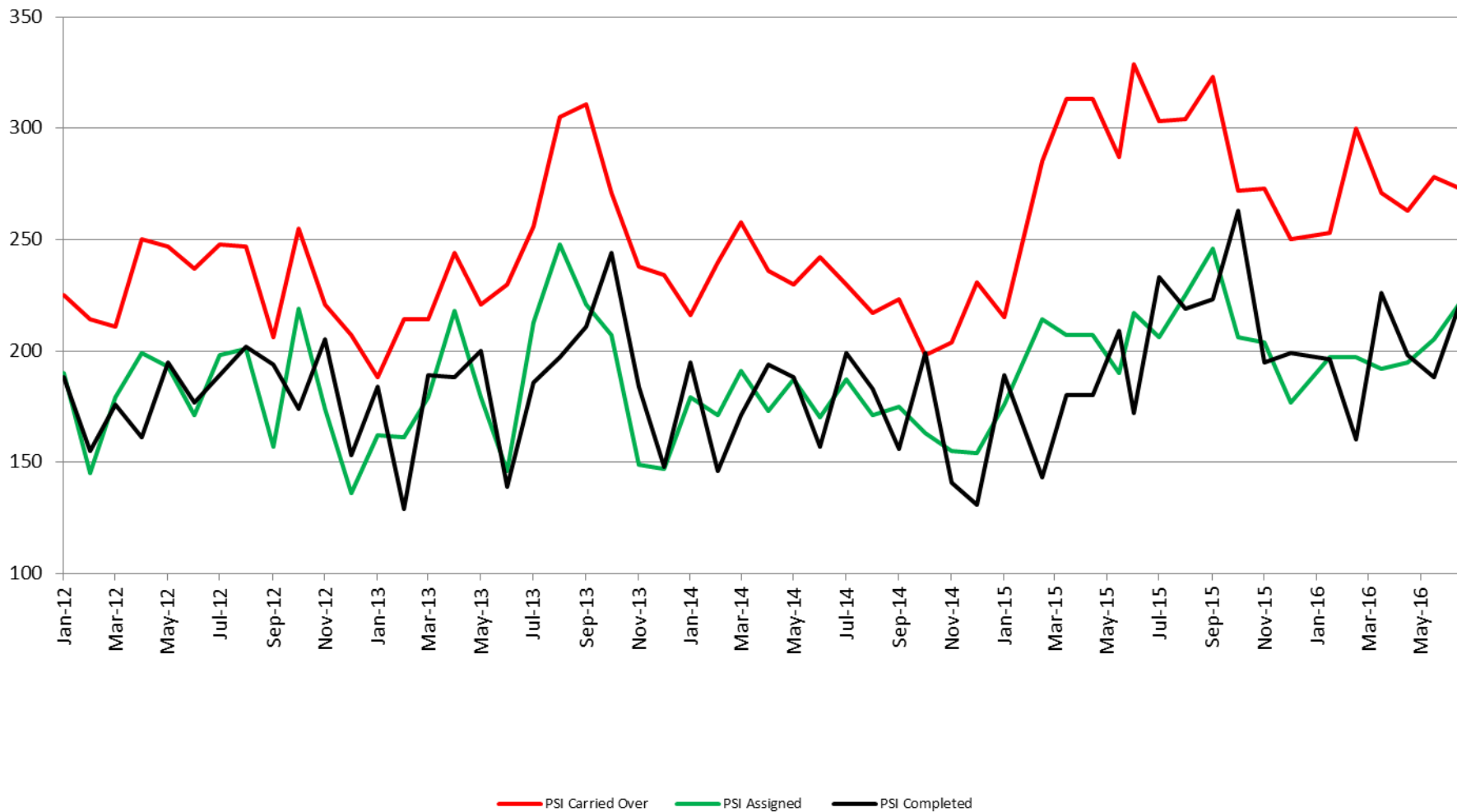


## Probation - Active Caseloads 2012 - present



<b>June</b>	<b>2013</b>	<b>2014</b>	<b>2015</b>	<b>2016</b>
District Court	2,274	2,293	2,232	2,155
Municipal Court	1,538	1,563	1,731	1,472
<b>June YTD Avg.</b>	<b>2013</b>	<b>2014</b>	<b>2015</b>	<b>2016</b>
District Court	2,312	2,280	2,254	2,222
Municipal Court	1,539	1,454	1,710	1,561

# District Court Probation: Pre-Sentence Investigation 2012 - present

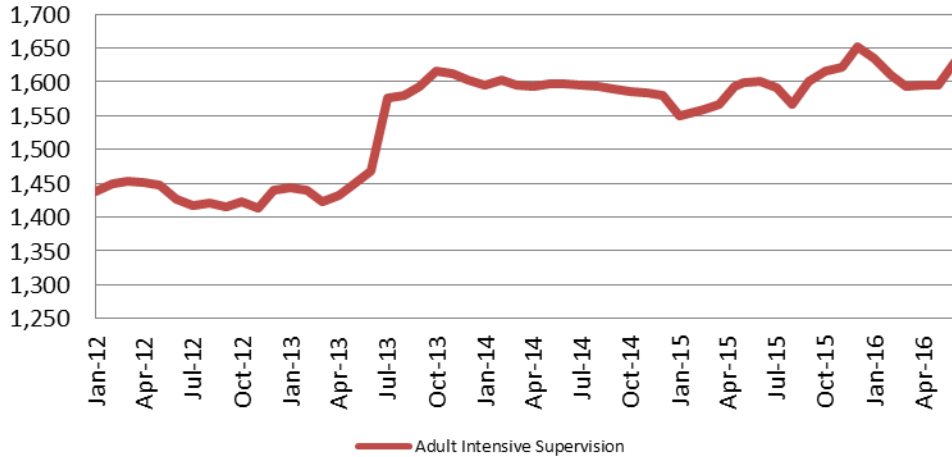


(data obtained from District Court)



# Community Corrections

## Adult Intensive Supervision Probation (AISP) ADP 2012 - present



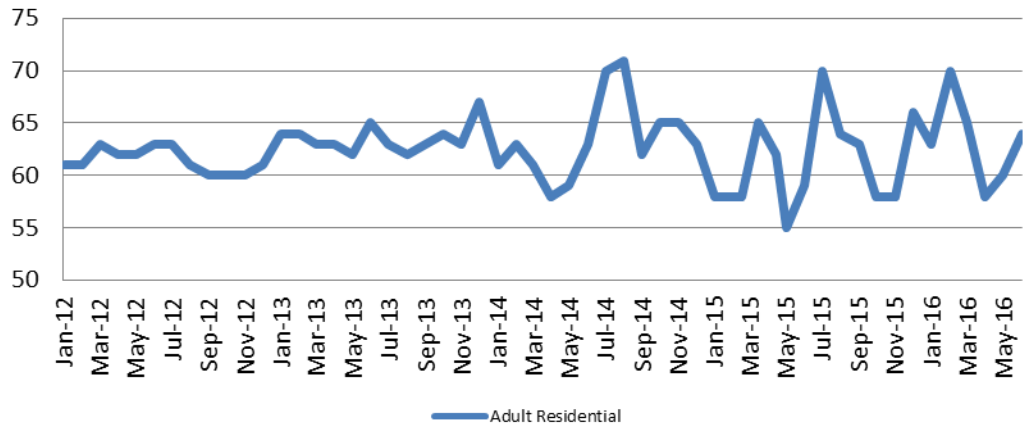
<u>June</u>	<u>June YTD Avg.</u>
2013 = 1,469	2013 = 1,443
2014 = 1,597	2014 = 1,597
2015 = 1,600	2015 = 1,578
2016 = 1,630	2016 = 1,610

(data obtained from SG CO Dept. of Corrections)

\*KDOC changed population count to include drug court, residential and AISP beginning July 2013.

## Adult Residential: ADP 2012 - present

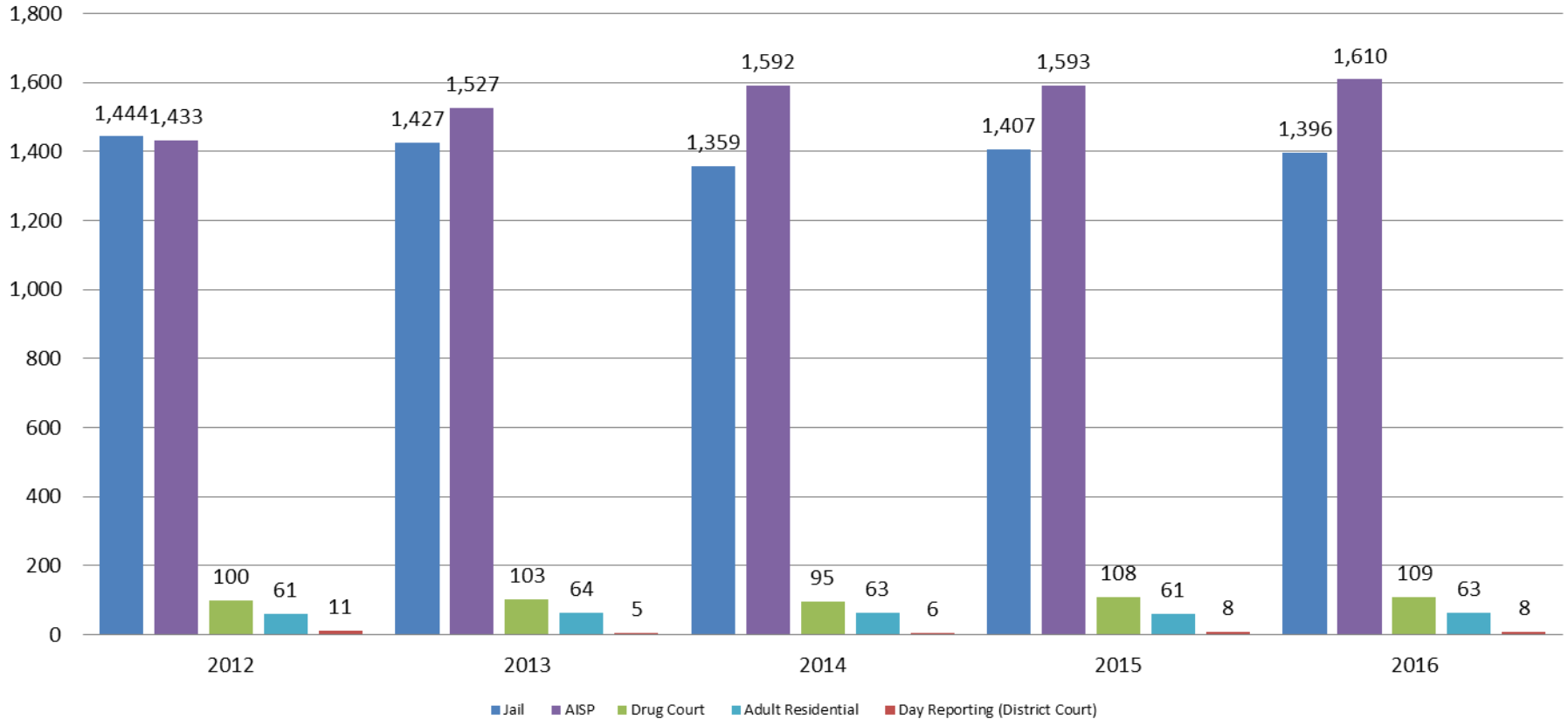
<u>June</u>	<u>June YTD Avg.</u>
2013 = 65	2013 = 64
2014 = 63	2014 = 61
2015 = 59	2015 = 60
2016 = 64	2016 = 63



(data obtained from SG CO Dept. of Corrections)

# Correlation: Total & Sedgwick County Programs (Adult)

## Total Annual ADP: 2012 - Present



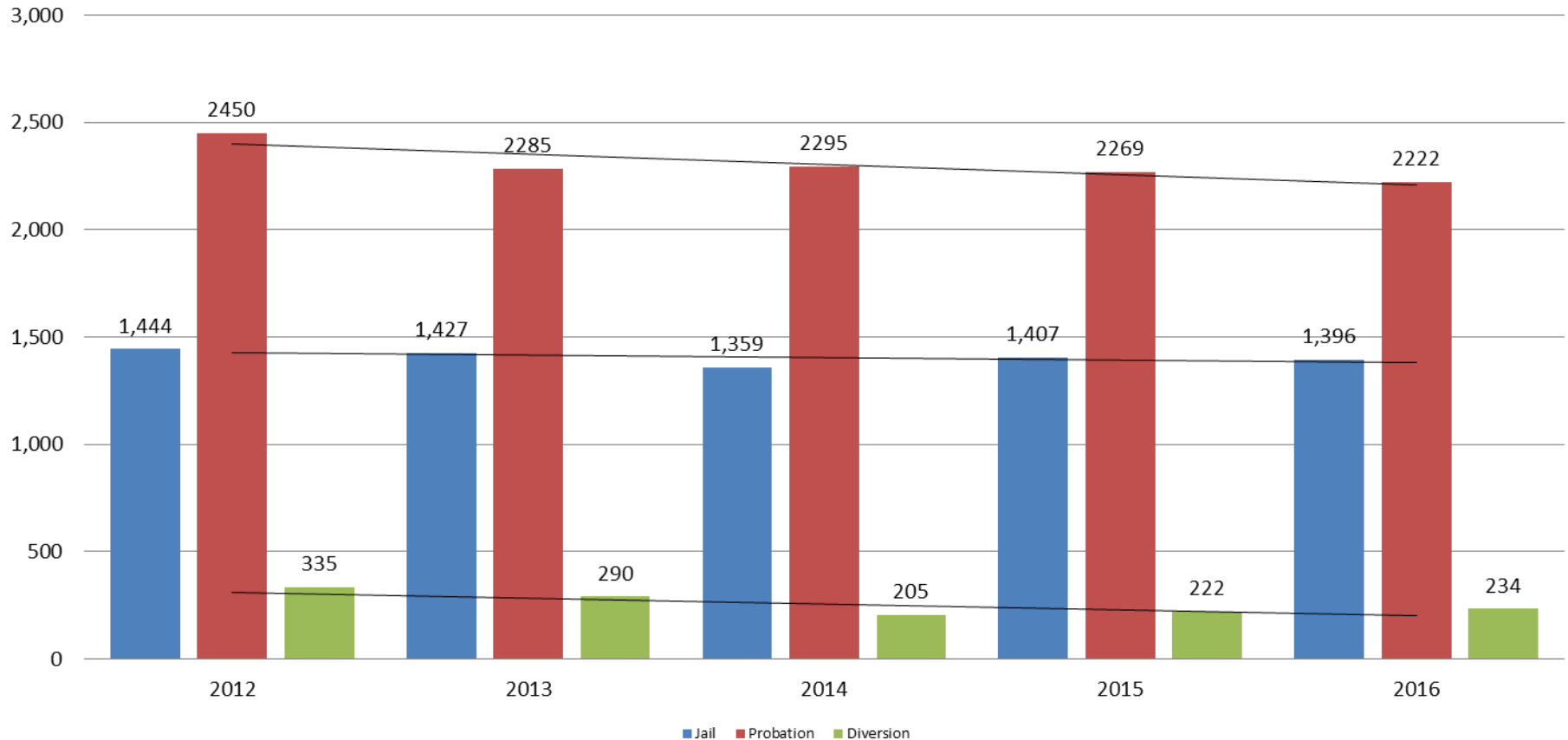
Jail includes individuals in booking, detention, work release and out-of county (combined)

(data obtained from detention facility, SG Dept. of Corrections, Pretrial Services, & CoW)



# Correlation: Total & District Court Programs

## Total Annual ADP: 2012 - Present

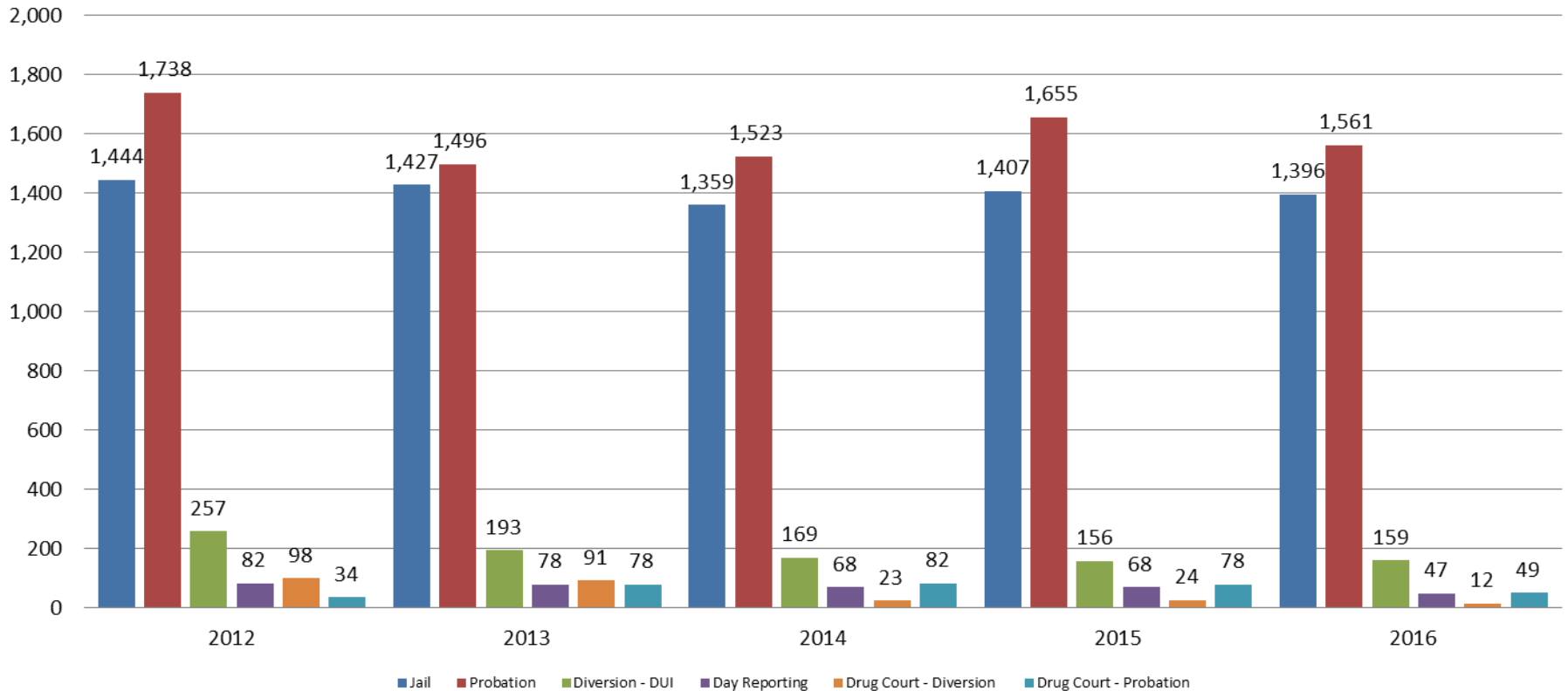


Jail includes individuals in booking, detention, work release and out-of county (combined)



# Correlation: Total & City of Wichita / Municipal Court Programs

## Total Annual ADP: 2012 - present

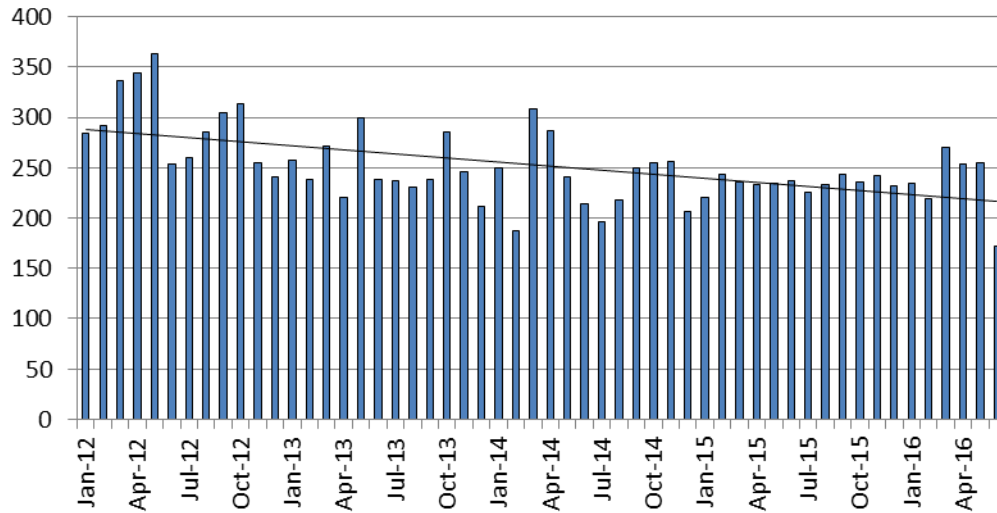


Jail includes individuals in booking, detention, work release and out-of county (combined)



# Juvenile

## JIAC Intakes: 2012 - present



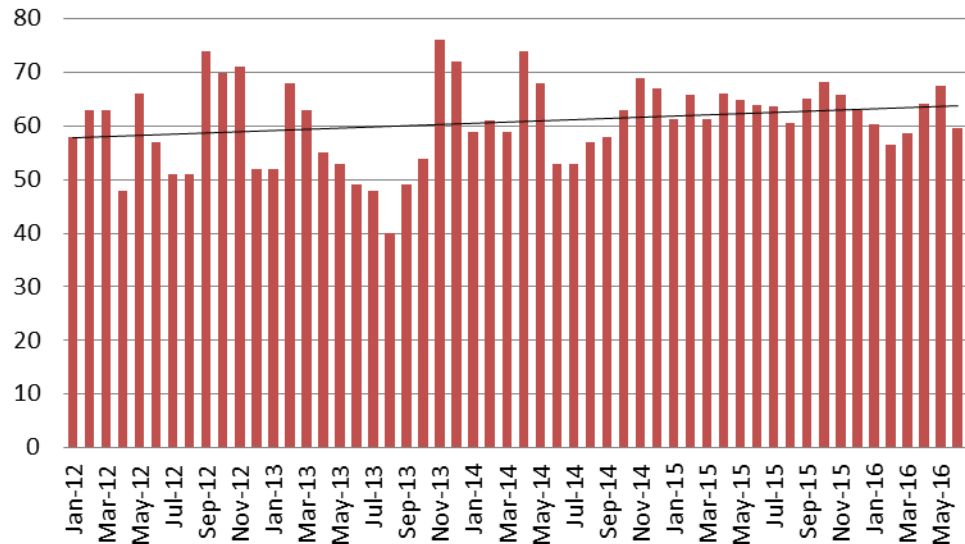
June	June YTD Average
2013 = 238	2013 = 254
2014 = 214	2014 = 248
2015 = 237	2015 = 234
2016 = 172	2016 = 234

(data obtained from SG CO Dept. of Corrections)

June	June YTD Avg.
2013 = 49	2013 = 57
2014 = 53	2014 = 62
2015 = 64	2015 = 64
2016 = 60	2016 = 61

(data obtained from SG CO Dept. of Corrections)

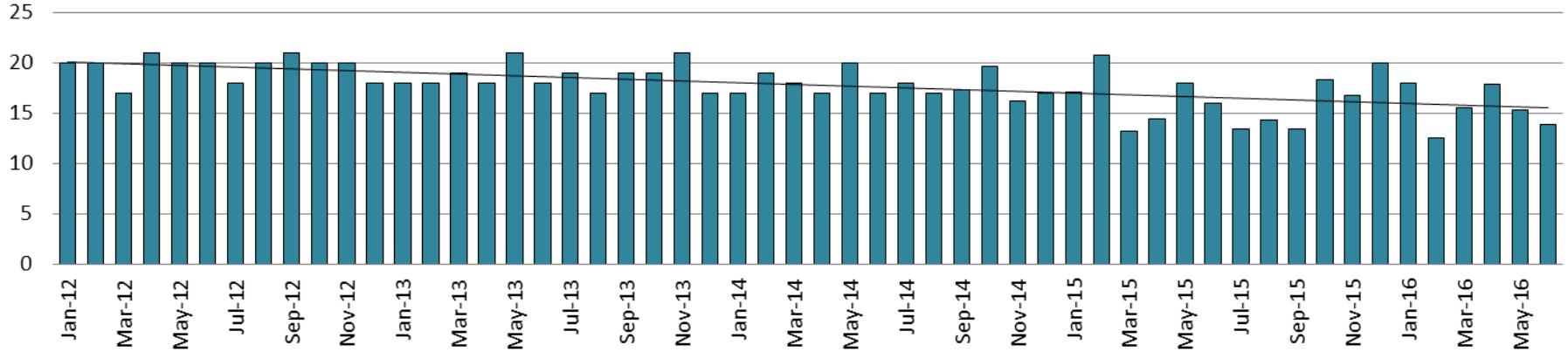
## JDF ADP: 2012 - present



# Juvenile Detention Alternatives

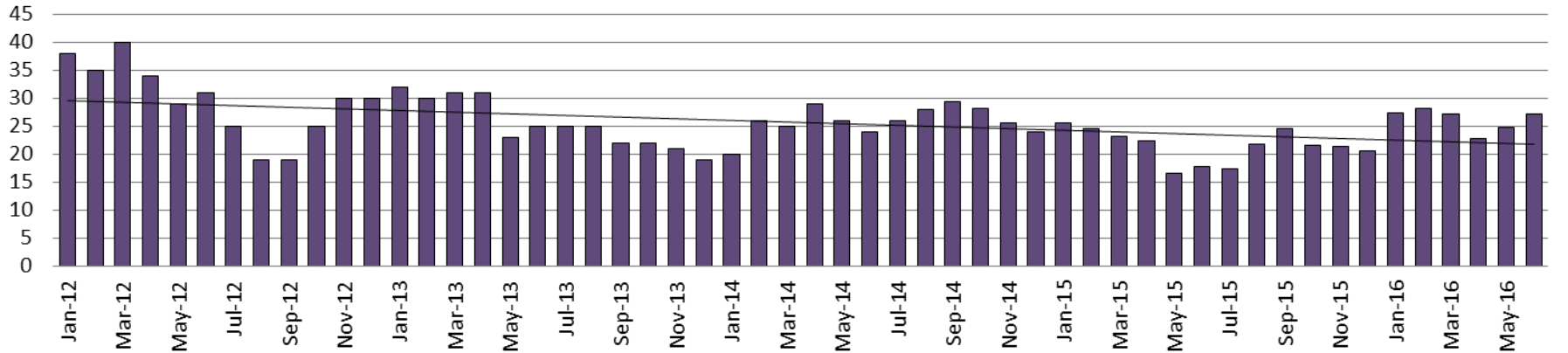
## Juvenile Residential Facility (JRF)

ADP: 2012 - present



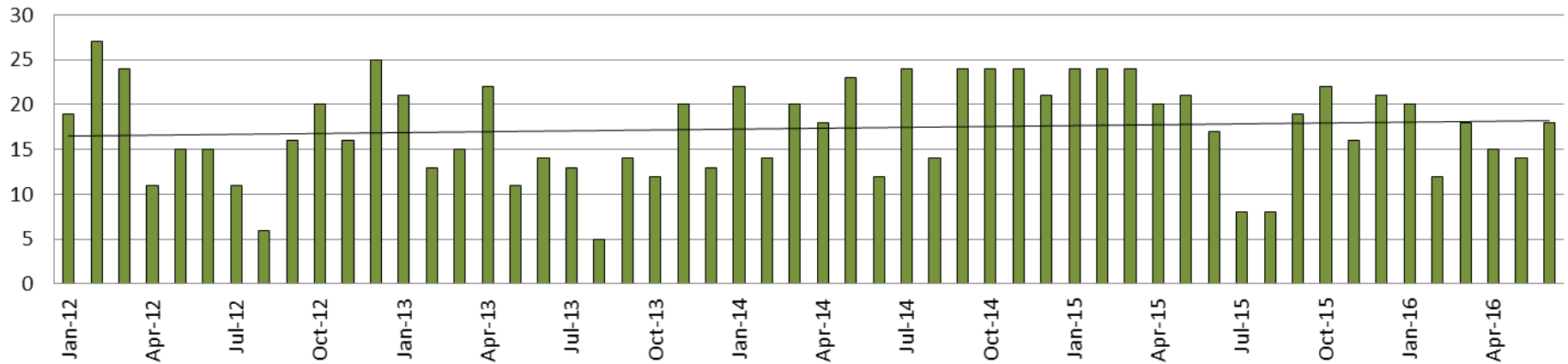
## Home-Based Supervision

ADP: 2012 - present

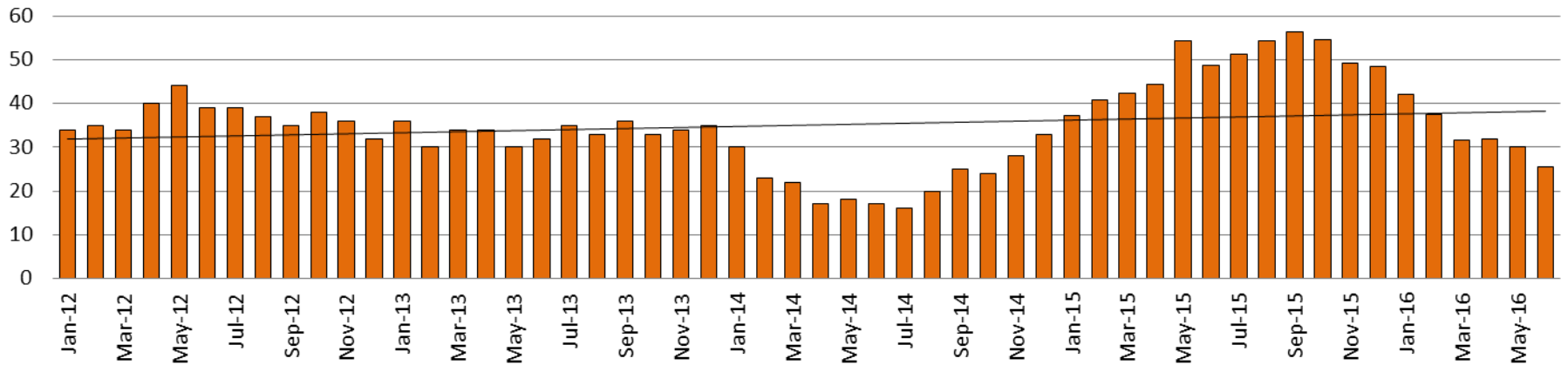


# Juvenile Detention Alternatives

## Weekend Alternative Detention Program 2012 - present



## Detention Advocacy Case Management Services ADP: 2012 - present



# Juvenile Detention Services

<b>June ADP</b>	<b>2013</b>	<b>2014</b>	<b>2015</b>	<b>2016</b>
Juvenile Detention Facility	49	53	64	60
Juvenile Residential Facility	18	17	16	14
Home Based Supervision	25	24	18	27
Detention Advocacy Case Management Services	32	17	49	26
Weekend Alternative Detention Program (total)	14	12	17	18

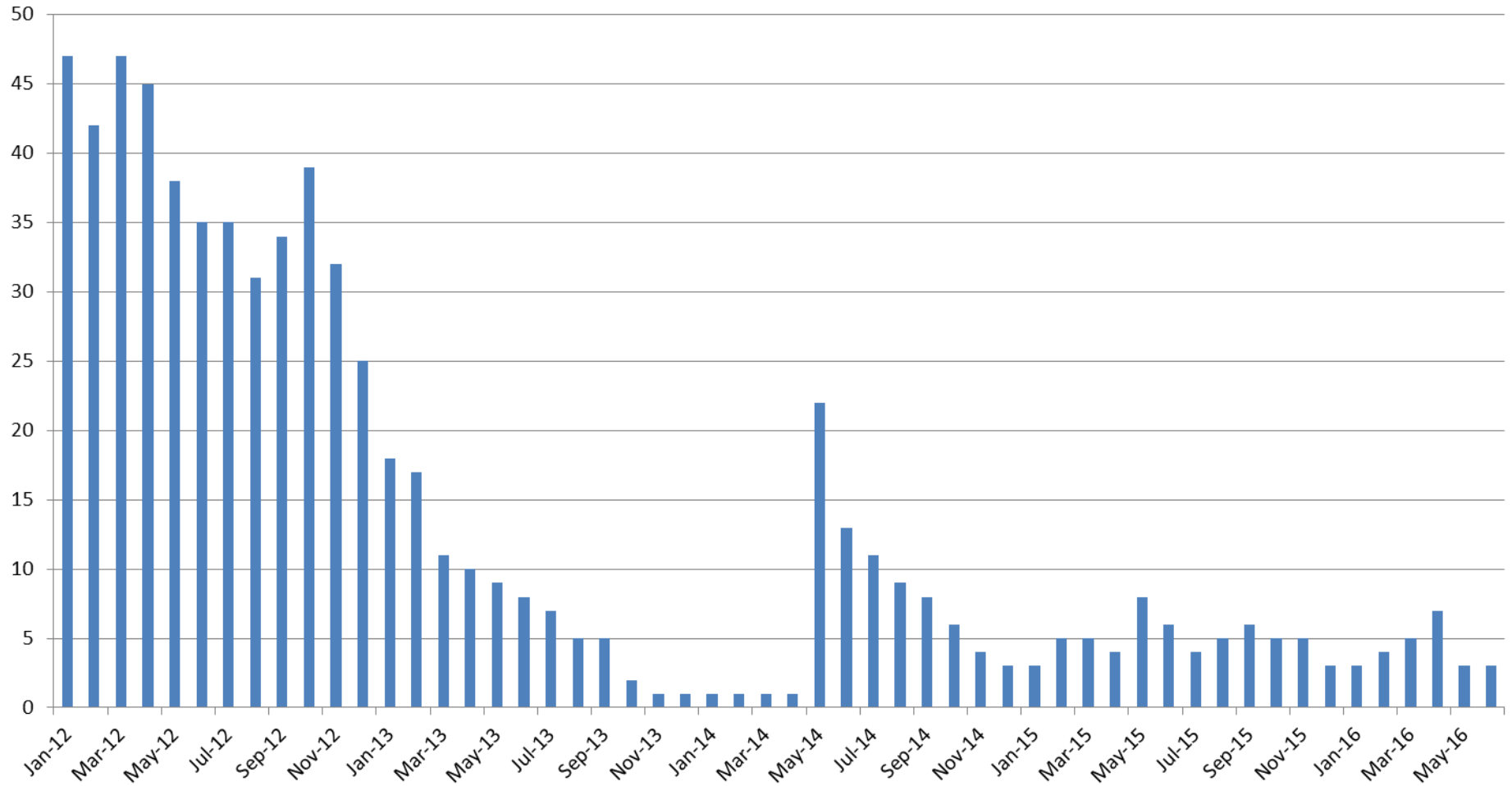
<b>June YTD AVERAGE</b>	<b>2013</b>	<b>2014</b>	<b>2015</b>	<b>2016</b>
Juvenile Detention Facility	57	62	64	61
Juvenile Residential Facility	19	18	17	16
Home Based Supervision	29	25	22	26
Detention Advocacy Case Management Services	33	21	45	33
Weekend Alternative Detention Program	16	18	22	16





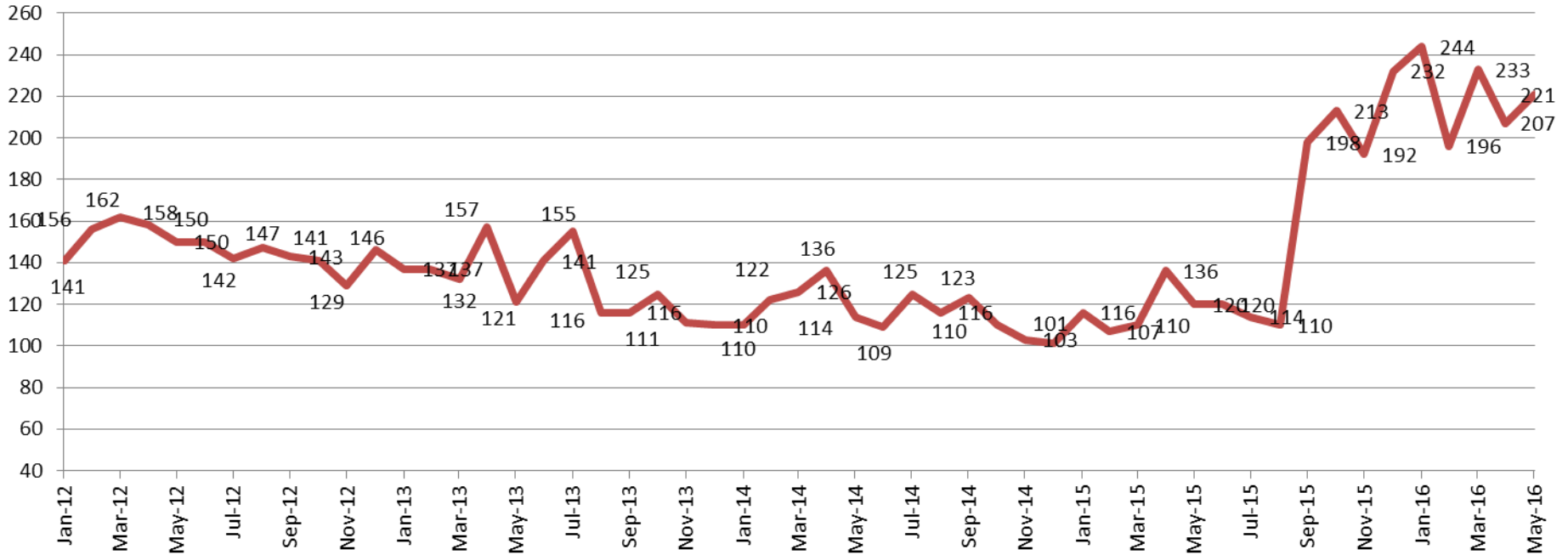
# Monthly Jail Snapshot: May 31, 2016

## BICE Holds 2012-Present



# Monthly Jail Snapshot: May 31, 2016

## Felony Commitments: February 2012 - present



### June:

2012 = 150

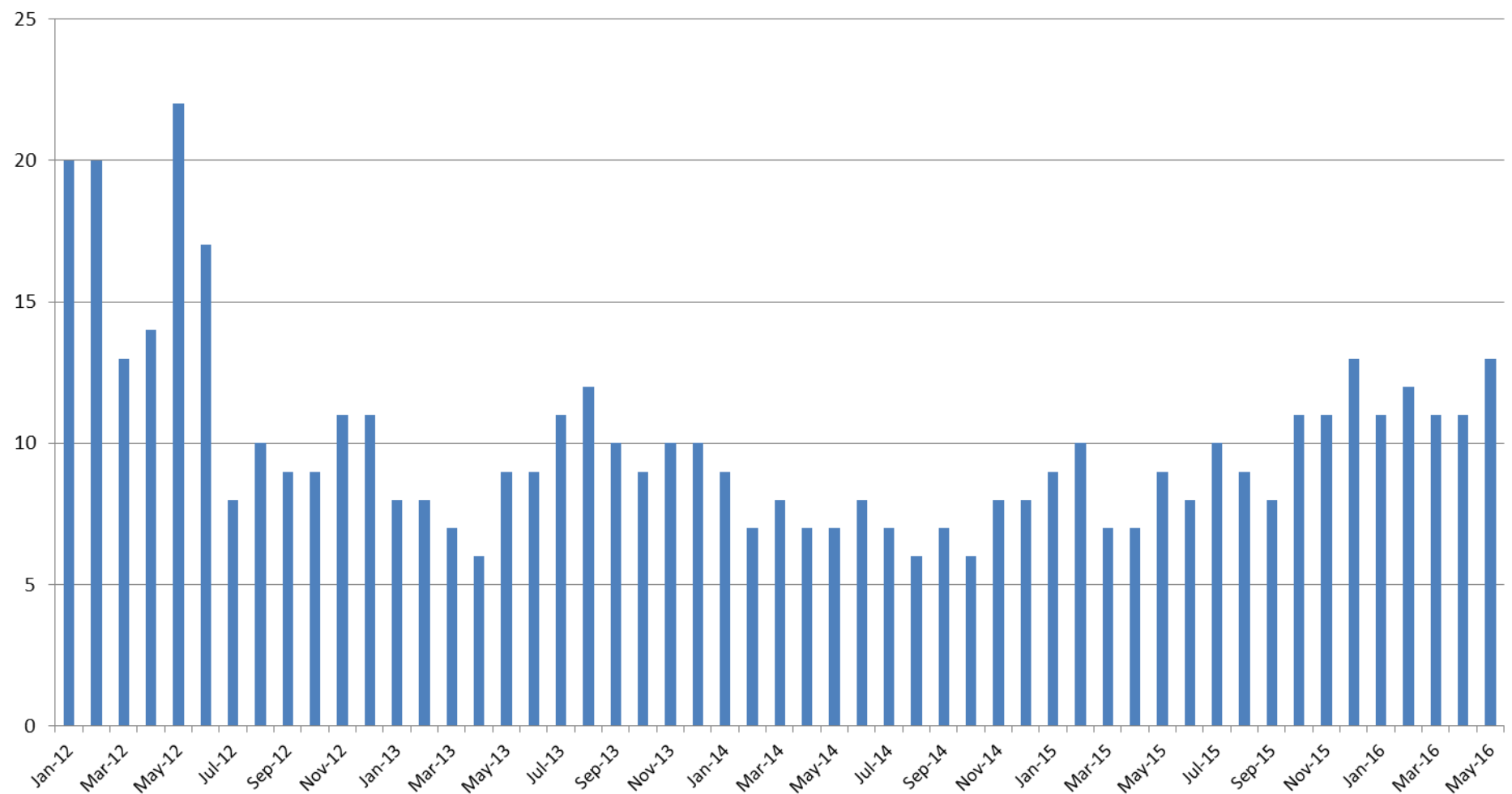
2015 = 120

2013 = 121

2016 = 221

2014 = 114

## Journal Entry Completion (Average Days) January 2013-Present



This data is always reported a month behind

