

Criminal Justice Coordinating Council

Population Report & Program Trends

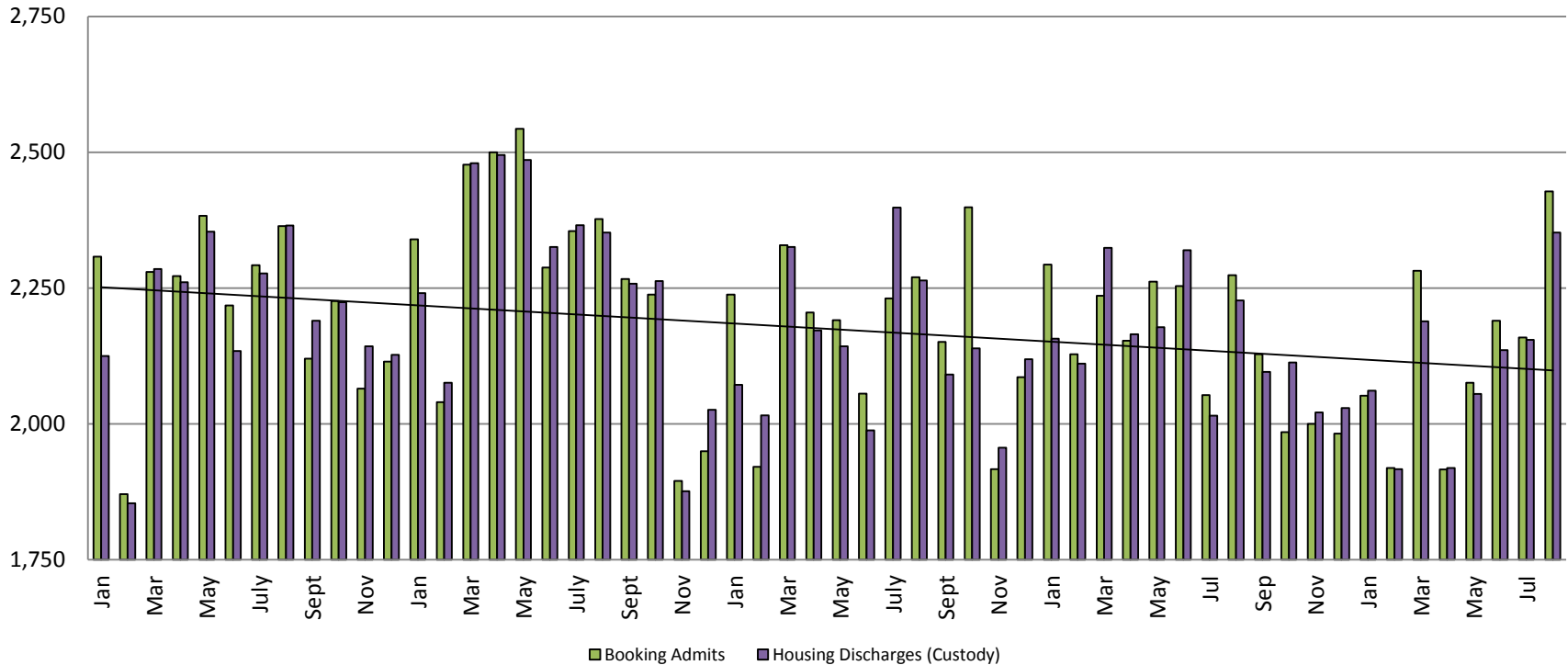
September 2017



Sedgwick County...
working for you

Detention Facility

Booking Admits & Housing Discharges from Custody January 2013 - Present



Housing Discharges for August

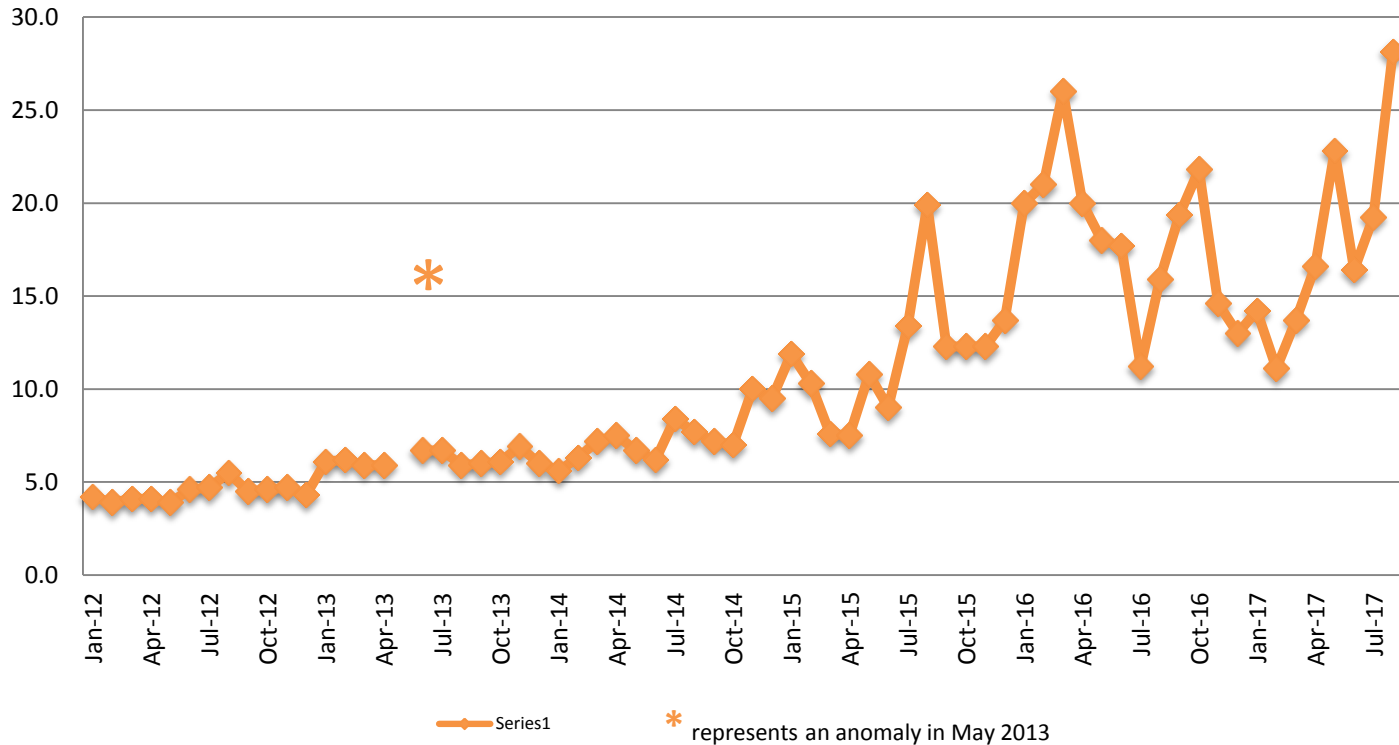
2015 = 2,264
 2016 = 2,227
 2017 = 2,352

Bookings for August

2015 = 2,270
 2016 = 2,274
 2017 = 2,428



Average Length of Stay: Booking (Hours) January 2012 - Present



August

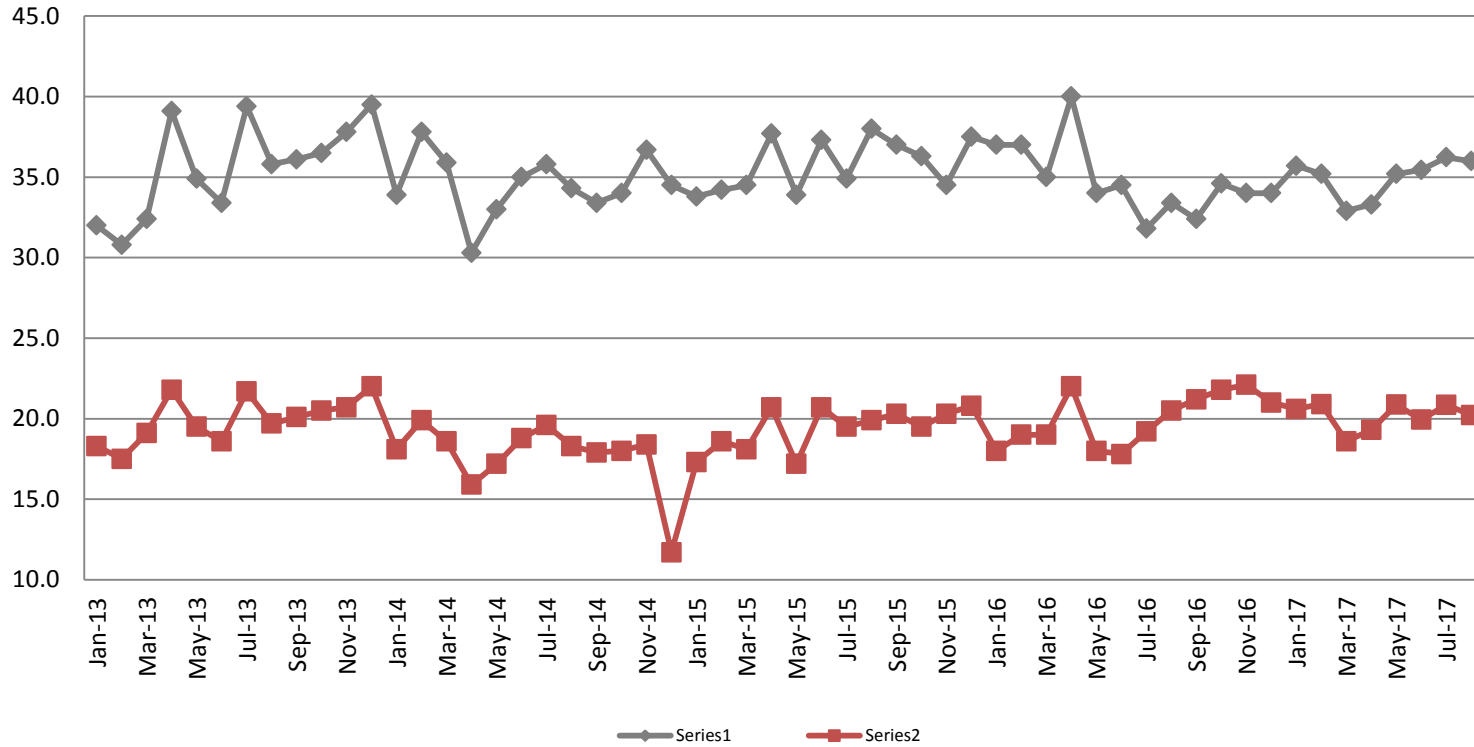
2012 = 5.5	2015 = 19.9
2013 = 5.9	2016 = 15.9
2014 = 7.7	2017 = 28.1

August YTD Avg.

2012 = 4.4	2015 = 11.3
2013 = 7.5	2016 = 18.7
2014 = 7.0	2017 = 17.8



Average Length of Stay: Housing & Combined (Days) January 2013 - Present



August Housing

2013 = 35.8
 2014 = 34.3
 2015 = 38.0
 2016 = 33.4
 2017 = 36.0

August Housing YTD Avg.

2013 = 34.7
 2014 = 34.5
 2015 = 35.5
 2016 = 35.3
 2017 = 35.0

August Combined

2013 = 19.7
 2014 = 18.3
 2015 = 19.9
 2016 = 20.5
 2017 = 20.2

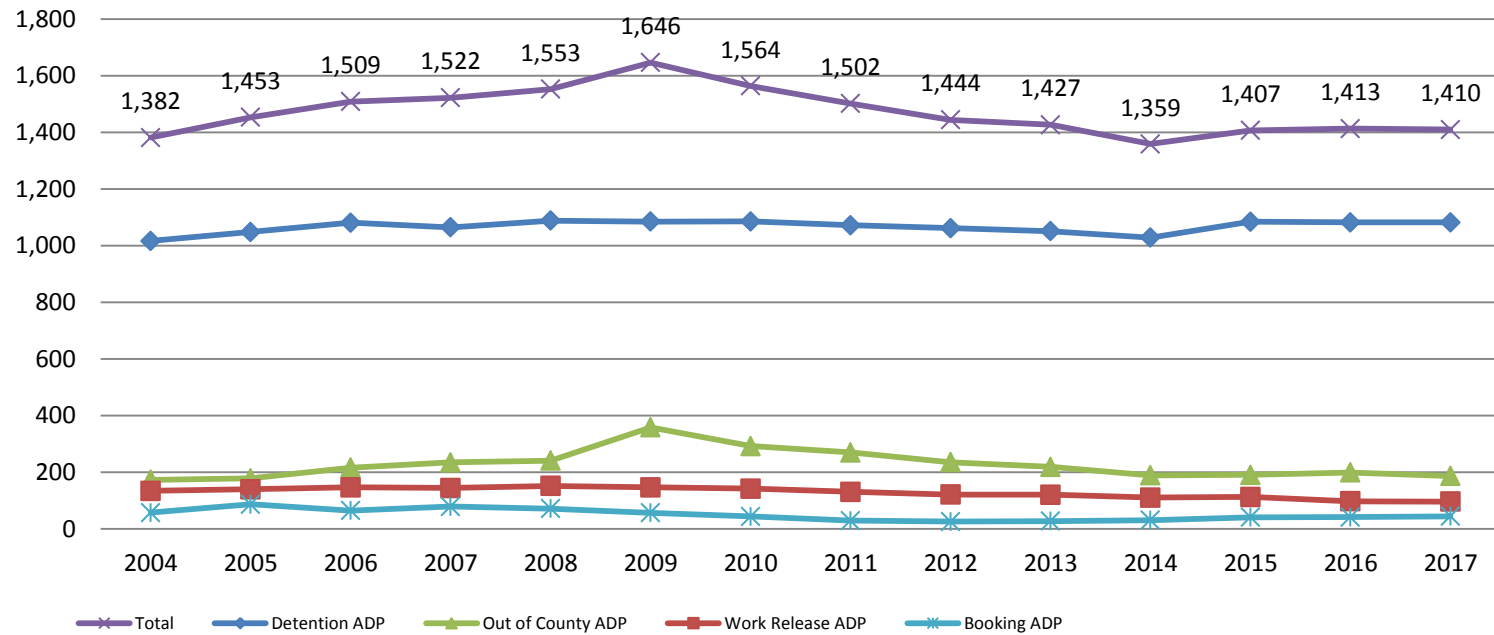
August Combined YTD Avg.

2013 = 19.5
 2014 = 18.3
 2015 = 19.0
 2016 = 19.2
 2017 = 20.2

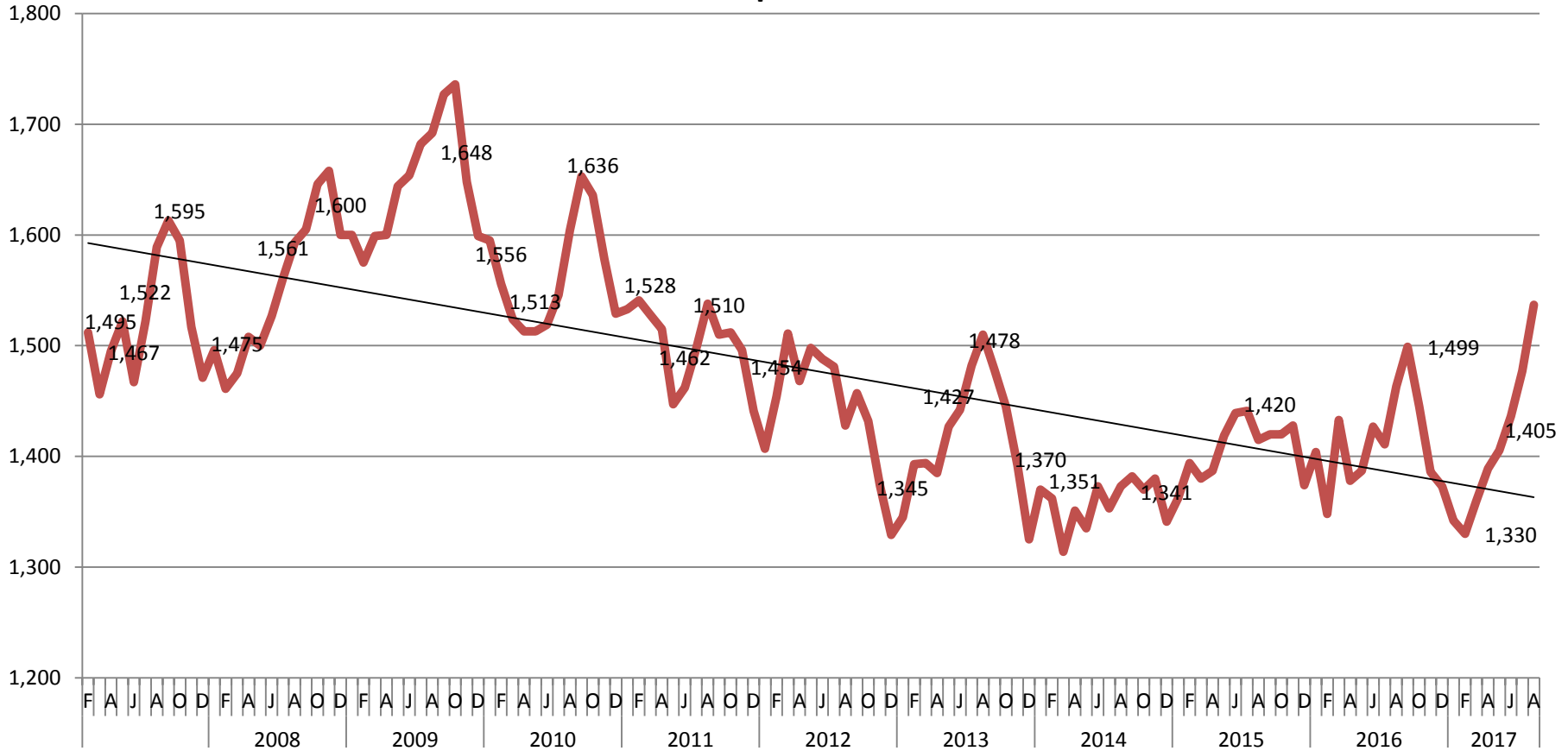


Jail: Annual Average Daily Population (ADP)

TRENDS: Booking, Detention, Work Release, & Out of County
Annual ADP: 2004 - present



TOTAL MONTHLY ADP: JAIL (Booking, Detention Facility, Work Release, & Out of County) 2007 - present



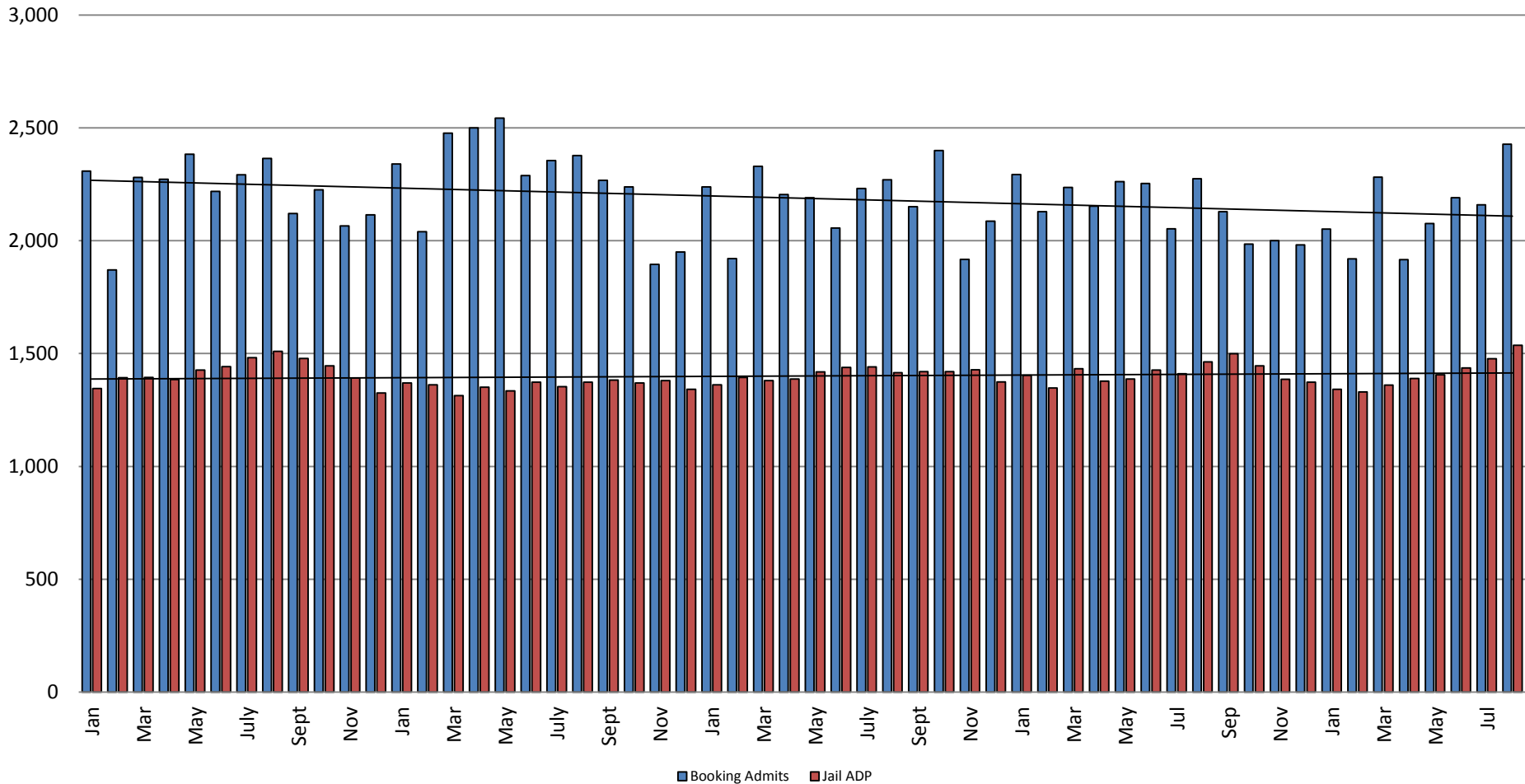
This slide shows total monthly ADP for individuals in booking, detention, work release and out-of county (combined)



Sedgwick County...
working for you

(data obtained from detention facility)

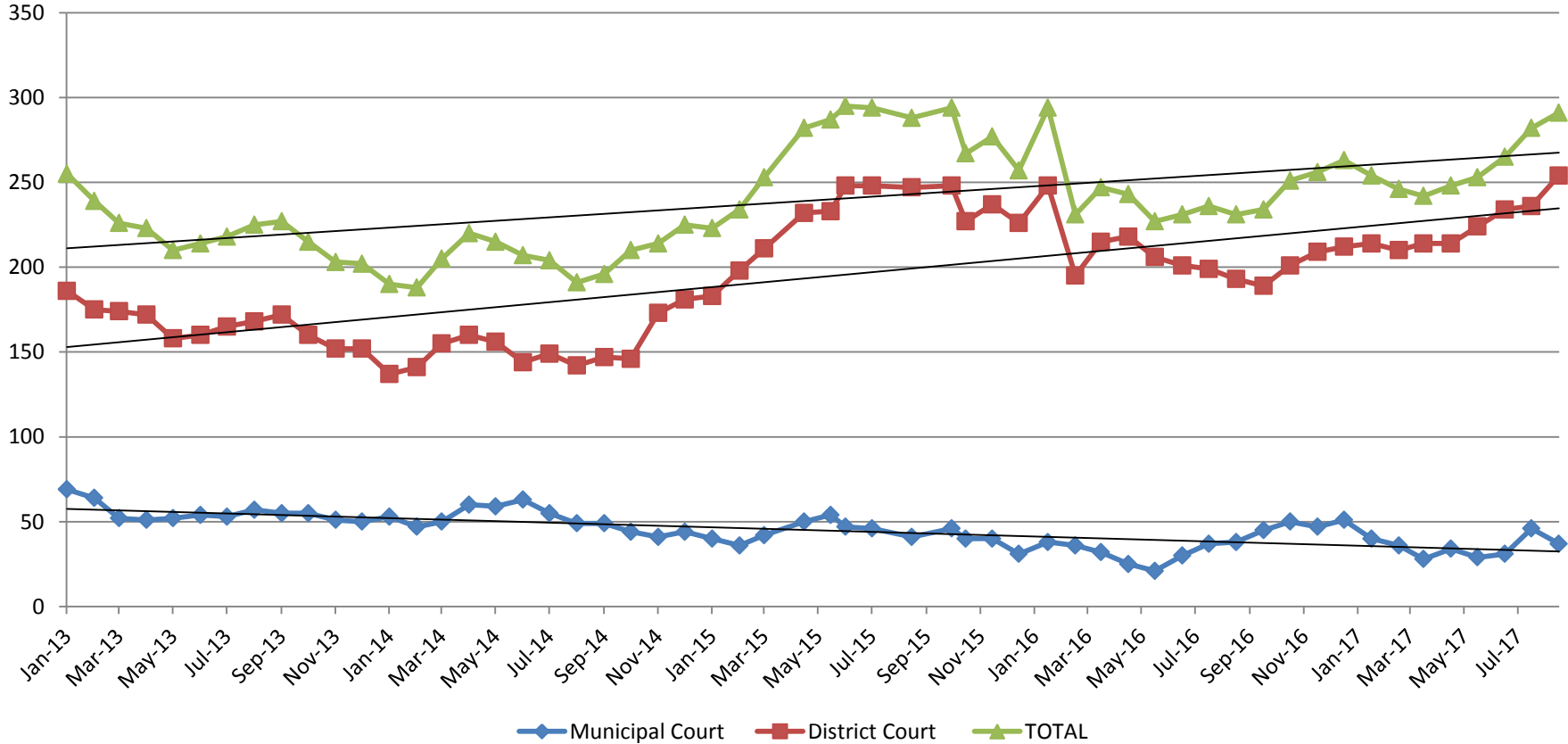
Booking Admits & Total Monthly ADP (Jail): 2013 - present



Jail includes individuals in booking, detention, work release and out-of county (combined)

(data obtained from detention facility)

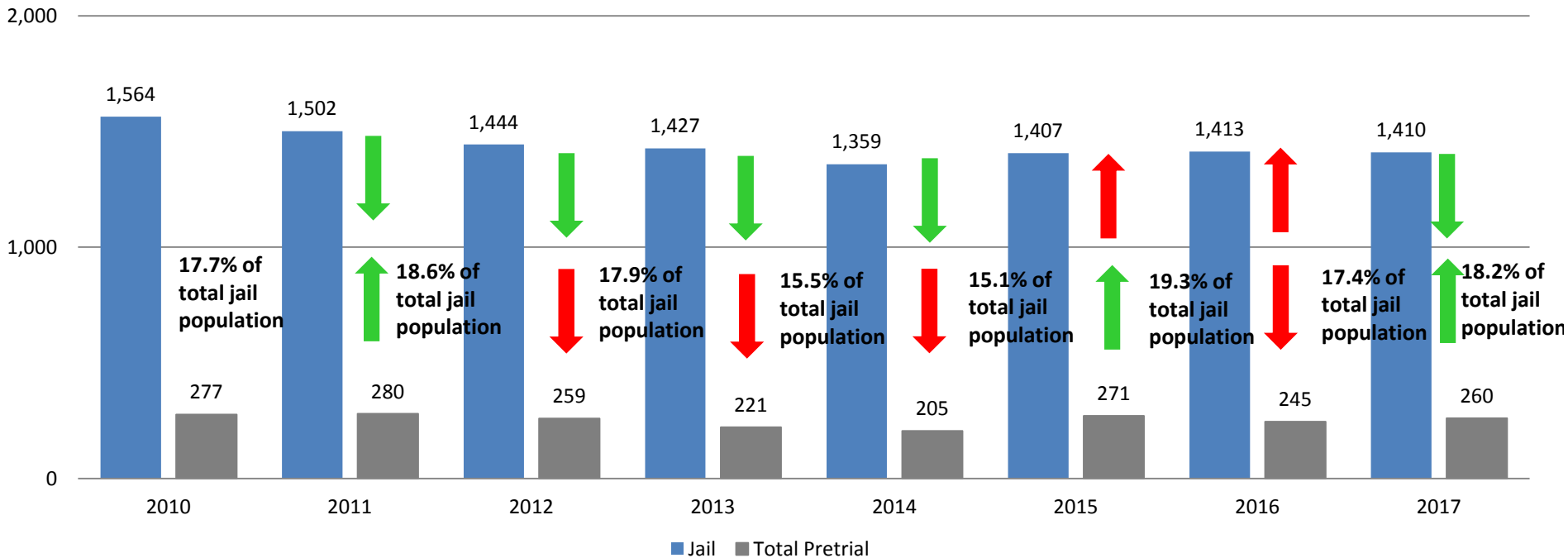
Pretrial Services Program (PSP) Monthly ADP: January 2013 - Present



August	2013	2014	2015	2016	2017	August YTD Avg.	2013	2014	2015	2016	2017
Municipal Court	57	49	41	38	37	Municipal Court	57	55	45	32	35
District Court	168	142	247	193	254	District Court	170	148	225	209	225
TOTAL	225	191	288	231	291	TOTAL	226	203	270	243	260

Correlation: Total & PSP

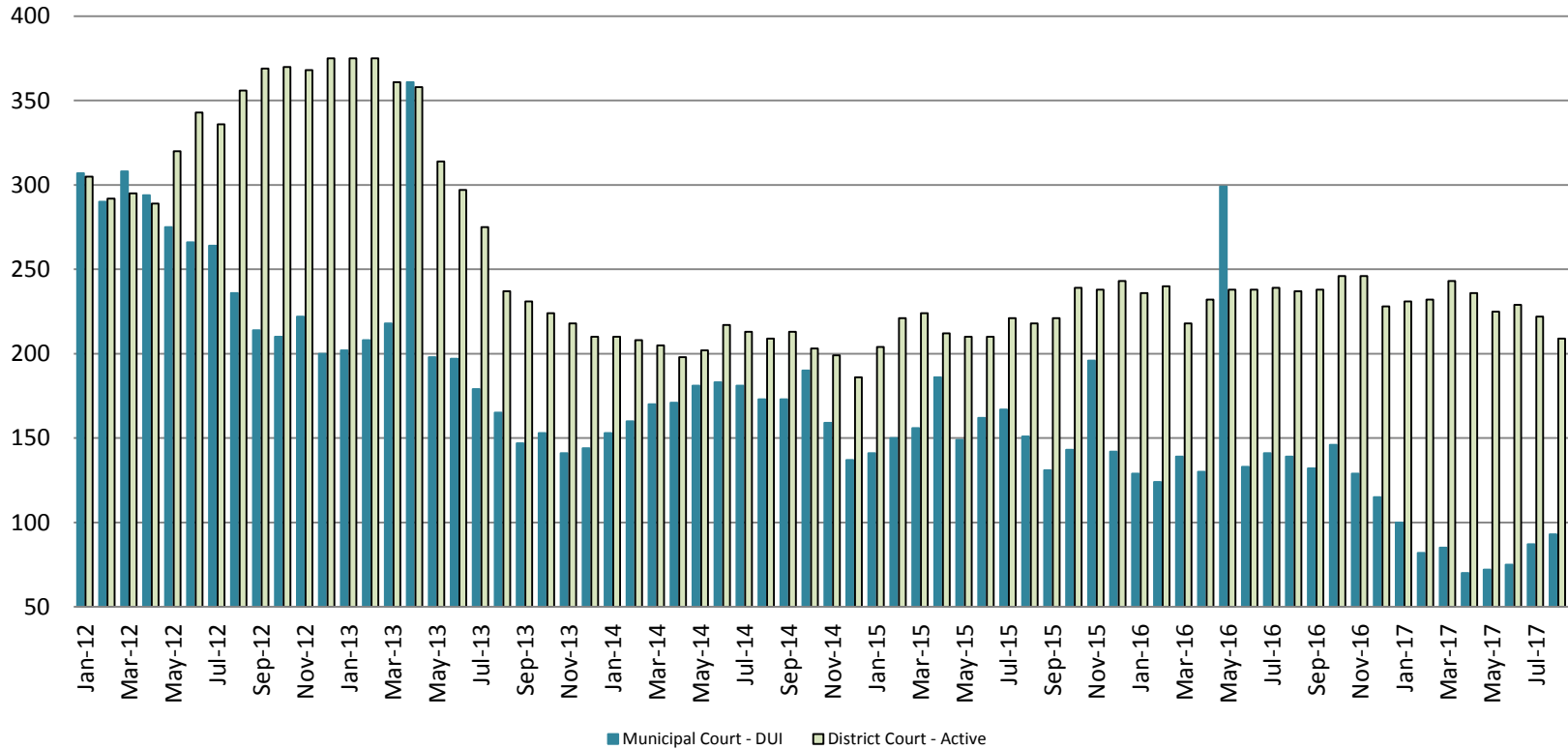
Total Annual ADP: 2010 - Present



Arrows represent the overall increase/decrease of the population from year to year

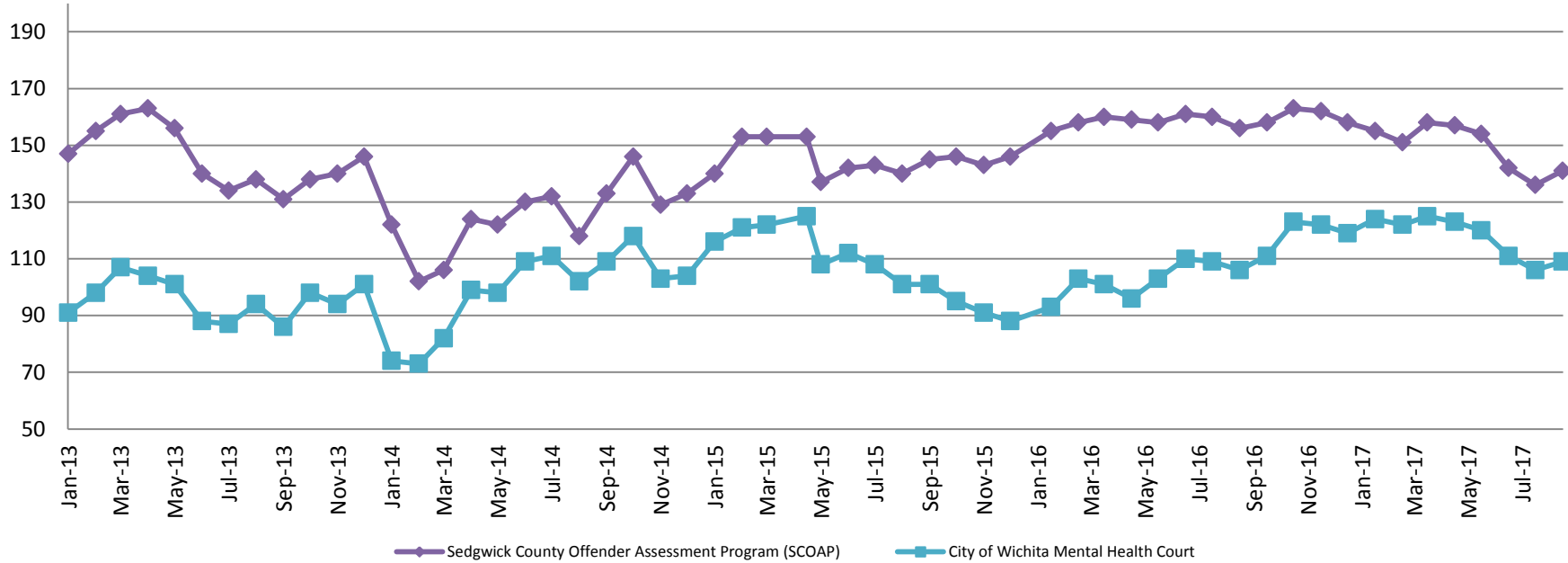
Jail includes individuals in booking, detention, work release and out-of county (combined)

Diversion - Active Caseload January 2012 - Present



August	2013	2014	2015	2016	2017	August YTD Avg.	2013	2014	2015	2016	2017
Municipal Court- DUI	165	173	151	139	93	Municipal Court	216	172	158	154	83
District Court- Active	237	209	218	237	209	District Court	324	208	215	235	228

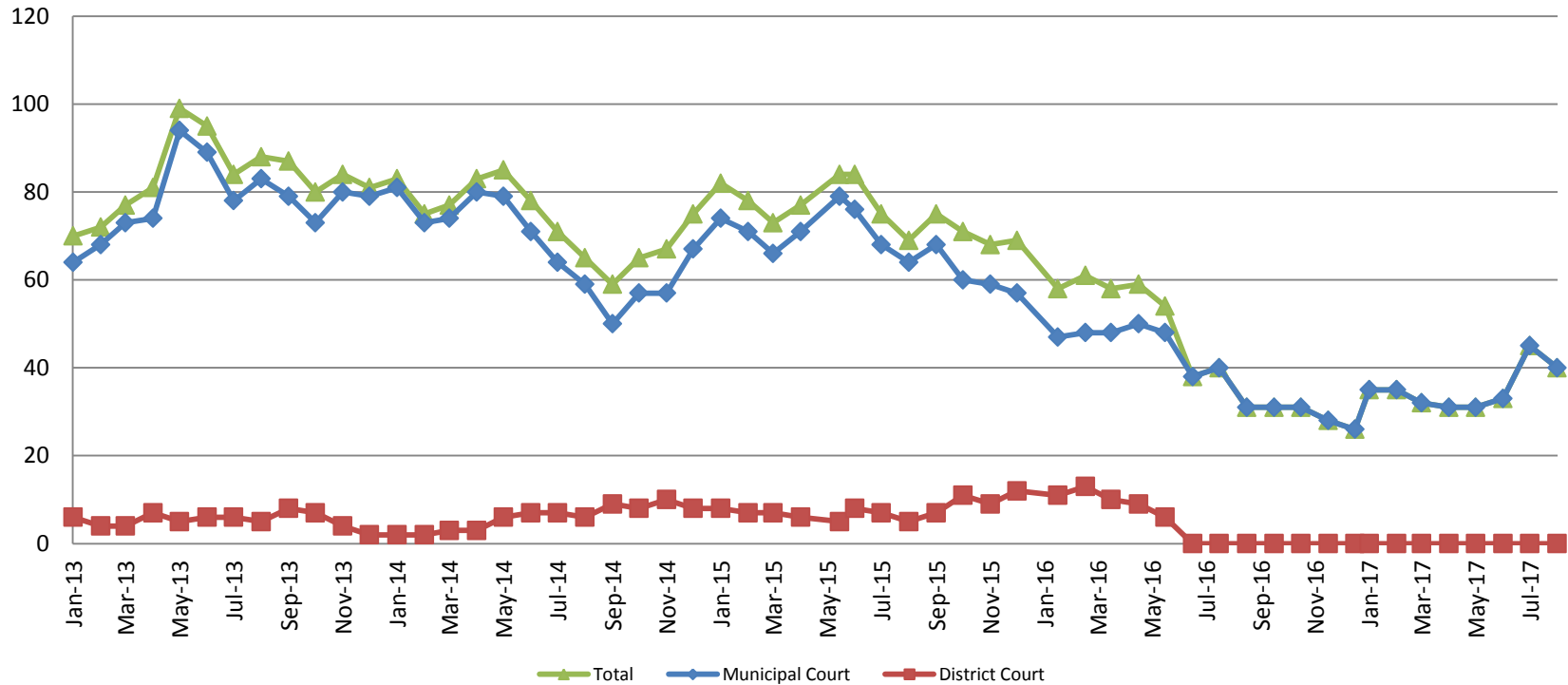
Mental Health - ADP 2013 - present



August:	2013	2014	2015	2016	2017
SCOAP	138	118	140	156	141
CoW – MH Court	94	102	101	106	109
August YTD Avg.	2013	2014	2015	2016	2017
SCOAP	149	120	145	158	149
CoW – MH Court	96	94	114	104	118



Day Reporting - Active Caseload 2013-present

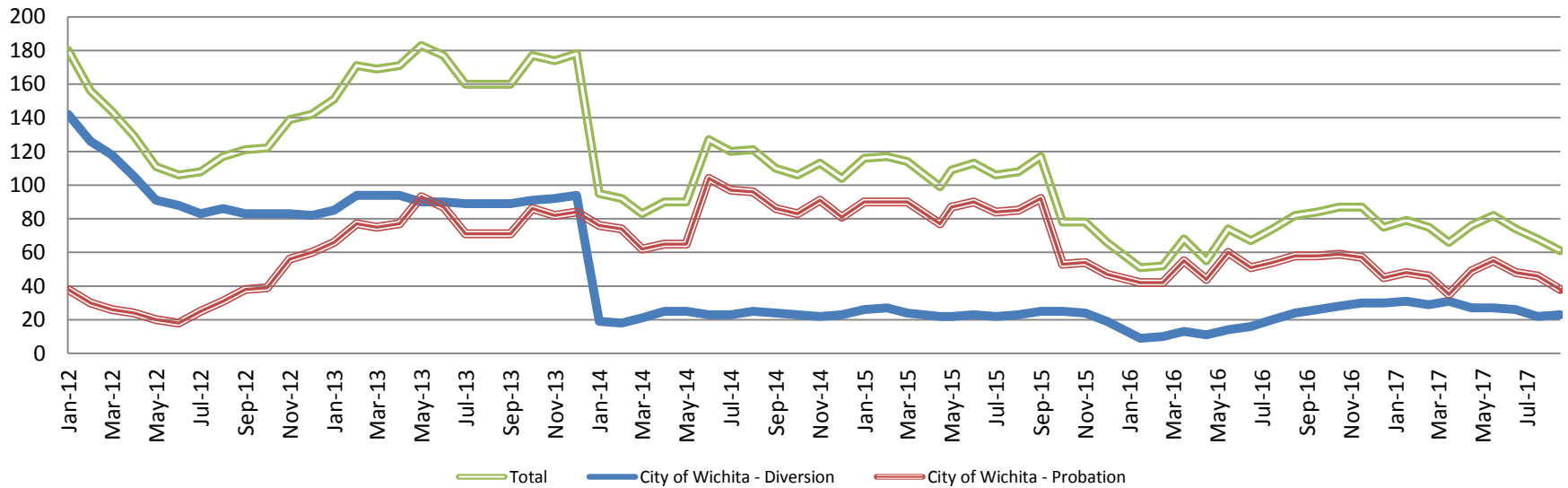


August	2013	2014	2015	2016	2017
Municipal Court	83	59	64	31	40
District Court	5	6	5	0*	0*
TOTAL	88	65	69	31	40
August YTD Avg.	2013	2014	2015	2016	2017
Municipal Court	78	73	71	44	35
District Court	5	5	7	0*	0*
TOTAL	83	77	78	50	35



Drug Court - City of Wichita

ADP: 2012 - present



August CoW Diversion

2013 = 89
 2014 = 25
 2015 = 23
 2016 = 24
 2017 = 23

August YTD Avg.

2013 = 91
 2014 = 22
 2015 = 24
 2016 = 15
 2017 = 27

August CoW Probation

2013 = 71
 2014 = 96
 2015 = 85
 2016 = 58
 2017 = 38

August YTD Avg.

2013 = 77
 2014 = 80
 2015 = 87
 2016 = 51
 2017 = 46

August CoW Total

2013 = 160
 2014 = 121
 2015 = 108
 2016 = 82
 2017 = 61

August YTD Avg.

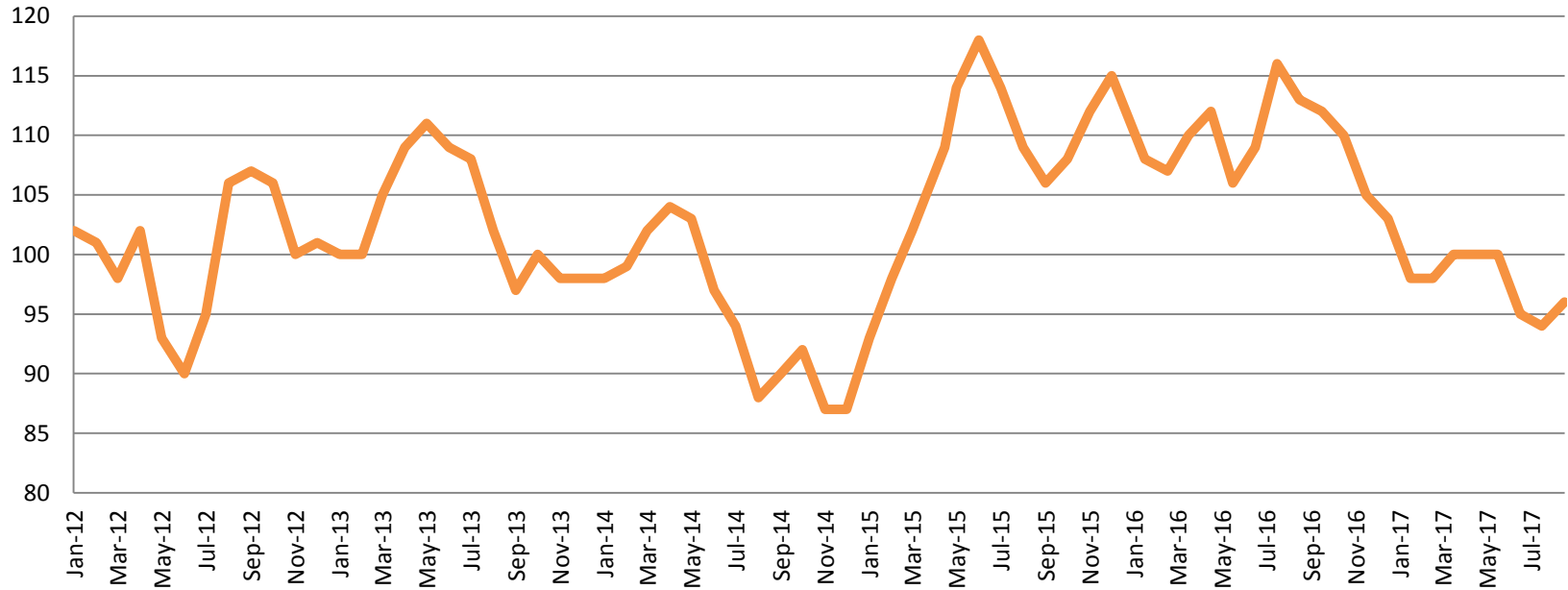
2013 = 168
 2014 = 102
 2015 = 110
 2016 = 65
 2017 = 73

(data obtained from CoW)



Sedgwick County...
 working for you

Drug Court - Sedgwick County ADP: 2012 - present



August SG CO

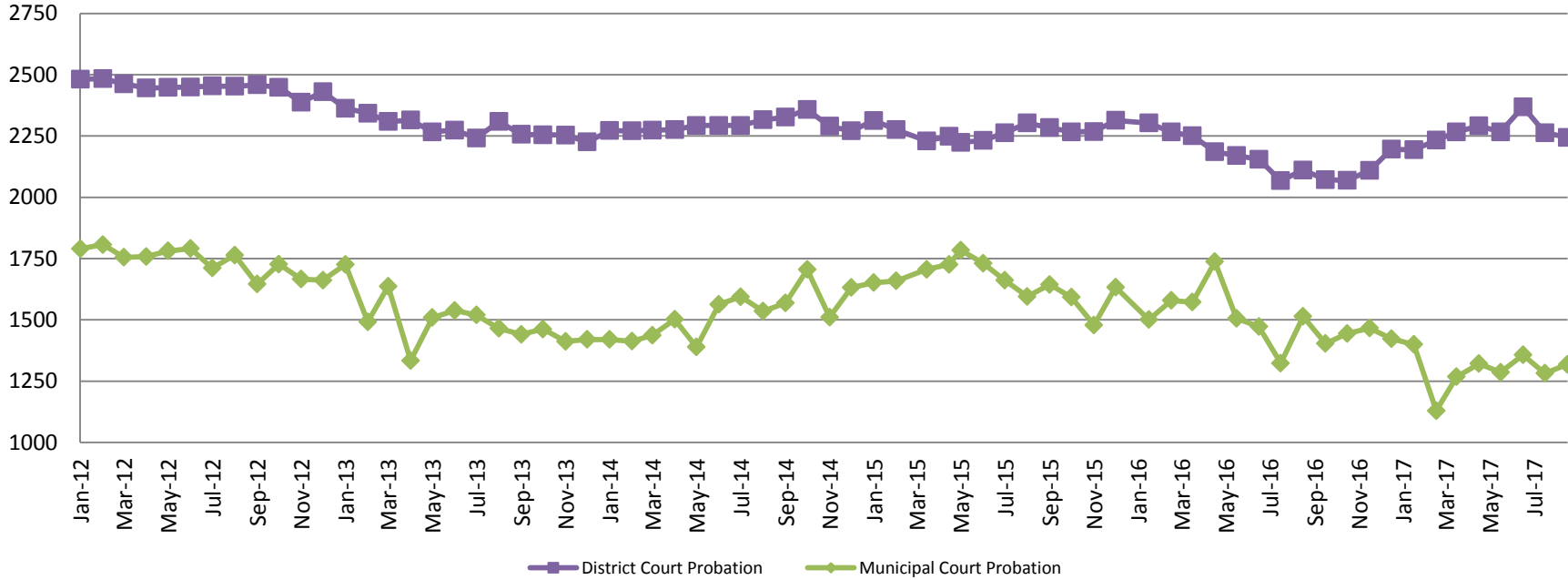
2013 = 102
2014 = 88
2015 = 109
2016 = 113
2017 = 96

August YTD Avg.

2013 = 106
2014 = 98
2015 = 107
2016 = 110
2017 = 98

(data obtained from Pretrial Services)

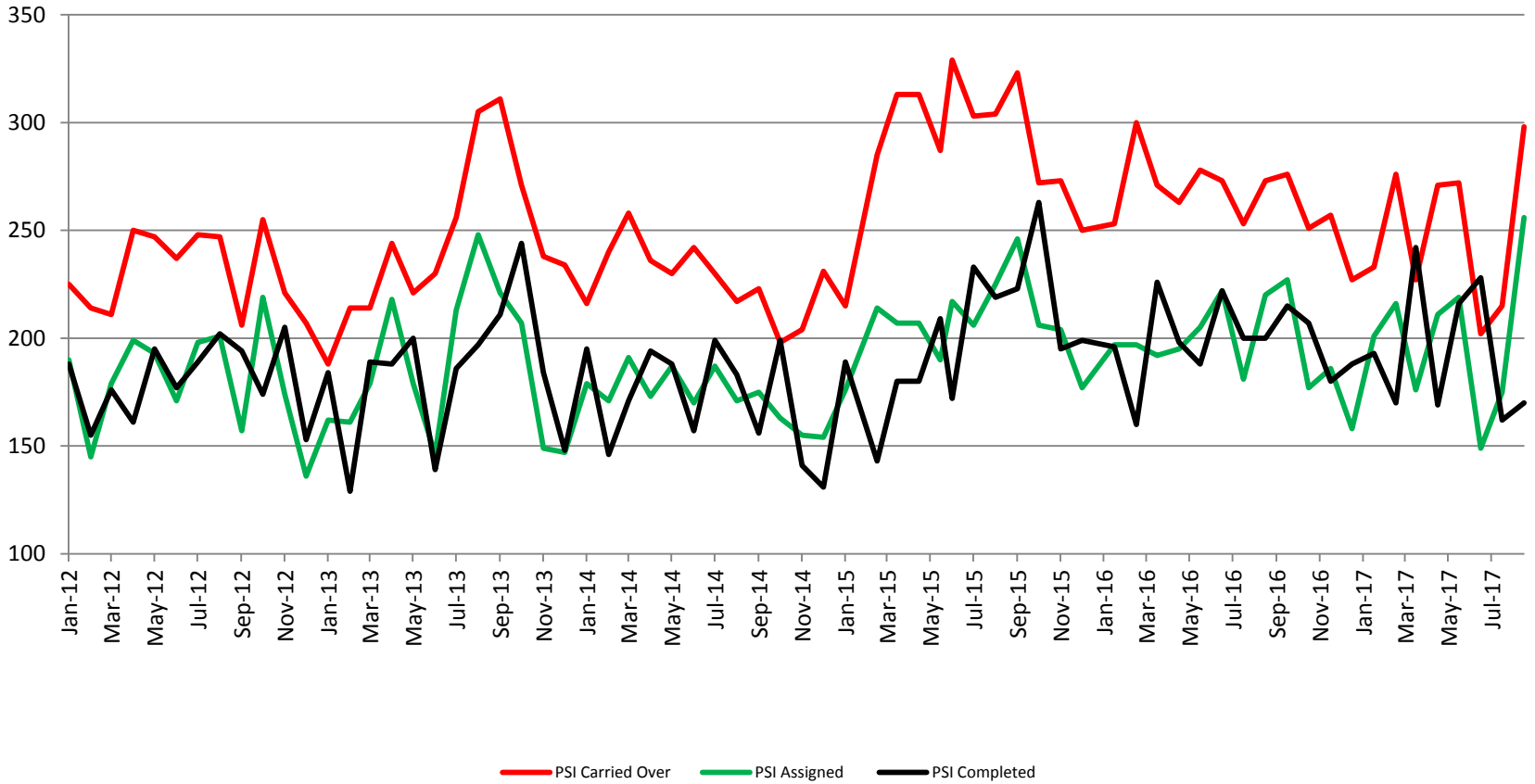
Probation - Active Caseloads 2012 - present



August	2013	2014	2015	2016	2017
District Court	2,309	2,316	2,303	2,111	2,244
Municipal Court	1,465	1,535	1,595	1,514	1,318
August YTD Avg.	2013	2014	2015	2016	2017
District Court	2,303	2,286	2,261	2,189	2,266
Municipal Court	1,528	1,482	1,689	1,526	1,295

(data obtained from CoW & District Court)

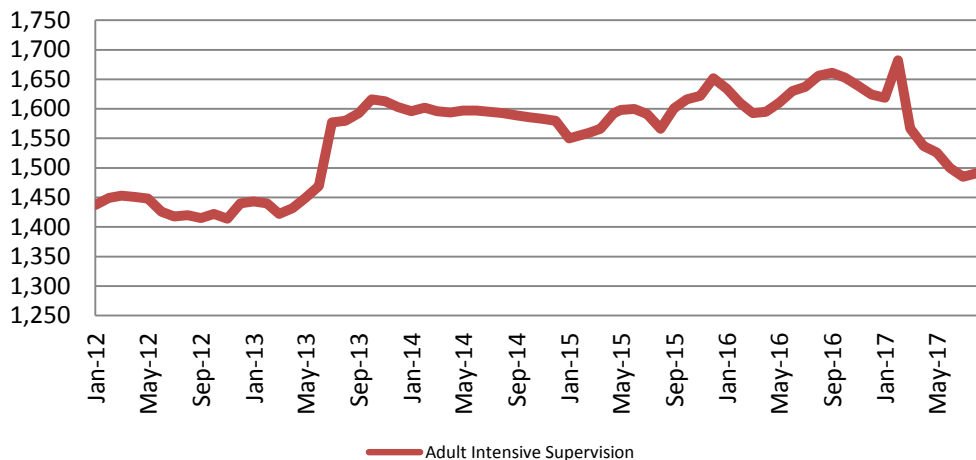
District Court Probation: Pre-Sentence Investigation 2012 - present



(data obtained from District Court)

Community Corrections

Adult Intensive Supervision Probation (AISP) ADP 2012 - present



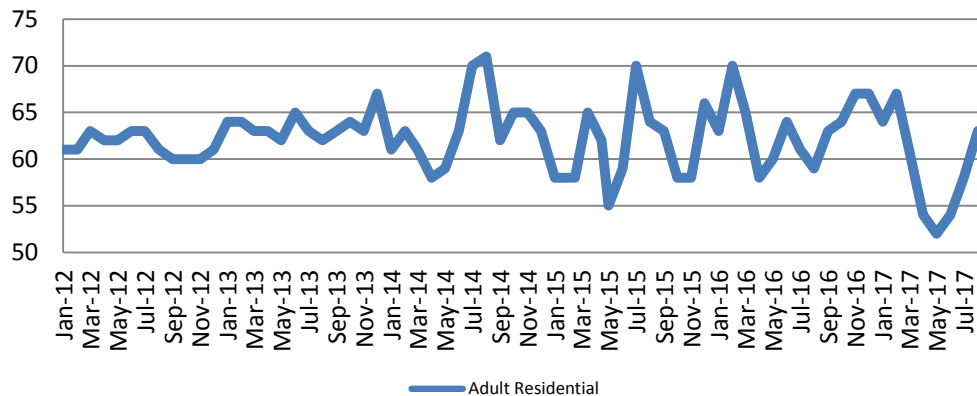
<u>August</u>	<u>August YTD Avg.</u>
2013 = 1,580	2013 = 1,477
2014 = 1,593	2014 = 1,596
2015 = 1,566	2015 = 1,578
2016 = 1,656	2016 = 1,621
2017 = 1,491	2017 = 1,551

(data obtained from SG CO Dept. of Corrections)

*KDOC changed population count to include drug court, residential and AISP beginning July 2013.

Adult Residential: ADP 2012 - present

<u>August</u>	<u>August YTD Avg.</u>
2013 = 62	2013 = 63
2014 = 71	2014 = 63
2015 = 64	2015 = 61
2016 = 59	2016 = 63
2017 = 63	2017 = 59



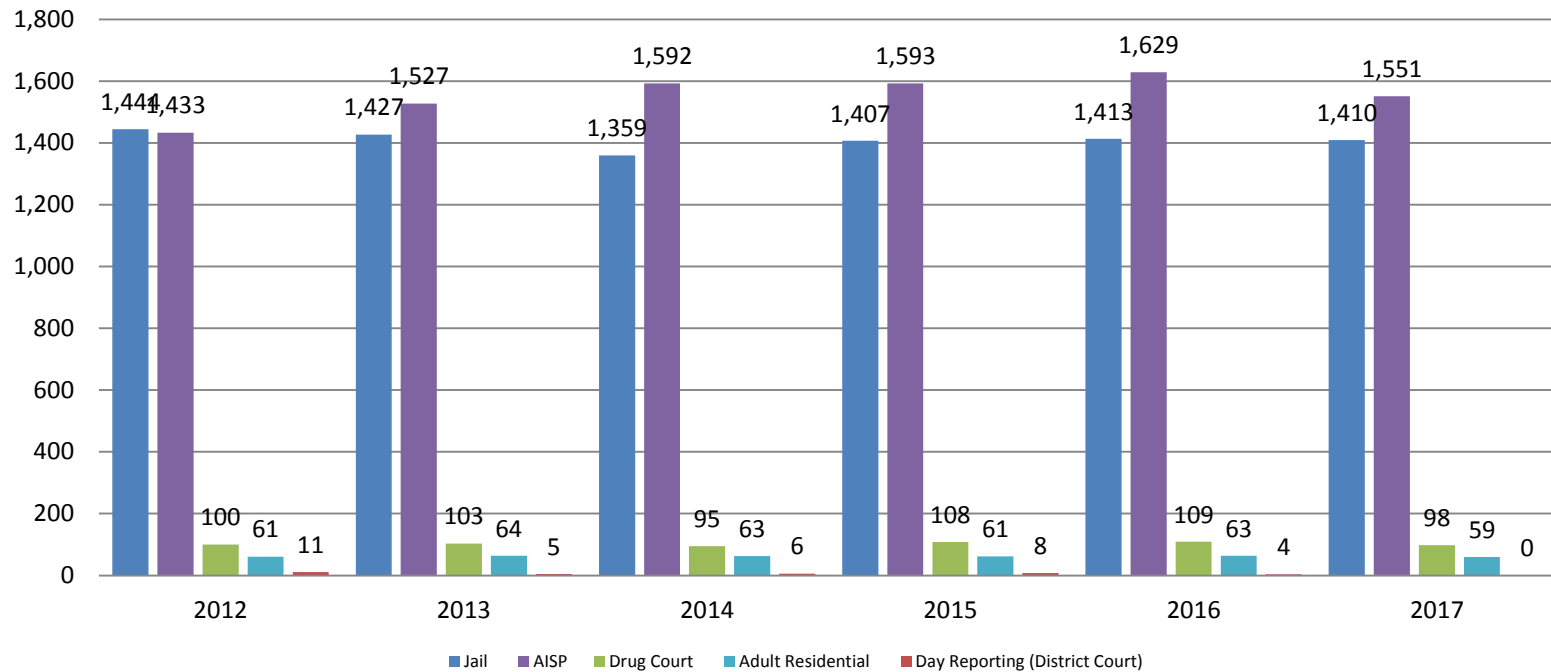
(data obtained from SG CO Dept. of Corrections)



Sedgwick County...
working for you

Correlation: Total & Sedgwick County Programs (Adult)

Total Annual ADP: 2012 - Present



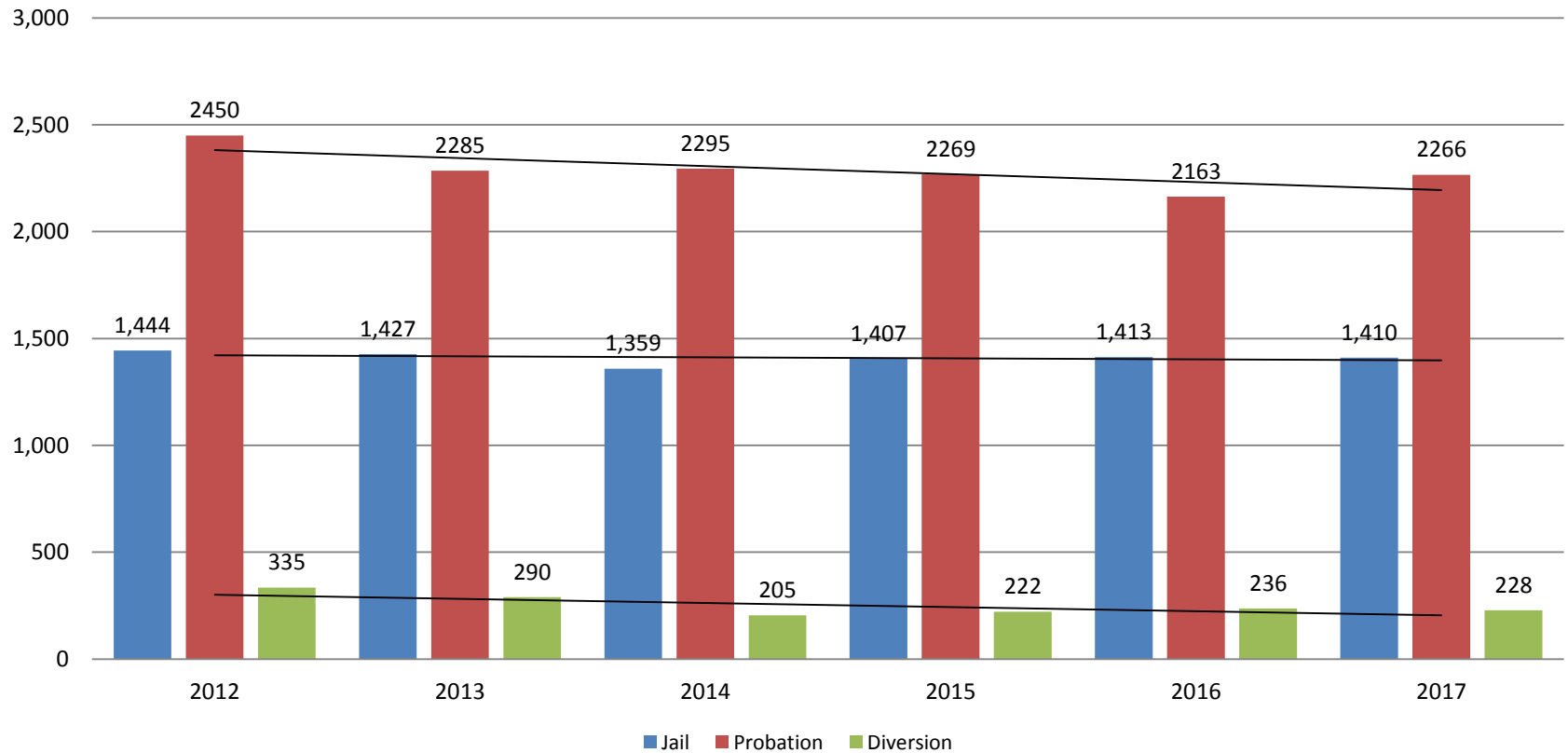
Jail includes individuals in booking, detention, work release and out-of county (combined)

(data obtained from detention facility, SG Dept. of Corrections, Pretrial Services, & CoW)



Correlation: Total & District Court Programs

Total Annual ADP: 2012 - Present

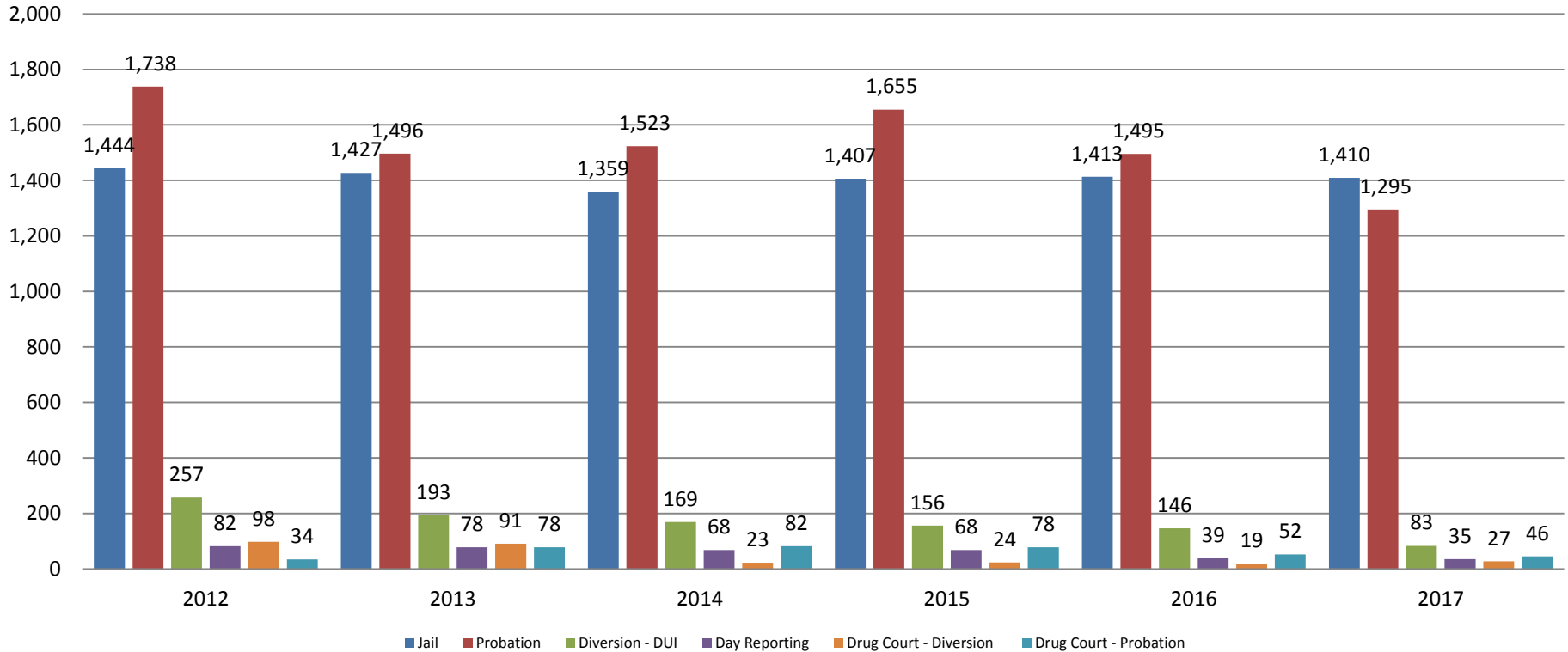


Jail includes individuals in booking, detention, work release and out-of county (combined)



Correlation: Total & City of Wichita / Municipal Court Programs

Total Annual ADP: 2012 - present

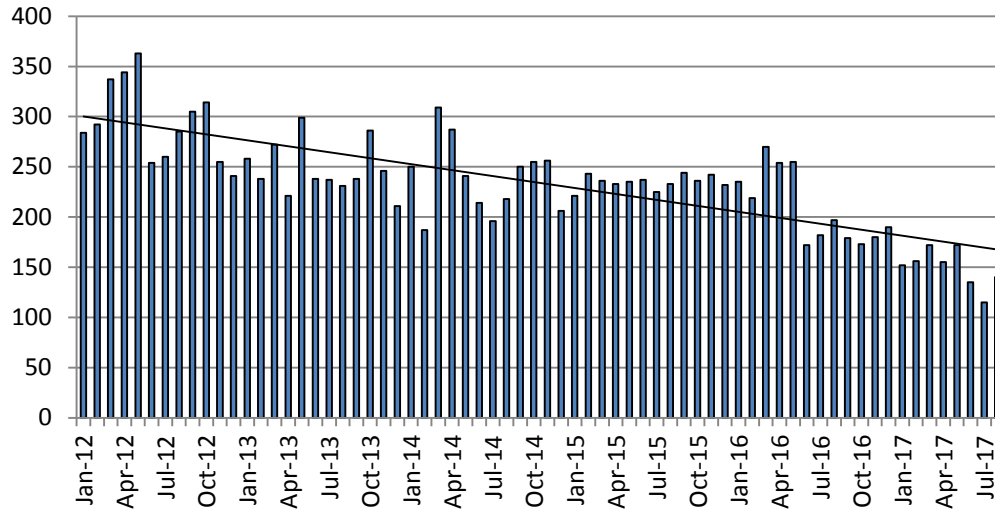


Jail includes individuals in booking, detention, work release and out-of county (combined)



Juvenile

JIAC Intakes: 2012 - present



August

2013 = 231
 2014 = 218
 2015 = 233
 2016 = 197
 2017 = 140

August YTD Average

2013 = 249
 2014 = 238
 2015 = 233
 2016 = 223
 2017 = 150

(data obtained from SG CO Dept. of Corrections)

August

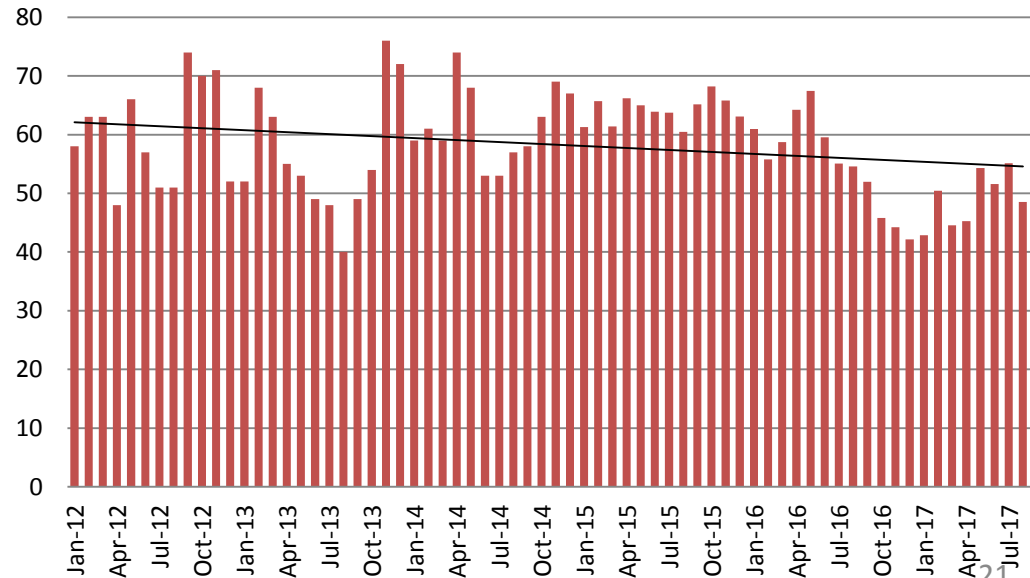
2013 = 40
 2014 = 57
 2015 = 60
 2016 = 55
 2017 = 49

August YTD Avg.

2013 = 54
 2014 = 61
 2015 = 63
 2016 = 60
 2017 = 49

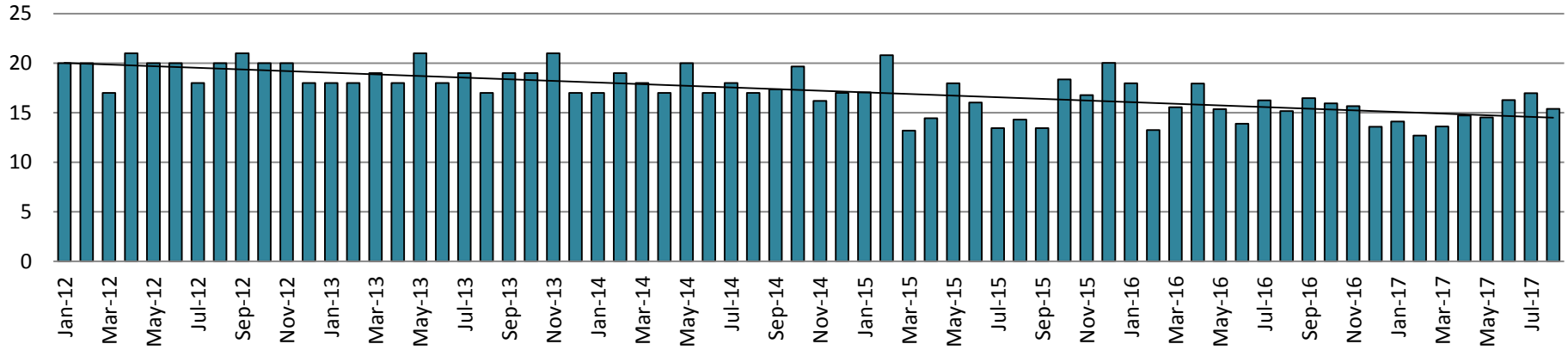
(data obtained from SG CO Dept. of Corrections)

JDF ADP: 2012 - present

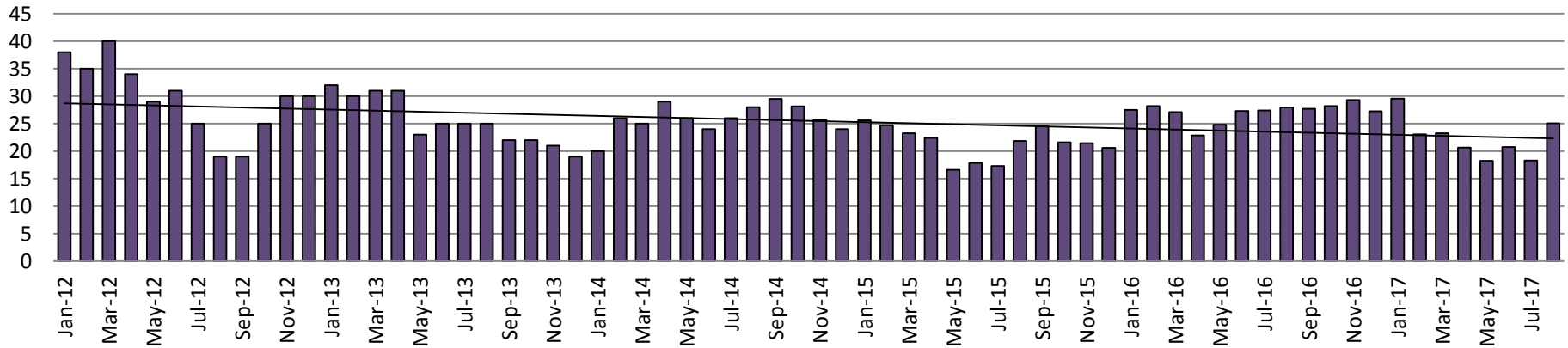


Juvenile Detention Alternatives

Juvenile Residential Facility (JRF) ADP: 2012 - present

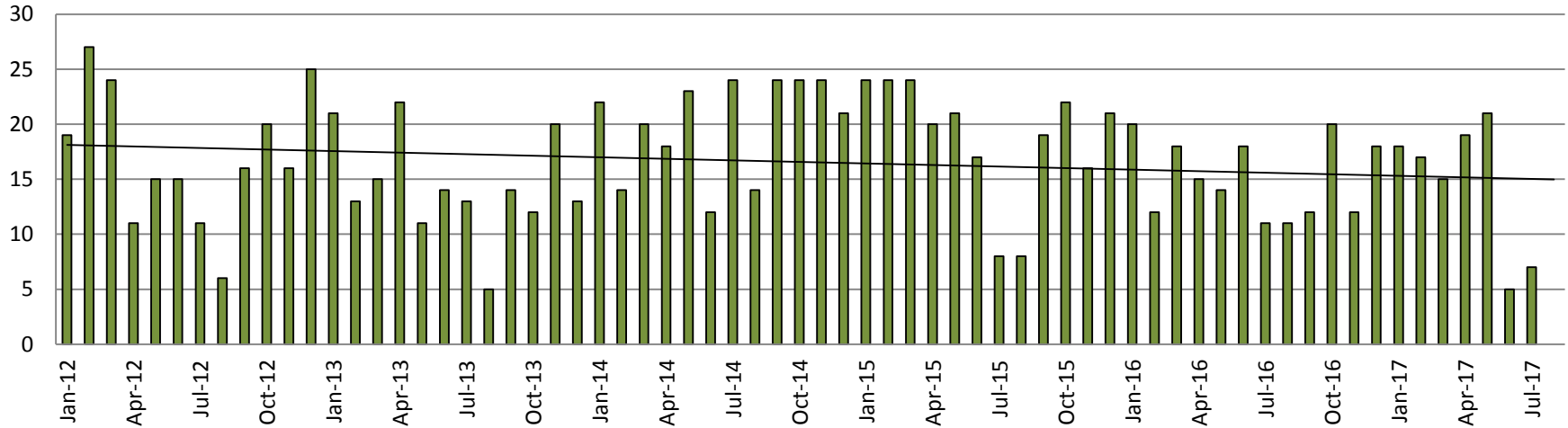


Home-Based Supervision ADP: 2012 - present

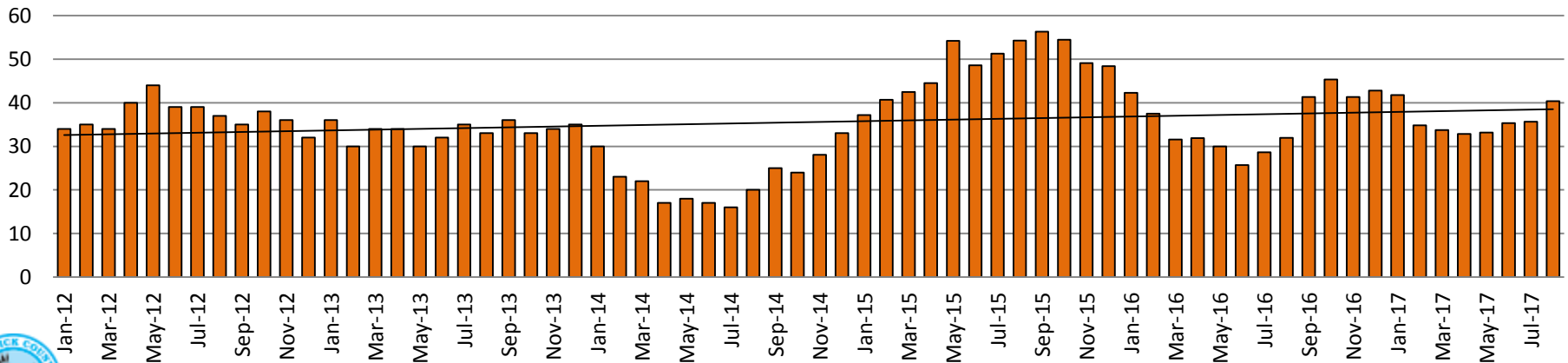


Juvenile Detention Alternatives

Weekend Alternative Detention Program 2012 - present



Detention Advocacy Case Management Services ADP: 2012 - present



Juvenile Detention Services

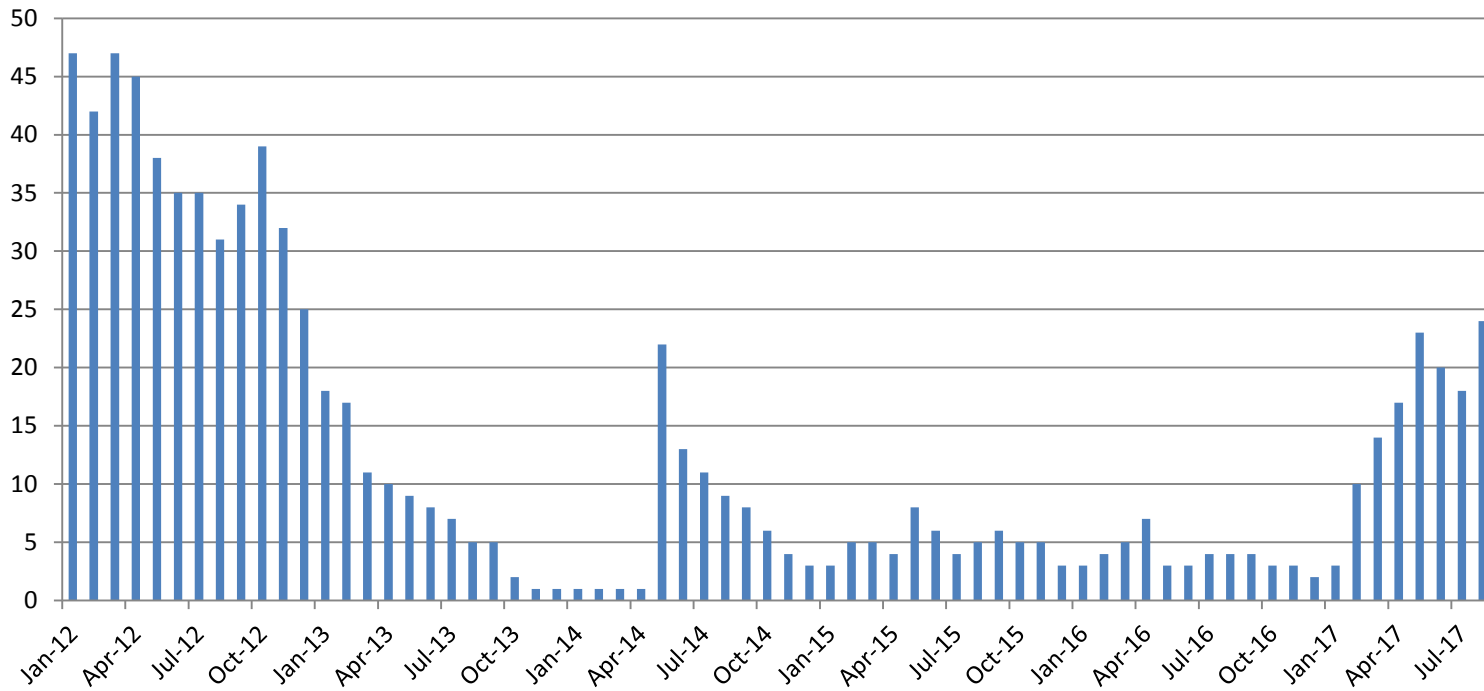
August ADP	2014	2015	2016	2017
Juvenile Detention Facility	57	60	55	49
Juvenile Residential Facility	17	14	15	15
Home Based Supervision	28	22	28	25
Detention Advocacy Case Management Services	20	54	32	40
Weekend Alternative Detention Program (total)	14	8	11	0

August YTD AVERAGE	2014	2015	2016	2017
Juvenile Detention Facility	61	63	60	49
Juvenile Residential Facility	18	16	16	15
Home Based Supervision	26	21	27	22
Detention Advocacy Case Management Services	20	47	32	36
Weekend Alternative Detention Program	18	18	15	13



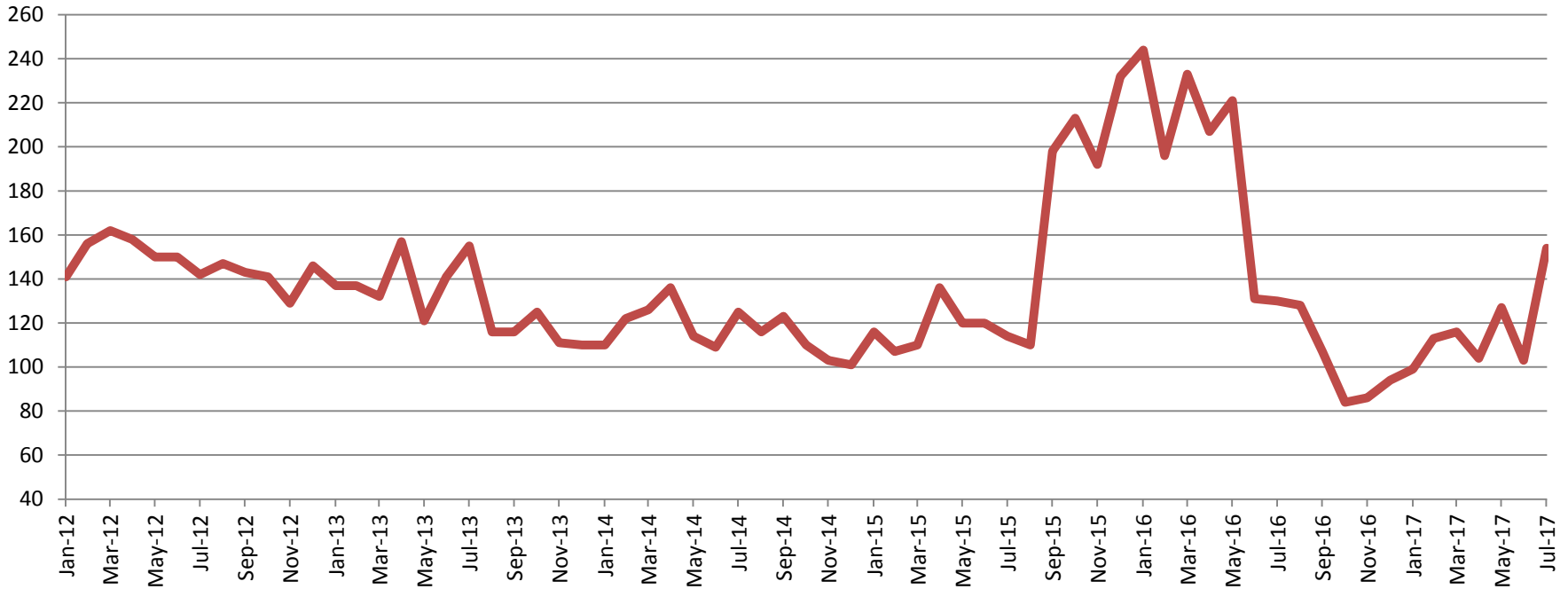
Monthly Jail Snapshot: July 31, 2017

BICE Holds 2012-Present



Monthly Jail Snapshot: July 31, 2017

Felony Commitments: February 2012 - present

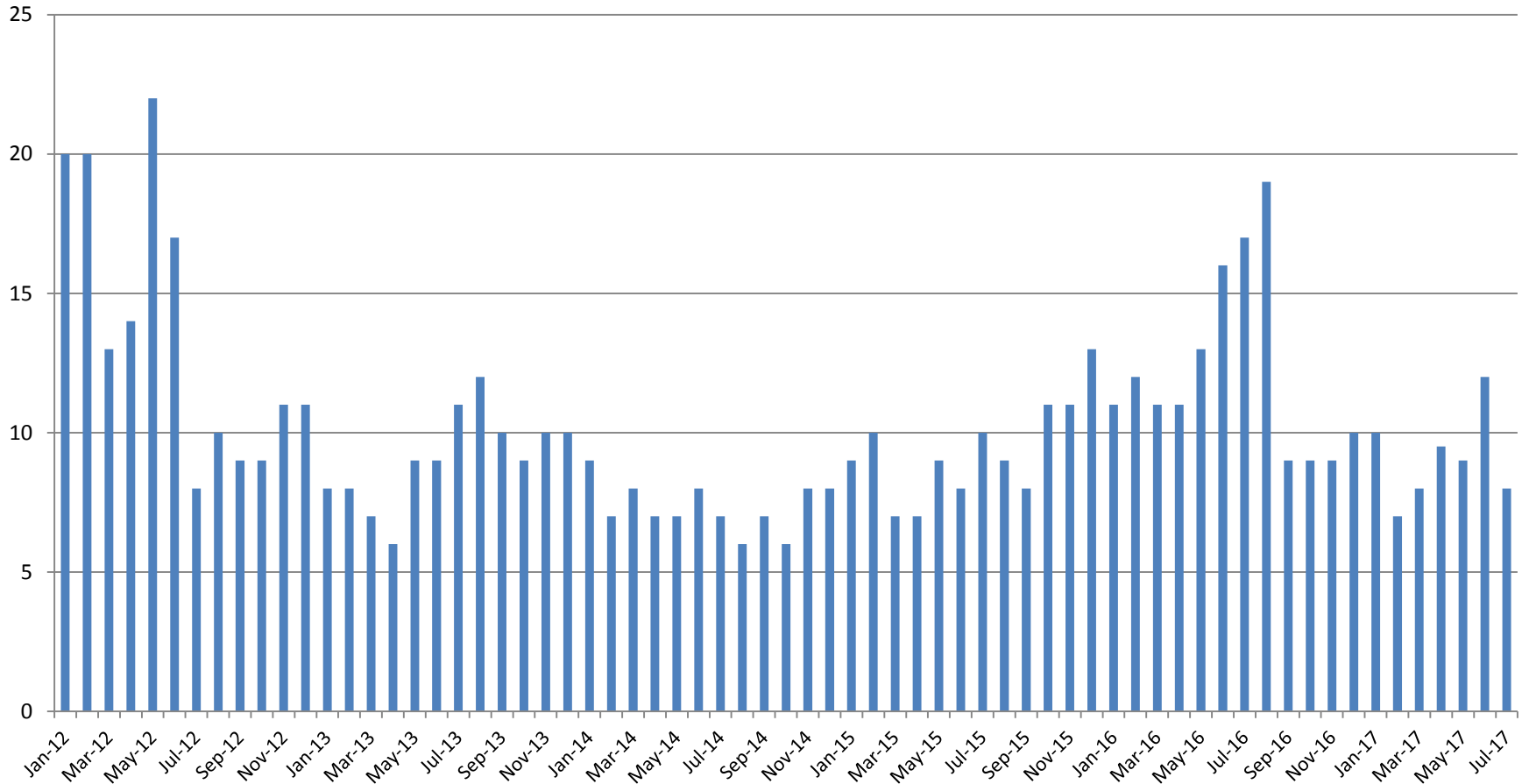


August:

2012 = 142	2015 = 114
2013 = 155	2016 = 130
2014 = 125	2017 = 154

(data obtained from SG CO DIO)

Journal Entry Completion (Average Days) January 2013-Present



This data is always reported a month behind

