

Criminal Justice Coordinating Council

Population Report & Program Trends

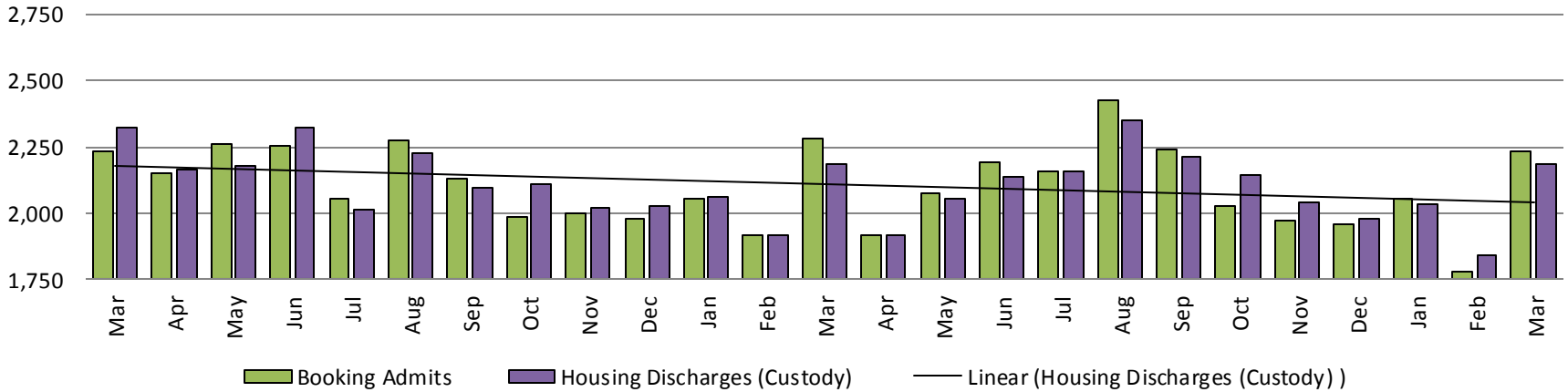
April 2018



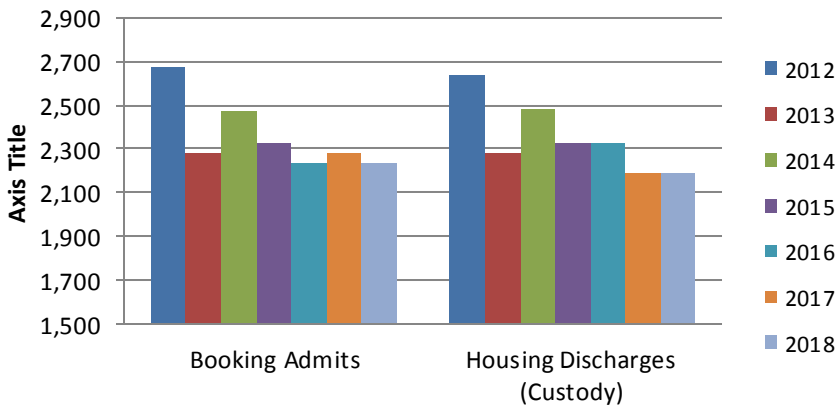
Sedgwick County...
working for you

Detention Facility

Booking Admits & Housing Discharges from Custody March 2016-Present



Bookings Year over Year: Month of March



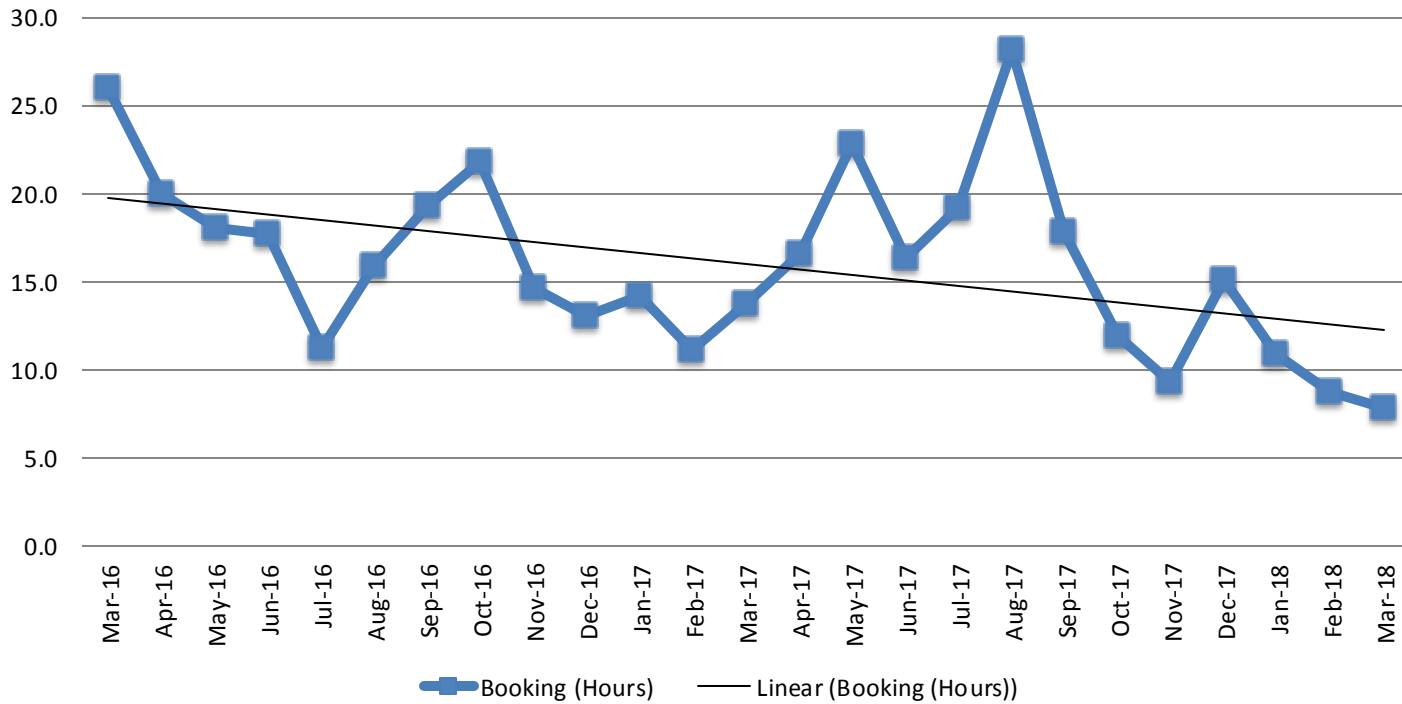
| Bookings March | Housing Discharges March |
|----------------|--------------------------|
| 2016: 2,236 | 2016: 2,324 |
| 2017: 2,282 | 2017: 2,189 |
| 2018: 2,236 | 2018: 2,187 |

(data obtained from detention facility)



Sedgwick County...
working for you

Average Length of Stay: Booking (Hours) March 2016 - Present

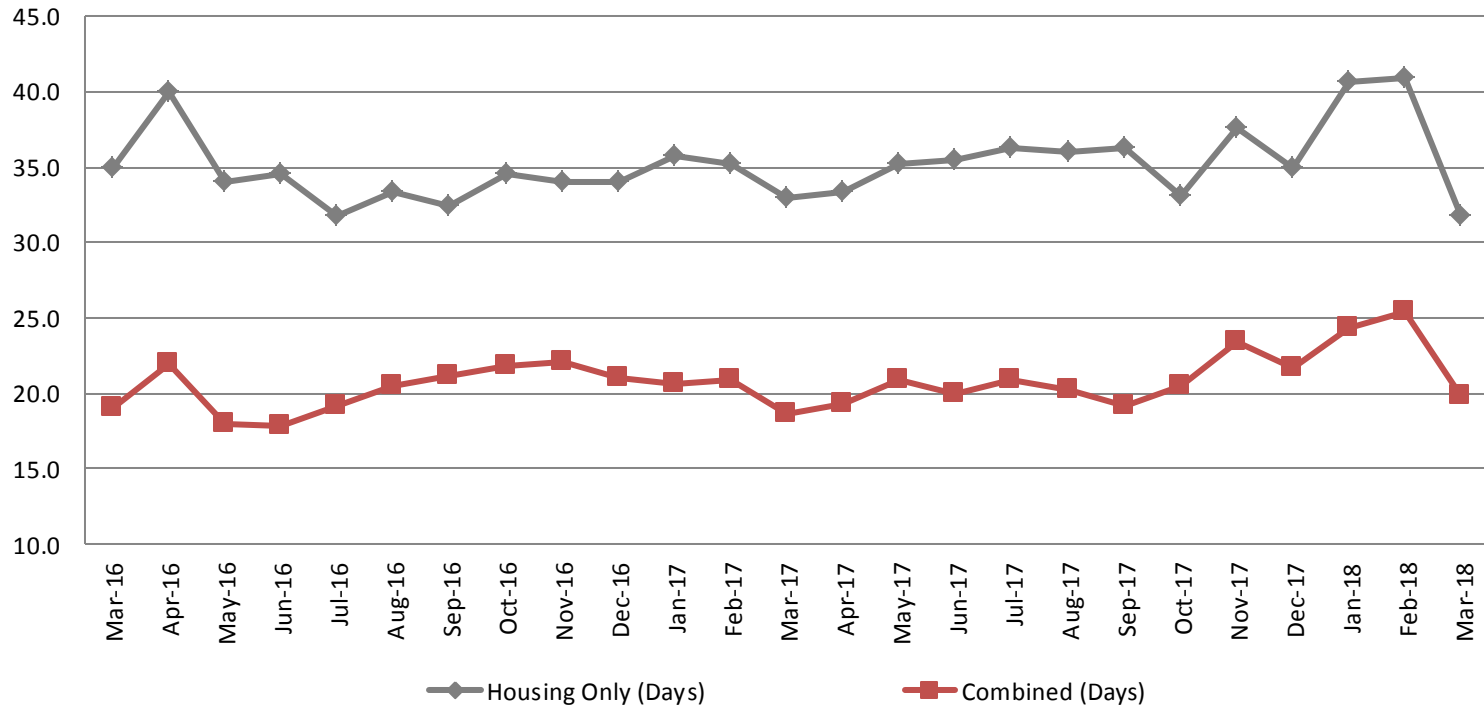


| March | March YTD Average |
|------------|-------------------|
| 2016: 26.0 | 2016: 22.3 |
| 2017: 13.7 | 2017: 13.0 |
| 2018: 7.8 | 2018: 9.2 |



Average Length of Stay: Housing & Combined (Days)

March 2016 - Present



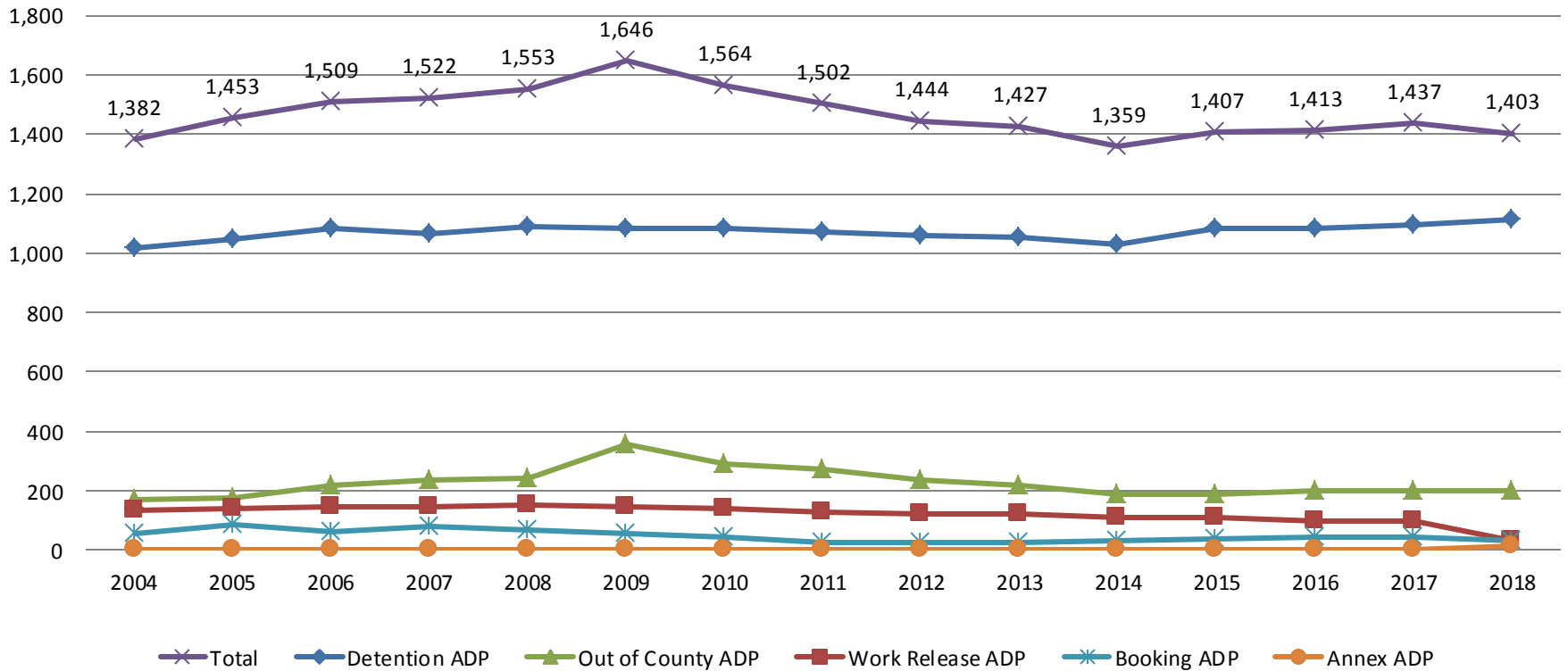
| Month, Year | Housing Only | Housing YTD AVG | Combined Days | Combined YTD AVG |
|-------------|--------------|-----------------|---------------|------------------|
| March 2016 | 35.0 | 36.3 | 19.0 | 18.7 |
| March 2017 | 32.9 | 34.6 | 18.6 | 20.0 |
| March 2018 | 31.8 | 37.8 | 19.8 | 23.2 |

(data obtained from detention facility)



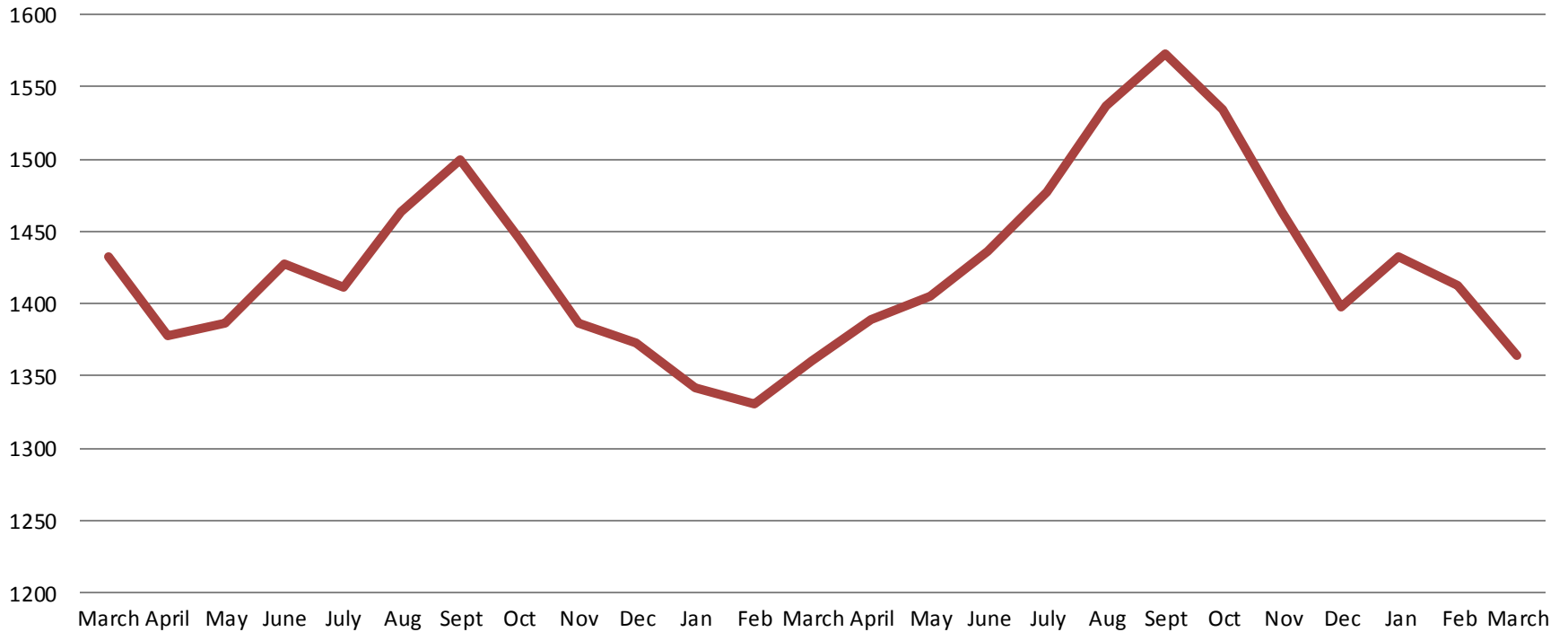
Jail: Annual Average Daily Population (ADP)

TRENDS: Booking, Detention, Work Release, & Out of County
Annual ADP: 2004 - present



*Beginning January 2018, Work Release program began transfer to Division of Corrections

TOTAL MONTHLY ADP: JAIL (Booking, Detention Facility, Work Release, & Out of County) March 2016 - present



| March 2016 | March 2017 | March 2018 |
|------------|------------|------------|
| 1,433 | 1,360 | 1,364 |

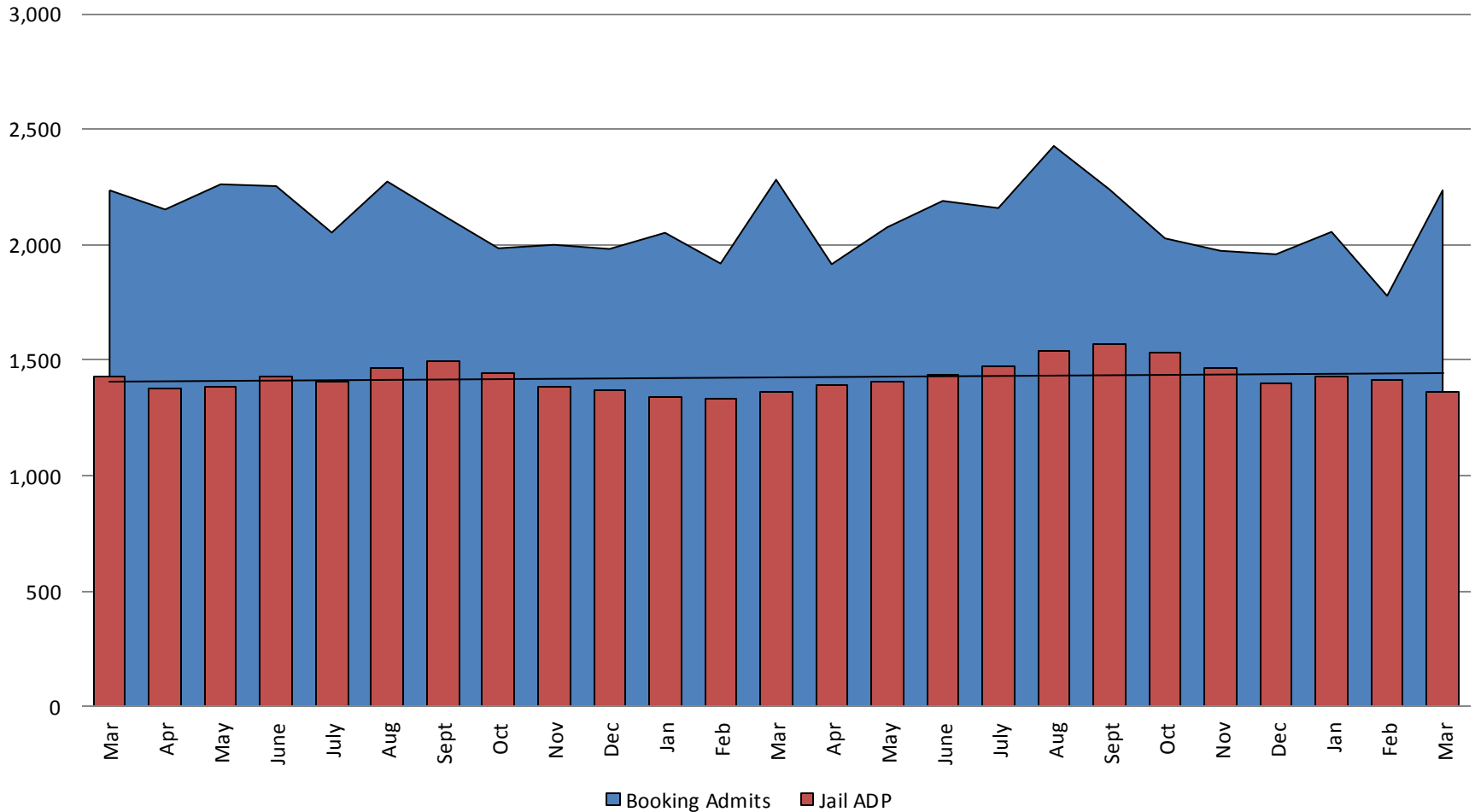
*Beginning January 2018, Work Release program began transfer to Division of Corrections

This slide shows total monthly ADP for individuals in booking, detention, work release, jail annex, and out-of county (combined)

(data obtained from detention facility)



Booking Admits & Total Monthly ADP (Jail): March 2016 - present



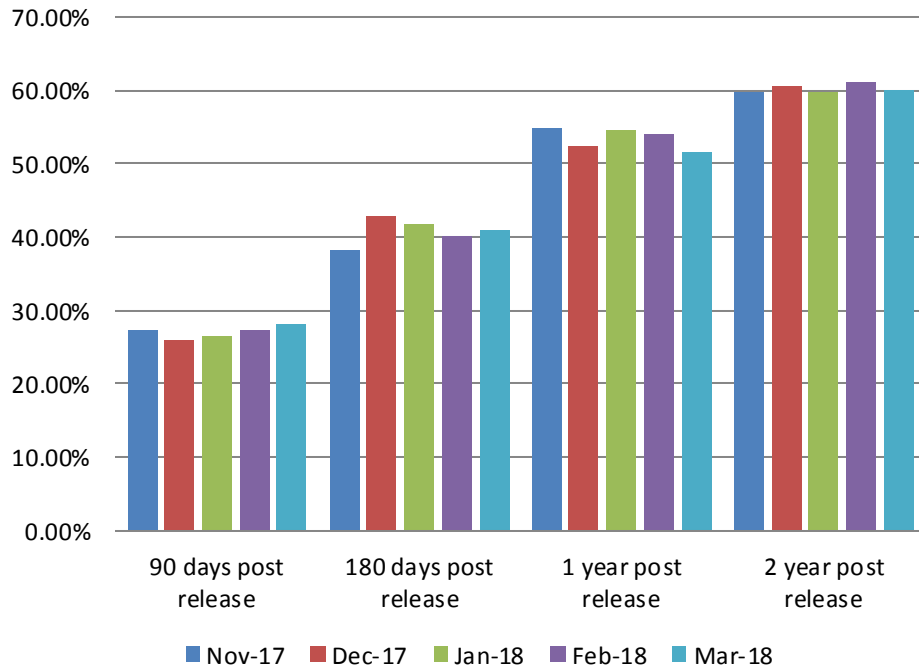
Jail includes individuals in booking, detention, work release and out-of county (combined)

(data obtained from detention facility)



Sedgwick County...
working for you

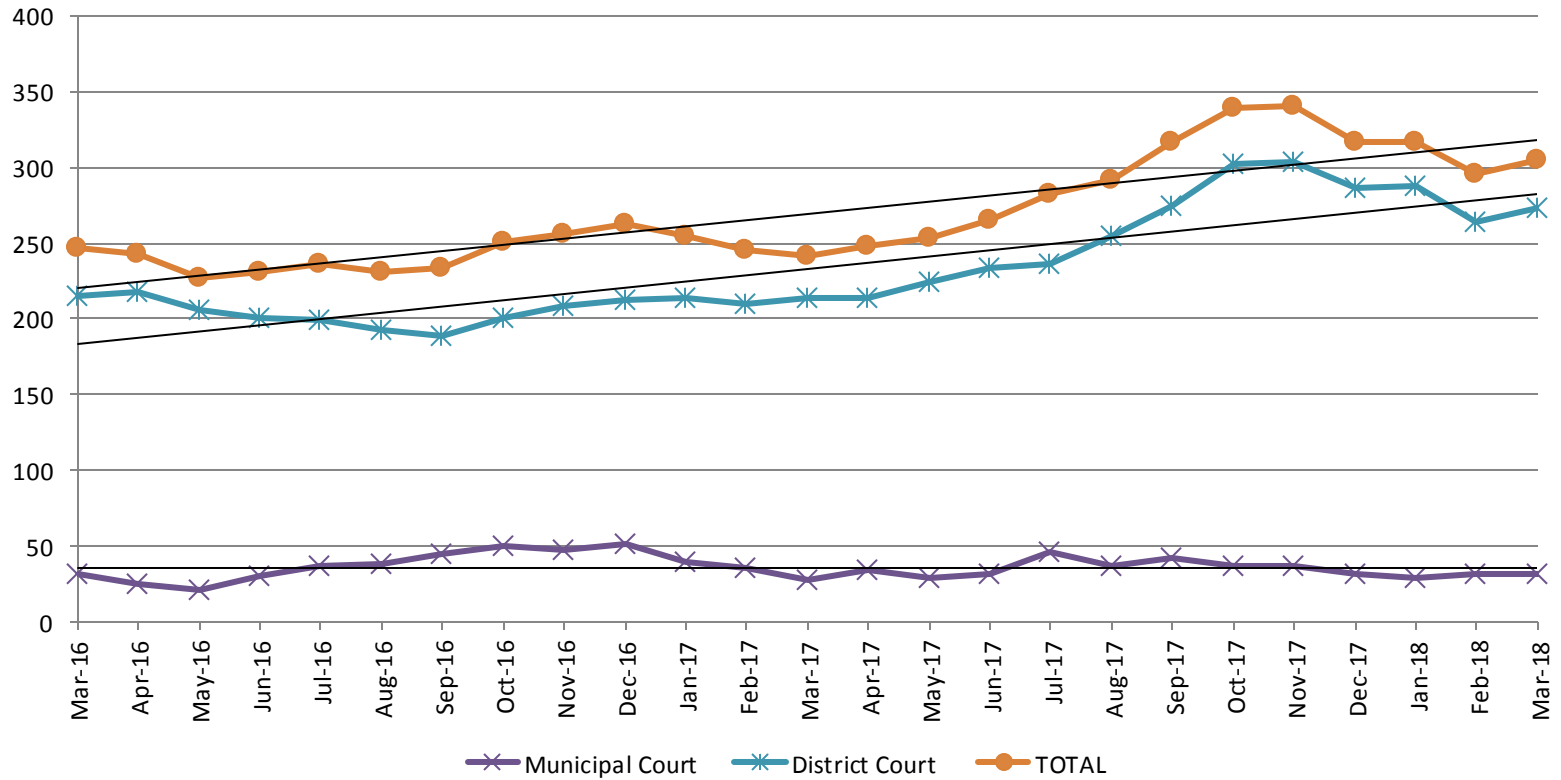
Percent of released inmates rearrested



| Month Year | 90 Days | 180 Days | 1 Year | 2 Years |
|------------|---------|----------|--------|---------|
| Nov 2017 | 27.25% | 38.27% | 54.81% | 59.64% |
| Dec 2017 | 25.85% | 42.72% | 52.28% | 60.64% |
| Jan 2018 | 26.55% | 41.67% | 54.57% | 59.84% |
| Feb 2018 | 27.39% | 40.22% | 54.02% | 61.03% |
| March 2018 | 28.00% | 41.08% | 51.69% | 60.03% |



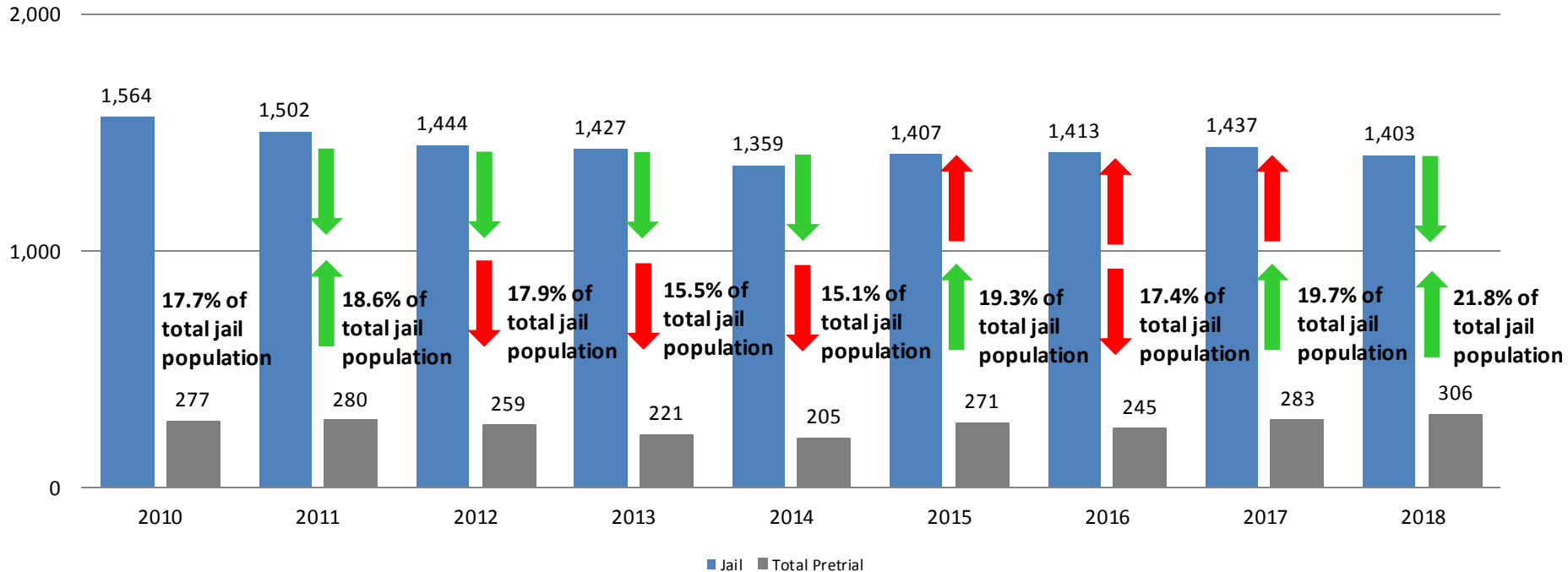
Pretrial Services Program (PSP) Monthly ADP: March 2016 - Present



| March | 2016 ADP | 2017 ADP | 2018 ADP | 2016 YTD Avg. | 2017 YTD Avg. | 2018 YTD Avg. |
|--------------|------------|------------|------------|---------------|---------------|---------------|
| Muni. Court | 32 | 28 | 32 | 35 | 35 | 31 |
| Dist. Court | 215 | 214 | 273 | 219 | 213 | 275 |
| Total | 247 | 254 | 305 | 257 | 254 | 306 |

Correlation: Total & PSP

Total Annual ADP: 2010 - Present



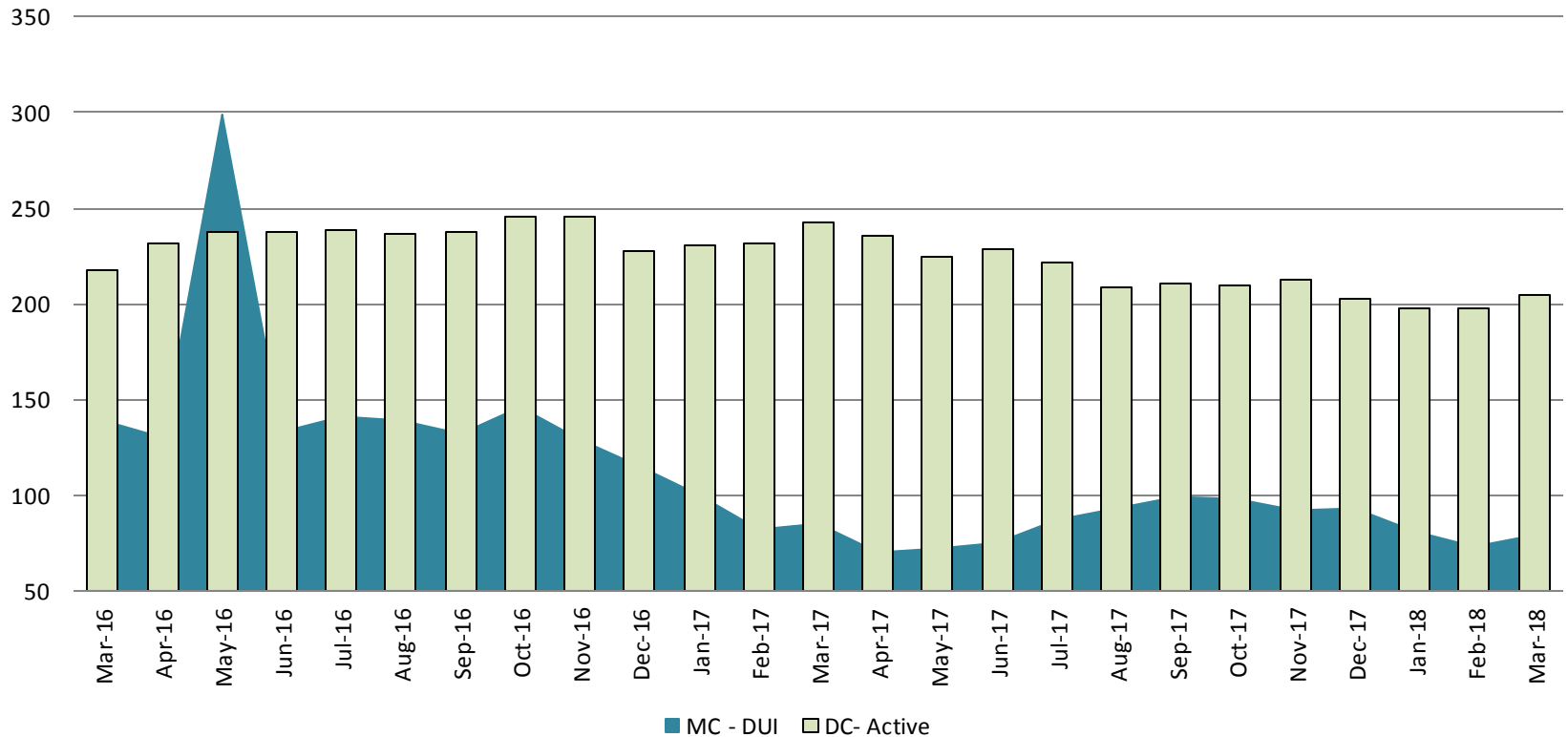
Arrows represent the overall increase/decrease of the population from year to year

Jail includes individuals in booking, detention, work release and out-of county (combined)



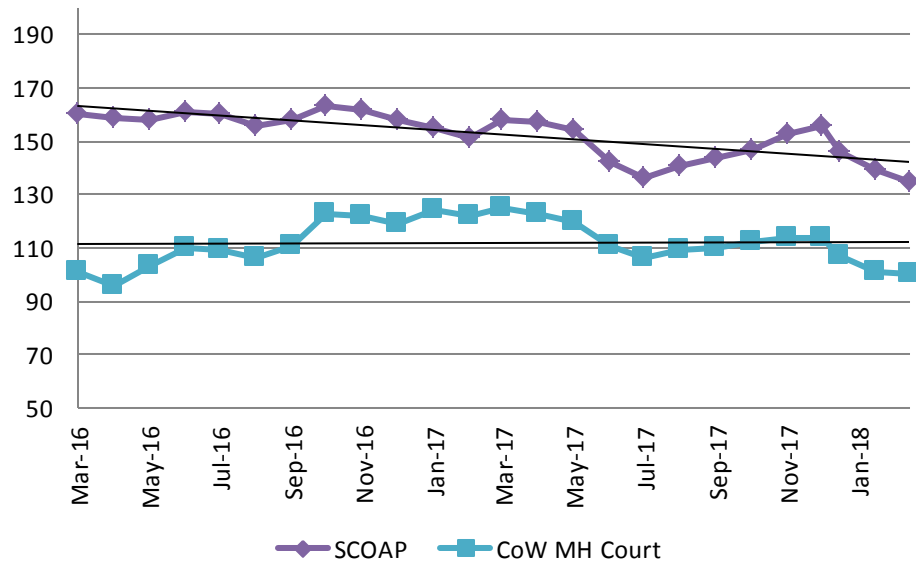
Diversion - Active Caseload

March 2016 - Present

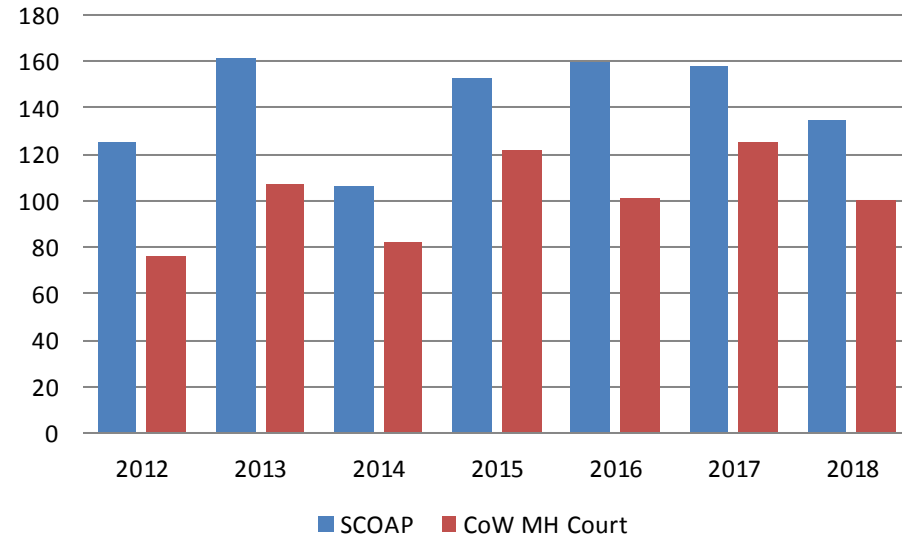


| March | 2016 | 2017 | 2018 | 2016 YTD Avg. | 2017 YTD Avg. | 2018 YTD Avg. |
|---------------------|------|------|------|---------------|---------------|---------------|
| Muni. Court- DUI | 139 | 85 | 79 | 131 | 91 | 78 |
| Dist. Court- Active | 218 | 243 | 205 | 231 | 235 | 200 |

Mental Health - ADP March 2016 - present

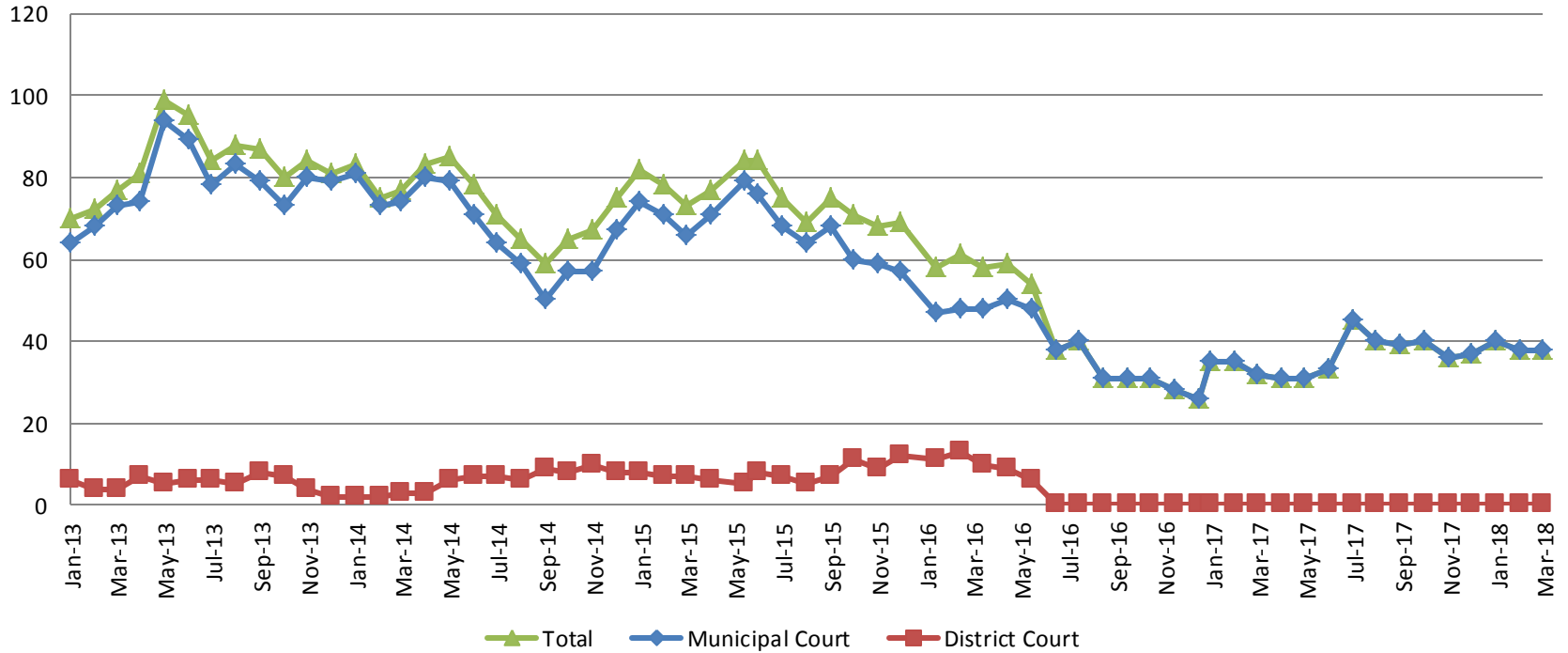


Mental Health ADP Year over Year- March



| March | 2016 ADP | 2017 ADP | 2018 ADP | 2016 YTD Avg. | 2017 YTD Avg. | 2018 YTD Avg. |
|----------|----------|----------|----------|---------------|---------------|---------------|
| SCOAP | 160 | 158 | 135 | 158 | 155 | 140 |
| MH Court | 101 | 125 | 100 | 99 | 124 | 103 |

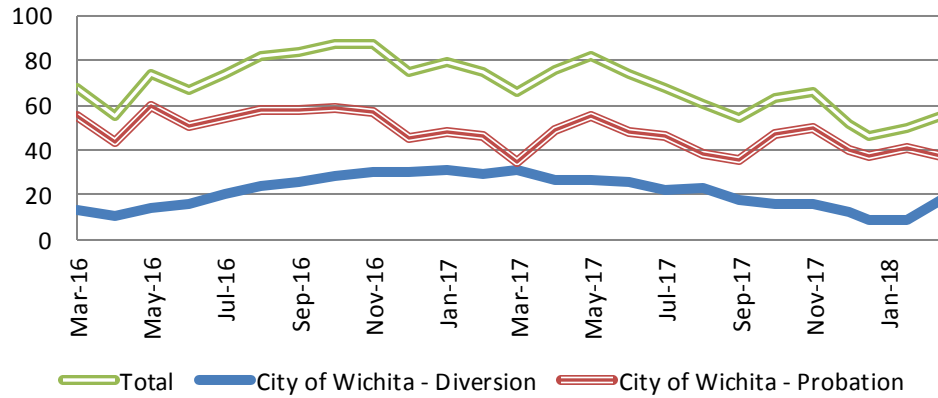
Day Reporting - Active Caseload 2013-present



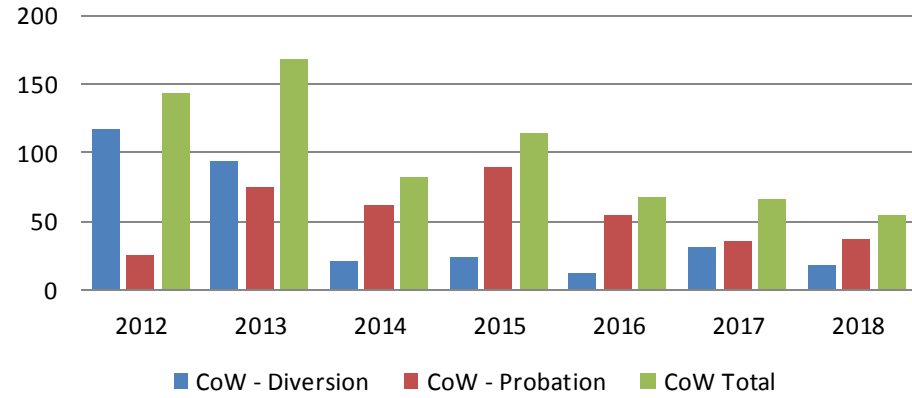
| | 2013 | 2014 | 2015 | 2016 | 2017 | 2018 |
|----------------------|------|------|------|------|------|------|
| Muni. Court | 73 | 74 | 66 | 48 | 32 | 38 |
| Muni. Court YTD Avg. | 68 | 76 | 70 | 48 | 34 | 39 |



Drug Court - City of Wichita ADP: March 2016- present



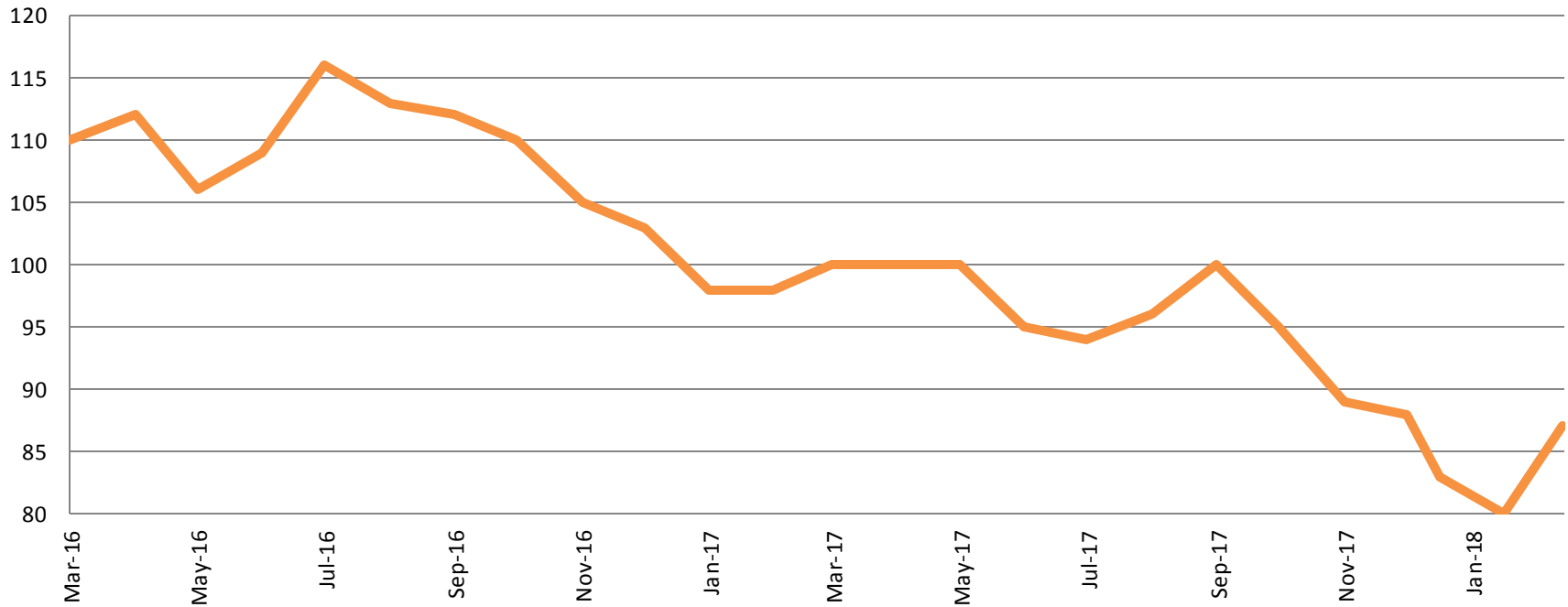
Drug Court- City of Wichita Year over Year- March



| March | 2016 | 2017 | 2018 |
|-----------|------|------|------|
| Diversion | 13 | 31 | 18 |
| Probation | 55 | 35 | 37 |
| Total | 68 | 66 | 55 |

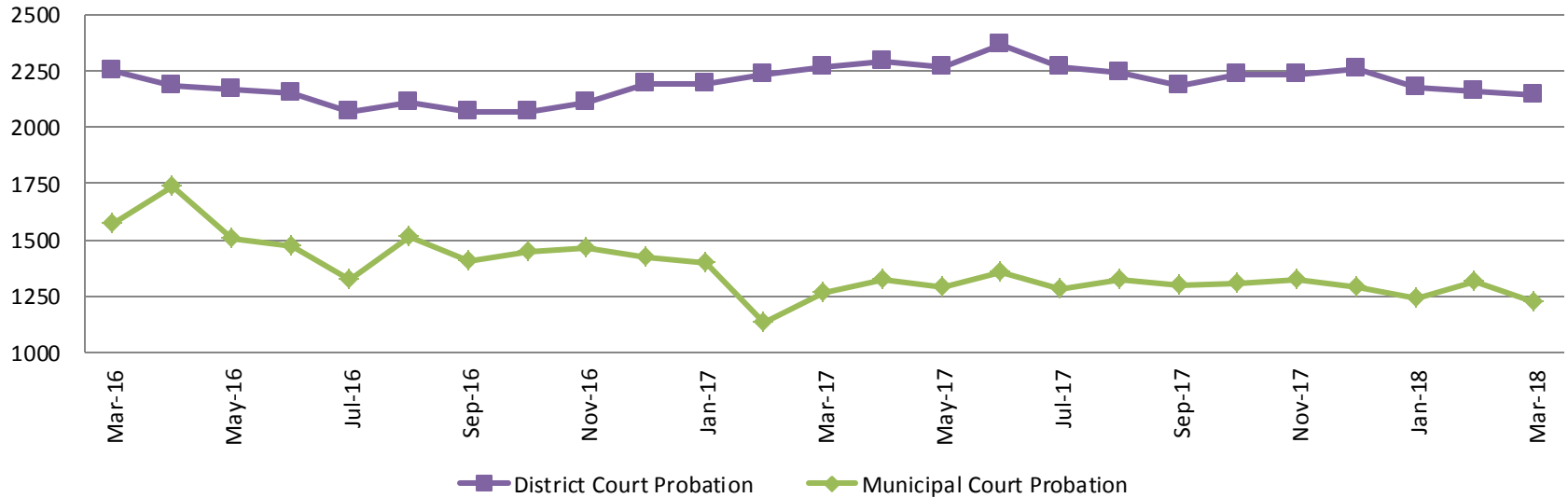


Drug Court - Sedgwick County ADP: March 2016 - present



| | March | 2016 | 2017 | 2018 |
|---------------|--------------|-------------|-------------|-------------|
| Sedg. Co. ADP | | 110 | 100 | 87 |
| YTD Avg. | | 108 | 99 | 83 |

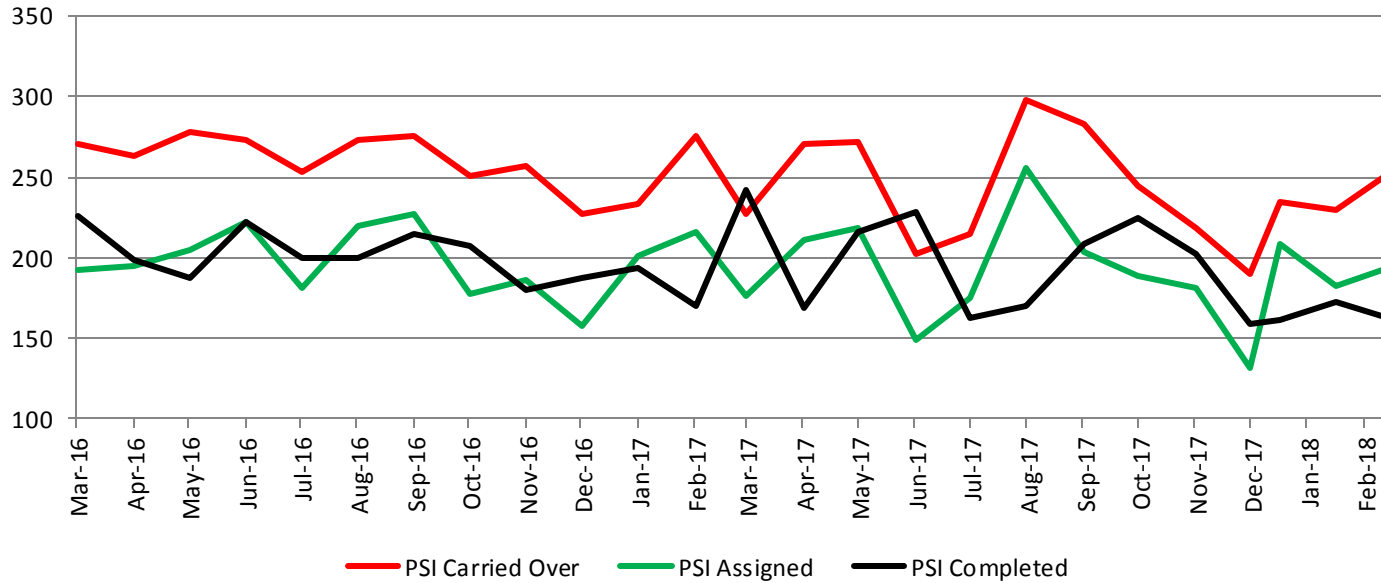
Probation - Active Caseloads March 2016 - present



| March | 2016 | 2017 | 2018 | 2016 YTD Avg. | 2017 YTD Avg. | 2018 YTD Avg. |
|-----------------------|------|------|------|---------------|---------------|---------------|
| Dist. Court Probation | 2251 | 2267 | 2142 | 2273 | 2231 | 2159 |
| Muni. Court Probation | 1572 | 1268 | 1266 | 1551 | 1226 | 1259 |



District Court Probation: Pre-Sentence Investigation March 2016 - present

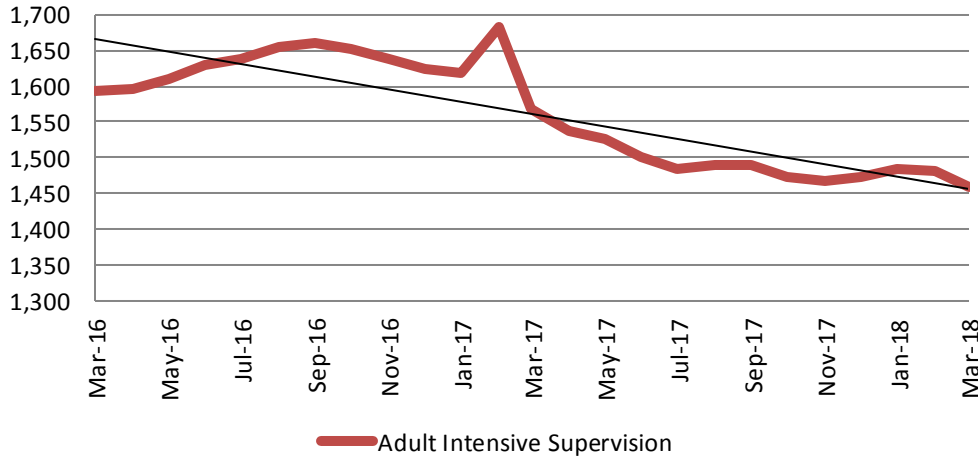


| March | 2016 | 2017 | 2018 |
|--------------|------|------|------|
| Carried Over | 271 | 227 | 252 |
| Assigned | 192 | 176 | 193 |
| Completed | 226 | 242 | 163 |



Community Corrections

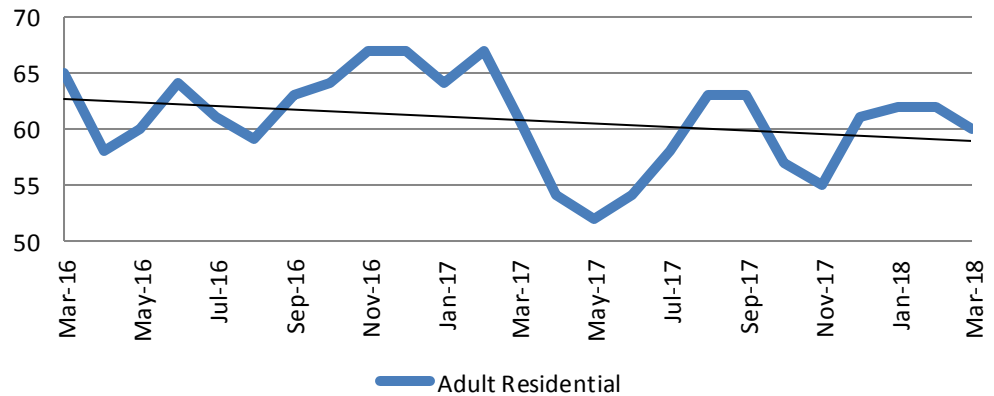
Adult Intensive Supervision Probation (AISP) ADP
March 2016- present



| Year | March | March YTD Avg. |
|------|-------|----------------|
| 2016 | 1,593 | 1,612 |
| 2017 | 1,567 | 1,623 |
| 2018 | 1,459 | 1,475 |

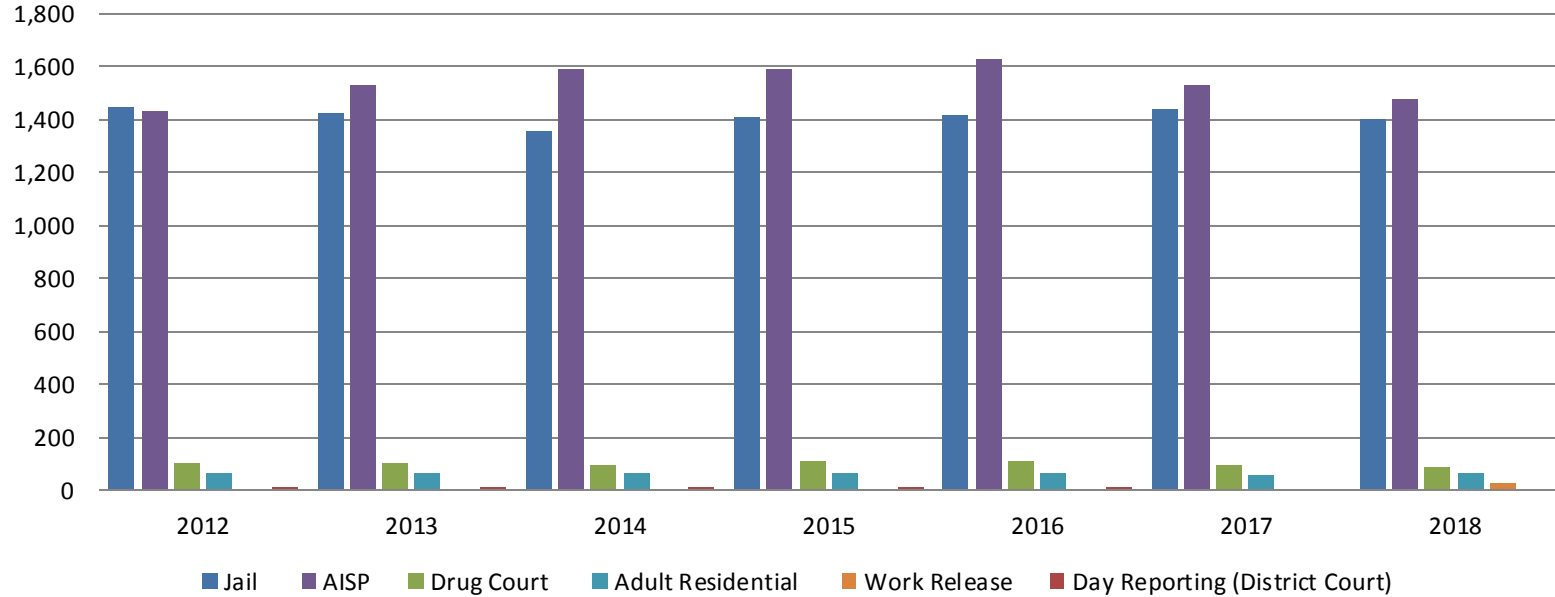
| Year | March | March YTD Avg. |
|------|-------|----------------|
| 2016 | 65 | 66 |
| 2017 | 61 | 64 |
| 2018 | 60 | 61 |

Adult Residential: ADP
March 2016- present



Correlation: Total & Sedgwick County Programs (Adult)

Total Annual ADP 2012-Present

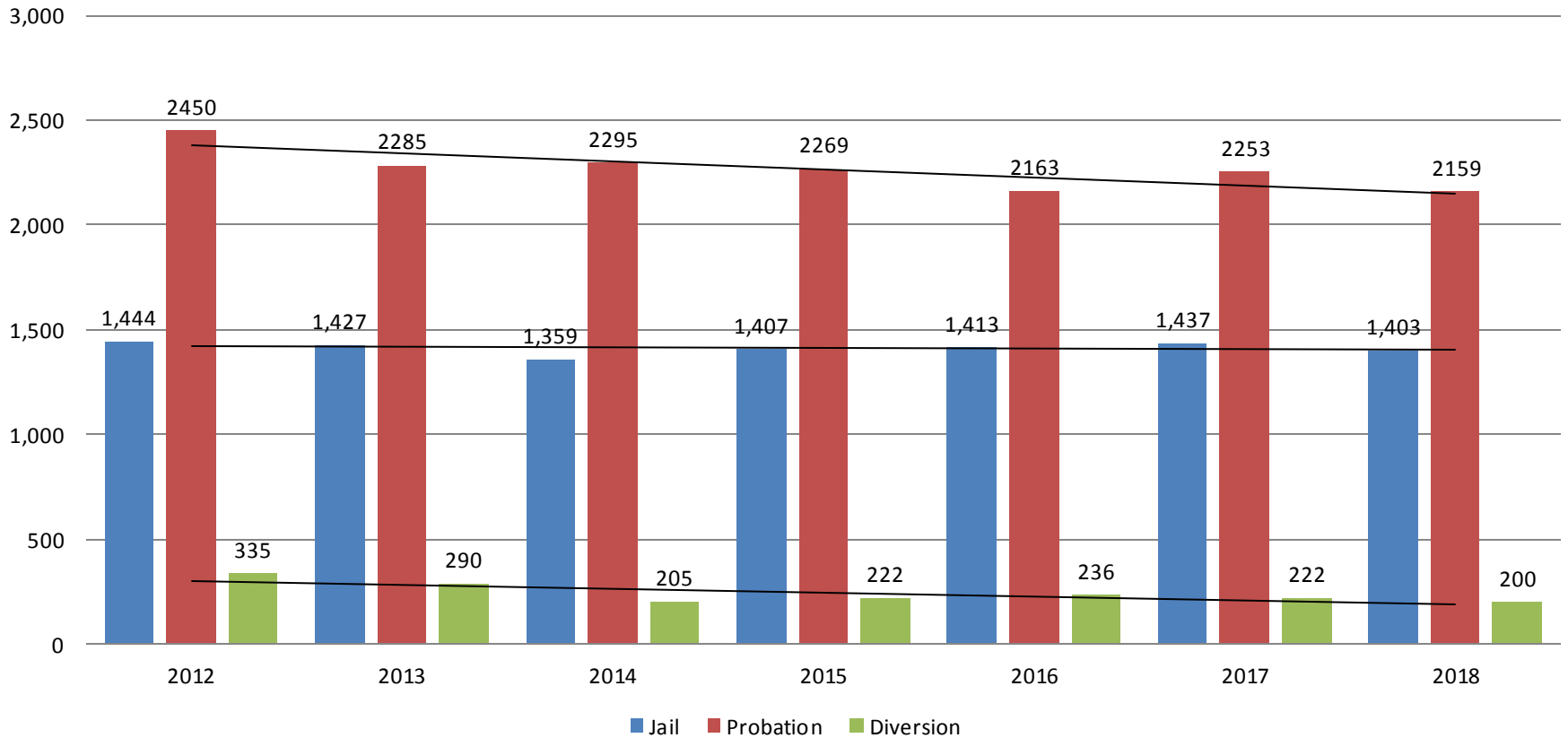


| | 2016 | 2017 | 2018 |
|--------------------|-------|-------|-------|
| Jail | 1,413 | 1,437 | 1,403 |
| AISP | 1,629 | 1,526 | 1,475 |
| Drug Court | 109 | 96 | 83 |
| Adult Residential | 63 | 59 | 61 |
| Work Release | 0 | 0 | 30 |
| Day Reporting (DC) | 4 | 0 | 0 |

Jail includes individuals in booking, detention, work release and out-of county (combined)
 Sedgwick County... working for you (data obtained from detention facility, SG Dept. of Corrections, Pretrial Services, & CoW)

Correlation: Total & District Court Programs

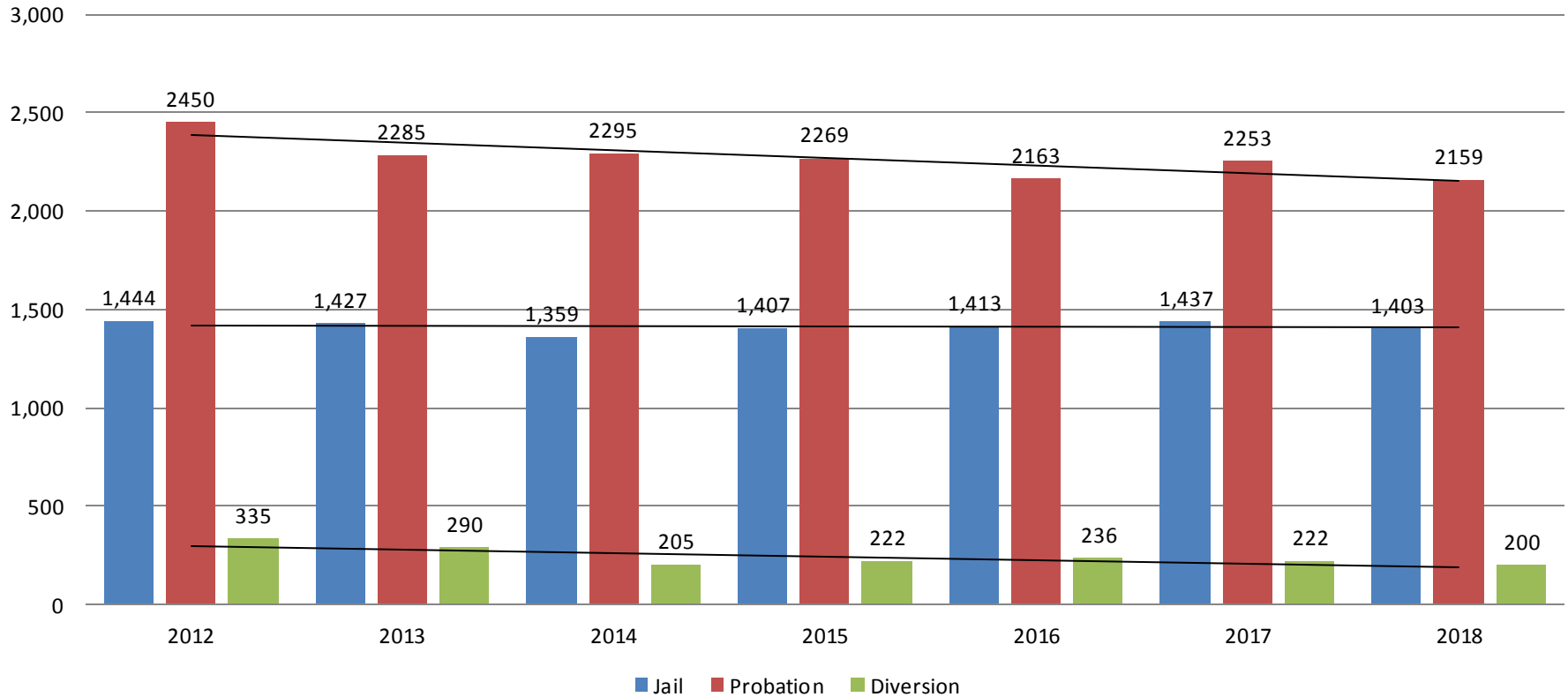
Total Annual ADP: 2012 - Present



Jail includes individuals in booking, detention, work release and out-of county (combined)

Correlation: Total & City of Wichita / Municipal Court Programs

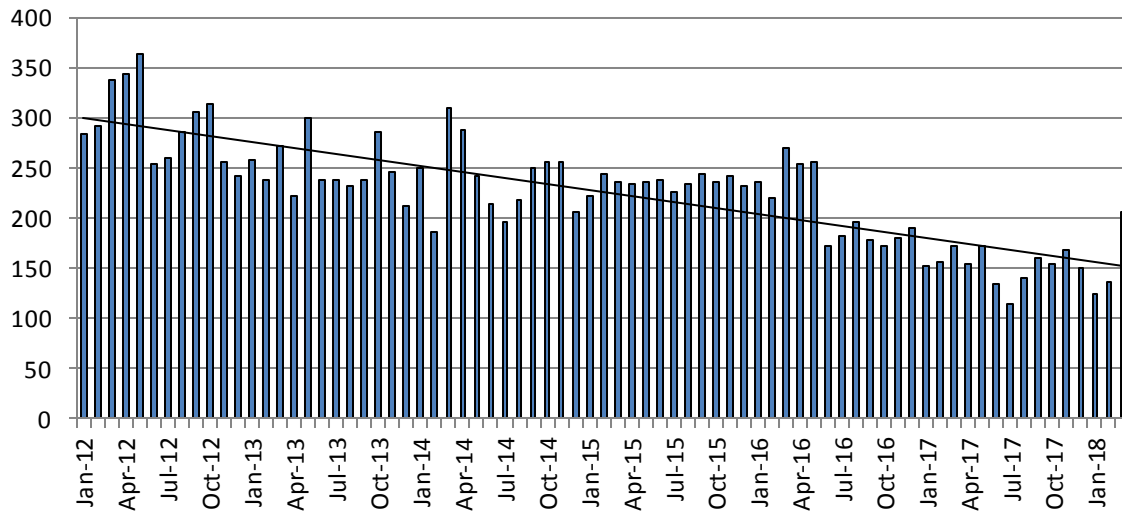
Total Annual ADP: 2012 - Present



Jail includes individuals in booking, detention, work release and out-of county (combined)

Juvenile

JIAC Intakes: 2012 - present

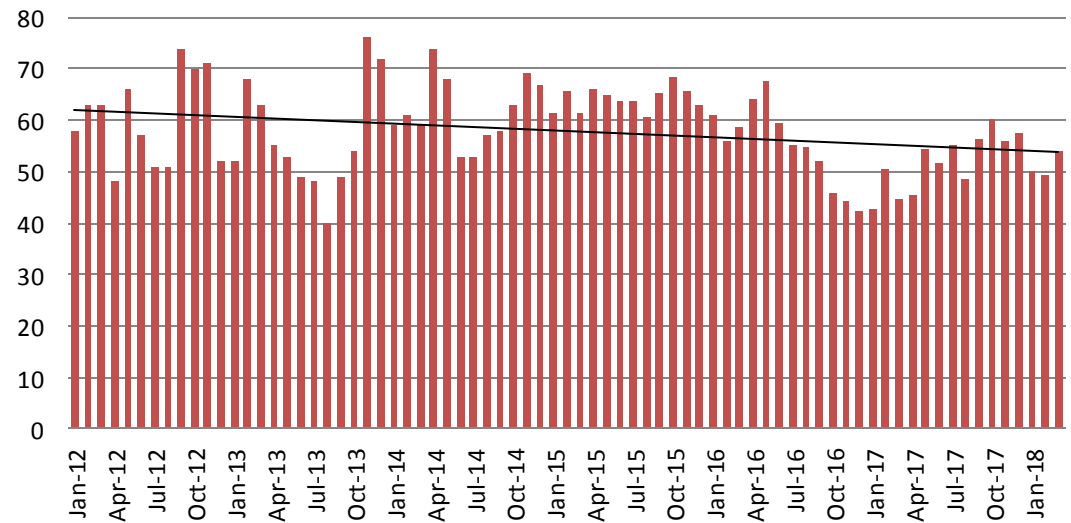


| Year | March | March YTD Avg. |
|------|-------|----------------|
| 2013 | 272 | 256 |
| 2014 | 309 | 249 |
| 2015 | 236 | 233 |
| 2016 | 270 | 241 |
| 2017 | 172 | 160 |
| 2018 | 206 | 155 |

| Year | March | March YTD Avg. |
|------|-------|----------------|
|------|-------|----------------|

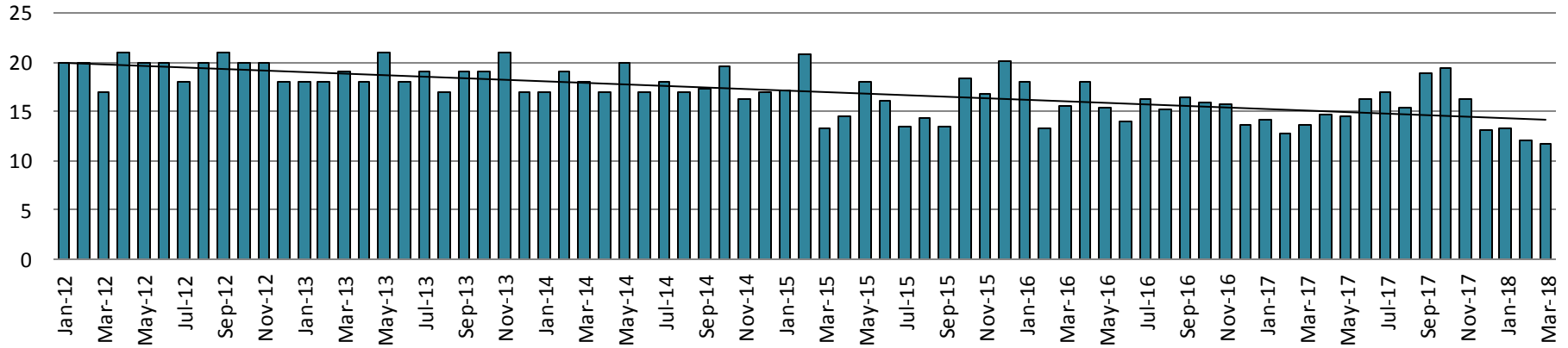
| | | |
|------|----|----|
| 2013 | 63 | 61 |
| 2014 | 59 | 60 |
| 2015 | 61 | 63 |
| 2016 | 59 | 58 |
| 2017 | 45 | 46 |
| 2018 | 54 | 51 |

JDF ADP: 2012 - present

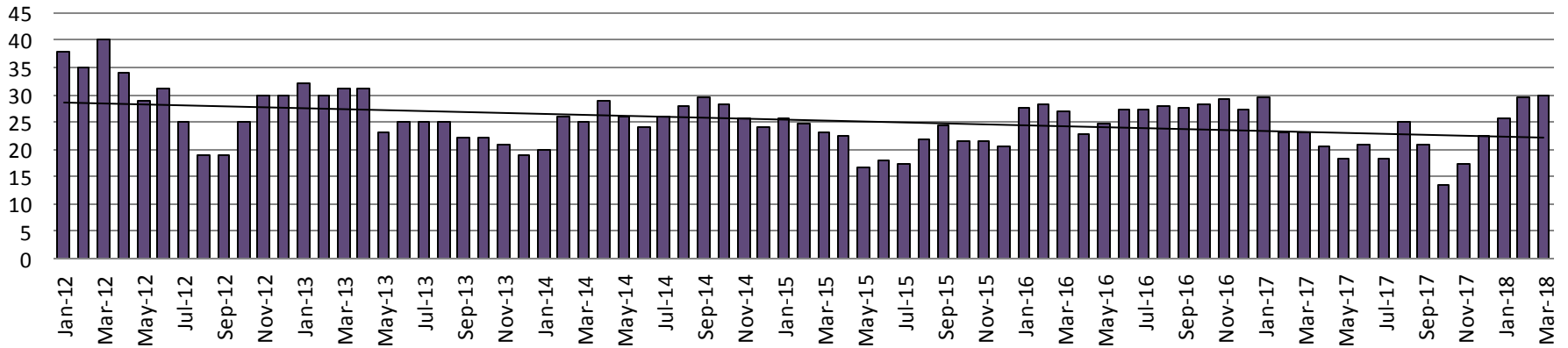


Juvenile Detention Alternatives

Juvenile Residential Facility (JRF) ADP: 2012 - present

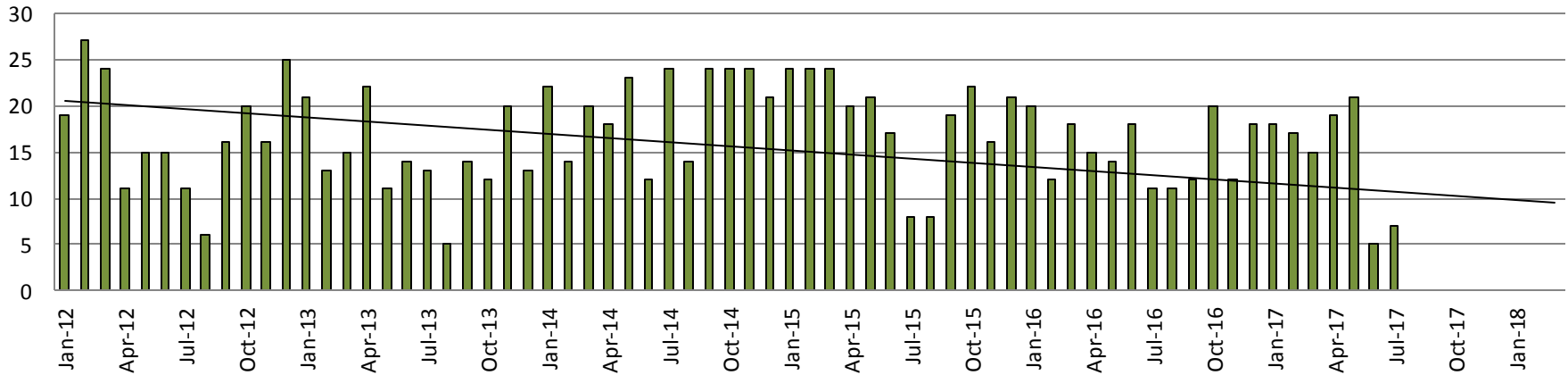


Home-Based Supervision ADP: 2012 - present

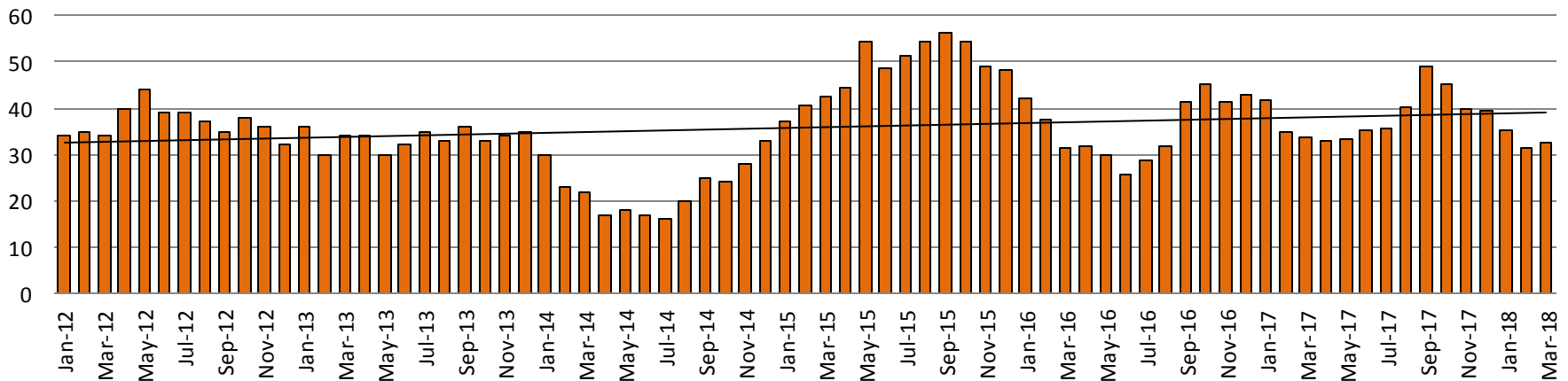


Juvenile Detention Alternatives

Weekend Alternative Detention Program 2012 - present



Detention Advocacy Case Management Services ADP: 2012 - present



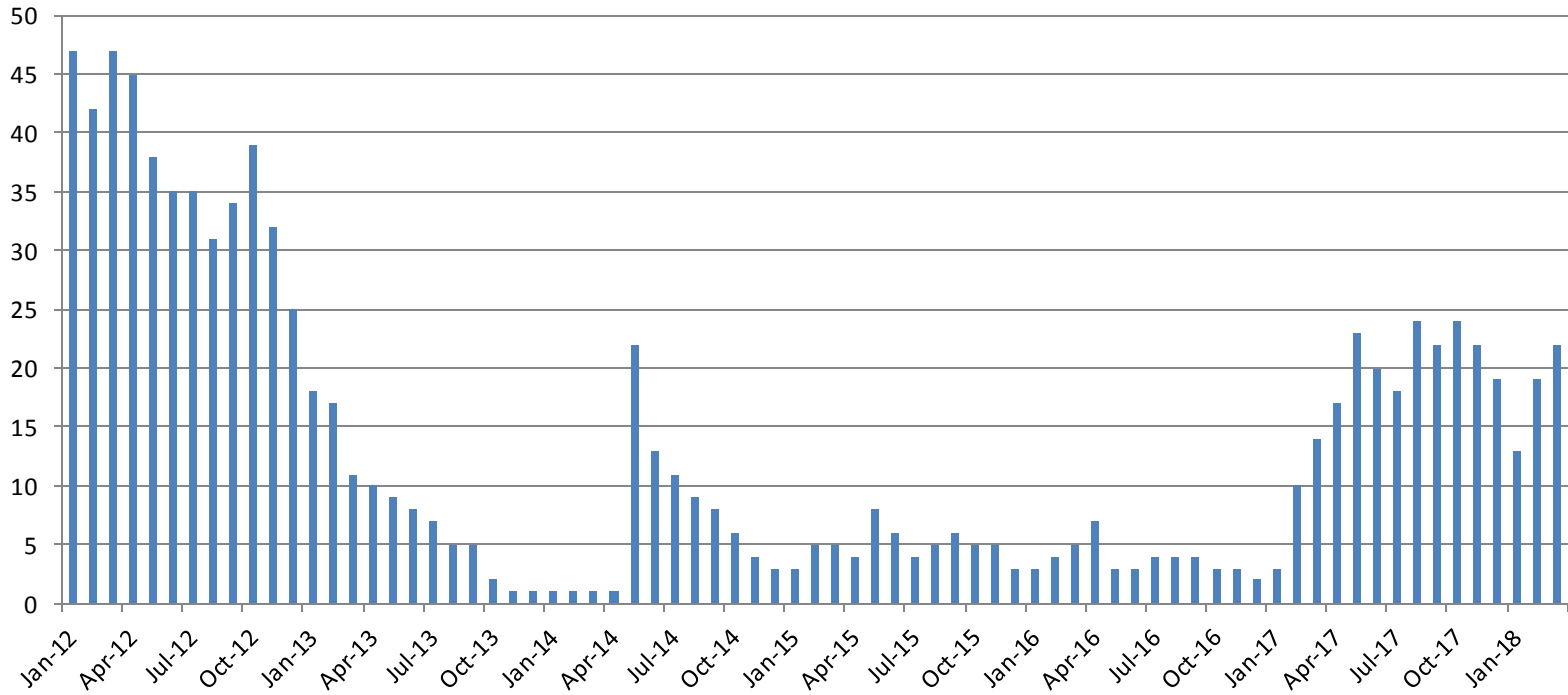
Juvenile Detention Services

| March ADP | 2015 | 2016 | 2017 | 2018 |
|---|-------------|-------------|-------------|-------------|
| Juvenile Detention Facility | 61 | 59 | 45 | 54 |
| Juvenile Residential Facility | 13 | 16 | 14 | 12 |
| Home Based Supervision | 23 | 27 | 23 | 30 |
| Detention Advocacy Case Management Services | 42 | 32 | 34 | 33 |
| Weekend Alternative Detention Program (total) | 24 | 18 | 15 | 0 |

| March YTD AVERAGE | 2015 | 2016 | 2017 | 2018 |
|---|-------------|-------------|-------------|-------------|
| Juvenile Detention Facility | 63 | 58 | 46 | 51 |
| Juvenile Residential Facility | 17 | 16 | 13 | 12 |
| Home Based Supervision | 25 | 28 | 25 | 28 |
| Detention Advocacy Case Management Services | 40 | 37 | 37 | 33 |
| Weekend Alternative Detention Program | 24 | 17 | 17 | 0 |

Monthly Jail Snapshot: March 31, 2018

BICE Holds 2012-Present

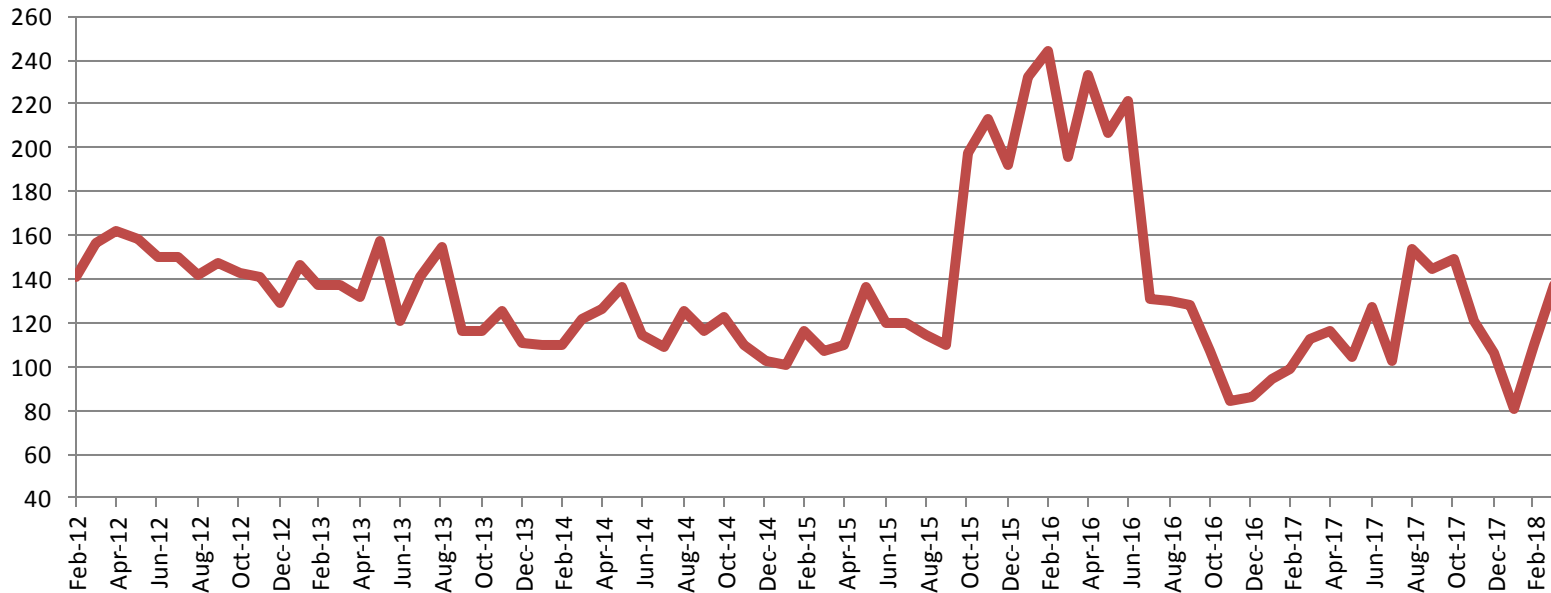


| 2013 | 2014 | 2015 | 2016 | 2017 | 2018 |
|------|------|------|------|------|------|
| 11 | 1 | 5 | 5 | 14 | 22 |



Monthly Jail Snapshot: March 31, 2018

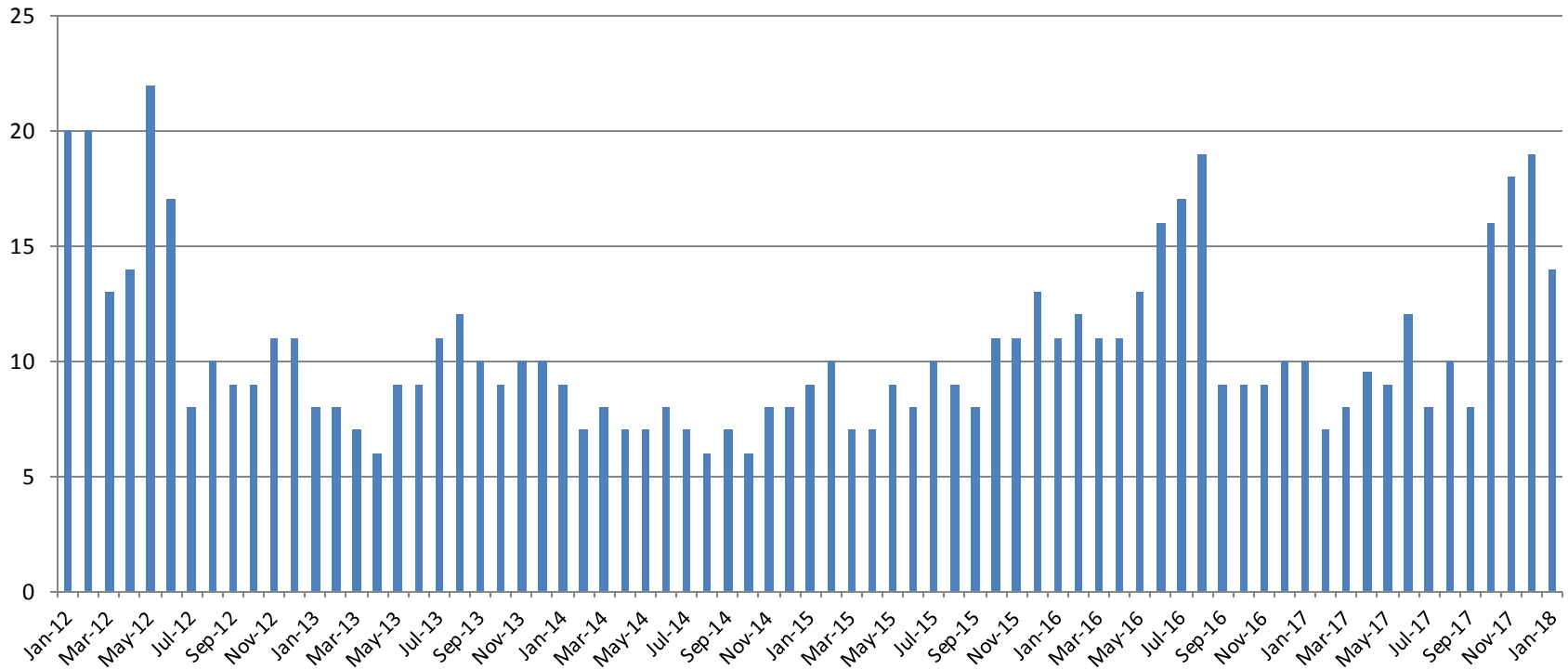
Felony Commitments: February 2012 - present



| 2013 | 2014 | 2015 | 2016 | 2017 | 2018 |
|------|------|------|------|------|------|
| 137 | 122 | 107 | 196 | 113 | 137 |



Journal Entry Completion (Average Days) January 2012-Present



| Jan. | 2013 | 2014 | 2015 | 2016 | 2017 | 2018 |
|-----------|------|------|------|------|------|------|
| Avg. Days | 8 | 9 | 9 | 11 | 10 | 14 |
| YTD Avg. | 8 | 9 | 9 | 11 | 10 | 14 |

