

Criminal Justice Coordinating Council

Population Report & Program Trends

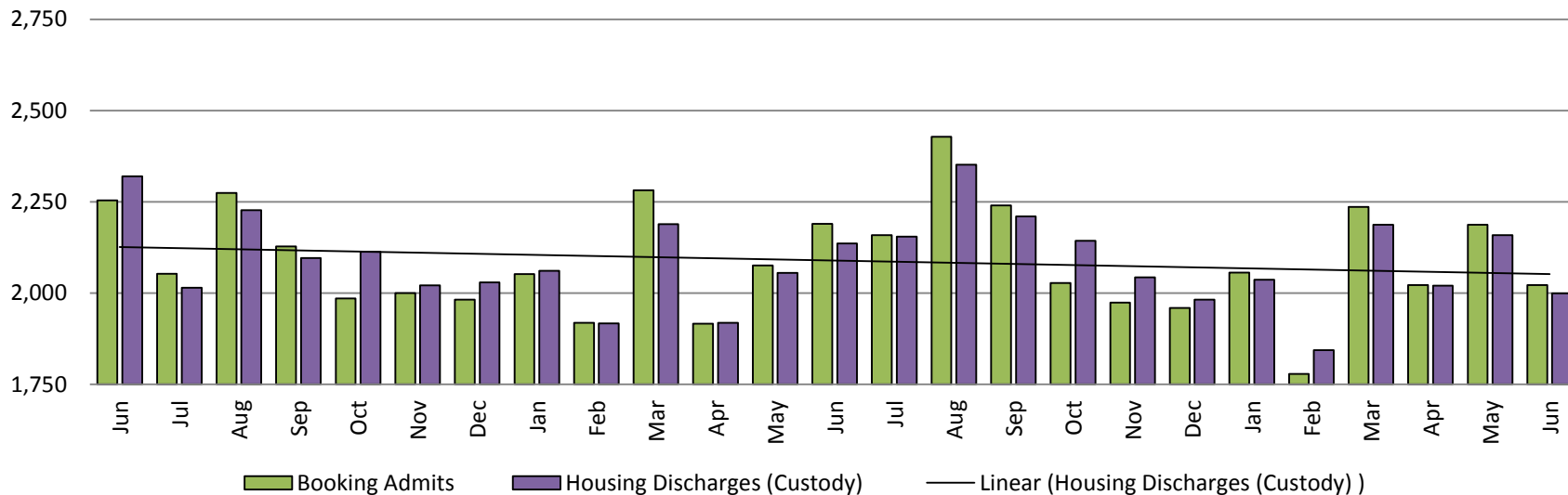
July 2018



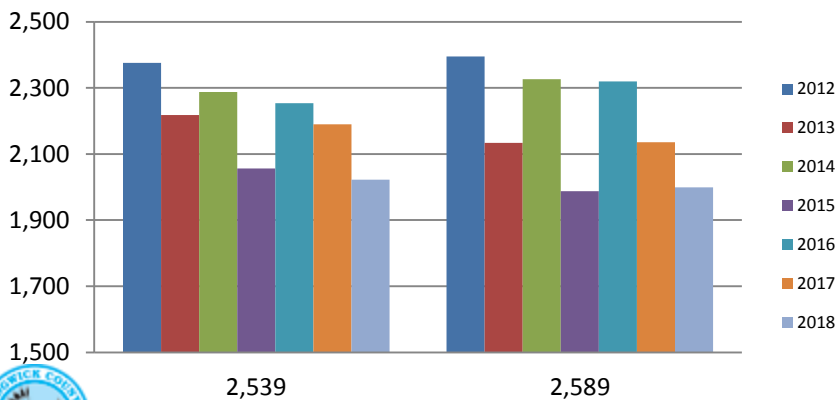
Sedgwick County...
working for you

Detention Facility

Booking Admits & Housing Discharges from Custody June 2016-Present



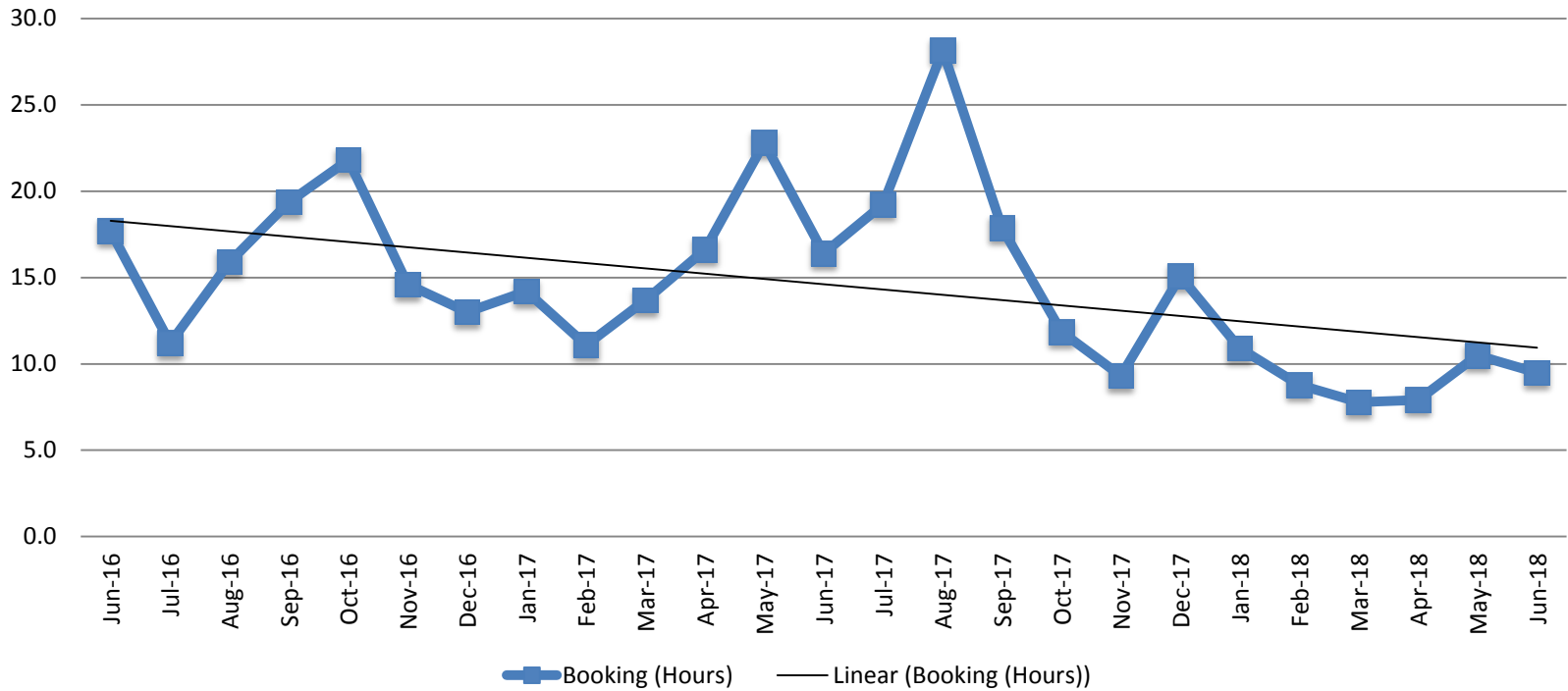
Bookings Year over Year: Month of June



Bookings June	Housing Discharges June
2016: 2,254	2016: 2,320
2017: 2,190	2017: 2,136
2018: 2,022	2018: 1,999

2,539 2,589
(data obtained from detention facility)

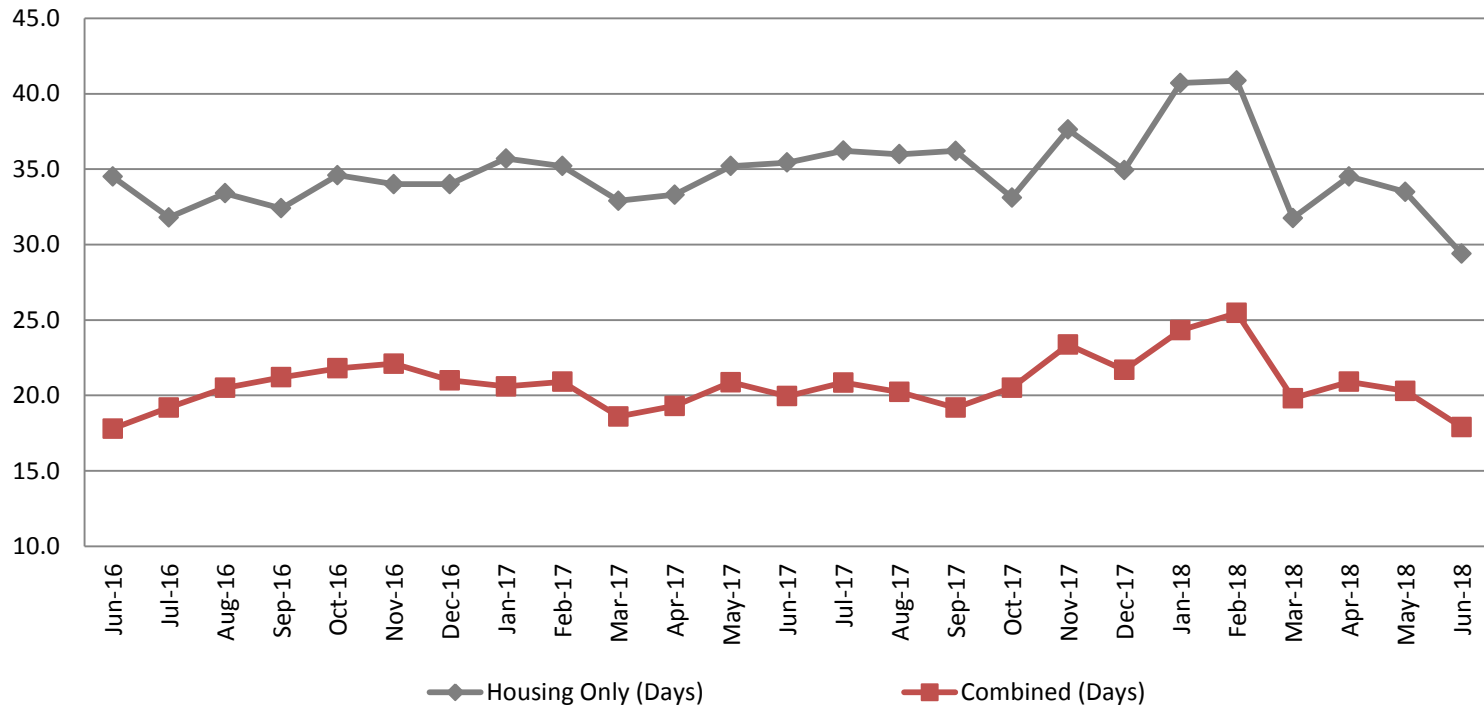
Average Length of Stay: Booking (Hours) June 2016 - Present



June		June YTD Average	
2016:	17.7	2016:	20.5
2017:	16.4	2017:	15.8
2018:	9.5	2018:	9.2



Average Length of Stay: Housing & Combined (Days) June 2016 - Present

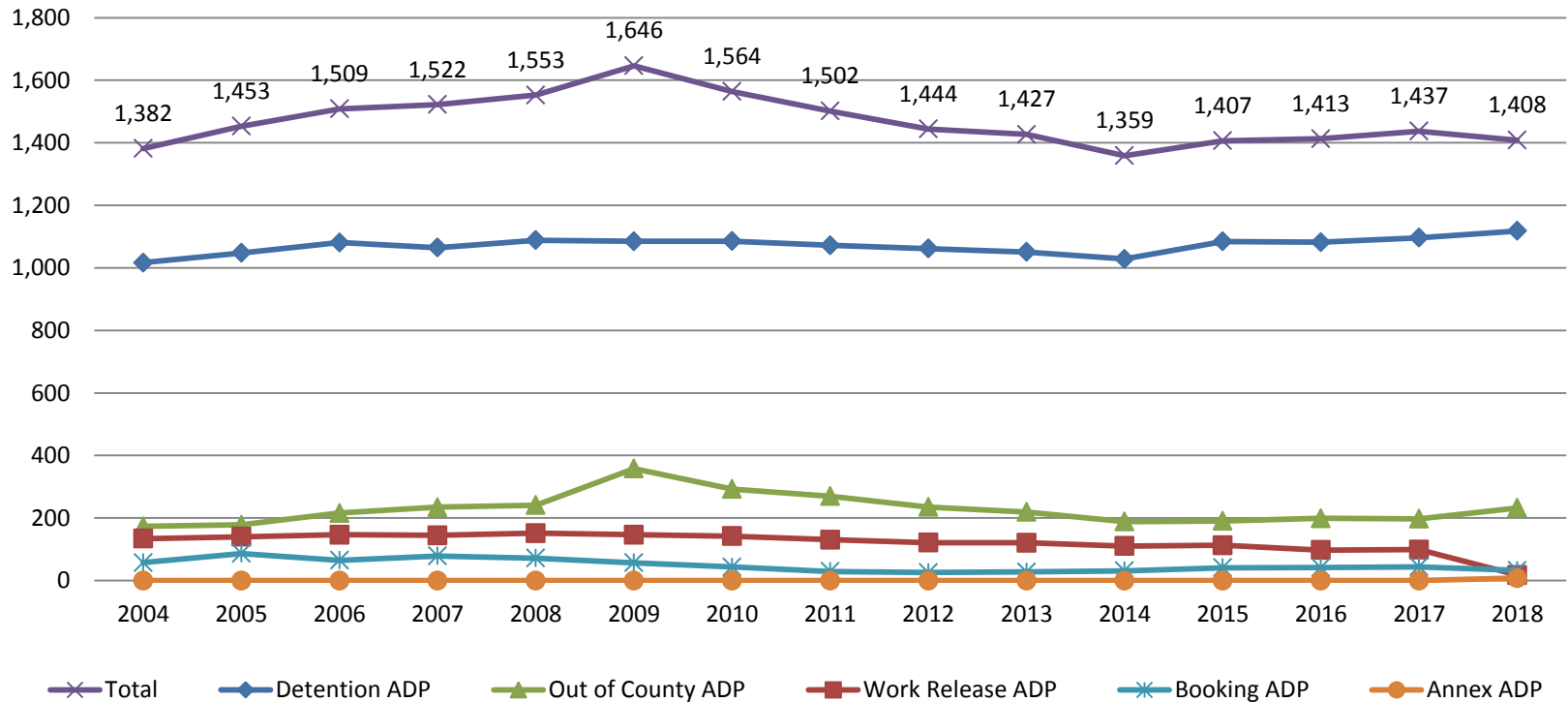


Month Year	Housing Only	Housing YTD AVG	Combined Days	Combined YTD AVG
June 2016	34.5	36.3	17.8	19
June 2017	35.4	34.6	20.0	20.0
June 2018	29.4	35.1	17.9	21.5



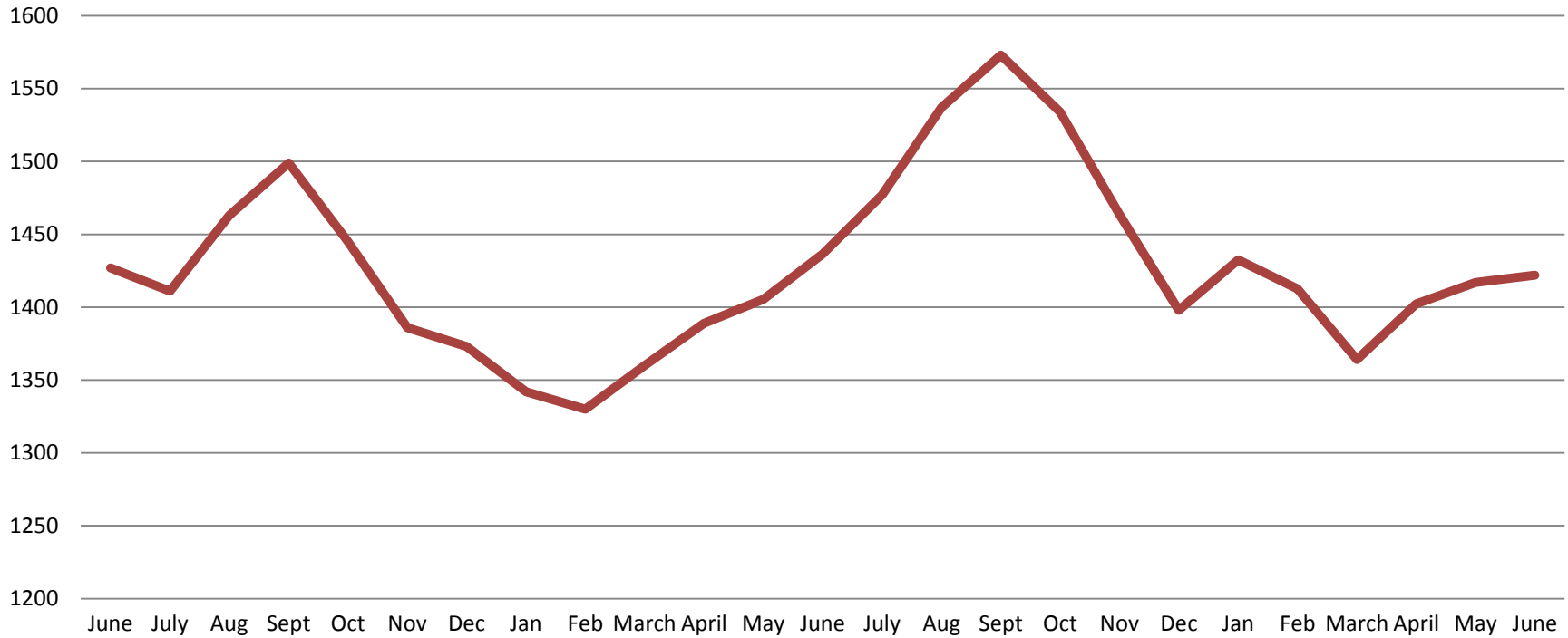
Jail: Annual Average Daily Population (ADP)

TRENDS: Booking, Detention, Work Release, & Out of County Annual ADP: 2004 - present



*Beginning January 2018, Work Release program began transfer to Division of Corrections

TOTAL MONTHLY ADP: JAIL (Booking, Detention Facility, Work Release, & Out of County) June 2016 - present

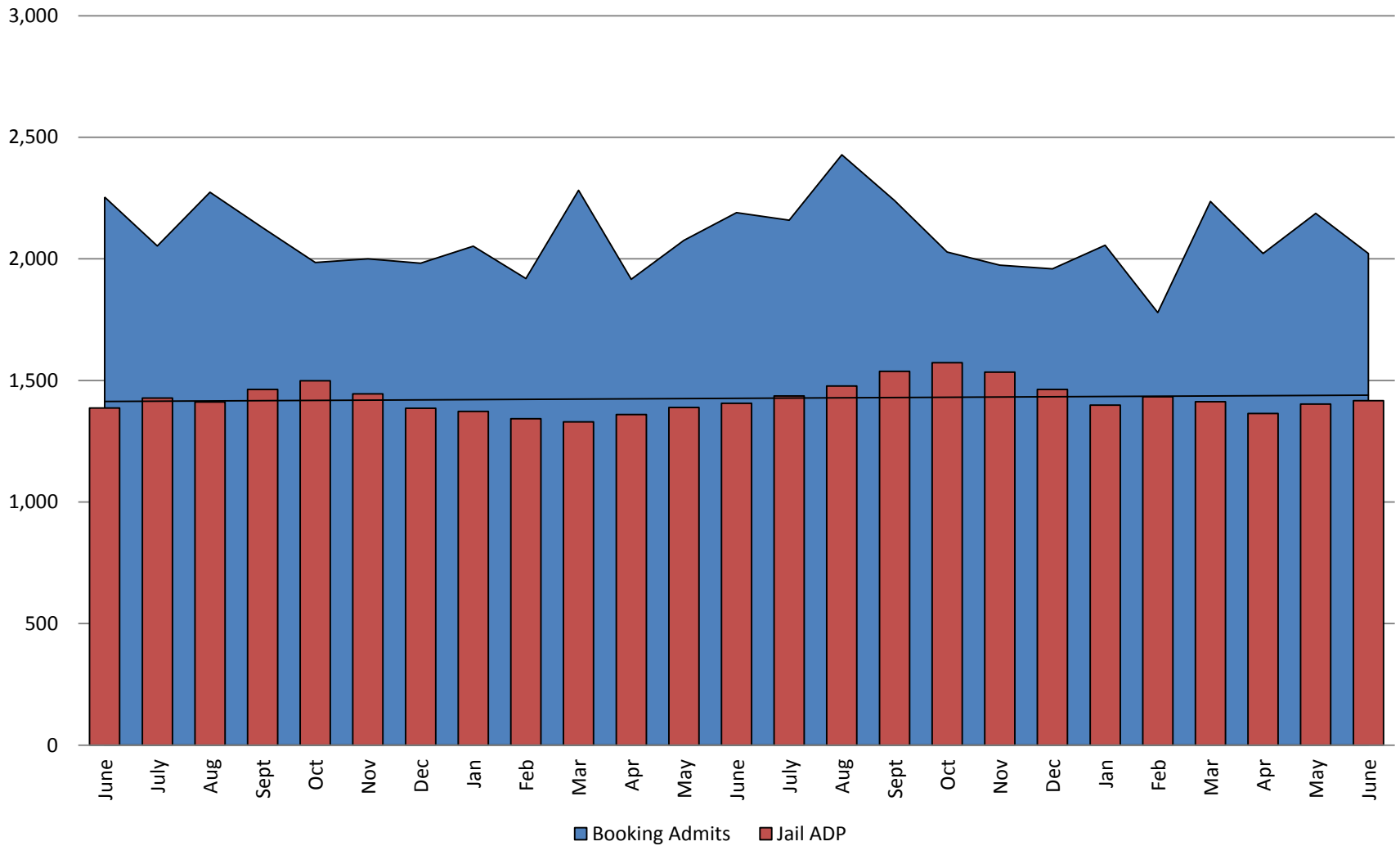


June 2016	June 2017	June 2018
1,427	1,436	1,422

*Beginning January 2018, Work Release program began transfer to Division of Corrections

This slide shows total monthly ADP for individuals in booking, detention, work release, jail annex, and out-of county (combined)
(data obtained from detention facility)

Booking Admits & Total Monthly ADP (Jail): June 2016 - present

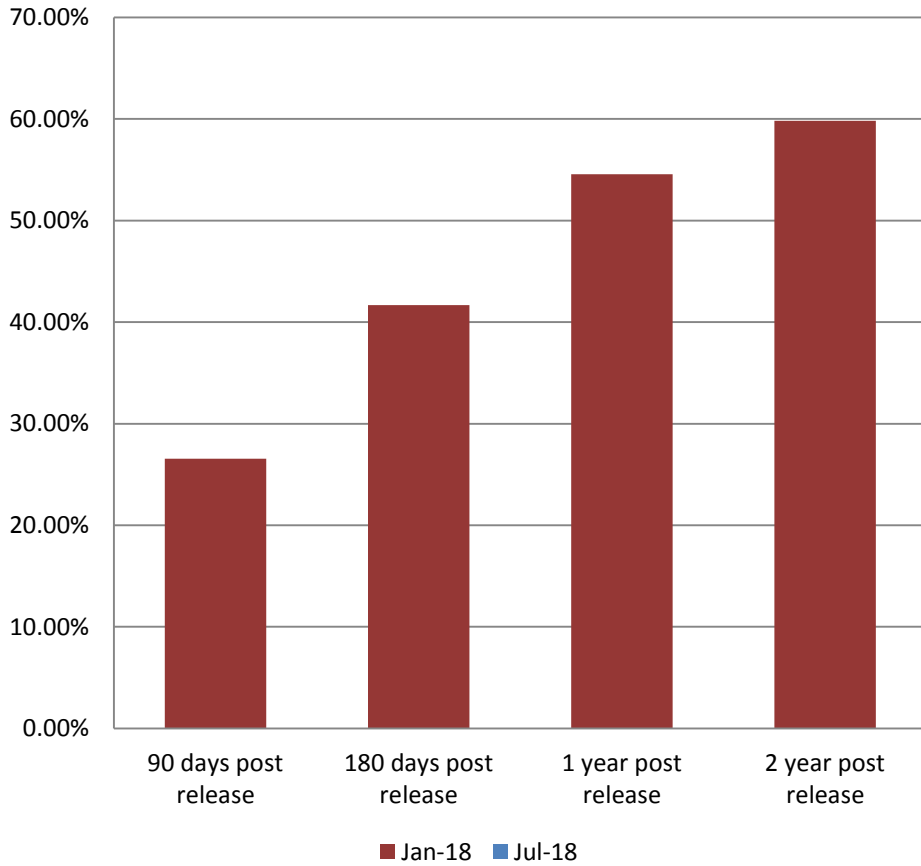


Jail includes individuals in booking, detention, work release and out-of county (combined)

(data obtained from detention facility)



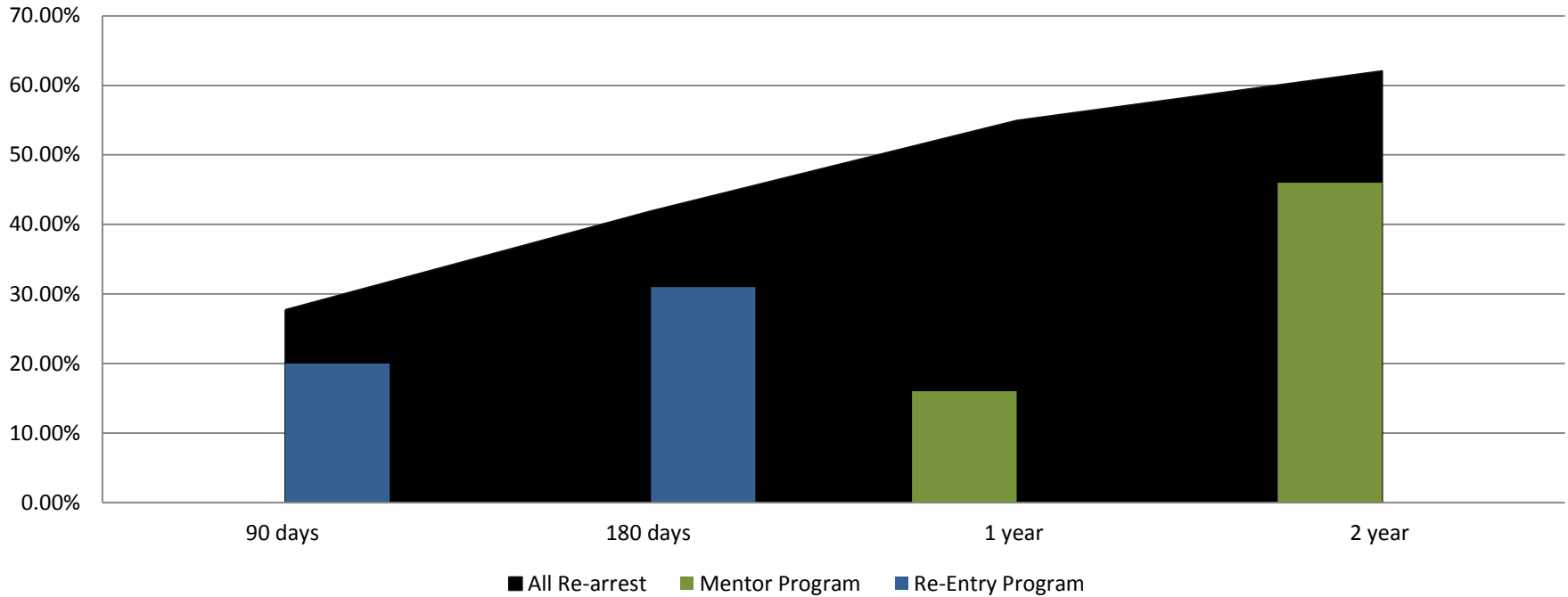
Percent of released inmates rearrested January & July comparison



Month Year	90 Days	180 Days	1 Year	2 Years
Jan 2018	26.55%	41.67%	54.57%	59.84%
Feb 2018	27.39%	40.22%	54.02%	61.03%
March 2018	28.00%	41.08%	51.69%	60.03%
April 2018	28.13%	39.41%	52.82%	62.93%
May 2018	29.80%	41.88%	52.18%	62.81%
June 2018	27.71%	41.92%	54.94%	62.07%

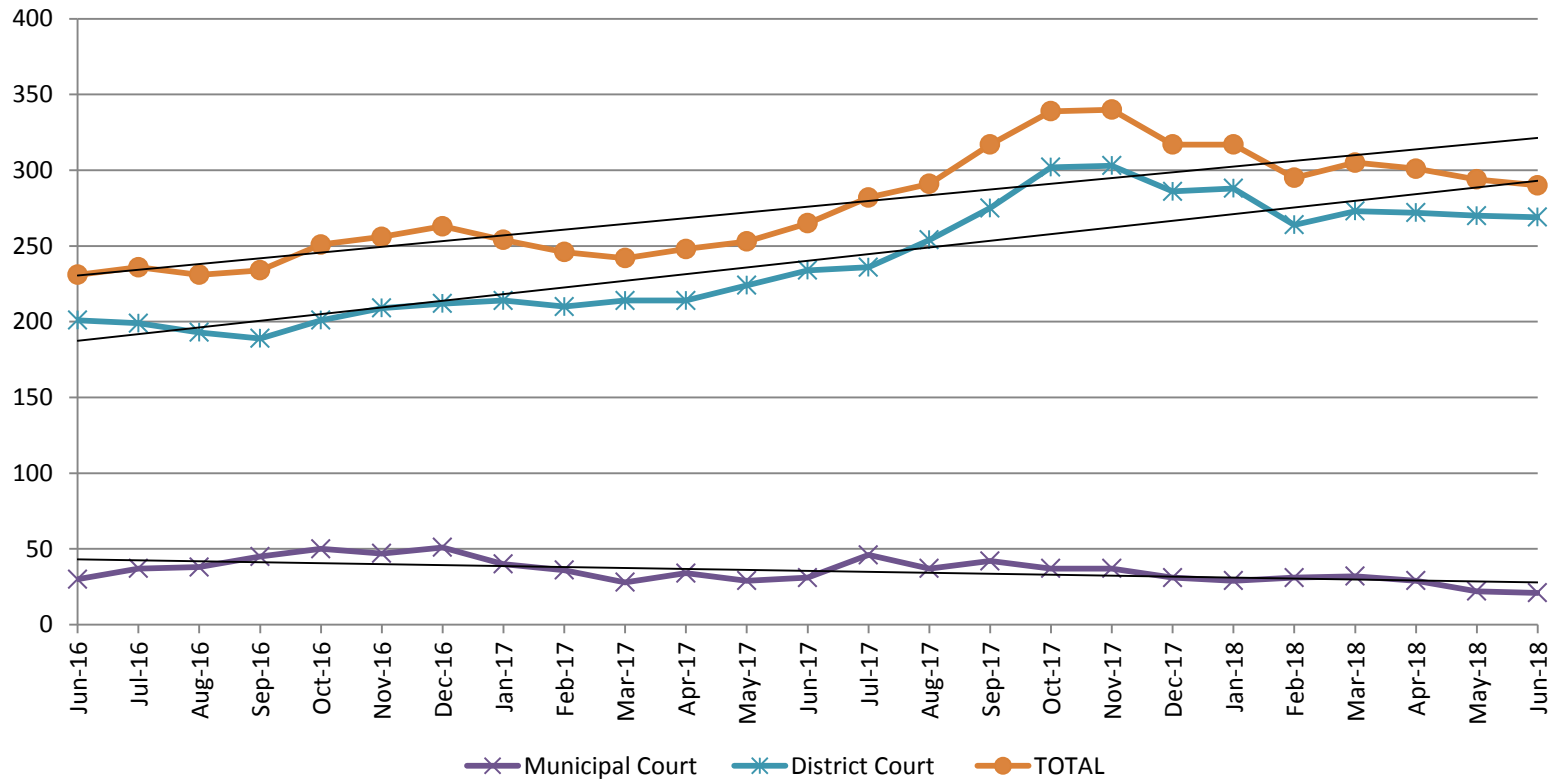


Recidivism for Programs June 2018



June 2018	90 Days	180 Days	1 year	2 years
All Re-arrests	27.71%	41.92%	54.94%	62.07%
Mentor Program	0%	0%	16%	46%
Re-Entry Program	20%	31%	N/A	N/A

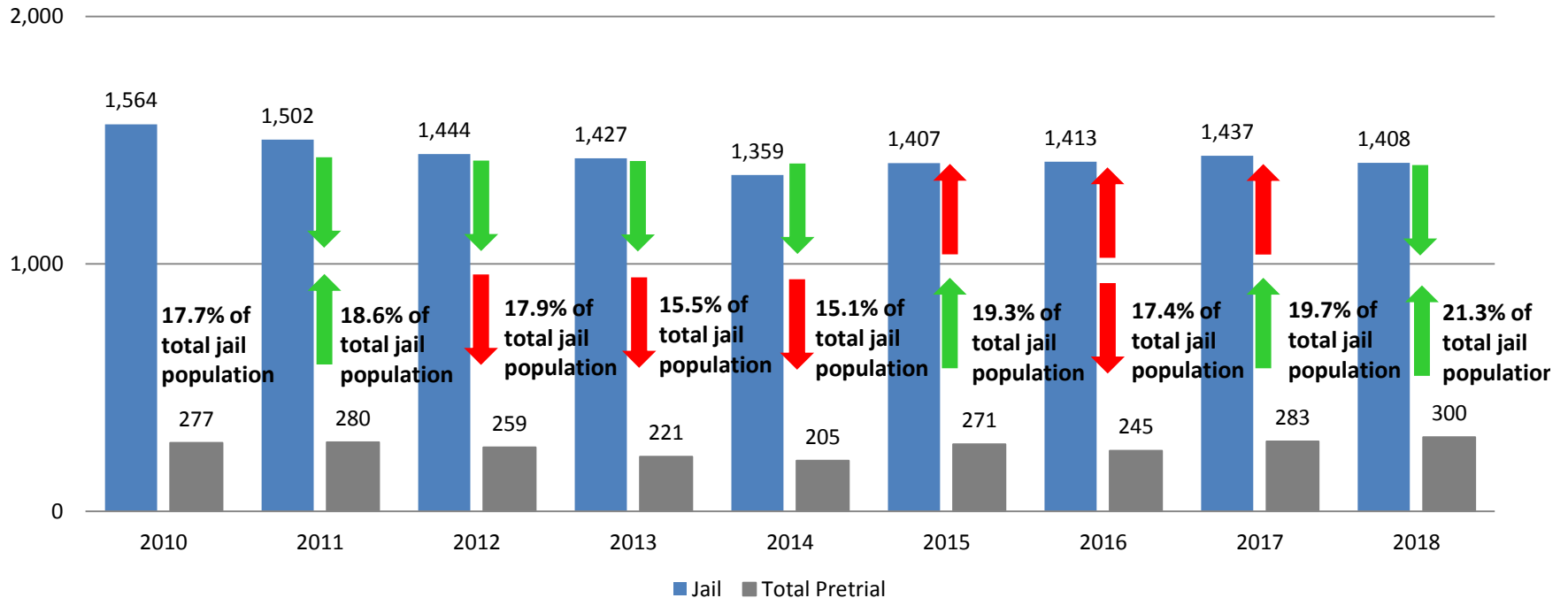
Pretrial Services Program (PSP) Monthly ADP: June 2016 - Present



June	2016 ADP	2017 ADP	2018 ADP	2016 YTD Avg.	2017 YTD Avg.	2018 YTD Avg.
Muni. Court	30	31	21	30	33	27
Dist. Court	201	234	269	214	218	273
Total	231	251	290	246	249	300

Correlation: Total & PSP

Total Annual ADP: 2010 - Present



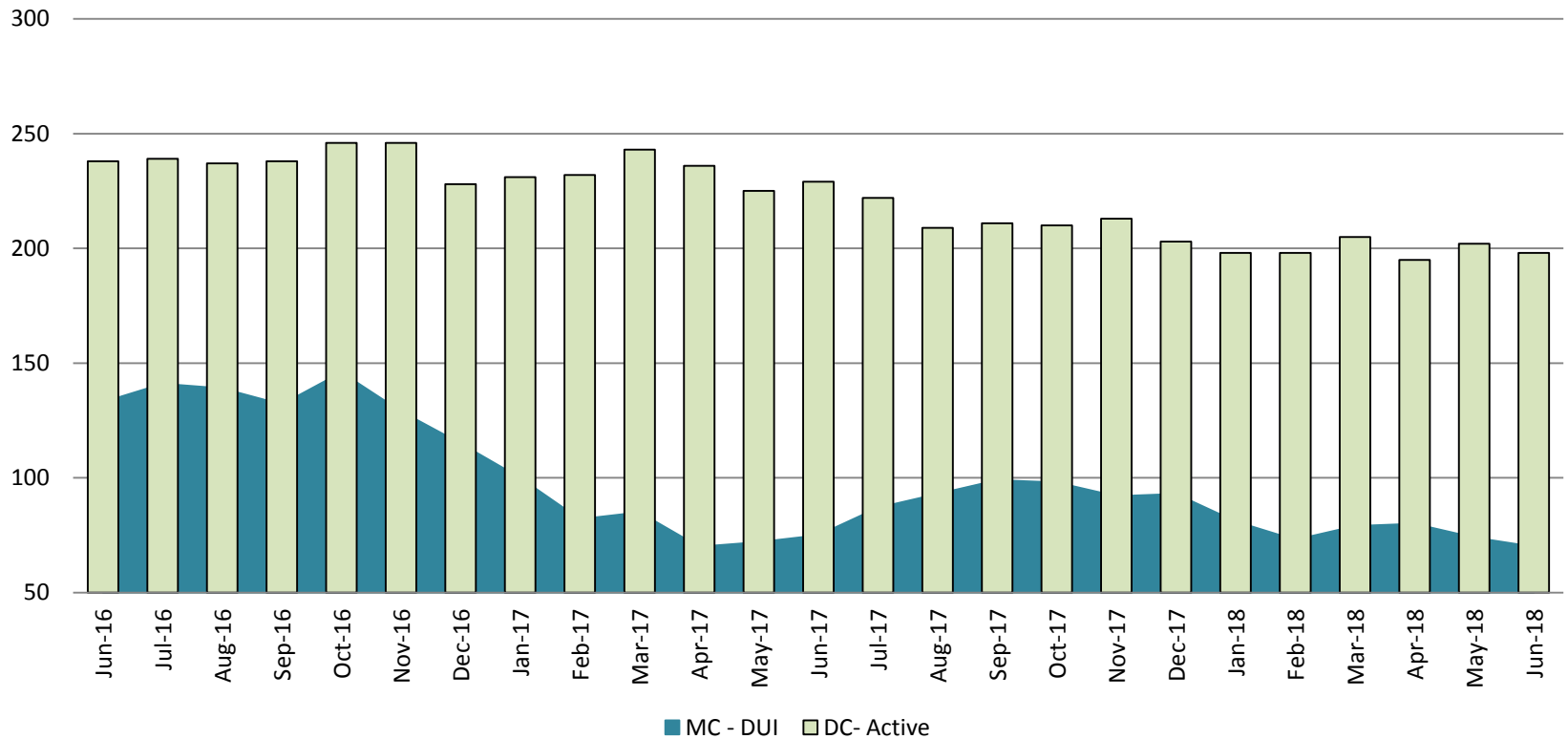
Arrows represent the overall increase/decrease of the population from year to year

Jail includes individuals in booking, detention, work release and out-of county (combined)



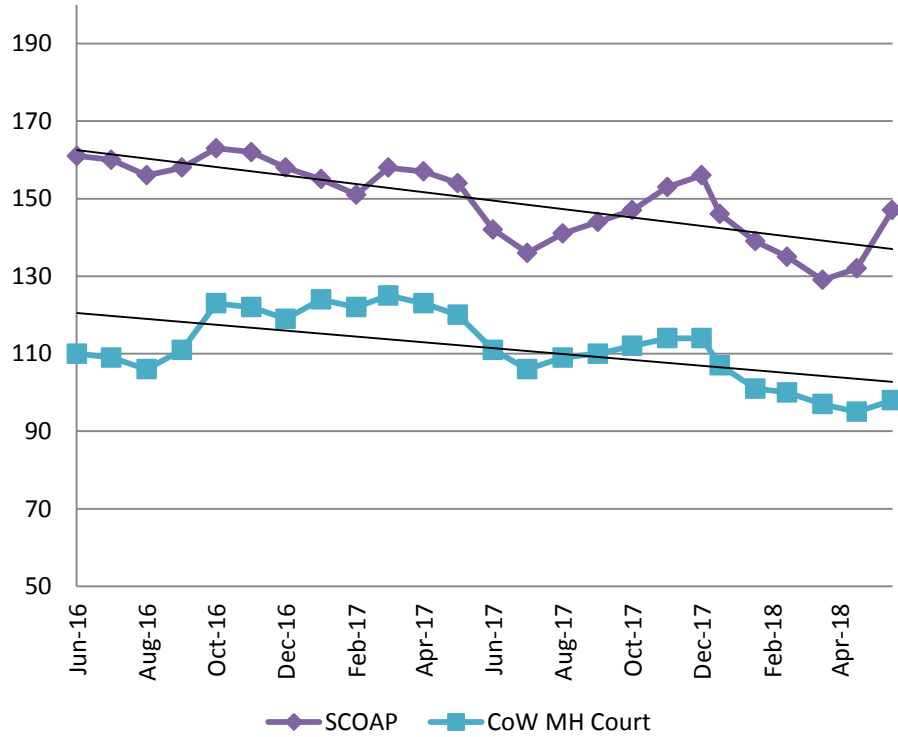
Diversion - Active Caseload

June 2016 - Present

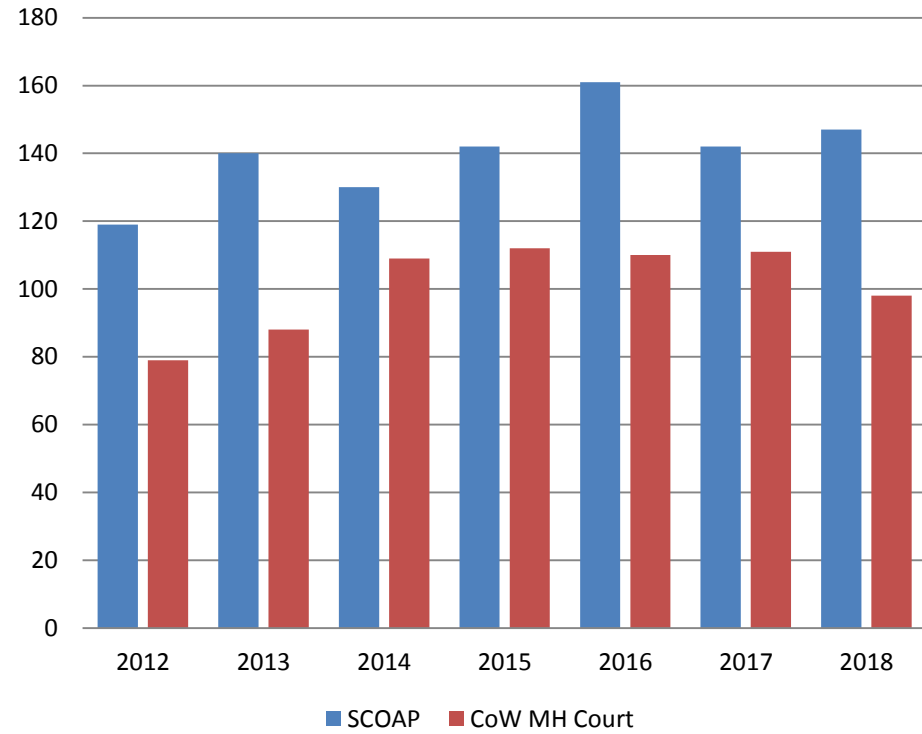


June	2016	2017	2018	2016 YTD Avg.	2017 YTD Avg.	2018 YTD Avg.
Muni. Court- DUI	133	75	70	159	81	78
Dist. Court- Active	238	229	198	234	233	199

Mental Health - ADP June 2016 - present

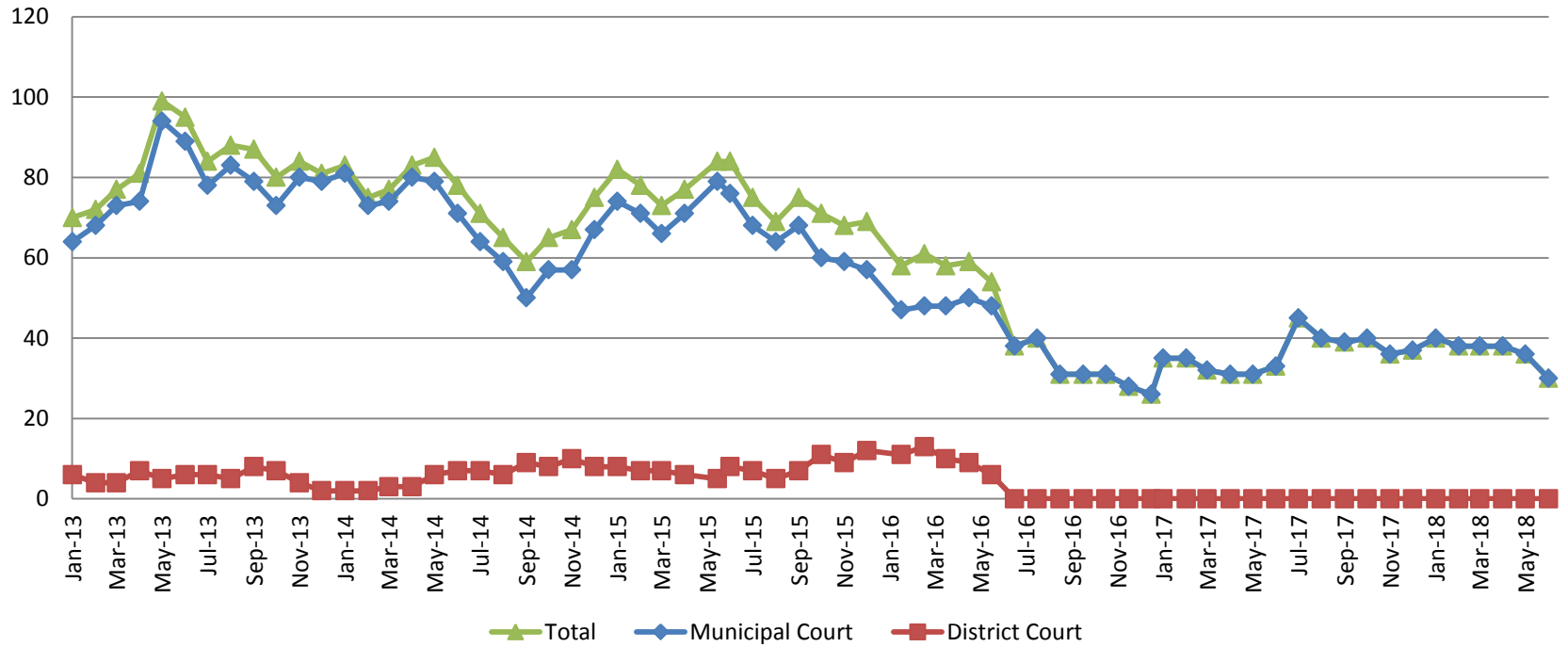


Mental Health ADP Year over Year- June



June	2016 ADP	2017 ADP	2018 ADP	2016 YTD Avg.	2017 YTD Avg.	2018 YTD Avg.
SCOAP	161	142	147	159	153	138
MH Court	110	111	98	101	121	100

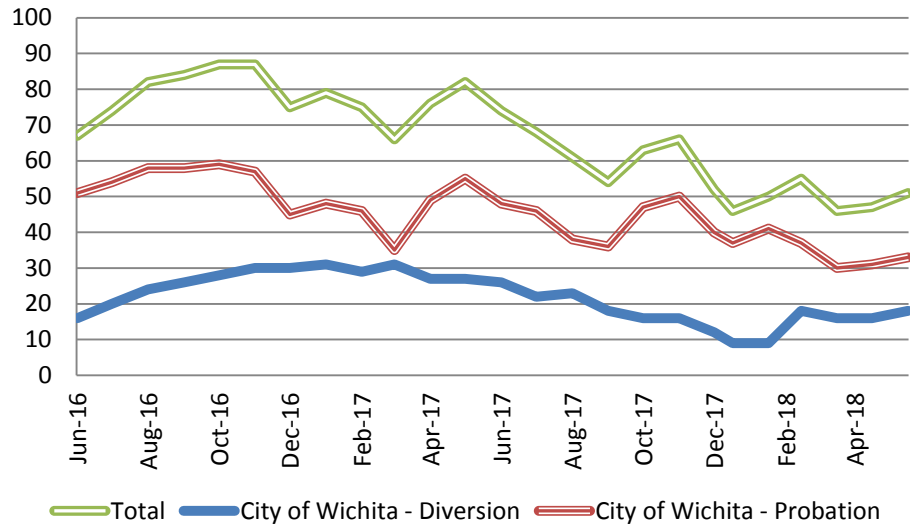
Day Reporting - Active Caseload 2013-present



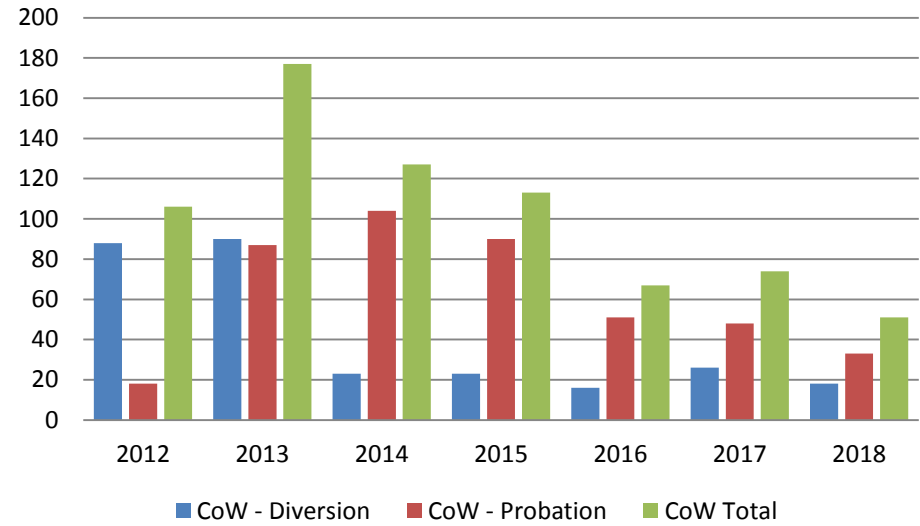
June	2013	2014	2015	2016	2017	2018
Muni. Court	89	71	73	38	33	30
Muni. Court YTD Avg.	77	76	73	47	33	37



Drug Court - City of Wichita ADP: June 2016- present



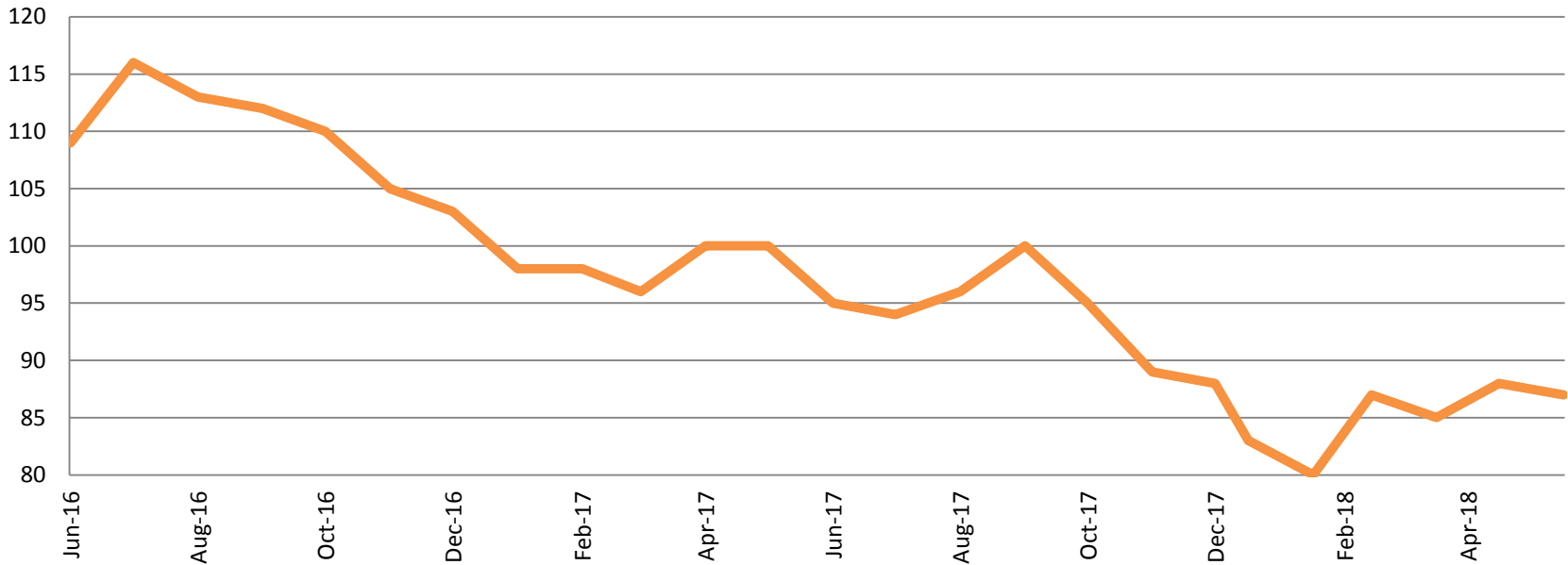
Drug Court- City of Wichita Year over Year- June



June	2016	2017	2018
Diversion	16	26	18
Probation	51	48	33
Total	67	74	51

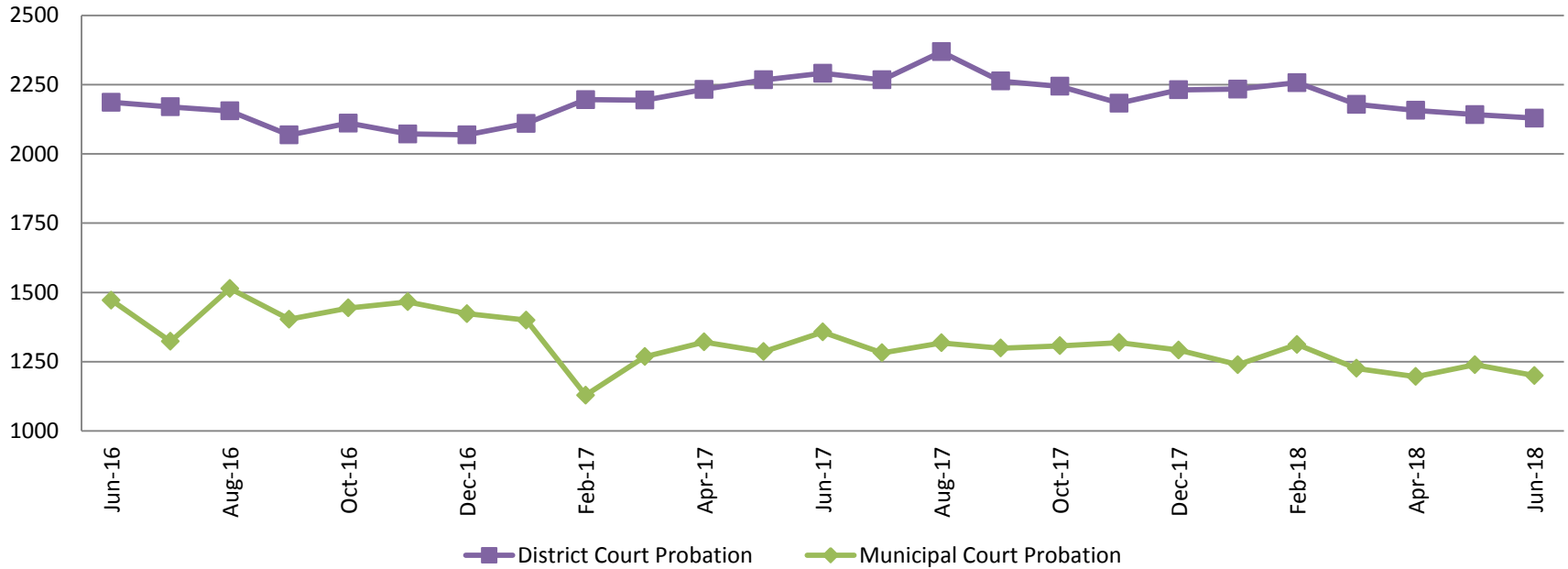


Drug Court - Sedgwick County ADP: June 2016 - present



	June	2016	2017	2018
Sedg. Co. ADP		109	95	87
YTD Avg.		109	98	85

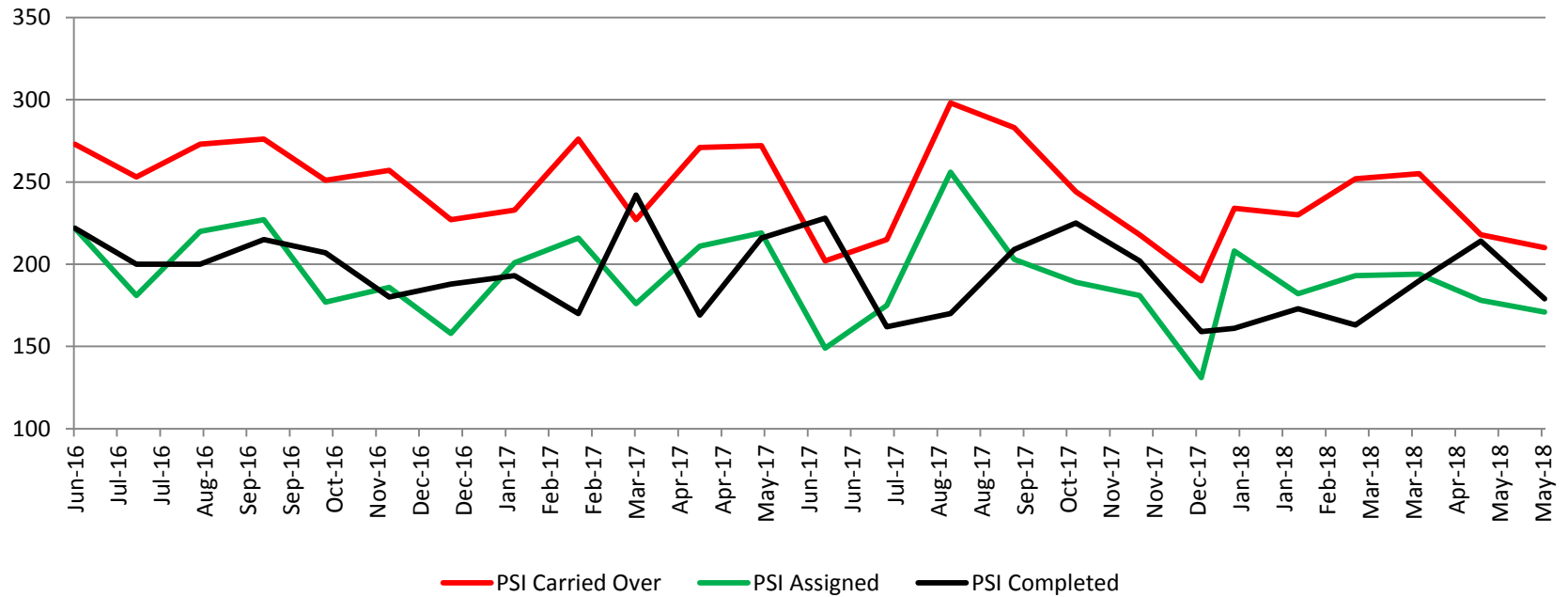
Probation - Active Caseloads June 2016 - present



June	2016	2017	2018	2016 YTD Avg.	2017 YTD Avg.	2018 YTD Avg.
Dist. Court Probation	2155	2369	2062	2235	2250	2131
Muni. Court Probation	1472	1357	1120	1561	1294	1235



District Court Probation: Pre-Sentence Investigation June 2016 - present

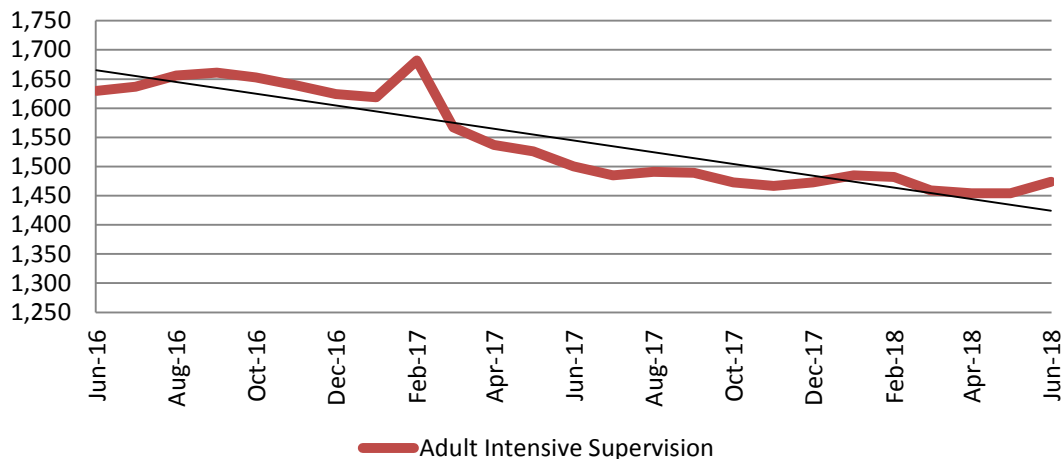


	June 2016	2017	2018
Carried Over	273	202	210
Assigned	222	149	171
Completed	222	228	179



Community Corrections

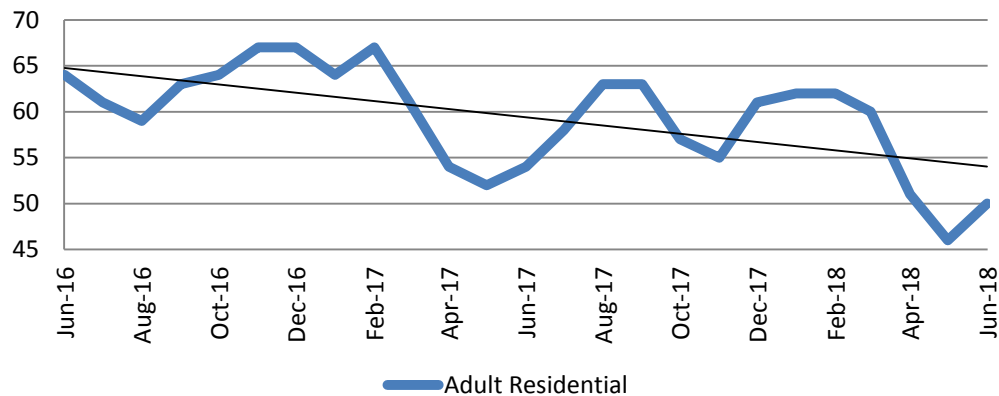
Adult Intensive Supervision Probation (AISP): ADP
June 2016- present



Year	June	June YTD Avg.
2016	1,630	1,612
2017	1,500	1,572
2018	1,474	1,468

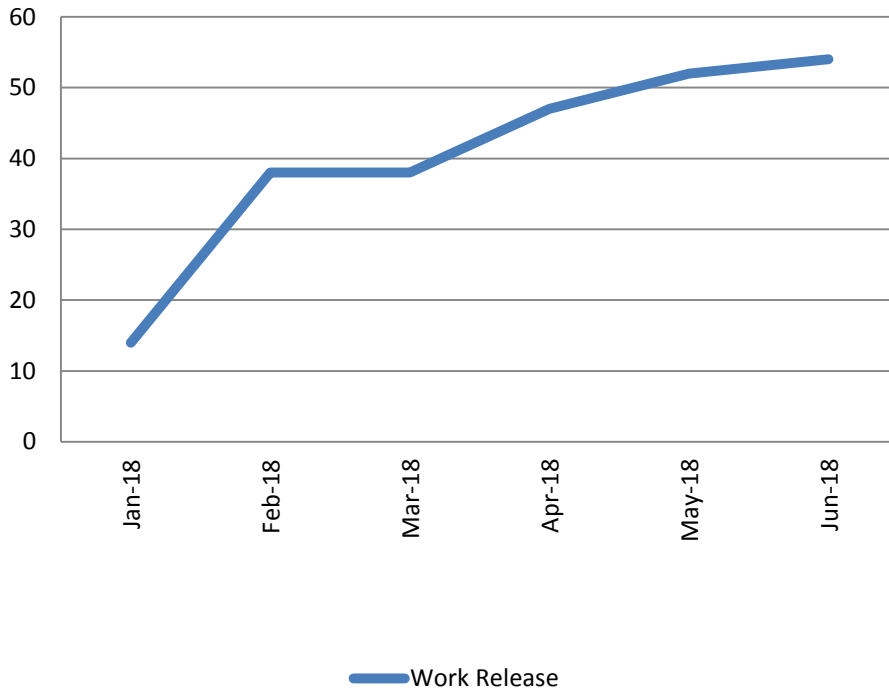
Year	June	June YTD Avg.
2016	64	63
2017	54	59
2018	50	55

Adult Residential: ADP
June 2016- present



Community Corrections

**Work Release: ADP
Jan 2018- present**

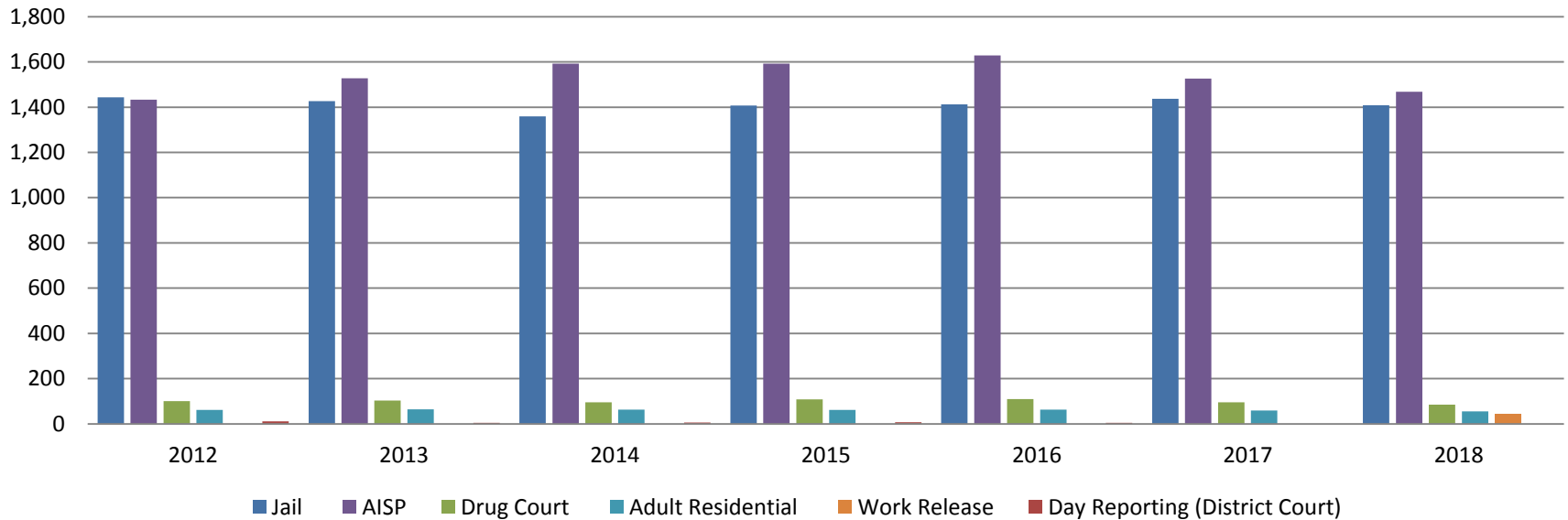


Month	Total	YTD Avg.
January	14	14
February	38	26
March	38	30
April	47	34
May	52	38
June	54	41



Correlation: Total & Sedgwick County Programs (Adult)

Total Annual ADP 2012-Present



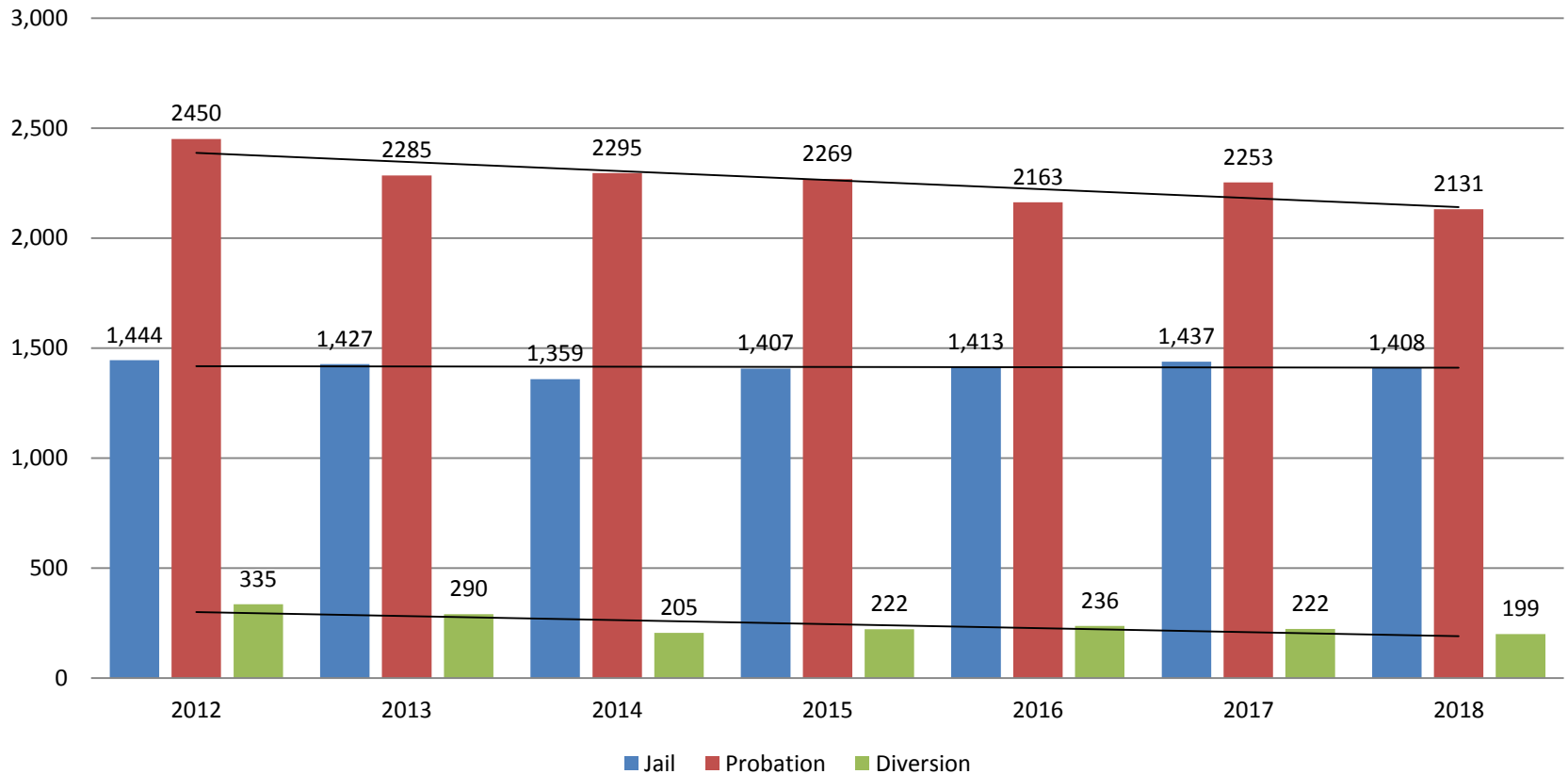
	2016	2017	2018
Jail	1,413	1,437	1,408
AISP	1,629	1,526	1,468
Drug Court	109	96	85
Adult Residential	63	59	55
Work Release	0	0	41
Day Reporting (DC)	4	0	0



Jail includes individuals in booking, detention, work release and out-of county (combined)
 Sedgwick County... working for you (data obtained from detention facility, SG Dept. of Corrections, Pretrial Services, & CoW)

Correlation: Total & District Court Programs

Total Annual ADP: 2012 - Present

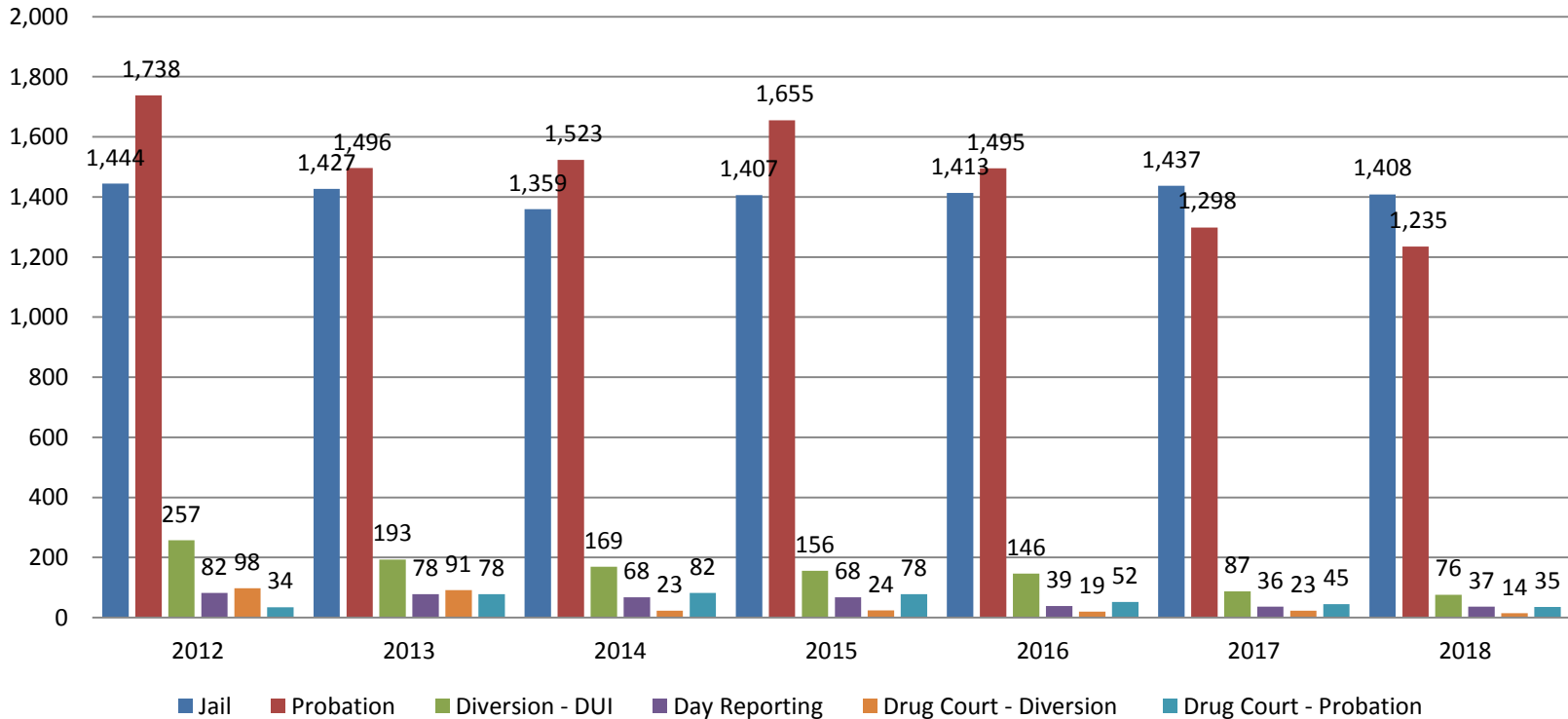


Jail includes individuals in booking, detention, work release and out-of county (combined)



Correlation: Total & City of Wichita / Municipal Court Programs

Total Annual ADP: 2012 - present

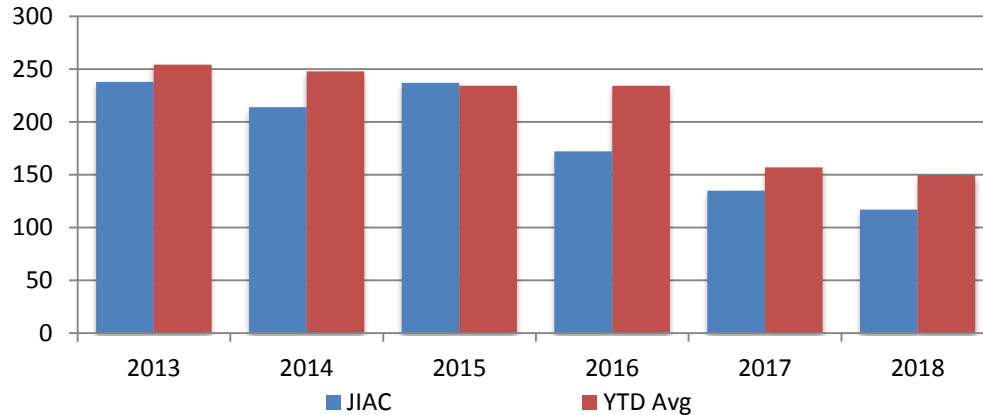


Jail includes individuals in booking, detention, work release and out-of county (combined)



Juvenile

**Jiac Intakes
June 2013 - present**



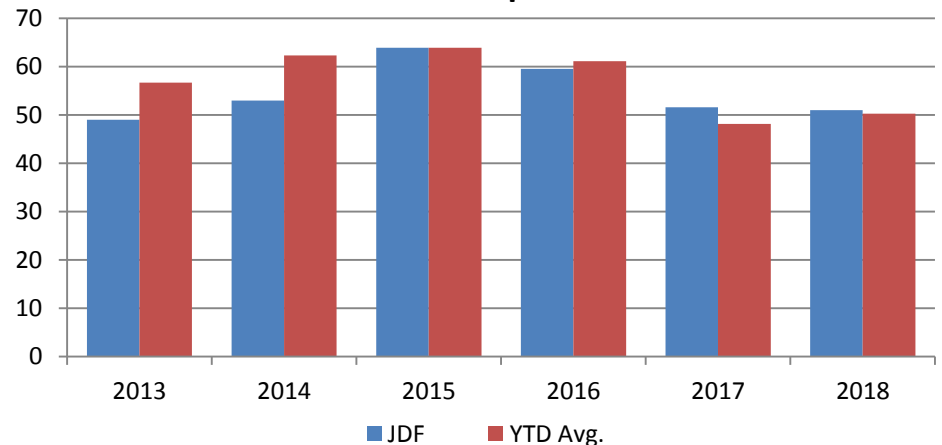
Year June June YTD Avg.

2013	238	254
2014	214	248
2015	237	234
2016	172	234
2017	135	157
2018	117	150

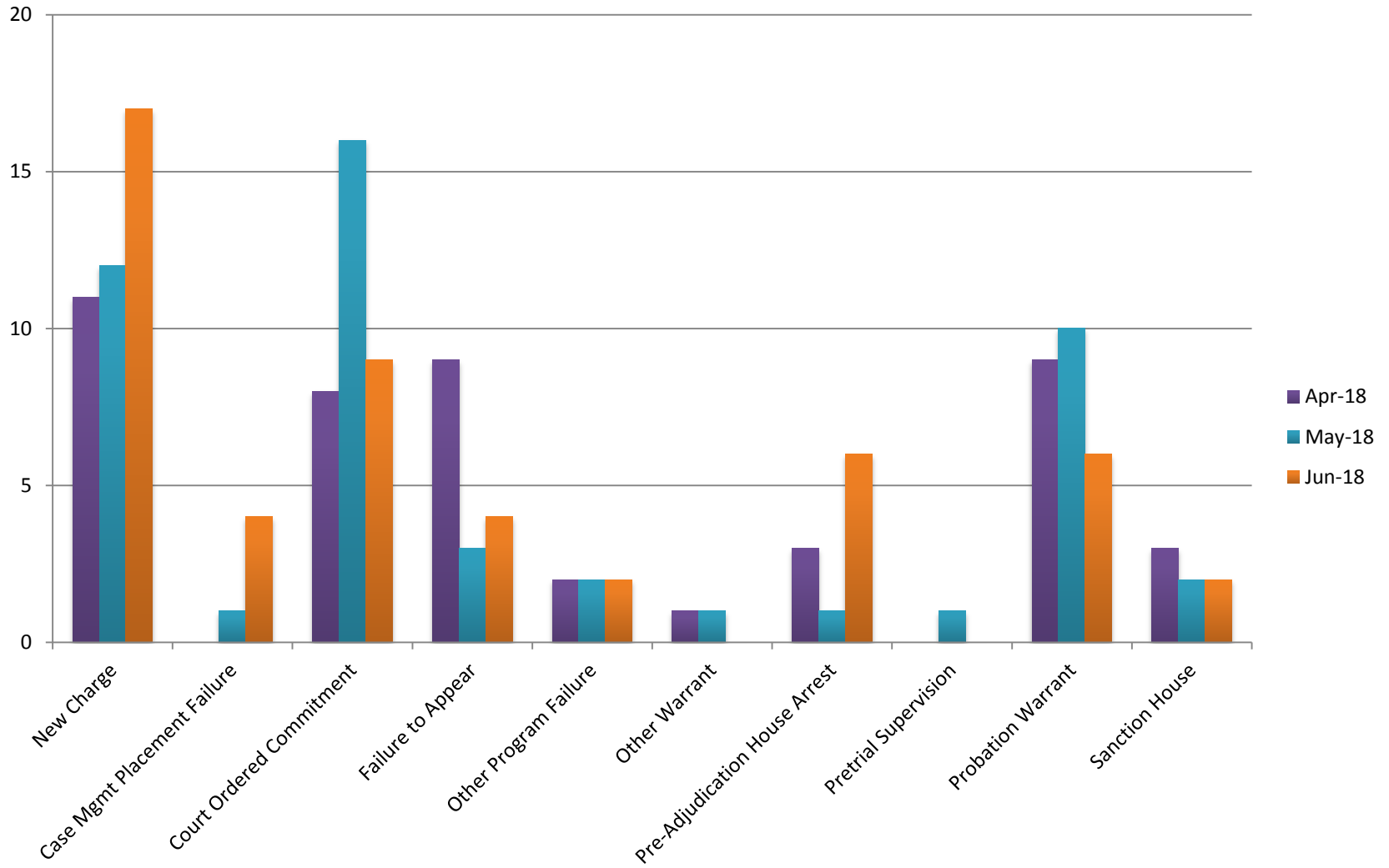
Year June June YTD Avg.

2013	49	57
2014	53	62
2015	64	64
2016	60	61
2017	52	48
2018	51	50

**JDF ADP
June 2013 - present**



Reason for JDF Admits



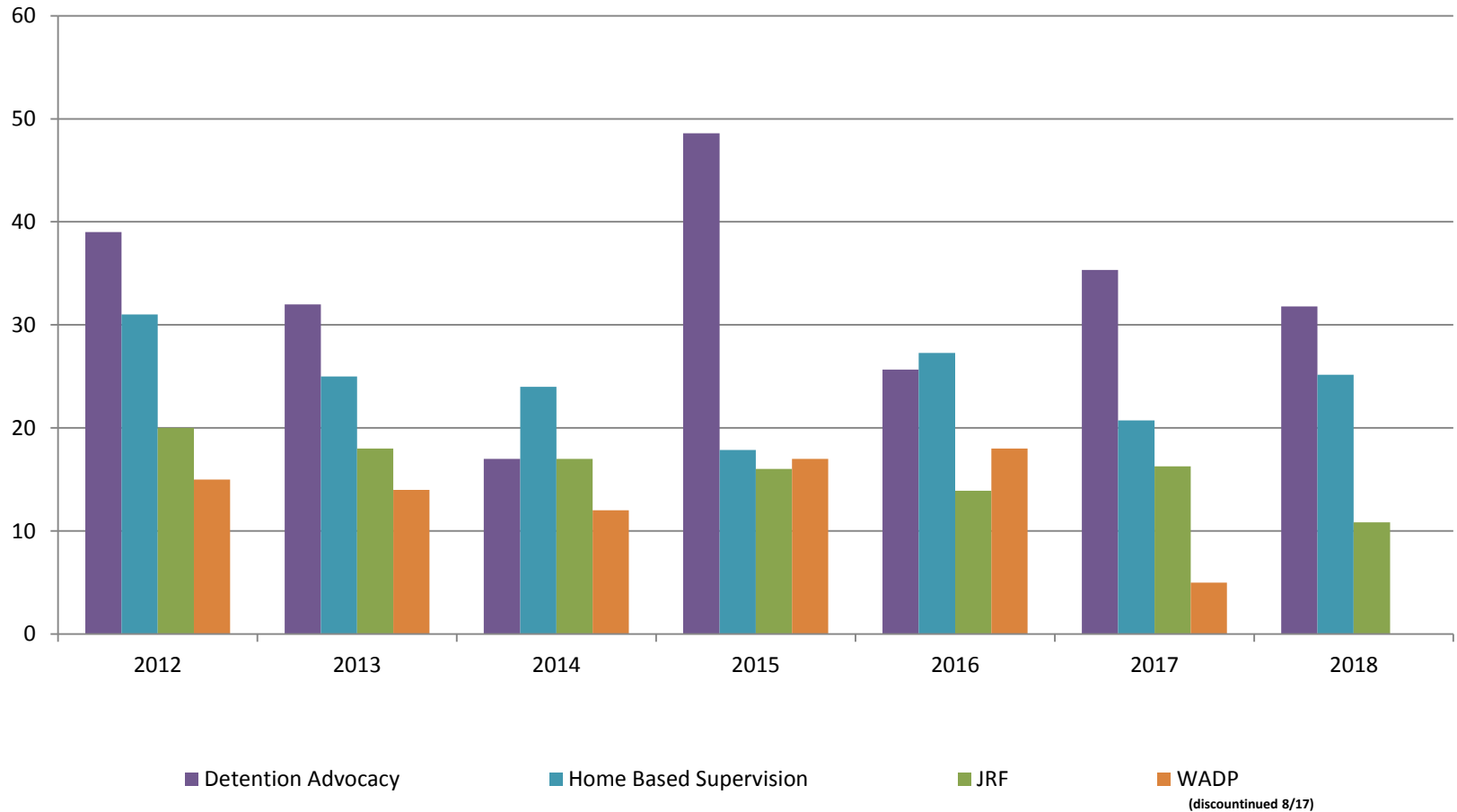
Reason for JDF Admits

Reason	Jan 2018	Feb 2018	March 2018	April 2018	May 2018	June 2018
New Charges	11	11	20	11	12	17
Case Management Placement Failures	0	0	0	0	1	4
Court Ordered Commitment	4	5	10	8	16	9
Failure to Appear	5	4	4	9	3	4
Other Program Failure	0	2	6	2	2	2
Other Warrant	4	6	4	1	1	0
Pre-Adjudication House Arrest	2	7	6	3	1	6
Pretrial Supervision	1	2	3	0	1	0
Probation Warrant	6	4	10	9	10	6
Sanction House	7	0	4	3	2	2



Juvenile Detention Alternatives

ADP: June 2012 - Present



(discontinued 8/17)



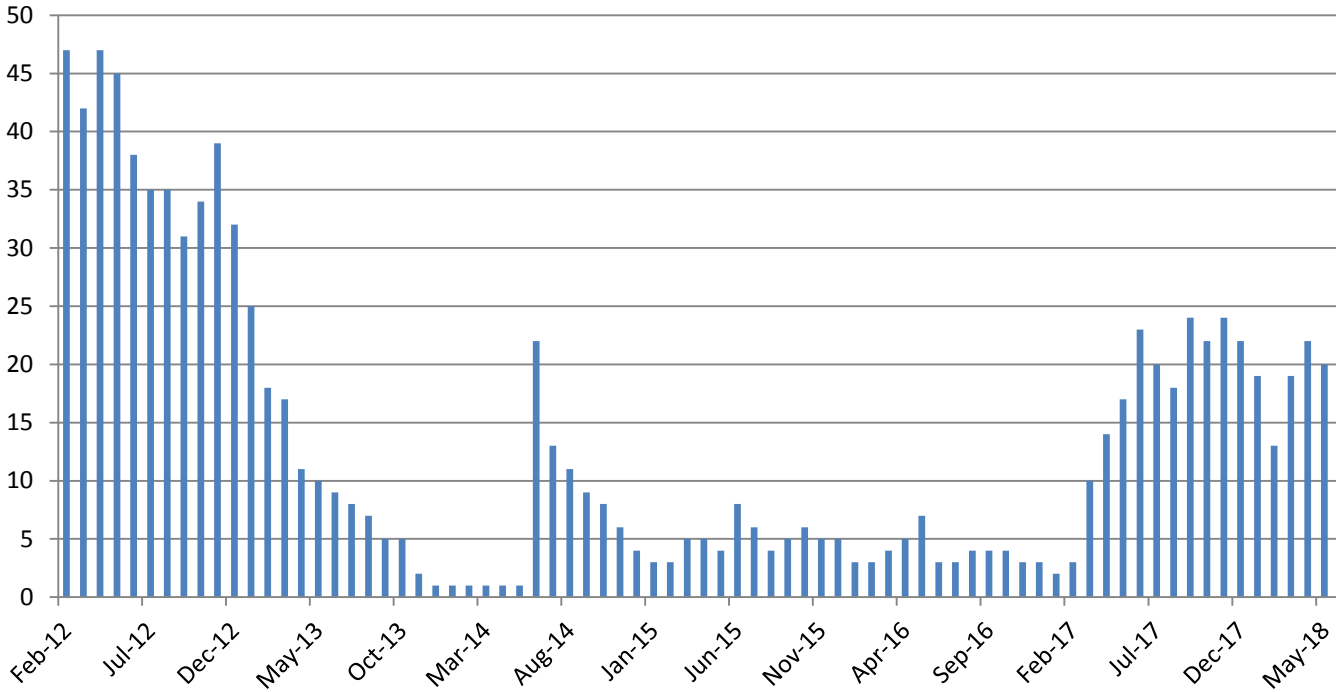
Juvenile Detention Services

June ADP	2015	2016	2017	2018
Juvenile Detention Facility	64	60	52	51
Juvenile Residential Facility	16	14	16	11
Home Based Supervision	18	27	21	25
Detention Advocacy Case Management Services	49	26	35	32
Weekend Alternative Detention Program (total)	17	18	5	0

June YTD AVERAGE	2015	2016	2017	2018
Juvenile Detention Facility	64	61	48	50
Juvenile Residential Facility	17	16	14	12
Home Based Supervision	22	26	23	27
Detention Advocacy Case Management Services	45	33	35	32
Weekend Alternative Detention Program	22	16	16	0

Monthly Jail Snapshot: June 30, 2018

BICE Holds 2012-Present

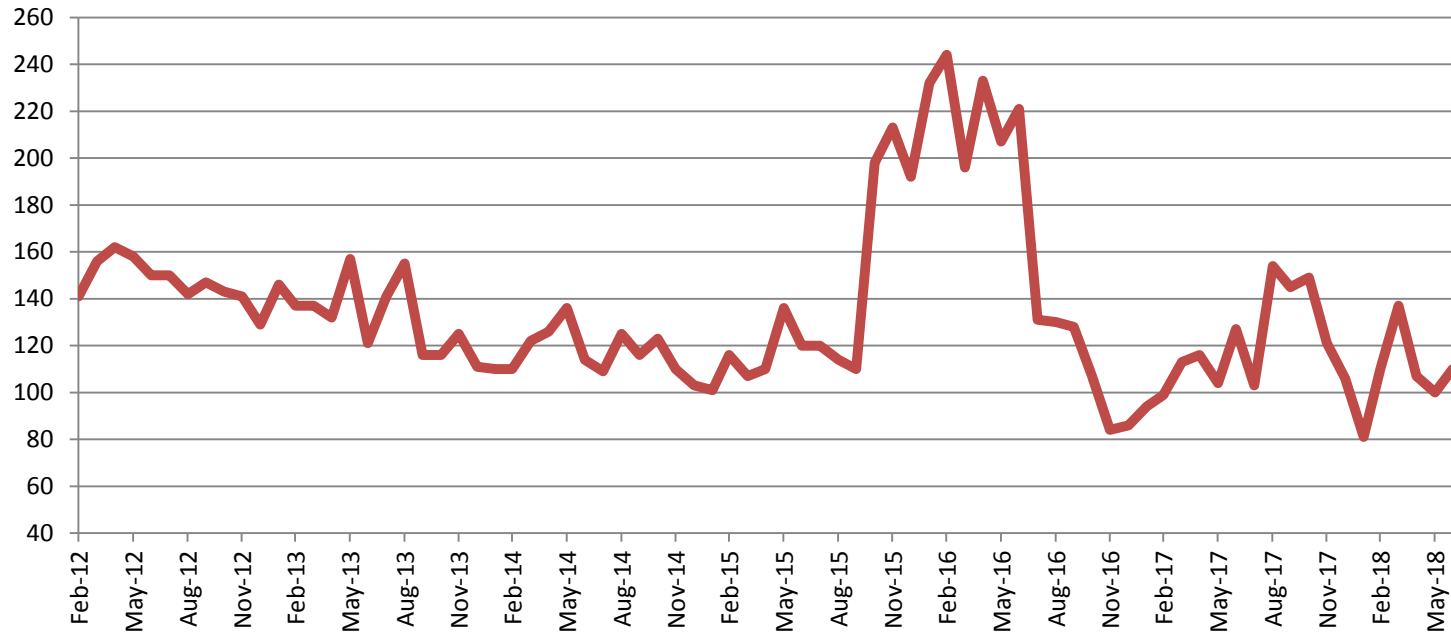


2013	2014	2015	2016	2017	2018
8	13	6	3	20	25



Monthly Jail Snapshot: June 30, 2018

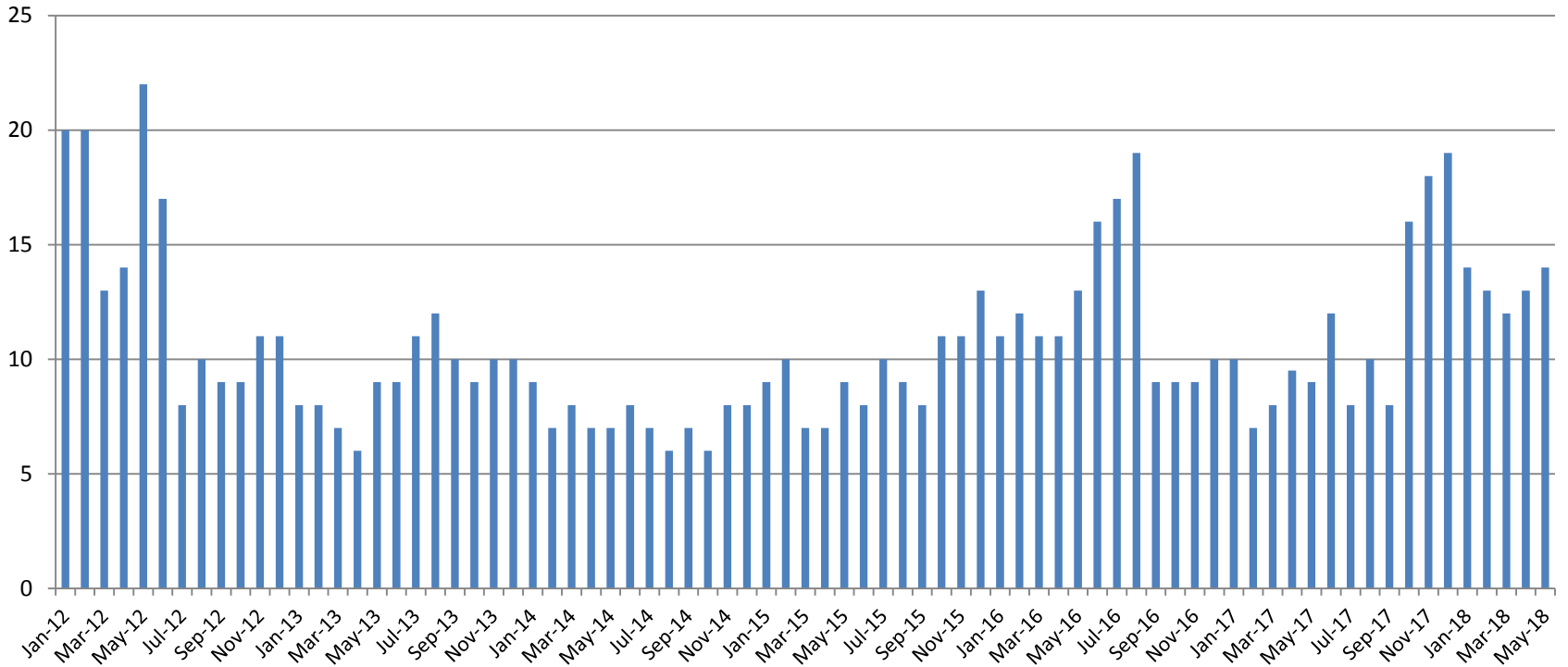
Felony Commitments: February 2012 - present



2013	2014	2015	2016	2017	2018
121	114	120	221	127	110



Journal Entry Completion (Average Days) January 2013-Present



May	2013	2014	2015	2016	2017	2018
Avg. Days	9	7	9	13	9	14
YTD Avg.	8	8	8	12	9	13.2

