

Criminal Justice Coordinating Council

Population Report & Program Trends

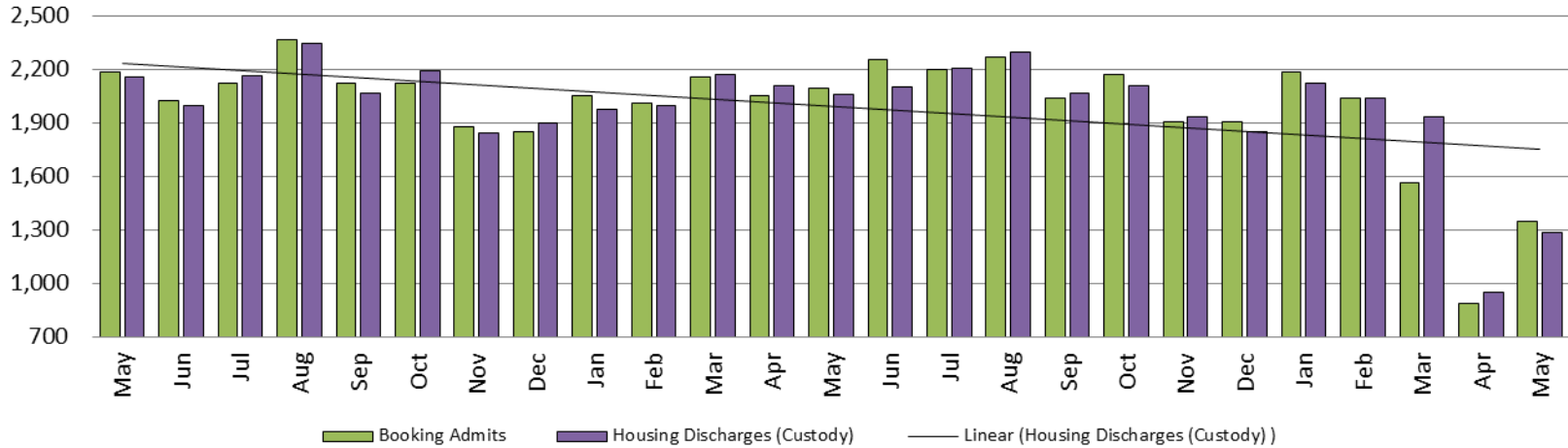
June 2020



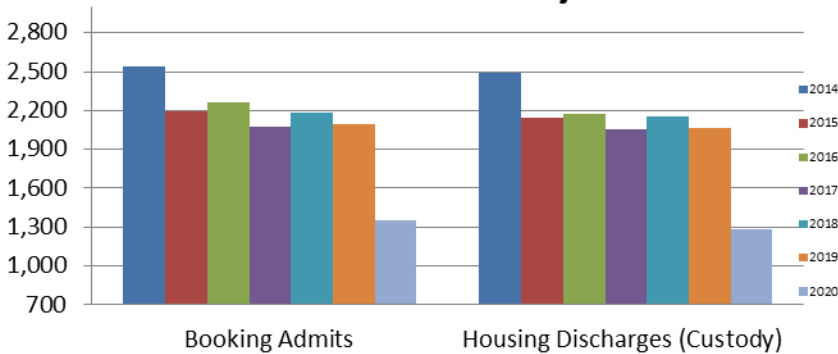
Sedgwick County...
working for you

Detention Facility

Booking Admits & Housing Discharges from Custody May 2018 - present

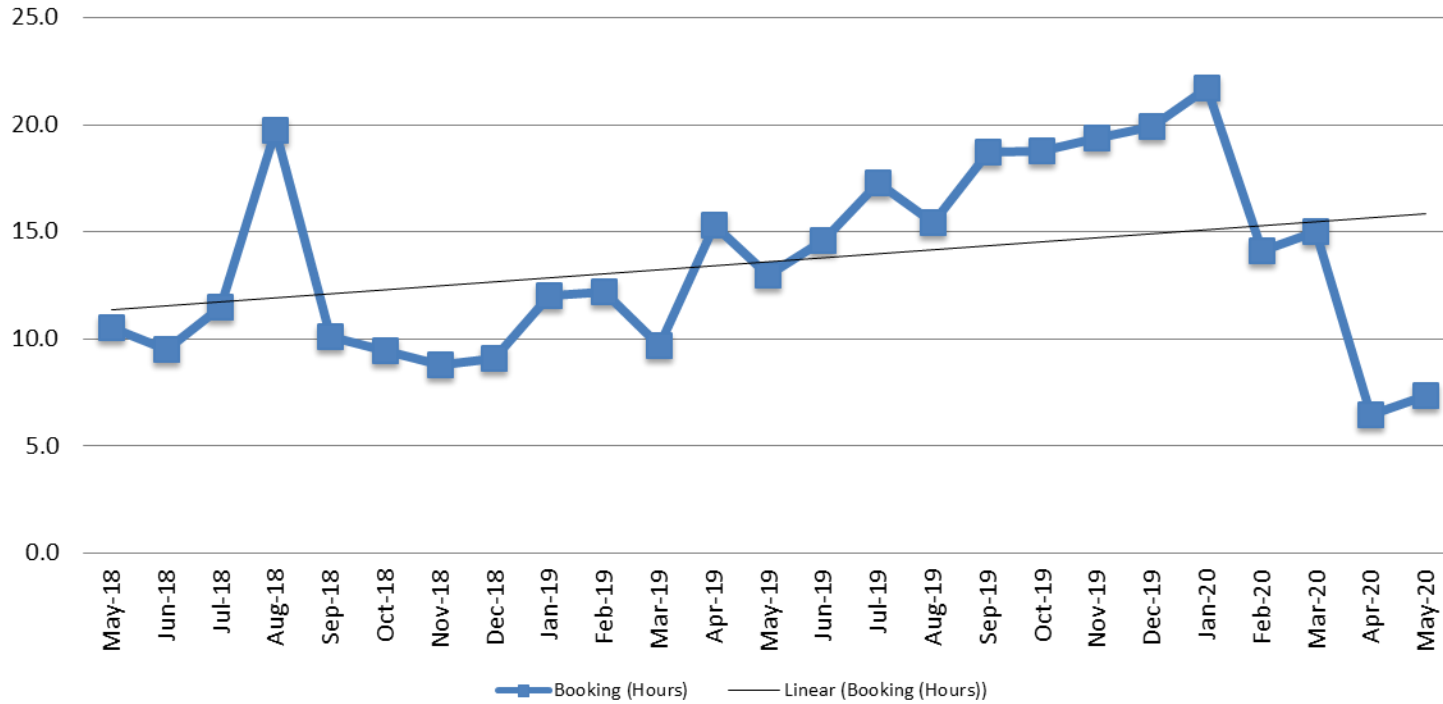


Bookings Year over Year: Month of May



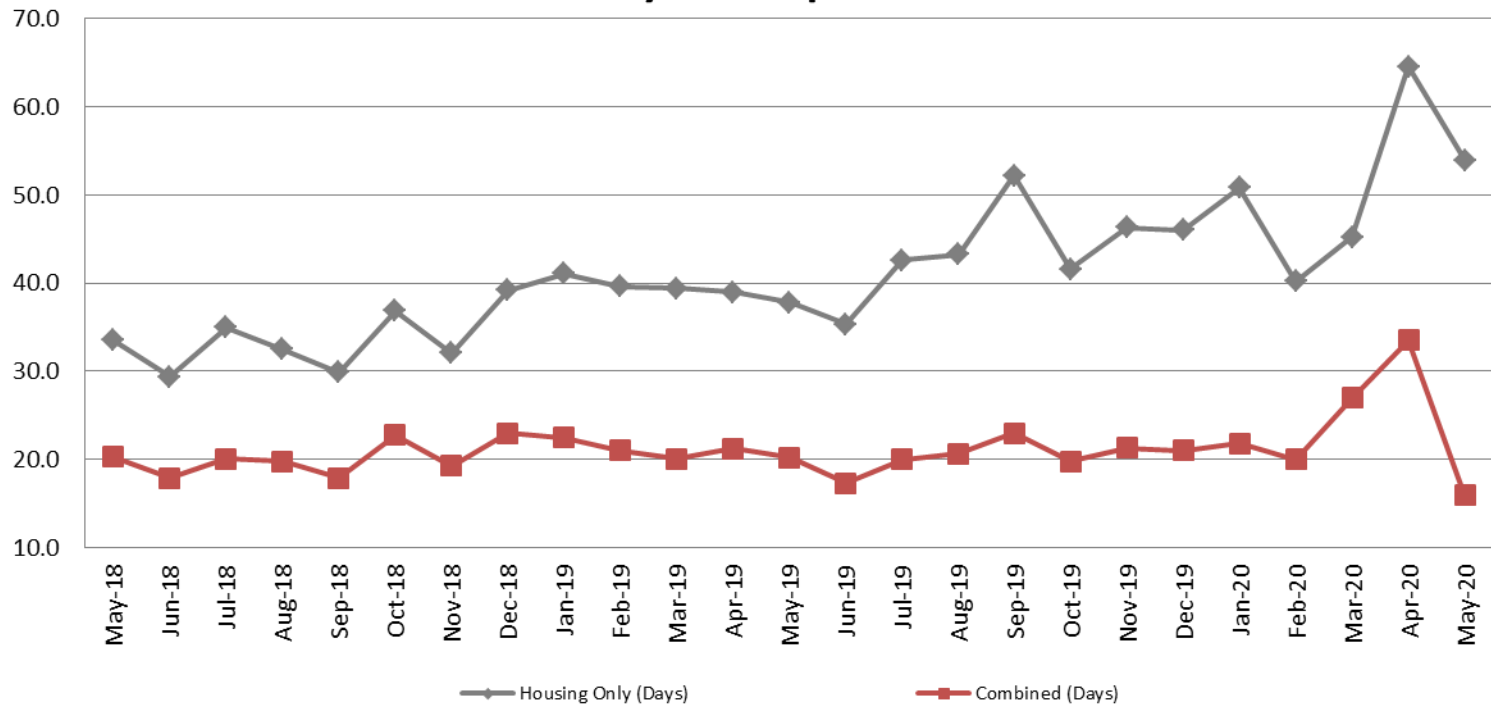
Bookings May	Housing Discharges May
2018: 2,187	2018: 2,159
2019: 2,092	2019: 2,062
2020: 1,349	2020: 1,283

Average Length of Stay: Booking (Hours) May 2018 - present



May	May YTD Average
2018: 10.5	2018: 9.2
2019: 13.0	2019: 12.4
2020: 7.4	2020: 12.9

Average Length of Stay: Housing & Combined (Days) May 2018 - present

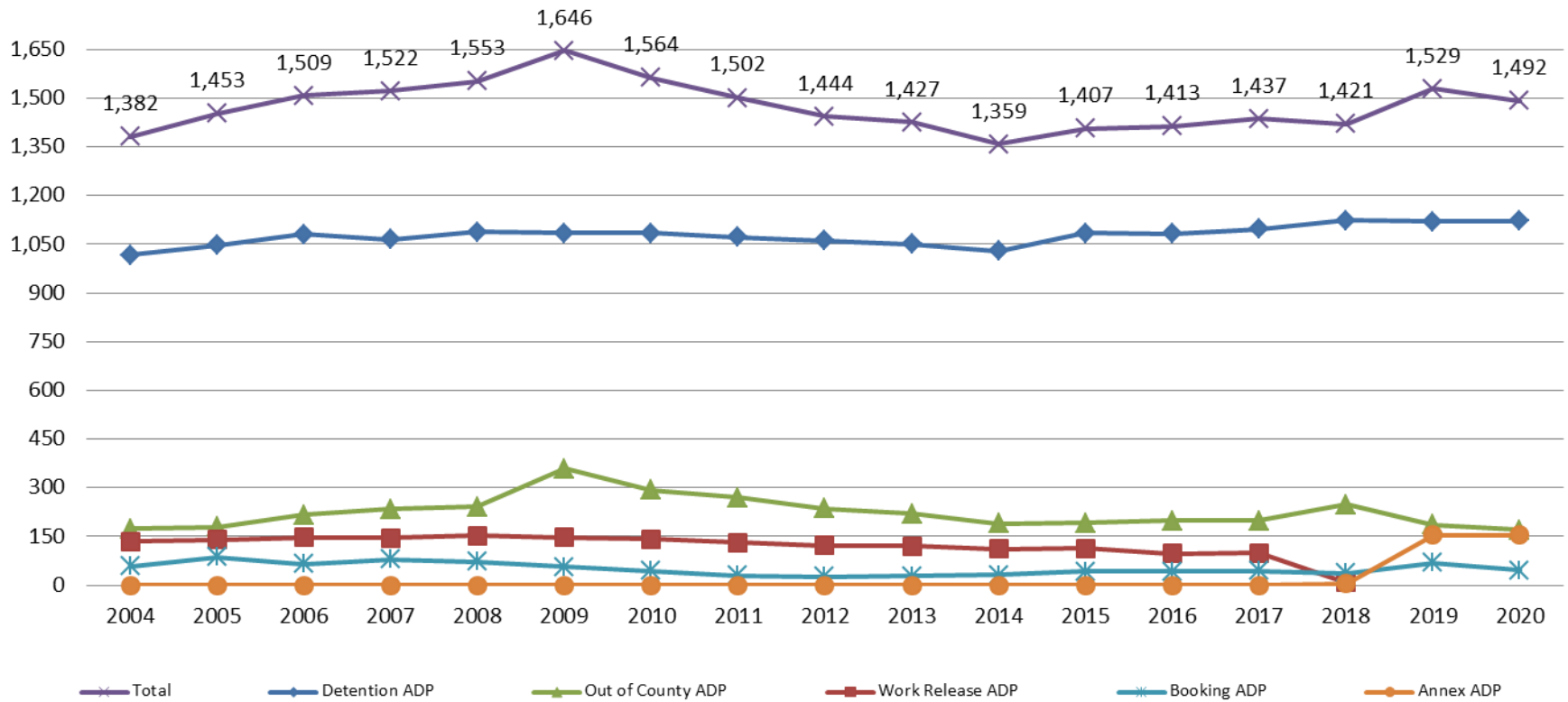


Month Year	Housing Only	Housing YTD AVG	Combined Days	Combined YTD AVG
May 2018	33.5	36.3	20.3	22.2
May 2019	37.8	39.4	20.2	21.0
May 2020	54.0	51.0	15.9	23.6

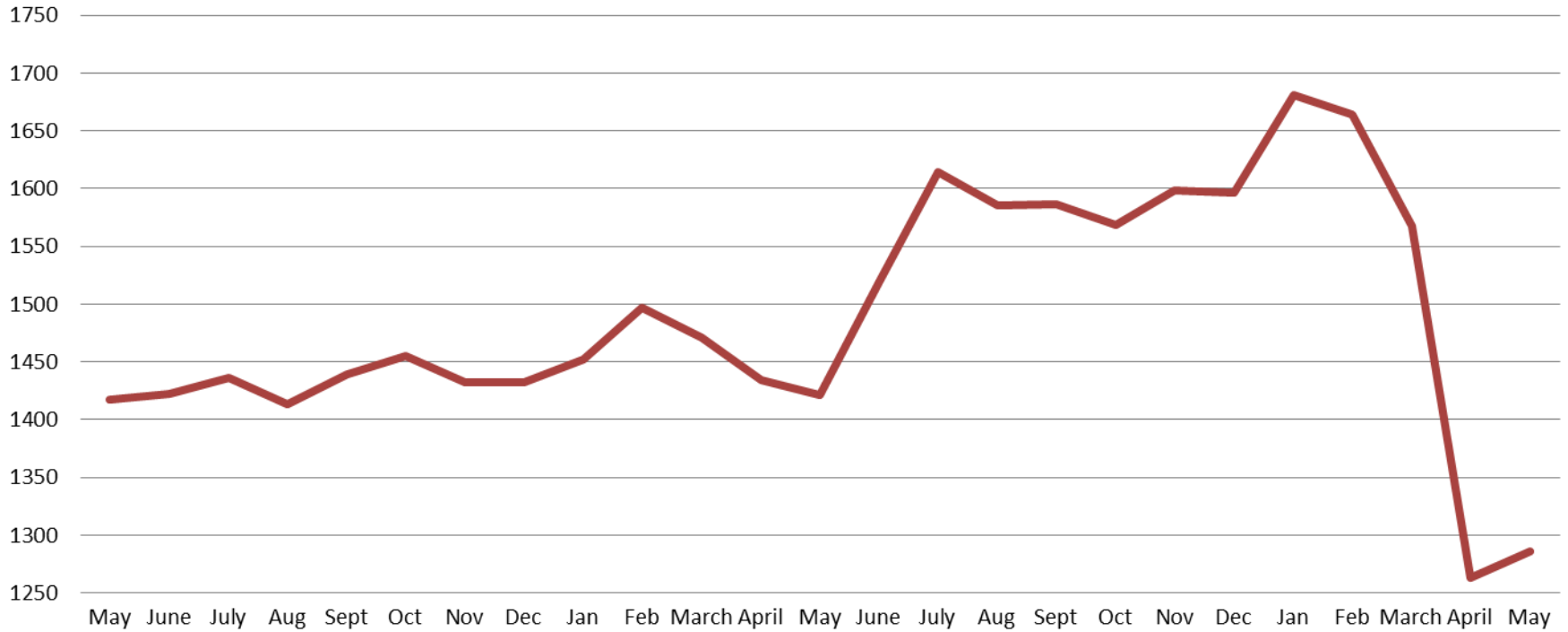


Jail: Annual Average Daily Population (ADP)

**TRENDS: Booking, Detention, Work Release, & Out of County Annual ADP:
2004 - present**

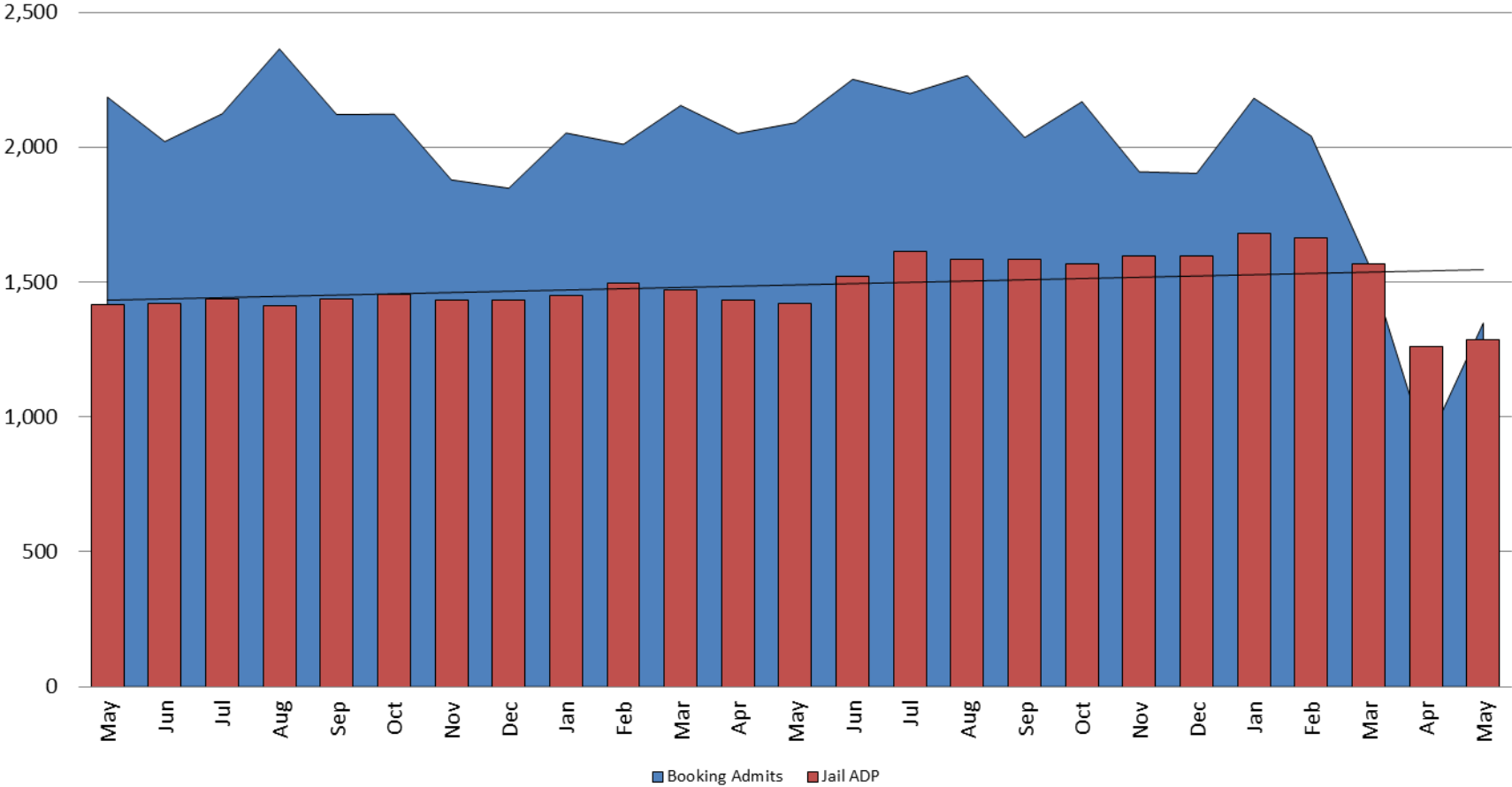


TOTAL MONTHLY ADP: JAIL (Booking, Detention Facility, Annex, & Out of County) May 2018 - present

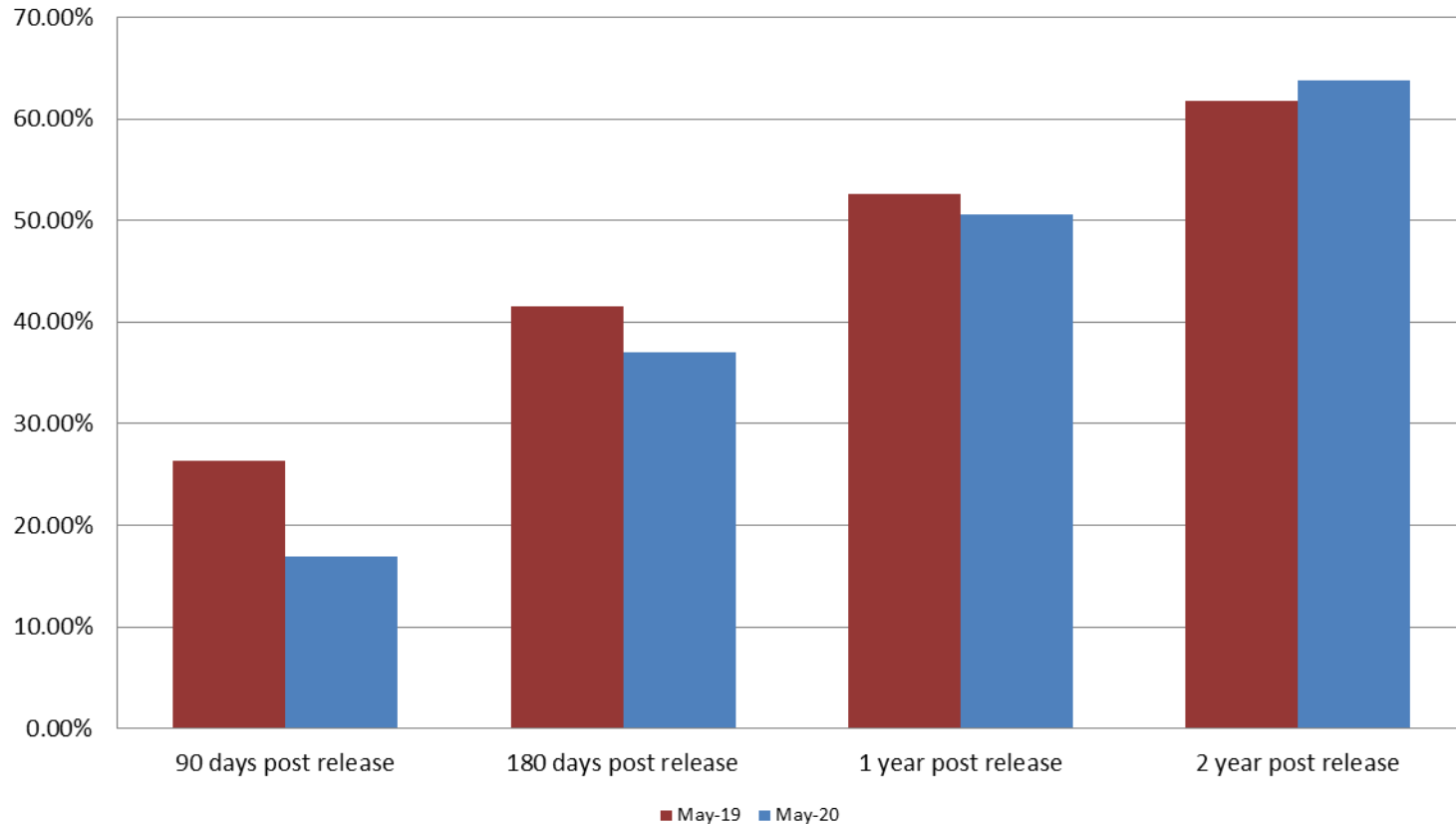


May 2018	May 2019	May 2020
1,417	1,421	1,286

Booking Admits & Total Monthly ADP (Jail): May 2018 - present



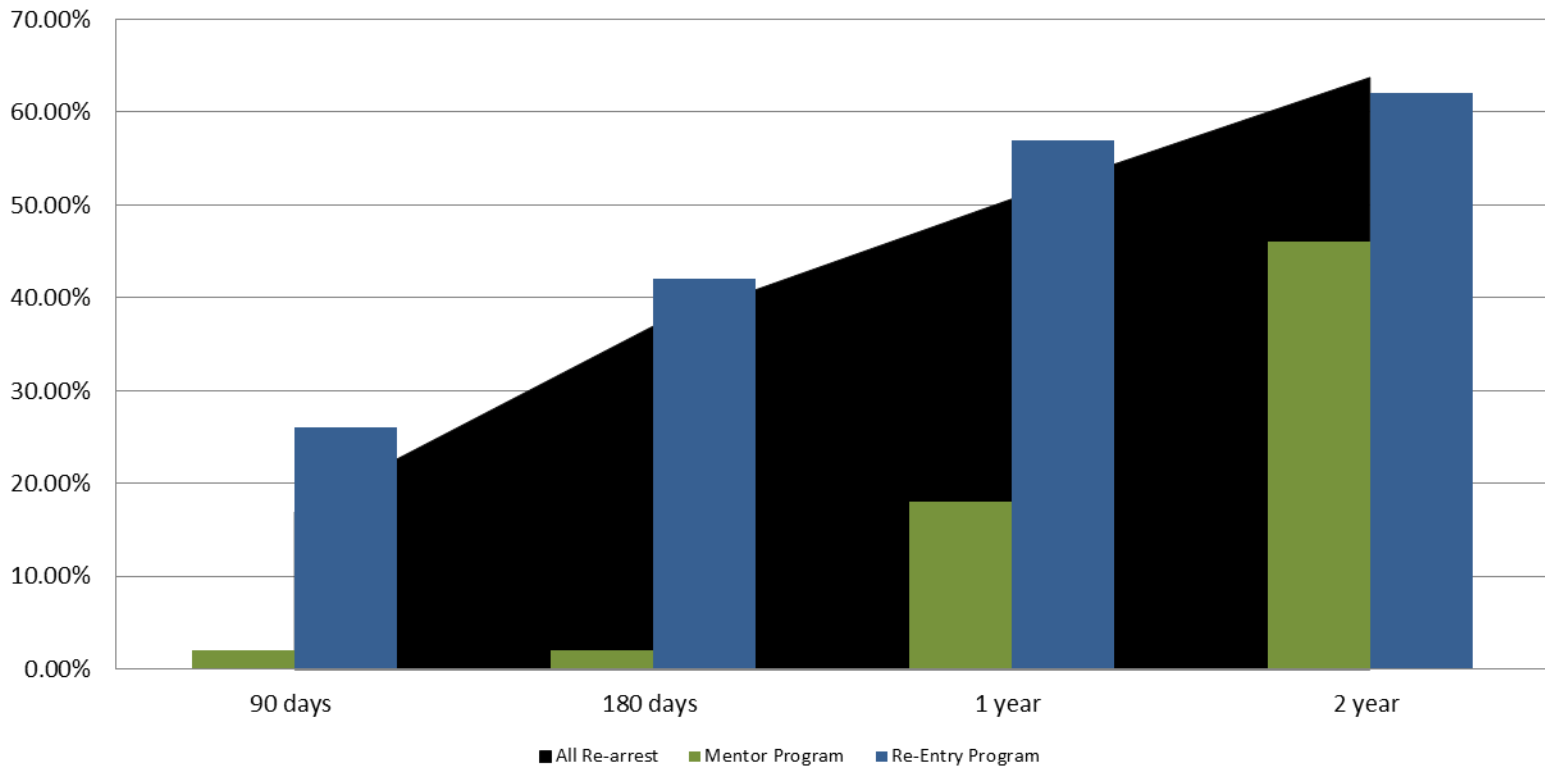
Percent of released inmates rearrested May



Month Year	90 Days	180 Days	1 Year	2 Years
May 2019	26.38%	41.57%	52.62%	61.82%
May 2020	16.93%	36.96%	50.65%	63.74%

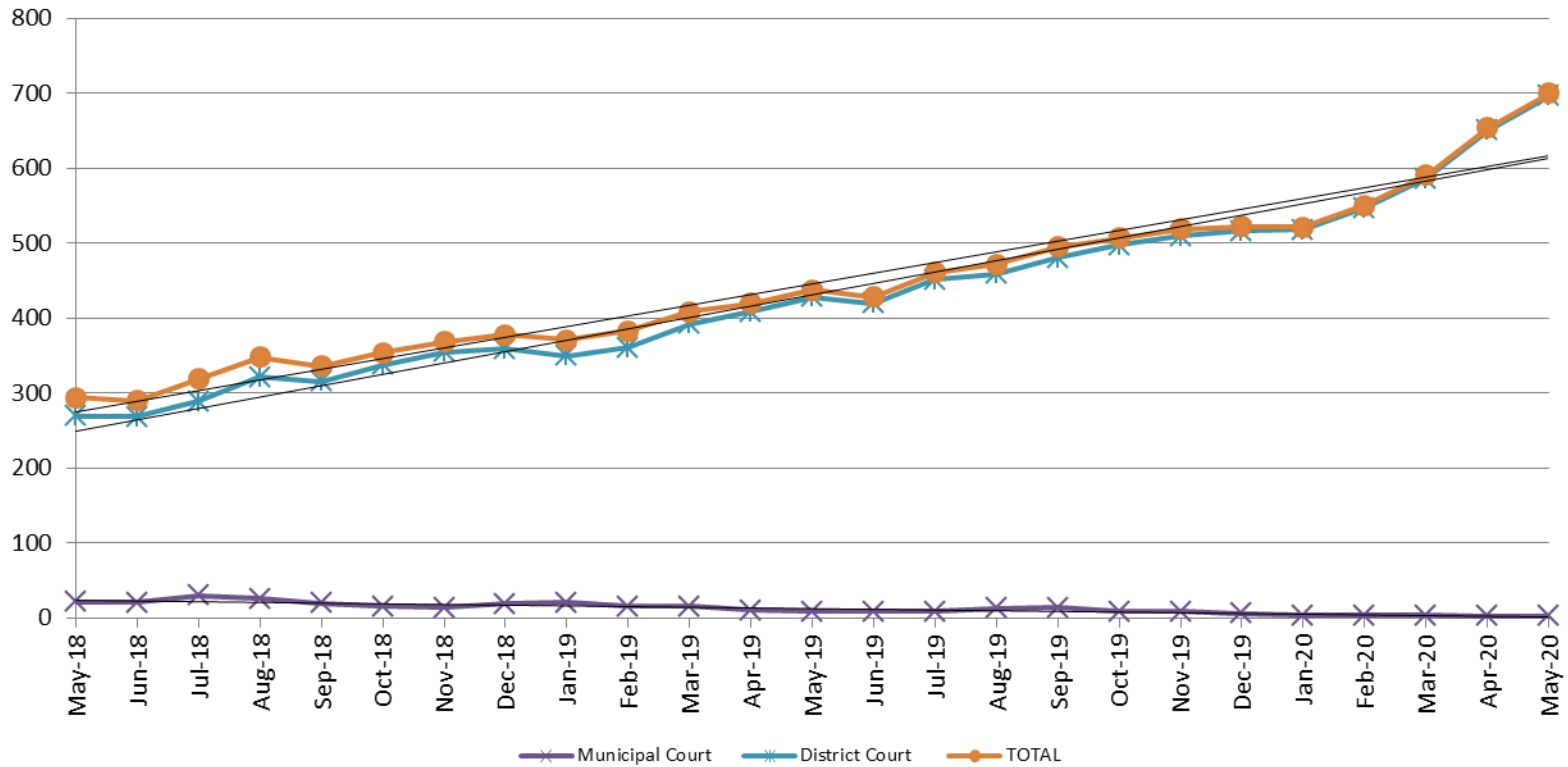


Recidivism by Programs May 2020



May 2020	90 Days	180 Days	1 year	2 years
All Re-arrests	16.93%	36.96%	50.65%	63.74%
Mentor Program	2%	2%	18%	46%
Re-Entry Program	26%	42%	57%	62%

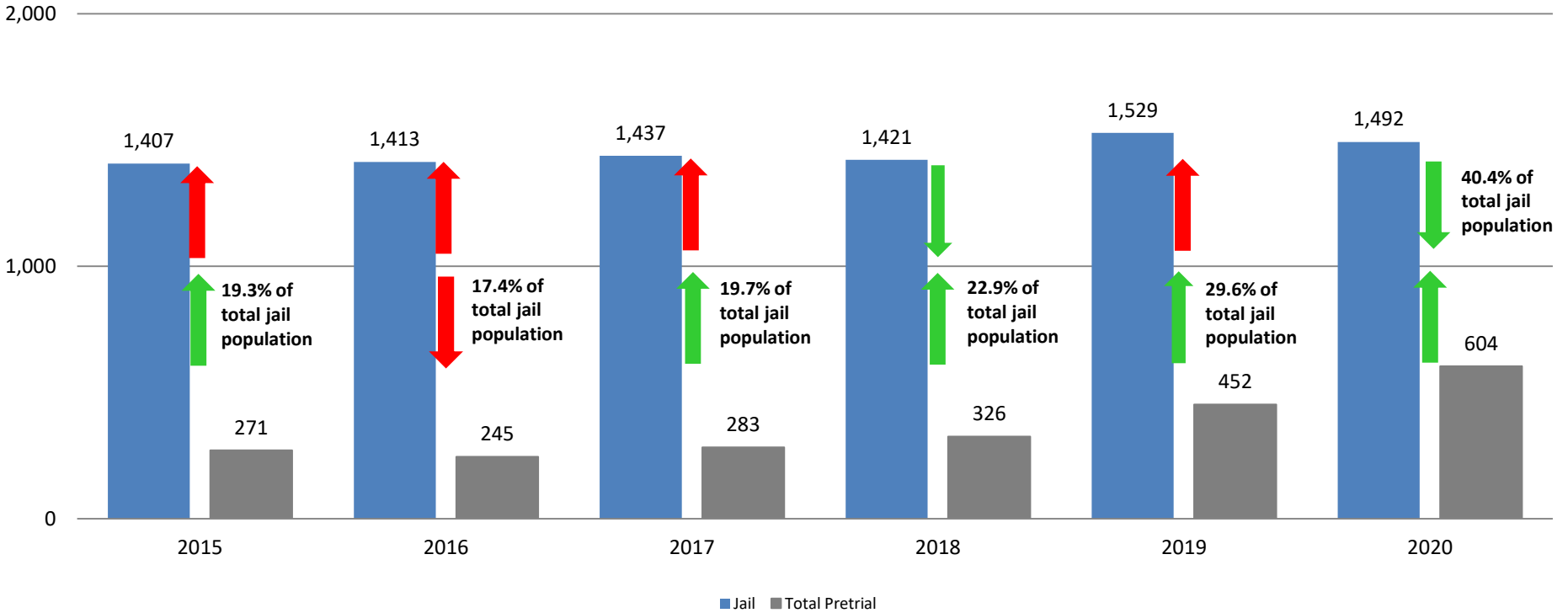
Pretrial Services Program (PSP) Monthly ADP: May 2018 - present



May	2018 ADP	2019 ADP	2020 ADP	2018 YTD Avg.	2019 YTD Avg.	2020 YTD Avg.
Muni. Court	22	9	3	29	15	4
Dist. Court	270	429	697	273	388	600
Total	294	438	700	302	404	604

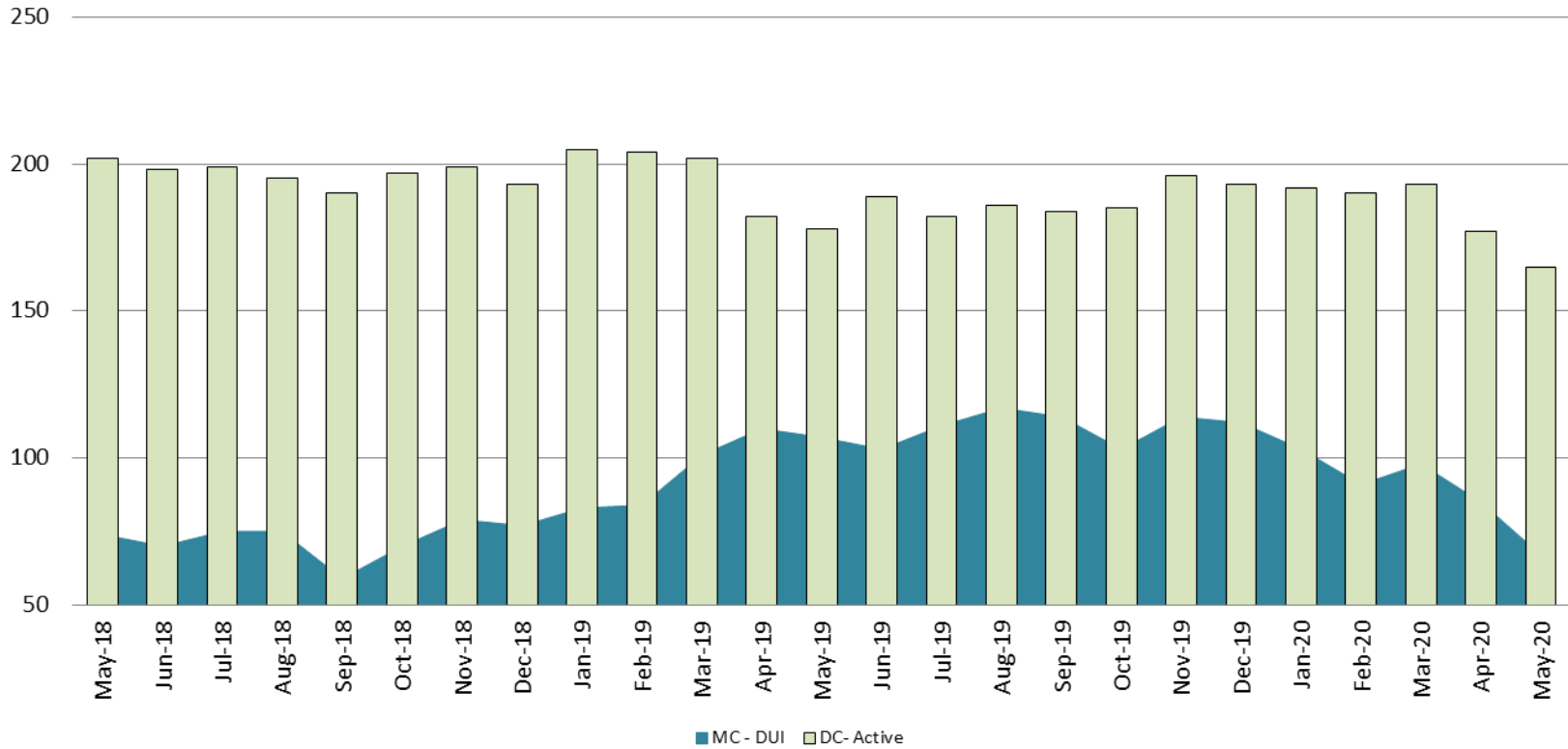
Correlation: Total & PSP

Total Annual ADP: 2015 - present



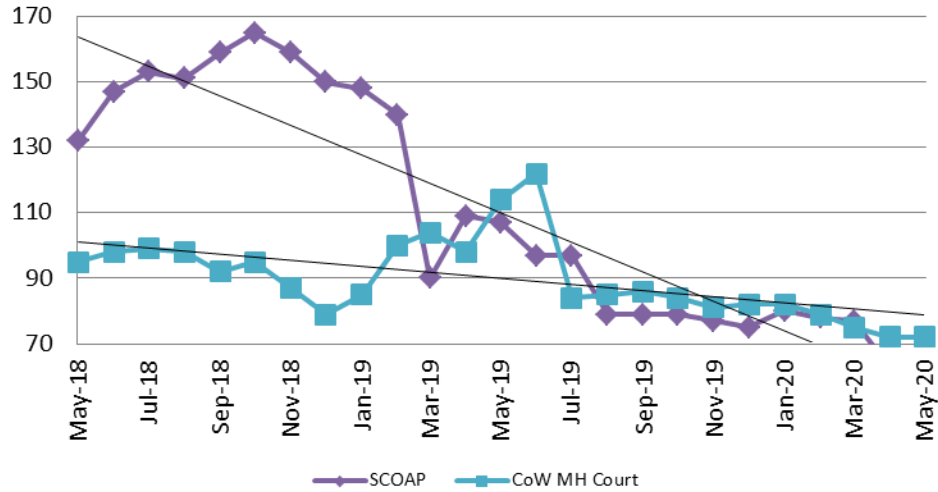
Diversion - Active Caseload

May 2018 - present

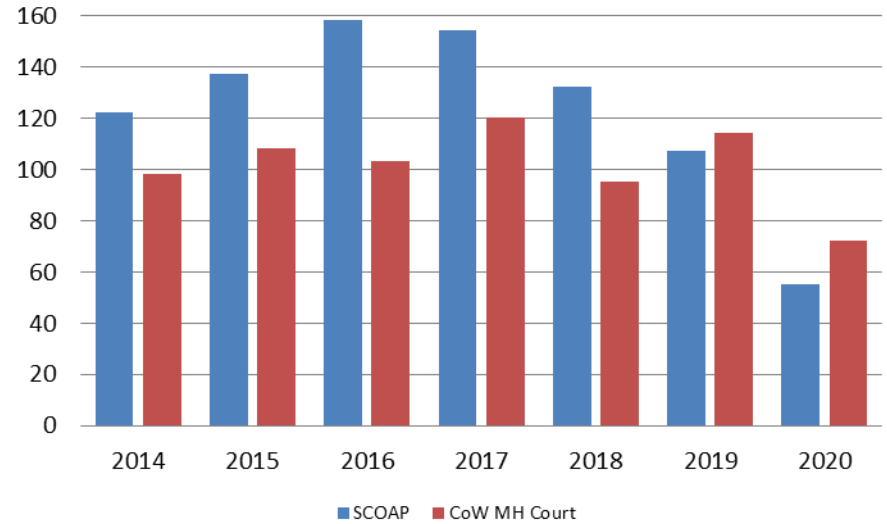


May	2018	2019	2020	2018 YTD Avg.	2019 YTD Avg.	2020 YTD Avg.
Muni. Court- DUI	74	107	67	77	97	89
Dist. Court- Active	202	178	165	200	194	183

Mental Health - ADP May 2018 - present

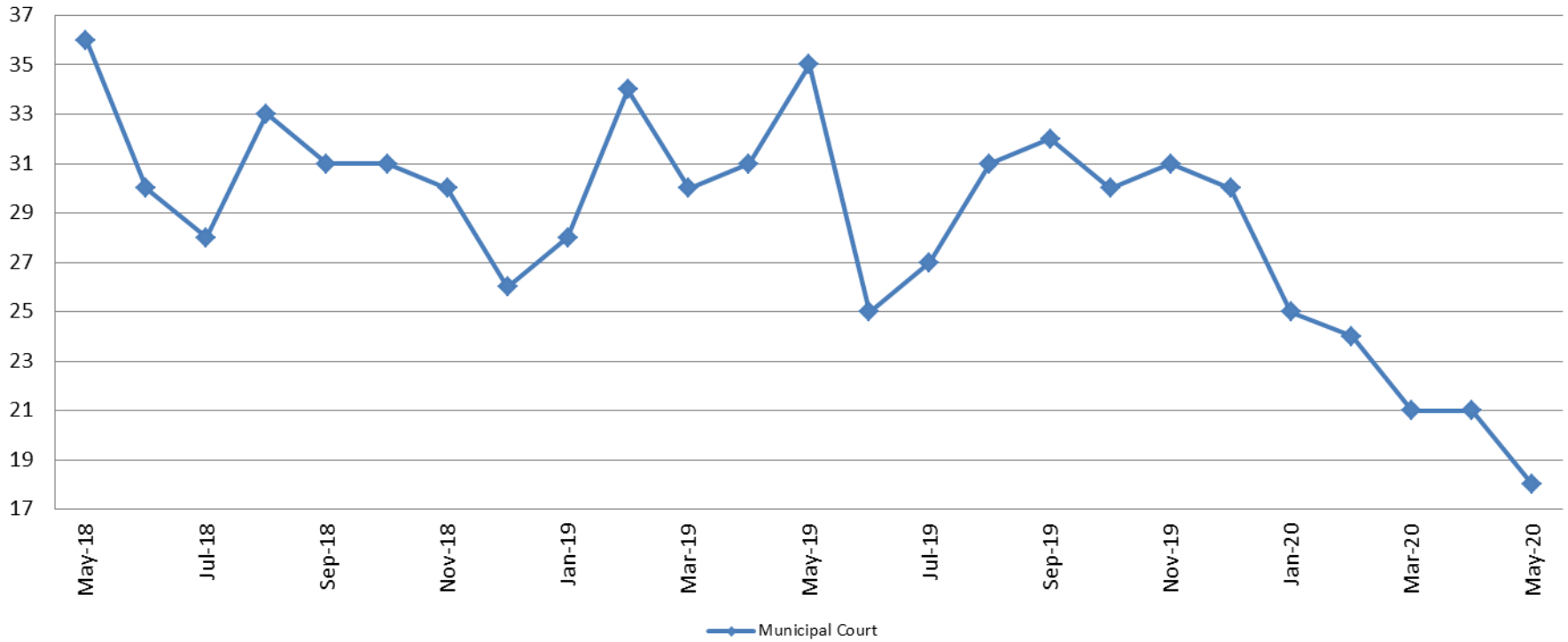


Mental Health ADP Year over Year - May



May	2018 ADP	2019 ADP	2020 ADP	2018 YTD Avg.	2019 YTD Avg.	2020 YTD Avg.
SCOAP	132	107	55	136	119	71
MH Court	95	114	72	100	100	76

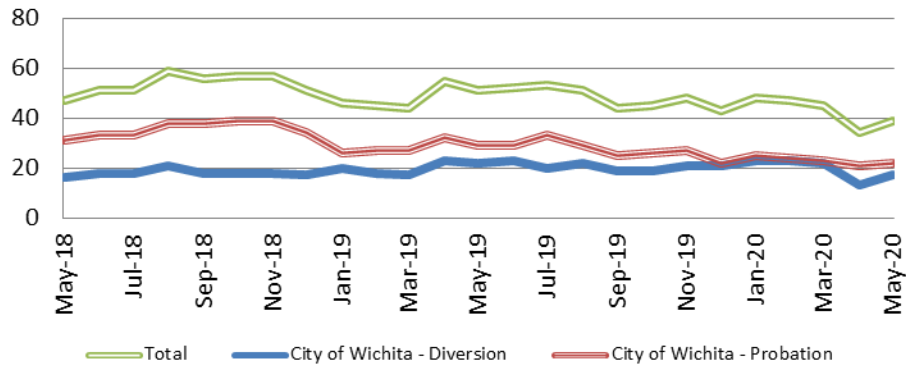
Day Reporting - Active Caseload May 2018 - present



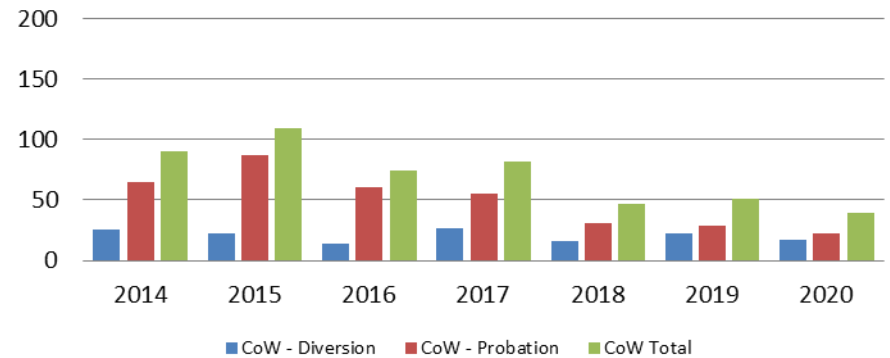
May	2015	2016	2017	2018	2019	2020
Muni. Court	79	48	31	36	35	18
Muni. Court YTD Avg.	72	48	33	38	32	22



Drug Court - City of Wichita ADP: May 2018 - present



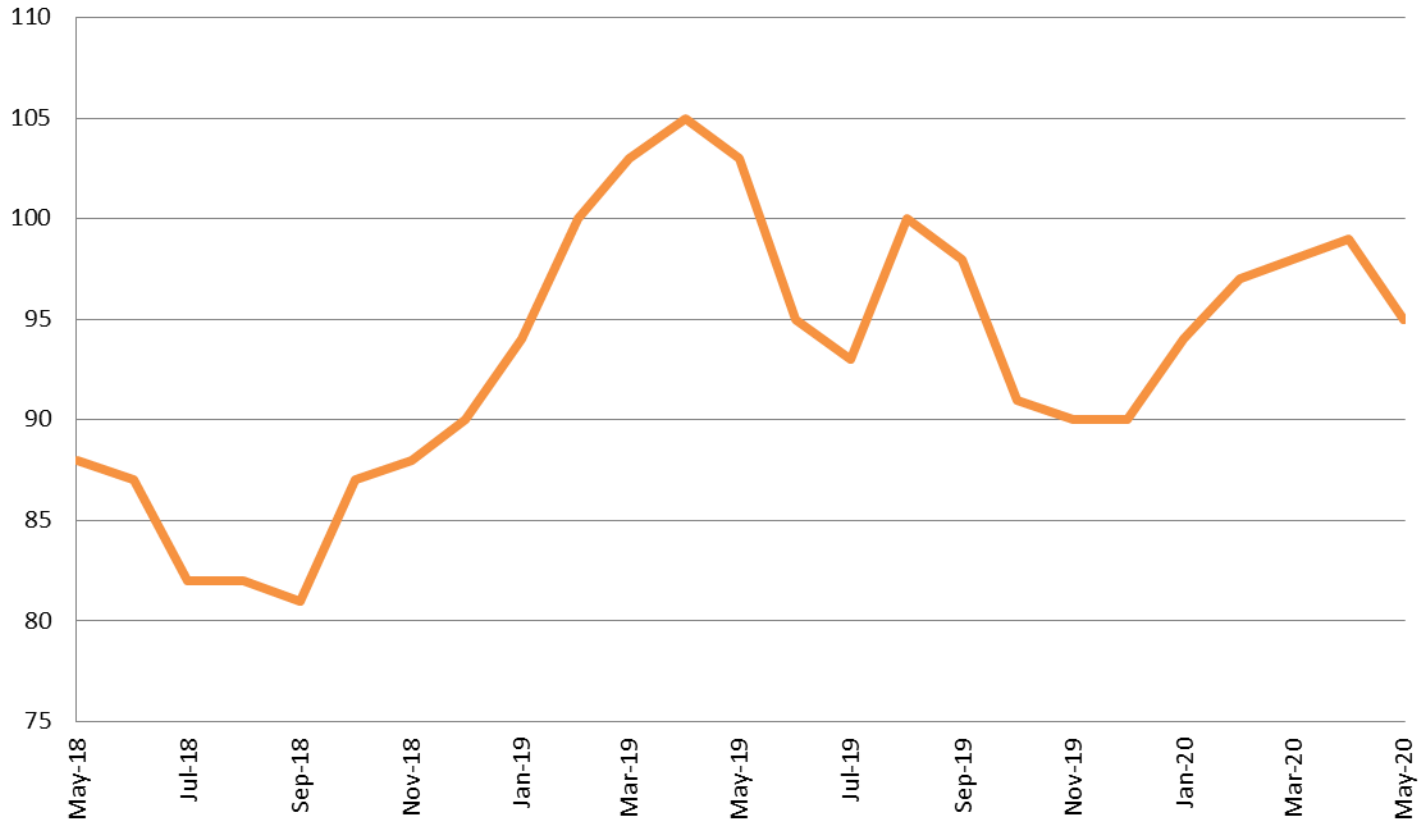
Drug Court- City of Wichita Year over Year - May



May	2018	2019	2020
Diversion	16	22	17
Probation	31	29	22
Total	47	51	39



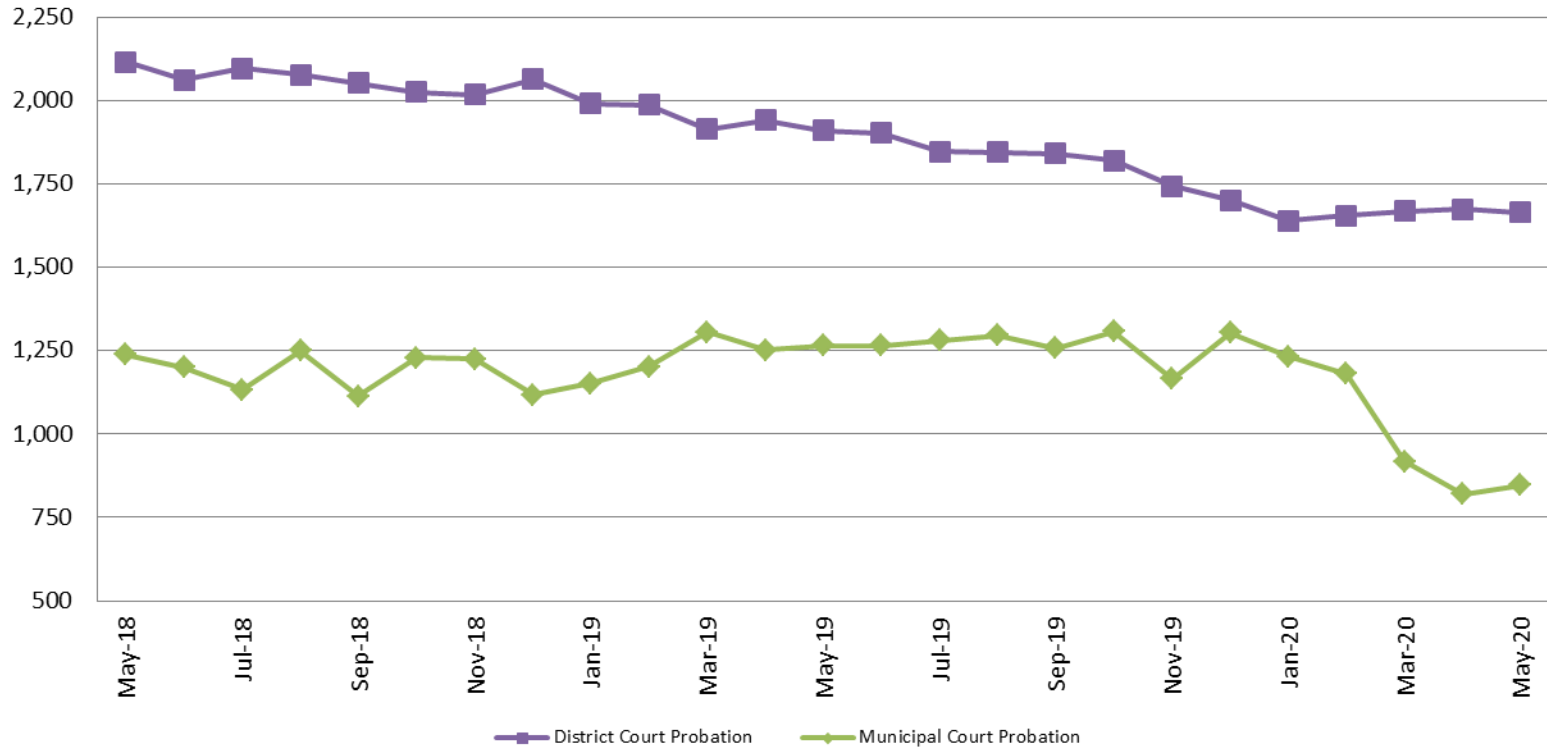
Drug Court - Sedgwick County ADP: May 2018 - present



	May	2018	2019	2020
Sedg. Co. ADP		88	103	95
YTD Avg.		85	101	97



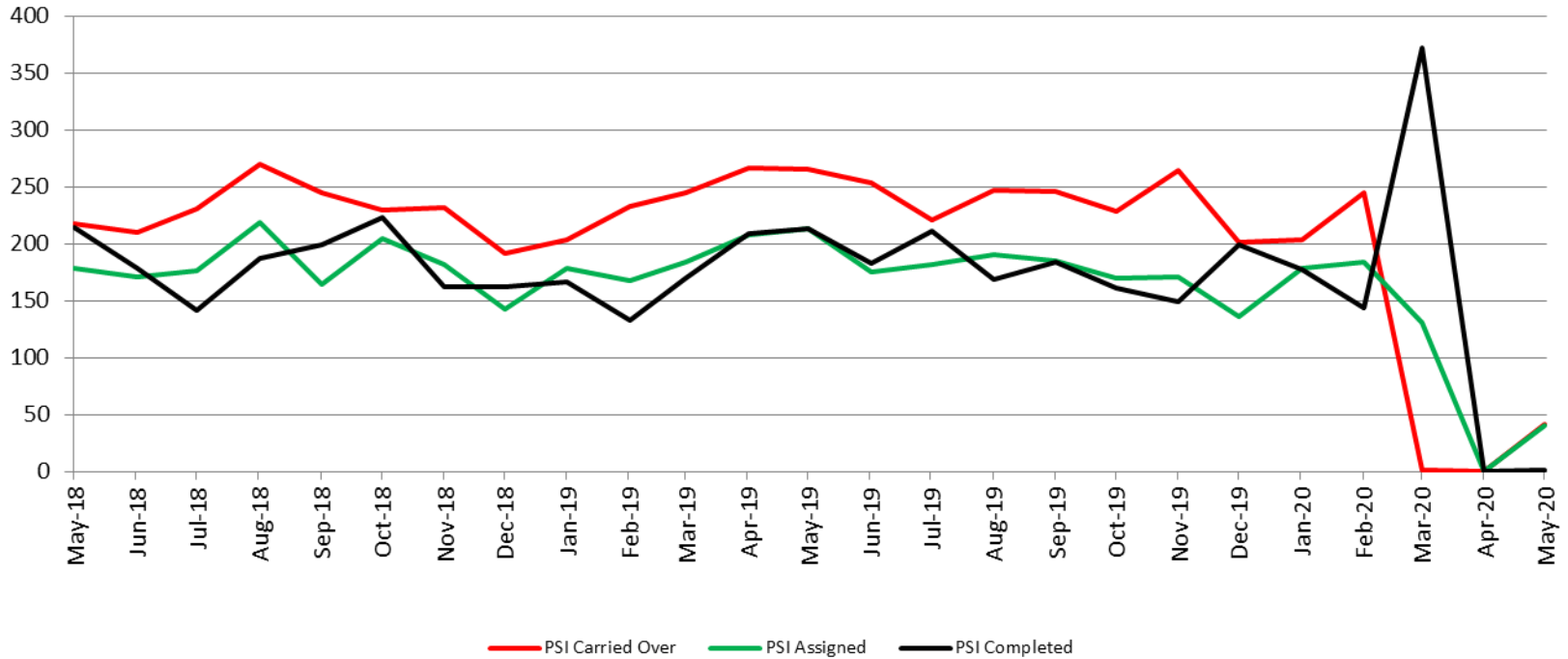
Probation - Active Caseloads May 2018 - present



May	2018	2019	2020	2018 YTD Avg.	2019 YTD Avg.	2020 YTD Avg.
Dist. Court Probation	2,117	1,911	1,664	2,145	1,949	1,660
Muni. Court Probation	1,239	1,265	846	1,242	1,235	999



District Court Probation: Pre-Sentence Investigation May 2018 - present

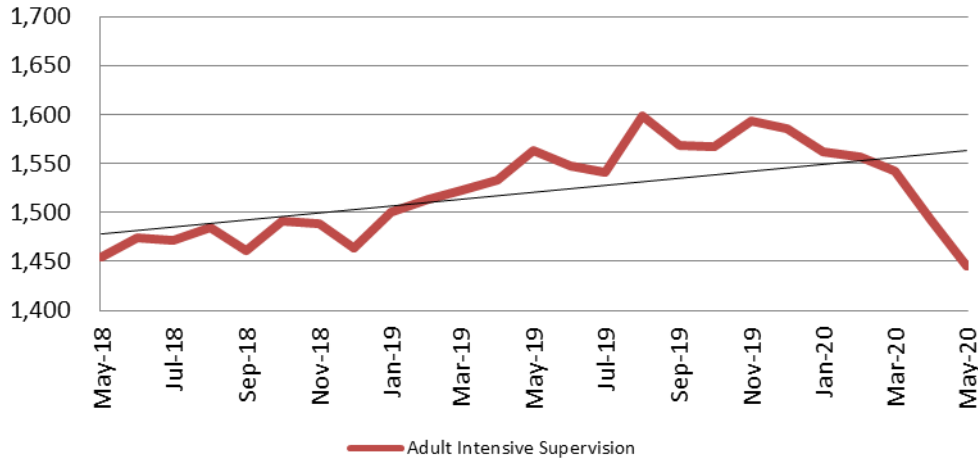


May	2018	2019	2020
Carried Over	218	266	41
Assigned	178	213	40
Completed	214	213	1



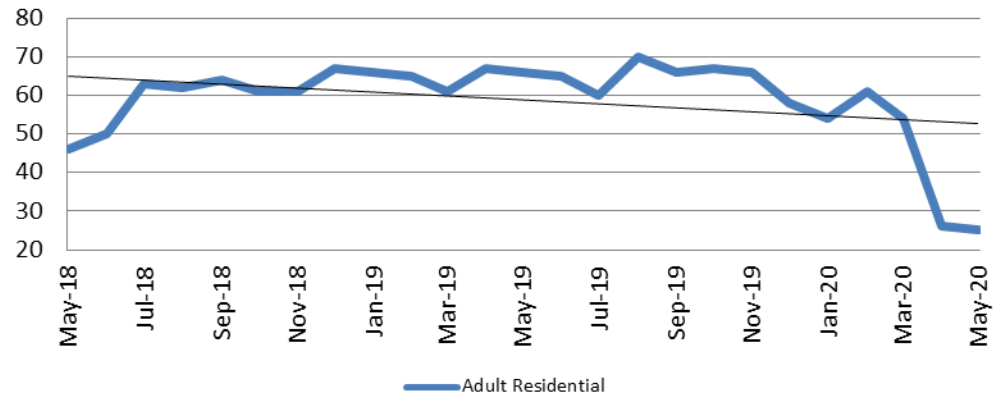
Community Corrections

**Adult Intensive Supervision Probation (AISP):
ADP May 2018- present**



Year	May	May YTD Avg.
2018	1,454	1,467
2019	1,563	1,526
2020	1,446	1,520

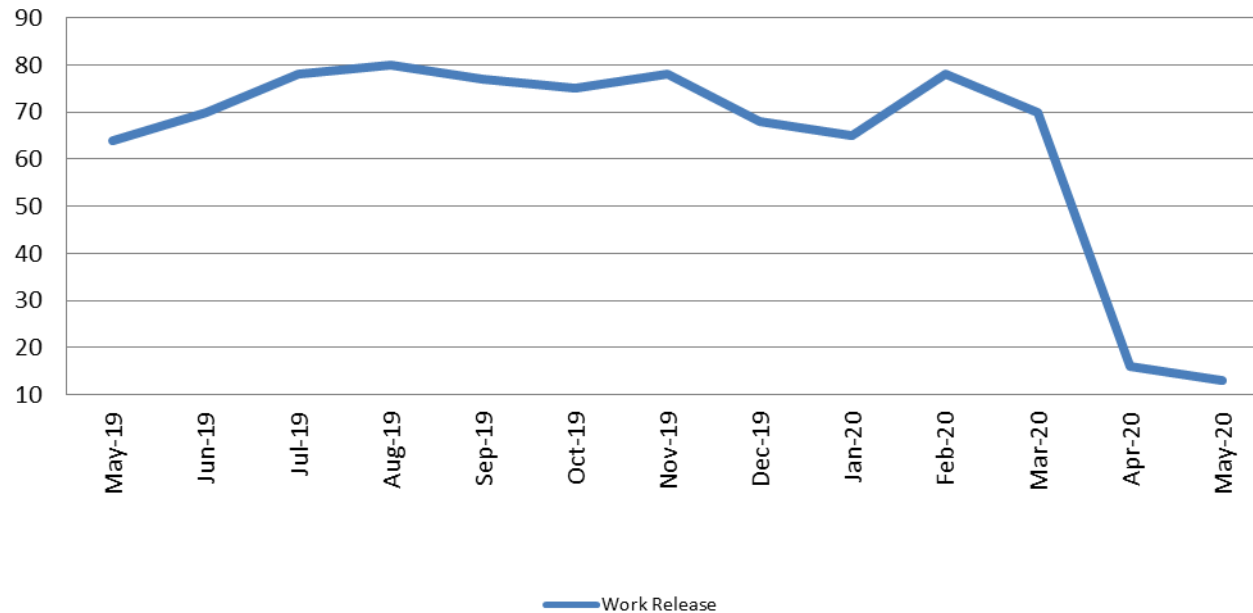
**Adult Residential: ADP
May 2018 - present**



Year	May	May YTD Avg.
2018	46	56
2019	66	65
2020	25	44

Community Corrections

**Work Release: ADP
May 2019 - present**

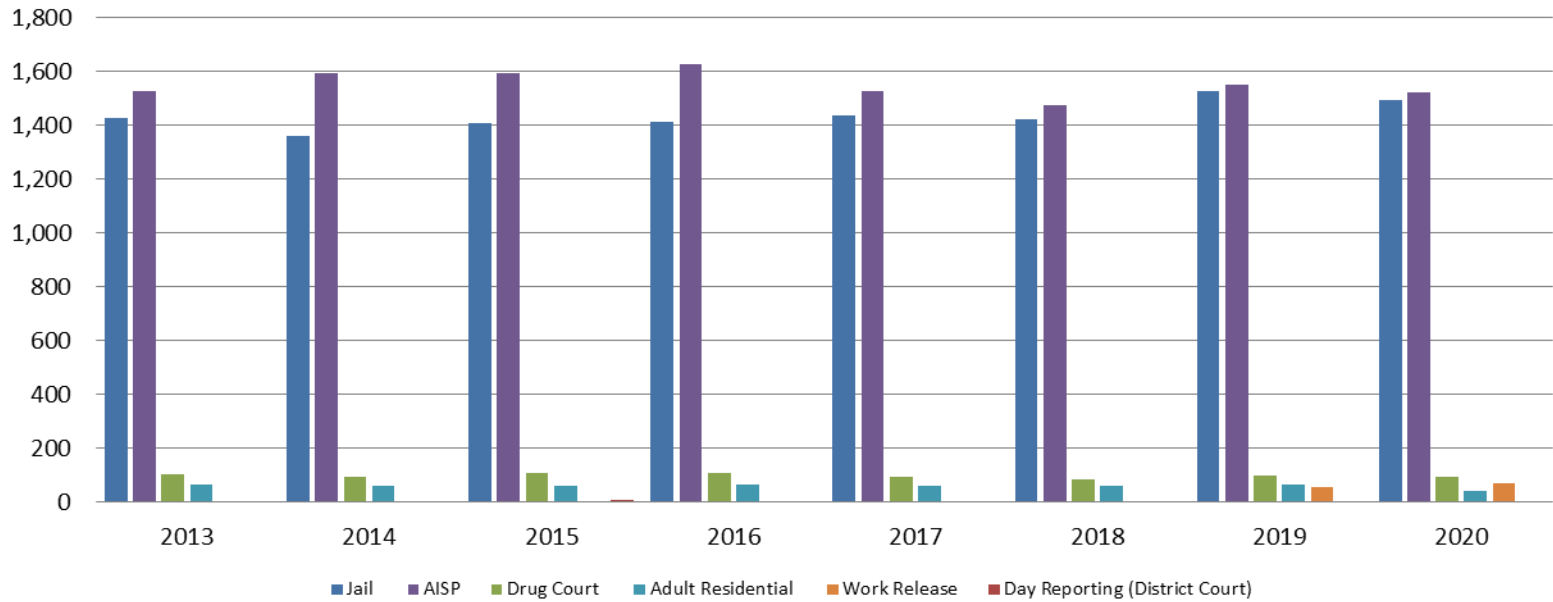


Month Year	Total	YTD Avg.
May 2019	64	65
May 2020	13	48



Correlation: Total & Sedgwick County Programs (Adult)

Total Annual ADP 2013 - present

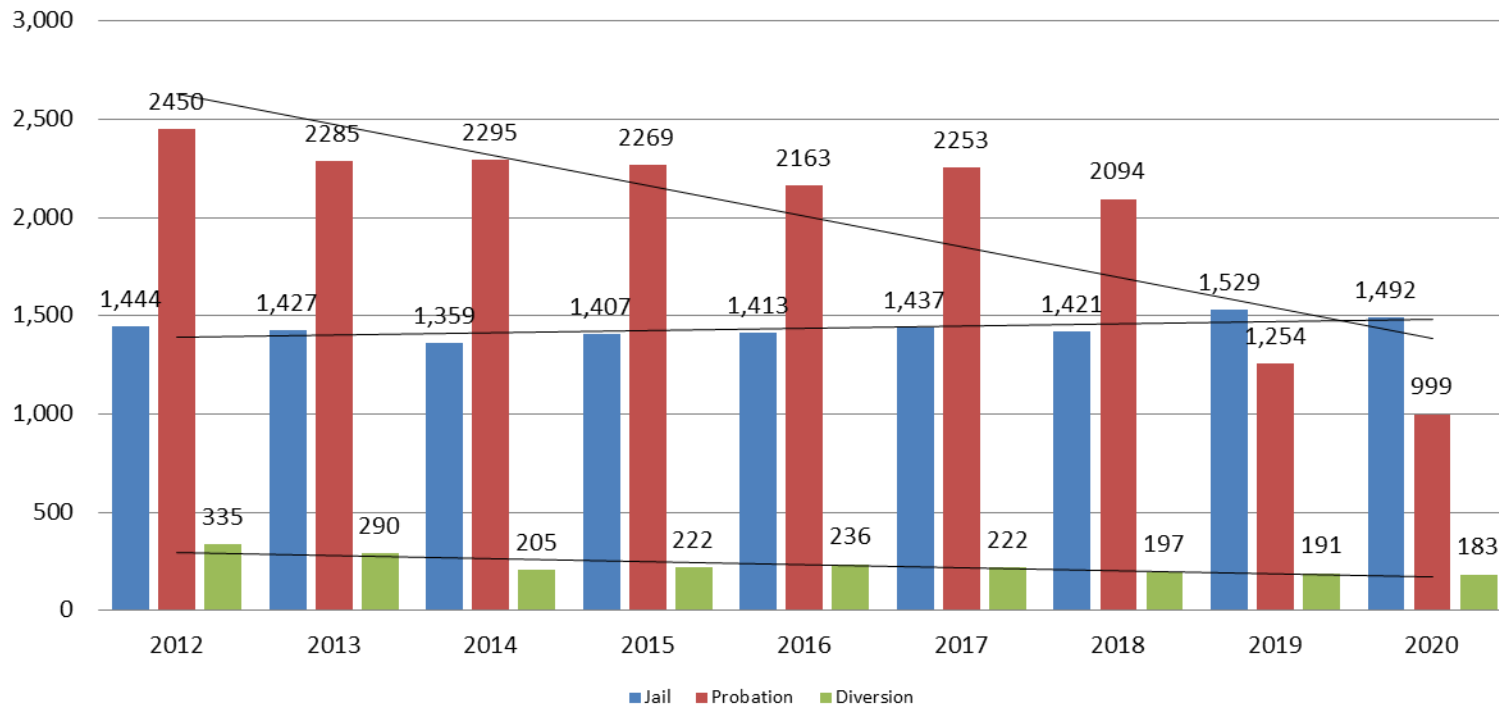


	2018	2019	2020
Jail	1,421	1,529	1,492
AISP	1,472	1,553	1,520
Drug Court	85	97	97
Adult Residential	59	65	44
Work Release	55	71	48
Day Reporting (DC)	0	0	0



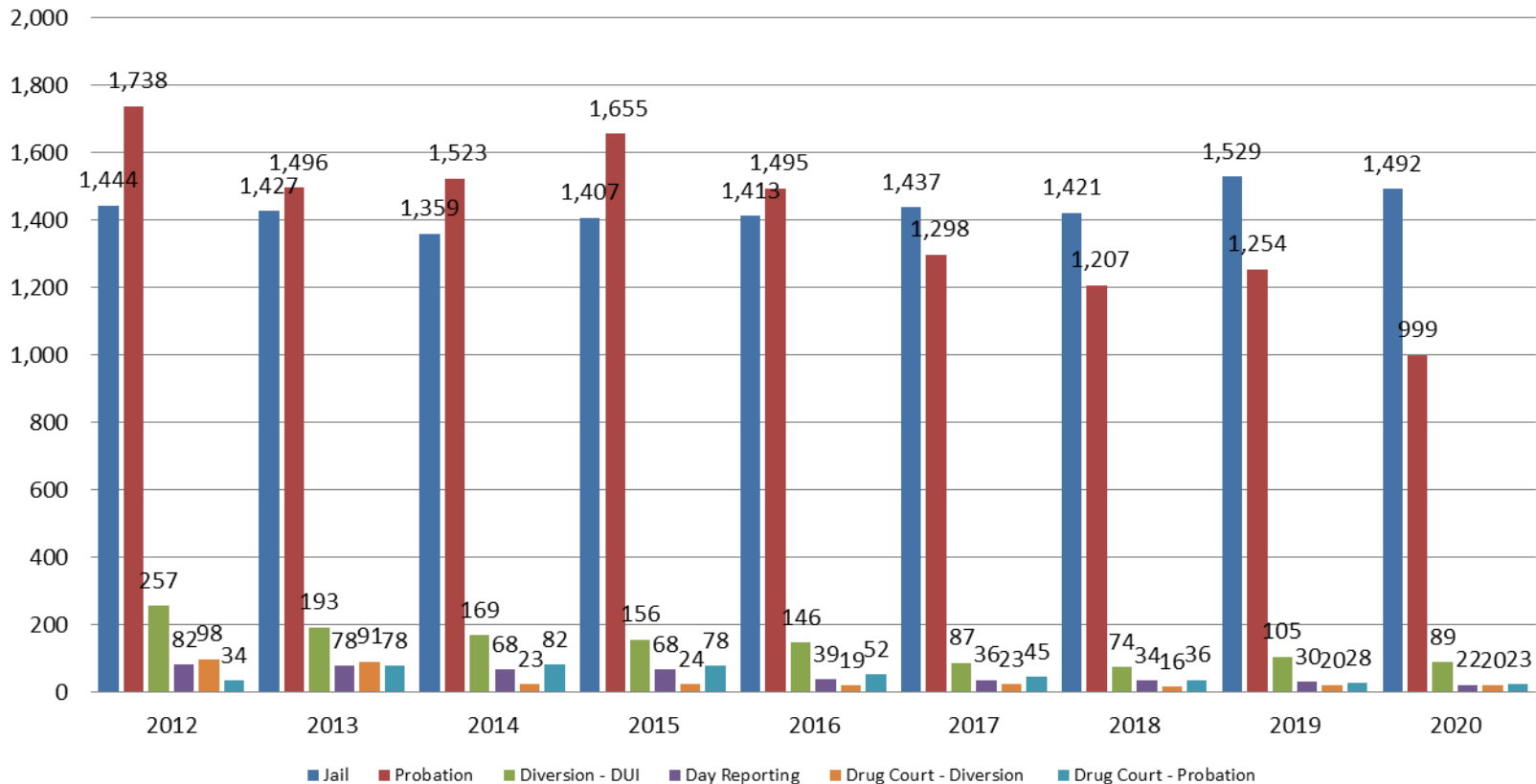
Correlation: Total & District Court Programs

Total Annual ADP: 2012 - present

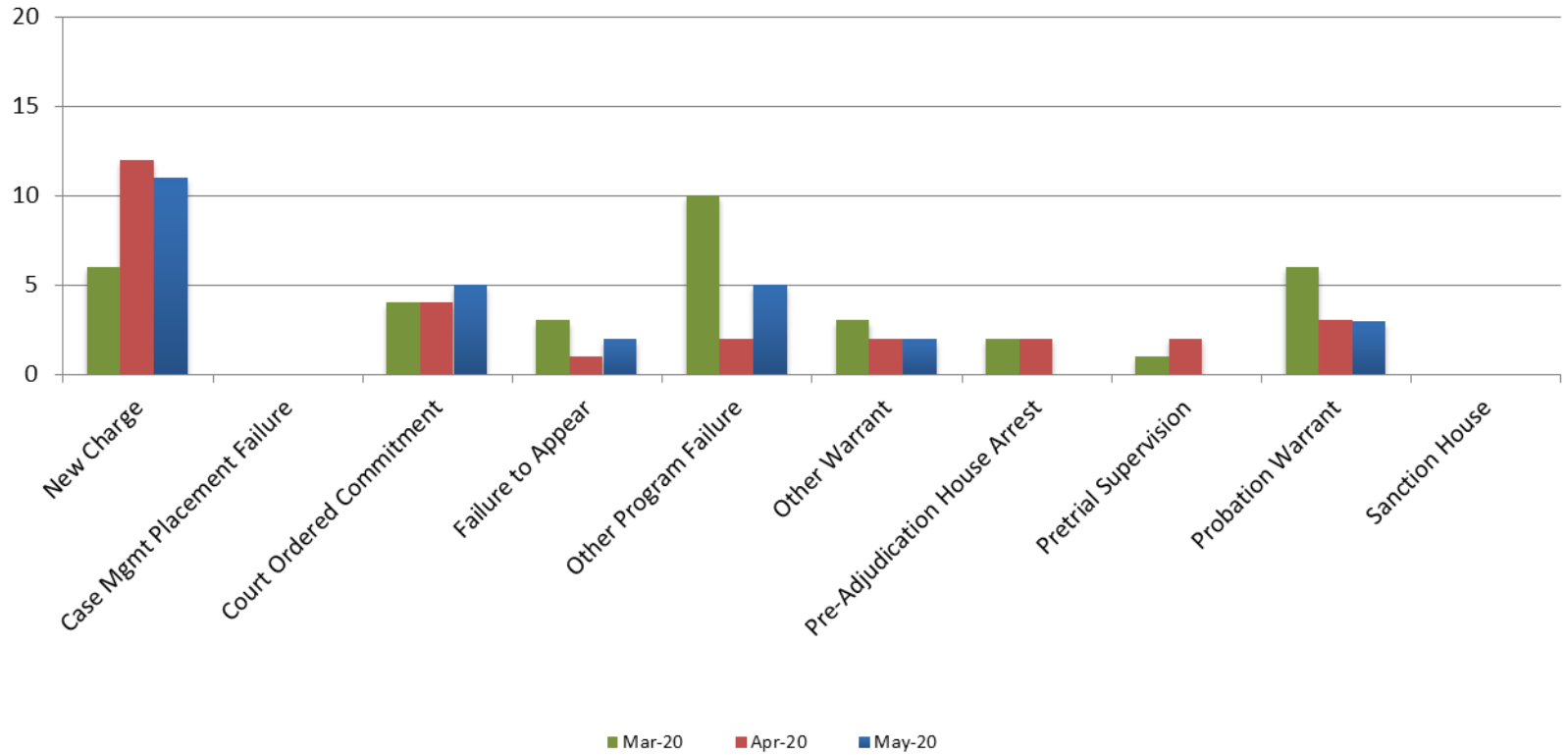


Correlation: Total & City of Wichita / Municipal Court Programs

Total Annual ADP: 2012 - present



Reason for JDF Admits



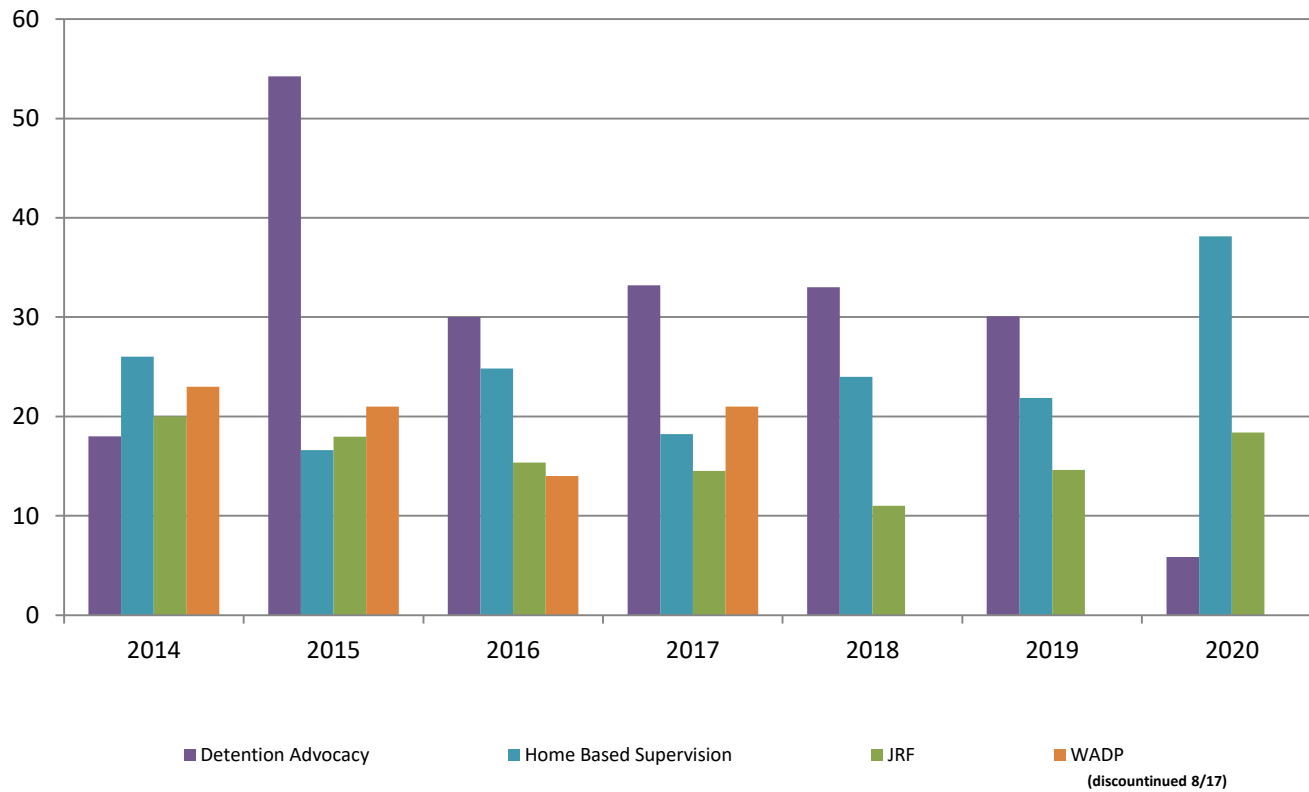
Reason for JDF Admits

Reason	May 2019	May 2020
New Charges	7	11
Case Management Placement Failures	0	0
Court Ordered Commitment	18	5
Failure to Appear	4	2
Other Program Failure	3	5
Other Warrant	1	2
Pre-Adjudication House Arrest	1	0
Pretrial Supervision	0	0
Probation Warrant	14	3
Sanction House	2	0



Juvenile Detention Alternatives

ADP: May 2014 - present



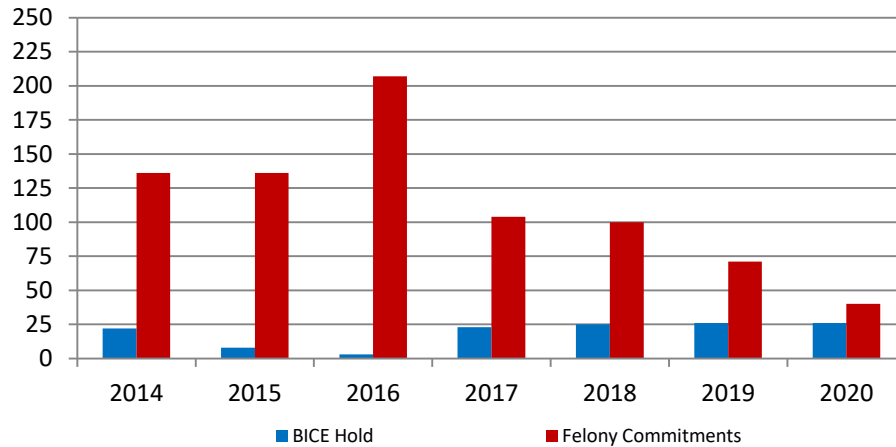
Juvenile Detention Services

May ADP	2017	2018	2019	2020
Juvenile Detention Facility	54	49	50	28
Juvenile Residential Facility	15	11	15	18
Home Based Supervision	18	24	22	38
Detention Advocacy Case Management Services	33	33	30	6
Weekend Alternative Detention Program (total)	21	0	N/A	N/A

May YTD AVERAGE	2017	2018	2019	2020
Juvenile Detention Facility	47	50	52	37
Juvenile Residential Facility	14	12	14	18
Home Based Supervision	23	27	27	24
Detention Advocacy Case Management Services	35	32	29	15
Weekend Alternative Detention Program	18	0	N/A	N/A

Monthly Jail Snapshot: May 31, 2020

Snapshots May 2014 - present

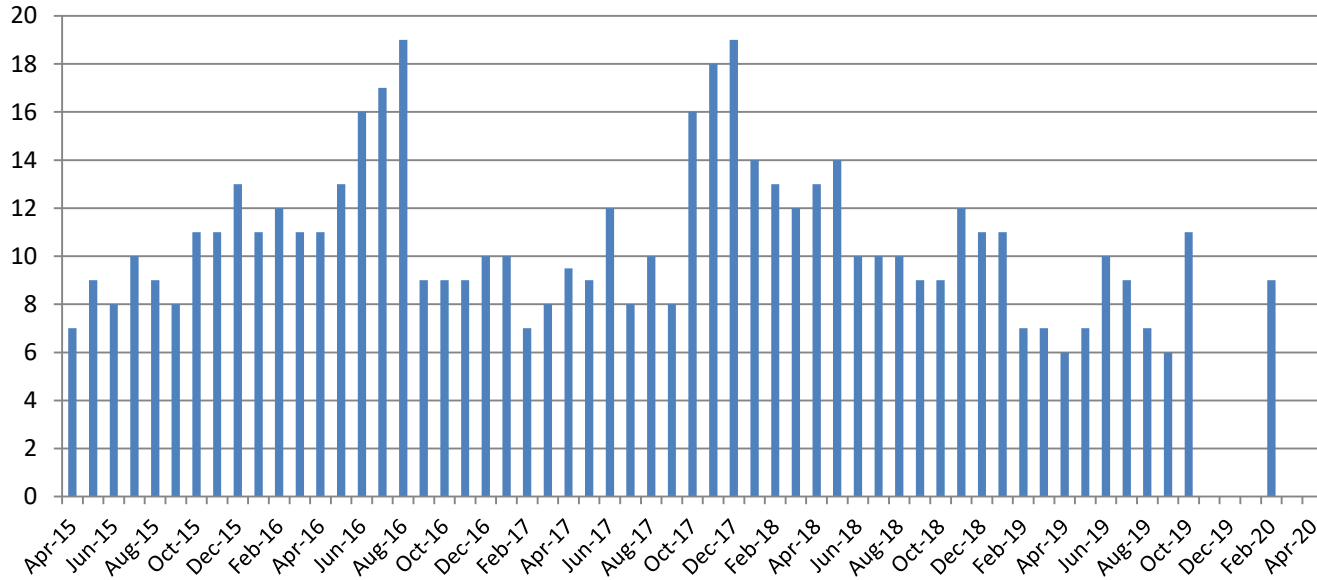


BICE Hold	2014	2015	2016	2017	2018	2019	2020
May	22	8	3	23	25	26	26

Felony Commitments	2014	2015	2016	2017	2018	2019	2020
May	136	136	207	104	100	71	40



Journal Entry Completion (Average Days) April 2015 - present



April	2015	2016	2017	2018	2019	2020
Avg. Days	7	11	9.5	13	6	ND
YTD Avg.	8	11	9	13	7.75	ND

