

Criminal Justice Coordinating Council

Population Report & Program Trends

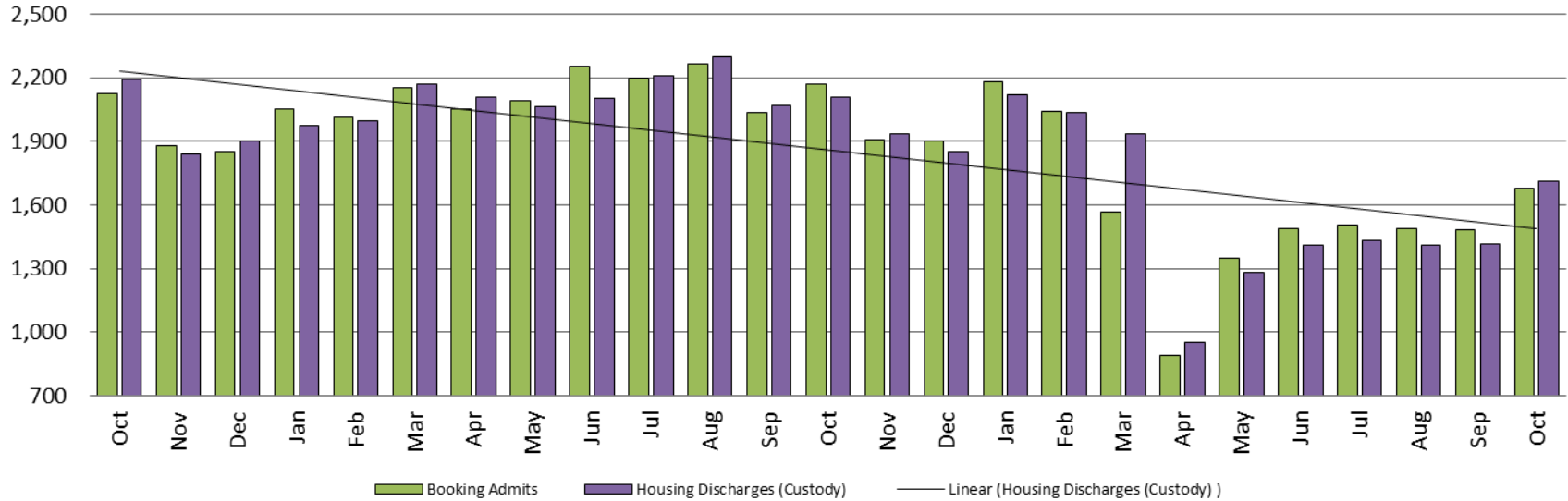
October 2020



Sedgwick County...
working for you

Detention Facility

Booking Admits & Housing Discharges from Custody October 2018 - present

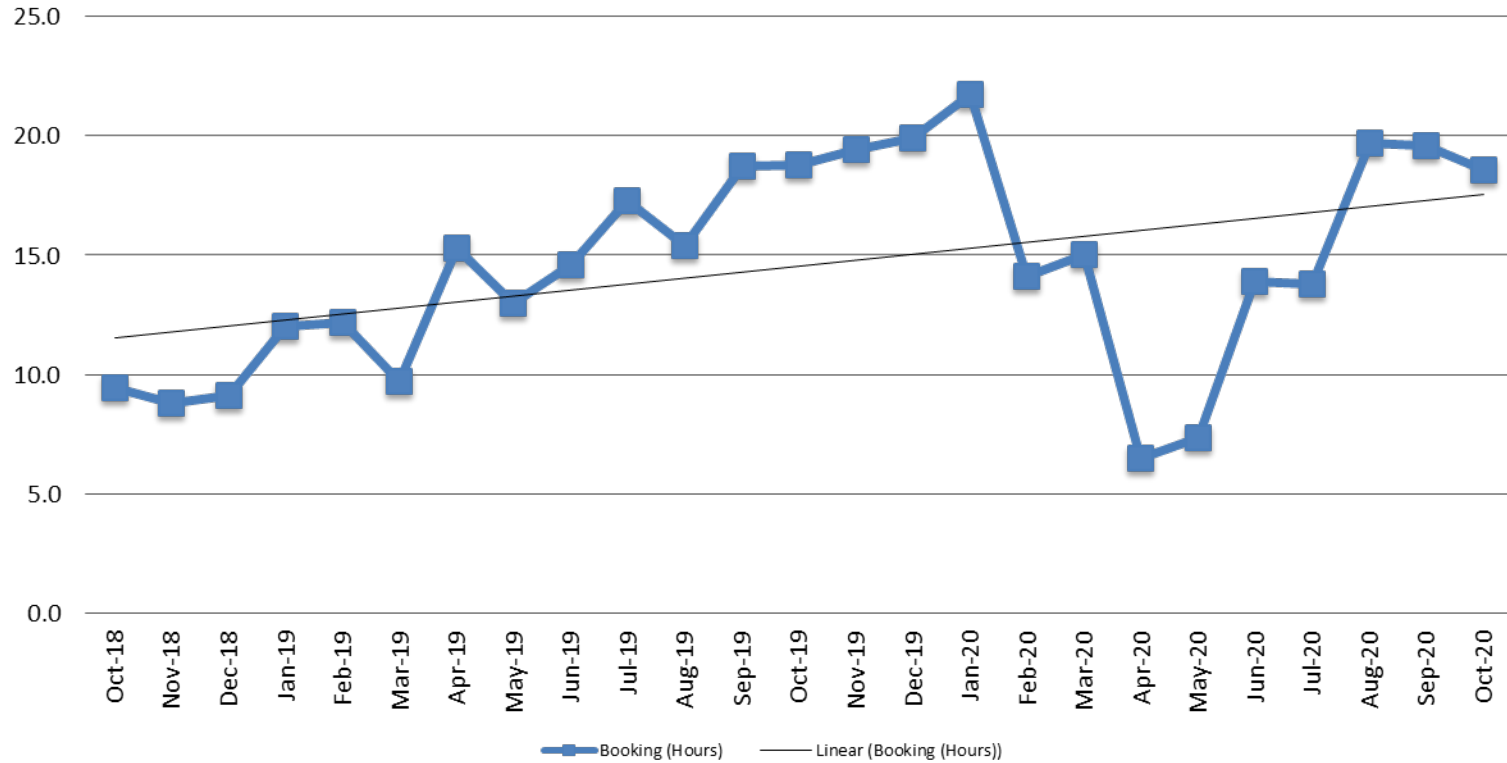


Bookings Year over Year: Month of October



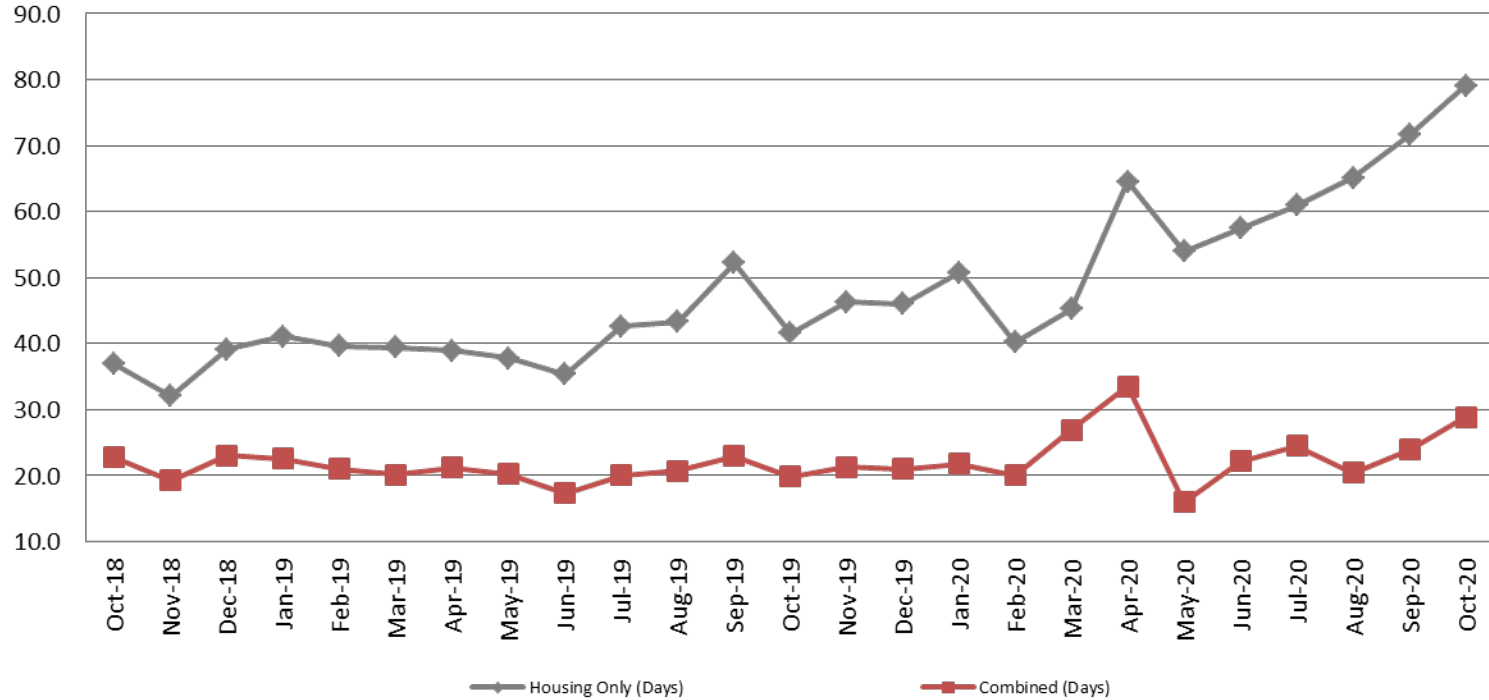
Bookings October	Housing Discharges October
2018: 2,124	2018: 2,190
2019: 2,170	2019: 2,111
2020: 1,677	2020: 1,710

Average Length of Stay: Booking (Hours) October 2018 - present



October	October YTD Average
2018: 9.5	2018: 10.6
2019: 18.8	2019: 14.7
2020: 18.6	2020: 15.0

Average Length of Stay: Housing & Combined (Days) October 2018 - present

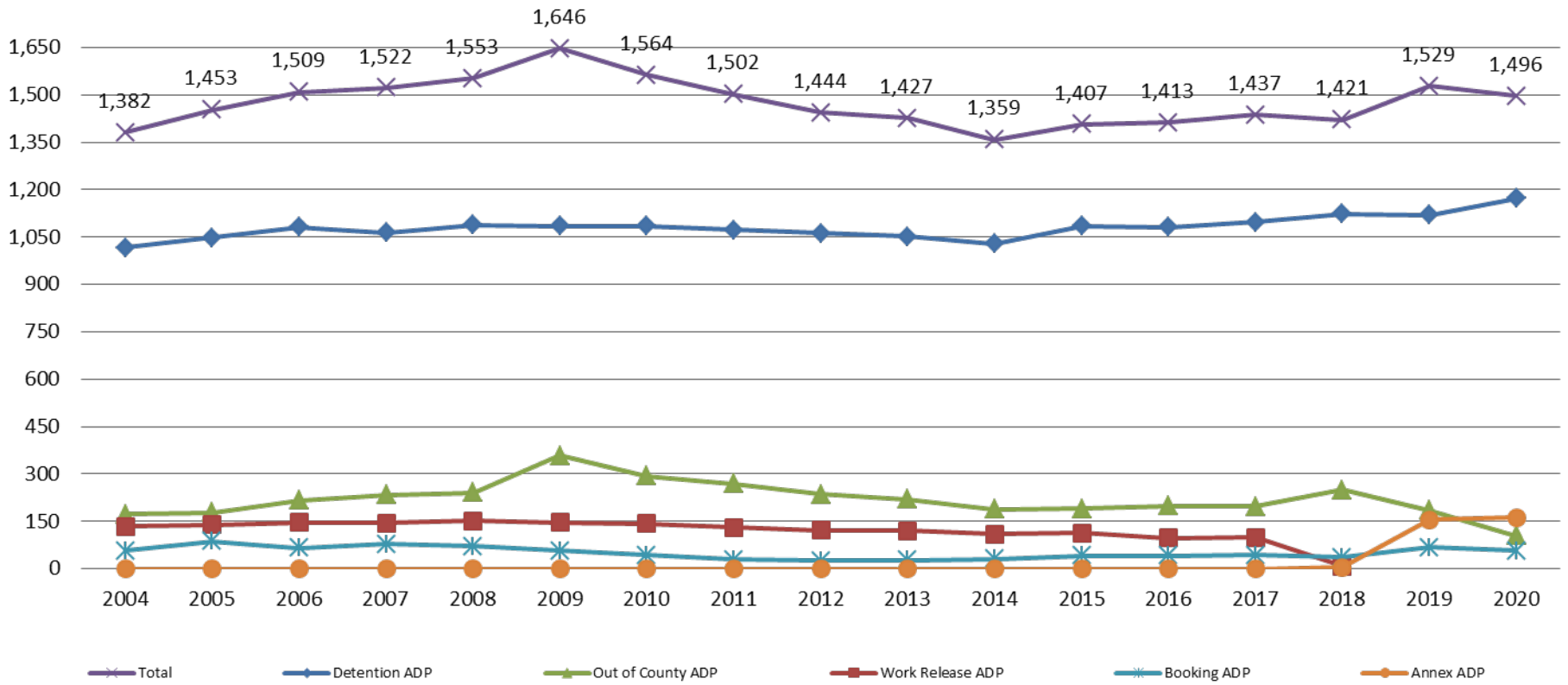


Month Year	Housing Only	Housing YTD AVG	Combined Days	Combined YTD AVG
October 2018	36.9	34.5	22.7	20.9
October 2019	41.6	41.2	19.8	20.6
October 2020	79.1	58.9	28.9	23.8

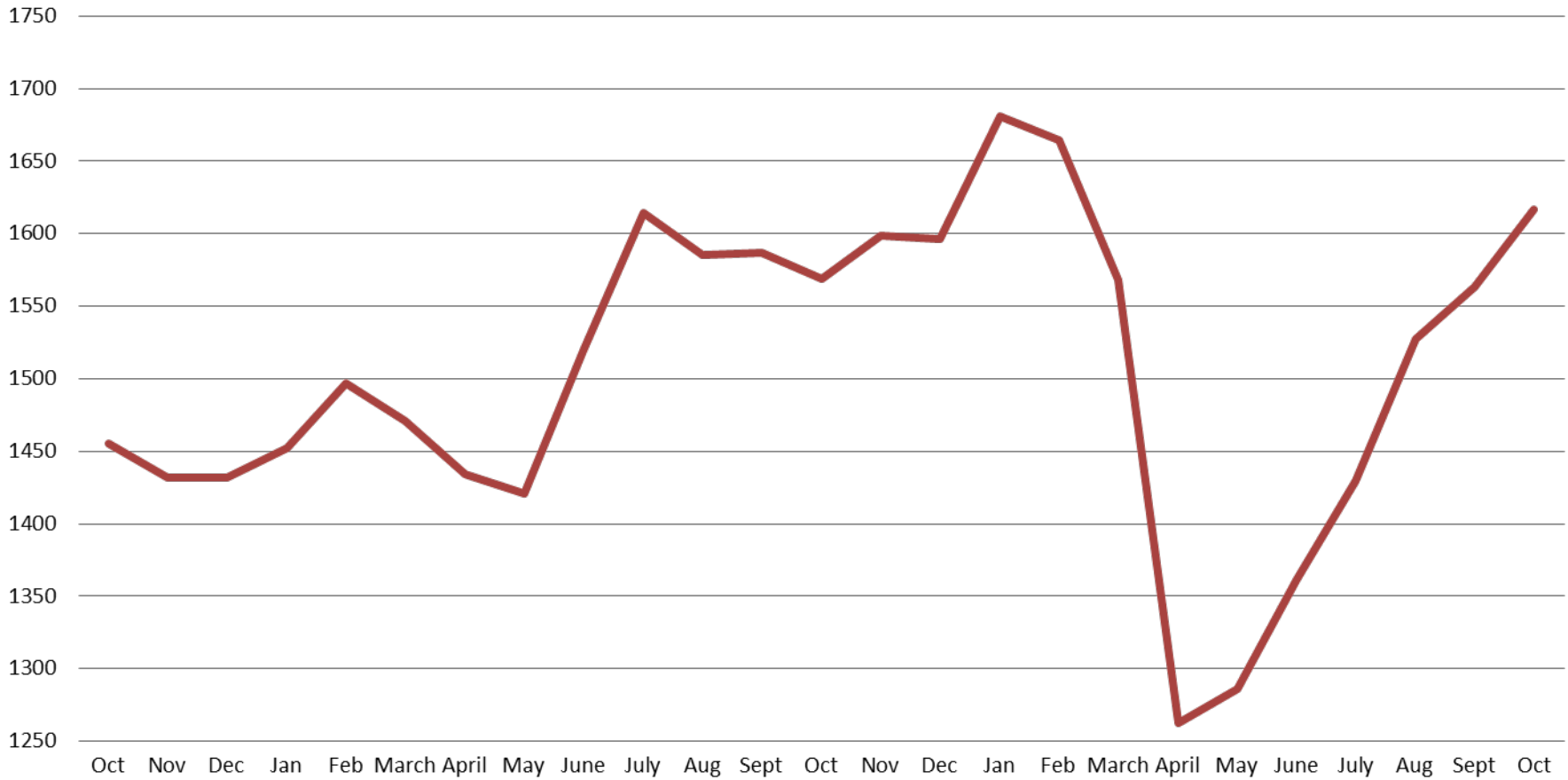


Jail: Annual Average Daily Population (ADP)

TRENDS: Booking, Detention, Work Release, & Out of County Annual ADP: 2004 - present



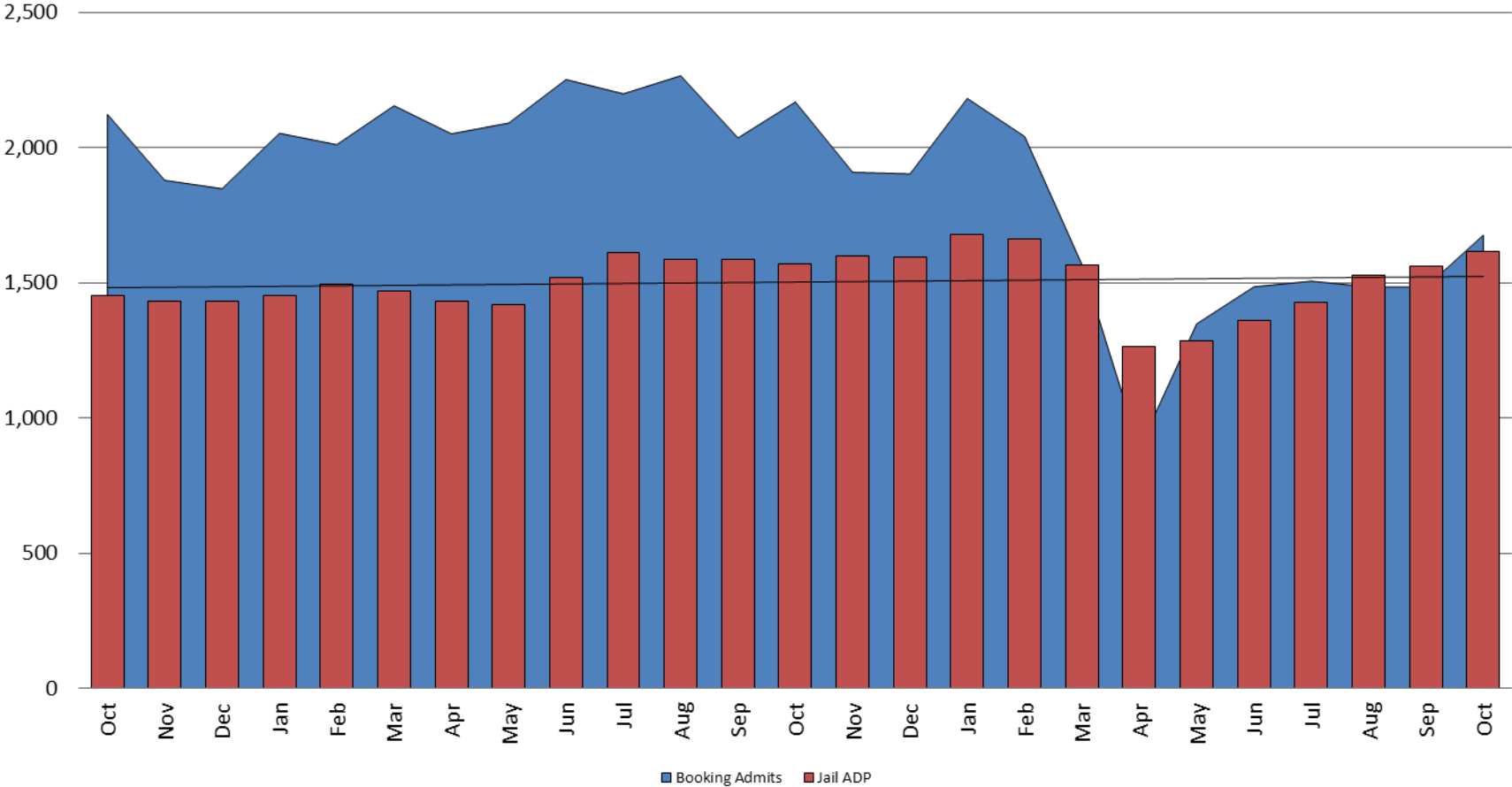
TOTAL MONTHLY ADP: JAIL (Booking, Detention Facility, Annex, & Out of County) October 2018 - present



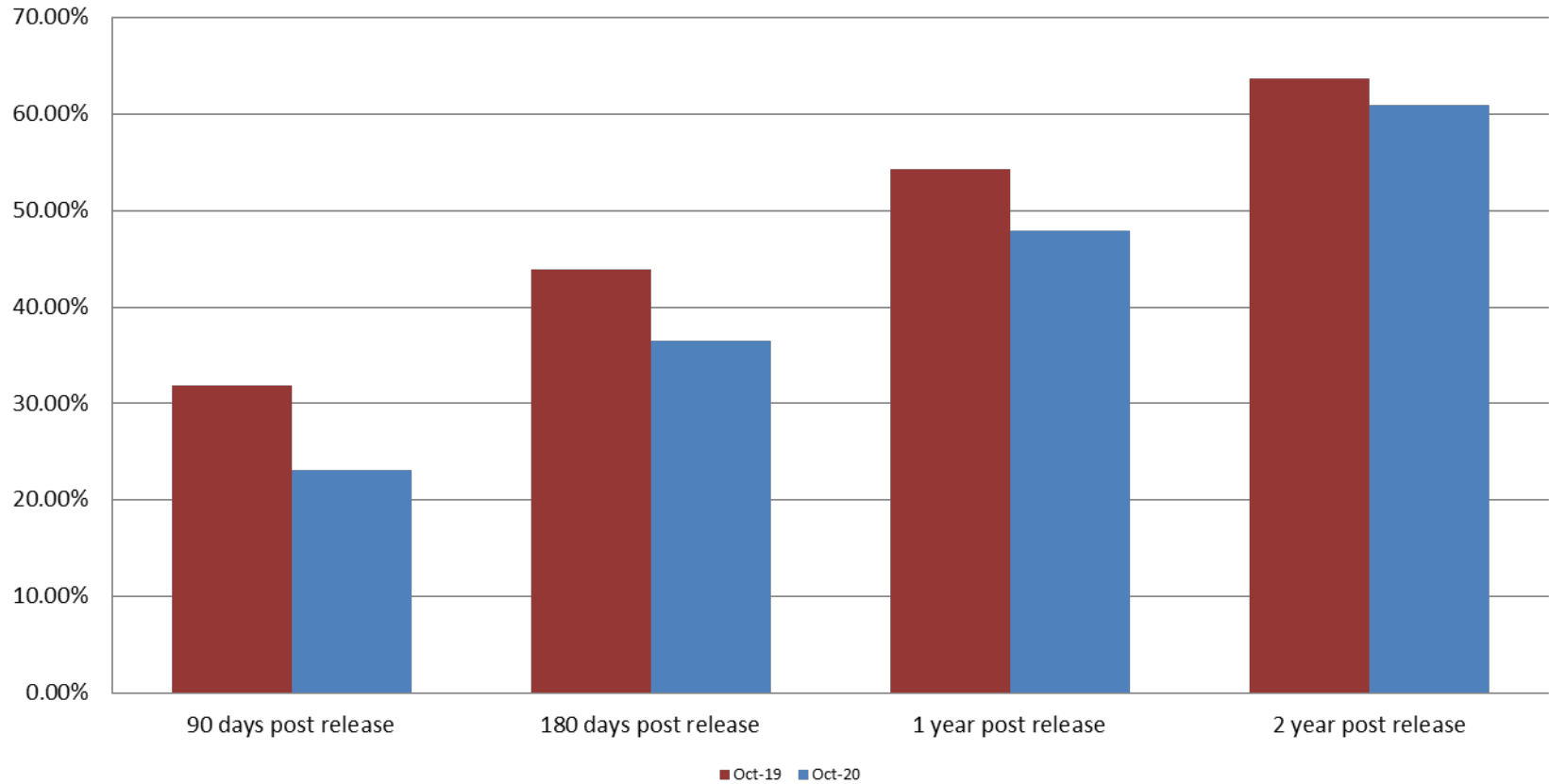
October 2018	October 2019	October 2020
1,455	1,569	1,617



Booking Admits & Total Monthly ADP (Jail): October 2018 - present



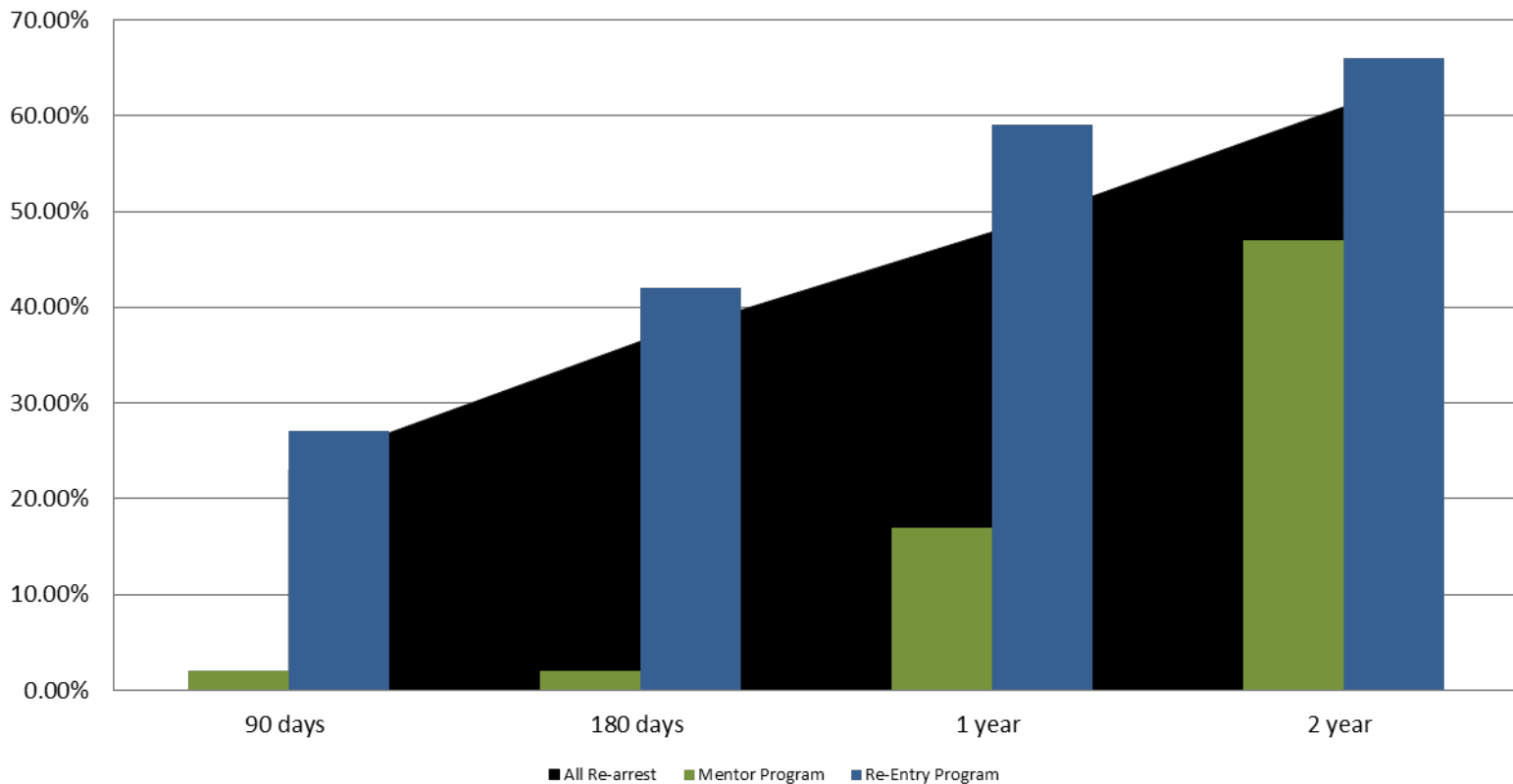
Percent of released inmates rearrested October



Month Year	90 Days	180 Days	1 Year	2 Years
October 2019	31.84%	43.83%	54.31%	63.64%
October 2020	23.06%	36.45%	47.85%	60.90%



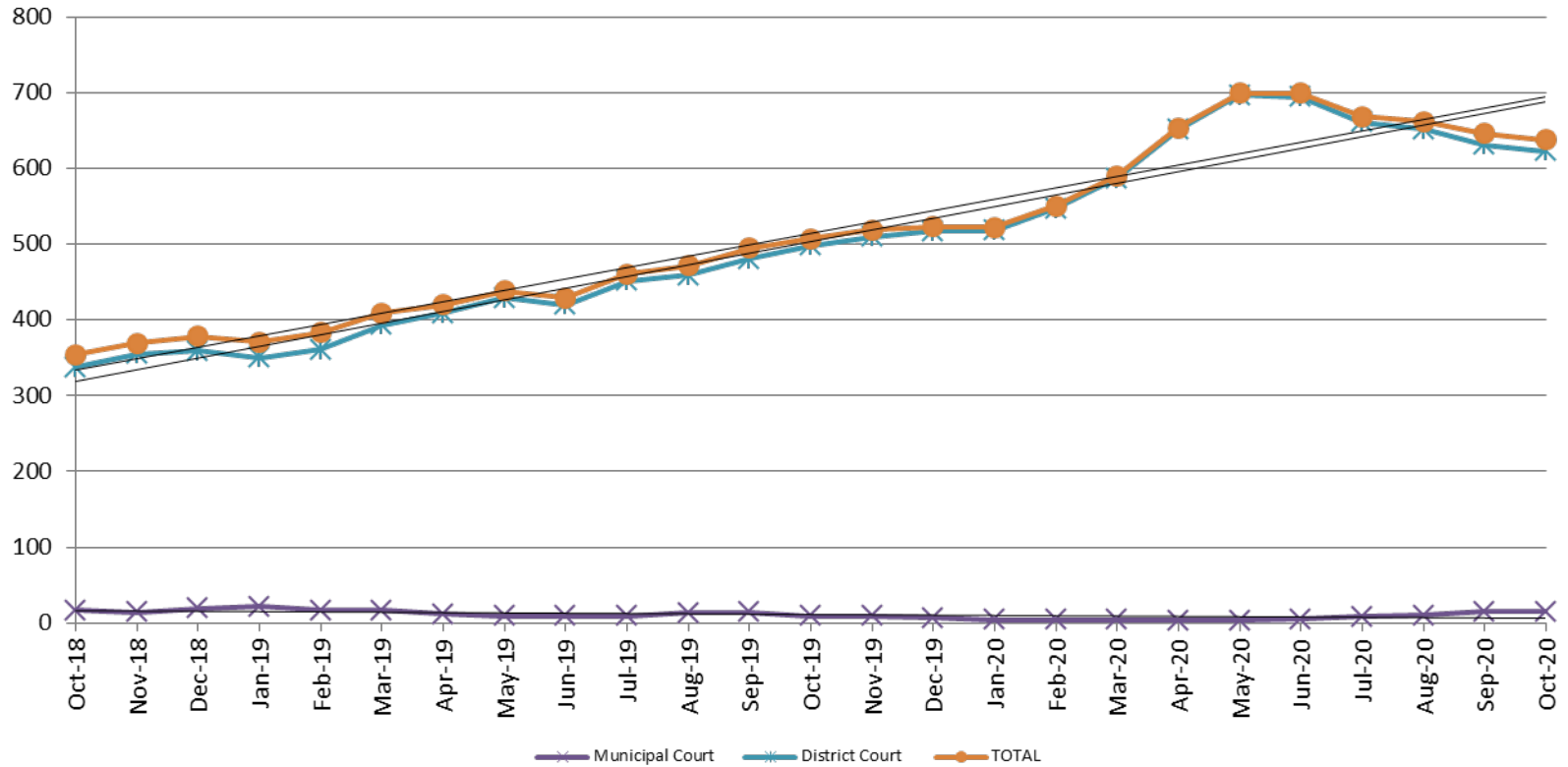
Recidivism by Programs October 2020



October 2020	90 Days	180 Days	1 year	2 years
All Re-arrests	23.06%	36.45%	47.85%	60.90%
Mentor Program	2%	2%	17%	47%
Re-Entry Program	27%	42%	59%	66%



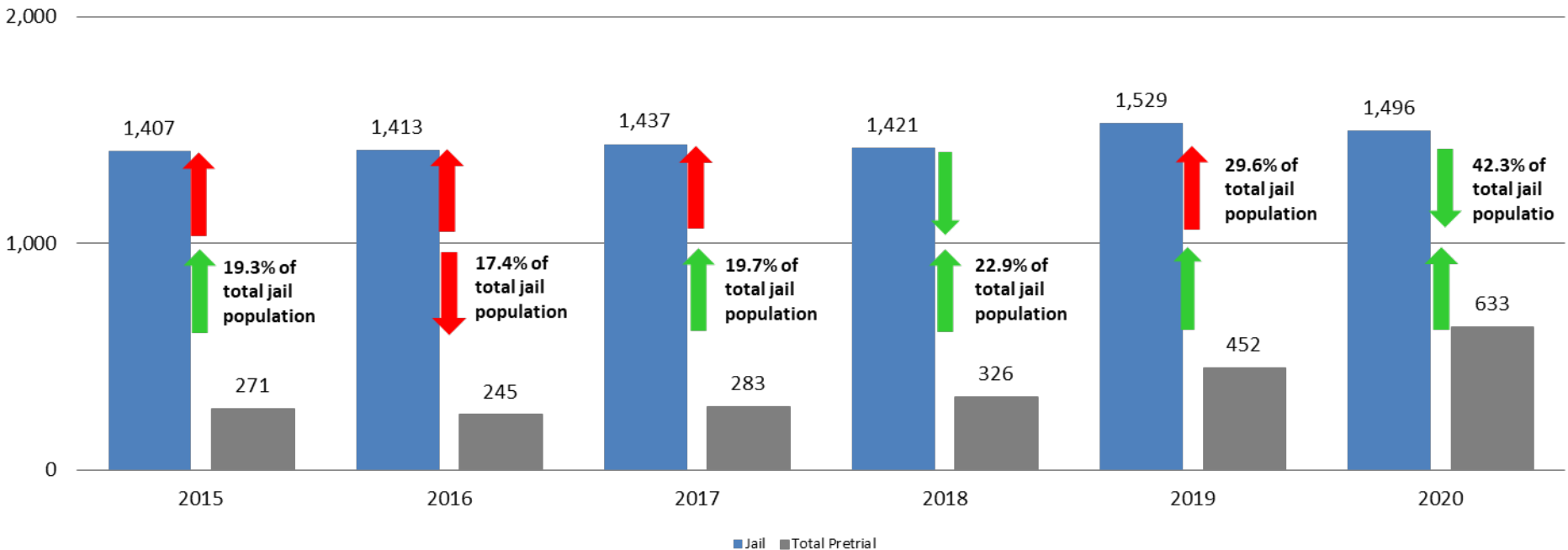
Pretrial Services Program (PSP) Monthly ADP: October 2018 - present



October	2018 ADP	2019 ADP	2020 ADP	2018 YTD Avg.	2019 YTD Avg.	2020 YTD Avg.
Muni. Court	16	9	15	26	13	7
Dist. Court	338	498	623	290	425	626
Total	354	507	638	316	439	633

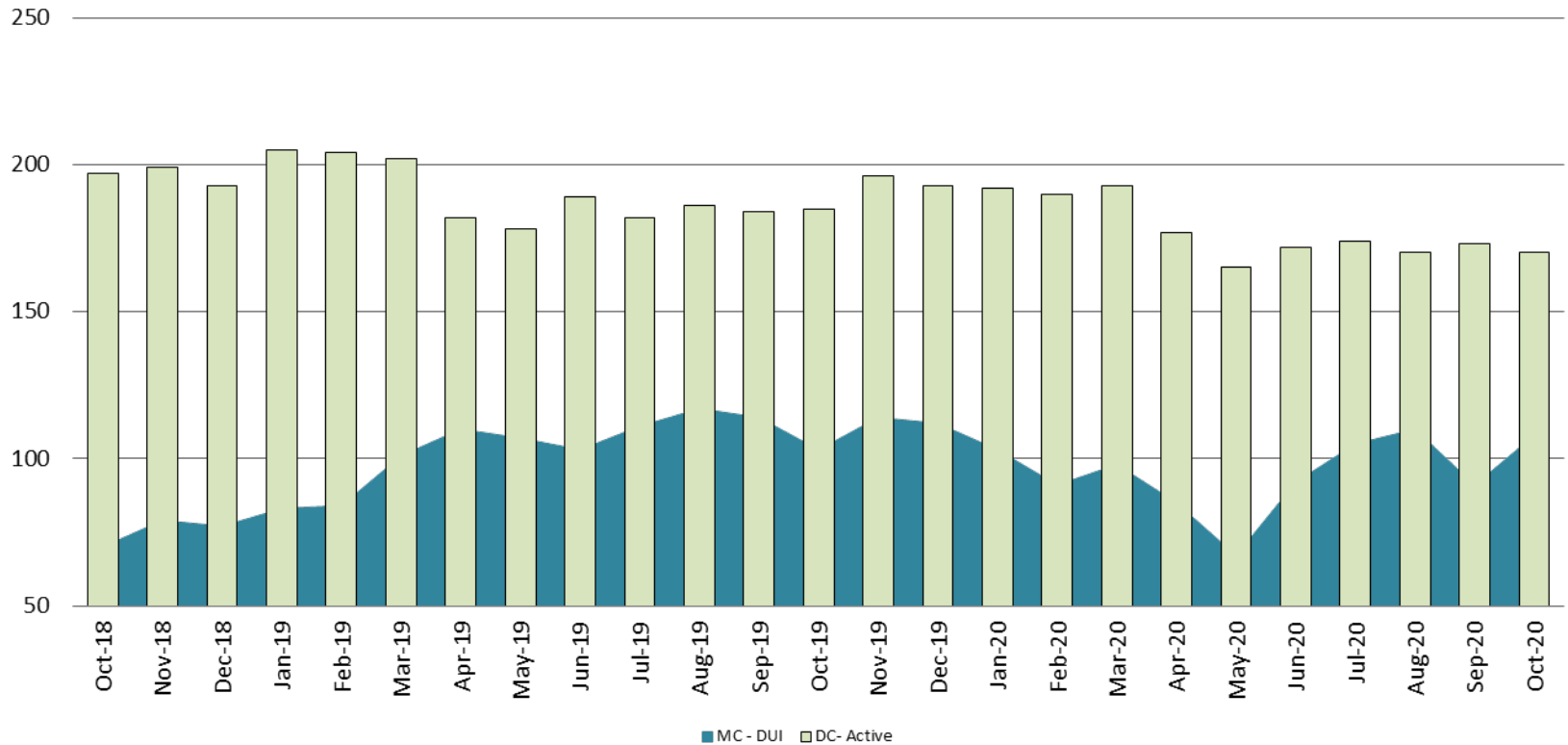
Correlation: Total & PSP

Total Annual ADP: 2015 - present



Diversion - Active Caseload

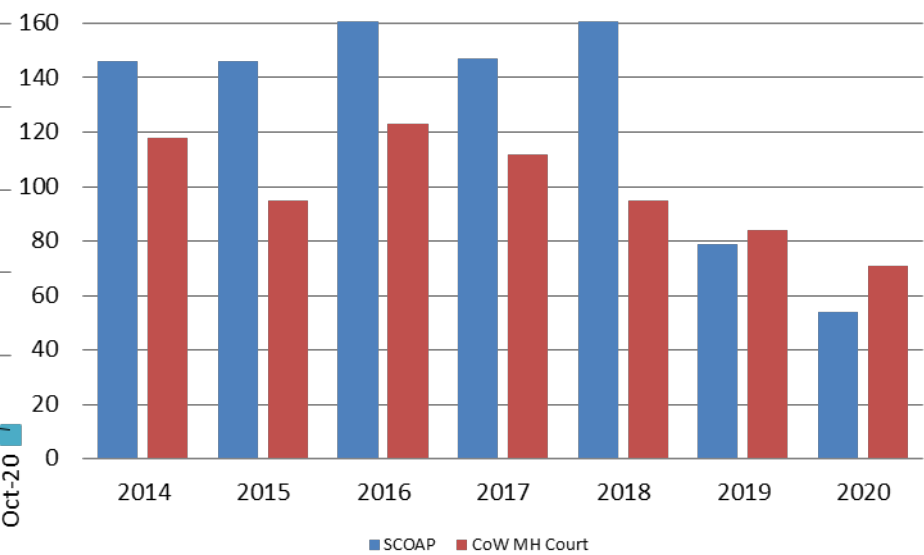
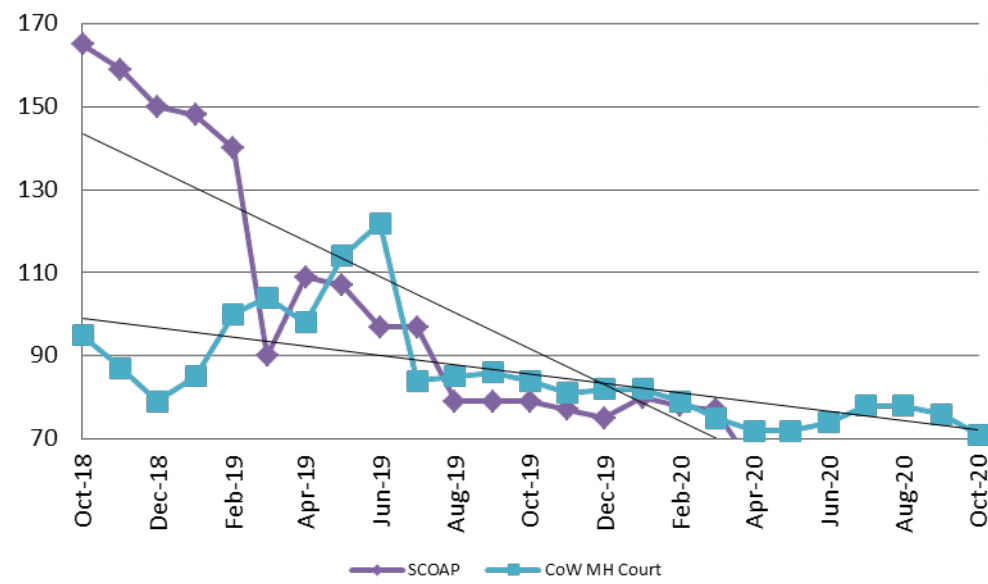
October 2018 - present



October	2018	2019	2020	2018 YTD Avg.	2019 YTD Avg.	2020 YTD Avg.
Muni. Court- DUI	70	103	108	74	103	95
Dist. Court- Active	197	185	170	198	190	178

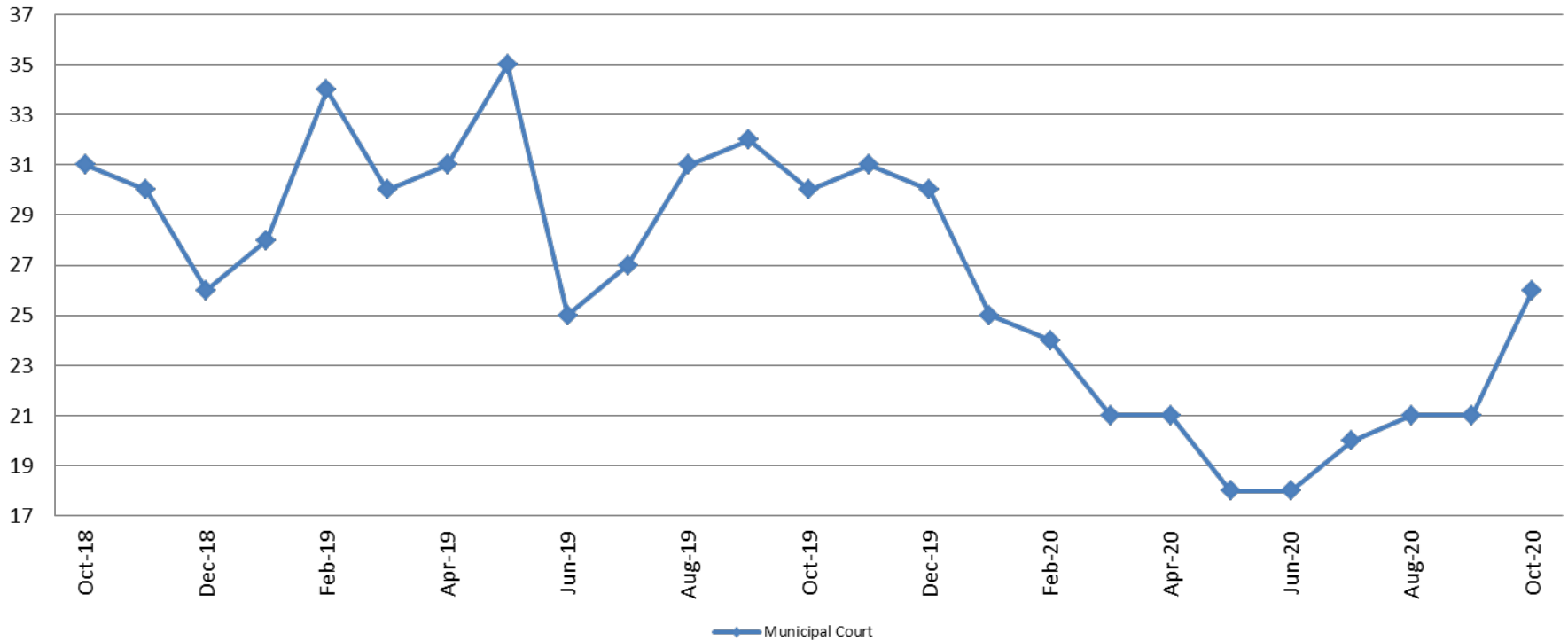
Mental Health - ADP October 2018 - present

Mental Health ADP Year over Year - October



October	2018 ADP	2019 ADP	2020 ADP	2018 YTD Avg.	2019 YTD Avg.	2020 YTD Avg.
SCOAP	165	79	54	146	103	64
MH Court	95	84	71	98	96	76

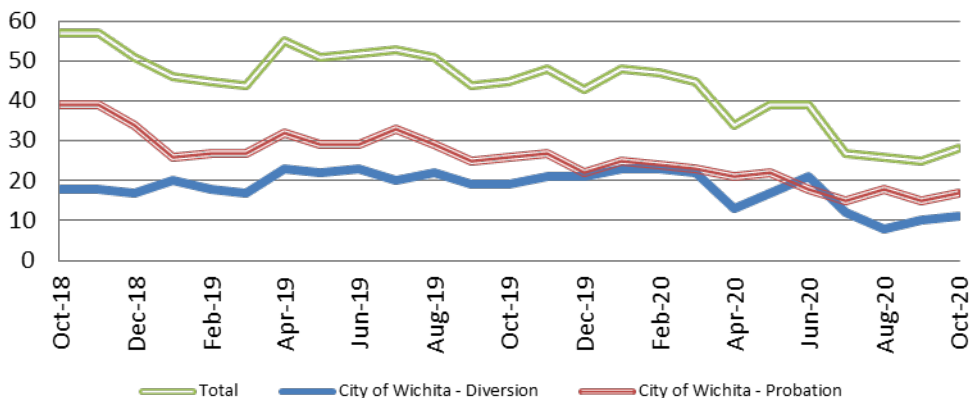
Day Reporting - Active Caseload October 2018 - present



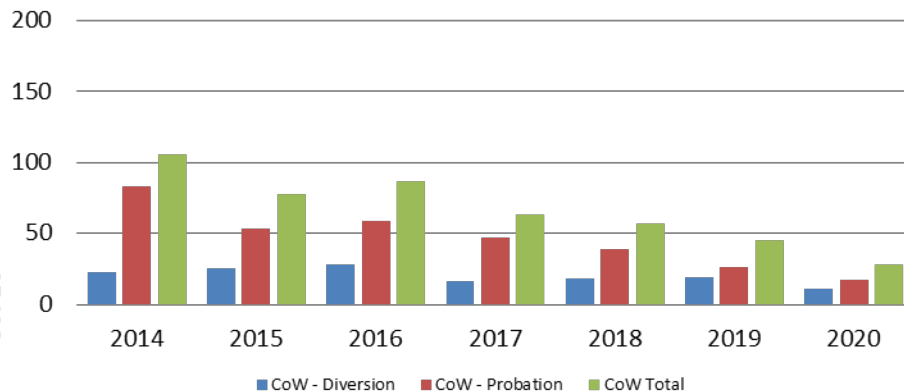
October	2015	2016	2017	2018	2019	2020
Muni. Court	60	31	40	31	30	26
Muni. Court YTD Avg.	70	41	36	34	30	22



Drug Court - City of Wichita ADP: October 2018 - present



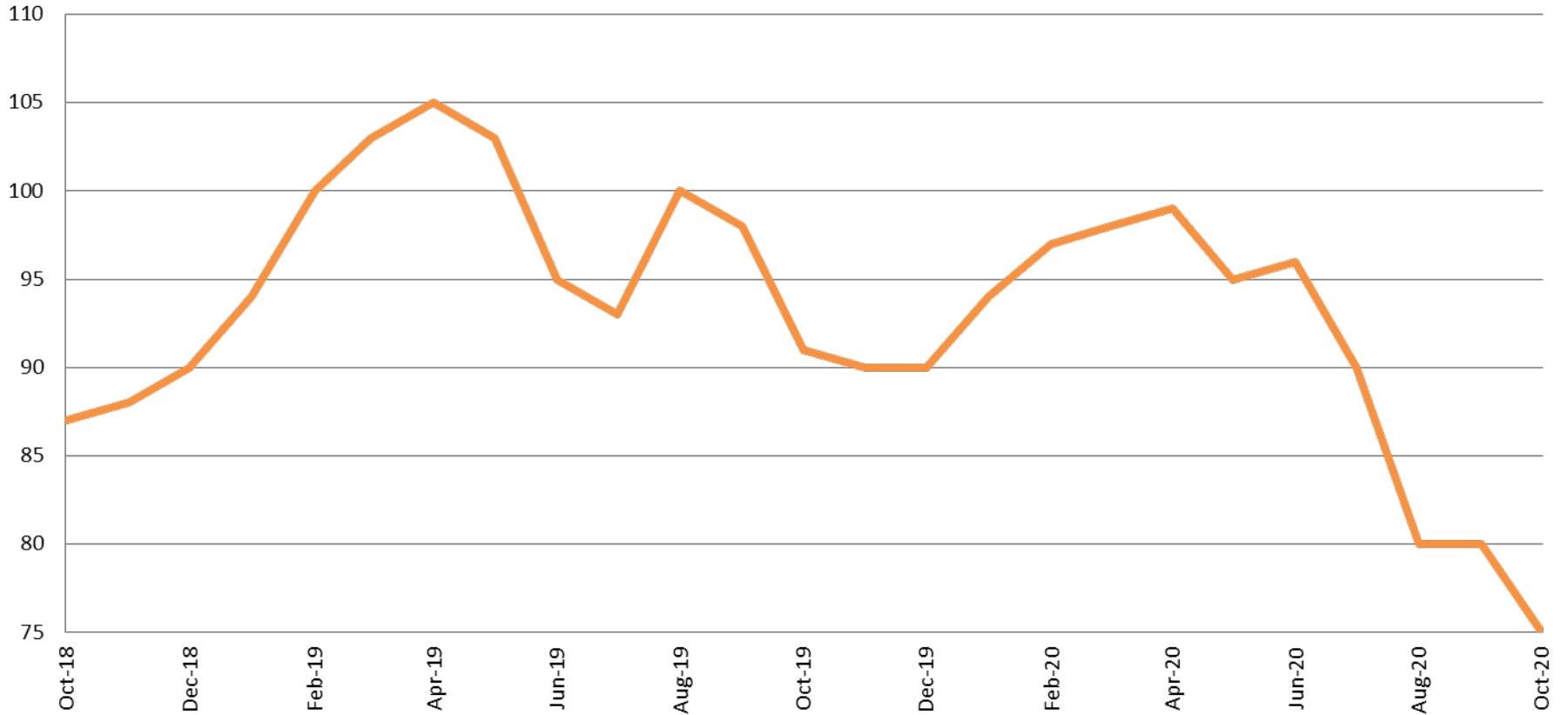
Drug Court- City of Wichita Year over Year - October



October	2018	2019	2020
Diversion	18	19	11
Probation	39	26	17
Total	57	45	28



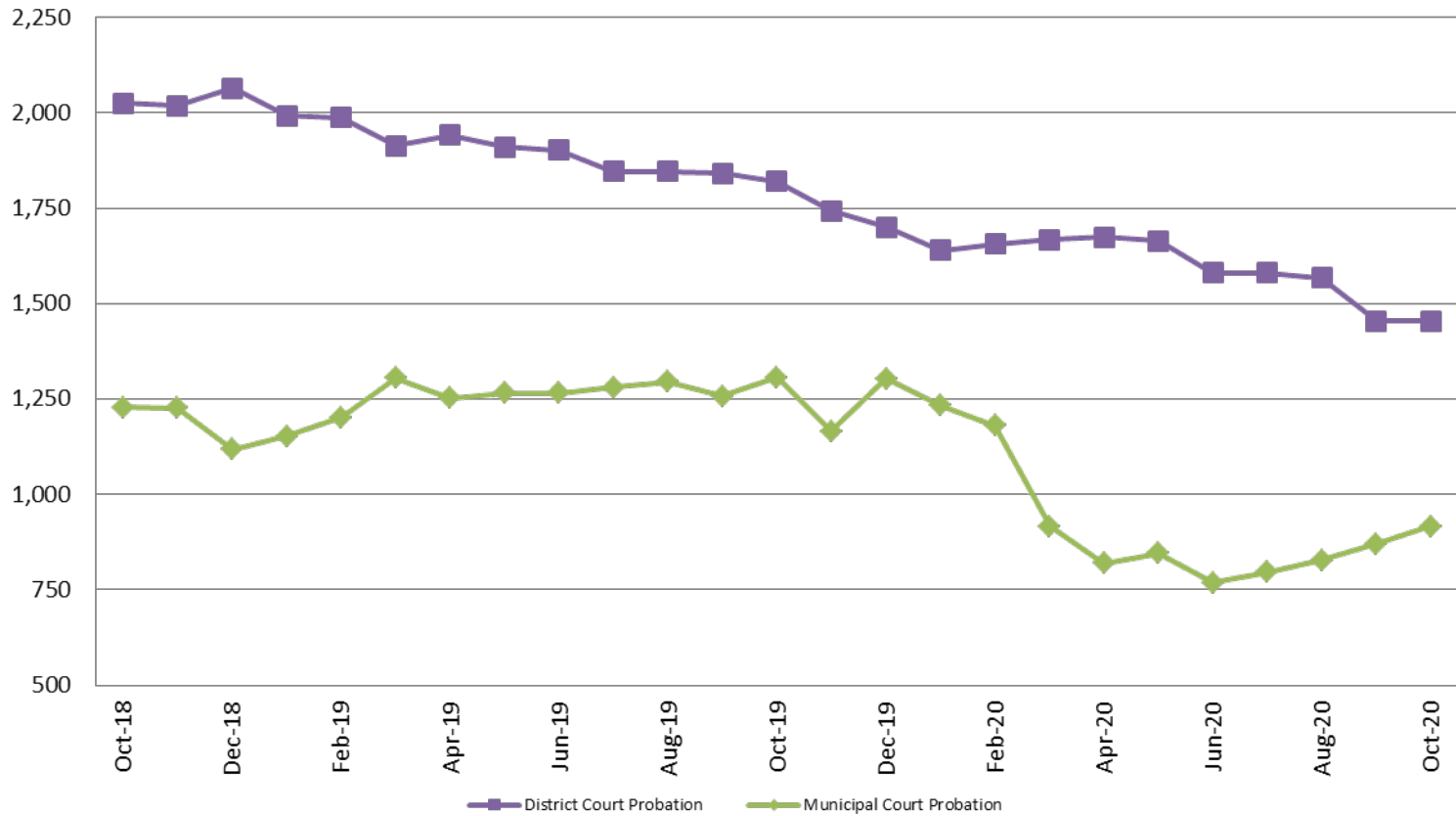
Drug Court - Sedgwick County ADP: October 2018 - present



October	2018	2019	2020
Sedg. Co. ADP	87	91	75
YTD Avg.	84	98	90



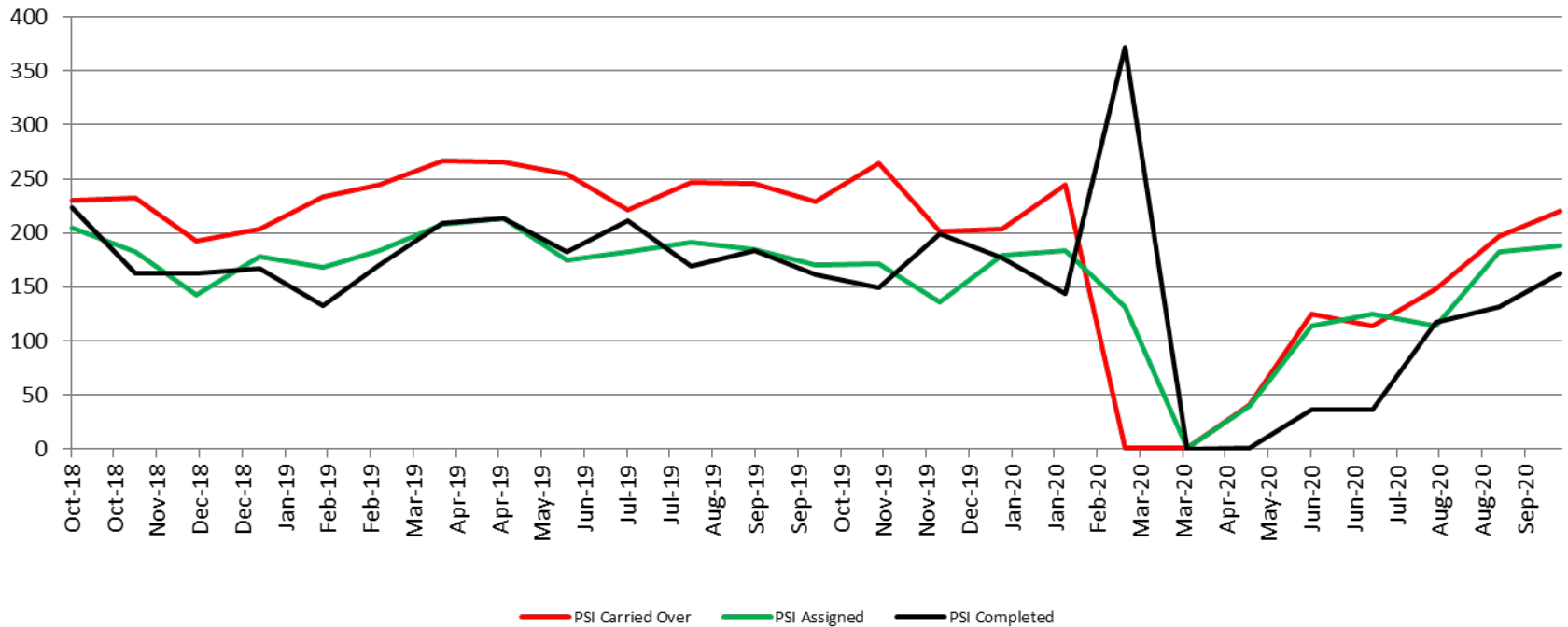
Probation - Active Caseloads October 2018 - present



October	2018	2019	2020	2018 YTD Avg.	2019 YTD Avg.	2020 YTD Avg.
Dist. Court Probation	2,026	1,820	1,455	2,104	1,900	1,594
Muni. Court Probation	1,228	1,307	916	1,214	1,258	918



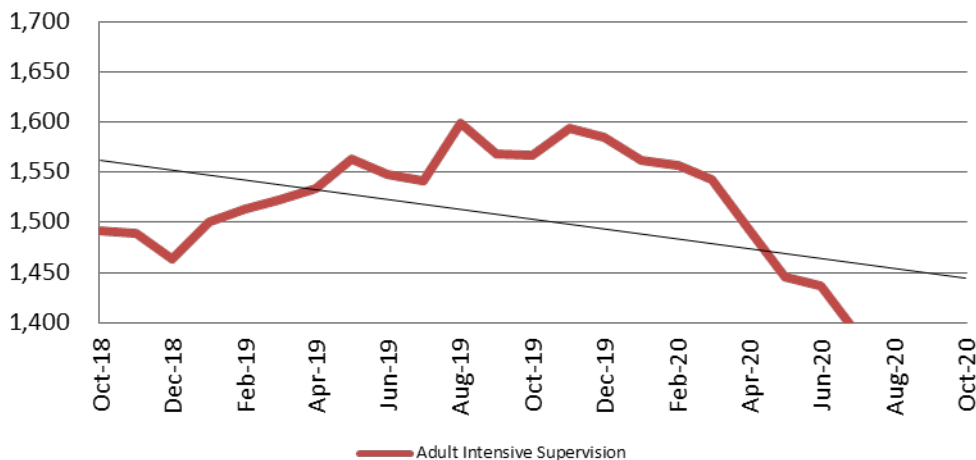
District Court Probation: Pre-Sentence Investigation October 2018 - present



October	2018	2019	2020
Carried Over	230	229	220
Assigned	205	170	188
Completed	223	161	163

Community Corrections

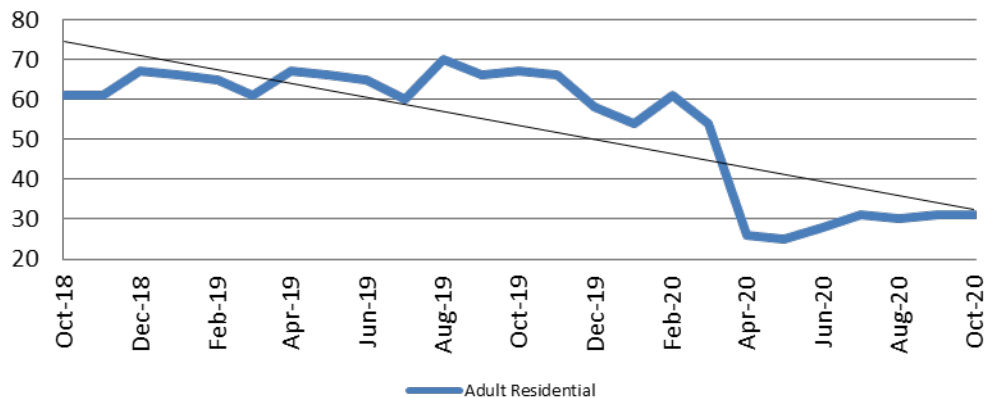
**Adult Intensive Supervision Probation (AISP):
ADP October 2018- present**



Year	October	October YTD Avg.
2018	1,491	1,472
2019	1,567	1,545
2020	1,348	1,451

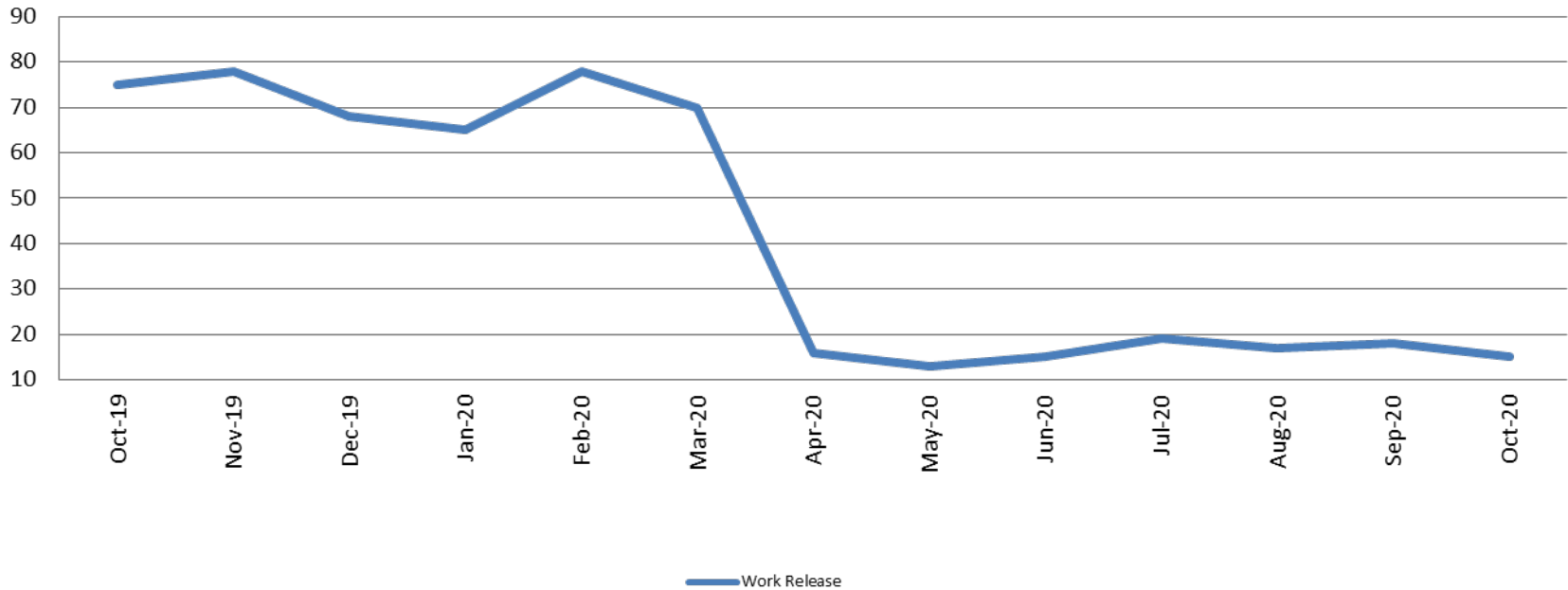
Year	October	October YTD Avg.
2018	61	58
2019	67	65
2020	31	15

**Adult Residential: ADP
October 2018 - present**



Community Corrections

Work Release: ADP October 2019 - present

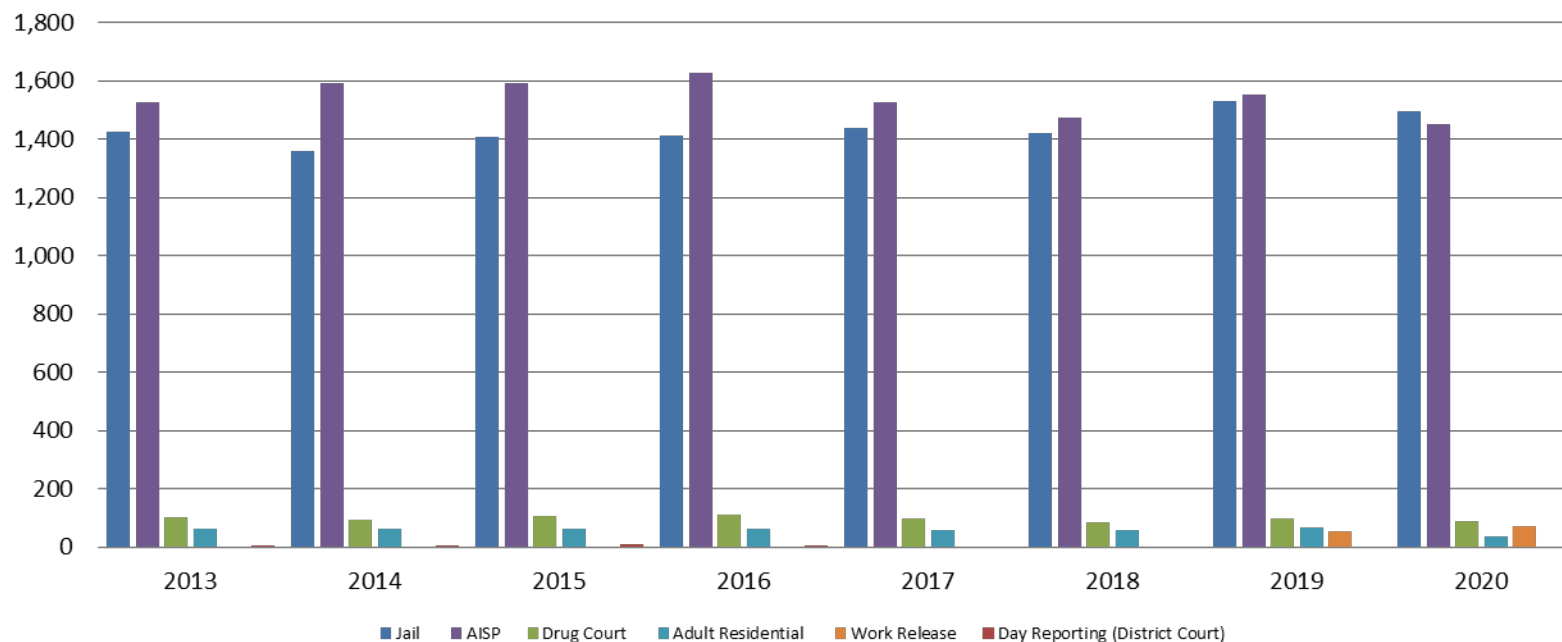


Month Year	Total	YTD Avg.
October 2019	75	70
October 2020	15	33



Correlation: Total & Sedgwick County Programs (Adult)

Total Annual ADP 2013 - present

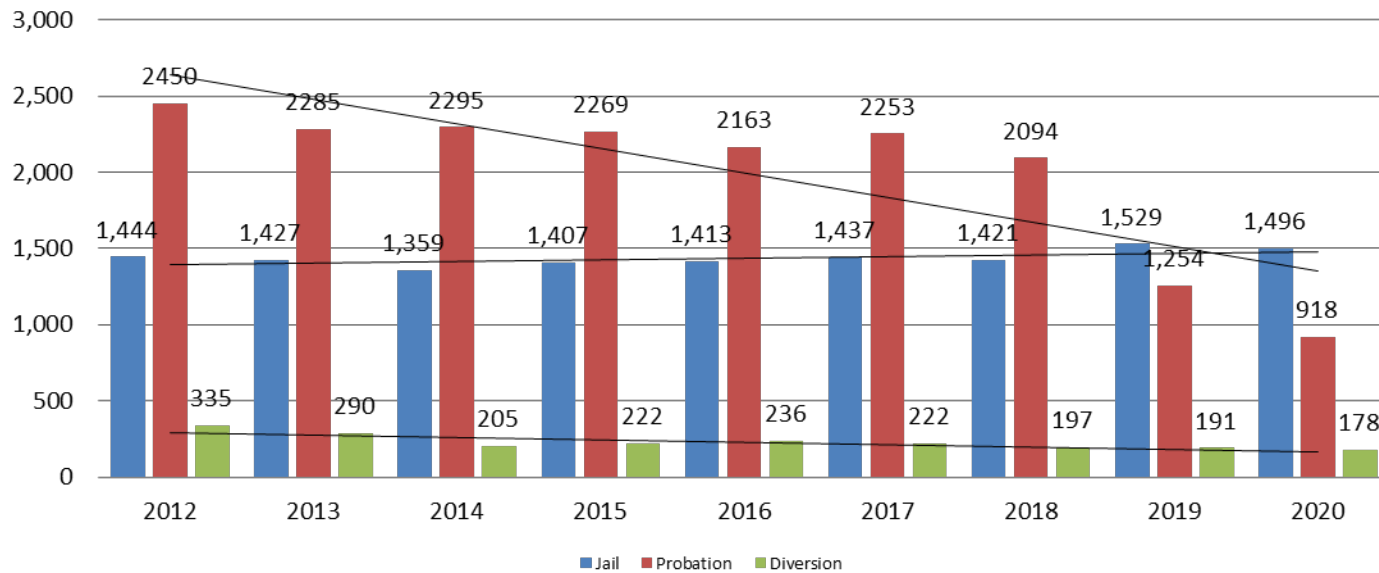


	2018	2019	2020
Jail	1,421	1,529	1,496
AISP	1,472	1,553	1,451
Drug Court	85	97	90
Adult Residential	59	65	37
Work Release	55	71	33
Day Reporting (DC)	0	0	0



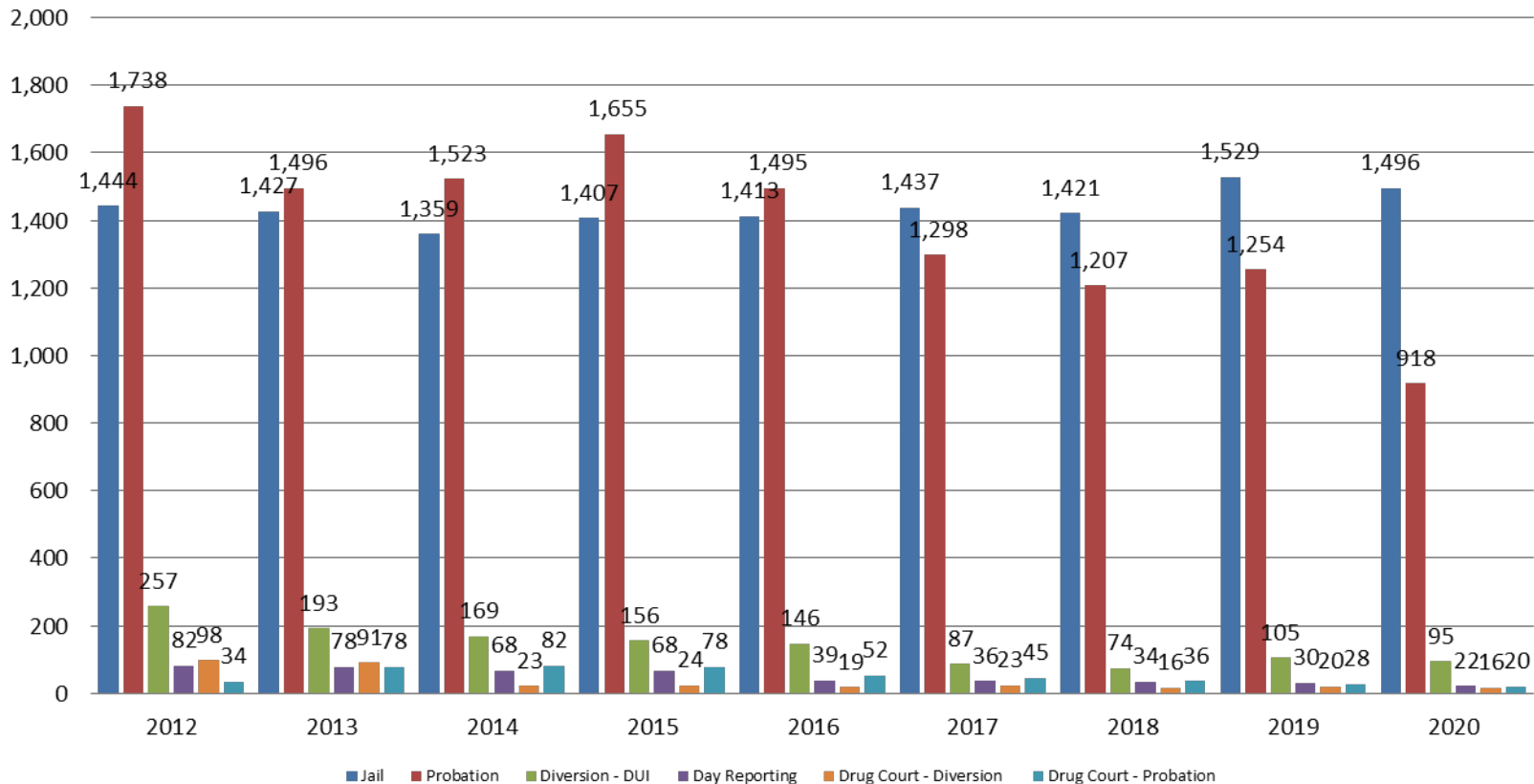
Correlation: Total & District Court Programs

Total Annual ADP: 2012 - present



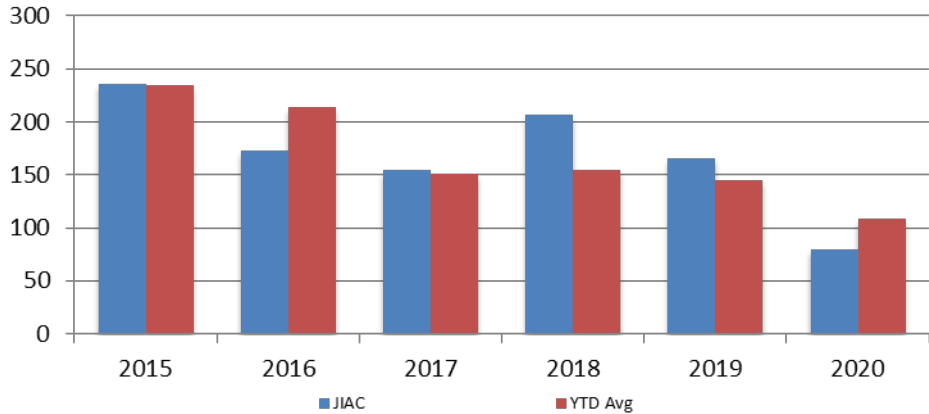
Correlation: Total & City of Wichita / Municipal Court Programs

Total Annual ADP: 2012 - present



Juvenile

JIAC Intakes
October 2015 - present

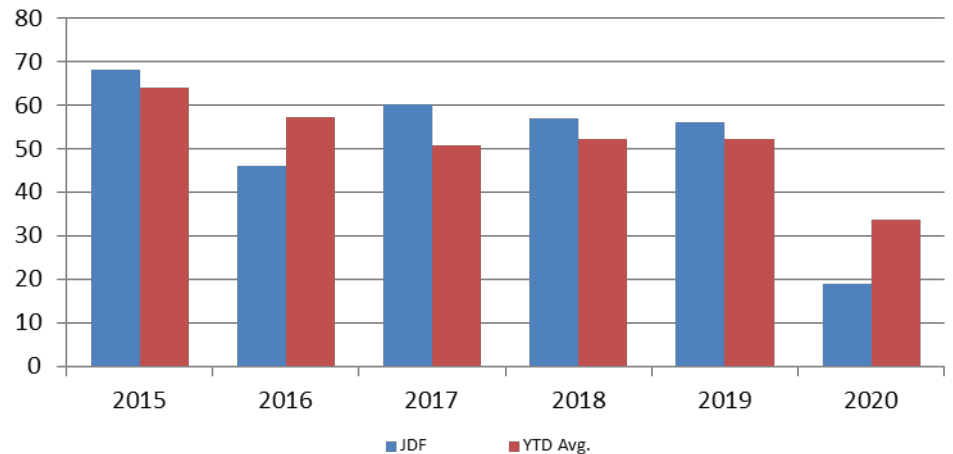


Year	October	October YTD Avg.
2015	236	234
2016	173	214
2017	154	151
2018	207	155
2019	166	145
2020	80	108

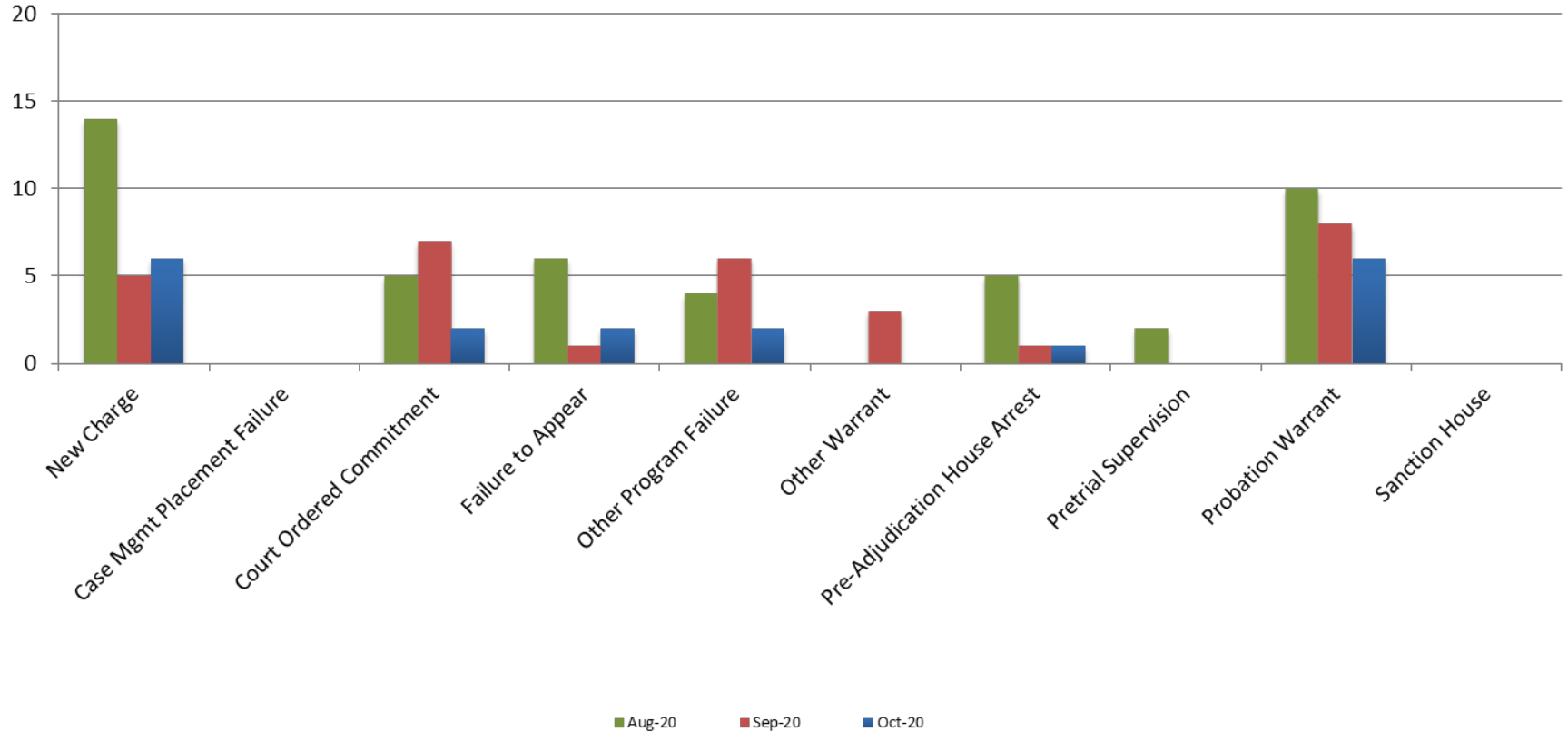
Year **October** **October YTD Avg.**

2015	68	64
2016	46	47
2017	60	51
2018	57	52
2019	46	52
2020	19	34

JDF ADP
October 2015 - present



Reason for JDF Admits



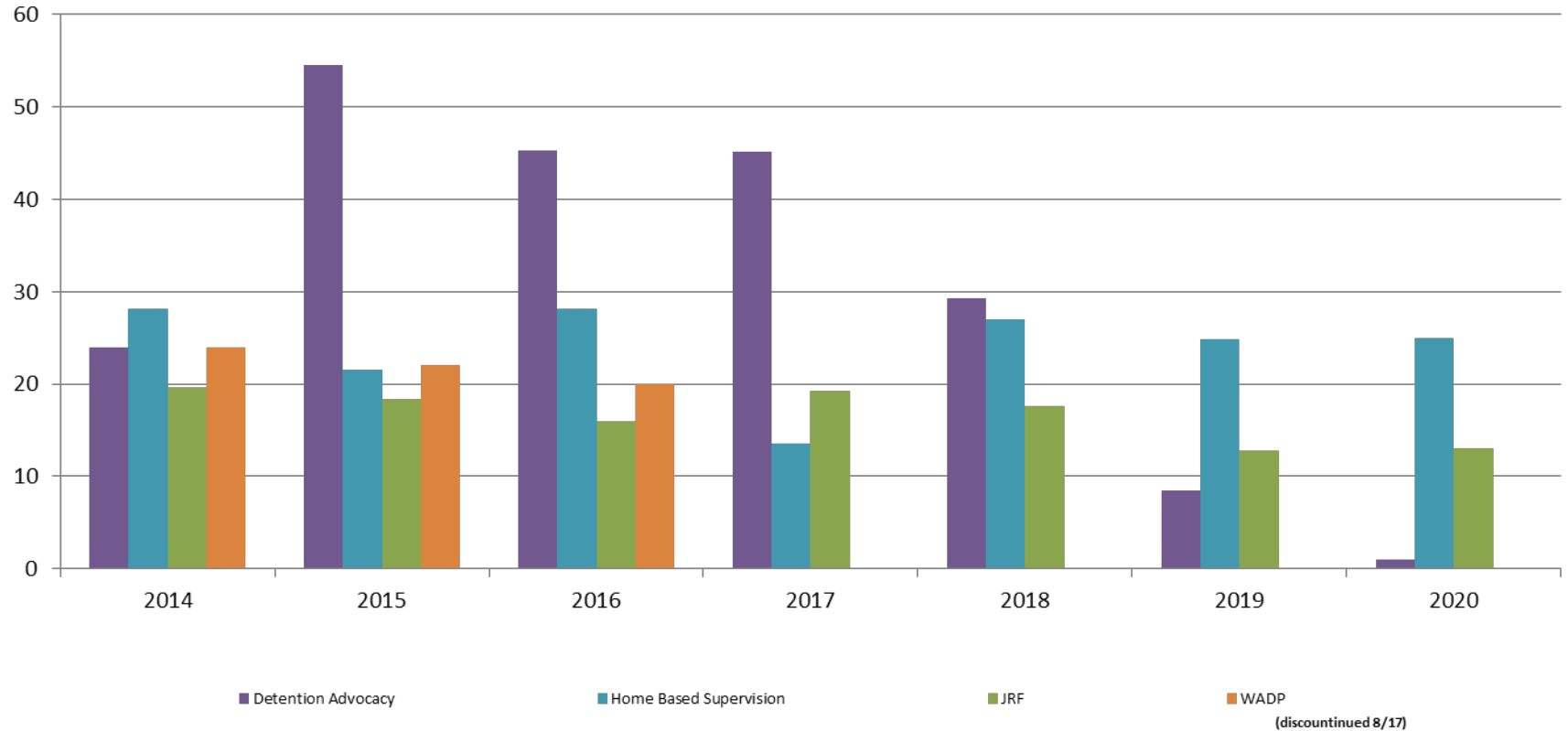
Reason for JDF Admits

Reason	October 2019	October 2020
New Charges	23	6
Case Management Placement Failures	0	0
Court Ordered Commitment	3	2
Failure to Appear	4	2
Other Program Failure	2	2
Other Warrant	3	0
Pre-Adjudication House Arrest	2	1
Pretrial Supervision	6	0
Probation Warrant	13	6
Sanction House	0	0



Juvenile Detention Alternatives

ADP: October 2014 - present



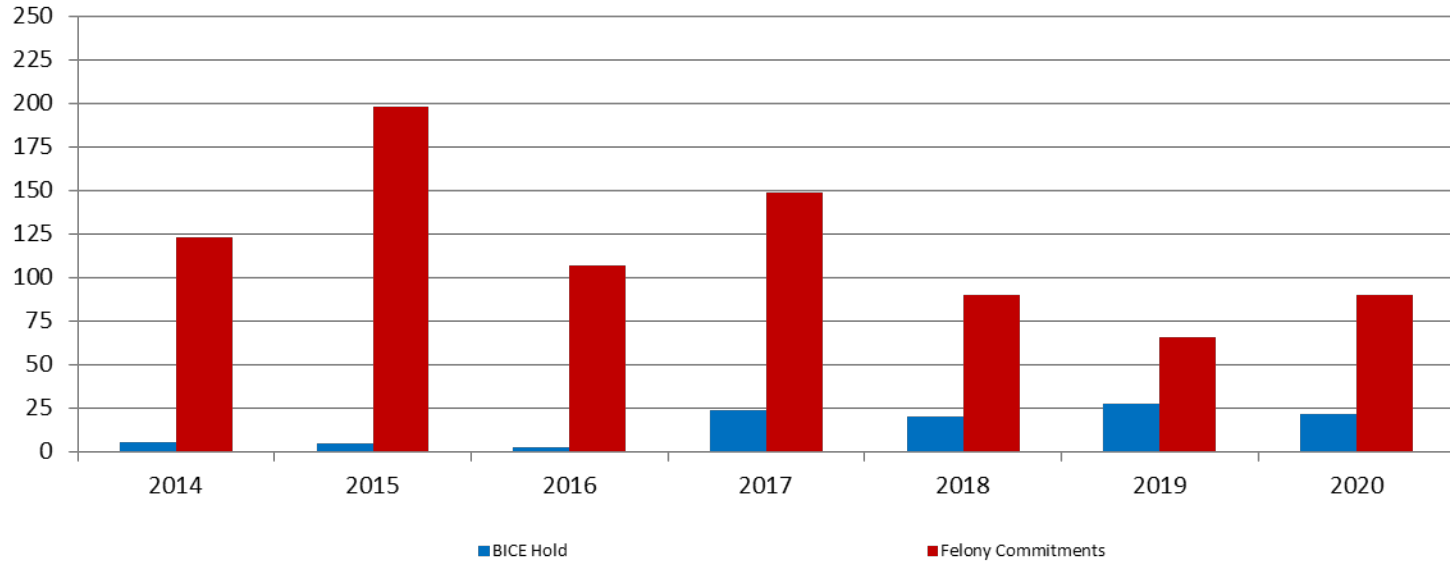
Juvenile Detention Services

October ADP	2017	2018	2019	2020
Juvenile Detention Facility	60	57	56	19
Juvenile Residential Facility	19	18	13	13
Home Based Supervision	14	27	25	25
Detention Advocacy Case Management Services	45	29	8	1
Weekend Alternative Detention Program (total)	0	0	N/A	N/A

October YTD AVERAGE	2017	2018	2019	2020
Juvenile Detention Facility	51	52	52	34
Juvenile Residential Facility	16	14	15	17
Home Based Supervision	21	25	27	29
Detention Advocacy Case Management Services	45	32	20	9
Weekend Alternative Detention Program	10	0	N/A	N/A

Monthly Jail Snapshot: June 30, 2020

Snapshots October 2014 - present

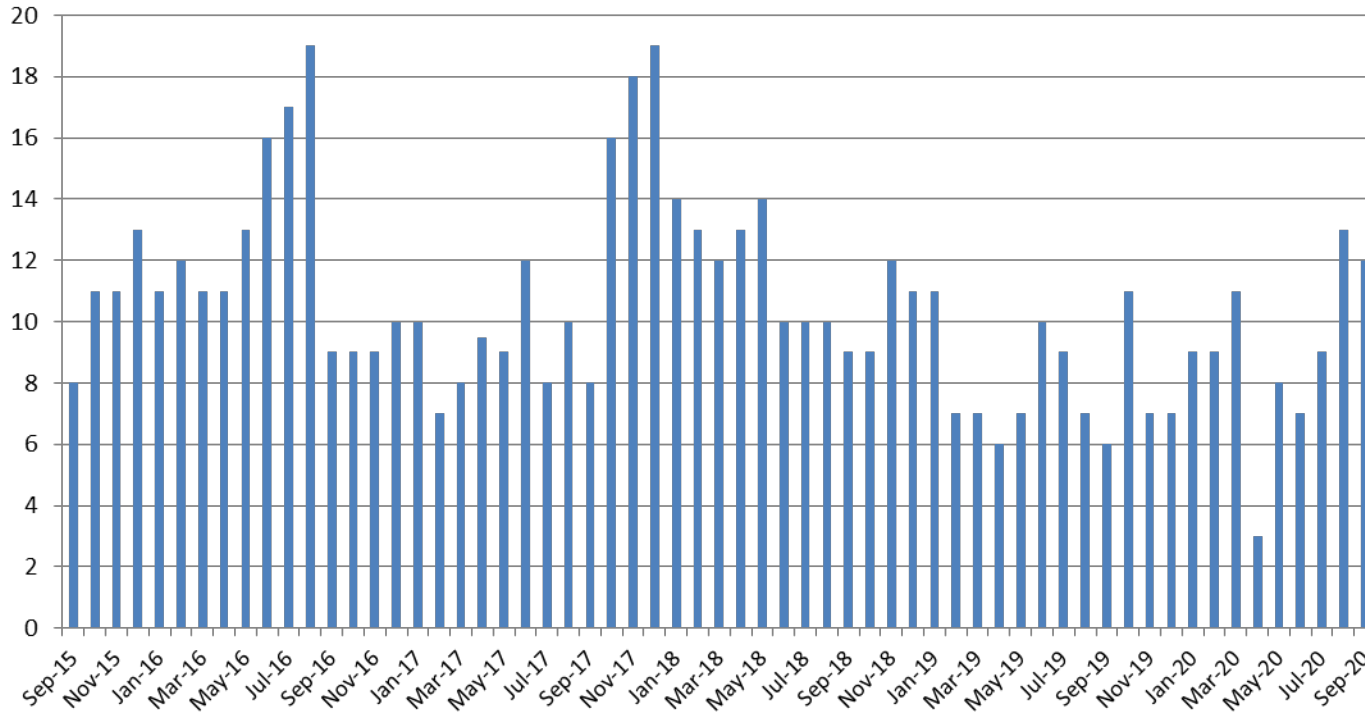


BICE Hold	2014	2015	2016	2017	2018	2019	2020
October	6	5	3	24	28	28	22

Felony Commitments	2014	2015	2016	2017	2018	2019	2020
October	123	198	107	149	66	66	90



Journal Entry Completion (Average Days) September 2015 - present



September	2015	2016	2017	2018	2019	2020
Avg. Days	8	9	8	9	6	12
YTD Avg.	9	13	9	11.4	7.7	9

