

Household Hazardous Waste

Mission: To help protect the environment by reducing the improper disposal of hazardous waste through education and by providing citizens safe and proper disposal alternatives.

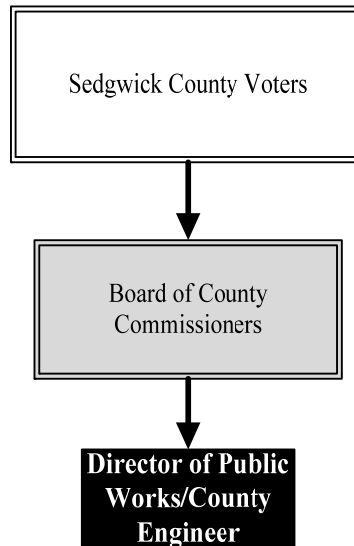
Susan Erlenwein
Director

801 Stillwell
Wichita, KS 67213
316.660.7464

susan.erlenwein@sedgwick.gov

Overview

The Household Hazardous Waste (HHW) Facility accepts common household hazardous wastes from individuals at no charge, keeps convenient hours and features a swap-n-shop from which citizens may take and reuse selected materials. Small businesses qualifying as small quantity generators may use the facility and pay the County's contract disposal rate. Operations are funded by the Solid Waste Fee, which is assessed against all property owners in the County, and sales of recycled paint, waste oil, and batteries that are disposed of at the HHW facility. HHW partners with sponsoring communities to hold five remote collection events annually. Over the last five years, 69,965 vehicles dropped off more than 6,839,793 pounds of waste at the events.



Strategic Goals:

- Increase compliance with the Sedgwick County Solid Waste Code through enforcement and education
- Improve customer service and outreach with addition of remote collection events
- Help more small quantity generators manage and dispose of their hazardous waste property

Highlights

- Household Hazardous Waste Facility handled 1,165,815 pounds of hazardous waste from 21,763 citizens in 2014
- Household Hazardous Waste Facility received 79,641 pounds of waste from 318 businesses in 2014
- Household Hazardous Waste Department provided five remote collection events in 2014, receiving 125,653 pounds of waste with 1,313 participants



Accomplishments and Priorities

Accomplishments

The amount of waste handled by the Department has grown each year since the County assumed responsibility for the program in 2001. In the past 14 years, the HHW Facility has seen a 252 percent increase in participants and an increase of 274 percent of hazardous waste handled. Staff continues to work to fine-tune and publicize the program and encourage an increasing percentage of citizens to properly dispose of hazardous waste.

By offering free, convenient disposal of household hazardous chemicals, HHW provides an economic incentive for citizens to properly dispose of hazardous waste. Keeping these materials out of the environment contributes to a safer and cleaner community and improves the community's potential to recruit top businesses and people. Additionally, the Department ensures the safe handling of household hazardous materials, saves citizens money by avoiding the significant cost of disposal and at the same time making strides towards a safer, cleaner community.

Priorities

In the 2016 operating year, staff will be challenged by the anticipated continued growth in demand for HHW services. Within the limitations of available staffing the Department intends to expand used oil and silver recovery pickup routes. The HHW program expects continued growth in key areas that are considered "hot topics" nationally.

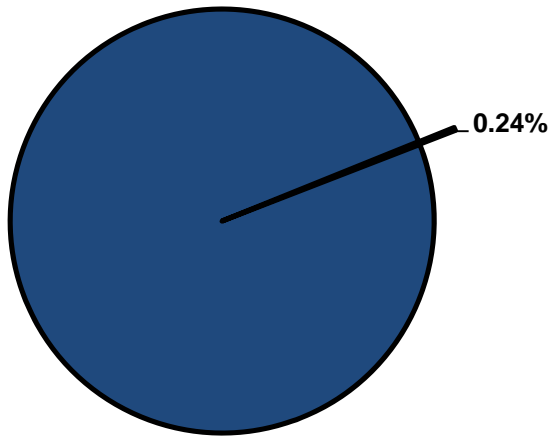


Significant Budget Adjustments

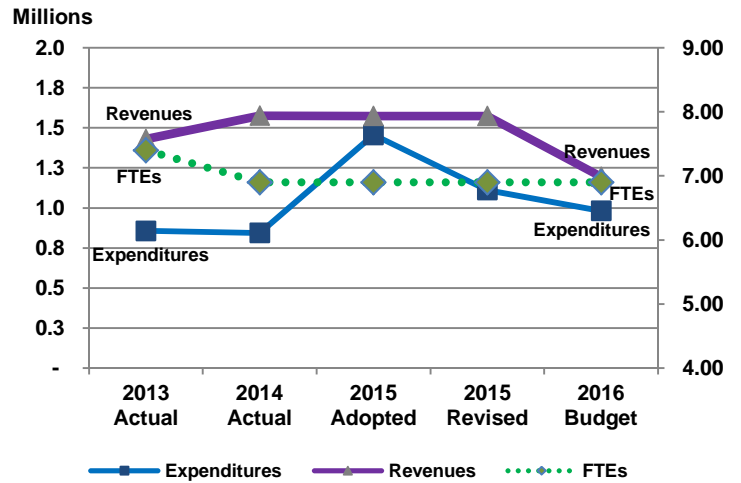
Changes to Household Hazardous Waste's 2016 budget include the elimination of the Storm Debris Contingency for a reduction of \$480,000.

Departmental Graphical Summary

Household Hazardous Waste
Percent of Total County Operating Budget



Expenditures, Program Revenue & FTEs
All Operating Funds



Budget Summary by Category

	2013 Actual	2014 Actual	2015 Adopted	2015 Revised	2016 Budget	Amount Chg '15 Rev.-'16	% Chg '15 Rev.-'16
Expenditures							
Personnel	348,818	386,397	414,802	414,802	421,612	6,810	1.64%
Contractual Services	279,551	324,786	911,833	566,939	429,773	(137,166)	-24.19%
Debt Service	-	-	-	-	-	-	-
Commodities	49,050	52,313	49,500	49,500	49,500	-	0.00%
Capital Improvements	48	-	-	-	-	-	-
Capital Equipment	-	-	-	-	-	-	-
Interfund Transfers	179,277	79,839	80,170	80,170	80,315	145	0.18%
Total Expenditures	856,744	843,335	1,456,304	1,111,410	981,200	(130,211)	-11.72%
Revenues							
Tax Revenues	-	-	-	-	-	-	-
Licenses and Permits	-	-	-	-	-	-	-
Intergovernmental	-	-	-	-	-	-	-
Charges for Services	1,428,946	1,572,944	1,573,942	1,573,942	1,194,017	(379,925)	-24.14%
All Other Revenue	96	3,428	96	96	-	(96)	-100.00%
Total Revenues	1,429,043	1,576,372	1,574,038	1,574,038	1,194,017	(380,021)	-24.14%
Full-Time Equivalent (FTEs)							
Property Tax Funded	-	-	-	-	-	-	-
Non-Property Tax Funded	7.40	6.90	6.90	6.90	6.90	-	0.00%
Total FTEs	7.40	6.90	6.90	6.90	6.90	-	0.00%

Budget Summary by Fund

Fund	2013 Actual	2014 Actual	2015 Adopted	2015 Revised	2016 Budget	Amount Chg '15 Rev.-'16	% Chg '15 Rev.-'16
Solid Waste	856,744	843,335	1,456,304	1,111,410	981,200	(130,211)	-11.72%
Total Expenditures	856,744	843,335	1,456,304	1,111,410	981,200	(130,211)	-11.72%

Significant Budget Adjustments from Prior Year Revised Budget

	Expenditures	Revenues	FTEs
Eliminate Storm Debris Contingency	(480,000)		
Total	(480,000)	-	-

Budget Summary by Program

Program	Fund	2013 Actual	2014 Actual	2015 Adopted	2015 Revised	2016 Budget	% Chg '15 Rev.-'16	2016 FTEs
HHW Services	208	856,744	843,335	976,304	976,304	981,200	0.50%	6.90
Storm Debris Contingency	208	-	-	480,000	135,106	-	-100.00%	-
Total		856,744	843,335	1,456,304	1,111,410	981,200	-11.72%	6.90

Personnel Summary By Fund

Position Titles	Fund	Grade	Budgeted Compensation Comparison			FTE Comparison		
			2015 Adopted	2015 Revised	2016 Budget	2015 Adopted	2015 Revised	2016 Budget
Environmental Resources Director	208	GRADE136	38,424	39,950	39,950	0.40	0.40	0.40
HHW Operations Supervisor	208	GRADE127	43,202	44,399	44,399	1.00	1.00	1.00
Administrative Specialist	208	GRADE123	17,082	17,453	17,453	0.50	0.50	0.50
Senior Technician - HHW	208	GRADE121	66,501	67,962	67,962	2.00	2.00	2.00
HHW Technician	208	GRADE119	94,117	96,127	96,127	3.00	3.00	3.00
Subtotal					265,891			
Add:								
Budgeted Personnel Savings					-			
Compensation Adjustments					6,837			
Overtime/On Call/Holiday Pay					1,513			
Benefits					147,371			
Total Personnel Budget					421,612	6.90	6.90	6.90

● Household Hazardous Waste Services

The HHW Facility is a place Sedgwick County residents can dispose of old chemicals and household hazardous waste free of charge. It offers a way to get rid of old chemicals and materials to help prevent them from getting into the waste stream and polluting the environment. HHW will accept almost all chemical items from a residential house, such as: paint, aerosols, batteries, used oil, gasoline, antifreeze, pesticides, herbicides, garden chemicals, household cleaners, fluorescent bulbs and propane. Businesses generating less than 55 pounds a month of hazardous waste are eligible to use the Small Quantity Generator program at the Household Hazardous Waste Facility. HHW is funded by the solid waste fee assessed to properties in Sedgwick County.

Fund(s): Solid Waste 208

Expenditures	2013 Actual	2014 Actual	2015 Adopted	2015 Revised	2016 Budget	Amnt. Chg. '15 - '16	% Chg. '15 - '16
Personnel	348,818	386,397	414,802	414,802	421,612	6,810	1.6%
Contractual Services	279,551	324,786	431,833	431,833	429,773	(2,060)	-0.5%
Debt Service	-	-	-	-	-	-	0.0%
Commodities	49,050	52,313	49,500	49,500	49,500	-	0.0%
Capital Improvements	48	-	-	-	-	-	0.0%
Capital Equipment	-	-	-	-	-	-	0.0%
Interfund Transfers	179,277	79,839	80,170	80,170	80,315	145	0.2%
Total Expenditures	856,744	843,335	976,304	976,304	981,200	4,896	0.5%
Revenues							
Taxes	-	-	-	-	-	-	0.0%
Intergovernmental	-	-	-	-	-	-	0.0%
Charges For Service	1,428,946	1,572,944	1,573,942	1,573,942	1,194,017	(379,925)	-24.1%
All Other Revenue	96	3,428	96	96	-	(96)	-100.0%
Total Revenues	1,429,043	1,576,372	1,574,038	1,574,038	1,194,017	(380,021)	-24.1%
Full-Time Equivalents (FTEs)	7.40	6.90	6.90	6.90	6.90	-	0.0%

● Storm Debris Contingency

The storm debris contingency was established within the solid waste fund to provide budget authority for unplanned disposal costs of solid waste. Established after the 1991 Haysville tornado, the primary focus of this fund center was to assist with the tipping fees and other costs of disposing of the aftermath of storm damage. Originally included in the Household Hazardous Waste budget, it was shifted to a separate fund center for improved visibility. The resolution authorizing the program was rescinded in 2015.

Fund(s): Solid Waste 208

Expenditures	2013 Actual	2014 Actual	2015 Adopted	2015 Revised	2016 Budget	Amnt. Chg. '15 - '16	% Chg. '15 - '16
Personnel	-	-	-	-	-	-	0.0%
Contractual Services	-	-	480,000	135,106	-	(135,106)	-100.0%
Debt Service	-	-	-	-	-	-	0.0%
Commodities	-	-	-	-	-	-	0.0%
Capital Improvements	-	-	-	-	-	-	0.0%
Capital Equipment	-	-	-	-	-	-	0.0%
Interfund Transfers	-	-	-	-	-	-	0.0%
Total Expenditures	-	-	480,000	135,106	-	(135,106)	-100.0%
Revenues							
Taxes	-	-	-	-	-	-	0.0%
Intergovernmental	-	-	-	-	-	-	0.0%
Charges For Service	-	-	-	-	-	-	0.0%
All Other Revenue	-	-	-	-	-	-	0.0%
Total Revenues	-	-	-	-	-	-	0.0%
Full-Time Equivalents (FTEs)	-	-	-	-	-	-	0.0%