

INTRUST Bank Arena

Mission: *The INTRUST Bank Arena is a modern, first-class sports and entertainment venue owned by Sedgwick County and operated by SMG, providing 15,000 seats for basketball games. The INTRUST Bank Arena is home to indoor sporting events, concerts, family shows and other entertainment.*

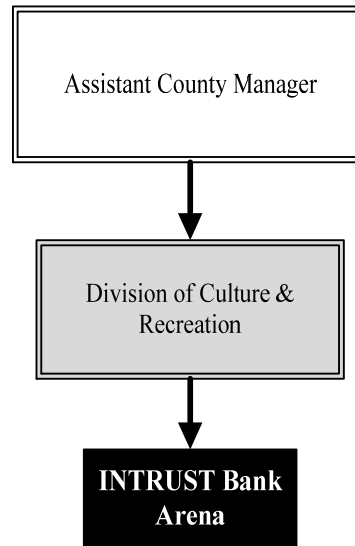
Ron Holt
Assistant County Manager

525 North Main, Suite 343
 Wichita, KS 67203
 316.660.9393
rholt@sedgwick.gov

Overview

The INTRUST Bank Arena is a modern, state-of-the-art sports and entertainment venue, perfect for concerts and conventions alike. Located in the heart of downtown Wichita with restaurants, shops and eclectic entertainment options nearby, the INTRUST Bank Arena is the premier arena in the Midwest.

Construction costs associated with the INTRUST Bank Arena were funded without debt from the proceeds of a special one-percent County sales tax, which was approved by voters in November 2004. This method allowed for the Arena to be constructed while the revenue was collected, eliminating the need for securing bonds to finance the project, saving approximately \$112 million in interest. The arena sales tax revenues exceeded projections and totaled \$206.5 million.



Strategic Goals:

- *Continue to provide quality entertainment for the citizens of Sedgwick County*

Highlights

- INTRUST Bank Arena held over 200 performances and events in 2012.
- 349,612 tickets were sold in 2012 with an average attendance per performance of 4,759.
- Net income in 2012 was \$703,260, and in May 2013 SMG presented Sedgwick County with a check for \$253,260 for the County's share of profits.



Accomplishments and Priorities

Accomplishments

SMG pursues every act that is planning to tour arenas and continues work to secure a diverse group of acts at INTRUST Bank Arena. Events for 2013 include:

- Wichita Thunder regular and post-season games
- Cirque Du Soleil
- Disney On Ice
- Harlem Globetrotters
- Shinedown and Three Days Grace
- Zac Brown Band
- Wichita Ribfest
- Taylor Swift
- Blake Shelton
- NBA Preseason Game: Oklahoma City Thunder vs. Chicago Bulls

Priorities

The INTRUST Bank Arena contributes toward promoting, supporting and facilitating the creation of wealth and employment opportunities in downtown Wichita. The Metropolitan Area Planning Department (MAPD), which is jointly funded by Sedgwick County and the City of Wichita, is tasked with producing the neighborhood redevelopment plan for the area surrounding the INTRUST Bank Arena.

One of the unique aspects of the Arena project was continuous involvement by citizens. Commissioners encouraged citizen engagement as a means of soliciting ideas, concerns and views throughout the planning, design and construction processes. Two citizen-based committees, the Citizen Arena Sales Tax Oversight Committee and the Citizen Design Review Committee, were created to ensure public participation, as well as facilitating numerous public meetings. In addition, the Sedgwick County website is utilized in an effort to continue to keep the operation of the Arena transparent.



Significant Budget Adjustments

There are no significant budget adjustments to the Downtown Arena's 2014 budget.

• Arena Operations

Senate Bill 58, signed on April 4, 2005 by Governor Kathleen Sebelius, authorized Sedgwick County to collect a one percent sales tax for a period of 30 months beginning July 1, 2005. The proceeds for this tax were specifically designated for the construction of an Arena in the downtown area of Wichita, renovations to the Kansas Pavilions, and an operating/maintenance reserve for the INTRUST Bank Arena and the Kansas Pavilions. The Arena Operations fund center is budgeted for operation and maintenance expenditures for the INTRUST Bank Arena.

Fund(s): Downtown Arena 550

57014-550

	2012	2013	2013	2014	% Chg.
	Actual	Adopted	Revised	Budget	'13-'14
Expenditures					
Personnel	-	-	-	-	-
Contractual Services	421,049	350,000	369,711	350,000	-5.3%
Debt Service	-	-	-	-	-
Commodities	-	-	289	-	-100.0%
Capital Improvements	-	-	-	-	-
Capital Equipment	-	-	-	-	-
Interfund Transfers	-	-	-	-	-
Total Expenditures	421,049	350,000	370,000	350,000	-5.4%
Revenue					
Taxes	-	-	-	-	-
Intergovernmental	-	-	-	-	-
Charges For Service	-	590,000	590,000	590,000	0.0%
Other Revenue	290,277	-	-	-	-
Total Revenue	290,277	590,000	590,000	590,000	0.0%
Full-Time Equivalents (FTEs)	-	-	-	-	-

• Arena Capital Improvements

Senate Bill 58, signed on April 4, 2005 by Governor Kathleen Sebelius, authorized Sedgwick County to collect a one-percent sales tax for a period of 30 months beginning July 1, 2005. The proceeds for this tax were specifically designated for the construction of an Arena in the downtown area of Wichita, renovations to the Coliseum Pavilions, and an operating/maintenance reserve for the INTRUST Bank Arena and the Kansas Pavilions. The Arena Capital Improvement fund center is budgeted for INTRUST Bank Arena capital projects.

Fund(s): Downtown Arena 550

57017-550

	2012	2013	2013	2014	% Chg.
	Actual	Adopted	Revised	Budget	'13-'14
Expenditures					
Personnel	-	-	-	-	-
Contractual Services	23,793	-	-	-	-
Debt Service	-	-	-	-	-
Commodities	-	-	-	-	-
Capital Improvements	250,000	250,000	250,000	250,000	0.0%
Capital Equipment	-	-	-	-	-
Interfund Transfers	-	-	-	-	-
Total Expenditures	273,793	250,000	250,000	250,000	0.0%
Revenue					
Taxes	-	-	-	-	-
Intergovernmental	-	-	-	-	-
Charges For Service	-	-	-	-	-
Other Revenue	-	-	-	-	-
Total Revenue	-	-	-	-	-
Full-Time Equivalents (FTEs)	-	-	-	-	-

