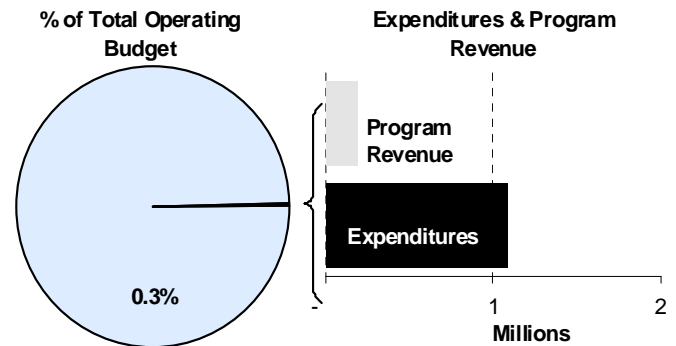
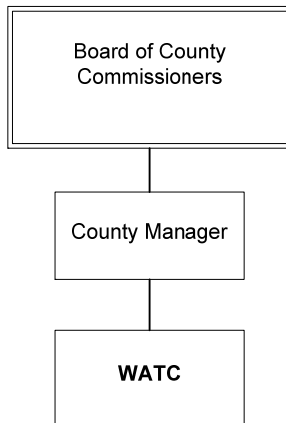




Marvin Duncan
 Government Relations Director
 525 N. Main, Ste. 315
 Wichita, Kansas 67203
 316-660-9339
mduncan@sedgwick.gov

Mission:

- To provide students with a state-of-the-art technical education, whether they are here for the beginning stage of their education or returning to gain further training for new skills.



Description of Major Services

Wichita Area Technical College (WATC) is dedicated to serving business and industry in south-central Kansas through the delivery of a comprehensive portfolio of programs and services. WATC faculty and staff strive to develop a highly trained workforce that gives Kansas employers a competitive advantage. WATC is committed to providing the training that is needed – where it is needed, when it is needed.

In August 2004, after the Legislature passed a bill that separated WATC from Unified School District 259, the Board of County Commissioners passed a resolution creating the Sedgwick County Technical Education & Training Authority (SCTETA). The purpose of the Authority is to be a broker/overseer of technical training that fits the needs of businesses and at the same time serve as the Board of Directors for Wichita Area Technical College.

The National Center for Aviation Training (NCAT) is a world class training and research center designed to meet changing aviation/manufacturing business and

workforce needs. NCAT is unique because it brings research and technical training under one roof blending them to meet industry needs.

NCAT has two partners: WATC, under the direction of SCTETA, coordinates the training programs and instruction at NCAT while Wichita State University’s (WSU) National Institute for Aviation Research (NIAR) provides research and development opportunities and instruction.

WATC is the designated operator for the NCAT campus. Sedgwick County reimburses WATC, as the operator, for utilities, repairs, cleaning, security, and maintenance costs associated with WSU/NIAR space at NCAT.

Budget Adjustments

Changes to Technical Education’s 2013 budget include a 5.0 percent reduction of the County’s contribution to WATC, totaling \$47,000. The budget also includes an increase in the contractual utility reimbursement amount for WSU’s NIAR space at NCAT.

Significant Adjustments From Previous Budget Year

- Increase in contractual utility reimbursement for WSU National Inst. for Aviation Research space at NCAT
- Reduce contribution to Wichita Area Technical College by 5 percent

Expenditures	Revenue	FTEs
32,912		
(47,000)		

Total (14,088) - -

Budget Summary by Category

Budget Summary by Fund

Expenditures	2011	2012	2012	2013	% Chg.	Expenditures	2012	2013
	Actual	Adopted	Revised				Budget	'12-'13
Personnel	-	-	-	-	-	General Fund-110	1,103,349	1,089,261
Contractual Services	1,231,676	1,103,349	1,103,349	1,089,261	-1.3%			
Debt Service	-	-	-	-	-			
Commodities	-	-	-	-	-			
Capital Improvements	-	-	-	-	-			
Capital Equipment	-	-	-	-	-			
Interfund Transfers	-	-	-	-	-			
Total Expenditures	1,231,676	1,103,349	1,103,349	1,089,261	-1.3%	Total Expenditures	1,103,349	1,089,261
Revenue								
Taxes	-	-	-	-	-			
Intergovernmental	-	-	-	-	-			
Charges For Service	-	163,349	163,349	196,261	20.1%			
Other Revenue	-	-	-	-	-			
Total Revenue	-	163,349	163,349	196,261	20.1%			
Full-Time Equivalents (FTEs)	-	-	-	-				

Budget Summary by Program

Program	Fund	Expenditures				2013	% Chg.	Full-Time Equivalents (FTEs)		
		2011	2012	2012	2013			2012	2012	2013
		Actual	Adopted	Revised	Budget	'12-'13	Adopted	Revised	Budget	
W.A.T.C	110	1,000,000	940,000	940,000	893,000	-5.0%	-	-	-	
NCAT Utility Reimbursemen	110	231,676	163,349	163,349	196,261	20.1%	-	-	-	
Total		1,231,676	1,103,349	1,103,349	1,089,261	-1.3%	-	-	-	



• W.A.T.C

Wichita Area Technical College (WATC) changes lives by training people for high-wage, high-demand jobs. WATC is dedicated to serving business and industry in south-central Kansas through the delivery of a comprehensive portfolio programs meeting their needs and ensuring students develop the right skills.

Fund(s): General Fund 110

58002-110

	2011 Actual	2012 Adopted	2012 Revised	2013 Budget	% Chg. '12-'13
Expenditures					
Personnel	-	-	-	-	
Contractual Services	1,000,000	940,000	940,000	893,000	-5.0%
Debt Service	-	-	-	-	
Commodities	-	-	-	-	
Capital Improvements	-	-	-	-	
Capital Equipment	-	-	-	-	
Interfund Transfers	-	-	-	-	
Total Expenditures	1,000,000	940,000	940,000	893,000	-5.0%
Revenue					
Taxes	-	-	-	-	
Intergovernmental	-	-	-	-	
Charges For Service	-	-	-	-	
Other Revenue	-	-	-	-	
Total Revenue	-	-	-	-	
Full-Time Equivalents (FTEs)	-	-	-	-	

• NCAT Utility Reimbursement

National Center for Aviation Training (NCAT) is a world-class training/research center designed to meet changing aviation/ manufacturing business and workforce needs. Students receive training in real world environment for aviation manufacturing and aircraft and power plant mechanics. NCAT is unique because it brings research and technical training under one roof blending them to meet industry needs. There are two partners at NCAT: Wichita Area Technical College (WATC), under the direction of Sedgwick County Technical Education & Training Authority, coordinates the training programs and instruction at NCAT while Wichita State University's (WSU) National Institute for Aviation Research (NIAR) provides research and development opportunities as well as instruction.

WATC is the designated operator for the NCAT campus. Sedgwick County reimburses WATC, as the operator, for utilities, repairs, cleaning, security, and maintenance costs associated with WSU/NIAR space at NCAT. This amount increases by \$32,912 for 2013.

Fund(s): General Fund 110

58003-110

	2011 Actual	2012 Adopted	2012 Revised	2013 Budget	% Chg. '12-'13
Expenditures					
Personnel	-	-	-	-	
Contractual Services	231,676	163,349	163,349	196,261	20.1%
Debt Service	-	-	-	-	
Commodities	-	-	-	-	
Capital Improvements	-	-	-	-	
Capital Equipment	-	-	-	-	
Interfund Transfers	-	-	-	-	
Total Expenditures	231,676	163,349	163,349	196,261	20.1%
Revenue					
Taxes	-	-	-	-	
Intergovernmental	-	-	-	-	
Charges For Service	-	163,349	163,349	196,261	20.1%
Other Revenue	-	-	-	-	
Total Revenue	-	163,349	163,349	196,261	20.1%
Full-Time Equivalents (FTEs)	-	-	-	-	