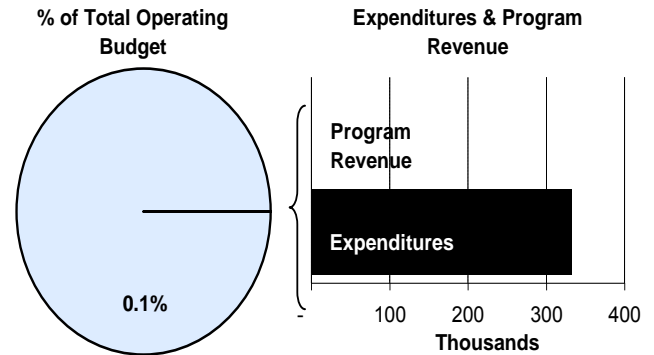
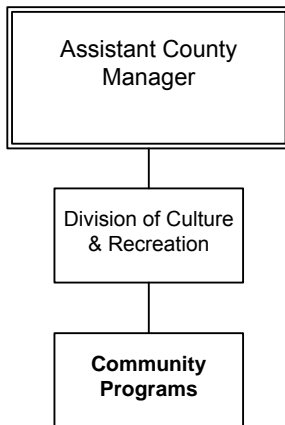




Ron Holt
 Assistant County Manager
 525 N. Main, Suite 343
 Wichita, Kansas 67203
 316-660-9393
rholt@sedgwick.gov

Mission:

- To enhance the quality of life in Sedgwick County by supporting cultural, entertainment, recreational, and related educational opportunities for citizens and visitors.



Description of Major Services

The Community Programs fund center provides funding to local agencies for cultural and recreational activities that provide significant contributions to the community and the quality of life of its citizens. Agencies that have received funding in the past include the Kansas Junior Livestock Show, the Sedgwick County Fair Association, the Kansas African American Museum, the Arts Council, the Wichita/Sedgwick County Historical Museum, and the Greater Wichita Area Sports Commission.

Programs and Functions

The 80th annual Kansas Junior Livestock Show will be held on September 21-24, 2012 at the Kansas Pavilions. The purpose of the Kansas Junior Livestock Association (KJLA) is to promote the welfare of the livestock industry, to further the education and cooperation of young people interested in livestock, and to aid in the attainment of mutual goals set by KJLA members

interested in all phases of this business and all possible career opportunities.

The Fairgrounds in Cheney, Kansas are home to the Sedgwick County Fair, which is held on an annual basis for four days in July.

Budgeted Allocations			
	2011 Actual	2012 Revised	2013 Budget
KS Junior Livestock	\$23,304	\$21,771	\$21,771
Sedgwick County Fair	\$31,500	\$29,427	\$29,427
The Kansas African American Museum	\$185,000	\$172,827	\$172,827
The Arts Council	\$15,000	\$14,013	\$14,013
Wichita/Sedgwick Co. Historical Museum	\$96,573	\$90,218	\$90,218
Greater Wichita Area Sports Commission	\$5,000	\$5,000	\$5,000
Wichita Festivals - Riverfest	\$25,000	\$10,000	-
Wichita Open	\$7,500	-	-
Total	\$388,877	\$343,256	\$333,256



The Kansas African American Museum (TKAAM) is a regional museum of history and culture dedicated to telling the stories of the African American experience in Kansas in order to educate about the past and inspire hope for the future. TKAAM brought the community inspiring traveling exhibits over the past year, including the Tuskegee Airmen exhibit. The museum also created a traveling exhibit of their own entitled, "Hattie McDaniel: Defined by Grace." This exhibit is on display in Kansas City, Missouri at the Bruce R. Watkins Cultural Heritage Center and will soon be traveling to other cities in the state of Kansas.

The mission of the Arts Council is to advance and promote arts and culture in the Wichita community through advocacy, leadership, education and collaboration. The organization's list of events features dance, film, gallery exhibitions, museums, music, senior programs, theater, university events, and youth programs.

The Wichita/Sedgwick County Historical Museum's mission is to educate the community and its visitors about local history by collecting, preserving, and interpreting materials reflecting the heritage of Wichita and Sedgwick County. The Museum is located in downtown Wichita at 204 S. Main.

The Greater Wichita Area Sports Commission is a private not-for-profit organization formed in August 1997. The Sports Commission was developed to improve the quality of life and the economy in Wichita through sports, as well as provide support to existing events and organizations in our community.

Current and Emerging Issues

The Culture and Recreation Community Programs program area continues to receive and review funding requests in the context of the fiscal constraints. Funding for agencies will continue to be considered on an annual basis.

Budget Adjustments

Changes to the Culture and Recreation Community Programs 2013 budget reflect an elimination of \$10,000 in contractual support for Wichita Festivals - Riverfest.

Alignment with County Values

- **Equal Opportunity -**
A wide variety of cultural and recreational venues and events throughout Sedgwick County are supported by Community Programs
- **Commitment -**
Community Programs is committed to supporting activities that increase the quality of life for Sedgwick County residents

Goals & Initiatives

- **To enhance the quality of life in Sedgwick County by supporting cultural, entertainment, recreational, and related educational opportunities for citizens and visitors**

Significant Adjustments From Previous Budget Year

- Eliminate contractual support for Wichita Festivals - Riverfest

Expenditures	Revenue	FTEs
(10,000)		

Total	(10,000)	-	-
--------------	----------	---	---

Budget Summary by Category

Budget Summary by Fund

	2011 Actual	2012 Adopted	2012 Revised	2013 Budget	% Chg. '12-'13
Expenditures					
Personnel	-	-	-	-	
Contractual Services	388,877	333,256	343,256	333,256	-2.9%
Debt Service	-	-	-	-	
Commodities	-	-	-	-	
Capital Improvements	-	-	-	-	
Capital Equipment	-	-	-	-	
Interfund Transfers	-	-	-	-	
Total Expenditures	388,877	333,256	343,256	333,256	-2.9%
Revenue					
Taxes	-	-	-	-	
Intergovernmental	-	-	-	-	
Charges For Service	-	-	-	-	
Other Revenue	-	-	-	-	
Total Revenue	-	-	-	-	
Full-Time Equivalents (FTEs)	-	-	-	-	

Expenditures	2012 Revised	2013 Budget
General Fund-110	343,256	333,256
Total Expenditures	343,256	333,256

Budget Summary by Program

Program	Fund	Expenditures				2013 Budget	% Chg. '12-'13
		2011 Actual	2012 Adopted	2012 Revised	2013 Budget		
Community Pgms - Mus	110	388,877	333,256	343,256	333,256	-2.9%	
Total		388,877	333,256	343,256	333,256	-2.9%	

Full-Time Equivalents (FTEs)		
2012 Adopted	2012 Revised	2013 Budget
-	-	-
Total	-	-

