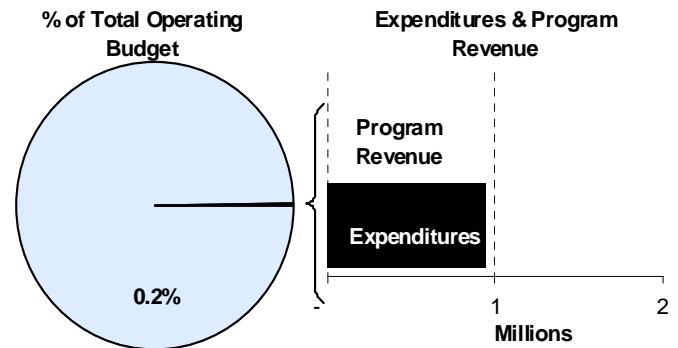
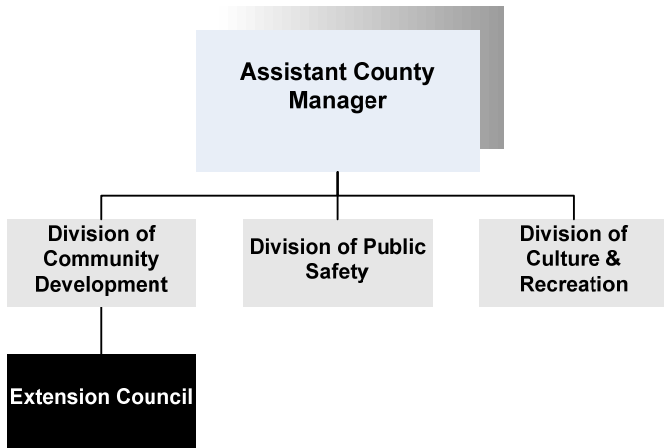




Bev Dunning
 Extension Center Director
 7001 W. 21st
 Wichita, KS 67205
 316-660-0100
bdunning@sedgwick.gov

Mission:

- ❑ **Dedicated to a safe, sustainable, competitive food and fiber system and to strong, healthy communities, families, and youth through integrated research, analysis, and education.**



Program Information

The K-State Research and Extension Center in Sedgwick County provides educational seminars and information on a variety of topics, including:

- Family and Consumer Sciences like food safety, nutrition, clothing, housing, environmental issues, personal budgeting, parenting, assistance to the elderly regarding health care and insurance-related issues
- 4-H and educational opportunities for the positive development of youth
- Agriculture and Horticulture Education information to landowners regarding farming and gardening, soil testing, and information regarding composting and environmental safety

The Extension Council is funded by Sedgwick County, the Federal government, and the State of Kansas. Both Federal and State funds are allocated through Kansas State University. Sedgwick County allocates quarterly

payments to the Extension Council for its annual contribution.

The Sedgwick County Extension Council is composed of 24 members. Six of the members in Sedgwick County are elected at-large and six members are elected in each of the four following program areas, 4-H Youth Development, Community Development, Agriculture and Home Economics. These six members in each of the four program areas are called Program Development Committees. Council terms are two years with a two-term limit. All citizens of voting age are eligible to vote in the at-large election. This election is held between September 1 and no later than ten days before the annual meeting of the council.

At the annual meeting, the council elects from its own members, nine people to serve on the executive board, consisting of a chair, vice chair, secretary, treasurer and five other members. One member from each of the four program development committees must serve on the executive board, plus five others, randomly elected from the council.

Department Sustainability Initiatives

The Extension Program Development Committee reviews all Extension educational programs to evaluate the economic impact on families and producers. The Extension also partners with small local communities enrolled in the PRIDE program through Kansas State University (KSU). Through the PRIDE program, the Extension Center assisted the City of Mount Hope in acquiring the “Get It, Do It” Grant through Kansas State University, which brought community members together for walking teams.

Agricultural agents and water specialists work with Sedgwick County producers to maintain environmental protection of waterways from agricultural run off.

The EARTH educational program, supported by the Kansas Department of Health and Environment (KDHE) through KSU, is designed to teach middle school youth to protect the environment. This program began in Sedgwick County and has now been implemented in 14 other Kansas counties through the training efforts of Sedgwick County professionals.

g2g Outside is an organization that encourages kids and families to play outside. This free summer program includes a series of events at different parks and facilities. More information is available online at www.g2goutside.org.

Sedgwick County Extension, through a Hispanic Family and Consumer Science Agent, is now providing educational information to the local Hispanic community regarding parenting and financial management. As part of this effort, the agent produces two Hispanic radio programs.

Department Accomplishments

The Extension Senior Health Insurance Program (SHICK) is administered through the Family and Consumer Science Department. This program is supported by grant funds and provided training for 43 volunteers who teach seniors about Medicare and other insurance needs in 2010. Throughout 2010, the Department served 4,864 seniors over the course of 1,512 volunteer hours. During the Medicare open enrollment period in the fall of 2010, 1,205 seniors were advised with an average savings per person of \$868 for a total estimated savings of \$1,045,940 for Sedgwick County seniors.

The freshman class of Master Gardeners for 2010 included 32 newly trained gardeners. In 2010, 257 active Master Gardeners gave 23,316 volunteer hours of service to the community. The “Plant a Row for the Hungry” program through the Extension Center contributed 77,987 pounds of produce to the Kansas Food Bank in 2010.

Budget Adjustments

The 2012 Extension Council budget reflects a 14.7 percent reduction in County support from the 2011 revised figures.

Alignment with County Values

- **Open Communication -**
To bring unbiased, research-based “Knowledge for Life” from the university to citizens

Goals & Initiatives

- **Assist families in achieving a balance in their personal and community roles**
- **Improve sustainability and viability of Sedgwick County agriculture and livestock production**
- **Assist youth in developing life skills to become self-directing adults**
- **Protect natural resources and the environment through targeted educational programs**

Significant Adjustments From Previous Budget Year

- Reduction in contractals including annual County support

Expenditures	Revenue	FTEs
(161,000)		

Total	(161,000)	-	-
--------------	-----------	---	---

Budget Summary by Category

	2010 Actual	2011 Adopted	2011 Revised	2012 Budget	% Chg. '11-'12
Expenditures					
Personnel	-	-	-	-	-
Contractual Services	1,087,473	1,098,348	1,098,348	937,348	-14.7%
Debt Service	-	-	-	-	-
Commodities	-	-	-	-	-
Capital Improvements	-	-	-	-	-
Capital Equipment	-	-	-	-	-
Interfund Transfers	-	-	-	-	-
Total Expenditures	1,087,473	1,098,348	1,098,348	937,348	-14.7%
Revenue					
Taxes	-	-	-	-	-
Intergovernmental	-	-	-	-	-
Charges For Service	-	-	-	-	-
Other Revenue	-	-	-	-	-
Total Revenue	-	-	-	-	-
Full-Time Equivalents (FTEs)	-	-	-	-	-

Budget Summary by Fund

Expenditures	2011 Revised	2012 Budget
General Fund-110	1,098,348	937,348
Total Expenditures	1,098,348	937,348

Budget Summary by Program

Program	Fund	Expenditures				2012 Budget	% Chg. '11-'12	Full-Time Equivalents (FTEs)		
		2010 Actual	2011 Adopted	2011 Revised	2011 Adopted			2011 Revised	2012 Budget	
Extension Council	110	1,087,473	1,098,348	1,098,348	937,348	-14.7%	-	-	-	
Total		1,087,473	1,098,348	1,098,348	937,348	-14.7%	-	-	-	

