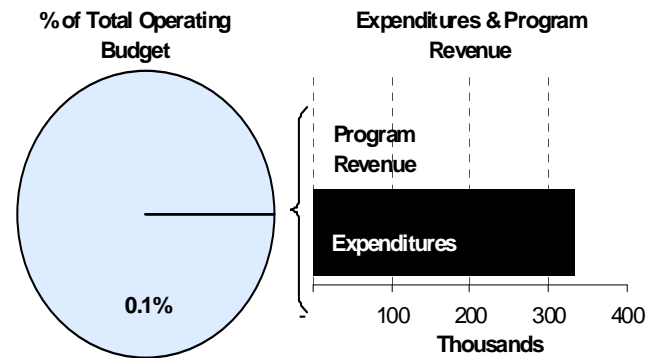
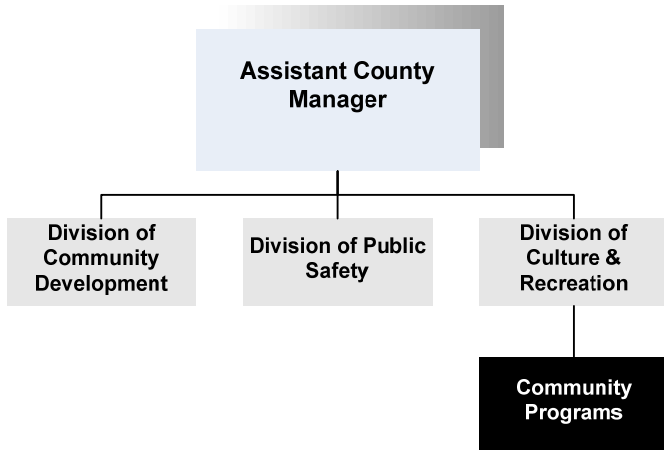




**Ron Holt**  
 Assistant County Manager  
 525 N. Main, Suite 343  
 Wichita, Kansas 67203  
 316-660-9393  
[rholt@sedgwick.gov](mailto:rholt@sedgwick.gov)

**Mission:**

- To enhance the quality of life in Sedgwick County by supporting cultural, entertainment, recreational, and related educational opportunities for citizens and visitors.



**Program Information**

The Community Programs fund center provides funding to local agencies for cultural and recreational activities that provide significant contributions to the community and the quality of life of its citizens. Agencies that have received funding in the past include the Kansas Junior Livestock Show, the Sedgwick County Fair Association, the Kansas African American Museum, the Arts Council, the Wichita/Sedgwick County Historical Museum, and the Greater Wichita Area Sports Commission.

The 2011 Kansas Junior Livestock Show will be held on September 23-26 at the Kansas Pavilions. The purpose of the Kansas Junior Livestock Association (KJLA) is to promote the welfare of the livestock industry, to further the education and cooperation of young people interested in livestock, and to aid in the attainment of mutual goals set by KJLA members interested in all phases of this business and all possible career opportunities.

Budgeted Allocations			
	2010 Actual	2011 Revised	2012 Budget
KS Junior Livestock	\$23,304	\$23,304	\$21,771
Sedgwick County Fair	\$31,500	\$31,500	\$29,427
The Kansas African American Museum	\$185,000	\$185,000	\$172,827
The Arts Council	\$15,000	\$7,500*	\$14,013
Wichita Art Museum Exhibit	\$15,000	-	-
Wichita/Sedgwick County Historical Museum	\$96,573	\$96,573	\$90,218
Greater Wichita Area Sports Commission	\$5,000	\$5,000	\$5,000
Wichita Festivals Riverfest	*	\$25,000	-
City of Wichita Flight Festival	\$20,000	-	-
Wichita Open	\$7,500	\$7,500	-
Welcome Wichita Channel	\$10,000	-	-
<b>Total</b>	<b>\$408,877</b>	<b>\$381,377</b>	<b>\$333,256</b>

\*\$25,000 to support the 2010 River Festival was paid in 2009  
 \*\* An additional \$7,500 was budgeted to support the Arts Council in 2011, bringing total 2011 Arts Council support to \$15,000

Fairgrounds in Cheney, Kansas are home to the Sedgwick County Fair, which is held on an annual basis for four days in July.

The mission of the Arts Council is to advance and promote arts and culture in the Wichita community through advocacy, leadership, education and collaboration. The organization’s list of events features dance, film, gallery exhibitions, museums, music, senior programs, theater, university events, and youth programs.

Wichita Festivals, Inc. exists for the purpose of “Community Celebration.” Riverfest has grown from a one-day event with an attendance of several thousand, to a nine-day event attracting more than 350,000 participants from Wichita and across the State of Kansas. The Wichita Flight Festival held each August includes air-shows, stunts, aviation displays, exhibits, educational speakers and a world of kid’s activities. No budget authority has been included for either event in 2012.

**Department Sustainability Initiatives**

The Kansas African American Museum is a regional arts and cultural museum dedicated to the education, identification, acquisition, research, collection, exhibition, presentation and preservation of visual art forms, artists, programs and documents reflective of African American life and culture. Using the tool of the arts, its goal is to bridge the gap of understanding among the cultures. In June 2011, the Kansas African American Museum will present two traveling exhibitions: Tuskegee Airmen: The Segregated Skies of World War II and the Ron Spriggs Exhibit of Tuskegee Airmen.

The Greater Wichita Area Sports Commission is a private not-for-profit organization formed in August 1997. The Sports Commission was developed to improve the quality of life and the economy in Wichita

through sports as well as provide support to existing events and organizations in our community.

**Department Accomplishments**

The Wichita/Sedgwick County Historical Museum’s mission is to educate the community and its visitors about local history by collecting, preserving, and interpreting materials reflecting the heritage of Wichita and Sedgwick County. The Museum is located in downtown Wichita at 204 S. Main.

**Budget Adjustments**

Changes to Community Program’s 2012 budget reflect a 6.6% cut for most supported programs, a reduction of \$48,121 from 2011 funding levels. A program by program list of funding levels for 2012 is available on the previous page.

**Alignment with County Values**

- **Equal Opportunity -**  
A wide variety of cultural and recreational venues and events throughout Sedgwick County are supported by Community Programs
- **Commitment -**  
Community Programs is committed to supporting activities that increase the quality of life for Sedgwick County residents

---

**Goals & Initiatives**

- **To enhance the quality of life in Sedgwick County by supporting cultural, entertainment, recreational, and related educational opportunities for citizens and visitors**

**Significant Adjustments From Previous Budget Year**

- Reduction in contractals including support for various community programs

Expenditures	Revenue	FTEs
(48,121)		

<b>Total</b>	(48,121)	-	-
--------------	----------	---	---

Budget Summary by Category						Budget Summary by Fund		
	2010 Actual	2011 Adopted	2011 Revised	2012 Budget	% Chg. '11-'12	Expenditures	2011 Revised	2012 Budget
<b>Expenditures</b>								
Personnel	-	-	-	-	-	General Fund-110	381,377	333,256
Contractual Services	408,877	356,377	381,377	333,256	-12.6%			
Debt Service	-	-	-	-	-			
Commodities	-	-	-	-	-			
Capital Improvements	-	-	-	-	-			
Capital Equipment	-	-	-	-	-			
Interfund Transfers	-	-	-	-	-			
<b>Total Expenditures</b>	<b>408,877</b>	<b>356,377</b>	<b>381,377</b>	<b>333,256</b>	<b>-12.6%</b>	<b>Total Expenditures</b>	<b>381,377</b>	<b>333,256</b>
<b>Revenue</b>								
Taxes	-	-	-	-	-			
Intergovernmental	-	-	-	-	-			
Charges For Service	-	-	-	-	-			
Other Revenue	-	-	-	-	-			
<b>Total Revenue</b>	<b>-</b>	<b>-</b>	<b>-</b>	<b>-</b>	<b>-</b>			
<b>Full-Time Equivalents (FTEs)</b>	<b>-</b>	<b>-</b>	<b>-</b>	<b>-</b>	<b>-</b>			

**Budget Summary by Program**

Program	Fund	Expenditures				2012 Budget	% Chg. '11-'12	Full-Time Equivalents (FTEs)		
		2010 Actual	2011 Adopted	2011 Revised	2011 Adopted			2011 Revised	2012 Budget	
Community Pgms - Mus	110	408,877	356,377	381,377	333,256	-12.6%	-	-	-	
<b>Total</b>		<b>408,877</b>	<b>356,377</b>	<b>381,377</b>	<b>333,256</b>	<b>-12.6%</b>	<b>-</b>	<b>-</b>	<b>-</b>	

